



# Full wwPDB X-ray Structure Validation Report ⓘ

Oct 19, 2023 – 05:45 AM EDT

PDB ID : 2OBF  
Title : Structure of K57A hPNMT with inhibitor 3-Hydroxymethyl-7-(N-4-chlorophenylaminosulfonyl)-THIQ and AdoHcy (SAH)  
Authors : Drinkwater, N.; Martin, J.L.  
Deposited on : 2006-12-19  
Resolution : 2.30 Å(reported)

This is a Full wwPDB X-ray Structure Validation Report for a publicly released PDB entry.

We welcome your comments at [validation@mail.wwpdb.org](mailto:validation@mail.wwpdb.org)

A user guide is available at

<https://www.wwpdb.org/validation/2017/XrayValidationReportHelp>

with specific help available everywhere you see the ⓘ symbol.

The types of validation reports are described at

<http://www.wwpdb.org/validation/2017/FAQs#types>.

---

The following versions of software and data (see [references ⓘ](#)) were used in the production of this report:

MolProbity : 4.02b-467  
Mogul : 1.8.5 (274361), CSD as541be (2020)  
Xtriage (Phenix) : 1.13  
EDS : 2.36  
buster-report : 1.1.7 (2018)  
Percentile statistics : 20191225.v01 (using entries in the PDB archive December 25th 2019)  
Refmac : 5.8.0158  
CCP4 : 7.0.044 (Gargrove)  
Ideal geometry (proteins) : Engh & Huber (2001)  
Ideal geometry (DNA, RNA) : Parkinson et al. (1996)  
Validation Pipeline (wwPDB-VP) : 2.36

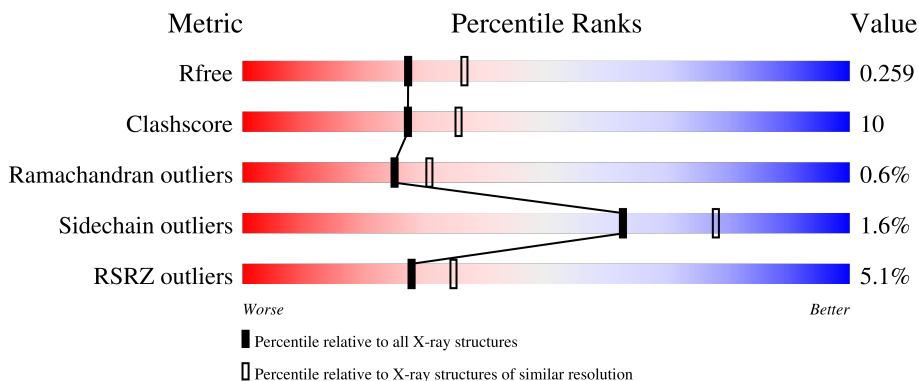
# 1 Overall quality at a glance

The following experimental techniques were used to determine the structure:

*X-RAY DIFFRACTION*

The reported resolution of this entry is 2.30 Å.

Percentile scores (ranging between 0-100) for global validation metrics of the entry are shown in the following graphic. The table shows the number of entries on which the scores are based.



Metric	Whole archive (#Entries)	Similar resolution (#Entries, resolution range(Å))
$R_{free}$	130704	5042 (2.30-2.30)
Clashscore	141614	5643 (2.30-2.30)
Ramachandran outliers	138981	5575 (2.30-2.30)
Sidechain outliers	138945	5575 (2.30-2.30)
RSRZ outliers	127900	4938 (2.30-2.30)

The table below summarises the geometric issues observed across the polymeric chains and their fit to the electron density. The red, orange, yellow and green segments of the lower bar indicate the fraction of residues that contain outliers for  $\geq 3$ , 2, 1 and 0 types of geometric quality criteria respectively. A grey segment represents the fraction of residues that are not modelled. The numeric value for each fraction is indicated below the corresponding segment, with a dot representing fractions  $\leq 5\%$ . The upper red bar (where present) indicates the fraction of residues that have poor fit to the electron density. The numeric value is given above the bar.

Mol	Chain	Length	Quality of chain
1	A	289	 4% 70% 18% • 11%
1	B	289	 5% 71% 21% • 7%

## 2 Entry composition [i](#)

There are 4 unique types of molecules in this entry. The entry contains 4490 atoms, of which 0 are hydrogens and 0 are deuteriums.

In the tables below, the ZeroOcc column contains the number of atoms modelled with zero occupancy, the AltConf column contains the number of residues with at least one atom in alternate conformation and the Trace column contains the number of residues modelled with at most 2 atoms.

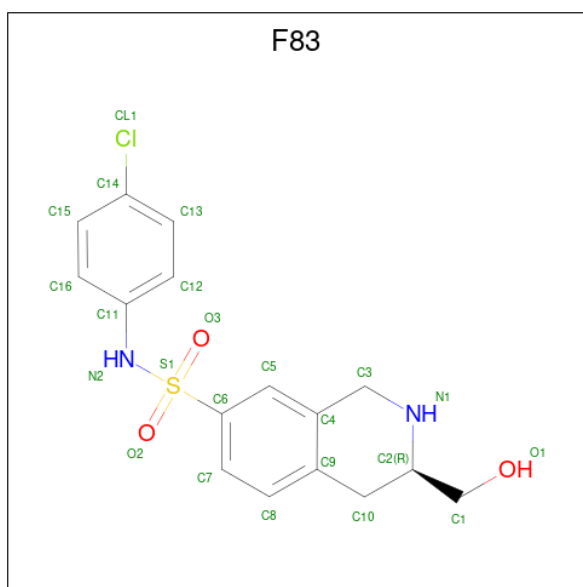
- Molecule 1 is a protein called Phenylethanolamine N-methyltransferase.

Mol	Chain	Residues	Atoms					ZeroOcc	AltConf	Trace
			Total	C	N	O	S			
1	A	257	Total	C	N	O	S	0	1	0
			2016	1279	357	371	9			
1	B	269	Total	C	N	O	S	0	2	0
			2102	1332	374	387	9			

There are 16 discrepancies between the modelled and reference sequences:

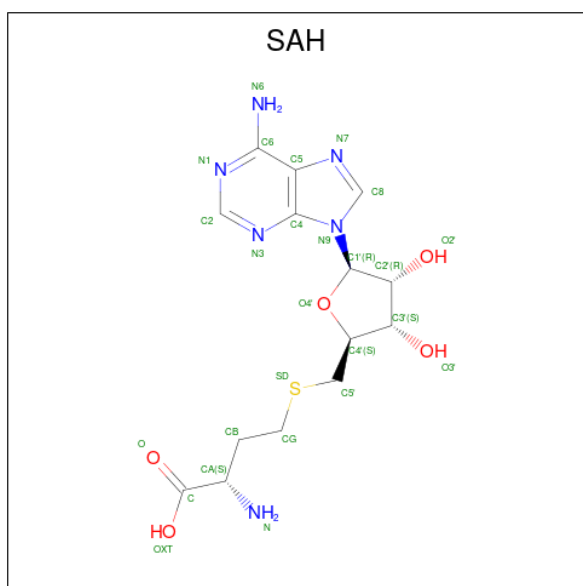
Chain	Residue	Modelled	Actual	Comment	Reference
A	57	ALA	LYS	engineered mutation	UNP P11086
A	283	GLU	-	expression tag	UNP P11086
A	284	HIS	-	expression tag	UNP P11086
A	285	HIS	-	expression tag	UNP P11086
A	286	HIS	-	expression tag	UNP P11086
A	287	HIS	-	expression tag	UNP P11086
A	288	HIS	-	expression tag	UNP P11086
A	289	HIS	-	expression tag	UNP P11086
B	557	ALA	LYS	engineered mutation	UNP P11086
B	783	GLU	-	expression tag	UNP P11086
B	784	HIS	-	expression tag	UNP P11086
B	785	HIS	-	expression tag	UNP P11086
B	786	HIS	-	expression tag	UNP P11086
B	787	HIS	-	expression tag	UNP P11086
B	788	HIS	-	expression tag	UNP P11086
B	789	HIS	-	expression tag	UNP P11086

- Molecule 2 is (3R)-N-(4-CHLOROPHENYL)-3-(HYDROXYMETHYL)-1,2,3,4-TE TRAHYDROISOQUINOLINE-7-SULFONAMIDE (three-letter code: F83) (formula: C<sub>16</sub>H<sub>17</sub>ClN<sub>2</sub>O<sub>3</sub>S).



Mol	Chain	Residues	Atoms					ZeroOcc	AltConf	
			Total	C	Cl	N	O			S
2	A	1	Total	C	Cl	N	O	S	0	0
			23	16	1	2	3	1		
2	B	1	Total	C	Cl	N	O	S	0	0
			23	16	1	2	3	1		

- Molecule 3 is S-ADENOSYL-L-HOMOCYSTEINE (three-letter code: SAH) (formula:  $C_{14}H_{20}N_6O_5S$ ).



Mol	Chain	Residues	Atoms					ZeroOcc	AltConf
			Total	C	N	O	S		
3	A	1	Total	C	N	O	S	0	0
			26	14	6	5	1		

*Continued on next page...*

*Continued from previous page...*

Mol	Chain	Residues	Atoms					ZeroOcc	AltConf
			Total	C	N	O	S		
3	B	1	26	14	6	5	1	0	0

- Molecule 4 is water.

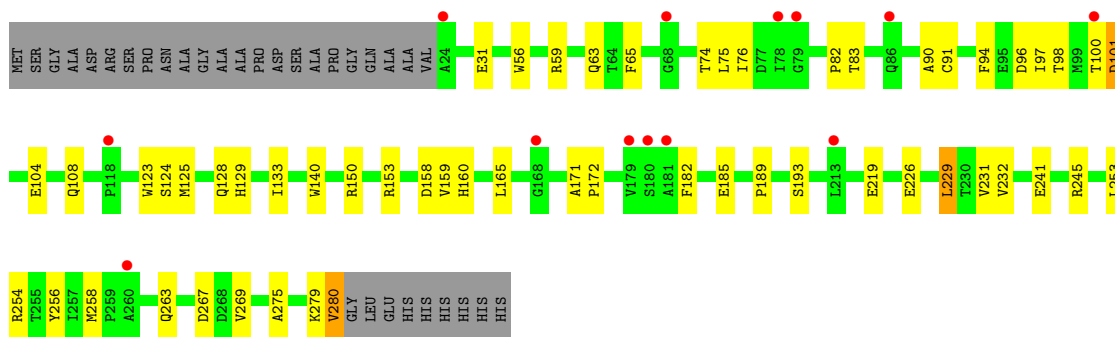
Mol	Chain	Residues	Atoms		ZeroOcc	AltConf
4	A	131	Total	O	0	0
			131	131		
4	B	143	Total	O	0	0
			143	143		

### 3 Residue-property plots [i](#)

These plots are drawn for all protein, RNA, DNA and oligosaccharide chains in the entry. The first graphic for a chain summarises the proportions of the various outlier classes displayed in the second graphic. The second graphic shows the sequence view annotated by issues in geometry and electron density. Residues are color-coded according to the number of geometric quality criteria for which they contain at least one outlier: green = 0, yellow = 1, orange = 2 and red = 3 or more. A red dot above a residue indicates a poor fit to the electron density ( $RSRZ > 2$ ). Stretches of 2 or more consecutive residues without any outlier are shown as a green connector. Residues present in the sample, but not in the model, are shown in grey.

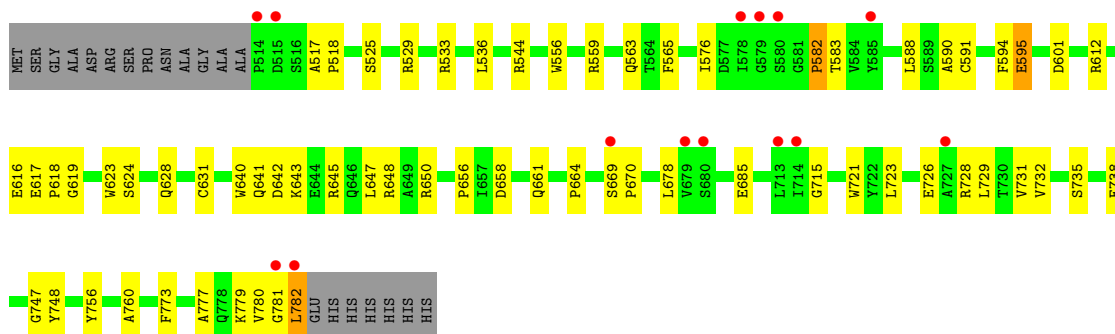
- Molecule 1: Phenylethanolamine N-methyltransferase

Chain A: 



- Molecule 1: Phenylethanolamine N-methyltransferase

Chain B: 



## 4 Data and refinement statistics

Property	Value	Source
Space group	P 43 21 2	Depositor
Cell constants a, b, c, $\alpha$ , $\beta$ , $\gamma$	94.68Å 94.68Å 188.30Å 90.00° 90.00° 90.00°	Depositor
Resolution (Å)	33.38 – 2.30 34.99 – 2.30	Depositor EDS
% Data completeness (in resolution range)	95.6 (33.38-2.30) 95.7 (34.99-2.30)	Depositor EDS
$R_{merge}$	0.05	Depositor
$R_{sym}$	(Not available)	Depositor
$\langle I/\sigma(I) \rangle$ <sup>1</sup>	1.83 (at 2.29Å)	Xtrriage
Refinement program	REFMAC, CNS 1.1	Depositor
R, $R_{free}$	0.217 , 0.267 0.213 , 0.259	Depositor DCC
$R_{free}$ test set	1935 reflections (5.00%)	wwPDB-VP
Wilson B-factor (Å <sup>2</sup> )	54.1	Xtrriage
Anisotropy	0.327	Xtrriage
Bulk solvent $k_{sol}$ (e/Å <sup>3</sup> ), $B_{sol}$ (Å <sup>2</sup> )	0.30 , 41.2	EDS
L-test for twinning <sup>2</sup>	$\langle  L  \rangle = 0.52$ , $\langle L^2 \rangle = 0.35$	Xtrriage
Estimated twinning fraction	No twinning to report.	Xtrriage
$F_o, F_c$ correlation	0.96	EDS
Total number of atoms	4490	wwPDB-VP
Average B, all atoms (Å <sup>2</sup> )	57.0	wwPDB-VP

Xtrriage's analysis on translational NCS is as follows: *The largest off-origin peak in the Patterson function is 3.69% of the height of the origin peak. No significant pseudotranslation is detected.*

<sup>1</sup>Intensities estimated from amplitudes.

<sup>2</sup>Theoretical values of  $\langle |L| \rangle$ ,  $\langle L^2 \rangle$  for acentric reflections are 0.5, 0.333 respectively for untwinned datasets, and 0.375, 0.2 for perfectly twinned datasets.

## 5 Model quality

### 5.1 Standard geometry

Bond lengths and bond angles in the following residue types are not validated in this section: F83, SAH

The Z score for a bond length (or angle) is the number of standard deviations the observed value is removed from the expected value. A bond length (or angle) with  $|Z| > 5$  is considered an outlier worth inspection. RMSZ is the root-mean-square of all Z scores of the bond lengths (or angles).

Mol	Chain	Bond lengths		Bond angles	
		RMSZ	# Z  >5	RMSZ	# Z  >5
1	A	0.35	0/2071	0.60	0/2820
1	B	0.36	0/2160	0.61	0/2942
All	All	0.36	0/4231	0.60	0/5762

There are no bond length outliers.

There are no bond angle outliers.

There are no chirality outliers.

There are no planarity outliers.

### 5.2 Too-close contacts

In the following table, the Non-H and H(model) columns list the number of non-hydrogen atoms and hydrogen atoms in the chain respectively. The H(added) column lists the number of hydrogen atoms added and optimized by MolProbity. The Clashes column lists the number of clashes within the asymmetric unit, whereas Symm-Clashes lists symmetry-related clashes.

Mol	Chain	Non-H	H(model)	H(added)	Clashes	Symm-Clashes
1	A	2016	0	1975	36	0
1	B	2102	0	2058	50	0
2	A	23	0	17	1	0
2	B	23	0	17	1	0
3	A	26	0	19	2	0
3	B	26	0	19	0	0
4	A	131	0	0	2	0
4	B	143	0	0	8	0
All	All	4490	0	4105	84	0

The all-atom clashscore is defined as the number of clashes found per 1000 atoms (including hydrogen atoms). The all-atom clashscore for this structure is 10.



All (84) close contacts within the same asymmetric unit are listed below, sorted by their clash magnitude.

Atom-1	Atom-2	Interatomic distance (Å)	Clash overlap (Å)
1:B:782:LEU:H	1:B:782:LEU:HD23	1.40	0.86
1:B:624:SER:O	1:B:628[B]:GLN:HG3	1.84	0.77
1:A:59:ARG:O	1:A:63:GLN:HG3	1.88	0.73
1:B:616:GLU:HG2	4:B:3139:HOH:O	1.92	0.69
1:B:628[B]:GLN:HG2	1:B:640:TRP:CD1	2.30	0.66
1:A:94:PHE:O	1:A:150:ARG:HD3	1.97	0.64
1:A:124:SER:O	1:A:128:GLN:HG3	1.98	0.63
1:A:128:GLN:HB3	1:B:628[A]:GLN:NE2	2.15	0.62
1:B:595:GLU:HG3	4:B:3121:HOH:O	2.00	0.61
1:B:723:LEU:HD23	1:B:728:ARG:HA	1.82	0.61
1:B:645:ARG:NH1	4:B:3135:HOH:O	2.34	0.60
1:A:98:THR:HG23	1:A:153:ARG:HG3	1.85	0.59
1:B:781:GLY:O	1:B:782:LEU:O	2.19	0.59
1:B:642:ASP:HA	1:B:645:ARG:NH1	2.19	0.58
1:B:685:GLU:O	1:B:731:VAL:HG13	2.04	0.57
1:B:782:LEU:HD23	1:B:782:LEU:N	2.17	0.57
1:B:529:ARG:HG2	1:B:726:GLU:OE1	2.06	0.56
1:A:159:VAL:HG22	3:A:3001:SAH:N1	2.21	0.56
1:B:780:VAL:O	1:B:780:VAL:HG13	2.05	0.55
1:B:782:LEU:H	1:B:782:LEU:CD2	2.05	0.55
1:B:588:LEU:O	1:B:643:LYS:HE3	2.06	0.55
1:A:128:GLN:HG2	1:A:140:TRP:CD1	2.42	0.54
1:B:631:CYS:SG	1:B:643:LYS:HD2	2.48	0.54
1:A:31:GLU:OE2	1:A:226:GLU:HG2	2.09	0.53
1:B:732:VAL:O	1:B:732:VAL:HG13	2.08	0.53
1:A:229:LEU:HD22	1:A:229:LEU:N	2.23	0.53
1:A:83:THR:HA	1:A:123:TRP:CZ2	2.44	0.53
1:B:735:SER:OG	1:B:738:GLU:HG3	2.08	0.52
1:A:232:VAL:HG13	1:A:232:VAL:O	2.10	0.52
1:A:91:CYS:O	1:A:150:ARG:HD2	2.09	0.52
1:B:729:LEU:HD12	1:B:729:LEU:H	1.75	0.52
1:B:583:THR:HA	1:B:623:TRP:CZ2	2.45	0.52
1:A:189:PRO:HD2	1:A:193:SER:CB	2.41	0.51
1:A:104:GLU:O	1:A:108:GLN:HG3	2.11	0.51
1:A:100:THR:O	1:A:101:ASP:HB2	2.09	0.50
1:A:75:LEU:HD23	1:A:76:ILE:N	2.26	0.50
1:A:74:THR:HG22	1:A:96:ASP:HB3	1.93	0.50
1:B:591:CYS:HB3	1:B:647:LEU:HD13	1.93	0.50
1:B:525:SER:O	1:B:529:ARG:NH2	2.45	0.49
1:B:658:ASP:O	1:B:664:PRO:HA	2.12	0.49

*Continued on next page...*

*Continued from previous page...*

Atom-1	Atom-2	Interatomic distance (Å)	Clash overlap (Å)
1:B:616:GLU:HG3	1:B:648:ARG:CZ	2.43	0.49
1:B:565:PHE:CZ	1:B:590:ALA:HB2	2.48	0.49
1:A:241:GLU:O	1:A:245:ARG:HG3	2.13	0.49
1:B:559:ARG:NH1	4:B:3077:HOH:O	2.46	0.48
1:A:158:ASP:OD1	1:A:160:HIS:HB2	2.14	0.47
1:B:601:ASP:O	1:B:656:PRO:HA	2.14	0.47
1:A:253:LEU:HD13	1:A:275:ALA:HB2	1.94	0.47
1:B:612:ARG:HD2	4:B:3128:HOH:O	2.14	0.47
1:B:780:VAL:O	1:B:780:VAL:CG1	2.62	0.47
1:A:56:TRP:CE2	1:A:256:TYR:HB2	2.50	0.46
1:A:65:PHE:CZ	1:A:90:ALA:HB2	2.50	0.46
1:A:91:CYS:HA	1:A:97:ILE:HD11	1.96	0.46
1:A:129:HIS:CD2	1:A:133:ILE:HD11	2.50	0.46
1:A:279:LYS:O	1:A:280:VAL:HG12	2.17	0.45
1:B:594:PHE:O	1:B:650:ARG:HD3	2.17	0.45
1:B:645:ARG:NH2	4:B:3098:HOH:O	2.47	0.44
1:A:254:ARG:CZ	4:A:3078:HOH:O	2.66	0.44
1:A:125:MET:CE	1:B:641:GLN:NE2	2.81	0.44
1:A:267:ASP:OD1	1:A:269:VAL:HG12	2.16	0.44
1:A:279:LYS:HG2	1:A:280:VAL:N	2.33	0.44
1:B:559:ARG:O	1:B:563:GLN:HG3	2.17	0.44
1:A:182:PHE:HB2	3:A:3001:SAH:HG1	2.00	0.44
1:A:219:GLU:OE2	1:A:231:VAL:HG21	2.18	0.43
1:B:760:ALA:HB3	4:B:3052:HOH:O	2.17	0.43
1:B:556:TRP:CE2	1:B:756:TYR:HB2	2.53	0.43
1:B:721:TRP:HA	1:B:729:LEU:O	2.17	0.43
1:B:533:ARG:HA	1:B:533:ARG:HD3	1.90	0.43
1:A:263:GLN:HG2	4:A:3118:HOH:O	2.18	0.43
1:B:533:ARG:NH2	1:B:619:GLY:O	2.52	0.43
1:B:747:GLY:O	1:B:780:VAL:HG12	2.19	0.43
1:B:748:TYR:HB3	1:B:777:ALA:HB1	1.99	0.43
1:A:171:ALA:HA	1:A:172:PRO:HD3	1.92	0.42
1:B:576:ILE:HB	1:B:678:LEU:CD2	2.49	0.42
1:B:645:ARG:NE	4:B:3098:HOH:O	2.44	0.42
1:B:658:ASP:HB3	1:B:661:GLN:HG2	2.00	0.42
1:B:536:LEU:HD21	1:B:582:PRO:HG2	2.02	0.42
1:B:669:SER:HA	1:B:670:PRO:HD3	1.83	0.42
1:A:56:TRP:CD2	1:A:256:TYR:HB2	2.55	0.41
1:A:219:GLU:OE2	2:A:2001:F83:O1	2.35	0.41
1:B:617:GLU:HA	1:B:618:PRO:HD3	1.91	0.41
1:B:544:ARG:HD3	2:B:2002:F83:O3	2.20	0.41

*Continued on next page...*

*Continued from previous page...*

Atom-1	Atom-2	Interatomic distance (Å)	Clash overlap (Å)
1:B:715:GLY:HA3	1:B:773:PHE:CE2	2.54	0.41
1:B:517:ALA:HB3	1:B:518:PRO:HD3	2.03	0.40
1:A:185:GLU:O	1:A:231:VAL:HG13	2.20	0.40

There are no symmetry-related clashes.

## 5.3 Torsion angles [i](#)

### 5.3.1 Protein backbone [i](#)

In the following table, the Percentiles column shows the percent Ramachandran outliers of the chain as a percentile score with respect to all X-ray entries followed by that with respect to entries of similar resolution.

The Analysed column shows the number of residues for which the backbone conformation was analysed, and the total number of residues.

Mol	Chain	Analysed	Favoured	Allowed	Outliers	Percentiles
1	A	256/289 (89%)	245 (96%)	9 (4%)	2 (1%)	19 23
1	B	269/289 (93%)	259 (96%)	9 (3%)	1 (0%)	34 42
All	All	525/578 (91%)	504 (96%)	18 (3%)	3 (1%)	25 31

All (3) Ramachandran outliers are listed below:

Mol	Chain	Res	Type
1	B	779	LYS
1	A	101	ASP
1	A	82	PRO

### 5.3.2 Protein sidechains [i](#)

In the following table, the Percentiles column shows the percent sidechain outliers of the chain as a percentile score with respect to all X-ray entries followed by that with respect to entries of similar resolution.

The Analysed column shows the number of residues for which the sidechain conformation was analysed, and the total number of residues.

*Continued on next page...*

*Continued from previous page...*

Mol	Chain	Analysed	Rotameric	Outliers	Percentiles	
1	A	212/232 (91%)	208 (98%)	4 (2%)	57	73
1	B	220/232 (95%)	217 (99%)	3 (1%)	67	81
All	All	432/464 (93%)	425 (98%)	7 (2%)	62	78

All (7) residues with a non-rotameric sidechain are listed below:

Mol	Chain	Res	Type
1	A	165	LEU
1	A	229	LEU
1	A	258	MET
1	A	280	VAL
1	B	582	PRO
1	B	595	GLU
1	B	782	LEU

Sometimes sidechains can be flipped to improve hydrogen bonding and reduce clashes. All (3) such sidechains are listed below:

Mol	Chain	Res	Type
1	A	108	GLN
1	A	129	HIS
1	B	641	GLN

### 5.3.3 RNA [i](#)

There are no RNA molecules in this entry.

## 5.4 Non-standard residues in protein, DNA, RNA chains [i](#)

There are no non-standard protein/DNA/RNA residues in this entry.

## 5.5 Carbohydrates [i](#)

There are no monosaccharides in this entry.

## 5.6 Ligand geometry [i](#)

4 ligands are modelled in this entry.

In the following table, the Counts columns list the number of bonds (or angles) for which Mogul statistics could be retrieved, the number of bonds (or angles) that are observed in the model and the number of bonds (or angles) that are defined in the Chemical Component Dictionary. The Link column lists molecule types, if any, to which the group is linked. The Z score for a bond length (or angle) is the number of standard deviations the observed value is removed from the expected value. A bond length (or angle) with  $|Z| > 2$  is considered an outlier worth inspection. RMSZ is the root-mean-square of all Z scores of the bond lengths (or angles).

Mol	Type	Chain	Res	Link	Bond lengths			Bond angles		
					Counts	RMSZ	# Z  > 2	Counts	RMSZ	# Z  > 2
2	F83	B	2002	-	25,25,25	1.46	2 (8%)	33,36,36	1.77	2 (6%)
3	SAH	B	3002	-	24,28,28	0.87	1 (4%)	25,40,40	1.11	2 (8%)
2	F83	A	2001	-	25,25,25	1.47	2 (8%)	33,36,36	1.73	1 (3%)
3	SAH	A	3001	-	24,28,28	0.87	1 (4%)	25,40,40	1.05	2 (8%)

In the following table, the Chirals column lists the number of chiral outliers, the number of chiral centers analysed, the number of these observed in the model and the number defined in the Chemical Component Dictionary. Similar counts are reported in the Torsion and Rings columns. '-' means no outliers of that kind were identified.

Mol	Type	Chain	Res	Link	Chirals	Torsions	Rings
2	F83	B	2002	-	-	7/13/22/22	0/3/3/3
3	SAH	B	3002	-	-	1/11/31/31	0/3/3/3
2	F83	A	2001	-	-	7/13/22/22	0/3/3/3
3	SAH	A	3001	-	-	2/11/31/31	0/3/3/3

All (6) bond length outliers are listed below:

Mol	Chain	Res	Type	Atoms	Z	Observed(Å)	Ideal(Å)
2	A	2001	F83	O3-S1	6.10	1.50	1.43
2	B	2002	F83	O3-S1	6.10	1.50	1.43
2	B	2002	F83	C11-N2	2.76	1.47	1.43
2	A	2001	F83	C11-N2	2.70	1.47	1.43
3	B	3002	SAH	C2-N3	2.36	1.35	1.32
3	A	3001	SAH	C2-N3	2.33	1.35	1.32

All (7) bond angle outliers are listed below:

Mol	Chain	Res	Type	Atoms	Z	Observed(°)	Ideal(°)
2	B	2002	F83	O3-S1-O2	-8.69	108.87	119.55
2	A	2001	F83	O3-S1-O2	-8.54	109.05	119.55
3	A	3001	SAH	C4-C5-N7	3.35	112.89	109.40
3	B	3002	SAH	C4-C5-N7	3.14	112.67	109.40
3	B	3002	SAH	C5-C6-N6	2.38	123.96	120.35
3	A	3001	SAH	C5-C6-N6	2.15	123.61	120.35
2	B	2002	F83	C10-C2-C1	-2.09	109.05	112.26

There are no chirality outliers.

All (17) torsion outliers are listed below:

Mol	Chain	Res	Type	Atoms
2	A	2001	F83	C11-N2-S1-O3
2	B	2002	F83	C11-N2-S1-O3
2	B	2002	F83	C7-C6-S1-N2
2	A	2001	F83	C11-N2-S1-O2
2	B	2002	F83	C11-N2-S1-O2
2	B	2002	F83	C11-N2-S1-C6
2	A	2001	F83	C7-C6-S1-O2
2	A	2001	F83	C5-C6-S1-O2
2	B	2002	F83	C5-C6-S1-N2
2	A	2001	F83	C11-N2-S1-C6
2	B	2002	F83	C5-C6-S1-O2
2	A	2001	F83	C7-C6-S1-N2
2	A	2001	F83	C5-C6-S1-N2
2	B	2002	F83	C7-C6-S1-O2
3	A	3001	SAH	O-C-CA-CB
3	A	3001	SAH	OXT-C-CA-CB
3	B	3002	SAH	CB-CG-SD-C5'

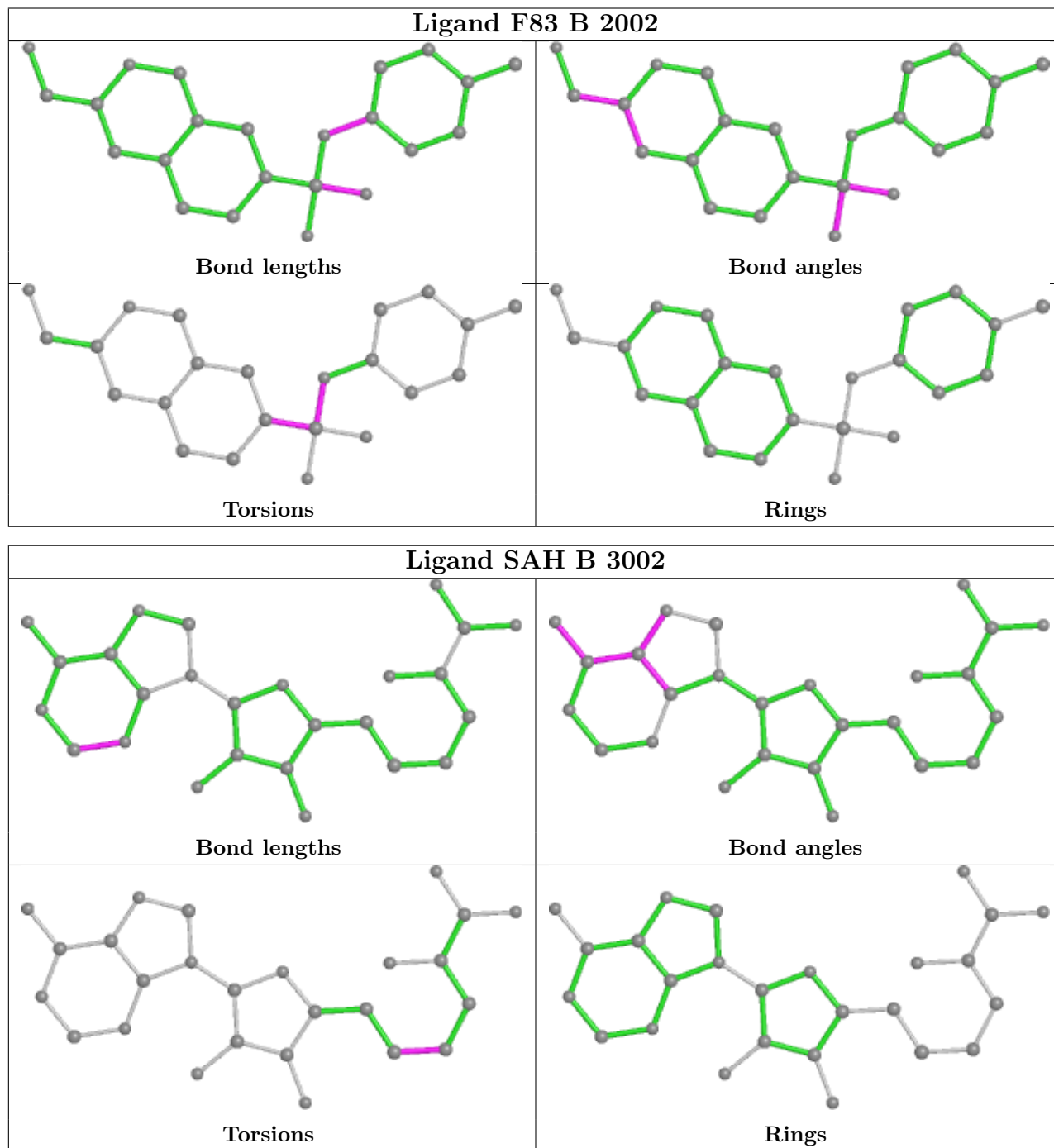
There are no ring outliers.

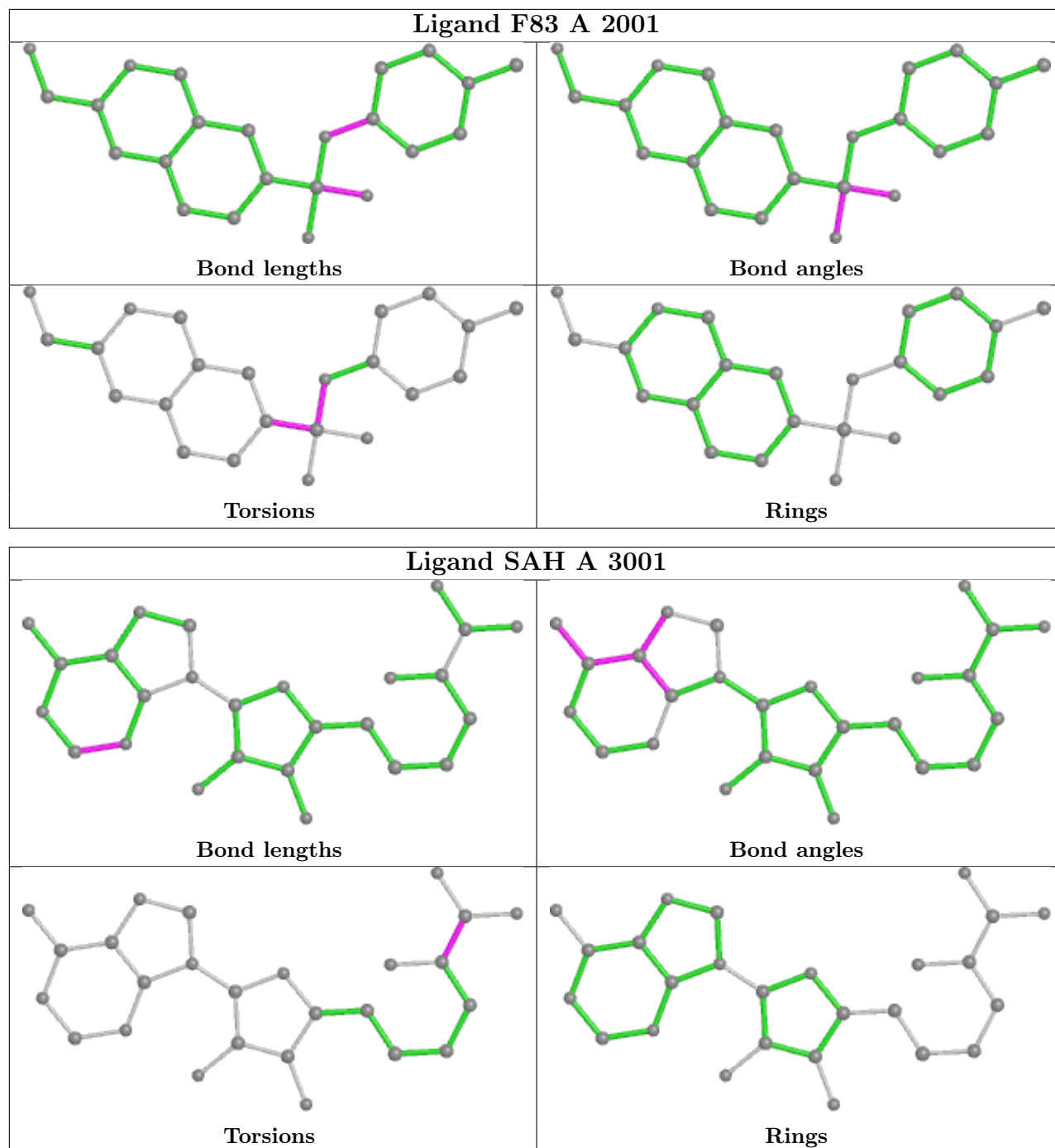
3 monomers are involved in 4 short contacts:

Mol	Chain	Res	Type	Clashes	Symm-Clashes
2	B	2002	F83	1	0
2	A	2001	F83	1	0
3	A	3001	SAH	2	0

The following is a two-dimensional graphical depiction of Mogul quality analysis of bond lengths, bond angles, torsion angles, and ring geometry for all instances of the Ligand of Interest. In addition, ligands with molecular weight > 250 and outliers as shown on the validation Tables will also be included. For torsion angles, if less than 5% of the Mogul distribution of torsion angles is

within 10 degrees of the torsion angle in question, then that torsion angle is considered an outlier. Any bond that is central to one or more torsion angles identified as an outlier by Mogul will be highlighted in the graph. For rings, the root-mean-square deviation (RMSD) between the ring in question and similar rings identified by Mogul is calculated over all ring torsion angles. If the average RMSD is greater than 60 degrees and the minimal RMSD between the ring in question and any Mogul-identified rings is also greater than 60 degrees, then that ring is considered an outlier. The outliers are highlighted in purple. The color gray indicates Mogul did not find sufficient equivalents in the CSD to analyse the geometry.





## 5.7 Other polymers [\(i\)](#)

There are no such residues in this entry.

## 5.8 Polymer linkage issues [\(i\)](#)

There are no chain breaks in this entry.



## 6 Fit of model and data

### 6.1 Protein, DNA and RNA chains

In the following table, the column labelled ‘#RSRZ > 2’ contains the number (and percentage) of RSRZ outliers, followed by percent RSRZ outliers for the chain as percentile scores relative to all X-ray entries and entries of similar resolution. The OWAB column contains the minimum, median, 95<sup>th</sup> percentile and maximum values of the occupancy-weighted average B-factor per residue. The column labelled ‘Q < 0.9’ lists the number of (and percentage) of residues with an average occupancy less than 0.9.

Mol	Chain	Analysed	<RSRZ>	#RSRZ>2	OWAB(Å <sup>2</sup> )	Q<0.9
1	A	257/289 (88%)	0.01	13 (5%) 28 35	42, 59, 81, 98	7 (2%)
1	B	269/289 (93%)	0.02	14 (5%) 27 34	40, 54, 75, 103	5 (1%)
All	All	526/578 (91%)	0.01	27 (5%) 28 35	40, 56, 80, 103	12 (2%)

All (27) RSRZ outliers are listed below:

Mol	Chain	Res	Type	RSRZ
1	B	782	LEU	6.0
1	B	727	ALA	5.3
1	B	514	PRO	5.1
1	B	781	GLY	3.9
1	A	168	GLY	3.9
1	B	515	ASP	3.6
1	A	180	SER	2.9
1	B	679	VAL	2.8
1	A	79	GLY	2.6
1	A	118	PRO	2.5
1	A	78	ILE	2.5
1	B	714	ILE	2.5
1	A	179	VAL	2.4
1	B	680	SER	2.4
1	A	68	GLY	2.3
1	A	24	ALA	2.3
1	A	86	GLN	2.3
1	B	580	SER	2.3
1	B	578	ILE	2.2
1	B	585	TYR	2.2
1	A	260	ALA	2.2
1	A	181	ALA	2.1
1	A	213	LEU	2.1
1	B	579	GLY	2.1

*Continued on next page...*

*Continued from previous page...*

Mol	Chain	Res	Type	RSRZ
1	B	713	LEU	2.1
1	B	669	SER	2.1
1	A	100	THR	2.0

## 6.2 Non-standard residues in protein, DNA, RNA chains [i](#)

There are no non-standard protein/DNA/RNA residues in this entry.

## 6.3 Carbohydrates [i](#)

There are no monosaccharides in this entry.

## 6.4 Ligands [i](#)

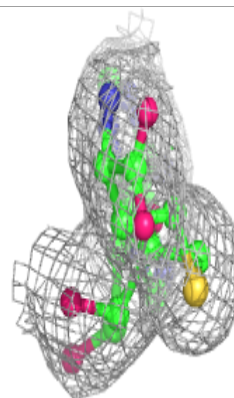
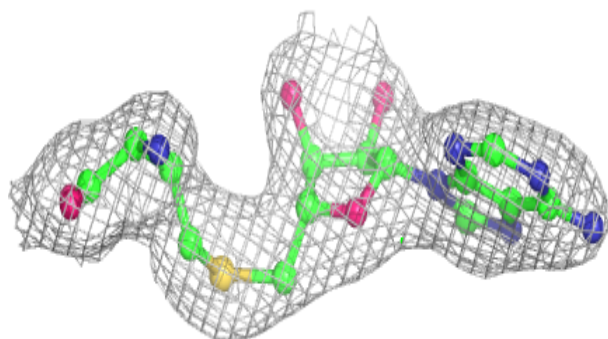
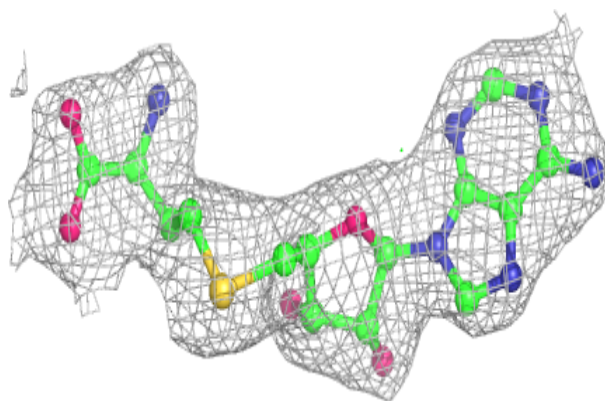
In the following table, the Atoms column lists the number of modelled atoms in the group and the number defined in the chemical component dictionary. The B-factors column lists the minimum, median, 95<sup>th</sup> percentile and maximum values of B factors of atoms in the group. The column labelled 'Q< 0.9' lists the number of atoms with occupancy less than 0.9.

Mol	Type	Chain	Res	Atoms	RSCC	RSR	B-factors( $\text{\AA}^2$ )	Q<0.9
3	SAH	A	3001	26/26	0.95	0.16	46,55,57,59	0
3	SAH	B	3002	26/26	0.95	0.19	40,47,50,51	0
2	F83	B	2002	23/23	0.97	0.13	42,45,48,49	0
2	F83	A	2001	23/23	0.98	0.14	39,43,47,51	0

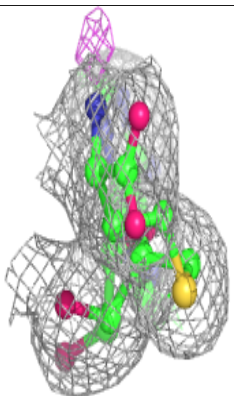
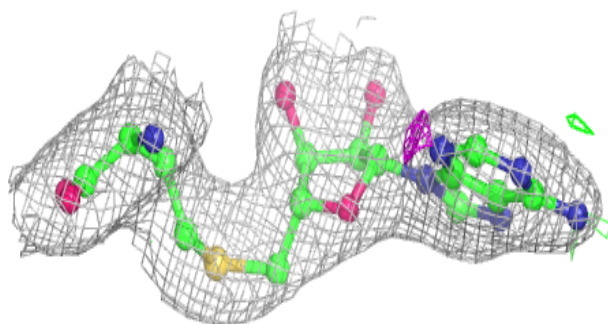
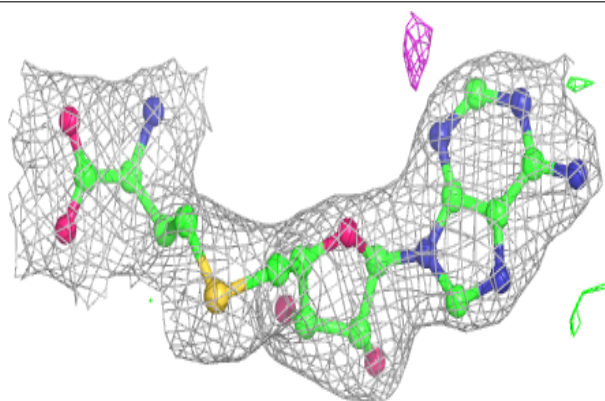
The following is a graphical depiction of the model fit to experimental electron density of all instances of the Ligand of Interest. In addition, ligands with molecular weight > 250 and outliers as shown on the geometry validation Tables will also be included. Each fit is shown from different orientation to approximate a three-dimensional view.

**Electron density around SAH A 3001:**

$2mF_o-DF_c$  (at 0.7 rmsd) in gray  
 $mF_o-DF_c$  (at 3 rmsd) in purple (negative)  
and green (positive)

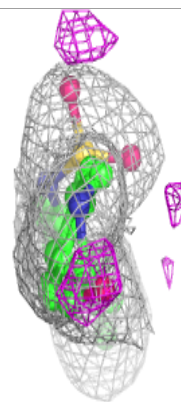
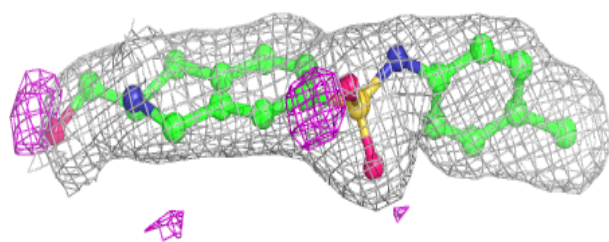
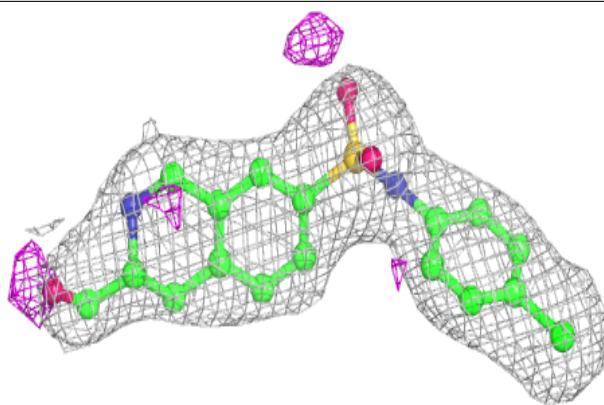
**Electron density around SAH B 3002:**

$2mF_o-DF_c$  (at 0.7 rmsd) in gray  
 $mF_o-DF_c$  (at 3 rmsd) in purple (negative)  
and green (positive)

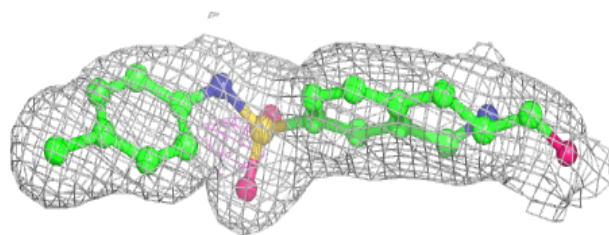
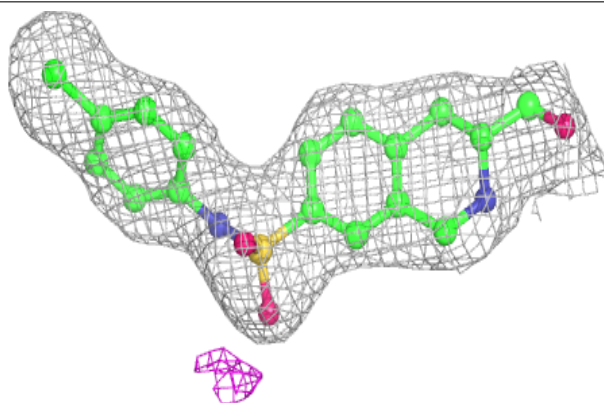


**Electron density around F83 B 2002:**

$2mF_o-DF_c$  (at 0.7 rmsd) in gray  
 $mF_o-DF_c$  (at 3 rmsd) in purple (negative)  
and green (positive)

**Electron density around F83 A 2001:**

$2mF_o-DF_c$  (at 0.7 rmsd) in gray  
 $mF_o-DF_c$  (at 3 rmsd) in purple (negative)  
and green (positive)



## 6.5 Other polymers [i](#)

There are no such residues in this entry.