



Full wwPDB X-ray Structure Validation Report ⓘ

Jul 19, 2022 – 10:13 am BST

PDB ID : 7O9Z
Title : Crystal structure of Human Menin in complex with BD-08
Authors : Groves, M.R.; Gao, K.
Deposited on : 2021-04-18
Resolution : 1.98 Å(reported)

This is a Full wwPDB X-ray Structure Validation Report for a publicly released PDB entry.

We welcome your comments at validation@mail.wwpdb.org

A user guide is available at

<https://www.wwpdb.org/validation/2017/XrayValidationReportHelp>

with specific help available everywhere you see the ⓘ symbol.

The types of validation reports are described at <http://www.wwpdb.org/validation/2017/FAQs#types>.

The following versions of software and data (see [references ⓘ](#)) were used in the production of this report:

MolProbity : 4.02b-467
Mogul : 1.8.4, CSD as541be (2020)
Xtriage (Phenix) : 1.13
EDS : 2.29
buster-report : 1.1.7 (2018)
Percentile statistics : 20191225.v01 (using entries in the PDB archive December 25th 2019)
Refmac : 5.8.0267
CCP4 : 7.1.010 (Gargrove)
Ideal geometry (proteins) : Engh & Huber (2001)
Ideal geometry (DNA, RNA) : Parkinson et al. (1996)
Validation Pipeline (wwPDB-VP) : 2.29

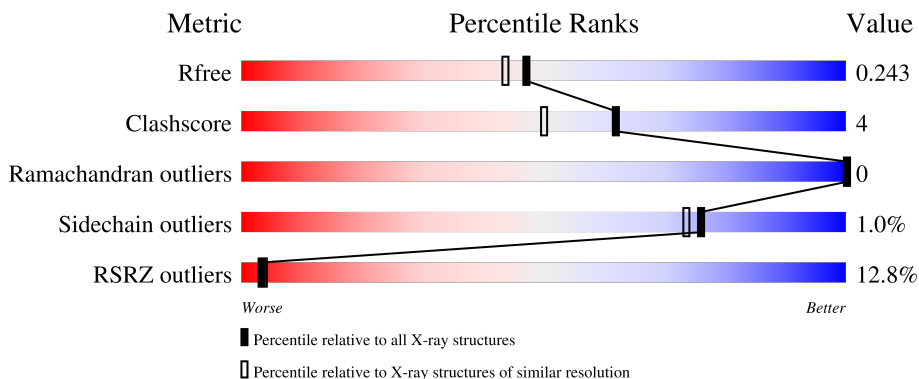
1 Overall quality at a glance

The following experimental techniques were used to determine the structure:

X-RAY DIFFRACTION

The reported resolution of this entry is 1.98 Å.

Percentile scores (ranging between 0-100) for global validation metrics of the entry are shown in the following graphic. The table shows the number of entries on which the scores are based.



Metric	Whole archive (#Entries)	Similar resolution (#Entries, resolution range(Å))
R_{free}	130704	11647 (2.00-1.96)
Clashscore	141614	1014 (1.98-1.98)
Ramachandran outliers	138981	1006 (1.98-1.98)
Sidechain outliers	138945	1006 (1.98-1.98)
RSRZ outliers	127900	11410 (2.00-1.96)

The table below summarises the geometric issues observed across the polymeric chains and their fit to the electron density. The red, orange, yellow and green segments of the lower bar indicate the fraction of residues that contain outliers for ≥ 3 , 2, 1 and 0 types of geometric quality criteria respectively. A grey segment represents the fraction of residues that are not modelled. The numeric value for each fraction is indicated below the corresponding segment, with a dot representing fractions $\leq 5\%$. The upper red bar (where present) indicates the fraction of residues that have poor fit to the electron density. The numeric value is given above the bar.

Mol	Chain	Length	Quality of chain
1	A	494	

2 Entry composition [i](#)

There are 5 unique types of molecules in this entry. The entry contains 3875 atoms, of which 0 are hydrogens and 0 are deuteriums.

In the tables below, the ZeroOcc column contains the number of atoms modelled with zero occupancy, the AltConf column contains the number of residues with at least one atom in alternate conformation and the Trace column contains the number of residues modelled with at most 2 atoms.

- Molecule 1 is a protein called Menin.

Mol	Chain	Residues	Atoms					ZeroOcc	AltConf	Trace
			Total	C	N	O	S			
1	A	462	3640	2328	623	674	15	0	1	0

There are 96 discrepancies between the modelled and reference sequences:

Chain	Residue	Modelled	Actual	Comment	Reference
A	0	ALA	-	expression tag	UNP A0A024R5E3
A	?	-	ILE	deletion	UNP A0A024R5E3
A	?	-	PRO	deletion	UNP A0A024R5E3
A	?	-	THR	deletion	UNP A0A024R5E3
A	?	-	ASN	deletion	UNP A0A024R5E3
A	?	-	VAL	deletion	UNP A0A024R5E3
A	?	-	PRO	deletion	UNP A0A024R5E3
A	?	-	GLU	deletion	UNP A0A024R5E3
A	?	-	LEU	deletion	UNP A0A024R5E3
A	?	-	THR	deletion	UNP A0A024R5E3
A	?	-	PHE	deletion	UNP A0A024R5E3
A	?	-	GLN	deletion	UNP A0A024R5E3
A	?	-	PRO	deletion	UNP A0A024R5E3
A	?	-	SER	deletion	UNP A0A024R5E3
A	?	-	PRO	deletion	UNP A0A024R5E3
A	?	-	ALA	deletion	UNP A0A024R5E3
A	?	-	PRO	deletion	UNP A0A024R5E3
A	?	-	ASP	deletion	UNP A0A024R5E3
A	?	-	PRO	deletion	UNP A0A024R5E3
A	?	-	PRO	deletion	UNP A0A024R5E3
A	?	-	GLY	deletion	UNP A0A024R5E3
A	?	-	GLU	deletion	UNP A0A024R5E3
A	?	-	GLU	deletion	UNP A0A024R5E3
A	?	-	ARG	deletion	UNP A0A024R5E3
A	?	-	PRO	deletion	UNP A0A024R5E3
A	?	-	GLY	deletion	UNP A0A024R5E3
A	?	-	GLU	deletion	UNP A0A024R5E3

Continued on next page...

Continued from previous page...

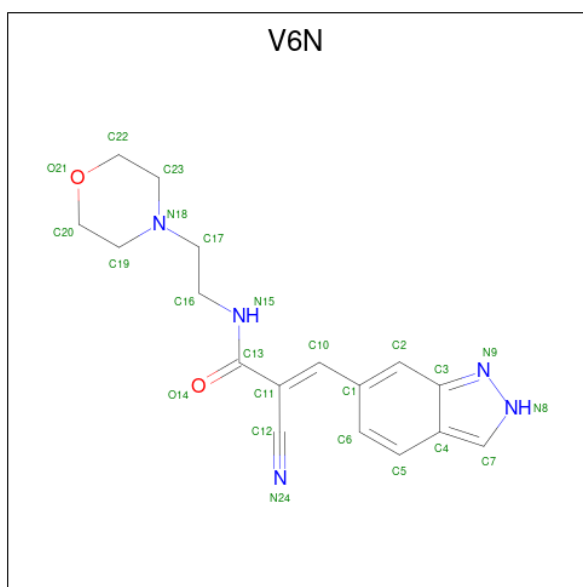
Chain	Residue	Modelled	Actual	Comment	Reference
A	?	-	GLN	deletion	UNP A0A024R5E3
A	?	-	SER	deletion	UNP A0A024R5E3
A	?	-	GLN	deletion	UNP A0A024R5E3
A	?	-	GLY	deletion	UNP A0A024R5E3
A	?	-	THR	deletion	UNP A0A024R5E3
A	?	-	ARG	deletion	UNP A0A024R5E3
A	?	-	GLU	deletion	UNP A0A024R5E3
A	?	-	ALA	deletion	UNP A0A024R5E3
A	?	-	GLU	deletion	UNP A0A024R5E3
A	?	-	ALA	deletion	UNP A0A024R5E3
A	?	-	ALA	deletion	UNP A0A024R5E3
A	?	-	GLU	deletion	UNP A0A024R5E3
A	?	-	ALA	deletion	UNP A0A024R5E3
A	?	-	GLU	deletion	UNP A0A024R5E3
A	?	-	GLU	deletion	UNP A0A024R5E3
A	?	-	PRO	deletion	UNP A0A024R5E3
A	?	-	TRP	deletion	UNP A0A024R5E3
A	?	-	GLY	deletion	UNP A0A024R5E3
A	?	-	GLU	deletion	UNP A0A024R5E3
A	?	-	GLU	deletion	UNP A0A024R5E3
A	?	-	ALA	deletion	UNP A0A024R5E3
A	?	-	ARG	deletion	UNP A0A024R5E3
A	?	-	GLU	deletion	UNP A0A024R5E3
A	?	-	GLY	deletion	UNP A0A024R5E3
A	?	-	ARG	deletion	UNP A0A024R5E3
A	?	-	ARG	deletion	UNP A0A024R5E3
A	?	-	ARG	deletion	UNP A0A024R5E3
A	?	-	GLY	deletion	UNP A0A024R5E3
A	?	-	PRO	deletion	UNP A0A024R5E3
A	?	-	ARG	deletion	UNP A0A024R5E3
A	?	-	ARG	deletion	UNP A0A024R5E3
A	?	-	GLU	deletion	UNP A0A024R5E3
A	?	-	SER	deletion	UNP A0A024R5E3
A	?	-	LYS	deletion	UNP A0A024R5E3
A	?	-	PRO	deletion	UNP A0A024R5E3
A	?	-	GLU	deletion	UNP A0A024R5E3
A	?	-	GLU	deletion	UNP A0A024R5E3
A	?	-	PRO	deletion	UNP A0A024R5E3
A	?	-	PRO	deletion	UNP A0A024R5E3
A	?	-	PRO	deletion	UNP A0A024R5E3
A	?	-	PRO	deletion	UNP A0A024R5E3
A	?	-	LYS	deletion	UNP A0A024R5E3

Continued on next page...

Continued from previous page...

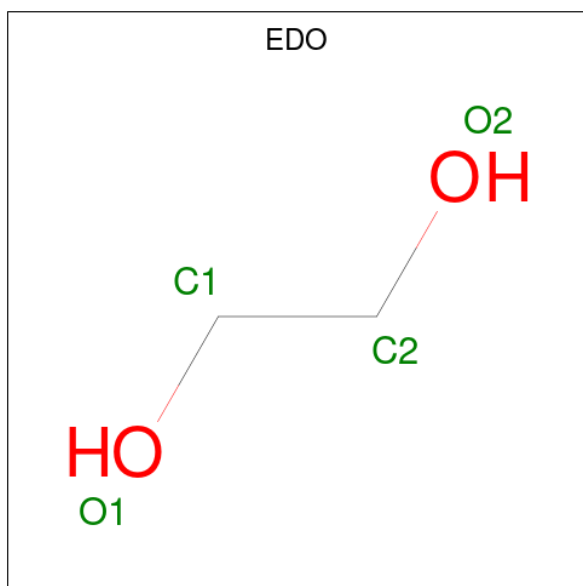
Chain	Residue	Modelled	Actual	Comment	Reference
A	?	-	LYS	deletion	UNP A0A024R5E3
A	?	-	PRO	deletion	UNP A0A024R5E3
A	?	-	ALA	deletion	UNP A0A024R5E3
A	?	-	LEU	deletion	UNP A0A024R5E3
A	?	-	ASP	deletion	UNP A0A024R5E3
A	?	-	LYS	deletion	UNP A0A024R5E3
A	?	-	GLY	deletion	UNP A0A024R5E3
A	?	-	LEU	deletion	UNP A0A024R5E3
A	?	-	GLY	deletion	UNP A0A024R5E3
A	?	-	THR	deletion	UNP A0A024R5E3
A	?	-	GLY	deletion	UNP A0A024R5E3
A	?	-	GLN	deletion	UNP A0A024R5E3
A	461	THR	ALA	conflict	UNP A0A024R5E3
A	523	ALA	SER	conflict	UNP A0A024R5E3
A	525	THR	PRO	conflict	UNP A0A024R5E3
A	526	ALA	PRO	conflict	UNP A0A024R5E3
A	?	-	LYS	deletion	UNP A0A024R5E3
A	?	-	PRO	deletion	UNP A0A024R5E3
A	?	-	PRO	deletion	UNP A0A024R5E3
A	?	-	GLY	deletion	UNP A0A024R5E3
A	?	-	THR	deletion	UNP A0A024R5E3
A	?	-	VAL	deletion	UNP A0A024R5E3
A	?	-	ALA	deletion	UNP A0A024R5E3
A	?	-	GLY	deletion	UNP A0A024R5E3
A	?	-	THR	deletion	UNP A0A024R5E3
A	?	-	ALA	deletion	UNP A0A024R5E3
A	?	-	ARG	deletion	UNP A0A024R5E3

- Molecule 2 is ({E})-2-cyano-3-(2 {H}-indazol-6-yl)- {N}-(2-morpholin-4-ylethyl)prop-2-en amide (three-letter code: V6N) (formula: C₁₇H₁₉N₅O₂) (labeled as "Ligand of Interest" by depositor).



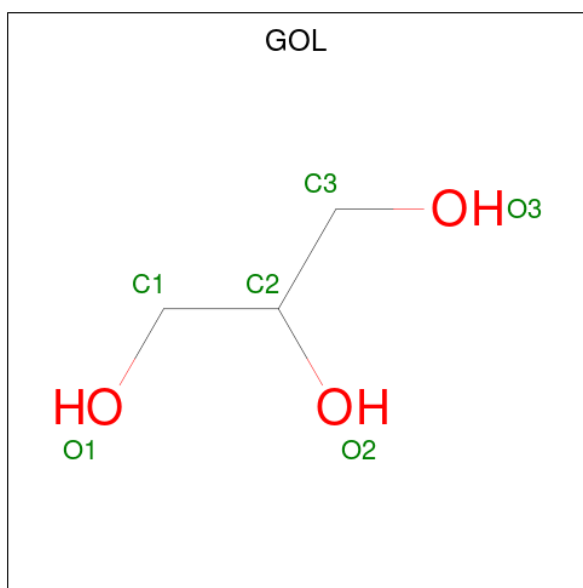
Mol	Chain	Residues	Atoms				ZeroOcc	AltConf
			Total	C	N	O		
2	A	1	24	17	5	2	0	0

- Molecule 3 is 1,2-ETHANEDIOL (three-letter code: EDO) (formula: C₂H₆O₂).



Mol	Chain	Residues	Atoms			ZeroOcc	AltConf
			Total	C	O		
3	A	1	4	2	2	0	0
3	A	1	4	2	2	0	0
3	A	1	4	2	2	0	0

- Molecule 4 is GLYCEROL (three-letter code: GOL) (formula: $C_3H_8O_3$).



Mol	Chain	Residues	Atoms	ZeroOcc	AltConf
4	A	1	Total C O 6 3 3	0	0
4	A	1	Total C O 6 3 3	0	0

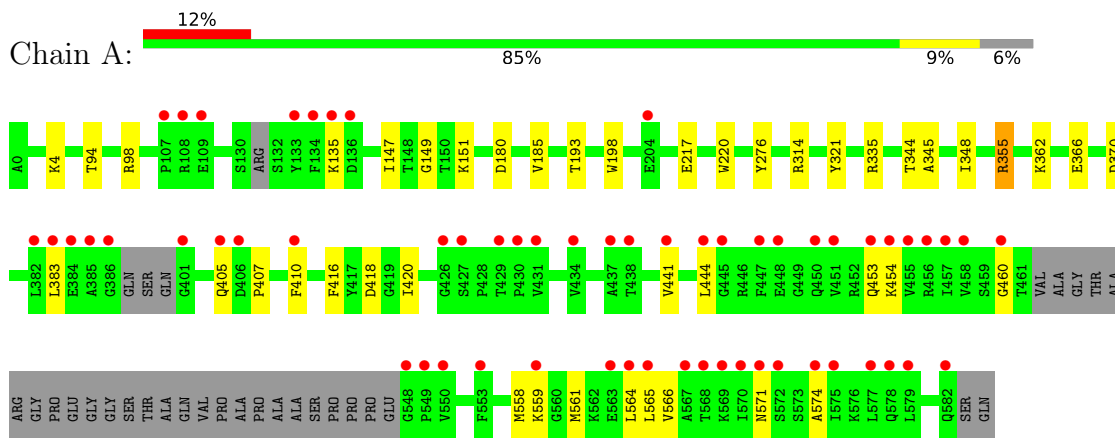
- Molecule 5 is water.

Mol	Chain	Residues	Atoms	ZeroOcc	AltConf
5	A	187	Total O 187 187	0	0

3 Residue-property plots [i](#)

These plots are drawn for all protein, RNA, DNA and oligosaccharide chains in the entry. The first graphic for a chain summarises the proportions of the various outlier classes displayed in the second graphic. The second graphic shows the sequence view annotated by issues in geometry and electron density. Residues are color-coded according to the number of geometric quality criteria for which they contain at least one outlier: green = 0, yellow = 1, orange = 2 and red = 3 or more. A red dot above a residue indicates a poor fit to the electron density ($RSRZ > 2$). Stretches of 2 or more consecutive residues without any outlier are shown as a green connector. Residues present in the sample, but not in the model, are shown in grey.

- Molecule 1: Menin



4 Data and refinement statistics

Property	Value	Source
Space group	P 43 2 2	Depositor
Cell constants a, b, c, α , β , γ	107.19Å 107.19Å 107.44Å 90.00° 90.00° 90.00°	Depositor
Resolution (Å)	48.03 – 1.98 48.03 – 1.98	Depositor EDS
% Data completeness (in resolution range)	99.9 (48.03-1.98) 99.9 (48.03-1.98)	Depositor EDS
R_{merge}	0.08	Depositor
R_{sym}	(Not available)	Depositor
$\langle I/\sigma(I) \rangle$ ¹	3.70 (at 1.98Å)	Xtriage
Refinement program	PHENIX 1.11.1_2575	Depositor
R, R_{free}	0.211 , 0.243 0.211 , 0.243	Depositor DCC
R_{free} test set	2392 reflections (5.41%)	wwPDB-VP
Wilson B-factor (Å ²)	35.2	Xtriage
Anisotropy	0.066	Xtriage
Bulk solvent k_{sol} (e/Å ³), B_{sol} (Å ²)	(Not available) , (Not available)	EDS
L-test for twinning ²	$\langle L \rangle = 0.50$, $\langle L^2 \rangle = 0.33$	Xtriage
Estimated twinning fraction	0.014 for -h,l,k 0.004 for -l,-k,-h	Xtriage
F_o, F_c correlation	0.95	EDS
Total number of atoms	3875	wwPDB-VP
Average B, all atoms (Å ²)	45.0	wwPDB-VP

Xtriage's analysis on translational NCS is as follows: *The largest off-origin peak in the Patterson function is 3.63% of the height of the origin peak. No significant pseudotranslation is detected.*

¹Intensities estimated from amplitudes.

²Theoretical values of $\langle |L| \rangle$, $\langle L^2 \rangle$ for acentric reflections are 0.5, 0.333 respectively for untwinned datasets, and 0.375, 0.2 for perfectly twinned datasets.

5 Model quality [i](#)

5.1 Standard geometry [i](#)

Bond lengths and bond angles in the following residue types are not validated in this section: GOL, EDO, V6N

The Z score for a bond length (or angle) is the number of standard deviations the observed value is removed from the expected value. A bond length (or angle) with $|Z| > 5$ is considered an outlier worth inspection. RMSZ is the root-mean-square of all Z scores of the bond lengths (or angles).

Mol	Chain	Bond lengths		Bond angles	
		RMSZ	# Z >5	RMSZ	# Z >5
1	A	0.53	0/3722	0.58	0/5043

There are no bond length outliers.

There are no bond angle outliers.

There are no chirality outliers.

There are no planarity outliers.

5.2 Too-close contacts [i](#)

In the following table, the Non-H and H(model) columns list the number of non-hydrogen atoms and hydrogen atoms in the chain respectively. The H(added) column lists the number of hydrogen atoms added and optimized by MolProbity. The Clashes column lists the number of clashes within the asymmetric unit, whereas Symm-Clashes lists symmetry-related clashes.

Mol	Chain	Non-H	H(model)	H(added)	Clashes	Symm-Clashes
1	A	3640	0	3604	31	0
2	A	24	0	0	0	0
3	A	12	0	18	1	0
4	A	12	0	16	0	0
5	A	187	0	0	3	0
All	All	3875	0	3638	32	0

The all-atom clashscore is defined as the number of clashes found per 1000 atoms (including hydrogen atoms). The all-atom clashscore for this structure is 4.

All (32) close contacts within the same asymmetric unit are listed below, sorted by their clash magnitude.

Atom-1	Atom-2	Interatomic distance (Å)	Clash overlap (Å)
1:A:453:GLN:HA	1:A:566:VAL:CG1	2.22	0.69
1:A:564:LEU:HD12	1:A:564:LEU:N	2.13	0.64
1:A:564:LEU:H	1:A:564:LEU:CD1	2.13	0.61
1:A:441:VAL:HA	1:A:444:LEU:HD12	1.85	0.59
1:A:460:GLY:H	1:A:559:LYS:HE2	1.66	0.59
1:A:418:ASP:HA	1:A:558:MET:HG3	1.85	0.58
1:A:566:VAL:HG12	1:A:566:VAL:O	2.03	0.58
1:A:564:LEU:HD12	1:A:564:LEU:H	1.69	0.57
1:A:410:PHE:HE1	1:A:444:LEU:HD23	1.68	0.57
1:A:453:GLN:HA	1:A:566:VAL:HG13	1.87	0.56
1:A:383:LEU:HD21	1:A:405:GLN:OE1	2.07	0.54
1:A:345:ALA:HA	1:A:348:ILE:HG22	1.89	0.53
1:A:416:PHE:CZ	1:A:420:ILE:HD11	2.43	0.53
1:A:564:LEU:N	1:A:564:LEU:CD1	2.72	0.53
1:A:217:GLU:OE1	1:A:355:ARG:NH2	2.43	0.52
1:A:185:VAL:HG12	1:A:193:THR:HG22	1.90	0.52
1:A:321:TYR:HB2	1:A:344:THR:HG22	1.94	0.49
1:A:314:ARG:HD3	5:A:733:HOH:O	2.13	0.49
1:A:561:MET:HA	1:A:564:LEU:HD13	1.95	0.48
1:A:453:GLN:HG2	1:A:566:VAL:HG12	1.96	0.47
1:A:94:THR:O	1:A:98:ARG:HG3	2.17	0.45
1:A:180:ASP:HB2	1:A:220:TRP:CH2	2.53	0.44
1:A:147:ILE:HD13	1:A:147:ILE:HA	1.89	0.44
1:A:135:LYS:HB3	1:A:198:TRP:CZ2	2.52	0.43
3:A:606:EDO:H22	5:A:813:HOH:O	2.17	0.43
1:A:407:PRO:HG3	1:A:454:LYS:HD2	1.99	0.42
1:A:149:GLY:O	1:A:151:LYS:HG3	2.20	0.42
1:A:4:LYS:HD3	5:A:715:HOH:O	2.20	0.42
1:A:362:LYS:O	1:A:366:GLU:HG2	2.19	0.42
1:A:410:PHE:CE1	1:A:444:LEU:HD23	2.53	0.41
1:A:366:GLU:O	1:A:370[A]:ASP:HB3	2.20	0.41
1:A:571:ASN:HB3	1:A:574:ALA:HB3	2.03	0.41

There are no symmetry-related clashes.

5.3 Torsion angles [i](#)

5.3.1 Protein backbone [i](#)

In the following table, the Percentiles column shows the percent Ramachandran outliers of the chain as a percentile score with respect to all X-ray entries followed by that with respect to entries of similar resolution.

The Analysed column shows the number of residues for which the backbone conformation was analysed, and the total number of residues.

Mol	Chain	Analysed	Favoured	Allowed	Outliers	Percentiles	
1	A	455/494 (92%)	439 (96%)	16 (4%)	0	100	100

There are no Ramachandran outliers to report.

5.3.2 Protein sidechains [i](#)

In the following table, the Percentiles column shows the percent sidechain outliers of the chain as a percentile score with respect to all X-ray entries followed by that with respect to entries of similar resolution.

The Analysed column shows the number of residues for which the sidechain conformation was analysed, and the total number of residues.

Mol	Chain	Analysed	Rotameric	Outliers	Percentiles	
1	A	384/408 (94%)	380 (99%)	4 (1%)	76	73

All (4) residues with a non-rotameric sidechain are listed below:

Mol	Chain	Res	Type
1	A	276	TYR
1	A	335	ARG
1	A	355	ARG
1	A	565	LEU

Sometimes sidechains can be flipped to improve hydrogen bonding and reduce clashes. All (1) such sidechains are listed below:

Mol	Chain	Res	Type
1	A	442	GLN

5.3.3 RNA [i](#)

There are no RNA molecules in this entry.

5.4 Non-standard residues in protein, DNA, RNA chains [i](#)

There are no non-standard protein/DNA/RNA residues in this entry.

5.5 Carbohydrates [i](#)

There are no monosaccharides in this entry.

5.6 Ligand geometry [i](#)

6 ligands are modelled in this entry.

In the following table, the Counts columns list the number of bonds (or angles) for which Mogul statistics could be retrieved, the number of bonds (or angles) that are observed in the model and the number of bonds (or angles) that are defined in the Chemical Component Dictionary. The Link column lists molecule types, if any, to which the group is linked. The Z score for a bond length (or angle) is the number of standard deviations the observed value is removed from the expected value. A bond length (or angle) with $|Z| > 2$ is considered an outlier worth inspection. RMSZ is the root-mean-square of all Z scores of the bond lengths (or angles).

Mol	Type	Chain	Res	Link	Bond lengths			Bond angles		
					Counts	RMSZ	# Z > 2	Counts	RMSZ	# Z > 2
2	V6N	A	601	-	24,26,26	1.00	1 (4%)	30,34,34	1.01	1 (3%)
4	GOL	A	603	-	5,5,5	0.26	0	5,5,5	0.57	0
4	GOL	A	604	-	5,5,5	0.27	0	5,5,5	0.78	0
3	EDO	A	606	-	3,3,3	0.59	0	2,2,2	0.50	0
3	EDO	A	605	-	3,3,3	0.61	0	2,2,2	0.42	0
3	EDO	A	602	-	3,3,3	0.55	0	2,2,2	0.19	0

In the following table, the Chirals column lists the number of chiral outliers, the number of chiral centers analysed, the number of these observed in the model and the number defined in the Chemical Component Dictionary. Similar counts are reported in the Torsion and Rings columns. '-' means no outliers of that kind were identified.

Mol	Type	Chain	Res	Link	Chirals	Torsions	Rings
2	V6N	A	601	-	-	2/15/24/24	0/3/3/3
4	GOL	A	603	-	-	2/4/4/4	-
4	GOL	A	604	-	-	2/4/4/4	-
3	EDO	A	606	-	-	0/1/1/1	-
3	EDO	A	605	-	-	0/1/1/1	-
3	EDO	A	602	-	-	1/1/1/1	-

All (1) bond length outliers are listed below:

Mol	Chain	Res	Type	Atoms	Z	Observed(Å)	Ideal(Å)
2	A	601	V6N	C11-C13	-4.09	1.42	1.50

All (1) bond angle outliers are listed below:

Mol	Chain	Res	Type	Atoms	Z	Observed(°)	Ideal(°)
2	A	601	V6N	C11-C13-N15	2.21	119.06	116.86

There are no chirality outliers.

All (7) torsion outliers are listed below:

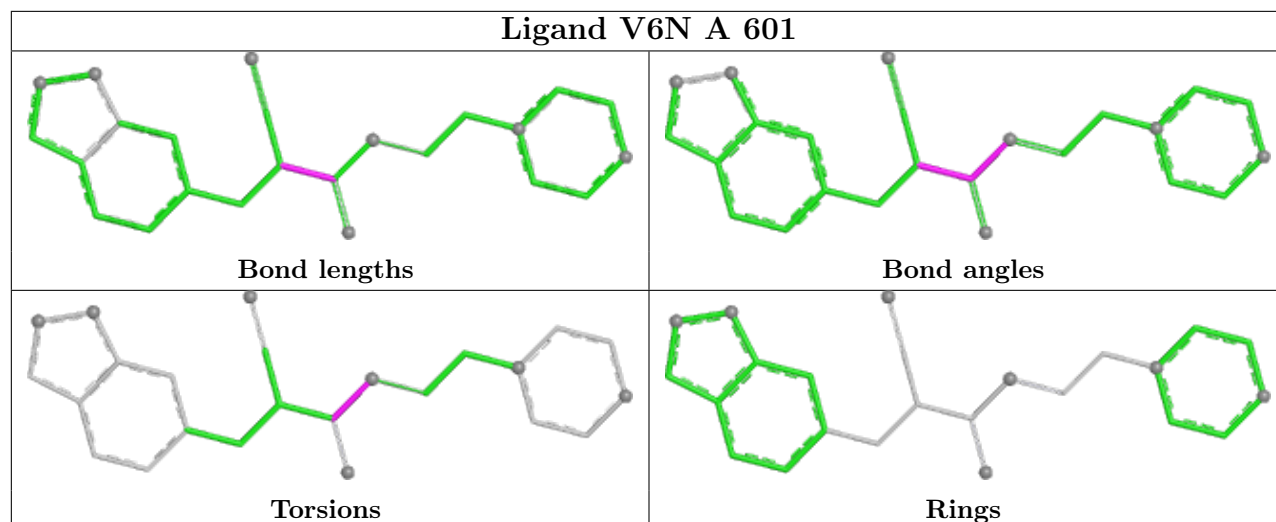
Mol	Chain	Res	Type	Atoms
2	A	601	V6N	C11-C13-N15-C16
4	A	603	GOL	O1-C1-C2-C3
2	A	601	V6N	O14-C13-N15-C16
4	A	604	GOL	O1-C1-C2-C3
4	A	603	GOL	O1-C1-C2-O2
4	A	604	GOL	O1-C1-C2-O2
3	A	602	EDO	O1-C1-C2-O2

There are no ring outliers.

1 monomer is involved in 1 short contact:

Mol	Chain	Res	Type	Clashes	Symm-Clashes
3	A	606	EDO	1	0

The following is a two-dimensional graphical depiction of Mogul quality analysis of bond lengths, bond angles, torsion angles, and ring geometry for all instances of the Ligand of Interest. In addition, ligands with molecular weight > 250 and outliers as shown on the validation Tables will also be included. For torsion angles, if less than 5% of the Mogul distribution of torsion angles is within 10 degrees of the torsion angle in question, then that torsion angle is considered an outlier. Any bond that is central to one or more torsion angles identified as an outlier by Mogul will be highlighted in the graph. For rings, the root-mean-square deviation (RMSD) between the ring in question and similar rings identified by Mogul is calculated over all ring torsion angles. If the average RMSD is greater than 60 degrees and the minimal RMSD between the ring in question and any Mogul-identified rings is also greater than 60 degrees, then that ring is considered an outlier. The outliers are highlighted in purple. The color gray indicates Mogul did not find sufficient equivalents in the CSD to analyse the geometry.



5.7 Other polymers [i](#)

There are no such residues in this entry.

5.8 Polymer linkage issues [i](#)

There are no chain breaks in this entry.

6 Fit of model and data

6.1 Protein, DNA and RNA chains

In the following table, the column labelled ‘#RSRZ> 2’ contains the number (and percentage) of RSRZ outliers, followed by percent RSRZ outliers for the chain as percentile scores relative to all X-ray entries and entries of similar resolution. The OWAB column contains the minimum, median, 95th percentile and maximum values of the occupancy-weighted average B-factor per residue. The column labelled ‘Q< 0.9’ lists the number of (and percentage) of residues with an average occupancy less than 0.9.

Mol	Chain	Analysed	<RSRZ>	#RSRZ>2	OWAB(Å ²)	Q<0.9
1	A	462/494 (93%)	0.64	59 (12%) 3 4	21, 41, 82, 94	0

All (59) RSRZ outliers are listed below:

Mol	Chain	Res	Type	RSRZ
1	A	451	VAL	6.1
1	A	426	GLY	6.0
1	A	460	GLY	5.1
1	A	570	ILE	4.9
1	A	448	GLU	4.9
1	A	577	LEU	4.8
1	A	429	THR	4.7
1	A	450	GLN	4.7
1	A	454	LYS	4.5
1	A	565	LEU	4.5
1	A	455	VAL	4.5
1	A	548	GLY	4.3
1	A	453	GLN	4.1
1	A	427	SER	4.1
1	A	458	VAL	4.0
1	A	568	THR	4.0
1	A	563	GLU	4.0
1	A	136	ASP	3.9
1	A	579	LEU	3.9
1	A	445	GLY	3.9
1	A	430	PRO	3.8
1	A	447	PHE	3.8
1	A	567	ALA	3.7
1	A	574	ALA	3.6
1	A	569	LYS	3.6
1	A	550	VAL	3.5
1	A	383	LEU	3.5

Continued on next page...

Continued from previous page...

Mol	Chain	Res	Type	RSRZ
1	A	456	ARG	3.3
1	A	109	GLU	3.2
1	A	575	ILE	3.2
1	A	444	LEU	3.2
1	A	382	LEU	3.1
1	A	133	TYR	3.1
1	A	385	ALA	3.0
1	A	571	ASN	3.0
1	A	386	GLY	3.0
1	A	384	GLU	2.9
1	A	108	ARG	2.8
1	A	578	GLN	2.7
1	A	437	ALA	2.6
1	A	553	PHE	2.6
1	A	401	GLY	2.6
1	A	434	VAL	2.5
1	A	559	LYS	2.4
1	A	431	VAL	2.4
1	A	549	PRO	2.4
1	A	564	LEU	2.4
1	A	134	PHE	2.4
1	A	572	SER	2.4
1	A	135	LYS	2.3
1	A	406	ASP	2.3
1	A	438	THR	2.3
1	A	405	GLN	2.2
1	A	410	PHE	2.2
1	A	107	PRO	2.1
1	A	204	GLU	2.1
1	A	457	ILE	2.1
1	A	582	GLN	2.1
1	A	441	VAL	2.0

6.2 Non-standard residues in protein, DNA, RNA chains [i](#)

There are no non-standard protein/DNA/RNA residues in this entry.

6.3 Carbohydrates [i](#)

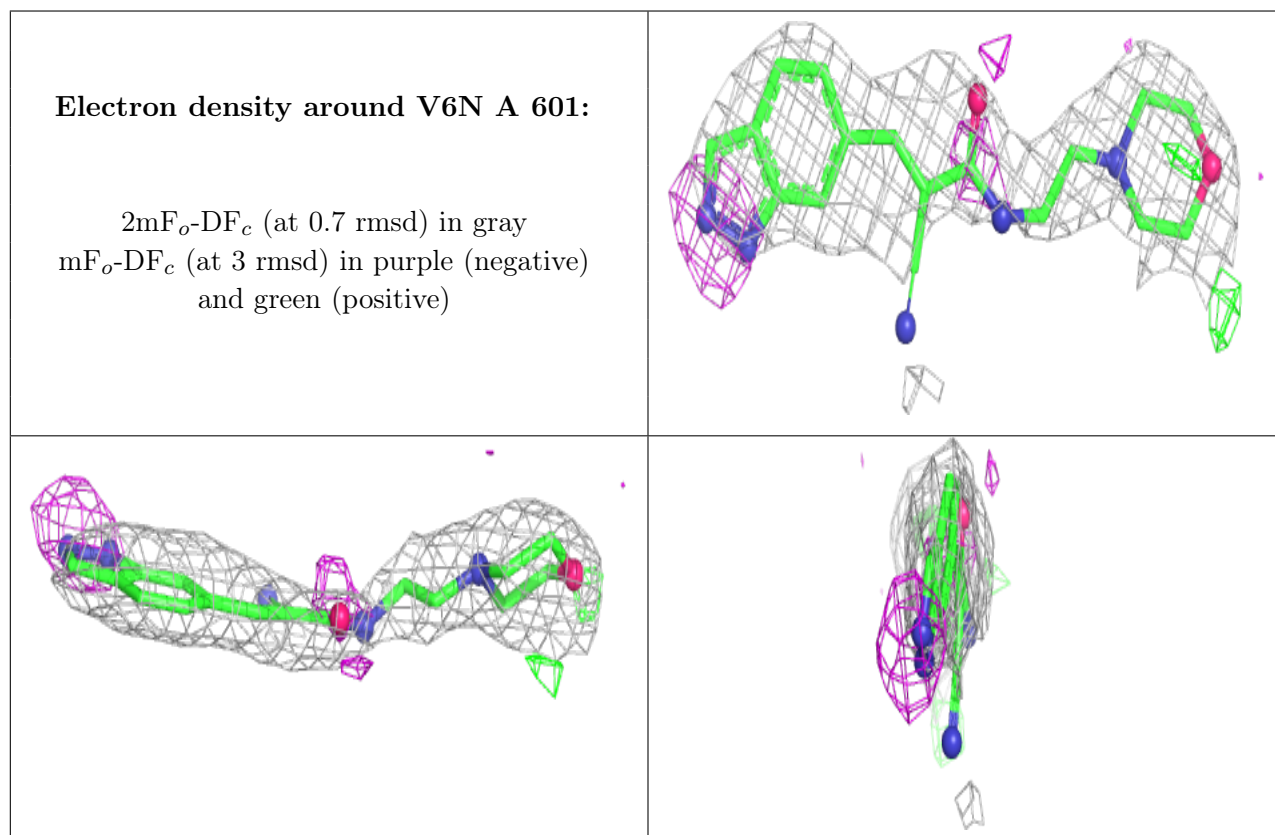
There are no monosaccharides in this entry.

6.4 Ligands [i](#)

In the following table, the Atoms column lists the number of modelled atoms in the group and the number defined in the chemical component dictionary. The B-factors column lists the minimum, median, 95th percentile and maximum values of B factors of atoms in the group. The column labelled 'Q< 0.9' lists the number of atoms with occupancy less than 0.9.

Mol	Type	Chain	Res	Atoms	RSCC	RSR	B-factors(Å ²)	Q<0.9
4	GOL	A	604	6/6	0.75	0.18	52,58,61,65	0
2	V6N	A	601	24/24	0.77	0.23	44,54,61,63	0
3	EDO	A	606	4/4	0.78	0.23	45,49,53,54	0
4	GOL	A	603	6/6	0.81	0.20	60,64,69,73	0
3	EDO	A	605	4/4	0.82	0.11	46,51,53,57	0
3	EDO	A	602	4/4	0.94	0.13	39,51,56,60	0

The following is a graphical depiction of the model fit to experimental electron density of all instances of the Ligand of Interest. In addition, ligands with molecular weight > 250 and outliers as shown on the geometry validation Tables will also be included. Each fit is shown from different orientation to approximate a three-dimensional view.



6.5 Other polymers [i](#)

There are no such residues in this entry.