



Full wwPDB X-ray Structure Validation Report ⓘ

Dec 8, 2023 – 07:20 am GMT

PDB ID : 1O92
Title : Methionine Adenosyltransferase complexed with ADP and a L-methionine analogue
Authors : Gonzalez, B.; Pajares, M.A.; Hermoso, J.A.; Sanz-Aparicio, J.
Deposited on : 2002-12-10
Resolution : 3.19 Å(reported)

This is a Full wwPDB X-ray Structure Validation Report for a publicly released PDB entry.

We welcome your comments at validation@mail.wwpdb.org

A user guide is available at

<https://www.wwpdb.org/validation/2017/XrayValidationReportHelp>

with specific help available everywhere you see the ⓘ symbol.

The types of validation reports are described at

<http://www.wwpdb.org/validation/2017/FAQs#types>.

The following versions of software and data (see [references ⓘ](#)) were used in the production of this report:

MolProbity : 4.02b-467
Mogul : 1.8.4, CSD as541be (2020)
Xtrriage (Phenix) : **NOT EXECUTED**
EDS : **NOT EXECUTED**
buster-report : 1.1.7 (2018)
Percentile statistics : 20191225.v01 (using entries in the PDB archive December 25th 2019)
Ideal geometry (proteins) : Engh & Huber (2001)
Ideal geometry (DNA, RNA) : Parkinson et al. (1996)
Validation Pipeline (wwPDB-VP) : 2.36

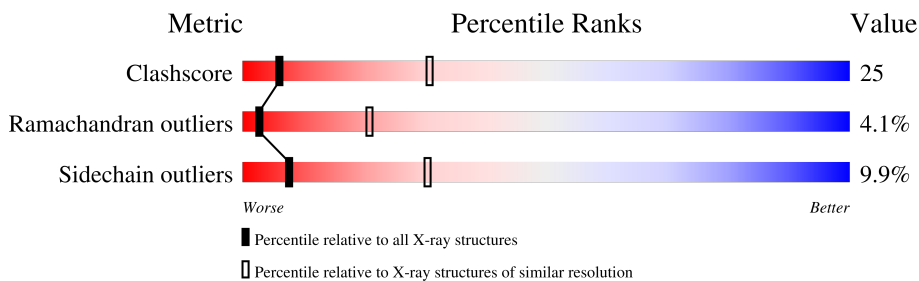
1 Overall quality at a glance

The following experimental techniques were used to determine the structure:

X-RAY DIFFRACTION

The reported resolution of this entry is 3.19 Å.

Percentile scores (ranging between 0-100) for global validation metrics of the entry are shown in the following graphic. The table shows the number of entries on which the scores are based.



Metric	Whole archive (#Entries)	Similar resolution (#Entries, resolution range(Å))
Clashscore	141614	1253 (3.20-3.20)
Ramachandran outliers	138981	1234 (3.20-3.20)
Sidechain outliers	138945	1233 (3.20-3.20)

The table below summarises the geometric issues observed across the polymeric chains and their fit to the electron density. The red, orange, yellow and green segments of the lower bar indicate the fraction of residues that contain outliers for ≥ 3 , 2, 1 and 0 types of geometric quality criteria respectively. A grey segment represents the fraction of residues that are not modelled. The numeric value for each fraction is indicated below the corresponding segment, with a dot representing fractions $\leq 5\%$.

Note EDS was not executed.

Mol	Chain	Length	Quality of chain
1	A	396	54% (green), 31% (yellow), 7% (orange), 7% (red), 7% (grey)
1	B	396	55% (green), 29% (yellow), 8% (orange), 7% (red), 7% (grey)

The following table lists non-polymeric compounds, carbohydrate monomers and non-standard residues in protein, DNA, RNA chains that are outliers for geometric or electron-density-fit criteria:

Mol	Type	Chain	Res	Chirality	Geometry	Clashes	Electron density
3	PO4	A	1399	-	-	X	-
3	PO4	A	1401	-	-	X	-
3	PO4	B	1400	-	-	X	-
5	ADP	B	1397	-	-	X	-

2 Entry composition [i](#)

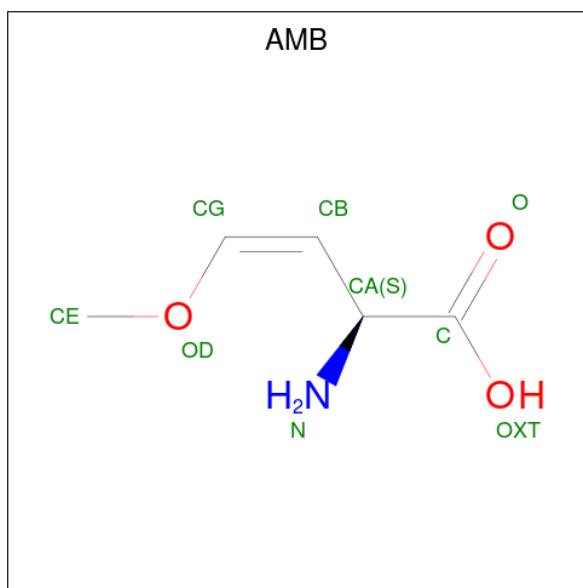
There are 7 unique types of molecules in this entry. The entry contains 5932 atoms, of which 0 are hydrogens and 0 are deuteriums.

In the tables below, the ZeroOcc column contains the number of atoms modelled with zero occupancy, the AltConf column contains the number of residues with at least one atom in alternate conformation and the Trace column contains the number of residues modelled with at most 2 atoms.

- Molecule 1 is a protein called S-ADENOSYLMETHIONINE SYNTHETASE.

Mol	Chain	Residues	Atoms					ZeroOcc	AltConf	Trace
			Total	C	N	O	S			
1	A	368	2846	1803	491	536	16	0	0	0
1	B	368	2846	1803	491	536	16	0	0	0

- Molecule 2 is L-2-AMINO-4-METHOXY-CIS-BUT-3-ENOIC ACID (three-letter code: AMB) (formula: C₅H₉NO₃).



Mol	Chain	Residues	Atoms				ZeroOcc	AltConf
			Total	C	N	O		
2	A	1	9	5	1	3	0	0

- Molecule 3 is PHOSPHATE ION (three-letter code: PO4) (formula: O₄P).



Mol	Chain	Residues	Atoms	ZeroOcc	AltConf
3	A	1	Total O P 5 4 1	0	0
3	A	1	Total O P 5 4 1	0	0
3	B	1	Total O P 5 4 1	0	0

- Molecule 4 is MAGNESIUM ION (three-letter code: MG) (formula: Mg).

Mol	Chain	Residues	Atoms	ZeroOcc	AltConf
4	A	3	Total Mg 3 3	0	0

- Molecule 5 is ADENOSINE-5'-DIPHOSPHATE (three-letter code: ADP) (formula: C₁₀H₁₅N₅O₁₀P₂).



Mol	Chain	Residues	Atoms					ZeroOcc	AltConf
			Total	C	N	O	P		
5	B	1	27	10	5	10	2	0	0

- Molecule 6 is POTASSIUM ION (three-letter code: K) (formula: K).

Mol	Chain	Residues	Atoms		ZeroOcc	AltConf
			Total	K		
6	B	2	2	2	0	0

- Molecule 7 is water.

Mol	Chain	Residues	Atoms		ZeroOcc	AltConf
			Total	O		
7	A	96	96	96	0	0
7	B	88	88	88	0	0

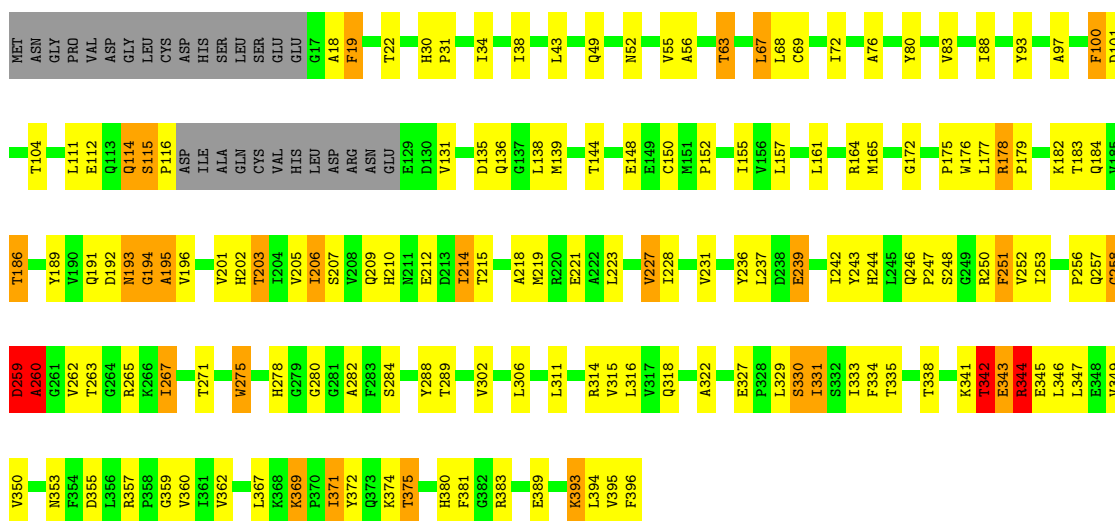
3 Residue-property plots [i](#)

These plots are drawn for all protein, RNA, DNA and oligosaccharide chains in the entry. The first graphic for a chain summarises the proportions of the various outlier classes displayed in the second graphic. The second graphic shows the sequence view annotated by issues in geometry. Residues are color-coded according to the number of geometric quality criteria for which they contain at least one outlier: green = 0, yellow = 1, orange = 2 and red = 3 or more. Stretches of 2 or more consecutive residues without any outlier are shown as a green connector. Residues present in the sample, but not in the model, are shown in grey.

Note EDS was not executed.

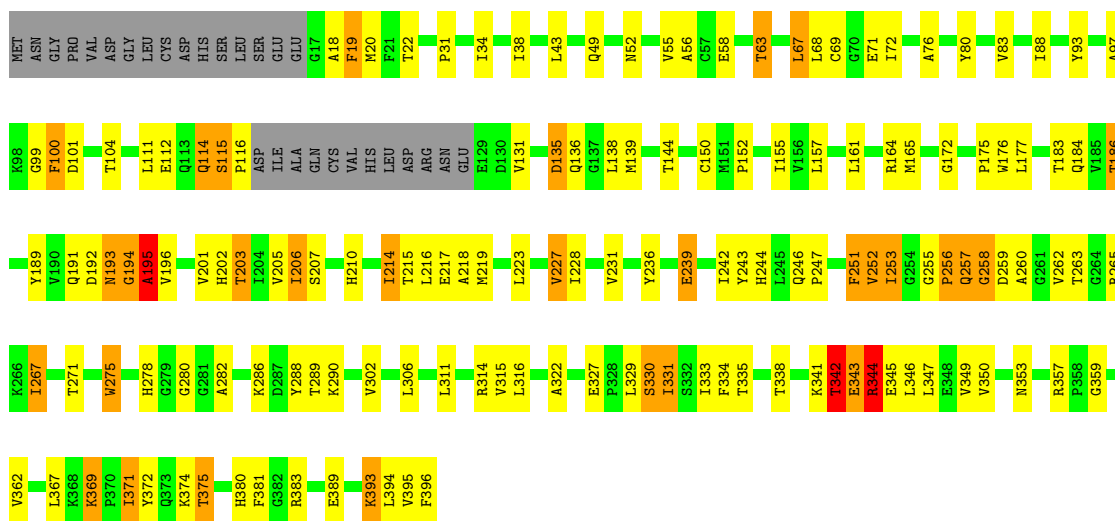
- Molecule 1: S-ADENOSYLMETHIONINE SYNTHETASE

Chain A:  54% 31% 7% • 7%



- Molecule 1: S-ADENOSYLMETHIONINE SYNTHETASE

Chain B:  55% 29% 8% • 7%



4 Data and refinement statistics

Xtrriage (Phenix) and EDS were not executed - this section is therefore incomplete.

Property	Value	Source
Space group	P 41 2 2	Depositor
Cell constants a, b, c, α , β , γ	115.14Å 115.14Å 160.45Å 90.00° 90.00° 90.00°	Depositor
Resolution (Å)	8.00 – 3.19	Depositor
% Data completeness (in resolution range)	94.4 (8.00-3.19)	Depositor
R_{merge}	0.11	Depositor
R_{sym}	(Not available)	Depositor
Refinement program	X-PLOR 3.843	Depositor
R, R_{free}	0.246 , 0.264	Depositor
Estimated twinning fraction	No twinning to report.	Xtrriage
Total number of atoms	5932	wwPDB-VP
Average B, all atoms (Å ²)	25.0	wwPDB-VP

5 Model quality [i](#)

5.1 Standard geometry [i](#)

Bond lengths and bond angles in the following residue types are not validated in this section: ADP, MG, K, AMB, PO4

The Z score for a bond length (or angle) is the number of standard deviations the observed value is removed from the expected value. A bond length (or angle) with $|Z| > 5$ is considered an outlier worth inspection. RMSZ is the root-mean-square of all Z scores of the bond lengths (or angles).

Mol	Chain	Bond lengths		Bond angles	
		RMSZ	# $ Z > 5$	RMSZ	# $ Z > 5$
1	A	0.44	1/2901 (0.0%)	0.75	7/3926 (0.2%)
1	B	0.40	0/2901	0.70	2/3926 (0.1%)
All	All	0.42	1/5802 (0.0%)	0.72	9/7852 (0.1%)

All (1) bond length outliers are listed below:

Mol	Chain	Res	Type	Atoms	Z	Observed(Å)	Ideal(Å)
1	A	221	GLU	CG-CD	5.92	1.60	1.51

All (9) bond angle outliers are listed below:

Mol	Chain	Res	Type	Atoms	Z	Observed(°)	Ideal(°)
1	A	344	ARG	NE-CZ-NH2	6.51	123.55	120.30
1	B	195	ALA	O-C-N	6.48	133.07	122.70
1	A	178	ARG	NE-CZ-NH2	6.44	123.52	120.30
1	A	250	ARG	NE-CZ-NH2	6.41	123.50	120.30
1	A	195	ALA	O-C-N	5.96	132.23	122.70
1	B	195	ALA	CA-C-N	-5.27	105.61	117.20
1	A	195	ALA	CA-C-N	-5.21	105.73	117.20
1	A	259	ASP	O-C-N	5.20	131.02	122.70
1	A	260	ALA	CB-CA-C	-5.08	102.48	110.10

There are no chirality outliers.

There are no planarity outliers.

5.2 Too-close contacts [i](#)

In the following table, the Non-H and H(model) columns list the number of non-hydrogen atoms and hydrogen atoms in the chain respectively. The H(added) column lists the number of hydrogen

atoms added and optimized by MolProbity. The Clashes column lists the number of clashes within the asymmetric unit, whereas Symm-Clashes lists symmetry-related clashes.

Mol	Chain	Non-H	H(model)	H(added)	Clashes	Symm-Clashes
1	A	2846	0	2852	136	0
1	B	2846	0	2852	152	0
2	A	9	0	9	1	0
3	A	10	0	0	5	0
3	B	5	0	0	4	0
4	A	3	0	0	0	0
5	B	27	0	12	14	0
6	B	2	0	0	0	0
7	A	96	0	0	4	0
7	B	88	0	0	9	0
All	All	5932	0	5725	283	0

The all-atom clashscore is defined as the number of clashes found per 1000 atoms (including hydrogen atoms). The all-atom clashscore for this structure is 25.

All (283) close contacts within the same asymmetric unit are listed below, sorted by their clash magnitude.

Atom-1	Atom-2	Interatomic distance (Å)	Clash overlap (Å)
1:B:56:ALA:CB	5:B:1397:ADP:H2'	1.73	1.18
1:B:56:ALA:HB2	5:B:1397:ADP:H2'	1.39	1.03
1:A:267:ILE:HD11	1:A:282:ALA:HA	1.46	0.97
1:B:267:ILE:HD11	1:B:282:ALA:HA	1.45	0.97
1:B:19:PHE:CE1	1:B:189:TYR:HB2	1.99	0.96
1:A:262:VAL:HG11	1:B:262:VAL:HG11	1.53	0.91
1:A:19:PHE:CE1	1:A:189:TYR:HB2	2.06	0.91
3:B:1400:PO4:O1	7:B:2088:HOH:O	1.89	0.89
1:B:216:LEU:HD23	7:B:2050:HOH:O	1.73	0.86
1:A:205:VAL:CG1	3:A:1401:PO4:O1	2.23	0.86
1:B:203:THR:HB	1:B:242:ILE:HB	1.59	0.85
1:A:203:THR:HB	1:A:242:ILE:HB	1.59	0.85
1:A:257:GLN:CG	1:A:258:GLY:H	1.91	0.84
1:B:19:PHE:CE1	1:B:189:TYR:CB	2.60	0.83
1:B:278:HIS:HD2	1:B:280:GLY:H	1.26	0.83
1:A:19:PHE:HD1	1:A:19:PHE:C	1.81	0.83
1:B:215:THR:HG21	7:B:2046:HOH:O	1.78	0.83
1:A:278:HIS:HD2	1:A:280:GLY:H	1.26	0.80
1:B:100:PHE:HD2	1:B:256:PRO:HG2	1.46	0.80
1:A:19:PHE:C	1:A:19:PHE:CD1	2.55	0.80
1:B:100:PHE:CD2	1:B:256:PRO:HG2	2.17	0.79

Continued on next page...

Continued from previous page...

Atom-1	Atom-2	Interatomic distance (Å)	Clash overlap (Å)
1:B:205:VAL:HG22	1:B:244:HIS:HB2	1.64	0.78
1:A:205:VAL:HG22	1:A:244:HIS:HB2	1.66	0.77
1:A:257:GLN:HG3	1:A:258:GLY:N	2.00	0.76
1:A:72:ILE:HG12	1:A:111:LEU:HD11	1.66	0.76
1:A:257:GLN:HG3	1:A:258:GLY:H	1.48	0.76
1:B:210:HIS:CE1	1:B:251:PHE:H	2.05	0.75
1:A:148:GLU:HB2	7:A:2031:HOH:O	1.87	0.74
1:B:56:ALA:CB	5:B:1397:ADP:C2'	2.63	0.73
1:B:19:PHE:HE1	1:B:189:TYR:CB	1.98	0.72
1:B:286:LYS:HD3	5:B:1397:ADP:HN61	1.55	0.71
1:A:31:PRO:HG3	1:A:256:PRO:HA	1.73	0.70
1:A:322:ALA:HB2	1:A:329:LEU:HD22	1.74	0.70
1:B:19:PHE:HE1	1:B:189:TYR:HB3	1.55	0.70
1:A:19:PHE:HD1	1:A:19:PHE:O	1.76	0.69
1:B:72:ILE:HG12	1:B:111:LEU:HD11	1.75	0.69
1:A:353:ASN:HD22	1:A:394:LEU:HD22	1.59	0.68
1:B:194:GLY:O	1:B:195:ALA:HB2	1.94	0.68
1:B:322:ALA:HB2	1:B:329:LEU:HD22	1.75	0.68
1:B:353:ASN:HD22	1:B:394:LEU:HD22	1.58	0.68
1:A:30:HIS:NE2	3:A:1399:PO4:O4	2.20	0.68
1:A:205:VAL:HG11	3:A:1401:PO4:O1	1.93	0.67
1:B:55:VAL:HA	1:B:72:ILE:HG22	1.76	0.67
1:A:342:THR:O	1:A:345:GLU:HB2	1.95	0.66
1:B:31:PRO:HG3	1:B:256:PRO:HA	1.76	0.66
1:A:55:VAL:HA	1:A:72:ILE:HG22	1.76	0.66
1:B:19:PHE:CD1	1:B:189:TYR:HB2	2.29	0.66
1:A:186:THR:CG2	1:A:203:THR:HG23	2.26	0.66
1:A:194:GLY:O	1:A:195:ALA:HB2	1.97	0.65
1:A:138:LEU:HD22	1:B:22:THR:H	1.62	0.65
1:B:186:THR:CG2	1:B:203:THR:HG23	2.27	0.65
1:A:93:TYR:CZ	1:A:256:PRO:HG3	2.32	0.64
1:A:267:ILE:HG23	1:A:278:HIS:CE1	2.32	0.64
1:A:100:PHE:CD2	1:A:256:PRO:HG2	2.32	0.64
1:B:99:GLY:HA3	1:B:255:GLY:HA3	1.79	0.64
1:B:267:ILE:HG23	1:B:278:HIS:CE1	2.32	0.64
1:A:335:THR:HG22	1:A:338:THR:H	1.62	0.64
1:B:262:VAL:HG13	7:B:2011:HOH:O	1.98	0.64
1:A:329:LEU:O	1:A:330:SER:HB3	1.98	0.63
1:B:71:GLU:HB3	5:B:1397:ADP:O3'	1.99	0.63
1:B:335:THR:HG22	1:B:338:THR:H	1.62	0.63
1:B:329:LEU:O	1:B:330:SER:HB3	1.99	0.63

Continued on next page...

Continued from previous page...

Atom-1	Atom-2	Interatomic distance (Å)	Clash overlap (Å)
1:A:19:PHE:CD1	1:A:19:PHE:O	2.52	0.62
1:B:286:LYS:HD3	5:B:1397:ADP:N6	2.14	0.62
1:A:257:GLN:CG	1:A:258:GLY:N	2.53	0.62
1:B:282:ALA:HB3	3:B:1400:PO4:O3	2.00	0.62
1:A:333:ILE:O	1:A:343:GLU:HG2	2.01	0.61
1:B:56:ALA:H	1:B:72:ILE:HG22	1.64	0.61
1:B:333:ILE:O	1:B:343:GLU:HG2	2.01	0.61
1:A:210:HIS:CE1	1:A:251:PHE:H	2.19	0.61
1:A:184:GLN:OE1	1:B:136:GLN:HB2	2.00	0.60
1:B:56:ALA:HB1	5:B:1397:ADP:H2'	1.79	0.60
1:A:19:PHE:CE1	1:A:189:TYR:CB	2.82	0.60
1:B:290:LYS:HG2	5:B:1397:ADP:C6	2.36	0.60
1:A:56:ALA:H	1:A:72:ILE:HG22	1.65	0.60
1:B:186:THR:HG23	1:B:203:THR:HG23	1.83	0.60
1:A:186:THR:HG23	1:A:203:THR:HG23	1.84	0.60
1:B:257:GLN:HB3	7:B:2060:HOH:O	2.02	0.60
1:B:383:ARG:O	1:B:389:GLU:HG3	2.02	0.59
1:A:194:GLY:HA3	7:A:2048:HOH:O	2.01	0.59
1:B:282:ALA:CB	3:B:1400:PO4:O3	2.50	0.59
1:B:223:LEU:O	1:B:227:VAL:HG22	2.03	0.58
1:A:100:PHE:HD2	1:A:256:PRO:HG2	1.67	0.58
1:B:228:ILE:HG21	1:B:243:TYR:HE2	1.68	0.58
1:A:19:PHE:CD1	1:A:189:TYR:HB2	2.39	0.58
1:A:383:ARG:O	1:A:389:GLU:HG3	2.04	0.58
1:B:114:GLN:HE21	1:B:114:GLN:N	2.02	0.58
1:A:111:LEU:HD13	1:A:112:GLU:N	2.18	0.58
1:A:223:LEU:O	1:A:227:VAL:HG22	2.05	0.57
1:A:228:ILE:HG21	1:A:243:TYR:HE2	1.69	0.57
1:A:345:GLU:O	1:A:349:VAL:HG23	2.05	0.57
1:B:56:ALA:HB3	5:B:1397:ADP:H3'	1.86	0.57
1:B:246:GLN:N	1:B:247:PRO:HD3	2.20	0.56
1:A:246:GLN:N	1:A:247:PRO:HD3	2.20	0.56
1:A:207:SER:HA	1:A:246:GLN:OE1	2.06	0.56
1:B:344:ARG:NE	1:B:347:LEU:HD23	2.21	0.55
1:A:114:GLN:HE21	1:A:114:GLN:N	2.03	0.55
1:B:207:SER:HA	1:B:246:GLN:OE1	2.07	0.55
1:A:344:ARG:NE	1:A:347:LEU:HD23	2.21	0.55
1:B:345:GLU:O	1:B:349:VAL:HG23	2.06	0.55
1:A:22:THR:OG1	1:A:186:THR:HB	2.07	0.54
1:A:375:THR:HG23	1:A:380:HIS:NE2	2.23	0.54
1:B:282:ALA:N	3:B:1400:PO4:O3	2.36	0.54

Continued on next page...

Continued from previous page...

Atom-1	Atom-2	Interatomic distance (Å)	Clash overlap (Å)
1:A:136:GLN:NE2	1:A:322:ALA:HA	2.22	0.54
1:B:257:GLN:O	1:B:260:ALA:N	2.39	0.54
1:B:217:GLU:CG	7:B:2048:HOH:O	2.56	0.53
1:B:375:THR:HG23	1:B:380:HIS:NE2	2.23	0.53
1:B:67:LEU:HD22	1:B:69:CYS:SG	2.49	0.53
1:B:52:ASN:HA	1:B:288:TYR:OH	2.09	0.53
1:A:393:LYS:H	1:A:393:LYS:HD2	1.73	0.53
1:B:393:LYS:H	1:B:393:LYS:HD2	1.73	0.53
1:B:165:MET:SD	1:B:206:ILE:HD11	2.49	0.53
1:A:67:LEU:HD22	1:A:69:CYS:SG	2.48	0.53
1:A:72:ILE:CG1	1:A:111:LEU:HD11	2.38	0.53
1:B:369:LYS:O	1:B:371:ILE:HD13	2.08	0.53
1:B:286:LYS:CD	5:B:1397:ADP:HN61	2.20	0.52
1:A:284:SER:HB2	7:A:2004:HOH:O	2.09	0.52
1:B:22:THR:OG1	1:B:186:THR:HB	2.09	0.52
1:B:52:ASN:HA	1:B:288:TYR:HH	1.75	0.52
1:B:219:MET:HE1	1:B:246:GLN:HE21	1.74	0.52
1:A:192:ASP:O	1:A:194:GLY:N	2.43	0.52
1:A:353:ASN:ND2	1:A:394:LEU:HA	2.25	0.51
1:A:369:LYS:O	1:A:371:ILE:HD13	2.10	0.51
1:B:275:TRP:HE1	1:B:314:ARG:HH21	1.58	0.51
1:A:186:THR:HG21	1:A:203:THR:HG23	1.93	0.51
1:B:43:LEU:HD13	1:B:55:VAL:HB	1.92	0.51
1:B:192:ASP:O	1:B:194:GLY:N	2.44	0.51
1:A:52:ASN:HA	1:A:288:TYR:OH	2.10	0.51
1:A:275:TRP:HE1	1:A:314:ARG:HH21	1.57	0.51
1:B:93:TYR:OH	1:B:256:PRO:HD3	2.10	0.51
1:A:371:ILE:HB	1:A:374:LYS:HE2	1.93	0.51
1:B:346:LEU:O	1:B:350:VAL:HG23	2.11	0.51
1:A:22:THR:H	1:B:138:LEU:HD22	1.76	0.51
1:B:257:GLN:O	1:B:259:ASP:N	2.43	0.51
1:B:302:VAL:O	1:B:306:LEU:HD13	2.10	0.51
1:B:72:ILE:HD11	1:B:80:TYR:OH	2.11	0.51
1:A:165:MET:SD	1:A:206:ILE:HD11	2.51	0.50
1:B:353:ASN:ND2	1:B:394:LEU:HA	2.26	0.50
1:B:393:LYS:HG2	7:B:2086:HOH:O	2.11	0.50
1:A:346:LEU:O	1:A:350:VAL:HG23	2.11	0.50
1:B:72:ILE:CG1	1:B:111:LEU:HD11	2.40	0.50
1:A:316:LEU:HB3	1:A:334:PHE:HB2	1.93	0.50
1:A:201:VAL:HG23	1:A:236:TYR:HB3	1.94	0.50
1:B:201:VAL:HG23	1:B:236:TYR:HB3	1.93	0.50

Continued on next page...

Continued from previous page...

Atom-1	Atom-2	Interatomic distance (Å)	Clash overlap (Å)
1:A:43:LEU:HD13	1:A:55:VAL:HB	1.93	0.50
1:B:186:THR:HG21	1:B:203:THR:HG23	1.94	0.50
1:B:97:ALA:O	1:B:253:ILE:HG23	2.11	0.50
1:A:202:HIS:ND1	1:A:203:THR:HG22	2.27	0.49
1:B:316:LEU:HB3	1:B:334:PHE:HB2	1.93	0.49
1:A:161:LEU:HD23	1:A:183:THR:HG23	1.95	0.49
1:A:72:ILE:HD11	1:A:80:TYR:OH	2.11	0.49
1:B:227:VAL:O	1:B:231:VAL:HG22	2.13	0.49
1:A:257:GLN:HG2	1:A:258:GLY:H	1.75	0.49
1:A:302:VAL:O	1:A:306:LEU:HD13	2.11	0.49
1:B:202:HIS:ND1	1:B:203:THR:HG22	2.27	0.49
1:B:286:LYS:CE	5:B:1397:ADP:HN61	2.26	0.49
1:A:227:VAL:O	1:A:231:VAL:HG22	2.12	0.49
1:B:161:LEU:HD23	1:B:183:THR:HG23	1.94	0.49
1:B:372:TYR:O	1:B:375:THR:HG22	2.12	0.49
1:A:97:ALA:O	1:A:253:ILE:HG23	2.13	0.49
1:A:144:THR:O	1:A:150:CYS:HA	2.13	0.48
1:B:136:GLN:NE2	1:B:322:ALA:HA	2.27	0.48
1:B:172:GLY:O	1:B:175:PRO:HD3	2.12	0.48
1:A:395:VAL:HG12	1:A:395:VAL:O	2.14	0.48
1:A:372:TYR:O	1:A:375:THR:HG22	2.13	0.48
1:A:257:GLN:O	1:A:258:GLY:C	2.52	0.48
1:B:214:ILE:HD12	1:B:219:MET:CG	2.44	0.48
1:A:311:LEU:HD22	1:A:341:LYS:HD2	1.95	0.48
1:B:371:ILE:HB	1:B:374:LYS:HE2	1.94	0.48
1:B:395:VAL:O	1:B:395:VAL:HG12	2.13	0.48
1:A:260:ALA:HB3	1:B:58:GLU:CD	2.34	0.47
1:A:49:GLN:HB2	1:A:76:ALA:HB1	1.97	0.47
1:B:111:LEU:HD13	1:B:112:GLU:N	2.30	0.47
1:A:219:MET:CE	1:A:246:GLN:HE21	2.28	0.47
1:B:34:ILE:O	1:B:38:ILE:HG13	2.15	0.47
1:B:219:MET:CE	1:B:246:GLN:HE21	2.27	0.47
1:B:257:GLN:O	1:B:258:GLY:C	2.53	0.47
1:A:214:ILE:HD12	1:A:219:MET:CG	2.45	0.47
1:B:210:HIS:HE1	1:B:251:PHE:H	1.59	0.47
1:A:152:PRO:HB2	1:A:155:ILE:HG22	1.97	0.47
1:B:152:PRO:HB2	1:B:155:ILE:HG22	1.96	0.47
1:B:161:LEU:O	1:B:165:MET:HG3	2.15	0.46
1:B:165:MET:HE2	1:B:177:LEU:HD11	1.97	0.46
1:B:344:ARG:HD2	1:B:344:ARG:HA	1.64	0.46
1:B:194:GLY:O	1:B:195:ALA:CB	2.61	0.46

Continued on next page...

Continued from previous page...

Atom-1	Atom-2	Interatomic distance (Å)	Clash overlap (Å)
1:A:219:MET:HE1	1:A:246:GLN:HE21	1.80	0.46
1:A:34:ILE:O	1:A:38:ILE:HG13	2.15	0.46
1:A:239:GLU:HB2	7:A:2060:HOH:O	2.15	0.46
1:A:176:TRP:CZ3	1:A:219:MET:HE3	2.51	0.46
1:B:144:THR:O	1:B:150:CYS:HA	2.15	0.46
1:B:311:LEU:HD22	1:B:341:LYS:HD2	1.96	0.46
1:B:49:GLN:HB2	1:B:76:ALA:HB1	1.97	0.46
1:A:165:MET:HE2	1:A:177:LEU:HD11	1.98	0.46
1:B:259:ASP:O	1:B:260:ALA:HB3	2.16	0.45
1:A:115:SER:H	1:A:116:PRO:HD2	1.81	0.45
1:A:161:LEU:O	1:A:165:MET:HG3	2.15	0.45
1:B:257:GLN:C	1:B:259:ASP:N	2.69	0.45
1:B:192:ASP:O	1:B:193:ASN:C	2.55	0.45
1:B:359:GLY:O	1:B:362:VAL:HG22	2.16	0.45
1:A:172:GLY:O	1:A:175:PRO:HD3	2.16	0.45
1:A:52:ASN:HA	1:A:288:TYR:HH	1.80	0.45
1:B:165:MET:CE	1:B:206:ILE:HD11	2.47	0.45
1:B:115:SER:H	1:B:116:PRO:HD2	1.82	0.45
1:B:80:TYR:HA	1:B:83:VAL:HG22	1.98	0.44
1:A:214:ILE:HD12	1:A:219:MET:HG2	1.99	0.44
1:B:331:ILE:HG23	1:B:347:LEU:HD11	1.99	0.44
1:A:192:ASP:O	1:A:193:ASN:C	2.55	0.44
1:A:219:MET:O	1:A:223:LEU:HD13	2.18	0.44
1:B:239:GLU:HG2	7:B:2055:HOH:O	2.16	0.44
1:B:262:VAL:CG1	1:B:263:THR:N	2.81	0.44
1:B:371:ILE:HD13	1:B:371:ILE:H	1.83	0.44
1:A:80:TYR:HA	1:A:83:VAL:HG22	1.98	0.44
1:A:93:TYR:CE2	1:A:256:PRO:HG3	2.52	0.44
1:A:344:ARG:HD2	1:A:344:ARG:HA	1.62	0.44
1:A:395:VAL:O	1:A:396:PHE:HB2	2.18	0.44
1:A:271:THR:HG22	1:A:381:PHE:HE2	1.83	0.43
1:B:184:GLN:HB2	1:B:205:VAL:HB	2.01	0.43
1:B:214:ILE:HD12	1:B:219:MET:HG2	2.00	0.43
1:B:342:THR:O	1:B:345:GLU:HB2	2.18	0.43
1:A:182:LYS:HD2	3:A:1399:PO4:O2	2.17	0.43
1:B:219:MET:O	1:B:223:LEU:HD13	2.18	0.43
1:A:248:SER:HB2	2:A:1398:AMB:HE3	1.99	0.43
1:A:194:GLY:O	1:A:195:ALA:CB	2.64	0.43
1:A:331:ILE:HG23	1:A:347:LEU:HD11	2.00	0.43
1:B:271:THR:HG22	1:B:381:PHE:HE2	1.84	0.43
1:A:362:VAL:HA	1:A:367:LEU:HD12	2.01	0.43

Continued on next page...

Continued from previous page...

Atom-1	Atom-2	Interatomic distance (Å)	Clash overlap (Å)
1:B:176:TRP:CG	1:B:214:ILE:HG13	2.54	0.43
1:A:257:GLN:O	1:A:259:ASP:N	2.51	0.43
1:A:371:ILE:HD13	1:A:371:ILE:H	1.84	0.43
1:B:101:ASP:HB3	1:B:104:THR:OG1	2.19	0.43
1:A:371:ILE:O	1:A:374:LYS:HG2	2.19	0.42
1:B:227:VAL:CG2	1:B:228:ILE:N	2.82	0.42
1:A:165:MET:CE	1:A:206:ILE:HD11	2.48	0.42
1:B:290:LYS:CG	5:B:1397:ADP:C6	3.02	0.42
1:A:253:ILE:O	1:A:253:ILE:HG22	2.19	0.42
1:B:100:PHE:HD2	1:B:256:PRO:CG	2.26	0.42
1:A:237:LEU:HD23	1:A:237:LEU:HA	1.86	0.42
1:A:212:GLU:CD	1:A:252:VAL:HG11	2.39	0.42
1:B:219:MET:HE1	1:B:246:GLN:NE2	2.34	0.42
1:B:362:VAL:HA	1:B:367:LEU:HD12	2.00	0.42
1:B:395:VAL:O	1:B:396:PHE:HB2	2.20	0.42
1:A:267:ILE:HD13	1:A:267:ILE:HA	1.73	0.42
1:B:252:VAL:HG12	1:B:253:ILE:HD13	2.01	0.42
1:A:178:ARG:HB3	1:A:179:PRO:HD2	2.01	0.42
1:A:227:VAL:CG2	1:A:228:ILE:N	2.82	0.42
1:A:209:GLN:HA	1:A:251:PHE:O	2.20	0.42
1:A:262:VAL:CG1	1:A:263:THR:N	2.82	0.42
1:B:262:VAL:HG12	1:B:263:THR:N	2.34	0.42
1:B:267:ILE:HA	1:B:267:ILE:HD13	1.72	0.42
1:A:318:GLN:NE2	1:B:20:MET:O	2.53	0.42
1:B:88:ILE:HG22	1:B:93:TYR:HB2	2.02	0.41
1:B:135:ASP:O	1:B:136:GLN:C	2.59	0.41
1:B:311:LEU:HB3	1:B:346:LEU:HD21	2.02	0.41
1:A:341:LYS:O	1:A:342:THR:HG22	2.20	0.41
1:B:371:ILE:O	1:B:374:LYS:HG2	2.19	0.41
1:A:101:ASP:HB3	1:A:104:THR:OG1	2.20	0.41
1:A:375:THR:HG23	1:A:380:HIS:CD2	2.56	0.41
1:B:215:THR:HG23	1:B:218:ALA:H	1.86	0.41
1:B:346:LEU:HD23	1:B:346:LEU:HA	1.90	0.41
1:B:72:ILE:CD1	1:B:111:LEU:HD11	2.51	0.41
1:A:176:TRP:CG	1:A:214:ILE:HG13	2.56	0.41
1:A:215:THR:HG23	1:A:218:ALA:H	1.85	0.41
1:A:355:ASP:OD2	1:A:360:VAL:HG21	2.21	0.41
1:B:161:LEU:HD12	1:B:161:LEU:HA	1.94	0.41
1:B:176:TRP:CZ3	1:B:219:MET:HE3	2.56	0.41
1:A:176:TRP:CZ3	1:A:177:LEU:HD13	2.55	0.41
1:A:88:ILE:HG22	1:A:93:TYR:HB2	2.03	0.41

Continued on next page...

Continued from previous page...

Atom-1	Atom-2	Interatomic distance (Å)	Clash overlap (Å)
1:A:205:VAL:HG12	3:A:1401:PO4:O1	2.13	0.41
1:A:327:GLU:HA	1:A:357:ARG:HG2	2.03	0.41
1:B:217:GLU:CD	7:B:2048:HOH:O	2.59	0.41
1:A:178:ARG:HB2	1:A:209:GLN:HB3	2.02	0.41
1:A:311:LEU:HB3	1:A:346:LEU:HD21	2.02	0.41
1:B:327:GLU:HA	1:B:357:ARG:HG2	2.02	0.41
1:B:161:LEU:HD23	1:B:183:THR:CG2	2.51	0.40
1:A:359:GLY:O	1:A:362:VAL:HG22	2.20	0.40
1:B:56:ALA:HB1	5:B:1397:ADP:C8	2.57	0.40
1:B:114:GLN:HE21	1:B:114:GLN:H	1.70	0.40
1:A:346:LEU:HA	1:A:346:LEU:HD23	1.88	0.40
1:B:56:ALA:HB3	5:B:1397:ADP:H2'	1.86	0.40
1:B:375:THR:HG23	1:B:380:HIS:CD2	2.56	0.40
1:B:215:THR:O	1:B:219:MET:HG3	2.22	0.40
1:B:311:LEU:HD21	1:B:396:PHE:CE2	2.57	0.40
1:B:343:GLU:OE2	1:B:346:LEU:HD12	2.21	0.40

There are no symmetry-related clashes.

5.3 Torsion angles [i](#)

5.3.1 Protein backbone [i](#)

In the following table, the Percentiles column shows the percent Ramachandran outliers of the chain as a percentile score with respect to all X-ray entries followed by that with respect to entries of similar resolution.

The Analysed column shows the number of residues for which the backbone conformation was analysed, and the total number of residues.

Mol	Chain	Analysed	Favoured	Allowed	Outliers	Percentiles	
1	A	364/396 (92%)	314 (86%)	36 (10%)	14 (4%)	3	22
1	B	364/396 (92%)	315 (86%)	33 (9%)	16 (4%)	2	19
All	All	728/792 (92%)	629 (86%)	69 (10%)	30 (4%)	3	21

All (30) Ramachandran outliers are listed below:

Mol	Chain	Res	Type
1	A	18	ALA
1	A	193	ASN

Continued on next page...

Continued from previous page...

Mol	Chain	Res	Type
1	A	196	VAL
1	B	18	ALA
1	B	193	ASN
1	B	196	VAL
1	A	258	GLY
1	A	259	ASP
1	A	260	ALA
1	A	344	ARG
1	B	135	ASP
1	B	258	GLY
1	B	344	ARG
1	A	63	THR
1	A	115	SER
1	A	135	ASP
1	A	342	THR
1	B	63	THR
1	B	115	SER
1	B	256	PRO
1	B	342	THR
1	A	131	VAL
1	A	330	SER
1	B	131	VAL
1	B	195	ALA
1	B	330	SER
1	B	253	ILE
1	B	252	VAL
1	A	194	GLY
1	B	194	GLY

5.3.2 Protein sidechains [i](#)

In the following table, the Percentiles column shows the percent sidechain outliers of the chain as a percentile score with respect to all X-ray entries followed by that with respect to entries of similar resolution.

The Analysed column shows the number of residues for which the sidechain conformation was analysed, and the total number of residues.

Mol	Chain	Analysed	Rotameric	Outliers	Percentiles	
1	A	307/332 (92%)	277 (90%)	30 (10%)	8	31
1	B	307/332 (92%)	276 (90%)	31 (10%)	7	29
All	All	614/664 (92%)	553 (90%)	61 (10%)	8	30

All (61) residues with a non-rotameric sidechain are listed below:

Mol	Chain	Res	Type
1	A	19	PHE
1	A	63	THR
1	A	67	LEU
1	A	68	LEU
1	A	100	PHE
1	A	114	GLN
1	A	139	MET
1	A	157	LEU
1	A	164	ARG
1	A	186	THR
1	A	191	GLN
1	A	203	THR
1	A	206	ILE
1	A	214	ILE
1	A	227	VAL
1	A	239	GLU
1	A	251	PHE
1	A	265	ARG
1	A	267	ILE
1	A	275	TRP
1	A	289	THR
1	A	315	VAL
1	A	331	ILE
1	A	342	THR
1	A	343	GLU
1	A	344	ARG
1	A	369	LYS
1	A	371	ILE
1	A	375	THR
1	A	393	LYS
1	B	19	PHE
1	B	63	THR
1	B	67	LEU
1	B	68	LEU
1	B	100	PHE
1	B	114	GLN
1	B	139	MET
1	B	157	LEU
1	B	164	ARG
1	B	186	THR
1	B	191	GLN
1	B	203	THR

Continued on next page...

Continued from previous page...

Mol	Chain	Res	Type
1	B	206	ILE
1	B	214	ILE
1	B	227	VAL
1	B	239	GLU
1	B	251	PHE
1	B	257	GLN
1	B	265	ARG
1	B	267	ILE
1	B	275	TRP
1	B	289	THR
1	B	315	VAL
1	B	331	ILE
1	B	342	THR
1	B	343	GLU
1	B	344	ARG
1	B	369	LYS
1	B	371	ILE
1	B	375	THR
1	B	393	LYS

Sometimes sidechains can be flipped to improve hydrogen bonding and reduce clashes. All (26) such sidechains are listed below:

Mol	Chain	Res	Type
1	A	52	ASN
1	A	113	GLN
1	A	114	GLN
1	A	136	GLN
1	A	159	HIS
1	A	162	ASN
1	A	191	GLN
1	A	209	GLN
1	A	278	HIS
1	A	318	GLN
1	A	353	ASN
1	A	380	HIS
1	B	52	ASN
1	B	113	GLN
1	B	114	GLN
1	B	136	GLN
1	B	159	HIS
1	B	162	ASN
1	B	184	GLN

Continued on next page...

Continued from previous page...

Mol	Chain	Res	Type
1	B	191	GLN
1	B	209	GLN
1	B	210	HIS
1	B	278	HIS
1	B	318	GLN
1	B	353	ASN
1	B	380	HIS

5.3.3 RNA [i](#)

There are no RNA molecules in this entry.

5.4 Non-standard residues in protein, DNA, RNA chains [i](#)

There are no non-standard protein/DNA/RNA residues in this entry.

5.5 Carbohydrates [i](#)

There are no monosaccharides in this entry.

5.6 Ligand geometry [i](#)

Of 10 ligands modelled in this entry, 5 are monoatomic - leaving 5 for Mogul analysis.

In the following table, the Counts columns list the number of bonds (or angles) for which Mogul statistics could be retrieved, the number of bonds (or angles) that are observed in the model and the number of bonds (or angles) that are defined in the Chemical Component Dictionary. The Link column lists molecule types, if any, to which the group is linked. The Z score for a bond length (or angle) is the number of standard deviations the observed value is removed from the expected value. A bond length (or angle) with $|Z| > 2$ is considered an outlier worth inspection. RMSZ is the root-mean-square of all Z scores of the bond lengths (or angles).

Mol	Type	Chain	Res	Link	Bond lengths			Bond angles		
					Counts	RMSZ	# Z > 2	Counts	RMSZ	# Z > 2
3	PO4	A	1399	4	4,4,4	1.34	0	6,6,6	0.99	0
2	AMB	A	1398	4	7,8,8	2.17	2 (28%)	4,9,9	3.02	2 (50%)
3	PO4	B	1400	6	4,4,4	3.70	1 (25%)	6,6,6	1.28	1 (16%)
3	PO4	A	1401	4	4,4,4	1.39	1 (25%)	6,6,6	1.15	0
5	ADP	B	1397	-	24,29,29	2.76	12 (50%)	29,45,45	1.80	5 (17%)

In the following table, the Chirals column lists the number of chiral outliers, the number of chiral centers analysed, the number of these observed in the model and the number defined in the Chemical Component Dictionary. Similar counts are reported in the Torsion and Rings columns. '-' means no outliers of that kind were identified.

Mol	Type	Chain	Res	Link	Chirals	Torsions	Rings
5	ADP	B	1397	-	-	4/12/32/32	0/3/3/3
2	AMB	A	1398	4	-	3/7/8/8	-

All (16) bond length outliers are listed below:

Mol	Chain	Res	Type	Atoms	Z	Observed(Å)	Ideal(Å)
5	B	1397	ADP	O4'-C1'	7.60	1.51	1.41
3	B	1400	PO4	P-O1	-7.36	1.33	1.50
5	B	1397	ADP	C2-N3	5.37	1.40	1.32
2	A	1398	AMB	CG-CB	4.00	1.51	1.30
5	B	1397	ADP	PA-O2A	3.98	1.74	1.55
5	B	1397	ADP	O2'-C2'	3.73	1.51	1.43
5	B	1397	ADP	O3'-C3'	3.15	1.50	1.43
5	B	1397	ADP	C2'-C3'	3.14	1.61	1.53
5	B	1397	ADP	C2-N1	2.86	1.39	1.33
5	B	1397	ADP	PA-O5'	2.52	1.69	1.59
5	B	1397	ADP	C2'-C1'	2.43	1.57	1.53
3	A	1401	PO4	P-O1	2.40	1.56	1.50
5	B	1397	ADP	PB-O1B	2.33	1.58	1.50
5	B	1397	ADP	C8-N7	2.31	1.38	1.34
2	A	1398	AMB	OXT-C	2.26	1.38	1.30
5	B	1397	ADP	O4'-C4'	2.17	1.49	1.45

All (8) bond angle outliers are listed below:

Mol	Chain	Res	Type	Atoms	Z	Observed(°)	Ideal(°)
5	B	1397	ADP	PA-O3A-PB	-5.77	113.04	132.83
2	A	1398	AMB	OXT-C-O	-5.53	111.54	124.09
5	B	1397	ADP	C5-C6-N6	3.24	125.27	120.35
5	B	1397	ADP	O3'-C3'-C2'	3.01	121.57	111.82
5	B	1397	ADP	C2'-C3'-C4'	2.88	108.24	102.64
2	A	1398	AMB	OD-CG-CB	2.29	136.30	125.50
5	B	1397	ADP	C3'-C2'-C1'	2.02	104.02	100.98
3	B	1400	PO4	O2-P-O1	-2.01	103.55	110.89

There are no chirality outliers.

All (7) torsion outliers are listed below:

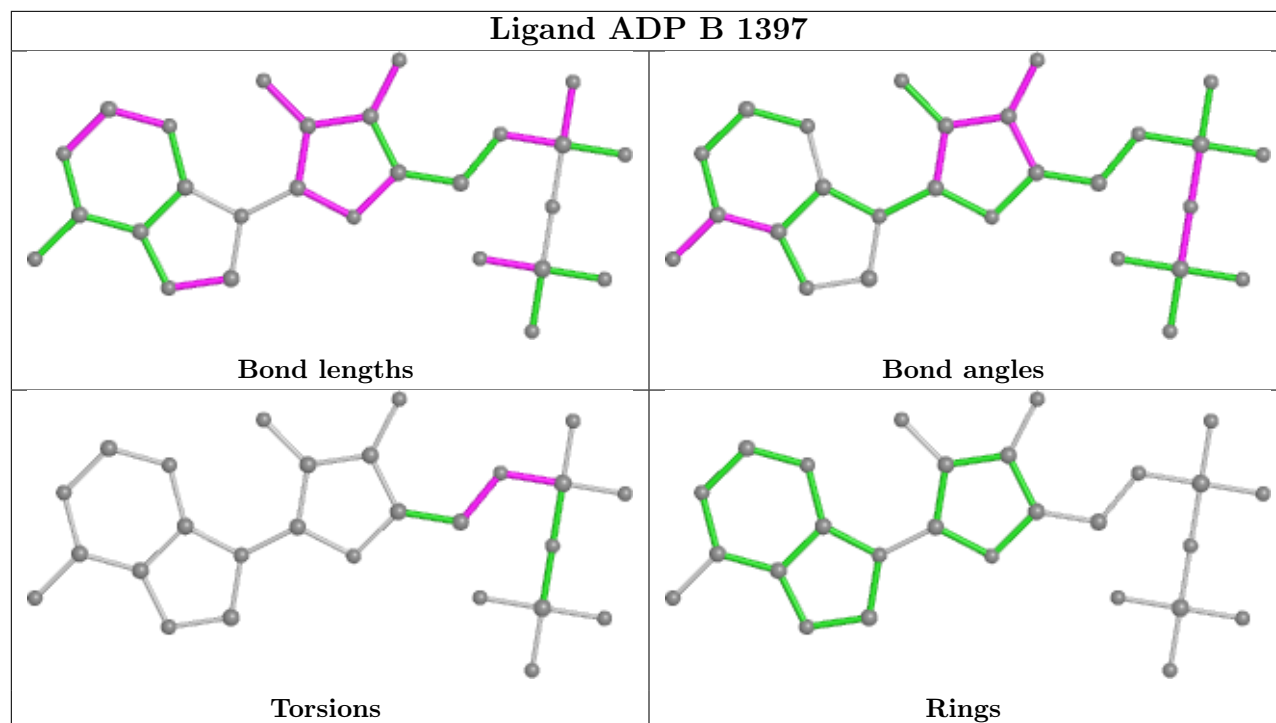
Mol	Chain	Res	Type	Atoms
2	A	1398	AMB	OXT-C-CA-CB
5	B	1397	ADP	C5'-O5'-PA-O2A
5	B	1397	ADP	C5'-O5'-PA-O3A
5	B	1397	ADP	C4'-C5'-O5'-PA
5	B	1397	ADP	C5'-O5'-PA-O1A
2	A	1398	AMB	O-C-CA-CB
2	A	1398	AMB	OXT-C-CA-N

There are no ring outliers.

5 monomers are involved in 24 short contacts:

Mol	Chain	Res	Type	Clashes	Symm-Clashes
3	A	1399	PO4	2	0
2	A	1398	AMB	1	0
3	B	1400	PO4	4	0
3	A	1401	PO4	3	0
5	B	1397	ADP	14	0

The following is a two-dimensional graphical depiction of Mogul quality analysis of bond lengths, bond angles, torsion angles, and ring geometry for all instances of the Ligand of Interest. In addition, ligands with molecular weight > 250 and outliers as shown on the validation Tables will also be included. For torsion angles, if less than 5% of the Mogul distribution of torsion angles is within 10 degrees of the torsion angle in question, then that torsion angle is considered an outlier. Any bond that is central to one or more torsion angles identified as an outlier by Mogul will be highlighted in the graph. For rings, the root-mean-square deviation (RMSD) between the ring in question and similar rings identified by Mogul is calculated over all ring torsion angles. If the average RMSD is greater than 60 degrees and the minimal RMSD between the ring in question and any Mogul-identified rings is also greater than 60 degrees, then that ring is considered an outlier. The outliers are highlighted in purple. The color gray indicates Mogul did not find sufficient equivalents in the CSD to analyse the geometry.



5.7 Other polymers [i](#)

There are no such residues in this entry.

5.8 Polymer linkage issues [i](#)

There are no chain breaks in this entry.

6 Fit of model and data

6.1 Protein, DNA and RNA chains

EDS was not executed - this section is therefore empty.

6.2 Non-standard residues in protein, DNA, RNA chains

EDS was not executed - this section is therefore empty.

6.3 Carbohydrates

EDS was not executed - this section is therefore empty.

6.4 Ligands

EDS was not executed - this section is therefore empty.

6.5 Other polymers

EDS was not executed - this section is therefore empty.