



Full wwPDB X-ray Structure Validation Report ⓘ

Aug 22, 2020 – 10:23 AM BST

PDB ID : 4O5Q
Title : Crystal Structure of the Alkylhydroperoxide Reductase AhpF from Escherichia coli
Authors : Dip, P.V.; Kamariah, N.; Manimekalai, M.S.S.; Balakrishna, A.M.; Gruber, G.
Deposited on : 2013-12-20
Resolution : 2.00 Å(reported)

This is a Full wwPDB X-ray Structure Validation Report for a publicly released PDB entry.

We welcome your comments at validation@mail.wwpdb.org

A user guide is available at

<https://www.wwpdb.org/validation/2017/XrayValidationReportHelp>

with specific help available everywhere you see the ⓘ symbol.

The following versions of software and data (see [references ⓘ](#)) were used in the production of this report:

MolProbity : 4.02b-467
Mogul : 1.8.5 (274361), CSD as541be (2020)
Xtriage (Phenix) : 1.13
EDS : 2.13.1
buster-report : 1.1.7 (2018)
Percentile statistics : 20191225.v01 (using entries in the PDB archive December 25th 2019)
Refmac : 5.8.0158
CCP4 : 7.0.044 (Gargrove)
Ideal geometry (proteins) : Engh & Huber (2001)
Ideal geometry (DNA, RNA) : Parkinson et al. (1996)
Validation Pipeline (wwPDB-VP) : 2.13.1

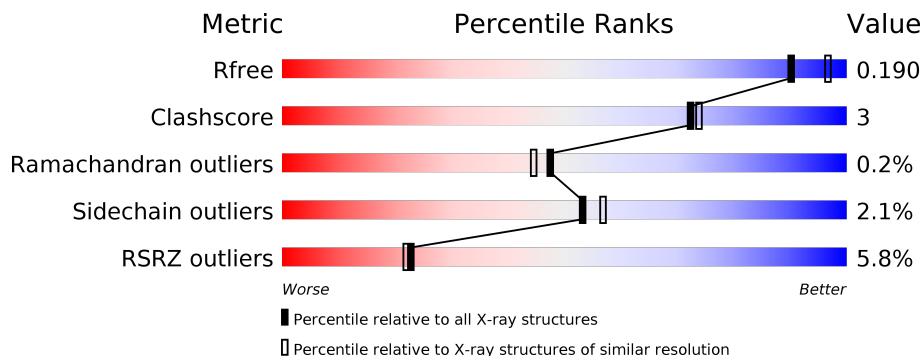
1 Overall quality at a glance

The following experimental techniques were used to determine the structure:

X-RAY DIFFRACTION

The reported resolution of this entry is 2.00 Å.

Percentile scores (ranging between 0-100) for global validation metrics of the entry are shown in the following graphic. The table shows the number of entries on which the scores are based.



Metric	Whole archive (#Entries)	Similar resolution (#Entries, resolution range(Å))
R_{free}	130704	8085 (2.00-2.00)
Clashscore	141614	9178 (2.00-2.00)
Ramachandran outliers	138981	9054 (2.00-2.00)
Sidechain outliers	138945	9053 (2.00-2.00)
RSRZ outliers	127900	7900 (2.00-2.00)

The table below summarises the geometric issues observed across the polymeric chains and their fit to the electron density. The red, orange, yellow and green segments on the lower bar indicate the fraction of residues that contain outliers for ≥ 3 , 2, 1 and 0 types of geometric quality criteria respectively. A grey segment represents the fraction of residues that are not modelled. The numeric value for each fraction is indicated below the corresponding segment, with a dot representing fractions $\leq 5\%$. The upper red bar (where present) indicates the fraction of residues that have poor fit to the electron density. The numeric value is given above the bar.

Mol	Chain	Length	Quality of chain
1	A	521	

2 Entry composition [i](#)

There are 9 unique types of molecules in this entry. The entry contains 8984 atoms, of which 4247 are hydrogens and 0 are deuteriums.

In the tables below, the ZeroOcc column contains the number of atoms modelled with zero occupancy, the AltConf column contains the number of residues with at least one atom in alternate conformation and the Trace column contains the number of residues modelled with at most 2 atoms.

- Molecule 1 is a protein called Alkyl hydroperoxide reductase subunit F.

Mol	Chain	Residues	Atoms					ZeroOcc	AltConf	Trace	
			Total	C	H	N	O				S
1	A	521	8117	2537	4095	687	781	17	0	12	0

- Molecule 2 is FLAVIN-ADENINE DINUCLEOTIDE (three-letter code: FAD) (formula: $C_{27}H_{33}N_9O_{15}P_2$).



Mol	Chain	Residues	Atoms					ZeroOcc	AltConf
			Total	C	N	O	P		
2	A	1	53	27	9	15	2	0	0

- Molecule 3 is SULFATE ION (three-letter code: SO4) (formula: O_4S).



Mol	Chain	Residues	Atoms			ZeroOcc	AltConf
3	A	1	Total	O	S	0	0
			5	4	1		
3	A	1	Total	O	S	0	0
			5	4	1		
3	A	1	Total	O	S	0	0
			5	4	1		
3	A	1	Total	O	S	0	0
			5	4	1		
3	A	1	Total	O	S	0	0
			5	4	1		
3	A	1	Total	O	S	0	0
			5	4	1		

- Molecule 4 is TRIETHYLENE GLYCOL (three-letter code: PGE) (formula: C₆H₁₄O₄).



Mol	Chain	Residues	Atoms				ZeroOcc	AltConf
			Total	C	H	O		
4	A	1	24	6	14	4	0	0
4	A	1	24	6	14	4	0	0
4	A	1	24	6	14	4	0	0
4	A	1	24	6	14	4	0	0
4	A	1	24	6	14	4	0	0
4	A	1	24	6	14	4	0	0

- Molecule 5 is GLYCEROL (three-letter code: GOL) (formula: C₃H₈O₃).

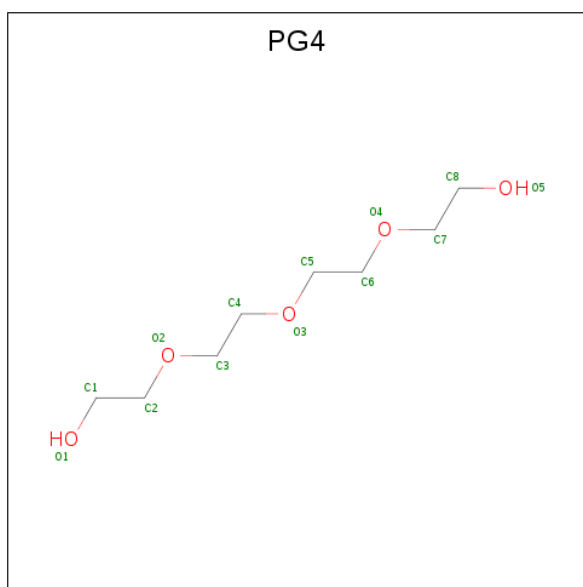


Mol	Chain	Residues	Atoms				ZeroOcc	AltConf
5	A	1	Total	C	H	O	0	0
			14	3	8	3		
5	A	1	Total	C	H	O	0	0
			14	3	8	3		
5	A	1	Total	C	H	O	0	0
			14	3	8	3		
5	A	1	Total	C	H	O	0	0
			14	3	8	3		
5	A	1	Total	C	H	O	0	0
			14	3	8	3		
5	A	1	Total	C	H	O	0	0
			14	3	8	3		

- Molecule 6 is CADMIUM ION (three-letter code: CD) (formula: Cd).

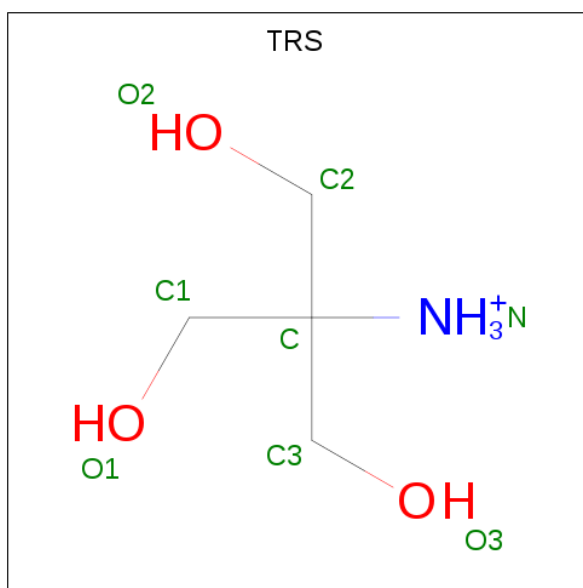
Mol	Chain	Residues	Atoms		ZeroOcc	AltConf
6	A	1	Total	Cd	0	0
			1	1		

- Molecule 7 is TETRAETHYLENE GLYCOL (three-letter code: PG4) (formula: C₈H₁₈O₅).



Mol	Chain	Residues	Atoms				ZeroOcc	AltConf
7	A	1	Total	C	O			
			8	5	3	0	0	

- Molecule 8 is 2-AMINO-2-HYDROXYMETHYL-PROPANE-1,3-DIOL (three-letter code: TRS) (formula: $C_4H_{12}NO_3$).



Mol	Chain	Residues	Atoms					ZeroOcc	AltConf
8	A	1	Total	C	H	N	O		
			20	4	12	1	3	0	0

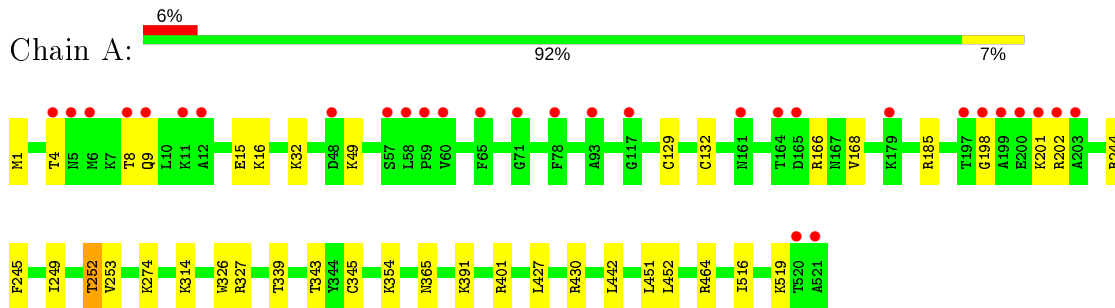
- Molecule 9 is water.

Mol	Chain	Residues	Atoms		ZeroOcc	AltConf
9	A	503	Total 503	O 503	0	0

3 Residue-property plots [i](#)

These plots are drawn for all protein, RNA, DNA and oligosaccharide chains in the entry. The first graphic for a chain summarises the proportions of the various outlier classes displayed in the second graphic. The second graphic shows the sequence view annotated by issues in geometry and electron density. Residues are color-coded according to the number of geometric quality criteria for which they contain at least one outlier: green = 0, yellow = 1, orange = 2 and red = 3 or more. A red dot above a residue indicates a poor fit to the electron density ($RSRZ > 2$). Stretches of 2 or more consecutive residues without any outlier are shown as a green connector. Residues present in the sample, but not in the model, are shown in grey.

- Molecule 1: Alkyl hydroperoxide reductase subunit F



4 Data and refinement statistics

Property	Value	Source
Space group	C 1 2 1	Depositor
Cell constants a, b, c, α , β , γ	106.49 Å 58.70 Å 123.99 Å 90.00° 114.58° 90.00°	Depositor
Resolution (Å)	26.62 – 2.00 27.21 – 1.99	Depositor EDS
% Data completeness (in resolution range)	99.5 (26.62-2.00) 99.5 (27.21-1.99)	Depositor EDS
R_{merge}	0.07	Depositor
R_{sym}	(Not available)	Depositor
$\langle I/\sigma(I) \rangle$ ¹	2.13 (at 1.99 Å)	Xtrriage
Refinement program	REFMAC 5.7.0029, PHENIX 1.8.2_1309	Depositor
R, R_{free}	0.141 , 0.188 0.148 , 0.190	Depositor DCC
R_{free} test set	2400 reflections (5.06%)	wwPDB-VP
Wilson B-factor (Å ²)	30.7	Xtrriage
Anisotropy	0.194	Xtrriage
Bulk solvent k_{sol} (e/Å ³), B_{sol} (Å ²)	0.42 , 73.2	EDS
L-test for twinning ²	$\langle L \rangle = 0.50$, $\langle L^2 \rangle = 0.33$	Xtrriage
Estimated twinning fraction	0.011 for h,-k,-h-l	Xtrriage
F_o, F_c correlation	0.97	EDS
Total number of atoms	8984	wwPDB-VP
Average B, all atoms (Å ²)	44.0	wwPDB-VP

Xtrriage's analysis on translational NCS is as follows: *The largest off-origin peak in the Patterson function is 5.73% of the height of the origin peak. No significant pseudotranslation is detected.*

¹Intensities estimated from amplitudes.

²Theoretical values of $\langle |L| \rangle$, $\langle L^2 \rangle$ for acentric reflections are 0.5, 0.333 respectively for untwinned datasets, and 0.375, 0.2 for perfectly twinned datasets.

5 Model quality [i](#)

5.1 Standard geometry [i](#)

Bond lengths and bond angles in the following residue types are not validated in this section: GOL, PGE, CD, PG4, SO4, TRS, FAD

The Z score for a bond length (or angle) is the number of standard deviations the observed value is removed from the expected value. A bond length (or angle) with $|Z| > 5$ is considered an outlier worth inspection. RMSZ is the root-mean-square of all Z scores of the bond lengths (or angles).

Mol	Chain	Bond lengths		Bond angles	
		RMSZ	# Z >5	RMSZ	# Z >5
1	A	0.58	0/4114	0.67	3/5561 (0.1%)

There are no bond length outliers.

All (3) bond angle outliers are listed below:

Mol	Chain	Res	Type	Atoms	Z	Observed(°)	Ideal(°)
1	A	464	ARG	NE-CZ-NH2	-5.33	117.63	120.30
1	A	427	LEU	CA-CB-CG	5.21	127.28	115.30
1	A	464	ARG	NE-CZ-NH1	5.11	122.85	120.30

There are no chirality outliers.

There are no planarity outliers.

5.2 Too-close contacts [i](#)

In the following table, the Non-H and H(model) columns list the number of non-hydrogen atoms and hydrogen atoms in the chain respectively. The H(added) column lists the number of hydrogen atoms added and optimized by MolProbity. The Clashes column lists the number of clashes within the asymmetric unit, whereas Symm-Clashes lists symmetry related clashes.

Mol	Chain	Non-H	H(model)	H(added)	Clashes	Symm-Clashes
1	A	4022	4095	4083	26	0
2	A	53	0	31	1	0
3	A	40	0	0	2	0
4	A	60	84	84	1	0
5	A	42	56	56	4	0
6	A	1	0	0	0	0
7	A	8	0	9	3	0
8	A	8	12	12	0	0

Continued on next page...

Continued from previous page...

Mol	Chain	Non-H	H(model)	H(added)	Clashes	Symm-Clashes
9	A	503	0	0	11	0
All	All	4737	4247	4275	29	0

The all-atom clashscore is defined as the number of clashes found per 1000 atoms (including hydrogen atoms). The all-atom clashscore for this structure is 3.

All (29) close contacts within the same asymmetric unit are listed below, sorted by their clash magnitude.

Atom-1	Atom-2	Interatomic distance (Å)	Clash overlap (Å)
1:A:345:CYS:SG	9:A:779:HOH:O	2.38	0.82
1:A:129:CYS:HG	1:A:132:CYS:HG	1.44	0.65
1:A:244:ARG:NE	9:A:1057:HOH:O	2.21	0.65
3:A:605:SO4:S	9:A:865:HOH:O	2.53	0.65
1:A:401:ARG:NH1	9:A:1143:HOH:O	2.30	0.65
1:A:166:ARG:NH2	9:A:877:HOH:O	2.32	0.62
1:A:274:LYS:HE3	7:A:617:PG4:H72	1.83	0.60
7:A:617:PG4:H52	9:A:813:HOH:O	2.06	0.56
1:A:185:ARG:NH1	9:A:1114:HOH:O	2.41	0.53
1:A:430:ARG:NH1	9:A:950:HOH:O	2.31	0.53
1:A:249:ILE:HA	1:A:252:THR:HG23	1.91	0.52
1:A:391:LYS:HG2	5:A:623:GOL:H31	1.91	0.51
1:A:339:THR:HA	5:A:619:GOL:H11	1.96	0.48
1:A:1:MET:SD	1:A:1:MET:N	2.87	0.46
1:A:516:ILE:HA	1:A:519[B]:LYS:HD2	1.97	0.45
1:A:4:THR:O	1:A:8:THR:HG23	2.17	0.44
1:A:339:THR:HG22	5:A:619:GOL:H2	2.00	0.43
1:A:32:LYS:NZ	9:A:1094:HOH:O	2.38	0.43
1:A:365:ASN:N	3:A:603:SO4:O4	2.52	0.42
1:A:252:THR:HB	5:A:619:GOL:O2	2.19	0.42
1:A:327:ARG:HD2	1:A:452:LEU:HD21	2.01	0.42
1:A:326:TRP:CD1	1:A:326:TRP:N	2.88	0.41
1:A:9[B]:GLN:NE2	9:A:933:HOH:O	2.53	0.41
2:A:601:FAD:H1'1	2:A:601:FAD:H9	1.82	0.41
1:A:354[B]:LYS:NZ	9:A:1130:HOH:O	2.48	0.41
1:A:519[B]:LYS:HE3	4:A:612:PGE:O3	2.21	0.41
1:A:245:PHE:HB3	7:A:617:PG4:H61	2.02	0.40
1:A:326:TRP:CD2	1:A:451:LEU:HD21	2.57	0.40
1:A:198:GLY:HA2	1:A:201:LYS:HG3	2.04	0.40

There are no symmetry-related clashes.

5.3 Torsion angles [i](#)

5.3.1 Protein backbone [i](#)

In the following table, the Percentiles column shows the percent Ramachandran outliers of the chain as a percentile score with respect to all X-ray entries followed by that with respect to entries of similar resolution.

The Analysed column shows the number of residues for which the backbone conformation was analysed, and the total number of residues.

Mol	Chain	Analysed	Favoured	Allowed	Outliers	Percentiles
1	A	531/521 (102%)	519 (98%)	11 (2%)	1 (0%)	47 44

All (1) Ramachandran outliers are listed below:

Mol	Chain	Res	Type
1	A	253	VAL

5.3.2 Protein sidechains [i](#)

In the following table, the Percentiles column shows the percent sidechain outliers of the chain as a percentile score with respect to all X-ray entries followed by that with respect to entries of similar resolution.

The Analysed column shows the number of residues for which the sidechain conformation was analysed, and the total number of residues.

Mol	Chain	Analysed	Rotameric	Outliers	Percentiles
1	A	434/422 (103%)	425 (98%)	9 (2%)	53 57

All (9) residues with a non-rotameric sidechain are listed below:

Mol	Chain	Res	Type
1	A	15	GLU
1	A	16	LYS
1	A	49	LYS
1	A	168	VAL
1	A	202	ARG
1	A	252	THR
1	A	314	LYS
1	A	343	THR
1	A	442	LEU

Some sidechains can be flipped to improve hydrogen bonding and reduce clashes. There are no such sidechains identified.

5.3.3 RNA [i](#)

There are no RNA molecules in this entry.

5.4 Non-standard residues in protein, DNA, RNA chains [i](#)

There are no non-standard protein/DNA/RNA residues in this entry.

5.5 Carbohydrates [i](#)

There are no monosaccharides in this entry.

5.6 Ligand geometry [i](#)

Of 25 ligands modelled in this entry, 1 is monoatomic - leaving 24 for Mogul analysis.

In the following table, the Counts columns list the number of bonds (or angles) for which Mogul statistics could be retrieved, the number of bonds (or angles) that are observed in the model and the number of bonds (or angles) that are defined in the Chemical Component Dictionary. The Link column lists molecule types, if any, to which the group is linked. The Z score for a bond length (or angle) is the number of standard deviations the observed value is removed from the expected value. A bond length (or angle) with $|Z| > 2$ is considered an outlier worth inspection. RMSZ is the root-mean-square of all Z scores of the bond lengths (or angles).

Mol	Type	Chain	Res	Link	Bond lengths			Bond angles		
					Counts	RMSZ	$\# Z > 2$	Counts	RMSZ	$\# Z > 2$
5	GOL	A	623	-	5,5,5	0.29	0	5,5,5	0.32	0
3	SO4	A	603	-	4,4,4	0.19	0	6,6,6	0.30	0
8	TRS	A	620	-	7,7,7	0.43	0	9,9,9	1.13	0
3	SO4	A	606	-	4,4,4	0.17	0	6,6,6	0.38	0
3	SO4	A	609	-	4,4,4	0.16	0	6,6,6	0.08	0
5	GOL	A	624	-	5,5,5	0.31	0	5,5,5	0.70	0
5	GOL	A	619	-	5,5,5	0.57	0	5,5,5	1.18	0
4	PGE	A	621	-	9,9,9	0.46	0	8,8,8	0.47	0
5	GOL	A	615	-	5,5,5	0.43	0	5,5,5	0.35	0
3	SO4	A	608	-	4,4,4	0.19	0	6,6,6	0.19	0
3	SO4	A	602	-	4,4,4	0.15	0	6,6,6	0.11	0
4	PGE	A	610	-	9,9,9	0.29	0	8,8,8	0.49	0
3	SO4	A	605	-	4,4,4	0.18	0	6,6,6	0.32	0
5	GOL	A	613	-	5,5,5	0.37	0	5,5,5	0.32	0

Mol	Type	Chain	Res	Link	Bond lengths			Bond angles		
					Counts	RMSZ	# Z > 2	Counts	RMSZ	# Z > 2
3	SO4	A	604	-	4,4,4	0.26	0	6,6,6	0.53	0
4	PGE	A	612	-	9,9,9	0.26	0	8,8,8	0.57	0
2	FAD	A	601	-	51,58,58	1.36	4 (7%)	60,89,89	2.11	6 (10%)
3	SO4	A	607	-	4,4,4	0.19	0	6,6,6	0.38	0
5	GOL	A	622	-	5,5,5	0.43	0	5,5,5	0.60	0
4	PGE	A	611	-	9,9,9	0.35	0	8,8,8	0.70	0
4	PGE	A	618	-	9,9,9	0.39	0	8,8,8	0.32	0
7	PG4	A	617	-	7,7,12	0.63	0	6,6,11	0.21	0
5	GOL	A	625	-	5,5,5	0.46	0	5,5,5	0.29	0
4	PGE	A	616	-	9,9,9	0.35	0	8,8,8	0.35	0

In the following table, the Chirals column lists the number of chiral outliers, the number of chiral centers analysed, the number of these observed in the model and the number defined in the Chemical Component Dictionary. Similar counts are reported in the Torsion and Rings columns. '-' means no outliers of that kind were identified.

Mol	Type	Chain	Res	Link	Chirals	Torsions	Rings
8	TRS	A	620	-	-	9/9/9/9	-
5	GOL	A	623	-	-	2/4/4/4	-
5	GOL	A	615	-	-	2/4/4/4	-
5	GOL	A	619	-	-	2/4/4/4	-
7	PG4	A	617	-	-	4/5/5/10	-
4	PGE	A	610	-	-	5/7/7/7	-
4	PGE	A	618	-	-	4/7/7/7	-
5	GOL	A	622	-	-	2/4/4/4	-
5	GOL	A	625	-	-	2/4/4/4	-
4	PGE	A	621	-	-	2/7/7/7	-
5	GOL	A	613	-	-	2/4/4/4	-
4	PGE	A	616	-	-	3/7/7/7	-
4	PGE	A	611	-	-	1/7/7/7	-
5	GOL	A	624	-	-	2/4/4/4	-
4	PGE	A	612	-	-	4/7/7/7	-
2	FAD	A	601	-	-	1/30/50/50	0/6/6/6

All (4) bond length outliers are listed below:

Mol	Chain	Res	Type	Atoms	Z	Observed(Å)	Ideal(Å)
2	A	601	FAD	C4X-C10	6.09	1.44	1.38
2	A	601	FAD	C4-N3	4.26	1.40	1.33

Continued on next page...

Continued from previous page...

Mol	Chain	Res	Type	Atoms	Z	Observed(Å)	Ideal(Å)
2	A	601	FAD	C9A-N10	3.17	1.42	1.38
2	A	601	FAD	C5X-N5	3.01	1.40	1.35

All (6) bond angle outliers are listed below:

Mol	Chain	Res	Type	Atoms	Z	Observed(°)	Ideal(°)
2	A	601	FAD	C4-N3-C2	12.27	125.50	115.14
2	A	601	FAD	C4X-C4-N3	-6.60	114.40	123.43
2	A	601	FAD	C10-C4X-N5	4.25	124.19	121.26
2	A	601	FAD	C4-C4X-C10	-3.82	117.42	119.95
2	A	601	FAD	C4X-C10-N10	-3.18	117.03	120.30
2	A	601	FAD	C5A-C6A-N6A	2.65	124.39	120.35

There are no chirality outliers.

All (47) torsion outliers are listed below:

Mol	Chain	Res	Type	Atoms
8	A	620	TRS	C1-C-C2-O2
8	A	620	TRS	C3-C-C2-O2
8	A	620	TRS	N-C-C2-O2
5	A	624	GOL	O1-C1-C2-O2
5	A	624	GOL	O1-C1-C2-C3
5	A	615	GOL	O1-C1-C2-C3
5	A	613	GOL	C1-C2-C3-O3
5	A	613	GOL	O2-C2-C3-O3
5	A	622	GOL	C1-C2-C3-O3
5	A	625	GOL	O1-C1-C2-C3
4	A	612	PGE	O3-C5-C6-O4
4	A	618	PGE	O3-C5-C6-O4
4	A	611	PGE	O1-C1-C2-O2
4	A	618	PGE	O1-C1-C2-O2
4	A	610	PGE	O2-C3-C4-O3
5	A	623	GOL	C1-C2-C3-O3
4	A	621	PGE	O3-C5-C6-O4
4	A	616	PGE	O1-C1-C2-O2
5	A	615	GOL	O1-C1-C2-O2
5	A	622	GOL	O2-C2-C3-O3
5	A	625	GOL	O1-C1-C2-O2
7	A	617	PG4	O3-C5-C6-O4
4	A	618	PGE	O2-C3-C4-O3
4	A	610	PGE	O1-C1-C2-O2
8	A	620	TRS	C2-C-C1-O1

Continued on next page...

Continued from previous page...

Mol	Chain	Res	Type	Atoms
7	A	617	PG4	C6-C5-O3-C4
4	A	612	PGE	O1-C1-C2-O2
4	A	616	PGE	O3-C5-C6-O4
4	A	621	PGE	O1-C1-C2-O2
4	A	610	PGE	C1-C2-O2-C3
5	A	619	GOL	O1-C1-C2-O2
8	A	620	TRS	N-C-C1-O1
8	A	620	TRS	C2-C-C3-O3
7	A	617	PG4	C8-C7-O4-C6
4	A	618	PGE	C3-C4-O3-C5
4	A	610	PGE	C6-C5-O3-C4
8	A	620	TRS	C3-C-C1-O1
8	A	620	TRS	C1-C-C3-O3
7	A	617	PG4	O4-C7-C8-O5
4	A	612	PGE	O2-C3-C4-O3
4	A	612	PGE	C1-C2-O2-C3
5	A	619	GOL	O1-C1-C2-C3
5	A	623	GOL	O2-C2-C3-O3
4	A	610	PGE	O3-C5-C6-O4
8	A	620	TRS	N-C-C3-O3
4	A	616	PGE	O2-C3-C4-O3
2	A	601	FAD	O4B-C4B-C5B-O5B

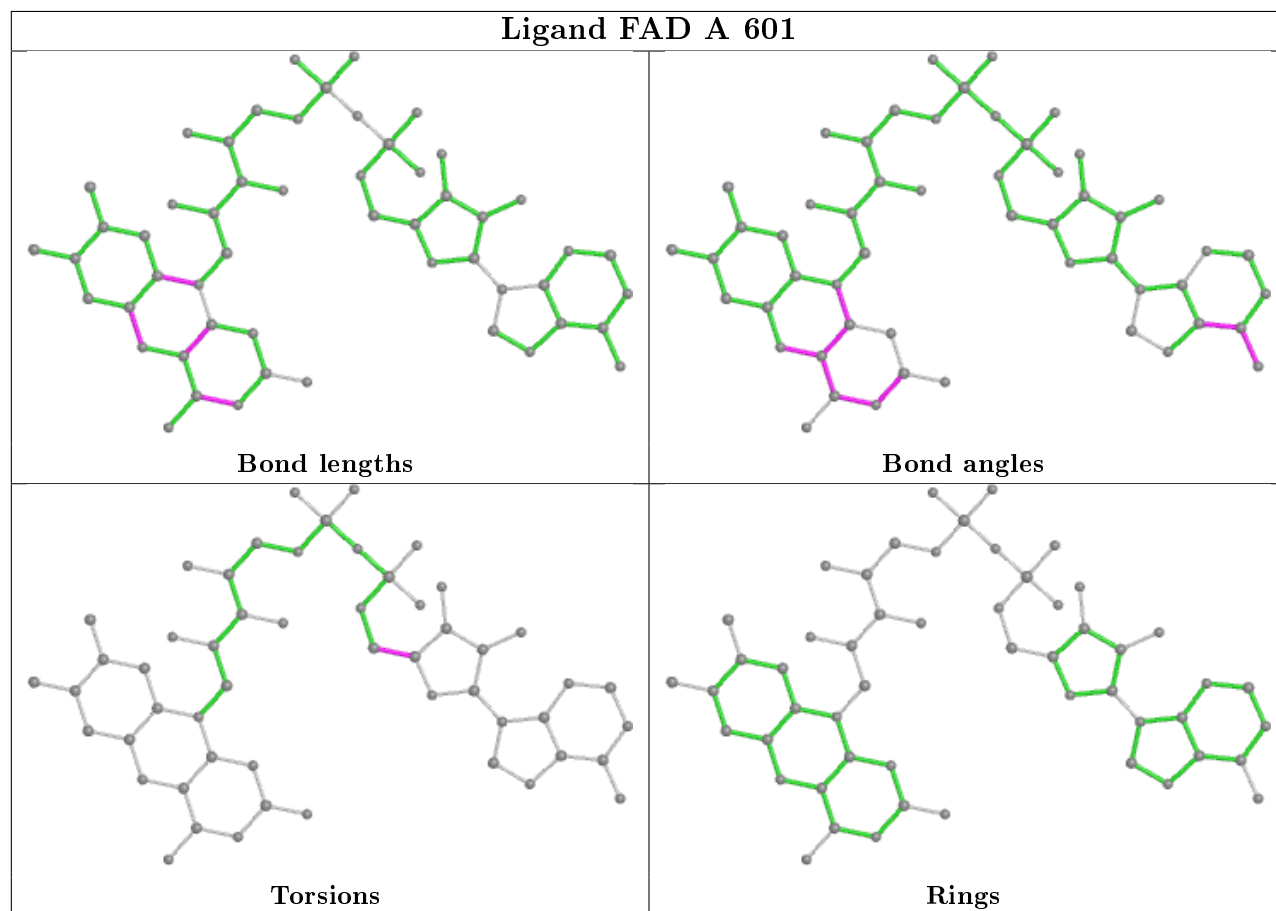
There are no ring outliers.

7 monomers are involved in 11 short contacts:

Mol	Chain	Res	Type	Clashes	Symm-Clashes
5	A	623	GOL	1	0
3	A	603	SO4	1	0
5	A	619	GOL	3	0
3	A	605	SO4	1	0
4	A	612	PGE	1	0
2	A	601	FAD	1	0
7	A	617	PG4	3	0

The following is a two-dimensional graphical depiction of Mogul quality analysis of bond lengths, bond angles, torsion angles, and ring geometry for all instances of the Ligand of Interest. In addition, ligands with molecular weight > 250 and outliers as shown on the validation Tables will also be included. For torsion angles, if less than 5% of the Mogul distribution of torsion angles is within 10 degrees of the torsion angle in question, then that torsion angle is considered an outlier. Any bond that is central to one or more torsion angles identified as an outlier by Mogul will be highlighted in the graph. For rings, the root-mean-square deviation (RMSD) between the ring

in question and similar rings identified by Mogul is calculated over all ring torsion angles. If the average RMSD is greater than 60 degrees and the minimal RMSD between the ring in question and any Mogul-identified rings is also greater than 60 degrees, then that ring is considered an outlier. The outliers are highlighted in purple. The color gray indicates Mogul did not find sufficient equivalents in the CSD to analyse the geometry.



5.7 Other polymers [i](#)

There are no such residues in this entry.

5.8 Polymer linkage issues [i](#)

There are no chain breaks in this entry.

6 Fit of model and data

6.1 Protein, DNA and RNA chains

In the following table, the column labelled ‘#RSRZ> 2’ contains the number (and percentage) of RSRZ outliers, followed by percent RSRZ outliers for the chain as percentile scores relative to all X-ray entries and entries of similar resolution. The OWAB column contains the minimum, median, 95th percentile and maximum values of the occupancy-weighted average B-factor per residue. The column labelled ‘Q< 0.9’ lists the number of (and percentage) of residues with an average occupancy less than 0.9.

Mol	Chain	Analysed	<RSRZ>	#RSRZ>2	OWAB(Å ²)	Q<0.9
1	A	521/521 (100%)	-0.10	30 (5%) 23 22	16, 35, 68, 138	0

All (30) RSRZ outliers are listed below:

Mol	Chain	Res	Type	RSRZ
1	A	199	ALA	11.0
1	A	200	GLU	6.5
1	A	198	GLY	6.5
1	A	197	THR	5.7
1	A	521	ALA	5.1
1	A	201	LYS	4.7
1	A	5	ASN	4.7
1	A	12	ALA	4.2
1	A	165	ASP	3.5
1	A	520	THR	3.2
1	A	57	SER	3.2
1	A	203	ALA	3.0
1	A	164	THR	2.9
1	A	117	GLY	2.9
1	A	9[A]	GLN	2.7
1	A	71	GLY	2.7
1	A	202	ARG	2.6
1	A	59	PRO	2.6
1	A	48[A]	ASP	2.5
1	A	11	LYS	2.5
1	A	6	MET	2.5
1	A	58	LEU	2.4
1	A	78	PHE	2.4
1	A	8	THR	2.4
1	A	179[A]	LYS	2.3
1	A	4	THR	2.3
1	A	161	ASN	2.3

Continued on next page...

Continued from previous page...

Mol	Chain	Res	Type	RSRZ
1	A	65	PHE	2.2
1	A	93	ALA	2.1
1	A	60	VAL	2.0

6.2 Non-standard residues in protein, DNA, RNA chains [i](#)

There are no non-standard protein/DNA/RNA residues in this entry.

6.3 Carbohydrates [i](#)

There are no monosaccharides in this entry.

6.4 Ligands [i](#)

In the following table, the Atoms column lists the number of modelled atoms in the group and the number defined in the chemical component dictionary. The B-factors column lists the minimum, median, 95th percentile and maximum values of B factors of atoms in the group. The column labelled 'Q< 0.9' lists the number of atoms with occupancy less than 0.9.

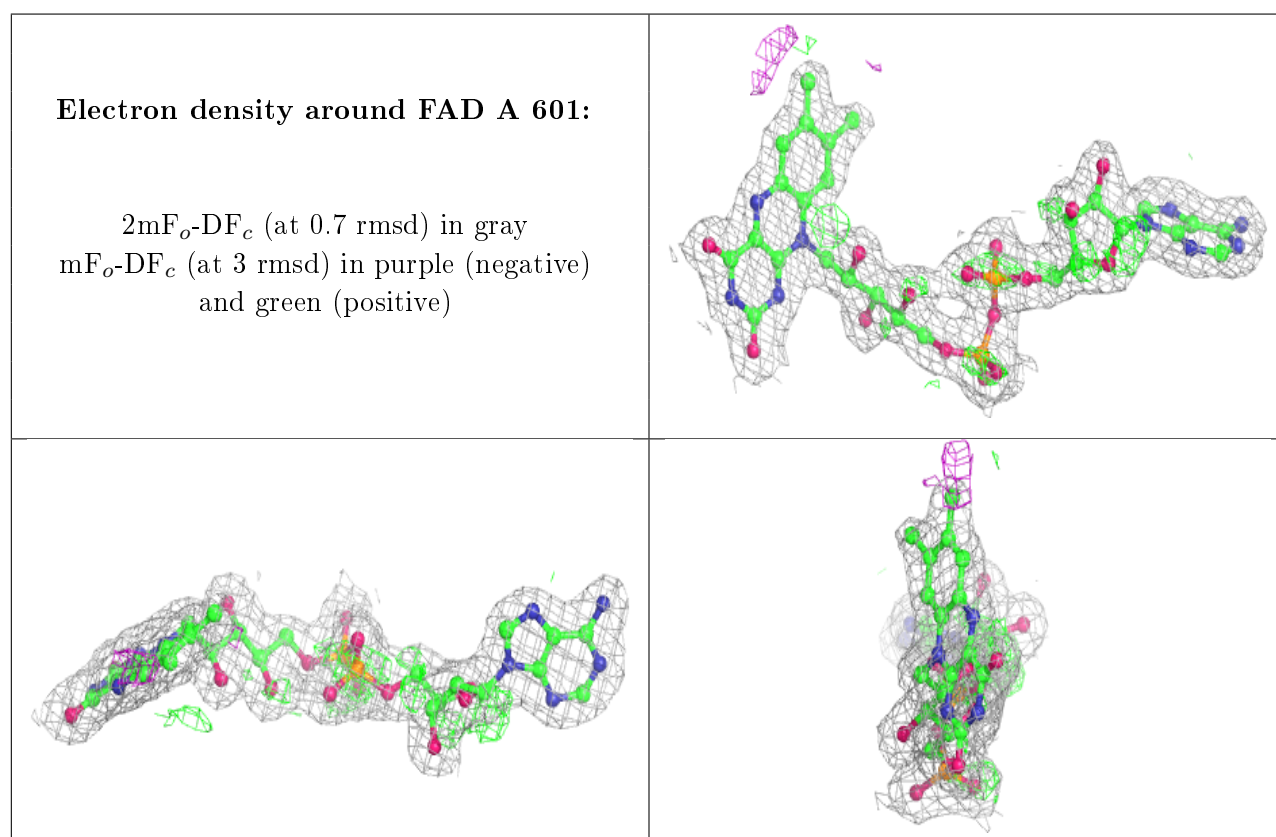
Mol	Type	Chain	Res	Atoms	RSCC	RSR	B-factors(Å ²)	Q<0.9
3	SO4	A	606	5/5	0.78	0.21	58,74,77,78	5
5	GOL	A	623	6/6	0.82	0.26	65,78,86,93	0
5	GOL	A	624	6/6	0.83	0.16	55,75,90,90	0
8	TRS	A	620	8/8	0.84	0.17	22,50,55,60	20
5	GOL	A	622	6/6	0.84	0.17	52,66,83,85	0
4	PGE	A	618	10/10	0.84	0.24	56,80,90,90	0
3	SO4	A	608	5/5	0.85	0.17	67,67,73,78	5
5	GOL	A	619	6/6	0.86	0.21	40,62,76,88	0
7	PG4	A	617	8/13	0.87	0.12	59,68,72,74	0
4	PGE	A	621	10/10	0.88	0.21	17,41,53,57	24
4	PGE	A	612	10/10	0.89	0.12	41,58,65,74	0
5	GOL	A	625	6/6	0.91	0.18	61,74,89,93	0
4	PGE	A	616	10/10	0.92	0.26	35,61,80,84	0
4	PGE	A	611	10/10	0.93	0.21	40,54,71,86	0
3	SO4	A	603	5/5	0.94	0.25	66,66,72,74	5
5	GOL	A	615	6/6	0.94	0.12	42,61,74,83	0
5	GOL	A	613	6/6	0.94	0.12	41,58,78,81	0
4	PGE	A	610	10/10	0.95	0.08	36,50,66,79	0
3	SO4	A	609	5/5	0.98	0.10	33,47,52,57	5
2	FAD	A	601	53/53	0.98	0.12	16,22,29,34	0

Continued on next page...

Continued from previous page...

Mol	Type	Chain	Res	Atoms	RSCC	RSR	B-factors(\AA^2)	Q<0.9
3	SO4	A	604	5/5	0.98	0.07	28,29,37,37	0
6	CD	A	614	1/1	0.98	0.05	43,43,43,43	1
3	SO4	A	602	5/5	0.98	0.10	57,66,75,81	5
3	SO4	A	607	5/5	0.98	0.08	51,52,56,61	0
3	SO4	A	605	5/5	0.99	0.06	42,45,46,49	0

The following is a graphical depiction of the model fit to experimental electron density of all instances of the Ligand of Interest. In addition, ligands with molecular weight > 250 and outliers as shown on the geometry validation Tables will also be included. Each fit is shown from different orientation to approximate a three-dimensional view.



6.5 Other polymers [\(i\)](#)

There are no such residues in this entry.