



Full wwPDB X-ray Structure Validation Report ⓘ

Aug 7, 2020 – 12:40 PM BST

PDB ID : 3O21
Title : High resolution structure of GluA3 N-terminal domain (NTD)
Authors : Rossmann, M.; Sukumaran, M.; Penn, A.C.; Veprintsev, D.B.; Babu, M.M.;
Jensen, M.H.; Greger, I.H.
Deposited on : 2010-07-22
Resolution : 2.20 Å(reported)

This is a Full wwPDB X-ray Structure Validation Report for a publicly released PDB entry.

We welcome your comments at validation@mail.wwpdb.org

A user guide is available at

<https://www.wwpdb.org/validation/2017/XrayValidationReportHelp>

with specific help available everywhere you see the ⓘ symbol.

The following versions of software and data (see [references ⓘ](#)) were used in the production of this report:

MolProbity : 4.02b-467
Mogul : 1.8.5 (274361), CSD as541be (2020)
Xtriage (Phenix) : 1.13
EDS : 2.13.1
Percentile statistics : 20191225.v01 (using entries in the PDB archive December 25th 2019)
Refmac : 5.8.0158
CCP4 : 7.0.044 (Gargrove)
Ideal geometry (proteins) : Engh & Huber (2001)
Ideal geometry (DNA, RNA) : Parkinson et al. (1996)
Validation Pipeline (wwPDB-VP) : 2.13.1

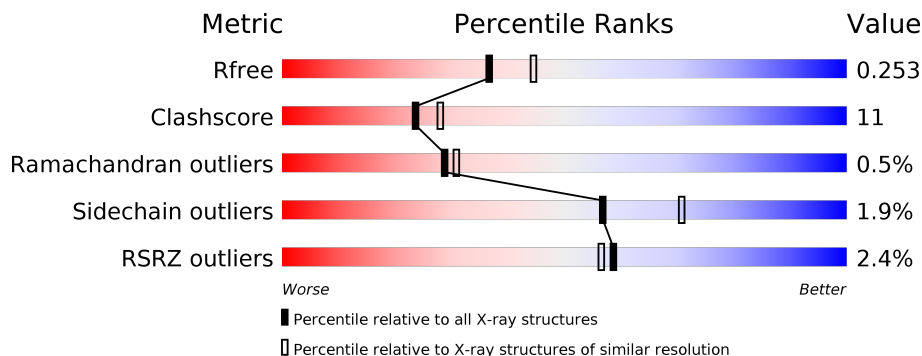
1 Overall quality at a glance i

The following experimental techniques were used to determine the structure:

X-RAY DIFFRACTION

The reported resolution of this entry is 2.20 Å.

Percentile scores (ranging between 0-100) for global validation metrics of the entry are shown in the following graphic. The table shows the number of entries on which the scores are based.



Metric	Whole archive (#Entries)	Similar resolution (#Entries, resolution range(Å))
R_{free}	130704	4898 (2.20-2.20)
Clashscore	141614	5594 (2.20-2.20)
Ramachandran outliers	138981	5503 (2.20-2.20)
Sidechain outliers	138945	5504 (2.20-2.20)
RSRZ outliers	127900	4800 (2.20-2.20)

The table below summarises the geometric issues observed across the polymeric chains and their fit to the electron density. The red, orange, yellow and green segments on the lower bar indicate the fraction of residues that contain outliers for ≥ 3 , 2, 1 and 0 types of geometric quality criteria respectively. A grey segment represents the fraction of residues that are not modelled. The numeric value for each fraction is indicated below the corresponding segment, with a dot representing fractions $\leq 5\%$. The upper red bar (where present) indicates the fraction of residues that have poor fit to the electron density. The numeric value is given above the bar.

Mol	Chain	Length	Quality of chain
1	A	389	<div style="display: flex; align-items: center;"> <div style="width: 4%; height: 10px; background-color: red; margin-right: 5px;"></div> <div style="width: 78%; height: 10px; background-color: green; margin-right: 5px;"></div> <div style="width: 17%; height: 10px; background-color: yellow; margin-right: 5px;"></div> <div style="width: 2%; height: 10px; background-color: orange; margin-right: 5px;"></div> <div style="width: 2%; height: 10px; background-color: grey;"></div> </div> <p style="margin-left: 40px;">4% 78% 17% • •</p>
1	B	389	<div style="display: flex; align-items: center;"> <div style="width: 2%; height: 10px; background-color: red; margin-right: 5px;"></div> <div style="width: 75%; height: 10px; background-color: green; margin-right: 5px;"></div> <div style="width: 18%; height: 10px; background-color: yellow; margin-right: 5px;"></div> <div style="width: 2%; height: 10px; background-color: orange; margin-right: 5px;"></div> <div style="width: 6%; height: 10px; background-color: grey;"></div> </div> <p style="margin-left: 40px;">2% 75% 18% • 6%</p>
1	C	389	<div style="display: flex; align-items: center;"> <div style="width: 0%; height: 10px; background-color: red; margin-right: 5px;"></div> <div style="width: 81%; height: 10px; background-color: green; margin-right: 5px;"></div> <div style="width: 14%; height: 10px; background-color: yellow; margin-right: 5px;"></div> <div style="width: 2%; height: 10px; background-color: orange; margin-right: 5px;"></div> <div style="width: 2%; height: 10px; background-color: grey;"></div> </div> <p style="margin-left: 40px;">% 81% 14% • •</p>
1	D	389	<div style="display: flex; align-items: center;"> <div style="width: 2%; height: 10px; background-color: red; margin-right: 5px;"></div> <div style="width: 78%; height: 10px; background-color: green; margin-right: 5px;"></div> <div style="width: 17%; height: 10px; background-color: yellow; margin-right: 5px;"></div> <div style="width: 2%; height: 10px; background-color: orange; margin-right: 5px;"></div> <div style="width: 2%; height: 10px; background-color: grey;"></div> </div> <p style="margin-left: 40px;">2% 78% 17% • •</p>

2 Entry composition i

There are 4 unique types of molecules in this entry. The entry contains 12793 atoms, of which 0 are hydrogens and 0 are deuteriums.

In the tables below, the ZeroOcc column contains the number of atoms modelled with zero occupancy, the AltConf column contains the number of residues with at least one atom in alternate conformation and the Trace column contains the number of residues modelled with at most 2 atoms.

- Molecule 1 is a protein called Glutamate receptor 3.

Mol	Chain	Residues	Atoms					ZeroOcc	AltConf	Trace
			Total	C	N	O	S			
1	A	374	Total 3025	C 1930	N 522	O 557	S 16	0	0	0
1	B	365	Total 2970	C 1897	N 517	O 540	S 16	0	0	0
1	C	375	Total 3049	C 1943	N 530	O 560	S 16	0	0	0
1	D	375	Total 3035	C 1932	N 529	O 558	S 16	0	0	0

There are 32 discrepancies between the modelled and reference sequences:

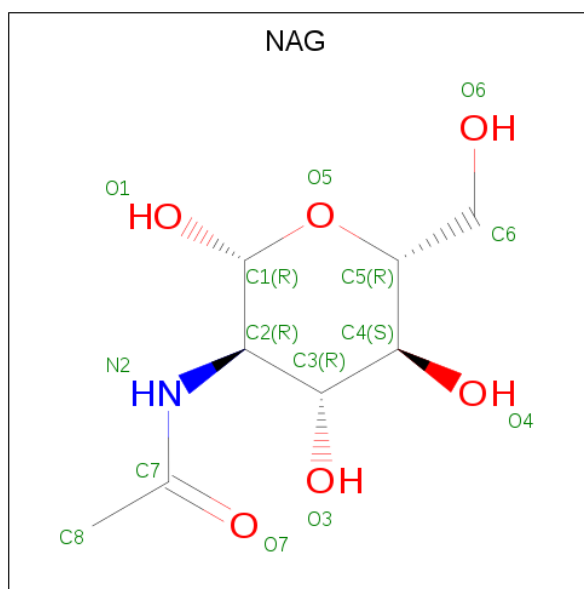
Chain	Residue	Modelled	Actual	Comment	Reference
A	382	GLY	-	expression tag	UNP P19492
A	383	THR	-	expression tag	UNP P19492
A	384	HIS	-	expression tag	UNP P19492
A	385	HIS	-	expression tag	UNP P19492
A	386	HIS	-	expression tag	UNP P19492
A	387	HIS	-	expression tag	UNP P19492
A	388	HIS	-	expression tag	UNP P19492
A	389	HIS	-	expression tag	UNP P19492
B	382	GLY	-	expression tag	UNP P19492
B	383	THR	-	expression tag	UNP P19492
B	384	HIS	-	expression tag	UNP P19492
B	385	HIS	-	expression tag	UNP P19492
B	386	HIS	-	expression tag	UNP P19492
B	387	HIS	-	expression tag	UNP P19492
B	388	HIS	-	expression tag	UNP P19492
B	389	HIS	-	expression tag	UNP P19492
C	382	GLY	-	expression tag	UNP P19492
C	383	THR	-	expression tag	UNP P19492
C	384	HIS	-	expression tag	UNP P19492
C	385	HIS	-	expression tag	UNP P19492
C	386	HIS	-	expression tag	UNP P19492

Continued on next page...

Continued from previous page...

Chain	Residue	Modelled	Actual	Comment	Reference
C	387	HIS	-	expression tag	UNP P19492
C	388	HIS	-	expression tag	UNP P19492
C	389	HIS	-	expression tag	UNP P19492
D	382	GLY	-	expression tag	UNP P19492
D	383	THR	-	expression tag	UNP P19492
D	384	HIS	-	expression tag	UNP P19492
D	385	HIS	-	expression tag	UNP P19492
D	386	HIS	-	expression tag	UNP P19492
D	387	HIS	-	expression tag	UNP P19492
D	388	HIS	-	expression tag	UNP P19492
D	389	HIS	-	expression tag	UNP P19492

- Molecule 2 is 2-acetamido-2-deoxy-beta-D-glucopyranose (three-letter code: NAG) (formula: $C_8H_{15}NO_6$).



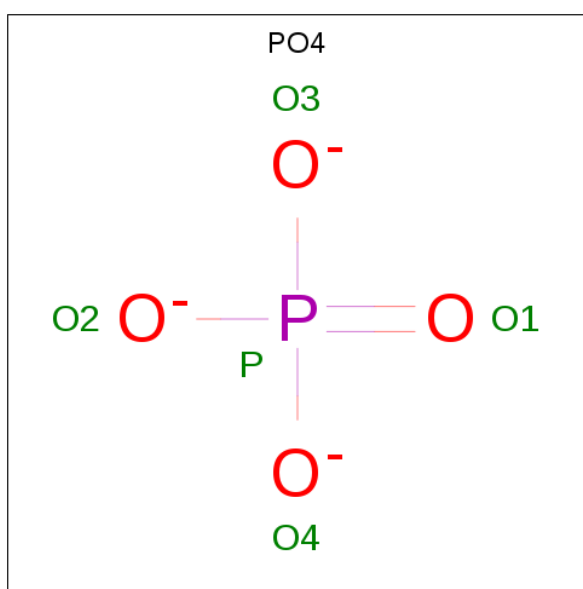
Mol	Chain	Residues	Atoms				ZeroOcc	AltConf
			Total	C	N	O		
2	A	1	Total	C	N	O	0	0
			14	8	1	5		
2	A	1	Total	C	N	O	0	0
			14	8	1	5		
2	B	1	Total	C	N	O	0	0
			14	8	1	5		
2	C	1	Total	C	N	O	0	0
			14	8	1	5		
2	C	1	Total	C	N	O	0	0
			14	8	1	5		

Continued on next page...

Continued from previous page...

Mol	Chain	Residues	Atoms				ZeroOcc	AltConf
2	C	1	Total	C	N	O	0	0
			14	8	1	5		
2	D	1	Total	C	N	O	0	0
			14	8	1	5		
2	D	1	Total	C	N	O	0	0
			14	8	1	5		
2	D	1	Total	C	N	O	0	0
			14	8	1	5		

- Molecule 3 is PHOSPHATE ION (three-letter code: PO4) (formula: O₄P).



Mol	Chain	Residues	Atoms			ZeroOcc	AltConf
3	B	1	Total	O	P	0	0
			5	4	1		
3	B	1	Total	O	P	0	0
			5	4	1		

- Molecule 4 is water.

Mol	Chain	Residues	Atoms		ZeroOcc	AltConf
4	A	117	Total	O	0	0
			117	117		
4	B	117	Total	O	0	0
			117	117		
4	C	170	Total	O	0	0
			170	170		

Continued on next page...

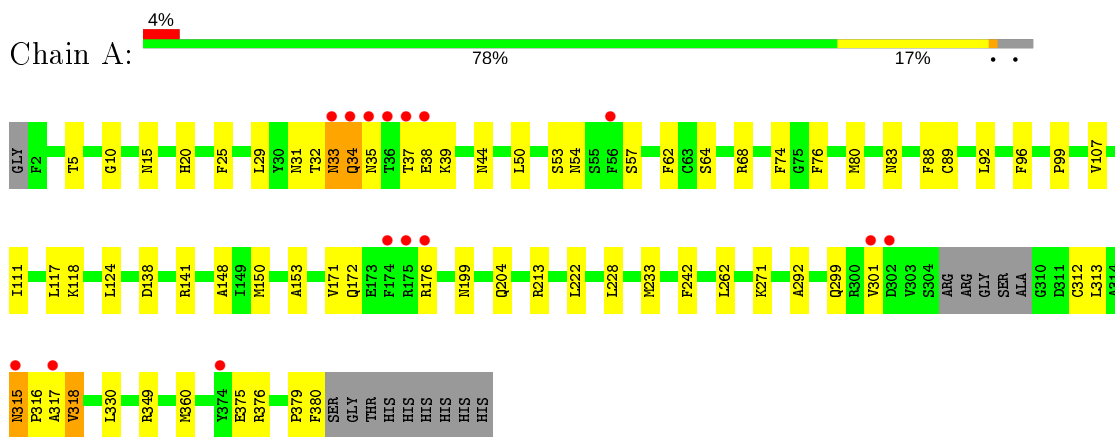
Continued from previous page...

Mol	Chain	Residues	Atoms		ZeroOcc	AltConf
4	D	174	Total 174	O 174	0	0

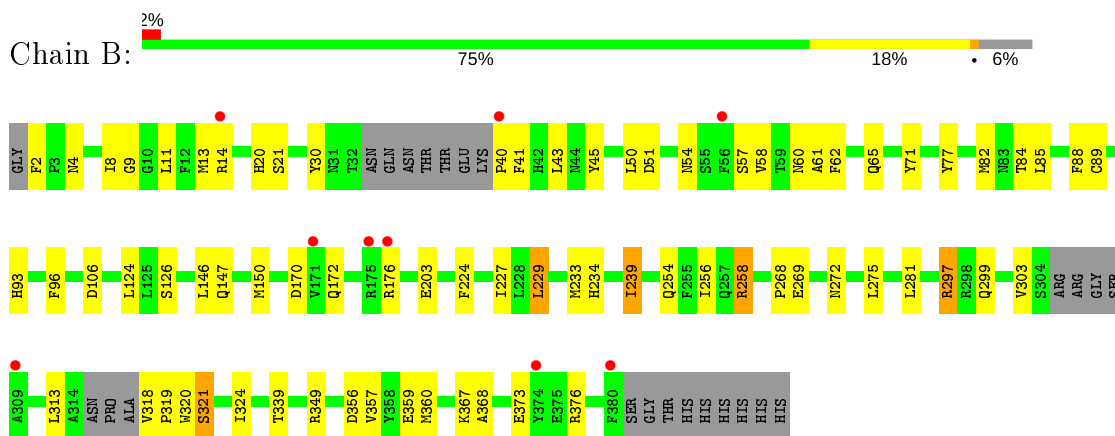
3 Residue-property plots [i](#)

These plots are drawn for all protein, RNA, DNA and oligosaccharide chains in the entry. The first graphic for a chain summarises the proportions of the various outlier classes displayed in the second graphic. The second graphic shows the sequence view annotated by issues in geometry and electron density. Residues are color-coded according to the number of geometric quality criteria for which they contain at least one outlier: green = 0, yellow = 1, orange = 2 and red = 3 or more. A red dot above a residue indicates a poor fit to the electron density ($RSRZ > 2$). Stretches of 2 or more consecutive residues without any outlier are shown as a green connector. Residues present in the sample, but not in the model, are shown in grey.

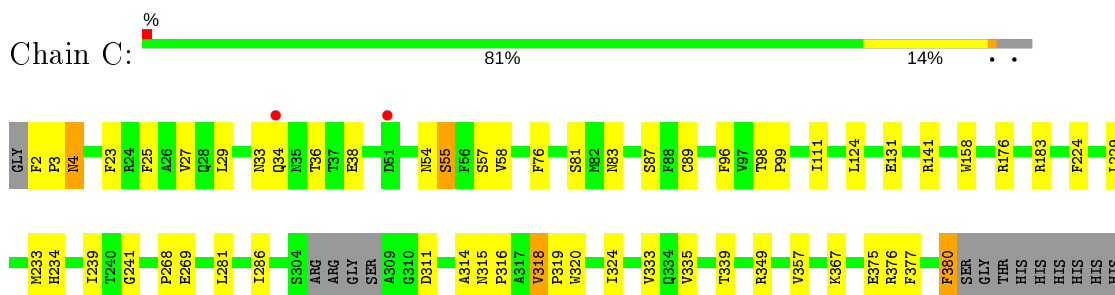
- Molecule 1: Glutamate receptor 3



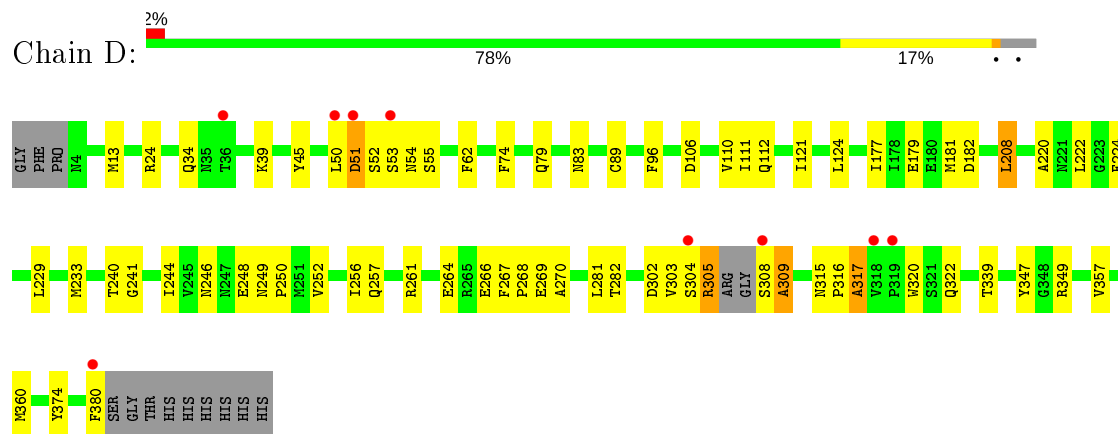
- Molecule 1: Glutamate receptor 3



- Molecule 1: Glutamate receptor 3



- Molecule 1: Glutamate receptor 3



4 Data and refinement statistics

Property	Value	Source
Space group	P 21 21 21	Depositor
Cell constants a, b, c, α , β , γ	98.75Å 130.91Å 131.09Å 90.00° 90.00° 90.00°	Depositor
Resolution (Å)	41.40 – 2.20 41.40 – 2.20	Depositor EDS
% Data completeness (in resolution range)	99.5 (41.40-2.20) 99.5 (41.40-2.20)	Depositor EDS
R_{merge}	0.09	Depositor
R_{sym}	(Not available)	Depositor
$\langle I/\sigma(I) \rangle$ ¹	1.94 (at 2.20Å)	Xtriage
Refinement program	PHENIX 1.6.1_357	Depositor
R, R_{free}	0.207 , 0.258 0.202 , 0.253	Depositor DCC
R_{free} test set	3457 reflections (3.99%)	wwPDB-VP
Wilson B-factor (Å ²)	29.4	Xtriage
Anisotropy	0.455	Xtriage
Bulk solvent k_{sol} (e/Å ³), B_{sol} (Å ²)	0.34 , 38.5	EDS
L-test for twinning ²	$\langle L \rangle = 0.49$, $\langle L^2 \rangle = 0.33$	Xtriage
Estimated twinning fraction	0.008 for -h,l,k	Xtriage
F_o, F_c correlation	0.94	EDS
Total number of atoms	12793	wwPDB-VP
Average B, all atoms (Å ²)	34.0	wwPDB-VP

Xtriage's analysis on translational NCS is as follows: *The largest off-origin peak in the Patterson function is 6.83% of the height of the origin peak. No significant pseudotranslation is detected.*

¹Intensities estimated from amplitudes.

²Theoretical values of $\langle |L| \rangle$, $\langle L^2 \rangle$ for acentric reflections are 0.5, 0.333 respectively for untwinned datasets, and 0.375, 0.2 for perfectly twinned datasets.

5 Model quality [i](#)

5.1 Standard geometry [i](#)

Bond lengths and bond angles in the following residue types are not validated in this section: PO4, NAG

The Z score for a bond length (or angle) is the number of standard deviations the observed value is removed from the expected value. A bond length (or angle) with $|Z| > 5$ is considered an outlier worth inspection. RMSZ is the root-mean-square of all Z scores of the bond lengths (or angles).

Mol	Chain	Bond lengths		Bond angles	
		RMSZ	# Z >5	RMSZ	# Z >5
1	A	0.43	0/3096	0.56	0/4195
1	B	0.43	0/3038	0.54	0/4108
1	C	0.45	0/3120	0.57	0/4224
1	D	0.44	0/3104	0.56	0/4203
All	All	0.44	0/12358	0.56	0/16730

There are no bond length outliers.

There are no bond angle outliers.

There are no chirality outliers.

There are no planarity outliers.

5.2 Too-close contacts [i](#)

In the following table, the Non-H and H(model) columns list the number of non-hydrogen atoms and hydrogen atoms in the chain respectively. The H(added) column lists the number of hydrogen atoms added and optimized by MolProbity. The Clashes column lists the number of clashes within the asymmetric unit, whereas Symm-Clashes lists symmetry related clashes.

Mol	Chain	Non-H	H(model)	H(added)	Clashes	Symm-Clashes
1	A	3025	0	2915	86	0
1	B	2970	0	2881	79	0
1	C	3049	0	2954	54	0
1	D	3035	0	2932	70	0
2	A	28	0	26	0	0
2	B	14	0	13	0	0
2	C	42	0	36	2	0
2	D	42	0	38	0	0
3	B	10	0	0	1	0

Continued on next page...

Continued from previous page...

Mol	Chain	Non-H	H(model)	H(added)	Clashes	Symm-Clashes
4	A	117	0	0	4	0
4	B	117	0	0	4	0
4	C	170	0	0	8	0
4	D	174	0	0	4	0
All	All	12793	0	11795	269	0

The all-atom clashscore is defined as the number of clashes found per 1000 atoms (including hydrogen atoms). The all-atom clashscore for this structure is 11.

All (269) close contacts within the same asymmetric unit are listed below, sorted by their clash magnitude.

Atom-1	Atom-2	Interatomic distance (Å)	Clash overlap (Å)
1:A:33:ASN:HA	1:A:34:GLN:CB	1.51	1.38
1:A:33:ASN:CA	1:A:34:GLN:HB2	1.70	1.18
1:A:33:ASN:OD1	1:A:35:ASN:N	1.87	1.08
1:C:87:SER:OG	1:D:54:ASN:OD1	1.71	1.07
1:A:233:MET:HG3	1:A:360:MET:HE2	1.40	1.03
1:D:50:LEU:O	1:D:50:LEU:HD12	1.61	1.01
1:D:316:PRO:HA	1:D:317:ALA:CB	1.92	0.99
1:A:379:PRO:O	1:A:380:PHE:HB2	1.60	0.96
1:B:324:ILE:HG13	4:B:439:HOH:O	1.65	0.96
1:C:367:LYS:HE2	1:C:380:PHE:HZ	1.28	0.95
1:A:32:THR:O	1:A:33:ASN:HB3	1.70	0.92
1:D:303:VAL:HA	1:D:322:GLN:HG2	1.50	0.92
1:D:316:PRO:CB	1:D:317:ALA:HB3	2.01	0.90
1:C:36:THR:HG22	4:C:550:HOH:O	1.73	0.89
1:A:33:ASN:HA	1:A:34:GLN:CG	2.03	0.88
1:D:316:PRO:HA	1:D:317:ALA:HB2	1.55	0.87
1:A:33:ASN:CA	1:A:34:GLN:CB	2.38	0.87
1:D:316:PRO:CA	1:D:317:ALA:HB3	2.05	0.86
1:B:359:GLU:HG2	1:B:368:ALA:HB2	1.58	0.86
1:D:316:PRO:CA	1:D:317:ALA:CB	2.53	0.85
1:B:14:ARG:HG2	4:B:561:HOH:O	1.76	0.84
1:C:376:ARG:HG2	1:C:377:PHE:H	1.38	0.84
1:A:33:ASN:HA	1:A:34:GLN:HB2	0.83	0.80
1:A:153:ALA:HB3	1:B:150:MET:CE	2.13	0.78
1:A:88:PHE:CG	1:B:313:LEU:HD21	2.18	0.78
1:A:150:MET:HA	1:B:150:MET:HE1	1.66	0.78
1:B:229:LEU:HD13	1:B:360:MET:HE3	1.64	0.78
1:C:3:PRO:HA	1:C:4:ASN:CB	2.15	0.77
1:A:124:LEU:CD1	1:A:242:PHE:HE1	1.99	0.76

Continued on next page...

Continued from previous page...

Atom-1	Atom-2	Interatomic distance (Å)	Clash overlap (Å)
1:B:9:GLY:HA3	1:B:65:GLN:OE1	1.86	0.76
1:B:30:TYR:CE2	1:B:43:LEU:HD13	2.21	0.76
1:A:124:LEU:HD12	1:A:242:PHE:HE1	1.49	0.76
1:A:233:MET:HG3	1:A:360:MET:CE	2.14	0.76
1:D:50:LEU:C	1:D:50:LEU:HD12	2.06	0.76
1:A:153:ALA:HB3	1:B:150:MET:HE1	1.68	0.75
1:C:33:ASN:O	1:C:34:GLN:HB2	1.85	0.75
1:A:172:GLN:HG2	1:A:176:ARG:HH12	1.50	0.75
1:D:51:ASP:O	1:D:52:SER:HB3	1.86	0.75
1:A:32:THR:O	1:A:33:ASN:CB	2.34	0.74
1:C:83:ASN:OD1	1:D:55:SER:HB2	1.87	0.74
1:A:312:CYS:O	1:A:313:LEU:HD22	1.89	0.72
1:B:229:LEU:CD2	1:B:360:MET:HE1	2.20	0.72
1:B:233:MET:SD	1:B:239:ILE:HG13	2.29	0.72
1:B:356:ASP:CG	1:B:367:LYS:HE2	2.10	0.72
1:A:62:PHE:CE2	1:A:92:LEU:HD12	2.24	0.72
1:B:320:TRP:HZ3	1:D:374:TYR:HB3	1.54	0.72
1:B:40:PRO:N	1:B:297:ARG:HH22	1.88	0.72
1:C:124:LEU:HD11	1:C:357:VAL:HG21	1.71	0.71
1:C:367:LYS:HE2	1:C:380:PHE:CZ	2.20	0.71
1:C:2:PHE:CD2	1:C:3:PRO:O	2.44	0.70
1:B:281:LEU:HD23	1:B:339:THR:HG21	1.73	0.70
1:B:54:ASN:OD1	1:B:57:SER:HB3	1.92	0.70
1:B:21:SER:OG	1:B:268:PRO:HD2	1.92	0.69
1:A:118:LYS:HD2	1:A:148:ALA:HB2	1.74	0.69
1:A:150:MET:HA	1:B:150:MET:CE	2.21	0.69
1:C:3:PRO:HA	1:C:4:ASN:HB3	1.75	0.69
1:A:124:LEU:CD1	1:A:242:PHE:CE1	2.77	0.68
1:A:53:SER:HA	1:A:80:MET:HE2	1.75	0.67
1:B:281:LEU:CD2	1:B:339:THR:HG21	2.23	0.67
1:A:53:SER:HA	1:A:80:MET:CE	2.25	0.67
1:C:233:MET:SD	1:C:239:ILE:HD12	2.33	0.67
1:C:141:ARG:NE	4:C:404:HOH:O	2.10	0.66
1:A:171:VAL:HG21	1:A:204:GLN:NE2	2.11	0.65
1:C:376:ARG:CG	1:C:377:PHE:H	2.10	0.65
1:D:257:GLN:O	1:D:261:ARG:HG3	1.96	0.65
1:A:50:LEU:HD11	4:A:580:HOH:O	1.96	0.65
2:C:391:NAG:O7	2:C:391:NAG:C1	2.42	0.64
1:A:88:PHE:CD2	1:B:313:LEU:HD21	2.32	0.64
1:D:124:LEU:HD23	1:D:240:THR:HG21	1.80	0.64
1:B:229:LEU:HD22	1:B:360:MET:HE1	1.80	0.64

Continued on next page...

Continued from previous page...

Atom-1	Atom-2	Interatomic distance (Å)	Clash overlap (Å)
1:D:124:LEU:HD21	1:D:357:VAL:HG11	1.80	0.63
1:A:124:LEU:HD12	1:A:242:PHE:CE1	2.33	0.63
1:D:308:SER:O	1:D:309:ALA:HB3	1.99	0.62
1:A:33:ASN:O	1:A:39:LYS:HD2	2.00	0.62
1:B:229:LEU:HD13	1:B:360:MET:CE	2.29	0.62
1:B:13:MET:HE1	1:B:77:TYR:HA	1.80	0.62
1:D:316:PRO:HA	1:D:317:ALA:HB3	1.70	0.62
1:A:33:ASN:CA	1:A:34:GLN:HG2	2.30	0.61
1:A:150:MET:CE	1:B:147:GLN:CD	2.69	0.61
1:C:38:GLU:OE2	2:C:392:NAG:H62	2.00	0.61
1:A:233:MET:HE2	1:A:360:MET:HB3	1.82	0.60
1:A:62:PHE:HE2	1:A:92:LEU:HD12	1.66	0.60
1:A:33:ASN:CA	1:A:34:GLN:CG	2.75	0.59
1:A:172:GLN:HG2	1:A:176:ARG:NH1	2.17	0.59
1:B:124:LEU:HD21	1:B:357:VAL:HG11	1.84	0.59
1:B:54:ASN:O	1:B:58:VAL:HG23	2.02	0.59
1:A:107:VAL:HG22	4:A:435:HOH:O	2.02	0.59
1:D:24:ARG:HD3	1:D:45:TYR:OH	2.03	0.59
1:A:379:PRO:O	1:A:380:PHE:CB	2.40	0.59
1:D:124:LEU:HD21	1:D:357:VAL:CG1	2.32	0.59
1:A:150:MET:HE1	1:B:147:GLN:CD	2.23	0.58
1:A:153:ALA:HB3	1:B:150:MET:HE2	1.84	0.58
1:A:35:ASN:HB3	1:A:38:GLU:HB2	1.84	0.58
1:D:308:SER:O	1:D:309:ALA:CB	2.51	0.58
1:D:316:PRO:HB2	1:D:317:ALA:HB3	1.84	0.58
1:A:111:ILE:N	1:A:111:ILE:HD12	2.18	0.58
1:B:318:VAL:HB	1:B:319:PRO:HD3	1.86	0.58
1:A:31:ASN:HA	1:A:39:LYS:HE3	1.86	0.57
1:B:50:LEU:HD13	1:B:61:ALA:CB	2.34	0.57
1:D:51:ASP:OD1	1:D:53:SER:N	2.30	0.57
1:B:254:GLN:O	1:B:258:ARG:HG2	2.05	0.57
1:A:15:ASN:HA	4:A:559:HOH:O	2.05	0.57
1:D:39:LYS:HG2	1:D:39:LYS:O	2.04	0.57
1:B:50:LEU:HD11	1:B:58:VAL:HA	1.85	0.57
1:B:320:TRP:HE3	1:D:374:TYR:HD1	1.51	0.57
1:C:3:PRO:CA	1:C:4:ASN:HB3	2.34	0.57
1:A:172:GLN:CG	1:A:176:ARG:NH1	2.68	0.56
1:D:270:ALA:HB3	4:D:567:HOH:O	2.03	0.56
1:A:34:GLN:HA	1:A:34:GLN:OE1	2.05	0.56
1:A:213:ARG:HH11	1:A:213:ARG:HG2	1.69	0.56
1:C:3:PRO:HA	1:C:4:ASN:HB2	1.87	0.56

Continued on next page...

Continued from previous page...

Atom-1	Atom-2	Interatomic distance (Å)	Clash overlap (Å)
1:D:281:LEU:HD23	1:D:339:THR:HG21	1.87	0.56
1:C:3:PRO:CA	1:C:4:ASN:CB	2.82	0.56
1:A:33:ASN:H	1:A:34:GLN:HG2	1.71	0.56
1:A:171:VAL:CG2	1:A:204:GLN:NE2	2.69	0.55
1:D:304:SER:O	1:D:305:ARG:HG2	2.05	0.55
1:A:118:LYS:HD2	1:A:148:ALA:CB	2.36	0.55
1:C:234:HIS:HE1	4:C:577:HOH:O	1.89	0.55
1:A:138:ASP:OD1	1:A:141:ARG:NH2	2.39	0.55
1:B:124:LEU:CD2	1:B:357:VAL:HG11	2.36	0.55
1:B:320:TRP:CZ3	1:D:374:TYR:HB3	2.41	0.54
1:A:171:VAL:HG22	1:A:204:GLN:CD	2.28	0.54
1:A:317:ALA:O	1:A:318:VAL:HB	2.08	0.54
1:C:311:ASP:HB3	1:C:314:ALA:HB2	1.89	0.54
1:D:51:ASP:C	1:D:51:ASP:OD1	2.45	0.54
1:B:2:PHE:CD1	1:B:297:ARG:HG3	2.42	0.54
1:A:172:GLN:CG	1:A:176:ARG:HH12	2.21	0.53
1:B:89:CYS:SG	1:B:96:PHE:HB2	2.47	0.53
1:C:2:PHE:HD2	1:C:3:PRO:O	1.90	0.53
1:D:266:GLU:HB2	1:D:267:PHE:CD2	2.43	0.53
1:B:30:TYR:CD2	1:B:43:LEU:HD13	2.44	0.53
1:D:233:MET:SD	1:D:360:MET:SD	3.07	0.53
1:D:121:ILE:HD11	1:D:220:ALA:HB1	1.91	0.53
1:C:55:SER:HB2	1:D:83:ASN:OD1	2.09	0.53
1:A:299:GLN:HB2	1:A:301:VAL:HG23	1.90	0.53
1:C:141:ARG:NH2	4:C:404:HOH:O	2.42	0.53
1:B:13:MET:CE	1:B:77:TYR:HA	2.39	0.52
1:B:299:GLN:HG2	4:D:558:HOH:O	2.09	0.52
1:D:304:SER:O	1:D:305:ARG:CB	2.58	0.52
1:B:268:PRO:O	1:B:269:GLU:HB2	2.10	0.52
1:D:303:VAL:HG12	1:D:322:GLN:HB3	1.92	0.51
1:A:313:LEU:HB3	1:A:316:PRO:CG	2.39	0.51
1:B:93:HIS:CE1	1:B:320:TRP:CZ2	2.97	0.51
1:D:106:ASP:HB3	1:D:347:TYR:CD1	2.46	0.51
1:D:13:MET:HG2	1:D:50:LEU:HD11	1.92	0.51
1:A:62:PHE:CZ	1:A:92:LEU:HD12	2.44	0.51
1:B:203:GLU:HA	1:B:203:GLU:OE1	2.11	0.51
1:A:25:PHE:CZ	1:A:29:LEU:HD21	2.46	0.51
1:C:315:ASN:HA	1:C:316:PRO:C	2.31	0.50
1:A:76:PHE:CE1	1:A:99:PRO:HG2	2.46	0.50
1:D:51:ASP:OD1	1:D:53:SER:CB	2.60	0.50
1:B:146:LEU:HD23	1:B:146:LEU:C	2.32	0.50

Continued on next page...

Continued from previous page...

Atom-1	Atom-2	Interatomic distance (Å)	Clash overlap (Å)
1:D:50:LEU:C	1:D:50:LEU:CD1	2.77	0.50
1:A:33:ASN:N	1:A:34:GLN:HG2	2.26	0.50
1:B:50:LEU:HD13	1:B:61:ALA:HB2	1.93	0.50
1:D:34:GLN:CD	1:D:34:GLN:H	2.16	0.49
1:D:13:MET:HE2	1:D:52:SER:HB2	1.93	0.49
1:D:111:ILE:HD12	1:D:111:ILE:N	2.27	0.49
1:B:82:MET:HE1	4:B:494:HOH:O	2.13	0.49
1:C:183:ARG:HD2	4:C:578:HOH:O	2.13	0.49
1:A:150:MET:HE1	1:B:147:GLN:OE1	2.12	0.49
1:C:376:ARG:HG2	1:C:377:PHE:N	2.18	0.49
1:B:229:LEU:CD1	1:B:360:MET:CE	2.90	0.49
1:C:33:ASN:O	1:C:34:GLN:CB	2.56	0.49
1:B:224:PHE:HA	1:B:227:ILE:HD12	1.95	0.48
1:C:281:LEU:HD23	1:C:339:THR:HG21	1.96	0.48
1:D:304:SER:O	1:D:305:ARG:CG	2.62	0.48
1:D:51:ASP:CG	1:D:53:SER:H	2.15	0.48
1:A:5:THR:HG21	1:A:44:ASN:ND2	2.28	0.48
1:D:106:ASP:OD1	1:D:349:ARG:NH2	2.45	0.48
1:B:106:ASP:OD1	1:B:349:ARG:NH2	2.46	0.48
1:B:170:ASP:OD2	1:B:172:GLN:HB3	2.14	0.48
1:B:54:ASN:HD21	1:B:57:SER:HB2	1.79	0.48
1:A:111:ILE:N	1:A:111:ILE:CD1	2.76	0.48
1:B:373:GLU:HG3	4:B:446:HOH:O	2.13	0.48
1:B:320:TRP:CE3	1:D:374:TYR:HD1	2.31	0.47
1:A:64:SER:O	1:A:68:ARG:HG3	2.15	0.47
1:B:176:ARG:HA	1:B:176:ARG:HD3	1.71	0.47
1:D:268:PRO:O	1:D:269:GLU:HB2	2.14	0.47
1:A:262:LEU:O	1:A:271:LYS:HE2	2.15	0.47
1:D:89:CYS:SG	1:D:96:PHE:HB2	2.55	0.47
1:C:380:PHE:HD1	1:C:380:PHE:C	2.19	0.46
1:D:303:VAL:HG23	1:D:303:VAL:O	2.16	0.46
1:A:213:ARG:NH1	1:A:213:ARG:HG2	2.30	0.46
1:A:88:PHE:CD1	1:B:313:LEU:HD21	2.50	0.46
1:C:333:VAL:CG1	1:C:335:VAL:HG22	2.45	0.46
1:D:246:ASN:ND2	1:D:248:GLU:HG2	2.31	0.46
1:C:268:PRO:O	1:C:269:GLU:HB2	2.15	0.46
1:C:380:PHE:CD1	1:C:380:PHE:C	2.89	0.46
1:C:124:LEU:HD11	1:C:357:VAL:CG2	2.43	0.46
1:A:33:ASN:OD1	1:A:34:GLN:C	2.50	0.46
1:B:318:VAL:O	1:B:321:SER:N	2.49	0.46
1:A:171:VAL:CG2	1:A:204:GLN:CD	2.84	0.45

Continued on next page...

Continued from previous page...

Atom-1	Atom-2	Interatomic distance (Å)	Clash overlap (Å)
1:C:376:ARG:CG	1:C:377:PHE:N	2.76	0.45
1:C:89:CYS:SG	1:C:96:PHE:HB2	2.55	0.45
1:D:315:ASN:HA	1:D:316:PRO:HA	1.71	0.45
1:D:281:LEU:CD2	1:D:339:THR:HG21	2.46	0.45
1:C:111:ILE:HD12	1:C:111:ILE:N	2.31	0.45
1:B:376:ARG:HD3	1:B:376:ARG:HA	1.69	0.45
1:D:224:PHE:CD1	1:D:241:GLY:HA3	2.52	0.45
1:C:141:ARG:CZ	4:C:404:HOH:O	2.60	0.45
1:D:252:VAL:O	1:D:256:ILE:HG12	2.17	0.45
1:D:302:ASP:O	1:D:303:VAL:HG13	2.17	0.45
1:C:183:ARG:CD	4:C:578:HOH:O	2.64	0.45
1:C:224:PHE:CD1	1:C:241:GLY:HA3	2.51	0.45
1:D:106:ASP:HB3	1:D:347:TYR:CE1	2.51	0.45
1:B:256:ILE:HD11	1:B:275:LEU:HD22	1.98	0.45
1:C:281:LEU:CD2	1:C:339:THR:HG21	2.47	0.45
1:B:269:GLU:HA	1:B:272:ASN:OD1	2.16	0.44
1:D:79:GLN:HG2	4:D:486:HOH:O	2.16	0.44
1:C:23:PHE:O	1:C:27:VAL:HG23	2.18	0.44
1:A:150:MET:HE2	1:B:147:GLN:CD	2.37	0.44
1:B:54:ASN:OD1	1:B:57:SER:CB	2.63	0.44
1:A:199:ASN:ND2	1:A:228:LEU:HD12	2.32	0.44
1:B:4:ASN:O	1:B:41:PHE:CB	2.66	0.44
1:C:76:PHE:CE1	1:C:99:PRO:HG2	2.53	0.44
1:D:24:ARG:NH2	4:D:535:HOH:O	2.51	0.44
1:A:10:GLY:HA2	1:A:74:PHE:O	2.18	0.44
1:A:172:GLN:HG3	1:A:176:ARG:NH1	2.31	0.44
1:C:98:THR:HA	1:C:99:PRO:HD3	1.81	0.43
1:A:54:ASN:O	1:A:57:SER:HB3	2.19	0.43
1:C:224:PHE:CE1	1:C:241:GLY:HA3	2.54	0.43
1:B:40:PRO:N	1:B:297:ARG:NH2	2.63	0.43
1:A:83:ASN:OD1	1:B:84:THR:HA	2.19	0.43
1:A:313:LEU:HB3	1:A:316:PRO:HG2	2.01	0.43
1:A:315:ASN:N	1:A:316:PRO:HD2	2.34	0.43
1:B:51:ASP:C	1:B:51:ASP:OD1	2.57	0.43
1:C:124:LEU:HD11	1:C:357:VAL:HG11	2.00	0.43
1:A:317:ALA:O	1:A:318:VAL:CB	2.67	0.42
1:D:74:PHE:CZ	1:D:282:THR:HG23	2.53	0.42
1:B:229:LEU:HD21	1:B:360:MET:HE1	1.99	0.42
1:B:106:ASP:HA	1:B:349:ARG:NH2	2.34	0.42
1:C:25:PHE:CE2	1:C:29:LEU:HD11	2.54	0.42
1:C:58:VAL:HG21	1:C:81:SER:HB2	2.02	0.42

Continued on next page...

Continued from previous page...

Atom-1	Atom-2	Interatomic distance (Å)	Clash overlap (Å)
1:D:304:SER:O	1:D:305:ARG:HB2	2.19	0.42
1:A:349:ARG:HD2	4:A:487:HOH:O	2.20	0.42
1:B:11:LEU:HD21	1:B:61:ALA:HB1	2.01	0.42
1:C:23:PHE:CE1	1:C:286:ILE:HD11	2.54	0.42
1:A:117:LEU:HD23	1:A:117:LEU:HA	1.86	0.42
1:C:318:VAL:HA	1:C:319:PRO:HD2	1.94	0.42
1:C:54:ASN:ND2	1:C:57:SER:H	2.18	0.42
1:B:62:PHE:CD2	1:B:62:PHE:C	2.93	0.42
1:A:292:ALA:HB2	1:A:330:LEU:HD23	2.02	0.41
1:D:222:LEU:HD22	1:D:244:ILE:HG23	2.02	0.41
1:B:8:ILE:O	1:B:45:TYR:HA	2.20	0.41
1:A:88:PHE:CD2	1:B:313:LEU:CD2	3.01	0.41
1:B:71:TYR:HE1	1:B:303:VAL:O	2.03	0.41
1:C:131:GLU:HA	1:C:158:TRP:CD1	2.55	0.41
1:A:117:LEU:HD21	1:A:222:LEU:HD21	2.01	0.41
1:D:110:VAL:HG12	1:D:112:GLN:HG3	2.01	0.41
1:D:264:GLU:O	1:D:264:GLU:HG3	2.21	0.41
1:A:89:CYS:SG	1:A:96:PHE:HB2	2.60	0.41
1:B:229:LEU:HD22	1:B:360:MET:CE	2.50	0.41
1:C:349:ARG:HD2	4:C:539:HOH:O	2.19	0.41
1:A:312:CYS:O	1:A:313:LEU:CD2	2.66	0.41
1:A:375:GLU:O	1:A:376:ARG:HB2	2.20	0.41
1:B:20:HIS:NE2	3:B:391:PO4:O1	2.53	0.41
1:C:375:GLU:O	1:C:376:ARG:HB3	2.21	0.41
1:D:249:ASN:OD1	1:D:250:PRO:HD2	2.21	0.41
1:C:349:ARG:HH11	1:C:349:ARG:HG2	1.86	0.41
1:D:179:GLU:O	1:D:182:ASP:HB2	2.21	0.41
1:D:62:PHE:C	1:D:62:PHE:CD2	2.94	0.40
1:B:85:LEU:HA	1:B:85:LEU:HD12	1.85	0.40
1:D:208:LEU:HA	1:D:208:LEU:HD12	1.84	0.40
1:B:9:GLY:CA	1:B:65:GLN:OE1	2.62	0.40
1:D:224:PHE:CE1	1:D:241:GLY:HA3	2.56	0.40
1:B:4:ASN:O	1:B:41:PHE:HB2	2.22	0.40
1:D:177:ILE:O	1:D:181:MET:HG2	2.21	0.40
1:D:302:ASP:O	1:D:303:VAL:CG1	2.69	0.40

There are no symmetry-related clashes.

5.3 Torsion angles [i](#)

5.3.1 Protein backbone [i](#)

In the following table, the Percentiles column shows the percent Ramachandran outliers of the chain as a percentile score with respect to all X-ray entries followed by that with respect to entries of similar resolution.

The Analysed column shows the number of residues for which the backbone conformation was analysed, and the total number of residues.

Mol	Chain	Analysed	Favoured	Allowed	Outliers	Percentiles	
1	A	370/389 (95%)	356 (96%)	11 (3%)	3 (1%)	19	19
1	B	357/389 (92%)	348 (98%)	9 (2%)	0	100	100
1	C	371/389 (95%)	361 (97%)	8 (2%)	2 (0%)	29	31
1	D	371/389 (95%)	357 (96%)	12 (3%)	2 (0%)	29	31
All	All	1469/1556 (94%)	1422 (97%)	40 (3%)	7 (0%)	29	31

All (7) Ramachandran outliers are listed below:

Mol	Chain	Res	Type
1	D	309	ALA
1	D	317	ALA
1	A	33	ASN
1	C	4	ASN
1	A	34	GLN
1	A	318	VAL
1	C	318	VAL

5.3.2 Protein sidechains [i](#)

In the following table, the Percentiles column shows the percent sidechain outliers of the chain as a percentile score with respect to all X-ray entries followed by that with respect to entries of similar resolution.

The Analysed column shows the number of residues for which the sidechain conformation was analysed, and the total number of residues.

Mol	Chain	Analysed	Rotameric	Outliers	Percentiles	
1	A	324/340 (95%)	321 (99%)	3 (1%)	78	88
1	B	318/340 (94%)	309 (97%)	9 (3%)	43	56
1	C	328/340 (96%)	322 (98%)	6 (2%)	59	72

Continued on next page...

Continued from previous page...

Mol	Chain	Analysed	Rotameric	Outliers	Percentiles
1	D	324/340 (95%)	318 (98%)	6 (2%)	57 71
All	All	1294/1360 (95%)	1270 (98%)	24 (2%)	57 71

All (24) residues with a non-rotameric sidechain are listed below:

Mol	Chain	Res	Type
1	A	20	HIS
1	A	37	THR
1	A	315	ASN
1	B	60	ASN
1	B	88	PHE
1	B	126	SER
1	B	229	LEU
1	B	234	HIS
1	B	239	ILE
1	B	258	ARG
1	B	297	ARG
1	B	321	SER
1	C	55	SER
1	C	176	ARG
1	C	229	LEU
1	C	320	TRP
1	C	324	ILE
1	C	380	PHE
1	D	51	ASP
1	D	208	LEU
1	D	229	LEU
1	D	305	ARG
1	D	320	TRP
1	D	380	PHE

Some sidechains can be flipped to improve hydrogen bonding and reduce clashes. All (1) such sidechains are listed below:

Mol	Chain	Res	Type
1	A	243	GLN

5.3.3 RNA [i](#)

There are no RNA molecules in this entry.

5.4 Non-standard residues in protein, DNA, RNA chains [i](#)

There are no non-standard protein/DNA/RNA residues in this entry.

5.5 Carbohydrates [i](#)

There are no monosaccharides in this entry.

5.6 Ligand geometry [i](#)

11 ligands are modelled in this entry.

In the following table, the Counts columns list the number of bonds (or angles) for which Mogul statistics could be retrieved, the number of bonds (or angles) that are observed in the model and the number of bonds (or angles) that are defined in the Chemical Component Dictionary. The Link column lists molecule types, if any, to which the group is linked. The Z score for a bond length (or angle) is the number of standard deviations the observed value is removed from the expected value. A bond length (or angle) with $|Z| > 2$ is considered an outlier worth inspection. RMSZ is the root-mean-square of all Z scores of the bond lengths (or angles).

Mol	Type	Chain	Res	Link	Bond lengths			Bond angles		
					Counts	RMSZ	# Z > 2	Counts	RMSZ	# Z > 2
2	NAG	D	390	1	14,14,15	0.29	0	17,19,21	0.61	0
2	NAG	B	390	1	14,14,15	1.21	0	17,19,21	2.76	8 (47%)
2	NAG	C	391	1	14,14,15	1.68	3 (21%)	17,19,21	2.32	6 (35%)
2	NAG	A	391	1	14,14,15	1.72	3 (21%)	17,19,21	1.31	2 (11%)
2	NAG	D	392	1	14,14,15	0.29	0	17,19,21	0.61	0
2	NAG	A	390	1	14,14,15	1.65	3 (21%)	17,19,21	2.09	8 (47%)
2	NAG	D	391	1	14,14,15	1.30	1 (7%)	17,19,21	1.89	4 (23%)
2	NAG	C	390	1	14,14,15	1.53	3 (21%)	17,19,21	1.86	4 (23%)
3	PO4	B	391	-	4,4,4	0.94	0	6,6,6	0.69	0
3	PO4	B	392	-	4,4,4	0.70	0	6,6,6	0.73	0
2	NAG	C	392	1	14,14,15	1.38	2 (14%)	17,19,21	1.95	4 (23%)

In the following table, the Chirals column lists the number of chiral outliers, the number of chiral centers analysed, the number of these observed in the model and the number defined in the Chemical Component Dictionary. Similar counts are reported in the Torsion and Rings columns. '-' means no outliers of that kind were identified.

Mol	Type	Chain	Res	Link	Chirals	Torsions	Rings
2	NAG	D	390	1	-	2/6/23/26	0/1/1/1
2	NAG	B	390	1	-	2/6/23/26	0/1/1/1

Continued on next page...

Continued from previous page...

Mol	Type	Chain	Res	Link	Chirals	Torsions	Rings
2	NAG	C	391	1	-	2/6/23/26	0/1/1/1
2	NAG	A	391	1	-	1/6/23/26	0/1/1/1
2	NAG	D	392	1	-	4/6/23/26	0/1/1/1
2	NAG	A	390	1	-	0/6/23/26	0/1/1/1
2	NAG	D	391	1	-	0/6/23/26	0/1/1/1
2	NAG	C	390	1	-	2/6/23/26	0/1/1/1
2	NAG	C	392	1	-	0/6/23/26	0/1/1/1

All (15) bond length outliers are listed below:

Mol	Chain	Res	Type	Atoms	Z	Observed(Å)	Ideal(Å)
2	A	390	NAG	O5-C1	-3.59	1.38	1.43
2	A	391	NAG	O5-C1	-3.46	1.38	1.43
2	C	391	NAG	O3-C3	-3.18	1.35	1.43
2	A	391	NAG	O5-C5	-3.16	1.37	1.43
2	C	391	NAG	O5-C1	-3.08	1.38	1.43
2	A	390	NAG	O5-C5	-2.87	1.37	1.43
2	C	390	NAG	O5-C1	-2.73	1.39	1.43
2	C	390	NAG	O3-C3	-2.66	1.36	1.43
2	C	392	NAG	O5-C5	-2.29	1.38	1.43
2	C	392	NAG	O5-C1	-2.29	1.40	1.43
2	A	390	NAG	O3-C3	-2.17	1.37	1.43
2	D	391	NAG	O7-C7	-2.14	1.18	1.23
2	A	391	NAG	C2-N2	-2.11	1.42	1.46
2	C	390	NAG	O5-C5	-2.09	1.39	1.43
2	C	391	NAG	C7-N2	-2.02	1.27	1.34

All (36) bond angle outliers are listed below:

Mol	Chain	Res	Type	Atoms	Z	Observed(°)	Ideal(°)
2	B	390	NAG	C1-O5-C5	7.13	121.86	112.19
2	D	391	NAG	C6-C5-C4	-5.29	100.61	113.00
2	B	390	NAG	O5-C1-C2	4.77	118.83	111.29
2	C	391	NAG	C4-C3-C2	-4.69	104.14	111.02
2	C	392	NAG	C4-C3-C2	-4.61	104.26	111.02
2	C	390	NAG	C1-O5-C5	4.38	118.13	112.19
2	C	391	NAG	C2-N2-C7	-4.07	117.11	122.90
2	B	390	NAG	C2-N2-C7	3.84	128.37	122.90
2	C	391	NAG	C1-O5-C5	3.64	117.13	112.19
2	C	392	NAG	C3-C4-C5	-3.63	103.76	110.24
2	C	391	NAG	C1-C2-N2	3.62	116.67	110.49

Continued on next page...

Continued from previous page...

Mol	Chain	Res	Type	Atoms	Z	Observed(°)	Ideal(°)
2	A	390	NAG	C3-C4-C5	-3.48	104.03	110.24
2	C	390	NAG	O5-C1-C2	-3.07	106.44	111.29
2	C	390	NAG	O3-C3-C4	-3.06	103.28	110.35
2	C	391	NAG	C3-C4-C5	-2.90	105.06	110.24
2	D	391	NAG	C1-O5-C5	2.89	116.11	112.19
2	B	390	NAG	O7-C7-C8	-2.83	116.80	122.06
2	A	390	NAG	C4-C3-C2	2.82	115.15	111.02
2	B	390	NAG	C4-C3-C2	-2.80	106.92	111.02
2	A	390	NAG	O3-C3-C4	-2.79	103.91	110.35
2	A	390	NAG	C1-C2-N2	-2.74	105.81	110.49
2	C	392	NAG	O5-C5-C6	2.72	111.47	107.20
2	A	390	NAG	O5-C1-C2	-2.67	107.07	111.29
2	A	390	NAG	O4-C4-C5	2.67	115.93	109.30
2	A	391	NAG	C3-C4-C5	-2.65	105.51	110.24
2	C	392	NAG	C1-O5-C5	2.51	115.59	112.19
2	D	391	NAG	O3-C3-C4	-2.49	104.60	110.35
2	A	390	NAG	O7-C7-N2	2.46	126.48	121.95
2	A	391	NAG	C4-C3-C2	-2.44	107.44	111.02
2	C	391	NAG	O4-C4-C5	2.41	115.28	109.30
2	B	390	NAG	O4-C4-C5	2.35	115.14	109.30
2	B	390	NAG	C6-C5-C4	-2.20	107.85	113.00
2	C	390	NAG	C6-C5-C4	-2.16	107.94	113.00
2	D	391	NAG	O7-C7-C8	-2.15	118.06	122.06
2	B	390	NAG	O3-C3-C4	-2.04	105.62	110.35
2	A	390	NAG	C2-N2-C7	2.00	125.75	122.90

There are no chirality outliers.

All (13) torsion outliers are listed below:

Mol	Chain	Res	Type	Atoms
2	D	390	NAG	C8-C7-N2-C2
2	D	390	NAG	O7-C7-N2-C2
2	D	392	NAG	C8-C7-N2-C2
2	C	391	NAG	C1-C2-N2-C7
2	D	392	NAG	O7-C7-N2-C2
2	D	392	NAG	O5-C5-C6-O6
2	D	392	NAG	C4-C5-C6-O6
2	C	390	NAG	O5-C5-C6-O6
2	C	390	NAG	C4-C5-C6-O6
2	A	391	NAG	C4-C5-C6-O6
2	B	390	NAG	C4-C5-C6-O6
2	C	391	NAG	O5-C5-C6-O6

Continued on next page...

Continued from previous page...

Mol	Chain	Res	Type	Atoms
2	B	390	NAG	O5-C5-C6-O6

There are no ring outliers.

3 monomers are involved in 3 short contacts:

Mol	Chain	Res	Type	Clashes	Symm-Clashes
2	C	391	NAG	1	0
3	B	391	PO4	1	0
2	C	392	NAG	1	0

5.7 Other polymers [i](#)

There are no such residues in this entry.

5.8 Polymer linkage issues [i](#)

There are no chain breaks in this entry.

6 Fit of model and data

6.1 Protein, DNA and RNA chains

In the following table, the column labelled ‘#RSRZ> 2’ contains the number (and percentage) of RSRZ outliers, followed by percent RSRZ outliers for the chain as percentile scores relative to all X-ray entries and entries of similar resolution. The OWAB column contains the minimum, median, 95th percentile and maximum values of the occupancy-weighted average B-factor per residue. The column labelled ‘Q< 0.9’ lists the number of (and percentage) of residues with an average occupancy less than 0.9.

Mol	Chain	Analysed	<RSRZ>	#RSRZ>2	OWAB(Å ²)	Q<0.9
1	A	374/389 (96%)	-0.12	15 (4%) 38 36	20, 34, 63, 78	0
1	B	365/389 (93%)	-0.16	9 (2%) 57 55	19, 33, 53, 66	0
1	C	375/389 (96%)	-0.42	2 (0%) 91 90	18, 30, 50, 64	0
1	D	375/389 (96%)	-0.31	9 (2%) 59 56	17, 30, 54, 65	0
All	All	1489/1556 (95%)	-0.25	35 (2%) 59 56	17, 32, 54, 78	0

All (35) RSRZ outliers are listed below:

Mol	Chain	Res	Type	RSRZ
1	A	37	THR	6.4
1	D	53	SER	5.6
1	A	36	THR	5.0
1	A	33	ASN	4.8
1	A	34	GLN	4.5
1	D	51	ASP	4.0
1	B	14	ARG	3.8
1	A	301	VAL	3.7
1	C	51	ASP	3.5
1	A	56	PHE	3.4
1	A	38	GLU	3.4
1	B	380	PHE	3.3
1	B	374	TYR	3.2
1	A	35	ASN	3.2
1	A	317	ALA	3.1
1	A	175	ARG	2.9
1	A	174	PHE	2.9
1	B	309	ALA	2.9
1	D	318	VAL	2.8
1	A	374	TYR	2.5
1	D	308	SER	2.4

Continued on next page...

Continued from previous page...

Mol	Chain	Res	Type	RSRZ
1	B	56	PHE	2.4
1	B	171	VAL	2.3
1	B	175	ARG	2.3
1	D	380	PHE	2.3
1	B	40	PRO	2.3
1	D	304	SER	2.3
1	D	36	THR	2.2
1	A	315	ASN	2.2
1	D	50	LEU	2.2
1	A	302	ASP	2.2
1	A	176	ARG	2.2
1	D	319	PRO	2.2
1	C	34	GLN	2.0
1	B	176	ARG	2.0

6.2 Non-standard residues in protein, DNA, RNA chains [i](#)

There are no non-standard protein/DNA/RNA residues in this entry.

6.3 Carbohydrates [i](#)

There are no monosaccharides in this entry.

6.4 Ligands [i](#)

In the following table, the Atoms column lists the number of modelled atoms in the group and the number defined in the chemical component dictionary. The B-factors column lists the minimum, median, 95th percentile and maximum values of B factors of atoms in the group. The column labelled 'Q< 0.9' lists the number of atoms with occupancy less than 0.9.

Mol	Type	Chain	Res	Atoms	RSCC	RSR	B-factors(Å ²)	Q<0.9
2	NAG	D	392	14/15	0.71	0.38	70,74,78,78	0
2	NAG	C	391	14/15	0.84	0.12	31,36,41,48	0
2	NAG	B	390	14/15	0.90	0.11	34,40,49,52	0
2	NAG	C	392	14/15	0.90	0.30	53,61,67,67	0
2	NAG	D	391	14/15	0.92	0.09	31,39,47,51	0
2	NAG	C	390	14/15	0.92	0.11	41,46,52,58	0
2	NAG	A	390	14/15	0.92	0.10	39,44,52,54	0
2	NAG	A	391	14/15	0.93	0.10	30,39,46,47	0
2	NAG	D	390	14/15	0.94	0.13	43,52,57,58	0

Continued on next page...

Continued from previous page...

Mol	Type	Chain	Res	Atoms	RSCC	RSR	B-factors(\AA^2)	Q<0.9
3	PO4	B	391	5/5	0.96	0.10	40,42,46,46	0
3	PO4	B	392	5/5	0.97	0.07	40,41,49,50	0

6.5 Other polymers [i](#)

There are no such residues in this entry.