



Full wwPDB X-ray Structure Validation Report ⓘ

May 11, 2026 – 04:10 PM EDT

PDB ID : 9NZE / pdb_00009nze
Title : De novo designed exatecan-binding protein, EPIC
Authors : Polizzi, N.F.
Deposited on : 2025-03-31
Resolution : 1.96 Å(reported)

This is a Full wwPDB X-ray Structure Validation Report for a publicly released PDB entry.

We welcome your comments at validation@mail.wwpdb.org

A user guide is available at

<https://www.wwpdb.org/validation/2017/XrayValidationReportHelp>

with specific help available everywhere you see the ⓘ symbol.

The types of validation reports are described at

<http://www.wwpdb.org/validation/2017/FAQs#types>.

The following versions of software and data (see [references ⓘ](#)) were used in the production of this report:

MolProbity : 4-5-2 with Phenix2.0
Mogul : 2022.3.0, CSD as543be (2022)
Xtriage (Phenix) : 2.0
EDS : 3.0
Buster-report : wwPDB partial adaption of 1.1.7 (2018)
Percentile statistics : 20250101.v01 (using entries in the PDB archive January 1st 2025)
CCP4 : 9.0.010 (Gargrove)
Density-Fitness : 1.0.12
Ideal geometry (proteins) : Engh & Huber (2001)
Ideal geometry (DNA, RNA) : Parkinson et al. (1996)
Validation Pipeline (wwPDB-VP) : 2.49

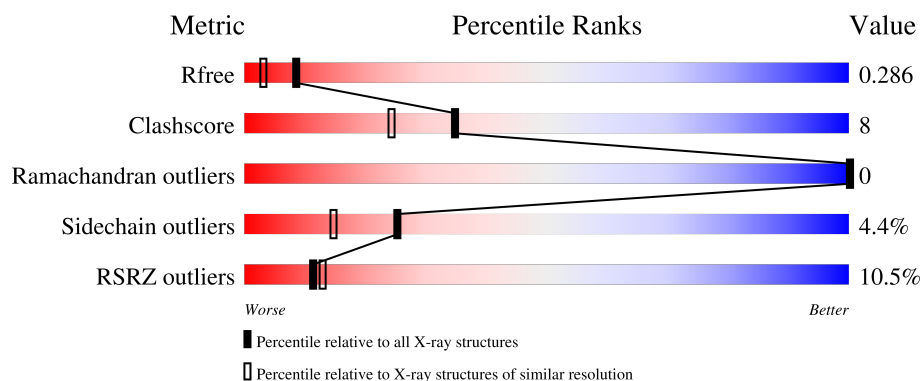
1 Overall quality at a glance

The following experimental techniques were used to determine the structure:

X-RAY DIFFRACTION

The reported resolution of this entry is 1.96 Å.

Percentile scores (ranging between 0-100) for global validation metrics of the entry are shown in the following graphic. The table shows the number of entries on which the scores are based.



Metric	Whole archive (#Entries)	Similar resolution (#Entries, resolution range(Å))
R_{free}	180053	3494 (1.96-1.96)
Clashscore	190562	3612 (1.96-1.96)
Ramachandran outliers	187476	3587 (1.96-1.96)
Sidechain outliers	187428	3587 (1.96-1.96)
RSRZ outliers	180081	3495 (1.96-1.96)

The table below summarises the geometric issues observed across the polymeric chains and their fit to the electron density. The red, orange, yellow and green segments of the lower bar indicate the fraction of residues that contain outliers for ≥ 3 , 2, 1 and 0 types of geometric quality criteria respectively. A grey segment represents the fraction of residues that are not modelled. The numeric value for each fraction is indicated below the corresponding segment, with a dot representing fractions $\leq 5\%$. The upper red bar (where present) indicates the fraction of residues that have poor fit to the electron density. The numeric value is given above the bar.

Mol	Chain	Length	Quality of chain
1	A	148	<div> <div>13%</div> <div> <div></div> <div>88%</div> <div>10%</div> <div>..</div> </div> </div>
1	B	148	<div> <div>8%</div> <div> <div></div> <div>78%</div> <div>20%</div> <div>.</div> </div> </div>
1	D	148	<div> <div>4%</div> <div> <div></div> <div>95%</div> <div>5%</div> </div> </div>
1	F	148	<div> <div>17%</div> <div> <div></div> <div>73%</div> <div>25%</div> <div>.</div> </div> </div>

The following table lists non-polymeric compounds, carbohydrate monomers and non-standard

residues in protein, DNA, RNA chains that are outliers for geometric or electron-density-fit criteria:

Mol	Type	Chain	Res	Chirality	Geometry	Clashes	Electron density
7	PG4	D	202	-	-	X	-

2 Entry composition [i](#)

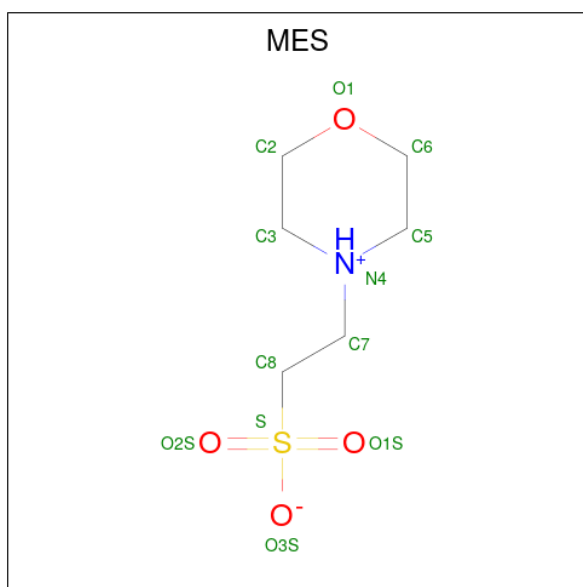
There are 8 unique types of molecules in this entry. The entry contains 10180 atoms, of which 5123 are hydrogens and 0 are deuteriums.

In the tables below, the ZeroOcc column contains the number of atoms modelled with zero occupancy, the AltConf column contains the number of residues with at least one atom in alternate conformation and the Trace column contains the number of residues modelled with at most 2 atoms.

- Molecule 1 is a protein called De novo designed protein, EPIC.

Mol	Chain	Residues	Atoms						ZeroOcc	AltConf	Trace
1	A	148	Total	C	H	N	O	S	0	0	0
			2409	750	1244	176	237	2			
1	B	148	Total	C	H	N	O	S	0	0	0
			2399	748	1239	175	235	2			
1	D	148	Total	C	H	N	O	S	0	0	0
			2410	753	1246	174	235	2			
1	F	148	Total	C	H	N	O	S	0	0	0
			2424	753	1256	178	235	2			

- Molecule 2 is 2-(N-MORPHOLINO)-ETHANESULFONIC ACID (CCD ID: MES) (formula: $C_6H_{13}NO_4S$).



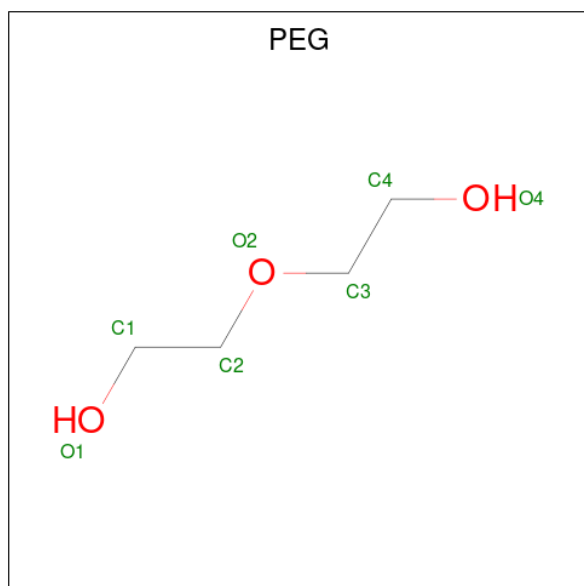
Mol	Chain	Residues	Atoms					ZeroOcc	AltConf
2	A	1	Total	C	H	O	S	0	0
			10	2	4	3	1		
2	D	1	Total	C	H	O	S	0	0
			10	2	4	3	1		

Continued on next page...

Continued from previous page...

Mol	Chain	Residues	Atoms					ZeroOcc	AltConf
2	F	1	Total	C	H	O	S	0	0
			10	2	4	3	1		

- Molecule 3 is DI(HYDROXYETHYL)ETHER (CCD ID: PEG) (formula: $C_4H_{10}O_3$).

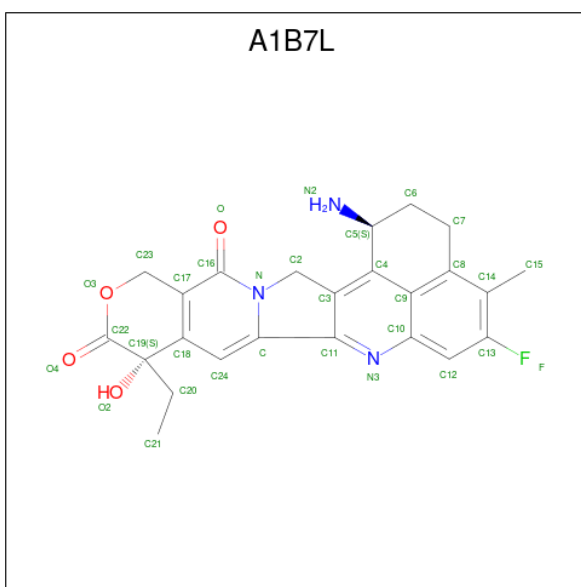


Mol	Chain	Residues	Atoms				ZeroOcc	AltConf
3	A	1	Total	C	H	O	0	0
			17	4	10	3		

- Molecule 4 is ZINC ION (CCD ID: ZN) (formula: Zn).

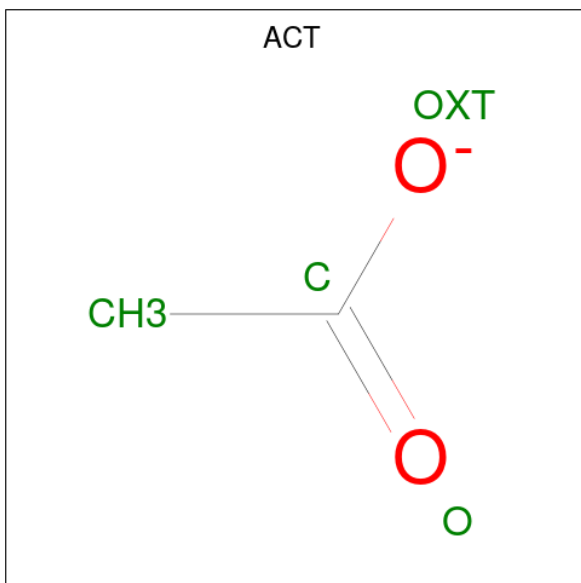
Mol	Chain	Residues	Atoms		ZeroOcc	AltConf
4	A	3	Total	Zn	0	0
			3	3		
4	B	3	Total	Zn	0	0
			3	3		
4	D	4	Total	Zn	0	0
			4	4		
4	F	2	Total	Zn	0	0
			2	2		

- Molecule 5 is exatecan (CCD ID: A1B7L) (formula: $C_{24}H_{22}FN_3O_4$) (labeled as "Ligand of Interest" by depositor).



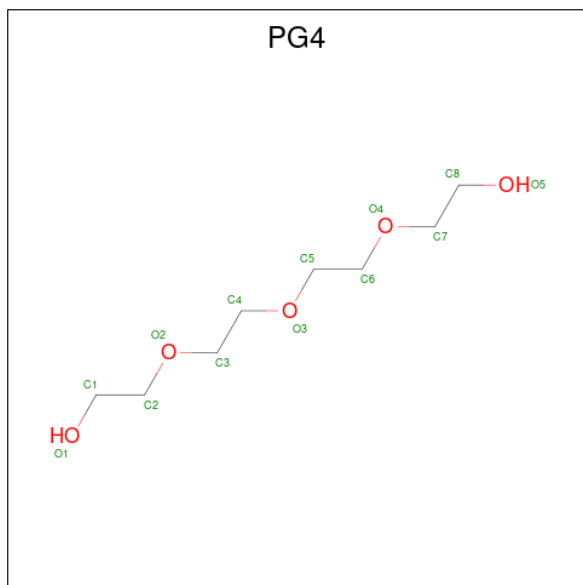
Mol	Chain	Residues	Atoms						ZeroOcc	AltConf
5	A	1	Total	C	F	H	N	O	0	0
			55	24	1	23	3	4		
5	B	1	Total	C	F	H	N	O	0	0
			55	24	1	23	3	4		
5	D	1	Total	C	F	H	N	O	0	0
			55	24	1	23	3	4		
5	F	1	Total	C	F	H	N	O	0	0
			55	24	1	23	3	4		

- Molecule 6 is ACETATE ION (CCD ID: ACT) (formula: $C_2H_3O_2$).



Mol	Chain	Residues	Atoms				ZeroOcc	AltConf
6	B	1	Total	C	H	O	0	0
			7	2	3	2		
6	D	1	Total	C	H	O	0	0
			7	2	3	2		

- Molecule 7 is TETRAETHYLENE GLYCOL (CCD ID: PG4) (formula: $C_8H_{18}O_5$).



Mol	Chain	Residues	Atoms				ZeroOcc	AltConf
7	D	1	Total	C	H	O	0	0
			31	8	18	5		


- Molecule 8 is water.

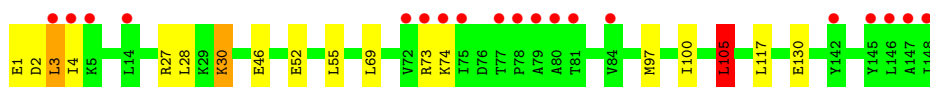
Mol	Chain	Residues	Atoms		ZeroOcc	AltConf
8	A	53	Total	O	0	0
			53	53		
8	B	45	Total	O	0	0
			45	45		
8	D	76	Total	O	0	0
			76	76		
8	F	40	Total	O	0	0
			40	40		

3 Residue-property plots [i](#)


These plots are drawn for all protein, RNA, DNA and oligosaccharide chains in the entry. The first graphic for a chain summarises the proportions of the various outlier classes displayed in the second graphic. The second graphic shows the sequence view annotated by issues in geometry and electron density. Residues are color-coded according to the number of geometric quality criteria for which they contain at least one outlier: green = 0, yellow = 1, orange = 2 and red = 3 or more. A red dot above a residue indicates a poor fit to the electron density ($RSRZ > 2$). Stretches of 2 or more consecutive residues without any outlier are shown as a green connector. Residues present in the sample, but not in the model, are shown in grey.

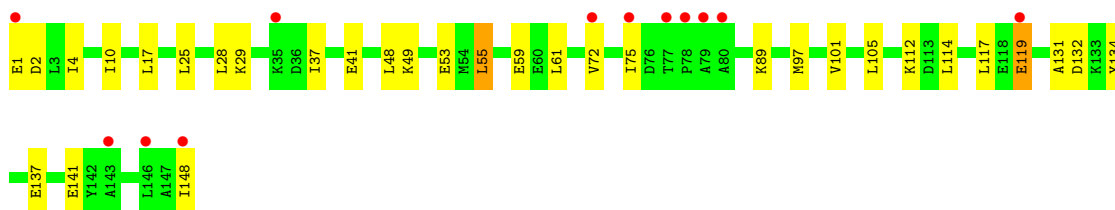
- Molecule 1: De novo designed protein, EPIC

Chain A: 



- Molecule 1: De novo designed protein, EPIC

Chain B: 



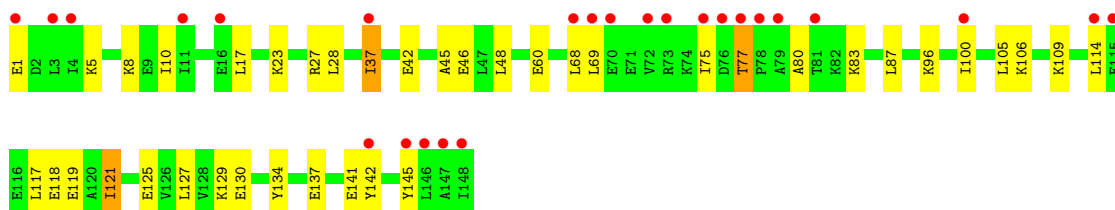
- Molecule 1: De novo designed protein, EPIC

Chain D: 



- Molecule 1: De novo designed protein, EPIC

Chain F: 



4 Data and refinement statistics

Property	Value	Source
Space group	P 21 21 21	Depositor
Cell constants a, b, c, α , β , γ	91.03Å 93.68Å 94.33Å 90.00° 90.00° 90.00°	Depositor
Resolution (Å)	32.64 – 1.96 32.64 – 1.96	Depositor EDS
% Data completeness (in resolution range)	97.4 (32.64-1.96) 97.3 (32.64-1.96)	Depositor EDS
R_{merge}	0.11	Depositor
R_{sym}	0.12	Depositor
$\langle I/\sigma(I) \rangle$ ¹	1.42 (at 1.95Å)	Xtriage
Refinement program	PHENIX 1.20.1_4487	Depositor
R, R_{free}	0.250 , 0.286 0.250 , 0.286	Depositor DCC
R_{free} test set	2773 reflections (4.71%)	wwPDB-VP
Wilson B-factor (Å ²)	30.3	Xtriage
Anisotropy	0.259	Xtriage
Bulk solvent k_{sol} (e/Å ³), B_{sol} (Å ²)	0.35 , 28.3	EDS
L-test for twinning ²	$\langle L \rangle = 0.44$, $\langle L^2 \rangle = 0.26$	Xtriage
Estimated twinning fraction	0.048 for -h,l,k 0.034 for -l,-k,-h 0.034 for k,h,-l 0.016 for k,l,h 0.016 for l,h,k	Xtriage
F_o, F_c correlation	0.93	EDS
Total number of atoms	10180	wwPDB-VP
Average B, all atoms (Å ²)	44.0	wwPDB-VP

Xtriage's analysis on translational NCS is as follows: *The largest off-origin peak in the Patterson function is 16.83% of the height of the origin peak. No significant pseudotranslation is detected.*

¹Intensities estimated from amplitudes.

²Theoretical values of $\langle |L| \rangle$, $\langle L^2 \rangle$ for acentric reflections are 0.5, 0.333 respectively for untwinned datasets, and 0.375, 0.2 for perfectly twinned datasets.

5 Model quality [i](#)

5.1 Standard geometry [i](#)

Bond lengths and bond angles in the following residue types are not validated in this section: ACT, MES, ZN, PEG, PG4, A1B7L

The Z score for a bond length (or angle) is the number of standard deviations the observed value is removed from the expected value. A bond length (or angle) with $|Z| > 5$ is considered an outlier worth inspection. RMSZ is the root-mean-square of all Z scores of the bond lengths (or angles).

Mol	Chain	Bond lengths		Bond angles	
		RMSZ	$\# Z > 5$	RMSZ	$\# Z > 5$
1	A	0.31	0/1168	0.57	1/1565 (0.1%)
1	B	0.33	0/1163	0.56	0/1559
1	D	0.31	0/1167	0.62	0/1563
1	F	0.31	0/1171	0.58	0/1567
All	All	0.31	0/4669	0.58	1/6254 (0.0%)

There are no bond length outliers.

All (1) bond angle outliers are listed below:

Mol	Chain	Res	Type	Atoms	Z	Observed(°)	Ideal(°)
1	A	105	LEU	CD1-CG-CD2	5.19	122.22	110.80

There are no chirality outliers.

There are no planarity outliers.

5.2 Too-close contacts [i](#)

In the following table, the Non-H and H(model) columns list the number of non-hydrogen atoms and hydrogen atoms in the chain respectively. The H(added) column lists the number of hydrogen atoms added and optimized by MolProbity. The Clashes column lists the number of clashes within the asymmetric unit, whereas Symm-Clashes lists symmetry-related clashes.

Mol	Chain	Non-H	H(model)	H(added)	Clashes	Symm-Clashes
1	A	1165	1244	1232	12	0
1	B	1160	1239	1223	20	0
1	D	1164	1246	1228	12	0
1	F	1168	1256	1248	27	0
2	A	6	4	2	0	0
2	D	6	4	2	0	0

Continued on next page...

Continued from previous page...

Mol	Chain	Non-H	H(model)	H(added)	Clashes	Symm-Clashes
2	F	6	4	2	0	0
3	A	7	10	10	1	0
4	A	3	0	0	0	0
4	B	3	0	0	0	0
4	D	4	0	0	0	0
4	F	2	0	0	0	0
5	A	32	23	0	1	0
5	B	32	23	0	1	0
5	D	32	23	0	3	0
5	F	32	23	0	0	0
6	B	4	3	3	0	0
6	D	4	3	3	0	0
7	D	13	18	18	13	0
8	A	53	0	0	0	0
8	B	45	0	0	1	0
8	D	76	0	0	2	0
8	F	40	0	0	1	0
All	All	5057	5123	4971	74	0

The all-atom clashscore is defined as the number of clashes found per 1000 atoms (including hydrogen atoms). The all-atom clashscore for this structure is 8.

All (74) close contacts within the same asymmetric unit are listed below, sorted by their clash magnitude.

Atom-1	Atom-2	Interatomic distance (Å)	Clash overlap (Å)
7:D:202:PG4:H12	1:F:45:ALA:HB1	1.38	1.03
1:D:52:GLU:HB2	7:D:202:PG4:H21	1.40	1.02
1:D:53:GLU:OE1	8:D:301:HOH:O	1.87	0.91
7:D:202:PG4:H71	1:F:42:GLU:HG2	1.57	0.87
7:D:202:PG4:C1	1:F:45:ALA:HB1	2.05	0.86
1:F:75:ILE:HG22	1:F:77:THR:HG22	1.66	0.78
1:F:37:ILE:HG12	1:F:114:LEU:HD11	1.73	0.71
1:B:148:ILE:HG22	1:B:148:ILE:O	1.93	0.67
1:D:73:ARG:NH2	1:D:88:GLU:OE2	2.32	0.64
1:A:30:LYS:N	1:A:30:LYS:HD3	2.13	0.63
1:D:52:GLU:CB	7:D:202:PG4:H21	2.24	0.62
1:B:132:ASP:OD1	5:B:202:A1B7L:N2	2.33	0.62
1:F:130:GLU:HG2	1:F:134:TYR:CE2	2.34	0.61
7:D:202:PG4:O2	7:D:202:PG4:H82	2.01	0.60
1:D:53:GLU:HA	7:D:202:PG4:H42	1.84	0.60
1:A:69:LEU:O	1:A:73:ARG:HG3	2.02	0.60

Continued on next page...

Continued from previous page...

Atom-1	Atom-2	Interatomic distance (Å)	Clash overlap (Å)
1:B:119:GLU:HG3	8:B:302:HOH:O	2.01	0.59
1:B:137:GLU:OE2	1:B:141:GLU:OE2	2.21	0.59
1:F:83:LYS:HB3	1:F:145:TYR:HE1	1.67	0.58
1:A:52:GLU:OE2	1:A:105:LEU:CD2	2.51	0.58
1:B:97:MET:CE	1:B:134:TYR:HB2	2.33	0.58
1:F:28:LEU:HD11	1:F:117:LEU:HD11	1.87	0.56
1:F:27:ARG:NH2	1:F:46:GLU:OE2	2.35	0.56
1:A:52:GLU:HG2	1:A:105:LEU:HD11	1.88	0.54
1:F:106:LYS:HA	1:F:106:LYS:HE2	1.89	0.54
1:D:52:GLU:C	7:D:202:PG4:H32	2.33	0.53
1:B:55:LEU:HD13	1:B:101:VAL:CG1	2.39	0.53
1:B:119:GLU:OE2	5:D:204:A1B7L:N2	2.41	0.53
1:F:130:GLU:HG2	1:F:134:TYR:HE2	1.74	0.53
1:F:23:LYS:HE3	8:F:318:HOH:O	2.09	0.52
7:D:202:PG4:H31	8:D:368:HOH:O	2.08	0.52
1:F:96:LYS:HD3	1:F:134:TYR:CE1	2.44	0.52
1:D:49:LYS:O	1:D:53:GLU:HG3	2.10	0.51
1:B:4:ILE:H	1:B:4:ILE:HD12	1.74	0.51
1:B:97:MET:HE2	1:B:134:TYR:HB2	1.91	0.51
1:A:97:MET:HE2	5:A:206:A1B7L:C12	2.41	0.50
1:A:27:ARG:HH12	3:A:202:PEG:H32	1.76	0.49
1:F:8:LYS:HB2	1:F:142:TYR:OH	2.12	0.49
1:B:25:LEU:HG	1:B:29:LYS:HE2	1.94	0.49
1:B:37:ILE:O	1:B:41:GLU:HG3	2.12	0.49
1:D:56:VAL:HG21	7:D:202:PG4:H41	1.95	0.48
1:F:83:LYS:HB3	1:F:145:TYR:CE1	2.48	0.48
1:A:52:GLU:OE2	1:A:105:LEU:HD22	2.13	0.48
1:F:75:ILE:CG2	1:F:77:THR:HG22	2.40	0.48
1:F:137:GLU:O	1:F:141:GLU:HG2	2.14	0.48
1:B:1:GLU:N	1:B:4:ILE:HD13	2.29	0.47
1:F:68:LEU:HD12	1:F:87:LEU:CD1	2.44	0.47
1:D:97:MET:CE	5:D:204:A1B7L:C12	2.92	0.47
1:F:77:THR:HG23	1:F:80:ALA:H	1.79	0.47
1:D:53:GLU:N	7:D:202:PG4:H32	2.29	0.46
1:B:28:LEU:HD11	1:B:117:LEU:HD11	1.98	0.46
7:D:202:PG4:H82	7:D:202:PG4:C2	2.46	0.46
1:B:48:LEU:HD23	1:B:105:LEU:HD23	1.97	0.46
1:B:72:VAL:HA	1:B:75:ILE:HD12	1.97	0.46
1:F:125:GLU:O	1:F:129:LYS:HD3	2.17	0.45
1:B:1:GLU:HG3	1:B:2:ASP:H	1.81	0.45
1:F:10:ILE:HD13	1:F:60:GLU:HG2	1.99	0.45

Continued on next page...

Continued from previous page...

Atom-1	Atom-2	Interatomic distance (Å)	Clash overlap (Å)
1:A:27:ARG:NH2	1:A:46:GLU:OE2	2.43	0.45
1:F:100:ILE:HG23	1:F:127:LEU:HD22	1.99	0.45
1:F:68:LEU:CD1	1:F:87:LEU:HD11	2.48	0.44
1:D:49:LYS:O	7:D:202:PG4:H22	2.17	0.44
1:F:1:GLU:O	1:F:5:LYS:HB2	2.17	0.44
1:B:10:ILE:HG21	1:B:61:LEU:HB2	1.98	0.44
1:A:2:ASP:OD1	1:A:3:LEU:HD22	2.18	0.44
1:F:28:LEU:HG	1:F:121:ILE:HD11	1.99	0.43
1:F:48:LEU:HD23	1:F:105:LEU:HD23	2.01	0.43
1:B:97:MET:HE1	1:B:131:ALA:O	2.19	0.43
1:B:148:ILE:O	1:B:148:ILE:CG2	2.64	0.42
1:A:100:ILE:HD11	1:A:130:GLU:HG2	2.02	0.41
1:D:97:MET:HE3	5:D:204:A1B7L:C12	2.50	0.41
1:F:105:LEU:HD22	1:F:109:LYS:HE2	2.02	0.41
1:A:4:ILE:H	1:A:4:ILE:HD12	1.85	0.41
1:A:28:LEU:HD11	1:A:117:LEU:HD11	2.03	0.41
1:B:49:LYS:O	1:B:53:GLU:HG3	2.22	0.40

There are no symmetry-related clashes.

5.3 Torsion angles ⓘ

5.3.1 Protein backbone ⓘ

In the following table, the Percentiles column shows the percent Ramachandran outliers of the chain as a percentile score with respect to all X-ray entries followed by that with respect to entries of similar resolution.

The Analysed column shows the number of residues for which the backbone conformation was analysed, and the total number of residues.

Mol	Chain	Analysed	Favoured	Allowed	Outliers	Percentiles	
1	A	146/148 (99%)	145 (99%)	1 (1%)	0	100	100
1	B	146/148 (99%)	145 (99%)	1 (1%)	0	100	100
1	D	146/148 (99%)	146 (100%)	0	0	100	100
1	F	146/148 (99%)	145 (99%)	1 (1%)	0	100	100
All	All	584/592 (99%)	581 (100%)	3 (0%)	0	100	100

There are no Ramachandran outliers to report.

5.3.2 Protein sidechains ⓘ

In the following table, the Percentiles column shows the percent sidechain outliers of the chain as a percentile score with respect to all X-ray entries followed by that with respect to entries of similar resolution.

The Analysed column shows the number of residues for which the sidechain conformation was analysed, and the total number of residues.

Mol	Chain	Analysed	Rotameric	Outliers	Percentiles	
1	A	121/127 (95%)	115 (95%)	6 (5%)	22	11
1	B	119/127 (94%)	112 (94%)	7 (6%)	18	7
1	D	118/127 (93%)	117 (99%)	1 (1%)	73	74
1	F	122/127 (96%)	115 (94%)	7 (6%)	18	8
All	All	480/508 (94%)	459 (96%)	21 (4%)	25	15

All (21) residues with a non-rotameric sidechain are listed below:

Mol	Chain	Res	Type
1	A	1	GLU
1	A	3	LEU
1	A	30	LYS
1	A	55	LEU
1	A	74	LYS
1	A	105	LEU
1	B	17	LEU
1	B	55	LEU
1	B	59	GLU
1	B	89	LYS
1	B	112	LYS
1	B	114	LEU
1	B	119	GLU
1	D	71	GLU
1	F	17	LEU
1	F	37	ILE
1	F	69	LEU
1	F	77	THR
1	F	118	GLU
1	F	119	GLU
1	F	121	ILE

Sometimes sidechains can be flipped to improve hydrogen bonding and reduce clashes. All (3) such sidechains are listed below:

Mol	Chain	Res	Type
1	A	51	GLN
1	B	51	GLN
1	D	51	GLN

5.3.3 RNA [i](#)

There are no RNA molecules in this entry.

5.4 Non-standard residues in protein, DNA, RNA chains [i](#)

There are no non-standard protein/DNA/RNA residues in this entry.

5.5 Carbohydrates [i](#)

There are no oligosaccharides in this entry.

5.6 Ligand geometry [i](#)

Of 23 ligands modelled in this entry, 12 are monoatomic - leaving 11 for Mogul analysis.

In the following table, the Counts columns list the number of bonds (or angles) for which Mogul statistics could be retrieved, the number of bonds (or angles) that are observed in the model and the number of bonds (or angles) that are defined in the Chemical Component Dictionary. The Link column lists molecule types, if any, to which the group is linked. The Z score for a bond length (or angle) is the number of standard deviations the observed value is removed from the expected value. A bond length (or angle) with $|Z| > 2$ is considered an outlier worth inspection. RMSZ is the root-mean-square of all Z scores of the bond lengths (or angles).

Mol	Type	Chain	Res	Link	Bond lengths			Bond angles		
					Counts	RMSZ	# $ Z > 2$	Counts	RMSZ	# $ Z > 2$
2	MES	F	201	-	4,5,12	0.94	0	7,7,16	1.42	1 (14%)
5	A1B7L	B	202	-	31,37,37	4.62	20 (64%)	29,60,60	3.20	14 (48%)
2	MES	A	201	-	4,5,12	1.06	0	7,7,16	1.43	1 (14%)
2	MES	D	201	-	4,5,12	1.21	1 (25%)	7,7,16	2.17	1 (14%)
7	PG4	D	202	-	12,12,12	0.24	0	11,11,11	0.47	0
3	PEG	A	202	-	6,6,6	0.18	0	5,5,5	0.19	0
6	ACT	B	201	-	3,3,3	0.86	0	3,3,3	1.53	1 (33%)
5	A1B7L	F	202	-	31,37,37	4.58	17 (54%)	29,60,60	2.98	12 (41%)
5	A1B7L	D	204	-	31,37,37	4.66	17 (54%)	29,60,60	3.17	12 (41%)
5	A1B7L	A	206	-	31,37,37	4.60	19 (61%)	29,60,60	3.39	14 (48%)

Mol	Type	Chain	Res	Link	Bond lengths			Bond angles		
					Counts	RMSZ	# Z > 2	Counts	RMSZ	# Z > 2
6	ACT	D	203	-	3,3,3	0.92	0	3,3,3	1.49	1 (33%)

In the following table, the Chirals column lists the number of chiral outliers, the number of chiral centers analysed, the number of these observed in the model and the number defined in the Chemical Component Dictionary. Similar counts are reported in the Torsion and Rings columns. '-' means no outliers of that kind were identified.

Mol	Type	Chain	Res	Link	Chirals	Torsions	Rings
2	MES	F	201	-	-	0/3/3/14	-
5	A1B7L	B	202	-	-	0/3/37/37	0/6/6/6
2	MES	A	201	-	-	3/3/3/14	-
2	MES	D	201	-	-	0/3/3/14	-
7	PG4	D	202	-	-	7/10/10/10	-
3	PEG	A	202	-	-	1/4/4/4	-
5	A1B7L	F	202	-	-	0/3/37/37	0/6/6/6
5	A1B7L	D	204	-	-	0/3/37/37	0/6/6/6
5	A1B7L	A	206	-	-	0/3/37/37	0/6/6/6

All (74) bond length outliers are listed below:

Mol	Chain	Res	Type	Atoms	Z	Observed(Å)	Ideal(Å)
5	D	204	A1B7L	C17-C18	10.49	1.53	1.36
5	B	202	A1B7L	C17-C18	10.25	1.53	1.36
5	F	202	A1B7L	C17-C18	9.95	1.52	1.36
5	A	206	A1B7L	C17-C18	9.85	1.52	1.36
5	D	204	A1B7L	O4-C22	9.04	1.40	1.20
5	B	202	A1B7L	O4-C22	9.01	1.40	1.20
5	A	206	A1B7L	O4-C22	8.82	1.40	1.20
5	F	202	A1B7L	O4-C22	8.67	1.39	1.20
5	F	202	A1B7L	O-C16	8.41	1.40	1.23
5	A	206	A1B7L	C10-N3	8.30	1.50	1.37
5	A	206	A1B7L	C11-C3	-8.26	1.27	1.41
5	D	204	A1B7L	O-C16	8.21	1.39	1.23
5	D	204	A1B7L	C10-N3	8.12	1.50	1.37
5	A	206	A1B7L	O-C16	8.11	1.39	1.23
5	B	202	A1B7L	C11-C3	-7.99	1.27	1.41
5	B	202	A1B7L	O-C16	7.98	1.39	1.23
5	F	202	A1B7L	C11-C3	-7.96	1.28	1.41
5	B	202	A1B7L	C10-N3	7.96	1.50	1.37
5	D	204	A1B7L	C11-C3	-7.82	1.28	1.41
5	D	204	A1B7L	C4-C9	-7.43	1.30	1.43
5	F	202	A1B7L	C10-N3	7.37	1.49	1.37

Continued on next page...

Continued from previous page...

Mol	Chain	Res	Type	Atoms	Z	Observed(Å)	Ideal(Å)
5	A	206	A1B7L	C4-C9	-6.96	1.31	1.43
5	F	202	A1B7L	C4-C9	-6.47	1.31	1.43
5	D	204	A1B7L	O3-C22	6.42	1.42	1.34
5	F	202	A1B7L	C2-N	-6.35	1.41	1.47
5	B	202	A1B7L	C4-C9	-6.24	1.32	1.43
5	B	202	A1B7L	O3-C22	6.22	1.42	1.34
5	A	206	A1B7L	O3-C22	6.20	1.42	1.34
5	D	204	A1B7L	C2-N	-6.13	1.41	1.47
5	A	206	A1B7L	C12-C10	-6.13	1.32	1.41
5	F	202	A1B7L	C12-C10	-6.11	1.32	1.41
5	A	206	A1B7L	C2-N	-5.88	1.42	1.47
5	B	202	A1B7L	C11-C	-5.84	1.39	1.46
5	F	202	A1B7L	O3-C22	5.83	1.41	1.34
5	B	202	A1B7L	C2-N	-5.66	1.42	1.47
5	B	202	A1B7L	C12-C10	-5.59	1.33	1.41
5	D	204	A1B7L	C12-C10	-5.48	1.33	1.41
5	F	202	A1B7L	C24-C18	5.36	1.57	1.43
5	D	204	A1B7L	C11-C	-5.29	1.40	1.46
5	A	206	A1B7L	C24-C18	5.19	1.56	1.43
5	B	202	A1B7L	C24-C18	4.92	1.56	1.43
5	F	202	A1B7L	C11-C	-4.66	1.40	1.46
5	D	204	A1B7L	C24-C18	4.62	1.55	1.43
5	B	202	A1B7L	C8-C14	4.28	1.44	1.38
5	A	206	A1B7L	C11-C	-4.12	1.41	1.46
5	F	202	A1B7L	C8-C9	-4.05	1.37	1.43
5	B	202	A1B7L	C8-C9	-3.96	1.37	1.43
5	F	202	A1B7L	C8-C14	3.91	1.44	1.38
5	D	204	A1B7L	C2-C3	3.90	1.55	1.50
5	D	204	A1B7L	C12-C13	3.46	1.41	1.35
5	F	202	A1B7L	C2-C3	3.45	1.54	1.50
5	A	206	A1B7L	C2-C3	3.29	1.54	1.50
5	A	206	A1B7L	C8-C14	3.28	1.43	1.38
5	A	206	A1B7L	C8-C9	-3.21	1.38	1.43
5	B	202	A1B7L	C12-C13	3.15	1.41	1.35
5	D	204	A1B7L	C8-C9	-3.14	1.38	1.43
5	F	202	A1B7L	C12-C13	3.00	1.40	1.35
5	B	202	A1B7L	C2-C3	2.97	1.54	1.50
5	D	204	A1B7L	C8-C14	2.92	1.42	1.38
5	A	206	A1B7L	C12-C13	2.85	1.40	1.35
5	D	204	A1B7L	C16-C17	2.82	1.51	1.44
5	F	202	A1B7L	C16-C17	2.75	1.51	1.44
5	A	206	A1B7L	C16-C17	2.75	1.51	1.44

Continued on next page...

Continued from previous page...

Mol	Chain	Res	Type	Atoms	Z	Observed(Å)	Ideal(Å)
5	B	202	A1B7L	C16-C17	2.41	1.50	1.44
5	D	204	A1B7L	C6-C7	-2.39	1.47	1.52
5	A	206	A1B7L	C24-C	2.31	1.41	1.37
5	B	202	A1B7L	C9-C10	2.23	1.46	1.42
5	F	202	A1B7L	C9-C10	2.21	1.46	1.42
2	D	201	MES	O2S-S	2.20	1.51	1.45
5	A	206	A1B7L	C16-N	2.07	1.43	1.40
5	B	202	A1B7L	O3-C23	-2.04	1.41	1.45
5	A	206	A1B7L	C6-C7	-2.01	1.48	1.52
5	B	202	A1B7L	O2-C19	-2.01	1.39	1.42
5	B	202	A1B7L	C24-C	2.00	1.40	1.37

All (57) bond angle outliers are listed below:

Mol	Chain	Res	Type	Atoms	Z	Observed(°)	Ideal(°)
5	A	206	A1B7L	C2-N-C	-10.52	108.22	113.10
5	D	204	A1B7L	C2-N-C	-9.00	108.93	113.10
5	B	202	A1B7L	C-C11-N3	-7.50	120.61	125.32
5	B	202	A1B7L	C2-N-C	-7.47	109.63	113.10
5	F	202	A1B7L	C-C11-N3	-7.29	120.75	125.32
5	D	204	A1B7L	C-C11-N3	-6.84	121.03	125.32
5	A	206	A1B7L	C-C11-N3	-6.69	121.13	125.32
5	F	202	A1B7L	C2-N-C	-6.36	110.15	113.10
5	B	202	A1B7L	C12-C13-C14	-6.34	119.55	124.52
5	A	206	A1B7L	C12-C13-C14	-6.24	119.63	124.52
5	F	202	A1B7L	C12-C13-C14	-6.16	119.69	124.52
5	B	202	A1B7L	C12-C10-C9	6.05	126.73	120.40
5	D	204	A1B7L	C12-C13-C14	-5.94	119.87	124.52
5	D	204	A1B7L	C7-C8-C14	-5.74	113.89	123.15
5	F	202	A1B7L	C12-C10-C9	5.49	126.14	120.40
5	A	206	A1B7L	C12-C10-C9	5.44	126.09	120.40
5	A	206	A1B7L	C7-C8-C14	-5.40	114.44	123.15
5	F	202	A1B7L	C7-C8-C14	-5.37	114.48	123.15
2	D	201	MES	O1S-S-C8	4.93	114.18	106.73
5	B	202	A1B7L	C7-C8-C14	-4.49	115.91	123.15
5	D	204	A1B7L	C12-C10-C9	3.75	124.32	120.40
5	B	202	A1B7L	C9-C10-N3	-3.74	115.17	122.45
5	D	204	A1B7L	C9-C10-N3	-3.57	115.50	122.45
5	D	204	A1B7L	C3-C11-C	3.48	110.36	108.38
5	B	202	A1B7L	C11-C-N	3.48	109.03	107.06
5	A	206	A1B7L	C9-C10-N3	-3.48	115.68	122.45
5	F	202	A1B7L	C9-C10-N3	-3.34	115.94	122.45

Continued on next page...

Continued from previous page...

Mol	Chain	Res	Type	Atoms	Z	Observed(°)	Ideal(°)
5	A	206	A1B7L	C11-C-N	3.29	108.92	107.06
5	A	206	A1B7L	C3-C11-C	3.19	110.19	108.38
5	D	204	A1B7L	C2-C3-C4	3.16	129.80	127.38
5	B	202	A1B7L	C2-C3-C11	3.00	111.78	109.56
5	D	204	A1B7L	C11-C-N	2.94	108.73	107.06
5	B	202	A1B7L	O-C16-N	2.94	124.76	119.99
5	F	202	A1B7L	O3-C22-O4	2.86	121.88	118.14
5	D	204	A1B7L	C23-C17-C16	2.75	121.20	116.63
5	B	202	A1B7L	O-C16-C17	-2.62	120.08	125.06
5	A	206	A1B7L	C23-C17-C16	2.60	120.97	116.63
5	F	202	A1B7L	C3-C11-C	2.57	109.84	108.38
2	F	201	MES	O2S-S-C8	2.52	110.53	106.73
5	F	202	A1B7L	C23-C17-C16	2.52	120.82	116.63
5	A	206	A1B7L	O-C16-C17	-2.49	120.32	125.06
5	B	202	A1B7L	C24-C18-C17	-2.43	117.65	120.25
5	B	202	A1B7L	C11-N3-C10	-2.41	112.43	117.15
5	A	206	A1B7L	C14-C8-C9	2.39	121.81	119.43
2	A	201	MES	O2S-S-C8	2.31	110.22	106.73
5	A	206	A1B7L	C4-C9-C8	2.27	123.00	120.34
5	F	202	A1B7L	C11-N3-C10	-2.23	112.78	117.15
6	B	201	ACT	OXT-C-O	2.22	130.25	122.03
5	A	206	A1B7L	C2-C3-C4	2.20	129.07	127.38
5	A	206	A1B7L	O-C16-N	2.20	123.56	119.99
6	D	203	ACT	OXT-C-O	2.12	129.90	122.03
5	B	202	A1B7L	C3-C2-N	-2.11	100.31	102.53
5	F	202	A1B7L	C-C24-C18	-2.07	115.25	119.09
5	F	202	A1B7L	C24-C18-C17	-2.04	118.06	120.25
5	D	204	A1B7L	O-C16-C17	-2.03	121.19	125.06
5	B	202	A1B7L	C-C24-C18	-2.02	115.34	119.09
5	D	204	A1B7L	C-C24-C18	-2.00	115.37	119.09

There are no chirality outliers.

All (11) torsion outliers are listed below:

Mol	Chain	Res	Type	Atoms
2	A	201	MES	C7-C8-S-O1S
2	A	201	MES	C7-C8-S-O2S
2	A	201	MES	C7-C8-S-O3S
3	A	202	PEG	O1-C1-C2-O2
7	D	202	PG4	O3-C5-C6-O4
7	D	202	PG4	O2-C3-C4-O3
7	D	202	PG4	C5-C6-O4-C7

Continued on next page...

Continued from previous page...

Mol	Chain	Res	Type	Atoms
7	D	202	PG4	C3-C4-O3-C5
7	D	202	PG4	C8-C7-O4-C6
7	D	202	PG4	C6-C5-O3-C4
7	D	202	PG4	O4-C7-C8-O5

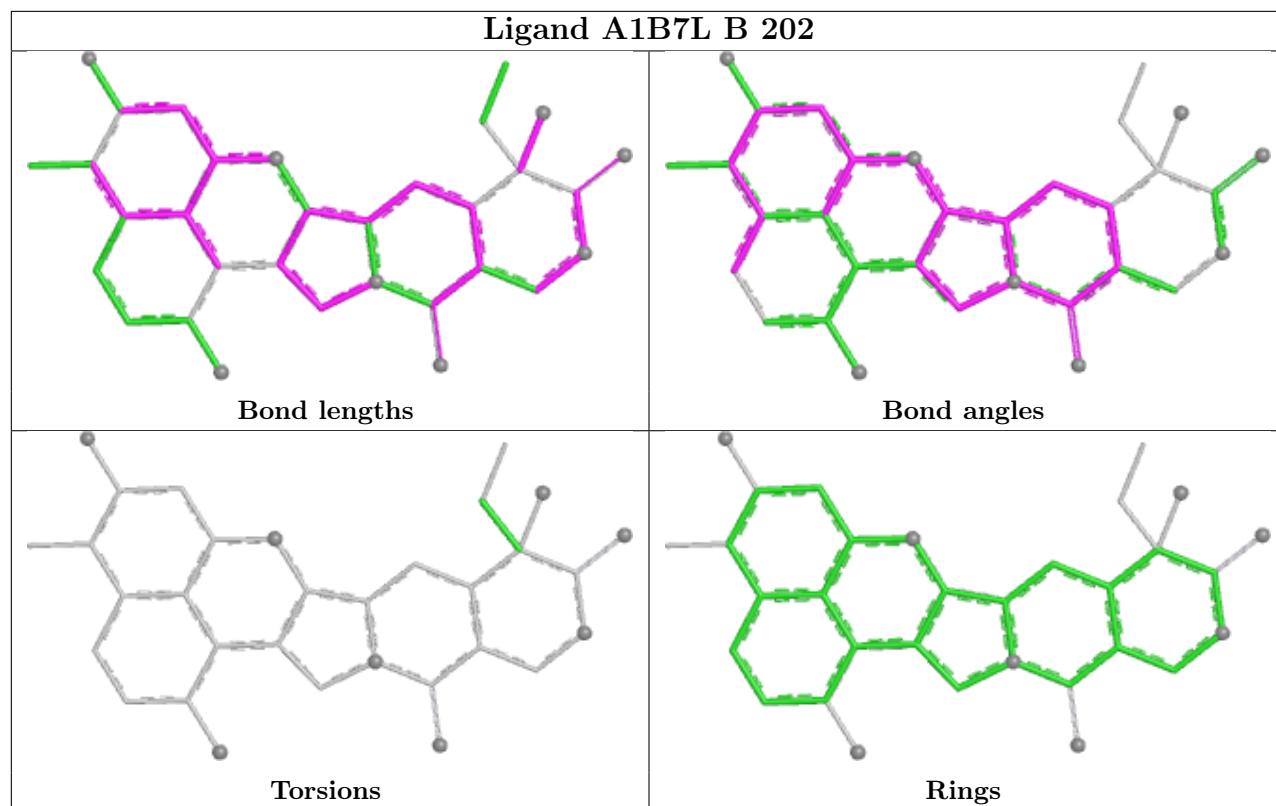
There are no ring outliers.

5 monomers are involved in 19 short contacts:

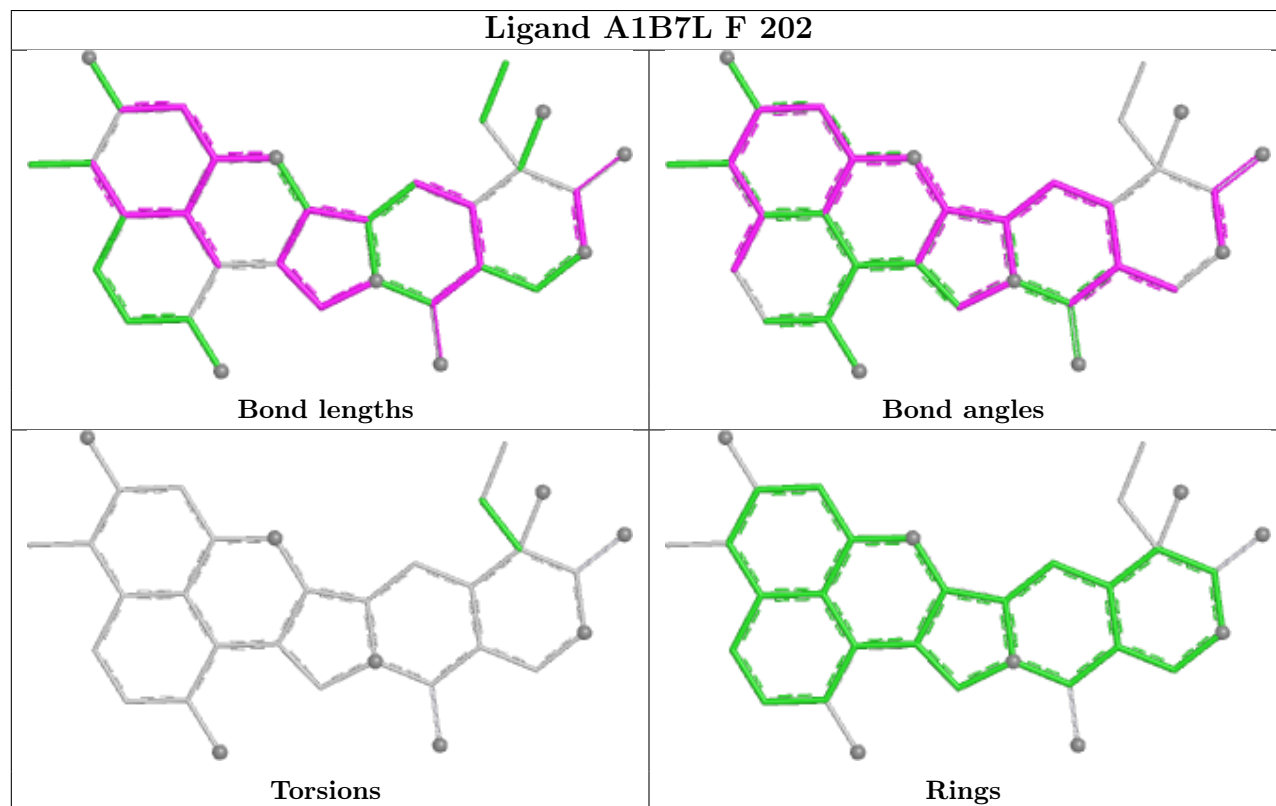
Mol	Chain	Res	Type	Clashes	Symm-Clashes
5	B	202	A1B7L	1	0
7	D	202	PG4	13	0
3	A	202	PEG	1	0
5	D	204	A1B7L	3	0
5	A	206	A1B7L	1	0

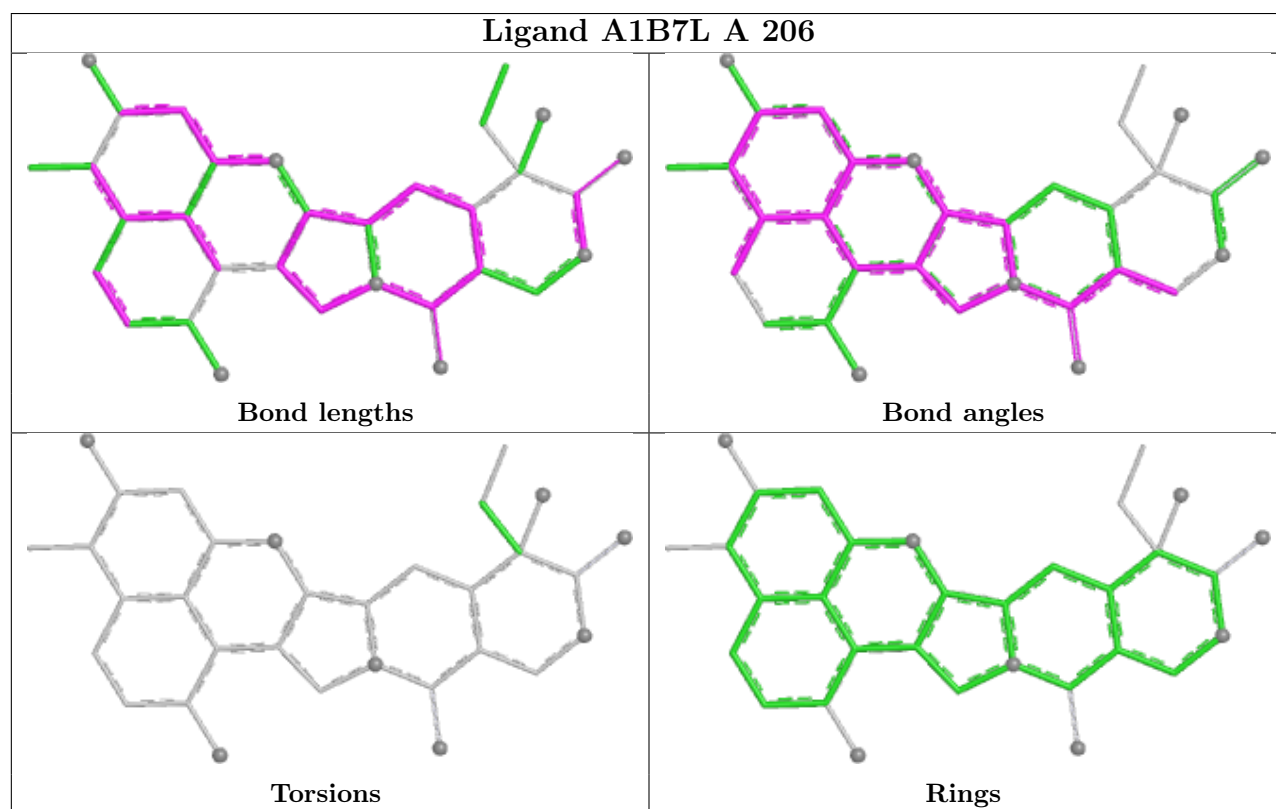
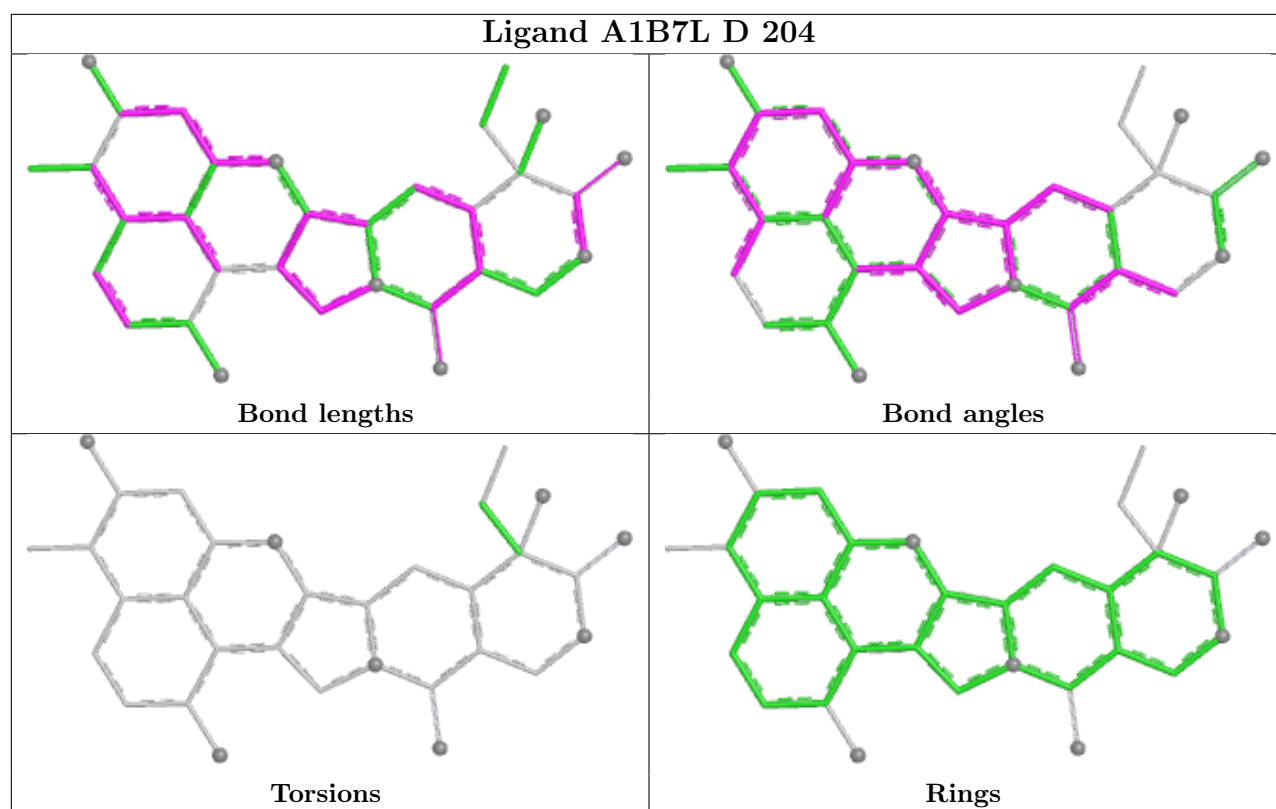
The following is a two-dimensional graphical depiction of Mogul quality analysis of bond lengths, bond angles, torsion angles, and ring geometry for all instances of the Ligand of Interest. In addition, ligands with molecular weight > 250 and outliers as shown on the validation Tables will also be included. For torsion angles, if less than 5% of the Mogul distribution of torsion angles is within 10 degrees of the torsion angle in question, then that torsion angle is considered an outlier. Any bond that is central to one or more torsion angles identified as an outlier by Mogul will be highlighted in the graph. For rings, the root-mean-square deviation (RMSD) between the ring in question and similar rings identified by Mogul is calculated over all ring torsion angles. If the average RMSD is greater than 60 degrees and the minimal RMSD between the ring in question and any Mogul-identified rings is also greater than 60 degrees, then that ring is considered an outlier. The outliers are highlighted in purple. The color gray indicates Mogul did not find sufficient equivalents in the CSD to analyse the geometry.

Ligand A1B7L B 202



Ligand A1B7L F 202





5.7 Other polymers [i](#)

There are no such residues in this entry.

5.8 Polymer linkage issues ⓘ

There are no chain breaks in this entry.

6 Fit of model and data ⓘ

6.1 Protein, DNA and RNA chains ⓘ

In the following table, the column labelled ‘#RSRZ > 2’ contains the number (and percentage) of RSRZ outliers, followed by percent RSRZ outliers for the chain as percentile scores relative to all X-ray entries and entries of similar resolution. The OWAB column contains the minimum, median, 95th percentile and maximum values of the occupancy-weighted average B-factor per residue. The column labelled ‘Q < 0.9’ lists the number of (and percentage) of residues with an average occupancy less than 0.9.

Mol	Chain	Analysed	<RSRZ>	#RSRZ>2	OWAB(Å ²)	Q<0.9
1	A	148/148 (100%)	0.66	19 (12%) 7 9	26, 41, 76, 97	0
1	B	148/148 (100%)	0.59	12 (8%) 18 21	27, 41, 71, 110	0
1	D	148/148 (100%)	0.35	6 (4%) 41 48	23, 35, 55, 74	0
1	F	148/148 (100%)	1.01	25 (16%) 4 4	28, 48, 81, 111	0
All	All	592/592 (100%)	0.65	62 (10%) 11 13	23, 41, 74, 111	0

All (62) RSRZ outliers are listed below:

Mol	Chain	Res	Type	RSRZ
1	B	78	PRO	4.5
1	F	1	GLU	4.4
1	F	78	PRO	4.2
1	A	75	ILE	4.0
1	F	70	GLU	3.5
1	D	78	PRO	3.5
1	F	72	VAL	3.5
1	F	146	LEU	3.5
1	F	79	ALA	3.4
1	F	3	LEU	3.4
1	B	79	ALA	3.3
1	A	148	ILE	3.3
1	A	146	LEU	3.2
1	B	77	THR	3.2
1	A	84	VAL	3.0
1	F	114	LEU	3.0
1	F	69	LEU	2.9
1	A	147	ALA	2.8
1	B	72	VAL	2.8
1	A	72	VAL	2.7
1	F	81	THR	2.7

Continued on next page...

Continued from previous page...

Mol	Chain	Res	Type	RSRZ
1	F	100	ILE	2.7
1	F	76	ASP	2.6
1	F	4	ILE	2.6
1	F	148	ILE	2.6
1	A	77	THR	2.6
1	F	68	LEU	2.5
1	B	35	LYS	2.5
1	B	75	ILE	2.5
1	F	11	ILE	2.5
1	F	142	TYR	2.4
1	A	80	ALA	2.4
1	B	143	ALA	2.4
1	A	78	PRO	2.4
1	B	148	ILE	2.4
1	A	81	THR	2.4
1	B	80	ALA	2.4
1	A	3	LEU	2.4
1	D	77	THR	2.4
1	F	75	ILE	2.4
1	A	73	ARG	2.3
1	F	73	ARG	2.3
1	D	29	LYS	2.3
1	A	142	TYR	2.3
1	A	145	TYR	2.3
1	B	1	GLU	2.3
1	F	145	TYR	2.2
1	B	119	GLU	2.2
1	F	115	GLU	2.2
1	F	147	ALA	2.2
1	D	57	LEU	2.2
1	F	77	THR	2.2
1	A	14	LEU	2.1
1	A	5	LYS	2.1
1	A	4	ILE	2.1
1	D	70	GLU	2.1
1	D	33	GLU	2.1
1	F	16	GLU	2.1
1	B	146	LEU	2.0
1	A	79	ALA	2.0
1	A	74	LYS	2.0
1	F	37	ILE	2.0

6.2 Non-standard residues in protein, DNA, RNA chains ⓘ

There are no non-standard protein/DNA/RNA residues in this entry.

6.3 Carbohydrates ⓘ

There are no oligosaccharides in this entry.

6.4 Ligands ⓘ

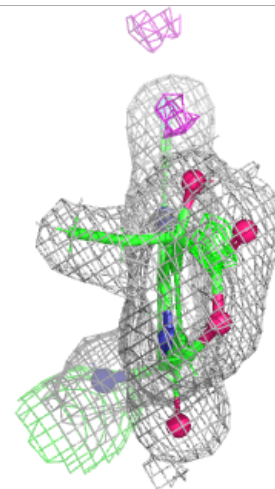
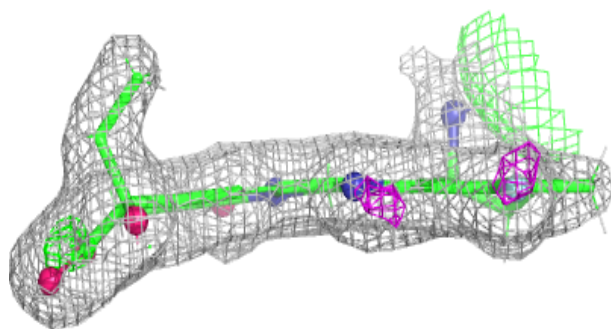
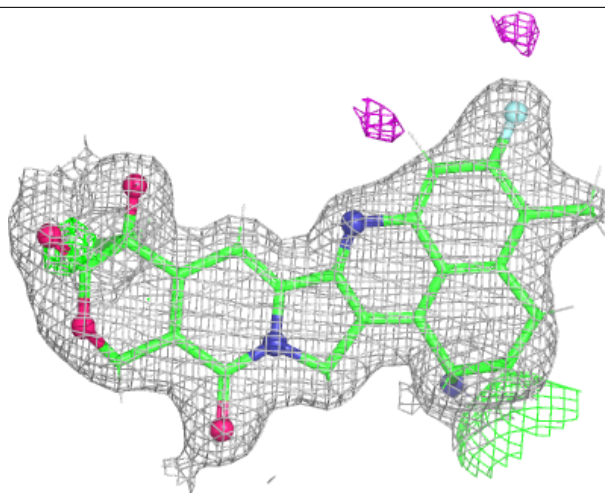
In the following table, the Atoms column lists the number of modelled atoms in the group and the number defined in the chemical component dictionary. The B-factors column lists the minimum, median, 95th percentile and maximum values of B factors of atoms in the group. The column labelled 'Q< 0.9' lists the number of atoms with occupancy less than 0.9.

Mol	Type	Chain	Res	Atoms	RSCC	RSR	B-factors(\AA^2)	Q<0.9
6	ACT	B	201	4/4	0.74	0.18	43,50,60,60	0
6	ACT	D	203	4/4	0.81	0.22	48,53,63,63	0
3	PEG	A	202	7/7	0.82	0.14	30,48,61,69	0
7	PG4	D	202	13/13	0.83	0.14	19,35,49,53	0
2	MES	A	201	6/12	0.85	0.15	48,60,72,72	0
2	MES	D	201	6/12	0.87	0.19	26,44,50,55	0
2	MES	F	201	6/12	0.89	0.15	62,68,82,82	0
4	ZN	D	208	1/1	0.89	0.10	125,125,125,125	0
5	A1B7L	F	202	32/32	0.89	0.12	25,31,39,40	55
5	A1B7L	A	206	32/32	0.91	0.10	22,27,34,38	0
5	A1B7L	B	202	32/32	0.93	0.09	23,29,43,44	0
5	A1B7L	D	204	32/32	0.94	0.08	19,25,32,32	0
4	ZN	B	205	1/1	0.97	0.08	41,41,41,41	0
4	ZN	A	204	1/1	0.98	0.06	41,41,41,41	0
4	ZN	D	205	1/1	0.99	0.02	34,34,34,34	0
4	ZN	D	206	1/1	0.99	0.02	34,34,34,34	0
4	ZN	B	204	1/1	0.99	0.04	31,31,31,31	0
4	ZN	F	203	1/1	0.99	0.02	27,27,27,27	0
4	ZN	F	204	1/1	0.99	0.02	34,34,34,34	0
4	ZN	B	203	1/1	0.99	0.02	25,25,25,25	0
4	ZN	A	203	1/1	1.00	0.01	31,31,31,31	0
4	ZN	D	207	1/1	1.00	0.01	29,29,29,29	0
4	ZN	A	205	1/1	1.00	0.02	27,27,27,27	0

The following is a graphical depiction of the model fit to experimental electron density of all instances of the Ligand of Interest. In addition, ligands with molecular weight > 250 and outliers as shown on the geometry validation Tables will also be included. Each fit is shown from different orientation to approximate a three-dimensional view.

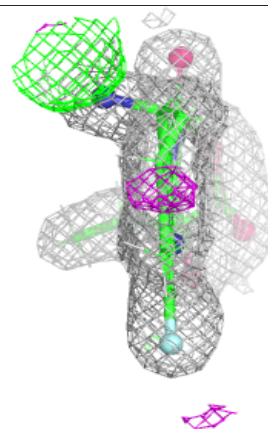
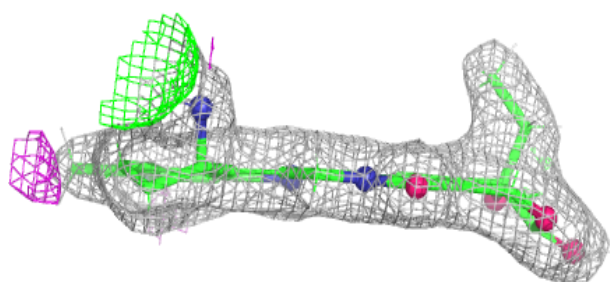
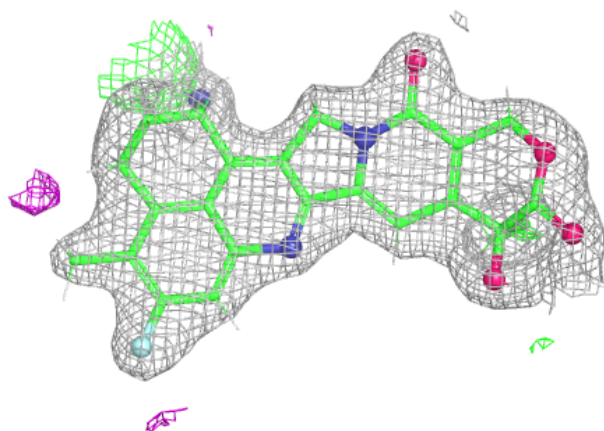
Electron density around A1B7L F 202:

$2mF_o-DF_c$ (at 0.7 rmsd) in gray
 mF_o-DF_c (at 3 rmsd) in purple (negative)
and green (positive)



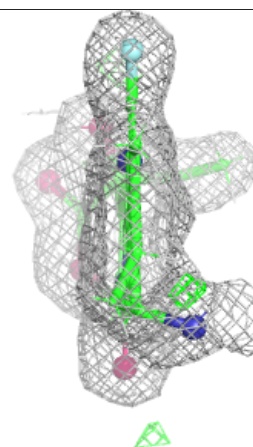
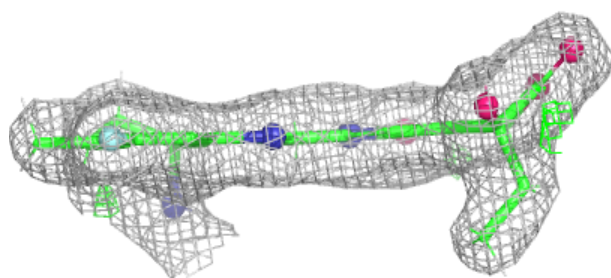
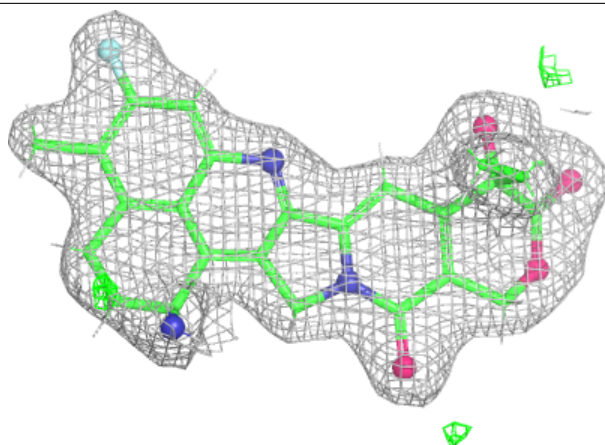
Electron density around A1B7L A 206:

$2mF_o-DF_c$ (at 0.7 rmsd) in gray
 mF_o-DF_c (at 3 rmsd) in purple (negative)
and green (positive)

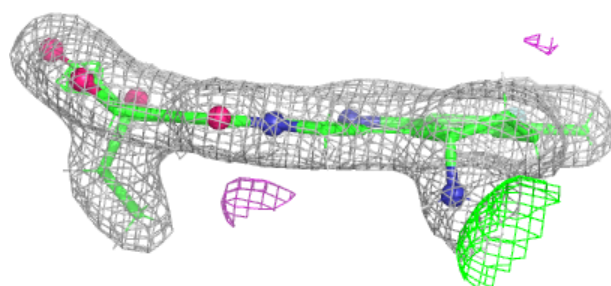
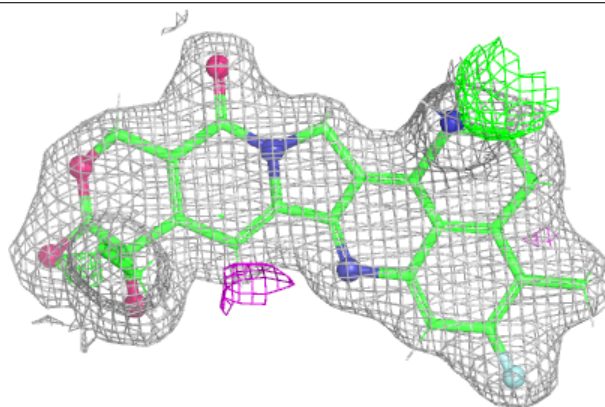


Electron density around A1B7L B 202:

$2mF_o-DF_c$ (at 0.7 rmsd) in gray
 mF_o-DF_c (at 3 rmsd) in purple (negative)
and green (positive)

**Electron density around A1B7L D 204:**

$2mF_o-DF_c$ (at 0.7 rmsd) in gray
 mF_o-DF_c (at 3 rmsd) in purple (negative)
and green (positive)



6.5 Other polymers [i](#)

There are no such residues in this entry.