



wwPDB EM Validation Summary Report ⓘ

Dec 19, 2022 – 12:25 pm GMT

PDB ID : 7NSB
EMDB ID : EMD-12563
Title : Supramolecular assembly module of yeast Chelator-GID SR4 E3 ubiquitin ligase
Authors : Chrustowicz, J.; Sherpa, D.; Prabu, J.R.; Schulman, B.A.
Deposited on : 2021-03-05
Resolution : 3.70 Å(reported)

This is a wwPDB EM Validation Summary Report for a publicly released PDB entry.

We welcome your comments at validation@mail.wwpdb.org

A user guide is available at

<https://www.wwpdb.org/validation/2017/EMValidationReportHelp>

with specific help available everywhere you see the ⓘ symbol.

The types of validation reports are described at

<http://www.wwpdb.org/validation/2017/FAQs#types>.

The following versions of software and data (see [references ⓘ](#)) were used in the production of this report:

EMDB validation analysis : 0.0.1.dev43
MolProbity : 4.02b-467
Percentile statistics : 20191225.v01 (using entries in the PDB archive December 25th 2019)
MapQ : 1.9.9
Ideal geometry (proteins) : Engh & Huber (2001)
Ideal geometry (DNA, RNA) : Parkinson et al. (1996)
Validation Pipeline (wwPDB-VP) : 2.31.3

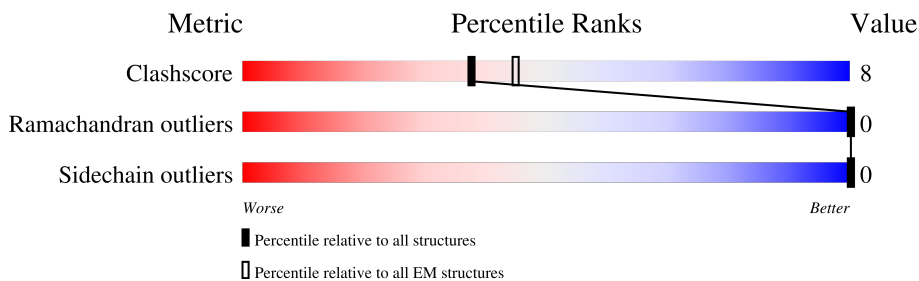
1 Overall quality at a glance

The following experimental techniques were used to determine the structure:

ELECTRON MICROSCOPY

The reported resolution of this entry is 3.70 Å.

Percentile scores (ranging between 0-100) for global validation metrics of the entry are shown in the following graphic. The table shows the number of entries on which the scores are based.



Metric	Whole archive (#Entries)	EM structures (#Entries)
Clashscore	158937	4297
Ramachandran outliers	154571	4023
Sidechain outliers	154315	3826

The table below summarises the geometric issues observed across the polymeric chains and their fit to the map. The red, orange, yellow and green segments of the bar indicate the fraction of residues that contain outliers for ≥ 3 , 2, 1 and 0 types of geometric quality criteria respectively. A grey segment represents the fraction of residues that are not modelled. The numeric value for each fraction is indicated below the corresponding segment, with a dot representing fractions $\leq 5\%$. The upper red bar (where present) indicates the fraction of residues that have poor fit to the EM map (all-atom inclusion $< 40\%$). The numeric value is given above the bar.

Mol	Chain	Length	Quality of chain
1	a	958	
2	7	745	
2	g	745	
3	h	493	

2 Entry composition i

There are 3 unique types of molecules in this entry. The entry contains 13474 atoms, of which 0 are hydrogens and 0 are deuteriums.

In the tables below, the AltConf column contains the number of residues with at least one atom in alternate conformation and the Trace column contains the number of residues modelled with at most 2 atoms.

- Molecule 1 is a protein called Vacuolar import and degradation protein 30.

Mol	Chain	Residues	Atoms					AltConf	Trace
			Total	C	N	O	S		
1	a	568	4376	2838	730	797	11	0	0

- Molecule 2 is a protein called Glucose-induced degradation protein 7.

Mol	Chain	Residues	Atoms					AltConf	Trace
			Total	C	N	O	S		
2	g	429	3173	2037	535	585	16	0	0
2	7	531	4075	2642	691	723	19	0	0

- Molecule 3 is a protein called Glucose-induced degradation protein 8.

Mol	Chain	Residues	Atoms					AltConf	Trace
			Total	C	N	O	S		
3	h	247	1850	1208	321	312	9	0	0

There are 38 discrepancies between the modelled and reference sequences:

Chain	Residue	Modelled	Actual	Comment	Reference
h	456	SER	-	expression tag	UNP P40208
h	457	ASP	-	expression tag	UNP P40208
h	458	GLU	-	expression tag	UNP P40208
h	459	ASN	-	expression tag	UNP P40208
h	460	LEU	-	expression tag	UNP P40208
h	461	TYR	-	expression tag	UNP P40208
h	462	PHE	-	expression tag	UNP P40208
h	463	GLN	-	expression tag	UNP P40208
h	464	SER	-	expression tag	UNP P40208
h	465	GLY	-	expression tag	UNP P40208
h	466	TRP	-	expression tag	UNP P40208
h	467	SER	-	expression tag	UNP P40208
h	468	HIS	-	expression tag	UNP P40208

Continued on next page...

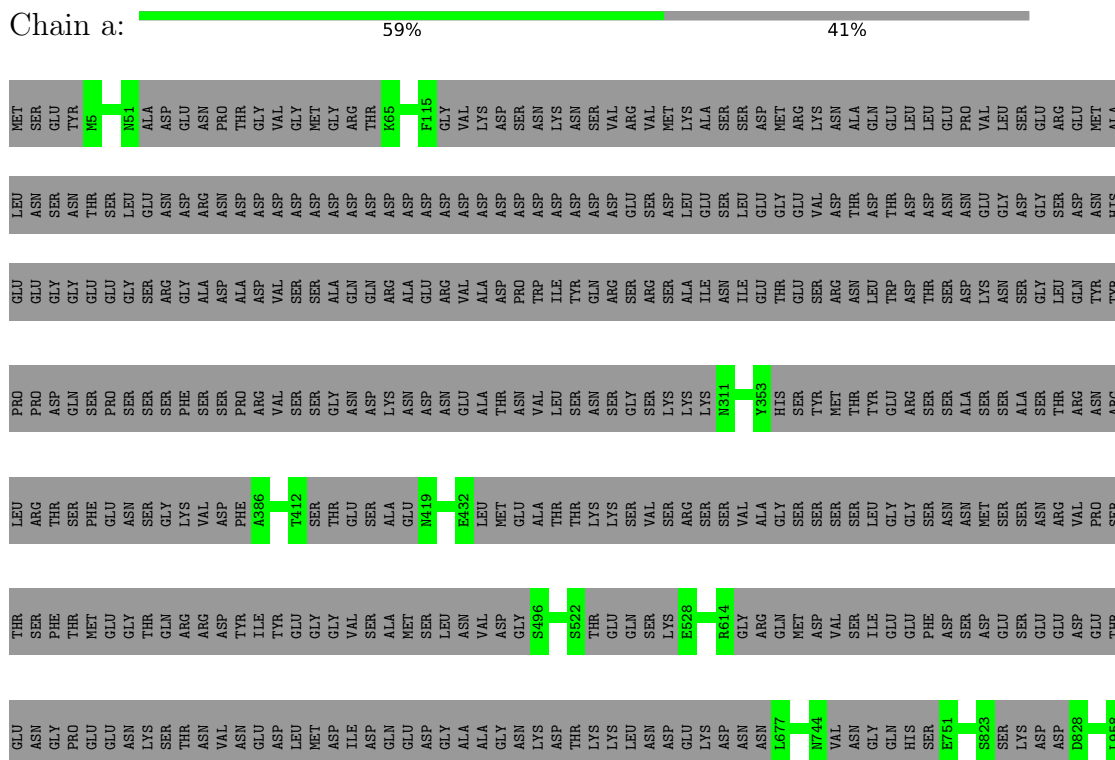
Continued from previous page...

Chain	Residue	Modelled	Actual	Comment	Reference
h	469	PRO	-	expression tag	UNP P40208
h	470	GLN	-	expression tag	UNP P40208
h	471	PHE	-	expression tag	UNP P40208
h	472	GLU	-	expression tag	UNP P40208
h	473	LYS	-	expression tag	UNP P40208
h	474	GLY	-	expression tag	UNP P40208
h	475	GLY	-	expression tag	UNP P40208
h	476	GLY	-	expression tag	UNP P40208
h	477	SER	-	expression tag	UNP P40208
h	478	GLY	-	expression tag	UNP P40208
h	479	GLY	-	expression tag	UNP P40208
h	480	GLY	-	expression tag	UNP P40208
h	481	SER	-	expression tag	UNP P40208
h	482	GLY	-	expression tag	UNP P40208
h	483	GLY	-	expression tag	UNP P40208
h	484	SER	-	expression tag	UNP P40208
h	485	ALA	-	expression tag	UNP P40208
h	486	TRP	-	expression tag	UNP P40208
h	487	SER	-	expression tag	UNP P40208
h	488	HIS	-	expression tag	UNP P40208
h	489	PRO	-	expression tag	UNP P40208
h	490	GLN	-	expression tag	UNP P40208
h	491	PHE	-	expression tag	UNP P40208
h	492	GLU	-	expression tag	UNP P40208
h	493	LYS	-	expression tag	UNP P40208

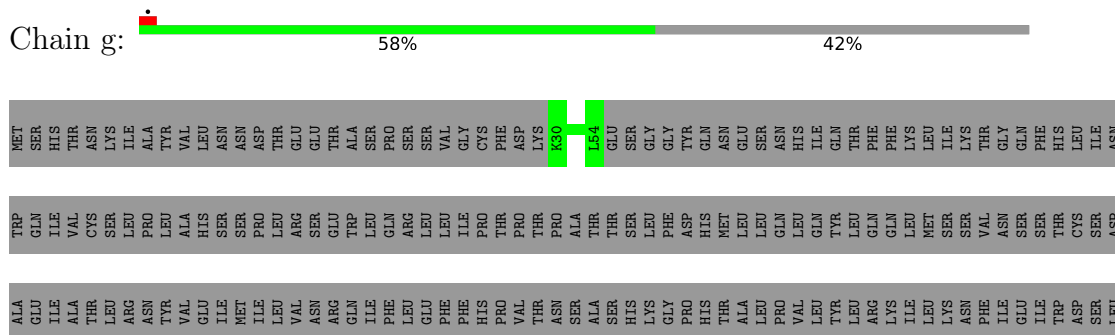
3 Residue-property plots

These plots are drawn for all protein, RNA, DNA and oligosaccharide chains in the entry. The first graphic for a chain summarises the proportions of the various outlier classes displayed in the second graphic. The second graphic shows the sequence view annotated by issues in geometry and atom inclusion in map density. Residues are color-coded according to the number of geometric quality criteria for which they contain at least one outlier: green = 0, yellow = 1, orange = 2 and red = 3 or more. A red diamond above a residue indicates a poor fit to the EM map for this residue (all-atom inclusion < 40%). Stretches of 2 or more consecutive residues without any outlier are shown as a green connector. Residues present in the sample, but not in the model, are shown in grey.

- Molecule 1: Vacuolar import and degradation protein 30



- Molecule 2: Glucose-induced degradation protein 7



THR
GLY
SER
TYR
THR
LYS
GLY
ARG
THR
ASP
ARG
GLN
GLN
GLN
GLN
GLN
GLN
PHE
ASP
ILE
ASP
GLY
ASP
L193
H209
HIS
GLN
GLN
GLU
ASN
ILE
THR
LYS
LYS
ASP
SER
ASN
ASP
PHE
I223
L250
ALA
MET
THR
LEU
LEU
LEU
LEU
PHE
PRO
LEU
SER
ASP
SER
ALA
ASP
SER
GLY
SER

ILE
LYS
LEU
PRO
ASN
GLN
S273
L274
Q275
N318
SER
ASP
LYS
LYS
ILE
ILE
THR
GLN
ASN
PHE
THR
VAL
GLY
TYR
ASN
ASN
ASN
LEU
VAL
ASN
GLY
GLY
SER
ASN
GLY
THR
LYS
LYS
ILE
THR
SER
THR
HIS
ILE
SER
SER
ASP
GLN
PRO
ILE
ASN
GLY
LYS
MET
SER
SER
ASN
VAL
THR
ALA
ALA
SER
ASN
SER

VAL
TRP
LEU
ASN
GLN
ARG
ASP
GLY
ASN
VAL
GLY
THR
GLY
SER
ALA
ALA
THR
THR
PHE
HIS
ASN
LEU
GLY
ASN
LYS
ASN
TYR
TRP
GLN
THR
SER
GLU
LEU
LEU
SER
SER
SER
ASN
GLY
LYS
GLY
LYS
GLY
LEU
GLU
PHE
N416
M455
SER
ASP
GLU
ASN
LEU
TYR
PHE
GLN
SER
GLY

TRP
SER
HIS
PRO
GLN
PHE
GLU
LYS
GLY
GLY
SER
GLY
GLY
GLY
SER
SER
GLY
GLY
SER
ALA
ALA
TRP
SER
HIS
PRO
GLN
PHE
GLU
LYS

4 Experimental information

Property	Value	Source
EM reconstruction method	SINGLE PARTICLE	Depositor
Imposed symmetry	POINT, Not provided	
Number of particles used	48629	Depositor
Resolution determination method	FSC 0.143 CUT-OFF	Depositor
CTF correction method	PHASE FLIPPING AND AMPLITUDE CORRECTION	Depositor
Microscope	FEI TITAN KRIOS	Depositor
Voltage (kV)	300	Depositor
Electron dose ($e^-/\text{\AA}^2$)	79.2	Depositor
Minimum defocus (nm)	Not provided	
Maximum defocus (nm)	Not provided	
Magnification	Not provided	
Image detector	GATAN K3 BIOQUANTUM (6k x 4k)	Depositor
Maximum map value	0.233	Depositor
Minimum map value	-0.136	Depositor
Average map value	0.000	Depositor
Map value standard deviation	0.003	Depositor
Recommended contour level	0.036	Depositor
Map size (Å)	455.04, 455.04, 455.04	wwPDB
Map dimensions	288, 288, 288	wwPDB
Map angles (°)	90.0, 90.0, 90.0	wwPDB
Pixel spacing (Å)	1.58, 1.58, 1.58	Depositor

5 Model quality [i](#)

5.1 Standard geometry [i](#)

The Z score for a bond length (or angle) is the number of standard deviations the observed value is removed from the expected value. A bond length (or angle) with $|Z| > 5$ is considered an outlier worth inspection. RMSZ is the root-mean-square of all Z scores of the bond lengths (or angles).

Mol	Chain	Bond lengths		Bond angles	
		RMSZ	# Z >5	RMSZ	# Z >5
1	a	0.28	0/4463	0.45	0/6068
2	7	0.28	0/4163	0.48	0/5666
2	g	0.29	0/3243	0.49	0/4428
3	h	0.27	0/1891	0.44	0/2573
All	All	0.28	0/13760	0.47	0/18735

There are no bond length outliers.

There are no bond angle outliers.

There are no chirality outliers.

There are no planarity outliers.

5.2 Too-close contacts [i](#)

In the following table, the Non-H and H(model) columns list the number of non-hydrogen atoms and hydrogen atoms in the chain respectively. The H(added) column lists the number of hydrogen atoms added and optimized by MolProbity. The Clashes column lists the number of clashes within the asymmetric unit, whereas Symm-Clashes lists symmetry-related clashes.

Mol	Chain	Non-H	H(model)	H(added)	Clashes	Symm-Clashes
1	a	4376	0	4177	0	0
2	7	4075	0	3866	68	0
2	g	3173	0	2918	0	0
3	h	1850	0	1721	0	0
All	All	13474	0	12682	68	0

The all-atom clashscore is defined as the number of clashes found per 1000 atoms (including hydrogen atoms). The all-atom clashscore for this structure is 8.

The worst 5 of 68 close contacts within the same asymmetric unit are listed below, sorted by their clash magnitude.

Atom-1	Atom-2	Interatomic distance (Å)	Clash overlap (Å)
2:7:82:ASN:HA	2:7:124:GLN:HE22	1.55	0.71
2:7:486:HIS:HE1	2:7:491:LYS:O	1.76	0.69
2:7:185:VAL:HG12	2:7:229:LEU:HD11	1.78	0.64
2:7:125:LEU:HD21	2:7:194:ASN:HD22	1.62	0.64
2:7:605:THR:HG22	2:7:606:CYS:H	1.63	0.64

There are no symmetry-related clashes.

5.3 Torsion angles [i](#)

5.3.1 Protein backbone [i](#)

In the following table, the Percentiles column shows the percent Ramachandran outliers of the chain as a percentile score with respect to all PDB entries followed by that with respect to all EM entries.

The Analysed column shows the number of residues for which the backbone conformation was analysed, and the total number of residues.

Mol	Chain	Analysed	Favoured	Allowed	Outliers	Percentiles	
1	a	548/958 (57%)	498 (91%)	50 (9%)	0	100	100
2	7	507/745 (68%)	439 (87%)	68 (13%)	0	100	100
2	g	417/745 (56%)	360 (86%)	57 (14%)	0	100	100
3	h	235/493 (48%)	214 (91%)	21 (9%)	0	100	100
All	All	1707/2941 (58%)	1511 (88%)	196 (12%)	0	100	100

There are no Ramachandran outliers to report.

5.3.2 Protein sidechains [i](#)

In the following table, the Percentiles column shows the percent sidechain outliers of the chain as a percentile score with respect to all PDB entries followed by that with respect to all EM entries.

The Analysed column shows the number of residues for which the sidechain conformation was analysed, and the total number of residues.

Mol	Chain	Analysed	Rotameric	Outliers	Percentiles	
1	a	449/864 (52%)	449 (100%)	0	100	100
2	7	416/682 (61%)	416 (100%)	0	100	100

Continued on next page...

Continued from previous page...

Mol	Chain	Analysed	Rotameric	Outliers	Percentiles	
2	g	316/682 (46%)	316 (100%)	0	100	100
3	h	173/439 (39%)	173 (100%)	0	100	100
All	All	1354/2667 (51%)	1354 (100%)	0	100	100

There are no protein residues with a non-rotameric sidechain to report.

Sometimes sidechains can be flipped to improve hydrogen bonding and reduce clashes. 5 of 8 such sidechains are listed below:

Mol	Chain	Res	Type
2	7	721	ASN
2	7	270	GLN
2	7	194	ASN
2	7	124	GLN
2	7	214	ASN

5.3.3 RNA [i](#)

There are no RNA molecules in this entry.

5.4 Non-standard residues in protein, DNA, RNA chains [i](#)

There are no non-standard protein/DNA/RNA residues in this entry.

5.5 Carbohydrates [i](#)

There are no monosaccharides in this entry.

5.6 Ligand geometry [i](#)

There are no ligands in this entry.

5.7 Other polymers [i](#)

There are no such residues in this entry.

5.8 Polymer linkage issues

There are no chain breaks in this entry.

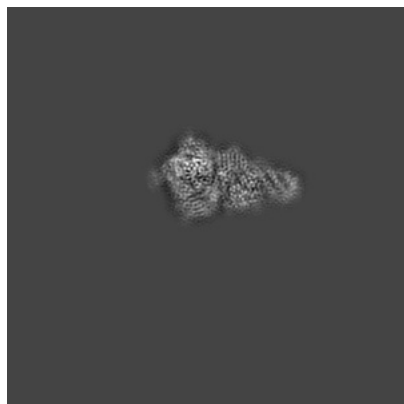
6 Map visualisation [i](#)

This section contains visualisations of the EMDB entry EMD-12563. These allow visual inspection of the internal detail of the map and identification of artifacts.

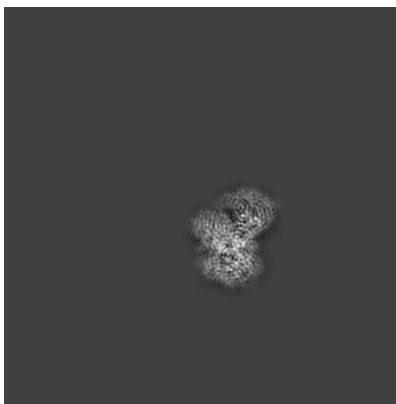
Images derived from a raw map, generated by summing the deposited half-maps, are presented below the corresponding image components of the primary map to allow further visual inspection and comparison with those of the primary map.

6.1 Orthogonal projections [i](#)

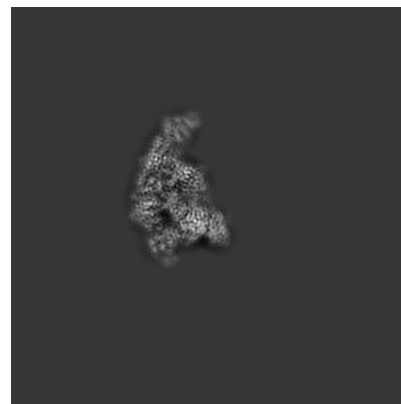
6.1.1 Primary map



X

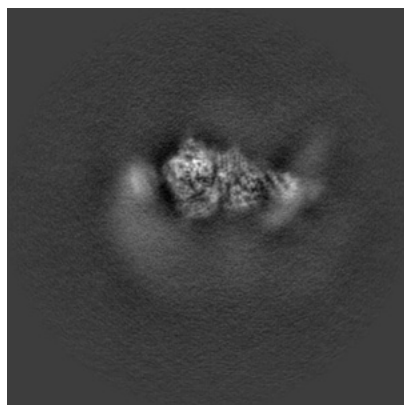


Y

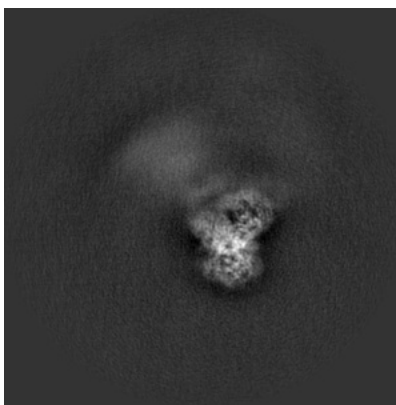


Z

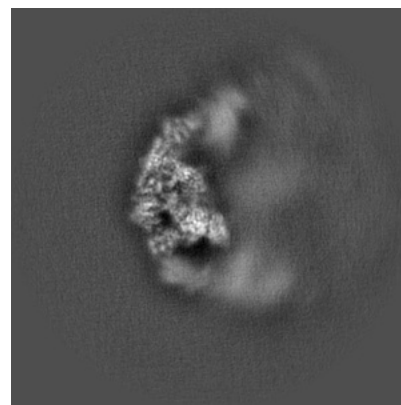
6.1.2 Raw map



X



Y

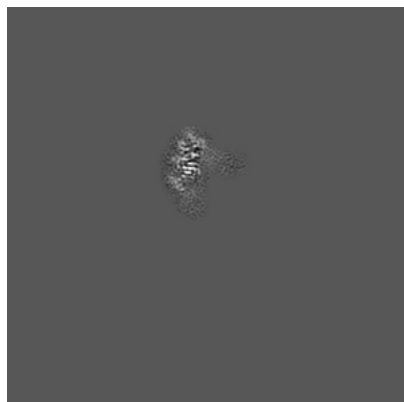


Z

The images above show the map projected in three orthogonal directions.

6.2 Central slices [i](#)

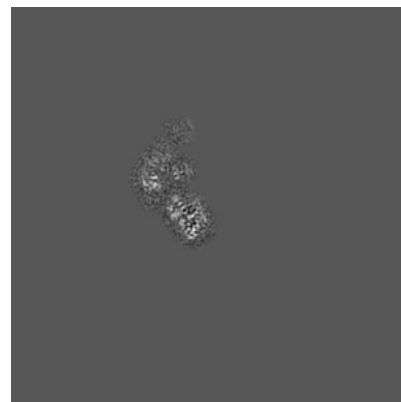
6.2.1 Primary map



X Index: 144

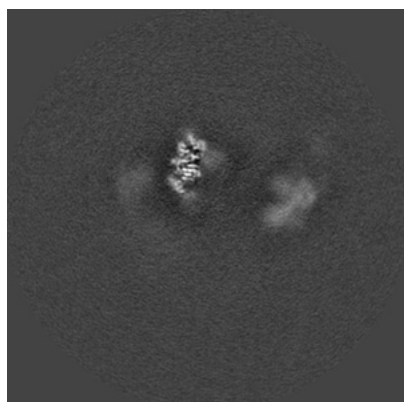


Y Index: 144

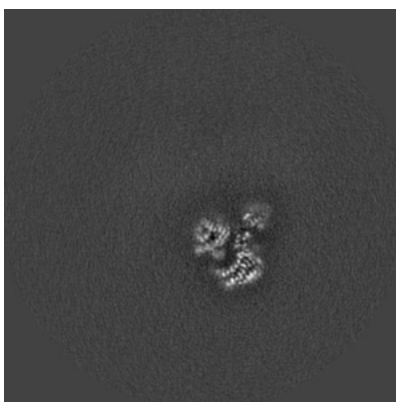


Z Index: 144

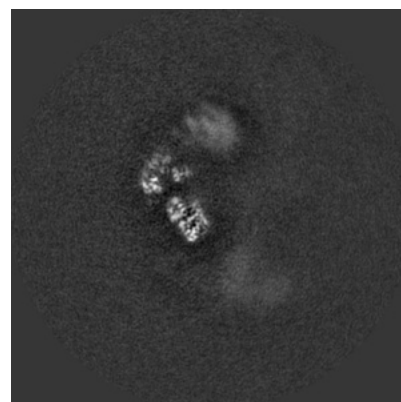
6.2.2 Raw map



X Index: 144



Y Index: 144

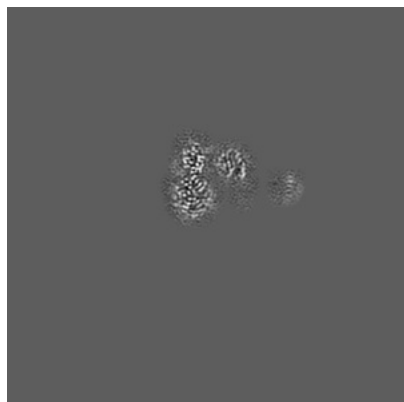


Z Index: 144

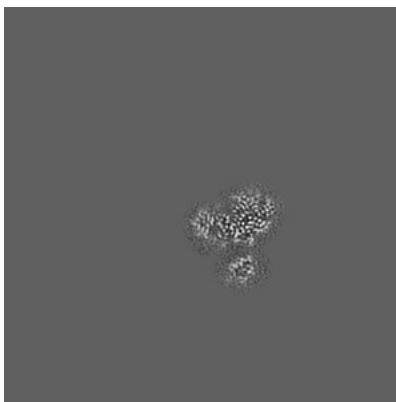
The images above show central slices of the map in three orthogonal directions.

6.3 Largest variance slices [i](#)

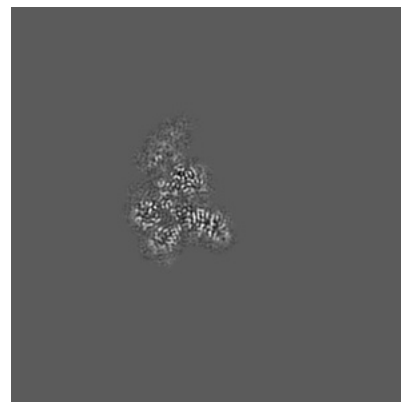
6.3.1 Primary map



X Index: 131

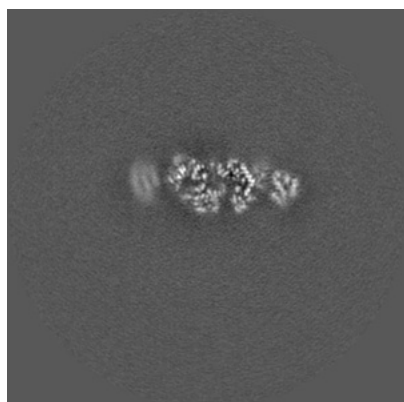


Y Index: 134

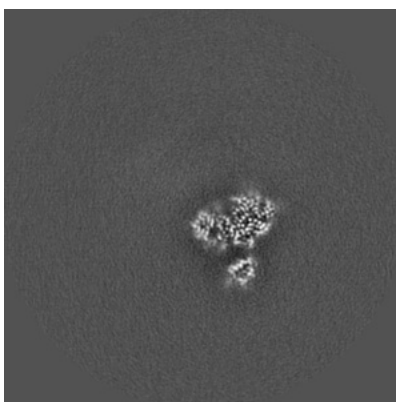


Z Index: 171

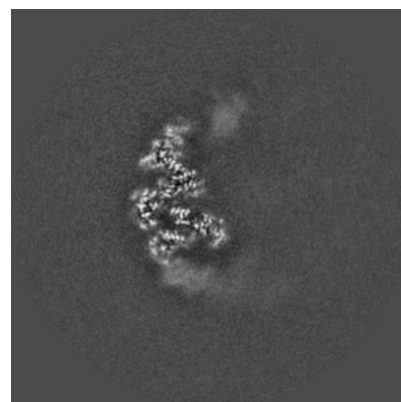
6.3.2 Raw map



X Index: 119



Y Index: 134

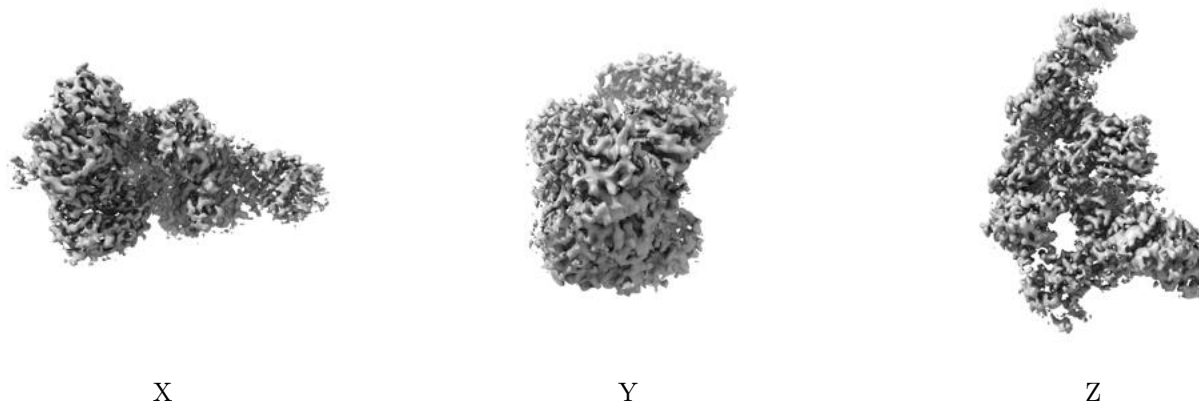


Z Index: 167

The images above show the largest variance slices of the map in three orthogonal directions.

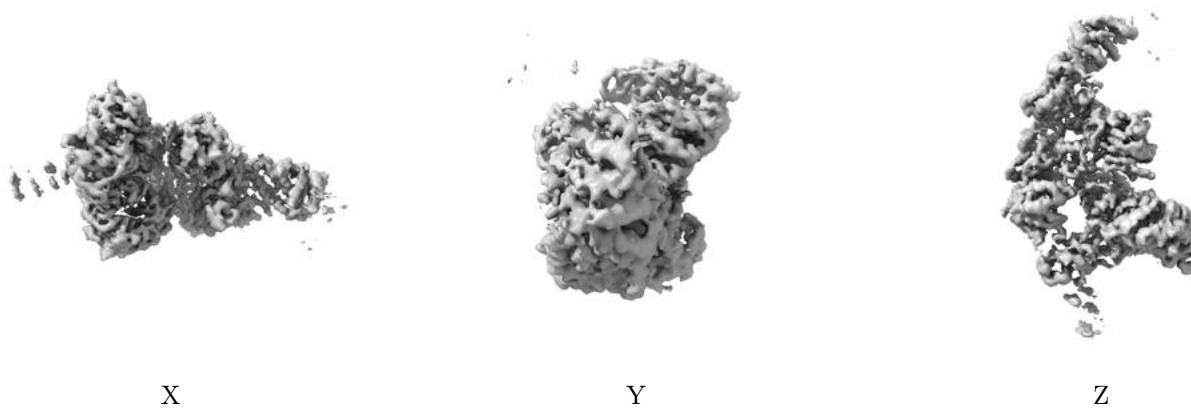
6.4 Orthogonal surface views [i](#)

6.4.1 Primary map



The images above show the 3D surface view of the map at the recommended contour level 0.036. These images, in conjunction with the slice images, may facilitate assessment of whether an appropriate contour level has been provided.

6.4.2 Raw map



These images show the 3D surface of the raw map. The raw map's contour level was selected so that its surface encloses the same volume as the primary map does at its recommended contour level.

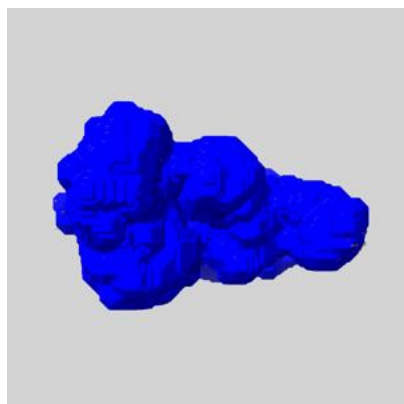
6.5 Mask visualisation [i](#)

This section shows the 3D surface view of the primary map at 50% transparency overlaid with the specified mask at 0% transparency

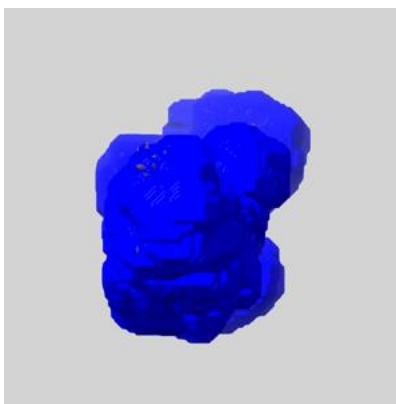
A mask typically either:

- Encompasses the whole structure
- Separates out a domain, a functional unit, a monomer or an area of interest from a larger structure

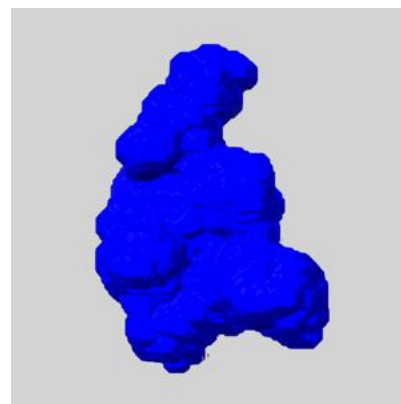
6.5.1 emd_12563_msk_1.map [i](#)



X



Y

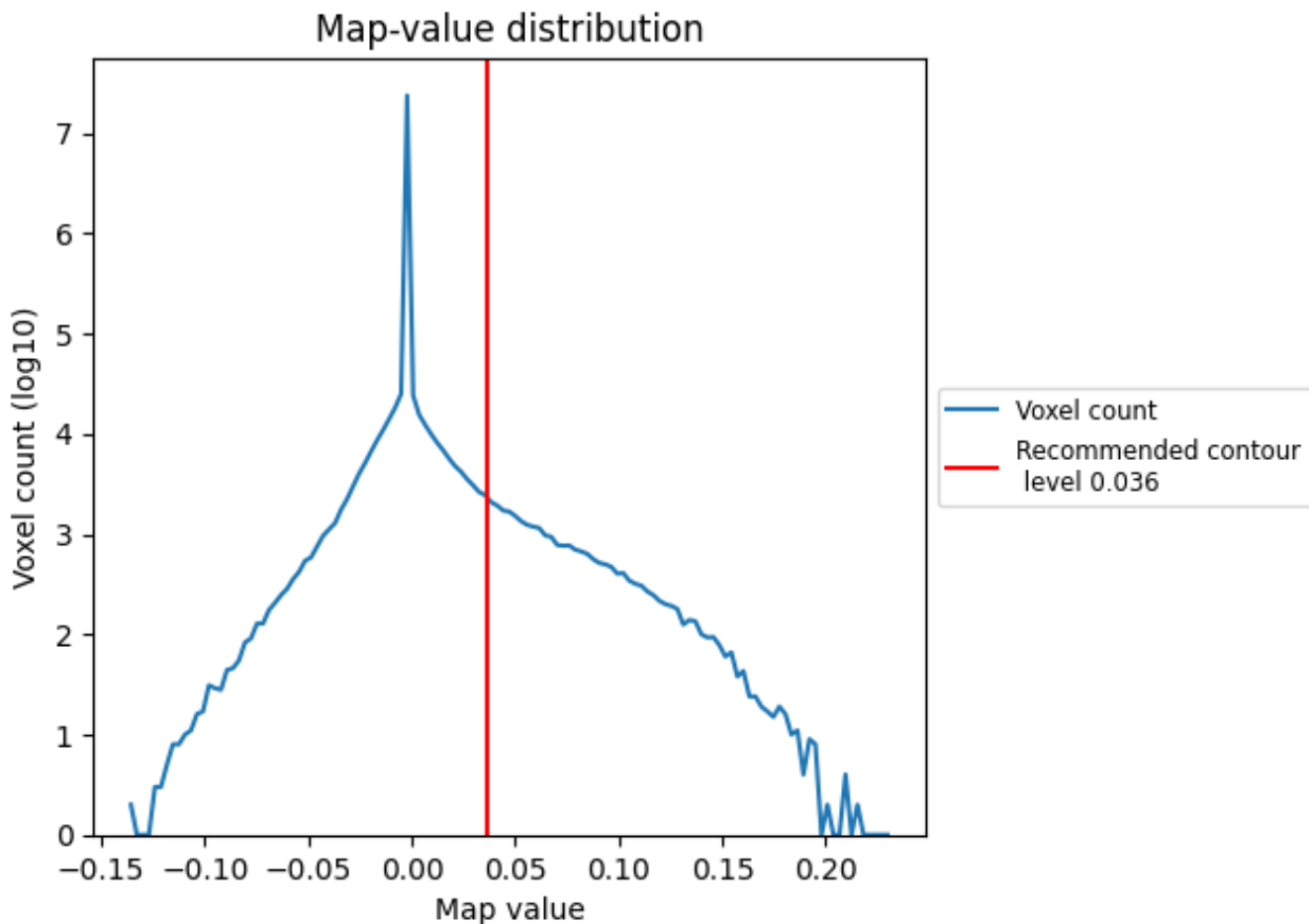


Z

7 Map analysis [i](#)

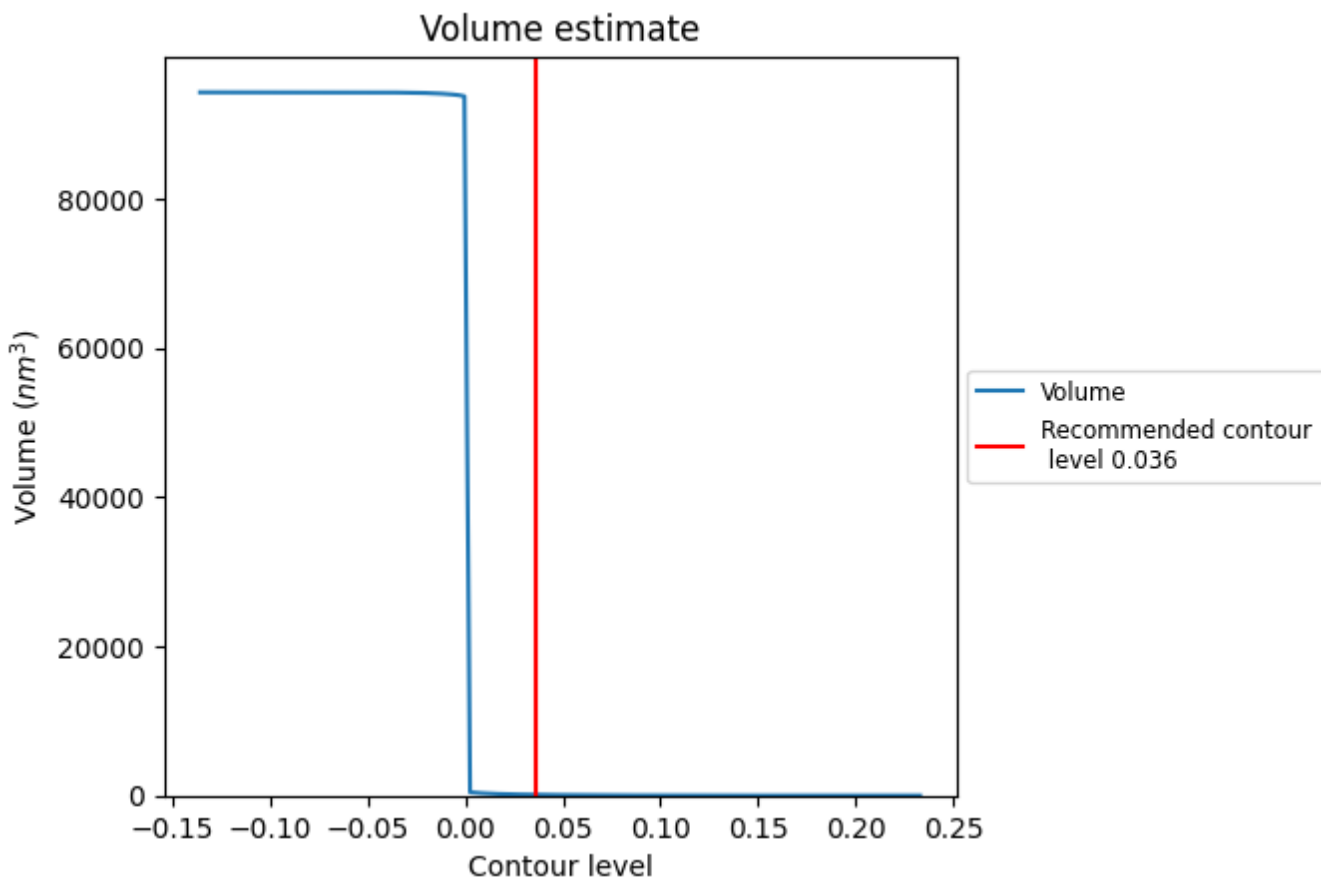
This section contains the results of statistical analysis of the map.

7.1 Map-value distribution [i](#)



The map-value distribution is plotted in 128 intervals along the x-axis. The y-axis is logarithmic. A spike in this graph at zero usually indicates that the volume has been masked.

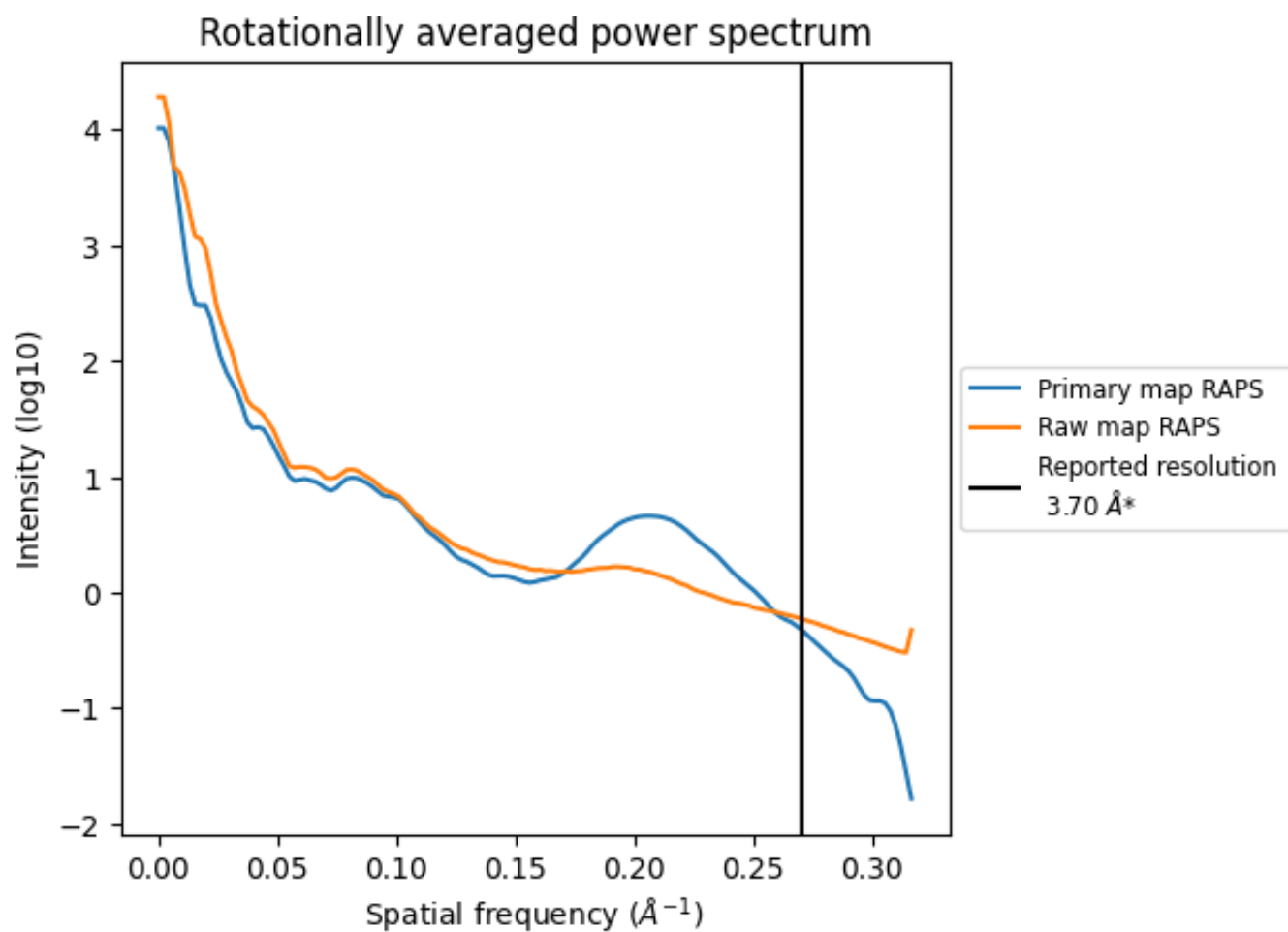
7.2 Volume estimate [\(i\)](#)



The volume at the recommended contour level is 112 nm³; this corresponds to an approximate mass of 101 kDa.

The volume estimate graph shows how the enclosed volume varies with the contour level. The recommended contour level is shown as a vertical line and the intersection between the line and the curve gives the volume of the enclosed surface at the given level.

7.3 Rotationally averaged power spectrum i

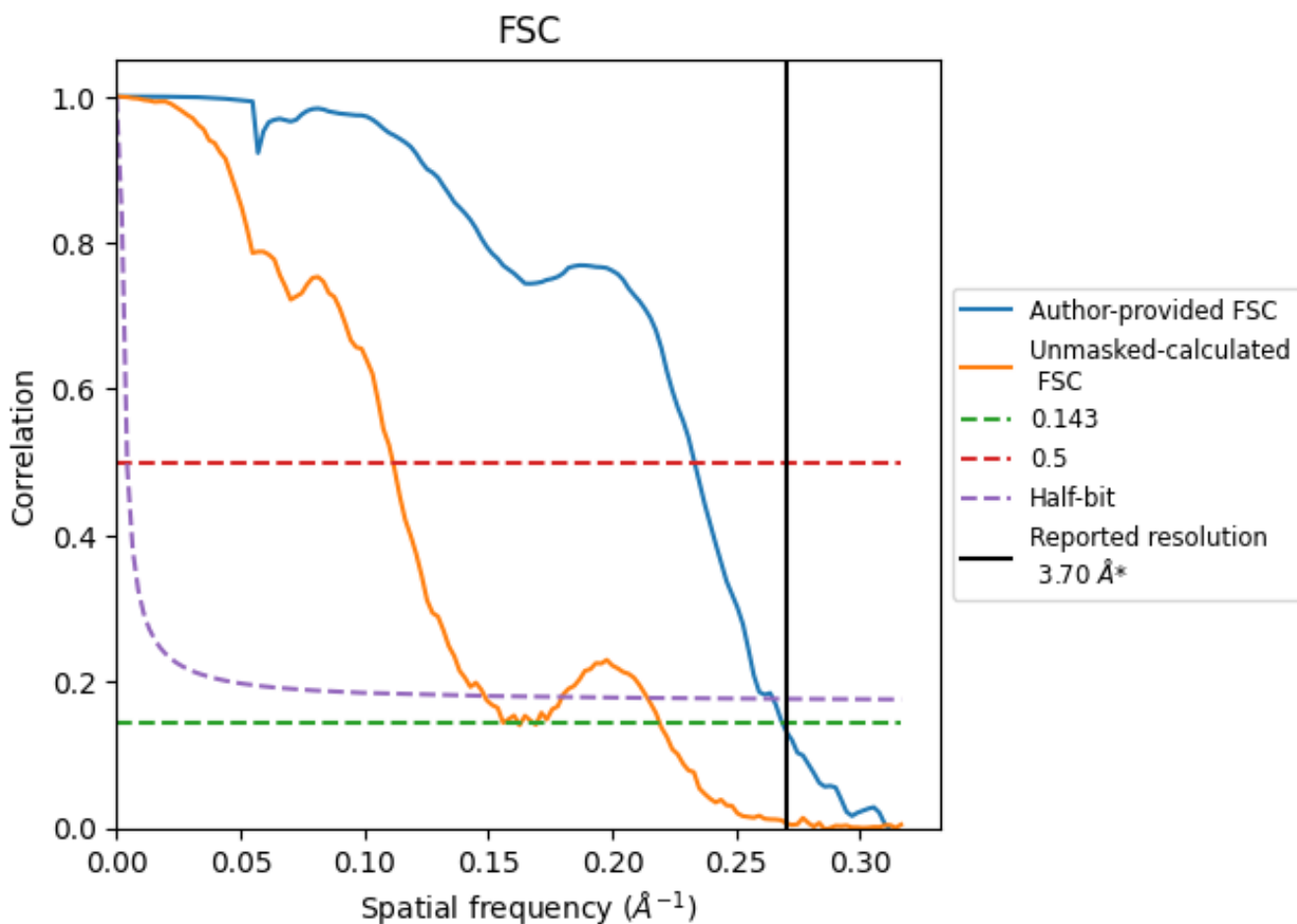


*Reported resolution corresponds to spatial frequency of 0.270 Å⁻¹

8 Fourier-Shell correlation [i](#)

Fourier-Shell Correlation (FSC) is the most commonly used method to estimate the resolution of single-particle and subtomogram-averaged maps. The shape of the curve depends on the imposed symmetry, mask and whether or not the two 3D reconstructions used were processed from a common reference. The reported resolution is shown as a black line. A curve is displayed for the half-bit criterion in addition to lines showing the 0.143 gold standard cut-off and 0.5 cut-off.

8.1 FSC [i](#)



*Reported resolution corresponds to spatial frequency of 0.270 Å⁻¹

8.2 Resolution estimates

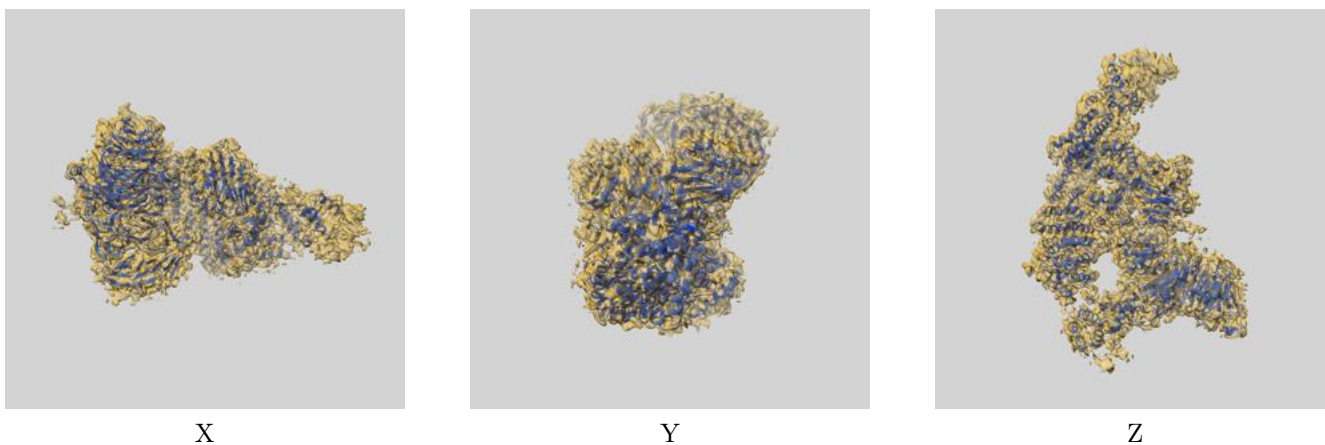
Resolution estimate (Å)	Estimation criterion (FSC cut-off)		
	0.143	0.5	Half-bit
Reported by author	3.70	-	-
Author-provided FSC curve	3.72	4.29	3.78
Unmasked-calculated*	6.17	8.97	6.73

*Resolution estimate based on FSC curve calculated by comparison of deposited half-maps. The value from deposited half-maps intersecting FSC 0.143 CUT-OFF 6.17 differs from the reported value 3.7 by more than 10 %

9 Map-model fit [i](#)

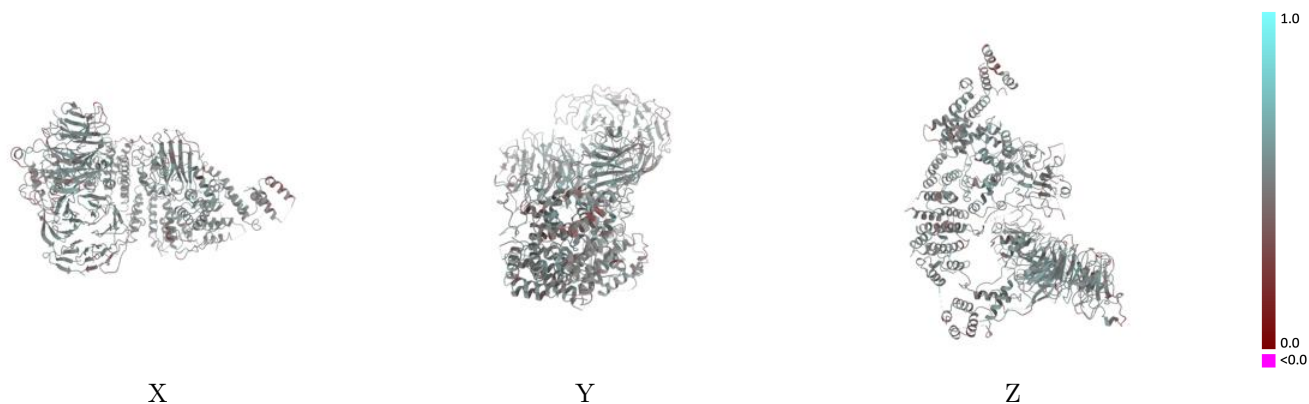
This section contains information regarding the fit between EMDB map EMD-12563 and PDB model 7NSB. Per-residue inclusion information can be found in section 3 on page 5.

9.1 Map-model overlay [i](#)



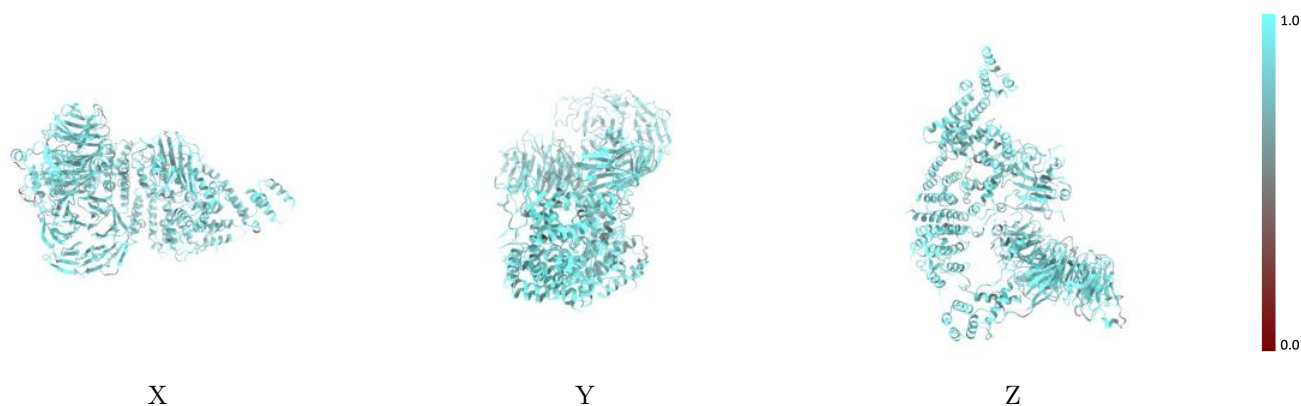
The images above show the 3D surface view of the map at the recommended contour level 0.036 at 50% transparency in yellow overlaid with a ribbon representation of the model coloured in blue. These images allow for the visual assessment of the quality of fit between the atomic model and the map.

9.2 Q-score mapped to coordinate model [i](#)



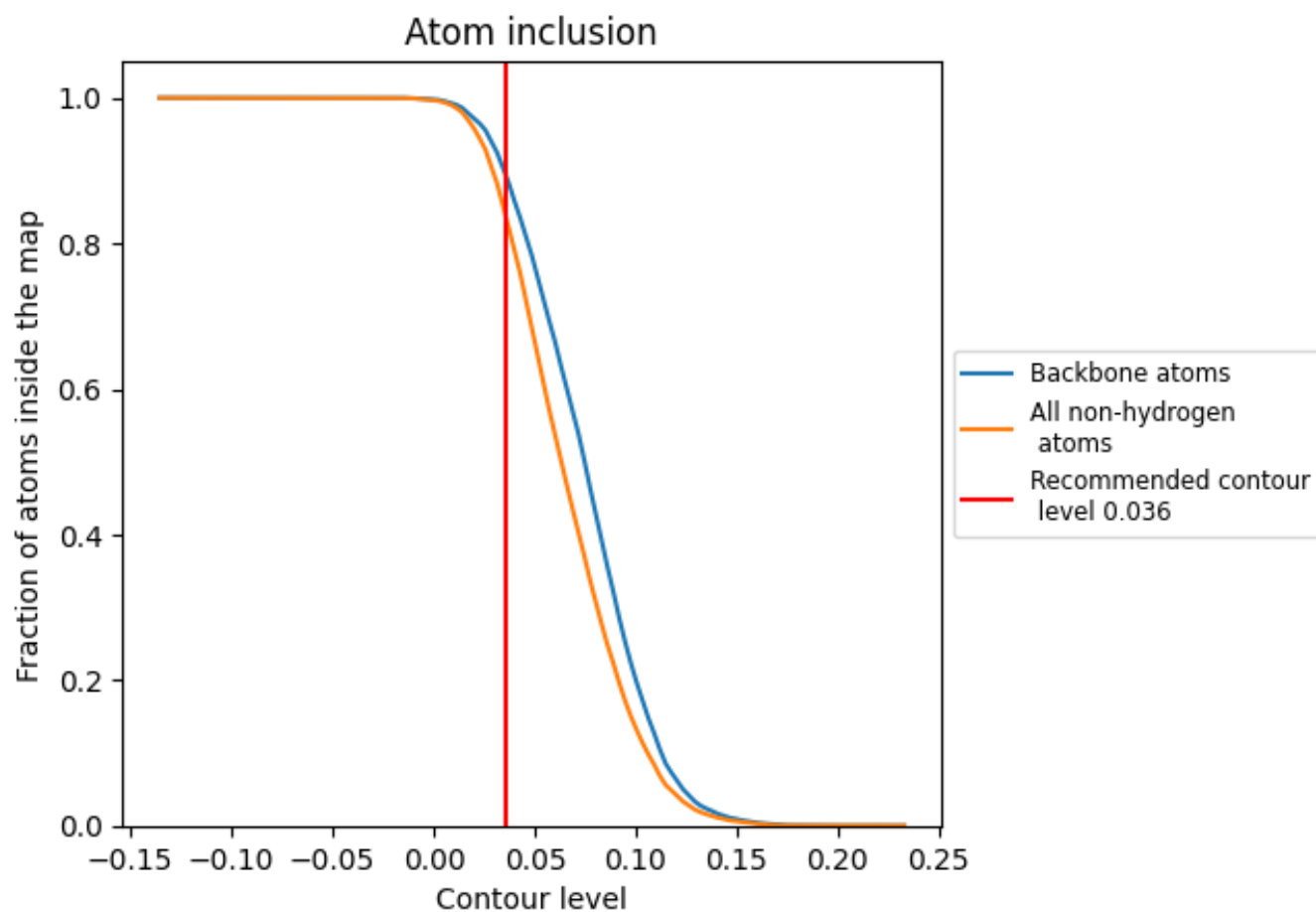
The images above show the model with each residue coloured according to its Q-score. This shows their resolvability in the map with higher Q-score values reflecting better resolvability. Please note: Q-score is calculating the resolvability of atoms, and thus high values are only expected at resolutions at which atoms can be resolved. Low Q-score values may therefore be expected for many entries.

9.3 Atom inclusion mapped to coordinate model [i](#)



The images above show the model with each residue coloured according to its atom inclusion. This shows to what extent they are inside the map at the recommended contour level (0.036).











9.4 Atom inclusion [i](#)



At the recommended contour level, 89% of all backbone atoms, 83% of all non-hydrogen atoms, are inside the map.

9.5 Map-model fit summary

The table lists the average atom inclusion at the recommended contour level (0.036) and Q-score for the entire model and for each chain.

Chain	Atom inclusion	Q-score
All	 0.8341	 0.5000
7	 0.8367	 0.5010
a	 0.8338	 0.5040
g	 0.8161	 0.5000
h	 0.8601	 0.4890

