



# wwPDB X-ray Structure Validation Summary Report ⓘ

Sep 12, 2023 – 09:16 PM EDT

PDB ID : 4NNJ  
Title : Crystal structure of Uba1 in complex with ubiquitin-AMP and thioesterified ubiquitin  
Authors : Schaefer, A.; Schindelin, H.  
Deposited on : 2013-11-18  
Resolution : 2.40 Å(reported)

This is a wwPDB X-ray Structure Validation Summary Report for a publicly released PDB entry.

We welcome your comments at [validation@mail.wwpdb.org](mailto:validation@mail.wwpdb.org)

A user guide is available at

<https://www.wwpdb.org/validation/2017/XrayValidationReportHelp>

with specific help available everywhere you see the ⓘ symbol.

The types of validation reports are described at

<http://www.wwpdb.org/validation/2017/FAQs#types>.

---

The following versions of software and data (see [references ⓘ](#)) were used in the production of this report:

MolProbity : 4.02b-467  
Mogul : 1.8.5 (274361), CSD as541be (2020)  
Xtrriage (Phenix) : 1.13  
EDS : 2.35.1  
buster-report : 1.1.7 (2018)  
Percentile statistics : 20191225.v01 (using entries in the PDB archive December 25th 2019)  
Refmac : 5.8.0158  
CCP4 : 7.0.044 (Gargrove)  
Ideal geometry (proteins) : Engh & Huber (2001)  
Ideal geometry (DNA, RNA) : Parkinson et al. (1996)  
Validation Pipeline (wwPDB-VP) : 2.35.1

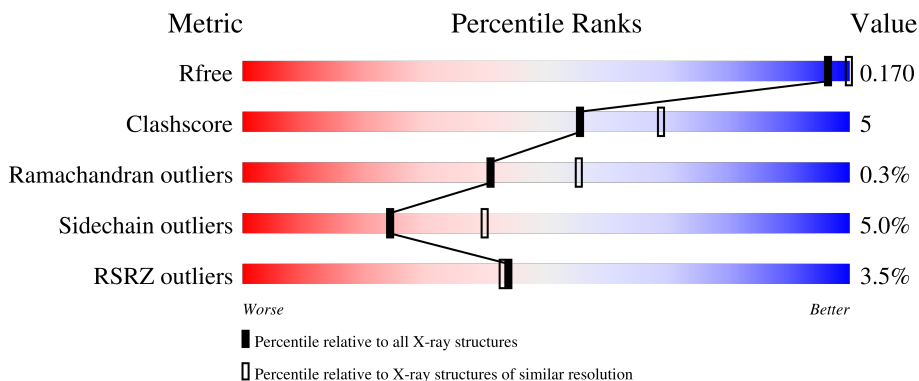
# 1 Overall quality at a glance

The following experimental techniques were used to determine the structure:

*X-RAY DIFFRACTION*

The reported resolution of this entry is 2.40 Å.

Percentile scores (ranging between 0-100) for global validation metrics of the entry are shown in the following graphic. The table shows the number of entries on which the scores are based.



Metric	Whole archive (#Entries)	Similar resolution (#Entries, resolution range(Å))
$R_{free}$	130704	3907 (2.40-2.40)
Clashscore	141614	4398 (2.40-2.40)
Ramachandran outliers	138981	4318 (2.40-2.40)
Sidechain outliers	138945	4319 (2.40-2.40)
RSRZ outliers	127900	3811 (2.40-2.40)

The table below summarises the geometric issues observed across the polymeric chains and their fit to the electron density. The red, orange, yellow and green segments of the lower bar indicate the fraction of residues that contain outliers for  $\geq 3$ , 2, 1 and 0 types of geometric quality criteria respectively. A grey segment represents the fraction of residues that are not modelled. The numeric value for each fraction is indicated below the corresponding segment, with a dot representing fractions  $\leq 5\%$ . The upper red bar (where present) indicates the fraction of residues that have poor fit to the electron density. The numeric value is given above the bar.

Mol	Chain	Length	Quality of chain
1	A	1040	 3% 86% 9% . .
1	C	1040	 3% 85% 10% . .
2	B	79	 4% 87% 9% . .
2	D	79	 80% 14% . .
2	E	79	 22% 65% 28% 5% .

The following table lists non-polymeric compounds, carbohydrate monomers and non-standard residues in protein, DNA, RNA chains that are outliers for geometric or electron-density-fit criteria:

<b>Mol</b>	<b>Type</b>	<b>Chain</b>	<b>Res</b>	<b>Chirality</b>	<b>Geometry</b>	<b>Clashes</b>	<b>Electron density</b>
4	GOL	C	1104[A]	-	-	X	-

## 2 Entry composition [i](#)

There are 6 unique types of molecules in this entry. The entry contains 36909 atoms, of which 17908 are hydrogens and 0 are deuteriums.

In the tables below, the ZeroOcc column contains the number of atoms modelled with zero occupancy, the AltConf column contains the number of residues with at least one atom in alternate conformation and the Trace column contains the number of residues modelled with at most 2 atoms.

- Molecule 1 is a protein called Ubiquitin-activating enzyme E1 1.

Mol	Chain	Residues	Atoms						ZeroOcc	AltConf	Trace
			Total	C	H	N	O	S			
1	A	1006	15830	5070	7873	1315	1548	24	1	2	0
1	C	1006	15807	5062	7863	1312	1547	23	0	0	0

There are 48 discrepancies between the modelled and reference sequences:

Chain	Residue	Modelled	Actual	Comment	Reference
A	-15	MET	-	expression tag	UNP P22515
A	-14	GLY	-	expression tag	UNP P22515
A	-13	SER	-	expression tag	UNP P22515
A	-12	SER	-	expression tag	UNP P22515
A	-11	HIS	-	expression tag	UNP P22515
A	-10	HIS	-	expression tag	UNP P22515
A	-9	HIS	-	expression tag	UNP P22515
A	-8	HIS	-	expression tag	UNP P22515
A	-7	HIS	-	expression tag	UNP P22515
A	-6	HIS	-	expression tag	UNP P22515
A	-5	SER	-	expression tag	UNP P22515
A	-4	SER	-	expression tag	UNP P22515
A	-3	GLY	-	expression tag	UNP P22515
A	-2	GLU	-	expression tag	UNP P22515
A	-1	ASN	-	expression tag	UNP P22515
A	0	LEU	-	expression tag	UNP P22515
A	1	TYR	-	expression tag	UNP P22515
A	2	PHE	-	expression tag	UNP P22515
A	3	GLN	-	expression tag	UNP P22515
A	4	GLY	-	expression tag	UNP P22515
A	5	SER	-	expression tag	UNP P22515
A	6	HIS	-	expression tag	UNP P22515
A	7	MET	-	expression tag	UNP P22515
A	8	ALA	-	expression tag	UNP P22515
C	-15	MET	-	expression tag	UNP P22515

*Continued on next page...*

*Continued from previous page...*

Chain	Residue	Modelled	Actual	Comment	Reference
C	-14	GLY	-	expression tag	UNP P22515
C	-13	SER	-	expression tag	UNP P22515
C	-12	SER	-	expression tag	UNP P22515
C	-11	HIS	-	expression tag	UNP P22515
C	-10	HIS	-	expression tag	UNP P22515
C	-9	HIS	-	expression tag	UNP P22515
C	-8	HIS	-	expression tag	UNP P22515
C	-7	HIS	-	expression tag	UNP P22515
C	-6	HIS	-	expression tag	UNP P22515
C	-5	SER	-	expression tag	UNP P22515
C	-4	SER	-	expression tag	UNP P22515
C	-3	GLY	-	expression tag	UNP P22515
C	-2	GLU	-	expression tag	UNP P22515
C	-1	ASN	-	expression tag	UNP P22515
C	0	LEU	-	expression tag	UNP P22515
C	1	TYR	-	expression tag	UNP P22515
C	2	PHE	-	expression tag	UNP P22515
C	3	GLN	-	expression tag	UNP P22515
C	4	GLY	-	expression tag	UNP P22515
C	5	SER	-	expression tag	UNP P22515
C	6	HIS	-	expression tag	UNP P22515
C	7	MET	-	expression tag	UNP P22515
C	8	ALA	-	expression tag	UNP P22515

- Molecule 2 is a protein called Uba1.

Mol	Chain	Residues	Atoms						ZeroOcc	AltConf	Trace
2	B	78	Total	C	H	N	O	S	0	0	0
			1243	381	633	107	121	1			
2	D	77	Total	C	H	N	O	S	0	1	0
			1252	383	639	109	120	1			
2	E	77	Total	C	H	N	O	S	0	0	0
			1234	378	629	106	120	1			

There are 9 discrepancies between the modelled and reference sequences:

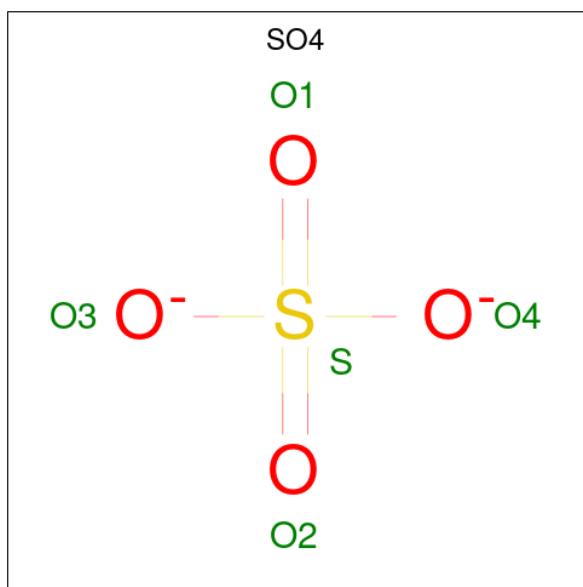
Chain	Residue	Modelled	Actual	Comment	Reference
B	-2	SER	-	expression tag	UNP P0CG63
B	-1	ALA	-	expression tag	UNP P0CG63
B	0	ALA	-	expression tag	UNP P0CG63
D	-2	SER	-	expression tag	UNP P0CG63
D	-1	ALA	-	expression tag	UNP P0CG63

*Continued on next page...*

Continued from previous page...

Chain	Residue	Modelled	Actual	Comment	Reference
D	0	ALA	-	expression tag	UNP P0CG63
E	-2	SER	-	expression tag	UNP P0CG63
E	-1	ALA	-	expression tag	UNP P0CG63
E	0	ALA	-	expression tag	UNP P0CG63

- Molecule 3 is SULFATE ION (three-letter code: SO<sub>4</sub>) (formula: O<sub>4</sub>S).



Mol	Chain	Residues	Atoms			ZeroOcc	AltConf
3	A	1	Total	O	S	0	0
			5	4	1		
3	A	1	Total	O	S	0	0
			5	4	1		
3	C	1	Total	O	S	0	0
			5	4	1		
3	C	1	Total	O	S	0	0
			5	4	1		

- Molecule 4 is GLYCEROL (three-letter code: GOL) (formula: C<sub>3</sub>H<sub>8</sub>O<sub>3</sub>).



Mol	Chain	Residues	Atoms			ZeroOcc	AltConf	
			Total	C	H			O
4	A	1	14	3	8	3	0	0
4	A	1	14	3	8	3	0	0
4	A	1	14	3	8	3	0	0
4	A	1	14	3	8	3	0	0
4	A	1	14	3	8	3	0	0
4	A	1	14	3	8	3	0	0
4	A	1	14	3	8	3	0	0
4	A	1	14	3	8	3	0	0
4	A	1	14	3	8	3	0	0
4	A	1	14	3	8	3	0	0
4	A	1	14	3	8	3	0	0
4	A	1	14	3	8	3	0	0
4	A	1	14	3	8	3	0	0
4	A	1	14	3	8	3	0	0

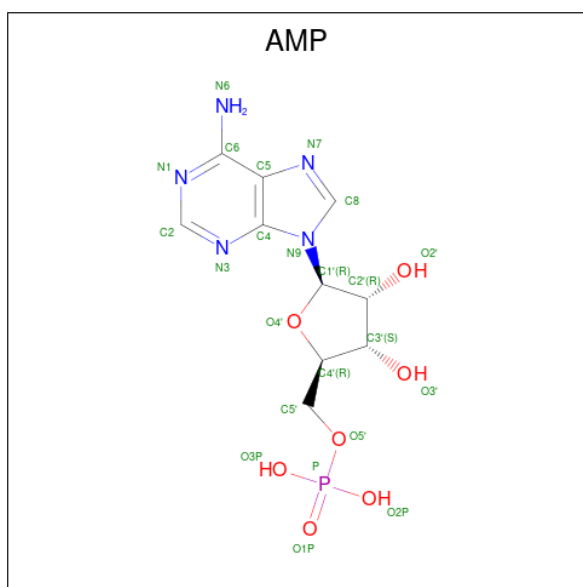
*Continued on next page...*

*Continued from previous page...*

Mol	Chain	Residues	Atoms				ZeroOcc	AltConf
4	A	1	Total	C	H	O	0	0
			14	3	8	3		
4	A	1	Total	C	H	O	0	0
			14	3	8	3		
4	A	1	Total	C	H	O	0	0
			14	3	8	3		
4	C	1	Total	C	H	O	0	0
			14	3	8	3		
4	C	1	Total	C	H	O	0	0
			14	3	8	3		
4	C	1	Total	C	H	O	0	1
			27	6	15	6		
4	C	1	Total	C	H	O	0	0
			14	3	8	3		
4	C	1	Total	C	H	O	0	1
			28	6	16	6		
4	C	1	Total	C	H	O	0	0
			14	3	8	3		
4	C	1	Total	C	H	O	0	0
			14	3	8	3		
4	C	1	Total	C	H	O	0	0
			14	3	8	3		
4	C	1	Total	C	H	O	0	0
			14	3	8	3		
4	C	1	Total	C	H	O	0	0
			14	3	8	3		
4	C	1	Total	C	H	O	0	0
			14	3	8	3		

- Molecule 5 is ADENOSINE MONOPHOSPHATE (three-letter code: AMP) (formula: C<sub>10</sub>H<sub>14</sub>N<sub>5</sub>O<sub>7</sub>P).





Mol	Chain	Residues	Atoms					ZeroOcc	AltConf	
5	B	1	Total	C	H	N	O	P	0	0
			35	10	12	5	7	1		
5	D	1	Total	C	H	N	O	P	0	0
			35	10	12	5	7	1		

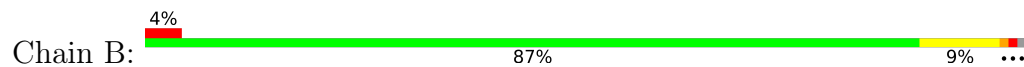
- Molecule 6 is water.

Mol	Chain	Residues	Atoms		ZeroOcc	AltConf
6	A	500	Total	O	0	0
			500	500		
6	B	35	Total	O	0	0
			35	35		
6	C	451	Total	O	0	0
			451	451		
6	D	25	Total	O	0	0
			25	25		
6	E	9	Total	O	0	0
			9	9		

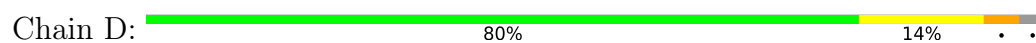




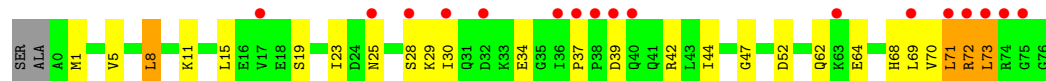
- Molecule 2: Uba1



- Molecule 2: Uba1



- Molecule 2: Uba1



## 4 Data and refinement statistics

Property	Value	Source
Space group	P 2 21 21	Depositor
Cell constants a, b, c, $\alpha$ , $\beta$ , $\gamma$	73.04Å 195.65Å 230.63Å 90.00° 90.00° 90.00°	Depositor
Resolution (Å)	48.65 – 2.40 48.65 – 2.40	Depositor EDS
% Data completeness (in resolution range)	98.0 (48.65-2.40) 99.2 (48.65-2.40)	Depositor EDS
$R_{merge}$	0.09	Depositor
$R_{sym}$	(Not available)	Depositor
$\langle I/\sigma(I) \rangle$ <sup>1</sup>	1.97 (at 2.39Å)	Xtrriage
Refinement program	PHENIX (phenix.refine: 1.8_1069)	Depositor
R, $R_{free}$	0.164 , 0.201 0.171 , 0.170	Depositor DCC
$R_{free}$ test set	3198 reflections (2.48%)	wwPDB-VP
Wilson B-factor (Å <sup>2</sup> )	40.6	Xtrriage
Anisotropy	0.272	Xtrriage
Bulk solvent $k_{sol}$ (e/Å <sup>3</sup> ), $B_{sol}$ (Å <sup>2</sup> )	0.38 , 47.8	EDS
L-test for twinning <sup>2</sup>	$\langle  L  \rangle = 0.48$ , $\langle L^2 \rangle = 0.31$	Xtrriage
Estimated twinning fraction	No twinning to report.	Xtrriage
$F_o, F_c$ correlation	0.96	EDS
Total number of atoms	36909	wwPDB-VP
Average B, all atoms (Å <sup>2</sup> )	53.0	wwPDB-VP

Xtrriage's analysis on translational NCS is as follows: *The largest off-origin peak in the Patterson function is 2.46% of the height of the origin peak. No significant pseudotranslation is detected.*

<sup>1</sup>Intensities estimated from amplitudes.

<sup>2</sup>Theoretical values of  $\langle |L| \rangle$ ,  $\langle L^2 \rangle$  for acentric reflections are 0.5, 0.333 respectively for untwinned datasets, and 0.375, 0.2 for perfectly twinned datasets.

## 5 Model quality i

### 5.1 Standard geometry i

Bond lengths and bond angles in the following residue types are not validated in this section: GOL, SO4, AMP

The Z score for a bond length (or angle) is the number of standard deviations the observed value is removed from the expected value. A bond length (or angle) with  $|Z| > 5$  is considered an outlier worth inspection. RMSZ is the root-mean-square of all Z scores of the bond lengths (or angles).

Mol	Chain	Bond lengths		Bond angles	
		RMSZ	# Z  >5	RMSZ	# Z  >5
1	A	0.55	0/8126	0.65	1/10997 (0.0%)
1	C	0.54	0/8109	0.63	1/10974 (0.0%)
2	B	0.55	0/615	0.90	3/826 (0.4%)
2	D	0.54	0/621	0.89	1/833 (0.1%)
2	E	0.50	0/610	1.07	5/819 (0.6%)
All	All	0.54	0/18081	0.68	11/24449 (0.0%)

Chiral center outliers are detected by calculating the chiral volume of a chiral center and verifying if the center is modelled as a planar moiety or with the opposite hand. A planarity outlier is detected by checking planarity of atoms in a peptide group, atoms in a mainchain group or atoms of a sidechain that are expected to be planar.

Mol	Chain	#Chirality outliers	#Planarity outliers
1	A	0	1

There are no bond length outliers.

The worst 5 of 11 bond angle outliers are listed below:

Mol	Chain	Res	Type	Atoms	Z	Observed(°)	Ideal(°)
2	E	73	LEU	CA-CB-CG	10.35	139.10	115.30
2	B	73	LEU	CA-CB-CG	-9.64	93.12	115.30
2	E	71	LEU	N-CA-C	-8.98	86.76	111.00
2	B	73	LEU	CB-CG-CD2	8.22	124.97	111.00
2	D	73	LEU	CA-CB-CG	-7.28	98.55	115.30

There are no chirality outliers.

All (1) planarity outliers are listed below:

Mol	Chain	Res	Type	Group
1	A	785	PRO	Peptide

## 5.2 Too-close contacts [i](#)

In the following table, the Non-H and H(model) columns list the number of non-hydrogen atoms and hydrogen atoms in the chain respectively. The H(added) column lists the number of hydrogen atoms added and optimized by MolProbity. The Clashes column lists the number of clashes within the asymmetric unit, whereas Symm-Clashes lists symmetry-related clashes.

Mol	Chain	Non-H	H(model)	H(added)	Clashes	Symm-Clashes
1	A	7957	7873	7857	66	0
1	C	7944	7863	7845	91	0
2	B	610	633	635	3	0
2	D	613	639	643	11	0
2	E	605	629	630	25	0
3	A	10	0	0	0	0
3	C	10	0	0	1	0
4	A	102	136	136	6	0
4	C	84	111	112	8	0
5	B	23	12	12	0	0
5	D	23	12	12	0	0
6	A	500	0	0	11	0
6	B	35	0	0	0	0
6	C	451	0	0	11	0
6	D	25	0	0	1	0
6	E	9	0	0	0	0
All	All	19001	17908	17882	184	0

The all-atom clashscore is defined as the number of clashes found per 1000 atoms (including hydrogen atoms). The all-atom clashscore for this structure is 5.

The worst 5 of 184 close contacts within the same asymmetric unit are listed below, sorted by their clash magnitude.

Atom-1	Atom-2	Interatomic distance (Å)	Clash overlap (Å)
1:A:554:ARG:NH2	6:A:1600:HOH:O	1.95	0.99
1:C:198:LEU:O	1:C:201:ASN:ND2	2.09	0.86
1:C:581:ARG:NH2	6:C:1633:HOH:O	2.20	0.73
2:D:1:MET:HE2	2:D:63:LYS:CA	2.20	0.72
4:C:1107:GOL:O3	4:C:1108:GOL:H12	1.90	0.72

There are no symmetry-related clashes.

## 5.3 Torsion angles [i](#)

### 5.3.1 Protein backbone [i](#)

In the following table, the Percentiles column shows the percent Ramachandran outliers of the chain as a percentile score with respect to all X-ray entries followed by that with respect to entries of similar resolution.

The Analysed column shows the number of residues for which the backbone conformation was analysed, and the total number of residues.

Mol	Chain	Analysed	Favoured	Allowed	Outliers	Percentiles	
1	A	1004/1040 (96%)	971 (97%)	31 (3%)	2 (0%)	47	62
1	C	1002/1040 (96%)	965 (96%)	32 (3%)	5 (0%)	29	41
2	B	76/79 (96%)	76 (100%)	0	0	100	100
2	D	76/79 (96%)	76 (100%)	0	0	100	100
2	E	75/79 (95%)	74 (99%)	1 (1%)	0	100	100
All	All	2233/2317 (96%)	2162 (97%)	64 (3%)	7 (0%)	41	55

5 of 7 Ramachandran outliers are listed below:

Mol	Chain	Res	Type
1	A	786	ASP
1	C	703	ASN
1	A	785	PRO
1	C	382	PHE
1	C	665	LYS

### 5.3.2 Protein sidechains [i](#)

In the following table, the Percentiles column shows the percent sidechain outliers of the chain as a percentile score with respect to all X-ray entries followed by that with respect to entries of similar resolution.

The Analysed column shows the number of residues for which the sidechain conformation was analysed, and the total number of residues.

Mol	Chain	Analysed	Rotameric	Outliers	Percentiles	
1	A	890/913 (98%)	849 (95%)	41 (5%)	27	43
1	C	888/913 (97%)	848 (96%)	40 (4%)	27	44
2	B	69/70 (99%)	62 (90%)	7 (10%)	7	11
2	D	70/70 (100%)	65 (93%)	5 (7%)	14	23

*Continued on next page...*

Continued from previous page...

Mol	Chain	Analysed	Rotameric	Outliers	Percentiles	
2	E	69/70 (99%)	63 (91%)	6 (9%)	10	15
All	All	1986/2036 (98%)	1887 (95%)	99 (5%)	24	40

5 of 99 residues with a non-rotameric sidechain are listed below:

Mol	Chain	Res	Type
1	C	263	LYS
1	C	517	ILE
1	C	294	LEU
1	C	408	LYS
1	C	748	ASP

Sometimes sidechains can be flipped to improve hydrogen bonding and reduce clashes. All (1) such sidechains are listed below:

Mol	Chain	Res	Type
1	C	853	GLN

### 5.3.3 RNA [i](#)

There are no RNA molecules in this entry.

## 5.4 Non-standard residues in protein, DNA, RNA chains [i](#)

There are no non-standard protein/DNA/RNA residues in this entry.

## 5.5 Carbohydrates [i](#)

There are no monosaccharides in this entry.

## 5.6 Ligand geometry [i](#)

37 ligands are modelled in this entry.

In the following table, the Counts columns list the number of bonds (or angles) for which Mogul statistics could be retrieved, the number of bonds (or angles) that are observed in the model and the number of bonds (or angles) that are defined in the Chemical Component Dictionary. The Link column lists molecule types, if any, to which the group is linked. The Z score for a bond length (or angle) is the number of standard deviations the observed value is removed from the



expected value. A bond length (or angle) with  $|Z| > 2$  is considered an outlier worth inspection. RMSZ is the root-mean-square of all Z scores of the bond lengths (or angles).

Mol	Type	Chain	Res	Link	Bond lengths			Bond angles		
					Counts	RMSZ	# $ Z  > 2$	Counts	RMSZ	# $ Z  > 2$
4	GOL	A	1114	-	5,5,5	0.32	0	5,5,5	0.43	0
4	GOL	A	1113	-	5,5,5	0.32	0	5,5,5	0.39	0
4	GOL	C	1111	-	5,5,5	0.52	0	5,5,5	0.25	0
4	GOL	A	1117	-	5,5,5	0.57	0	5,5,5	0.42	0
4	GOL	C	1113	-	5,5,5	0.42	0	5,5,5	0.31	0
4	GOL	C	1108	-	5,5,5	0.64	0	5,5,5	1.24	0
4	GOL	A	1108	-	5,5,5	0.27	0	5,5,5	0.43	0
4	GOL	C	1107	-	5,5,5	0.34	0	5,5,5	0.82	0
4	GOL	A	1112	-	5,5,5	0.36	0	5,5,5	0.26	0
3	SO4	A	1119	-	4,4,4	0.09	0	6,6,6	0.23	0
4	GOL	C	1104[B]	-	5,5,5	0.37	0	5,5,5	0.43	0
4	GOL	A	1116	-	5,5,5	0.45	0	5,5,5	0.39	0
4	GOL	A	1105	-	5,5,5	0.43	0	5,5,5	0.54	0
4	GOL	C	1106[A]	-	5,5,5	0.39	0	5,5,5	0.39	0
4	GOL	A	1103	-	5,5,5	0.41	0	5,5,5	0.54	0
4	GOL	A	1115	-	5,5,5	0.40	0	5,5,5	0.08	0
4	GOL	A	1111	-	5,5,5	0.47	0	5,5,5	0.79	0
4	GOL	C	1105	-	5,5,5	0.41	0	5,5,5	0.42	0
4	GOL	A	1118	-	5,5,5	0.48	0	5,5,5	0.82	0
4	GOL	C	1110	-	5,5,5	0.49	0	5,5,5	0.23	0
4	GOL	A	1110	-	5,5,5	0.46	0	5,5,5	0.34	0
3	SO4	C	1101	-	4,4,4	0.44	0	6,6,6	0.62	0
4	GOL	C	1109	-	5,5,5	0.42	0	5,5,5	0.27	0
4	GOL	A	1106	-	5,5,5	0.38	0	5,5,5	0.16	0
5	AMP	D	101	2	22,25,25	0.96	1 (4%)	25,38,38	1.29	1 (4%)
4	GOL	C	1106[B]	-	5,5,5	0.39	0	5,5,5	0.34	0
5	AMP	B	101	2	22,25,25	0.96	2 (9%)	25,38,38	1.27	3 (12%)
4	GOL	A	1102	-	5,5,5	0.55	0	5,5,5	0.25	0
4	GOL	A	1109	-	5,5,5	0.32	0	5,5,5	0.54	0
4	GOL	A	1107	-	5,5,5	0.21	0	5,5,5	0.79	0
3	SO4	C	1114	-	4,4,4	0.13	0	6,6,6	0.25	0
4	GOL	C	1103	-	5,5,5	0.52	0	5,5,5	0.64	0
4	GOL	C	1102	-	5,5,5	0.30	0	5,5,5	0.35	0
3	SO4	A	1101	-	4,4,4	0.13	0	6,6,6	0.37	0
4	GOL	C	1112	-	5,5,5	0.30	0	5,5,5	0.29	0
4	GOL	A	1104	-	5,5,5	0.35	0	5,5,5	0.53	0
4	GOL	C	1104[A]	-	5,5,5	0.35	0	5,5,5	0.29	0

In the following table, the Chirals column lists the number of chiral outliers, the number of chiral centers analysed, the number of these observed in the model and the number defined in the

Chemical Component Dictionary. Similar counts are reported in the Torsion and Rings columns.  
'-' means no outliers of that kind were identified.

Mol	Type	Chain	Res	Link	Chirals	Torsions	Rings
4	GOL	A	1114	-	-	2/4/4/4	-
4	GOL	A	1113	-	-	4/4/4/4	-
4	GOL	C	1111	-	-	2/4/4/4	-
4	GOL	A	1117	-	-	4/4/4/4	-
4	GOL	C	1113	-	-	3/4/4/4	-
4	GOL	C	1108	-	-	3/4/4/4	-
4	GOL	A	1108	-	-	3/4/4/4	-
4	GOL	C	1107	-	-	2/4/4/4	-
4	GOL	A	1112	-	-	4/4/4/4	-
4	GOL	C	1104[B]	-	-	2/4/4/4	-
4	GOL	A	1116	-	-	4/4/4/4	-
4	GOL	A	1105	-	-	0/4/4/4	-
4	GOL	C	1106[A]	-	-	2/4/4/4	-
4	GOL	A	1103	-	-	2/4/4/4	-
4	GOL	A	1115	-	-	4/4/4/4	-
4	GOL	A	1111	-	-	2/4/4/4	-
4	GOL	C	1105	-	-	0/4/4/4	-
4	GOL	A	1118	-	-	4/4/4/4	-
4	GOL	C	1110	-	-	4/4/4/4	-
4	GOL	A	1110	-	-	4/4/4/4	-
4	GOL	C	1109	-	-	2/4/4/4	-
4	GOL	A	1106	-	-	2/4/4/4	-
5	AMP	D	101	2	-	2/6/26/26	0/3/3/3
4	GOL	C	1106[B]	-	-	2/4/4/4	-
5	AMP	B	101	2	-	1/6/26/26	0/3/3/3
4	GOL	A	1102	-	-	2/4/4/4	-
4	GOL	A	1109	-	-	4/4/4/4	-
4	GOL	A	1107	-	-	0/4/4/4	-
4	GOL	C	1103	-	-	4/4/4/4	-
4	GOL	C	1102	-	-	4/4/4/4	-
4	GOL	C	1112	-	-	2/4/4/4	-
4	GOL	A	1104	-	-	2/4/4/4	-
4	GOL	C	1104[A]	-	-	2/4/4/4	-

All (3) bond length outliers are listed below:

Mol	Chain	Res	Type	Atoms	Z	Observed(Å)	Ideal(Å)
5	B	101	AMP	C5-C4	2.26	1.46	1.40
5	D	101	AMP	C5-C4	2.16	1.46	1.40
5	B	101	AMP	C2-N3	2.05	1.35	1.32

All (4) bond angle outliers are listed below:

Mol	Chain	Res	Type	Atoms	Z	Observed(°)	Ideal(°)
5	D	101	AMP	N3-C2-N1	-3.89	122.59	128.68
5	B	101	AMP	N3-C2-N1	-3.88	122.61	128.68
5	B	101	AMP	O3P-P-O2P	2.32	116.51	107.64
5	B	101	AMP	C4-C5-N7	-2.10	107.21	109.40

There are no chirality outliers.

5 of 84 torsion outliers are listed below:

Mol	Chain	Res	Type	Atoms
4	A	1102	GOL	C1-C2-C3-O3
4	A	1102	GOL	O2-C2-C3-O3
4	A	1103	GOL	O1-C1-C2-C3
4	A	1106	GOL	O1-C1-C2-C3
4	A	1108	GOL	O1-C1-C2-C3

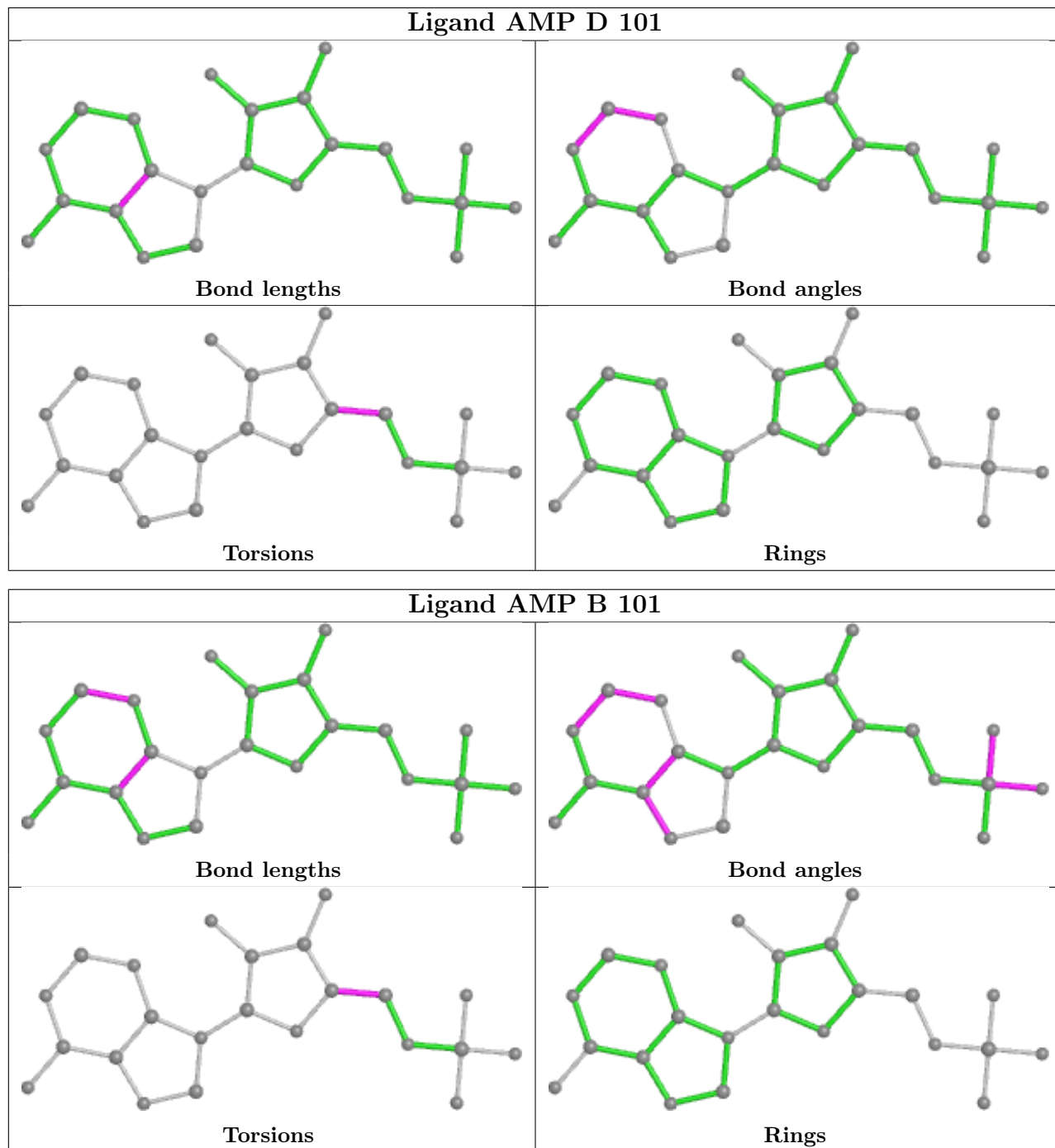
There are no ring outliers.

9 monomers are involved in 15 short contacts:

Mol	Chain	Res	Type	Clashes	Symm-Clashes
4	C	1108	GOL	1	0
4	C	1107	GOL	1	0
4	A	1112	GOL	3	0
4	C	1104[B]	GOL	1	0
4	A	1116	GOL	1	0
4	A	1118	GOL	1	0
3	C	1114	SO4	1	0
4	A	1104	GOL	1	0
4	C	1104[A]	GOL	6	0

The following is a two-dimensional graphical depiction of Mogul quality analysis of bond lengths, bond angles, torsion angles, and ring geometry for all instances of the Ligand of Interest. In addition, ligands with molecular weight > 250 and outliers as shown on the validation Tables will also be included. For torsion angles, if less than 5% of the Mogul distribution of torsion angles is within 10 degrees of the torsion angle in question, then that torsion angle is considered an outlier.

Any bond that is central to one or more torsion angles identified as an outlier by Mogul will be highlighted in the graph. For rings, the root-mean-square deviation (RMSD) between the ring in question and similar rings identified by Mogul is calculated over all ring torsion angles. If the average RMSD is greater than 60 degrees and the minimal RMSD between the ring in question and any Mogul-identified rings is also greater than 60 degrees, then that ring is considered an outlier. The outliers are highlighted in purple. The color gray indicates Mogul did not find sufficient equivalents in the CSD to analyse the geometry.



## 5.7 Other polymers [i](#)

There are no such residues in this entry.

## 5.8 Polymer linkage issues [i](#)

There are no chain breaks in this entry.

## 6 Fit of model and data [i](#)

### 6.1 Protein, DNA and RNA chains [i](#)

In the following table, the column labelled ‘#RSRZ> 2’ contains the number (and percentage) of RSRZ outliers, followed by percent RSRZ outliers for the chain as percentile scores relative to all X-ray entries and entries of similar resolution. The OWAB column contains the minimum, median, 95<sup>th</sup> percentile and maximum values of the occupancy-weighted average B-factor per residue. The column labelled ‘Q< 0.9’ lists the number of (and percentage) of residues with an average occupancy less than 0.9.

Mol	Chain	Analysed	<RSRZ>	#RSRZ>2	OWAB(Å <sup>2</sup> )	Q<0.9
1	A	1006/1040 (96%)	-0.02	30 (2%) 50 49	22, 41, 86, 174	0
1	C	1006/1040 (96%)	-0.02	28 (2%) 53 51	24, 41, 87, 164	0
2	B	78/79 (98%)	0.31	3 (3%) 40 39	29, 47, 81, 96	0
2	D	77/79 (97%)	-0.07	0 100 100	29, 51, 88, 98	0
2	E	77/79 (97%)	1.24	17 (22%) 0 0	40, 80, 136, 162	0
All	All	2244/2317 (96%)	0.03	78 (3%) 44 43	22, 42, 92, 174	0

The worst 5 of 78 RSRZ outliers are listed below:

Mol	Chain	Res	Type	RSRZ
1	A	787	PRO	9.0
2	E	73	LEU	8.5
1	C	786	ASP	7.5
1	A	785	PRO	6.5
2	E	74	ARG	6.3

### 6.2 Non-standard residues in protein, DNA, RNA chains [i](#)

There are no non-standard protein/DNA/RNA residues in this entry.

### 6.3 Carbohydrates [i](#)

There are no monosaccharides in this entry.

### 6.4 Ligands [i](#)

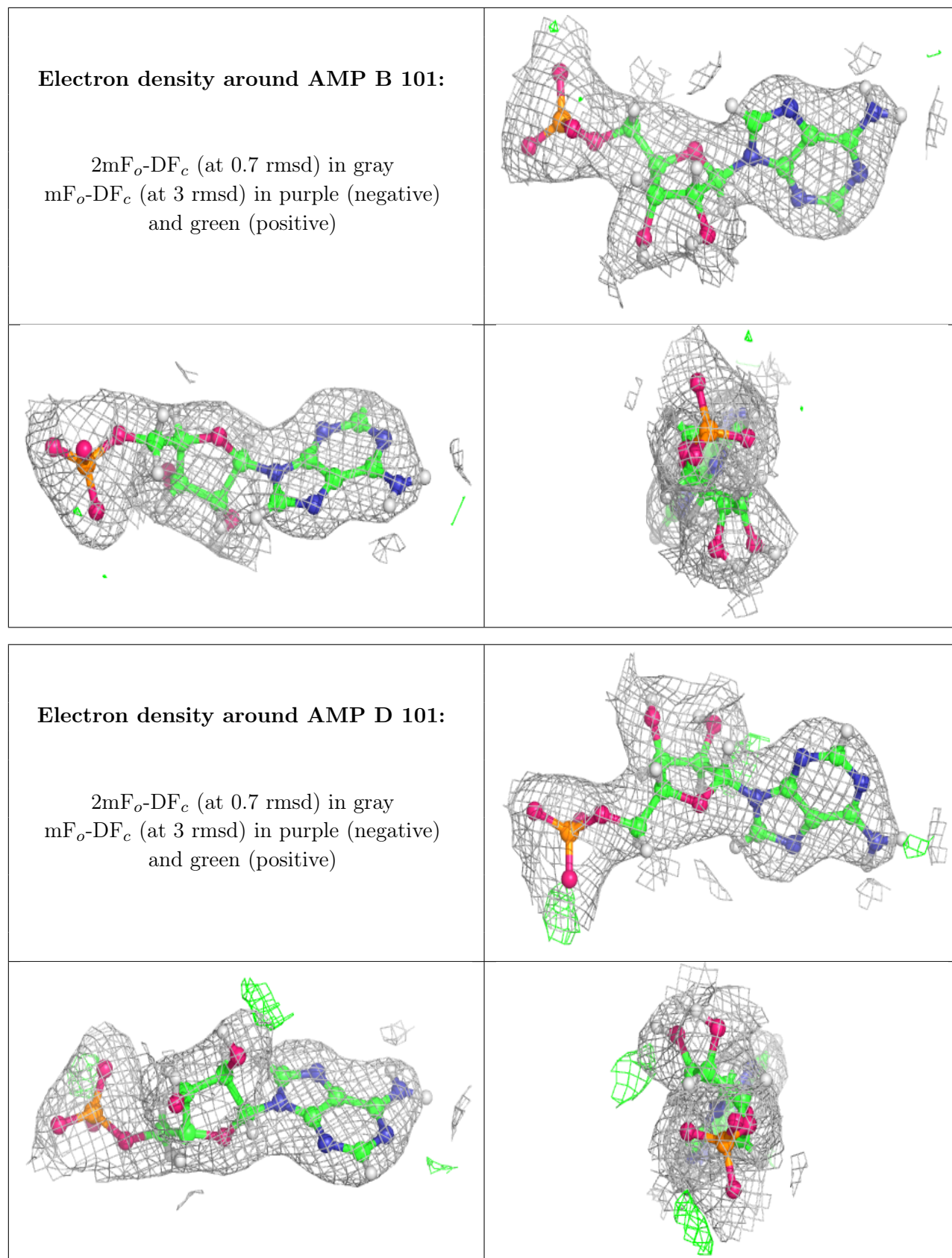
In the following table, the Atoms column lists the number of modelled atoms in the group and the number defined in the chemical component dictionary. The B-factors column lists the minimum,

median, 95<sup>th</sup> percentile and maximum values of B factors of atoms in the group. The column labelled 'Q< 0.9' lists the number of atoms with occupancy less than 0.9.

Mol	Type	Chain	Res	Atoms	RSCC	RSR	B-factors(Å <sup>2</sup> )	Q<0.9
4	GOL	C	1111	6/6	0.71	0.34	85,106,121,127	0
4	GOL	A	1111	6/6	0.75	0.26	71,85,100,100	0
4	GOL	A	1116	6/6	0.77	0.25	85,102,104,106	0
4	GOL	C	1107	6/6	0.80	0.23	61,78,91,95	0
4	GOL	A	1118	6/6	0.80	0.32	67,81,82,83	0
4	GOL	A	1112	6/6	0.82	0.24	71,85,96,101	0
4	GOL	A	1105	6/6	0.83	0.18	64,77,80,82	0
4	GOL	A	1115	6/6	0.84	0.13	92,110,112,112	0
4	GOL	C	1112	6/6	0.84	0.21	94,113,119,121	0
4	GOL	A	1109	6/6	0.85	0.27	65,78,82,84	0
4	GOL	C	1106[B]	6/6	0.86	0.19	45,54,60,60	14
4	GOL	C	1106[A]	6/6	0.86	0.19	44,52,60,60	14
4	GOL	C	1103	6/6	0.88	0.21	53,63,65,65	0
4	GOL	C	1104[A]	6/6	0.88	0.20	67,69,82,83	13
4	GOL	C	1108	6/6	0.88	0.27	56,67,68,69	0
4	GOL	C	1104[B]	6/6	0.88	0.20	65,78,83,84	14
4	GOL	A	1107	6/6	0.88	0.19	54,64,70,73	0
4	GOL	A	1106	6/6	0.89	0.21	71,85,97,101	0
4	GOL	A	1104	6/6	0.89	0.26	56,68,72,76	0
4	GOL	A	1108	6/6	0.89	0.31	67,80,87,88	0
4	GOL	A	1102	6/6	0.89	0.23	50,60,66,70	0
4	GOL	A	1117	6/6	0.89	0.26	89,107,110,112	0
4	GOL	C	1110	6/6	0.90	0.23	65,78,88,89	0
4	GOL	A	1113	6/6	0.92	0.22	73,88,92,94	0
4	GOL	C	1109	6/6	0.92	0.24	62,75,82,86	0
4	GOL	A	1114	6/6	0.92	0.17	77,93,97,98	0
3	SO4	C	1114	5/5	0.92	0.17	108,109,109,109	0
3	SO4	A	1119	5/5	0.92	0.28	96,97,98,100	0
4	GOL	C	1105	6/6	0.93	0.18	58,69,72,73	0
4	GOL	C	1113	6/6	0.93	0.23	59,70,77,79	0
4	GOL	A	1110	6/6	0.94	0.26	68,82,88,91	0
3	SO4	C	1101	5/5	0.97	0.21	45,46,48,50	0
4	GOL	A	1103	6/6	0.97	0.22	43,52,57,57	0
4	GOL	C	1102	6/6	0.98	0.17	41,49,50,51	0
5	AMP	B	101	23/23	0.98	0.14	22,33,41,42	0
5	AMP	D	101	23/23	0.98	0.16	20,34,44,49	0
3	SO4	A	1101	5/5	1.00	0.18	39,39,40,43	0

The following is a graphical depiction of the model fit to experimental electron density of all instances of the Ligand of Interest. In addition, ligands with molecular weight > 250 and outliers as shown on the geometry validation Tables will also be included. Each fit is shown from different

orientation to approximate a three-dimensional view.





## 6.5 Other polymers

There are no such residues in this entry.