



Full wwPDB X-ray Structure Validation Report ⓘ

Aug 8, 2023 – 08:29 AM EDT

PDB ID : 1NNS
Title : L-asparaginase of E. coli in C2 space group and 1.95 Å resolution
Authors : Sanches, M.; Barbosa, J.A.R.G.; de Oliveira, R.T.; Neto, J.A.A.; Polikarpov, I.
Deposited on : 2003-01-14
Resolution : 1.95 Å (reported)

This is a Full wwPDB X-ray Structure Validation Report for a publicly released PDB entry.

We welcome your comments at validation@mail.wwpdb.org

A user guide is available at

<https://www.wwpdb.org/validation/2017/XrayValidationReportHelp>

with specific help available everywhere you see the ⓘ symbol.

The types of validation reports are described at

<http://www.wwpdb.org/validation/2017/FAQs#types>.

The following versions of software and data (see [references ⓘ](#)) were used in the production of this report:

MolProbity : 4.02b-467
Mogul : 1.8.5 (274361), CSD as541be (2020)
Xtriage (Phenix) : 1.13
EDS : 2.35
Percentile statistics : 20191225.v01 (using entries in the PDB archive December 25th 2019)
Refmac : 5.8.0158
CCP4 : 7.0.044 (Gargrove)
Ideal geometry (proteins) : Engh & Huber (2001)
Ideal geometry (DNA, RNA) : Parkinson et al. (1996)
Validation Pipeline (wwPDB-VP) : 2.35

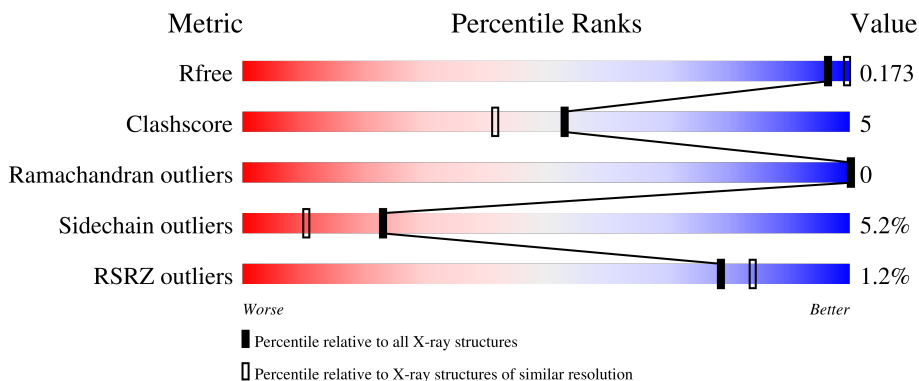
1 Overall quality at a glance

The following experimental techniques were used to determine the structure:

X-RAY DIFFRACTION

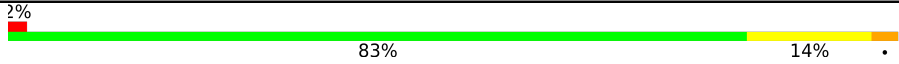
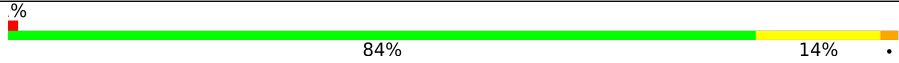
The reported resolution of this entry is 1.95 Å.

Percentile scores (ranging between 0-100) for global validation metrics of the entry are shown in the following graphic. The table shows the number of entries on which the scores are based.



Metric	Whole archive (#Entries)	Similar resolution (#Entries, resolution range(Å))
R_{free}	130704	2580 (1.96-1.96)
Clashscore	141614	2705 (1.96-1.96)
Ramachandran outliers	138981	2678 (1.96-1.96)
Sidechain outliers	138945	2678 (1.96-1.96)
RSRZ outliers	127900	2539 (1.96-1.96)

The table below summarises the geometric issues observed across the polymeric chains and their fit to the electron density. The red, orange, yellow and green segments of the lower bar indicate the fraction of residues that contain outliers for ≥ 3 , 2, 1 and 0 types of geometric quality criteria respectively. A grey segment represents the fraction of residues that are not modelled. The numeric value for each fraction is indicated below the corresponding segment, with a dot representing fractions $\leq 5\%$. The upper red bar (where present) indicates the fraction of residues that have poor fit to the electron density. The numeric value is given above the bar.

Mol	Chain	Length	Quality of chain
1	A	326	
1	B	326	

2 Entry composition [i](#)

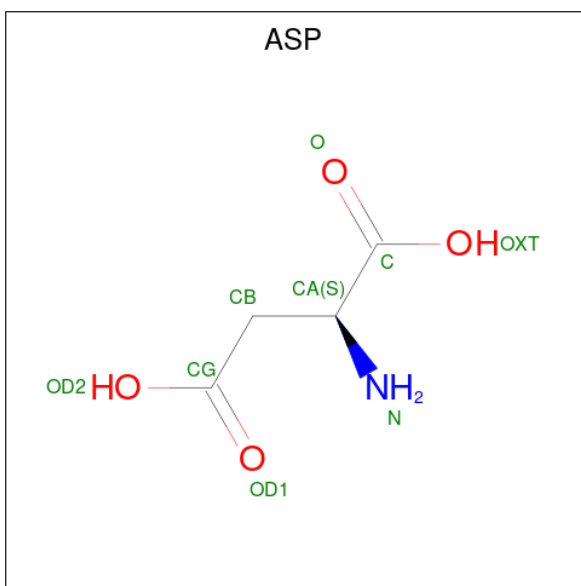
There are 3 unique types of molecules in this entry. The entry contains 5209 atoms, of which 0 are hydrogens and 0 are deuteriums.

In the tables below, the ZeroOcc column contains the number of atoms modelled with zero occupancy, the AltConf column contains the number of residues with at least one atom in alternate conformation and the Trace column contains the number of residues modelled with at most 2 atoms.

- Molecule 1 is a protein called L-asparaginase II.

Mol	Chain	Residues	Atoms					ZeroOcc	AltConf	Trace
			Total	C	N	O	S			
1	A	326	Total 2431	C 1517	N 415	O 491	S 8	0	0	0
1	B	326	Total 2431	C 1517	N 415	O 491	S 8	0	0	0

- Molecule 2 is ASPARTIC ACID (three-letter code: ASP) (formula: C₄H₇NO₄).



Mol	Chain	Residues	Atoms				ZeroOcc	AltConf
			Total	C	N	O		
2	A	1	Total 9	C 4	N 1	O 4	0	0
2	B	1	Total 9	C 4	N 1	O 4	0	0

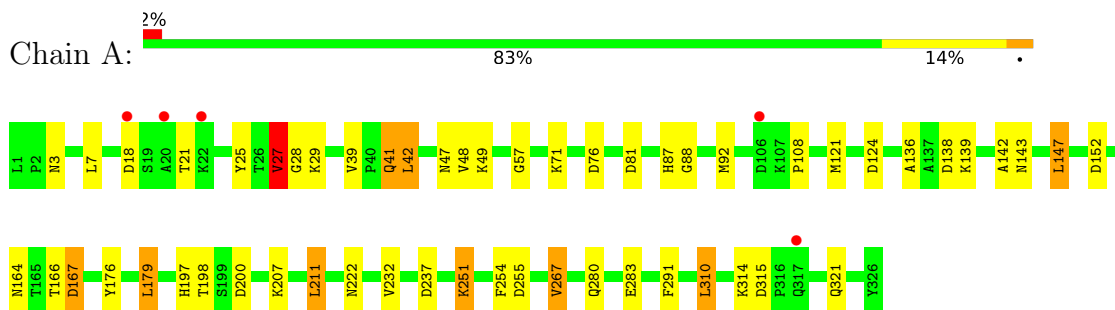
- Molecule 3 is water.

Mol	Chain	Residues	Atoms		ZeroOcc	AltConf
3	A	145	Total 145	O 145	0	0
3	B	184	Total 184	O 184	0	0

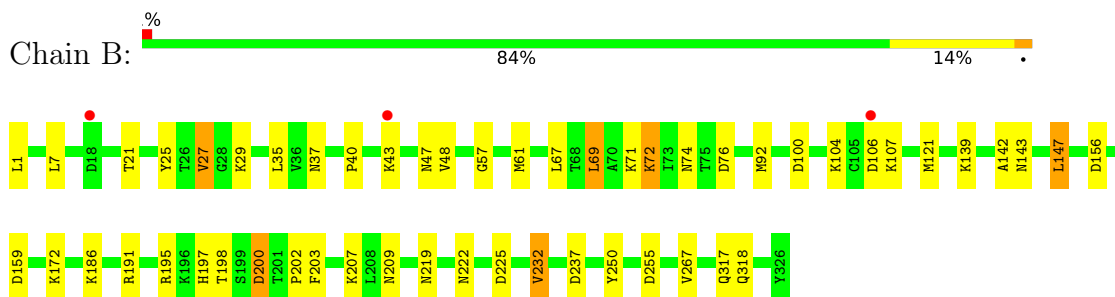
3 Residue-property plots [i](#)

These plots are drawn for all protein, RNA, DNA and oligosaccharide chains in the entry. The first graphic for a chain summarises the proportions of the various outlier classes displayed in the second graphic. The second graphic shows the sequence view annotated by issues in geometry and electron density. Residues are color-coded according to the number of geometric quality criteria for which they contain at least one outlier: green = 0, yellow = 1, orange = 2 and red = 3 or more. A red dot above a residue indicates a poor fit to the electron density ($RSRZ > 2$). Stretches of 2 or more consecutive residues without any outlier are shown as a green connector. Residues present in the sample, but not in the model, are shown in grey.

- Molecule 1: L-asparaginase II



- Molecule 1: L-asparaginase II



4 Data and refinement statistics

Property	Value	Source
Space group	C 1 2 1	Depositor
Cell constants a, b, c, α , β , γ	76.30Å 134.62Å 64.87Å 90.00° 110.51° 90.00°	Depositor
Resolution (Å)	12.97 – 1.95 12.97 – 1.95	Depositor EDS
% Data completeness (in resolution range)	91.8 (12.97-1.95) 91.8 (12.97-1.95)	Depositor EDS
R_{merge}	0.05	Depositor
R_{sym}	(Not available)	Depositor
$\langle I/\sigma(I) \rangle$ ¹	2.37 (at 1.95Å)	Xtrriage
Refinement program	REFMAC 5.1.09	Depositor
R, R_{free}	0.130 , 0.171 0.132 , 0.173	Depositor DCC
R_{free} test set	2045 reflections (5.01%)	wwPDB-VP
Wilson B-factor (Å ²)	25.0	Xtrriage
Anisotropy	0.081	Xtrriage
Bulk solvent k_{sol} (e/Å ³), B_{sol} (Å ²)	0.36 , 56.1	EDS
L-test for twinning ²	$\langle L \rangle = 0.50$, $\langle L^2 \rangle = 0.34$	Xtrriage
Estimated twinning fraction	No twinning to report.	Xtrriage
F_o, F_c correlation	0.98	EDS
Total number of atoms	5209	wwPDB-VP
Average B, all atoms (Å ²)	18.0	wwPDB-VP

Xtrriage's analysis on translational NCS is as follows: *The largest off-origin peak in the Patterson function is 7.99% of the height of the origin peak. No significant pseudotranslation is detected.*

¹Intensities estimated from amplitudes.

²Theoretical values of $\langle |L| \rangle$, $\langle L^2 \rangle$ for acentric reflections are 0.5, 0.333 respectively for untwinned datasets, and 0.375, 0.2 for perfectly twinned datasets.

5 Model quality i

5.1 Standard geometry i

The Z score for a bond length (or angle) is the number of standard deviations the observed value is removed from the expected value. A bond length (or angle) with $|Z| > 5$ is considered an outlier worth inspection. RMSZ is the root-mean-square of all Z scores of the bond lengths (or angles).

Mol	Chain	Bond lengths		Bond angles	
		RMSZ	# Z >5	RMSZ	# Z >5
1	A	1.14	12/2468 (0.5%)	1.12	19/3361 (0.6%)
1	B	1.21	6/2468 (0.2%)	1.14	20/3361 (0.6%)
All	All	1.18	18/4936 (0.4%)	1.13	39/6722 (0.6%)

All (18) bond length outliers are listed below:

Mol	Chain	Res	Type	Atoms	Z	Observed(Å)	Ideal(Å)
1	A	267	VAL	CB-CG2	-8.81	1.34	1.52
1	B	48	VAL	CB-CG2	-7.28	1.37	1.52
1	B	48	VAL	CB-CG1	-7.11	1.38	1.52
1	A	267	VAL	CB-CG1	-6.72	1.38	1.52
1	B	232	VAL	CB-CG1	-6.57	1.39	1.52
1	B	142	ALA	CA-CB	6.29	1.65	1.52
1	A	232	VAL	CB-CG1	-5.86	1.40	1.52
1	A	27	VAL	CB-CG2	-5.57	1.41	1.52
1	B	232	VAL	CB-CG2	-5.57	1.41	1.52
1	A	25	TYR	CG-CD2	-5.47	1.32	1.39
1	A	48	VAL	CB-CG1	-5.32	1.41	1.52
1	A	176	TYR	CD1-CE1	5.31	1.47	1.39
1	A	232	VAL	CB-CG2	-5.23	1.41	1.52
1	A	283	GLU	CD-OE2	-5.19	1.20	1.25
1	A	48	VAL	CB-CG2	-5.16	1.42	1.52
1	A	251	LYS	CB-CG	-5.09	1.38	1.52
1	A	211	LEU	CG-CD1	-5.02	1.33	1.51
1	B	47	ASN	CB-CG	-5.01	1.39	1.51

All (39) bond angle outliers are listed below:

Mol	Chain	Res	Type	Atoms	Z	Observed(°)	Ideal(°)
1	B	139	LYS	CD-CE-NZ	-10.59	87.36	111.70
1	A	179	LEU	CB-CG-CD1	9.23	126.70	111.00
1	A	138	ASP	CB-CG-OD2	7.94	125.45	118.30
1	B	191	ARG	NE-CZ-NH2	-7.81	116.39	120.30

Continued on next page...

Continued from previous page...

Mol	Chain	Res	Type	Atoms	Z	Observed(°)	Ideal(°)
1	A	147	LEU	CB-CG-CD1	7.33	123.45	111.00
1	A	310	LEU	CB-CG-CD2	7.32	123.45	111.00
1	A	167	ASP	CB-CG-OD1	7.07	124.66	118.30
1	B	200	ASP	CB-CG-OD1	7.00	124.60	118.30
1	A	76	ASP	CB-CG-OD2	7.00	124.60	118.30
1	B	72	LYS	CD-CE-NZ	6.93	127.64	111.70
1	A	310	LEU	CB-CG-CD1	6.56	122.16	111.00
1	B	159	ASP	CB-CG-OD2	6.52	124.17	118.30
1	B	147	LEU	CB-CG-CD1	6.50	122.04	111.00
1	A	200	ASP	CB-CG-OD1	6.19	123.87	118.30
1	B	48	VAL	CG1-CB-CG2	-6.19	100.99	110.90
1	B	195	ARG	NE-CZ-NH2	-6.19	117.21	120.30
1	B	156	ASP	CB-CG-OD2	6.17	123.86	118.30
1	B	76	ASP	CB-CG-OD2	5.93	123.64	118.30
1	B	267	VAL	CG1-CB-CG2	-5.82	101.59	110.90
1	B	237	ASP	CB-CG-OD2	5.82	123.54	118.30
1	A	232	VAL	CG1-CB-CG2	-5.82	101.60	110.90
1	A	18	ASP	CB-CG-OD2	5.71	123.44	118.30
1	A	92	MET	CG-SD-CE	5.62	109.20	100.20
1	A	267	VAL	CA-CB-CG2	5.58	119.27	110.90
1	A	179	LEU	CB-CG-CD2	5.57	120.47	111.00
1	A	237	ASP	CB-CG-OD2	5.57	123.31	118.30
1	A	48	VAL	CG1-CB-CG2	-5.56	102.01	110.90
1	B	255	ASP	CB-CG-OD2	5.55	123.30	118.30
1	B	69	LEU	CB-CG-CD1	5.53	120.41	111.00
1	B	92	MET	CG-SD-CE	5.47	108.96	100.20
1	B	225	ASP	CB-CG-OD1	5.35	123.11	118.30
1	B	100	ASP	CB-CG-OD1	5.26	123.03	118.30
1	B	61	MET	CG-SD-CE	5.14	108.42	100.20
1	B	107	LYS	CD-CE-NZ	-5.09	99.99	111.70
1	B	106	ASP	CB-CG-OD2	5.06	122.85	118.30
1	A	124	ASP	CB-CG-OD2	5.05	122.85	118.30
1	A	152	ASP	CB-CG-OD2	5.02	122.82	118.30
1	A	315	ASP	CB-CG-OD2	5.02	122.82	118.30
1	A	81	ASP	CB-CG-OD2	5.02	122.81	118.30

There are no chirality outliers.

There are no planarity outliers.

5.2 Too-close contacts [i](#)

In the following table, the Non-H and H(model) columns list the number of non-hydrogen atoms and hydrogen atoms in the chain respectively. The H(added) column lists the number of hydrogen atoms added and optimized by MolProbity. The Clashes column lists the number of clashes within the asymmetric unit, whereas Symm-Clashes lists symmetry-related clashes.

Mol	Chain	Non-H	H(model)	H(added)	Clashes	Symm-Clashes
1	A	2431	0	2424	23	2
1	B	2431	0	2424	30	0
2	A	9	0	3	0	0
2	B	9	0	3	2	0
3	A	145	0	0	7	2
3	B	184	0	0	11	4
All	All	5209	0	4854	53	6

The all-atom clashscore is defined as the number of clashes found per 1000 atoms (including hydrogen atoms). The all-atom clashscore for this structure is 5.

All (53) close contacts within the same asymmetric unit are listed below, sorted by their clash magnitude.

Atom-1	Atom-2	Interatomic distance (Å)	Clash overlap (Å)
1:B:209:ASN:HB2	3:B:605:HOH:O	1.25	1.30
1:B:202:PRO:HG2	3:B:608:HOH:O	1.31	1.27
1:B:318:GLN:HG2	3:B:607:HOH:O	1.30	1.25
1:A:314:LYS:NZ	3:A:563:HOH:O	1.95	0.95
1:B:37:ASN:HB2	3:B:598:HOH:O	1.69	0.92
1:B:74:ASN:HD21	1:B:104:LYS:H	1.19	0.90
1:B:27:VAL:HG21	1:B:57:GLY:HA2	1.59	0.83
1:B:200:ASP:HB3	3:B:595:HOH:O	1.85	0.76
1:A:136:ALA:O	3:A:507:HOH:O	2.04	0.76
1:B:27:VAL:HG21	1:B:57:GLY:CA	2.15	0.75
1:B:74:ASN:ND2	1:B:104:LYS:H	1.85	0.73
1:A:3:ASN:ND2	1:A:47:ASN:ND2	2.36	0.73
1:B:27:VAL:HG11	2:B:428:ASP:HA	1.74	0.70
1:A:3:ASN:ND2	1:A:47:ASN:HD22	1.92	0.67
1:B:27:VAL:CG2	1:B:57:GLY:HA2	2.25	0.66
1:B:27:VAL:CG2	1:B:57:GLY:CA	2.73	0.66
1:A:87:HIS:HD2	1:A:88:GLY:O	1.79	0.66
1:A:197:HIS:HE1	3:A:543:HOH:O	1.78	0.66
1:A:27:VAL:HG21	1:A:57:GLY:HA2	1.78	0.64
1:B:203:PHE:CD1	3:B:608:HOH:O	2.49	0.64
1:A:164:ASN:HD22	1:A:167:ASP:H	1.46	0.63

Continued on next page...

Continued from previous page...

Atom-1	Atom-2	Interatomic distance (Å)	Clash overlap (Å)
3:A:539:HOH:O	1:B:172:LYS:HE3	1.98	0.63
1:B:203:PHE:CE1	3:B:608:HOH:O	2.52	0.63
1:B:25:TYR:HE1	1:B:27:VAL:HG12	1.63	0.62
1:A:27:VAL:CG2	1:A:57:GLY:HA2	2.31	0.61
1:B:40:PRO:O	1:B:43:LYS:HG2	2.05	0.57
1:B:21:THR:HG22	1:B:121:MET:HE3	1.87	0.56
1:A:21:THR:HG22	1:A:121:MET:HE3	1.88	0.55
1:A:39:VAL:HB	1:A:42:LEU:HD22	1.90	0.53
1:A:3:ASN:HD21	1:A:47:ASN:HD22	1.54	0.53
1:B:202:PRO:CG	3:B:608:HOH:O	2.14	0.51
1:A:164:ASN:ND2	1:A:166:THR:H	2.09	0.49
1:B:219:ASN:HD22	1:B:250:TYR:H	1.61	0.49
1:A:197:HIS:HD2	1:A:198:THR:OG1	1.96	0.49
1:B:74:ASN:HD21	1:B:104:LYS:N	1.99	0.48
1:B:197:HIS:HD2	1:B:198:THR:OG1	1.95	0.48
1:A:164:ASN:HD22	1:A:166:THR:H	1.63	0.47
1:A:27:VAL:HG23	1:A:28:GLY:N	2.28	0.47
1:A:321:GLN:NE2	1:A:321:GLN:HA	2.29	0.47
1:A:41:GLN:H	1:A:41:GLN:NE2	2.14	0.46
1:B:318:GLN:CG	3:B:607:HOH:O	2.16	0.46
1:B:186:LYS:HB2	1:B:186:LYS:HE2	1.85	0.43
1:B:27:VAL:HG21	1:B:57:GLY:HA3	1.96	0.43
1:A:108:PRO:HG2	3:A:507:HOH:O	2.18	0.43
1:B:143:ASN:HB3	3:B:603:HOH:O	2.19	0.43
1:A:142:ALA:O	1:A:143:ASN:HB2	2.19	0.43
1:B:67:LEU:O	1:B:71:LYS:HG3	2.19	0.42
1:A:267:VAL:HG22	1:A:291:PHE:CD1	2.55	0.42
1:B:202:PRO:CD	3:B:608:HOH:O	2.59	0.41
1:A:251:LYS:HE2	3:A:534:HOH:O	2.20	0.41
1:B:27:VAL:HG11	2:B:428:ASP:CA	2.48	0.41
1:A:21:THR:HG22	1:A:121:MET:CE	2.51	0.40
3:A:539:HOH:O	1:B:172:LYS:CE	2.65	0.40

All (6) symmetry-related close contacts are listed below. The label for Atom-2 includes the symmetry operator and encoded unit-cell translations to be applied.

Atom-1	Atom-2	Interatomic distance (Å)	Clash overlap (Å)
3:B:590:HOH:O	3:B:590:HOH:O[2_656]	1.43	0.77
1:A:47:ASN:OD1	1:A:47:ASN:OD1[2_555]	1.58	0.62
3:B:481:HOH:O	3:B:591:HOH:O[2_656]	1.61	0.59

Continued on next page...

Continued from previous page...

Atom-1	Atom-2	Interatomic distance (Å)	Clash overlap (Å)
3:A:505:HOH:O	3:A:505:HOH:O[2_656]	1.98	0.22
1:A:255:ASP:CB	3:B:593:HOH:O[4_646]	2.14	0.06
3:A:531:HOH:O	3:B:602:HOH:O[2_656]	2.14	0.06

5.3 Torsion angles [i](#)

5.3.1 Protein backbone [i](#)

In the following table, the Percentiles column shows the percent Ramachandran outliers of the chain as a percentile score with respect to all X-ray entries followed by that with respect to entries of similar resolution.

The Analysed column shows the number of residues for which the backbone conformation was analysed, and the total number of residues.

Mol	Chain	Analysed	Favoured	Allowed	Outliers	Percentiles	
1	A	324/326 (99%)	320 (99%)	4 (1%)	0	100	100
1	B	324/326 (99%)	319 (98%)	5 (2%)	0	100	100
All	All	648/652 (99%)	639 (99%)	9 (1%)	0	100	100

There are no Ramachandran outliers to report.

5.3.2 Protein sidechains [i](#)

In the following table, the Percentiles column shows the percent sidechain outliers of the chain as a percentile score with respect to all X-ray entries followed by that with respect to entries of similar resolution.

The Analysed column shows the number of residues for which the sidechain conformation was analysed, and the total number of residues.

Mol	Chain	Analysed	Rotameric	Outliers	Percentiles	
1	A	266/266 (100%)	250 (94%)	16 (6%)	19	8
1	B	266/266 (100%)	254 (96%)	12 (4%)	27	15
All	All	532/532 (100%)	504 (95%)	28 (5%)	23	10

All (28) residues with a non-rotameric sidechain are listed below:

Mol	Chain	Res	Type
1	A	7	LEU
1	A	27	VAL
1	A	29	LYS
1	A	41	GLN
1	A	42	LEU
1	A	49	LYS
1	A	71	LYS
1	A	139	LYS
1	A	147	LEU
1	A	179	LEU
1	A	207	LYS
1	A	211	LEU
1	A	222	ASN
1	A	254	PHE
1	A	280	GLN
1	A	310	LEU
1	B	1	LEU
1	B	7	LEU
1	B	27	VAL
1	B	29	LYS
1	B	35	LEU
1	B	69	LEU
1	B	72	LYS
1	B	147	LEU
1	B	207	LYS
1	B	222	ASN
1	B	232	VAL
1	B	317	GLN

Sometimes sidechains can be flipped to improve hydrogen bonding and reduce clashes. All (18) such sidechains are listed below:

Mol	Chain	Res	Type
1	A	3	ASN
1	A	41	GLN
1	A	64	ASN
1	A	87	HIS
1	A	164	ASN
1	A	190	GLN
1	A	197	HIS
1	A	209	ASN
1	A	321	GLN
1	B	34	ASN
1	B	37	ASN

Continued on next page...

Continued from previous page...

Mol	Chain	Res	Type
1	B	64	ASN
1	B	74	ASN
1	B	131	ASN
1	B	151	ASN
1	B	197	HIS
1	B	219	ASN
1	B	248	ASN

5.3.3 RNA [i](#)

There are no RNA molecules in this entry.

5.4 Non-standard residues in protein, DNA, RNA chains [i](#)

There are no non-standard protein/DNA/RNA residues in this entry.

5.5 Carbohydrates [i](#)

There are no monosaccharides in this entry.

5.6 Ligand geometry [i](#)

2 ligands are modelled in this entry.

In the following table, the Counts columns list the number of bonds (or angles) for which Mogul statistics could be retrieved, the number of bonds (or angles) that are observed in the model and the number of bonds (or angles) that are defined in the Chemical Component Dictionary. The Link column lists molecule types, if any, to which the group is linked. The Z score for a bond length (or angle) is the number of standard deviations the observed value is removed from the expected value. A bond length (or angle) with $|Z| > 2$ is considered an outlier worth inspection. RMSZ is the root-mean-square of all Z scores of the bond lengths (or angles).

Mol	Type	Chain	Res	Link	Bond lengths			Bond angles		
					Counts	RMSZ	$\# Z > 2$	Counts	RMSZ	$\# Z > 2$
2	ASP	A	427	-	6,8,8	1.36	0	8,10,10	1.45	2 (25%)
2	ASP	B	428	-	6,8,8	1.18	0	8,10,10	2.86	3 (37%)

In the following table, the Chirals column lists the number of chiral outliers, the number of chiral centers analysed, the number of these observed in the model and the number defined in the Chemical Component Dictionary. Similar counts are reported in the Torsion and Rings columns.

'-' means no outliers of that kind were identified.

Mol	Type	Chain	Res	Link	Chirals	Torsions	Rings
2	ASP	A	427	-	-	2/8/8/8	-
2	ASP	B	428	-	-	2/8/8/8	-

There are no bond length outliers.

All (5) bond angle outliers are listed below:

Mol	Chain	Res	Type	Atoms	Z	Observed(°)	Ideal(°)
2	B	428	ASP	OXT-C-O	-6.40	109.56	124.09
2	B	428	ASP	OXT-C-CA	3.09	123.91	113.38
2	B	428	ASP	OD2-CG-OD1	-2.96	115.93	123.30
2	A	427	ASP	OXT-C-O	-2.69	117.98	124.09
2	A	427	ASP	OXT-C-CA	2.47	121.79	113.38

There are no chirality outliers.

All (4) torsion outliers are listed below:

Mol	Chain	Res	Type	Atoms
2	A	427	ASP	O-C-CA-N
2	B	428	ASP	O-C-CA-N
2	B	428	ASP	OXT-C-CA-N
2	A	427	ASP	OXT-C-CA-N

There are no ring outliers.

1 monomer is involved in 2 short contacts:

Mol	Chain	Res	Type	Clashes	Symm-Clashes
2	B	428	ASP	2	0

5.7 Other polymers [i](#)

There are no such residues in this entry.

5.8 Polymer linkage issues [i](#)

There are no chain breaks in this entry.

6 Fit of model and data [i](#)

6.1 Protein, DNA and RNA chains [i](#)

In the following table, the column labelled ‘#RSRZ> 2’ contains the number (and percentage) of RSRZ outliers, followed by percent RSRZ outliers for the chain as percentile scores relative to all X-ray entries and entries of similar resolution. The OWAB column contains the minimum, median, 95th percentile and maximum values of the occupancy-weighted average B-factor per residue. The column labelled ‘Q< 0.9’ lists the number of (and percentage) of residues with an average occupancy less than 0.9.

Mol	Chain	Analysed	<RSRZ>	#RSRZ>2	OWAB(Å ²)	Q<0.9
1	A	326/326 (100%)	-0.62	5 (1%) 73 81	10, 15, 29, 40	0
1	B	326/326 (100%)	-0.71	3 (0%) 84 89	10, 15, 29, 40	0
All	All	652/652 (100%)	-0.66	8 (1%) 79 84	10, 15, 30, 40	0

All (8) RSRZ outliers are listed below:

Mol	Chain	Res	Type	RSRZ
1	A	18	ASP	3.5
1	B	18	ASP	2.7
1	A	106	ASP	2.7
1	A	317	GLN	2.6
1	A	22	LYS	2.3
1	B	106	ASP	2.0
1	B	43	LYS	2.0
1	A	20	ALA	2.0

6.2 Non-standard residues in protein, DNA, RNA chains [i](#)

There are no non-standard protein/DNA/RNA residues in this entry.

6.3 Carbohydrates [i](#)

There are no monosaccharides in this entry.

6.4 Ligands [i](#)

In the following table, the Atoms column lists the number of modelled atoms in the group and the number defined in the chemical component dictionary. The B-factors column lists the minimum,

median, 95th percentile and maximum values of B factors of atoms in the group. The column labelled 'Q< 0.9' lists the number of atoms with occupancy less than 0.9.

Mol	Type	Chain	Res	Atoms	RSCC	RSR	B-factors(Å ²)	Q<0.9
2	ASP	A	427	9/9	0.98	0.05	24,25,28,30	0
2	ASP	B	428	9/9	0.99	0.06	18,20,22,24	0

6.5 Other polymers [i](#)

There are no such residues in this entry.