



Full wwPDB X-ray Structure Validation Report ⓘ

Aug 30, 2023 – 03:40 AM EDT

PDB ID : 3NLQ
Title : Structure of neuronal nitric oxide synthase D597N/M336V mutant heme domain in complex with 6-{{(3'R,4'R)-3'-[2''-(3'''-fluorophenethylamino)ethoxy]pyrrolidin-4'-yl}methyl}-4-methylpyridin-2-amine
Authors : Li, H.; Delker, S.L.; Poulos, T.L.
Deposited on : 2010-06-21
Resolution : 2.15 Å(reported)

This is a Full wwPDB X-ray Structure Validation Report for a publicly released PDB entry.

We welcome your comments at validation@mail.wwpdb.org

A user guide is available at

<https://www.wwpdb.org/validation/2017/XrayValidationReportHelp>

with specific help available everywhere you see the ⓘ symbol.

The types of validation reports are described at

<http://www.wwpdb.org/validation/2017/FAQs#types>.

The following versions of software and data (see [references ⓘ](#)) were used in the production of this report:

MolProbity : 4.02b-467
Mogul : 1.8.5 (274361), CSD as541be (2020)
Xtrriage (Phenix) : 1.13
EDS : 2.35
buster-report : 1.1.7 (2018)
Percentile statistics : 20191225.v01 (using entries in the PDB archive December 25th 2019)
Refmac : 5.8.0158
CCP4 : 7.0.044 (Gargrove)
Ideal geometry (proteins) : Engh & Huber (2001)
Ideal geometry (DNA, RNA) : Parkinson et al. (1996)
Validation Pipeline (wwPDB-VP) : 2.35

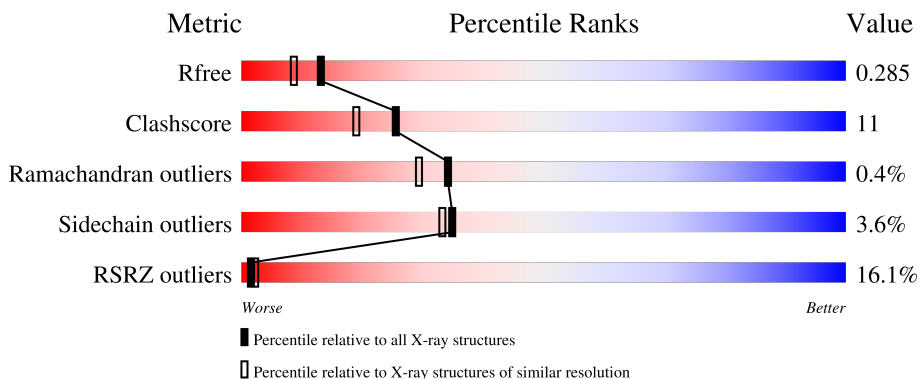
1 Overall quality at a glance

The following experimental techniques were used to determine the structure:

X-RAY DIFFRACTION

The reported resolution of this entry is 2.15 Å.

Percentile scores (ranging between 0-100) for global validation metrics of the entry are shown in the following graphic. The table shows the number of entries on which the scores are based.



Metric	Whole archive (#Entries)	Similar resolution (#Entries, resolution range(Å))
R_{free}	130704	1479 (2.16-2.16)
Clashscore	141614	1585 (2.16-2.16)
Ramachandran outliers	138981	1560 (2.16-2.16)
Sidechain outliers	138945	1559 (2.16-2.16)
RSRZ outliers	127900	1456 (2.16-2.16)

The table below summarises the geometric issues observed across the polymeric chains and their fit to the electron density. The red, orange, yellow and green segments of the lower bar indicate the fraction of residues that contain outliers for ≥ 3 , 2, 1 and 0 types of geometric quality criteria respectively. A grey segment represents the fraction of residues that are not modelled. The numeric value for each fraction is indicated below the corresponding segment, with a dot representing fractions $\leq 5\%$. The upper red bar (where present) indicates the fraction of residues that have poor fit to the electron density. The numeric value is given above the bar.

Mol	Chain	Length	Quality of chain
1	A	422	
1	B	422	

2 Entry composition [i](#)

There are 8 unique types of molecules in this entry. The entry contains 7063 atoms, of which 0 are hydrogens and 0 are deuteriums.

In the tables below, the ZeroOcc column contains the number of atoms modelled with zero occupancy, the AltConf column contains the number of residues with at least one atom in alternate conformation and the Trace column contains the number of residues modelled with at most 2 atoms.

- Molecule 1 is a protein called Nitric oxide synthase, brain.

Mol	Chain	Residues	Atoms					ZeroOcc	AltConf	Trace
			Total	C	N	O	S			
1	A	407	Total 3312	C 2121	N 567	O 604	S 20	0	0	0
1	B	411	Total 3350	C 2144	N 575	O 611	S 20	0	1	0

There are 4 discrepancies between the modelled and reference sequences:

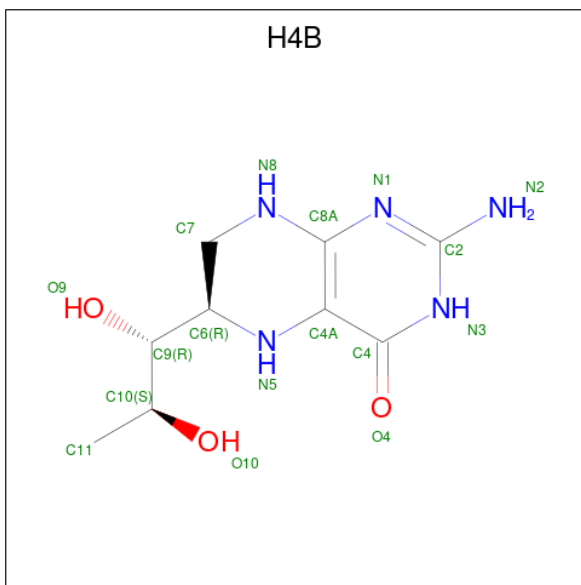
Chain	Residue	Modelled	Actual	Comment	Reference
A	336	VAL	MET	engineered mutation	UNP P29476
A	597	ASN	ASP	engineered mutation	UNP P29476
B	336	VAL	MET	engineered mutation	UNP P29476
B	597	ASN	ASP	engineered mutation	UNP P29476

- Molecule 2 is PROTOPORPHYRIN IX CONTAINING FE (three-letter code: HEM) (formula: $C_{34}H_{32}FeN_4O_4$).



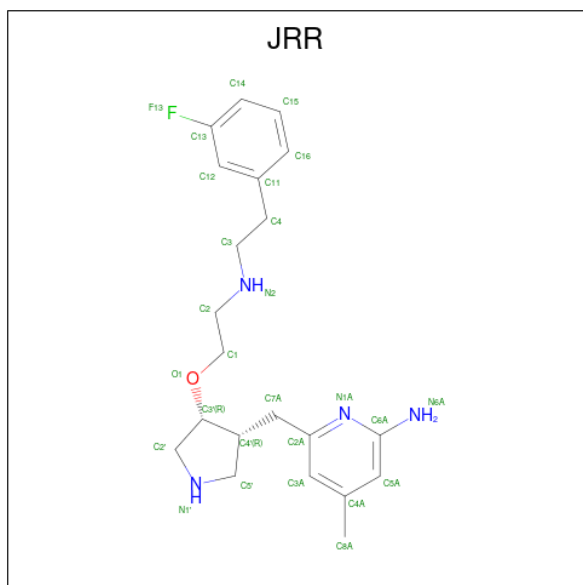
Mol	Chain	Residues	Atoms				ZeroOcc	AltConf	
2	A	1	Total	C	Fe	N	O	0	0
			43	34	1	4	4		
2	B	1	Total	C	Fe	N	O	0	0
			43	34	1	4	4		

- Molecule 3 is 5,6,7,8-TETRAHYDROBIOPTERIN (three-letter code: H4B) (formula: $C_9H_{15}N_5O_3$).



Mol	Chain	Residues	Atoms				ZeroOcc	AltConf
3	A	1	Total	C	N	O	0	0
			17	9	5	3		
3	B	1	Total	C	N	O	0	0
			17	9	5	3		

- Molecule 4 is 6-{[(3R,4R)-4-(2-{[2-(3-fluorophenyl)ethyl]amino}ethoxy)pyrrolidin-3-yl]methyl}-4-methylpyridin-2-amine (three-letter code: JRR) (formula: $C_{21}H_{29}FN_4O$).



Mol	Chain	Residues	Atoms				ZeroOcc	AltConf	
4	A	1	Total	C	F	N	O	0	0
			27	21	1	4	1		
4	B	1	Total	C	F	N	O	0	0
			27	21	1	4	1		

- Molecule 5 is ACETATE ION (three-letter code: ACT) (formula: $C_2H_3O_2$).



Mol	Chain	Residues	Atoms		ZeroOcc	AltConf	
5	A	1	Total	C	O	0	0
			4	2	2		
5	B	1	Total	C	O	0	0
			4	2	2		

- Molecule 6 is 1,2-ETHANEDIOL (three-letter code: EDO) (formula: $C_2H_6O_2$).



Mol	Chain	Residues	Atoms	ZeroOcc	AltConf
6	A	1	Total C O 4 2 2	0	0

- Molecule 7 is ZINC ION (three-letter code: ZN) (formula: Zn).

Mol	Chain	Residues	Atoms	ZeroOcc	AltConf
7	A	1	Total Zn 1 1	0	0

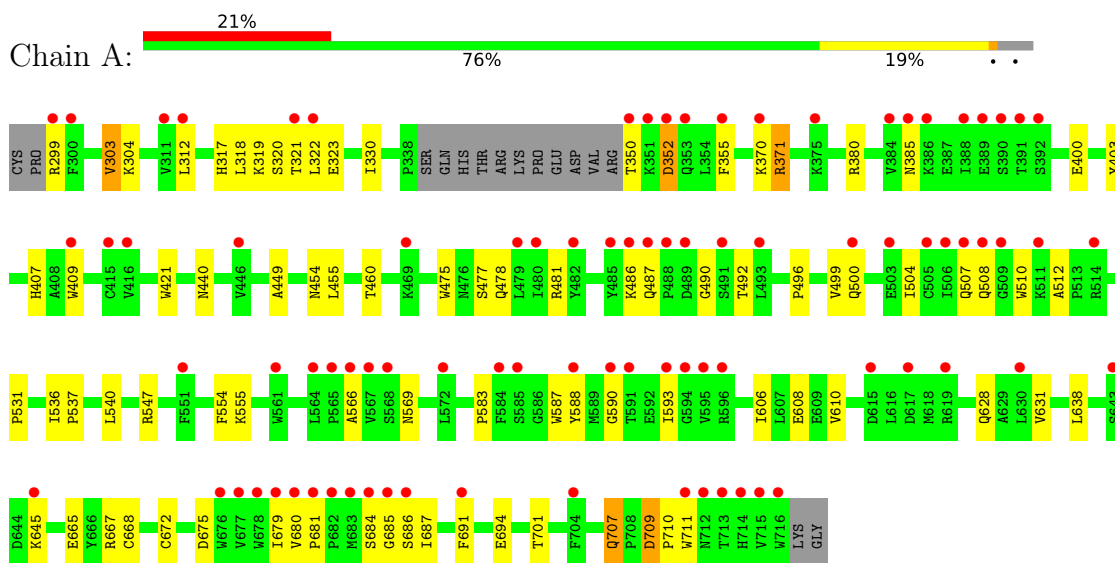
- Molecule 8 is water.

Mol	Chain	Residues	Atoms	ZeroOcc	AltConf
8	A	91	Total O 91 91	0	0
8	B	123	Total O 123 123	0	0

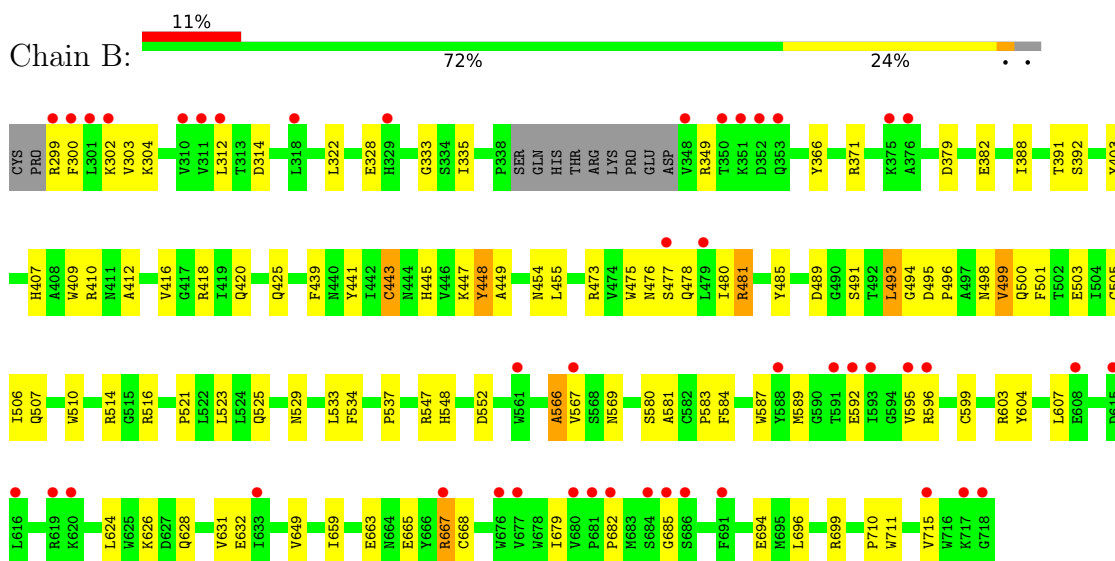
3 Residue-property plots [i](#)

These plots are drawn for all protein, RNA, DNA and oligosaccharide chains in the entry. The first graphic for a chain summarises the proportions of the various outlier classes displayed in the second graphic. The second graphic shows the sequence view annotated by issues in geometry and electron density. Residues are color-coded according to the number of geometric quality criteria for which they contain at least one outlier: green = 0, yellow = 1, orange = 2 and red = 3 or more. A red dot above a residue indicates a poor fit to the electron density ($RSRZ > 2$). Stretches of 2 or more consecutive residues without any outlier are shown as a green connector. Residues present in the sample, but not in the model, are shown in grey.

- Molecule 1: Nitric oxide synthase, brain



- Molecule 1: Nitric oxide synthase, brain



4 Data and refinement statistics

Property	Value	Source
Space group	P 21 21 21	Depositor
Cell constants a, b, c, α , β , γ	51.59Å 111.23Å 163.97Å 90.00° 90.00° 90.00°	Depositor
Resolution (Å)	37.82 – 2.15 37.82 – 2.15	Depositor EDS
% Data completeness (in resolution range)	99.2 (37.82-2.15) 99.2 (37.82-2.15)	Depositor EDS
R_{merge}	0.05	Depositor
R_{sym}	0.05	Depositor
$\langle I/\sigma(I) \rangle$ ¹	1.06 (at 2.14Å)	Xtrriage
Refinement program	REFMAC 5.5.0102, CNS	Depositor
R, R_{free}	0.204 , 0.259 0.246 , 0.285	Depositor DCC
R_{free} test set	2601 reflections (5.00%)	wwPDB-VP
Wilson B-factor (Å ²)	42.6	Xtrriage
Anisotropy	0.433	Xtrriage
Bulk solvent k_{sol} (e/Å ³), B_{sol} (Å ²)	0.33 , 49.8	EDS
L-test for twinning ²	$\langle L \rangle = 0.49$, $\langle L^2 \rangle = 0.32$	Xtrriage
Estimated twinning fraction	No twinning to report.	Xtrriage
F_o, F_c correlation	0.95	EDS
Total number of atoms	7063	wwPDB-VP
Average B, all atoms (Å ²)	61.0	wwPDB-VP

Xtrriage's analysis on translational NCS is as follows: *The largest off-origin peak in the Patterson function is 5.54% of the height of the origin peak. No significant pseudotranslation is detected.*

¹Intensities estimated from amplitudes.

²Theoretical values of $\langle |L| \rangle$, $\langle L^2 \rangle$ for acentric reflections are 0.5, 0.333 respectively for untwinned datasets, and 0.375, 0.2 for perfectly twinned datasets.

5 Model quality [i](#)

5.1 Standard geometry [i](#)

Bond lengths and bond angles in the following residue types are not validated in this section: H4B, HEM, ACT, EDO, JRR, ZN

The Z score for a bond length (or angle) is the number of standard deviations the observed value is removed from the expected value. A bond length (or angle) with $|Z| > 5$ is considered an outlier worth inspection. RMSZ is the root-mean-square of all Z scores of the bond lengths (or angles).

Mol	Chain	Bond lengths		Bond angles	
		RMSZ	# Z >5	RMSZ	# Z >5
1	A	0.71	0/3405	0.75	0/4621
1	B	0.99	8/3446 (0.2%)	0.90	4/4673 (0.1%)
All	All	0.86	8/6851 (0.1%)	0.83	4/9294 (0.0%)

All (8) bond length outliers are listed below:

Mol	Chain	Res	Type	Atoms	Z	Observed(Å)	Ideal(Å)
1	B	566	ALA	C-O	6.59	1.35	1.23
1	B	499	VAL	CB-CG1	6.50	1.66	1.52
1	B	665	GLU	CD-OE2	6.28	1.32	1.25
1	B	441	TYR	CD1-CE1	-6.21	1.30	1.39
1	B	448	TYR	CD1-CE1	6.06	1.48	1.39
1	B	668	CYS	CB-SG	5.60	1.91	1.82
1	B	581	ALA	CA-CB	-5.42	1.41	1.52
1	B	443	CYS	CB-SG	5.07	1.90	1.82

All (4) bond angle outliers are listed below:

Mol	Chain	Res	Type	Atoms	Z	Observed(°)	Ideal(°)
1	B	410	ARG	NE-CZ-NH1	-7.14	116.73	120.30
1	B	596	ARG	NE-CZ-NH2	-6.03	117.28	120.30
1	B	379	ASP	CB-CG-OD2	-5.96	112.94	118.30
1	B	379	ASP	CB-CG-OD1	5.48	123.23	118.30

There are no chirality outliers.

There are no planarity outliers.

5.2 Too-close contacts [i](#)

In the following table, the Non-H and H(model) columns list the number of non-hydrogen atoms and hydrogen atoms in the chain respectively. The H(added) column lists the number of hydrogen atoms added and optimized by MolProbity. The Clashes column lists the number of clashes within the asymmetric unit, whereas Symm-Clashes lists symmetry-related clashes.

Mol	Chain	Non-H	H(model)	H(added)	Clashes	Symm-Clashes
1	A	3312	0	3223	59	0
1	B	3350	0	3267	80	0
2	A	43	0	30	5	0
2	B	43	0	30	10	0
3	A	17	0	15	0	0
3	B	17	0	15	0	0
4	A	27	0	29	3	0
4	B	27	0	29	3	0
5	A	4	0	3	0	0
5	B	4	0	3	0	0
6	A	4	0	6	0	0
7	A	1	0	0	0	0
8	A	91	0	0	2	0
8	B	123	0	0	3	0
All	All	7063	0	6650	143	0

The all-atom clashscore is defined as the number of clashes found per 1000 atoms (including hydrogen atoms). The all-atom clashscore for this structure is 11.

All (143) close contacts within the same asymmetric unit are listed below, sorted by their clash magnitude.

Atom-1	Atom-2	Interatomic distance (Å)	Clash overlap (Å)
1:B:500:GLN:HA	1:B:503:GLU:OE2	1.58	1.01
1:B:514:ARG:HH11	1:B:514:ARG:HG2	1.26	0.99
2:B:750:HEM:HMC2	2:B:750:HEM:HBC2	1.50	0.92
1:A:299:ARG:O	1:A:317:HIS:CE1	2.24	0.90
1:B:480:ILE:HA	8:B:1035:HOH:O	1.73	0.88
1:B:439:PHE:CE2	1:B:443:CYS:SG	2.74	0.80
1:B:514:ARG:HG2	1:B:514:ARG:NH1	1.96	0.76
1:A:299:ARG:O	1:A:317:HIS:HE1	1.67	0.76
1:B:481:ARG:HD3	1:B:498:ASN:HD21	1.51	0.76
1:B:659:ILE:O	1:B:663:GLU:HG3	1.88	0.74
1:B:481:ARG:HD3	1:B:498:ASN:ND2	2.05	0.72
1:A:371:ARG:CG	1:A:371:ARG:HH21	2.04	0.71
1:B:663:GLU:O	1:B:667:ARG:HD2	1.90	0.70

Continued on next page...

Continued from previous page...

Atom-1	Atom-2	Interatomic distance (Å)	Clash overlap (Å)
1:A:486:LYS:HE2	1:A:499:VAL:HG11	1.73	0.69
1:B:475:TRP:HB2	1:B:523:LEU:HB3	1.75	0.69
1:B:409:TRP:CH2	2:B:750:HEM:HMC1	2.28	0.68
1:B:533:LEU:O	1:B:534:PHE:CG	2.46	0.68
1:B:525:GLN:HG3	1:B:529:ASN:O	1.94	0.68
1:B:587:TRP:H	2:B:750:HEM:HAB	1.59	0.68
1:B:501:PHE:CE2	1:B:505:CYS:SG	2.87	0.68
1:B:322:LEU:HD13	1:B:699:ARG:HH21	1.60	0.66
1:A:554:PHE:HB3	8:A:1087:HOH:O	1.96	0.65
2:B:750:HEM:HBA2	4:B:800:JRR:H4	1.78	0.64
1:A:686:SER:OG	1:B:682:PRO:HB2	1.98	0.63
1:B:493:LEU:HD12	1:B:494:GLY:N	2.14	0.63
1:B:592[A]:GLU:OE1	4:B:800:JRR:H16	1.99	0.62
1:B:485:TYR:CZ	1:B:514:ARG:HA	2.35	0.62
1:A:299:ARG:HG3	1:A:318:LEU:HD11	1.82	0.61
1:B:485:TYR:CE1	1:B:514:ARG:HA	2.35	0.61
1:A:317:HIS:O	1:A:320:SER:HB3	2.01	0.60
1:A:496:PRO:HA	1:A:499:VAL:HG23	1.84	0.59
1:A:569:ASN:O	1:A:707:GLN:HG3	2.02	0.59
2:B:750:HEM:HBA1	2:B:750:HEM:HMA2	1.85	0.59
1:A:492:THR:HG21	1:A:496:PRO:HB3	1.85	0.59
1:A:667:ARG:NH1	1:A:668:CYS:SG	2.76	0.59
1:B:499:VAL:O	1:B:503:GLU:HG3	2.03	0.58
1:B:473:ARG:HD3	1:B:580:SER:HB2	1.86	0.58
1:A:684:SER:HB3	1:A:687:ILE:HG12	1.86	0.57
1:B:595:VAL:O	1:B:599:CYS:HB2	2.04	0.57
1:A:321:THR:HG23	1:A:322:LEU:HG	1.86	0.57
1:A:304:LYS:O	1:A:694:GLU:HG3	2.05	0.57
1:B:510:TRP:CD1	1:B:521:PRO:HG3	2.40	0.57
1:A:323:GLU:HG2	1:B:328:GLU:HB3	1.86	0.56
1:A:537:PRO:HB2	1:A:540:LEU:HG	1.87	0.56
1:A:371:ARG:CG	1:A:371:ARG:NH2	2.68	0.56
1:A:500:GLN:O	1:A:504:ILE:HG13	2.07	0.55
1:A:478:GLN:HB2	1:A:481:ARG:HG3	1.89	0.55
1:A:628:GLN:HG2	1:B:631:VAL:HG11	1.89	0.55
1:B:388:ILE:O	1:B:392:SER:N	2.40	0.55
1:B:445:HIS:C	1:B:445:HIS:CD2	2.81	0.54
1:A:478:GLN:HA	1:A:566:ALA:O	2.07	0.54
1:B:425:GLN:HG2	1:B:448:TYR:CZ	2.42	0.54
1:B:304:LYS:O	1:B:694:GLU:HG3	2.07	0.54
1:A:355:PHE:CE1	1:A:385:ASN:HB2	2.42	0.53

Continued on next page...

Continued from previous page...

Atom-1	Atom-2	Interatomic distance (Å)	Clash overlap (Å)
1:A:507:GLN:O	1:A:507:GLN:HG2	2.08	0.53
1:A:299:ARG:HG3	1:A:318:LEU:CD1	2.39	0.53
1:B:409:TRP:CE2	2:B:750:HEM:C2C	2.97	0.53
1:B:607:LEU:HD13	1:B:626:LYS:HG2	1.90	0.53
2:A:750:HEM:HBA2	4:A:800:JRR:H4	1.90	0.53
1:B:514:ARG:NH1	1:B:514:ARG:CG	2.70	0.52
1:A:317:HIS:O	1:A:320:SER:CB	2.58	0.52
1:B:439:PHE:CZ	1:B:443:CYS:SG	3.03	0.51
1:A:371:ARG:NH2	1:A:371:ARG:HG2	2.26	0.51
1:A:380:ARG:HD3	1:A:400:GLU:OE1	2.10	0.51
1:B:514:ARG:HH11	1:B:514:ARG:CG	2.08	0.50
1:A:631:VAL:HG11	1:B:628:GLN:HG2	1.93	0.50
1:B:476:ASN:ND2	1:B:501:PHE:CZ	2.80	0.50
1:B:567:VAL:HB	1:B:584:PHE:CE1	2.47	0.49
1:A:330:ILE:HD11	1:B:696:LEU:HB3	1.94	0.49
1:A:487:GLN:O	1:A:490:GLY:N	2.45	0.49
1:A:371:ARG:HH21	1:A:371:ARG:HG2	1.78	0.49
1:A:675:ASP:O	1:A:679:ILE:HG12	2.12	0.49
2:A:750:HEM:HBC2	2:A:750:HEM:CMC	2.43	0.49
1:B:481:ARG:NH1	1:B:498:ASN:OD1	2.45	0.49
1:B:567:VAL:HB	1:B:584:PHE:CZ	2.48	0.49
2:A:750:HEM:O2D	4:A:800:JRR:N1A	2.46	0.49
1:B:478:GLN:HA	1:B:566:ALA:O	2.12	0.48
1:B:489:ASP:OD2	1:B:491:SER:OG	2.29	0.48
1:B:624:LEU:O	1:B:628:GLN:HG3	2.13	0.48
1:B:366:TYR:HD2	1:B:371:ARG:HB2	1.77	0.48
1:A:371:ARG:HH21	1:A:371:ARG:HG3	1.76	0.48
1:A:665:GLU:CB	1:A:672:CYS:HB2	2.43	0.48
2:B:750:HEM:HMC2	2:B:750:HEM:CBC	2.33	0.48
1:B:505:CYS:O	1:B:506:ILE:C	2.53	0.47
1:B:481:ARG:CD	1:B:498:ASN:HD21	2.23	0.46
1:A:409:TRP:CE3	1:A:421:TRP:HA	2.50	0.46
1:B:533:LEU:C	1:B:534:PHE:CG	2.88	0.46
1:B:548:HIS:NE2	1:B:632:GLU:OE1	2.48	0.46
1:B:495:ASP:HB2	1:B:604:TYR:CE1	2.50	0.46
1:A:299:ARG:O	1:A:317:HIS:NE2	2.49	0.45
1:B:478:GLN:HB2	1:B:481:ARG:HG3	1.99	0.45
1:A:536:ILE:O	1:A:537:PRO:C	2.54	0.45
2:A:750:HEM:O2A	4:A:800:JRR:H2'A	2.16	0.45
1:B:299:ARG:CZ	1:B:299:ARG:HB3	2.47	0.45
1:B:566:ALA:HA	1:B:584:PHE:O	2.16	0.45

Continued on next page...

Continued from previous page...

Atom-1	Atom-2	Interatomic distance (Å)	Clash overlap (Å)
1:A:460:THR:O	1:A:583:PRO:HD2	2.17	0.45
1:B:302:LYS:HA	1:B:312:LEU:O	2.17	0.45
1:A:475:TRP:CZ2	1:A:531:PRO:HG3	2.51	0.45
1:A:352:ASP:OD2	1:A:352:ASP:N	2.48	0.45
1:B:496:PRO:HD2	1:B:603:ARG:HA	1.98	0.45
1:B:477:SER:HA	1:B:569:ASN:HB3	1.99	0.44
2:A:750:HEM:HBB2	2:A:750:HEM:HHC	1.99	0.44
1:A:370:LYS:HB2	1:A:370:LYS:HE3	1.85	0.44
1:A:606:ILE:O	1:A:610:VAL:HG23	2.18	0.44
1:B:439:PHE:HZ	1:B:537:PRO:HD3	1.82	0.44
1:A:303:VAL:HG23	1:A:312:LEU:HB2	1.99	0.43
1:A:449:ALA:O	1:A:455:LEU:HA	2.18	0.43
1:B:425:GLN:HG2	1:B:448:TYR:CE2	2.53	0.43
1:A:709:ASP:HB3	1:A:711:TRP:CE2	2.54	0.43
1:B:416:VAL:HB	8:B:1001:HOH:O	2.19	0.43
1:B:455:LEU:HD12	1:B:455:LEU:N	2.33	0.43
2:B:750:HEM:O2D	4:B:800:JRR:N1A	2.51	0.43
1:B:403:TYR:CE1	1:B:407:HIS:CE1	3.07	0.42
1:B:409:TRP:CZ2	2:B:750:HEM:HMC1	2.53	0.42
1:A:321:THR:HG23	1:A:322:LEU:N	2.34	0.42
1:B:416:VAL:HG23	1:B:679:ILE:HG23	2.00	0.42
1:A:680:VAL:HA	1:A:681:PRO:HD3	1.92	0.42
1:B:589:MET:HA	1:B:649:VAL:O	2.18	0.42
1:A:440:ASN:ND2	8:A:1057:HOH:O	2.43	0.42
1:B:510:TRP:CE2	1:B:521:PRO:HD3	2.55	0.42
1:A:510:TRP:CE3	1:A:512:ALA:HB2	2.54	0.42
1:A:455:LEU:HD12	1:A:587:TRP:HB3	2.02	0.42
1:B:391:THR:O	1:B:392:SER:HB2	2.19	0.42
1:B:409:TRP:CH2	2:B:750:HEM:CMC	3.00	0.41
1:B:388:ILE:O	1:B:392:SER:HA	2.21	0.41
1:A:590:GLY:HA3	1:A:638:LEU:HD21	2.01	0.41
1:B:449:ALA:O	1:B:455:LEU:HA	2.20	0.41
1:A:685:GLY:O	1:A:691:PHE:HB2	2.20	0.41
1:A:709:ASP:HA	1:A:710:PRO:HD3	1.96	0.41
1:B:418:ARG:C	1:B:420:GLN:N	2.74	0.41
1:B:505:CYS:O	1:B:507:GLN:N	2.54	0.41
1:A:588:TYR:CD1	1:A:593:ILE:HD11	2.56	0.41
1:B:567:VAL:O	1:B:583:PRO:HA	2.21	0.41
1:A:694:GLU:HB3	1:B:335:ILE:HD13	2.02	0.41
1:B:510:TRP:CG	1:B:521:PRO:HG3	2.56	0.41
1:B:412:ALA:O	1:B:418:ARG:CZ	2.69	0.41

Continued on next page...

Continued from previous page...

Atom-1	Atom-2	Interatomic distance (Å)	Clash overlap (Å)
1:B:455:LEU:N	1:B:455:LEU:CD1	2.83	0.40
1:A:492:THR:HG21	1:A:496:PRO:CB	2.50	0.40
1:A:403:TYR:CE1	1:A:407:HIS:CE1	3.09	0.40
1:B:314:ASP:OD1	1:B:314:ASP:C	2.60	0.40
1:B:447:LYS:HG2	8:B:1095:HOH:O	2.22	0.40
1:A:321:THR:HG23	1:A:322:LEU:H	1.85	0.40
1:B:710:PRO:HD2	1:B:711:TRP:CE3	2.57	0.40

There are no symmetry-related clashes.

5.3 Torsion angles [i](#)

5.3.1 Protein backbone [i](#)

In the following table, the Percentiles column shows the percent Ramachandran outliers of the chain as a percentile score with respect to all X-ray entries followed by that with respect to entries of similar resolution.

The Analysed column shows the number of residues for which the backbone conformation was analysed, and the total number of residues.

Mol	Chain	Analysed	Favoured	Allowed	Outliers	Percentiles	
1	A	403/422 (96%)	381 (94%)	21 (5%)	1 (0%)	47	46
1	B	408/422 (97%)	379 (93%)	27 (7%)	2 (0%)	29	22
All	All	811/844 (96%)	760 (94%)	48 (6%)	3 (0%)	34	29

All (3) Ramachandran outliers are listed below:

Mol	Chain	Res	Type
1	B	333	GLY
1	B	685	GLY
1	A	709	ASP

5.3.2 Protein sidechains [i](#)

In the following table, the Percentiles column shows the percent sidechain outliers of the chain as a percentile score with respect to all X-ray entries followed by that with respect to entries of similar resolution.

The Analysed column shows the number of residues for which the sidechain conformation was

analysed, and the total number of residues.

Mol	Chain	Analysed	Rotameric	Outliers	Percentiles	
1	A	363/377 (96%)	349 (96%)	14 (4%)	32	30
1	B	367/377 (97%)	355 (97%)	12 (3%)	38	37
All	All	730/754 (97%)	704 (96%)	26 (4%)	35	33

All (26) residues with a non-rotameric sidechain are listed below:

Mol	Chain	Res	Type
1	A	303	VAL
1	A	319	LYS
1	A	350	THR
1	A	352	ASP
1	A	371	ARG
1	A	454	ASN
1	A	477	SER
1	A	508	GLN
1	A	547	ARG
1	A	555	LYS
1	A	608	GLU
1	A	645	LYS
1	A	701	THR
1	A	707	GLN
1	B	300	PHE
1	B	303	VAL
1	B	349	ARG
1	B	382	GLU
1	B	454	ASN
1	B	481	ARG
1	B	493	LEU
1	B	516	ARG
1	B	547	ARG
1	B	552	ASP
1	B	667	ARG
1	B	715	VAL

Sometimes sidechains can be flipped to improve hydrogen bonding and reduce clashes. All (17) such sidechains are listed below:

Mol	Chain	Res	Type
1	A	317	HIS
1	A	353	GLN

Continued on next page...

Continued from previous page...

Mol	Chain	Res	Type
1	A	364	GLN
1	A	440	ASN
1	A	454	ASN
1	A	508	GLN
1	A	605	ASN
1	A	628	GLN
1	A	642	GLN
1	A	697	ASN
1	A	712	ASN
1	B	454	ASN
1	B	527	ASN
1	B	601	ASN
1	B	605	ASN
1	B	642	GLN
1	B	697	ASN

5.3.3 RNA [i](#)

There are no RNA molecules in this entry.

5.4 Non-standard residues in protein, DNA, RNA chains [i](#)

There are no non-standard protein/DNA/RNA residues in this entry.

5.5 Carbohydrates [i](#)

There are no monosaccharides in this entry.

5.6 Ligand geometry [i](#)

Of 10 ligands modelled in this entry, 1 is monoatomic - leaving 9 for Mogul analysis.

In the following table, the Counts columns list the number of bonds (or angles) for which Mogul statistics could be retrieved, the number of bonds (or angles) that are observed in the model and the number of bonds (or angles) that are defined in the Chemical Component Dictionary. The Link column lists molecule types, if any, to which the group is linked. The Z score for a bond length (or angle) is the number of standard deviations the observed value is removed from the expected value. A bond length (or angle) with $|Z| > 2$ is considered an outlier worth inspection. RMSZ is the root-mean-square of all Z scores of the bond lengths (or angles).

Mol	Type	Chain	Res	Link	Bond lengths			Bond angles		
					Counts	RMSZ	# Z > 2	Counts	RMSZ	# Z > 2
2	HEM	A	750	1	41,50,50	1.95	7 (17%)	45,82,82	2.04	11 (24%)
2	HEM	B	750	1	41,50,50	1.91	7 (17%)	45,82,82	1.75	9 (20%)
3	H4B	B	760	-	16,18,18	1.38	3 (18%)	11,26,26	2.74	6 (54%)
4	JRR	B	800	-	28,29,29	0.85	0	31,38,38	2.18	11 (35%)
6	EDO	A	890	-	3,3,3	0.64	0	2,2,2	0.43	0
5	ACT	B	860	-	3,3,3	0.85	0	3,3,3	0.28	0
3	H4B	A	760	-	16,18,18	1.16	2 (12%)	11,26,26	3.20	7 (63%)
4	JRR	A	800	-	28,29,29	1.05	1 (3%)	31,38,38	1.85	9 (29%)
5	ACT	A	860	-	3,3,3	0.69	0	3,3,3	0.93	0

In the following table, the Chirals column lists the number of chiral outliers, the number of chiral centers analysed, the number of these observed in the model and the number defined in the Chemical Component Dictionary. Similar counts are reported in the Torsion and Rings columns. '-' means no outliers of that kind were identified.

Mol	Type	Chain	Res	Link	Chirals	Torsions	Rings
2	HEM	A	750	1	-	2/12/54/54	-
2	HEM	B	750	1	-	5/12/54/54	-
3	H4B	B	760	-	-	1/8/17/17	0/2/2/2
4	JRR	B	800	-	-	1/13/23/23	0/3/3/3
6	EDO	A	890	-	-	0/1/1/1	-
3	H4B	A	760	-	-	0/8/17/17	0/2/2/2
4	JRR	A	800	-	-	5/13/23/23	0/3/3/3

All (20) bond length outliers are listed below:

Mol	Chain	Res	Type	Atoms	Z	Observed(Å)	Ideal(Å)
2	B	750	HEM	C3D-C2D	7.67	1.53	1.36
2	A	750	HEM	C3D-C2D	7.39	1.52	1.36
2	B	750	HEM	C3C-C2C	-4.17	1.34	1.40
2	A	750	HEM	C3C-C2C	-4.11	1.34	1.40
2	B	750	HEM	C3C-CAC	3.32	1.54	1.47
2	A	750	HEM	CAB-C3B	3.27	1.56	1.47
3	B	760	H4B	C7-N8	2.99	1.49	1.44
2	A	750	HEM	CAA-C2A	2.96	1.56	1.52
2	B	750	HEM	CMB-C2B	2.83	1.56	1.50
4	A	800	JRR	C2A-N1A	2.79	1.39	1.34
3	A	760	H4B	C2-N2	2.78	1.39	1.33
2	A	750	HEM	C3C-CAC	2.68	1.53	1.47
2	B	750	HEM	CAB-C3B	2.65	1.54	1.47

Continued on next page...

Continued from previous page...

Mol	Chain	Res	Type	Atoms	Z	Observed(Å)	Ideal(Å)
3	A	760	H4B	C7-N8	2.63	1.49	1.44
2	A	750	HEM	CMC-C2C	2.61	1.57	1.51
2	B	750	HEM	CMC-C2C	2.27	1.57	1.51
3	B	760	H4B	O4-C4	2.25	1.30	1.24
2	A	750	HEM	CMA-C3A	2.13	1.56	1.51
3	B	760	H4B	C7-C6	2.11	1.54	1.52
2	B	750	HEM	CMA-C3A	2.05	1.55	1.51

All (53) bond angle outliers are listed below:

Mol	Chain	Res	Type	Atoms	Z	Observed(°)	Ideal(°)
2	A	750	HEM	CBA-CAA-C2A	-7.04	100.60	112.62
4	B	800	JRR	C6A-N1A-C2A	6.85	123.29	118.10
3	A	760	H4B	C4-C4A-N5	5.68	123.89	119.12
3	B	760	H4B	C8A-C4A-C4	5.57	119.52	114.57
2	B	750	HEM	CBA-CAA-C2A	-4.87	104.32	112.62
2	B	750	HEM	C4D-ND-C1D	4.75	109.98	105.07
2	A	750	HEM	C4D-ND-C1D	4.70	109.93	105.07
3	A	760	H4B	N1-C2-N3	-4.62	118.17	125.42
2	B	750	HEM	C4B-CHC-C1C	4.36	128.31	122.56
3	A	760	H4B	C2-N3-C4	4.34	122.83	115.93
2	A	750	HEM	C2C-C3C-C4C	4.27	109.88	106.90
4	A	800	JRR	N6A-C6A-N1A	4.22	123.16	116.49
4	B	800	JRR	C4A-C3A-C2A	-4.17	117.59	120.32
4	B	800	JRR	C11-C12-C13	4.17	122.60	118.81
2	A	750	HEM	C4C-CHD-C1D	4.08	127.94	122.56
4	A	800	JRR	C6A-N1A-C2A	3.85	121.02	118.10
3	A	760	H4B	C2-N1-C8A	3.82	123.11	114.54
4	A	800	JRR	C3-C4-C11	-3.49	104.78	112.87
4	B	800	JRR	C14-C13-C12	-3.30	119.00	123.29
3	B	760	H4B	C2-N3-C4	3.29	121.16	115.93
2	A	750	HEM	C3B-C2B-C1B	3.28	108.92	106.49
3	B	760	H4B	N1-C2-N3	-3.12	120.53	125.42
2	A	750	HEM	CBD-CAD-C3D	-3.03	104.19	112.63
3	A	760	H4B	C8A-C4A-C4	2.88	117.13	114.57
4	A	800	JRR	C5'-N1'-C2'	2.88	112.22	105.42
4	A	800	JRR	C3A-C2A-N1A	-2.86	119.87	122.90
3	B	760	H4B	C4-C4A-N5	2.83	121.49	119.12
2	B	750	HEM	C4B-C3B-C2B	2.80	109.34	107.11
4	A	800	JRR	F13-C13-C14	2.77	123.25	118.54
2	B	750	HEM	CAA-CBA-CGA	-2.68	106.25	113.76
3	B	760	H4B	C2-N1-C8A	2.63	120.44	114.54

Continued on next page...

Continued from previous page...

Mol	Chain	Res	Type	Atoms	Z	Observed(°)	Ideal(°)
4	B	800	JRR	C5A-C4A-C3A	2.53	121.11	118.09
3	B	760	H4B	N2-C2-N3	2.49	121.12	117.25
3	A	760	H4B	N2-C2-N1	2.47	121.10	117.25
4	B	800	JRR	C3-C4-C11	-2.46	107.16	112.87
4	B	800	JRR	C5'-N1'-C2'	2.39	111.07	105.42
2	B	750	HEM	CHA-C4D-ND	2.35	127.28	124.38
2	B	750	HEM	CMA-C3A-C4A	-2.32	124.89	128.46
2	B	750	HEM	CBD-CAD-C3D	-2.28	106.28	112.63
4	A	800	JRR	C4-C11-C12	-2.26	116.83	120.54
2	B	750	HEM	CHC-C4B-NB	2.25	126.88	124.43
3	A	760	H4B	N2-C2-N3	2.23	120.73	117.25
4	A	800	JRR	C16-C15-C14	-2.22	117.09	120.25
4	B	800	JRR	C3A-C2A-N1A	-2.21	120.56	122.90
4	A	800	JRR	F13-C13-C12	-2.21	115.10	118.25
4	B	800	JRR	C8A-C4A-C3A	-2.17	117.73	120.94
2	A	750	HEM	C1B-NB-C4B	2.11	107.26	105.07
2	A	750	HEM	C3C-C4C-NC	-2.11	106.97	110.94
2	A	750	HEM	O1A-CGA-CBA	-2.10	116.32	123.08
4	B	800	JRR	C1-O1-C3'	2.10	118.75	113.87
2	A	750	HEM	C4D-C3D-C2D	-2.07	103.89	106.90
2	A	750	HEM	CHA-C4D-ND	2.06	126.93	124.38
4	B	800	JRR	F13-C13-C14	2.02	121.98	118.54

There are no chirality outliers.

All (14) torsion outliers are listed below:

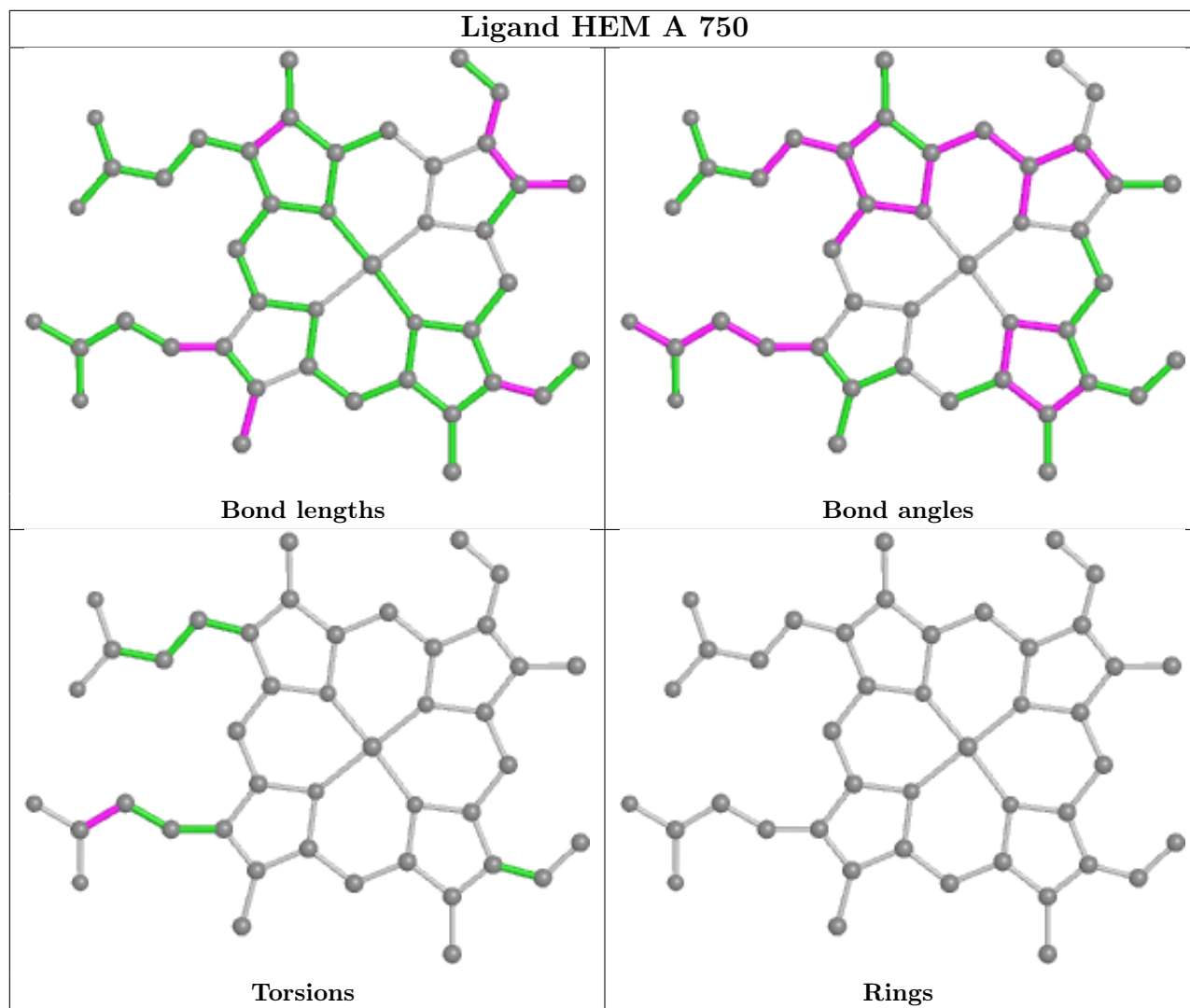
Mol	Chain	Res	Type	Atoms
2	B	750	HEM	C2B-C3B-CAB-CBB
2	B	750	HEM	C4B-C3B-CAB-CBB
4	A	800	JRR	N1A-C2A-C7A-C4'
4	A	800	JRR	C5'-C4'-C7A-C2A
4	A	800	JRR	C4-C3-N2-C2
4	B	800	JRR	C1-C2-N2-C3
3	B	760	H4B	C7-C6-C9-O9
4	A	800	JRR	C2-C1-O1-C3'
2	B	750	HEM	C3A-C2A-CAA-CBA
2	B	750	HEM	CAA-CBA-CGA-O2A
2	B	750	HEM	CAA-CBA-CGA-O1A
2	A	750	HEM	CAA-CBA-CGA-O2A
4	A	800	JRR	C1-C2-N2-C3
2	A	750	HEM	CAA-CBA-CGA-O1A

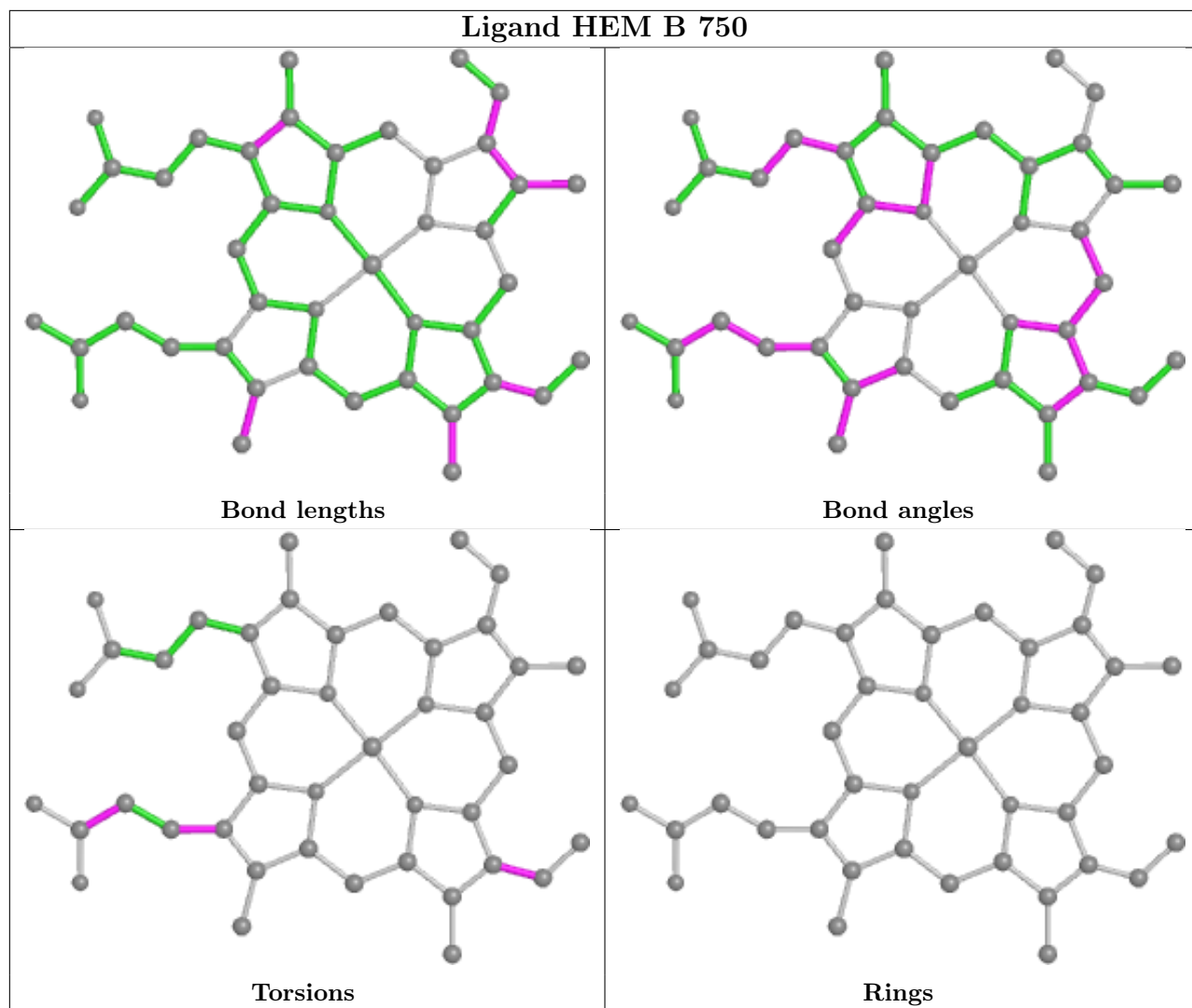
There are no ring outliers.

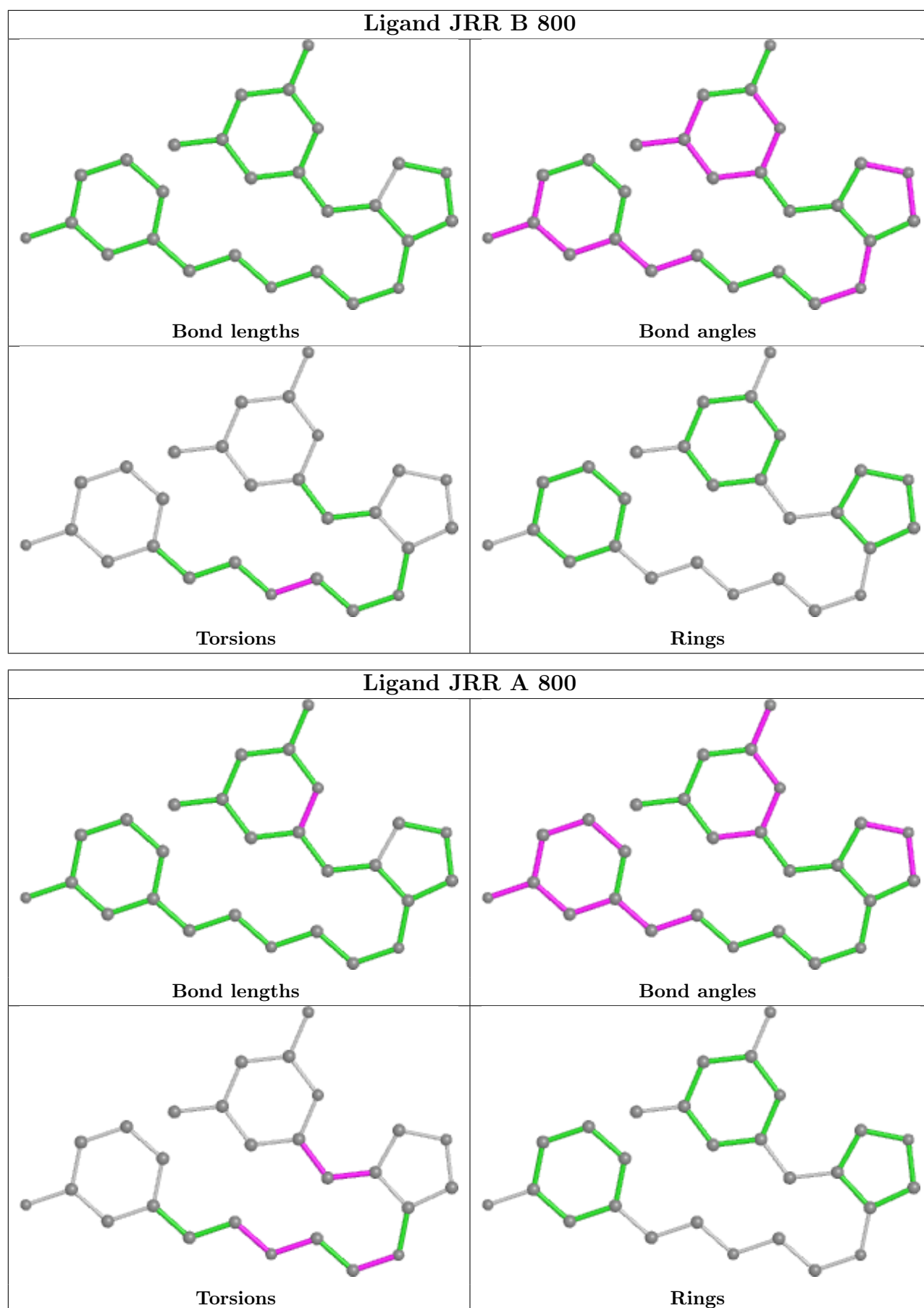
4 monomers are involved in 16 short contacts:

Mol	Chain	Res	Type	Clashes	Symm-Clashes
2	A	750	HEM	5	0
2	B	750	HEM	10	0
4	B	800	JRR	3	0
4	A	800	JRR	3	0

The following is a two-dimensional graphical depiction of Mogul quality analysis of bond lengths, bond angles, torsion angles, and ring geometry for all instances of the Ligand of Interest. In addition, ligands with molecular weight > 250 and outliers as shown on the validation Tables will also be included. For torsion angles, if less than 5% of the Mogul distribution of torsion angles is within 10 degrees of the torsion angle in question, then that torsion angle is considered an outlier. Any bond that is central to one or more torsion angles identified as an outlier by Mogul will be highlighted in the graph. For rings, the root-mean-square deviation (RMSD) between the ring in question and similar rings identified by Mogul is calculated over all ring torsion angles. If the average RMSD is greater than 60 degrees and the minimal RMSD between the ring in question and any Mogul-identified rings is also greater than 60 degrees, then that ring is considered an outlier. The outliers are highlighted in purple. The color gray indicates Mogul did not find sufficient equivalents in the CSD to analyse the geometry.







5.7 Other polymers [i](#)

There are no such residues in this entry.

5.8 Polymer linkage issues [i](#)

There are no chain breaks in this entry.

6 Fit of model and data [i](#)

6.1 Protein, DNA and RNA chains [i](#)

In the following table, the column labelled ‘#RSRZ > 2’ contains the number (and percentage) of RSRZ outliers, followed by percent RSRZ outliers for the chain as percentile scores relative to all X-ray entries and entries of similar resolution. The OWAB column contains the minimum, median, 95th percentile and maximum values of the occupancy-weighted average B-factor per residue. The column labelled ‘Q < 0.9’ lists the number of (and percentage) of residues with an average occupancy less than 0.9.

Mol	Chain	Analysed	<RSRZ>	#RSRZ>2	OWAB(Å ²)	Q<0.9
1	A	407/422 (96%)	1.08	87 (21%) 0 0	34, 64, 121, 153	0
1	B	411/422 (97%)	0.61	45 (10%) 5 8	28, 53, 89, 112	0
All	All	818/844 (96%)	0.84	132 (16%) 1 2	28, 58, 110, 153	0

All (132) RSRZ outliers are listed below:

Mol	Chain	Res	Type	RSRZ
1	B	300	PHE	7.7
1	A	488	PRO	7.2
1	A	716	TRP	6.0
1	A	355	PHE	5.4
1	A	713	THR	5.3
1	B	715	VAL	4.8
1	A	712	ASN	4.8
1	A	300	PHE	4.7
1	A	506	ILE	4.7
1	A	352	ASP	4.6
1	A	351	LYS	4.6
1	A	567	VAL	4.5
1	B	619	ARG	4.4
1	A	486	LYS	4.4
1	A	715	VAL	4.2
1	B	592[A]	GLU	4.2
1	A	619	ARG	4.1
1	B	616	LEU	4.0
1	A	485	TYR	3.9
1	B	302	LYS	3.8
1	A	507	GLN	3.8
1	A	678	TRP	3.7
1	A	509	GLY	3.7
1	A	677	VAL	3.7

Continued on next page...

Continued from previous page...

Mol	Chain	Res	Type	RSRZ
1	A	591	THR	3.7
1	B	350	THR	3.7
1	A	682	PRO	3.7
1	B	301	LEU	3.7
1	A	389	GLU	3.7
1	A	391	THR	3.7
1	B	718	GLY	3.6
1	A	593	ILE	3.6
1	A	479	LEU	3.6
1	B	310	VAL	3.6
1	B	677	VAL	3.6
1	A	388	ILE	3.5
1	A	588	TYR	3.5
1	B	348	VAL	3.5
1	B	591	THR	3.4
1	A	685	GLY	3.4
1	A	566	ALA	3.4
1	A	551	PHE	3.4
1	B	567	VAL	3.4
1	A	350	THR	3.4
1	A	679	ILE	3.3
1	A	565	PRO	3.3
1	A	415	CYS	3.3
1	A	686	SER	3.3
1	A	469	LYS	3.2
1	B	615	ASP	3.2
1	A	584	PHE	3.1
1	A	714	HIS	3.1
1	B	299	ARG	3.1
1	A	711	TRP	3.1
1	A	386	LYS	3.1
1	B	680	VAL	3.1
1	B	311	VAL	3.1
1	A	683	MET	3.0
1	A	681	PRO	3.0
1	A	322	LEU	3.0
1	A	480	ILE	3.0
1	A	503	GLU	3.0
1	B	684	SER	3.0
1	A	311	VAL	2.9
1	B	620	LYS	2.9
1	B	353	GLN	2.9

Continued on next page...

Continued from previous page...

Mol	Chain	Res	Type	RSRZ
1	A	299	ARG	2.9
1	A	390	SER	2.9
1	B	691	PHE	2.9
1	B	561	TRP	2.9
1	B	667	ARG	2.8
1	A	615	ASP	2.8
1	A	385	ASN	2.8
1	A	416	VAL	2.8
1	B	681	PRO	2.8
1	B	588	TYR	2.7
1	A	375	LYS	2.7
1	B	352	ASP	2.7
1	A	630	LEU	2.7
1	A	594	GLY	2.7
1	A	487	GLN	2.7
1	B	329	HIS	2.6
1	A	680	VAL	2.6
1	A	312	LEU	2.6
1	A	704	PHE	2.6
1	A	505	CYS	2.6
1	A	491	SER	2.5
1	B	351	LYS	2.5
1	A	511	LYS	2.5
1	A	489	ASP	2.5
1	A	321	THR	2.5
1	A	561	TRP	2.5
1	B	312	LEU	2.4
1	B	676	TRP	2.4
1	A	482	TYR	2.4
1	B	477	SER	2.4
1	A	684	SER	2.4
1	B	318	LEU	2.4
1	A	384	VAL	2.4
1	B	682	PRO	2.4
1	B	593	ILE	2.4
1	A	595	VAL	2.3
1	A	676	TRP	2.3
1	A	596	ARG	2.3
1	B	717	LYS	2.3
1	A	409	TRP	2.3
1	A	643	SER	2.3
1	A	353	GLN	2.3

Continued on next page...

Continued from previous page...

Mol	Chain	Res	Type	RSRZ
1	B	375	LYS	2.2
1	B	479	LEU	2.2
1	A	691	PHE	2.2
1	A	370	LYS	2.2
1	A	564	LEU	2.2
1	B	608	GLU	2.2
1	A	446	VAL	2.2
1	A	493	LEU	2.2
1	B	685	GLY	2.2
1	A	645	LYS	2.2
1	A	585	SER	2.1
1	A	617	ASP	2.1
1	A	568	SER	2.1
1	A	500	GLN	2.1
1	A	514	ARG	2.1
1	B	595	VAL	2.1
1	B	633	ILE	2.0
1	A	392	SER	2.0
1	B	596	ARG	2.0
1	A	572	LEU	2.0
1	A	590	GLY	2.0
1	B	686	SER	2.0
1	B	376	ALA	2.0
1	A	508	GLN	2.0

6.2 Non-standard residues in protein, DNA, RNA chains [i](#)

There are no non-standard protein/DNA/RNA residues in this entry.

6.3 Carbohydrates [i](#)

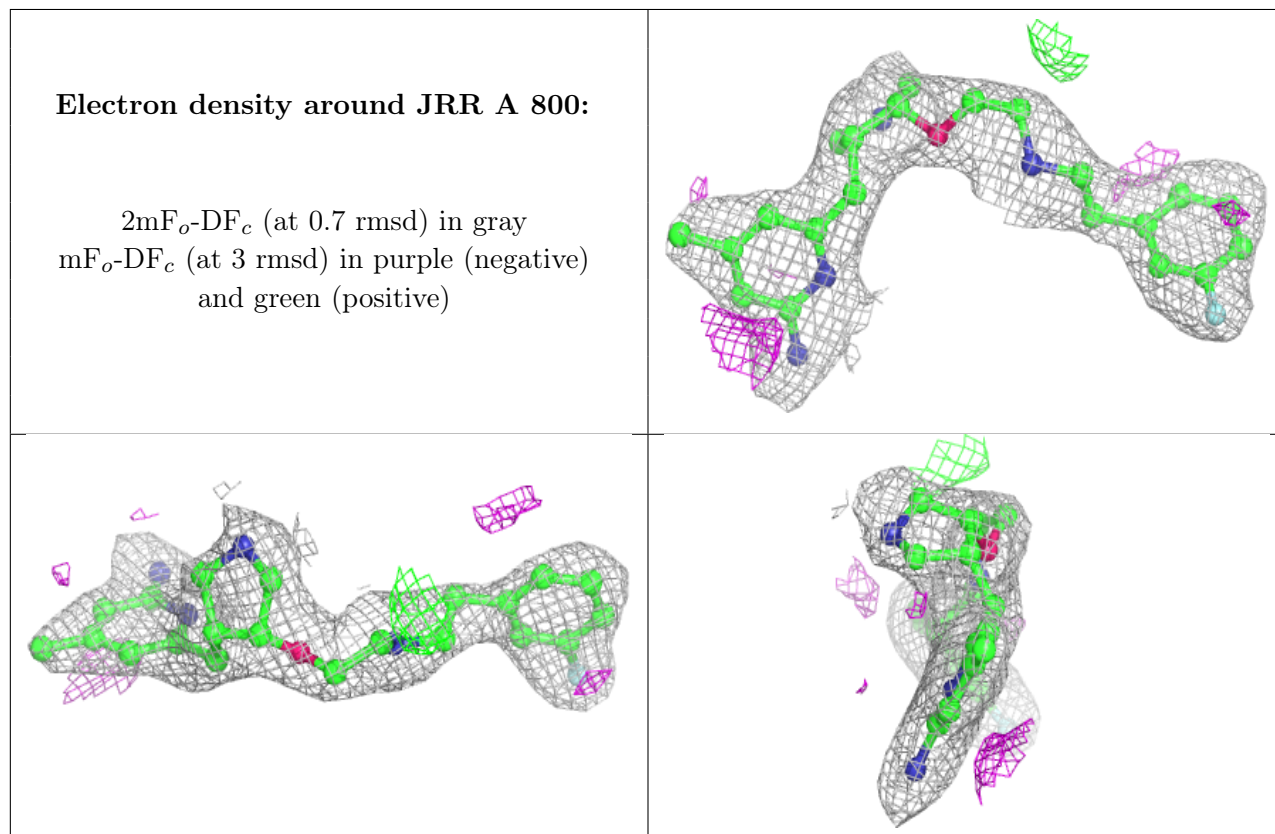
There are no monosaccharides in this entry.

6.4 Ligands [i](#)

In the following table, the Atoms column lists the number of modelled atoms in the group and the number defined in the chemical component dictionary. The B-factors column lists the minimum, median, 95th percentile and maximum values of B factors of atoms in the group. The column labelled 'Q< 0.9' lists the number of atoms with occupancy less than 0.9.

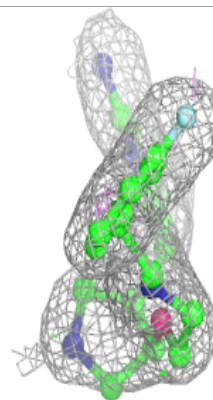
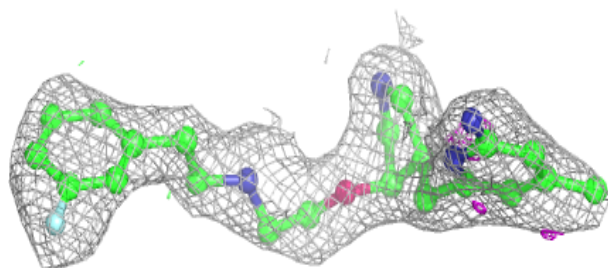
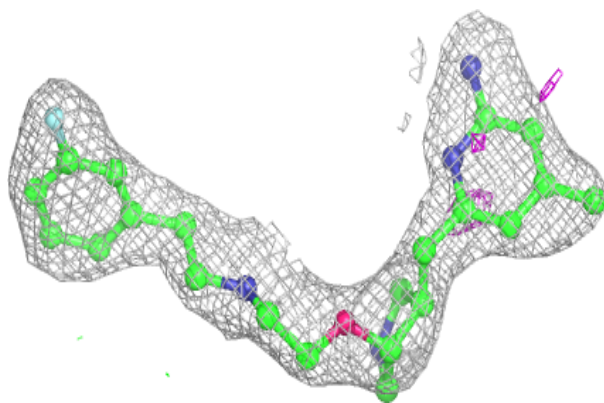
Mol	Type	Chain	Res	Atoms	RSCC	RSR	B-factors(\AA^2)	Q<0.9
4	JRR	A	800	27/27	0.86	0.28	47,54,61,63	0
5	ACT	B	860	4/4	0.86	0.21	79,81,82,83	0
6	EDO	A	890	4/4	0.86	0.20	49,50,51,52	0
4	JRR	B	800	27/27	0.90	0.21	38,49,58,60	0
5	ACT	A	860	4/4	0.92	0.17	84,86,86,88	0
3	H4B	A	760	17/17	0.93	0.24	33,38,46,47	0
3	H4B	B	760	17/17	0.95	0.22	29,38,44,49	0
2	HEM	A	750	43/43	0.95	0.27	36,41,50,54	0
2	HEM	B	750	43/43	0.96	0.21	38,45,49,53	0
7	ZN	A	900	1/1	0.99	0.09	51,51,51,51	0

The following is a graphical depiction of the model fit to experimental electron density of all instances of the Ligand of Interest. In addition, ligands with molecular weight > 250 and outliers as shown on the geometry validation Tables will also be included. Each fit is shown from different orientation to approximate a three-dimensional view.



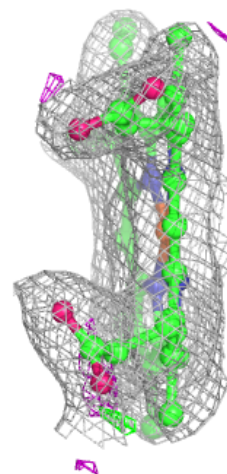
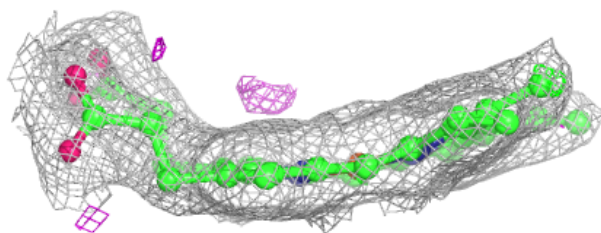
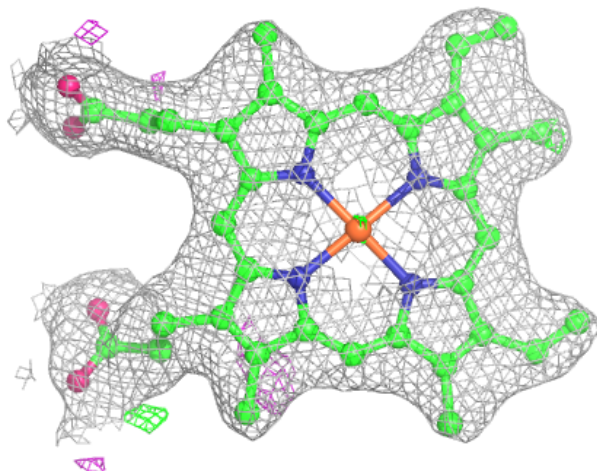
Electron density around JRR B 800:

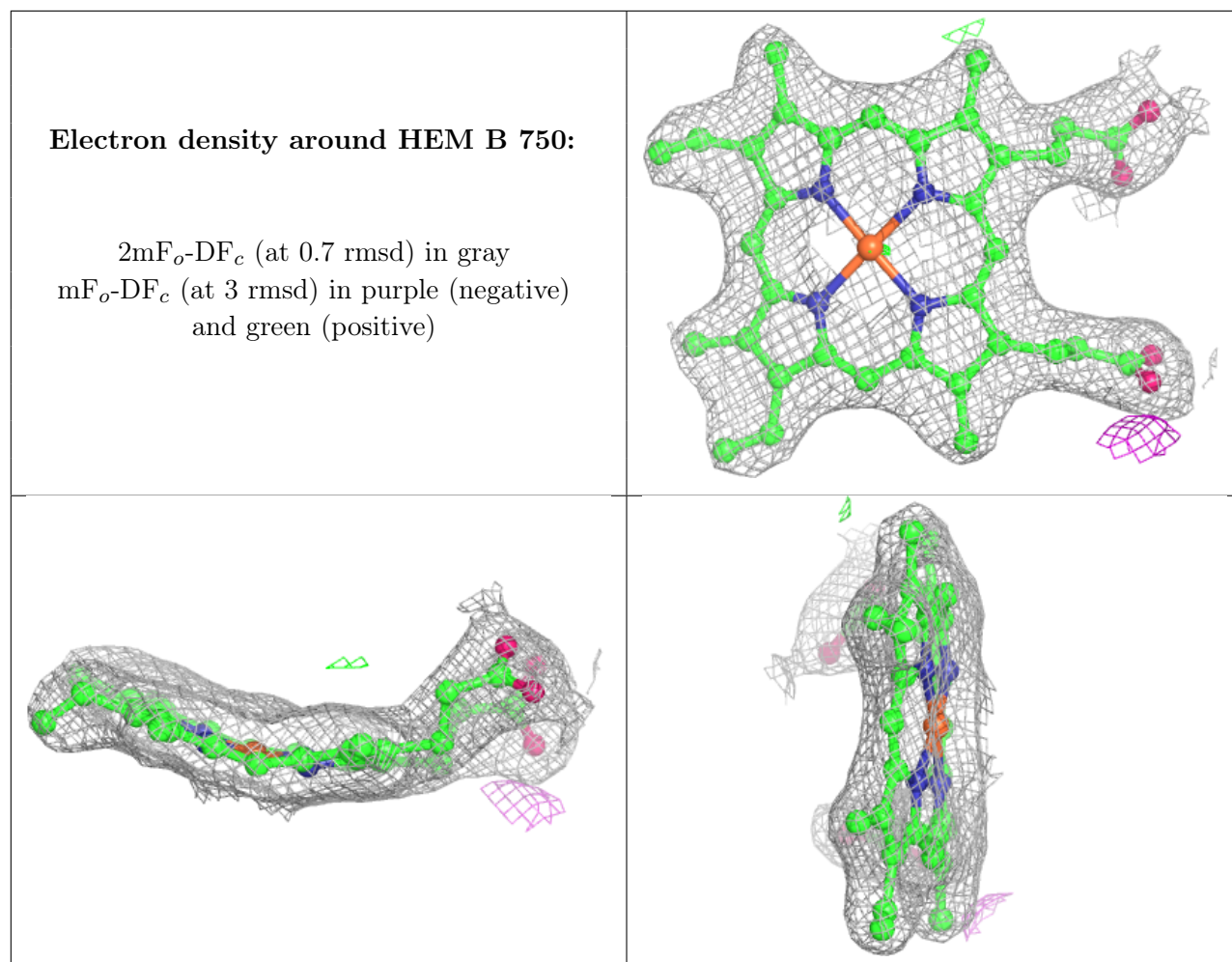
$2mF_o-DF_c$ (at 0.7 rmsd) in gray
 mF_o-DF_c (at 3 rmsd) in purple (negative)
and green (positive)



Electron density around HEM A 750:

$2mF_o-DF_c$ (at 0.7 rmsd) in gray
 mF_o-DF_c (at 3 rmsd) in purple (negative)
and green (positive)





6.5 Other polymers [i](#)

There are no such residues in this entry.