



wwPDB X-ray Structure Validation Summary Report ⓘ

May 21, 2020 – 02:52 pm BST

PDB ID : 4NJE
Title : Crystal structure of Pyrococcus furiosus L-asparaginase with ligand
Authors : Sharma, P.; Tomar, R.; Singh, S.; Yadav, S.P.S.; Ashish; Kundu, B.
Deposited on : 2013-11-09
Resolution : 2.50 Å(reported)

This is a wwPDB X-ray Structure Validation Summary Report for a publicly released PDB entry.

We welcome your comments at validation@mail.wwpdb.org

A user guide is available at

<https://www.wwpdb.org/validation/2017/XrayValidationReportHelp>

with specific help available everywhere you see the ⓘ symbol.

The following versions of software and data (see [references ⓘ](#)) were used in the production of this report:

MolProbity : 4.02b-467
Xtriage (Phenix) : 1.13
EDS : 2.11
Percentile statistics : 20191225.v01 (using entries in the PDB archive December 25th 2019)
Refmac : 5.8.0158
CCP4 : 7.0.044 (Gargrove)
Ideal geometry (proteins) : Engh & Huber (2001)
Ideal geometry (DNA, RNA) : Parkinson et al. (1996)
Validation Pipeline (wwPDB-VP) : 2.11

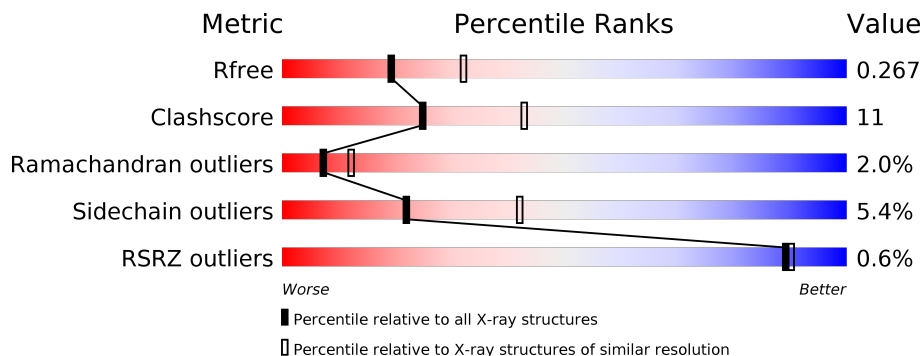
1 Overall quality at a glance

The following experimental techniques were used to determine the structure:

X-RAY DIFFRACTION

The reported resolution of this entry is 2.50 Å.

Percentile scores (ranging between 0-100) for global validation metrics of the entry are shown in the following graphic. The table shows the number of entries on which the scores are based.



Metric	Whole archive (#Entries)	Similar resolution (#Entries, resolution range(Å))
R_{free}	130704	4661 (2.50-2.50)
Clashscore	141614	5346 (2.50-2.50)
Ramachandran outliers	138981	5231 (2.50-2.50)
Sidechain outliers	138945	5233 (2.50-2.50)
RSRZ outliers	127900	4559 (2.50-2.50)

The table below summarises the geometric issues observed across the polymeric chains and their fit to the electron density. The red, orange, yellow and green segments on the lower bar indicate the fraction of residues that contain outliers for ≥ 3 , 2, 1 and 0 types of geometric quality criteria respectively. A grey segment represents the fraction of residues that are not modelled. The numeric value for each fraction is indicated below the corresponding segment, with a dot representing fractions $\leq 5\%$. The upper red bar (where present) indicates the fraction of residues that have poor fit to the electron density. The numeric value is given above the bar.

Mol	Chain	Length	Quality of chain
1	A	204	<p>71% 15% 11%</p>
2	B	147	<p>65% 20% 14%</p>

2 Entry composition i

There are 4 unique types of molecules in this entry. The entry contains 2422 atoms, of which 0 are hydrogens and 0 are deuteriums.

In the tables below, the ZeroOcc column contains the number of atoms modelled with zero occupancy, the AltConf column contains the number of residues with at least one atom in alternate conformation and the Trace column contains the number of residues modelled with at most 2 atoms.

- Molecule 1 is a protein called L-asparaginase.

Mol	Chain	Residues	Atoms					ZeroOcc	AltConf	Trace
			Total	C	N	O	S			
1	A	182	1391	884	225	273	9	0	0	0

There are 22 discrepancies between the modelled and reference sequences:

Chain	Residue	Modelled	Actual	Comment	Reference
A	-21	MET	-	expression tag	UNP Q8TZE8
A	-20	GLY	-	expression tag	UNP Q8TZE8
A	-19	SER	-	expression tag	UNP Q8TZE8
A	-18	SER	-	expression tag	UNP Q8TZE8
A	-17	HIS	-	expression tag	UNP Q8TZE8
A	-16	HIS	-	expression tag	UNP Q8TZE8
A	-15	HIS	-	expression tag	UNP Q8TZE8
A	-14	HIS	-	expression tag	UNP Q8TZE8
A	-13	HIS	-	expression tag	UNP Q8TZE8
A	-12	HIS	-	expression tag	UNP Q8TZE8
A	-11	SER	-	expression tag	UNP Q8TZE8
A	-10	SER	-	expression tag	UNP Q8TZE8
A	-9	GLY	-	expression tag	UNP Q8TZE8
A	-8	LEU	-	expression tag	UNP Q8TZE8
A	-7	VAL	-	expression tag	UNP Q8TZE8
A	-6	PRO	-	expression tag	UNP Q8TZE8
A	-5	ARG	-	expression tag	UNP Q8TZE8
A	-4	GLY	-	expression tag	UNP Q8TZE8
A	-3	SER	-	expression tag	UNP Q8TZE8
A	-2	HIS	-	expression tag	UNP Q8TZE8
A	-1	MET	-	expression tag	UNP Q8TZE8
A	0	ALA	-	expression tag	UNP Q8TZE8

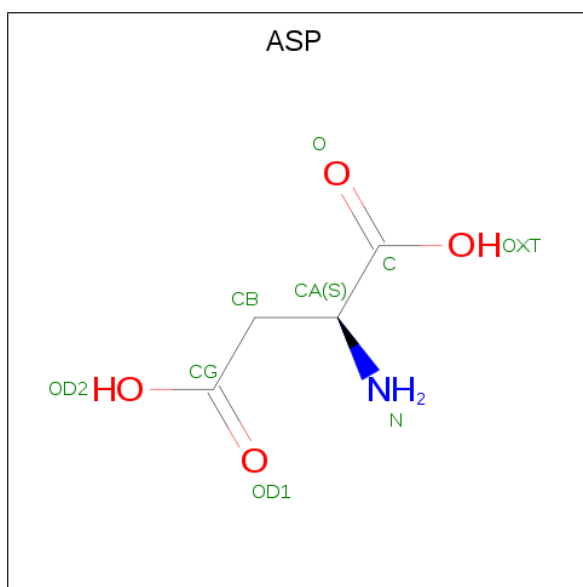
- Molecule 2 is a protein called L-asparaginase.

Mol	Chain	Residues	Atoms					ZeroOcc	AltConf	Trace
			Total	C	N	O	S			
2	B	127	972	622	166	178	6	0	0	0

There are 22 discrepancies between the modelled and reference sequences:

Chain	Residue	Modelled	Actual	Comment	Reference
B	180	MET	-	expression tag	UNP Q8TZE8
B	181	GLY	-	expression tag	UNP Q8TZE8
B	182	SER	-	expression tag	UNP Q8TZE8
B	183	SER	-	expression tag	UNP Q8TZE8
B	184	HIS	-	expression tag	UNP Q8TZE8
B	185	HIS	-	expression tag	UNP Q8TZE8
B	186	HIS	-	expression tag	UNP Q8TZE8
B	187	HIS	-	expression tag	UNP Q8TZE8
B	188	HIS	-	expression tag	UNP Q8TZE8
B	189	HIS	-	expression tag	UNP Q8TZE8
B	190	SER	-	expression tag	UNP Q8TZE8
B	191	SER	-	expression tag	UNP Q8TZE8
B	192	GLY	-	expression tag	UNP Q8TZE8
B	193	LEU	-	expression tag	UNP Q8TZE8
B	194	VAL	-	expression tag	UNP Q8TZE8
B	195	PRO	-	expression tag	UNP Q8TZE8
B	196	ARG	-	expression tag	UNP Q8TZE8
B	197	GLY	-	expression tag	UNP Q8TZE8
B	198	SER	-	expression tag	UNP Q8TZE8
B	199	HIS	-	expression tag	UNP Q8TZE8
B	200	MET	-	expression tag	UNP Q8TZE8
B	201	ALA	-	expression tag	UNP Q8TZE8

- Molecule 3 is ASPARTIC ACID (three-letter code: ASP) (formula: C₄H₇NO₄).



Mol	Chain	Residues	Atoms				ZeroOcc	AltConf
			Total	C	N	O		
3	A	1	9	4	1	4	0	0

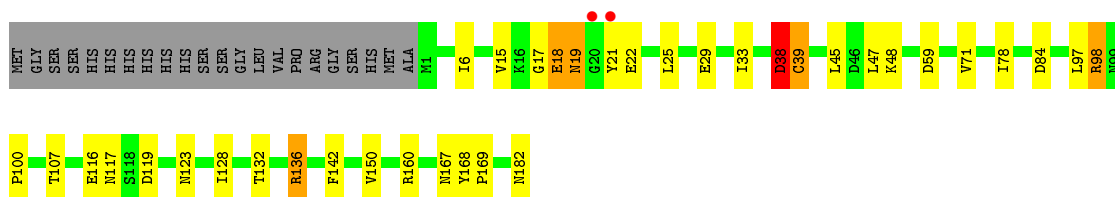
- Molecule 4 is water.

Mol	Chain	Residues	Atoms		ZeroOcc	AltConf
			Total	O		
4	A	34	34	34	0	0
4	B	16	16	16	0	0

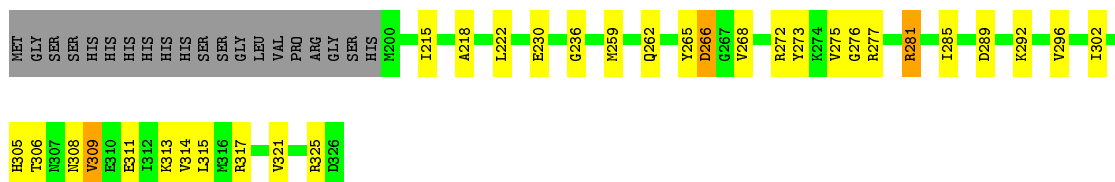
3 Residue-property plots [i](#)

These plots are drawn for all protein, RNA and DNA chains in the entry. The first graphic for a chain summarises the proportions of the various outlier classes displayed in the second graphic. The second graphic shows the sequence view annotated by issues in geometry and electron density. Residues are color-coded according to the number of geometric quality criteria for which they contain at least one outlier: green = 0, yellow = 1, orange = 2 and red = 3 or more. A red dot above a residue indicates a poor fit to the electron density ($RSRZ > 2$). Stretches of 2 or more consecutive residues without any outlier are shown as a green connector. Residues present in the sample, but not in the model, are shown in grey.

- Molecule 1: L-asparaginase



- Molecule 2: L-asparaginase



4 Data and refinement statistics

Property	Value	Source
Space group	P 65 2 2	Depositor
Cell constants a, b, c, α , β , γ	91.59Å 91.59Å 188.77Å 90.00° 90.00° 120.00°	Depositor
Resolution (Å)	60.72 – 2.50 60.72 – 2.50	Depositor EDS
% Data completeness (in resolution range)	93.5 (60.72-2.50) 94.5 (60.72-2.50)	Depositor EDS
R_{merge}	0.13	Depositor
R_{sym}	(Not available)	Depositor
$\langle I/\sigma(I) \rangle$ ¹	3.23 (at 2.51Å)	Xtrriage
Refinement program	PHENIX (phenix.refine: 1.7.2_869)	Depositor
R, R_{free}	0.228 , 0.270 0.232 , 0.267	Depositor DCC
R_{free} test set	816 reflections (5.10%)	wwPDB-VP
Wilson B-factor (Å ²)	43.8	Xtrriage
Anisotropy	0.401	Xtrriage
Bulk solvent k_{sol} (e/Å ³), B_{sol} (Å ²)	0.35 , 50.0	EDS
L-test for twinning ²	$\langle L \rangle = 0.52$, $\langle L^2 \rangle = 0.37$	Xtrriage
Estimated twinning fraction	No twinning to report.	Xtrriage
F_o, F_c correlation	0.93	EDS
Total number of atoms	2422	wwPDB-VP
Average B, all atoms (Å ²)	49.0	wwPDB-VP

Xtrriage's analysis on translational NCS is as follows: *The largest off-origin peak in the Patterson function is 4.74% of the height of the origin peak. No significant pseudotranslation is detected.*

¹Intensities estimated from amplitudes.

²Theoretical values of $\langle |L| \rangle$, $\langle L^2 \rangle$ for acentric reflections are 0.5, 0.333 respectively for untwinned datasets, and 0.375, 0.2 for perfectly twinned datasets.

5 Model quality [i](#)

5.1 Standard geometry [i](#)

The Z score for a bond length (or angle) is the number of standard deviations the observed value is removed from the expected value. A bond length (or angle) with $|Z| > 5$ is considered an outlier worth inspection. RMSZ is the root-mean-square of all Z scores of the bond lengths (or angles).

Mol	Chain	Bond lengths		Bond angles	
		RMSZ	# Z >5	RMSZ	# Z >5
1	A	0.45	0/1412	0.58	0/1913
2	B	0.39	0/984	0.54	0/1328
All	All	0.43	0/2396	0.57	0/3241

There are no bond length outliers.

There are no bond angle outliers.

There are no chirality outliers.

There are no planarity outliers.

5.2 Too-close contacts [i](#)

In the following table, the Non-H and H(model) columns list the number of non-hydrogen atoms and hydrogen atoms in the chain respectively. The H(added) column lists the number of hydrogen atoms added and optimized by MolProbity. The Clashes column lists the number of clashes within the asymmetric unit, whereas Symm-Clashes lists symmetry related clashes.

Mol	Chain	Non-H	H(model)	H(added)	Clashes	Symm-Clashes
1	A	1391	0	1412	26	0
2	B	972	0	1025	29	0
3	A	9	0	3	1	0
4	A	34	0	0	1	0
4	B	16	0	0	1	0
All	All	2422	0	2440	52	0

The all-atom clashscore is defined as the number of clashes found per 1000 atoms (including hydrogen atoms). The all-atom clashscore for this structure is 11.

The worst 5 of 52 close contacts within the same asymmetric unit are listed below, sorted by their clash magnitude.

Atom-1	Atom-2	Interatomic distance (Å)	Clash overlap (Å)
1:A:18:GLU:OE1	1:A:18:GLU:HA	1.61	1.01
2:B:289:ASP:OD2	2:B:325:ARG:NH1	2.15	0.79
2:B:289:ASP:OD2	2:B:325:ARG:HG3	1.82	0.79
1:A:29:GLU:OE2	4:A:319:HOH:O	2.06	0.74
2:B:265:TYR:O	2:B:266:ASP:HB2	1.90	0.71

There are no symmetry-related clashes.

5.3 Torsion angles [i](#)

5.3.1 Protein backbone [i](#)

In the following table, the Percentiles column shows the percent Ramachandran outliers of the chain as a percentile score with respect to all X-ray entries followed by that with respect to entries of similar resolution.

The Analysed column shows the number of residues for which the backbone conformation was analysed, and the total number of residues.

Mol	Chain	Analysed	Favoured	Allowed	Outliers	Percentiles	
1	A	180/204 (88%)	170 (94%)	6 (3%)	4 (2%)	6	10
2	B	125/147 (85%)	118 (94%)	5 (4%)	2 (2%)	9	17
All	All	305/351 (87%)	288 (94%)	11 (4%)	6 (2%)	7	12

5 of 6 Ramachandran outliers are listed below:

Mol	Chain	Res	Type
1	A	19	ASN
1	A	38	ASP
1	A	98	ARG
2	B	266	ASP
1	A	39	CYS

5.3.2 Protein sidechains [i](#)

In the following table, the Percentiles column shows the percent sidechain outliers of the chain as a percentile score with respect to all X-ray entries followed by that with respect to entries of similar resolution.

The Analysed column shows the number of residues for which the sidechain conformation was analysed, and the total number of residues.

Mol	Chain	Analysed	Rotameric	Outliers	Percentiles	
1	A	156/174 (90%)	145 (93%)	11 (7%)	14	28
2	B	103/120 (86%)	100 (97%)	3 (3%)	42	69
All	All	259/294 (88%)	245 (95%)	14 (5%)	22	42

5 of 14 residues with a non-rotameric sidechain are listed below:

Mol	Chain	Res	Type
1	A	97	LEU
1	A	116	GLU
2	B	259	MET
1	A	71	VAL
1	A	182	ASN

Some sidechains can be flipped to improve hydrogen bonding and reduce clashes. There are no such sidechains identified.

5.3.3 RNA [i](#)

There are no RNA molecules in this entry.

5.4 Non-standard residues in protein, DNA, RNA chains [i](#)

There are no non-standard protein/DNA/RNA residues in this entry.

5.5 Carbohydrates [i](#)

There are no carbohydrates in this entry.

5.6 Ligand geometry [i](#)

1 ligand is modelled in this entry.

There are no bond length outliers.

There are no bond angle outliers.

There are no chirality outliers.

There are no torsion outliers.

There are no ring outliers.

No monomer is involved in short contacts.

5.7 Other polymers [i](#)

There are no such residues in this entry.

5.8 Polymer linkage issues [i](#)

There are no chain breaks in this entry.

6 Fit of model and data [i](#)

6.1 Protein, DNA and RNA chains [i](#)

In the following table, the column labelled ‘#RSRZ> 2’ contains the number (and percentage) of RSRZ outliers, followed by percent RSRZ outliers for the chain as percentile scores relative to all X-ray entries and entries of similar resolution. The OWAB column contains the minimum, median, 95th percentile and maximum values of the occupancy-weighted average B-factor per residue. The column labelled ‘Q< 0.9’ lists the number of (and percentage) of residues with an average occupancy less than 0.9.

Mol	Chain	Analysed	<RSRZ>	#RSRZ>2	OWAB(Å ²)	Q<0.9
1	A	182/204 (89%)	-0.26	2 (1%) 80 82	30, 43, 78, 89	11 (6%)
2	B	127/147 (86%)	-0.28	0 100 100	34, 50, 71, 76	1 (0%)
All	All	309/351 (88%)	-0.26	2 (0%) 89 90	30, 46, 73, 89	12 (3%)

All (2) RSRZ outliers are listed below:

Mol	Chain	Res	Type	RSRZ
1	A	21	TYR	2.5
1	A	20	GLY	2.4

6.2 Non-standard residues in protein, DNA, RNA chains [i](#)

There are no non-standard protein/DNA/RNA residues in this entry.

6.3 Carbohydrates [i](#)

There are no carbohydrates in this entry.

6.4 Ligands [i](#)

In the following table, the Atoms column lists the number of modelled atoms in the group and the number defined in the chemical component dictionary. The B-factors column lists the minimum, median, 95th percentile and maximum values of B factors of atoms in the group. The column labelled ‘Q< 0.9’ lists the number of atoms with occupancy less than 0.9.

Mol	Type	Chain	Res	Atoms	RSCC	RSR	B-factors(Å ²)	Q<0.9
3	ASP	A	201	9/9	0.97	0.11	33,37,41,43	0

6.5 Other polymers

There are no such residues in this entry.