



Full wwPDB EM Validation Report ⓘ

May 6, 2026 – 05:15 PM EDT

PDB ID : 9NI5 / pdb_00009ni5
EMDB ID : EMD-49453
Title : Cryo-EM structure of the PI3K alpha/KRas/HER3 phosphopeptide complex on POPC/POPS/PIP2 nanodiscs
Authors : Torosyan, H.; Natalia, J.; Verba, K.A.
Deposited on : 2025-02-25
Resolution : 2.89 Å(reported)

This is a Full wwPDB EM Validation Report for a publicly released PDB entry.

We welcome your comments at validation@mail.wwpdb.org

A user guide is available at

<https://www.wwpdb.org/validation/2017/EMValidationReportHelp>
with specific help available everywhere you see the ⓘ symbol.

The types of validation reports are described at

<http://www.wwpdb.org/validation/2017/FAQs#types>.

The following versions of software and data (see [references ⓘ](#)) were used in the production of this report:

EMDB validation analysis : 0.0.1.dev132
Mogul : 2022.3.0, CSD as543be (2022)
MolProbity : 4-5-2 with Phenix2.0
Buster-report : wwPDB partial adaption of 1.1.7 (2018)
Percentile statistics : 20250101.v01 (using entries in the PDB archive January 1st 2025)
EM percentile statistics : 202505.v01 (Using data in the EMDB archive up until May 2025)
MapQ : 1.9.13
Ideal geometry (proteins) : Engh & Huber (2001)
Ideal geometry (DNA, RNA) : Parkinson et al. (1996)
Validation Pipeline (wwPDB-VP) : 2.49

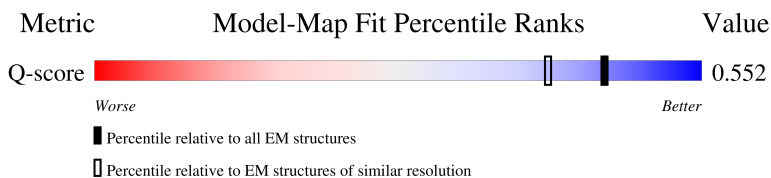
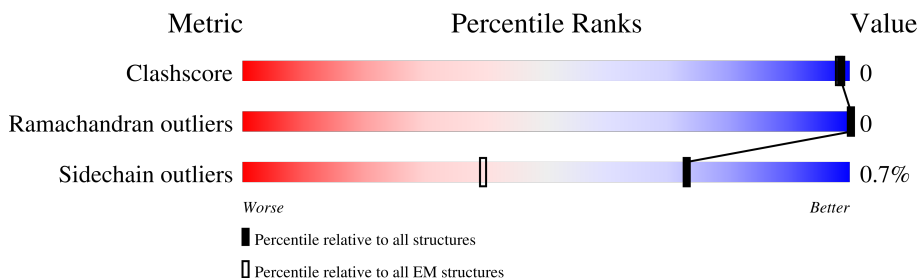
1 Overall quality at a glance

The following experimental techniques were used to determine the structure:

ELECTRON MICROSCOPY

The reported resolution of this entry is 2.89 Å.

Percentile scores (ranging between 0-100) for global validation metrics of the entry are shown in the following graphic. The table shows the number of entries on which the scores are based.



Metric	Whole archive (#Entries)	EM structures (#Entries)	Similar EM resolution (#Entries, resolution range(Å))
Clashscore	229148	23984	-
Ramachandran outliers	224038	23583	-
Sidechain outliers	223484	23102	-
Q-score	-	25397	12148 (2.39 - 3.39)

The table below summarises the geometric issues observed across the polymeric chains and their fit to the map. The red, orange, yellow and green segments of the bar indicate the fraction of residues that contain outliers for ≥ 3 , 2, 1 and 0 types of geometric quality criteria respectively. A grey segment represents the fraction of residues that are not modelled. The numeric value for each fraction is indicated below the corresponding segment, with a dot representing fractions $\leq 5\%$. The upper red bar (where present) indicates the fraction of residues that have poor fit to the EM map (all-atom inclusion $< 40\%$). The numeric value is given above the bar.

Mol	Chain	Length	Quality of chain
1	A	1096	
2	C	189	

2 Entry composition

There are 5 unique types of molecules in this entry. The entry contains 17714 atoms, of which 8839 are hydrogens and 0 are deuteriums.

In the tables below, the AltConf column contains the number of residues with at least one atom in alternate conformation and the Trace column contains the number of residues modelled with at most 2 atoms.

- Molecule 1 is a protein called Phosphatidylinositol 4,5-bisphosphate 3-kinase catalytic sub-unit alpha isoform.

Mol	Chain	Residues	Atoms						AltConf	Trace
1	A	910	Total	C	H	N	O	S	0	0
			14880	4756	7444	1273	1343	64		

There are 28 discrepancies between the modelled and reference sequences:

Chain	Residue	Modelled	Actual	Comment	Reference
A	-27	MET	-	expression tag	UNP P42336
A	-26	SER	-	expression tag	UNP P42336
A	-25	TYR	-	expression tag	UNP P42336
A	-24	TYR	-	expression tag	UNP P42336
A	-23	HIS	-	expression tag	UNP P42336
A	-22	HIS	-	expression tag	UNP P42336
A	-21	HIS	-	expression tag	UNP P42336
A	-20	HIS	-	expression tag	UNP P42336
A	-19	HIS	-	expression tag	UNP P42336
A	-18	HIS	-	expression tag	UNP P42336
A	-17	ASP	-	expression tag	UNP P42336
A	-16	TYR	-	expression tag	UNP P42336
A	-15	ASP	-	expression tag	UNP P42336
A	-14	ILE	-	expression tag	UNP P42336
A	-13	PRO	-	expression tag	UNP P42336
A	-12	THR	-	expression tag	UNP P42336
A	-11	THR	-	expression tag	UNP P42336
A	-10	GLU	-	expression tag	UNP P42336
A	-9	ASN	-	expression tag	UNP P42336
A	-8	LEU	-	expression tag	UNP P42336
A	-7	TYR	-	expression tag	UNP P42336
A	-6	PHE	-	expression tag	UNP P42336
A	-5	GLN	-	expression tag	UNP P42336
A	-4	GLY	-	expression tag	UNP P42336
A	-3	ALA	-	expression tag	UNP P42336
A	-2	MET	-	expression tag	UNP P42336
A	-1	GLY	-	expression tag	UNP P42336

Continued on next page...

Continued from previous page...

Chain	Residue	Modelled	Actual	Comment	Reference
A	0	SER	-	expression tag	UNP P42336

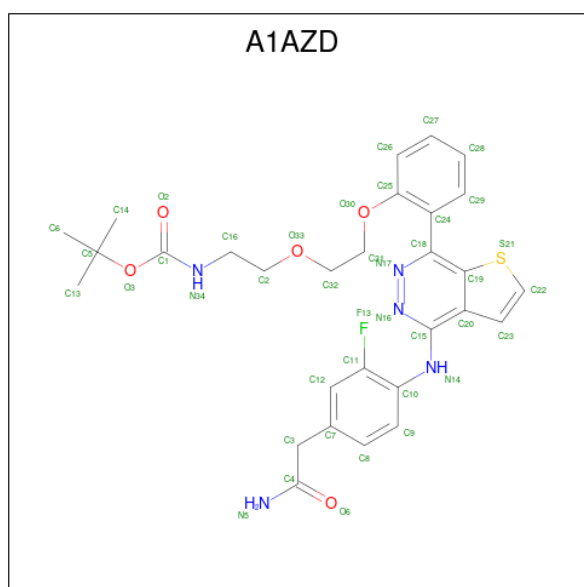
- Molecule 2 is a protein called Isoform 2B of GTPase KRas.

Mol	Chain	Residues	Atoms						AltConf	Trace
2	C	171	Total	C	H	N	O	S	0	0
			2715	854	1350	235	269	7		

There is a discrepancy between the modelled and reference sequences:

Chain	Residue	Modelled	Actual	Comment	Reference
C	0	GLY	-	expression tag	UNP P01116

- Molecule 3 is tert-butyl [2-(2-[[[(2P)-2-{4-[4-(2-amino-2-oxoethyl)-2-fluoroanilino]thieno [2,3-d]pyridazin-7-yl}phenyl]oxy}ethoxy)ethyl]carbamate (CCD ID: A1AZD) (formula: C₂₉H₃₂FN₅O₅S) (labeled as "Ligand of Interest" by depositor).

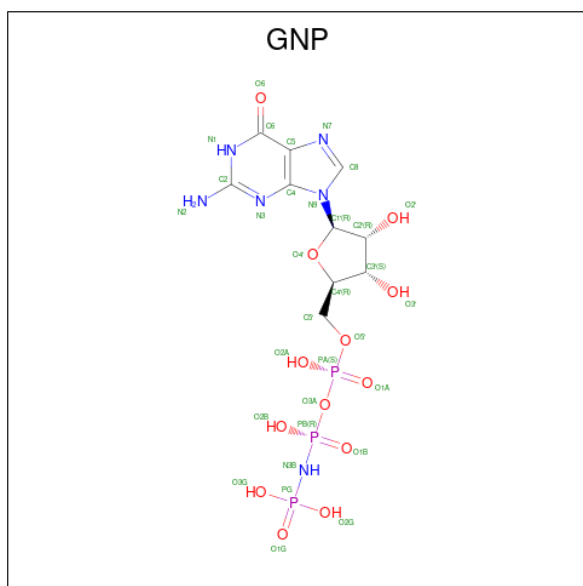


Mol	Chain	Residues	Atoms							AltConf
3	A	1	Total	C	F	H	N	O	S	0
			73	29	1	32	5	5	1	

- Molecule 4 is MAGNESIUM ION (CCD ID: MG) (formula: Mg) (labeled as "Ligand of Interest" by depositor).

Mol	Chain	Residues	Atoms		AltConf
4	C	1	Total	Mg	0
			1	1	

- Molecule 5 is PHOSPHOAMINOPHOSPHONIC ACID-GUANYLATE ESTER (CCD ID: GNP) (formula: $\text{C}_{10}\text{H}_{17}\text{N}_6\text{O}_{13}\text{P}_3$) (labeled as "Ligand of Interest" by depositor).



Mol	Chain	Residues	Atoms						AltConf
5	C	1	Total	C	H	N	O	P	0
			45	10	13	6	13	3	

4 Experimental information

Property	Value	Source
EM reconstruction method	SINGLE PARTICLE	Depositor
Imposed symmetry	POINT, Not provided	
Number of particles used	111698	Depositor
Resolution determination method	FSC 0.143 CUT-OFF	Depositor
CTF correction method	PHASE FLIPPING AND AMPLITUDE CORRECTION	Depositor
Microscope	TFS KRIOS	Depositor
Voltage (kV)	300	Depositor
Electron dose ($e^-/\text{\AA}^2$)	47.7	Depositor
Minimum defocus (nm)	1000	Depositor
Maximum defocus (nm)	2000	Depositor
Magnification	105000	Depositor
Image detector	GATAN K3 (6k x 4k)	Depositor
Maximum map value	3.828	Depositor
Minimum map value	-2.075	Depositor
Average map value	0.000	Depositor
Map value standard deviation	0.052	Depositor
Recommended contour level	0.376	Depositor
Map size (\AA)	366.8672, 366.8672, 366.8672	wwPDB
Map dimensions	448, 448, 448	wwPDB
Map angles ($^\circ$)	90.0, 90.0, 90.0	wwPDB
Pixel spacing (\AA)	0.8189, 0.8189, 0.8189	Depositor

5 Model quality [i](#)

5.1 Standard geometry [i](#)

Bond lengths and bond angles in the following residue types are not validated in this section: GNP, MG, A1AZD

The Z score for a bond length (or angle) is the number of standard deviations the observed value is removed from the expected value. A bond length (or angle) with $|Z| > 5$ is considered an outlier worth inspection. RMSZ is the root-mean-square of all Z scores of the bond lengths (or angles).

Mol	Chain	Bond lengths		Bond angles	
		RMSZ	# $ Z > 5$	RMSZ	# $ Z > 5$
1	A	0.85	14/7603 (0.2%)	1.35	23/10273 (0.2%)
2	C	0.97	9/1386 (0.6%)	1.31	8/1867 (0.4%)
All	All	0.87	23/8989 (0.3%)	1.35	31/12140 (0.3%)

Chiral center outliers are detected by calculating the chiral volume of a chiral center and verifying if the center is modelled as a planar moiety or with the opposite hand. A planarity outlier is detected by checking planarity of atoms in a peptide group, atoms in a mainchain group or atoms of a sidechain that are expected to be planar.

Mol	Chain	#Chirality outliers	#Planarity outliers
1	A	0	4
2	C	0	2
All	All	0	6

All (23) bond length outliers are listed below:

Mol	Chain	Res	Type	Atoms	Z	Observed(Å)	Ideal(Å)
1	A	673	SER	CA-CB	-9.39	1.37	1.53
1	A	1048	HIS	CE1-NE2	-8.66	1.23	1.32
1	A	1048	HIS	CD2-NE2	-7.88	1.29	1.37
2	C	68	ARG	CZ-NH2	-7.62	1.23	1.33
2	C	73	ARG	CZ-NH2	-7.44	1.23	1.33
1	A	689	GLU	C-O	-7.31	1.14	1.24
1	A	627	LYS	C-O	-7.01	1.15	1.24
1	A	844	CYS	C-O	-6.79	1.14	1.23
2	C	73	ARG	CZ-NH1	-6.61	1.23	1.32
2	C	164	ARG	CZ-NH2	-6.58	1.24	1.33
1	A	1065	HIS	CE1-NE2	-6.48	1.26	1.32
2	C	68	ARG	CZ-NH1	-6.37	1.23	1.32
1	A	936	HIS	CE1-NE2	-6.33	1.26	1.32
2	C	164	ARG	CZ-NH1	-5.87	1.24	1.32

Continued on next page...

Continued from previous page...

Mol	Chain	Res	Type	Atoms	Z	Observed(Å)	Ideal(Å)
1	A	859	GLN	CD-NE2	-5.81	1.21	1.33
1	A	807	LEU	C-O	-5.79	1.16	1.24
1	A	1065	HIS	CD2-NE2	-5.79	1.31	1.37
1	A	936	HIS	CD2-NE2	-5.75	1.31	1.37
1	A	308	SER	CA-CB	-5.27	1.44	1.53
1	A	1048	HIS	CG-CD2	-5.25	1.30	1.35
2	C	68	ARG	C-O	-5.24	1.18	1.24
2	C	73	ARG	CD-NE	-5.05	1.39	1.46
2	C	68	ARG	CD-NE	-5.02	1.39	1.46

All (31) bond angle outliers are listed below:

Mol	Chain	Res	Type	Atoms	Z	Observed(°)	Ideal(°)
1	A	859	GLN	OE1-CD-NE2	-9.01	113.59	122.60
1	A	589	ASP	CA-CB-CG	7.71	120.31	112.60
1	A	1016	PHE	CA-CB-CG	6.78	120.58	113.80
1	A	932	ILE	N-CA-C	6.73	119.66	113.20
1	A	674	GLU	N-CA-CB	-6.63	100.48	111.49
1	A	111	LYS	N-CA-C	-6.56	104.31	112.90
1	A	970	GLU	N-CA-C	-6.31	100.93	110.70
1	A	109	GLU	N-CA-C	-6.17	104.92	112.88
1	A	916	ARG	NE-CZ-NH2	6.11	124.70	119.20
1	A	140	ARG	NE-CZ-NH2	6.02	124.62	119.20
1	A	300	ASP	CA-CB-CG	6.00	118.60	112.60
2	C	68	ARG	CD-NE-CZ	5.91	132.68	124.40
2	C	163	ILE	CA-C-N	5.87	128.07	120.44
2	C	163	ILE	C-N-CA	5.87	128.07	120.44
2	C	164	ARG	CD-NE-CZ	5.86	132.61	124.40
1	A	830	ASP	CA-CB-CG	5.68	118.28	112.60
2	C	67	MET	CA-C-N	5.67	127.87	120.28
2	C	67	MET	C-N-CA	5.67	127.87	120.28
1	A	689	GLU	N-CA-CB	-5.55	101.68	110.28
1	A	936	HIS	CA-C-O	-5.47	114.25	120.32
1	A	915	ASP	CA-CB-CG	5.46	118.06	112.60
1	A	959	ASP	CA-CB-CG	5.46	118.06	112.60
1	A	743	ASP	CA-CB-CG	5.43	118.03	112.60
1	A	110	GLU	N-CA-C	-5.28	106.89	113.38
2	C	68	ARG	N-CA-C	5.22	116.97	111.28
2	C	135	ARG	NE-CZ-NH2	5.15	123.83	119.20
1	A	485	LYS	N-CA-C	5.11	117.77	109.24
1	A	899	ARG	NE-CZ-NH2	5.10	123.79	119.20
1	A	154	ARG	NE-CZ-NH2	5.08	123.77	119.20

Continued on next page...

Continued from previous page...

Mol	Chain	Res	Type	Atoms	Z	Observed(°)	Ideal(°)
1	A	1048	HIS	CA-CB-CG	5.07	118.87	113.80
1	A	936	HIS	CB-CA-C	5.00	118.75	109.70

There are no chirality outliers.

All (6) planarity outliers are listed below:

Mol	Chain	Res	Type	Group
1	A	108	ARG	Sidechain
1	A	309	ARG	Sidechain
1	A	310	ARG	Sidechain
1	A	979	ARG	Sidechain
2	C	164	ARG	Sidechain
2	C	73	ARG	Sidechain

5.2 Too-close contacts ⓘ

In the following table, the Non-H and H(model) columns list the number of non-hydrogen atoms and hydrogen atoms in the chain respectively. The H(added) column lists the number of hydrogen atoms added and optimized by MolProbity. The Clashes column lists the number of clashes within the asymmetric unit, whereas Symm-Clashes lists symmetry-related clashes.

Mol	Chain	Non-H	H(model)	H(added)	Clashes	Symm-Clashes
1	A	7436	7444	7436	3	0
2	C	1365	1350	1347	1	0
3	A	41	32	0	1	0
4	C	1	0	0	0	0
5	C	32	13	13	1	0
All	All	8875	8839	8796	4	0

The all-atom clashscore is defined as the number of clashes found per 1000 atoms (including hydrogen atoms). The all-atom clashscore for this structure is 0.

All (4) close contacts within the same asymmetric unit are listed below, sorted by their clash magnitude.

Atom-1	Atom-2	Interatomic distance (Å)	Clash overlap (Å)
2:C:13:GLY:H	5:C:202:GNP:HNB3	1.67	0.42
1:A:744:PHE:O	1:A:744:PHE:CD1	2.73	0.42
1:A:287:LEU:HD21	3:A:1101:A1AZD:C27	2.51	0.41
1:A:356:VAL:H	1:A:373:THR:HG22	1.86	0.40

There are no symmetry-related clashes.

5.3 Torsion angles [i](#)

5.3.1 Protein backbone [i](#)

In the following table, the Percentiles column shows the percent Ramachandran outliers of the chain as a percentile score with respect to all PDB entries followed by that with respect to all EM entries.

The Analysed column shows the number of residues for which the backbone conformation was analysed, and the total number of residues.

Mol	Chain	Analysed	Favoured	Allowed	Outliers	Percentiles	
1	A	898/1096 (82%)	883 (98%)	15 (2%)	0	100	100
2	C	169/189 (89%)	165 (98%)	4 (2%)	0	100	100
All	All	1067/1285 (83%)	1048 (98%)	19 (2%)	0	100	100

There are no Ramachandran outliers to report.

5.3.2 Protein sidechains [i](#)

In the following table, the Percentiles column shows the percent sidechain outliers of the chain as a percentile score with respect to all PDB entries followed by that with respect to all EM entries.

The Analysed column shows the number of residues for which the sidechain conformation was analysed, and the total number of residues.

Mol	Chain	Analysed	Rotameric	Outliers	Percentiles	
1	A	833/999 (83%)	827 (99%)	6 (1%)	76	92
2	C	151/167 (90%)	150 (99%)	1 (1%)	76	92
All	All	984/1166 (84%)	977 (99%)	7 (1%)	73	92

All (7) residues with a non-rotameric sidechain are listed below:

Mol	Chain	Res	Type
1	A	110	GLU
1	A	121	ILE
1	A	196	VAL
1	A	357	ARG
1	A	881	LEU

Continued on next page...

Continued from previous page...

Mol	Chain	Res	Type
1	A	937	PHE
2	C	69	ASP

Sometimes sidechains can be flipped to improve hydrogen bonding and reduce clashes. All (15) such sidechains are listed below:

Mol	Chain	Res	Type
1	A	189	GLN
1	A	269	GLN
1	A	370	ASN
1	A	384	ASN
1	A	419	HIS
1	A	428	ASN
1	A	597	GLN
1	A	643	GLN
1	A	661	GLN
1	A	760	GLN
1	A	879	GLN
1	A	1042	GLN
1	A	1064	GLN
2	C	61	GLN
2	C	99	GLN

5.3.3 RNA [i](#)

There are no RNA molecules in this entry.

5.4 Non-standard residues in protein, DNA, RNA chains [i](#)

There are no non-standard protein/DNA/RNA residues in this entry.

5.5 Carbohydrates [i](#)

There are no oligosaccharides in this entry.

5.6 Ligand geometry [i](#)

Of 3 ligands modelled in this entry, 1 is monoatomic - leaving 2 for Mogul analysis.

In the following table, the Counts columns list the number of bonds (or angles) for which Mogul statistics could be retrieved, the number of bonds (or angles) that are observed in the model and the number of bonds (or angles) that are defined in the Chemical Component Dictionary. The Link column lists molecule types, if any, to which the group is linked. The Z score for a bond length (or angle) is the number of standard deviations the observed value is removed from the expected value. A bond length (or angle) with $|Z| > 2$ is considered an outlier worth inspection. RMSZ is the root-mean-square of all Z scores of the bond lengths (or angles).

Mol	Type	Chain	Res	Link	Bond lengths			Bond angles		
					Counts	RMSZ	# $ Z > 2$	Counts	RMSZ	# $ Z > 2$
5	GNP	C	202	4	34,34,34	1.97	8 (23%)	47,54,54	1.53	9 (19%)
3	A1AZD	A	1101	-	44,44,44	0.97	3 (6%)	53,61,61	1.14	6 (11%)

In the following table, the Chirals column lists the number of chiral outliers, the number of chiral centers analysed, the number of these observed in the model and the number defined in the Chemical Component Dictionary. Similar counts are reported in the Torsion and Rings columns. '-' means no outliers of that kind were identified.

Mol	Type	Chain	Res	Link	Chirals	Torsions	Rings
5	GNP	C	202	4	-	4/18/38/38	0/3/3/3
3	A1AZD	A	1101	-	-	4/27/27/27	0/4/4/4

All (11) bond length outliers are listed below:

Mol	Chain	Res	Type	Atoms	Z	Observed(Å)	Ideal(Å)
5	C	202	GNP	PA-O3A	-4.35	1.54	1.59
5	C	202	GNP	C5-N7	-4.14	1.30	1.39
5	C	202	GNP	PG-O3G	-3.82	1.46	1.56
5	C	202	GNP	PB-O3A	-3.78	1.54	1.59
5	C	202	GNP	PG-O2G	-3.73	1.46	1.56
5	C	202	GNP	PG-N3B	-3.39	1.54	1.63
5	C	202	GNP	PB-O2B	-3.26	1.48	1.56
5	C	202	GNP	PB-N3B	-2.87	1.55	1.63
3	A	1101	A1AZD	O3-C5	-2.32	1.44	1.48
3	A	1101	A1AZD	C20-C19	-2.26	1.37	1.41
3	A	1101	A1AZD	C20-C15	-2.02	1.40	1.42

All (15) bond angle outliers are listed below:

Mol	Chain	Res	Type	Atoms	Z	Observed(°)	Ideal(°)
5	C	202	GNP	O1B-PB-N3B	-5.02	104.37	111.77
5	C	202	GNP	O2B-PB-O3A	3.99	117.96	104.64
5	C	202	GNP	N9-C4-N3	3.36	132.68	125.95

Continued on next page...

Continued from previous page...

Mol	Chain	Res	Type	Atoms	Z	Observed(°)	Ideal(°)
3	A	1101	A1AZD	C19-S21-C22	-3.22	86.98	91.24
5	C	202	GNP	O2A-PA-O3A	3.07	115.57	107.27
3	A	1101	A1AZD	C20-C19-S21	2.83	115.45	111.64
5	C	202	GNP	C5-C4-N3	-2.74	124.03	128.39
3	A	1101	A1AZD	C19-C18-N17	-2.58	118.28	121.68
5	C	202	GNP	O3A-PB-N3B	-2.57	99.46	106.59
3	A	1101	A1AZD	C12-C11-C10	-2.41	120.96	123.43
5	C	202	GNP	C6-C5-N7	-2.40	125.92	130.29
5	C	202	GNP	O1G-PG-N3B	2.22	115.03	111.77
3	A	1101	A1AZD	C31-O30-C25	2.15	122.87	117.69
3	A	1101	A1AZD	C5-O3-C1	2.03	124.05	120.97
5	C	202	GNP	C4-C5-N7	2.00	113.84	110.67

There are no chirality outliers.

All (8) torsion outliers are listed below:

Mol	Chain	Res	Type	Atoms
5	C	202	GNP	PG-N3B-PB-O1B
5	C	202	GNP	PA-O3A-PB-O2B
3	A	1101	A1AZD	C16-C2-O33-C32
3	A	1101	A1AZD	C19-C18-C24-C25
5	C	202	GNP	O4'-C4'-C5'-O5'
5	C	202	GNP	PA-O3A-PB-O1B
3	A	1101	A1AZD	C7-C3-C4-O6
3	A	1101	A1AZD	N17-C18-C24-C25

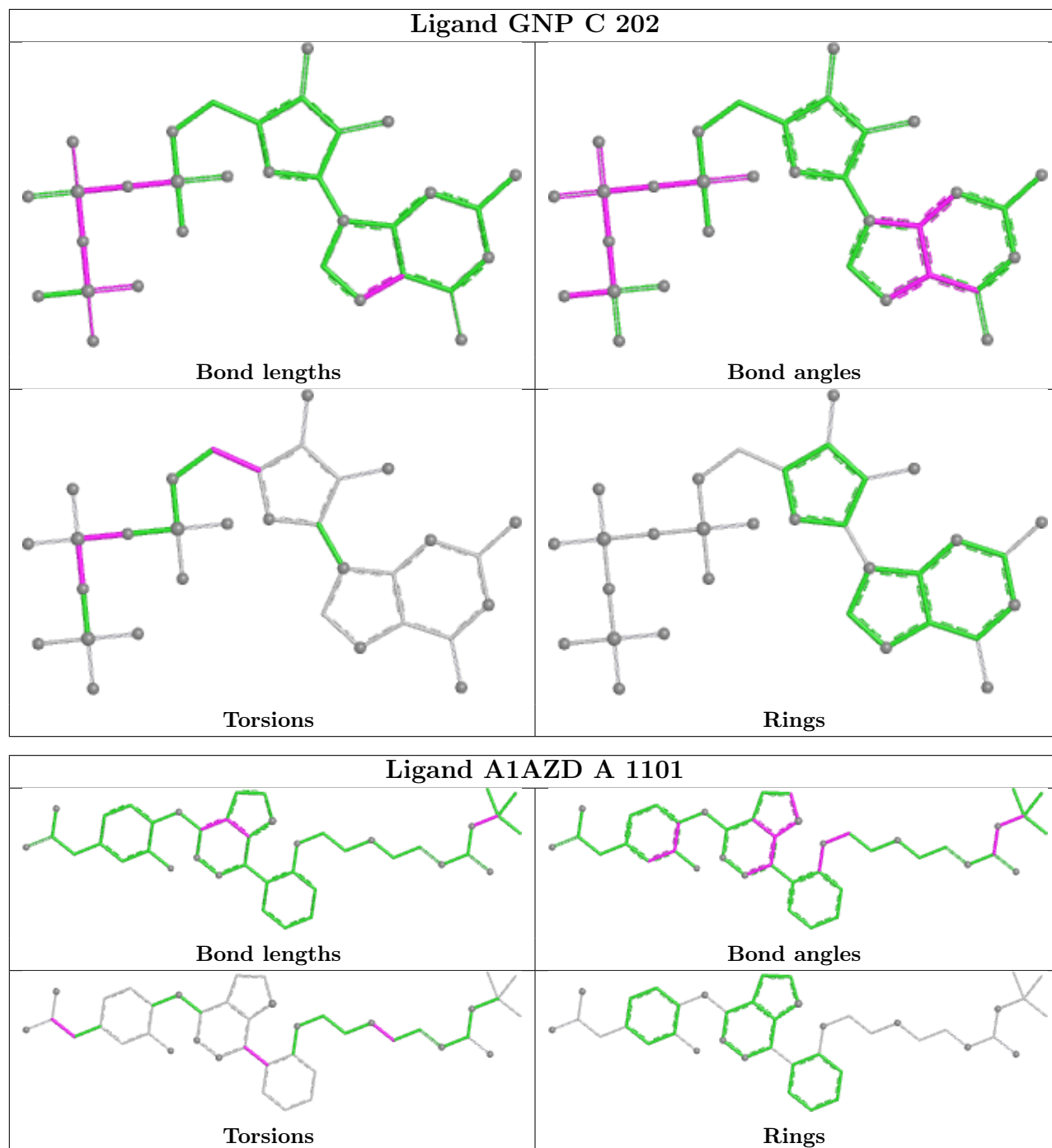
There are no ring outliers.

2 monomers are involved in 2 short contacts:

Mol	Chain	Res	Type	Clashes	Symm-Clashes
5	C	202	GNP	1	0
3	A	1101	A1AZD	1	0

The following is a two-dimensional graphical depiction of Mogul quality analysis of bond lengths, bond angles, torsion angles, and ring geometry for all instances of the Ligand of Interest. In addition, ligands with molecular weight > 250 and outliers as shown on the validation Tables will also be included. For torsion angles, if less than 5% of the Mogul distribution of torsion angles is within 10 degrees of the torsion angle in question, then that torsion angle is considered an outlier. Any bond that is central to one or more torsion angles identified as an outlier by Mogul will be highlighted in the graph. For rings, the root-mean-square deviation (RMSD) between the ring in question and similar rings identified by Mogul is calculated over all ring torsion angles. If the average RMSD is greater than 60 degrees and the minimal RMSD between the ring in question and

any Mogul-identified rings is also greater than 60 degrees, then that ring is considered an outlier. The outliers are highlighted in purple. The color gray indicates Mogul did not find sufficient equivalents in the CSD to analyse the geometry.



5.7 Other polymers ⓘ

There are no such residues in this entry.

5.8 Polymer linkage issues ⓘ

There are no chain breaks in this entry.

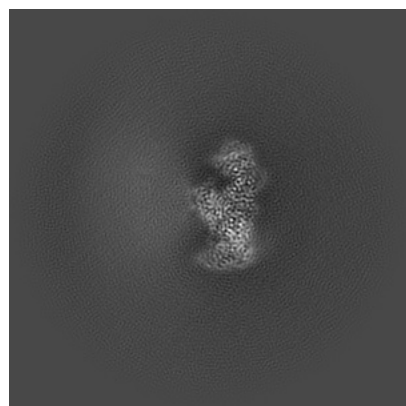
6 Map visualisation [i](#)

This section contains visualisations of the EMDB entry EMD-49453. These allow visual inspection of the internal detail of the map and identification of artifacts.

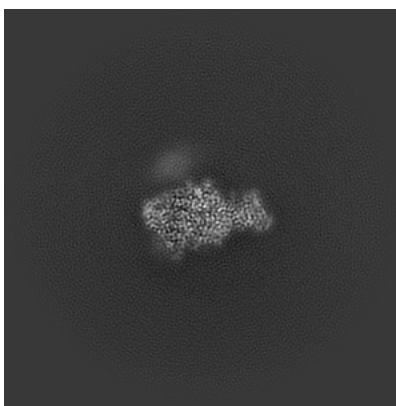
Images derived from a raw map, generated by summing the deposited half-maps, are presented below the corresponding image components of the primary map to allow further visual inspection and comparison with those of the primary map.

6.1 Orthogonal projections [i](#)

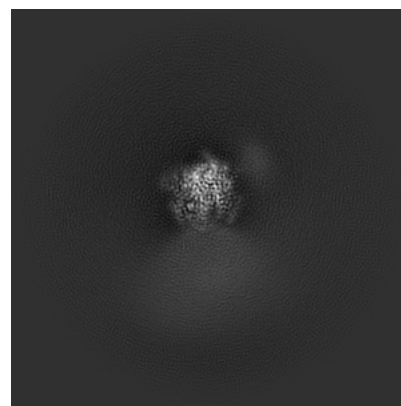
6.1.1 Primary map



X

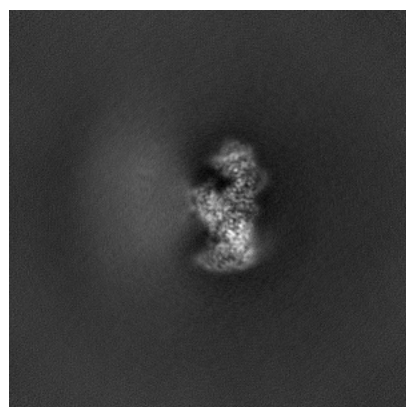


Y

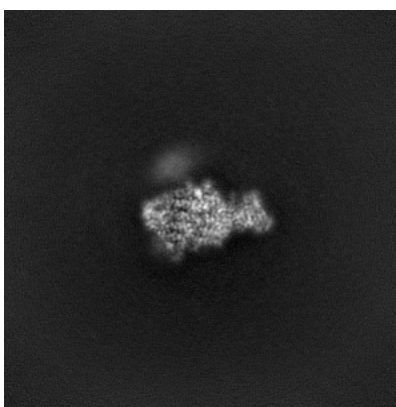


Z

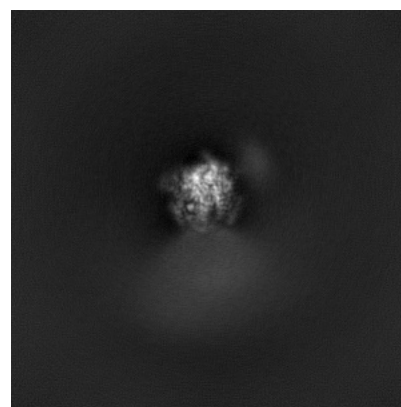
6.1.2 Raw map



X



Y

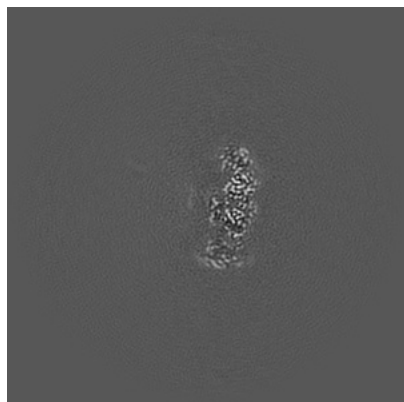


Z

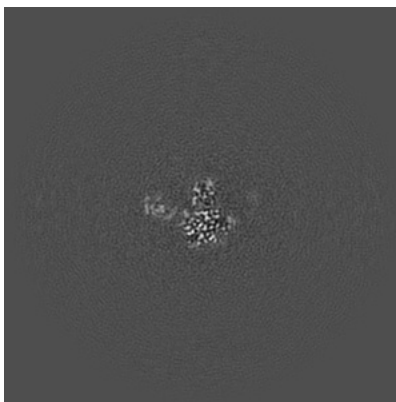
The images above show the map projected in three orthogonal directions.

6.2 Central slices [i](#)

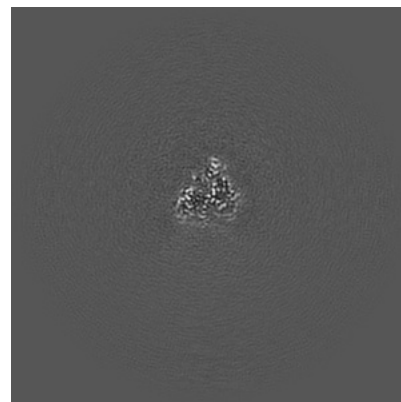
6.2.1 Primary map



X Index: 224

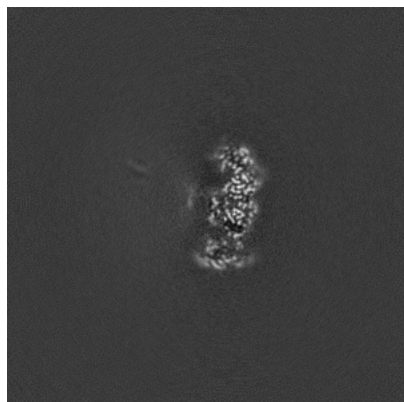


Y Index: 224

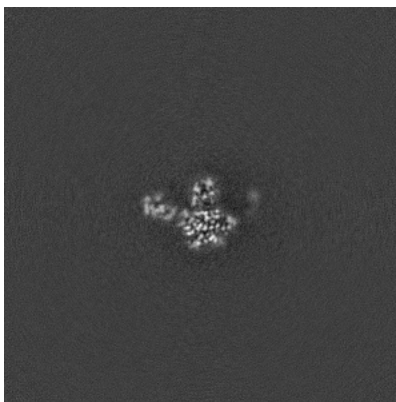


Z Index: 224

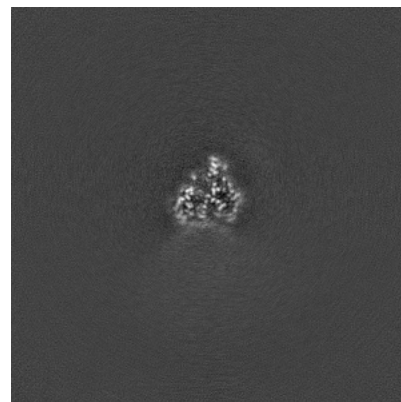
6.2.2 Raw map



X Index: 224



Y Index: 224

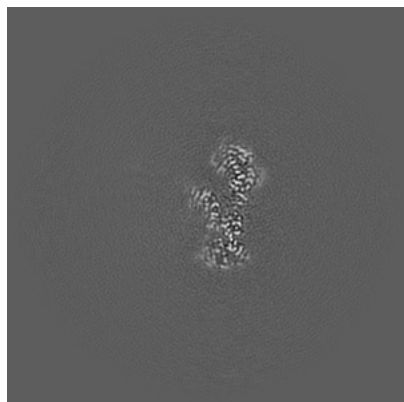


Z Index: 224

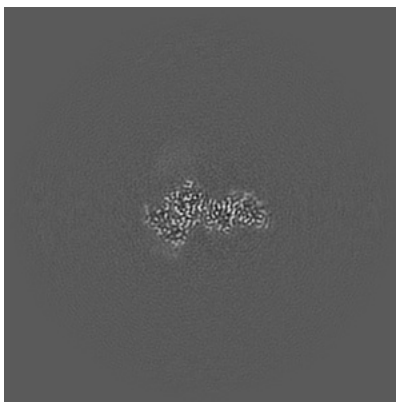
The images above show central slices of the map in three orthogonal directions.

6.3 Largest variance slices [i](#)

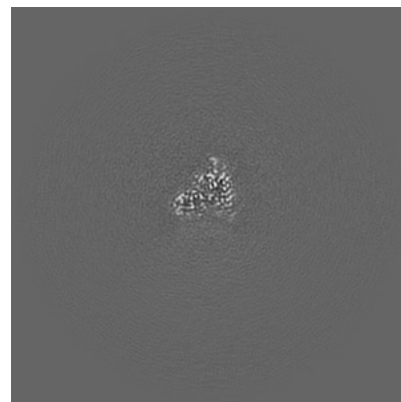
6.3.1 Primary map



X Index: 218

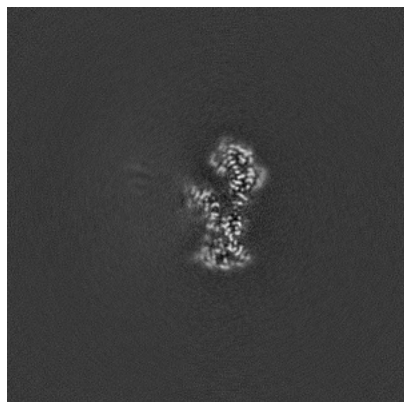


Y Index: 259

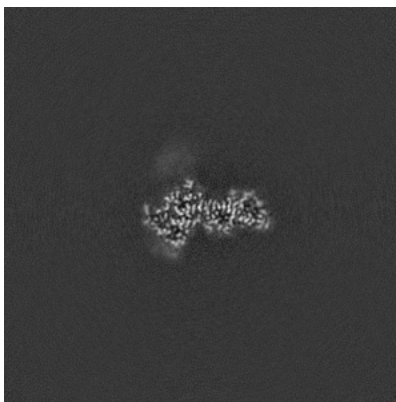


Z Index: 219

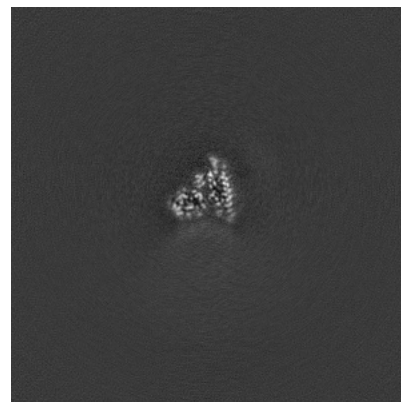
6.3.2 Raw map



X Index: 218



Y Index: 259

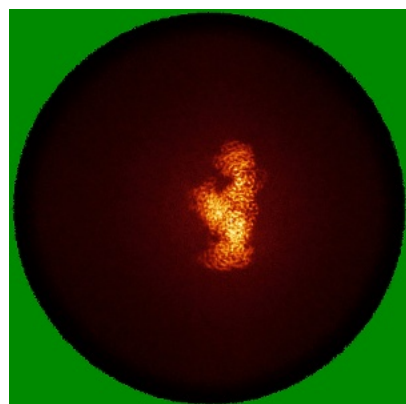


Z Index: 218

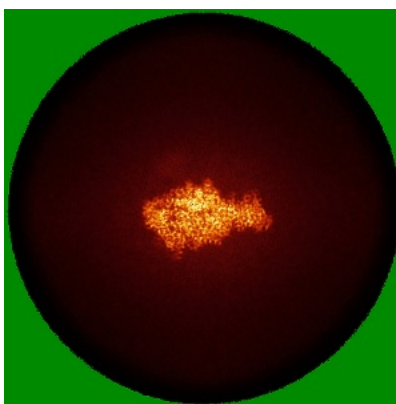
The images above show the largest variance slices of the map in three orthogonal directions.

6.4 Orthogonal standard-deviation projections (False-color) [i](#)

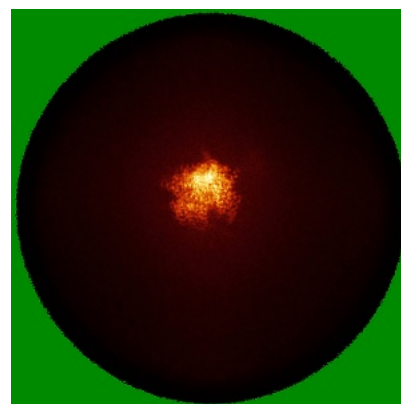
6.4.1 Primary map



X

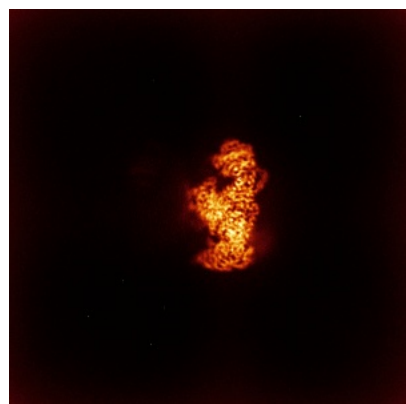


Y

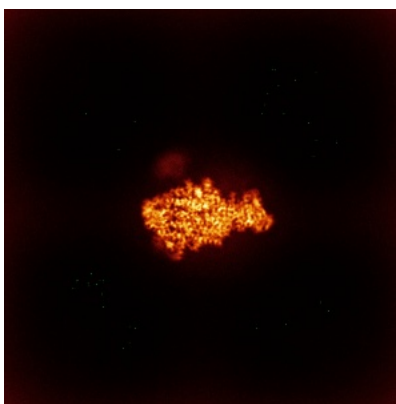


Z

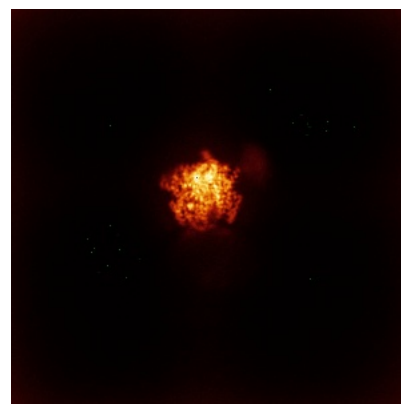
6.4.2 Raw map



X



Y



Z

The images above show the map standard deviation projections with false color in three orthogonal directions. Minimum values are shown in green, max in blue, and dark to light orange shades represent small to large values respectively.

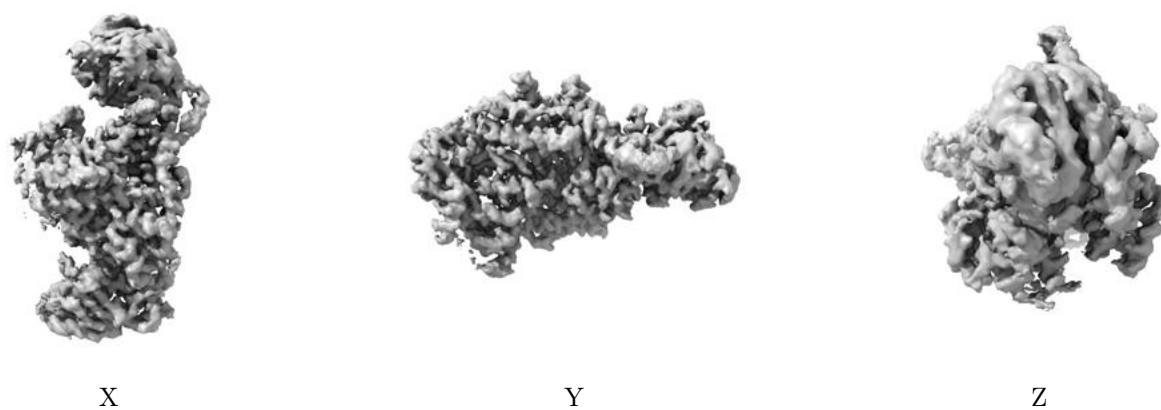
6.5 Orthogonal surface views [i](#)

6.5.1 Primary map



The images above show the 3D surface view of the map at the recommended contour level 0.376. These images, in conjunction with the slice images, may facilitate assessment of whether an appropriate contour level has been provided.

6.5.2 Raw map



These images show the 3D surface of the raw map. The raw map's contour level was selected so that its surface encloses the same volume as the primary map does at its recommended contour level.

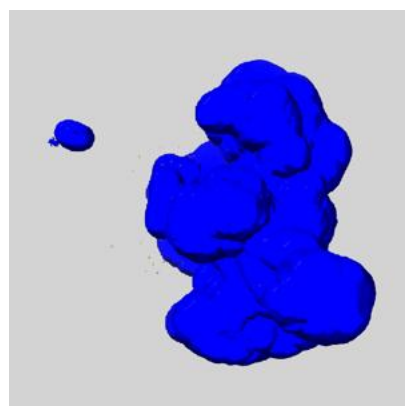
6.6 Mask visualisation [i](#)

This section shows the 3D surface view of the primary map at 50% transparency overlaid with the specified mask at 0% transparency

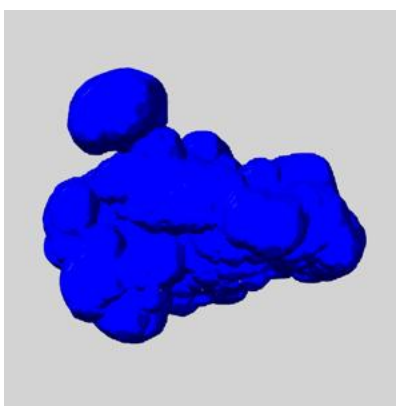
A mask typically either:

- Encompasses the whole structure
- Separates out a domain, a functional unit, a monomer or an area of interest from a larger structure

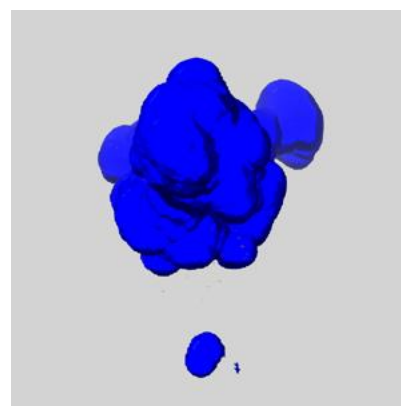
6.6.1 emd_49453_msk_1.map [i](#)



X



Y

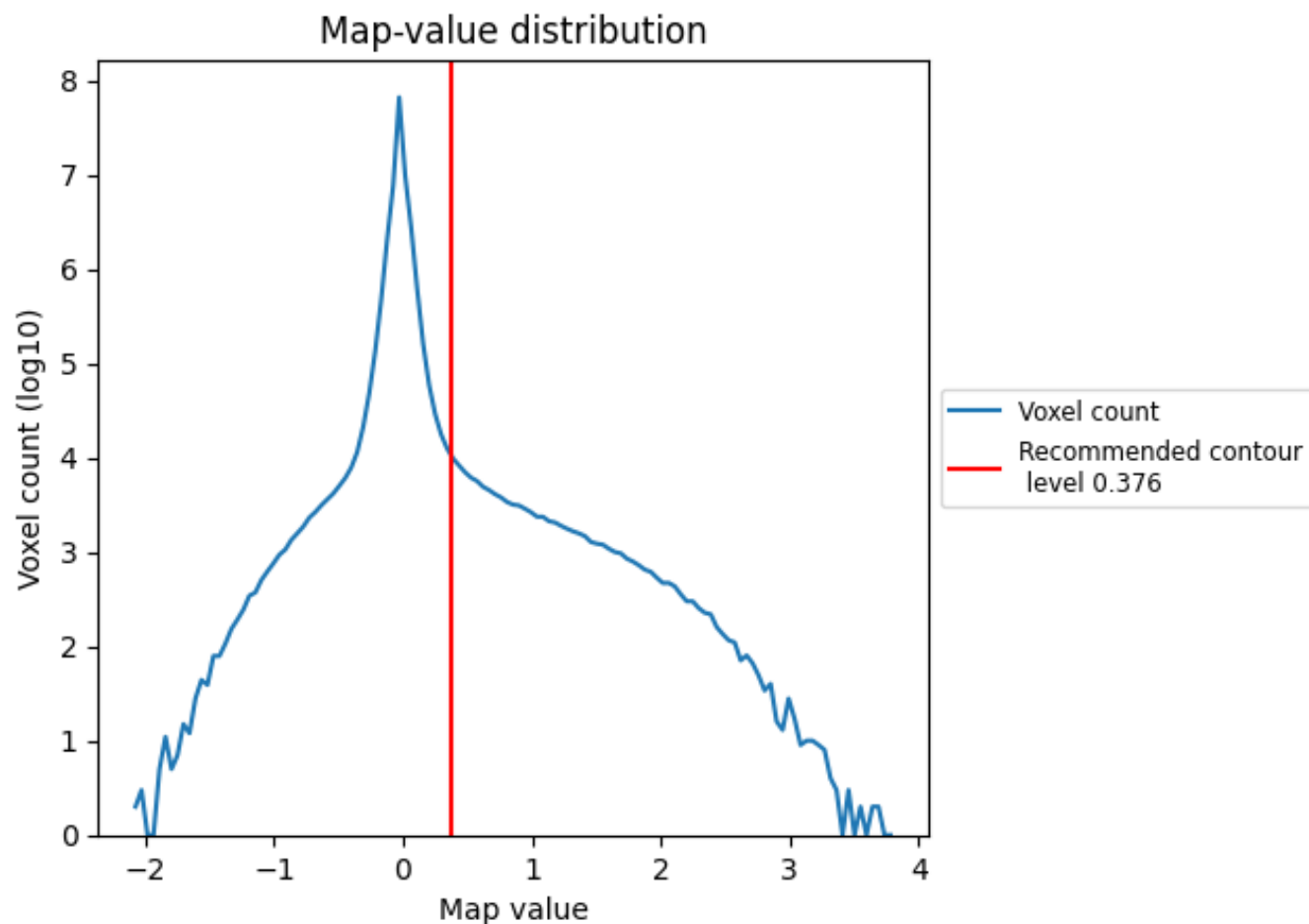


Z

7 Map analysis [i](#)

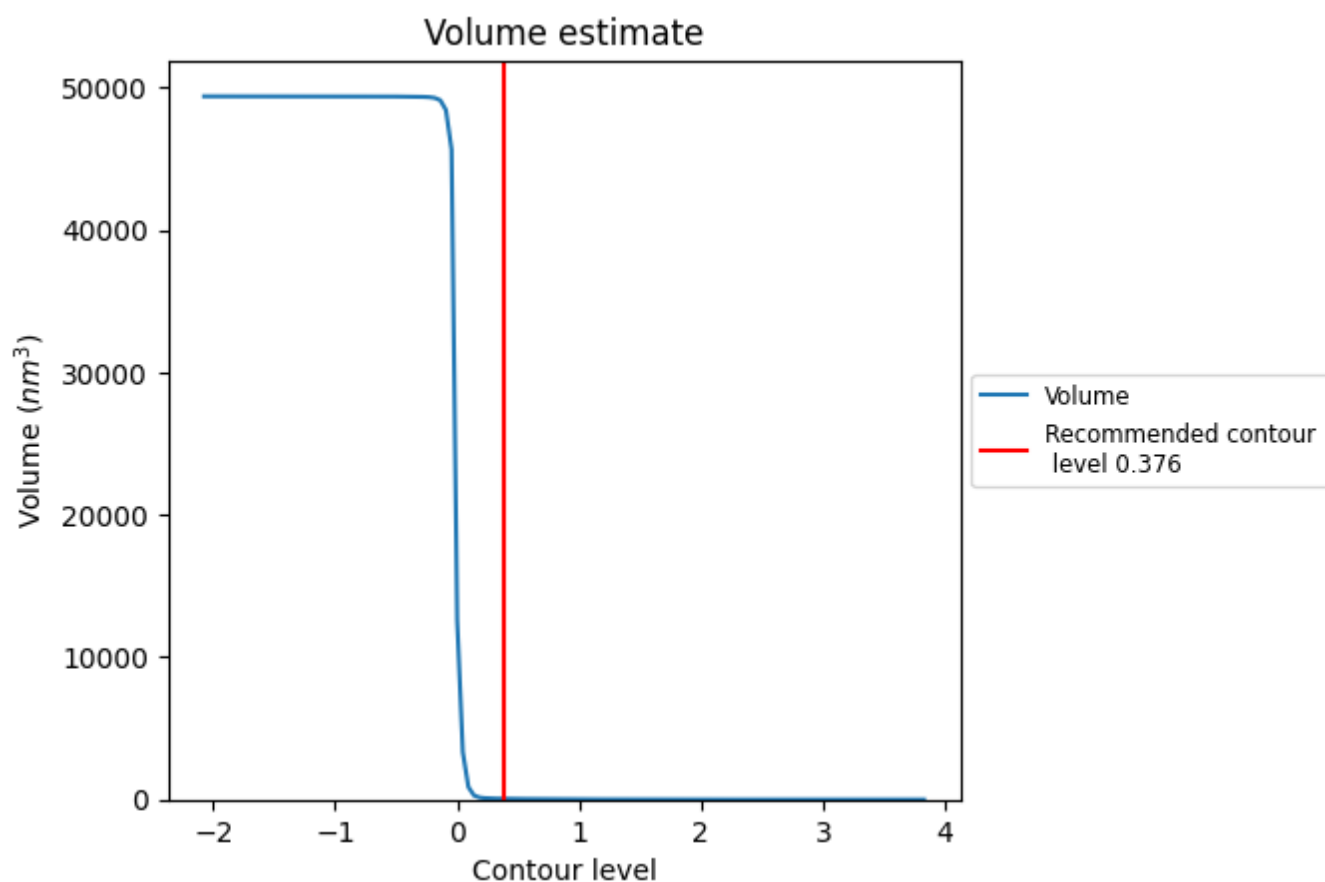
This section contains the results of statistical analysis of the map.

7.1 Map-value distribution [i](#)



The map-value distribution is plotted in 128 intervals along the x-axis. The y-axis is logarithmic. A spike in this graph at zero usually indicates that the volume has been masked.

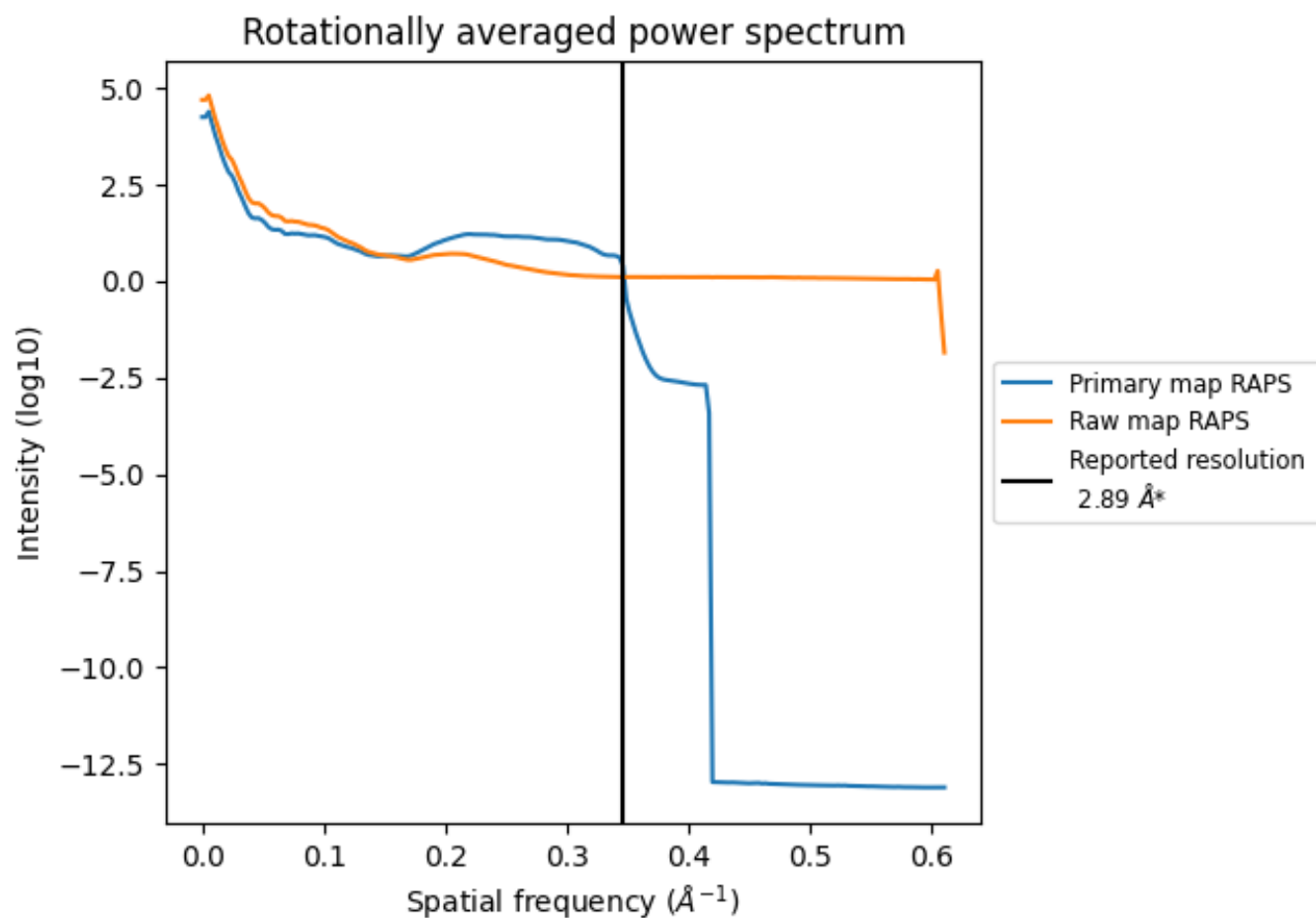
7.2 Volume estimate [i](#)



The volume at the recommended contour level is 58 nm³; this corresponds to an approximate mass of 52 kDa.

The volume estimate graph shows how the enclosed volume varies with the contour level. The recommended contour level is shown as a vertical line and the intersection between the line and the curve gives the volume of the enclosed surface at the given level.

7.3 Rotationally averaged power spectrum ⓘ

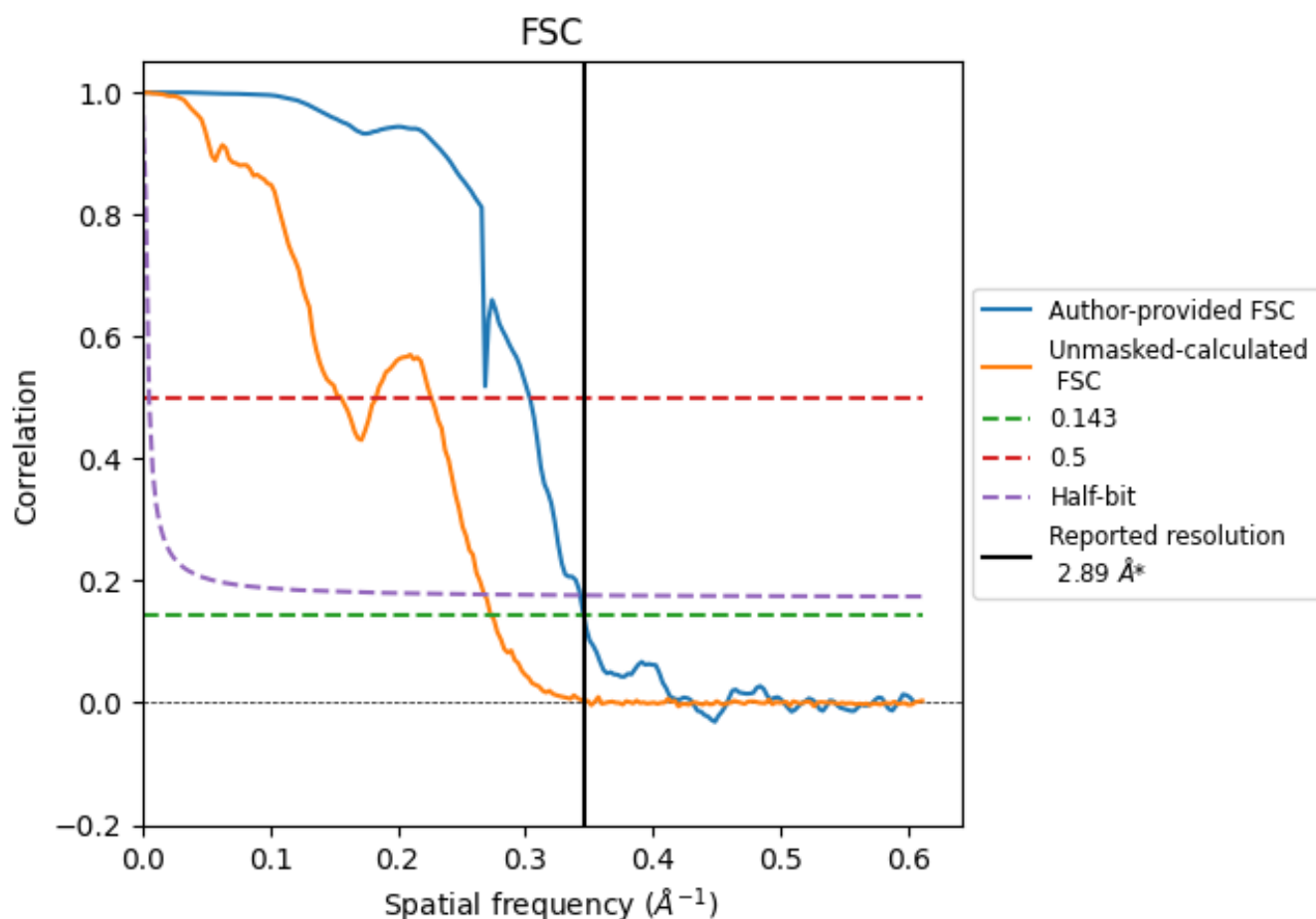


*Reported resolution corresponds to spatial frequency of 0.346 Å⁻¹

8 Fourier-Shell correlation [i](#)

Fourier-Shell Correlation (FSC) is the most commonly used method to estimate the resolution of single-particle and subtomogram-averaged maps. The shape of the curve depends on the imposed symmetry, mask and whether or not the two 3D reconstructions used were processed from a common reference. The reported resolution is shown as a black line. A curve is displayed for the half-bit criterion in addition to lines showing the 0.143 gold standard cut-off and 0.5 cut-off.

8.1 FSC [i](#)



*Reported resolution corresponds to spatial frequency of 0.346 \AA^{-1}

8.2 Resolution estimates [i](#)

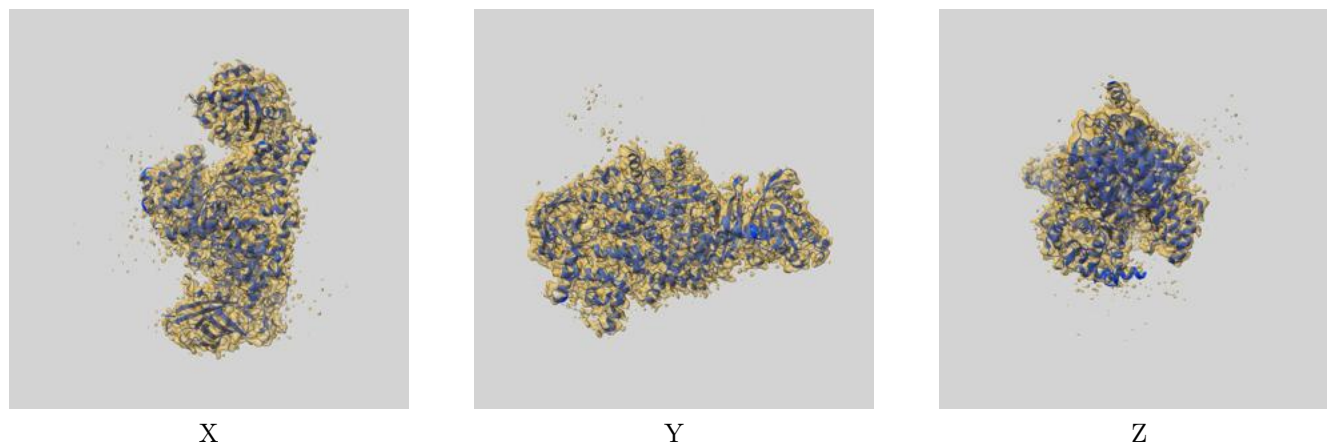
Resolution estimate (Å)	Estimation criterion (FSC cut-off)		
	0.143	0.5	Half-bit
Reported by author	2.89	-	-
Author-provided FSC curve	2.89	3.30	2.92
Unmasked-calculated*	3.66	6.42	3.73

*Resolution estimate based on FSC curve calculated by comparison of deposited half-maps. The value from deposited half-maps intersecting FSC 0.143 CUT-OFF 3.66 differs from the reported value 2.89 by more than 10 %

9 Map-model fit [i](#)

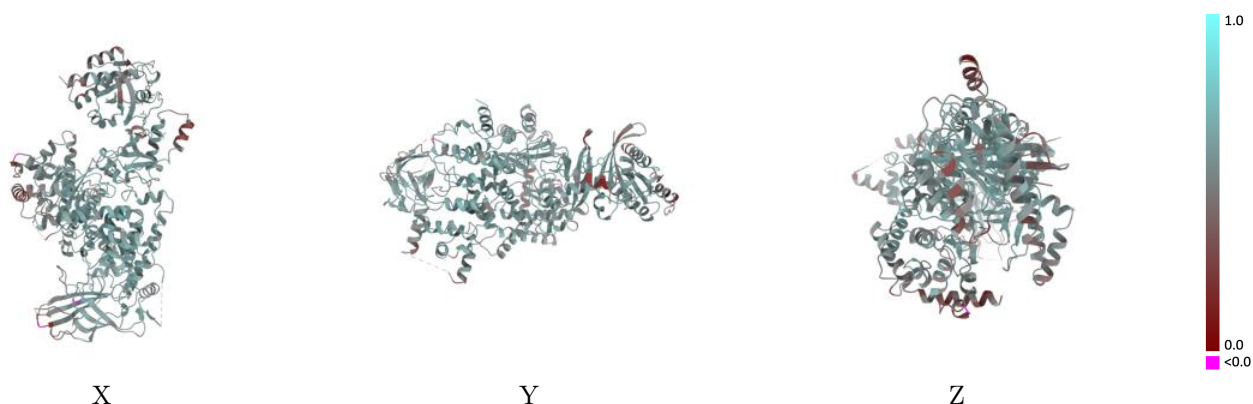
This section contains information regarding the fit between EMDB map EMD-49453 and PDB model 9NI5. Per-residue inclusion information can be found in section 3 on page 6.

9.1 Map-model overlay [i](#)



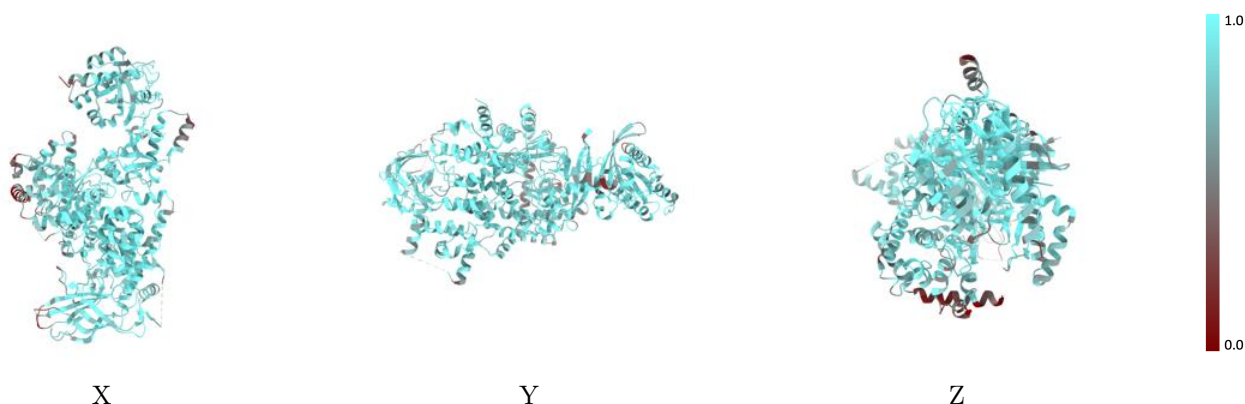
The images above show the 3D surface view of the map at the recommended contour level 0.376 at 50% transparency in yellow overlaid with a ribbon representation of the model coloured in blue. These images allow for the visual assessment of the quality of fit between the atomic model and the map.

9.2 Q-score mapped to coordinate model [i](#)



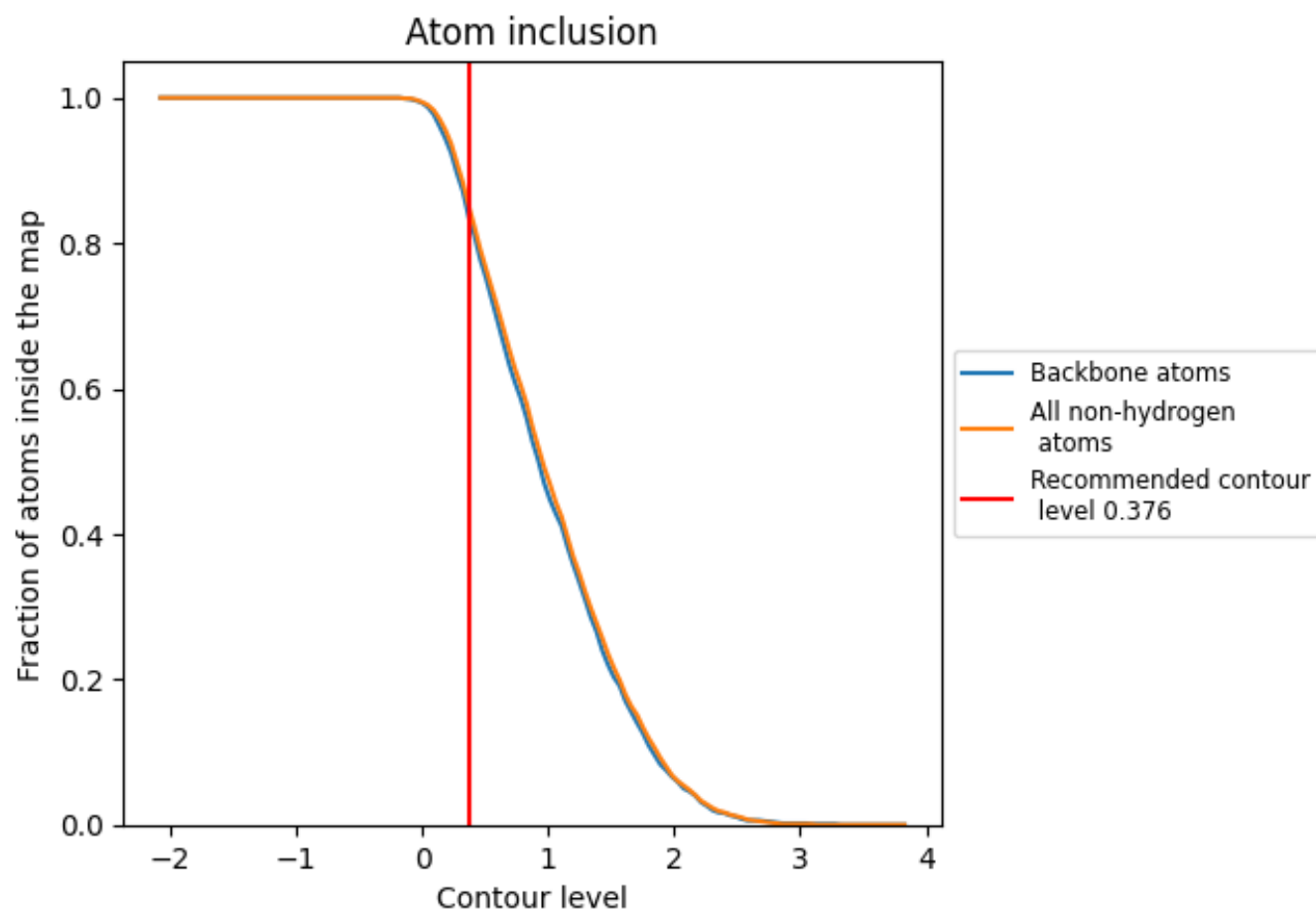
The images above show the model with each residue coloured according to its Q-score. This shows their resolvability in the map with higher Q-score values reflecting better resolvability. Please note: Q-score is calculating the resolvability of atoms, and thus high values are only expected at resolutions at which atoms can be resolved. Low Q-score values may therefore be expected for many entries.

9.3 Atom inclusion mapped to coordinate model [i](#)



The images above show the model with each residue coloured according to its atom inclusion. This shows to what extent they are inside the map at the recommended contour level (0.376).

9.4 Atom inclusion [i](#)



At the recommended contour level, 83% of all backbone atoms, 85% of all non-hydrogen atoms, are inside the map.

9.5 Map-model fit summary ⓘ

The table lists the average atom inclusion at the recommended contour level (0.376) and Q-score for the entire model and for each chain.

Chain	Atom inclusion	Q-score
All	<div><div></div></div> 0.8480	<div><div></div></div> 0.5520
A	<div><div></div></div> 0.8550	<div><div></div></div> 0.5540
C	<div><div></div></div> 0.8500	<div><div></div></div> 0.5360

