



# Full wwPDB X-ray Structure Validation Report ⓘ

Feb 15, 2024 – 06:03 AM EST

PDB ID : 3NFR  
Title : Casimiroin analog inhibitor of quinone reductase 2  
Authors : Sturdy, M.; Mesecar, A.D.; Jermihov, K.; Cushman, M.; Maiti, A.  
Deposited on : 2010-06-10  
Resolution : 1.57 Å(reported)

This is a Full wwPDB X-ray Structure Validation Report for a publicly released PDB entry.

We welcome your comments at [validation@mail.wwpdb.org](mailto:validation@mail.wwpdb.org)

A user guide is available at

<https://www.wwpdb.org/validation/2017/XrayValidationReportHelp>

with specific help available everywhere you see the ⓘ symbol.

The types of validation reports are described at

<http://www.wwpdb.org/validation/2017/FAQs#types>.

---

The following versions of software and data (see [references ⓘ](#)) were used in the production of this report:

MolProbity : 4.02b-467  
Mogul : 1.8.5 (274361), CSD as541be (2020)  
Xtriage (Phenix) : 1.13  
EDS : 2.36  
buster-report : 1.1.7 (2018)  
Percentile statistics : 20191225.v01 (using entries in the PDB archive December 25th 2019)  
Refmac : 5.8.0158  
CCP4 : 7.0.044 (Gargrove)  
Ideal geometry (proteins) : Engh & Huber (2001)  
Ideal geometry (DNA, RNA) : Parkinson et al. (1996)  
Validation Pipeline (wwPDB-VP) : 2.36

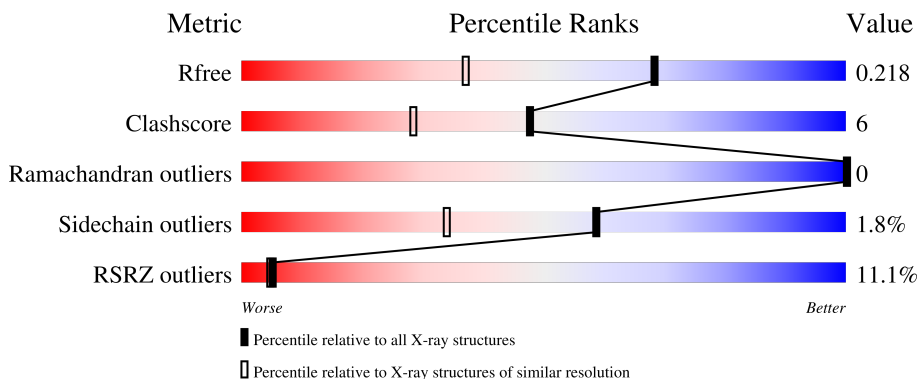
# 1 Overall quality at a glance

The following experimental techniques were used to determine the structure:

*X-RAY DIFFRACTION*

The reported resolution of this entry is 1.57 Å.

Percentile scores (ranging between 0-100) for global validation metrics of the entry are shown in the following graphic. The table shows the number of entries on which the scores are based.



Metric	Whole archive (#Entries)	Similar resolution (#Entries, resolution range(Å))
$R_{free}$	130704	5534 (1.60-1.56)
Clashscore	141614	5861 (1.60-1.56)
Ramachandran outliers	138981	5708 (1.60-1.56)
Sidechain outliers	138945	5703 (1.60-1.56)
RSRZ outliers	127900	5431 (1.60-1.56)

The table below summarises the geometric issues observed across the polymeric chains and their fit to the electron density. The red, orange, yellow and green segments of the lower bar indicate the fraction of residues that contain outliers for  $\geq 3$ , 2, 1 and 0 types of geometric quality criteria respectively. A grey segment represents the fraction of residues that are not modelled. The numeric value for each fraction is indicated below the corresponding segment, with a dot representing fractions  $\leq 5\%$ . The upper red bar (where present) indicates the fraction of residues that have poor fit to the electron density. The numeric value is given above the bar.

Mol	Chain	Length	Quality of chain
1	A	230	
1	B	230	

## 2 Entry composition [i](#)

There are 5 unique types of molecules in this entry. The entry contains 4086 atoms, of which 0 are hydrogens and 0 are deuteriums.

In the tables below, the ZeroOcc column contains the number of atoms modelled with zero occupancy, the AltConf column contains the number of residues with at least one atom in alternate conformation and the Trace column contains the number of residues modelled with at most 2 atoms.

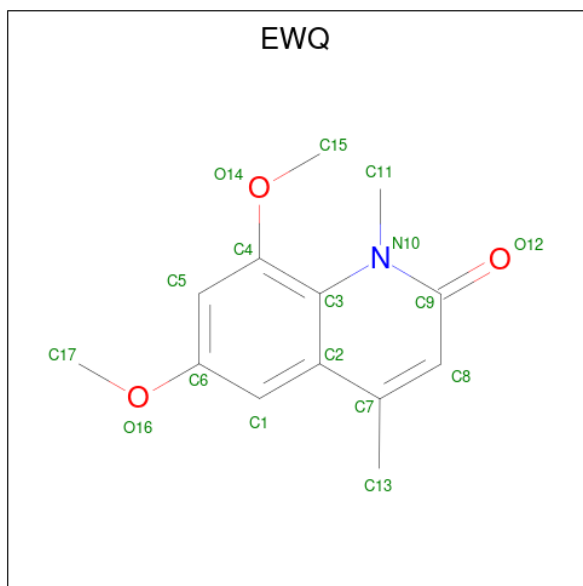
- Molecule 1 is a protein called Ribosyldihyronicotinamide dehydrogenase [quinone].

Mol	Chain	Residues	Atoms					ZeroOcc	AltConf	Trace
			Total	C	N	O	S			
1	A	230	Total 1824	C 1174	N 304	O 338	S 8	0	0	0
1	B	230	Total 1824	C 1174	N 304	O 338	S 8	0	0	0

- Molecule 2 is ZINC ION (three-letter code: ZN) (formula: Zn).

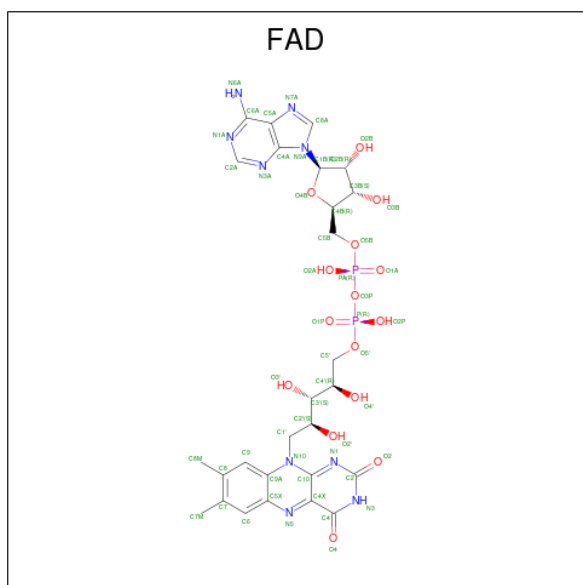
Mol	Chain	Residues	Atoms		ZeroOcc	AltConf
			Total	Zn		
2	A	1	Total 1	Zn 1	0	0
2	B	1	Total 1	Zn 1	0	0

- Molecule 3 is 6,8-dimethoxy-1,4-dimethylquinolin-2(1H)-one (three-letter code: EWQ) (formula: C<sub>13</sub>H<sub>15</sub>NO<sub>3</sub>).



Mol	Chain	Residues	Atoms				ZeroOcc	AltConf
3	A	1	Total	C	N	O	0	0
			17	13	1	3		
3	B	1	Total	C	N	O	0	0
			17	13	1	3		

- Molecule 4 is FLAVIN-ADENINE DINUCLEOTIDE (three-letter code: FAD) (formula:  $C_{27}H_{33}N_9O_{15}P_2$ ).



Mol	Chain	Residues	Atoms					ZeroOcc	AltConf
4	A	1	Total	C	N	O	P	0	0
			53	27	9	15	2		
4	B	1	Total	C	N	O	P	0	0
			53	27	9	15	2		

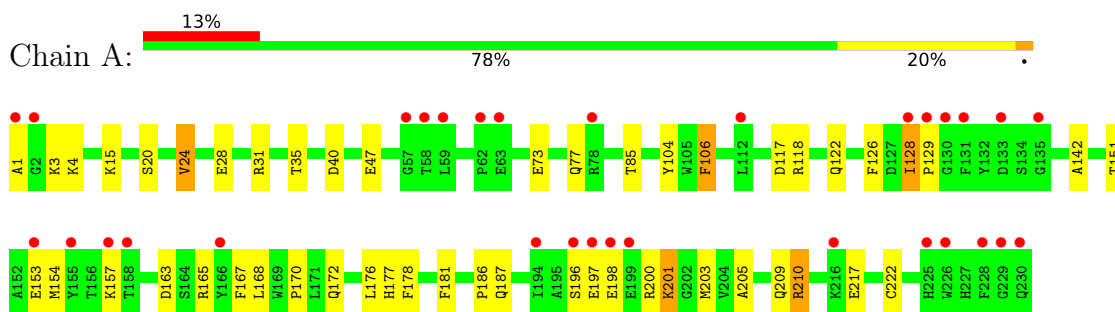
- Molecule 5 is water.

Mol	Chain	Residues	Atoms		ZeroOcc	AltConf
5	A	120	Total	O	0	0
			120	120		
5	B	176	Total	O	0	0
			176	176		

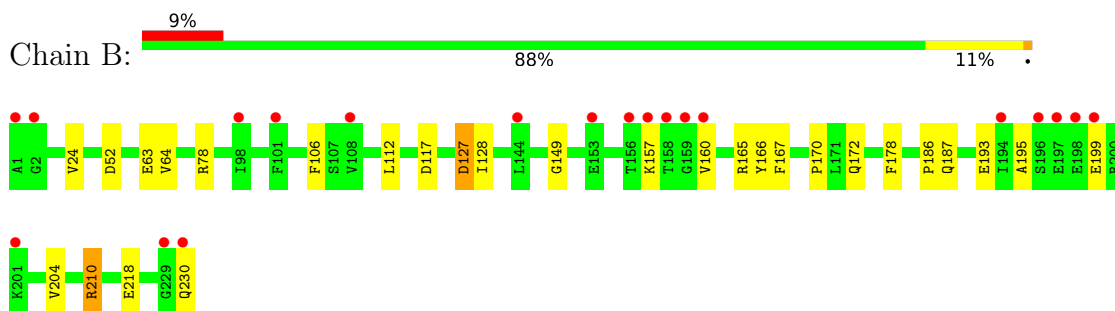
### 3 Residue-property plots [i](#)

These plots are drawn for all protein, RNA, DNA and oligosaccharide chains in the entry. The first graphic for a chain summarises the proportions of the various outlier classes displayed in the second graphic. The second graphic shows the sequence view annotated by issues in geometry and electron density. Residues are color-coded according to the number of geometric quality criteria for which they contain at least one outlier: green = 0, yellow = 1, orange = 2 and red = 3 or more. A red dot above a residue indicates a poor fit to the electron density ( $RSRZ > 2$ ). Stretches of 2 or more consecutive residues without any outlier are shown as a green connector. Residues present in the sample, but not in the model, are shown in grey.

- Molecule 1: Ribosyldihyronicotinamide dehydrogenase [quinone]



- Molecule 1: Ribosyldihyronicotinamide dehydrogenase [quinone]



## 4 Data and refinement statistics

Property	Value	Source
Space group	P 21 21 21	Depositor
Cell constants a, b, c, $\alpha$ , $\beta$ , $\gamma$	56.06Å 83.21Å 106.47Å 90.00° 90.00° 90.00°	Depositor
Resolution (Å)	65.56 – 1.57 29.98 – 1.57	Depositor EDS
% Data completeness (in resolution range)	90.7 (65.56-1.57) 90.7 (29.98-1.57)	Depositor EDS
$R_{merge}$	(Not available)	Depositor
$R_{sym}$	(Not available)	Depositor
$\langle I/\sigma(I) \rangle$ <sup>1</sup>	4.15 (at 1.57Å)	Xtrriage
Refinement program	REFMAC 5.5.0102	Depositor
R, $R_{free}$	0.194 , 0.219 0.194 , 0.218	Depositor DCC
$R_{free}$ test set	3228 reflections (5.06%)	wwPDB-VP
Wilson B-factor (Å <sup>2</sup> )	18.4	Xtrriage
Anisotropy	0.075	Xtrriage
Bulk solvent $k_{sol}$ (e/Å <sup>3</sup> ), $B_{sol}$ (Å <sup>2</sup> )	0.37 , 44.4	EDS
L-test for twinning <sup>2</sup>	$\langle  L  \rangle = 0.50$ , $\langle L^2 \rangle = 0.34$	Xtrriage
Estimated twinning fraction	No twinning to report.	Xtrriage
$F_o, F_c$ correlation	0.96	EDS
Total number of atoms	4086	wwPDB-VP
Average B, all atoms (Å <sup>2</sup> )	24.0	wwPDB-VP

Xtrriage's analysis on translational NCS is as follows: *The largest off-origin peak in the Patterson function is 5.29% of the height of the origin peak. No significant pseudotranslation is detected.*

<sup>1</sup>Intensities estimated from amplitudes.

<sup>2</sup>Theoretical values of  $\langle |L| \rangle$ ,  $\langle L^2 \rangle$  for acentric reflections are 0.5, 0.333 respectively for untwinned datasets, and 0.375, 0.2 for perfectly twinned datasets.

## 5 Model quality [i](#)

### 5.1 Standard geometry [i](#)

Bond lengths and bond angles in the following residue types are not validated in this section: ZN, EWQ, FAD

The Z score for a bond length (or angle) is the number of standard deviations the observed value is removed from the expected value. A bond length (or angle) with  $|Z| > 5$  is considered an outlier worth inspection. RMSZ is the root-mean-square of all Z scores of the bond lengths (or angles).

Mol	Chain	Bond lengths		Bond angles	
		RMSZ	# Z  >5	RMSZ	# Z  >5
1	A	1.35	5/1874 (0.3%)	1.20	13/2542 (0.5%)
1	B	1.32	2/1874 (0.1%)	1.21	12/2542 (0.5%)
All	All	1.34	7/3748 (0.2%)	1.21	25/5084 (0.5%)

All (7) bond length outliers are listed below:

Mol	Chain	Res	Type	Atoms	Z	Observed(Å)	Ideal(Å)
1	A	217	GLU	CB-CG	-6.82	1.39	1.52
1	A	178	PHE	CE2-CZ	6.80	1.50	1.37
1	A	24	VAL	CB-CG2	-5.91	1.40	1.52
1	A	176	LEU	N-CA	5.47	1.57	1.46
1	A	106	PHE	CD1-CE1	5.46	1.50	1.39
1	B	64	VAL	CB-CG2	5.13	1.63	1.52
1	B	106	PHE	CD1-CE1	5.01	1.49	1.39

All (25) bond angle outliers are listed below:

Mol	Chain	Res	Type	Atoms	Z	Observed(°)	Ideal(°)
1	B	52	ASP	CB-CG-OD1	9.98	127.28	118.30
1	A	210	ARG	NE-CZ-NH1	-9.30	115.65	120.30
1	B	78	ARG	NE-CZ-NH2	-8.43	116.08	120.30
1	B	117	ASP	CB-CG-OD2	-7.21	111.81	118.30
1	A	47	GLU	OE1-CD-OE2	-6.88	115.05	123.30
1	B	78	ARG	NE-CZ-NH1	6.60	123.60	120.30
1	A	117	ASP	CB-CG-OD1	6.41	124.07	118.30
1	A	118	ARG	NE-CZ-NH1	6.19	123.40	120.30
1	A	40	ASP	CB-CG-OD1	6.04	123.73	118.30
1	B	112	LEU	CB-CG-CD2	-6.00	100.80	111.00
1	B	106	PHE	CB-CG-CD2	-5.89	116.68	120.80
1	B	165	ARG	NE-CZ-NH2	-5.68	117.46	120.30

*Continued on next page...*

Continued from previous page...

Mol	Chain	Res	Type	Atoms	Z	Observed(°)	Ideal(°)
1	A	24	VAL	CG1-CB-CG2	5.49	119.68	110.90
1	B	178	PHE	CB-CG-CD2	5.45	124.62	120.80
1	A	31	ARG	NE-CZ-NH1	-5.42	117.59	120.30
1	B	127	ASP	CB-CG-OD2	-5.39	113.45	118.30
1	B	210	ARG	NE-CZ-NH2	5.33	122.96	120.30
1	A	117	ASP	CB-CG-OD2	-5.29	113.54	118.30
1	A	118	ARG	NE-CZ-NH2	-5.26	117.67	120.30
1	A	128	ILE	CB-CA-C	5.25	122.11	111.60
1	B	218	GLU	CB-CA-C	-5.19	100.03	110.40
1	A	106	PHE	CB-CG-CD2	-5.02	117.28	120.80
1	B	167	PHE	CB-CG-CD1	5.02	124.32	120.80
1	A	28	GLU	OE1-CD-OE2	5.02	129.32	123.30
1	A	203	MET	CG-SD-CE	-5.02	92.17	100.20

There are no chirality outliers.

There are no planarity outliers.

## 5.2 Too-close contacts [i](#)

In the following table, the Non-H and H(model) columns list the number of non-hydrogen atoms and hydrogen atoms in the chain respectively. The H(added) column lists the number of hydrogen atoms added and optimized by MolProbity. The Clashes column lists the number of clashes within the asymmetric unit, whereas Symm-Clashes lists symmetry-related clashes.

Mol	Chain	Non-H	H(model)	H(added)	Clashes	Symm-Clashes
1	A	1824	0	1779	28	0
1	B	1824	0	1779	12	0
2	A	1	0	0	0	0
2	B	1	0	0	0	0
3	A	17	0	15	2	0
3	B	17	0	15	4	0
4	A	53	0	31	10	0
4	B	53	0	31	0	0
5	A	120	0	0	2	0
5	B	176	0	0	4	0
All	All	4086	0	3650	45	0

The all-atom clashscore is defined as the number of clashes found per 1000 atoms (including hydrogen atoms). The all-atom clashscore for this structure is 6.

All (45) close contacts within the same asymmetric unit are listed below, sorted by their clash magnitude.



Atom-1	Atom-2	Interatomic distance (Å)	Clash overlap (Å)
1:A:200:ARG:HD2	4:A:233:FAD:N3A	2.04	0.73
1:A:200:ARG:NH1	4:A:233:FAD:N3A	2.39	0.69
1:A:205:ALA:O	1:A:209:GLN:HG3	1.93	0.69
1:A:200:ARG:HB3	4:A:233:FAD:C2A	2.28	0.64
1:A:172:GLN:HE22	1:A:186:PRO:HD3	1.64	0.63
3:A:232:EWQ:O14	3:A:232:EWQ:C11	2.48	0.62
1:B:24:VAL:HG11	1:B:204:VAL:CG1	2.31	0.60
1:A:200:ARG:HH11	4:A:233:FAD:C2A	2.15	0.60
3:B:231:EWQ:O14	3:B:231:EWQ:C11	2.48	0.60
1:B:187:GLN:HE21	1:B:210:ARG:HH11	1.50	0.59
1:A:196:SER:O	1:A:198:GLU:O	2.20	0.59
1:A:157:LYS:HG2	1:A:163:ASP:HB2	1.86	0.58
1:A:165:ARG:HA	1:A:168:LEU:HD12	1.87	0.56
1:A:198:GLU:O	1:A:200:ARG:N	2.38	0.55
1:A:85:THR:HG21	5:A:288:HOH:O	2.07	0.53
4:A:233:FAD:HM72	5:B:385:HOH:O	2.11	0.50
4:A:233:FAD:HM81	5:B:278:HOH:O	2.10	0.50
1:B:24:VAL:HG13	5:B:328:HOH:O	2.12	0.49
1:A:200:ARG:HB3	4:A:233:FAD:H2A	1.94	0.49
1:A:187:GLN:HE21	1:A:210:ARG:HH11	1.59	0.49
1:A:4:LYS:HG2	1:A:35:THR:HB	1.94	0.48
1:A:24:VAL:HG13	5:A:350:HOH:O	2.16	0.46
3:B:231:EWQ:O14	3:B:231:EWQ:H11B	2.15	0.46
1:A:128:ILE:HA	1:A:129:PRO:HA	1.75	0.46
1:B:157:LYS:HG3	1:B:166:TYR:OH	2.16	0.45
1:A:1:ALA:HA	1:A:3:LYS:H	1.81	0.45
1:B:187:GLN:NE2	1:B:210:ARG:HH11	2.15	0.45
1:A:142:ALA:HB2	1:A:181:PHE:CD1	2.52	0.44
1:A:73:GLU:O	1:A:77:GLN:HG2	2.17	0.44
3:B:231:EWQ:H17B	3:B:231:EWQ:H1	1.62	0.44
1:A:106:PHE:HB3	1:B:170:PRO:HB3	2.00	0.43
1:B:24:VAL:HG11	1:B:204:VAL:HG12	2.00	0.43
1:A:201:LYS:HD3	4:A:233:FAD:N1A	2.34	0.43
1:A:151:THR:OG1	1:A:154:MET:HG3	2.18	0.42
1:B:193:GLU:HB2	5:B:398:HOH:O	2.18	0.42
1:B:149:GLY:C	3:B:231:EWQ:H11B	2.40	0.42
1:A:177:HIS:ND1	1:A:222:CYS:HB3	2.35	0.42
1:A:20:SER:OG	4:A:233:FAD:N7A	2.45	0.41
1:A:104:TYR:HA	4:A:233:FAD:C5X	2.49	0.41
1:B:172:GLN:HE22	1:B:186:PRO:HD3	1.85	0.41
1:A:15:LYS:NZ	1:B:63:GLU:HG2	2.36	0.41
1:B:195:ALA:HB1	1:B:199:GLU:HB2	2.03	0.41

*Continued on next page...*

Continued from previous page...

Atom-1	Atom-2	Interatomic distance (Å)	Clash overlap (Å)
1:A:122:GLN:HB2	1:A:126:PHE:CZ	2.56	0.40
1:A:167:PHE:O	1:A:170:PRO:HD2	2.21	0.40
3:A:232:EWQ:O14	3:A:232:EWQ:H11B	2.18	0.40

There are no symmetry-related clashes.

## 5.3 Torsion angles [i](#)

### 5.3.1 Protein backbone [i](#)

In the following table, the Percentiles column shows the percent Ramachandran outliers of the chain as a percentile score with respect to all X-ray entries followed by that with respect to entries of similar resolution.

The Analysed column shows the number of residues for which the backbone conformation was analysed, and the total number of residues.

Mol	Chain	Analysed	Favoured	Allowed	Outliers	Percentiles	
1	A	228/230 (99%)	215 (94%)	13 (6%)	0	100	100
1	B	228/230 (99%)	221 (97%)	7 (3%)	0	100	100
All	All	456/460 (99%)	436 (96%)	20 (4%)	0	100	100

There are no Ramachandran outliers to report.

### 5.3.2 Protein sidechains [i](#)

In the following table, the Percentiles column shows the percent sidechain outliers of the chain as a percentile score with respect to all X-ray entries followed by that with respect to entries of similar resolution.

The Analysed column shows the number of residues for which the sidechain conformation was analysed, and the total number of residues.

Mol	Chain	Analysed	Rotameric	Outliers	Percentiles	
1	A	194/194 (100%)	191 (98%)	3 (2%)	65	42
1	B	194/194 (100%)	190 (98%)	4 (2%)	53	27
All	All	388/388 (100%)	381 (98%)	7 (2%)	59	34

All (7) residues with a non-rotameric sidechain are listed below:

Mol	Chain	Res	Type
1	A	153	GLU
1	A	197	GLU
1	A	201	LYS
1	B	127	ASP
1	B	128	ILE
1	B	160	VAL
1	B	230	GLN

Sometimes sidechains can be flipped to improve hydrogen bonding and reduce clashes. All (6) such sidechains are listed below:

Mol	Chain	Res	Type
1	A	45	ASN
1	A	172	GLN
1	A	187	GLN
1	A	212	GLN
1	B	172	GLN
1	B	187	GLN

### 5.3.3 RNA [i](#)

There are no RNA molecules in this entry.

## 5.4 Non-standard residues in protein, DNA, RNA chains [i](#)

There are no non-standard protein/DNA/RNA residues in this entry.

## 5.5 Carbohydrates [i](#)

There are no monosaccharides in this entry.

## 5.6 Ligand geometry [i](#)

Of 6 ligands modelled in this entry, 2 are monoatomic - leaving 4 for Mogul analysis.

In the following table, the Counts columns list the number of bonds (or angles) for which Mogul statistics could be retrieved, the number of bonds (or angles) that are observed in the model and the number of bonds (or angles) that are defined in the Chemical Component Dictionary. The Link column lists molecule types, if any, to which the group is linked. The Z score for a bond length (or angle) is the number of standard deviations the observed value is removed from the

expected value. A bond length (or angle) with  $|Z| > 2$  is considered an outlier worth inspection. RMSZ is the root-mean-square of all Z scores of the bond lengths (or angles).

Mol	Type	Chain	Res	Link	Bond lengths			Bond angles		
					Counts	RMSZ	# Z  > 2	Counts	RMSZ	# Z  > 2
3	EWQ	A	232	-	18,18,18	1.91	3 (16%)	23,26,26	2.41	5 (21%)
4	FAD	B	233	-	53,58,58	1.66	8 (15%)	68,89,89	1.88	18 (26%)
3	EWQ	B	231	-	18,18,18	2.82	6 (33%)	23,26,26	1.90	7 (30%)
4	FAD	A	233	-	53,58,58	1.86	12 (22%)	68,89,89	1.87	16 (23%)

In the following table, the Chirals column lists the number of chiral outliers, the number of chiral centers analysed, the number of these observed in the model and the number defined in the Chemical Component Dictionary. Similar counts are reported in the Torsion and Rings columns. '-' means no outliers of that kind were identified.

Mol	Type	Chain	Res	Link	Chirals	Torsions	Rings
3	EWQ	A	232	-	-	0/4/4/4	0/2/2/2
4	FAD	B	233	-	-	6/30/50/50	0/6/6/6
3	EWQ	B	231	-	-	0/4/4/4	0/2/2/2
4	FAD	A	233	-	-	7/30/50/50	0/6/6/6

All (29) bond length outliers are listed below:

Mol	Chain	Res	Type	Atoms	Z	Observed(Å)	Ideal(Å)
3	B	231	EWQ	C8-C7	7.23	1.44	1.35
3	B	231	EWQ	C2-C3	6.52	1.49	1.40
4	A	233	FAD	C4X-N5	6.23	1.42	1.30
4	B	233	FAD	C4X-N5	5.99	1.42	1.30
3	A	232	EWQ	C2-C3	5.14	1.47	1.40
4	A	233	FAD	C10-N1	5.04	1.43	1.33
4	B	233	FAD	C2A-N3A	4.98	1.40	1.32
3	B	231	EWQ	C3-C4	4.75	1.46	1.40
3	A	232	EWQ	C3-C4	4.18	1.45	1.40
4	A	233	FAD	C2A-N3A	4.18	1.38	1.32
4	B	233	FAD	C10-N1	3.82	1.41	1.33
3	A	232	EWQ	C8-C7	3.47	1.39	1.35
4	A	233	FAD	C1'-C2'	3.22	1.57	1.52
4	A	233	FAD	C6-C7	-3.10	1.35	1.39
4	B	233	FAD	C2A-N1A	3.10	1.39	1.33
4	A	233	FAD	O2'-C2'	-3.06	1.36	1.43
4	B	233	FAD	C1'-C2'	2.89	1.56	1.52
3	B	231	EWQ	C2-C7	2.68	1.49	1.45
4	A	233	FAD	P-O2P	-2.66	1.42	1.55
3	B	231	EWQ	O12-C9	2.55	1.29	1.23
4	B	233	FAD	C9-C8	2.55	1.43	1.39
4	A	233	FAD	C4X-C4	-2.46	1.35	1.44

*Continued on next page...*

*Continued from previous page...*

Mol	Chain	Res	Type	Atoms	Z	Observed(Å)	Ideal(Å)
4	B	233	FAD	P-O1P	-2.21	1.43	1.50
4	A	233	FAD	C2A-N1A	2.19	1.38	1.33
4	A	233	FAD	P-O1P	2.15	1.58	1.50
4	A	233	FAD	C5X-N5	-2.13	1.35	1.39
4	A	233	FAD	O4-C4	-2.12	1.19	1.23
4	B	233	FAD	C5X-N5	-2.08	1.35	1.39
3	B	231	EWQ	C13-C7	2.02	1.54	1.50

All (46) bond angle outliers are listed below:

Mol	Chain	Res	Type	Atoms	Z	Observed(°)	Ideal(°)
3	A	232	EWQ	C8-C9-N10	8.54	124.11	115.42
4	B	233	FAD	N3A-C2A-N1A	-5.95	119.38	128.68
3	B	231	EWQ	C8-C9-N10	5.50	121.03	115.42
4	A	233	FAD	N3A-C2A-N1A	-5.47	120.13	128.68
3	A	232	EWQ	C3-N10-C9	-5.35	118.01	123.03
4	B	233	FAD	C4X-C10-N10	4.70	123.36	116.48
4	A	233	FAD	C7M-C7-C6	-4.56	111.06	119.49
4	A	233	FAD	C4X-C10-N10	3.89	122.17	116.48
4	B	233	FAD	C8M-C8-C7	3.88	128.68	120.74
4	A	233	FAD	C6-C7-C8	3.66	124.91	119.67
4	A	233	FAD	O4B-C1B-C2B	-3.56	101.72	106.93
4	B	233	FAD	C4-N3-C2	-3.37	119.41	125.64
4	B	233	FAD	C4-C4X-N5	3.34	122.98	118.23
4	A	233	FAD	O4'-C4'-C3'	-3.32	101.02	109.10
4	B	233	FAD	C7M-C7-C6	-3.27	113.45	119.49
4	B	233	FAD	O4'-C4'-C5'	-3.20	102.72	109.92
4	A	233	FAD	C9A-C5X-N5	3.19	125.90	122.43
4	B	233	FAD	C10-C4X-N5	-3.17	118.12	124.86
3	B	231	EWQ	C5-C6-C1	3.11	125.94	120.98
3	B	231	EWQ	C17-O16-C6	-3.10	110.78	117.51
4	B	233	FAD	O4-C4-N3	-2.95	114.47	120.12
4	A	233	FAD	O3B-C3B-C4B	-2.94	102.55	111.05
4	A	233	FAD	C8M-C8-C7	2.92	126.72	120.74
4	B	233	FAD	C4X-C4-N3	2.78	120.24	113.19
4	B	233	FAD	C8M-C8-C9	-2.72	114.47	119.49
4	B	233	FAD	C4A-C5A-N7A	-2.70	106.59	109.40
4	A	233	FAD	C4A-C5A-N7A	-2.69	106.60	109.40
3	B	231	EWQ	C15-O14-C4	2.69	121.59	117.53
4	B	233	FAD	O4'-C4'-C3'	-2.66	102.63	109.10
3	A	232	EWQ	O12-C9-C8	-2.63	118.98	125.72
4	A	233	FAD	O2-C2-N1	-2.54	117.62	121.83

*Continued on next page...*

Continued from previous page...

Mol	Chain	Res	Type	Atoms	Z	Observed(°)	Ideal(°)
4	B	233	FAD	O5'-P-O1P	2.49	118.79	109.07
3	A	232	EWQ	C9-C8-C7	-2.43	120.23	123.46
4	A	233	FAD	O2B-C2B-C1B	2.40	119.72	110.85
4	A	233	FAD	O2B-C2B-C3B	2.36	119.47	111.82
4	B	233	FAD	C6-C7-C8	2.35	123.04	119.67
4	A	233	FAD	C9-C8-C7	-2.35	116.30	119.67
3	A	232	EWQ	C5-C6-C1	2.28	124.61	120.98
4	B	233	FAD	C4X-C10-N1	-2.26	119.47	124.73
4	A	233	FAD	C10-C4X-N5	-2.20	120.19	124.86
3	B	231	EWQ	C13-C7-C2	2.14	122.54	119.97
4	B	233	FAD	C9-C8-C7	-2.14	116.60	119.67
3	B	231	EWQ	C3-N10-C9	-2.13	121.04	123.03
4	A	233	FAD	C1B-N9A-C4A	-2.09	122.97	126.64
4	B	233	FAD	C1B-N9A-C4A	-2.06	123.03	126.64
3	B	231	EWQ	C2-C7-C8	-2.03	116.61	118.61

There are no chirality outliers.

All (13) torsion outliers are listed below:

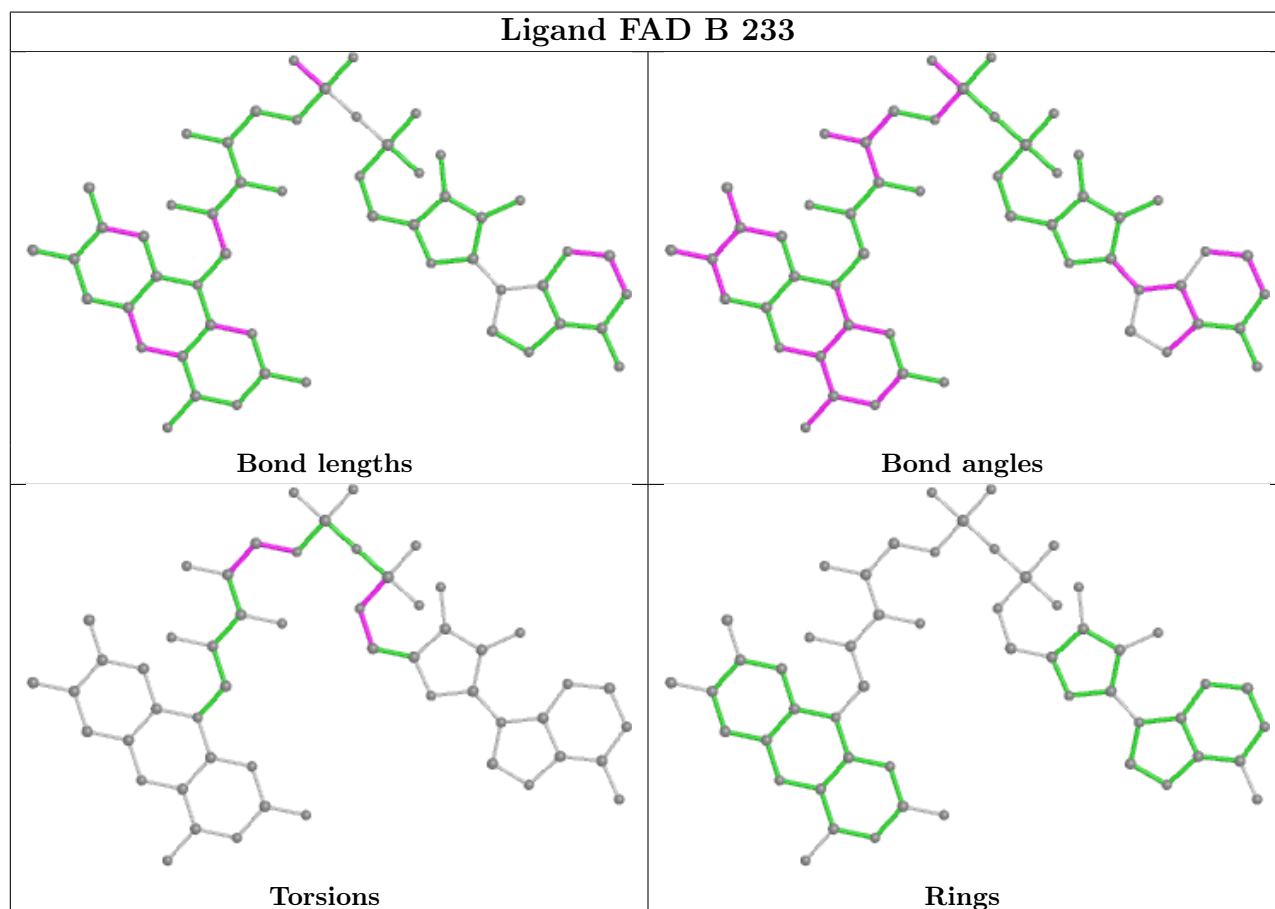
Mol	Chain	Res	Type	Atoms
4	A	233	FAD	C5B-O5B-PA-O1A
4	B	233	FAD	C5B-O5B-PA-O1A
4	B	233	FAD	C5B-O5B-PA-O2A
4	A	233	FAD	C5B-O5B-PA-O3P
4	B	233	FAD	C5B-O5B-PA-O3P
4	A	233	FAD	C5B-O5B-PA-O2A
4	B	233	FAD	C4'-C5'-O5'-P
4	A	233	FAD	C4B-C5B-O5B-PA
4	A	233	FAD	C4'-C5'-O5'-P
4	B	233	FAD	O4'-C4'-C5'-O5'
4	A	233	FAD	P-O3P-PA-O1A
4	A	233	FAD	P-O3P-PA-O2A
4	B	233	FAD	C4B-C5B-O5B-PA

There are no ring outliers.

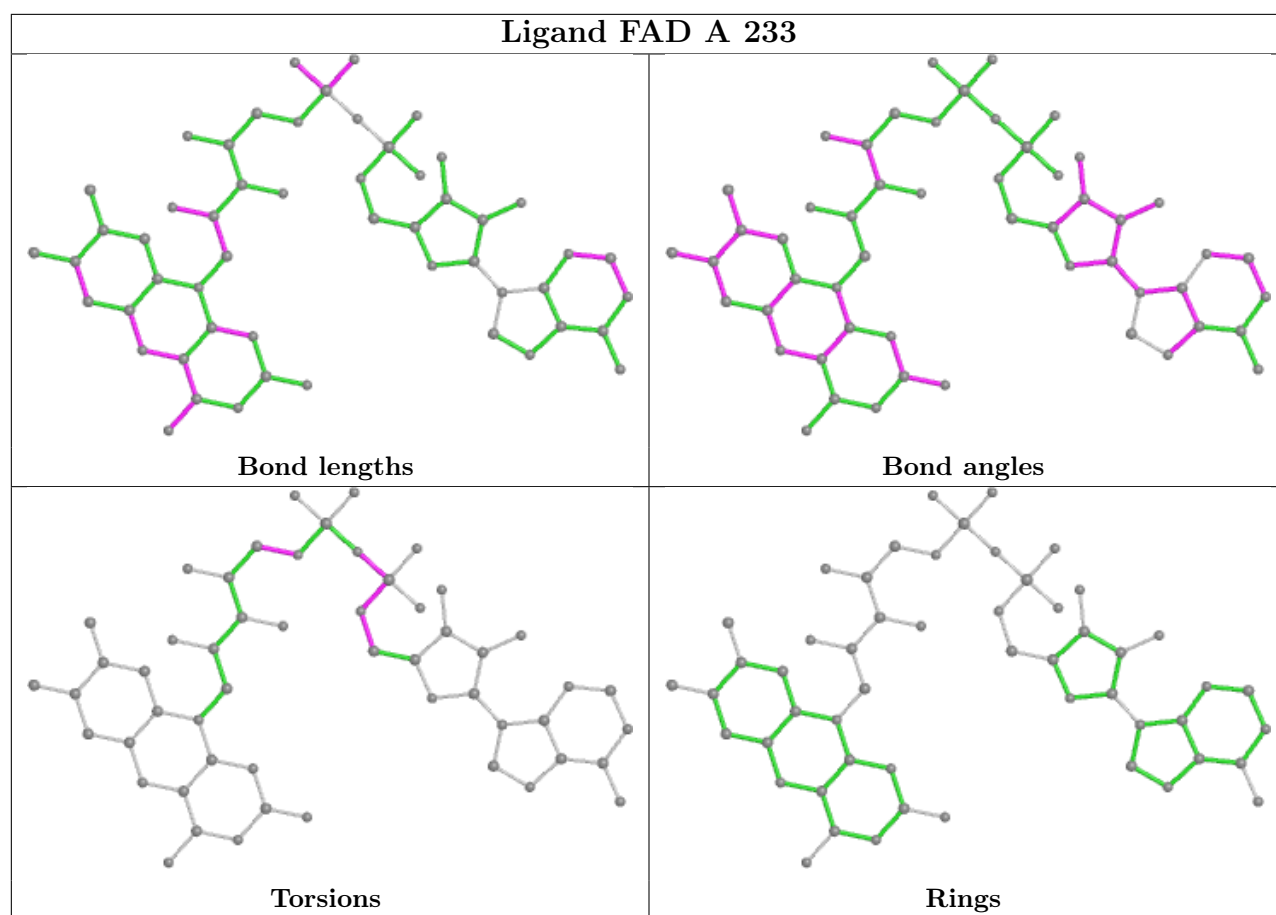
3 monomers are involved in 16 short contacts:

Mol	Chain	Res	Type	Clashes	Symm-Clashes
3	A	232	EWQ	2	0
3	B	231	EWQ	4	0
4	A	233	FAD	10	0

The following is a two-dimensional graphical depiction of Mogul quality analysis of bond lengths, bond angles, torsion angles, and ring geometry for all instances of the Ligand of Interest. In addition, ligands with molecular weight > 250 and outliers as shown on the validation Tables will also be included. For torsion angles, if less than 5% of the Mogul distribution of torsion angles is within 10 degrees of the torsion angle in question, then that torsion angle is considered an outlier. Any bond that is central to one or more torsion angles identified as an outlier by Mogul will be highlighted in the graph. For rings, the root-mean-square deviation (RMSD) between the ring in question and similar rings identified by Mogul is calculated over all ring torsion angles. If the average RMSD is greater than 60 degrees and the minimal RMSD between the ring in question and any Mogul-identified rings is also greater than 60 degrees, then that ring is considered an outlier. The outliers are highlighted in purple. The color gray indicates Mogul did not find sufficient equivalents in the CSD to analyse the geometry.







## 5.7 Other polymers [i](#)

There are no such residues in this entry.

## 5.8 Polymer linkage issues [i](#)

There are no chain breaks in this entry.

## 6 Fit of model and data

### 6.1 Protein, DNA and RNA chains

In the following table, the column labelled ‘#RSRZ > 2’ contains the number (and percentage) of RSRZ outliers, followed by percent RSRZ outliers for the chain as percentile scores relative to all X-ray entries and entries of similar resolution. The OWAB column contains the minimum, median, 95<sup>th</sup> percentile and maximum values of the occupancy-weighted average B-factor per residue. The column labelled ‘Q < 0.9’ lists the number of (and percentage) of residues with an average occupancy less than 0.9.

Mol	Chain	Analysed	<RSRZ>	#RSRZ>2	OWAB(Å <sup>2</sup> )	Q<0.9
1	A	230/230 (100%)	0.76	31 (13%) <b>3</b> <b>2</b>	10, 25, 48, 62	0
1	B	230/230 (100%)	0.36	20 (8%) <b>10</b> <b>10</b>	9, 18, 41, 54	0
All	All	460/460 (100%)	0.56	51 (11%) <b>5</b> <b>5</b>	9, 20, 45, 62	0

All (51) RSRZ outliers are listed below:

Mol	Chain	Res	Type	RSRZ
1	B	1	ALA	7.0
1	A	230	GLN	6.5
1	B	194	ILE	6.3
1	A	194	ILE	5.7
1	A	58	THR	4.8
1	A	59	LEU	4.8
1	B	230	GLN	4.7
1	B	157	LYS	4.7
1	A	1	ALA	4.6
1	A	197	GLU	4.4
1	A	128	ILE	4.3
1	B	197	GLU	4.2
1	B	198	GLU	3.9
1	A	198	GLU	3.9
1	A	131	PHE	3.8
1	A	2	GLY	3.8
1	B	160	VAL	3.8
1	A	229	GLY	3.7
1	A	133	ASP	3.5
1	B	156	THR	3.3
1	A	57	GLY	3.2
1	A	157	LYS	3.2
1	A	225	HIS	3.2
1	A	62	PRO	3.0

*Continued on next page...*

*Continued from previous page...*

Mol	Chain	Res	Type	RSRZ
1	B	158	THR	3.0
1	A	196	SER	3.0
1	A	78	ARG	2.9
1	A	129	PRO	2.8
1	A	158	THR	2.8
1	A	130	GLY	2.8
1	B	144	LEU	2.8
1	A	226	TRP	2.8
1	B	196	SER	2.8
1	B	108	VAL	2.7
1	A	228	PHE	2.6
1	B	159	GLY	2.5
1	A	135	GLY	2.5
1	A	155	TYR	2.4
1	A	199	GLU	2.4
1	B	2	GLY	2.4
1	A	153	GLU	2.4
1	B	153	GLU	2.3
1	B	98	ILE	2.2
1	B	199	GLU	2.2
1	A	112	LEU	2.1
1	A	63	GLU	2.1
1	B	229	GLY	2.1
1	A	166	TYR	2.1
1	A	216	LYS	2.0
1	B	201	LYS	2.0
1	B	101	PHE	2.0

## 6.2 Non-standard residues in protein, DNA, RNA chains [i](#)

There are no non-standard protein/DNA/RNA residues in this entry.

## 6.3 Carbohydrates [i](#)

There are no monosaccharides in this entry.

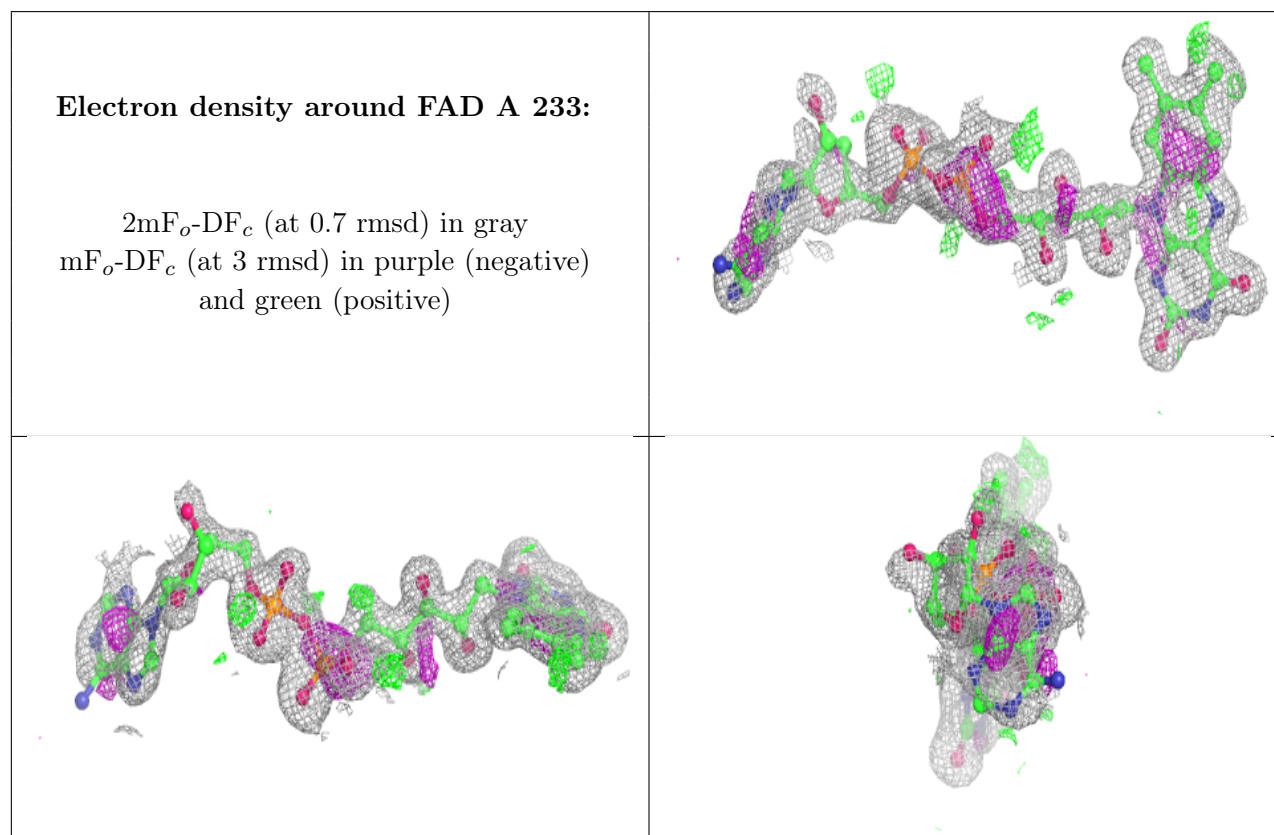
## 6.4 Ligands [i](#)

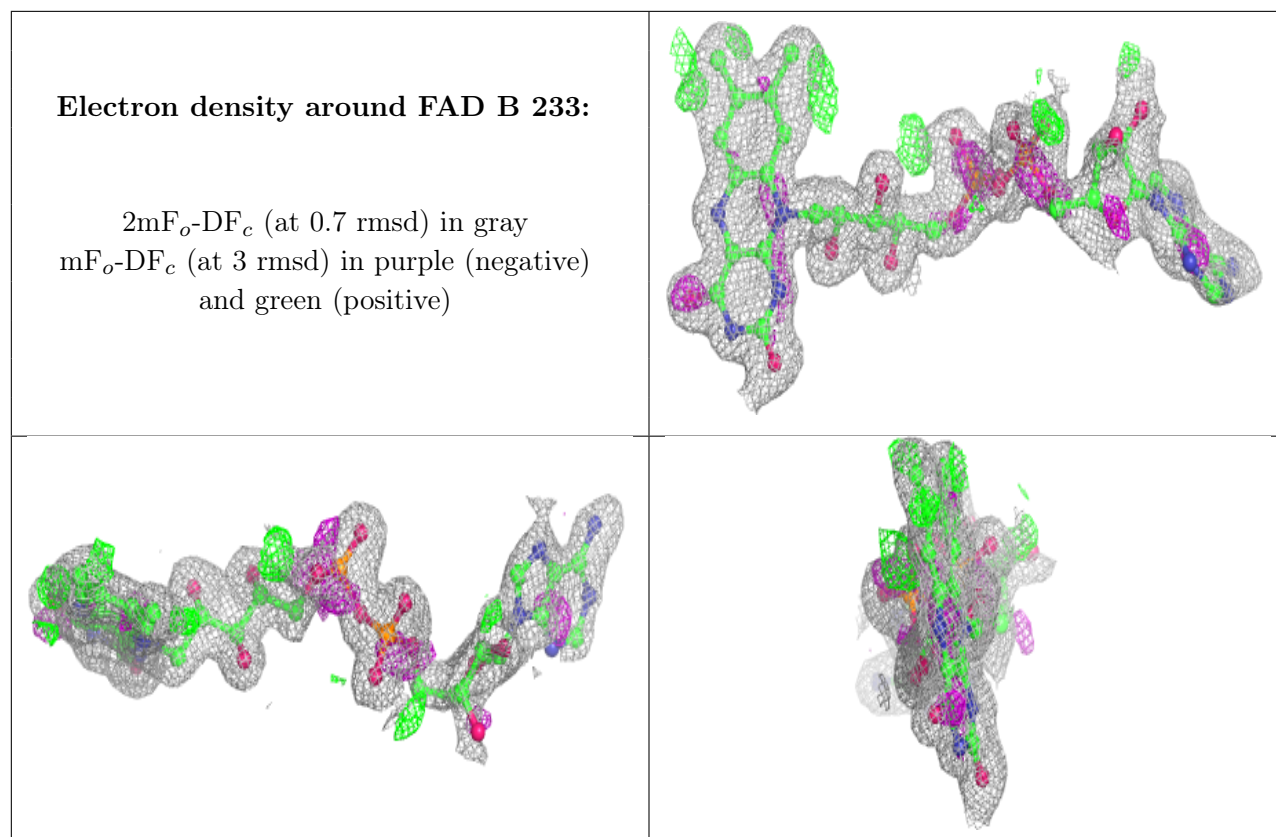
In the following table, the Atoms column lists the number of modelled atoms in the group and the number defined in the chemical component dictionary. The B-factors column lists the minimum,

median, 95<sup>th</sup> percentile and maximum values of B factors of atoms in the group. The column labelled 'Q< 0.9' lists the number of atoms with occupancy less than 0.9.

Mol	Type	Chain	Res	Atoms	RSCC	RSR	B-factors(Å <sup>2</sup> )	Q<0.9
3	EWQ	B	231	17/17	0.85	0.13	23,30,36,39	0
4	FAD	A	233	53/53	0.86	0.16	15,25,58,59	0
4	FAD	B	233	53/53	0.88	0.14	16,26,53,57	0
3	EWQ	A	232	17/17	0.89	0.10	18,22,29,33	0
2	ZN	A	231	1/1	0.97	0.07	29,29,29,29	0
2	ZN	B	232	1/1	0.99	0.04	19,19,19,19	0

The following is a graphical depiction of the model fit to experimental electron density of all instances of the Ligand of Interest. In addition, ligands with molecular weight > 250 and outliers as shown on the geometry validation Tables will also be included. Each fit is shown from different orientation to approximate a three-dimensional view.





## 6.5 Other polymers [i](#)

There are no such residues in this entry.