



Full wwPDB X-ray Structure Validation Report ⓘ

Aug 8, 2023 – 09:24 AM EDT

PDB ID : 1ND5
Title : Crystal Structures of Human Prostatic Acid Phosphatase in Complex with a Phosphate Ion and alpha-Benzylaminobenzylphosphonic Acid Update the Mechanistic Picture and Offer New Insights into Inhibitor Design
Authors : Ortlund, E.; LaCount, M.W.; Lebioda, L.
Deposited on : 2002-12-07
Resolution : 2.90 Å(reported)

This is a Full wwPDB X-ray Structure Validation Report for a publicly released PDB entry.

We welcome your comments at validation@mail.wwpdb.org

A user guide is available at

<https://www.wwpdb.org/validation/2017/XrayValidationReportHelp>

with specific help available everywhere you see the ⓘ symbol.

The types of validation reports are described at

<http://www.wwpdb.org/validation/2017/FAQs#types>.

The following versions of software and data (see [references ⓘ](#)) were used in the production of this report:

MolProbity : 4.02b-467
Mogul : 1.8.5 (274361), CSD as541be (2020)
Xtrriage (Phenix) : **NOT EXECUTED**
EDS : **NOT EXECUTED**
buster-report : 1.1.7 (2018)
Percentile statistics : 20191225.v01 (using entries in the PDB archive December 25th 2019)
Ideal geometry (proteins) : Engh & Huber (2001)
Ideal geometry (DNA, RNA) : Parkinson et al. (1996)
Validation Pipeline (wwPDB-VP) : 2.35

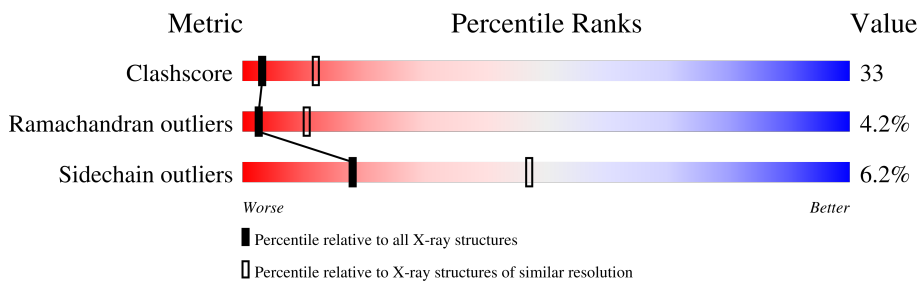
1 Overall quality at a glance

The following experimental techniques were used to determine the structure:

X-RAY DIFFRACTION

The reported resolution of this entry is 2.90 Å.

Percentile scores (ranging between 0-100) for global validation metrics of the entry are shown in the following graphic. The table shows the number of entries on which the scores are based.



Metric	Whole archive (#Entries)	Similar resolution (#Entries, resolution range(Å))
Clashscore	141614	2172 (2.90-2.90)
Ramachandran outliers	138981	2115 (2.90-2.90)
Sidechain outliers	138945	2117 (2.90-2.90)

The table below summarises the geometric issues observed across the polymeric chains and their fit to the electron density. The red, orange, yellow and green segments of the lower bar indicate the fraction of residues that contain outliers for ≥ 3 , 2, 1 and 0 types of geometric quality criteria respectively. A grey segment represents the fraction of residues that are not modelled. The numeric value for each fraction is indicated below the corresponding segment, with a dot representing fractions $\leq 5\%$

Note EDS was not executed.

Mol	Chain	Length	Quality of chain
1	A	354	44% (green), 47% (yellow), 6% (orange), 3% (red), 0% (grey)
1	B	354	47% (green), 44% (yellow), 5% (orange), 4% (red), 0% (grey)
1	C	354	42% (green), 49% (yellow), 6% (orange), 3% (red), 0% (grey)
1	D	354	43% (green), 47% (yellow), 6% (orange), 4% (red), 0% (grey)
2	E	2	50% (yellow), 50% (orange)
2	F	2	100% (yellow)
2	G	2	100% (yellow)
2	H	2	100% (orange)

Continued on next page...

Continued from previous page...

Mol	Chain	Length	Quality of chain
3	I	3	

The following table lists non-polymeric compounds, carbohydrate monomers and non-standard residues in protein, DNA, RNA chains that are outliers for geometric or electron-density-fit criteria:

Mol	Type	Chain	Res	Chirality	Geometry	Clashes	Electron density
2	NAG	E	2	X	-	-	-
2	NAG	F	1	X	-	-	-
2	NAG	G	1	X	-	X	-
2	NAG	H	1	X	-	X	-
2	NAG	H	2	X	-	-	-
3	NAG	I	1	X	-	-	-
6	NDG	B	5004	-	-	X	-
7	NAG	D	5009	X	-	-	-

2 Entry composition [i](#)

There are 8 unique types of molecules in this entry. The entry contains 11727 atoms, of which 0 are hydrogens and 0 are deuteriums.

In the tables below, the ZeroOcc column contains the number of atoms modelled with zero occupancy, the AltConf column contains the number of residues with at least one atom in alternate conformation and the Trace column contains the number of residues modelled with at most 2 atoms.

- Molecule 1 is a protein called prostatic acid phosphatase.

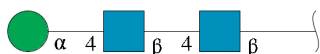
Mol	Chain	Residues	Atoms					ZeroOcc	AltConf	Trace
			Total	C	N	O	S			
1	A	342	2800	1807	461	516	16	0	0	0
1	B	342	2796	1802	461	517	16	0	0	0
1	C	342	2800	1807	461	516	16	0	0	0
1	D	342	2800	1807	461	516	16	0	0	0

- Molecule 2 is an oligosaccharide called 2-acetamido-2-deoxy-beta-D-glucopyranose-(1-4)-2-acetamido-2-deoxy-beta-D-glucopyranose.



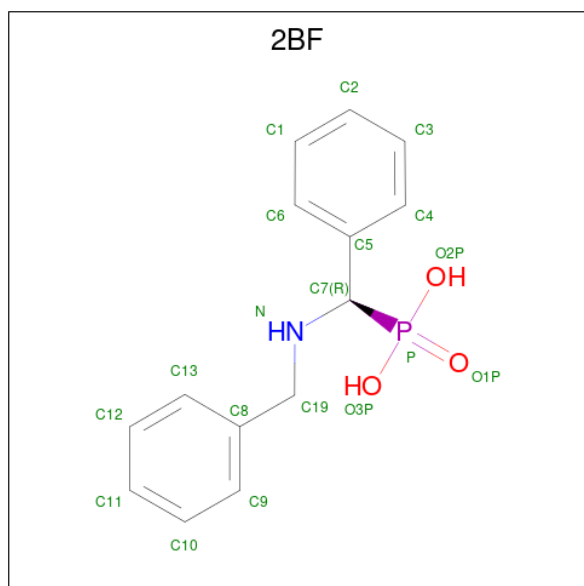
Mol	Chain	Residues	Atoms				ZeroOcc	AltConf	Trace
			Total	C	N	O			
2	E	2	30	16	2	12	0	0	0
2	F	2	30	16	2	12	0	0	0
2	G	2	30	16	2	12	0	0	0
2	H	2	30	16	2	12	0	0	0

- Molecule 3 is an oligosaccharide called alpha-D-mannopyranose-(1-4)-2-acetamido-2-deoxy-beta-D-glucopyranose-(1-4)-2-acetamido-2-deoxy-beta-D-glucopyranose.



Mol	Chain	Residues	Atoms				ZeroOcc	AltConf	Trace
			Total	C	N	O			
3	I	3	42	22	2	18	0	0	0

- Molecule 4 is ALPHA-BENZYL-AMINOBENZYL-PHOSPHONIC ACID (three-letter code: 2BF) (formula: C₁₄H₁₆NO₃P).



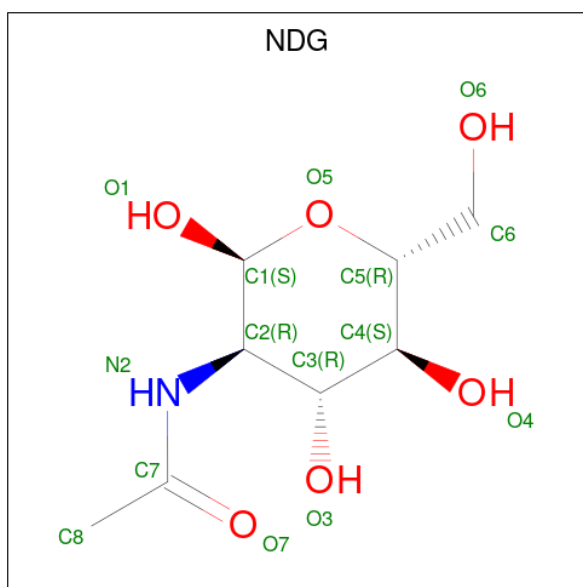
Mol	Chain	Residues	Atoms					ZeroOcc	AltConf
			Total	C	N	O	P		
4	A	1	19	14	1	3	1	0	0
4	B	1	19	14	1	3	1	0	0
4	C	1	19	14	1	3	1	0	0
4	D	1	19	14	1	3	1	0	0

- Molecule 5 is PENTAETHYLENE GLYCOL (three-letter code: 1PE) (formula: C₁₀H₂₂O₆).



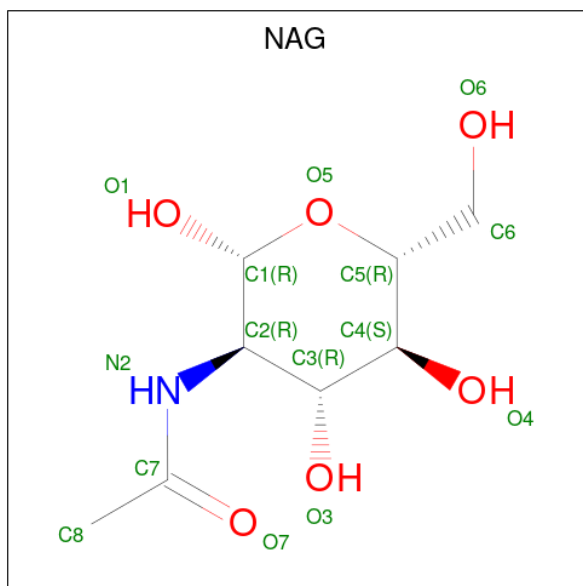
Mol	Chain	Residues	Atoms			ZeroOcc	AltConf
5	A	1	Total	C	O	0	0
			16	10	6		
5	A	1	Total	C	O	0	0
			16	10	6		
5	A	1	Total	C	O	0	0
			16	10	6		
5	B	1	Total	C	O	0	0
			16	10	6		
5	B	1	Total	C	O	0	0
			16	10	6		
5	C	1	Total	C	O	0	0
			16	10	6		
5	C	1	Total	C	O	0	0
			16	10	6		
5	D	1	Total	C	O	0	0
			16	10	6		

- Molecule 6 is 2-acetamido-2-deoxy-alpha-D-glucopyranose (three-letter code: NDG) (formula: C₈H₁₅NO₆).



Mol	Chain	Residues	Atoms				ZeroOcc	AltConf
			Total	C	N	O		
6	B	1	15	8	1	6	0	0

- Molecule 7 is 2-acetamido-2-deoxy-beta-D-glucopyranose (three-letter code: NAG) (formula: $C_8H_{15}NO_6$).



Mol	Chain	Residues	Atoms				ZeroOcc	AltConf
			Total	C	N	O		
7	D	1	15	8	1	6	0	0

- Molecule 8 is water.

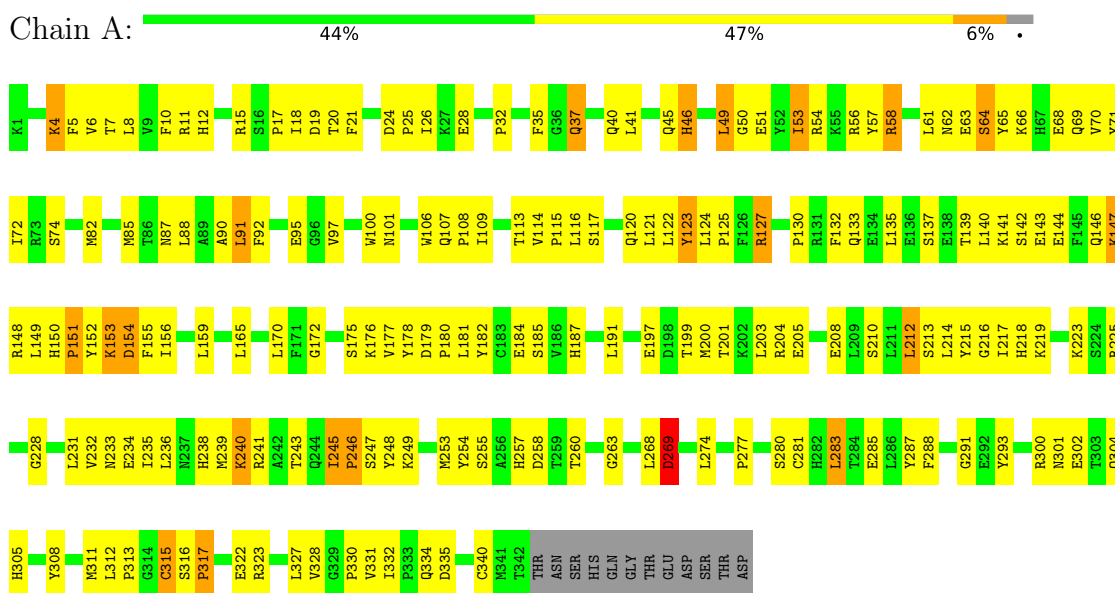
Mol	Chain	Residues	Atoms	ZeroOcc	AltConf
8	A	47	Total O 47 47	0	0
8	B	35	Total O 35 35	0	0
8	C	22	Total O 22 22	0	0
8	D	31	Total O 31 31	0	0

3 Residue-property plots i

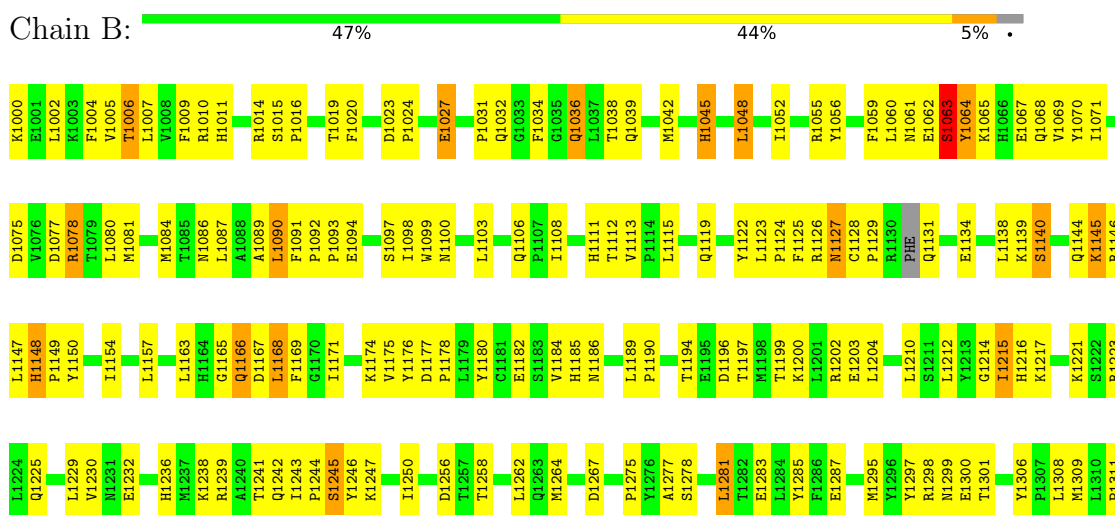
These plots are drawn for all protein, RNA, DNA and oligosaccharide chains in the entry. The first graphic for a chain summarises the proportions of the various outlier classes displayed in the second graphic. The second graphic shows the sequence view annotated by issues in geometry. Residues are color-coded according to the number of geometric quality criteria for which they contain at least one outlier: green = 0, yellow = 1, orange = 2 and red = 3 or more. Stretches of 2 or more consecutive residues without any outlier are shown as a green connector. Residues present in the sample, but not in the model, are shown in grey.

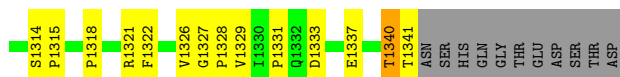
Note EDS was not executed.

- Molecule 1: prostatic acid phosphatase

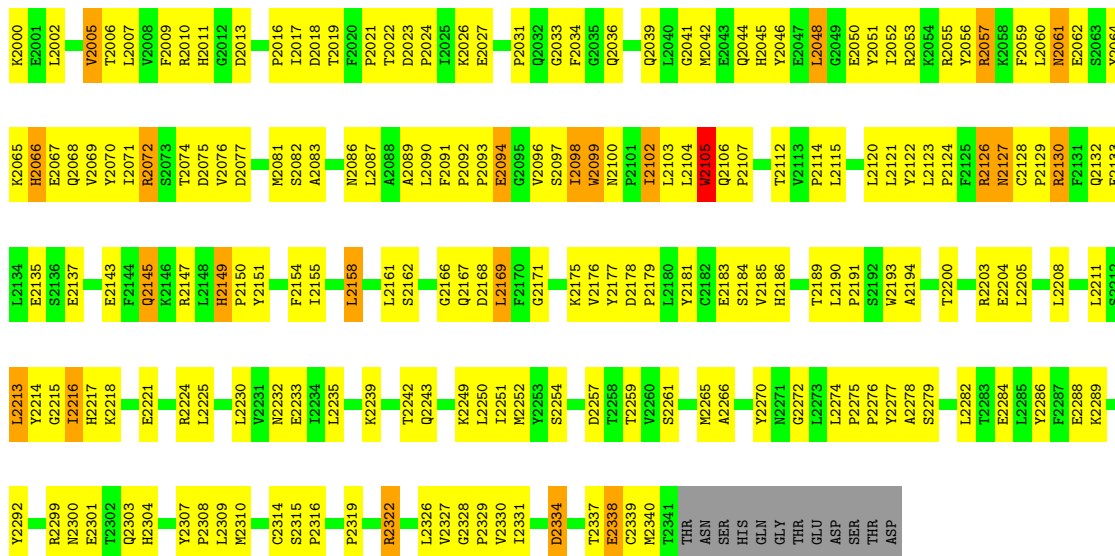


- Molecule 1: prostatic acid phosphatase

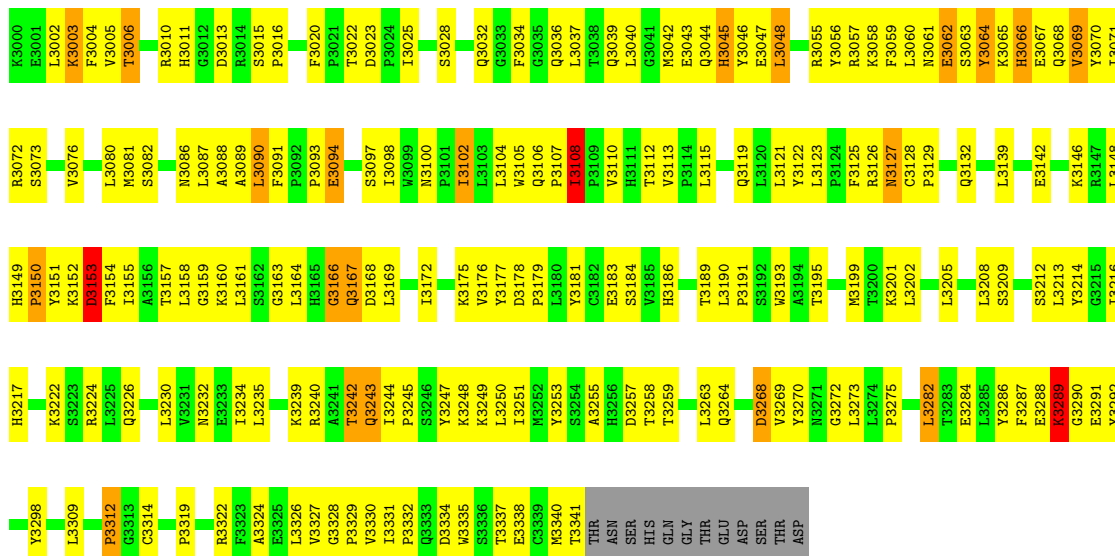




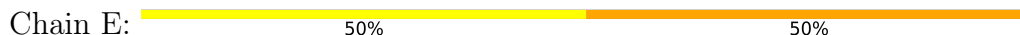
- Molecule 1: prostatic acid phosphatase



- Molecule 1: prostatic acid phosphatase




- Molecule 2: 2-acetamido-2-deoxy-beta-D-glucopyranose-(1-4)-2-acetamido-2-deoxy-beta-D-glucopyranose



MAG1
MAG2

- Molecule 2: 2-acetamido-2-deoxy-beta-D-glucopyranose-(1-4)-2-acetamido-2-deoxy-beta-D-glucopyranose

Chain F:  100%MAG1
MAG2

- Molecule 2: 2-acetamido-2-deoxy-beta-D-glucopyranose-(1-4)-2-acetamido-2-deoxy-beta-D-glucopyranose

Chain G:  100%MAG1
MAG2

- Molecule 2: 2-acetamido-2-deoxy-beta-D-glucopyranose-(1-4)-2-acetamido-2-deoxy-beta-D-glucopyranose

Chain H:  100%MAG1
MAG2

- Molecule 3: alpha-D-mannopyranose-(1-4)-2-acetamido-2-deoxy-beta-D-glucopyranose-(1-4)-2-acetamido-2-deoxy-beta-D-glucopyranose

Chain I:  33% 33% 33%MAG1
MAG2
MAG3

4 Data and refinement statistics

Xtrriage (Phenix) and EDS were not executed - this section is therefore incomplete.

Property	Value	Source
Space group	P 21 21 21	Depositor
Cell constants a, b, c, α , β , γ	120.10Å 204.86Å 71.22Å 90.00° 90.00° 90.00°	Depositor
Resolution (Å)	77.94 – 2.90	Depositor
% Data completeness (in resolution range)	78.9 (77.94-2.90)	Depositor
R_{merge}	0.06	Depositor
R_{sym}	(Not available)	Depositor
Refinement program	CNS	Depositor
R, R_{free}	0.205 , 0.279	Depositor
Estimated twinning fraction	No twinning to report.	Xtrriage
Total number of atoms	11727	wwPDB-VP
Average B, all atoms (Å ²)	29.0	wwPDB-VP

5 Model quality [i](#)

5.1 Standard geometry [i](#)

Bond lengths and bond angles in the following residue types are not validated in this section: NDG, NAG, 2BF, 1PE, MAN

The Z score for a bond length (or angle) is the number of standard deviations the observed value is removed from the expected value. A bond length (or angle) with $|Z| > 5$ is considered an outlier worth inspection. RMSZ is the root-mean-square of all Z scores of the bond lengths (or angles).

Mol	Chain	Bond lengths		Bond angles	
		RMSZ	# Z >5	RMSZ	# Z >5
1	A	0.38	0/2882	0.64	0/3914
1	B	0.39	0/2876	0.64	0/3905
1	C	0.39	0/2882	0.64	0/3914
1	D	0.39	0/2882	0.62	0/3914
All	All	0.39	0/11522	0.64	0/15647

There are no bond length outliers.

There are no bond angle outliers.

There are no chirality outliers.

There are no planarity outliers.

5.2 Too-close contacts [i](#)

In the following table, the Non-H and H(model) columns list the number of non-hydrogen atoms and hydrogen atoms in the chain respectively. The H(added) column lists the number of hydrogen atoms added and optimized by MolProbity. The Clashes column lists the number of clashes within the asymmetric unit, whereas Symm-Clashes lists symmetry-related clashes.

Mol	Chain	Non-H	H(model)	H(added)	Clashes	Symm-Clashes
1	A	2800	0	2749	200	0
1	B	2796	0	2745	177	0
1	C	2800	0	2747	196	0
1	D	2800	0	2746	195	0
2	E	30	0	27	4	0
2	F	30	0	28	4	0
2	G	30	0	28	9	0
2	H	30	0	27	8	0
3	I	42	0	38	4	0

Continued on next page...

Continued from previous page...

Mol	Chain	Non-H	H(model)	H(added)	Clashes	Symm-Clashes
4	A	19	0	14	3	0
4	B	19	0	14	2	0
4	C	19	0	14	2	0
4	D	19	0	14	0	0
5	A	48	0	66	3	0
5	B	32	0	44	5	0
5	C	32	0	44	2	0
5	D	16	0	22	1	0
6	B	15	0	12	7	0
7	D	15	0	14	6	0
8	A	47	0	0	4	0
8	B	35	0	0	4	0
8	C	22	0	0	1	0
8	D	31	0	0	8	0
All	All	11727	0	11393	764	0

The all-atom clashscore is defined as the number of clashes found per 1000 atoms (including hydrogen atoms). The all-atom clashscore for this structure is 33.

All (764) close contacts within the same asymmetric unit are listed below, sorted by their clash magnitude.

Atom-1	Atom-2	Interatomic distance (Å)	Clash overlap (Å)
3:I:1:NAG:H61	3:I:2:NAG:H82	1.37	1.07
1:B:1145:LYS:HA	1:B:1145:LYS:HE3	1.32	1.05
1:B:1299:ASN:ND2	2:G:1:NAG:H1	1.74	1.02
1:B:1299:ASN:HD21	2:G:1:NAG:H1	1.23	0.98
1:C:2007:LEU:HD22	1:C:2282:LEU:HD22	1.43	0.97
1:D:3100:ASN:HD21	1:D:3102:ILE:HB	1.29	0.97
1:A:66:LYS:HD3	1:B:1032:GLN:HE22	1.30	0.96
2:E:1:NAG:H61	2:E:2:NAG:H82	1.49	0.94
1:B:1007:LEU:HD13	1:B:1052:ILE:HD13	1.50	0.93
1:B:1199:THR:O	1:B:1203:GLU:HG3	1.68	0.91
1:B:1299:ASN:HD21	2:G:1:NAG:C1	1.83	0.91
1:C:2307:TYR:CE1	2:H:1:NAG:O1	2.24	0.91
1:A:148:ARG:O	1:A:151:PRO:HD2	1.73	0.89
1:A:150:HIS:HB3	1:A:151:PRO:HD3	1.55	0.89
1:B:1127:ASN:HD22	1:B:1127:ASN:H	0.92	0.88
1:B:1064:TYR:O	1:B:1065:LYS:HG3	1.75	0.86
1:C:2145:GLN:HE21	1:C:2145:GLN:HA	1.39	0.86
1:A:180:PRO:O	1:A:184:GLU:HG3	1.73	0.86
1:B:1127:ASN:H	1:B:1127:ASN:ND2	1.74	0.86

Continued on next page...

Continued from previous page...

Atom-1	Atom-2	Interatomic distance (Å)	Clash overlap (Å)
1:D:3032:GLN:HB3	1:D:3036:GLN:HG2	1.56	0.86
1:A:135:LEU:O	1:A:139:THR:HG23	1.77	0.85
1:B:1299:ASN:CG	2:G:1:NAG:H1	1.98	0.84
1:D:3087:LEU:HB3	1:D:3108:ILE:HD12	1.56	0.84
1:B:1094:GLU:HA	1:B:1098:ILE:HD11	1.61	0.83
1:B:1148:HIS:HB3	1:B:1149:PRO:HD3	1.61	0.83
1:C:2288:GLU:HG3	1:C:2289:LYS:H	1.44	0.83
1:C:2149:HIS:HB3	1:C:2150:PRO:HD3	1.61	0.82
1:D:3340:MET:HE2	1:D:3341:THR:HG22	1.61	0.82
1:B:1299:ASN:OD1	2:G:1:NAG:H1	1.80	0.82
1:C:2098:ILE:HG21	1:C:2104:LEU:HD22	1.61	0.81
1:D:3065:LYS:HB2	1:D:3068:GLN:HG3	1.63	0.80
1:C:2190:LEU:HB3	1:C:2191:PRO:HD2	1.63	0.80
1:C:2288:GLU:HG3	1:C:2289:LYS:HG2	1.62	0.80
1:B:1275:PRO:HD2	1:B:1278:SER:HB3	1.63	0.80
1:B:1010:ARG:HD2	1:B:1256:ASP:HB3	1.61	0.80
1:C:2050:GLU:HG3	1:C:2089:ALA:HB1	1.64	0.79
1:A:56:ARG:HG2	1:A:57:TYR:CD2	2.18	0.79
1:D:3003:LYS:HG3	1:D:3292:TYR:HE2	1.47	0.79
1:D:3025:ILE:H	1:D:3025:ILE:HD12	1.47	0.79
1:B:1186:ASN:HD21	6:B:5004:NDG:C1	1.95	0.79
1:B:1185:HIS:HA	6:B:5004:NDG:H8C3	1.62	0.78
1:B:1125:PHE:H	1:B:1225:GLN:HE22	1.32	0.78
1:C:2081:MET:HG2	1:D:3107:PRO:HB2	1.65	0.78
1:A:139:THR:HG22	1:A:218:HIS:HB3	1.65	0.78
1:C:2090:LEU:HD13	1:C:2091:PHE:CE1	2.19	0.77
2:H:1:NAG:H61	2:H:2:NAG:H2	1.66	0.76
1:D:3166:GLY:O	1:D:3168:ASP:N	2.17	0.75
1:A:6:VAL:HG22	1:A:285:GLU:HG2	1.67	0.75
1:A:245:ILE:HD12	1:A:246:PRO:CD	2.17	0.75
1:A:8:LEU:HD23	1:A:283:LEU:HB3	1.69	0.75
1:A:181:LEU:HD23	1:A:191:LEU:HD22	1.68	0.75
1:B:1267:ASP:OD2	1:B:1311:PRO:HG3	1.87	0.74
1:A:41:LEU:O	1:A:45:GLN:HG3	1.88	0.74
1:D:3149:HIS:HB3	1:D:3150:PRO:HD3	1.68	0.74
1:B:1045:HIS:HD2	1:B:1086:ASN:HD22	1.35	0.74
1:D:3155:ILE:HG21	1:D:3167:GLN:HG3	1.68	0.74
1:C:2176:VAL:O	1:C:2179:PRO:HD2	1.87	0.74
1:D:3289:LYS:H	1:D:3289:LYS:HD2	1.51	0.74
1:D:3322:ARG:HH11	1:D:3322:ARG:HG2	1.53	0.73
7:D:5009:NAG:O7	7:D:5009:NAG:O1	2.06	0.73

Continued on next page...

Continued from previous page...

Atom-1	Atom-2	Interatomic distance (Å)	Clash overlap (Å)
1:A:61:LEU:O	1:A:63:GLU:N	2.21	0.73
1:A:63:GLU:HG2	8:A:4111:HOH:O	1.89	0.73
1:C:2288:GLU:HG3	1:C:2289:LYS:N	2.04	0.73
1:D:3169:LEU:O	8:D:4122:HOH:O	2.06	0.72
1:B:1127:ASN:HD22	1:B:1127:ASN:N	1.73	0.72
1:A:316:SER:HB2	1:A:317:PRO:HD2	1.70	0.72
1:D:3004:PHE:HZ	1:D:3251:ILE:HD12	1.54	0.72
1:C:2007:LEU:CD2	1:C:2282:LEU:HD22	2.20	0.71
1:D:3115:LEU:HD22	1:D:3122:TYR:CE1	2.25	0.71
1:C:2007:LEU:HD22	1:C:2282:LEU:CD2	2.20	0.71
1:C:2145:GLN:HA	1:C:2145:GLN:NE2	2.06	0.71
1:B:1281:LEU:HD23	1:B:1281:LEU:H	1.54	0.70
1:A:66:LYS:CD	1:B:1032:GLN:HE22	2.02	0.70
1:B:1163:LEU:HD11	1:B:1174:LYS:CB	2.21	0.70
1:D:3172:ILE:N	8:D:4122:HOH:O	2.23	0.70
1:A:212:LEU:HD12	1:A:217:ILE:HG13	1.72	0.70
1:D:3268:ASP:HB3	1:D:3312:PRO:HG3	1.74	0.70
1:D:3040:LEU:O	1:D:3044:GLN:HG3	1.92	0.70
1:D:3125:PHE:H	1:D:3226:GLN:HE22	1.39	0.70
1:B:1123:LEU:HD12	1:B:1258:THR:HA	1.75	0.69
1:D:3062:GLU:H	1:D:3062:GLU:CD	1.95	0.69
1:A:49:LEU:HD13	1:A:87:ASN:HD21	1.58	0.69
1:B:1007:LEU:CD1	1:B:1052:ILE:HD13	2.21	0.69
1:B:1077:ASP:O	1:B:1081:MET:HG3	1.93	0.69
1:B:1239:ARG:HD2	1:B:1246:TYR:HE2	1.58	0.69
1:C:2191:PRO:HG2	1:C:2194:ALA:HB2	1.74	0.69
1:B:1011:HIS:NE2	1:B:1078:ARG:HD2	2.08	0.68
1:B:1306:TYR:CE2	2:G:1:NAG:H5	2.29	0.68
1:A:82:MET:HA	1:A:85:MET:HE2	1.76	0.68
1:D:3224:ARG:HA	1:D:3330:VAL:O	1.94	0.68
1:D:3288:GLU:O	1:D:3290:GLY:N	2.25	0.68
3:I:1:NAG:C6	3:I:2:NAG:H82	2.21	0.68
1:B:1297:TYR:HB2	1:B:1308:LEU:HD11	1.76	0.68
1:B:1045:HIS:CD2	1:B:1086:ASN:HD22	2.12	0.67
3:I:1:NAG:H61	3:I:2:NAG:C8	2.21	0.67
1:A:58:ARG:HH11	1:A:58:ARG:HG2	1.58	0.67
1:C:2319:PRO:HG2	1:C:2322:ARG:HB2	1.77	0.67
1:D:3127:ASN:HD22	1:D:3127:ASN:H	1.42	0.67
1:D:3169:LEU:HB3	1:D:3209:SER:HB2	1.76	0.67
1:C:2120:LEU:HD23	1:C:2120:LEU:O	1.94	0.66
1:D:3100:ASN:ND2	1:D:3102:ILE:HB	2.08	0.66

Continued on next page...

Continued from previous page...

Atom-1	Atom-2	Interatomic distance (Å)	Clash overlap (Å)
1:C:2068:GLN:HG3	1:C:2249:LYS:HG3	1.78	0.66
1:D:3055:ARG:HG2	1:D:3056:TYR:CE2	2.31	0.66
1:B:1163:LEU:HD11	1:B:1174:LYS:HB2	1.78	0.66
1:B:1119:GLN:HB3	5:B:7001:1PE:H142	1.78	0.66
1:B:1281:LEU:HD23	1:B:1281:LEU:N	2.11	0.66
1:C:2130:ARG:HD3	1:C:2221:GLU:OE2	1.95	0.66
1:C:2005:VAL:HG22	1:C:2250:LEU:HD12	1.76	0.65
1:D:3232:ASN:HB2	1:D:3331:ILE:HG23	1.78	0.65
1:A:54:ARG:HG3	1:A:91:LEU:HD22	1.78	0.65
1:B:1015:SER:HB2	1:B:1016:PRO:HD2	1.79	0.65
1:C:2200:THR:O	1:C:2204:GLU:HG3	1.96	0.65
1:A:49:LEU:O	1:A:53:ILE:HG22	1.96	0.65
1:C:2232:ASN:HD22	1:C:2331:ILE:HD13	1.61	0.65
1:B:1004:PHE:HZ	1:B:1250:ILE:HD12	1.62	0.64
1:A:258:ASP:OD2	4:A:6000:2BF:H7	1.97	0.64
1:B:1011:HIS:CD2	1:B:1078:ARG:HD2	2.31	0.64
1:B:1298:ARG:HH12	1:B:1301:THR:HG22	1.62	0.64
1:D:3148:LEU:HD21	1:D:3167:GLN:NE2	2.13	0.64
1:C:2098:ILE:HG22	1:C:2099:TRP:H	1.63	0.64
1:A:283:LEU:N	1:A:283:LEU:HD23	2.13	0.63
1:B:1129:PRO:O	1:B:1131:GLN:HB2	1.98	0.63
1:D:3324:ALA:HA	1:D:3327:VAL:HG12	1.79	0.63
1:A:130:PRO:HD2	1:A:340:CYS:HB3	1.81	0.62
1:C:2100:ASN:O	1:C:2104:LEU:HD23	1.97	0.62
1:C:2176:VAL:C	1:C:2179:PRO:HD2	2.20	0.62
1:D:3322:ARG:HH21	1:D:3326:LEU:HD21	1.64	0.62
1:B:1275:PRO:HD2	1:B:1278:SER:CB	2.29	0.62
1:A:8:LEU:HD11	1:A:53:ILE:HD13	1.81	0.62
1:A:74:SER:HB2	1:A:255:SER:HB3	1.82	0.62
1:A:182:TYR:O	1:A:185:SER:HB3	1.98	0.62
1:D:3242:THR:HG22	1:D:3243:GLN:HG2	1.81	0.62
1:B:1078:ARG:NH2	4:B:6001:2BF:O3P	2.33	0.62
1:B:1098:ILE:HG22	1:B:1098:ILE:O	1.99	0.62
1:D:3172:ILE:HB	8:D:4122:HOH:O	2.00	0.62
1:D:3224:ARG:HG2	1:D:3330:VAL:HA	1.81	0.62
1:C:2114:PRO:HD3	1:D:3113:VAL:HG22	1.82	0.61
1:C:2169:LEU:HD11	1:C:2208:LEU:HD23	1.81	0.61
2:H:2:NAG:H3	2:H:2:NAG:H83	1.82	0.61
1:B:1056:TYR:HB3	1:B:1060:LEU:HD23	1.82	0.61
1:C:2098:ILE:O	1:C:2099:TRP:HB3	2.00	0.61
1:C:2178:ASP:HB3	1:C:2179:PRO:HD3	1.82	0.61

Continued on next page...

Continued from previous page...

Atom-1	Atom-2	Interatomic distance (Å)	Clash overlap (Å)
1:C:2112:THR:HG22	1:D:3112:THR:HG22	1.80	0.61
1:A:139:THR:HG21	1:A:223:LYS:NZ	2.15	0.61
1:C:2120:LEU:HD22	1:C:2121:LEU:HG	1.81	0.61
1:D:3107:PRO:O	1:D:3108:ILE:HG23	1.99	0.61
1:D:3289:LYS:HD2	1:D:3289:LYS:N	2.14	0.61
1:D:3045:HIS:CD2	1:D:3086:ASN:HD22	2.18	0.61
1:A:187:HIS:HA	2:E:1:NAG:H82	1.81	0.61
1:A:312:LEU:HD23	1:A:327:LEU:HD12	1.80	0.61
1:A:135:LEU:HD13	1:A:223:LYS:CG	2.30	0.61
1:D:3158:LEU:HD23	1:D:3172:ILE:HD12	1.81	0.61
1:D:3322:ARG:NH2	1:D:3326:LEU:HD21	2.16	0.61
1:D:3127:ASN:H	1:D:3127:ASN:ND2	1.99	0.61
1:B:1340:THR:HG23	1:B:1341:THR:H	1.65	0.60
1:C:2130:ARG:NH1	1:C:2221:GLU:OE1	2.34	0.60
1:D:3169:LEU:C	8:D:4122:HOH:O	2.39	0.60
1:B:1196:ASP:HB2	8:B:4046:HOH:O	2.00	0.60
1:C:2061:ASN:N	1:C:2061:ASN:HD22	1.99	0.60
1:D:3282:LEU:N	1:D:3282:LEU:HD23	2.16	0.60
1:A:225:ARG:HA	1:A:331:VAL:O	2.00	0.60
1:D:3106:GLN:HB2	1:D:3107:PRO:HD2	1.83	0.60
1:A:108:PRO:C	1:A:109:ILE:HD12	2.22	0.60
1:C:2018:ASP:OD2	1:C:2175:LYS:HD3	2.01	0.60
1:D:3010:ARG:HD2	1:D:3257:ASP:HB3	1.84	0.60
1:C:2328:GLY:N	1:C:2329:PRO:HD2	2.17	0.59
1:A:114:VAL:HG13	1:A:115:PRO:HD2	1.84	0.59
1:A:155:PHE:HE1	1:A:199:THR:HG22	1.65	0.59
1:B:1214:GLY:O	1:B:1215:ILE:HB	2.01	0.59
1:A:135:LEU:HD13	1:A:223:LYS:HG2	1.84	0.59
1:A:11:ARG:HD2	4:A:6000:2BF:O3P	2.02	0.59
1:D:3176:VAL:O	1:D:3179:PRO:HD2	2.02	0.59
1:A:245:ILE:HD12	1:A:246:PRO:HD2	1.84	0.59
1:D:3069:VAL:HG13	1:D:3250:LEU:HB3	1.84	0.59
1:A:10:PHE:CE1	1:A:255:SER:HA	2.38	0.59
1:A:56:ARG:HG2	1:A:57:TYR:CE2	2.37	0.59
1:C:2239:LYS:O	1:C:2243:GLN:HG3	2.02	0.59
1:D:3070:TYR:HB2	1:D:3248:LYS:HE2	1.84	0.59
1:D:3179:PRO:O	1:D:3183:GLU:HG2	2.02	0.59
1:A:175:SER:O	1:A:180:PRO:HD3	2.03	0.59
1:D:3142:GLU:O	1:D:3146:LYS:HD3	2.02	0.59
1:D:3334:ASP:O	1:D:3338:GLU:HG3	2.03	0.59
7:D:5009:NAG:HO1	7:D:5009:NAG:C7	2.13	0.59

Continued on next page...

Continued from previous page...

Atom-1	Atom-2	Interatomic distance (Å)	Clash overlap (Å)
1:B:1239:ARG:HD2	1:B:1246:TYR:CE2	2.38	0.59
1:C:2098:ILE:HG21	1:C:2104:LEU:CD2	2.32	0.59
1:C:2100:ASN:ND2	1:C:2103:LEU:HB3	2.18	0.59
1:C:2161:LEU:HD13	1:C:2193:TRP:CB	2.33	0.59
1:C:2232:ASN:ND2	1:C:2331:ILE:HG21	2.18	0.59
1:D:3167:GLN:O	1:D:3167:GLN:HG2	2.02	0.59
1:D:3224:ARG:O	1:D:3332:PRO:HD3	2.02	0.59
1:C:2048:LEU:O	1:C:2052:ILE:HG13	2.02	0.59
1:C:2056:TYR:O	1:C:2059:PHE:N	2.36	0.59
1:C:2214:TYR:HB2	1:C:2265:MET:HG3	1.85	0.58
1:D:3340:MET:CE	1:D:3341:THR:HG22	2.33	0.58
1:B:1060:LEU:C	1:B:1062:GLU:H	2.06	0.58
1:B:1139:LYS:O	1:B:1140:SER:C	2.41	0.58
1:C:2169:LEU:HD21	1:C:2205:LEU:HB3	1.84	0.58
1:A:170:LEU:HB3	1:A:210:SER:HB2	1.85	0.58
1:B:1340:THR:HG23	1:B:1341:THR:N	2.19	0.58
1:C:2071:ILE:HG13	1:C:2252:MET:HB2	1.83	0.58
1:C:2089:ALA:O	1:C:2092:PRO:HD3	2.04	0.58
1:C:2041:GLY:HA2	1:C:2044:GLN:OE1	2.03	0.58
1:C:2151:TYR:CG	1:C:2205:LEU:HD21	2.38	0.58
1:A:322:GLU:OE1	1:A:322:GLU:HA	2.03	0.58
1:B:1186:ASN:ND2	6:B:5004:NDG:C1	2.67	0.58
1:B:1309:MET:HE2	1:B:1315:PRO:HG3	1.86	0.58
1:D:3127:ASN:HD22	1:D:3127:ASN:N	1.99	0.58
1:D:3172:ILE:O	1:D:3176:VAL:HB	2.03	0.58
1:A:11:ARG:HD3	1:A:258:ASP:HB3	1.86	0.58
1:A:302:GLU:OE1	2:F:1:NAG:O1	2.21	0.58
1:C:2072:ARG:HD3	1:C:2121:LEU:HD12	1.86	0.58
1:C:2217:HIS:CD2	1:C:2218:LYS:HD3	2.38	0.58
1:A:268:LEU:O	1:A:269:ASP:HB2	2.03	0.57
1:C:2048:LEU:HD13	1:C:2052:ILE:HD11	1.86	0.57
1:D:3115:LEU:HD22	1:D:3122:TYR:CD1	2.39	0.57
1:B:1163:LEU:HD21	1:B:1174:LYS:HD3	1.86	0.57
1:C:2314:CYS:HB2	1:C:2326:LEU:CD1	2.34	0.57
1:D:3072:ARG:O	1:D:3253:TYR:HA	2.04	0.57
1:C:2181:TYR:O	1:C:2185:VAL:HG23	2.04	0.57
1:D:3004:PHE:CZ	1:D:3251:ILE:HD12	2.39	0.57
1:D:3186:HIS:HA	7:D:5009:NAG:C8	2.35	0.57
1:C:2232:ASN:HD22	1:C:2331:ILE:HG21	1.70	0.57
1:C:2310:MET:CE	1:C:2316:PRO:HD3	2.35	0.57
1:D:3045:HIS:HD2	1:D:3086:ASN:ND2	2.02	0.57

Continued on next page...

Continued from previous page...

Atom-1	Atom-2	Interatomic distance (Å)	Clash overlap (Å)
1:C:2161:LEU:HD13	1:C:2193:TRP:HB2	1.86	0.57
1:D:3148:LEU:HD21	1:D:3167:GLN:HE21	1.69	0.57
1:A:268:LEU:HD22	1:A:312:LEU:HD11	1.86	0.57
1:C:2065:LYS:O	1:C:2068:GLN:N	2.38	0.57
1:A:127:ARG:CG	1:A:127:ARG:HH11	2.18	0.57
1:D:3314:CYS:HB2	1:D:3326:LEU:CD1	2.34	0.57
1:A:177:VAL:C	1:A:180:PRO:HD2	2.24	0.57
1:C:2166:GLY:O	1:C:2168:ASP:N	2.38	0.57
1:C:2007:LEU:CD1	1:C:2052:ILE:HD13	2.35	0.57
1:C:2053:ARG:NH1	1:C:2092:PRO:HG3	2.20	0.57
1:C:2183:GLU:HB3	1:C:2190:LEU:HD21	1.87	0.57
1:D:3169:LEU:HD11	1:D:3208:LEU:HD23	1.87	0.57
1:A:66:LYS:HD3	1:B:1032:GLN:NE2	2.10	0.56
1:B:1010:ARG:O	1:B:1277:ALA:HA	2.04	0.56
1:B:1189:LEU:HG	1:B:1190:PRO:HD2	1.87	0.56
1:D:3065:LYS:O	1:D:3067:GLU:N	2.38	0.56
1:D:3172:ILE:CB	8:D:4122:HOH:O	2.53	0.56
1:A:120:GLN:HB3	5:A:7000:1PE:H152	1.86	0.56
1:A:181:LEU:CD2	1:A:191:LEU:HD22	2.33	0.56
1:B:1243:ILE:HG22	1:B:1244:PRO:O	2.05	0.56
1:C:2026:LYS:HE2	1:C:2026:LYS:HA	1.87	0.56
8:A:4117:HOH:O	2:E:1:NAG:H81	2.06	0.56
1:A:277:PRO:HD2	1:A:280:SER:HB3	1.86	0.56
1:A:334:GLN:NE2	1:A:334:GLN:HA	2.20	0.56
1:D:3107:PRO:C	1:D:3108:ILE:HG12	2.25	0.56
1:C:2301:GLU:OE2	1:C:2304:HIS:HD2	1.88	0.56
1:A:159:LEU:C	1:A:159:LEU:HD13	2.26	0.56
1:B:1080:LEU:O	1:B:1084:MET:HG3	2.06	0.56
1:D:3157:THR:O	1:D:3161:LEU:HG	2.06	0.56
1:D:3055:ARG:HG2	1:D:3056:TYR:CD2	2.41	0.56
1:A:312:LEU:HD23	1:A:327:LEU:CD1	2.35	0.55
1:B:1327:GLY:N	1:B:1328:PRO:HD2	2.21	0.55
1:C:2274:LEU:HG	8:C:4100:HOH:O	2.06	0.55
1:C:2310:MET:CE	1:C:2315:SER:HA	2.35	0.55
1:A:11:ARG:CD	1:A:258:ASP:HB3	2.36	0.55
1:B:1146:ARG:O	1:B:1149:PRO:HD2	2.07	0.55
1:B:1210:LEU:HD13	1:B:1215:ILE:HG12	1.88	0.55
1:B:1177:ASP:HB3	1:B:1178:PRO:HD3	1.89	0.55
1:C:2010:ARG:HD2	1:C:2257:ASP:N	2.21	0.55
1:C:2097:SER:HB3	1:C:2106:GLN:NE2	2.21	0.55
1:D:3060:LEU:O	1:D:3062:GLU:N	2.40	0.55

Continued on next page...

Continued from previous page...

Atom-1	Atom-2	Interatomic distance (Å)	Clash overlap (Å)
1:A:204:ARG:O	1:A:208:GLU:HG3	2.06	0.55
1:C:2104:LEU:O	1:C:2105:TRP:HB3	2.05	0.55
1:D:3230:LEU:HD23	1:D:3263:LEU:HB2	1.89	0.55
1:C:2211:LEU:HD13	1:C:2211:LEU:O	2.07	0.55
1:D:3002:LEU:HD23	1:D:3059:PHE:CG	2.41	0.55
1:A:304:GLN:HG3	1:A:305:HIS:CE1	2.42	0.55
1:B:1180:TYR:O	1:B:1184:VAL:HG23	2.07	0.55
1:C:2288:GLU:CG	1:C:2289:LYS:N	2.69	0.55
1:A:150:HIS:C	1:A:152:TYR:H	2.09	0.54
1:D:3178:ASP:HB3	1:D:3179:PRO:HD3	1.87	0.54
1:B:1169:PHE:CD1	5:B:7005:1PE:H222	2.41	0.54
1:A:107:GLN:HG3	1:A:109:ILE:HD11	1.89	0.54
1:A:113:THR:HG22	1:B:1112:THR:HG22	1.90	0.54
1:A:139:THR:CG2	1:A:218:HIS:HB3	2.36	0.54
1:C:2010:ARG:O	1:C:2278:ALA:HA	2.08	0.54
1:A:213:SER:HB3	1:A:217:ILE:HD12	1.88	0.54
1:B:1014:ARG:HH22	1:B:1177:ASP:CG	2.10	0.54
1:D:3186:HIS:HA	7:D:5009:NAG:H81	1.88	0.54
1:A:143:GLU:O	1:A:147:LYS:HB2	2.07	0.54
1:A:281:CYS:SG	1:A:283:LEU:HD22	2.48	0.54
1:B:1010:ARG:O	1:B:1045:HIS:HE1	1.90	0.54
1:D:3087:LEU:CB	1:D:3108:ILE:HD12	2.34	0.54
1:B:1306:TYR:CZ	2:G:1:NAG:O1	2.60	0.54
1:D:3167:GLN:HB2	8:D:4124:HOH:O	2.06	0.54
1:A:152:TYR:O	1:A:155:PHE:N	2.40	0.54
1:B:1306:TYR:CE1	2:G:1:NAG:O1	2.59	0.54
1:D:3287:PHE:CZ	1:D:3290:GLY:HA2	2.42	0.54
1:B:1229:LEU:O	1:B:1232:GLU:HB3	2.08	0.54
1:D:3151:TYR:O	1:D:3153:ASP:N	2.42	0.54
1:D:3199:MET:O	1:D:3202:LEU:HB2	2.08	0.54
1:A:233:ASN:HB2	1:A:332:ILE:HG23	1.90	0.53
1:A:54:ARG:HG3	1:A:91:LEU:O	2.08	0.53
1:C:2127:ASN:HD22	1:C:2127:ASN:H	1.56	0.53
1:D:3020:PHE:CE2	1:D:3023:ASP:HB2	2.44	0.53
1:B:1295:MET:HG3	8:B:4065:HOH:O	2.09	0.53
1:A:245:ILE:HD12	1:A:246:PRO:N	2.23	0.53
1:C:2065:LYS:HG2	1:C:2067:GLU:HG2	1.90	0.53
1:C:2130:ARG:HG2	1:C:2225:LEU:HD11	1.90	0.53
1:D:3065:LYS:O	1:D:3068:GLN:N	2.35	0.53
1:D:3230:LEU:CD2	1:D:3263:LEU:HD22	2.38	0.53
1:A:137:SER:O	1:A:140:LEU:HB2	2.08	0.53

Continued on next page...

Continued from previous page...

Atom-1	Atom-2	Interatomic distance (Å)	Clash overlap (Å)
1:D:3022:THR:HG22	1:D:3022:THR:O	2.07	0.53
1:D:3128:CYS:HB2	1:D:3335:TRP:CZ2	2.42	0.53
1:A:213:SER:HA	1:A:217:ILE:HD12	1.91	0.53
1:B:1299:ASN:HD21	2:G:1:NAG:C2	2.21	0.53
1:A:58:ARG:HG2	1:A:58:ARG:NH1	2.23	0.53
1:A:179:ASP:HB3	1:A:180:PRO:HD3	1.89	0.53
1:B:1275:PRO:HG2	1:B:1299:ASN:HB2	1.90	0.53
1:C:2133:GLU:O	1:C:2137:GLU:HG3	2.08	0.53
1:B:1298:ARG:NH1	1:B:1301:THR:HG22	2.23	0.53
1:A:316:SER:HB2	1:A:317:PRO:CD	2.37	0.52
1:C:2056:TYR:O	1:C:2057:ARG:C	2.48	0.52
1:C:2130:ARG:HH11	1:C:2221:GLU:CD	2.12	0.52
1:A:274:LEU:HD12	2:F:1:NAG:H2	1.91	0.52
1:D:3322:ARG:HH11	1:D:3322:ARG:CG	2.22	0.52
1:A:50:GLY:O	1:A:53:ILE:HG23	2.09	0.52
1:D:3047:GLU:C	1:D:3047:GLU:OE2	2.48	0.52
1:A:127:ARG:HH11	1:A:127:ARG:CB	2.22	0.52
1:C:2010:ARG:O	1:C:2045:HIS:HE1	1.92	0.52
1:C:2151:TYR:O	1:C:2155:ILE:HG13	2.09	0.52
7:D:5009:NAG:O1	7:D:5009:NAG:C7	2.56	0.52
1:D:3045:HIS:ND1	1:D:3082:SER:HB3	2.24	0.52
1:D:3060:LEU:O	1:D:3062:GLU:OE2	2.27	0.52
1:A:6:VAL:HG12	1:A:7:THR:N	2.24	0.52
1:A:139:THR:HG21	1:A:223:LYS:HZ1	1.74	0.52
1:B:1056:TYR:CB	1:B:1060:LEU:HD23	2.40	0.52
1:B:1216:HIS:O	1:B:1221:LYS:HE3	2.10	0.52
1:A:152:TYR:O	1:A:154:ASP:N	2.43	0.52
1:B:1011:HIS:CE1	1:B:1078:ARG:HD2	2.45	0.52
1:B:1112:THR:OG1	1:B:1113:VAL:N	2.43	0.52
1:C:2074:THR:O	1:C:2076:VAL:N	2.38	0.52
1:C:2090:LEU:HD22	1:C:2091:PHE:CZ	2.45	0.52
1:A:11:ARG:O	1:A:46:HIS:HE1	1.93	0.52
1:D:3046:TYR:CD1	1:D:3089:ALA:HB2	2.44	0.52
1:D:3193:TRP:O	1:D:3195:THR:HG23	2.10	0.52
1:A:106:TRP:HB2	1:B:1103:LEU:HD11	1.92	0.52
1:B:1007:LEU:HD13	1:B:1052:ILE:CD1	2.32	0.52
1:A:68:GLU:H	1:A:68:GLU:CD	2.12	0.52
1:A:132:PHE:O	1:A:133:GLN:C	2.48	0.52
1:B:1138:LEU:N	1:B:1138:LEU:HD22	2.25	0.52
1:B:1244:PRO:O	1:B:1246:TYR:N	2.43	0.52
1:A:37:GLN:HE21	1:A:37:GLN:N	2.09	0.51

Continued on next page...

Continued from previous page...

Atom-1	Atom-2	Interatomic distance (Å)	Clash overlap (Å)
1:D:3025:ILE:HD12	1:D:3025:ILE:N	2.21	0.51
1:A:302:GLU:OE2	1:A:305:HIS:HD2	1.92	0.51
1:C:2016:PRO:HG2	1:C:2034:PHE:CE2	2.46	0.51
1:C:2169:LEU:CD2	1:C:2205:LEU:HB3	2.40	0.51
1:B:1000:LYS:HB2	1:B:1287:GLU:OE1	2.10	0.51
1:C:2098:ILE:HG22	1:C:2099:TRP:N	2.26	0.51
1:D:3090:LEU:HD13	1:D:3091:PHE:CE1	2.45	0.51
1:A:100:TRP:HA	8:A:4034:HOH:O	2.10	0.51
1:D:3068:GLN:HE21	1:D:3249:LYS:HE3	1.75	0.51
1:C:2000:LYS:HG3	1:C:2286:TYR:HB3	1.93	0.51
1:C:2056:TYR:HB3	1:C:2059:PHE:HB3	1.93	0.51
1:C:2098:ILE:O	1:C:2099:TRP:CB	2.59	0.51
1:D:3212:SER:HA	1:D:3216:ILE:HG13	1.91	0.51
1:A:150:HIS:O	1:A:152:TYR:N	2.44	0.51
2:H:1:NAG:H61	2:H:2:NAG:C2	2.37	0.51
1:A:127:ARG:HE	5:A:7004:1PE:H262	1.76	0.51
1:B:1126:ARG:NH1	1:B:1126:ARG:HG2	2.26	0.51
1:C:2061:ASN:HD22	1:C:2061:ASN:H	1.59	0.51
1:A:28:GLU:HA	1:A:35:PHE:CE2	2.46	0.50
1:B:1100:ASN:ND2	1:B:1103:LEU:HB3	2.25	0.50
1:B:1128:CYS:O	1:B:1131:GLN:HG2	2.11	0.50
1:B:1144:GLN:HA	1:B:1144:GLN:NE2	2.26	0.50
1:D:3040:LEU:O	1:D:3043:GLU:HB2	2.11	0.50
1:D:3163:GLY:O	1:D:3164:LEU:HD23	2.10	0.50
1:A:49:LEU:HD13	1:A:87:ASN:ND2	2.23	0.50
1:A:159:LEU:HD13	1:A:159:LEU:O	2.10	0.50
1:A:287:TYR:O	1:A:293:TYR:HA	2.11	0.50
1:C:2005:VAL:HG22	1:C:2250:LEU:CD1	2.41	0.50
1:C:2266:ALA:O	1:C:2330:VAL:HG11	2.12	0.50
1:D:3235:LEU:HD11	1:D:3324:ALA:HB2	1.93	0.50
1:B:1145:LYS:HA	1:B:1145:LYS:CE	2.21	0.50
1:C:2126:ARG:HG3	5:C:7006:1PE:H122	1.94	0.50
1:D:3056:TYR:HB3	1:D:3059:PHE:HB3	1.93	0.50
1:D:3071:ILE:HG22	1:D:3110:VAL:HG13	1.93	0.50
1:A:155:PHE:CE1	1:A:199:THR:HG22	2.45	0.50
1:D:3181:TYR:O	1:D:3184:SER:HB3	2.11	0.50
1:A:236:LEU:O	1:A:240:LYS:HG2	2.12	0.50
1:B:1124:PRO:HD2	5:B:7005:1PE:H131	1.93	0.50
1:B:1184:VAL:O	6:B:5004:NDG:C8	2.60	0.50
1:C:2013:ASP:N	1:C:2044:GLN:OE1	2.37	0.50
1:B:1163:LEU:HD11	1:B:1174:LYS:HB3	1.94	0.50

Continued on next page...

Continued from previous page...

Atom-1	Atom-2	Interatomic distance (Å)	Clash overlap (Å)
1:C:2017:ILE:HD11	4:C:6002:2BF:O1P	2.12	0.50
1:A:40:GLN:HG2	1:B:1099:TRP:HB3	1.92	0.49
1:C:2070:TYR:C	1:C:2071:ILE:HD12	2.33	0.49
1:D:3098:ILE:HG23	1:D:3104:LEU:HD21	1.94	0.49
1:A:57:TYR:HB3	1:A:61:LEU:HD13	1.93	0.49
1:B:1210:LEU:CD1	1:B:1215:ILE:HG12	2.43	0.49
1:A:114:VAL:CG1	1:A:115:PRO:HD2	2.41	0.49
1:D:3062:GLU:O	1:D:3064:TYR:N	2.45	0.49
1:B:1060:LEU:N	1:B:1060:LEU:HD22	2.27	0.49
1:D:3016:PRO:HG2	1:D:3034:PHE:CE2	2.46	0.49
1:D:3322:ARG:HG2	1:D:3322:ARG:NH1	2.24	0.49
1:A:6:VAL:CG1	1:A:7:THR:N	2.75	0.49
1:A:116:LEU:HD22	1:A:123:TYR:CE1	2.47	0.49
1:B:1002:LEU:HD13	1:B:1285:TYR:CE2	2.48	0.49
1:C:2048:LEU:HD23	1:C:2299:ARG:NH2	2.28	0.49
1:C:2096:VAL:HG22	1:C:2096:VAL:O	2.13	0.49
1:D:3070:TYR:C	1:D:3071:ILE:HD12	2.33	0.49
1:A:109:ILE:HD12	1:A:109:ILE:N	2.27	0.49
1:C:2071:ILE:HG12	1:C:2087:LEU:HD21	1.95	0.49
1:C:2215:GLY:O	1:C:2216:ILE:HB	2.13	0.49
1:B:1070:TYR:HB2	1:B:1247:LYS:HE2	1.95	0.49
1:C:2009:PHE:CE1	1:C:2254:SER:HA	2.47	0.49
1:D:3217:HIS:O	1:D:3222:LYS:HE3	2.13	0.49
1:A:172:GLY:O	1:A:176:LYS:HB2	2.13	0.49
1:B:1070:TYR:CE1	1:B:1111:HIS:CD2	3.01	0.49
1:B:1163:LEU:HD11	1:B:1174:LYS:HD3	1.94	0.49
1:B:1256:ASP:OD2	4:B:6001:2BF:H7	2.13	0.49
1:A:124:LEU:HB3	1:A:125:PRO:HA	1.95	0.48
1:B:1171:ILE:O	1:B:1175:VAL:HB	2.13	0.48
1:B:1194:THR:O	1:B:1197:THR:N	2.46	0.48
1:C:2022:THR:HG23	1:C:2162:SER:O	2.13	0.48
1:C:2071:ILE:HD12	1:C:2071:ILE:N	2.28	0.48
1:A:125:PRO:HD2	5:A:7004:1PE:H131	1.95	0.48
1:C:2061:ASN:H	1:C:2061:ASN:ND2	2.11	0.48
1:B:1007:LEU:HD23	1:B:1281:LEU:HB3	1.95	0.48
1:C:2083:ALA:O	1:C:2087:LEU:HG	2.13	0.48
1:D:3257:ASP:OD2	1:D:3258:THR:N	2.46	0.48
1:A:213:SER:CA	1:A:217:ILE:HD12	2.44	0.48
1:D:3159:GLY:HA3	1:D:3164:LEU:O	2.14	0.48
1:D:3289:LYS:O	1:D:3289:LYS:HG2	2.14	0.48
1:A:165:LEU:HD11	1:A:176:LYS:HD2	1.95	0.48

Continued on next page...

Continued from previous page...

Atom-1	Atom-2	Interatomic distance (Å)	Clash overlap (Å)
1:B:1281:LEU:N	1:B:1281:LEU:CD2	2.77	0.48
1:C:2235:LEU:C	1:C:2235:LEU:HD13	2.34	0.48
1:D:3155:ILE:HG22	8:D:4124:HOH:O	2.14	0.48
1:D:3286:TYR:O	1:D:3292:TYR:HA	2.14	0.48
1:B:1016:PRO:HG2	1:B:1034:PHE:CE2	2.49	0.48
1:B:1093:PRO:HB3	1:B:1106:GLN:HB3	1.95	0.48
1:B:1157:LEU:HD23	1:B:1171:ILE:HD12	1.96	0.48
1:C:2104:LEU:O	1:C:2105:TRP:CB	2.61	0.48
1:B:1238:LYS:HE3	8:B:4058:HOH:O	2.14	0.48
1:C:2127:ASN:H	1:C:2127:ASN:ND2	2.11	0.48
1:C:2128:CYS:SG	1:C:2225:LEU:HD13	2.53	0.48
1:A:97:VAL:O	1:B:1039:GLN:NE2	2.47	0.48
1:B:1036:GLN:HE22	1:B:1077:ASP:HB2	1.79	0.48
1:D:3322:ARG:CG	1:D:3322:ARG:NH1	2.77	0.48
1:A:19:ASP:OD2	1:A:176:LYS:HG2	2.14	0.48
1:A:148:ARG:C	1:A:151:PRO:HD2	2.34	0.48
1:B:1019:THR:OG1	1:B:1020:PHE:N	2.46	0.48
1:D:3148:LEU:HD11	1:D:3155:ILE:CD1	2.44	0.48
1:C:2105:TRP:CZ2	1:C:2107:PRO:HB3	2.49	0.47
1:D:3270:TYR:CE2	1:D:3272:GLY:HA2	2.48	0.47
1:A:74:SER:CB	1:A:255:SER:HB3	2.42	0.47
1:A:135:LEU:HD13	1:A:223:LYS:HG3	1.96	0.47
1:B:1087:LEU:HD13	1:B:1108:ILE:CG2	2.44	0.47
1:D:3123:LEU:N	1:D:3123:LEU:HD12	2.29	0.47
1:A:64:SER:HB2	1:A:95:GLU:OE2	2.15	0.47
1:B:1210:LEU:HD13	1:B:1210:LEU:C	2.34	0.47
1:D:3055:ARG:NH2	1:D:3284:GLU:OE1	2.45	0.47
1:D:3115:LEU:HD22	1:D:3122:TYR:CZ	2.49	0.47
1:A:113:THR:OG1	1:A:114:VAL:N	2.47	0.47
1:C:2334:ASP:O	1:C:2338:GLU:HG3	2.14	0.47
1:D:3025:ILE:H	1:D:3025:ILE:CD1	2.23	0.47
1:D:3090:LEU:HD22	1:D:3091:PHE:CE2	2.49	0.47
1:D:3093:PRO:HB2	1:D:3098:ILE:HG12	1.95	0.47
1:A:88:LEU:HD13	1:A:109:ILE:CG2	2.45	0.47
1:A:152:TYR:O	1:A:153:LYS:C	2.53	0.47
1:B:1200:LYS:HE2	8:B:4039:HOH:O	2.14	0.47
1:B:1239:ARG:HB3	1:B:1246:TYR:CE2	2.49	0.47
1:A:328:VAL:O	1:A:331:VAL:HG22	2.15	0.47
1:B:1006:THR:HG22	1:B:1006:THR:O	2.15	0.47
1:D:3048:LEU:HD13	1:D:3086:ASN:HD21	1.79	0.47
1:D:3177:TYR:HB2	1:D:3202:LEU:HB3	1.95	0.47

Continued on next page...

Continued from previous page...

Atom-1	Atom-2	Interatomic distance (Å)	Clash overlap (Å)
1:D:3337:THR:O	1:D:3340:MET:HB2	2.14	0.47
1:A:301:ASN:O	1:A:302:GLU:HG3	2.14	0.47
1:C:2337:THR:HA	1:C:2340:MET:CE	2.45	0.47
1:D:3193:TRP:O	1:D:3195:THR:N	2.40	0.47
1:D:3232:ASN:HB2	1:D:3331:ILE:CG2	2.42	0.47
1:D:3239:LYS:O	1:D:3242:THR:HG22	2.14	0.47
1:A:115:PRO:HD3	1:B:1113:VAL:HG22	1.97	0.47
1:A:150:HIS:HB3	1:A:151:PRO:CD	2.35	0.47
1:C:2010:ARG:NH2	4:C:6002:2BF:O2P	2.46	0.47
1:B:1126:ARG:HG2	1:B:1126:ARG:HH11	1.80	0.46
1:B:1163:LEU:CD2	1:B:1174:LYS:HD3	2.45	0.46
1:C:2061:ASN:N	1:C:2061:ASN:ND2	2.63	0.46
1:C:2120:LEU:HD11	1:C:2233:GLU:HG2	1.96	0.46
1:D:3071:ILE:HD12	1:D:3071:ILE:N	2.30	0.46
1:D:3298:TYR:HB2	1:D:3309:LEU:HD11	1.97	0.46
1:A:24:ASP:OD1	1:A:26:ILE:N	2.47	0.46
1:A:51:GLU:HG3	1:A:90:ALA:HB1	1.97	0.46
1:C:2145:GLN:HE21	1:C:2145:GLN:CA	2.11	0.46
1:D:3071:ILE:CG2	1:D:3110:VAL:HG13	2.45	0.46
1:C:2006:THR:O	1:C:2007:LEU:HD23	2.15	0.46
1:C:2123:LEU:HD22	1:C:2259:THR:HA	1.97	0.46
1:C:2224:ARG:HG3	1:C:2224:ARG:HH11	1.80	0.46
1:C:2099:TRP:HH2	1:D:3046:TYR:CD1	2.33	0.46
1:C:2288:GLU:OE2	1:C:2288:GLU:HA	2.16	0.46
1:D:3045:HIS:HD2	1:D:3086:ASN:HD22	1.54	0.46
1:A:245:ILE:HD12	1:A:246:PRO:CG	2.45	0.46
1:D:3046:TYR:CE1	1:D:3089:ALA:HB2	2.49	0.46
1:C:2310:MET:HE3	1:C:2316:PRO:HD3	1.98	0.46
1:A:88:LEU:HD13	1:A:109:ILE:HB	1.98	0.46
1:A:200:MET:O	1:A:203:LEU:HB2	2.16	0.46
1:A:246:PRO:HG2	1:A:247:SER:H	1.80	0.46
1:B:1056:TYR:HB3	1:B:1060:LEU:CD2	2.44	0.46
1:C:2124:PRO:HG3	1:C:2213:LEU:HD21	1.96	0.46
1:C:2127:ASN:HD21	5:C:7002:1PE:H242	1.80	0.46
1:D:3235:LEU:HD21	1:D:3324:ALA:HB1	1.98	0.46
2:E:1:NAG:C6	2:E:2:NAG:H82	2.32	0.46
1:A:121:LEU:HD21	1:A:234:GLU:HG2	1.97	0.46
1:A:127:ARG:NH1	1:A:127:ARG:HG2	2.30	0.46
1:A:178:TYR:CE1	1:A:204:ARG:HB2	2.51	0.46
1:C:2000:LYS:HE2	1:C:2286:TYR:CE2	2.51	0.46
1:C:2235:LEU:HD13	1:C:2235:LEU:O	2.15	0.46

Continued on next page...

Continued from previous page...

Atom-1	Atom-2	Interatomic distance (Å)	Clash overlap (Å)
1:D:3020:PHE:CD2	1:D:3023:ASP:HB2	2.51	0.46
1:D:3068:GLN:HE21	1:D:3249:LYS:CE	2.29	0.46
1:D:3190:LEU:HD12	1:D:3190:LEU:N	2.30	0.46
1:A:241:ARG:HD2	1:A:248:TYR:OH	2.16	0.46
1:B:1002:LEU:HD23	1:B:1059:PHE:CG	2.52	0.46
1:C:2126:ARG:NH1	1:C:2132:GLN:OE1	2.47	0.46
1:C:2270:TYR:CE2	1:C:2272:GLY:HA2	2.51	0.46
1:D:3002:LEU:HD13	1:D:3286:TYR:CZ	2.51	0.46
1:D:3190:LEU:HB3	1:D:3191:PRO:HD2	1.98	0.46
1:A:212:LEU:HD12	1:A:217:ILE:CG1	2.42	0.45
1:A:308:TYR:CE2	2:F:1:NAG:H5	2.51	0.45
1:C:2002:LEU:HD23	1:C:2059:PHE:CG	2.51	0.45
1:D:3032:GLN:HB3	1:D:3036:GLN:CG	2.38	0.45
1:D:3076:VAL:O	1:D:3080:LEU:HG	2.16	0.45
1:B:1090:LEU:HD13	1:B:1091:PHE:CE1	2.51	0.45
1:C:2055:ARG:NH2	1:C:2284:GLU:OE1	2.50	0.45
1:C:2070:TYR:HB3	1:C:2251:ILE:HG12	1.98	0.45
1:D:3149:HIS:O	1:D:3151:TYR:N	2.49	0.45
1:C:2288:GLU:CG	1:C:2289:LYS:H	2.14	0.45
1:C:2315:SER:HB2	1:C:2316:PRO:CD	2.47	0.45
1:A:7:THR:HG21	1:A:235:ILE:HG12	1.98	0.45
1:A:12:HIS:NE2	4:A:6000:2BF:P	2.90	0.45
1:D:3057:ARG:HG3	1:D:3058:LYS:N	2.32	0.45
1:D:3060:LEU:HD11	1:D:3250:LEU:HD22	1.99	0.45
1:A:5:PHE:CZ	1:A:238:HIS:HB3	2.51	0.45
1:A:64:SER:HB2	1:A:95:GLU:CD	2.37	0.45
1:A:204:ARG:NH1	1:A:208:GLU:OE1	2.49	0.45
1:A:213:SER:CB	1:A:217:ILE:HD12	2.46	0.45
1:A:245:ILE:HD11	1:A:247:SER:O	2.16	0.45
1:B:1010:ARG:CD	1:B:1256:ASP:HB3	2.39	0.45
1:B:1065:LYS:HB3	1:B:1067:GLU:CD	2.37	0.45
1:C:2120:LEU:HD23	1:C:2120:LEU:C	2.37	0.45
1:D:3129:PRO:O	1:D:3132:GLN:HB2	2.16	0.45
1:B:1244:PRO:O	1:B:1245:SER:C	2.55	0.45
1:C:2107:PRO:O	1:D:3081:MET:HG2	2.16	0.45
1:D:3264:GLN:HE21	1:D:3270:TYR:HA	1.81	0.45
1:A:127:ARG:CG	1:A:127:ARG:NH1	2.76	0.45
1:A:315:CYS:HB2	1:A:327:LEU:CD1	2.46	0.45
1:C:2242:THR:HB	1:C:2292:TYR:CE1	2.52	0.45
1:D:3062:GLU:OE2	1:D:3068:GLN:NE2	2.43	0.45
1:D:3094:GLU:H	1:D:3097:SER:HB2	1.82	0.45

Continued on next page...

Continued from previous page...

Atom-1	Atom-2	Interatomic distance (Å)	Clash overlap (Å)
1:A:61:LEU:HD23	1:A:92:PHE:CE2	2.52	0.45
1:A:71:TYR:HB2	1:A:249:LYS:HE2	1.99	0.45
1:A:239:MET:O	1:A:243:THR:HG23	2.17	0.45
1:B:1145:LYS:HE3	1:B:1145:LYS:CA	2.21	0.45
1:C:2056:TYR:HB2	1:C:2060:LEU:HD23	1.99	0.45
1:C:2161:LEU:HD13	1:C:2193:TRP:CG	2.52	0.45
1:A:150:HIS:HA	1:A:153:LYS:HG3	1.99	0.44
1:A:301:ASN:OD1	2:F:1:NAG:O1	2.35	0.44
1:B:1186:ASN:HD21	6:B:5004:NDG:C2	2.29	0.44
1:D:3175:LYS:O	1:D:3179:PRO:HG2	2.18	0.44
1:A:107:GLN:HG3	1:A:109:ILE:CD1	2.48	0.44
1:A:288:PHE:CE1	1:A:291:GLY:HA2	2.53	0.44
1:D:3212:SER:HA	1:D:3216:ILE:CG1	2.46	0.44
1:A:301:ASN:C	1:A:302:GLU:HG3	2.37	0.44
1:B:1223:ARG:NH2	1:B:1331:PRO:HA	2.32	0.44
1:C:2013:ASP:OD1	1:C:2186:HIS:HE1	2.00	0.44
1:C:2115:LEU:HD13	1:C:2122:TYR:CE1	2.52	0.44
1:C:2337:THR:O	1:C:2339:CYS:N	2.50	0.44
1:D:3154:PHE:CD1	1:D:3201:LYS:HD2	2.52	0.44
1:D:3328:GLY:N	1:D:3329:PRO:HD2	2.33	0.44
1:A:49:LEU:HA	1:A:300:ARG:HH22	1.81	0.44
1:A:66:LYS:HG3	1:A:69:GLN:NE2	2.32	0.44
1:B:1134:GLU:O	1:B:1138:LEU:HD23	2.17	0.44
1:C:2184:SER:O	1:C:2185:VAL:C	2.55	0.44
1:D:3149:HIS:C	1:D:3151:TYR:H	2.21	0.44
1:D:3230:LEU:HD23	1:D:3263:LEU:HD22	1.99	0.44
1:A:40:GLN:OE1	1:B:1097:SER:HA	2.18	0.44
1:A:53:ILE:CD1	1:A:57:TYR:CD1	3.01	0.44
1:A:201:THR:O	1:A:205:GLU:HG3	2.18	0.44
1:B:1023:ASP:HA	1:B:1024:PRO:HD3	1.82	0.44
1:C:2093:PRO:HB2	1:C:2104:LEU:HB3	2.00	0.44
1:D:3169:LEU:HD21	1:D:3205:LEU:HD22	1.99	0.44
1:A:72:ILE:N	1:A:72:ILE:HD12	2.33	0.44
1:B:1214:GLY:HA3	1:B:1264:MET:HE1	2.00	0.44
1:C:2061:ASN:O	1:C:2062:GLU:HG3	2.18	0.44
1:A:49:LEU:HD22	1:A:53:ILE:HG22	2.00	0.44
1:A:82:MET:HA	1:A:85:MET:CE	2.45	0.44
1:A:142:SER:O	1:A:146:GLN:HG2	2.18	0.43
1:C:2303:GLN:HG3	1:C:2304:HIS:CD2	2.53	0.43
1:B:1165:GLY:C	1:B:1167:ASP:H	2.21	0.43
1:B:1318:PRO:HG2	1:B:1321:ARG:CB	2.49	0.43

Continued on next page...

Continued from previous page...

Atom-1	Atom-2	Interatomic distance (Å)	Clash overlap (Å)
1:C:2086:ASN:ND2	1:C:2252:MET:CE	2.81	0.43
1:C:2149:HIS:HB3	1:C:2150:PRO:CD	2.41	0.43
1:C:2310:MET:HE2	1:C:2315:SER:HA	1.99	0.43
1:D:3154:PHE:CZ	1:D:3201:LYS:HB2	2.53	0.43
1:D:3287:PHE:HA	1:D:3291:GLU:O	2.18	0.43
1:A:127:ARG:HH11	1:A:127:ARG:HB3	1.83	0.43
1:B:1321:ARG:NH1	1:B:1321:ARG:HG2	2.33	0.43
1:D:3094:GLU:O	1:D:3094:GLU:HG3	2.18	0.43
1:C:2190:LEU:HB3	1:C:2191:PRO:CD	2.40	0.43
1:C:2276:PRO:HD2	1:C:2279:SER:HB3	2.00	0.43
1:A:18:ILE:HG22	1:A:18:ILE:O	2.17	0.43
1:B:1075:ASP:HB2	1:B:1113:VAL:O	2.18	0.43
1:B:1175:VAL:C	1:B:1178:PRO:HD2	2.38	0.43
1:B:1326:VAL:O	1:B:1329:VAL:HG22	2.16	0.43
1:C:2224:ARG:HG3	1:C:2224:ARG:NH1	2.34	0.43
1:D:3160:LYS:HD2	1:D:3160:LYS:HA	1.89	0.43
1:A:177:VAL:O	1:A:180:PRO:HD2	2.19	0.43
1:B:1230:VAL:HG11	1:B:1326:VAL:CG2	2.48	0.43
1:C:2261:SER:O	1:C:2265:MET:HG2	2.19	0.43
1:D:3006:THR:HG21	1:D:3234:ILE:HG12	2.00	0.43
1:D:3062:GLU:HB2	1:D:3065:LYS:HD2	2.00	0.43
1:D:3121:LEU:HD11	1:D:3253:TYR:HD2	1.83	0.43
1:A:100:TRP:CE3	1:A:101:ASN:HB2	2.53	0.43
1:A:124:LEU:HD12	1:A:260:THR:HA	2.01	0.43
1:C:2169:LEU:HD23	1:C:2169:LEU:HA	1.82	0.43
1:C:2257:ASP:HB2	1:C:2275:PRO:HD2	2.01	0.43
1:D:3273:LEU:HD12	3:I:1:NAG:H2	2.01	0.43
1:B:1216:HIS:CE1	1:B:1217:LYS:HG3	2.53	0.43
1:C:2126:ARG:NH1	1:C:2126:ARG:HG2	2.34	0.43
1:D:3088:ALA:HA	1:D:3105:TRP:HE1	1.84	0.43
1:D:3240:ARG:HB3	1:D:3247:TYR:CE2	2.54	0.43
1:A:17:PRO:HG2	1:A:35:PHE:CE2	2.53	0.43
1:C:2130:ARG:HB3	1:C:2339:CYS:HA	2.01	0.43
1:C:2154:PHE:O	1:C:2158:LEU:HB2	2.19	0.43
1:A:245:ILE:HD12	1:A:246:PRO:HG2	2.00	0.43
1:D:3013:ASP:O	1:D:3037:LEU:HD12	2.19	0.43
1:A:17:PRO:HB3	1:A:180:PRO:HA	2.01	0.42
1:A:24:ASP:HA	1:A:25:PRO:HD3	1.93	0.42
1:A:178:TYR:HD1	1:A:203:LEU:HB3	1.84	0.42
1:A:218:HIS:CE1	1:A:219:LYS:HE3	2.54	0.42
1:B:1060:LEU:O	1:B:1062:GLU:N	2.51	0.42

Continued on next page...

Continued from previous page...

Atom-1	Atom-2	Interatomic distance (Å)	Clash overlap (Å)
1:B:1168:LEU:HD22	1:B:1204:LEU:HD22	2.01	0.42
1:C:2168:ASP:OD2	1:C:2171:GLY:N	2.43	0.42
1:C:2217:HIS:NE2	1:C:2218:LYS:HD3	2.33	0.42
1:D:3269:VAL:HB	1:D:3309:LEU:HD22	1.99	0.42
1:B:1038:THR:O	1:B:1042:MET:HG3	2.18	0.42
1:B:1138:LEU:N	1:B:1138:LEU:CD2	2.82	0.42
1:B:1115:LEU:HD22	1:B:1122:TYR:CD2	2.54	0.42
1:B:1184:VAL:O	6:B:5004:NDG:H8C3	2.19	0.42
1:B:1322:PHE:O	1:B:1326:VAL:HG12	2.19	0.42
1:C:2310:MET:HE1	1:C:2316:PRO:HD3	2.01	0.42
1:D:3045:HIS:CE1	1:D:3082:SER:HB3	2.54	0.42
1:D:3319:PRO:HG2	1:D:3322:ARG:HB3	2.01	0.42
1:B:1166:GLN:HE21	1:B:1166:GLN:HB2	1.67	0.42
1:B:1184:VAL:O	6:B:5004:NDG:H8C1	2.19	0.42
1:C:2013:ASP:HA	1:C:2277:TYR:CE1	2.55	0.42
1:C:2051:TYR:CE2	1:C:2299:ARG:HD2	2.54	0.42
1:D:3213:LEU:HD23	1:D:3214:TYR:CE1	2.54	0.42
1:B:1069:VAL:HG12	1:B:1070:TYR:N	2.35	0.42
1:C:2018:ASP:CG	1:C:2019:THR:H	2.23	0.42
1:C:2327:VAL:O	1:C:2327:VAL:HG12	2.19	0.42
1:D:3119:GLN:HA	1:D:3125:PHE:HE1	1.84	0.42
1:D:3169:LEU:HD23	1:D:3169:LEU:HA	1.89	0.42
1:A:311:MET:HG2	1:A:317:PRO:HD3	2.01	0.42
1:B:1068:GLN:O	1:B:1247:LYS:HG3	2.20	0.42
1:C:2027:GLU:HB2	1:C:2034:PHE:CE1	2.55	0.42
1:C:2301:GLU:OE1	2:H:1:NAG:H83	2.19	0.42
1:D:3208:LEU:O	1:D:3212:SER:HB3	2.20	0.42
1:A:232:VAL:HG11	1:A:328:VAL:CG2	2.50	0.42
1:A:323:ARG:HD2	1:A:323:ARG:HA	1.79	0.42
1:B:1216:HIS:CE1	1:B:1217:LYS:HE3	2.54	0.42
1:D:3167:GLN:HA	8:D:4127:HOH:O	2.19	0.42
1:A:216:GLY:O	1:A:217:ILE:HB	2.19	0.42
1:B:1063:SER:O	1:B:1064:TYR:O	2.38	0.42
1:B:1210:LEU:HD13	1:B:1210:LEU:O	2.20	0.42
1:B:1321:ARG:HG2	1:B:1321:ARG:HH11	1.85	0.42
1:C:2064:TYR:OH	1:C:2066:HIS:HB3	2.19	0.42
1:C:2090:LEU:HD22	1:C:2091:PHE:CE1	2.54	0.42
1:D:3230:LEU:HD21	1:D:3263:LEU:HD22	2.01	0.42
1:D:3065:LYS:C	1:D:3067:GLU:N	2.72	0.42
1:A:312:LEU:O	1:A:313:PRO:C	2.56	0.42
1:B:1023:ASP:OD2	1:B:1182:GLU:OE2	2.37	0.42

Continued on next page...

Continued from previous page...

Atom-1	Atom-2	Interatomic distance (Å)	Clash overlap (Å)
1:B:1056:TYR:OH	1:B:1283:GLU:OE1	2.29	0.42
1:B:1150:TYR:O	1:B:1154:ILE:HG23	2.20	0.42
1:B:1169:PHE:CE1	5:B:7005:1PE:H222	2.55	0.42
1:B:1089:ALA:O	1:B:1092:PRO:HD3	2.20	0.41
1:C:2191:PRO:HB2	1:C:2193:TRP:NE1	2.35	0.41
1:C:2319:PRO:HG2	1:C:2322:ARG:CB	2.48	0.41
1:A:215:TYR:CE1	1:A:263:GLY:HA2	2.54	0.41
1:C:2093:PRO:O	1:C:2094:GLU:HB3	2.20	0.41
1:C:2126:ARG:CG	1:C:2126:ARG:HH11	2.33	0.41
1:A:122:LEU:HD11	1:A:254:TYR:HD2	1.86	0.41
1:A:313:PRO:HD3	8:A:4028:HOH:O	2.18	0.41
1:B:1071:ILE:HG12	1:B:1087:LEU:HD21	2.02	0.41
1:B:1229:LEU:HD23	1:B:1262:LEU:HB2	2.03	0.41
1:D:3269:VAL:CG2	1:D:3309:LEU:HD13	2.50	0.41
1:A:8:LEU:CD2	1:A:283:LEU:HB3	2.43	0.41
1:A:122:LEU:O	1:A:124:LEU:N	2.53	0.41
1:A:245:ILE:HG13	1:A:248:TYR:HB2	2.01	0.41
1:C:2076:VAL:O	1:C:2077:ASP:C	2.58	0.41
1:C:2115:LEU:HD13	1:C:2122:TYR:CZ	2.55	0.41
1:C:2154:PHE:CE1	1:C:2158:LEU:HD23	2.55	0.41
1:C:2235:LEU:HD11	1:C:2239:LYS:HE3	2.01	0.41
1:D:3064:TYR:OH	1:D:3066:HIS:HB3	2.19	0.41
1:D:3093:PRO:O	1:D:3094:GLU:HB3	2.20	0.41
1:A:176:LYS:C	1:A:180:PRO:HG2	2.41	0.41
1:A:315:CYS:HB2	1:A:327:LEU:HD11	2.03	0.41
1:C:2307:TYR:HA	1:C:2308:PRO:HD3	1.85	0.41
1:C:2307:TYR:CD1	2:H:1:NAG:O1	2.67	0.41
1:D:3176:VAL:C	1:D:3179:PRO:HD2	2.40	0.41
1:A:176:LYS:O	1:A:180:PRO:HG2	2.20	0.41
1:B:1060:LEU:C	1:B:1062:GLU:N	2.73	0.41
1:B:1176:TYR:CE1	1:B:1202:ARG:HB2	2.55	0.41
1:C:2120:LEU:CD2	1:C:2121:LEU:HG	2.48	0.41
1:C:2169:LEU:HD11	1:C:2208:LEU:CD2	2.50	0.41
1:C:2039:GLN:O	1:C:2042:MET:HB2	2.20	0.41
1:C:2310:MET:HE3	1:C:2315:SER:HA	2.03	0.41
1:D:3119:GLN:HB3	5:D:7003:1PE:OH4	2.21	0.41
1:A:41:LEU:O	1:A:41:LEU:HD12	2.21	0.41
1:A:70:VAL:HG12	1:A:71:TYR:N	2.35	0.41
1:A:116:LEU:HD22	1:A:123:TYR:CD1	2.55	0.41
1:C:2023:ASP:HA	1:C:2024:PRO:HD3	1.96	0.41
1:D:3073:SER:OG	1:D:3080:LEU:HD23	2.21	0.41

Continued on next page...

Continued from previous page...

Atom-1	Atom-2	Interatomic distance (Å)	Clash overlap (Å)
1:A:4:LYS:O	1:A:4:LYS:HD3	2.20	0.41
1:B:1225:GLN:NE2	1:B:1225:GLN:HA	2.36	0.41
1:B:1333:ASP:O	1:B:1337:GLU:HG3	2.21	0.41
1:C:2013:ASP:H	1:C:2041:GLY:HA2	1.85	0.41
1:C:2086:ASN:HD22	1:C:2252:MET:HE1	1.85	0.41
1:C:2143:GLU:O	1:C:2147:ARG:HG3	2.20	0.41
1:C:2177:TYR:CE1	1:C:2203:ARG:HB2	2.56	0.41
1:D:3119:GLN:HA	1:D:3125:PHE:CE1	2.56	0.41
1:D:3186:HIS:HA	7:D:5009:NAG:H83	2.03	0.41
1:D:3282:LEU:N	1:D:3282:LEU:CD2	2.84	0.41
1:A:15:ARG:HG3	1:A:15:ARG:HH11	1.86	0.41
1:A:149:LEU:HD11	1:A:156:ILE:HD11	2.03	0.41
1:A:301:ASN:O	1:A:302:GLU:CG	2.68	0.41
1:B:1055:ARG:HG2	1:B:1056:TYR:CE2	2.56	0.41
1:C:2068:GLN:CG	1:C:2249:LYS:HG3	2.47	0.41
1:C:2098:ILE:CG2	1:C:2099:TRP:H	2.29	0.41
1:C:2099:TRP:CH2	1:D:3046:TYR:CD1	3.09	0.41
1:A:11:ARG:HG3	1:A:257:HIS:HA	2.04	0.40
1:A:20:THR:OG1	1:A:21:PHE:N	2.55	0.40
1:A:53:ILE:HD12	1:A:57:TYR:CD1	2.55	0.40
1:A:54:ARG:CB	1:A:91:LEU:HD23	2.51	0.40
1:B:1004:PHE:CZ	1:B:1236:HIS:HB3	2.56	0.40
1:B:1126:ARG:HH21	5:B:7005:1PE:H121	1.85	0.40
1:B:1175:VAL:O	1:B:1178:PRO:HD2	2.20	0.40
1:C:2042:MET:O	1:C:2046:TYR:HB2	2.20	0.40
1:A:150:HIS:C	1:A:152:TYR:N	2.73	0.40
1:B:1147:LEU:O	1:B:1148:HIS:C	2.60	0.40
1:C:2309:LEU:HD23	1:C:2309:LEU:HA	1.91	0.40
1:D:3224:ARG:NH2	1:D:3332:PRO:HA	2.36	0.40
1:A:179:ASP:N	1:A:180:PRO:CD	2.84	0.40
1:B:1048:LEU:HD22	1:B:1052:ILE:CD1	2.51	0.40
1:D:3015:SER:HB2	1:D:3016:PRO:HD2	2.02	0.40
1:D:3148:LEU:HD11	1:D:3155:ILE:HD11	2.03	0.40
1:D:3244:ILE:HG22	1:D:3245:PRO:O	2.22	0.40
2:H:1:NAG:C6	2:H:2:NAG:O5	2.69	0.40
1:A:141:LYS:HD2	1:A:141:LYS:N	2.36	0.40
1:B:1014:ARG:HG3	1:B:1014:ARG:HH11	1.85	0.40
1:B:1069:VAL:CG1	1:B:1070:TYR:N	2.84	0.40
1:C:2177:TYR:OH	1:C:2203:ARG:HD3	2.21	0.40
1:C:2300:ASN:CG	2:H:1:NAG:HN2	2.24	0.40
1:D:3010:ARG:NH1	1:D:3275:PRO:O	2.55	0.40

Continued on next page...

Continued from previous page...

Atom-1	Atom-2	Interatomic distance (Å)	Clash overlap (Å)
1:A:8:LEU:HD12	1:A:253:MET:HG2	2.03	0.40
1:A:149:LEU:HD11	1:A:156:ILE:CD1	2.52	0.40
1:B:1005:VAL:HG21	1:B:1056:TYR:CZ	2.57	0.40
1:B:1242:GLN:NE2	1:D:3189:THR:OG1	2.47	0.40
1:C:2057:ARG:HA	1:C:2057:ARG:HD2	1.99	0.40
1:C:2099:TRP:HB3	1:D:3039:GLN:HG3	2.02	0.40
1:D:3255:ALA:HB1	1:D:3259:THR:OG1	2.21	0.40

There are no symmetry-related clashes.

5.3 Torsion angles [i](#)

5.3.1 Protein backbone [i](#)

In the following table, the Percentiles column shows the percent Ramachandran outliers of the chain as a percentile score with respect to all X-ray entries followed by that with respect to entries of similar resolution.

The Analysed column shows the number of residues for which the backbone conformation was analysed, and the total number of residues.

Mol	Chain	Analysed	Favoured	Allowed	Outliers	Percentiles	
1	A	340/354 (96%)	288 (85%)	39 (12%)	13 (4%)	3	13
1	B	338/354 (96%)	284 (84%)	43 (13%)	11 (3%)	4	15
1	C	340/354 (96%)	282 (83%)	41 (12%)	17 (5%)	2	7
1	D	340/354 (96%)	287 (84%)	37 (11%)	16 (5%)	2	8
All	All	1358/1416 (96%)	1141 (84%)	160 (12%)	57 (4%)	3	10

All (57) Ramachandran outliers are listed below:

Mol	Chain	Res	Type
1	A	62	ASN
1	A	65	TYR
1	B	1064	TYR
1	B	1245	SER
1	C	2099	TRP
1	C	2105	TRP
1	C	2167	GLN
1	D	3061	ASN

Continued on next page...

Continued from previous page...

Mol	Chain	Res	Type
1	D	3063	SER
1	D	3152	LYS
1	D	3167	GLN
1	A	123	TYR
1	A	153	LYS
1	B	1140	SER
1	B	1340	THR
1	C	2031	PRO
1	C	2033	GLY
1	C	2057	ARG
1	C	2066	HIS
1	C	2098	ILE
1	C	2149	HIS
1	C	2334	ASP
1	C	2338	GLU
1	D	3011	HIS
1	D	3066	HIS
1	D	3094	GLU
1	D	3102	ILE
1	D	3289	LYS
1	A	117	SER
1	A	151	PRO
1	A	246	PRO
1	A	335	ASP
1	B	1027	GLU
1	B	1061	ASN
1	C	2094	GLU
1	B	1148	HIS
1	C	2011	HIS
1	D	3064	TYR
1	D	3150	PRO
1	D	3153	ASP
1	A	64	SER
1	B	1063	SER
1	C	2075	ASP
1	C	2216	ILE
1	D	3028	SER
1	D	3166	GLY
1	A	269	ASP
1	B	1300	GLU
1	C	2021	PRO
1	D	3108	ILE

Continued on next page...

Continued from previous page...

Mol	Chain	Res	Type
1	A	330	PRO
1	C	2102	ILE
1	A	228	GLY
1	B	1215	ILE
1	A	32	PRO
1	B	1031	PRO
1	D	3312	PRO

5.3.2 Protein sidechains [i](#)

In the following table, the Percentiles column shows the percent sidechain outliers of the chain as a percentile score with respect to all X-ray entries followed by that with respect to entries of similar resolution.

The Analysed column shows the number of residues for which the sidechain conformation was analysed, and the total number of residues.

Mol	Chain	Analysed	Rotameric	Outliers	Percentiles	
1	A	314/325 (97%)	293 (93%)	21 (7%)	16	43
1	B	314/325 (97%)	297 (95%)	17 (5%)	22	54
1	C	314/325 (97%)	293 (93%)	21 (7%)	16	43
1	D	314/325 (97%)	295 (94%)	19 (6%)	18	48
All	All	1256/1300 (97%)	1178 (94%)	78 (6%)	18	47

All (78) residues with a non-rotameric sidechain are listed below:

Mol	Chain	Res	Type
1	A	4	LYS
1	A	37	GLN
1	A	46	HIS
1	A	49	LEU
1	A	53	ILE
1	A	58	ARG
1	A	91	LEU
1	A	127	ARG
1	A	144	GLU
1	A	147	LYS
1	A	154	ASP
1	A	197	GLU
1	A	212	LEU
1	A	214	LEU

Continued on next page...

Continued from previous page...

Mol	Chain	Res	Type
1	A	231	LEU
1	A	240	LYS
1	A	245	ILE
1	A	269	ASP
1	A	283	LEU
1	A	315	CYS
1	A	317	PRO
1	B	1006	THR
1	B	1009	PHE
1	B	1027	GLU
1	B	1036	GLN
1	B	1045	HIS
1	B	1048	LEU
1	B	1063	SER
1	B	1078	ARG
1	B	1090	LEU
1	B	1127	ASN
1	B	1145	LYS
1	B	1166	GLN
1	B	1168	LEU
1	B	1212	LEU
1	B	1241	THR
1	B	1281	LEU
1	B	1314	SER
1	C	2005	VAL
1	C	2036	GLN
1	C	2048	LEU
1	C	2061	ASN
1	C	2069	VAL
1	C	2072	ARG
1	C	2082	SER
1	C	2102	ILE
1	C	2105	TRP
1	C	2126	ARG
1	C	2127	ASN
1	C	2129	PRO
1	C	2130	ARG
1	C	2135	GLU
1	C	2145	GLN
1	C	2158	LEU
1	C	2169	LEU
1	C	2189	THR

Continued on next page...

Continued from previous page...

Mol	Chain	Res	Type
1	C	2213	LEU
1	C	2230	LEU
1	C	2322	ARG
1	D	3003	LYS
1	D	3005	VAL
1	D	3006	THR
1	D	3042	MET
1	D	3045	HIS
1	D	3048	LEU
1	D	3062	GLU
1	D	3069	VAL
1	D	3090	LEU
1	D	3108	ILE
1	D	3126	ARG
1	D	3127	ASN
1	D	3139	LEU
1	D	3153	ASP
1	D	3242	THR
1	D	3243	GLN
1	D	3268	ASP
1	D	3282	LEU
1	D	3289	LYS

Sometimes sidechains can be flipped to improve hydrogen bonding and reduce clashes. All (42) such sidechains are listed below:

Mol	Chain	Res	Type
1	A	37	GLN
1	A	46	HIS
1	A	67	HIS
1	A	87	ASN
1	A	120	GLN
1	A	233	ASN
1	A	237	ASN
1	A	265	GLN
1	A	305	HIS
1	A	334	GLN
1	B	1032	GLN
1	B	1036	GLN
1	B	1045	HIS
1	B	1068	GLN
1	B	1127	ASN
1	B	1131	GLN

Continued on next page...

Continued from previous page...

Mol	Chain	Res	Type
1	B	1144	GLN
1	B	1166	GLN
1	B	1185	HIS
1	B	1186	ASN
1	B	1225	GLN
1	B	1231	ASN
1	B	1263	GLN
1	C	2061	ASN
1	C	2086	ASN
1	C	2106	GLN
1	C	2127	ASN
1	C	2145	GLN
1	C	2186	HIS
1	C	2232	ASN
1	C	2264	GLN
1	C	2304	HIS
1	D	3045	HIS
1	D	3061	ASN
1	D	3068	GLN
1	D	3086	ASN
1	D	3100	ASN
1	D	3127	ASN
1	D	3226	GLN
1	D	3232	ASN
1	D	3236	ASN
1	D	3264	GLN

5.3.3 RNA [i](#)

There are no RNA molecules in this entry.

5.4 Non-standard residues in protein, DNA, RNA chains [i](#)

There are no non-standard protein/DNA/RNA residues in this entry.

5.5 Carbohydrates [i](#)

11 monosaccharides are modelled in this entry.

In the following table, the Counts columns list the number of bonds (or angles) for which Mogul statistics could be retrieved, the number of bonds (or angles) that are observed in the model and

the number of bonds (or angles) that are defined in the Chemical Component Dictionary. The Link column lists molecule types, if any, to which the group is linked. The Z score for a bond length (or angle) is the number of standard deviations the observed value is removed from the expected value. A bond length (or angle) with $|Z| > 2$ is considered an outlier worth inspection. RMSZ is the root-mean-square of all Z scores of the bond lengths (or angles).

Mol	Type	Chain	Res	Link	Bond lengths			Bond angles		
					Counts	RMSZ	# Z > 2	Counts	RMSZ	# Z > 2
2	NAG	E	1	2,1	15,15,15	0.53	0	21,21,21	0.90	1 (4%)
2	NAG	E	2	2	15,15,15	0.43	0	21,21,21	0.51	0
2	NAG	F	1	2,1	15,15,15	0.43	0	21,21,21	0.68	0
2	NAG	F	2	2	15,15,15	0.45	0	21,21,21	1.07	2 (9%)
2	NAG	G	1	2	15,15,15	0.44	0	21,21,21	0.59	0
2	NAG	G	2	2	15,15,15	0.51	0	21,21,21	1.00	1 (4%)
2	NAG	H	1	2,1	15,15,15	0.75	0	21,21,21	1.04	1 (4%)
2	NAG	H	2	2	15,15,15	0.45	0	21,21,21	0.88	1 (4%)
3	NAG	I	1	1,3	15,15,15	0.54	0	21,21,21	0.58	0
3	NAG	I	2	3	15,15,15	0.47	0	21,21,21	1.04	1 (4%)
3	MAN	I	3	3	12,12,12	0.61	0	17,17,17	0.52	0

In the following table, the Chirals column lists the number of chiral outliers, the number of chiral centers analysed, the number of these observed in the model and the number defined in the Chemical Component Dictionary. Similar counts are reported in the Torsion and Rings columns. '-' means no outliers of that kind were identified.

Mol	Type	Chain	Res	Link	Chirals	Torsions	Rings
2	NAG	E	1	2,1	-	4/6/26/26	0/1/1/1
2	NAG	E	2	2	1/1/6/7	4/6/26/26	0/1/1/1
2	NAG	F	1	2,1	1/1/6/7	2/6/26/26	0/1/1/1
2	NAG	F	2	2	-	2/6/26/26	0/1/1/1
2	NAG	G	1	2	1/1/6/7	2/6/26/26	0/1/1/1
2	NAG	G	2	2	-	4/6/26/26	0/1/1/1
2	NAG	H	1	2,1	1/1/6/7	6/6/26/26	0/1/1/1
2	NAG	H	2	2	1/1/6/7	3/6/26/26	0/1/1/1
3	NAG	I	1	1,3	1/1/6/7	0/6/26/26	0/1/1/1
3	NAG	I	2	3	-	2/6/26/26	0/1/1/1
3	MAN	I	3	3	-	2/2/22/22	0/1/1/1

There are no bond length outliers.

All (7) bond angle outliers are listed below:

Mol	Chain	Res	Type	Atoms	Z	Observed(°)	Ideal(°)
2	F	2	NAG	O1-C1-C2	-3.52	101.91	109.22
3	I	2	NAG	O1-C1-C2	-3.49	101.96	109.22
2	H	1	NAG	C1-C2-C3	-3.30	106.05	110.54
2	G	2	NAG	O1-C1-C2	-3.28	102.41	109.22
2	E	1	NAG	O1-C1-C2	-2.92	103.16	109.22
2	H	2	NAG	O5-C1-C2	2.60	112.13	109.52
2	F	2	NAG	C1-C2-C3	-2.00	107.81	110.54

All (6) chirality outliers are listed below:

Mol	Chain	Res	Type	Atom
2	E	2	NAG	C1
2	F	1	NAG	C1
2	G	1	NAG	C1
2	H	1	NAG	C1
2	H	2	NAG	C1
3	I	1	NAG	C1

All (31) torsion outliers are listed below:

Mol	Chain	Res	Type	Atoms
2	E	2	NAG	C8-C7-N2-C2
2	E	2	NAG	O7-C7-N2-C2
2	H	1	NAG	C1-C2-N2-C7
2	H	1	NAG	O7-C7-N2-C2
2	H	2	NAG	C3-C2-N2-C7
2	H	2	NAG	C8-C7-N2-C2
2	H	2	NAG	O7-C7-N2-C2
3	I	3	MAN	C4-C5-C6-O6
2	H	1	NAG	C8-C7-N2-C2
2	H	1	NAG	O5-C5-C6-O6
2	F	2	NAG	O5-C5-C6-O6
2	G	2	NAG	O5-C5-C6-O6
3	I	3	MAN	O5-C5-C6-O6
2	G	2	NAG	C4-C5-C6-O6
2	E	1	NAG	C8-C7-N2-C2
3	I	2	NAG	C8-C7-N2-C2
2	H	1	NAG	C4-C5-C6-O6
2	F	2	NAG	C4-C5-C6-O6
2	E	1	NAG	O7-C7-N2-C2
3	I	2	NAG	O7-C7-N2-C2
2	E	2	NAG	C3-C2-N2-C7
2	E	1	NAG	C4-C5-C6-O6

Continued on next page...

Continued from previous page...

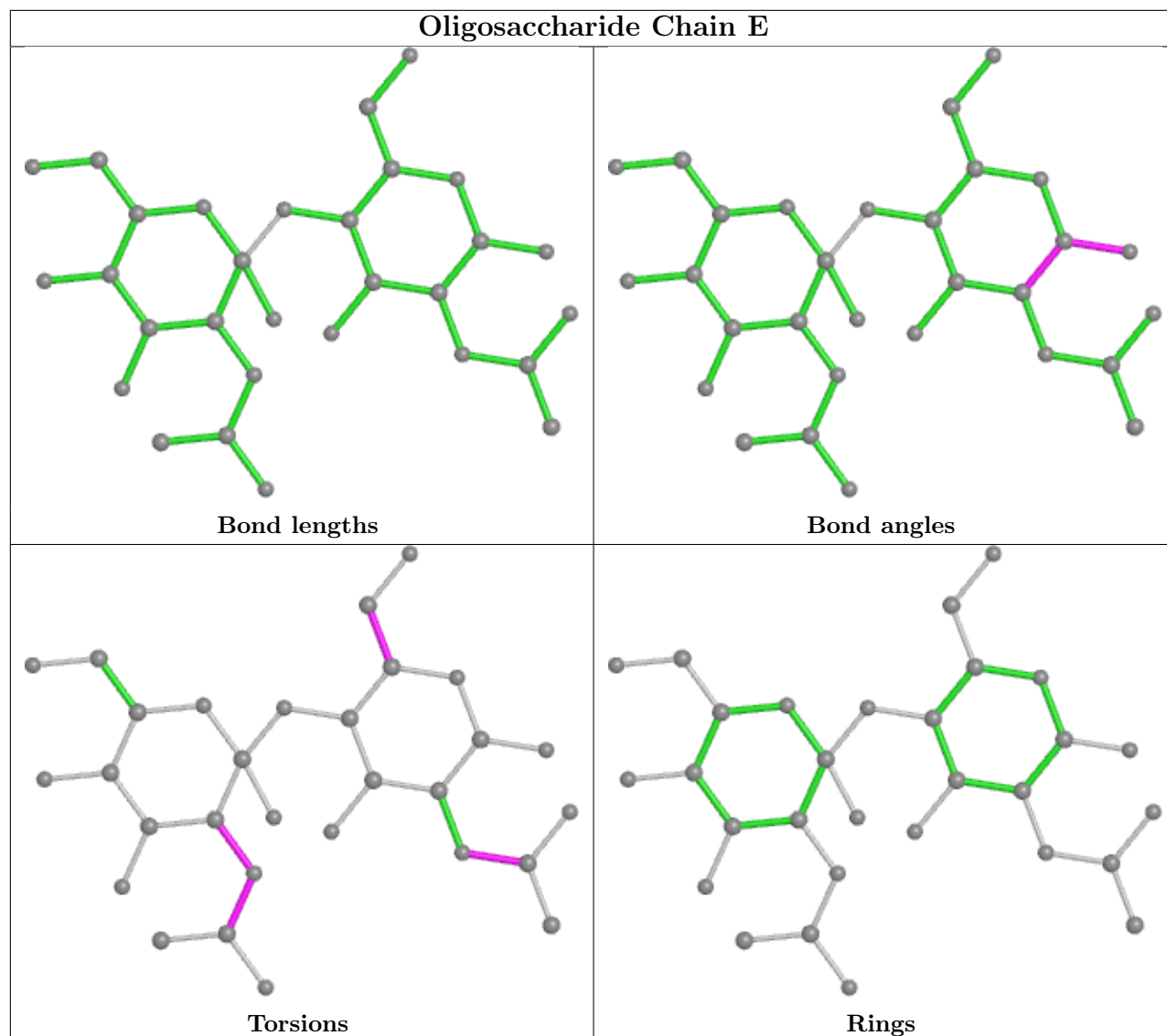
Mol	Chain	Res	Type	Atoms
2	E	1	NAG	O5-C5-C6-O6
2	G	1	NAG	C4-C5-C6-O6
2	G	1	NAG	O5-C5-C6-O6
2	G	2	NAG	C8-C7-N2-C2
2	F	1	NAG	C8-C7-N2-C2
2	F	1	NAG	O7-C7-N2-C2
2	G	2	NAG	O7-C7-N2-C2
2	H	1	NAG	C3-C2-N2-C7
2	E	2	NAG	C1-C2-N2-C7

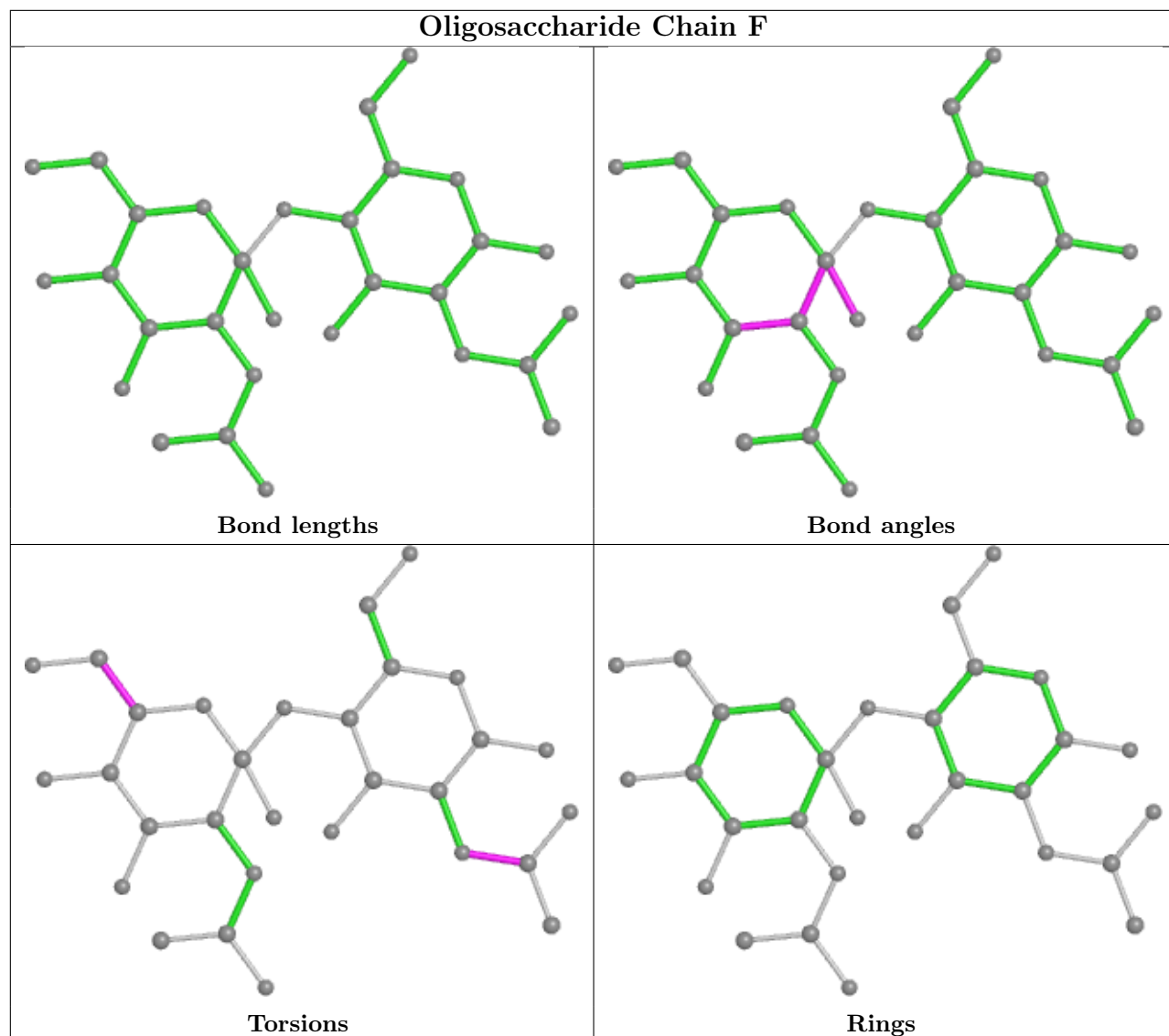
There are no ring outliers.

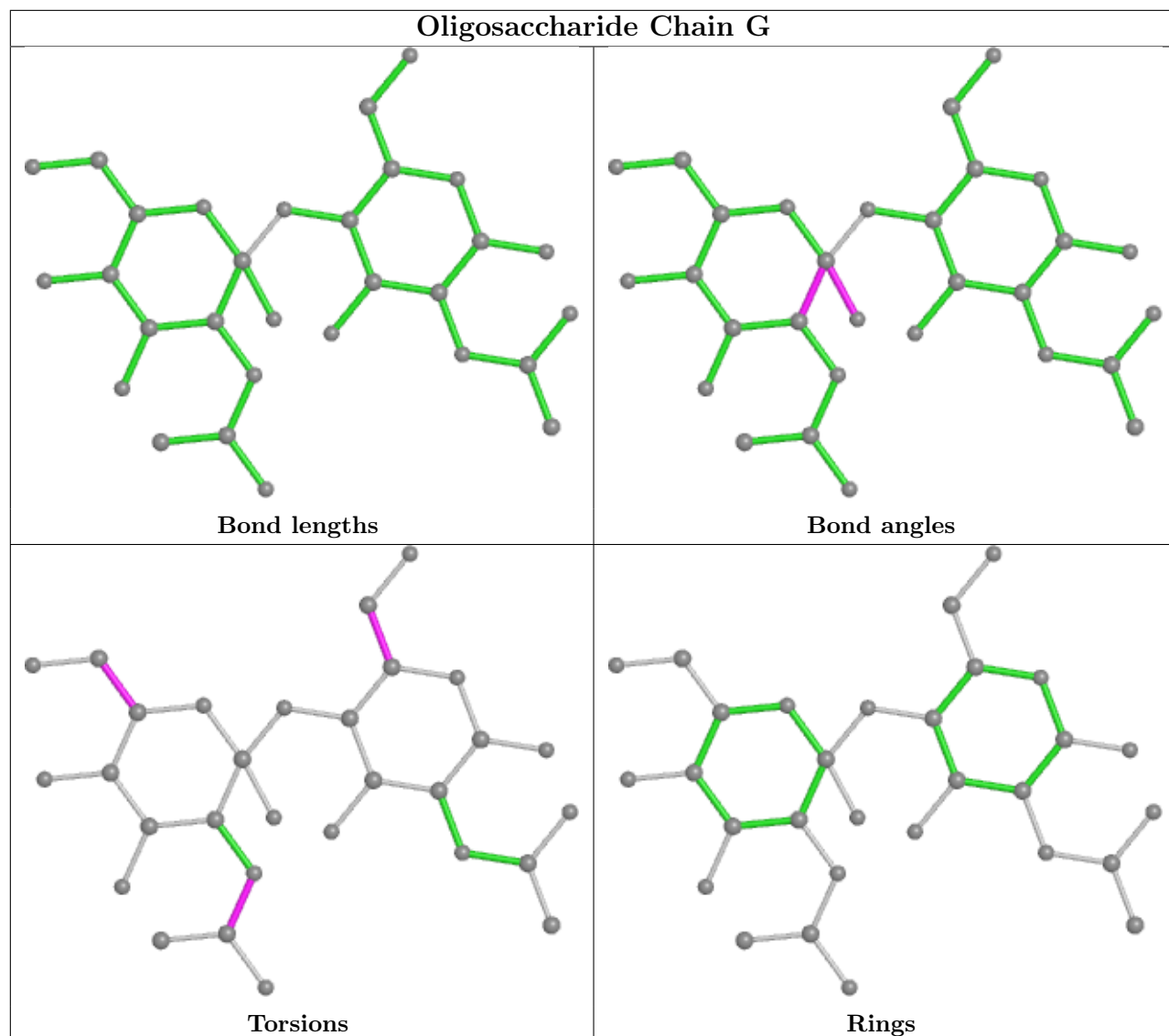
8 monomers are involved in 29 short contacts:

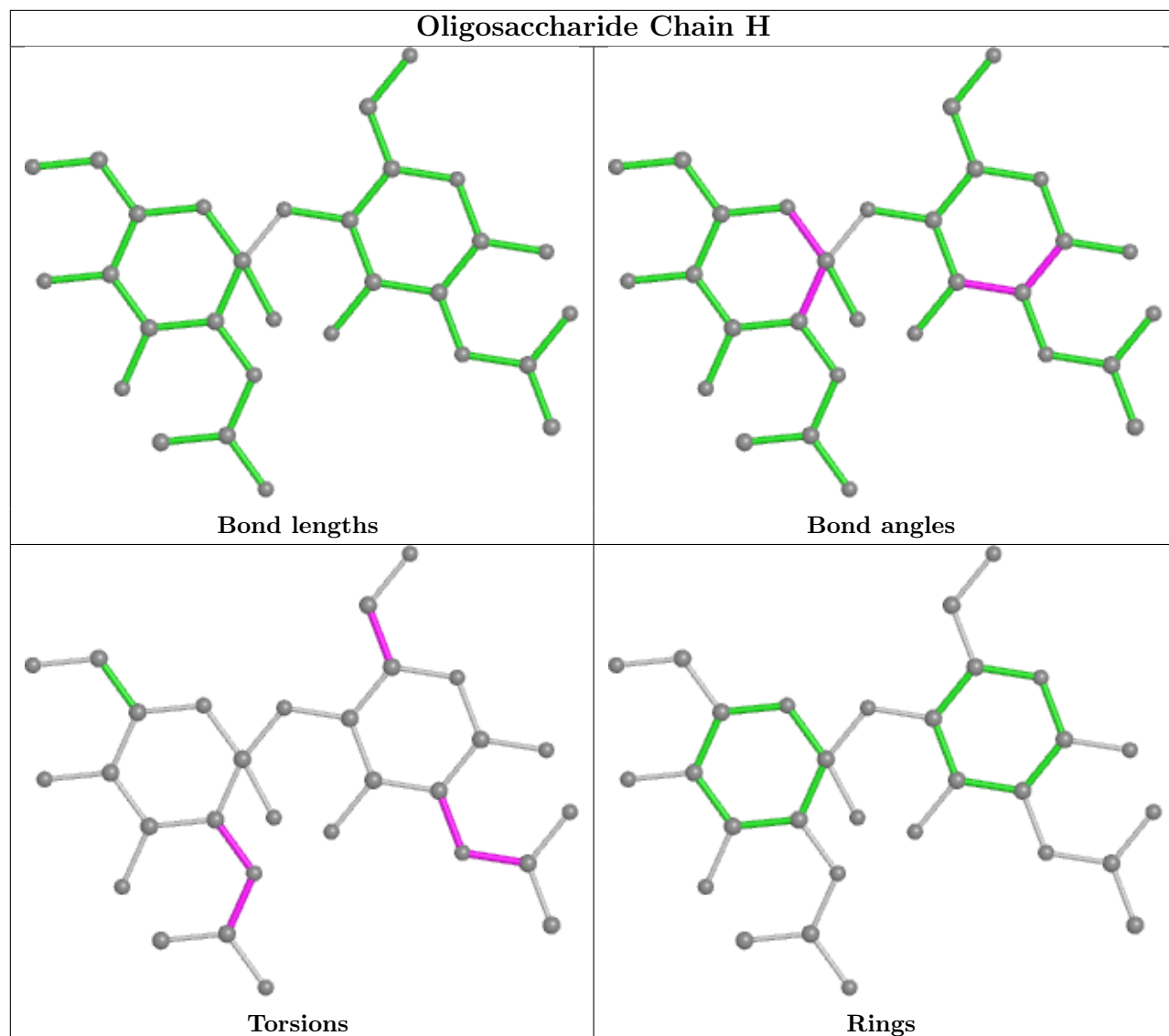
Mol	Chain	Res	Type	Clashes	Symm-Clashes
2	G	1	NAG	9	0
2	H	2	NAG	4	0
3	I	1	NAG	4	0
3	I	2	NAG	3	0
2	F	1	NAG	4	0
2	E	1	NAG	4	0
2	E	2	NAG	2	0
2	H	1	NAG	7	0

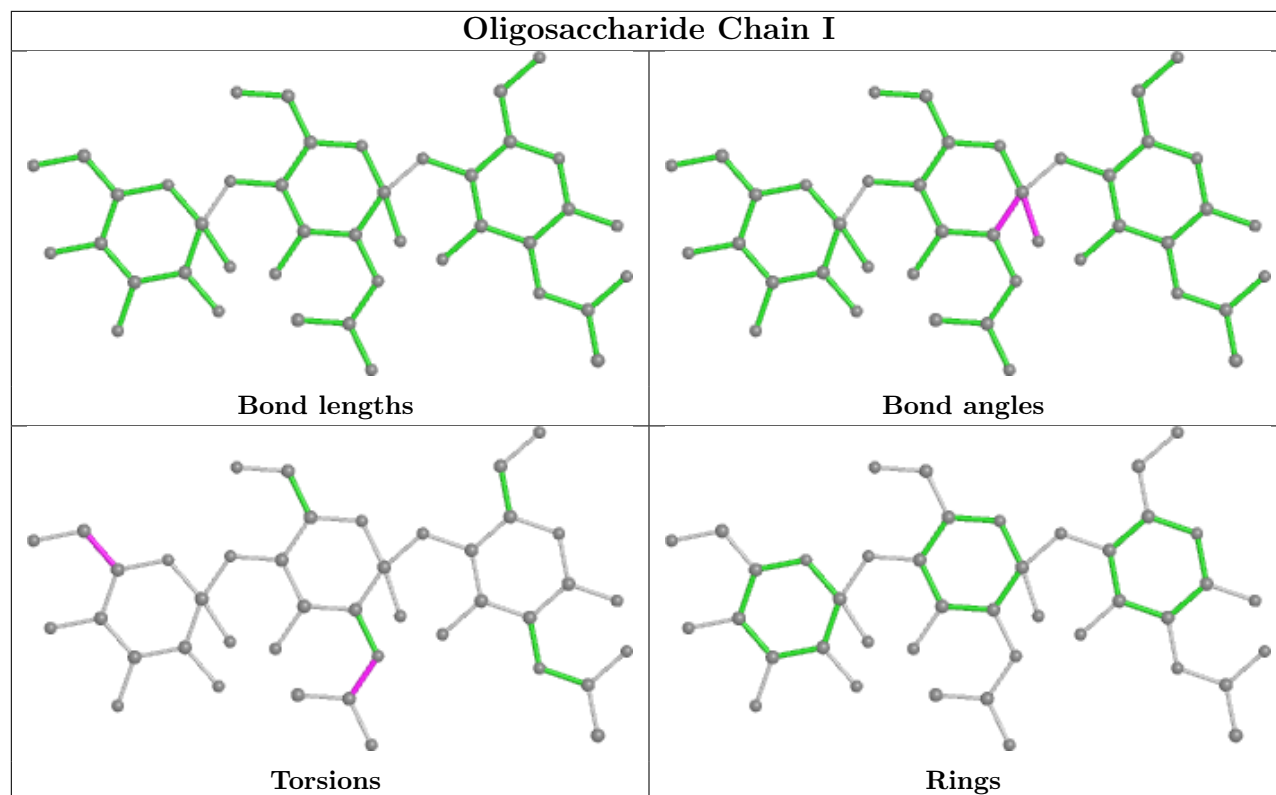
The following is a two-dimensional graphical depiction of Mogul quality analysis of bond lengths, bond angles, torsion angles, and ring geometry for oligosaccharide.











5.6 Ligand geometry [i](#)

14 ligands are modelled in this entry.

In the following table, the Counts columns list the number of bonds (or angles) for which Mogul statistics could be retrieved, the number of bonds (or angles) that are observed in the model and the number of bonds (or angles) that are defined in the Chemical Component Dictionary. The Link column lists molecule types, if any, to which the group is linked. The Z score for a bond length (or angle) is the number of standard deviations the observed value is removed from the expected value. A bond length (or angle) with $|Z| > 2$ is considered an outlier worth inspection. RMSZ is the root-mean-square of all Z scores of the bond lengths (or angles).

Mol	Type	Chain	Res	Link	Bond lengths			Bond angles		
					Counts	RMSZ	$\# Z > 2$	Counts	RMSZ	$\# Z > 2$
7	NAG	D	5009	1	15,15,15	0.43	0	21,21,21	0.61	0
5	1PE	A	7004	-	15,15,15	0.79	0	14,14,14	1.54	4 (28%)
5	1PE	A	7000	-	15,15,15	0.90	0	14,14,14	1.51	4 (28%)
5	1PE	A	7007	-	15,15,15	0.95	0	14,14,14	1.52	4 (28%)
5	1PE	C	7006	-	15,15,15	0.87	0	14,14,14	1.52	4 (28%)
5	1PE	D	7003	-	15,15,15	0.84	0	14,14,14	1.47	4 (28%)
4	2BF	D	6003	-	20,20,20	3.99	14 (70%)	22,27,27	1.26	3 (13%)
5	1PE	C	7002	-	15,15,15	0.85	0	14,14,14	1.53	4 (28%)
6	NDG	B	5004	-	15,15,15	0.31	0	21,21,21	0.64	0

Mol	Type	Chain	Res	Link	Bond lengths			Bond angles		
					Counts	RMSZ	# Z > 2	Counts	RMSZ	# Z > 2
5	1PE	B	7005	-	15,15,15	0.83	0	14,14,14	1.54	4 (28%)
4	2BF	A	6000	-	20,20,20	3.96	15 (75%)	22,27,27	1.33	3 (13%)
4	2BF	B	6001	-	20,20,20	3.77	15 (75%)	22,27,27	1.34	3 (13%)
4	2BF	C	6002	-	20,20,20	3.83	15 (75%)	22,27,27	1.38	4 (18%)
5	1PE	B	7001	-	15,15,15	0.71	0	14,14,14	1.47	4 (28%)

In the following table, the Chirals column lists the number of chiral outliers, the number of chiral centers analysed, the number of these observed in the model and the number defined in the Chemical Component Dictionary. Similar counts are reported in the Torsion and Rings columns. '-' means no outliers of that kind were identified.

Mol	Type	Chain	Res	Link	Chirals	Torsions	Rings
7	NAG	D	5009	1	1/1/6/7	5/6/26/26	0/1/1/1
5	1PE	A	7004	-	-	6/13/13/13	-
5	1PE	A	7000	-	-	8/13/13/13	-
5	1PE	A	7007	-	-	6/13/13/13	-
5	1PE	C	7006	-	-	7/13/13/13	-
5	1PE	D	7003	-	-	3/13/13/13	-
4	2BF	D	6003	-	-	7/15/15/15	0/2/2/2
5	1PE	C	7002	-	-	4/13/13/13	-
6	NDG	B	5004	-	-	4/6/26/26	0/1/1/1
5	1PE	B	7005	-	-	6/13/13/13	-
4	2BF	A	6000	-	-	7/15/15/15	0/2/2/2
4	2BF	B	6001	-	-	7/15/15/15	0/2/2/2
4	2BF	C	6002	-	-	1/15/15/15	0/2/2/2
5	1PE	B	7001	-	-	5/13/13/13	-

All (59) bond length outliers are listed below:

Mol	Chain	Res	Type	Atoms	Z	Observed(Å)	Ideal(Å)
4	A	6000	2BF	C9-C8	8.39	1.56	1.38
4	C	6002	2BF	C9-C8	8.34	1.56	1.38
4	D	6003	2BF	C9-C8	8.24	1.56	1.38
4	B	6001	2BF	C9-C8	8.21	1.56	1.38
4	D	6003	2BF	P-O1P	7.07	1.61	1.49
4	A	6000	2BF	P-O1P	6.67	1.60	1.49
4	A	6000	2BF	C12-C11	6.62	1.55	1.38
4	B	6001	2BF	C12-C11	6.50	1.55	1.38

Continued on next page...

Continued from previous page...

Mol	Chain	Res	Type	Atoms	Z	Observed(Å)	Ideal(Å)
4	D	6003	2BF	C12-C11	6.45	1.55	1.38
4	A	6000	2BF	C3-C2	6.38	1.54	1.38
4	C	6002	2BF	C12-C11	6.36	1.54	1.38
4	C	6002	2BF	P-O1P	6.19	1.60	1.49
4	D	6003	2BF	C3-C2	6.10	1.54	1.38
4	B	6001	2BF	C3-C2	6.05	1.54	1.38
4	C	6002	2BF	C3-C2	5.92	1.53	1.38
4	B	6001	2BF	P-O1P	5.80	1.59	1.49
4	D	6003	2BF	P-O2P	4.78	1.62	1.54
4	B	6001	2BF	P-O2P	4.66	1.62	1.54
4	A	6000	2BF	P-O3P	4.46	1.61	1.54
4	A	6000	2BF	C6-C5	4.45	1.46	1.39
4	D	6003	2BF	C6-C5	4.44	1.46	1.39
4	D	6003	2BF	P-O3P	4.30	1.61	1.54
4	A	6000	2BF	P-O2P	4.10	1.61	1.54
4	C	6002	2BF	P-O2P	4.09	1.61	1.54
4	C	6002	2BF	P-O3P	4.00	1.61	1.54
4	C	6002	2BF	C6-C5	3.85	1.45	1.39
4	B	6001	2BF	C6-C5	3.82	1.45	1.39
4	A	6000	2BF	C4-C5	3.78	1.45	1.39
4	B	6001	2BF	C4-C5	3.66	1.45	1.39
4	C	6002	2BF	C4-C5	3.51	1.44	1.39
4	D	6003	2BF	C4-C5	3.46	1.44	1.39
4	B	6001	2BF	P-O3P	3.46	1.60	1.54
4	D	6003	2BF	P-C7	3.28	1.88	1.83
4	C	6002	2BF	C13-C8	3.21	1.45	1.38
4	D	6003	2BF	C13-C8	2.79	1.44	1.38
4	A	6000	2BF	C3-C4	2.70	1.44	1.38
4	C	6002	2BF	C11-C10	2.70	1.45	1.38
4	B	6001	2BF	C3-C4	2.68	1.44	1.38
4	A	6000	2BF	C1-C6	2.65	1.44	1.38
4	C	6002	2BF	C1-C6	2.58	1.44	1.38
4	B	6001	2BF	C1-C6	2.58	1.44	1.38
4	B	6001	2BF	C13-C8	2.57	1.44	1.38
4	A	6000	2BF	C13-C8	2.53	1.44	1.38
4	C	6002	2BF	C3-C4	2.50	1.44	1.38
4	D	6003	2BF	C1-C6	2.36	1.43	1.38
4	D	6003	2BF	C11-C10	2.33	1.44	1.38
4	A	6000	2BF	C2-C1	2.28	1.44	1.38
4	D	6003	2BF	C3-C4	2.25	1.43	1.38
4	C	6002	2BF	C2-C1	2.24	1.43	1.38
4	A	6000	2BF	P-C7	2.23	1.86	1.83

Continued on next page...

Continued from previous page...

Mol	Chain	Res	Type	Atoms	Z	Observed(Å)	Ideal(Å)
4	C	6002	2BF	P-C7	2.23	1.86	1.83
4	B	6001	2BF	C12-C13	2.23	1.43	1.38
4	A	6000	2BF	C11-C10	2.19	1.43	1.38
4	B	6001	2BF	C2-C1	2.19	1.43	1.38
4	D	6003	2BF	C12-C13	2.14	1.43	1.38
4	C	6002	2BF	C12-C13	2.13	1.43	1.38
4	B	6001	2BF	C11-C10	2.13	1.43	1.38
4	B	6001	2BF	P-C7	2.03	1.86	1.83
4	A	6000	2BF	C12-C13	2.02	1.43	1.38

All (45) bond angle outliers are listed below:

Mol	Chain	Res	Type	Atoms	Z	Observed(°)	Ideal(°)
4	B	6001	2BF	O1P-P-C7	-4.14	104.03	111.07
4	C	6002	2BF	O1P-P-C7	-3.83	104.56	111.07
4	A	6000	2BF	O1P-P-C7	-3.32	105.42	111.07
4	D	6003	2BF	C8-C19-N	-2.81	105.73	112.67
5	C	7006	1PE	C25-OH5-C14	2.76	125.26	113.29
5	D	7003	1PE	C25-OH5-C14	2.67	124.88	113.29
5	A	7007	1PE	C25-OH5-C14	2.67	124.84	113.29
5	A	7000	1PE	C25-OH5-C14	2.66	124.82	113.29
5	B	7001	1PE	C25-OH5-C14	2.66	124.81	113.29
5	A	7004	1PE	C25-OH5-C14	2.64	124.72	113.29
5	B	7005	1PE	C25-OH5-C14	2.64	124.71	113.29
5	A	7004	1PE	OH6-C26-C16	2.63	121.62	110.07
5	C	7002	1PE	OH6-C26-C16	2.60	121.51	110.07
5	C	7002	1PE	C25-OH5-C14	2.55	124.32	113.29
5	A	7000	1PE	OH4-C13-C23	2.55	121.88	110.39
5	D	7003	1PE	OH6-C26-C16	2.54	121.22	110.07
5	C	7006	1PE	OH6-C26-C16	2.54	121.21	110.07
4	D	6003	2BF	C6-C5-C7	-2.50	117.89	120.77
5	B	7005	1PE	OH6-C26-C16	2.48	120.96	110.07
5	B	7005	1PE	OH3-C22-C12	2.47	120.91	110.07
5	B	7001	1PE	OH6-C26-C16	2.44	120.79	110.07
4	A	6000	2BF	C8-C19-N	-2.44	106.64	112.67
5	A	7000	1PE	OH6-C26-C16	2.44	120.78	110.07
5	B	7005	1PE	OH4-C13-C23	2.44	121.38	110.39
5	A	7000	1PE	OH3-C22-C12	2.43	120.72	110.07
5	C	7006	1PE	OH3-C22-C12	2.42	120.72	110.07
5	A	7007	1PE	OH6-C26-C16	2.41	120.66	110.07
4	C	6002	2BF	C8-C19-N	-2.41	106.71	112.67
4	D	6003	2BF	O1P-P-C7	-2.40	106.99	111.07

Continued on next page...

Continued from previous page...

Mol	Chain	Res	Type	Atoms	Z	Observed(°)	Ideal(°)
5	C	7002	1PE	OH4-C13-C23	2.39	121.16	110.39
5	A	7004	1PE	OH3-C22-C12	2.38	120.54	110.07
5	B	7001	1PE	OH3-C22-C12	2.38	120.52	110.07
5	C	7006	1PE	OH4-C13-C23	2.35	121.00	110.39
5	A	7007	1PE	OH4-C13-C23	2.34	120.96	110.39
5	C	7002	1PE	OH3-C22-C12	2.32	120.27	110.07
5	A	7004	1PE	OH4-C13-C23	2.32	120.84	110.39
5	D	7003	1PE	OH4-C13-C23	2.31	120.80	110.39
4	A	6000	2BF	C6-C5-C7	-2.31	118.11	120.77
5	B	7001	1PE	OH4-C13-C23	2.29	120.74	110.39
5	D	7003	1PE	OH3-C22-C12	2.27	120.06	110.07
5	A	7007	1PE	OH3-C22-C12	2.20	119.75	110.07
4	B	6001	2BF	C8-C19-N	-2.17	107.30	112.67
4	C	6002	2BF	O3P-P-O1P	-2.13	108.10	113.45
4	B	6001	2BF	C6-C5-C7	-2.12	118.33	120.77
4	C	6002	2BF	C6-C5-C7	-2.06	118.39	120.77

All (1) chirality outliers are listed below:

Mol	Chain	Res	Type	Atom
7	D	5009	NAG	C1

All (76) torsion outliers are listed below:

Mol	Chain	Res	Type	Atoms
4	A	6000	2BF	C5-C7-P-O1P
4	A	6000	2BF	C5-C7-P-O2P
4	A	6000	2BF	C5-C7-P-O3P
4	A	6000	2BF	N-C7-P-O1P
4	A	6000	2BF	N-C7-P-O2P
4	A	6000	2BF	N-C7-P-O3P
4	B	6001	2BF	C5-C7-P-O3P
4	B	6001	2BF	N-C7-P-O1P
4	B	6001	2BF	N-C7-P-O2P
4	B	6001	2BF	N-C7-P-O3P
4	D	6003	2BF	C5-C7-P-O1P
4	D	6003	2BF	C5-C7-P-O2P
4	D	6003	2BF	C5-C7-P-O3P
4	D	6003	2BF	N-C7-P-O1P
4	D	6003	2BF	N-C7-P-O2P
4	D	6003	2BF	N-C7-P-O3P
7	D	5009	NAG	C1-C2-N2-C7

Continued on next page...

Continued from previous page...

Mol	Chain	Res	Type	Atoms
6	B	5004	NDG	C8-C7-N2-C2
7	D	5009	NAG	C8-C7-N2-C2
7	D	5009	NAG	O7-C7-N2-C2
7	D	5009	NAG	O5-C5-C6-O6
5	B	7005	1PE	OH4-C13-C23-OH3
5	B	7005	1PE	OH5-C14-C24-OH4
5	C	7006	1PE	OH5-C14-C24-OH4
6	B	5004	NDG	O7-C7-N2-C2
4	A	6000	2BF	C8-C19-N-C7
4	B	6001	2BF	C8-C19-N-C7
4	C	6002	2BF	C8-C19-N-C7
5	C	7006	1PE	OH4-C13-C23-OH3
5	A	7004	1PE	OH6-C15-C25-OH5
7	D	5009	NAG	C4-C5-C6-O6
5	C	7006	1PE	OH6-C15-C25-OH5
6	B	5004	NDG	O5-C5-C6-O6
5	B	7001	1PE	OH5-C14-C24-OH4
5	B	7001	1PE	OH4-C13-C23-OH3
5	A	7007	1PE	OH5-C14-C24-OH4
4	B	6001	2BF	C5-C7-P-O1P
5	A	7000	1PE	OH7-C16-C26-OH6
5	B	7001	1PE	OH7-C16-C26-OH6
5	A	7004	1PE	OH7-C16-C26-OH6
5	C	7006	1PE	OH2-C12-C22-OH3
5	A	7000	1PE	OH2-C12-C22-OH3
5	C	7006	1PE	OH7-C16-C26-OH6
5	A	7000	1PE	OH5-C14-C24-OH4
6	B	5004	NDG	C4-C5-C6-O6
5	A	7004	1PE	OH5-C14-C24-OH4
4	D	6003	2BF	C8-C19-N-C7
5	D	7003	1PE	OH6-C15-C25-OH5
5	A	7000	1PE	OH4-C13-C23-OH3
5	C	7002	1PE	OH4-C13-C23-OH3
5	D	7003	1PE	OH2-C12-C22-OH3
5	A	7007	1PE	OH4-C13-C23-OH3
5	C	7002	1PE	OH2-C12-C22-OH3
5	B	7005	1PE	C15-C25-OH5-C14
5	A	7000	1PE	C14-C24-OH4-C13
4	B	6001	2BF	C5-C7-P-O2P
5	C	7006	1PE	C13-C23-OH3-C22
5	D	7003	1PE	C13-C23-OH3-C22
5	A	7007	1PE	C24-C14-OH5-C25

Continued on next page...

Continued from previous page...

Mol	Chain	Res	Type	Atoms
5	A	7007	1PE	OH7-C16-C26-OH6
5	A	7000	1PE	OH6-C15-C25-OH5
5	C	7002	1PE	C12-C22-OH3-C23
5	B	7005	1PE	C14-C24-OH4-C13
5	C	7002	1PE	C15-C25-OH5-C14
5	A	7000	1PE	C12-C22-OH3-C23
5	A	7000	1PE	C24-C14-OH5-C25
5	B	7001	1PE	OH2-C12-C22-OH3
5	B	7005	1PE	C13-C23-OH3-C22
5	B	7001	1PE	OH6-C15-C25-OH5
5	C	7006	1PE	C24-C14-OH5-C25
5	A	7004	1PE	C13-C23-OH3-C22
5	B	7005	1PE	OH6-C15-C25-OH5
5	A	7007	1PE	OH2-C12-C22-OH3
5	A	7004	1PE	OH4-C13-C23-OH3
5	A	7004	1PE	C15-C25-OH5-C14
5	A	7007	1PE	C14-C24-OH4-C13

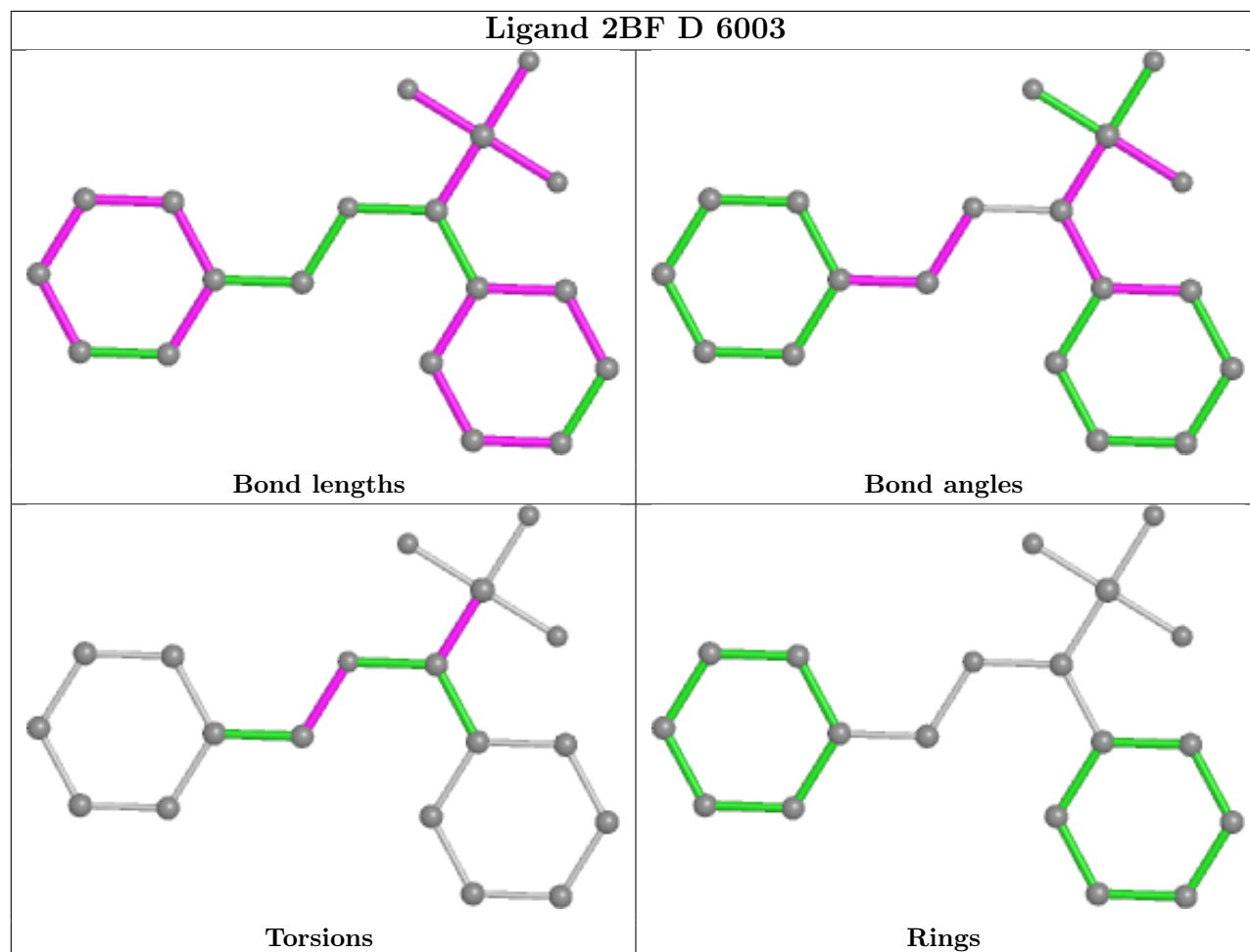
There are no ring outliers.

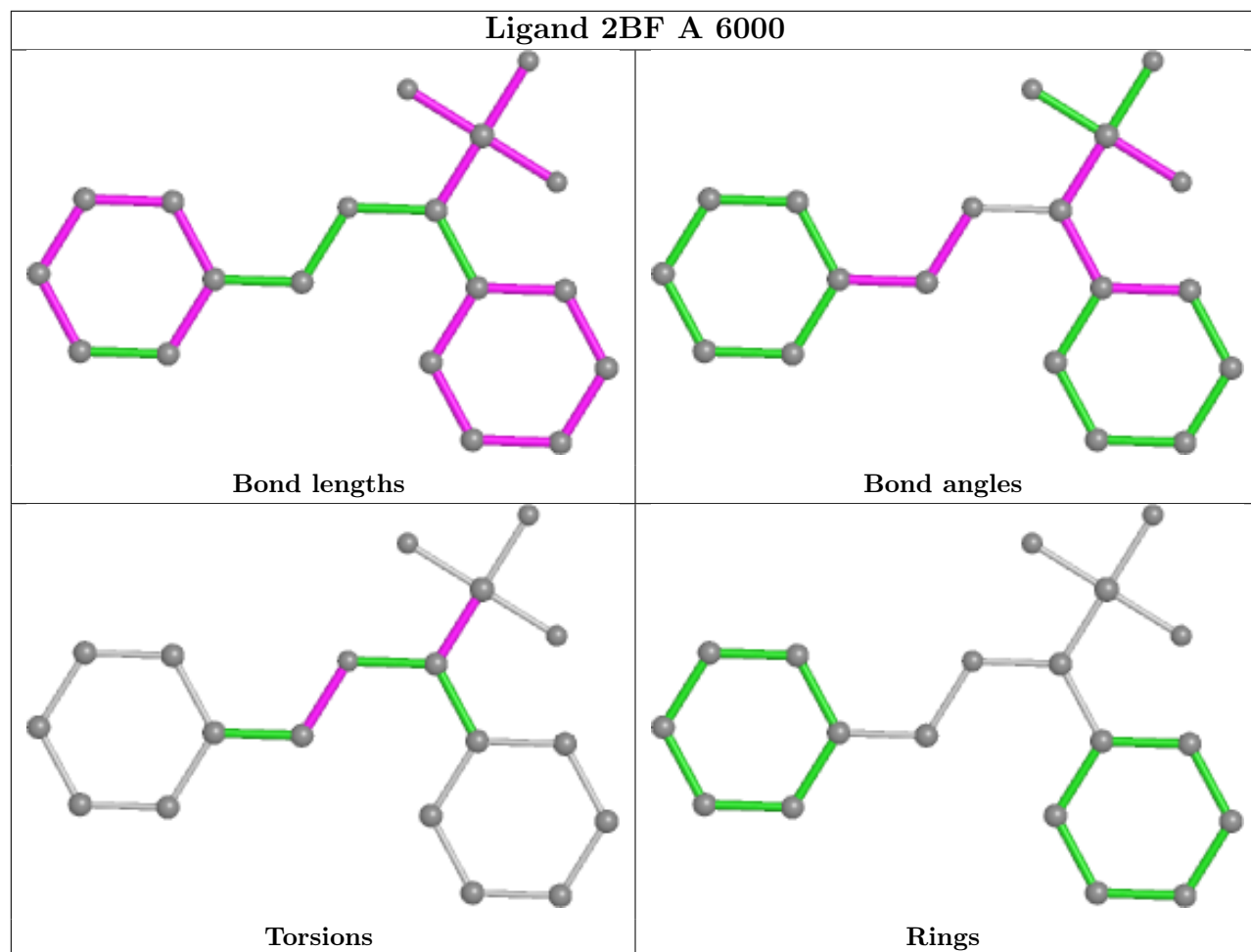
12 monomers are involved in 31 short contacts:

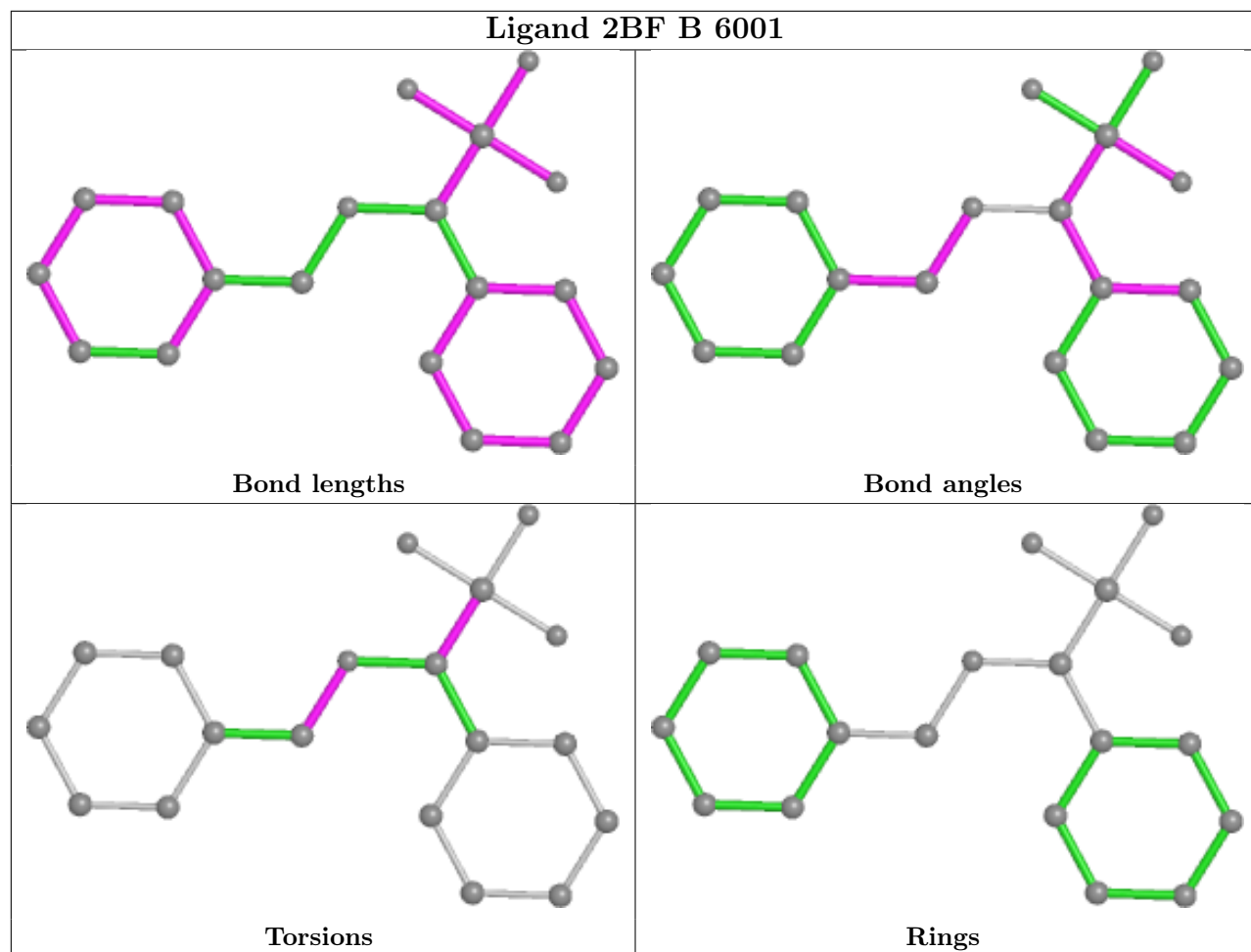
Mol	Chain	Res	Type	Clashes	Symm-Clashes
7	D	5009	NAG	6	0
5	A	7004	1PE	2	0
5	A	7000	1PE	1	0
5	C	7006	1PE	1	0
5	D	7003	1PE	1	0
5	C	7002	1PE	1	0
6	B	5004	NDG	7	0
5	B	7005	1PE	4	0
4	A	6000	2BF	3	0
4	B	6001	2BF	2	0
4	C	6002	2BF	2	0
5	B	7001	1PE	1	0

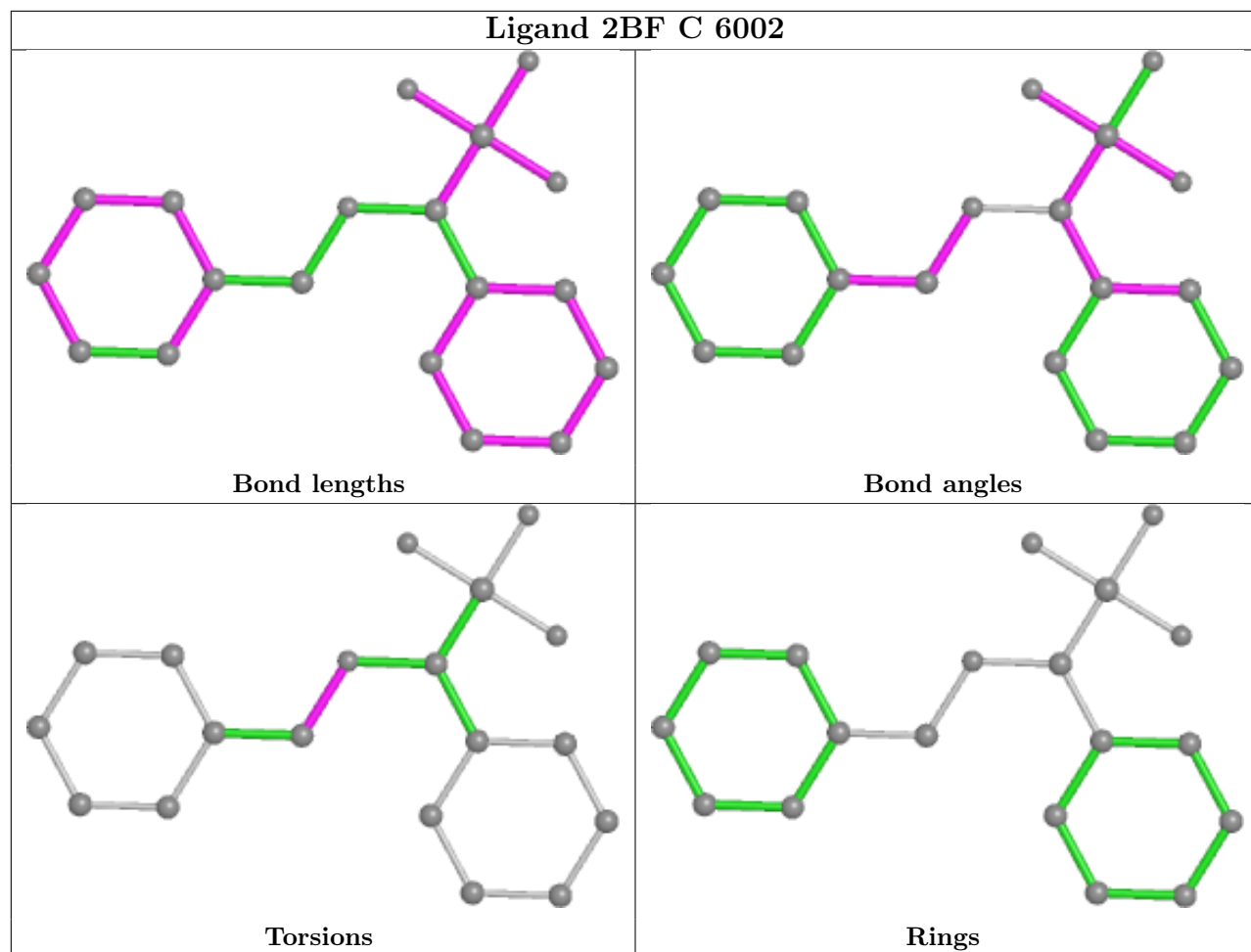
The following is a two-dimensional graphical depiction of Mogul quality analysis of bond lengths, bond angles, torsion angles, and ring geometry for all instances of the Ligand of Interest. In addition, ligands with molecular weight > 250 and outliers as shown on the validation Tables will also be included. For torsion angles, if less than 5% of the Mogul distribution of torsion angles is within 10 degrees of the torsion angle in question, then that torsion angle is considered an outlier. Any bond that is central to one or more torsion angles identified as an outlier by Mogul will be highlighted in the graph. For rings, the root-mean-square deviation (RMSD) between the ring

in question and similar rings identified by Mogul is calculated over all ring torsion angles. If the average RMSD is greater than 60 degrees and the minimal RMSD between the ring in question and any Mogul-identified rings is also greater than 60 degrees, then that ring is considered an outlier. The outliers are highlighted in purple. The color gray indicates Mogul did not find sufficient equivalents in the CSD to analyse the geometry.









5.7 Other polymers [i](#)

There are no such residues in this entry.

5.8 Polymer linkage issues [i](#)

There are no chain breaks in this entry.

6 Fit of model and data [i](#)

6.1 Protein, DNA and RNA chains [i](#)

EDS was not executed - this section is therefore empty.

6.2 Non-standard residues in protein, DNA, RNA chains [i](#)

EDS was not executed - this section is therefore empty.

6.3 Carbohydrates [i](#)

EDS was not executed - this section is therefore empty.

6.4 Ligands [i](#)

EDS was not executed - this section is therefore empty.

6.5 Other polymers [i](#)

EDS was not executed - this section is therefore empty.