



# wwPDB X-ray Structure Validation Summary Report

Oct 2, 2023 – 12:44 AM EDT

PDB ID : 6NC9  
Title : Lipid II flippase MurJ, outward-facing conformation  
Authors : Kuk, A.C.Y.; Lee, S.-Y.  
Deposited on : 2018-12-11  
Resolution : 1.80 Å(reported)

This is a wwPDB X-ray Structure Validation Summary Report for a publicly released PDB entry.

We welcome your comments at [validation@mail.wwpdb.org](mailto:validation@mail.wwpdb.org)

A user guide is available at

<https://www.wwpdb.org/validation/2017/XrayValidationReportHelp>

with specific help available everywhere you see the  symbol.

The types of validation reports are described at

<https://www.wwpdb.org/validation/2017/FAQs#types>.

---

The following versions of software and data (see [references](#) ) were used in the production of this report:

MolProbity : **FAILED**  
Mogul : 1.8.5 (274361), CSD as541be (2020)  
Xtrriage (Phenix) : 1.13  
EDS : **FAILED**  
buster-report : 1.1.7 (2018)  
Percentile statistics : 20191225.v01 (using entries in the PDB archive December 25th 2019)  
Ideal geometry (proteins) : Engh & Huber (2001)  
Ideal geometry (DNA, RNA) : Parkinson et al. (1996)  
Validation Pipeline (wwPDB-VP) : 2.35.1

## 1 Overall quality at a glance

The following experimental techniques were used to determine the structure:

*X-RAY DIFFRACTION*

The reported resolution of this entry is 1.80 Å.

There are no overall percentile quality scores available for this entry.

MolProbity and EDS failed to run properly - the sequence quality summary graphics cannot be shown.

## 2 Entry composition i

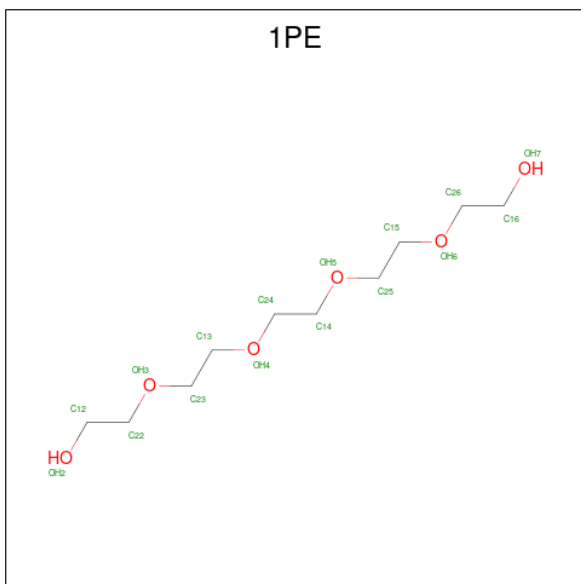
There are 6 unique types of molecules in this entry. The entry contains 8487 atoms, of which 4262 are hydrogens and 0 are deuteriums.

In the tables below, the ZeroOcc column contains the number of atoms modelled with zero occupancy, the AltConf column contains the number of residues with at least one atom in alternate conformation and the Trace column contains the number of residues modelled with at most 2 atoms.

- Molecule 1 is a protein called Lipid II flippase MurJ.

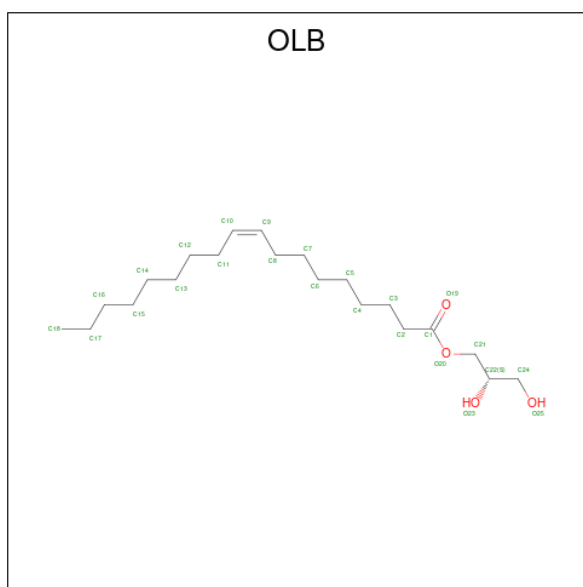
Mol	Chain	Residues	Atoms					ZeroOcc	AltConf	Trace	
			Total	C	H	N	O				S
1	A	475	7628	2566	3853	556	644	9	0	0	0

- Molecule 2 is PENTAETHYLENE GLYCOL (three-letter code: 1PE) (formula:  $C_{10}H_{22}O_6$ ).



Mol	Chain	Residues	Atoms				ZeroOcc	AltConf
			Total	C	H	O		
2	A	1	38	10	22	6	0	0

- Molecule 3 is (2S)-2,3-dihydroxypropyl (9Z)-octadec-9-enoate (three-letter code: OLB) (formula:  $C_{21}H_{40}O_4$ ).

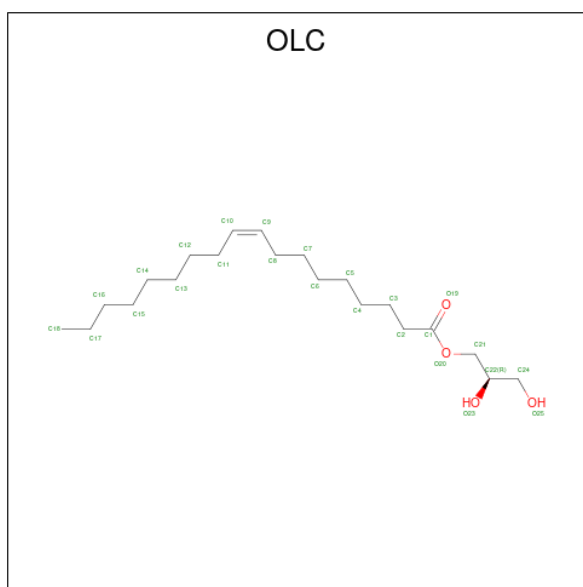


Mol	Chain	Residues	Atoms				ZeroOcc	AltConf
3	A	1	Total	C	H	O	0	0
			54	18	32	4		
3	A	1	Total	C	H	O	0	0
			45	15	26	4		
3	A	1	Total	C	H	O	0	0
			48	17	28	3		
3	A	1	Total	C	H	O	0	0
			42	14	24	4		
3	A	1	Total	C	H	O	0	0
			45	15	26	4		
3	A	1	Total	C	H	O	0	0
			54	18	32	4		
3	A	1	Total	C	H	O	0	0
			54	18	32	4		

- Molecule 4 is SODIUM ION (three-letter code: NA) (formula: Na).

Mol	Chain	Residues	Atoms		ZeroOcc	AltConf
4	A	1	Total	Na	0	0
			1	1		

- Molecule 5 is (2R)-2,3-dihydroxypropyl (9Z)-octadec-9-enoate (three-letter code: OLC) (formula: C<sub>21</sub>H<sub>40</sub>O<sub>4</sub>).



Mol	Chain	Residues	Atoms			ZeroOcc	AltConf	
5	A	1	Total	C	H	O	0	0
			51	17	30	4		
5	A	1	Total	C	H	O	0	0
			30	11	17	2		
5	A	1	Total	C	H	O	0	0
			35	11	20	4		
5	A	1	Total	C	H	O	0	0
			54	18	32	4		
5	A	1	Total	C	H	O	0	0
			32	10	18	4		
5	A	1	Total	C	H	O	0	0
			35	11	20	4		
5	A	1	Total	C	H	O	0	0
			20	7	10	3		
5	A	1	Total	C	H	O	0	0
			65	21	40	4		

- Molecule 6 is water.

Mol	Chain	Residues	Atoms		ZeroOcc	AltConf
6	A	156	Total	O	0	0
			156	156		

MolProbity and EDS failed to run properly - this section is therefore empty.

### 3 Data and refinement statistics

EDS failed to run properly - this section is therefore incomplete.

Property	Value	Source
Space group	C 1 2 1	Depositor
Cell constants a, b, c, $\alpha$ , $\beta$ , $\gamma$	128.58Å 57.44Å 86.41Å 90.00° 100.72° 90.00°	Depositor
Resolution (Å)	84.90 – 1.80	Depositor
% Data completeness (in resolution range)	88.5 (84.90-1.80)	Depositor
$R_{merge}$	(Not available)	Depositor
$R_{sym}$	(Not available)	Depositor
$\langle I/\sigma(I) \rangle$ <sup>1</sup>	1.54 (at 1.80Å)	Xtrriage
Refinement program	PHENIX (1.11.1_2575: ???)	Depositor
R, $R_{free}$	0.180 , 0.200	Depositor
Wilson B-factor (Å <sup>2</sup> )	15.9	Xtrriage
Anisotropy	0.179	Xtrriage
L-test for twinning <sup>2</sup>	$\langle  L  \rangle = 0.49$ , $\langle L^2 \rangle = 0.32$	Xtrriage
Estimated twinning fraction	No twinning to report.	Xtrriage
Total number of atoms	8487	wwPDB-VP
Average B, all atoms (Å <sup>2</sup> )	25.0	wwPDB-VP

Xtrriage's analysis on translational NCS is as follows: *The largest off-origin peak in the Patterson function is 7.26% of the height of the origin peak. No significant pseudotranslation is detected.*

<sup>1</sup>Intensities estimated from amplitudes.

<sup>2</sup>Theoretical values of  $\langle |L| \rangle$ ,  $\langle L^2 \rangle$  for acentric reflections are 0.5, 0.333 respectively for untwinned datasets, and 0.375, 0.2 for perfectly twinned datasets.

## 4 Model quality [i](#)

### 4.1 Standard geometry [i](#)

MolProbity failed to run properly - this section is therefore empty.

### 4.2 Too-close contacts [i](#)

MolProbity failed to run properly - this section is therefore empty.

### 4.3 Torsion angles [i](#)

#### 4.3.1 Protein backbone [i](#)

MolProbity failed to run properly - this section is therefore empty.

#### 4.3.2 Protein sidechains [i](#)

MolProbity failed to run properly - this section is therefore empty.

#### 4.3.3 RNA [i](#)

MolProbity failed to run properly - this section is therefore empty.

### 4.4 Non-standard residues in protein, DNA, RNA chains [i](#)

There are no non-standard protein/DNA/RNA residues in this entry.

### 4.5 Carbohydrates [i](#)

There are no monosaccharides in this entry.

### 4.6 Ligand geometry [i](#)

Of 17 ligands modelled in this entry, 1 is monoatomic - leaving 16 for Mogul analysis.

In the following table, the Counts columns list the number of bonds (or angles) for which Mogul statistics could be retrieved, the number of bonds (or angles) that are observed in the model and the number of bonds (or angles) that are defined in the Chemical Component Dictionary. The Link column lists molecule types, if any, to which the group is linked. The Z score for a bond

length (or angle) is the number of standard deviations the observed value is removed from the expected value. A bond length (or angle) with  $|Z| > 2$  is considered an outlier worth inspection. RMSZ is the root-mean-square of all Z scores of the bond lengths (or angles).

Mol	Type	Chain	Res	Link	Bond lengths			Bond angles		
					Counts	RMSZ	# Z  > 2	Counts	RMSZ	# Z  > 2
5	OLC	A	511	-	12,12,24	1.94	2 (16%)	12,12,25	1.08	0
2	1PE	A	501	-	15,15,15	0.52	0	14,14,14	0.18	0
3	OLB	A	502	-	21,21,24	0.85	1 (4%)	22,22,25	0.87	1 (4%)
3	OLB	A	504	-	19,19,24	0.81	1 (5%)	19,19,25	0.91	1 (5%)
5	OLC	A	514	-	13,13,24	1.05	2 (15%)	14,14,25	0.88	0
5	OLC	A	516	-	9,9,24	1.16	1 (11%)	9,9,25	1.02	1 (11%)
3	OLB	A	506	-	18,18,24	0.93	2 (11%)	18,19,25	0.94	1 (5%)
5	OLC	A	517	-	24,24,24	0.79	2 (8%)	25,25,25	0.93	1 (4%)
3	OLB	A	507	-	21,21,24	0.84	2 (9%)	22,22,25	0.90	0
3	OLB	A	508	-	21,21,24	0.86	1 (4%)	22,22,25	0.81	1 (4%)
5	OLC	A	510	-	20,20,24	0.88	2 (10%)	21,21,25	0.82	0
3	OLB	A	505	-	17,17,24	0.95	2 (11%)	18,18,25	0.97	1 (5%)
5	OLC	A	515	-	14,14,24	1.02	1 (7%)	15,15,25	0.85	1 (6%)
5	OLC	A	512	-	14,14,24	1.02	2 (14%)	15,15,25	1.01	1 (6%)
3	OLB	A	503	-	18,18,24	0.93	2 (11%)	18,19,25	0.94	1 (5%)
5	OLC	A	513	-	21,21,24	0.85	2 (9%)	22,22,25	1.03	1 (4%)

In the following table, the Chirals column lists the number of chiral outliers, the number of chiral centers analysed, the number of these observed in the model and the number defined in the Chemical Component Dictionary. Similar counts are reported in the Torsion and Rings columns. '-' means no outliers of that kind were identified.

Mol	Type	Chain	Res	Link	Chirals	Torsions	Rings
5	OLC	A	511	-	-	5/10/10/24	-
2	1PE	A	501	-	-	2/13/13/13	-
3	OLB	A	502	-	-	4/21/21/24	-
3	OLB	A	504	-	-	6/18/18/24	-
5	OLC	A	514	-	-	3/13/13/24	-
5	OLC	A	516	-	-	1/8/8/24	-
3	OLB	A	506	-	-	6/18/18/24	-
5	OLC	A	517	-	-	9/24/24/24	-
3	OLB	A	507	-	-	4/21/21/24	-
3	OLB	A	508	-	-	11/21/21/24	-

Continued on next page...



*Continued from previous page...*

Mol	Type	Chain	Res	Link	Chirals	Torsions	Rings
5	OLC	A	510	-	-	4/20/20/24	-
3	OLB	A	505	-	-	8/17/17/24	-
5	OLC	A	515	-	-	4/14/14/24	-
5	OLC	A	512	-	-	6/14/14/24	-
3	OLB	A	503	-	-	9/18/18/24	-
5	OLC	A	513	-	-	7/21/21/24	-

The worst 5 of 25 bond length outliers are listed below:

Mol	Chain	Res	Type	Atoms	Z	Observed(Å)	Ideal(Å)
5	A	511	OLC	O19-C1	5.50	1.40	1.22
5	A	511	OLC	O20-C1	-3.47	1.19	1.30
3	A	508	OLB	O20-C1	2.53	1.40	1.33
3	A	502	OLB	O20-C1	2.52	1.40	1.33
3	A	503	OLB	O20-C1	2.51	1.40	1.33

The worst 5 of 11 bond angle outliers are listed below:

Mol	Chain	Res	Type	Atoms	Z	Observed(°)	Ideal(°)
5	A	513	OLC	O20-C1-C2	2.88	120.94	111.91
5	A	512	OLC	O20-C1-C2	2.51	119.78	111.91
3	A	508	OLB	O20-C1-C2	2.40	119.43	111.91
3	A	505	OLB	O20-C1-C2	2.38	119.39	111.91
3	A	506	OLB	O20-C1-C2	2.35	119.28	111.91

There are no chirality outliers.

5 of 89 torsion outliers are listed below:

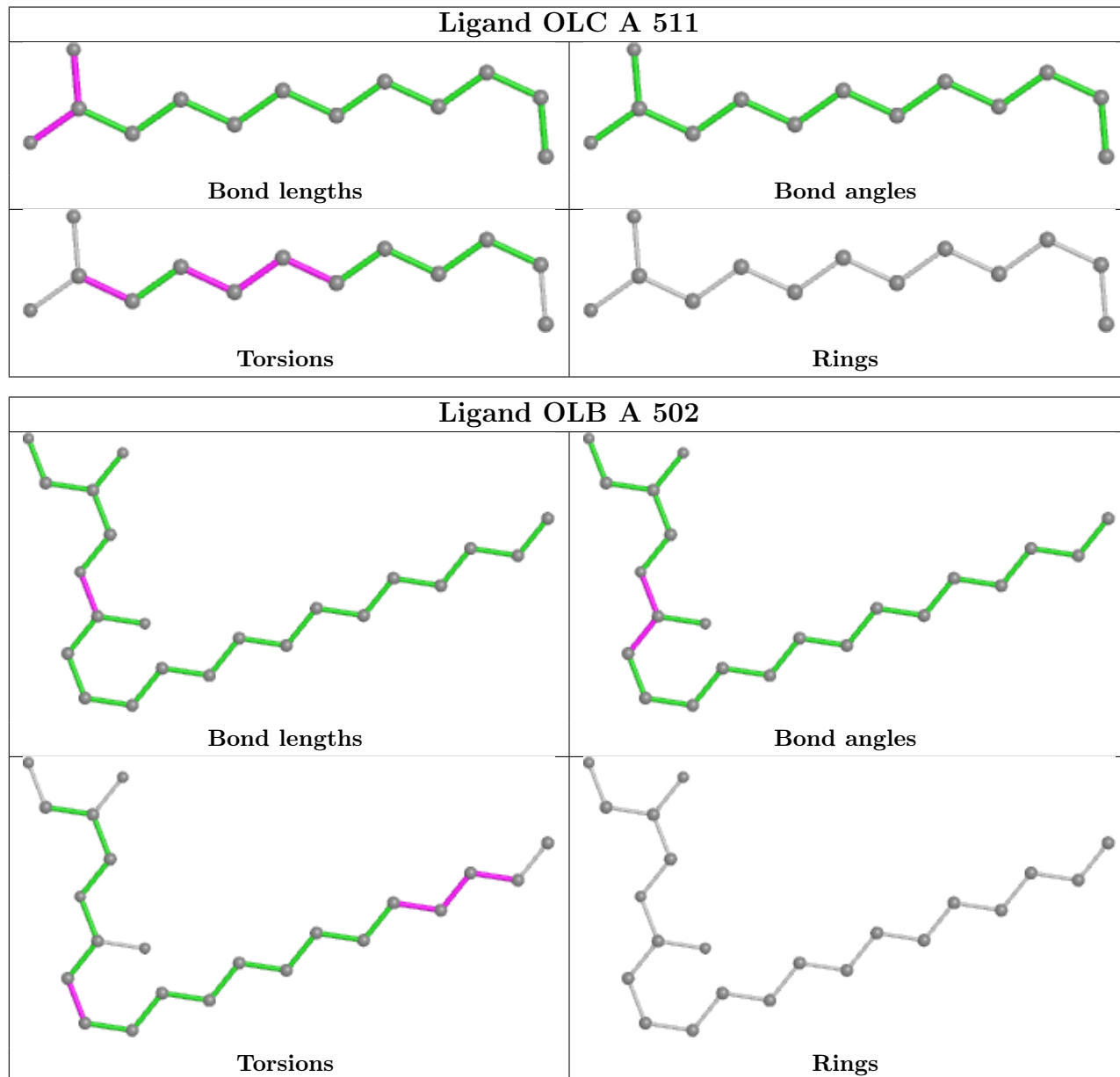
Mol	Chain	Res	Type	Atoms
3	A	503	OLB	C9-C10-C11-C12
3	A	506	OLB	C21-C22-C24-O25
5	A	517	OLC	O20-C21-C22-C24
3	A	504	OLB	O20-C21-C22-C24
3	A	508	OLB	O20-C21-C22-C24

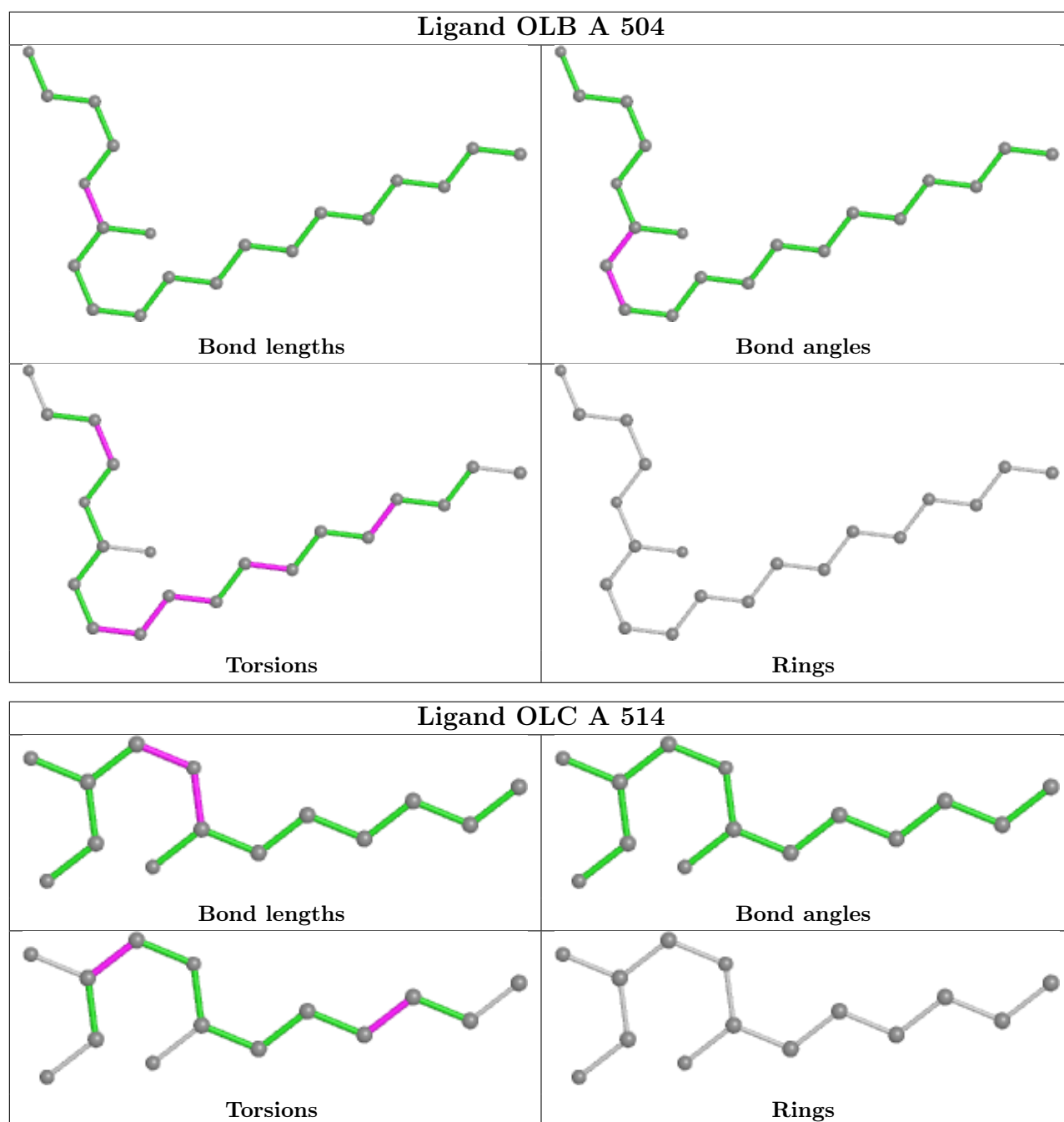
There are no ring outliers.

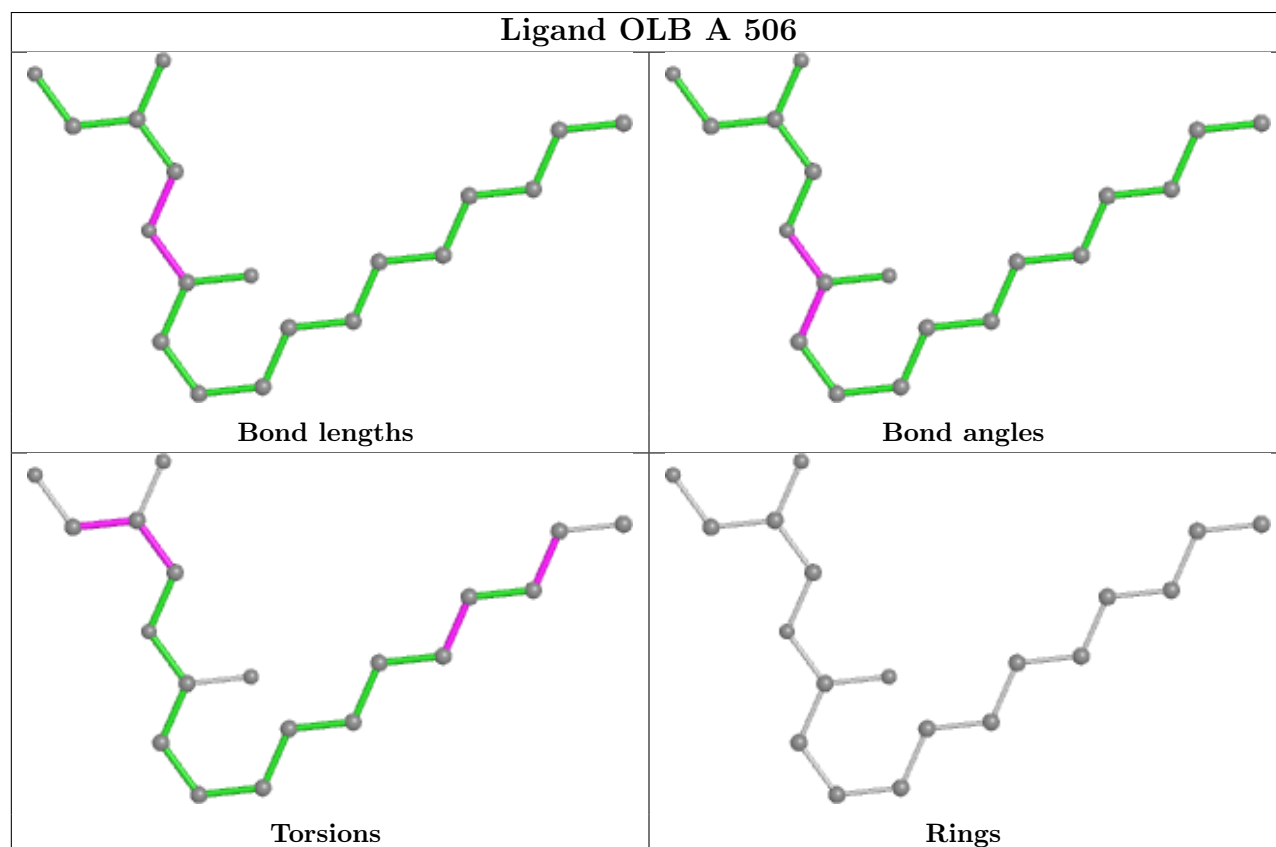
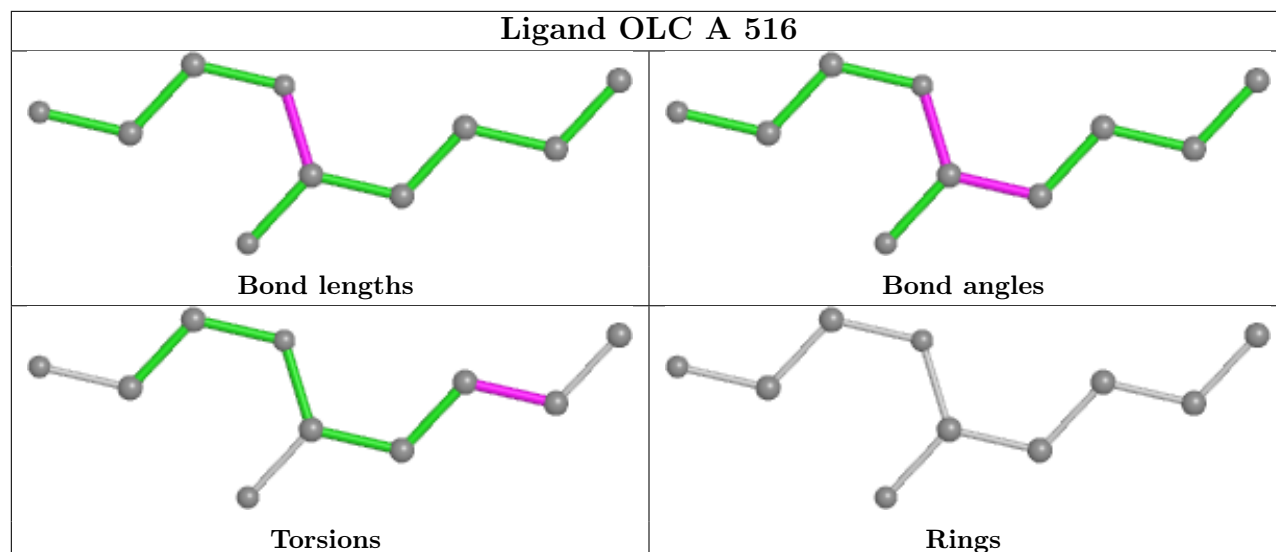
No monomer is involved in short contacts.

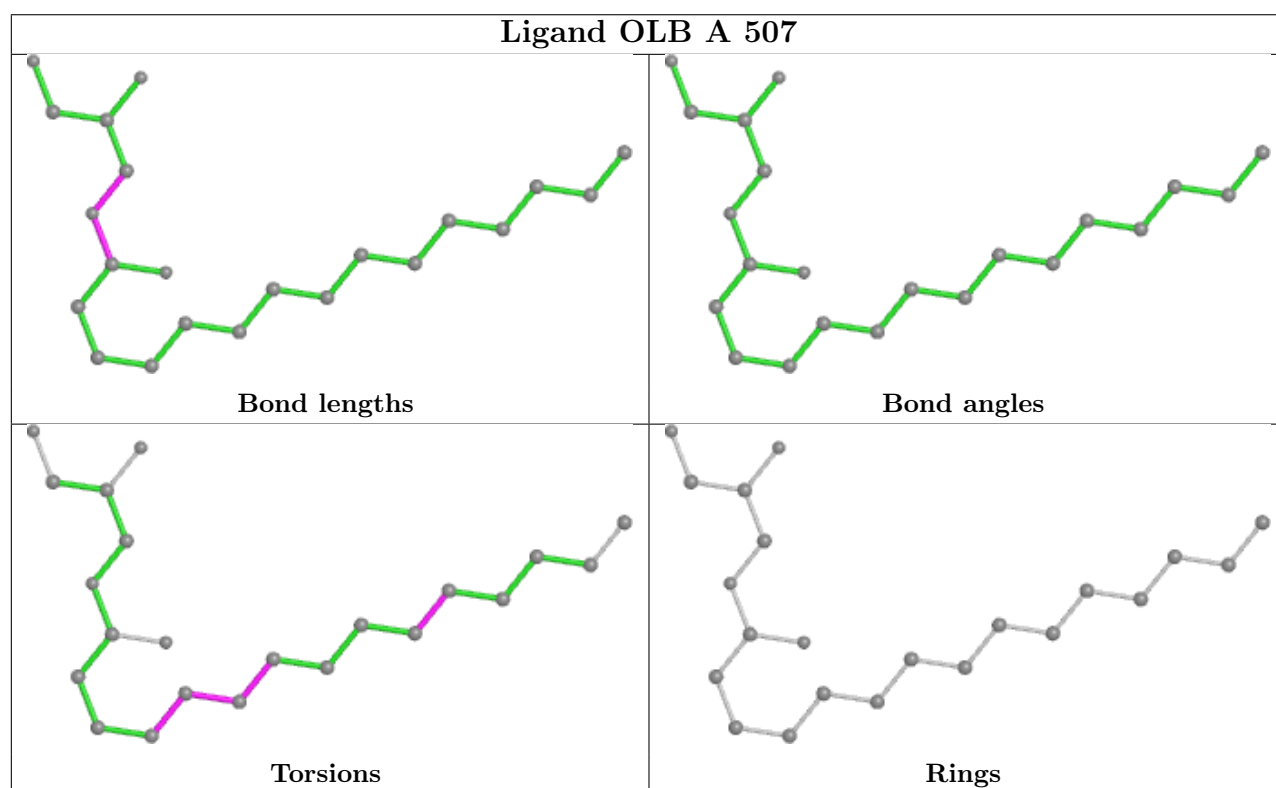
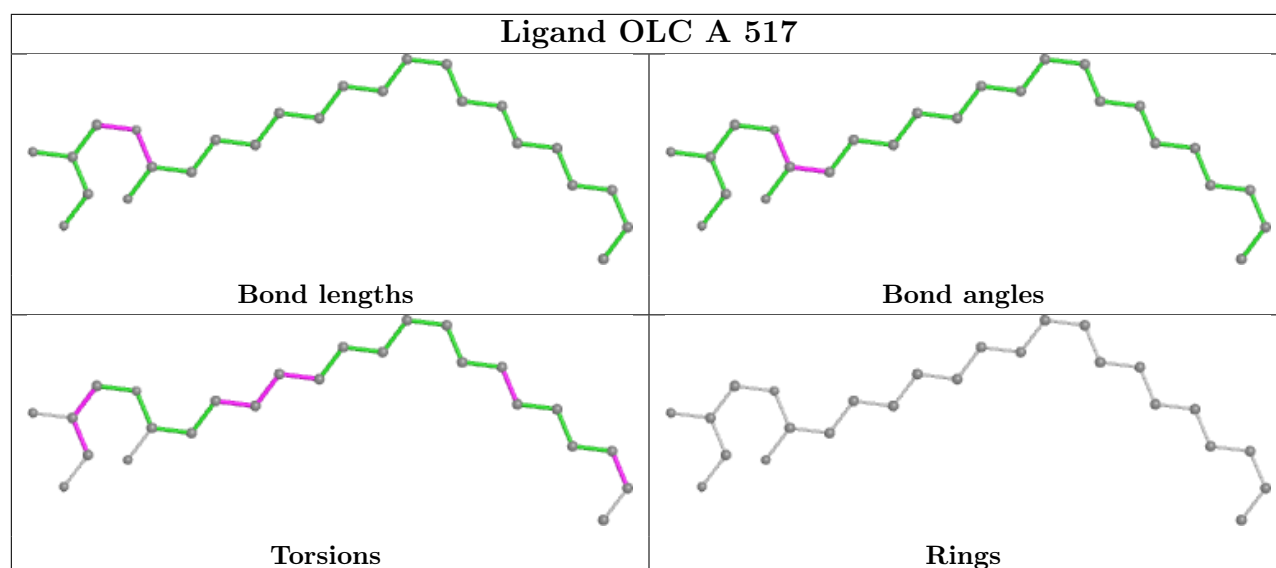
The following is a two-dimensional graphical depiction of Mogul quality analysis of bond lengths, bond angles, torsion angles, and ring geometry for all instances of the Ligand of Interest. In

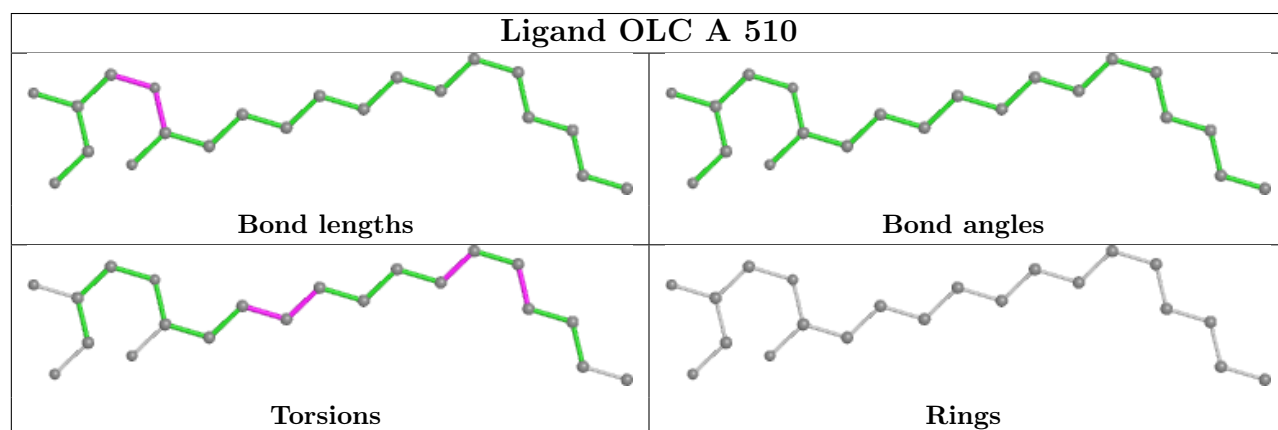
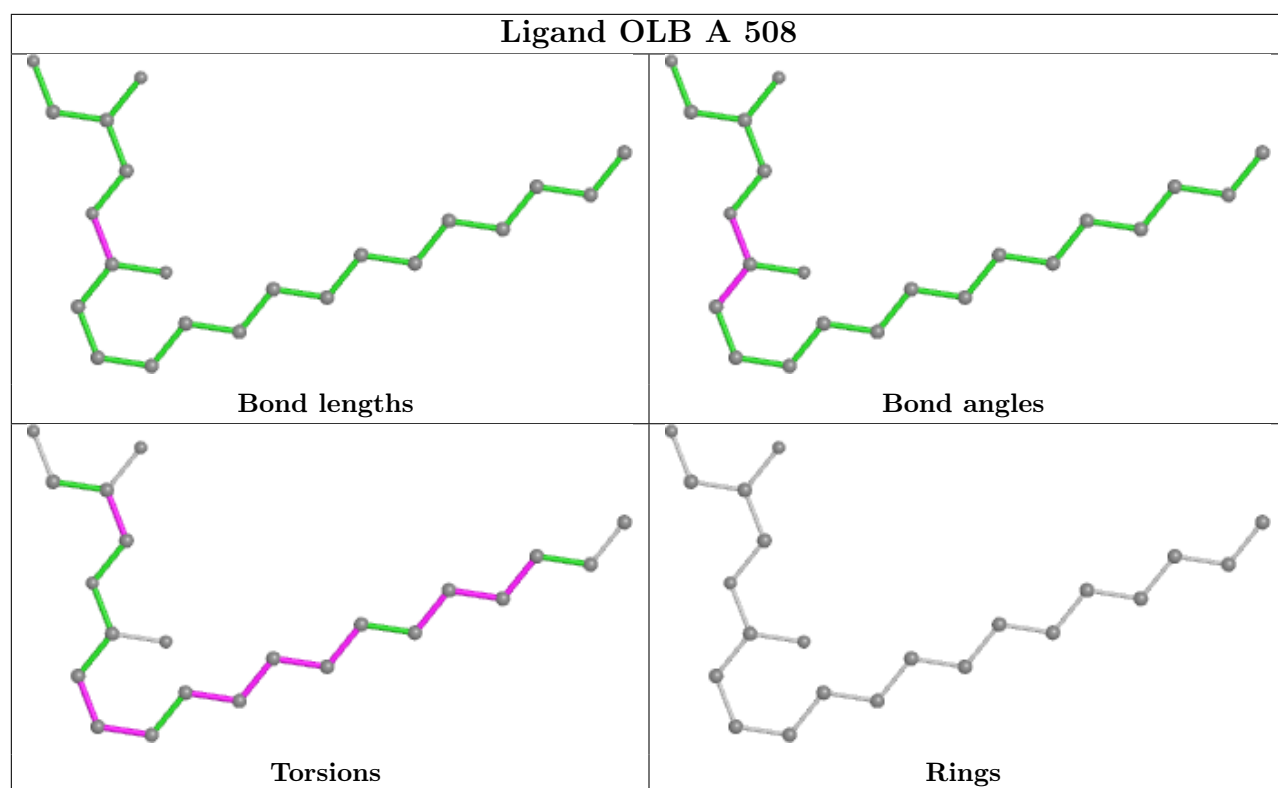
addition, ligands with molecular weight  $> 250$  and outliers as shown on the validation Tables will also be included. For torsion angles, if less than 5% of the Mogul distribution of torsion angles is within 10 degrees of the torsion angle in question, then that torsion angle is considered an outlier. Any bond that is central to one or more torsion angles identified as an outlier by Mogul will be highlighted in the graph. For rings, the root-mean-square deviation (RMSD) between the ring in question and similar rings identified by Mogul is calculated over all ring torsion angles. If the average RMSD is greater than 60 degrees and the minimal RMSD between the ring in question and any Mogul-identified rings is also greater than 60 degrees, then that ring is considered an outlier. The outliers are highlighted in purple. The color gray indicates Mogul did not find sufficient equivalents in the CSD to analyse the geometry.

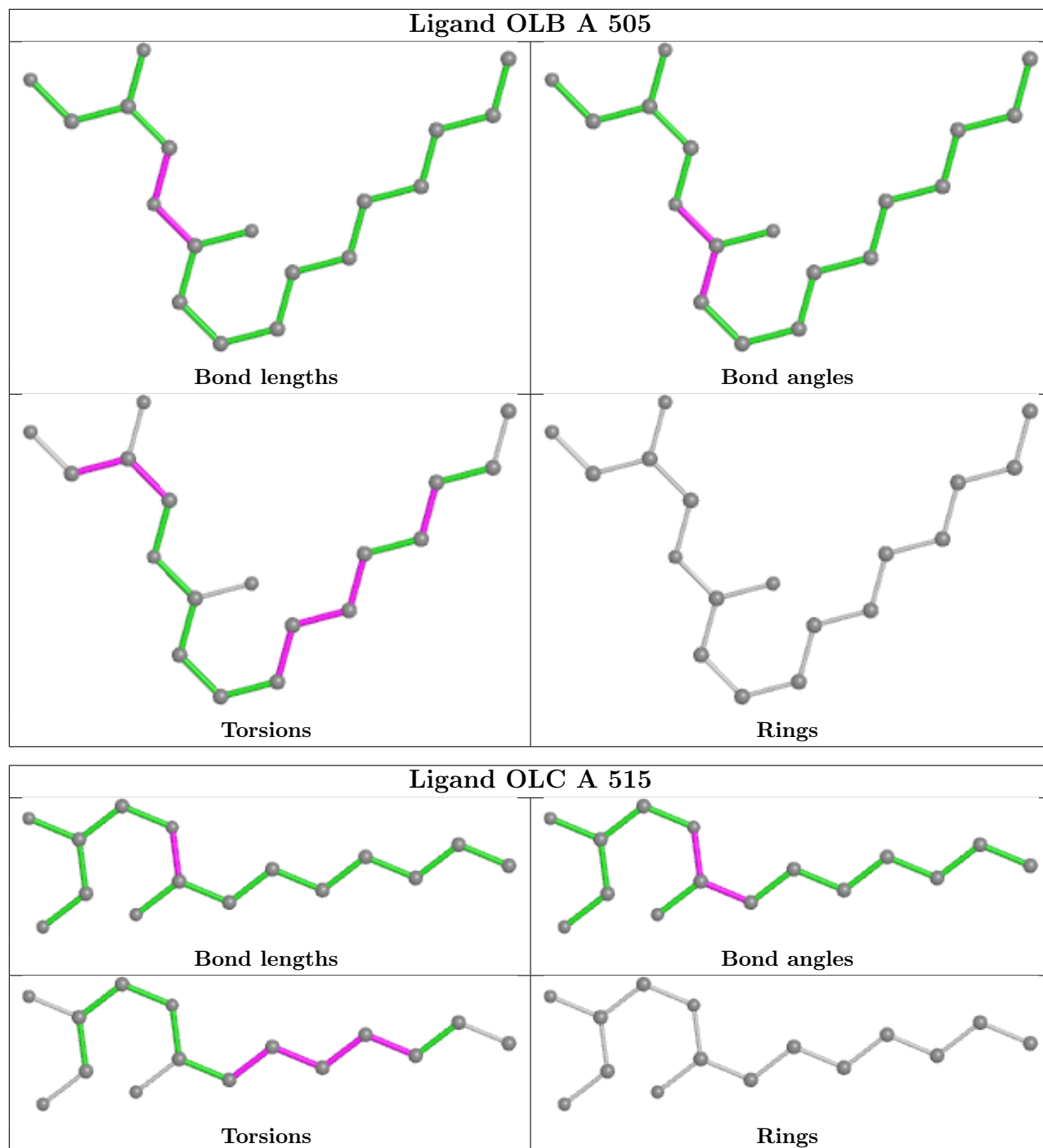


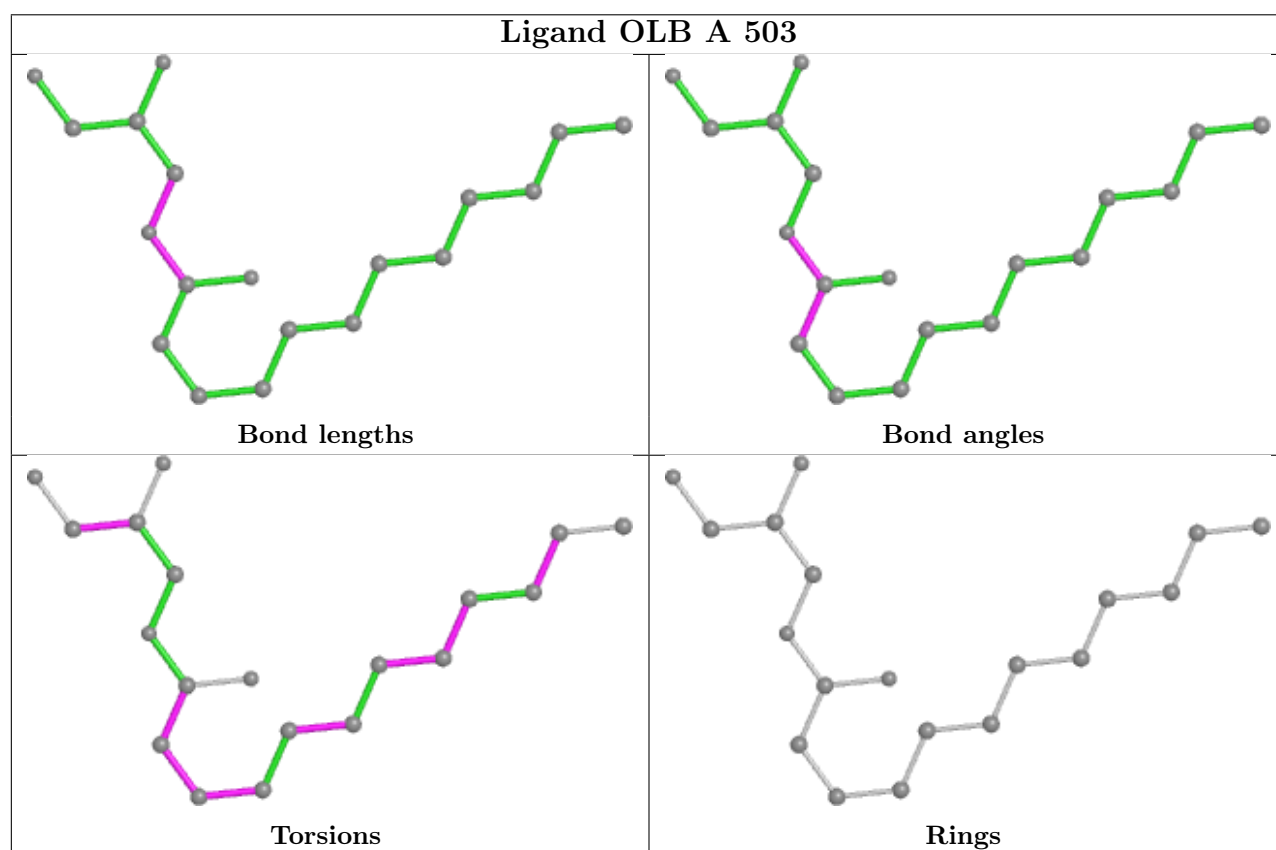
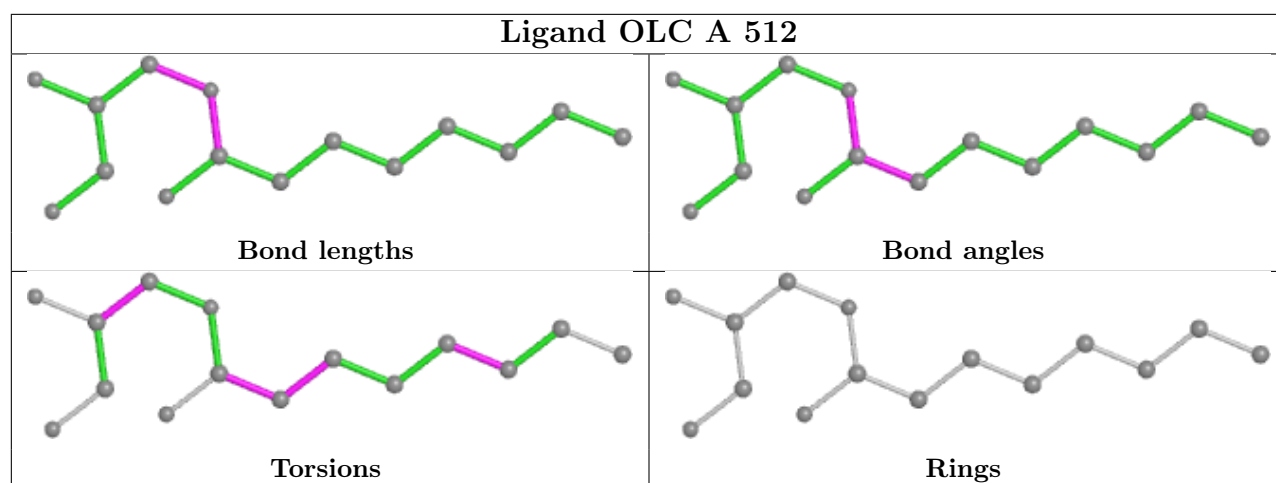




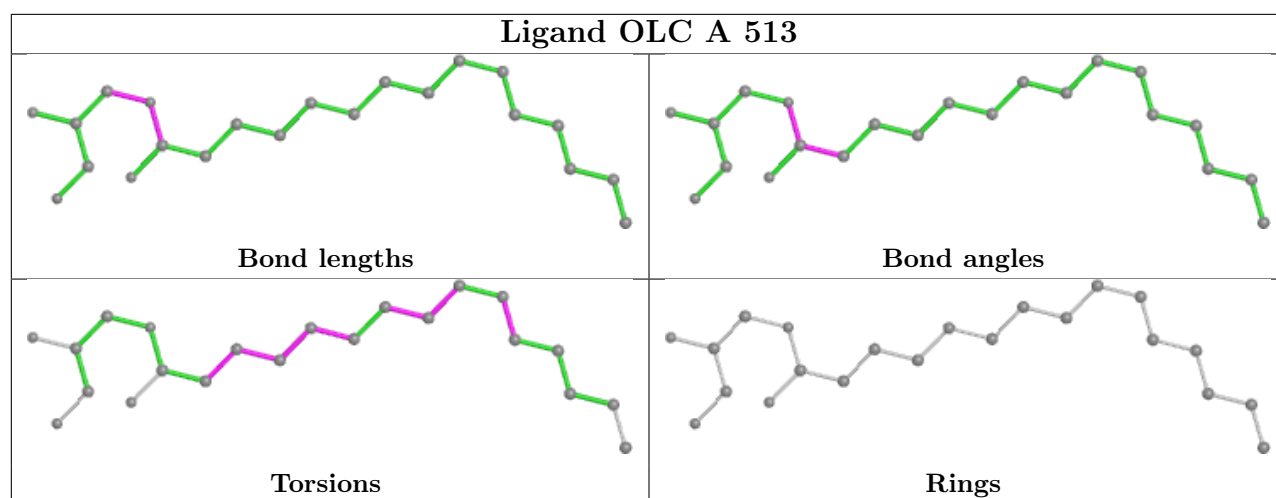












#### 4.7 Other polymers [i](#)

There are no such residues in this entry.

#### 4.8 Polymer linkage issues [i](#)

There are no chain breaks in this entry.

## 5 Fit of model and data [i](#)

### 5.1 Protein, DNA and RNA chains [i](#)

EDS failed to run properly - this section is therefore empty.

### 5.2 Non-standard residues in protein, DNA, RNA chains [i](#)

EDS failed to run properly - this section is therefore empty.

### 5.3 Carbohydrates [i](#)

EDS failed to run properly - this section is therefore empty.

### 5.4 Ligands [i](#)

EDS failed to run properly - this section is therefore empty.

### 5.5 Other polymers [i](#)

EDS failed to run properly - this section is therefore empty.