



Full wwPDB X-ray Structure Validation Report ⓘ

Oct 27, 2023 – 04:07 AM EDT

PDB ID : 3MW0
Title : X-ray structure of the doubly hydroxylated iron complex-NikA species, NikA1/O2
Authors : Cavazza, C.; Bochot, C.; Rousselot-Pailley, P.; Carpentier, P.; Cherrier, M.V.; Martin, L.; Marchi-Delapierre, C.; Fontecilla-Camps, J.C.; Menage, S.
Deposited on : 2010-05-05
Resolution : 2.30 Å(reported)

This is a Full wwPDB X-ray Structure Validation Report for a publicly released PDB entry.

We welcome your comments at validation@mail.wwpdb.org

A user guide is available at

<https://www.wwpdb.org/validation/2017/XrayValidationReportHelp>

with specific help available everywhere you see the ⓘ symbol.

The types of validation reports are described at

<http://www.wwpdb.org/validation/2017/FAQs#types>.

The following versions of software and data (see [references ⓘ](#)) were used in the production of this report:

MolProbity : 4.02b-467
Mogul : 1.8.5 (274361), CSD as541be (2020)
Xtriage (Phenix) : 1.13
EDS : 2.36
buster-report : 1.1.7 (2018)
Percentile statistics : 20191225.v01 (using entries in the PDB archive December 25th 2019)
Refmac : 5.8.0158
CCP4 : 7.0.044 (Gargrove)
Ideal geometry (proteins) : Engh & Huber (2001)
Ideal geometry (DNA, RNA) : Parkinson et al. (1996)
Validation Pipeline (wwPDB-VP) : 2.36

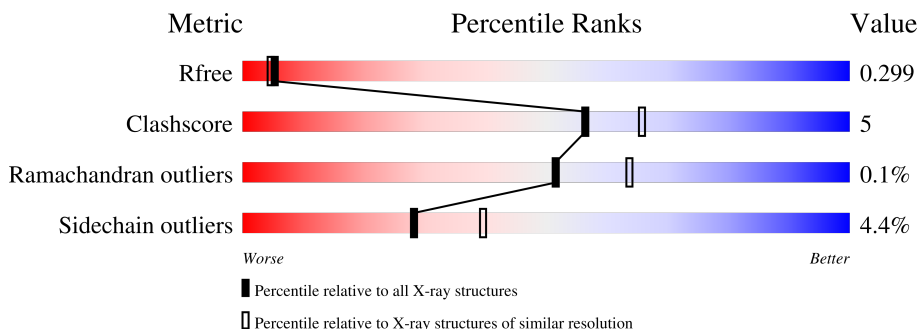
1 Overall quality at a glance

The following experimental techniques were used to determine the structure:

X-RAY DIFFRACTION

The reported resolution of this entry is 2.30 Å.

Percentile scores (ranging between 0-100) for global validation metrics of the entry are shown in the following graphic. The table shows the number of entries on which the scores are based.



Metric	Whole archive (#Entries)	Similar resolution (#Entries, resolution range(Å))
R_{free}	130704	5042 (2.30-2.30)
Clashscore	141614	5643 (2.30-2.30)
Ramachandran outliers	138981	5575 (2.30-2.30)
Sidechain outliers	138945	5575 (2.30-2.30)

The table below summarises the geometric issues observed across the polymeric chains and their fit to the electron density. The red, orange, yellow and green segments of the lower bar indicate the fraction of residues that contain outliers for ≥ 3 , 2, 1 and 0 types of geometric quality criteria respectively. A grey segment represents the fraction of residues that are not modelled. The numeric value for each fraction is indicated below the corresponding segment, with a dot representing fractions $\leq 5\%$.

Mol	Chain	Length	Quality of chain
1	A	502	88% 9% ..
1	B	502	86% 11% ..

2 Entry composition [i](#)

There are 5 unique types of molecules in this entry. The entry contains 8443 atoms, of which 0 are hydrogens and 0 are deuteriums.

In the tables below, the ZeroOcc column contains the number of atoms modelled with zero occupancy, the AltConf column contains the number of residues with at least one atom in alternate conformation and the Trace column contains the number of residues modelled with at most 2 atoms.

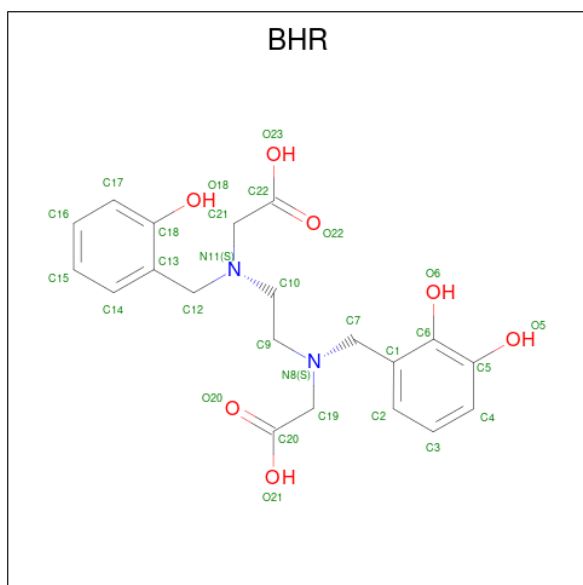
- Molecule 1 is a protein called Nickel-binding periplasmic protein.

Mol	Chain	Residues	Atoms					ZeroOcc	AltConf	Trace
			Total	C	N	O	S			
1	A	498	Total 3957	C 2537	N 668	O 742	S 10	6	2	0
1	B	497	Total 3933	C 2521	N 666	O 736	S 10	5	1	0

- Molecule 2 is FE (III) ION (three-letter code: FE) (formula: Fe).

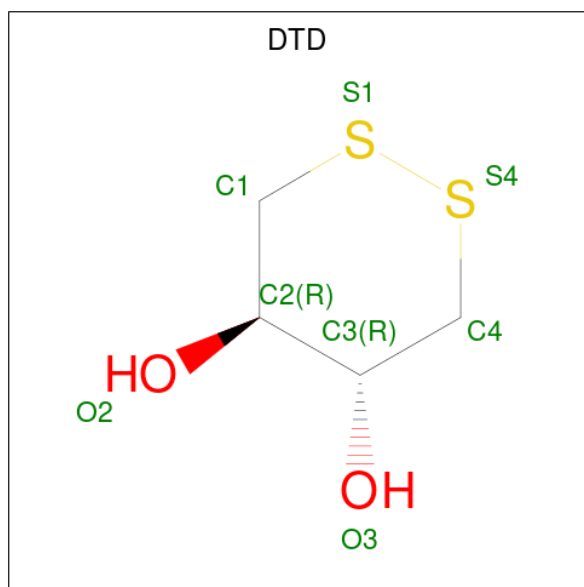
Mol	Chain	Residues	Atoms	ZeroOcc	AltConf
2	A	1	Total Fe 1 1	0	0
2	B	1	Total Fe 1 1	0	0

- Molecule 3 is 2-[2-[carboxymethyl-[(2-hydroxyphenyl)methyl]amino]ethyl-[(2,3-dihydroxyphenyl)methyl]amino]ethanoic acid (three-letter code: BHR) (formula: C₂₀H₂₄N₂O₇).



Mol	Chain	Residues	Atoms				ZeroOcc	AltConf
3	A	1	Total	C	N	O	0	0
			29	20	2	7		
3	B	1	Total	C	N	O	0	0
			29	20	2	7		

- Molecule 4 is DITHIANE DIOL (three-letter code: DTD) (formula: $C_4H_8O_2S_2$).



Mol	Chain	Residues	Atoms				ZeroOcc	AltConf
4	A	1	Total	C	O	S	0	0
			8	4	2	2		
4	B	1	Total	C	O	S	0	0
			8	4	2	2		


- Molecule 5 is water.

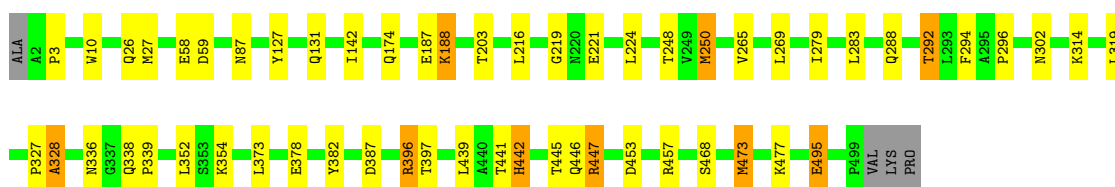
Mol	Chain	Residues	Atoms		ZeroOcc	AltConf
5	A	273	Total	O	0	0
			273	273		
5	B	204	Total	O	0	0
			204	204		

3 Residue-property plots [i](#)


These plots are drawn for all protein, RNA, DNA and oligosaccharide chains in the entry. The first graphic for a chain summarises the proportions of the various outlier classes displayed in the second graphic. The second graphic shows the sequence view annotated by issues in geometry. Residues are color-coded according to the number of geometric quality criteria for which they contain at least one outlier: green = 0, yellow = 1, orange = 2 and red = 3 or more. Stretches of 2 or more consecutive residues without any outlier are shown as a green connector. Residues present in the sample, but not in the model, are shown in grey.

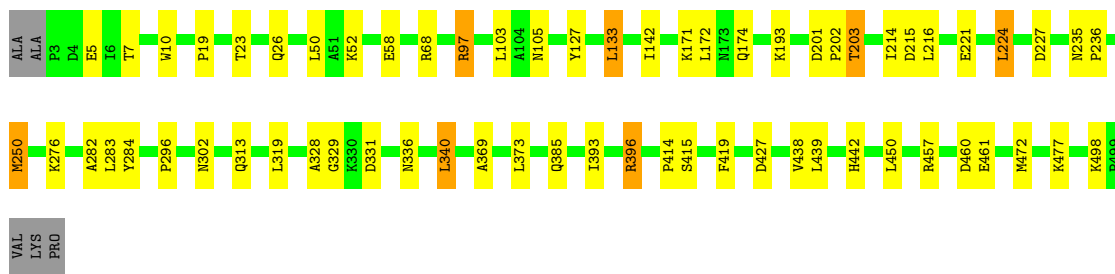
- Molecule 1: Nickel-binding periplasmic protein

Chain A:  88% 9% ..



- Molecule 1: Nickel-binding periplasmic protein

Chain B:  86% 11% ..



4 Data and refinement statistics

Property	Value	Source
Space group	P 21 21 21	Depositor
Cell constants a, b, c, α , β , γ	86.98Å 94.51Å 125.11Å 90.00° 90.00° 90.00°	Depositor
Resolution (Å)	47.26 – 2.30 47.26 – 2.28	Depositor EDS
% Data completeness (in resolution range)	100.0 (47.26-2.30) 99.8 (47.26-2.28)	Depositor EDS
R_{merge}	(Not available)	Depositor
R_{sym}	0.11	Depositor
$\langle I/\sigma(I) \rangle$ ¹	5.03 (at 2.29Å)	Xtrriage
Refinement program	REFMAC 5.5.0102	Depositor
R, R_{free}	0.174 , 0.244 0.256 , 0.299	Depositor DCC
R_{free} test set	2377 reflections (5.00%)	wwPDB-VP
Wilson B-factor (Å ²)	24.7	Xtrriage
Anisotropy	0.131	Xtrriage
Bulk solvent k_{sol} (e/Å ³), B_{sol} (Å ²)	0.35 , 32.8	EDS
L-test for twinning ²	$\langle L \rangle = 0.48$, $\langle L^2 \rangle = 0.31$	Xtrriage
Estimated twinning fraction	No twinning to report.	Xtrriage
F_o, F_c correlation	0.89	EDS
Total number of atoms	8443	wwPDB-VP
Average B, all atoms (Å ²)	24.0	wwPDB-VP

Xtrriage's analysis on translational NCS is as follows: *The largest off-origin peak in the Patterson function is 2.97% of the height of the origin peak. No significant pseudotranslation is detected.*

¹Intensities estimated from amplitudes.

²Theoretical values of $\langle |L| \rangle$, $\langle L^2 \rangle$ for acentric reflections are 0.5, 0.333 respectively for untwinned datasets, and 0.375, 0.2 for perfectly twinned datasets.

5 Model quality [i](#)

5.1 Standard geometry [i](#)

Bond lengths and bond angles in the following residue types are not validated in this section: BHR, FE, DTD

The Z score for a bond length (or angle) is the number of standard deviations the observed value is removed from the expected value. A bond length (or angle) with $|Z| > 5$ is considered an outlier worth inspection. RMSZ is the root-mean-square of all Z scores of the bond lengths (or angles).

Mol	Chain	Bond lengths		Bond angles	
		RMSZ	# Z >5	RMSZ	# Z >5
1	A	0.60	0/4068	0.65	1/5544 (0.0%)
1	B	0.54	0/4039	0.63	2/5502 (0.0%)
All	All	0.57	0/8107	0.64	3/11046 (0.0%)

Chiral center outliers are detected by calculating the chiral volume of a chiral center and verifying if the center is modelled as a planar moiety or with the opposite hand. A planarity outlier is detected by checking planarity of atoms in a peptide group, atoms in a mainchain group or atoms of a sidechain that are expected to be planar.

Mol	Chain	#Chirality outliers	#Planarity outliers
1	A	0	1

There are no bond length outliers.

All (3) bond angle outliers are listed below:

Mol	Chain	Res	Type	Atoms	Z	Observed($^{\circ}$)	Ideal($^{\circ}$)
1	A	396	ARG	NE-CZ-NH2	-5.91	117.35	120.30
1	B	396	ARG	NE-CZ-NH1	-5.86	117.37	120.30
1	B	224	LEU	CA-CB-CG	5.47	127.89	115.30

There are no chirality outliers.

All (1) planarity outliers are listed below:

Mol	Chain	Res	Type	Group
1	A	495[B]	GLU	Mainchain

5.2 Too-close contacts

In the following table, the Non-H and H(model) columns list the number of non-hydrogen atoms and hydrogen atoms in the chain respectively. The H(added) column lists the number of hydrogen atoms added and optimized by MolProbity. The Clashes column lists the number of clashes within the asymmetric unit, whereas Symm-Clashes lists symmetry-related clashes.

Mol	Chain	Non-H	H(model)	H(added)	Clashes	Symm-Clashes
1	A	3957	0	3898	42	1
1	B	3933	0	3862	35	1
2	A	1	0	0	0	0
2	B	1	0	0	0	0
3	A	29	0	20	0	0
3	B	29	0	20	1	0
4	A	8	0	8	1	0
4	B	8	0	8	0	0
5	A	273	0	0	7	2
5	B	204	0	0	4	0
All	All	8443	0	7816	78	3

The all-atom clashscore is defined as the number of clashes found per 1000 atoms (including hydrogen atoms). The all-atom clashscore for this structure is 5.

All (78) close contacts within the same asymmetric unit are listed below, sorted by their clash magnitude.

Atom-1	Atom-2	Interatomic distance (Å)	Clash overlap (Å)
1:A:58:GLU:CB	1:A:59:ASP:O	1.66	1.44
1:A:58:GLU:HB2	1:A:59:ASP:O	0.76	0.89
1:A:292:THR:CG2	1:A:294:PHE:O	2.20	0.89
1:B:105:ASN:HB3	5:B:664:HOH:O	1.76	0.85
3:B:503:BHR:H15	5:B:551:HOH:O	1.75	0.83
1:A:10:TRP:HE1	1:A:26:GLN:HE21	1.31	0.75
1:A:58:GLU:CG	1:A:59:ASP:O	2.34	0.74
1:A:445:THR:HG21	5:B:618:HOH:O	1.87	0.72
1:B:438:VAL:HG12	1:B:450:LEU:HB2	1.72	0.72
1:A:188:LYS:HE3	1:A:188:LYS:H	1.55	0.72
1:B:227:ASP:HB3	1:B:284:TYR:CE2	2.26	0.70
1:A:87:ASN:HD21	1:A:142:ILE:H	1.43	0.64
1:A:292:THR:HG21	1:A:294:PHE:O	1.96	0.63
1:A:58:GLU:CD	1:A:59:ASP:O	2.37	0.63
1:A:250:MET:HE1	1:A:397:THR:HG23	1.81	0.62
1:A:446:GLN:HE21	1:A:446:GLN:HA	1.65	0.61
1:A:453:ASP:O	1:A:457:ARG:HG3	2.00	0.61

Continued on next page...

Continued from previous page...

Atom-1	Atom-2	Interatomic distance (Å)	Clash overlap (Å)
1:B:250:MET:CE	1:B:396:ARG:HA	2.31	0.60
1:A:131:GLN:HG2	5:A:606:HOH:O	2.02	0.60
1:B:438:VAL:HG12	1:B:450:LEU:CB	2.31	0.60
1:A:219:GLY:HA3	4:A:505:DTD:H12	1.83	0.59
1:A:10:TRP:HE1	1:A:26:GLN:NE2	2.01	0.59
1:B:414:PRO:O	1:B:415:SER:HB2	2.04	0.58
1:B:10:TRP:HE1	1:B:26:GLN:HE21	1.52	0.57
1:A:292:THR:HG22	1:A:294:PHE:O	2.03	0.57
1:A:453:ASP:OD2	1:A:457:ARG:HD2	2.05	0.57
1:B:215:ASP:OD1	1:B:477:LYS:HE2	2.05	0.56
1:B:442:HIS:H	1:B:442:HIS:CD2	2.21	0.56
1:B:171:LYS:HB3	1:B:174:GLN:HB2	1.88	0.56
1:B:203:THR:CG2	5:B:606:HOH:O	2.54	0.55
1:B:457:ARG:O	1:B:461:GLU:HG3	2.06	0.55
1:B:438:VAL:CG1	1:B:450:LEU:HB3	2.37	0.55
1:B:296:PRO:HB3	1:B:302:ASN:HD22	1.72	0.55
1:B:52:LYS:HE3	1:B:68:ARG:HG2	1.88	0.54
1:A:221:GLU:OE2	1:A:396:ARG:NH2	2.30	0.54
1:A:327:PRO:O	1:A:328:ALA:C	2.47	0.53
1:A:27:MET:HG3	5:A:777:HOH:O	2.09	0.52
1:B:7:THR:HG22	1:B:214:ILE:HG22	1.92	0.52
1:A:327:PRO:O	1:A:328:ALA:O	2.28	0.52
1:B:103:LEU:HD21	1:B:133:LEU:HD13	1.92	0.51
1:B:414:PRO:HA	1:B:419:PHE:CD1	2.45	0.51
1:B:340:LEU:HD13	1:B:369:ALA:HB2	1.93	0.51
1:B:5:GLU:HG2	1:B:193:LYS:HB3	1.92	0.50
1:B:336:ASN:HD22	1:B:336:ASN:N	2.10	0.50
1:A:477:LYS:HE3	5:A:599:HOH:O	2.11	0.50
1:A:58:GLU:OE2	1:A:59:ASP:O	2.29	0.50
1:A:87:ASN:ND2	1:A:142:ILE:H	2.10	0.49
1:A:495[B]:GLU:CD	1:A:495[B]:GLU:H	2.16	0.48
1:A:446:GLN:HA	1:A:446:GLN:NE2	2.29	0.48
1:B:438:VAL:CG1	1:B:450:LEU:CB	2.90	0.48
1:A:265:VAL:O	1:A:269:LEU:HG	2.13	0.47
1:B:250:MET:HE3	1:B:396:ARG:HA	1.95	0.47
1:B:221:GLU:OE1	1:B:396:ARG:NH1	2.45	0.47
1:B:10:TRP:HE1	1:B:26:GLN:NE2	2.13	0.46
1:A:288:GLN:O	1:A:468:SER:HB2	2.16	0.46
1:A:248:THR:HB	1:A:250:MET:CE	2.46	0.45
1:A:279:ILE:HG12	1:A:283:LEU:HD12	1.99	0.45
1:B:19:PRO:HG3	1:B:142:ILE:HB	1.97	0.45

Continued on next page...

Continued from previous page...

Atom-1	Atom-2	Interatomic distance (Å)	Clash overlap (Å)
1:A:441:THR:O	1:A:447:ARG:NH1	2.38	0.45
1:A:378:GLU:HG2	1:A:382:TYR:CE2	2.51	0.45
1:B:171:LYS:HD3	1:B:174:GLN:HE21	1.81	0.44
1:B:97:ARG:HH21	1:B:97:ARG:HB3	1.81	0.44
1:A:224:LEU:HD23	1:A:473:MET:CE	2.47	0.43
1:B:282:ALA:O	1:B:283:LEU:HD23	2.19	0.43
1:B:414:PRO:O	1:B:415:SER:CB	2.67	0.42
1:A:447:ARG:NH2	5:A:517:HOH:O	2.48	0.42
1:A:336:ASN:N	5:A:656:HOH:O	2.51	0.42
1:B:427:ASP:OD1	1:B:461:GLU:OE1	2.37	0.42
1:A:296:PRO:HB3	1:A:302:ASN:HD22	1.85	0.41
1:B:328:ALA:HA	1:B:329:GLY:HA2	1.65	0.41
1:A:248:THR:HB	1:A:250:MET:HE3	2.03	0.41
1:A:3:PRO:HB2	5:A:736:HOH:O	2.20	0.41
1:B:201:ASP:HA	1:B:202:PRO:HD2	1.96	0.41
1:B:235:ASN:HA	1:B:236:PRO:HD2	1.88	0.41
1:A:338:GLN:HA	1:A:339:PRO:HD3	1.96	0.40
1:A:445:THR:HG23	5:A:719:HOH:O	2.21	0.40
1:B:385:GLN:HG2	1:B:393:ILE:HD13	2.02	0.40

All (3) symmetry-related close contacts are listed below. The label for Atom-2 includes the symmetry operator and encoded unit-cell translations to be applied.

Atom-1	Atom-2	Interatomic distance (Å)	Clash overlap (Å)
5:A:700:HOH:O	5:A:770:HOH:O[3_555]	1.96	0.24
1:A:387:ASP:OD2	1:B:460:ASP:OD2[3_545]	2.09	0.11
5:A:654:HOH:O	5:A:671:HOH:O[3_545]	2.10	0.10

5.3 Torsion angles [\(i\)](#)

5.3.1 Protein backbone [\(i\)](#)

In the following table, the Percentiles column shows the percent Ramachandran outliers of the chain as a percentile score with respect to all X-ray entries followed by that with respect to entries of similar resolution.

The Analysed column shows the number of residues for which the backbone conformation was analysed, and the total number of residues.

Mol	Chain	Analysed	Favoured	Allowed	Outliers	Percentiles	
1	A	498/502 (99%)	481 (97%)	16 (3%)	1 (0%)	47	58
1	B	496/502 (99%)	480 (97%)	16 (3%)	0	100	100
All	All	994/1004 (99%)	961 (97%)	32 (3%)	1 (0%)	51	64

All (1) Ramachandran outliers are listed below:

Mol	Chain	Res	Type
1	A	328	ALA

5.3.2 Protein sidechains [i](#)

In the following table, the Percentiles column shows the percent sidechain outliers of the chain as a percentile score with respect to all X-ray entries followed by that with respect to entries of similar resolution.

The Analysed column shows the number of residues for which the sidechain conformation was analysed, and the total number of residues.

Mol	Chain	Analysed	Rotameric	Outliers	Percentiles	
1	A	422/425 (99%)	404 (96%)	18 (4%)	29	40
1	B	417/425 (98%)	397 (95%)	20 (5%)	25	36
All	All	839/850 (99%)	801 (96%)	38 (4%)	28	39

All (38) residues with a non-rotameric sidechain are listed below:

Mol	Chain	Res	Type
1	A	127	TYR
1	A	174	GLN
1	A	187	GLU
1	A	188	LYS
1	A	203	THR
1	A	216	LEU
1	A	250	MET
1	A	292	THR
1	A	314	LYS
1	A	319	LEU
1	A	352	LEU
1	A	354	LYS
1	A	373	LEU
1	A	439	LEU
1	A	442[A]	HIS

Continued on next page...

Continued from previous page...

Mol	Chain	Res	Type
1	A	442[B]	HIS
1	A	447	ARG
1	A	473	MET
1	B	23	THR
1	B	50	LEU
1	B	58	GLU
1	B	97	ARG
1	B	127	TYR
1	B	133	LEU
1	B	172	LEU
1	B	203	THR
1	B	216	LEU
1	B	224	LEU
1	B	250	MET
1	B	276	LYS
1	B	313	GLN
1	B	319	LEU
1	B	331	ASP
1	B	340	LEU
1	B	373	LEU
1	B	439	LEU
1	B	472	MET
1	B	498	LYS

Sometimes sidechains can be flipped to improve hydrogen bonding and reduce clashes. All (16) such sidechains are listed below:

Mol	Chain	Res	Type
1	A	26	GLN
1	A	87	ASN
1	A	131	GLN
1	A	174	GLN
1	A	197	ASN
1	A	302	ASN
1	A	446	GLN
1	B	25	ASN
1	B	26	GLN
1	B	174	GLN
1	B	302	ASN
1	B	313	GLN
1	B	336	ASN
1	B	442	HIS
1	B	482	ASN

Continued on next page...

Continued from previous page...

Mol	Chain	Res	Type
1	B	496	GLN

5.3.3 RNA [i](#)

There are no RNA molecules in this entry.

5.4 Non-standard residues in protein, DNA, RNA chains [i](#)

There are no non-standard protein/DNA/RNA residues in this entry.

5.5 Carbohydrates [i](#)

There are no monosaccharides in this entry.

5.6 Ligand geometry [i](#)

Of 6 ligands modelled in this entry, 2 are monoatomic - leaving 4 for Mogul analysis.

In the following table, the Counts columns list the number of bonds (or angles) for which Mogul statistics could be retrieved, the number of bonds (or angles) that are observed in the model and the number of bonds (or angles) that are defined in the Chemical Component Dictionary. The Link column lists molecule types, if any, to which the group is linked. The Z score for a bond length (or angle) is the number of standard deviations the observed value is removed from the expected value. A bond length (or angle) with $|Z| > 2$ is considered an outlier worth inspection. RMSZ is the root-mean-square of all Z scores of the bond lengths (or angles).

Mol	Type	Chain	Res	Link	Bond lengths			Bond angles		
					Counts	RMSZ	$\# Z > 2$	Counts	RMSZ	$\# Z > 2$
4	DTD	A	505	-	6,8,8	0.57	0	6,10,10	1.01	0
3	BHR	A	504	2	30,30,30	0.82	0	40,40,40	1.38	5 (12%)
3	BHR	B	503	2	30,30,30	0.90	0	40,40,40	1.54	5 (12%)
4	DTD	B	504	-	6,8,8	0.84	0	6,10,10	0.36	0

In the following table, the Chirals column lists the number of chiral outliers, the number of chiral centers analysed, the number of these observed in the model and the number defined in the Chemical Component Dictionary. Similar counts are reported in the Torsion and Rings columns. '-' means no outliers of that kind were identified.

Mol	Type	Chain	Res	Link	Chirals	Torsions	Rings
4	DTD	A	505	-	-	-	0/0/1/1

Continued on next page...

Continued from previous page...

Mol	Type	Chain	Res	Link	Chirals	Torsions	Rings
3	BHR	A	504	2	-	0/21/21/21	0/2/2/2
3	BHR	B	503	2	-	0/21/21/21	0/2/2/2
4	DTD	B	504	-	-	-	0/0/1/1

There are no bond length outliers.

All (10) bond angle outliers are listed below:

Mol	Chain	Res	Type	Atoms	Z	Observed($^{\circ}$)	Ideal($^{\circ}$)
3	B	503	BHR	C12-C13-C18	5.00	125.44	120.45
3	B	503	BHR	C7-C1-C6	4.81	126.92	120.28
3	A	504	BHR	C7-C1-C6	3.57	125.22	120.28
3	A	504	BHR	C7-N8-C9	-3.48	103.94	111.29
3	A	504	BHR	C7-N8-C19	-3.38	104.80	112.02
3	A	504	BHR	C12-C13-C18	3.22	123.66	120.45
3	B	503	BHR	C7-C1-C2	-2.82	114.54	120.11
3	A	504	BHR	C7-C1-C2	-2.20	115.76	120.11
3	B	503	BHR	C12-C13-C14	-2.06	116.04	120.11
3	B	503	BHR	C12-N11-C10	-2.01	107.04	111.29

There are no chirality outliers.

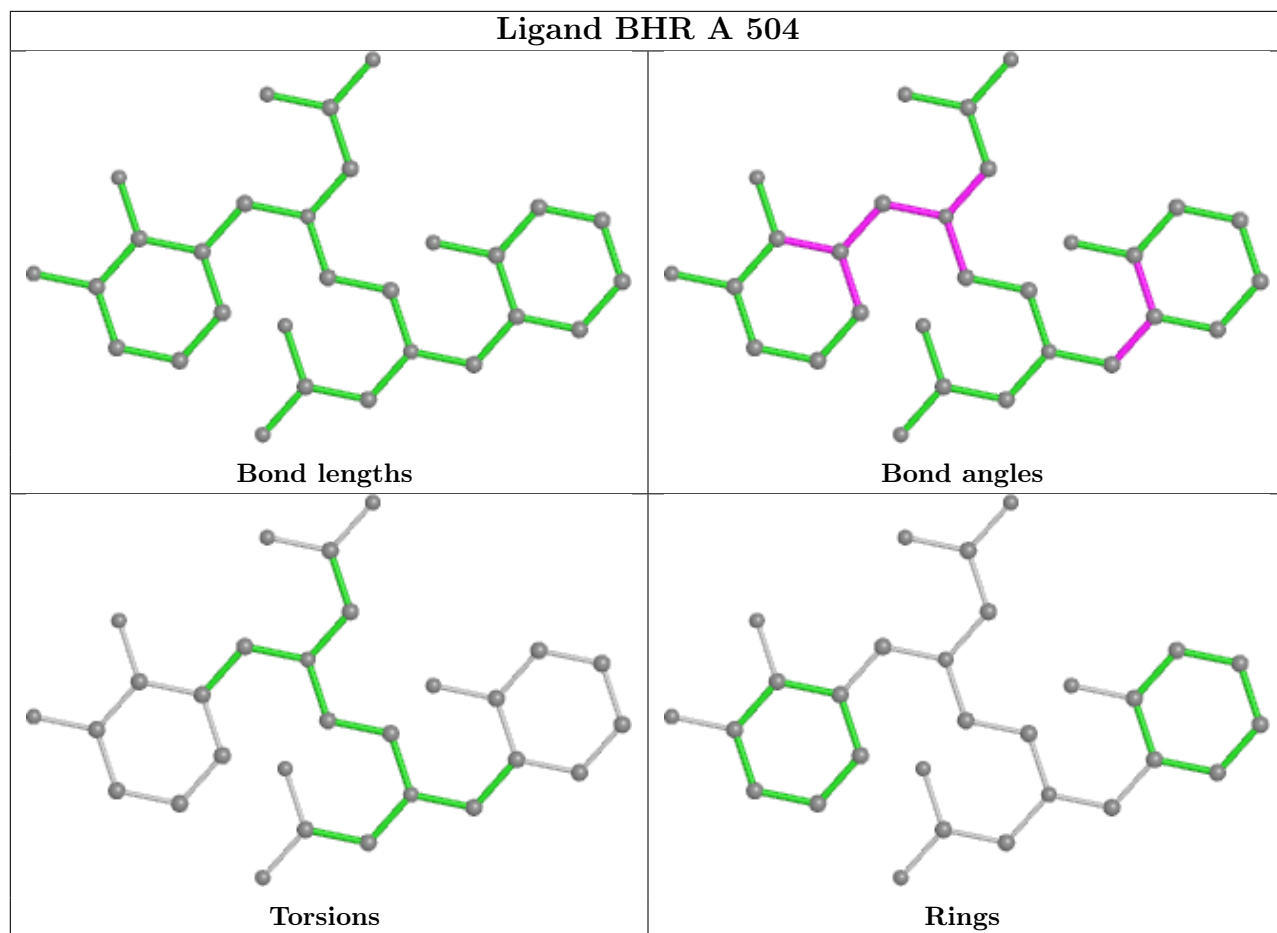
There are no torsion outliers.

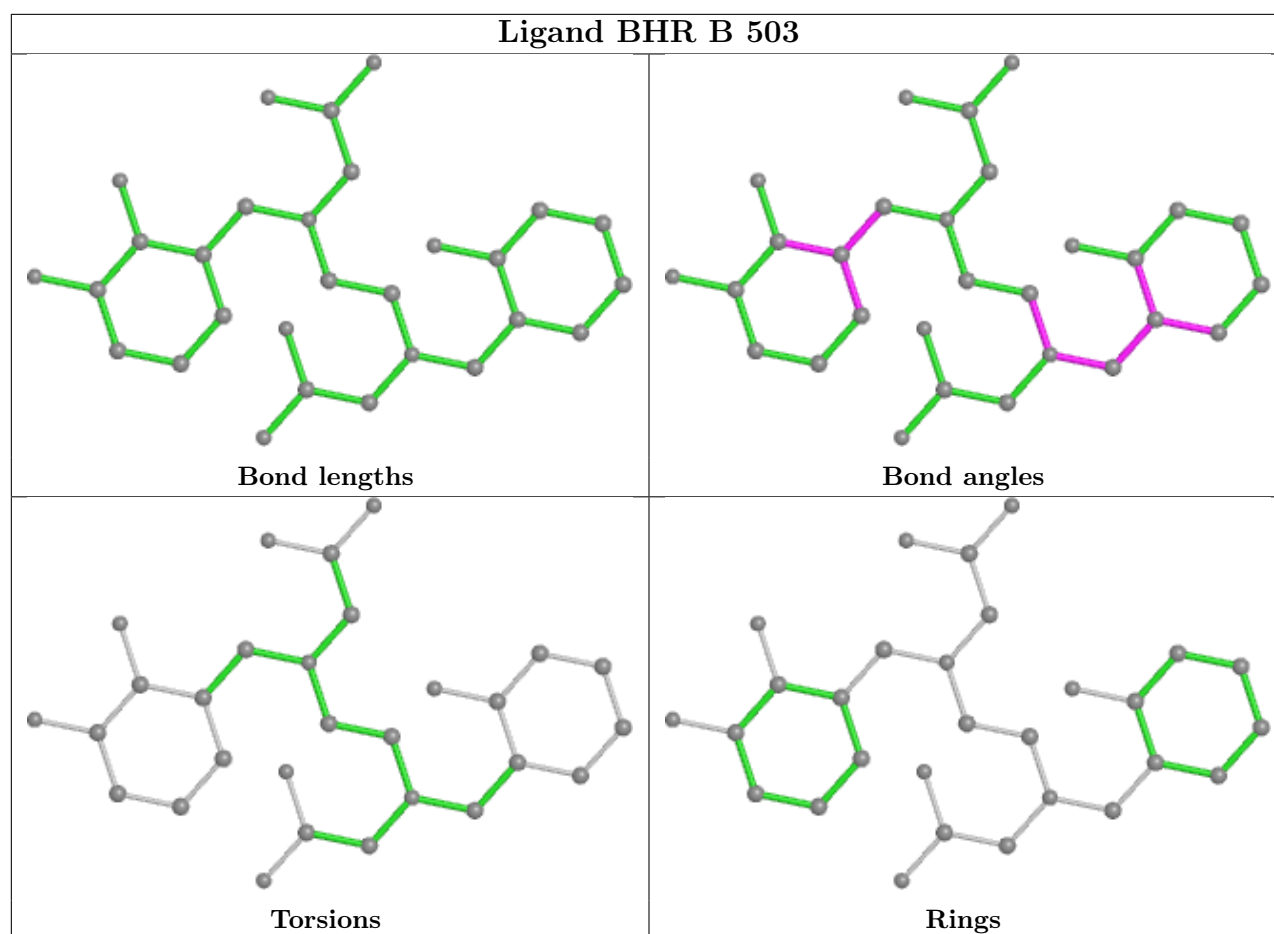
There are no ring outliers.

2 monomers are involved in 2 short contacts:

Mol	Chain	Res	Type	Clashes	Symm-Clashes
4	A	505	DTD	1	0
3	B	503	BHR	1	0

The following is a two-dimensional graphical depiction of Mogul quality analysis of bond lengths, bond angles, torsion angles, and ring geometry for all instances of the Ligand of Interest. In addition, ligands with molecular weight > 250 and outliers as shown on the validation Tables will also be included. For torsion angles, if less than 5% of the Mogul distribution of torsion angles is within 10 degrees of the torsion angle in question, then that torsion angle is considered an outlier. Any bond that is central to one or more torsion angles identified as an outlier by Mogul will be highlighted in the graph. For rings, the root-mean-square deviation (RMSD) between the ring in question and similar rings identified by Mogul is calculated over all ring torsion angles. If the average RMSD is greater than 60 degrees and the minimal RMSD between the ring in question and any Mogul-identified rings is also greater than 60 degrees, then that ring is considered an outlier. The outliers are highlighted in purple. The color gray indicates Mogul did not find sufficient equivalents in the CSD to analyse the geometry.





5.7 Other polymers [i](#)

There are no such residues in this entry.

5.8 Polymer linkage issues [i](#)

There are no chain breaks in this entry.

6 Fit of model and data [i](#)

6.1 Protein, DNA and RNA chains [i](#)

Unable to reproduce the depositors R factor - this section is therefore empty.

6.2 Non-standard residues in protein, DNA, RNA chains [i](#)

Unable to reproduce the depositors R factor - this section is therefore empty.

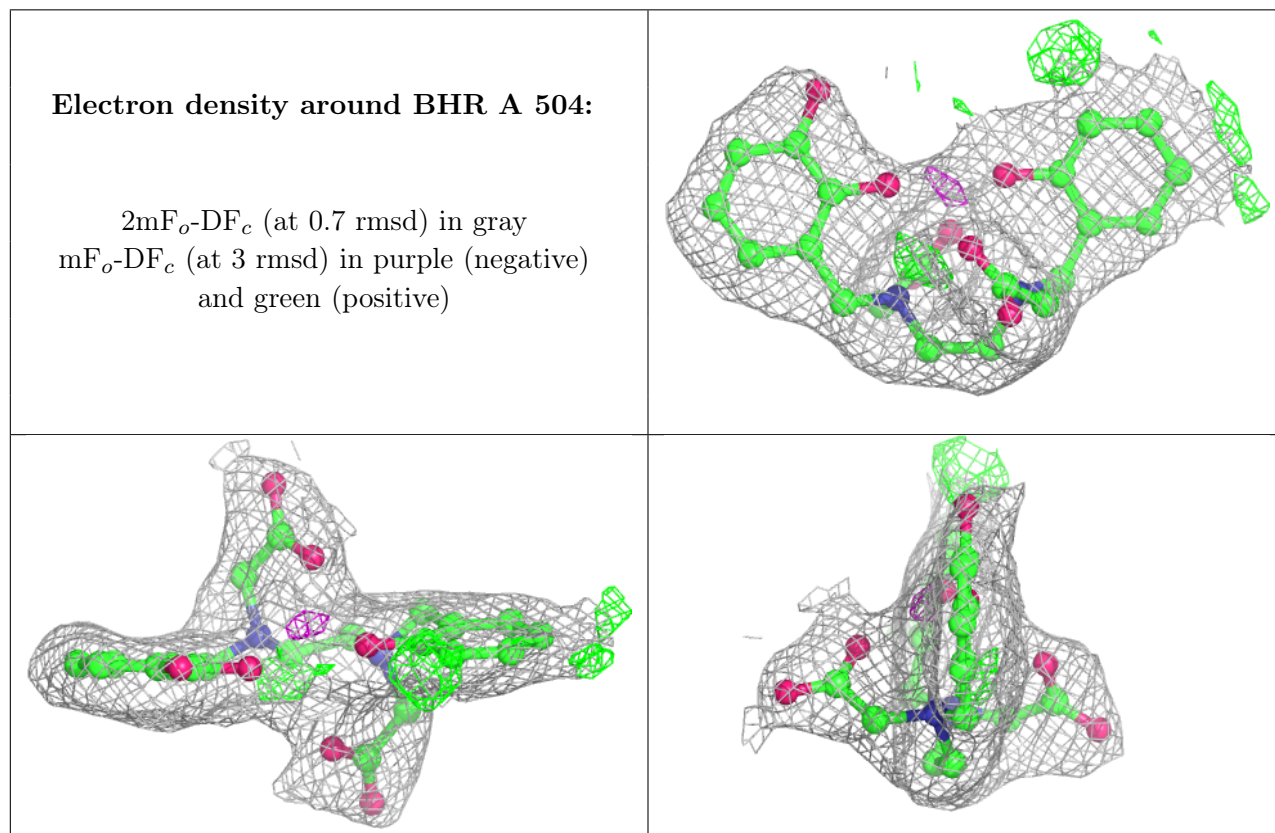
6.3 Carbohydrates [i](#)

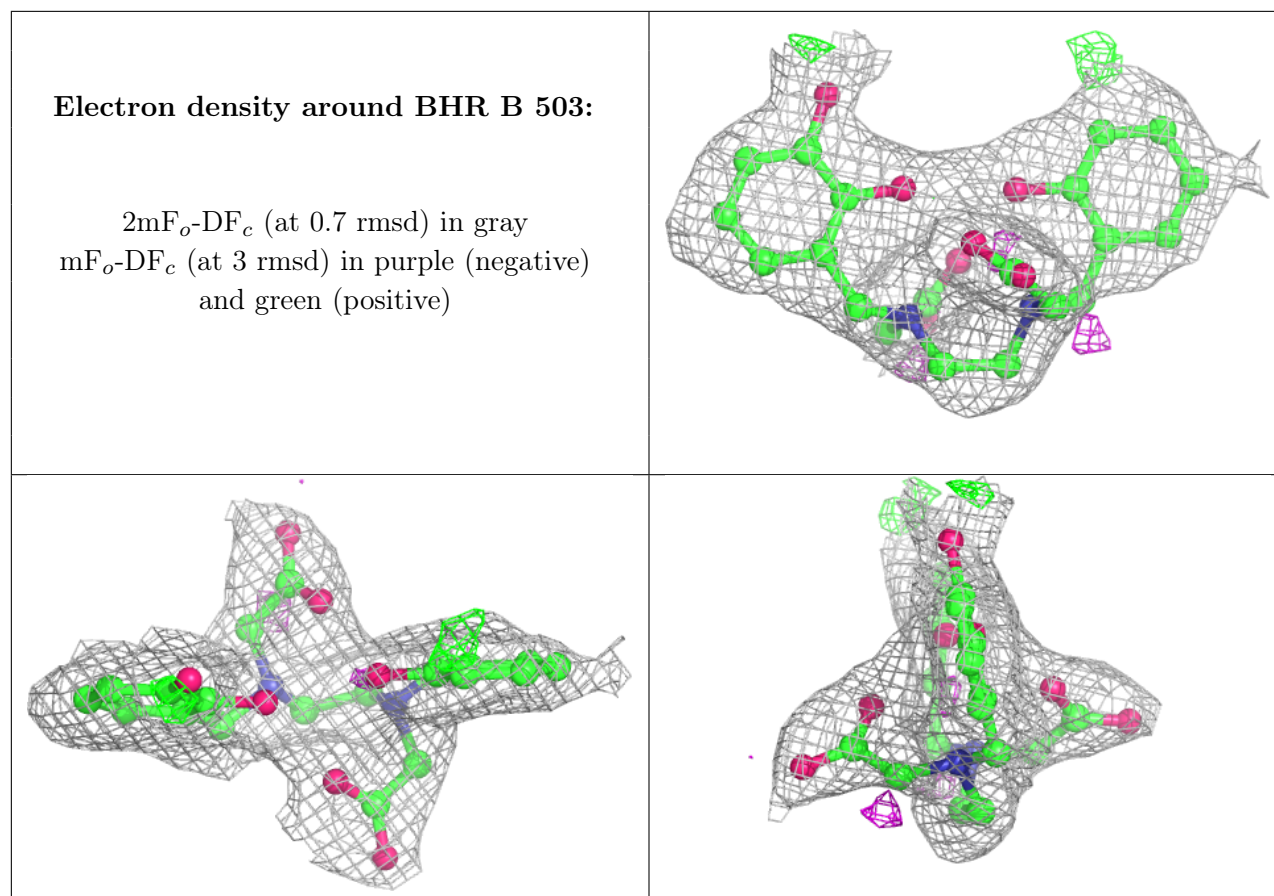
Unable to reproduce the depositors R factor - this section is therefore empty.

6.4 Ligands [i](#)

Unable to reproduce the depositors R factor - this section is therefore empty.

The following is a graphical depiction of the model fit to experimental electron density of all instances of the Ligand of Interest. In addition, ligands with molecular weight > 250 and outliers as shown on the geometry validation Tables will also be included. Each fit is shown from different orientation to approximate a three-dimensional view.





6.5 Other polymers [i](#)

Unable to reproduce the depositors R factor - this section is therefore empty.