



# Full wwPDB X-ray Structure Validation Report ⓘ

Sep 11, 2023 – 12:50 PM EDT

PDB ID : 4MR9  
Title : Crystal structure of the extracellular domain of human GABA(B) receptor bound to the antagonist SCH50911  
Authors : Geng, Y.; Bush, M.; Mosyak, L.; Wang, F.; Fan, Q.R.  
Deposited on : 2013-09-17  
Resolution : 2.35 Å(reported)

This is a Full wwPDB X-ray Structure Validation Report for a publicly released PDB entry.

We welcome your comments at [validation@mail.wwpdb.org](mailto:validation@mail.wwpdb.org)

A user guide is available at

<https://www.wwpdb.org/validation/2017/XrayValidationReportHelp>

with specific help available everywhere you see the ⓘ symbol.

The types of validation reports are described at

<http://www.wwpdb.org/validation/2017/FAQs#types>.

---

The following versions of software and data (see [references ⓘ](#)) were used in the production of this report:

MolProbity : 4.02b-467  
Mogul : 1.8.5 (274361), CSD as541be (2020)  
Xtriage (Phenix) : 1.13  
EDS : 2.35.1  
Percentile statistics : 20191225.v01 (using entries in the PDB archive December 25th 2019)  
Refmac : 5.8.0158  
CCP4 : 7.0.044 (Gargrove)  
Ideal geometry (proteins) : Engh & Huber (2001)  
Ideal geometry (DNA, RNA) : Parkinson et al. (1996)  
Validation Pipeline (wwPDB-VP) : 2.35.1

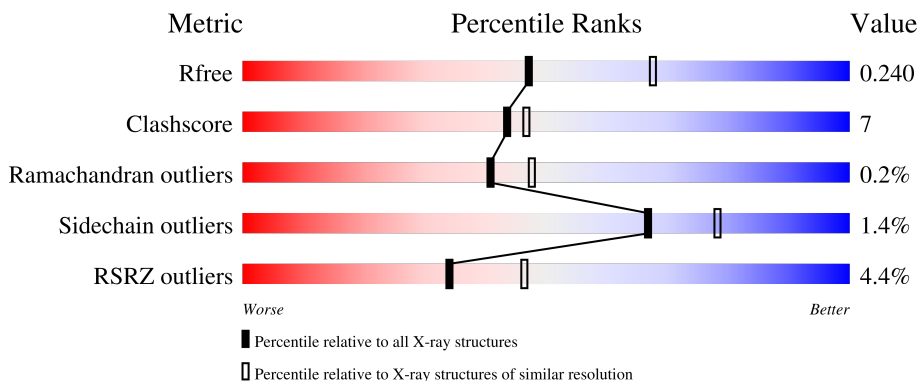
# 1 Overall quality at a glance

The following experimental techniques were used to determine the structure:

*X-RAY DIFFRACTION*

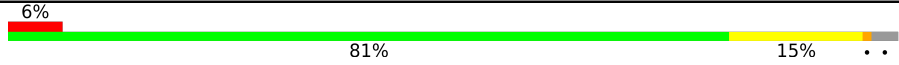

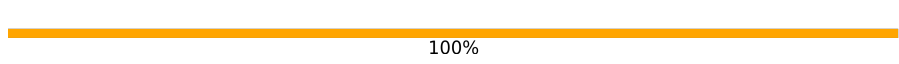
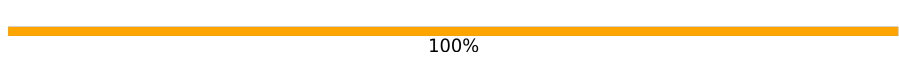
The reported resolution of this entry is 2.35 Å.

Percentile scores (ranging between 0-100) for global validation metrics of the entry are shown in the following graphic. The table shows the number of entries on which the scores are based.



Metric	Whole archive (#Entries)	Similar resolution (#Entries, resolution range(Å))
$R_{free}$	130704	1164 (2.36-2.36)
Clashscore	141614	1232 (2.36-2.36)
Ramachandran outliers	138981	1211 (2.36-2.36)
Sidechain outliers	138945	1212 (2.36-2.36)
RSRZ outliers	127900	1150 (2.36-2.36)

The table below summarises the geometric issues observed across the polymeric chains and their fit to the electron density. The red, orange, yellow and green segments of the lower bar indicate the fraction of residues that contain outliers for  $\geq 3$ , 2, 1 and 0 types of geometric quality criteria respectively. A grey segment represents the fraction of residues that are not modelled. The numeric value for each fraction is indicated below the corresponding segment, with a dot representing fractions  $\leq 5\%$ . The upper red bar (where present) indicates the fraction of residues that have poor fit to the electron density. The numeric value is given above the bar.

Mol	Chain	Length	Quality of chain
1	A	420	
2	B	433	
3	C	4	
4	D	2	

The following table lists non-polymeric compounds, carbohydrate monomers and non-standard

residues in protein, DNA, RNA chains that are outliers for geometric or electron-density-fit criteria:

Mol	Type	Chain	Res	Chirality	Geometry	Clashes	Electron density
6	NAG	A	502	-	-	X	-

## 2 Entry composition [i](#)

There are 7 unique types of molecules in this entry. The entry contains 6831 atoms, of which 0 are hydrogens and 0 are deuteriums.

In the tables below, the ZeroOcc column contains the number of atoms modelled with zero occupancy, the AltConf column contains the number of residues with at least one atom in alternate conformation and the Trace column contains the number of residues modelled with at most 2 atoms.

- Molecule 1 is a protein called Gamma-aminobutyric acid type B receptor subunit 1.

Mol	Chain	Residues	Atoms					ZeroOcc	AltConf	Trace
			Total	C	N	O	S			
1	A	407	3271	2090	551	616	14	0	0	0

There are 8 discrepancies between the modelled and reference sequences:

Chain	Residue	Modelled	Actual	Comment	Reference
A	460	ASP	-	expression tag	UNP Q9UBS5
A	461	TYR	-	expression tag	UNP Q9UBS5
A	462	LYS	-	expression tag	UNP Q9UBS5
A	463	ASP	-	expression tag	UNP Q9UBS5
A	464	ASP	-	expression tag	UNP Q9UBS5
A	465	ASP	-	expression tag	UNP Q9UBS5
A	466	ASP	-	expression tag	UNP Q9UBS5
A	467	LYS	-	expression tag	UNP Q9UBS5

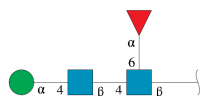
- Molecule 2 is a protein called Gamma-aminobutyric acid type B receptor subunit 2.

Mol	Chain	Residues	Atoms					ZeroOcc	AltConf	Trace
			Total	C	N	O	S			
2	B	403	3214	2052	543	604	15	0	0	0

There are 8 discrepancies between the modelled and reference sequences:

Chain	Residue	Modelled	Actual	Comment	Reference
B	467	ASP	-	expression tag	UNP O75899
B	468	TYR	-	expression tag	UNP O75899
B	469	LYS	-	expression tag	UNP O75899
B	470	ASP	-	expression tag	UNP O75899
B	471	ASP	-	expression tag	UNP O75899
B	472	ASP	-	expression tag	UNP O75899
B	473	ASP	-	expression tag	UNP O75899
B	474	LYS	-	expression tag	UNP O75899

- Molecule 3 is an oligosaccharide called alpha-D-mannopyranose-(1-4)-2-acetamido-2-deoxy-beta-D-glucopyranose-(1-4)-[alpha-L-fucopyranose-(1-6)]2-acetamido-2-deoxy-beta-D-glucopyranose.



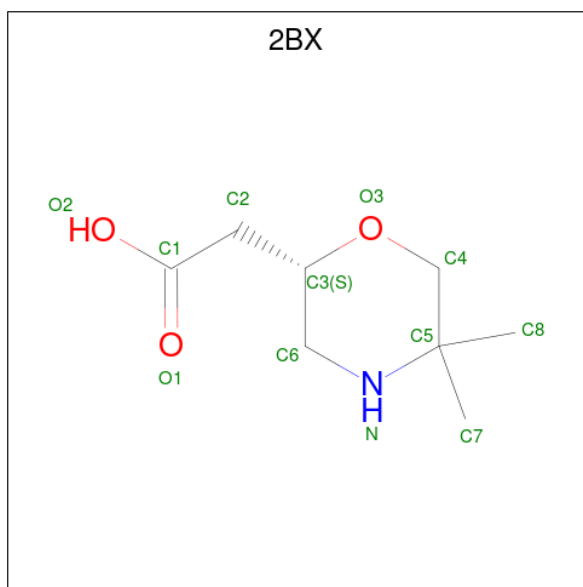
Mol	Chain	Residues	Atoms				ZeroOcc	AltConf	Trace
			Total	C	N	O			
3	C	4	49	28	2	19	0	0	0

- Molecule 4 is an oligosaccharide called alpha-L-fucopyranose-(1-6)-2-acetamido-2-deoxy-beta-D-glucopyranose.



Mol	Chain	Residues	Atoms				ZeroOcc	AltConf	Trace
			Total	C	N	O			
4	D	2	24	14	1	9	0	0	0

- Molecule 5 is [(2S)-5,5-dimethylmorpholin-2-yl]acetic acid (three-letter code: 2BX) (formula: C<sub>8</sub>H<sub>15</sub>NO<sub>3</sub>).



Mol	Chain	Residues	Atoms				ZeroOcc	AltConf
			Total	C	N	O		
5	A	1	12	8	1	3	0	0

- Molecule 6 is 2-acetamido-2-deoxy-beta-D-glucopyranose (three-letter code: NAG) (formula:  $C_8H_{15}NO_6$ ).



Mol	Chain	Residues	Atoms				ZeroOcc	AltConf
			Total	C	N	O		
6	A	1	14	8	1	5	0	0

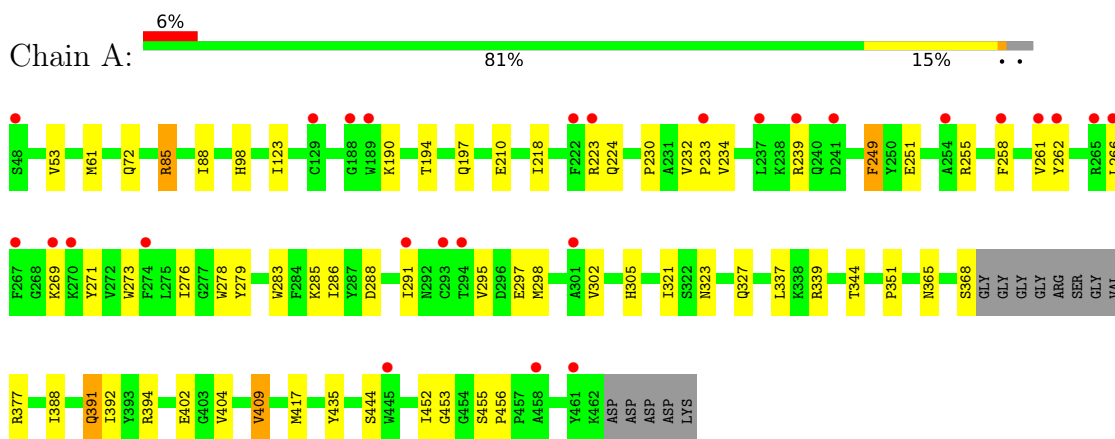
- Molecule 7 is water.

Mol	Chain	Residues	Atoms		ZeroOcc	AltConf
			Total	O		
7	A	113	113	113	0	0
7	B	134	134	134	0	0

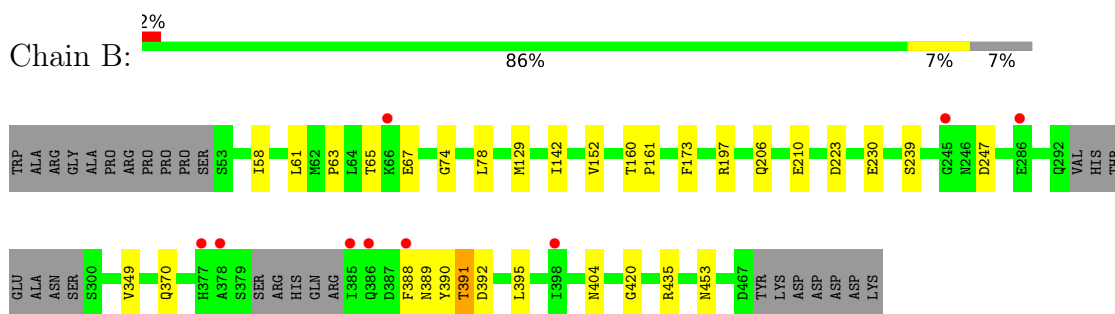
### 3 Residue-property plots

These plots are drawn for all protein, RNA, DNA and oligosaccharide chains in the entry. The first graphic for a chain summarises the proportions of the various outlier classes displayed in the second graphic. The second graphic shows the sequence view annotated by issues in geometry and electron density. Residues are color-coded according to the number of geometric quality criteria for which they contain at least one outlier: green = 0, yellow = 1, orange = 2 and red = 3 or more. A red dot above a residue indicates a poor fit to the electron density ( $RSRZ > 2$ ). Stretches of 2 or more consecutive residues without any outlier are shown as a green connector. Residues present in the sample, but not in the model, are shown in grey.

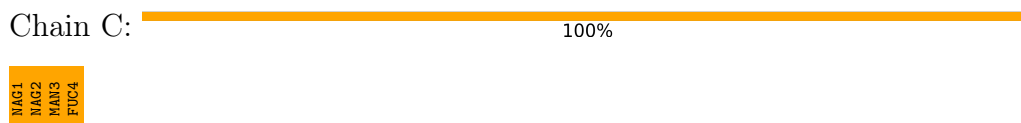
- Molecule 1: Gamma-aminobutyric acid type B receptor subunit 1



- Molecule 2: Gamma-aminobutyric acid type B receptor subunit 2



- Molecule 3: alpha-D-mannopyranose-(1-4)-2-acetamido-2-deoxy-beta-D-glucopyranose-(1-4)-[alpha-L-fucopyranose-(1-6)]2-acetamido-2-deoxy-beta-D-glucopyranose



- Molecule 4: alpha-L-fucopyranose-(1-6)-2-acetamido-2-deoxy-beta-D-glucopyranose



MAG1  
FUC2



## 4 Data and refinement statistics

Property	Value	Source
Space group	P 1 21 1	Depositor
Cell constants a, b, c, $\alpha$ , $\beta$ , $\gamma$	69.50Å 113.07Å 73.22Å 90.00° 96.96° 90.00°	Depositor
Resolution (Å)	72.68 – 2.35 72.68 – 2.35	Depositor EDS
% Data completeness (in resolution range)	99.5 (72.68-2.35) 99.5 (72.68-2.35)	Depositor EDS
$R_{merge}$	0.04	Depositor
$R_{sym}$	0.04	Depositor
$\langle I/\sigma(I) \rangle$ <sup>1</sup>	2.15 (at 2.34Å)	Xtrriage
Refinement program	BUSTER-TNT, BUSTER	Depositor
R, $R_{free}$	0.207 , 0.229 0.216 , 0.240	Depositor DCC
$R_{free}$ test set	2347 reflections (5.04%)	wwPDB-VP
Wilson B-factor (Å <sup>2</sup> )	54.8	Xtrriage
Anisotropy	0.390	Xtrriage
Bulk solvent $k_{sol}$ (e/Å <sup>3</sup> ), $B_{sol}$ (Å <sup>2</sup> )	0.33 , 55.8	EDS
L-test for twinning <sup>2</sup>	$\langle  L  \rangle = 0.49$ , $\langle L^2 \rangle = 0.32$	Xtrriage
Estimated twinning fraction	No twinning to report.	Xtrriage
$F_o, F_c$ correlation	0.95	EDS
Total number of atoms	6831	wwPDB-VP
Average B, all atoms (Å <sup>2</sup> )	69.0	wwPDB-VP

Xtrriage's analysis on translational NCS is as follows: *The largest off-origin peak in the Patterson function is 3.99% of the height of the origin peak. No significant pseudotranslation is detected.*

<sup>1</sup>Intensities estimated from amplitudes.

<sup>2</sup>Theoretical values of  $\langle |L| \rangle$ ,  $\langle L^2 \rangle$  for acentric reflections are 0.5, 0.333 respectively for untwinned datasets, and 0.375, 0.2 for perfectly twinned datasets.

## 5 Model quality [i](#)

### 5.1 Standard geometry [i](#)

Bond lengths and bond angles in the following residue types are not validated in this section: 2BX, MAN, FUC, NAG

The Z score for a bond length (or angle) is the number of standard deviations the observed value is removed from the expected value. A bond length (or angle) with  $|Z| > 5$  is considered an outlier worth inspection. RMSZ is the root-mean-square of all Z scores of the bond lengths (or angles).

Mol	Chain	Bond lengths		Bond angles	
		RMSZ	# Z  >5	RMSZ	# Z  >5
1	A	0.50	0/3354	0.71	1/4547 (0.0%)
2	B	0.52	0/3287	0.68	0/4449
All	All	0.51	0/6641	0.69	1/8996 (0.0%)

There are no bond length outliers.

All (1) bond angle outliers are listed below:

Mol	Chain	Res	Type	Atoms	Z	Observed(°)	Ideal(°)
1	A	453	GLY	N-CA-C	-5.31	99.82	113.10

There are no chirality outliers.

There are no planarity outliers.

### 5.2 Too-close contacts [i](#)

In the following table, the Non-H and H(model) columns list the number of non-hydrogen atoms and hydrogen atoms in the chain respectively. The H(added) column lists the number of hydrogen atoms added and optimized by MolProbity. The Clashes column lists the number of clashes within the asymmetric unit, whereas Symm-Clashes lists symmetry-related clashes.

Mol	Chain	Non-H	H(model)	H(added)	Clashes	Symm-Clashes
1	A	3271	0	3195	55	0
2	B	3214	0	3162	18	0
3	C	49	0	46	8	0
4	D	24	0	23	5	0
5	A	12	0	14	0	0
6	A	14	0	13	7	0
7	A	113	0	0	2	0
7	B	134	0	0	1	0

*Continued on next page...*

*Continued from previous page...*

Mol	Chain	Non-H	H(model)	H(added)	Clashes	Symm-Clashes
All	All	6831	0	6453	80	0

The all-atom clashscore is defined as the number of clashes found per 1000 atoms (including hydrogen atoms). The all-atom clashscore for this structure is 7.

All (80) close contacts within the same asymmetric unit are listed below, sorted by their clash magnitude.

Atom-1	Atom-2	Interatomic distance (Å)	Clash overlap (Å)
1:A:365:ASN:HD21	6:A:502:NAG:C1	1.17	1.58
1:A:323:ASN:HD21	3:C:1:NAG:C1	1.10	1.57
2:B:404:ASN:HD21	4:D:1:NAG:C1	0.89	1.50
1:A:368:SER:O	1:A:377:ARG:N	1.74	1.17
1:A:288:ASP:HB3	1:A:291:ILE:HD12	1.46	0.95
1:A:365:ASN:HD21	6:A:502:NAG:C2	1.79	0.95
3:C:1:NAG:C6	3:C:4:FUC:C1	2.56	0.84
1:A:288:ASP:HB3	1:A:291:ILE:CD1	2.10	0.81
2:B:404:ASN:HD22	4:D:1:NAG:H83	1.47	0.80
1:A:365:ASN:CG	6:A:502:NAG:C1	2.54	0.76
3:C:2:NAG:C4	3:C:3:MAN:C1	2.66	0.72
3:C:1:NAG:C4	3:C:2:NAG:C1	2.68	0.72
1:A:224:GLN:HB3	1:A:233:PRO:HB3	1.71	0.72
2:B:404:ASN:ND2	4:D:1:NAG:C2	2.53	0.70
3:C:3:MAN:C1	3:C:3:MAN:O6	2.39	0.70
1:A:262:TYR:CZ	1:A:297:GLU:OE1	2.46	0.69
1:A:88:ILE:CD1	6:A:502:NAG:H82	2.24	0.67
1:A:210:GLU:OE2	1:A:223:ARG:CZ	2.44	0.66
2:B:453:ASN:HA	7:B:644:HOH:O	2.00	0.62
1:A:88:ILE:HD13	6:A:502:NAG:H82	1.81	0.62
1:A:85:ARG:NH2	1:A:321:ILE:O	2.33	0.61
1:A:321:ILE:HG12	1:A:402:GLU:O	2.01	0.61
1:A:262:TYR:CE1	1:A:297:GLU:OE1	2.55	0.60
1:A:283:TRP:HA	1:A:286:ILE:HD12	1.84	0.58
1:A:323:ASN:ND2	3:C:1:NAG:C2	2.65	0.58
4:D:1:NAG:C6	4:D:2:FUC:C1	2.80	0.58
1:A:302:VAL:O	1:A:305:HIS:HD2	1.88	0.57
1:A:276:ILE:HD11	1:A:279:TYR:CE1	2.40	0.56
1:A:339:ARG:HD2	7:A:667:HOH:O	2.05	0.56
1:A:291:ILE:HG21	1:A:298:MET:HE3	1.88	0.56
2:B:129:MET:HB2	2:B:152:VAL:O	2.06	0.56
1:A:266:LEU:CD2	1:A:273:TRP:HZ2	2.19	0.55
1:A:351:PRO:HB3	1:A:404:VAL:HG23	1.89	0.55

*Continued on next page...*

*Continued from previous page...*

Atom-1	Atom-2	Interatomic distance (Å)	Clash overlap (Å)
2:B:58:ILE:HD12	2:B:129:MET:HG2	1.88	0.54
1:A:266:LEU:HD23	1:A:273:TRP:HZ2	1.72	0.54
1:A:365:ASN:OD1	6:A:502:NAG:C1	2.55	0.54
2:B:65:THR:HG22	2:B:67:GLU:H	1.73	0.54
1:A:388:ILE:O	1:A:392:ILE:HG13	2.07	0.54
3:C:1:NAG:HO6	3:C:4:FUC:C1	2.14	0.51
2:B:206:GLN:HE21	2:B:210:GLU:HG2	1.75	0.51
2:B:389:ASN:C	2:B:391:THR:H	2.15	0.50
1:A:409:VAL:HG23	1:A:417:MET:HB2	1.95	0.49
2:B:61:LEU:HD13	2:B:142:ILE:HD13	1.95	0.49
1:A:53:VAL:HG13	1:A:123:ILE:HG12	1.95	0.48
1:A:276:ILE:HD13	1:A:278:TRP:CE2	2.48	0.48
1:A:455:SER:HB3	1:A:456:PRO:HD2	1.94	0.48
1:A:455:SER:CB	1:A:456:PRO:HD2	2.44	0.48
1:A:337:LEU:HD22	1:A:344:THR:HG21	1.96	0.47
2:B:404:ASN:HD22	4:D:1:NAG:C8	2.20	0.47
1:A:194:THR:OG1	1:A:223:ARG:HG2	2.14	0.47
2:B:230:GLU:HB3	2:B:239:SER:HB3	1.96	0.47
1:A:266:LEU:HD12	1:A:271:TYR:CE1	2.50	0.47
1:A:266:LEU:O	1:A:266:LEU:HG	2.15	0.46
1:A:302:VAL:O	1:A:305:HIS:CD2	2.67	0.46
1:A:288:ASP:O	1:A:291:ILE:HB	2.15	0.46
1:A:262:TYR:CE2	1:A:297:GLU:OE1	2.68	0.46
1:A:190:LYS:HA	1:A:218:ILE:HG12	1.99	0.45
1:A:391:GLN:HE21	1:A:394:ARG:HH22	1.64	0.45
1:A:197:GLN:HB2	1:A:249:PHE:HB3	1.99	0.45
1:A:285:LYS:HA	1:A:295:VAL:HG13	1.99	0.45
2:B:74:GLY:O	2:B:78:LEU:HG	2.16	0.45
1:A:230:PRO:O	1:A:234:VAL:HG23	2.17	0.45
1:A:98:HIS:HD2	7:A:663:HOH:O	2.00	0.44
2:B:197:ARG:NH2	2:B:247:ASP:O	2.50	0.44
2:B:173:PHE:CD2	2:B:420:GLY:HA2	2.53	0.44
3:C:2:NAG:HO4	3:C:3:MAN:C1	2.17	0.43
1:A:269:LYS:HG3	1:A:452:ILE:HB	2.01	0.42
1:A:435:TYR:HB2	1:A:444:SER:HB2	2.01	0.42
1:A:61:MET:CE	1:A:72:GLN:HE21	2.32	0.42
1:A:269:LYS:HE2	1:A:452:ILE:HG22	2.02	0.42
1:A:251:GLU:OE2	1:A:255:ARG:NH2	2.52	0.42
2:B:388:PHE:HB2	2:B:395:LEU:HD23	2.02	0.41
2:B:388:PHE:HD1	2:B:392:ASP:HB3	1.85	0.41
1:A:258:PHE:HA	1:A:261:VAL:HB	2.03	0.41

*Continued on next page...*

Continued from previous page...

Atom-1	Atom-2	Interatomic distance (Å)	Clash overlap (Å)
1:A:298:MET:O	1:A:302:VAL:HG22	2.21	0.41
1:A:232:VAL:HG22	1:A:233:PRO:HD3	2.03	0.41
2:B:160:THR:HA	2:B:161:PRO:HD3	1.94	0.41
1:A:327:GLN:H	1:A:327:GLN:CD	2.24	0.40
1:A:365:ASN:ND2	6:A:502:NAG:C2	2.60	0.40
1:A:61:MET:CE	1:A:72:GLN:NE2	2.84	0.40

There are no symmetry-related clashes.

## 5.3 Torsion angles [i](#)

### 5.3.1 Protein backbone [i](#)

In the following table, the Percentiles column shows the percent Ramachandran outliers of the chain as a percentile score with respect to all X-ray entries followed by that with respect to entries of similar resolution.

The Analysed column shows the number of residues for which the backbone conformation was analysed, and the total number of residues.

Mol	Chain	Analysed	Favoured	Allowed	Outliers	Percentiles	
1	A	403/420 (96%)	390 (97%)	13 (3%)	0	100	100
2	B	397/433 (92%)	381 (96%)	14 (4%)	2 (0%)	29	32
All	All	800/853 (94%)	771 (96%)	27 (3%)	2 (0%)	41	47

All (2) Ramachandran outliers are listed below:

Mol	Chain	Res	Type
2	B	390	TYR
2	B	223	ASP

### 5.3.2 Protein sidechains [i](#)

In the following table, the Percentiles column shows the percent sidechain outliers of the chain as a percentile score with respect to all X-ray entries followed by that with respect to entries of similar resolution.

The Analysed column shows the number of residues for which the sidechain conformation was analysed, and the total number of residues.

Mol	Chain	Analysed	Rotameric	Outliers	Percentiles	
1	A	354/362 (98%)	349 (99%)	5 (1%)	67	78
2	B	349/375 (93%)	344 (99%)	5 (1%)	67	78
All	All	703/737 (95%)	693 (99%)	10 (1%)	67	78

All (10) residues with a non-rotameric sidechain are listed below:

Mol	Chain	Res	Type
1	A	85	ARG
1	A	239	ARG
1	A	249	PHE
1	A	391	GLN
1	A	409	VAL
2	B	63	PRO
2	B	349	VAL
2	B	370	GLN
2	B	391	THR
2	B	435	ARG

Sometimes sidechains can be flipped to improve hydrogen bonding and reduce clashes. All (12) such sidechains are listed below:

Mol	Chain	Res	Type
1	A	72	GLN
1	A	144	ASN
1	A	196	GLN
1	A	236	ASN
1	A	305	HIS
1	A	323	ASN
1	A	327	GLN
1	A	365	ASN
1	A	391	GLN
2	B	150	ASN
2	B	206	GLN
2	B	404	ASN

### 5.3.3 RNA

There are no RNA molecules in this entry.

## 5.4 Non-standard residues in protein, DNA, RNA chains [i](#)

There are no non-standard protein/DNA/RNA residues in this entry.

## 5.5 Carbohydrates [i](#)

6 monosaccharides are modelled in this entry.

In the following table, the Counts columns list the number of bonds (or angles) for which Mogul statistics could be retrieved, the number of bonds (or angles) that are observed in the model and the number of bonds (or angles) that are defined in the Chemical Component Dictionary. The Link column lists molecule types, if any, to which the group is linked. The Z score for a bond length (or angle) is the number of standard deviations the observed value is removed from the expected value. A bond length (or angle) with  $|Z| > 2$  is considered an outlier worth inspection. RMSZ is the root-mean-square of all Z scores of the bond lengths (or angles).

Mol	Type	Chain	Res	Link	Bond lengths			Bond angles		
					Counts	RMSZ	# Z  > 2	Counts	RMSZ	# Z  > 2
3	NAG	C	1	1,3	14,14,15	1.22	1 (7%)	17,19,21	3.34	9 (52%)
3	NAG	C	2	3	14,14,15	1.03	0	17,19,21	2.91	9 (52%)
3	MAN	C	3	3	11,11,12	1.29	1 (9%)	15,15,17	2.93	5 (33%)
3	FUC	C	4	3	10,10,11	1.43	1 (10%)	14,14,16	3.20	3 (21%)
4	NAG	D	1	2,4	14,14,15	1.41	2 (14%)	17,19,21	3.45	9 (52%)
4	FUC	D	2	4	10,10,11	1.02	0	14,14,16	2.15	3 (21%)

In the following table, the Chirals column lists the number of chiral outliers, the number of chiral centers analysed, the number of these observed in the model and the number defined in the Chemical Component Dictionary. Similar counts are reported in the Torsion and Rings columns. '-' means no outliers of that kind were identified.

Mol	Type	Chain	Res	Link	Chirals	Torsions	Rings
3	NAG	C	1	1,3	-	4/6/23/26	0/1/1/1
3	NAG	C	2	3	-	2/6/23/26	0/1/1/1
3	MAN	C	3	3	-	2/2/19/22	1/1/1/1
3	FUC	C	4	3	-	-	0/1/1/1
4	NAG	D	1	2,4	-	2/6/23/26	0/1/1/1
4	FUC	D	2	4	-	-	0/1/1/1

All (5) bond length outliers are listed below:

Mol	Chain	Res	Type	Atoms	Z	Observed(Å)	Ideal(Å)
3	C	1	NAG	O5-C1	-2.91	1.39	1.43

*Continued on next page...*

*Continued from previous page...*

Mol	Chain	Res	Type	Atoms	Z	Observed(Å)	Ideal(Å)
4	D	1	NAG	C7-N2	2.43	1.42	1.34
4	D	1	NAG	C8-C7	2.33	1.55	1.50
3	C	3	MAN	O5-C1	2.31	1.47	1.43
3	C	4	FUC	O2-C2	2.29	1.48	1.43

All (38) bond angle outliers are listed below:

Mol	Chain	Res	Type	Atoms	Z	Observed(°)	Ideal(°)
3	C	4	FUC	O5-C1-C2	9.98	126.17	110.77
4	D	1	NAG	C1-O5-C5	-7.79	101.64	112.19
3	C	1	NAG	O5-C1-C2	7.55	123.21	111.29
4	D	2	FUC	O5-C1-C2	6.72	121.14	110.77
3	C	2	NAG	C3-C4-C5	6.55	121.92	110.24
3	C	3	MAN	C1-C2-C3	-6.36	101.85	109.67
4	D	1	NAG	C1-C2-N2	6.20	121.08	110.49
3	C	1	NAG	O4-C4-C3	-6.14	96.14	110.35
4	D	1	NAG	C4-C3-C2	-6.08	102.11	111.02
3	C	2	NAG	O4-C4-C3	-5.37	97.92	110.35
3	C	3	MAN	O3-C3-C2	-5.25	99.94	109.99
3	C	3	MAN	O5-C1-C2	5.15	118.73	110.77
3	C	4	FUC	O2-C2-C1	4.64	118.65	109.15
3	C	2	NAG	C4-C3-C2	-4.62	104.24	111.02
3	C	1	NAG	O5-C5-C6	-4.32	100.44	107.20
3	C	1	NAG	C4-C3-C2	-3.92	105.27	111.02
3	C	3	MAN	C6-C5-C4	-3.84	104.01	113.00
3	C	1	NAG	C1-O5-C5	3.75	117.28	112.19
3	C	1	NAG	O6-C6-C5	-3.70	98.61	111.29
3	C	2	NAG	O4-C4-C5	-3.58	100.42	109.30
4	D	1	NAG	O6-C6-C5	-3.57	99.03	111.29
4	D	1	NAG	O5-C5-C4	-3.57	102.15	110.83
4	D	1	NAG	C3-C4-C5	3.35	116.21	110.24
3	C	2	NAG	C1-O5-C5	-3.04	108.07	112.19
3	C	4	FUC	O5-C5-C6	-2.99	100.88	107.33
3	C	1	NAG	C6-C5-C4	-2.98	106.02	113.00
3	C	1	NAG	O5-C5-C4	2.83	117.72	110.83
3	C	2	NAG	C8-C7-N2	-2.83	111.31	116.10
4	D	1	NAG	O4-C4-C5	-2.53	103.02	109.30
4	D	1	NAG	C8-C7-N2	2.42	120.19	116.10
3	C	2	NAG	C1-C2-N2	2.36	114.51	110.49
4	D	1	NAG	O4-C4-C3	-2.32	104.98	110.35
3	C	1	NAG	C3-C4-C5	2.32	114.37	110.24
3	C	2	NAG	O5-C1-C2	2.16	114.70	111.29

*Continued on next page...*



Continued from previous page...

Mol	Chain	Res	Type	Atoms	Z	Observed(°)	Ideal(°)
4	D	2	FUC	C1-O5-C5	2.11	117.55	112.78
3	C	3	MAN	C2-C3-C4	2.09	114.52	110.89
4	D	2	FUC	O2-C2-C1	2.09	113.43	109.15
3	C	2	NAG	O5-C5-C6	-2.02	104.04	107.20

There are no chirality outliers.

All (10) torsion outliers are listed below:

Mol	Chain	Res	Type	Atoms
3	C	1	NAG	O5-C5-C6-O6
3	C	3	MAN	O5-C5-C6-O6
3	C	3	MAN	C4-C5-C6-O6
3	C	2	NAG	O5-C5-C6-O6
3	C	1	NAG	C4-C5-C6-O6
3	C	1	NAG	C8-C7-N2-C2
3	C	1	NAG	O7-C7-N2-C2
4	D	1	NAG	C8-C7-N2-C2
4	D	1	NAG	O7-C7-N2-C2
3	C	2	NAG	C4-C5-C6-O6

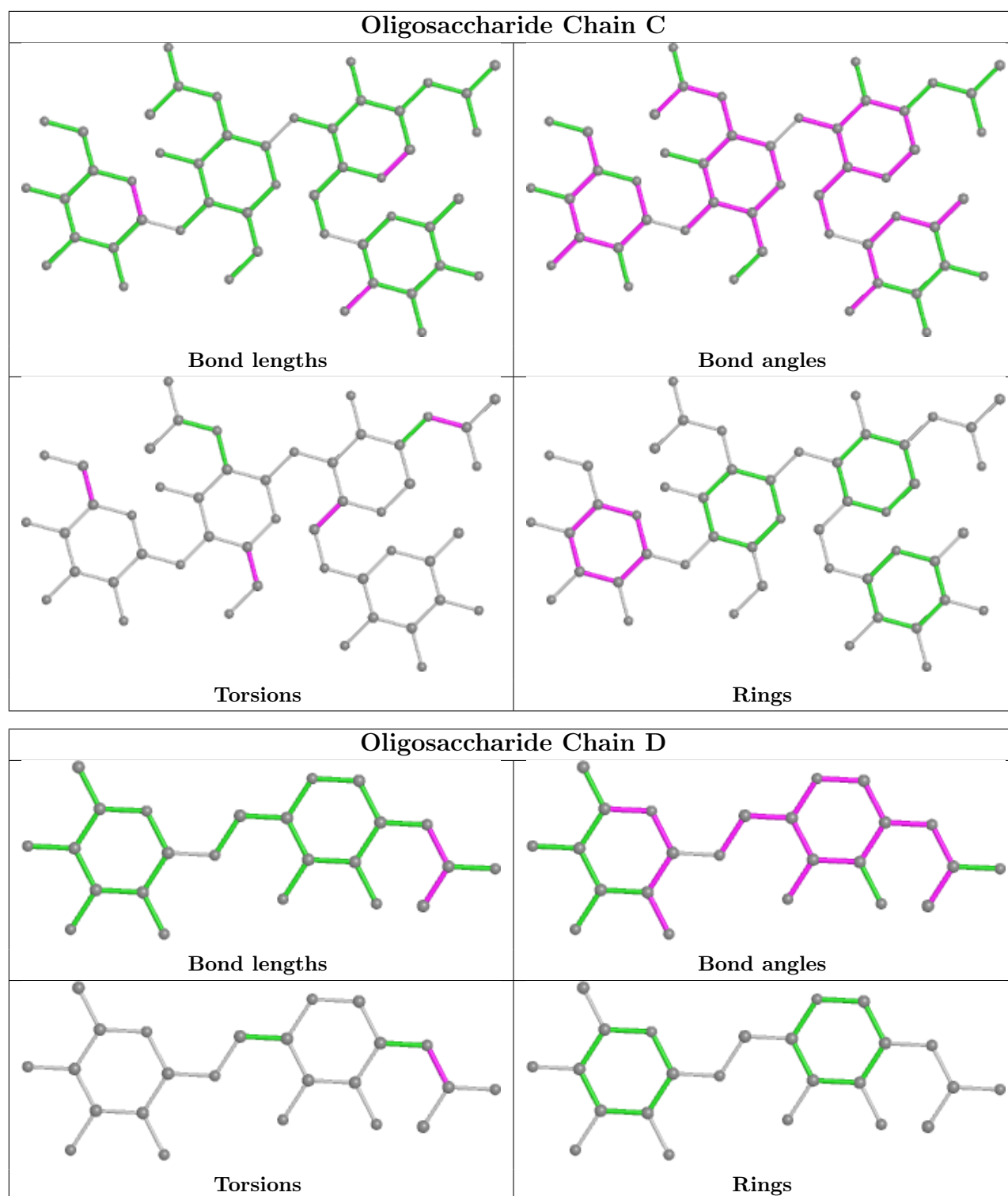
All (1) ring outliers are listed below:

Mol	Chain	Res	Type	Atoms
3	C	3	MAN	C1-C2-C3-C4-C5-O5

6 monomers are involved in 13 short contacts:

Mol	Chain	Res	Type	Clashes	Symm-Clashes
3	C	4	FUC	2	0
3	C	2	NAG	3	0
4	D	1	NAG	5	0
4	D	2	FUC	1	0
3	C	3	MAN	3	0
3	C	1	NAG	5	0

The following is a two-dimensional graphical depiction of Mogul quality analysis of bond lengths, bond angles, torsion angles, and ring geometry for oligosaccharide.



## 5.6 Ligand geometry [i](#)

2 ligands are modelled in this entry.

In the following table, the Counts columns list the number of bonds (or angles) for which Mogul statistics could be retrieved, the number of bonds (or angles) that are observed in the model and

the number of bonds (or angles) that are defined in the Chemical Component Dictionary. The Link column lists molecule types, if any, to which the group is linked. The Z score for a bond length (or angle) is the number of standard deviations the observed value is removed from the expected value. A bond length (or angle) with  $|Z| > 2$  is considered an outlier worth inspection. RMSZ is the root-mean-square of all Z scores of the bond lengths (or angles).

Mol	Type	Chain	Res	Link	Bond lengths			Bond angles		
					Counts	RMSZ	# Z  > 2	Counts	RMSZ	# Z  > 2
5	2BX	A	501	-	10,12,12	0.77	0	11,17,17	1.42	2 (18%)
6	NAG	A	502	1	14,14,15	1.01	0	17,19,21	2.44	5 (29%)

In the following table, the Chirals column lists the number of chiral outliers, the number of chiral centers analysed, the number of these observed in the model and the number defined in the Chemical Component Dictionary. Similar counts are reported in the Torsion and Rings columns. '-' means no outliers of that kind were identified.

Mol	Type	Chain	Res	Link	Chirals	Torsions	Rings
5	2BX	A	501	-	-	0/4/16/16	0/1/1/1
6	NAG	A	502	1	-	0/6/23/26	0/1/1/1

There are no bond length outliers.

All (7) bond angle outliers are listed below:

Mol	Chain	Res	Type	Atoms	Z	Observed(°)	Ideal(°)
6	A	502	NAG	C1-O5-C5	-5.96	104.12	112.19
6	A	502	NAG	C2-N2-C7	-5.64	114.88	122.90
6	A	502	NAG	C1-C2-N2	3.70	116.81	110.49
5	A	501	2BX	O2-C1-O1	-2.99	115.86	123.30
6	A	502	NAG	O5-C5-C4	-2.39	105.01	110.83
5	A	501	2BX	C4-O3-C3	2.13	115.36	112.18
6	A	502	NAG	O5-C1-C2	2.00	114.45	111.29

There are no chirality outliers.

There are no torsion outliers.

There are no ring outliers.

1 monomer is involved in 7 short contacts:

Mol	Chain	Res	Type	Clashes	Symm-Clashes
6	A	502	NAG	7	0

## 5.7 Other polymers [i](#)

There are no such residues in this entry.

## 5.8 Polymer linkage issues [i](#)

There are no chain breaks in this entry.

## 6 Fit of model and data

### 6.1 Protein, DNA and RNA chains

In the following table, the column labelled ‘#RSRZ > 2’ contains the number (and percentage) of RSRZ outliers, followed by percent RSRZ outliers for the chain as percentile scores relative to all X-ray entries and entries of similar resolution. The OWAB column contains the minimum, median, 95<sup>th</sup> percentile and maximum values of the occupancy-weighted average B-factor per residue. The column labelled ‘Q < 0.9’ lists the number of (and percentage) of residues with an average occupancy less than 0.9.

Mol	Chain	Analysed	<RSRZ>	#RSRZ>2	OWAB(Å <sup>2</sup> )	Q<0.9
1	A	407/420 (96%)	0.64	27 (6%) 18 26	41, 68, 112, 122	0
2	B	403/433 (93%)	0.42	9 (2%) 62 72	37, 61, 93, 135	0
All	All	810/853 (94%)	0.53	36 (4%) 34 46	37, 64, 107, 135	0

All (36) RSRZ outliers are listed below:

Mol	Chain	Res	Type	RSRZ
1	A	222	PHE	5.1
1	A	266	LEU	4.6
1	A	237	LEU	3.9
1	A	189	TRP	3.7
1	A	258	PHE	3.7
1	A	461	TYR	3.6
1	A	129	CYS	3.5
1	A	261	VAL	3.4
1	A	48	SER	3.2
1	A	458	ALA	3.1
2	B	377	HIS	3.0
1	A	239	ARG	3.0
1	A	267	PHE	2.9
1	A	270	LYS	2.8
1	A	269	LYS	2.7
2	B	66	LYS	2.6
1	A	223	ARG	2.6
1	A	262	TYR	2.5
1	A	188	GLY	2.4
2	B	386	GLN	2.4
1	A	291	ILE	2.4
1	A	294	THR	2.4
1	A	241	ASP	2.3
2	B	385	ILE	2.3

*Continued on next page...*

*Continued from previous page...*

Mol	Chain	Res	Type	RSRZ
2	B	398	ILE	2.3
1	A	274	PHE	2.3
1	A	301	ALA	2.3
2	B	245	GLY	2.2
2	B	286	GLU	2.2
2	B	388	PHE	2.2
2	B	378	ALA	2.1
1	A	445	TRP	2.1
1	A	265	ARG	2.1
1	A	254	ALA	2.1
1	A	233	PRO	2.1
1	A	293	CYS	2.1

## 6.2 Non-standard residues in protein, DNA, RNA chains [i](#)

There are no non-standard protein/DNA/RNA residues in this entry.

## 6.3 Carbohydrates [i](#)

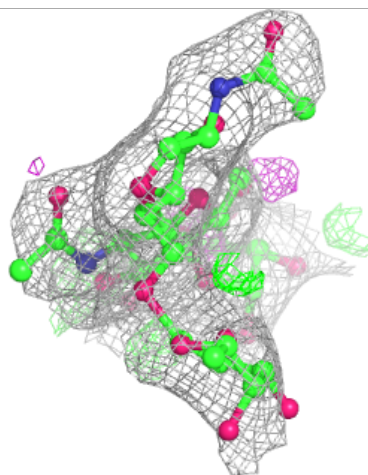
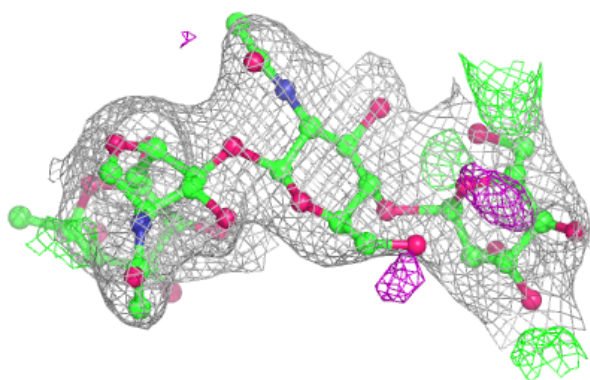
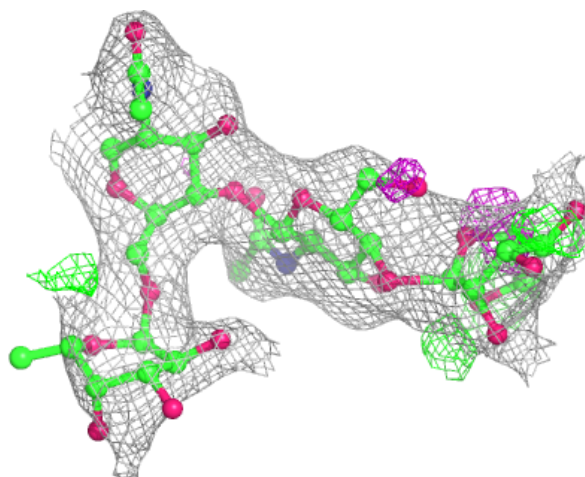
In the following table, the Atoms column lists the number of modelled atoms in the group and the number defined in the chemical component dictionary. The B-factors column lists the minimum, median, 95<sup>th</sup> percentile and maximum values of B factors of atoms in the group. The column labelled 'Q < 0.9' lists the number of atoms with occupancy less than 0.9.

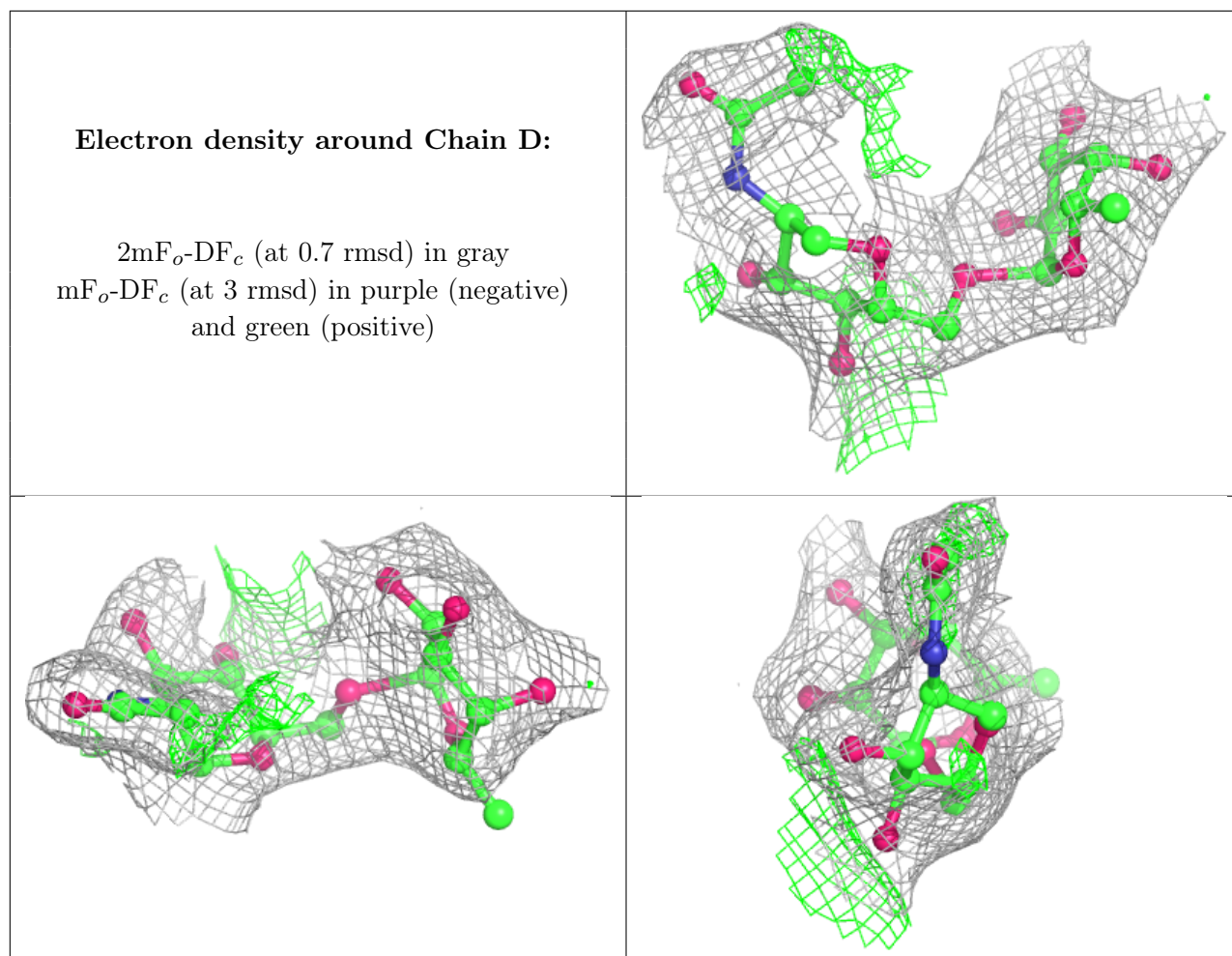
Mol	Type	Chain	Res	Atoms	RSCC	RSR	B-factors(Å <sup>2</sup> )	Q < 0.9
3	MAN	C	3	11/12	0.62	0.19	98,100,101,102	0
3	FUC	C	4	10/11	0.76	0.30	101,102,103,104	0
4	NAG	D	1	14/15	0.83	0.17	78,82,85,85	0
4	FUC	D	2	10/11	0.90	0.18	84,85,86,86	0
3	NAG	C	2	14/15	0.91	0.17	86,90,92,93	0
3	NAG	C	1	14/15	0.93	0.12	80,83,85,86	0

The following is a graphical depiction of the model fit to experimental electron density for oligosaccharide. Each fit is shown from different orientation to approximate a three-dimensional view.

**Electron density around Chain C:**

$2mF_o-DF_c$  (at 0.7 rmsd) in gray  
 $mF_o-DF_c$  (at 3 rmsd) in purple (negative)  
and green (positive)





## 6.4 Ligands [i](#)

In the following table, the Atoms column lists the number of modelled atoms in the group and the number defined in the chemical component dictionary. The B-factors column lists the minimum, median, 95<sup>th</sup> percentile and maximum values of B factors of atoms in the group. The column labelled 'Q< 0.9' lists the number of atoms with occupancy less than 0.9.

Mol	Type	Chain	Res	Atoms	RSCC	RSR	B-factors(Å <sup>2</sup> )	Q<0.9
6	NAG	A	502	14/15	0.90	0.14	82,86,88,88	0
5	2BX	A	501	12/12	0.99	0.16	41,47,50,51	0

## 6.5 Other polymers [i](#)

There are no such residues in this entry.