



# Full wwPDB X-ray Structure Validation Report ⓘ

Aug 29, 2023 – 05:38 AM EDT

PDB ID : 3MDR  
Title : Tranlycypromine complex of Cytochrome P450 46A1  
Authors : Mast, N.; Charvet, C.; Pikuleva, I.; Stout, C.D.  
Deposited on : 2010-03-30  
Resolution : 2.00 Å(reported)

This is a Full wwPDB X-ray Structure Validation Report for a publicly released PDB entry.

We welcome your comments at [validation@mail.wwpdb.org](mailto:validation@mail.wwpdb.org)

A user guide is available at

<https://www.wwpdb.org/validation/2017/XrayValidationReportHelp>

with specific help available everywhere you see the ⓘ symbol.

The types of validation reports are described at

<http://www.wwpdb.org/validation/2017/FAQs#types>.

---

The following versions of software and data (see [references ⓘ](#)) were used in the production of this report:

MolProbity : 4.02b-467  
Mogul : 1.8.5 (274361), CSD as541be (2020)  
Xtriage (Phenix) : 1.13  
EDS : 2.35  
buster-report : 1.1.7 (2018)  
Percentile statistics : 20191225.v01 (using entries in the PDB archive December 25th 2019)  
Refmac : 5.8.0158  
CCP4 : 7.0.044 (Gargrove)  
Ideal geometry (proteins) : Engh & Huber (2001)  
Ideal geometry (DNA, RNA) : Parkinson et al. (1996)  
Validation Pipeline (wwPDB-VP) : 2.35

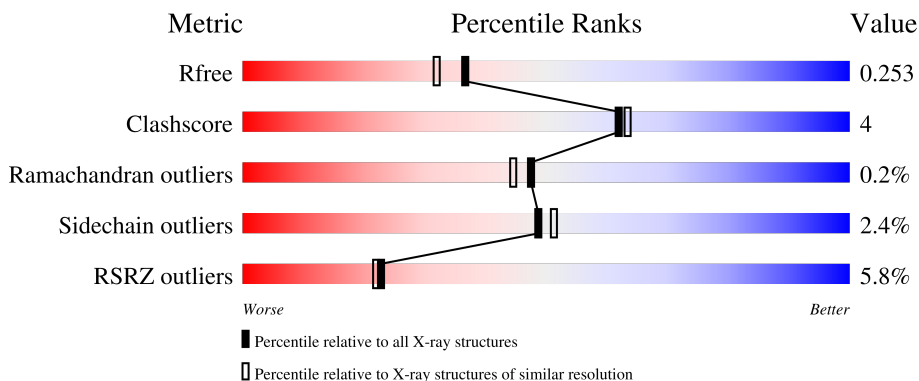
# 1 Overall quality at a glance

The following experimental techniques were used to determine the structure:

*X-RAY DIFFRACTION*

The reported resolution of this entry is 2.00 Å.

Percentile scores (ranging between 0-100) for global validation metrics of the entry are shown in the following graphic. The table shows the number of entries on which the scores are based.



Metric	Whole archive (#Entries)	Similar resolution (#Entries, resolution range(Å))
$R_{free}$	130704	8085 (2.00-2.00)
Clashscore	141614	9178 (2.00-2.00)
Ramachandran outliers	138981	9054 (2.00-2.00)
Sidechain outliers	138945	9053 (2.00-2.00)
RSRZ outliers	127900	7900 (2.00-2.00)

The table below summarises the geometric issues observed across the polymeric chains and their fit to the electron density. The red, orange, yellow and green segments of the lower bar indicate the fraction of residues that contain outliers for  $\geq 3$ , 2, 1 and 0 types of geometric quality criteria respectively. A grey segment represents the fraction of residues that are not modelled. The numeric value for each fraction is indicated below the corresponding segment, with a dot representing fractions  $\leq 5\%$ . The upper red bar (where present) indicates the fraction of residues that have poor fit to the electron density. The numeric value is given above the bar.

Mol	Chain	Length	Quality of chain
1	A	456	 7% 80% 13% • 6%
1	B	456	 4% 82% 10% 7%

## 2 Entry composition i

There are 4 unique types of molecules in this entry. The entry contains 7322 atoms, of which 0 are hydrogens and 0 are deuteriums.

In the tables below, the ZeroOcc column contains the number of atoms modelled with zero occupancy, the AltConf column contains the number of residues with at least one atom in alternate conformation and the Trace column contains the number of residues modelled with at most 2 atoms.

- Molecule 1 is a protein called Cholesterol 24-hydroxylase.

Mol	Chain	Residues	Atoms					ZeroOcc	AltConf	Trace
			Total	C	N	O	S			
1	A	427	3447	2200	605	625	17	0	0	0
1	B	425	3429	2187	602	623	17	0	0	0

There are 12 discrepancies between the modelled and reference sequences:

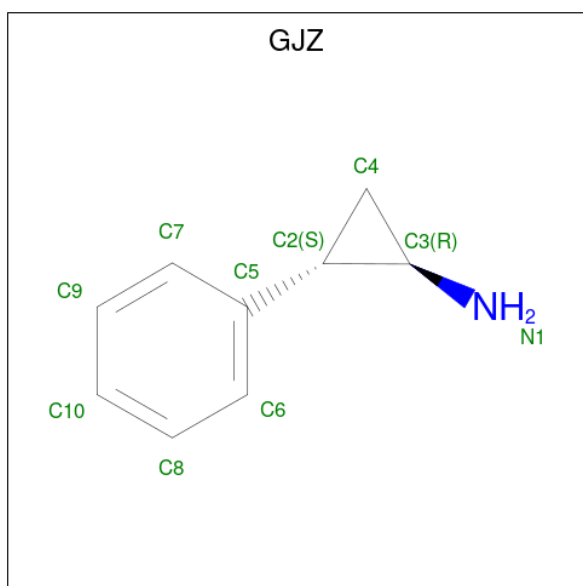
Chain	Residue	Modelled	Actual	Comment	Reference
A	49	MET	-	expression tag	UNP Q9Y6A2
A	50	ALA	-	expression tag	UNP Q9Y6A2
A	501	HIS	-	expression tag	UNP Q9Y6A2
A	502	HIS	-	expression tag	UNP Q9Y6A2
A	503	HIS	-	expression tag	UNP Q9Y6A2
A	504	HIS	-	expression tag	UNP Q9Y6A2
B	49	MET	-	expression tag	UNP Q9Y6A2
B	50	ALA	-	expression tag	UNP Q9Y6A2
B	501	HIS	-	expression tag	UNP Q9Y6A2
B	502	HIS	-	expression tag	UNP Q9Y6A2
B	503	HIS	-	expression tag	UNP Q9Y6A2
B	504	HIS	-	expression tag	UNP Q9Y6A2

- Molecule 2 is PROTOPORPHYRIN IX CONTAINING FE (three-letter code: HEM) (formula:  $C_{34}H_{32}FeN_4O_4$ ).



Mol	Chain	Residues	Atoms				ZeroOcc	AltConf	
2	A	1	Total	C	Fe	N	O	0	0
			43	34	1	4	4		
2	B	1	Total	C	Fe	N	O	0	0
			43	34	1	4	4		

- Molecule 3 is (1R,2S)-2-phenylcyclopropanamine (three-letter code: GJZ) (formula:  $C_9H_{11}N$ ).



Mol	Chain	Residues	Atoms			ZeroOcc	AltConf
3	A	1	Total	C	N	0	0
			10	9	1		

*Continued on next page...*

*Continued from previous page...*

Mol	Chain	Residues	Atoms			ZeroOcc	AltConf
3	B	1	Total	C	N	0	0
			10	9	1		

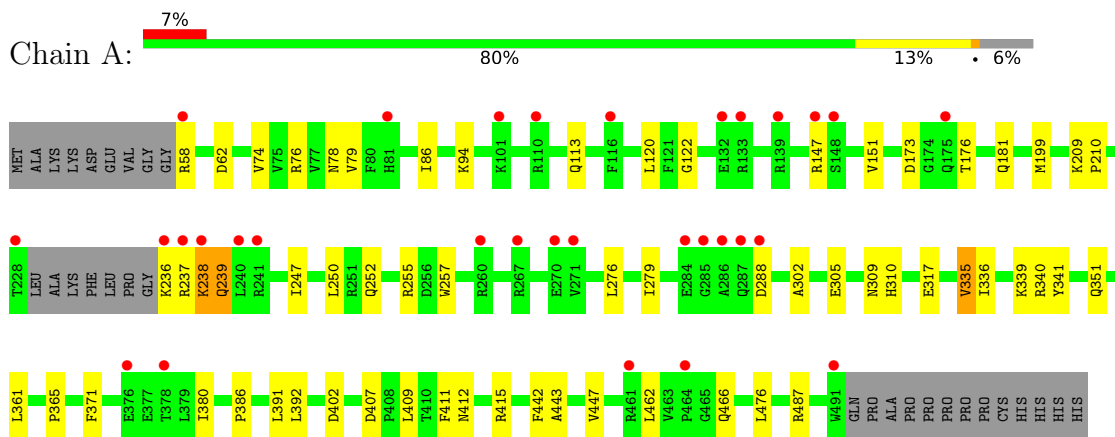
- Molecule 4 is water.

Mol	Chain	Residues	Atoms		ZeroOcc	AltConf
4	A	172	Total	O	0	0
			172	172		
4	B	168	Total	O	0	0
			168	168		

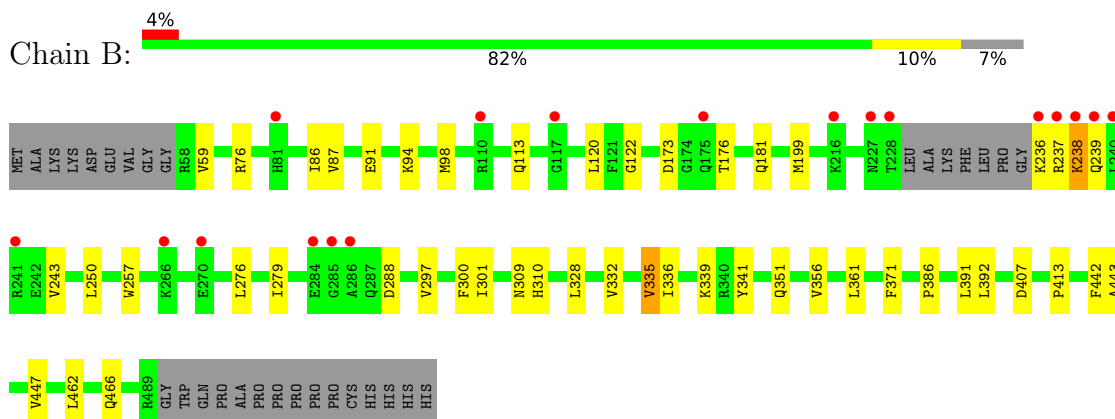
### 3 Residue-property plots [i](#)

These plots are drawn for all protein, RNA, DNA and oligosaccharide chains in the entry. The first graphic for a chain summarises the proportions of the various outlier classes displayed in the second graphic. The second graphic shows the sequence view annotated by issues in geometry and electron density. Residues are color-coded according to the number of geometric quality criteria for which they contain at least one outlier: green = 0, yellow = 1, orange = 2 and red = 3 or more. A red dot above a residue indicates a poor fit to the electron density ( $RSRZ > 2$ ). Stretches of 2 or more consecutive residues without any outlier are shown as a green connector. Residues present in the sample, but not in the model, are shown in grey.

- Molecule 1: Cholesterol 24-hydroxylase



- Molecule 1: Cholesterol 24-hydroxylase



## 4 Data and refinement statistics i

Property	Value	Source
Space group	I 41	Depositor
Cell constants a, b, c, $\alpha$ , $\beta$ , $\gamma$	121.19Å 121.19Å 143.99Å 90.00° 90.00° 90.00°	Depositor
Resolution (Å)	30.00 – 2.00 38.89 – 2.00	Depositor EDS
% Data completeness (in resolution range)	93.2 (30.00-2.00) 94.1 (38.89-2.00)	Depositor EDS
$R_{merge}$	0.07	Depositor
$R_{sym}$	0.07	Depositor
$\langle I/\sigma(I) \rangle$ <sup>1</sup>	2.20 (at 2.00Å)	Xtrriage
Refinement program	REFMAC 5.5.0072, CNS	Depositor
R, $R_{free}$	0.225 , 0.244 0.231 , 0.253	Depositor DCC
$R_{free}$ test set	3389 reflections (5.16%)	wwPDB-VP
Wilson B-factor (Å <sup>2</sup> )	34.1	Xtrriage
Anisotropy	0.093	Xtrriage
Bulk solvent $k_{sol}$ (e/Å <sup>3</sup> ), $B_{sol}$ (Å <sup>2</sup> )	0.38 , 35.6	EDS
L-test for twinning <sup>2</sup>	$\langle  L  \rangle = 0.53$ , $\langle L^2 \rangle = 0.37$	Xtrriage
Estimated twinning fraction	0.289 for -h,k,-l	Xtrriage
Reported twinning fraction	0.532 for H, K, L 0.468 for -H, K, -L	Depositor
Outliers	1 of 65726 reflections (0.002%)	Xtrriage
$F_o, F_c$ correlation	0.93	EDS
Total number of atoms	7322	wwPDB-VP
Average B, all atoms (Å <sup>2</sup> )	37.0	wwPDB-VP

Xtrriage's analysis on translational NCS is as follows: *The largest off-origin peak in the Patterson function is 4.23% of the height of the origin peak. No significant pseudotranslation is detected.*

<sup>1</sup>Intensities estimated from amplitudes.

<sup>2</sup>Theoretical values of  $\langle |L| \rangle$ ,  $\langle L^2 \rangle$  for acentric reflections are 0.5, 0.333 respectively for untwinned datasets, and 0.375, 0.2 for perfectly twinned datasets.

## 5 Model quality

### 5.1 Standard geometry

Bond lengths and bond angles in the following residue types are not validated in this section: GJZ, HEM

The Z score for a bond length (or angle) is the number of standard deviations the observed value is removed from the expected value. A bond length (or angle) with  $|Z| > 5$  is considered an outlier worth inspection. RMSZ is the root-mean-square of all Z scores of the bond lengths (or angles).

Mol	Chain	Bond lengths		Bond angles	
		RMSZ	# Z  >5	RMSZ	# Z  >5
1	A	0.65	0/3516	0.66	0/4742
1	B	0.65	0/3496	0.65	0/4714
All	All	0.65	0/7012	0.66	0/9456

There are no bond length outliers.

There are no bond angle outliers.

There are no chirality outliers.

There are no planarity outliers.

### 5.2 Too-close contacts

In the following table, the Non-H and H(model) columns list the number of non-hydrogen atoms and hydrogen atoms in the chain respectively. The H(added) column lists the number of hydrogen atoms added and optimized by MolProbity. The Clashes column lists the number of clashes within the asymmetric unit, whereas Symm-Clashes lists symmetry-related clashes.

Mol	Chain	Non-H	H(model)	H(added)	Clashes	Symm-Clashes
1	A	3447	0	3492	35	0
1	B	3429	0	3479	25	0
2	A	43	0	30	1	0
2	B	43	0	30	1	0
3	A	10	0	10	1	0
3	B	10	0	10	0	0
4	A	172	0	0	4	0
4	B	168	0	0	6	0
All	All	7322	0	7051	61	0

The all-atom clashscore is defined as the number of clashes found per 1000 atoms (including hydrogen atoms). The all-atom clashscore for this structure is 4.



All (61) close contacts within the same asymmetric unit are listed below, sorted by their clash magnitude.

Atom-1	Atom-2	Interatomic distance (Å)	Clash overlap (Å)
1:A:58:ARG:NH1	1:A:62:ASP:HB3	1.86	0.91
1:A:58:ARG:HH11	1:A:62:ASP:HB3	1.38	0.87
1:A:86:ILE:HD12	1:A:392:LEU:HD22	1.64	0.80
1:A:305:GLU:OE2	4:A:629:HOH:O	2.03	0.76
1:B:87:VAL:HG13	4:B:603:HOH:O	1.91	0.68
1:B:309:ASN:ND2	4:B:623:HOH:O	1.85	0.67
1:B:91:GLU:HB2	4:B:540:HOH:O	1.95	0.65
1:A:113:GLN:HG2	1:A:122:GLY:O	2.01	0.60
1:B:236:LYS:O	1:B:238:LYS:N	2.34	0.60
1:B:113:GLN:HG2	1:B:122:GLY:O	2.04	0.57
1:A:236:LYS:O	1:A:238:LYS:N	2.38	0.57
1:A:309:ASN:ND2	4:A:620:HOH:O	2.03	0.57
1:B:86:ILE:HD12	1:B:392:LEU:HD22	1.87	0.57
1:B:173:ASP:OD2	1:B:176:THR:OG1	2.23	0.56
2:A:505:HEM:HBC2	2:A:505:HEM:CMC	2.38	0.54
1:A:276:LEU:HA	1:A:279:ILE:HG12	1.89	0.53
1:B:328:LEU:HD21	1:B:356:VAL:HG21	1.91	0.53
1:B:443:ALA:O	1:B:447:VAL:HG13	2.09	0.52
1:A:120:LEU:HD13	1:A:247:ILE:HG12	1.92	0.52
1:A:147:ARG:O	1:A:151:VAL:HG23	2.10	0.51
1:B:300:PHE:HD2	1:B:301:ILE:HD13	1.75	0.51
1:A:173:ASP:OD2	1:A:176:THR:OG1	2.27	0.50
1:A:402:ASP:HB2	4:B:643:HOH:O	2.10	0.50
1:A:173:ASP:O	1:A:487:ARG:NH2	2.45	0.49
1:A:199:MET:HG3	1:A:257:TRP:CD2	2.47	0.49
1:B:335:VAL:HG23	1:B:336:ILE:HG23	1.92	0.49
1:B:76:ARG:HH22	1:B:386:PRO:HG2	1.77	0.49
1:A:412:ASN:O	1:A:415:ARG:HG3	2.12	0.49
1:A:335:VAL:HG23	1:A:336:ILE:HG23	1.95	0.49
1:A:252:GLN:OE1	1:A:255:ARG:NH1	2.42	0.49
1:B:310:HIS:CE1	1:B:361:LEU:HG	2.48	0.48
1:A:76:ARG:HH22	1:A:386:PRO:HG2	1.79	0.47
1:B:94:LYS:O	1:B:98:MET:HB2	2.15	0.47
1:A:310:HIS:CE1	1:A:361:LEU:HG	2.50	0.47
1:A:365:PRO:O	1:A:476:LEU:HD12	2.14	0.47
1:A:443:ALA:O	1:A:447:VAL:HG13	2.15	0.47
1:A:462:LEU:HG	1:A:466:GLN:HB2	1.95	0.47
1:B:339:LYS:HE2	1:B:341:TYR:O	2.15	0.47
1:B:413:PRO:HD2	4:B:585:HOH:O	2.14	0.47
1:A:78:ASN:HB3	4:A:573:HOH:O	2.15	0.46

*Continued on next page...*

Continued from previous page...

Atom-1	Atom-2	Interatomic distance (Å)	Clash overlap (Å)
1:B:462:LEU:HG	1:B:466:GLN:HB2	1.97	0.45
1:A:236:LYS:HD3	1:A:238:LYS:HE2	1.99	0.45
1:A:317:GLU:HG2	1:A:411:PHE:CD1	2.51	0.45
1:A:339:LYS:HE2	1:A:341:TYR:O	2.17	0.45
1:B:371:PHE:HA	1:B:391:LEU:O	2.17	0.45
1:A:302:ALA:HB1	3:A:506:GJZ:HN1	1.82	0.45
1:A:94:LYS:HD2	1:B:91:GLU:HG2	2.00	0.45
1:A:371:PHE:HA	1:A:391:LEU:O	2.17	0.44
2:B:505:HEM:HBC2	2:B:505:HEM:CMC	2.48	0.43
1:A:340:ARG:NH2	4:A:646:HOH:O	2.50	0.43
1:B:276:LEU:HA	1:B:279:ILE:HG12	2.01	0.43
1:B:199:MET:HG3	1:B:257:TRP:CD2	2.55	0.42
1:A:79:VAL:HG11	1:A:392:LEU:HD12	2.02	0.41
1:A:409:LEU:HD23	1:A:409:LEU:HA	1.83	0.41
1:A:238:LYS:HG2	1:A:239:GLN:N	2.34	0.41
1:B:239:GLN:O	1:B:243:VAL:HG23	2.20	0.41
1:B:120:LEU:HD12	1:B:297:VAL:HG11	2.03	0.41
1:A:209:LYS:HB2	1:A:210:PRO:HD3	2.02	0.41
1:B:236:LYS:HD3	1:B:238:LYS:HE2	2.03	0.41
1:A:74:VAL:HG21	1:A:380:ILE:O	2.21	0.41
1:B:59:VAL:HB	4:B:622:HOH:O	2.21	0.40

There are no symmetry-related clashes.

## 5.3 Torsion angles [i](#)

### 5.3.1 Protein backbone [i](#)

In the following table, the Percentiles column shows the percent Ramachandran outliers of the chain as a percentile score with respect to all X-ray entries followed by that with respect to entries of similar resolution.

The Analysed column shows the number of residues for which the backbone conformation was analysed, and the total number of residues.

Mol	Chain	Analysed	Favoured	Allowed	Outliers	Percentiles	
1	A	423/456 (93%)	407 (96%)	15 (4%)	1 (0%)	47	44
1	B	421/456 (92%)	408 (97%)	12 (3%)	1 (0%)	47	44
All	All	844/912 (92%)	815 (97%)	27 (3%)	2 (0%)	47	44

All (2) Ramachandran outliers are listed below:

Mol	Chain	Res	Type
1	A	237	ARG
1	B	237	ARG

### 5.3.2 Protein sidechains [i](#)

In the following table, the Percentiles column shows the percent sidechain outliers of the chain as a percentile score with respect to all X-ray entries followed by that with respect to entries of similar resolution.

The Analysed column shows the number of residues for which the sidechain conformation was analysed, and the total number of residues.

Mol	Chain	Analysed	Rotameric	Outliers	Percentiles	
1	A	374/397 (94%)	365 (98%)	9 (2%)	49	51
1	B	373/397 (94%)	364 (98%)	9 (2%)	49	51
All	All	747/794 (94%)	729 (98%)	18 (2%)	49	51

All (18) residues with a non-rotameric sidechain are listed below:

Mol	Chain	Res	Type
1	A	181	GLN
1	A	238	LYS
1	A	239	GLN
1	A	250	LEU
1	A	288	ASP
1	A	335	VAL
1	A	351	GLN
1	A	407	ASP
1	A	442	PHE
1	B	181	GLN
1	B	238	LYS
1	B	250	LEU
1	B	288	ASP
1	B	332	VAL
1	B	335	VAL
1	B	351	GLN
1	B	407	ASP
1	B	442	PHE

Sometimes sidechains can be flipped to improve hydrogen bonding and reduce clashes. All (8) such sidechains are listed below:

Mol	Chain	Res	Type
1	A	213	GLN
1	A	351	GLN
1	A	355	GLN
1	A	473	GLN
1	B	213	GLN
1	B	351	GLN
1	B	355	GLN
1	B	473	GLN

### 5.3.3 RNA [i](#)

There are no RNA molecules in this entry.

### 5.4 Non-standard residues in protein, DNA, RNA chains [i](#)

There are no non-standard protein/DNA/RNA residues in this entry.

### 5.5 Carbohydrates [i](#)

There are no monosaccharides in this entry.

### 5.6 Ligand geometry [i](#)

4 ligands are modelled in this entry.

In the following table, the Counts columns list the number of bonds (or angles) for which Mogul statistics could be retrieved, the number of bonds (or angles) that are observed in the model and the number of bonds (or angles) that are defined in the Chemical Component Dictionary. The Link column lists molecule types, if any, to which the group is linked. The Z score for a bond length (or angle) is the number of standard deviations the observed value is removed from the expected value. A bond length (or angle) with  $|Z| > 2$  is considered an outlier worth inspection. RMSZ is the root-mean-square of all Z scores of the bond lengths (or angles).

Mol	Type	Chain	Res	Link	Bond lengths			Bond angles		
					Counts	RMSZ	$\# Z  > 2$	Counts	RMSZ	$\# Z  > 2$
3	GJZ	B	506	2	11,11,11	0.91	0	12,15,15	1.82	4 (33%)
3	GJZ	A	506	2	11,11,11	0.93	1 (9%)	12,15,15	1.18	1 (8%)
2	HEM	B	505	3,1	41,50,50	2.68	16 (39%)	45,82,82	2.04	14 (31%)
2	HEM	A	505	3,1	41,50,50	2.47	14 (34%)	45,82,82	2.11	22 (48%)

In the following table, the Chirals column lists the number of chiral outliers, the number of chiral

centers analysed, the number of these observed in the model and the number defined in the Chemical Component Dictionary. Similar counts are reported in the Torsion and Rings columns. '2' means no outliers of that kind were identified.

Mol	Type	Chain	Res	Link	Chirals	Torsions	Rings
3	GJZ	B	506	2	-	2/4/9/9	0/2/2/2
3	GJZ	A	506	2	-	2/4/9/9	0/2/2/2
2	HEM	B	505	3,1	-	4/12/54/54	-
2	HEM	A	505	3,1	-	3/12/54/54	-

All (31) bond length outliers are listed below:

Mol	Chain	Res	Type	Atoms	Z	Observed(Å)	Ideal(Å)
2	B	505	HEM	CHB-C1B	6.01	1.50	1.35
2	B	505	HEM	C1B-C2B	-5.57	1.33	1.44
2	A	505	HEM	CHB-C1B	5.53	1.49	1.35
2	B	505	HEM	C3C-C2C	5.49	1.48	1.40
2	A	505	HEM	C3C-C2C	5.18	1.47	1.40
2	A	505	HEM	C1B-C2B	-5.10	1.34	1.44
2	A	505	HEM	C3B-C2B	5.06	1.47	1.37
2	B	505	HEM	CAB-C3B	-5.03	1.33	1.47
2	A	505	HEM	CAB-C3B	-4.84	1.34	1.47
2	B	505	HEM	C1A-NA	4.80	1.46	1.36
2	B	505	HEM	C3B-C2B	4.77	1.46	1.37
2	B	505	HEM	CBB-CAB	4.45	1.52	1.30
2	A	505	HEM	C1A-NA	4.11	1.44	1.36
2	A	505	HEM	CBB-CAB	3.82	1.49	1.30
2	B	505	HEM	FE-NB	3.60	2.14	1.96
2	A	505	HEM	C2C-C1C	-3.54	1.34	1.42
2	B	505	HEM	C1A-CHA	3.50	1.50	1.41
2	B	505	HEM	C2C-C1C	-3.38	1.34	1.42
2	A	505	HEM	C1A-CHA	3.17	1.49	1.41
2	A	505	HEM	C4D-ND	-3.01	1.35	1.40
2	A	505	HEM	CHC-C4B	-2.96	1.32	1.41
2	B	505	HEM	CHD-C1D	-2.87	1.32	1.41
2	B	505	HEM	C4D-ND	-2.85	1.35	1.40
2	B	505	HEM	C4A-CHB	-2.66	1.33	1.41
2	B	505	HEM	CHC-C4B	-2.61	1.33	1.41
2	B	505	HEM	C4D-C3D	2.50	1.49	1.45
2	A	505	HEM	CHD-C1D	-2.37	1.34	1.41
2	A	505	HEM	FE-NB	2.24	2.07	1.96
2	B	505	HEM	C4B-NB	-2.21	1.34	1.38
2	A	505	HEM	C4A-CHB	-2.16	1.35	1.41
3	A	506	GJZ	C5-C2	-2.09	1.48	1.51

All (41) bond angle outliers are listed below:

Mol	Chain	Res	Type	Atoms	Z	Observed(°)	Ideal(°)
2	B	505	HEM	CHC-C4B-NB	4.78	129.63	124.43
2	A	505	HEM	CHC-C4B-NB	4.64	129.48	124.43
2	B	505	HEM	C1B-NB-C4B	4.45	109.67	105.07
2	B	505	HEM	CHD-C1D-ND	4.33	129.13	124.43
2	A	505	HEM	C4B-C3B-C2B	-4.32	103.68	107.11
2	B	505	HEM	C4B-C3B-C2B	-3.99	103.95	107.11
3	B	506	GJZ	C4-C2-C3	3.97	61.10	59.14
2	A	505	HEM	C2D-C1D-ND	-3.70	105.45	109.88
2	A	505	HEM	CHD-C1D-ND	3.45	128.18	124.43
2	B	505	HEM	O2A-CGA-CBA	3.40	124.94	114.03
2	A	505	HEM	CBA-CAA-C2A	-3.18	107.20	112.62
2	A	505	HEM	CHC-C4B-C3B	-3.12	119.79	124.57
2	A	505	HEM	CHA-C4D-ND	3.06	128.16	124.38
2	B	505	HEM	CHA-C4D-ND	3.06	128.16	124.38
2	B	505	HEM	O2D-CGD-O1D	-2.98	115.88	123.30
3	B	506	GJZ	C7-C5-C2	-2.94	115.52	121.08
2	A	505	HEM	C4A-C3A-C2A	2.89	109.01	107.00
2	B	505	HEM	O2D-CGD-CBD	2.71	122.73	114.03
2	B	505	HEM	C4A-C3A-C2A	2.71	108.88	107.00
2	A	505	HEM	O2A-CGA-CBA	2.63	122.47	114.03
2	A	505	HEM	C2B-C1B-NB	2.60	112.92	109.84
2	B	505	HEM	O2A-CGA-O1A	-2.60	116.82	123.30
2	A	505	HEM	O2D-CGD-O1D	-2.56	116.93	123.30
2	A	505	HEM	CMB-C2B-C1B	2.51	128.86	125.04
2	A	505	HEM	C4B-CHC-C1C	2.51	125.87	122.56
2	A	505	HEM	CHD-C1D-C2D	-2.40	121.23	124.98
2	A	505	HEM	CHA-C4D-C3D	-2.40	120.82	125.33
3	A	506	GJZ	C7-C5-C2	-2.40	116.54	121.08
2	A	505	HEM	CMB-C2B-C3B	-2.37	122.51	128.30
2	B	505	HEM	CBA-CAA-C2A	-2.34	108.62	112.62
2	B	505	HEM	CMB-C2B-C1B	2.32	128.57	125.04
2	A	505	HEM	C1B-NB-C4B	2.26	107.41	105.07
2	A	505	HEM	O2A-CGA-O1A	-2.26	117.68	123.30
2	A	505	HEM	CMA-C3A-C4A	-2.24	125.03	128.46
2	A	505	HEM	C3D-C4D-ND	-2.22	107.69	110.17
2	A	505	HEM	C1D-C2D-C3D	-2.22	104.62	106.96
2	B	505	HEM	CHD-C1D-C2D	-2.21	121.53	124.98
3	B	506	GJZ	C4-C2-C5	2.17	126.43	122.24
2	B	505	HEM	C2C-C3C-C4C	-2.17	105.38	106.90
2	A	505	HEM	O2D-CGD-CBD	2.10	120.79	114.03
3	B	506	GJZ	C4-C3-C2	-2.02	59.28	60.50

There are no chirality outliers.

All (11) torsion outliers are listed below:

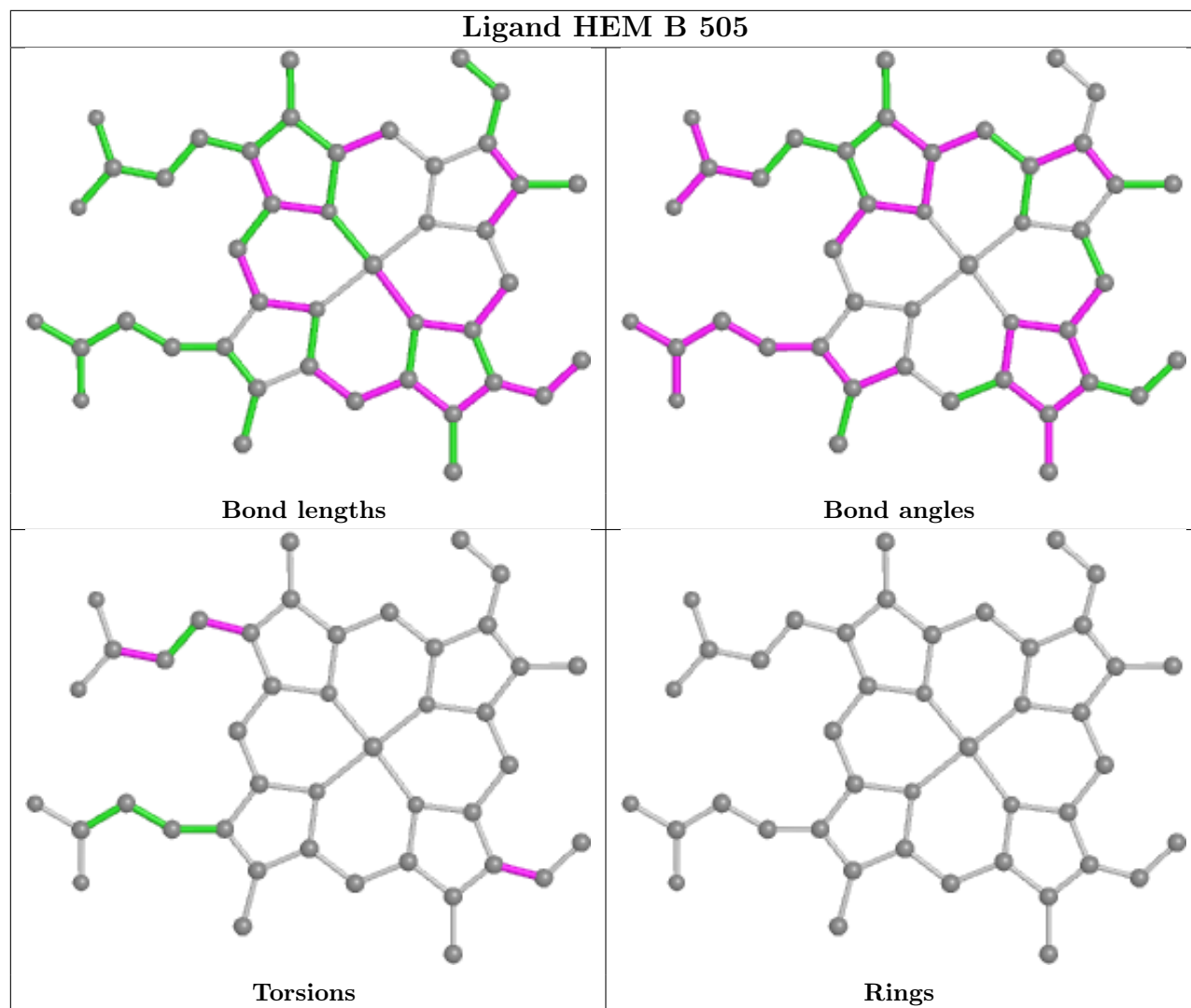
Mol	Chain	Res	Type	Atoms
3	A	506	GJZ	C4-C2-C5-C6
2	B	505	HEM	C2B-C3B-CAB-CBB
3	A	506	GJZ	C4-C2-C5-C7
2	B	505	HEM	C4D-C3D-CAD-CBD
3	B	506	GJZ	C4-C2-C5-C6
3	B	506	GJZ	C4-C2-C5-C7
2	B	505	HEM	CAD-CBD-CGD-O1D
2	B	505	HEM	CAD-CBD-CGD-O2D
2	A	505	HEM	CAD-CBD-CGD-O1D
2	A	505	HEM	CAD-CBD-CGD-O2D
2	A	505	HEM	C4D-C3D-CAD-CBD

There are no ring outliers.

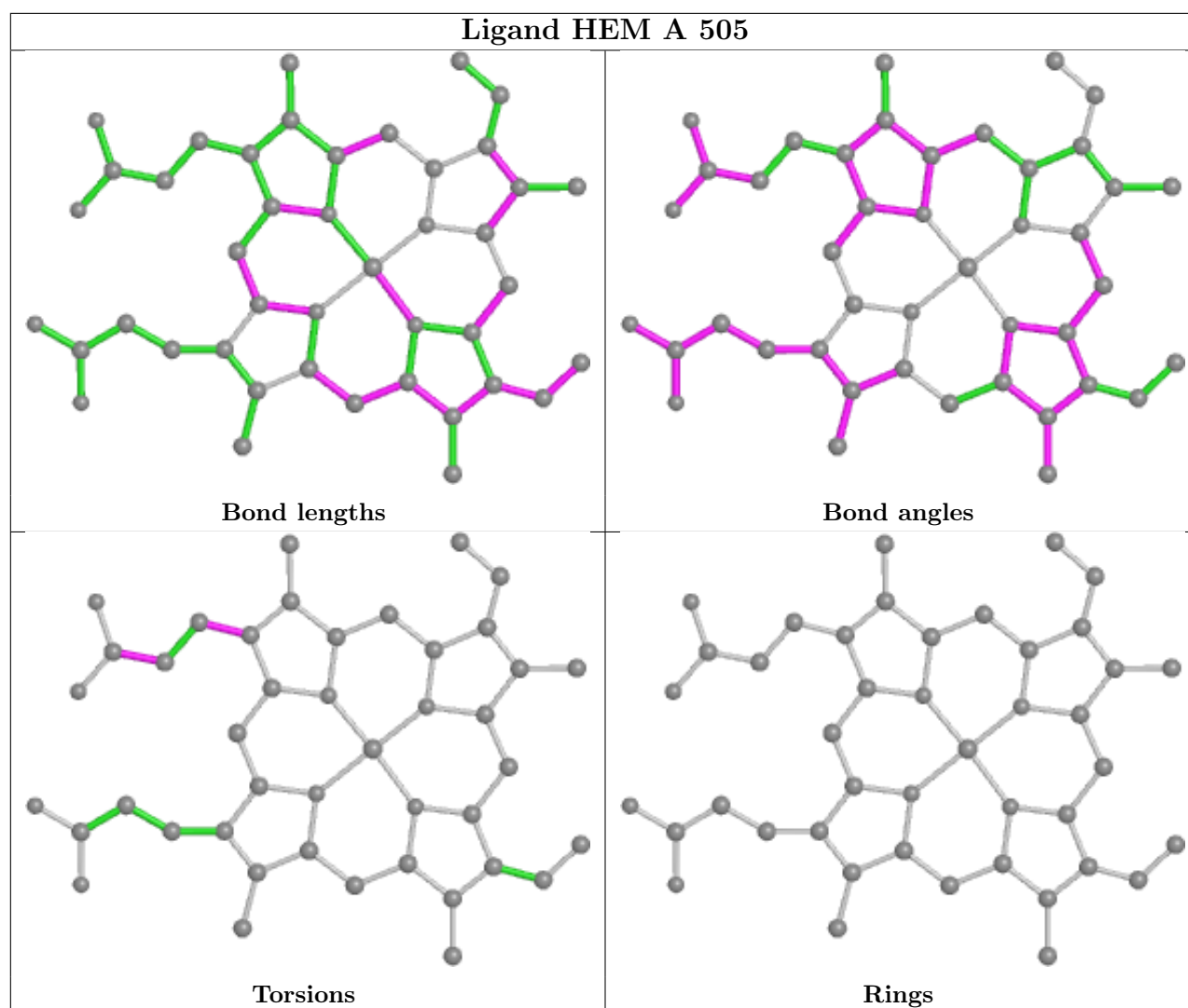
3 monomers are involved in 3 short contacts:

Mol	Chain	Res	Type	Clashes	Symm-Clashes
3	A	506	GJZ	1	0
2	B	505	HEM	1	0
2	A	505	HEM	1	0

The following is a two-dimensional graphical depiction of Mogul quality analysis of bond lengths, bond angles, torsion angles, and ring geometry for all instances of the Ligand of Interest. In addition, ligands with molecular weight > 250 and outliers as shown on the validation Tables will also be included. For torsion angles, if less than 5% of the Mogul distribution of torsion angles is within 10 degrees of the torsion angle in question, then that torsion angle is considered an outlier. Any bond that is central to one or more torsion angles identified as an outlier by Mogul will be highlighted in the graph. For rings, the root-mean-square deviation (RMSD) between the ring in question and similar rings identified by Mogul is calculated over all ring torsion angles. If the average RMSD is greater than 60 degrees and the minimal RMSD between the ring in question and any Mogul-identified rings is also greater than 60 degrees, then that ring is considered an outlier. The outliers are highlighted in purple. The color gray indicates Mogul did not find sufficient equivalents in the CSD to analyse the geometry.







## 5.7 Other polymers [i](#)

There are no such residues in this entry.

## 5.8 Polymer linkage issues [i](#)

There are no chain breaks in this entry.

## 6 Fit of model and data

### 6.1 Protein, DNA and RNA chains

In the following table, the column labelled ‘#RSRZ > 2’ contains the number (and percentage) of RSRZ outliers, followed by percent RSRZ outliers for the chain as percentile scores relative to all X-ray entries and entries of similar resolution. The OWAB column contains the minimum, median, 95<sup>th</sup> percentile and maximum values of the occupancy-weighted average B-factor per residue. The column labelled ‘Q < 0.9’ lists the number of (and percentage) of residues with an average occupancy less than 0.9.

Mol	Chain	Analysed	<RSRZ>	#RSRZ>2	OWAB(Å <sup>2</sup> )	Q<0.9
1	A	427/456 (93%)	0.43	31 (7%) 15 14	19, 37, 56, 77	0
1	B	425/456 (93%)	0.41	18 (4%) 36 35	18, 37, 55, 77	0
All	All	852/912 (93%)	0.42	49 (5%) 23 22	18, 37, 56, 77	0

All (49) RSRZ outliers are listed below:

Mol	Chain	Res	Type	RSRZ
1	A	237	ARG	7.9
1	B	228	THR	7.1
1	A	228	THR	6.6
1	B	238	LYS	6.6
1	A	236	LYS	6.5
1	B	237	ARG	6.5
1	B	236	LYS	5.6
1	A	285	GLY	5.0
1	A	238	LYS	4.9
1	B	284	GLU	4.9
1	B	285	GLY	3.8
1	A	270	GLU	3.5
1	B	227	ASN	3.4
1	B	175	GLN	3.2
1	A	287	GLN	3.2
1	B	117	GLY	3.2
1	B	266	LYS	3.1
1	B	270	GLU	3.1
1	A	241	ARG	3.1
1	A	491	TRP	2.9
1	A	139	ARG	2.9
1	B	241	ARG	2.9
1	A	81	HIS	2.9
1	B	240	LEU	2.9

*Continued on next page...*

*Continued from previous page...*

Mol	Chain	Res	Type	RSRZ
1	A	267	ARG	2.7
1	B	239	GLN	2.6
1	A	147	ARG	2.6
1	A	271	VAL	2.6
1	A	101	LYS	2.6
1	A	284	GLU	2.6
1	A	378	THR	2.6
1	B	110	ARG	2.5
1	B	81	HIS	2.4
1	A	58	ARG	2.4
1	A	286	ALA	2.4
1	A	464	PRO	2.4
1	B	286	ALA	2.3
1	A	288	ASP	2.3
1	A	133	ARG	2.2
1	A	260	ARG	2.2
1	A	116	PHE	2.2
1	B	216	LYS	2.2
1	A	110	ARG	2.2
1	A	461	ARG	2.1
1	A	148	SER	2.1
1	A	240	LEU	2.1
1	A	132	GLU	2.1
1	A	376	GLU	2.0
1	A	175	GLN	2.0

## 6.2 Non-standard residues in protein, DNA, RNA chains [i](#)

There are no non-standard protein/DNA/RNA residues in this entry.

## 6.3 Carbohydrates [i](#)

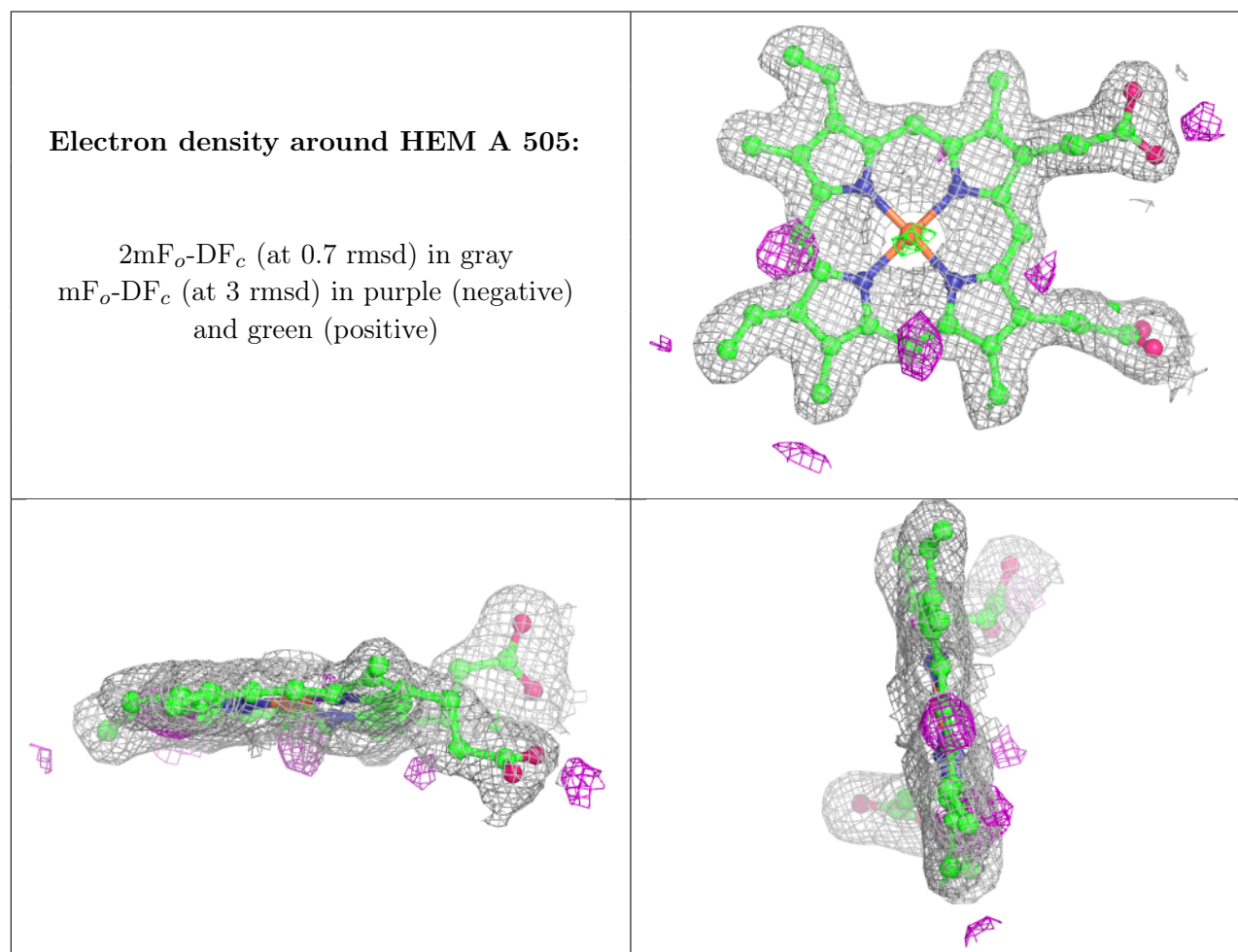
There are no monosaccharides in this entry.

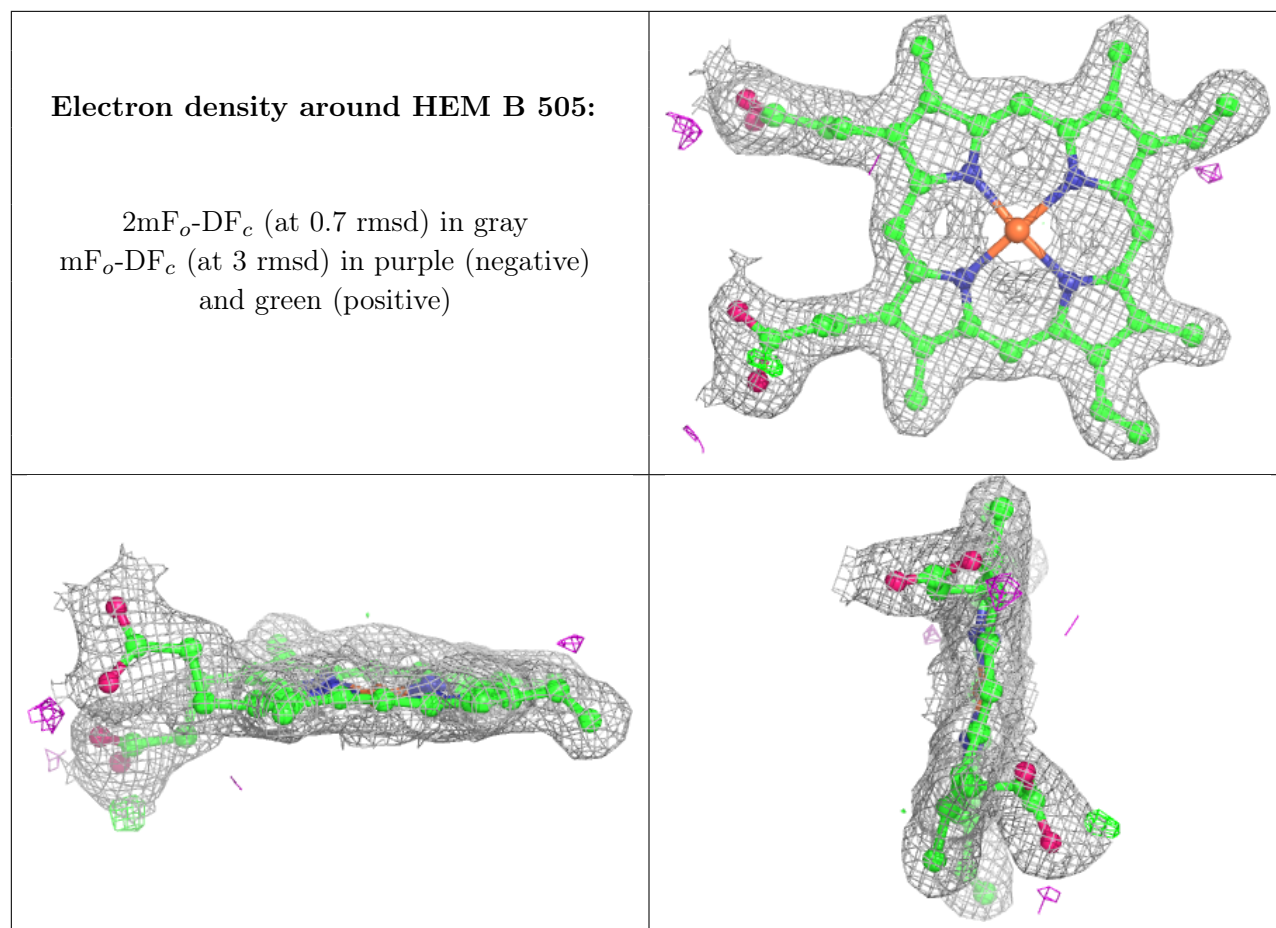
## 6.4 Ligands [i](#)

In the following table, the Atoms column lists the number of modelled atoms in the group and the number defined in the chemical component dictionary. The B-factors column lists the minimum, median, 95<sup>th</sup> percentile and maximum values of B factors of atoms in the group. The column labelled 'Q < 0.9' lists the number of atoms with occupancy less than 0.9.

Mol	Type	Chain	Res	Atoms	RSCC	RSR	B-factors( $\text{\AA}^2$ )	Q<0.9
3	GJZ	B	506	10/10	0.89	0.15	30,37,40,41	0
3	GJZ	A	506	10/10	0.94	0.16	34,37,41,41	0
2	HEM	A	505	43/43	0.96	0.13	16,23,29,32	0
2	HEM	B	505	43/43	0.98	0.11	17,23,29,33	0

The following is a graphical depiction of the model fit to experimental electron density of all instances of the Ligand of Interest. In addition, ligands with molecular weight > 250 and outliers as shown on the geometry validation Tables will also be included. Each fit is shown from different orientation to approximate a three-dimensional view.





## 6.5 Other polymers [i](#)

There are no such residues in this entry.