



# Full wwPDB X-ray Structure Validation Report ⓘ

May 23, 2020 – 03:55 pm BST

PDB ID : 6MAZ  
Title : Crystal structure of N-myristoyl transferase (NMT) G386E mutant from Plasmodium vivax in complex with inhibitor IMP-0366  
Authors : Seattle Structural Genomics Center for Infectious Disease (SSGCID)  
Deposited on : 2018-08-29  
Resolution : 1.55 Å(reported)

This is a Full wwPDB X-ray Structure Validation Report for a publicly released PDB entry.

We welcome your comments at [validation@mail.wwpdb.org](mailto:validation@mail.wwpdb.org)

A user guide is available at

<https://www.wwpdb.org/validation/2017/XrayValidationReportHelp>

with specific help available everywhere you see the ⓘ symbol.

---

The following versions of software and data (see [references ⓘ](#)) were used in the production of this report:

MolProbity : 4.02b-467  
Mogul : 1.8.5 (274361), CSD as541be (2020)  
Xtriage (Phenix) : 1.13  
EDS : 2.11  
buster-report : 1.1.7 (2018)  
Percentile statistics : 20191225.v01 (using entries in the PDB archive December 25th 2019)  
Refmac : 5.8.0158  
CCP4 : 7.0.044 (Gargrove)  
Ideal geometry (proteins) : Engh & Huber (2001)  
Ideal geometry (DNA, RNA) : Parkinson et al. (1996)  
Validation Pipeline (wwPDB-VP) : 2.11

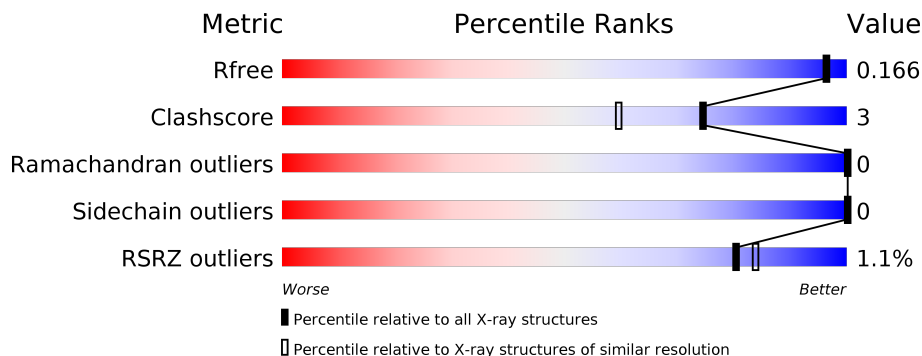
# 1 Overall quality at a glance

The following experimental techniques were used to determine the structure:

*X-RAY DIFFRACTION*

The reported resolution of this entry is 1.55 Å.

Percentile scores (ranging between 0-100) for global validation metrics of the entry are shown in the following graphic. The table shows the number of entries on which the scores are based.



Metric	Whole archive (#Entries)	Similar resolution (#Entries, resolution range(Å))
$R_{free}$	130704	1483 (1.56-1.56)
Clashscore	141614	1529 (1.56-1.56)
Ramachandran outliers	138981	1498 (1.56-1.56)
Sidechain outliers	138945	1495 (1.56-1.56)
RSRZ outliers	127900	1465 (1.56-1.56)

The table below summarises the geometric issues observed across the polymeric chains and their fit to the electron density. The red, orange, yellow and green segments on the lower bar indicate the fraction of residues that contain outliers for  $\geq 3$ , 2, 1 and 0 types of geometric quality criteria respectively. A grey segment represents the fraction of residues that are not modelled. The numeric value for each fraction is indicated below the corresponding segment, with a dot representing fractions  $\leq 5\%$ . The upper red bar (where present) indicates the fraction of residues that have poor fit to the electron density. The numeric value is given above the bar.

Mol	Chain	Length	Quality of chain
1	A	405	 % 89% 6% 5%
1	B	405	 % 90% 5% 5%
1	C	405	 % 88% 8%

## 2 Entry composition [i](#)

There are 7 unique types of molecules in this entry. The entry contains 11941 atoms, of which 0 are hydrogens and 0 are deuteriums.

In the tables below, the ZeroOcc column contains the number of atoms modelled with zero occupancy, the AltConf column contains the number of residues with at least one atom in alternate conformation and the Trace column contains the number of residues modelled with at most 2 atoms.

- Molecule 1 is a protein called Glycylpeptide N-tetradecanoyltransferase.

Mol	Chain	Residues	Atoms					ZeroOcc	AltConf	Trace
			Total	C	N	O	S			
1	A	385	3287	2140	531	604	12	0	23	0
1	B	385	3242	2113	523	594	12	0	15	0
1	C	373	3178	2082	505	580	11	0	21	0

There are 66 discrepancies between the modelled and reference sequences:

Chain	Residue	Modelled	Actual	Comment	Reference
A	6	MET	-	expression tag	UNP A0A1G4HIY1
A	7	GLY	-	expression tag	UNP A0A1G4HIY1
A	8	SER	-	expression tag	UNP A0A1G4HIY1
A	9	SER	-	expression tag	UNP A0A1G4HIY1
A	10	HIS	-	expression tag	UNP A0A1G4HIY1
A	11	HIS	-	expression tag	UNP A0A1G4HIY1
A	12	HIS	-	expression tag	UNP A0A1G4HIY1
A	13	HIS	-	expression tag	UNP A0A1G4HIY1
A	14	HIS	-	expression tag	UNP A0A1G4HIY1
A	15	HIS	-	expression tag	UNP A0A1G4HIY1
A	16	SER	-	expression tag	UNP A0A1G4HIY1
A	17	ALA	-	expression tag	UNP A0A1G4HIY1
A	18	ALA	-	expression tag	UNP A0A1G4HIY1
A	19	LEU	-	expression tag	UNP A0A1G4HIY1
A	20	GLU	-	expression tag	UNP A0A1G4HIY1
A	21	VAL	-	expression tag	UNP A0A1G4HIY1
A	22	LEU	-	expression tag	UNP A0A1G4HIY1
A	23	PHE	-	expression tag	UNP A0A1G4HIY1
A	24	GLN	-	expression tag	UNP A0A1G4HIY1
A	25	GLY	-	expression tag	UNP A0A1G4HIY1
A	26	PRO	-	expression tag	UNP A0A1G4HIY1
A	386	GLU	GLY	engineered mutation	UNP A0A1G4HIY1
B	6	MET	-	expression tag	UNP A0A1G4HIY1

*Continued on next page...*

*Continued from previous page...*

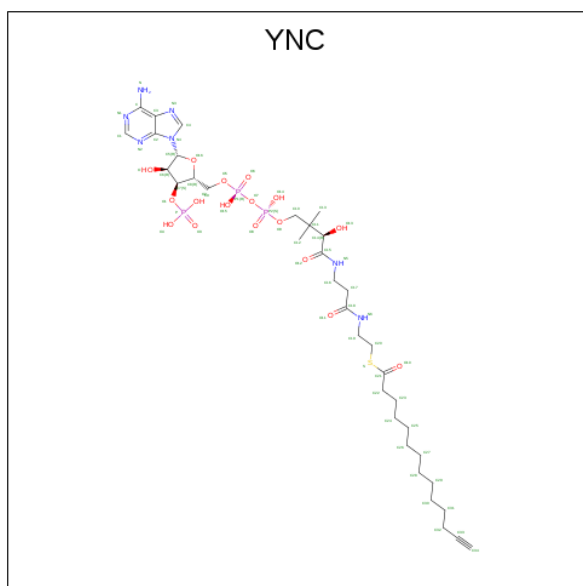
Chain	Residue	Modelled	Actual	Comment	Reference
B	7	GLY	-	expression tag	UNP A0A1G4HIY1
B	8	SER	-	expression tag	UNP A0A1G4HIY1
B	9	SER	-	expression tag	UNP A0A1G4HIY1
B	10	HIS	-	expression tag	UNP A0A1G4HIY1
B	11	HIS	-	expression tag	UNP A0A1G4HIY1
B	12	HIS	-	expression tag	UNP A0A1G4HIY1
B	13	HIS	-	expression tag	UNP A0A1G4HIY1
B	14	HIS	-	expression tag	UNP A0A1G4HIY1
B	15	HIS	-	expression tag	UNP A0A1G4HIY1
B	16	SER	-	expression tag	UNP A0A1G4HIY1
B	17	ALA	-	expression tag	UNP A0A1G4HIY1
B	18	ALA	-	expression tag	UNP A0A1G4HIY1
B	19	LEU	-	expression tag	UNP A0A1G4HIY1
B	20	GLU	-	expression tag	UNP A0A1G4HIY1
B	21	VAL	-	expression tag	UNP A0A1G4HIY1
B	22	LEU	-	expression tag	UNP A0A1G4HIY1
B	23	PHE	-	expression tag	UNP A0A1G4HIY1
B	24	GLN	-	expression tag	UNP A0A1G4HIY1
B	25	GLY	-	expression tag	UNP A0A1G4HIY1
B	26	PRO	-	expression tag	UNP A0A1G4HIY1
B	386	GLU	GLY	engineered mutation	UNP A0A1G4HIY1
C	6	MET	-	expression tag	UNP A0A1G4HIY1
C	7	GLY	-	expression tag	UNP A0A1G4HIY1
C	8	SER	-	expression tag	UNP A0A1G4HIY1
C	9	SER	-	expression tag	UNP A0A1G4HIY1
C	10	HIS	-	expression tag	UNP A0A1G4HIY1
C	11	HIS	-	expression tag	UNP A0A1G4HIY1
C	12	HIS	-	expression tag	UNP A0A1G4HIY1
C	13	HIS	-	expression tag	UNP A0A1G4HIY1
C	14	HIS	-	expression tag	UNP A0A1G4HIY1
C	15	HIS	-	expression tag	UNP A0A1G4HIY1
C	16	SER	-	expression tag	UNP A0A1G4HIY1
C	17	ALA	-	expression tag	UNP A0A1G4HIY1
C	18	ALA	-	expression tag	UNP A0A1G4HIY1
C	19	LEU	-	expression tag	UNP A0A1G4HIY1
C	20	GLU	-	expression tag	UNP A0A1G4HIY1
C	21	VAL	-	expression tag	UNP A0A1G4HIY1
C	22	LEU	-	expression tag	UNP A0A1G4HIY1
C	23	PHE	-	expression tag	UNP A0A1G4HIY1
C	24	GLN	-	expression tag	UNP A0A1G4HIY1
C	25	GLY	-	expression tag	UNP A0A1G4HIY1
C	26	PRO	-	expression tag	UNP A0A1G4HIY1

*Continued on next page...*

Continued from previous page...

Chain	Residue	Modelled	Actual	Comment	Reference
C	386	GLU	GLY	engineered mutation	UNP A0A1G4HIY1

- Molecule 2 is TETRADEC-13-YNOIC ACID - COA THIOESTER (three-letter code: YNC) (formula:  $C_{35}H_{58}N_7O_{17}P_3S$ ).

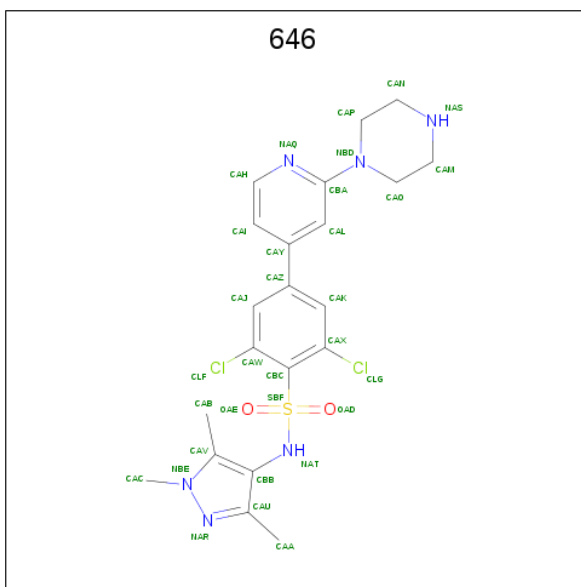


Mol	Chain	Residues	Atoms					ZeroOcc	AltConf	
			Total	C	N	O	P			S
2	A	1	Total	C	N	O	P	S	0	0
			63	35	7	17	3	1		
2	B	1	Total	C	N	O	P	S	0	0
			63	35	7	17	3	1		
2	C	1	Total	C	N	O	P	S	0	0
			63	35	7	17	3	1		

- Molecule 3 is CHLORIDE ION (three-letter code: CL) (formula: Cl).

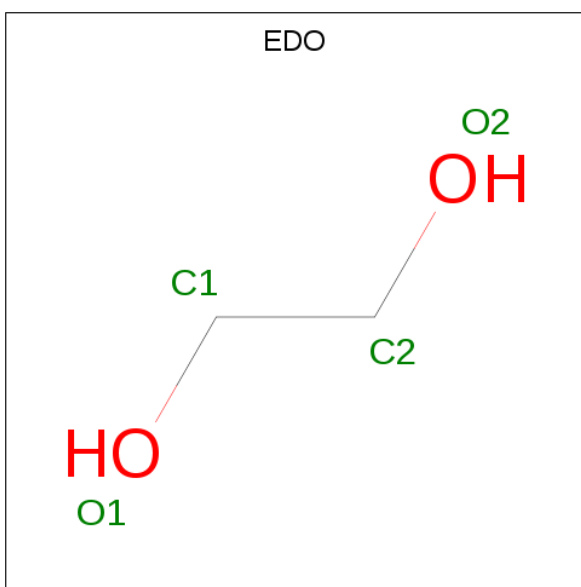
Mol	Chain	Residues	Atoms	ZeroOcc	AltConf
3	B	1	Total 1 Cl	0	0
3	A	1	Total 1 Cl	0	0
3	C	1	Total 1 Cl	0	0

- Molecule 4 is 2,6-dichloro-4-(2-piperazin-1-ylpyridin-4-yl)-N-(1,3,5-trimethyl-1H-pyrazol-4-yl)benzenesulfonamide (three-letter code: 646) (formula:  $C_{21}H_{24}Cl_2N_6O_2S$ ) (labeled as "Ligand of Interest" by author).



Mol	Chain	Residues	Atoms					ZeroOcc	AltConf	
			Total	C	Cl	N	O			S
4	A	1	Total	C	Cl	N	O	S	0	0
			32	21	2	6	2	1		
4	B	1	Total	C	Cl	N	O	S	0	0
			32	21	2	6	2	1		
4	C	1	Total	C	Cl	N	O	S	0	0
			32	21	2	6	2	1		

- Molecule 5 is 1,2-ETHANEDIOL (three-letter code: EDO) (formula: C<sub>2</sub>H<sub>6</sub>O<sub>2</sub>).



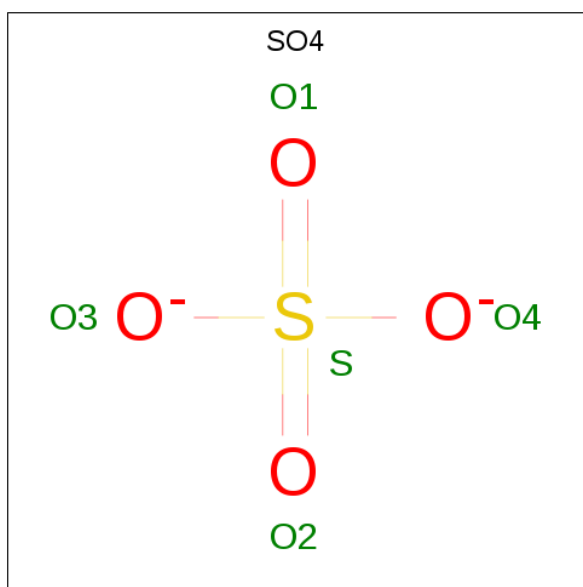
Mol	Chain	Residues	Atoms		ZeroOcc	AltConf
			Total	C O		
5	A	1	Total	C O	0	0
			4	2 2		

*Continued on next page...*

Continued from previous page...

Mol	Chain	Residues	Atoms			ZeroOcc	AltConf
5	B	1	Total	C	O	0	0
			4	2	2		
5	B	1	Total	C	O	0	0
			4	2	2		
5	C	1	Total	C	O	0	0
			4	2	2		

- Molecule 6 is SULFATE ION (three-letter code: SO4) (formula: O<sub>4</sub>S).



Mol	Chain	Residues	Atoms			ZeroOcc	AltConf
6	B	1	Total	O	S	0	0
			5	4	1		
6	C	1	Total	O	S	0	0
			5	4	1		

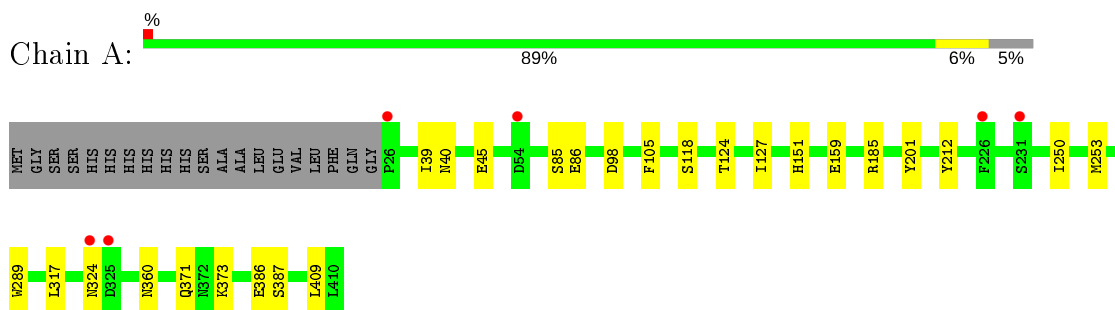
- Molecule 7 is water.

Mol	Chain	Residues	Atoms		ZeroOcc	AltConf
7	A	677	Total	O	0	15
			686	686		
7	B	631	Total	O	0	5
			636	636		
7	C	591	Total	O	0	10
			598	598		

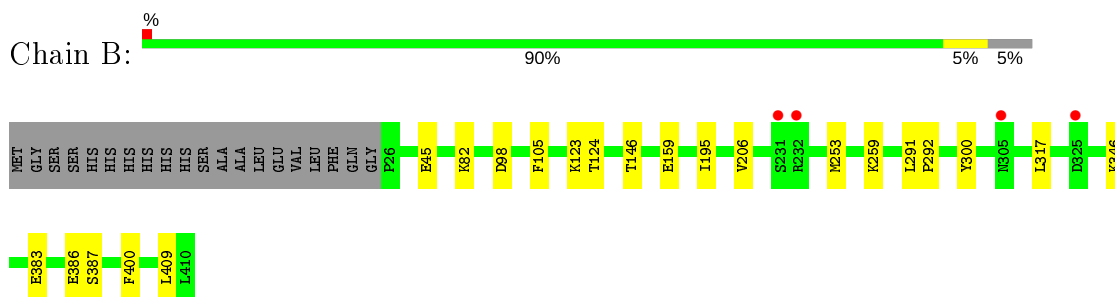
### 3 Residue-property plots [i](#)

These plots are drawn for all protein, RNA and DNA chains in the entry. The first graphic for a chain summarises the proportions of the various outlier classes displayed in the second graphic. The second graphic shows the sequence view annotated by issues in geometry and electron density. Residues are color-coded according to the number of geometric quality criteria for which they contain at least one outlier: green = 0, yellow = 1, orange = 2 and red = 3 or more. A red dot above a residue indicates a poor fit to the electron density ( $RSRZ > 2$ ). Stretches of 2 or more consecutive residues without any outlier are shown as a green connector. Residues present in the sample, but not in the model, are shown in grey.

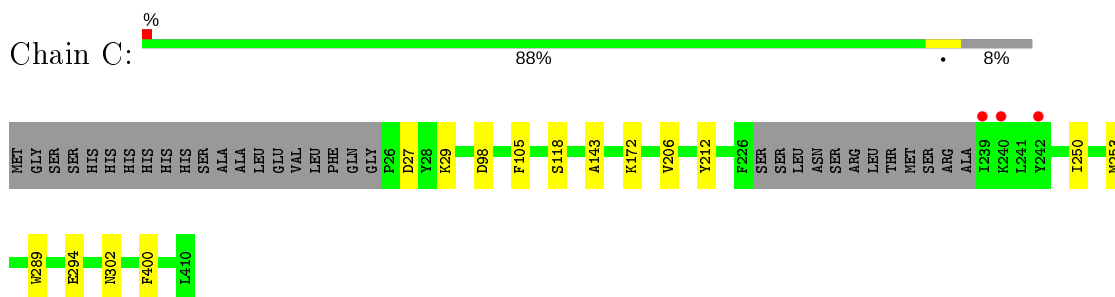
- Molecule 1: Glycylpeptide N-tetradecanoyltransferase



- Molecule 1: Glycylpeptide N-tetradecanoyltransferase



- Molecule 1: Glycylpeptide N-tetradecanoyltransferase





## 4 Data and refinement statistics

Property	Value	Source
Space group	P 21 21 21	Depositor
Cell constants a, b, c, $\alpha$ , $\beta$ , $\gamma$	57.50Å 121.25Å 177.93Å 90.00° 90.00° 90.00°	Depositor
Resolution (Å)	50.00 – 1.55 44.86 – 1.55	Depositor EDS
% Data completeness (in resolution range)	100.0 (50.00-1.55) 100.0 (44.86-1.55)	Depositor EDS
$R_{merge}$	0.07	Depositor
$R_{sym}$	(Not available)	Depositor
$\langle I/\sigma(I) \rangle$ <sup>1</sup>	3.29 (at 1.55Å)	Xtrriage
Refinement program	PHENIX (1.14_3228: ???)	Depositor
R, $R_{free}$	0.145 , 0.166 0.145 , 0.166	Depositor DCC
$R_{free}$ test set	2028 reflections (1.12%)	wwPDB-VP
Wilson B-factor (Å <sup>2</sup> )	12.6	Xtrriage
Anisotropy	0.373	Xtrriage
Bulk solvent $k_{sol}$ (e/Å <sup>3</sup> ), $B_{sol}$ (Å <sup>2</sup> )	0.34 , 53.2	EDS
L-test for twinning <sup>2</sup>	$\langle  L  \rangle = 0.50$ , $\langle L^2 \rangle = 0.33$	Xtrriage
Estimated twinning fraction	No twinning to report.	Xtrriage
$F_o, F_c$ correlation	0.97	EDS
Total number of atoms	11941	wwPDB-VP
Average B, all atoms (Å <sup>2</sup> )	17.0	wwPDB-VP

Xtrriage's analysis on translational NCS is as follows: *The largest off-origin peak in the Patterson function is 3.63% of the height of the origin peak. No significant pseudotranslation is detected.*

<sup>1</sup>Intensities estimated from amplitudes.

<sup>2</sup>Theoretical values of  $\langle |L| \rangle$ ,  $\langle L^2 \rangle$  for acentric reflections are 0.5, 0.333 respectively for untwinned datasets, and 0.375, 0.2 for perfectly twinned datasets.

## 5 Model quality [i](#)

### 5.1 Standard geometry [i](#)

Bond lengths and bond angles in the following residue types are not validated in this section: SO4, YNC, EDO, 646, CL

The Z score for a bond length (or angle) is the number of standard deviations the observed value is removed from the expected value. A bond length (or angle) with  $|Z| > 5$  is considered an outlier worth inspection. RMSZ is the root-mean-square of all Z scores of the bond lengths (or angles).

Mol	Chain	Bond lengths		Bond angles	
		RMSZ	# Z  >5	RMSZ	# Z  >5
1	A	0.36	0/3425	0.56	0/4644
1	B	0.35	0/3368	0.54	0/4564
1	C	0.35	0/3325	0.55	0/4507
All	All	0.35	0/10118	0.55	0/13715

There are no bond length outliers.

There are no bond angle outliers.

There are no chirality outliers.

There are no planarity outliers.

### 5.2 Too-close contacts [i](#)

In the following table, the Non-H and H(model) columns list the number of non-hydrogen atoms and hydrogen atoms in the chain respectively. The H(added) column lists the number of hydrogen atoms added and optimized by MolProbity. The Clashes column lists the number of clashes within the asymmetric unit, whereas Symm-Clashes lists symmetry related clashes.

Mol	Chain	Non-H	H(model)	H(added)	Clashes	Symm-Clashes
1	A	3287	0	3283	22	0
1	B	3242	0	3251	21	0
1	C	3178	0	3188	11	0
2	A	63	0	54	0	0
2	B	63	0	54	0	0
2	C	63	0	54	0	0
3	A	1	0	0	0	0
3	B	1	0	0	0	0
3	C	1	0	0	0	0
4	A	32	0	24	6	0

*Continued on next page...*

*Continued from previous page...*

Mol	Chain	Non-H	H(model)	H(added)	Clashes	Symm-Clashes
4	B	32	0	24	8	0
4	C	32	0	24	5	0
5	A	4	0	6	1	0
5	B	8	0	12	2	0
5	C	4	0	6	0	0
6	B	5	0	0	0	0
6	C	5	0	0	0	0
7	A	686	0	0	9	1
7	B	636	0	0	10	2
7	C	598	0	0	4	3
All	All	11941	0	9980	63	3

The all-atom clashscore is defined as the number of clashes found per 1000 atoms (including hydrogen atoms). The all-atom clashscore for this structure is 3.

All (63) close contacts within the same asymmetric unit are listed below, sorted by their clash magnitude.

Atom-1	Atom-2	Interatomic distance (Å)	Clash overlap (Å)
1:B:45[B]:GLU:OE2	7:B:601:HOH:O	1.98	0.81
1:A:45[B]:GLU:OE2	7:A:1087[B]:HOH:O	2.03	0.76
1:A:86:GLU:OE2	7:A:601:HOH:O	2.14	0.66
4:B:501:646:CLF	7:B:870:HOH:O	2.52	0.65
1:B:259:LYS:NZ	7:B:610:HOH:O	2.33	0.62
1:C:105:PHE:CD1	4:C:502:646:HACA	2.34	0.62
1:B:146:THR:HG21	1:B:159[B]:GLU:HG3	1.83	0.59
1:A:105:PHE:CD1	4:A:503:646:HACA	2.39	0.58
1:A:151[A]:HIS:HE1	7:A:1087[A]:HOH:O	1.86	0.57
4:B:501:646:OAD	7:B:602[A]:HOH:O	2.17	0.56
1:A:40:ASN:OD1	7:A:602:HOH:O	2.18	0.56
4:C:502:646:HABB	4:C:502:646:CAX	2.36	0.55
1:B:105:PHE:CD1	4:B:501:646:HACA	2.42	0.55
1:B:253[B]:MET:HG3	1:B:300:TYR:HB3	1.88	0.54
1:A:124:THR:O	1:A:127[B]:ILE:HD11	2.07	0.53
1:B:123:LYS:HG3	7:B:985:HOH:O	2.09	0.53
4:B:501:646:CAW	4:B:501:646:HABB	2.38	0.53
1:A:250:ILE:HB	1:A:253[B]:MET:HG2	1.90	0.53
1:A:386:GLU:HB3	4:A:503:646:CLF	2.46	0.53
1:B:146:THR:CG2	1:B:159[B]:GLU:HG3	2.40	0.52
1:A:324[A]:ASN:O	7:A:603[A]:HOH:O	2.18	0.52
1:A:159[A]:GLU:OE1	7:A:605:HOH:O	2.19	0.51
1:B:383:GLU:OE2	7:B:603:HOH:O	2.20	0.50

*Continued on next page...*

*Continued from previous page...*

Atom-1	Atom-2	Interatomic distance (Å)	Clash overlap (Å)
1:A:85[B]:SER:OG	7:A:604:HOH:O	2.19	0.50
1:A:127[A]:ILE:HD11	1:A:185:ARG:HD2	1.92	0.49
4:A:503:646:HABB	4:A:503:646:CAW	2.42	0.49
1:B:98:ASP:HA	4:B:501:646:HABA	1.96	0.48
1:C:172[A]:LYS:HE2	7:C:835:HOH:O	2.16	0.46
1:C:294:GLU:OE2	7:C:602:HOH:O	2.21	0.45
1:A:39:ILE:HD11	1:A:201:TYR:CE2	2.52	0.45
4:A:503:646:CLF	7:A:1027:HOH:O	2.58	0.45
1:C:206[B]:VAL:HG22	1:C:400:PHE:CE1	2.52	0.44
1:B:346:LYS:NZ	7:B:619:HOH:O	2.45	0.44
1:A:159[A]:GLU:CD	1:A:409:LEU:HD22	2.39	0.44
4:C:502:646:OAD	7:C:603:HOH:O	2.21	0.44
1:B:124:THR:HG23	7:B:894:HOH:O	2.16	0.43
1:C:98:ASP:HB3	4:C:502:646:HABA	1.99	0.43
1:B:386:GLU:HB3	4:B:501:646:CLF	2.55	0.43
1:A:118:SER:HB3	1:A:289:TRP:CZ2	2.54	0.43
1:A:98:ASP:HA	4:A:503:646:HABA	2.01	0.43
1:A:360[A]:ASN:OD1	7:A:606:HOH:O	2.21	0.43
1:B:291:LEU:HA	1:B:292:PRO:HD3	1.91	0.43
1:B:206[B]:VAL:HG22	1:B:400:PHE:CE2	2.53	0.43
1:A:212:TYR:OH	1:A:373:LYS:HE2	2.18	0.42
1:B:386:GLU:HG3	1:B:387:SER:N	2.34	0.42
1:B:98:ASP:CA	4:B:501:646:HABA	2.49	0.42
1:C:212:TYR:OH	7:C:601:HOH:O	2.20	0.42
1:B:317:LEU:HD23	5:B:504:EDO:H21	2.01	0.42
1:A:371:GLN:HA	5:B:505:EDO:H21	2.01	0.42
1:B:82:LYS:HG3	7:B:708:HOH:O	2.19	0.42
1:C:250:ILE:O	1:C:253[A]:MET:HG2	2.19	0.42
4:B:501:646:CLF	7:B:917:HOH:O	2.59	0.42
1:B:159[A]:GLU:CD	1:B:409:LEU:HD22	2.40	0.42
1:A:317:LEU:HD23	5:A:504:EDO:H12	2.02	0.41
1:A:386:GLU:HG3	1:A:387:SER:N	2.35	0.41
1:C:253[A]:MET:SD	1:C:302:ASN:HB2	2.60	0.41
1:B:159[B]:GLU:HG2	1:B:195:ILE:CG2	2.50	0.41
1:C:118:SER:HB3	1:C:289:TRP:CZ2	2.56	0.41
1:C:27:ASP:HB3	1:C:29:LYS:HE2	2.03	0.41
4:C:502:646:HAB	4:C:502:646:HAC	1.86	0.41
1:A:98:ASP:CA	4:A:503:646:HABA	2.51	0.41
1:B:159[B]:GLU:HG2	1:B:195:ILE:HG23	2.03	0.40

All (3) symmetry-related close contacts are listed below. The label for Atom-2 includes the symmetry operator and encoded unit-cell translations to be applied.

Atom-1	Atom-2	Interatomic distance (Å)	Clash overlap (Å)
7:A:1117:HOH:O	7:C:1125:HOH:O[4_545]	2.18	0.02
7:B:659:HOH:O	7:C:967:HOH:O[3_554]	2.19	0.01
7:B:651:HOH:O	7:C:972:HOH:O[2_544]	2.19	0.01

### 5.3 Torsion angles [i](#)

#### 5.3.1 Protein backbone [i](#)

In the following table, the Percentiles column shows the percent Ramachandran outliers of the chain as a percentile score with respect to all X-ray entries followed by that with respect to entries of similar resolution.

The Analysed column shows the number of residues for which the backbone conformation was analysed, and the total number of residues.

Mol	Chain	Analysed	Favoured	Allowed	Outliers	Percentiles	
1	A	406/405 (100%)	398 (98%)	8 (2%)	0	100	100
1	B	398/405 (98%)	389 (98%)	9 (2%)	0	100	100
1	C	390/405 (96%)	383 (98%)	7 (2%)	0	100	100
All	All	1194/1215 (98%)	1170 (98%)	24 (2%)	0	100	100

There are no Ramachandran outliers to report.

#### 5.3.2 Protein sidechains [i](#)

In the following table, the Percentiles column shows the percent sidechain outliers of the chain as a percentile score with respect to all X-ray entries followed by that with respect to entries of similar resolution.

The Analysed column shows the number of residues for which the sidechain conformation was analysed, and the total number of residues.

Mol	Chain	Analysed	Rotameric	Outliers	Percentiles	
1	A	367/368 (100%)	367 (100%)	0	100	100
1	B	363/368 (99%)	363 (100%)	0	100	100
1	C	356/368 (97%)	356 (100%)	0	100	100
All	All	1086/1104 (98%)	1086 (100%)	0	100	100

There are no protein residues with a non-rotameric sidechain to report.

Some sidechains can be flipped to improve hydrogen bonding and reduce clashes. All (2) such sidechains are listed below:

Mol	Chain	Res	Type
1	A	106	ASN
1	B	106	ASN

### 5.3.3 RNA [i](#)

There are no RNA molecules in this entry.

## 5.4 Non-standard residues in protein, DNA, RNA chains [i](#)

There are no non-standard protein/DNA/RNA residues in this entry.

## 5.5 Carbohydrates [i](#)

There are no carbohydrates in this entry.

## 5.6 Ligand geometry [i](#)

Of 15 ligands modelled in this entry, 3 are monoatomic - leaving 12 for Mogul analysis.

In the following table, the Counts columns list the number of bonds (or angles) for which Mogul statistics could be retrieved, the number of bonds (or angles) that are observed in the model and the number of bonds (or angles) that are defined in the Chemical Component Dictionary. The Link column lists molecule types, if any, to which the group is linked. The Z score for a bond length (or angle) is the number of standard deviations the observed value is removed from the expected value. A bond length (or angle) with  $|Z| > 2$  is considered an outlier worth inspection. RMSZ is the root-mean-square of all Z scores of the bond lengths (or angles).

Mol	Type	Chain	Res	Link	Bond lengths			Bond angles		
					Counts	RMSZ	# Z  > 2	Counts	RMSZ	# Z  > 2
5	EDO	B	505	-	3,3,3	0.40	0	2,2,2	0.08	0
4	646	B	501	-	30,35,35	3.65	7 (23%)	42,52,52	1.73	9 (21%)
4	646	A	503	-	30,35,35	3.64	7 (23%)	42,52,52	1.77	7 (16%)
5	EDO	C	504	-	3,3,3	0.46	0	2,2,2	0.43	0
2	YNC	B	502	-	57,65,65	1.78	6 (10%)	68,91,91	3.28	6 (8%)
5	EDO	B	504	-	3,3,3	0.41	0	2,2,2	0.40	0
5	EDO	A	504	-	3,3,3	0.43	0	2,2,2	0.49	0
2	YNC	C	501	-	57,65,65	1.80	4 (7%)	68,91,91	3.37	6 (8%)
4	646	C	502	-	30,35,35	3.60	7 (23%)	42,52,52	1.54	9 (21%)

Mol	Type	Chain	Res	Link	Bond lengths			Bond angles		
					Counts	RMSZ	# Z  > 2	Counts	RMSZ	# Z  > 2
2	YNC	A	501	-	57,65,65	1.80	6 (10%)	68,91,91	3.27	6 (8%)
6	SO4	C	505	-	4,4,4	0.12	0	6,6,6	0.08	0
6	SO4	B	506	-	4,4,4	0.17	0	6,6,6	0.21	0

In the following table, the Chirals column lists the number of chiral outliers, the number of chiral centers analysed, the number of these observed in the model and the number defined in the Chemical Component Dictionary. Similar counts are reported in the Torsion and Rings columns. '-' means no outliers of that kind were identified.

Mol	Type	Chain	Res	Link	Chirals	Torsions	Rings
5	EDO	B	505	-	-	0/1/1/1	-
4	646	B	501	-	-	0/17/27/27	0/4/4/4
4	646	A	503	-	-	0/17/27/27	0/4/4/4
5	EDO	C	504	-	-	0/1/1/1	-
2	YNC	B	502	-	-	2/59/80/80	0/3/3/3
5	EDO	B	504	-	-	0/1/1/1	-
5	EDO	A	504	-	-	0/1/1/1	-
2	YNC	C	501	-	-	0/59/80/80	0/3/3/3
4	646	C	502	-	-	0/17/27/27	0/4/4/4
2	YNC	A	501	-	-	0/59/80/80	0/3/3/3

All (37) bond length outliers are listed below:

Mol	Chain	Res	Type	Atoms	Z	Observed(Å)	Ideal(Å)
4	A	503	646	OAD-SBF	12.75	1.58	1.43
4	B	501	646	OAE-SBF	12.71	1.58	1.43
4	A	503	646	OAE-SBF	12.67	1.57	1.43
4	B	501	646	OAD-SBF	12.58	1.57	1.43
4	C	502	646	OAD-SBF	12.54	1.57	1.43
4	C	502	646	OAE-SBF	12.26	1.57	1.43
2	C	501	YNC	C33-C34	11.58	1.52	1.18
2	B	502	YNC	C33-C34	11.51	1.52	1.18
2	A	501	YNC	C33-C34	11.42	1.52	1.18
4	B	501	646	SBF-NAT	5.32	1.72	1.63
4	A	503	646	SBF-NAT	5.15	1.72	1.63
4	C	502	646	SBF-NAT	4.91	1.71	1.63
4	A	503	646	CBC-SBF	3.80	1.84	1.79
4	C	502	646	CAW-CLF	3.66	1.82	1.73
4	C	502	646	CBC-SBF	3.65	1.84	1.79
4	B	501	646	CBC-SBF	3.60	1.84	1.79
4	B	501	646	CAW-CLF	3.45	1.81	1.73
4	A	503	646	CAW-CLF	3.34	1.81	1.73

Continued on next page...

Continued from previous page...

Mol	Chain	Res	Type	Atoms	Z	Observed(Å)	Ideal(Å)
4	C	502	646	CAV-NBE	-3.26	1.32	1.37
2	C	501	YNC	C21-S	-3.01	1.68	1.76
4	C	502	646	CAX-CLG	2.99	1.80	1.73
2	A	501	YNC	C32-C33	2.92	1.54	1.47
4	B	501	646	CAX-CLG	2.90	1.80	1.73
2	A	501	YNC	C21-S	-2.86	1.69	1.76
2	B	502	YNC	C32-C33	2.79	1.53	1.47
4	B	501	646	CAV-NBE	-2.74	1.33	1.37
2	C	501	YNC	C32-C33	2.66	1.53	1.47
4	A	503	646	CAX-CLG	2.62	1.79	1.73
4	A	503	646	CAV-NBE	-2.53	1.33	1.37
2	A	501	YNC	C3-C2	2.45	1.47	1.40
2	B	502	YNC	C21-S	-2.36	1.70	1.76
2	C	501	YNC	C3-C2	2.25	1.46	1.40
2	B	502	YNC	C3-C2	2.21	1.46	1.40
2	A	501	YNC	P-O1	2.15	1.63	1.59
2	A	501	YNC	C1-N2	2.07	1.35	1.32
2	B	502	YNC	C6-C5	-2.06	1.50	1.53
2	B	502	YNC	O10-C21	2.01	1.24	1.21

All (43) bond angle outliers are listed below:

Mol	Chain	Res	Type	Atoms	Z	Observed(°)	Ideal(°)
2	C	501	YNC	C32-C33-C34	-25.44	110.85	177.14
2	A	501	YNC	C32-C33-C34	-25.00	111.99	177.14
2	B	502	YNC	C32-C33-C34	-24.72	112.73	177.14
2	C	501	YNC	C22-C21-S	5.92	120.35	113.46
4	A	503	646	CBC-SBF-NAT	-5.47	100.52	106.68
2	A	501	YNC	C22-C21-S	5.42	119.77	113.46
2	B	502	YNC	C22-C21-S	5.36	119.70	113.46
2	B	502	YNC	O10-C21-C22	-5.27	117.77	123.99
4	B	501	646	CBC-SBF-NAT	-4.96	101.09	106.68
4	C	502	646	CBC-SBF-NAT	-4.82	101.25	106.68
4	B	501	646	CAW-CBC-SBF	-4.78	120.10	123.27
4	A	503	646	OAE-SBF-OAD	-4.54	113.96	119.55
4	A	503	646	CAW-CBC-SBF	-4.35	120.39	123.27
2	C	501	YNC	O10-C21-C22	-4.34	118.86	123.99
2	C	501	YNC	N2-C1-N1	-3.84	122.68	128.68
2	A	501	YNC	O10-C21-C22	-3.82	119.48	123.99
2	B	502	YNC	N2-C1-N1	-3.61	123.04	128.68
4	B	501	646	CAY-CAL-CBA	3.55	119.51	118.25
4	B	501	646	OAE-SBF-OAD	-3.42	115.34	119.55

Continued on next page...



*Continued from previous page...*

Mol	Chain	Res	Type	Atoms	Z	Observed(°)	Ideal(°)
4	A	503	646	CAY-CAL-CBA	3.26	119.40	118.25
4	C	502	646	OAE-SBF-OAD	-3.12	115.71	119.55
2	C	501	YNC	C1-N1-C	2.92	123.75	118.75
4	C	502	646	CAJ-CAW-CLF	-2.90	113.81	118.49
4	A	503	646	CAH-NAQ-CBA	2.86	120.63	116.86
4	C	502	646	CAK-CAX-CLG	-2.65	114.22	118.49
2	A	501	YNC	N2-C1-N1	-2.64	124.56	128.68
4	C	502	646	CAX-CBC-SBF	-2.54	121.58	123.27
4	C	502	646	CAH-NAQ-CBA	2.53	120.20	116.86
4	B	501	646	CAH-NAQ-CBA	2.50	120.16	116.86
2	A	501	YNC	C23-C22-C21	-2.46	106.87	112.33
4	B	501	646	CAV-CBB-CAU	-2.45	105.09	107.29
2	B	502	YNC	C1-N1-C	2.45	122.94	118.75
4	B	501	646	CAJ-CAW-CLF	-2.36	114.69	118.49
4	A	503	646	OAE-SBF-NAT	2.26	112.40	106.73
4	C	502	646	OAE-SBF-NAT	2.25	112.36	106.73
4	B	501	646	CAK-CAX-CLG	-2.20	114.95	118.49
4	A	503	646	CAK-CAX-CLG	-2.11	115.08	118.49
4	C	502	646	CAW-CBC-SBF	-2.09	121.88	123.27
2	C	501	YNC	C23-C22-C21	-2.09	107.69	112.33
4	B	501	646	CAH-CAI-CAY	-2.08	116.48	119.57
2	B	502	YNC	C5-N4-C2	-2.06	123.02	126.64
2	A	501	YNC	C1-N1-C	2.02	122.22	118.75
4	C	502	646	CAH-CAI-CAY	-2.01	116.58	119.57

There are no chirality outliers.

All (2) torsion outliers are listed below:

Mol	Chain	Res	Type	Atoms
2	B	502	YNC	C17-C16-N5-C15
2	B	502	YNC	C24-C25-C26-C27

There are no ring outliers.

6 monomers are involved in 22 short contacts:

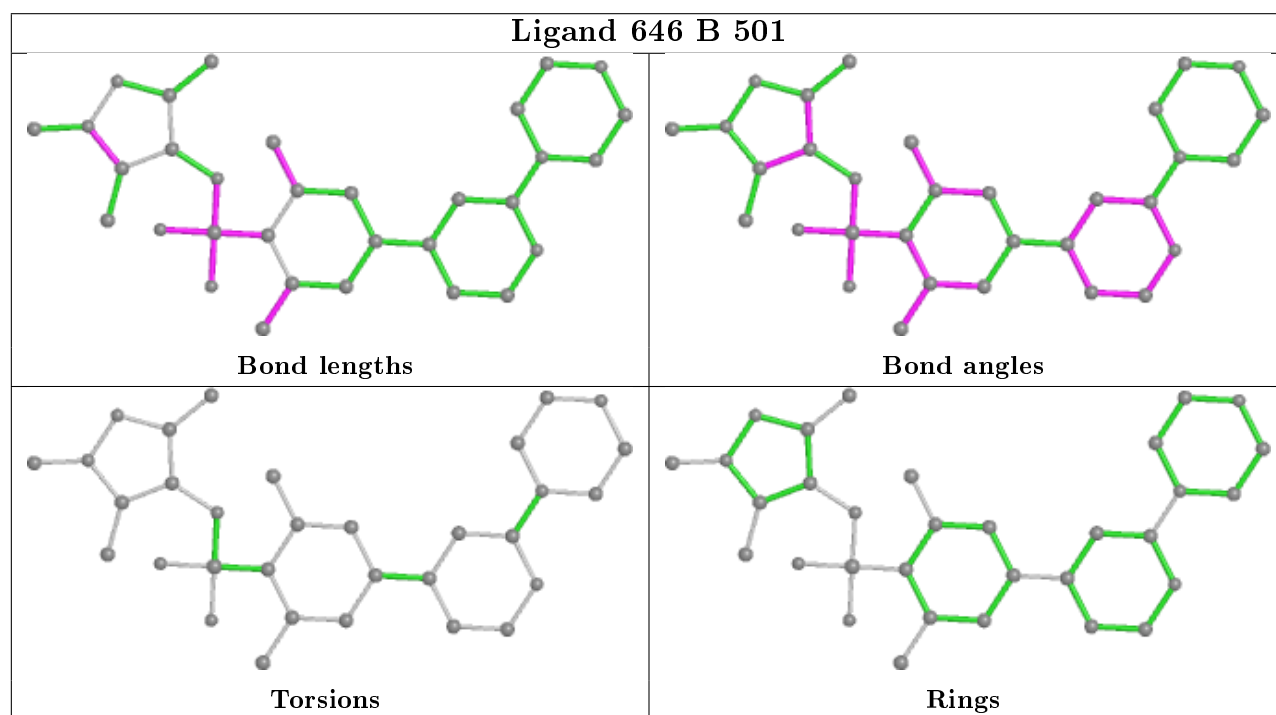
Mol	Chain	Res	Type	Clashes	Symm-Clashes
5	B	505	EDO	1	0
4	B	501	646	8	0
4	A	503	646	6	0
5	B	504	EDO	1	0
5	A	504	EDO	1	0

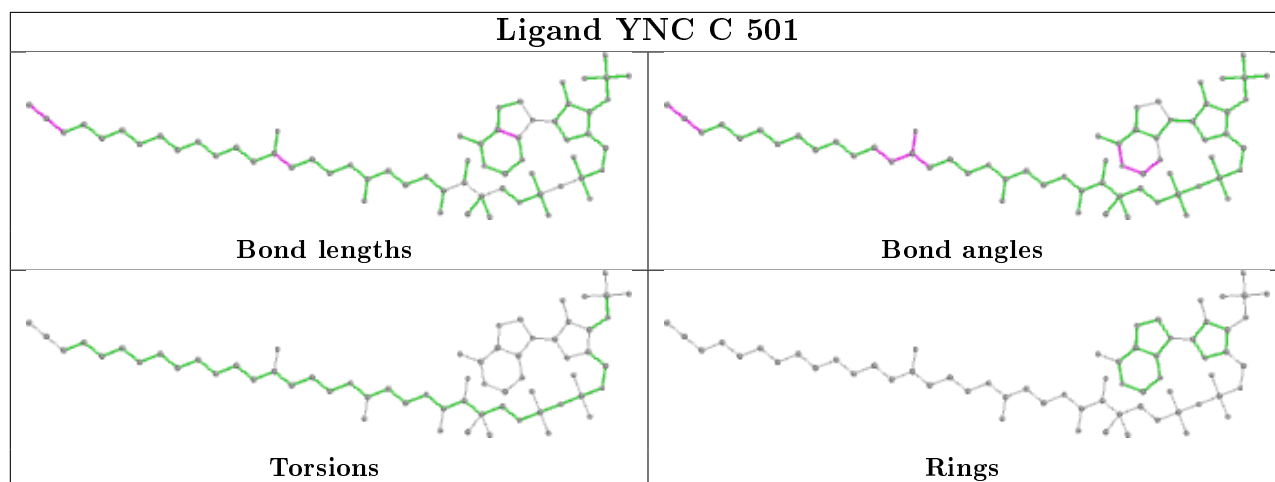
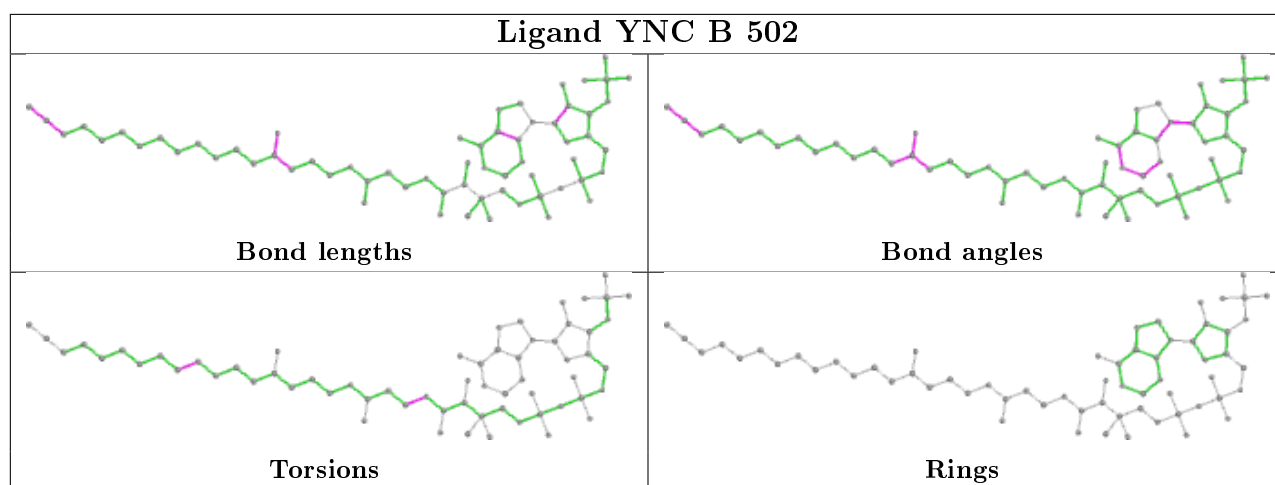
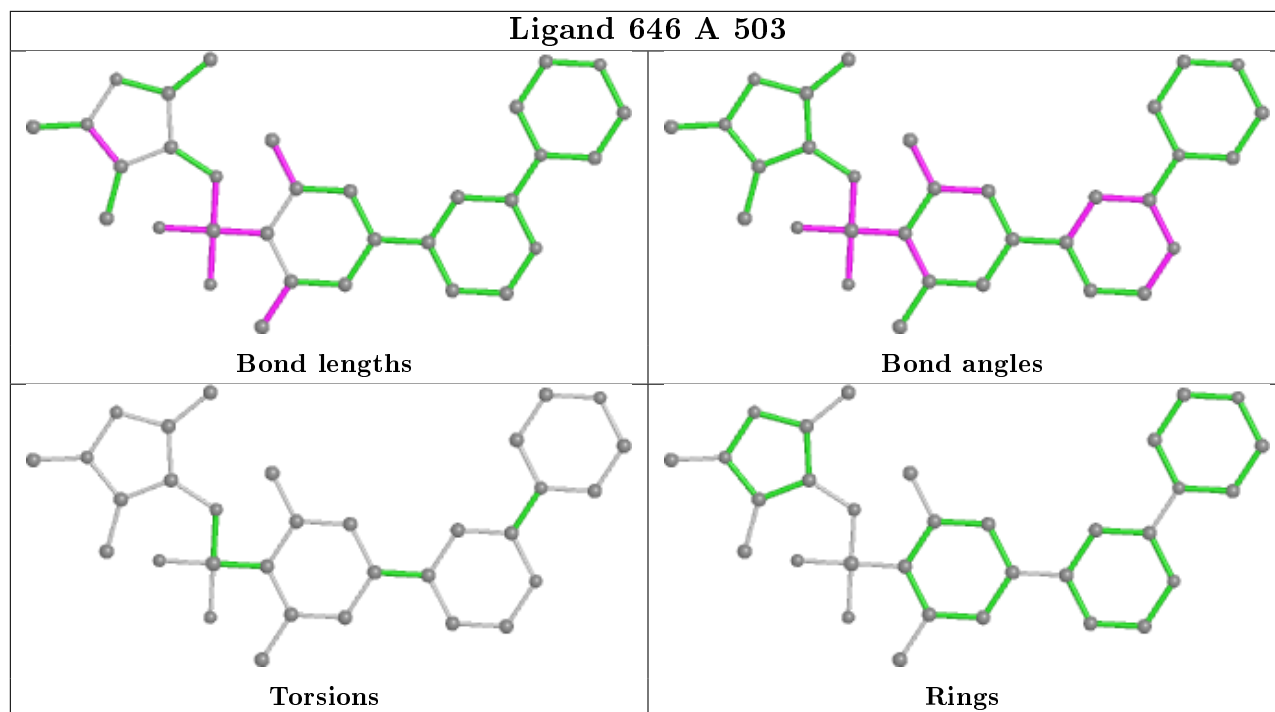
*Continued on next page...*

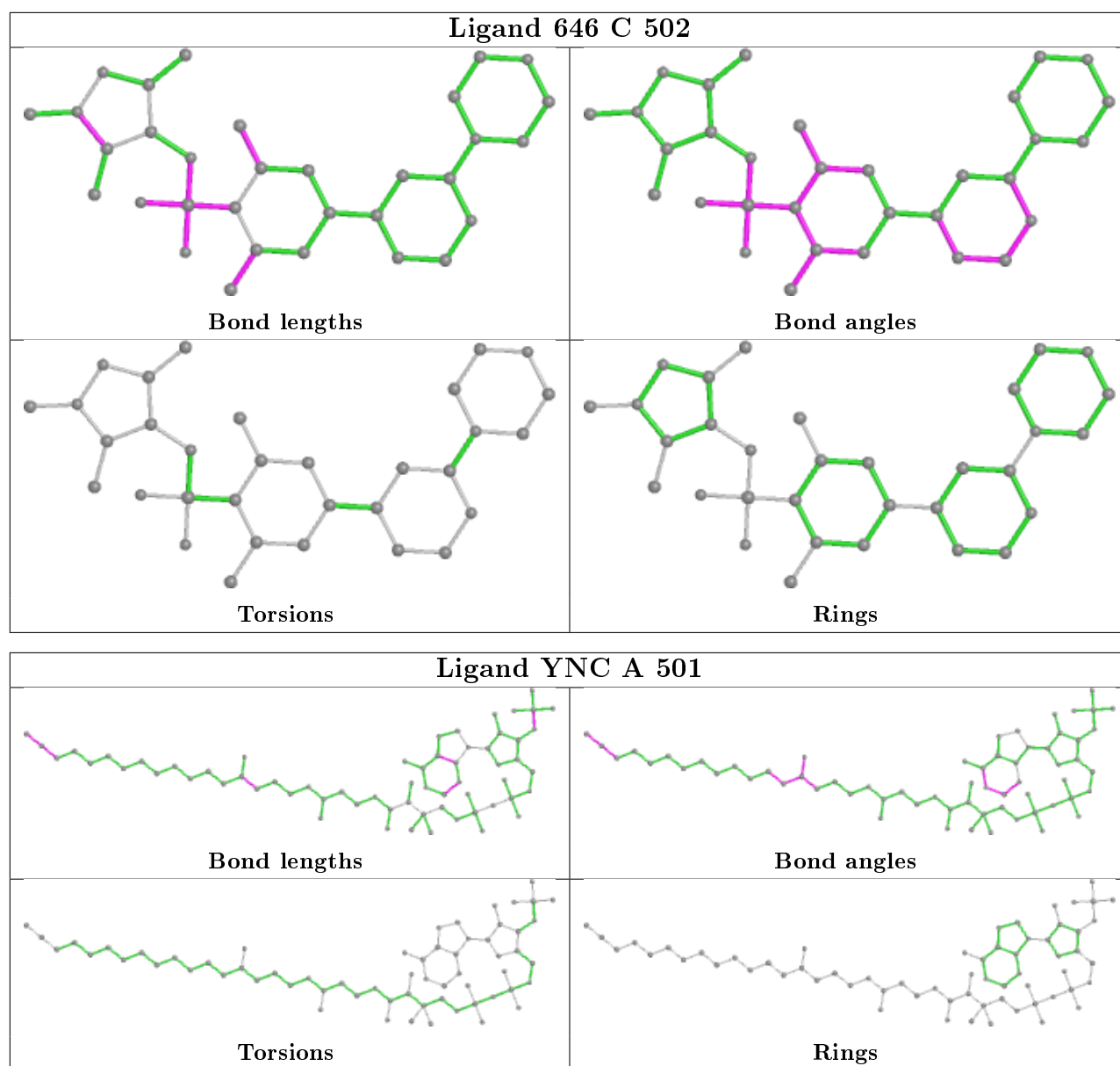
Continued from previous page...

Mol	Chain	Res	Type	Clashes	Symm-Clashes
4	C	502	646	5	0

The following is a two-dimensional graphical depiction of Mogul quality analysis of bond lengths, bond angles, torsion angles, and ring geometry for all instances of the Ligand of Interest. In addition, ligands with molecular weight > 250 and outliers as shown on the validation Tables will also be included. For torsion angles, if less than 5% of the Mogul distribution of torsion angles is within 10 degrees of the torsion angle in question, then that torsion angle is considered an outlier. Any bond that is central to one or more torsion angles identified as an outlier by Mogul will be highlighted in the graph. For rings, the root-mean-square deviation (RMSD) between the ring in question and similar rings identified by Mogul is calculated over all ring torsion angles. If the average RMSD is greater than 60 degrees and the minimal RMSD between the ring in question and any Mogul-identified rings is also greater than 60 degrees, then that ring is considered an outlier. The outliers are highlighted in purple. The color gray indicates Mogul did not find sufficient equivalents in the CSD to analyse the geometry.







## 5.7 Other polymers [\(i\)](#)

There are no such residues in this entry.

## 5.8 Polymer linkage issues [\(i\)](#)

There are no chain breaks in this entry.

## 6 Fit of model and data [i](#)

### 6.1 Protein, DNA and RNA chains [i](#)

In the following table, the column labelled '#RSRZ > 2' contains the number (and percentage) of RSRZ outliers, followed by percent RSRZ outliers for the chain as percentile scores relative to all X-ray entries and entries of similar resolution. The OWAB column contains the minimum, median, 95<sup>th</sup> percentile and maximum values of the occupancy-weighted average B-factor per residue. The column labelled 'Q < 0.9' lists the number of (and percentage) of residues with an average occupancy less than 0.9.

Mol	Chain	Analysed	<RSRZ>	#RSRZ>2	OWAB(Å <sup>2</sup> )	Q<0.9
1	A	385/405 (95%)	-0.41	6 (1%) 72 77	8, 12, 29, 53	0
1	B	385/405 (95%)	-0.35	4 (1%) 82 86	8, 13, 30, 49	0
1	C	373/405 (92%)	-0.35	3 (0%) 86 89	8, 13, 32, 58	0
All	All	1143/1215 (94%)	-0.37	13 (1%) 80 84	8, 13, 30, 58	0

All (13) RSRZ outliers are listed below:

Mol	Chain	Res	Type	RSRZ
1	B	231	SER	4.1
1	C	239	ILE	3.7
1	B	305[A]	ASN	3.3
1	C	242	TYR	2.9
1	B	232	ARG	2.9
1	A	325[A]	ASP	2.6
1	C	240	LYS	2.5
1	A	54	ASP	2.2
1	A	231	SER	2.2
1	A	226	PHE	2.1
1	A	26	PRO	2.1
1	A	324[A]	ASN	2.1
1	B	325	ASP	2.1

### 6.2 Non-standard residues in protein, DNA, RNA chains [i](#)

There are no non-standard protein/DNA/RNA residues in this entry.

### 6.3 Carbohydrates [i](#)

There are no carbohydrates in this entry.

## 6.4 Ligands

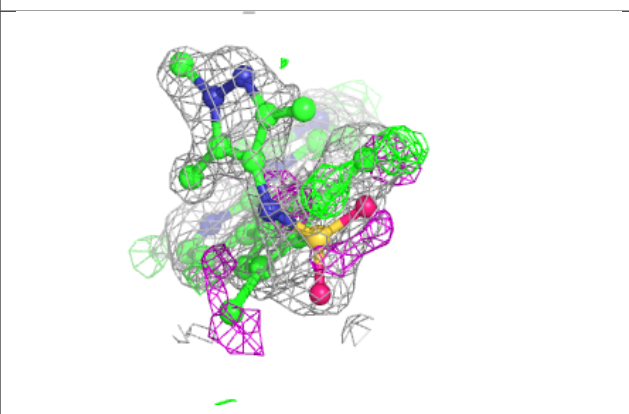
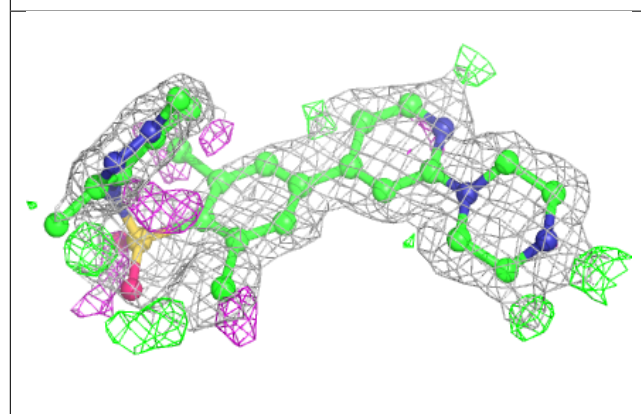
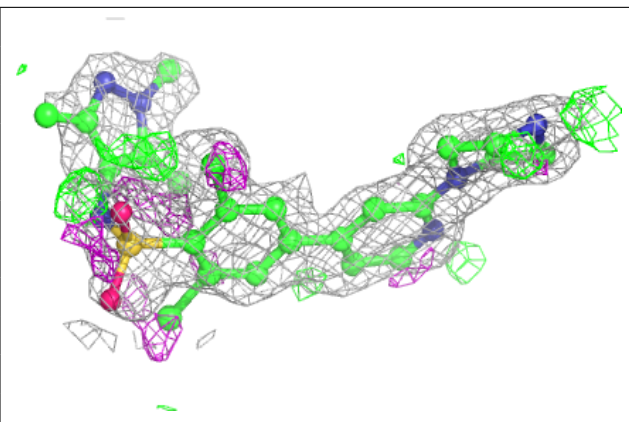
In the following table, the Atoms column lists the number of modelled atoms in the group and the number defined in the chemical component dictionary. The B-factors column lists the minimum, median, 95<sup>th</sup> percentile and maximum values of B factors of atoms in the group. The column labelled 'Q< 0.9' lists the number of atoms with occupancy less than 0.9.

Mol	Type	Chain	Res	Atoms	RSCC	RSR	B-factors(Å <sup>2</sup> )	Q<0.9
5	EDO	B	505	4/4	0.77	0.19	25,31,35,36	0
4	646	B	501	32/32	0.85	0.15	22,30,48,85	0
6	SO4	C	505	5/5	0.85	0.22	69,73,75,81	0
4	646	A	503	32/32	0.87	0.17	18,27,55,81	0
4	646	C	502	32/32	0.90	0.11	18,23,45,73	0
5	EDO	C	504	4/4	0.94	0.09	18,18,19,21	0
5	EDO	A	504	4/4	0.95	0.09	19,20,20,21	0
6	SO4	B	506	5/5	0.96	0.11	41,42,45,51	0
5	EDO	B	504	4/4	0.97	0.06	19,21,22,22	0
2	YNC	C	501	63/63	0.98	0.06	8,10,14,15	0
2	YNC	B	502	63/63	0.98	0.06	8,10,13,14	0
2	YNC	A	501	63/63	0.98	0.06	7,10,12,15	0
3	CL	C	503	1/1	1.00	0.04	10,10,10,10	0
3	CL	A	502	1/1	1.00	0.05	10,10,10,10	0
3	CL	B	503	1/1	1.00	0.05	10,10,10,10	0

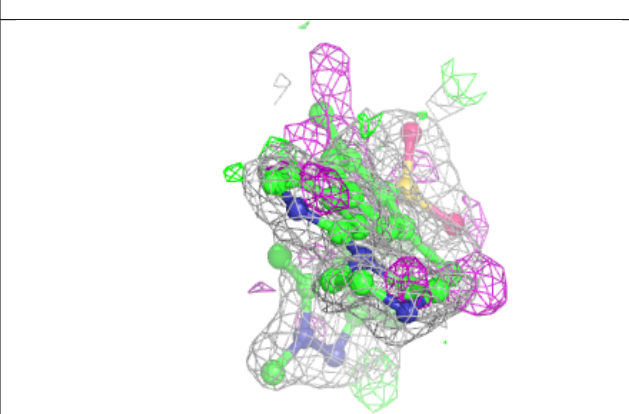
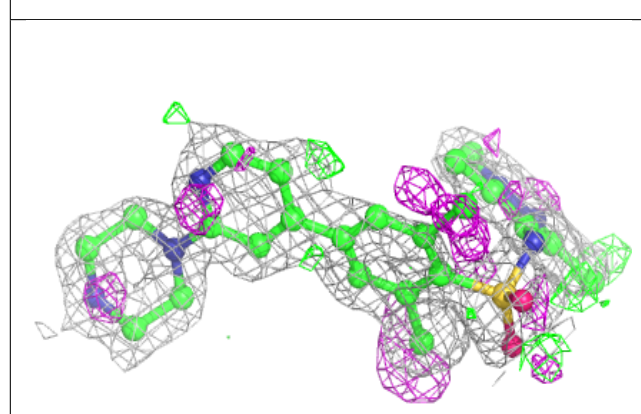
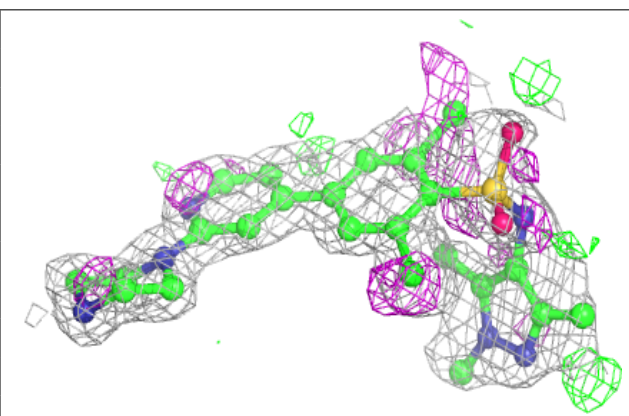
The following is a graphical depiction of the model fit to experimental electron density of all instances of the Ligand of Interest. In addition, ligands with molecular weight > 250 and outliers as shown on the geometry validation Tables will also be included. Each fit is shown from different orientation to approximate a three-dimensional view.

**Electron density around 646 B 501:**

$2mF_o-DF_c$  (at 0.7 rmsd) in gray  
 $mF_o-DF_c$  (at 3 rmsd) in purple (negative)  
and green (positive)

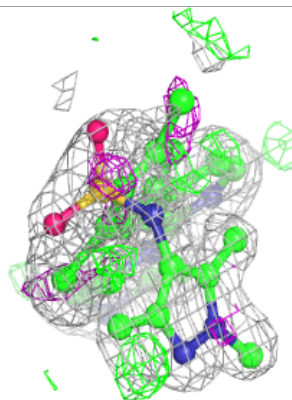
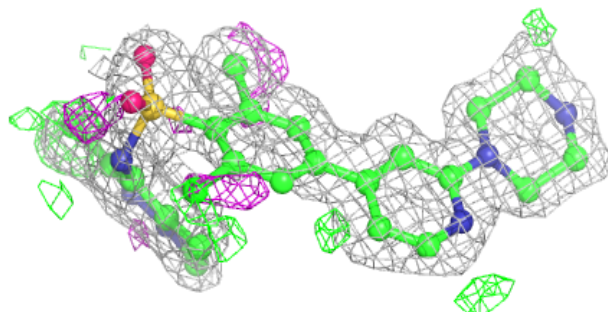
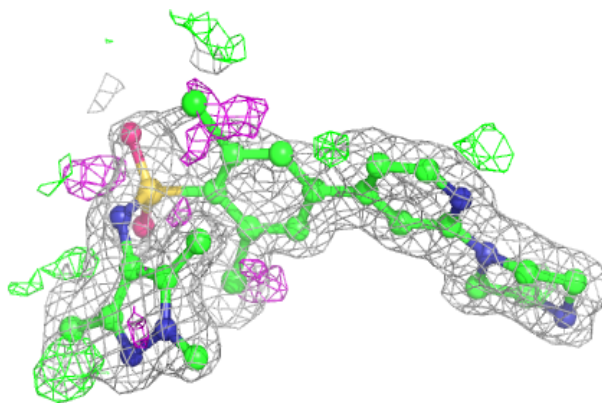
**Electron density around 646 A 503:**

$2mF_o-DF_c$  (at 0.7 rmsd) in gray  
 $mF_o-DF_c$  (at 3 rmsd) in purple (negative)  
and green (positive)

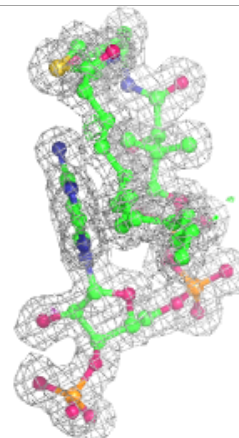
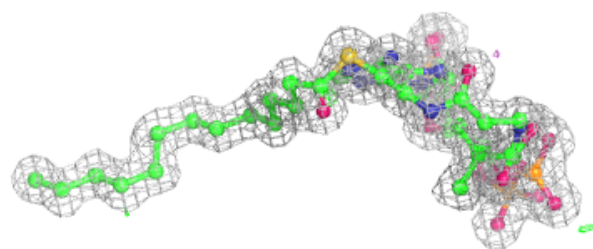
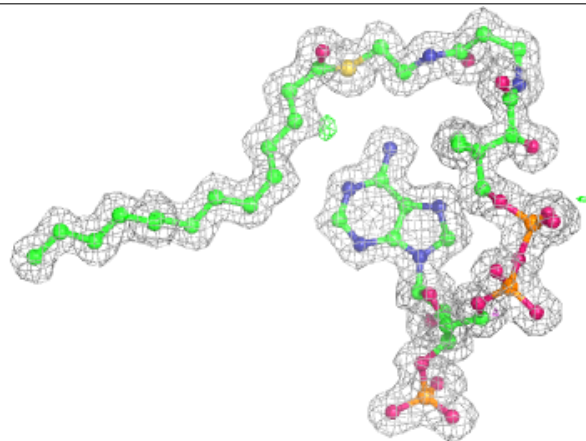


**Electron density around 646 C 502:**

$2mF_o-DF_c$  (at 0.7 rmsd) in gray  
 $mF_o-DF_c$  (at 3 rmsd) in purple (negative)  
and green (positive)

**Electron density around YNC C 501:**

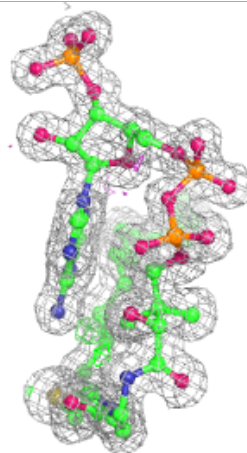
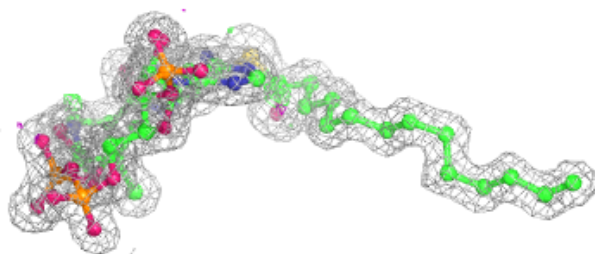
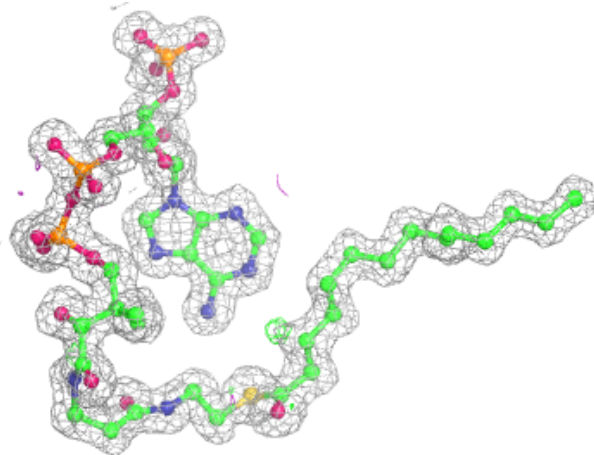
$2mF_o-DF_c$  (at 0.7 rmsd) in gray  
 $mF_o-DF_c$  (at 3 rmsd) in purple (negative)  
and green (positive)

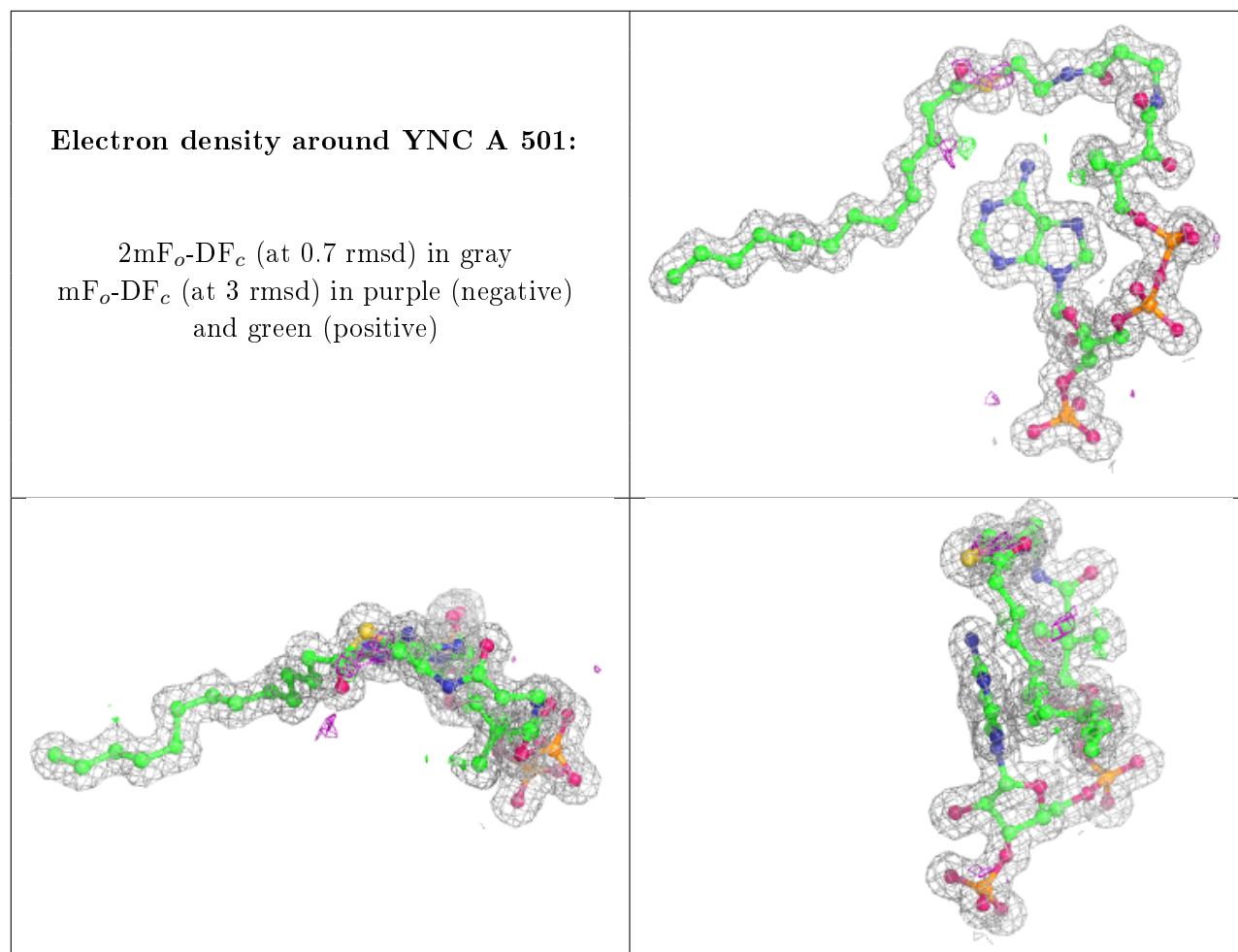




**Electron density around YNC B 502:**

$2mF_o-DF_c$  (at 0.7 rmsd) in gray  
 $mF_o-DF_c$  (at 3 rmsd) in purple (negative)  
and green (positive)





## 6.5 Other polymers [i](#)

There are no such residues in this entry.