



# Full wwPDB X-ray Structure Validation Report ⓘ

Jun 18, 2024 – 11:52 AM EDT

PDB ID : 4M9Y  
Title : Crystal structure of CED-4 bound CED-3 fragment  
Authors : Huang, W.J.; Jinag, T.Y.; Choi, W.Y.; Wang, J.W.; Shi, Y.G.  
Deposited on : 2013-08-15  
Resolution : 4.20 Å(reported)

This is a Full wwPDB X-ray Structure Validation Report for a publicly released PDB entry.

We welcome your comments at [validation@mail.wwpdb.org](mailto:validation@mail.wwpdb.org)

A user guide is available at

<https://www.wwpdb.org/validation/2017/XrayValidationReportHelp>

with specific help available everywhere you see the ⓘ symbol.

The types of validation reports are described at

<http://www.wwpdb.org/validation/2017/FAQs#types>.

---

The following versions of software and data (see [references ⓘ](#)) were used in the production of this report:

MolProbity : 4.02b-467  
Mogul : 2022.3.0, CSD as543be (2022)  
Xtriage (Phenix) : 1.20.1  
EDS : 2.37.1  
buster-report : 1.1.7 (2018)  
Percentile statistics : 20191225.v01 (using entries in the PDB archive December 25th 2019)  
Refmac : 5.8.0158  
CCP4 : 7.0.044 (Gargrove)  
Ideal geometry (proteins) : Engh & Huber (2001)  
Ideal geometry (DNA, RNA) : Parkinson et al. (1996)  
Validation Pipeline (wwPDB-VP) : 2.37.1

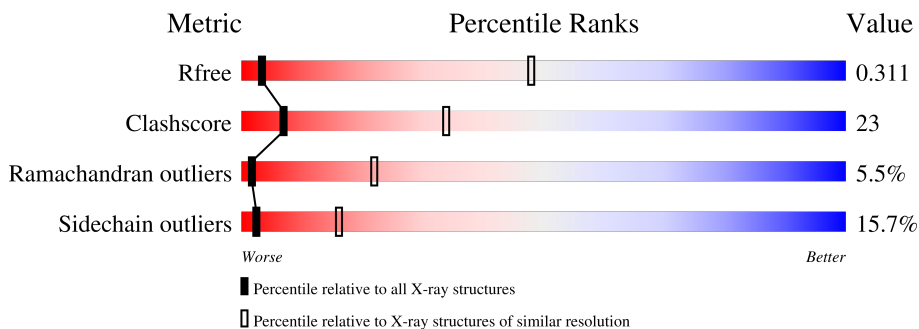
# 1 Overall quality at a glance

The following experimental techniques were used to determine the structure:

*X-RAY DIFFRACTION*

The reported resolution of this entry is 4.20 Å.

Percentile scores (ranging between 0-100) for global validation metrics of the entry are shown in the following graphic. The table shows the number of entries on which the scores are based.



Metric	Whole archive (#Entries)	Similar resolution (#Entries, resolution range(Å))
$R_{free}$	130704	1005 (4.62-3.78)
Clashscore	141614	1044 (4.60-3.80)
Ramachandran outliers	138981	1000 (4.60-3.80)
Sidechain outliers	138945	1007 (4.62-3.78)

The table below summarises the geometric issues observed across the polymeric chains and their fit to the electron density. The red, orange, yellow and green segments of the lower bar indicate the fraction of residues that contain outliers for  $\geq 3$ , 2, 1 and 0 types of geometric quality criteria respectively. A grey segment represents the fraction of residues that are not modelled. The numeric value for each fraction is indicated below the corresponding segment, with a dot representing fractions  $\leq 5\%$

Mol	Chain	Length	Quality of chain
1	A	549	
1	B	549	
2	C	8	
2	D	8	

## 2 Entry composition

There are 4 unique types of molecules in this entry. The entry contains 8349 atoms, of which 0 are hydrogens and 0 are deuteriums.

In the tables below, the ZeroOcc column contains the number of atoms modelled with zero occupancy, the AltConf column contains the number of residues with at least one atom in alternate conformation and the Trace column contains the number of residues modelled with at most 2 atoms.

- Molecule 1 is a protein called Cell death protein 4.

Mol	Chain	Residues	Atoms						ZeroOcc	AltConf	Trace
			Total	C	N	O	S	Se			
1	A	510	Total 4088	C 2606	N 685	O 767	S 13	Se 17	0	0	0
1	B	511	Total 4094	C 2607	N 688	O 768	S 14	Se 17	0	0	0

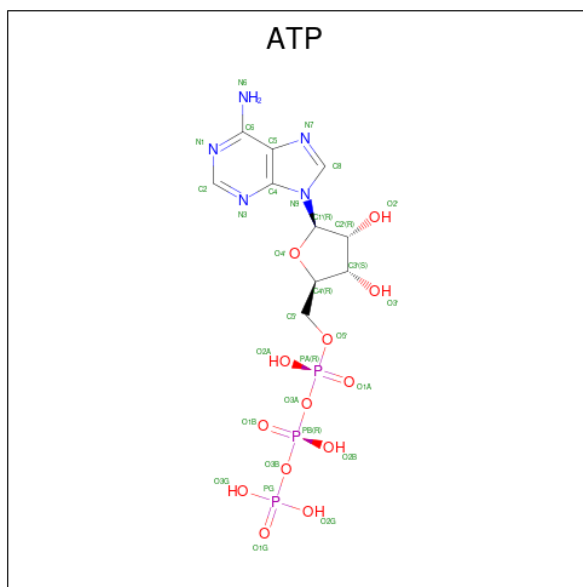
- Molecule 2 is a protein called CED-3 fragment.

Mol	Chain	Residues	Atoms					ZeroOcc	AltConf	Trace
			Total	C	N	O	Se			
2	C	7	Total 57	C 40	N 8	O 8	Se 1	0	0	0
2	D	5	Total 46	C 33	N 6	O 6	Se 1	0	0	0

- Molecule 3 is MAGNESIUM ION (three-letter code: MG) (formula: Mg).

Mol	Chain	Residues	Atoms		ZeroOcc	AltConf
3	A	1	Total 1	Mg 1	0	0
3	B	1	Total 1	Mg 1	0	0

- Molecule 4 is ADENOSINE-5'-TRIPHOSPHATE (three-letter code: ATP) (formula: C<sub>10</sub>H<sub>16</sub>N<sub>5</sub>O<sub>13</sub>P<sub>3</sub>).

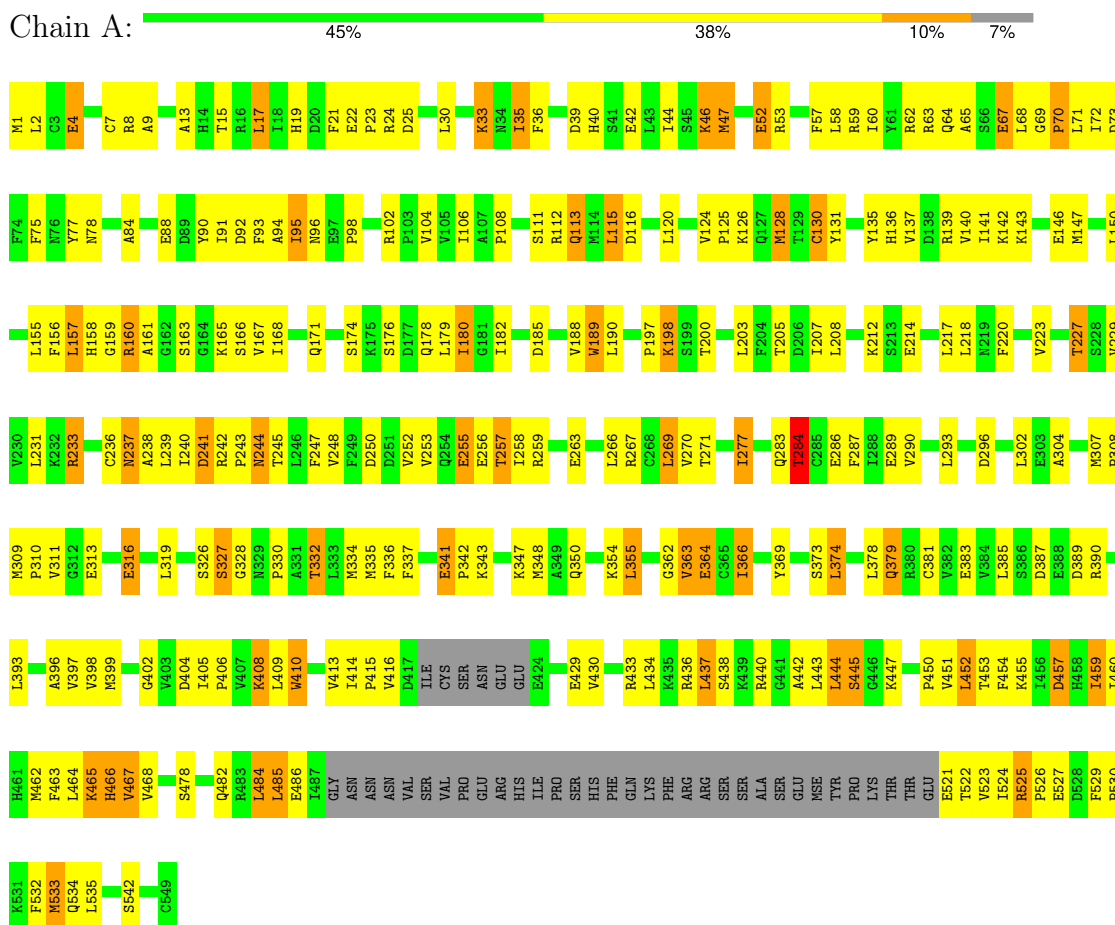


Mol	Chain	Residues	Atoms					ZeroOcc	AltConf	
			Total	C	N	O	P			
4	A	1	Total	31	10	5	13	3	0	0
4	B	1	Total	31	10	5	13	3	0	0

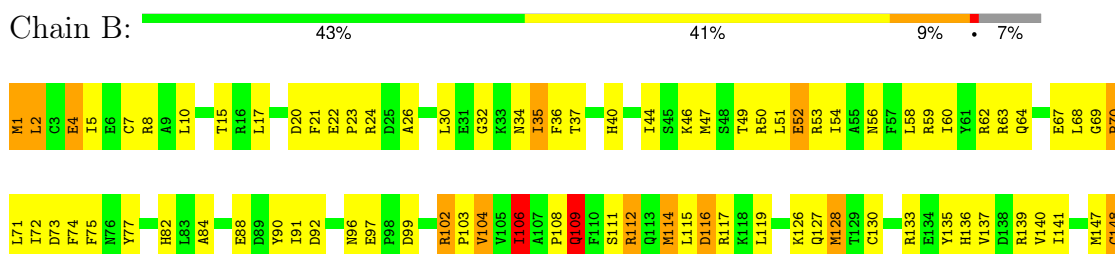
### 3 Residue-property plots

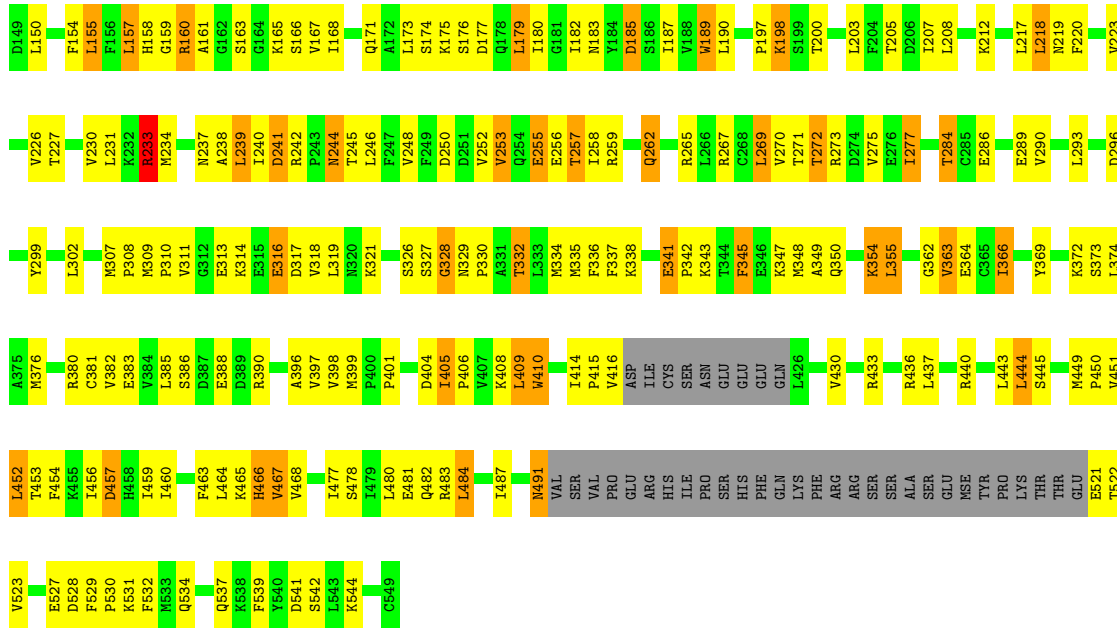
These plots are drawn for all protein, RNA, DNA and oligosaccharide chains in the entry. The first graphic for a chain summarises the proportions of the various outlier classes displayed in the second graphic. The second graphic shows the sequence view annotated by issues in geometry. Residues are color-coded according to the number of geometric quality criteria for which they contain at least one outlier: green = 0, yellow = 1, orange = 2 and red = 3 or more. Stretches of 2 or more consecutive residues without any outlier are shown as a green connector. Residues present in the sample, but not in the model, are shown in grey.

- Molecule 1: Cell death protein 4

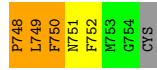
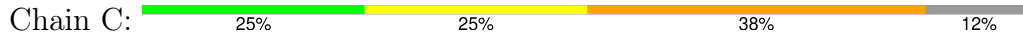


- Molecule 1: Cell death protein 4

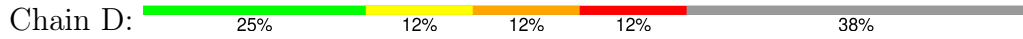




● Molecule 2: CED-3 fragment



● Molecule 2: CED-3 fragment



## 4 Data and refinement statistics

Property	Value	Source
Space group	I 4 2 2	Depositor
Cell constants a, b, c, $\alpha$ , $\beta$ , $\gamma$	181.13Å 181.13Å 202.00Å 90.00° 90.00° 90.00°	Depositor
Resolution (Å)	42.93 – 4.20 42.93 – 4.20	Depositor EDS
% Data completeness (in resolution range)	77.3 (42.93-4.20) 95.6 (42.93-4.20)	Depositor EDS
$R_{merge}$	(Not available)	Depositor
$R_{sym}$	(Not available)	Depositor
$\langle I/\sigma(I) \rangle$ <sup>1</sup>	4.34 (at 4.13Å)	Xtrriage
Refinement program	PHENIX (phenix.refine: 1.8.2_1309)	Depositor
R, $R_{free}$	0.247 , 0.300 0.268 , 0.311	Depositor DCC
$R_{free}$ test set	575 reflections (4.78%)	wwPDB-VP
Wilson B-factor (Å <sup>2</sup> )	266.1	Xtrriage
Anisotropy	0.069	Xtrriage
Bulk solvent $k_{sol}$ (e/Å <sup>3</sup> ), $B_{sol}$ (Å <sup>2</sup> )	0.28 , 257.5	EDS
L-test for twinning <sup>2</sup>	$\langle  L  \rangle = 0.52$ , $\langle L^2 \rangle = 0.35$	Xtrriage
Estimated twinning fraction	No twinning to report.	Xtrriage
$F_o, F_c$ correlation	0.89	EDS
Total number of atoms	8349	wwPDB-VP
Average B, all atoms (Å <sup>2</sup> )	272.0	wwPDB-VP

Xtrriage's analysis on translational NCS is as follows: *The largest off-origin peak in the Patterson function is 4.28% of the height of the origin peak. No significant pseudotranslation is detected.*

<sup>1</sup>Intensities estimated from amplitudes.

<sup>2</sup>Theoretical values of  $\langle |L| \rangle$ ,  $\langle L^2 \rangle$  for acentric reflections are 0.5, 0.333 respectively for untwinned datasets, and 0.375, 0.2 for perfectly twinned datasets.

## 5 Model quality [i](#)

### 5.1 Standard geometry [i](#)

Bond lengths and bond angles in the following residue types are not validated in this section: ATP, MG

The Z score for a bond length (or angle) is the number of standard deviations the observed value is removed from the expected value. A bond length (or angle) with  $|Z| > 5$  is considered an outlier worth inspection. RMSZ is the root-mean-square of all Z scores of the bond lengths (or angles).

Mol	Chain	Bond lengths		Bond angles	
		RMSZ	# Z  >5	RMSZ	# Z  >5
1	A	0.37	0/4147	0.72	0/5577
1	B	0.38	0/4153	0.76	2/5585 (0.0%)
2	C	1.01	1/58 (1.7%)	1.11	1/74 (1.4%)
2	D	0.37	0/46	0.61	0/58
All	All	0.38	1/8404 (0.0%)	0.74	3/11294 (0.0%)

All (1) bond length outliers are listed below:

Mol	Chain	Res	Type	Atoms	Z	Observed(Å)	Ideal(Å)
2	C	748	PRO	CB-CG	6.67	1.83	1.50

All (3) bond angle outliers are listed below:

Mol	Chain	Res	Type	Atoms	Z	Observed(°)	Ideal(°)
2	C	749	LEU	CA-CB-CG	6.06	129.24	115.30
1	B	484	LEU	CA-CB-CG	5.81	128.66	115.30
1	B	233	ARG	NE-CZ-NH1	5.29	122.95	120.30

There are no chirality outliers.

There are no planarity outliers.

### 5.2 Too-close contacts [i](#)

In the following table, the Non-H and H(model) columns list the number of non-hydrogen atoms and hydrogen atoms in the chain respectively. The H(added) column lists the number of hydrogen atoms added and optimized by MolProbity. The Clashes column lists the number of clashes within the asymmetric unit, whereas Symm-Clashes lists symmetry-related clashes.



Mol	Chain	Non-H	H(model)	H(added)	Clashes	Symm-Clashes
1	A	4088	0	4107	180	0
1	B	4094	0	4115	205	0
2	C	57	0	54	2	0
2	D	46	0	43	2	0
3	A	1	0	0	0	0
3	B	1	0	0	0	0
4	A	31	0	12	1	0
4	B	31	0	12	4	0
All	All	8349	0	8343	384	0

The all-atom clashscore is defined as the number of clashes found per 1000 atoms (including hydrogen atoms). The all-atom clashscore for this structure is 23.

All (384) close contacts within the same asymmetric unit are listed below, sorted by their clash magnitude.

Atom-1	Atom-2	Interatomic distance (Å)	Clash overlap (Å)
2:C:748:PRO:CB	2:C:748:PRO:CG	1.83	1.48
1:A:484:LEU:HD11	1:A:533:MSE:HG2	1.52	0.89
1:A:63:ARG:HE	1:A:240:ILE:HD11	1.41	0.84
1:B:200:THR:HG21	1:B:256:GLU:HB3	1.65	0.79
1:A:75:PHE:HB2	1:A:84:ALA:HB2	1.66	0.78
1:B:72:ILE:HG21	1:B:88:GLU:HG3	1.65	0.76
1:B:165:LYS:HG2	1:B:290:VAL:HG21	1.68	0.76
1:A:366:ILE:HD12	1:A:366:ILE:H	1.52	0.74
1:A:150:LEU:O	1:A:267:ARG:NH1	2.20	0.74
1:B:190:LEU:HD12	1:B:207:ILE:HG13	1.67	0.74
1:B:230:VAL:HG12	1:B:234:MSE:HE2	1.70	0.74
1:A:47:MSE:HB2	1:A:53:ARG:HG3	1.70	0.73
1:B:478:SER:O	1:B:482:GLN:HG2	1.89	0.72
1:A:128:MSE:HG3	1:A:167:VAL:HG22	1.72	0.71
1:B:366:ILE:HD12	1:B:366:ILE:H	1.54	0.70
1:A:200:THR:HG21	1:A:256:GLU:HB3	1.74	0.70
1:A:8:ARG:HG2	1:A:8:ARG:HH11	1.55	0.70
1:B:273:ARG:NE	4:B:602:ATP:O3G	2.22	0.70
1:A:335:MSE:HE3	1:A:364:GLU:HA	1.74	0.69
1:B:154:PHE:HE2	1:B:262:GLN:HG3	1.56	0.69
1:B:383:GLU:HG2	2:D:753:MSE:HG2	1.73	0.69
1:B:20:ASP:OD2	1:B:82:HIS:NE2	2.27	0.68
1:A:67:GLU:HG2	1:A:69:GLY:H	1.58	0.67
1:A:341:GLU:HB2	1:A:342:PRO:HD3	1.75	0.67
1:B:92:ASP:OD1	1:B:96:ASN:ND2	2.28	0.67
1:B:24:ARG:HH22	1:B:53:ARG:HH11	1.42	0.67

*Continued on next page...*

*Continued from previous page...*

Atom-1	Atom-2	Interatomic distance (Å)	Clash overlap (Å)
1:A:72:ILE:HG21	1:A:88:GLU:HG3	1.76	0.67
1:B:147:MSE:HE1	1:B:286:GLU:HG2	1.75	0.67
1:A:447:LYS:HE2	1:A:450:PRO:HD2	1.77	0.66
1:A:96:ASN:O	1:A:98:PRO:HD3	1.95	0.66
1:B:23:PRO:HG2	1:B:53:ARG:C	2.16	0.66
1:B:102:ARG:HG3	1:B:103:PRO:HD2	1.77	0.66
1:A:354:LYS:HD3	1:A:362:GLY:O	1.96	0.66
1:A:197:PRO:HD2	1:A:198:LYS:HE2	1.79	0.65
1:B:457:ASP:N	1:B:457:ASP:OD1	2.29	0.65
1:B:8:ARG:HH11	1:B:8:ARG:HG2	1.60	0.65
1:B:487:ILE:O	1:B:531:LYS:NZ	2.30	0.64
1:B:114:MSE:SE	1:B:177:ASP:HA	2.46	0.64
1:A:190:LEU:HD12	1:A:207:ILE:HG13	1.80	0.63
1:A:7:CYS:SG	1:A:62:ARG:HD3	2.38	0.63
1:B:50:ARG:HA	1:B:53:ARG:HE	1.64	0.63
1:B:386:SER:OG	1:B:388:GLU:OE1	2.16	0.63
1:B:197:PRO:HD2	1:B:198:LYS:HE2	1.81	0.63
1:B:255:GLU:HB3	1:B:277:ILE:HG22	1.80	0.63
1:A:452:LEU:HD23	1:A:452:LEU:H	1.64	0.62
1:B:385:LEU:O	1:B:390:ARG:NH2	2.32	0.62
1:A:24:ARG:HE	1:A:53:ARG:NH1	1.98	0.61
1:B:24:ARG:HH22	1:B:53:ARG:NH1	1.98	0.61
1:B:341:GLU:HB2	1:B:342:PRO:HD3	1.82	0.61
1:B:148:CYS:HB2	1:B:183:ASN:HB3	1.81	0.61
1:B:47:MSE:HB2	1:B:53:ARG:HG3	1.83	0.61
1:B:128:MSE:HG3	1:B:167:VAL:HG22	1.82	0.61
1:B:342:PRO:O	1:B:343:LYS:HB3	1.99	0.61
1:B:452:LEU:HD23	1:B:452:LEU:H	1.66	0.61
1:B:158:HIS:HE1	1:B:289:GLU:HB2	1.66	0.60
1:B:372:LYS:H	1:B:376:MSE:HE2	1.66	0.60
1:A:309:MSE:HG3	1:A:310:PRO:HD2	1.84	0.60
1:B:75:PHE:HB2	1:B:84:ALA:HB2	1.83	0.59
1:B:114:MSE:O	1:B:119:LEU:HG	2.02	0.59
1:B:414:ILE:HG21	1:B:430:VAL:HG13	1.83	0.59
1:B:109:GLN:C	1:B:111:SER:H	2.05	0.59
1:A:532:PHE:HB2	1:A:534:GLN:HG2	1.84	0.59
1:B:4:GLU:HG3	1:B:5:ILE:N	2.17	0.59
1:B:226:VAL:HG13	1:B:230:VAL:HB	1.85	0.59
1:A:47:MSE:HE2	1:A:52:GLU:HG2	1.84	0.59
1:A:326:SER:O	1:A:328:GLY:N	2.36	0.59
1:A:342:PRO:O	1:A:343:LYS:HB3	2.03	0.59

*Continued on next page...*

*Continued from previous page...*

Atom-1	Atom-2	Interatomic distance (Å)	Clash overlap (Å)
1:A:336:PHE:HE1	1:A:348:MSE:SE	2.36	0.59
1:A:464:LEU:O	1:A:468:VAL:HG22	2.03	0.59
1:B:253:VAL:HG11	1:B:380:ARG:HD3	1.84	0.59
1:B:406:PRO:HA	1:B:453:THR:HG22	1.83	0.59
1:A:165:LYS:HG2	1:A:290:VAL:HG21	1.86	0.58
1:A:463:PHE:O	1:A:467:VAL:HB	2.03	0.58
1:B:135:TYR:O	1:B:139:ARG:HG3	2.04	0.58
1:A:526:PRO:HD2	1:A:529:PHE:HD2	1.68	0.57
1:A:58:LEU:O	1:A:62:ARG:HG3	2.03	0.57
1:A:437:LEU:HB3	1:A:444:LEU:HD22	1.86	0.57
1:B:231:LEU:HA	1:B:234:MSE:HE3	1.86	0.57
1:A:135:TYR:CZ	1:A:139:ARG:HD2	2.40	0.57
1:B:112:ARG:HA	1:B:116:ASP:HB2	1.86	0.57
2:C:750:PHE:O	2:C:752:PHE:N	2.38	0.57
1:A:252:VAL:HG21	1:A:257:THR:HG21	1.87	0.56
1:B:443:LEU:HD23	1:B:460:ILE:HD11	1.86	0.56
1:A:255:GLU:O	1:A:259:ARG:HG3	2.05	0.56
1:A:364:GLU:HB2	1:A:373:SER:HB3	1.87	0.56
1:B:135:TYR:CZ	1:B:139:ARG:HD2	2.40	0.56
1:B:355:LEU:HD21	1:B:363:VAL:HB	1.87	0.56
1:A:178:GLN:O	1:A:182:ILE:HB	2.06	0.56
1:B:102:ARG:HG3	1:B:103:PRO:CD	2.35	0.56
1:A:313:GLU:O	1:A:316:GLU:HG3	2.05	0.56
1:A:67:GLU:HG2	1:A:69:GLY:N	2.20	0.56
2:D:751:ASN:O	2:D:751:ASN:ND2	2.38	0.56
1:B:4:GLU:O	1:B:8:ARG:HB2	2.06	0.56
1:B:302:LEU:HD13	1:B:319:LEU:HD11	1.88	0.55
1:B:527:GLU:N	1:B:527:GLU:OE1	2.39	0.55
1:A:415:PRO:O	1:A:416:VAL:HG23	2.07	0.55
1:B:397:VAL:HG21	1:B:468:VAL:HG21	1.89	0.55
1:A:250:ASP:HA	1:A:271:THR:OG1	2.06	0.55
1:B:250:ASP:HA	1:B:271:THR:OG1	2.07	0.55
1:A:457:ASP:OD1	1:A:457:ASP:N	2.40	0.55
1:B:108:PRO:O	1:B:109:GLN:HB2	2.06	0.55
1:A:159:GLY:N	1:A:165:LYS:HD3	2.22	0.55
1:A:269:LEU:HD22	1:A:270:VAL:H	1.72	0.55
1:A:233:ARG:HG3	1:A:233:ARG:HH11	1.72	0.54
1:A:247:PHE:HE2	1:A:266:LEU:HD22	1.73	0.54
1:B:436:ARG:O	1:B:440:ARG:HG3	2.08	0.54
1:B:47:MSE:HE3	1:B:52:GLU:HG2	1.88	0.54
1:B:273:ARG:CZ	1:B:380:ARG:HH21	2.20	0.54

*Continued on next page...*

*Continued from previous page...*

Atom-1	Atom-2	Interatomic distance (Å)	Clash overlap (Å)
1:A:334:MSE:HE3	1:A:334:MSE:HA	1.88	0.54
1:A:443:LEU:HD23	1:A:460:ILE:HD11	1.90	0.54
1:B:257:THR:HG22	1:B:258:ILE:HD12	1.89	0.54
1:B:309:MSE:HG3	1:B:310:PRO:HD2	1.88	0.54
1:B:257:THR:HG22	1:B:258:ILE:N	2.22	0.54
1:A:44:ILE:O	1:A:53:ARG:HG2	2.08	0.54
1:B:464:LEU:O	1:B:468:VAL:HG22	2.08	0.54
1:A:160:ARG:HG2	1:A:161:ALA:H	1.73	0.54
1:B:310:PRO:HA	1:B:345:PHE:HE2	1.71	0.54
1:A:247:PHE:CD2	1:A:266:LEU:HD13	2.43	0.53
1:B:233:ARG:HG3	1:B:233:ARG:HH11	1.73	0.53
1:B:24:ARG:NH2	1:B:53:ARG:HH11	2.06	0.53
1:B:158:HIS:CE1	1:B:289:GLU:HB2	2.41	0.53
1:B:166:SER:HA	1:B:271:THR:HG21	1.91	0.53
1:A:214:GLU:HG3	1:B:237:ASN:ND2	2.24	0.53
1:A:128:MSE:HG3	1:A:167:VAL:CG2	2.37	0.53
1:A:36:PHE:HE2	1:A:44:ILE:HD12	1.74	0.53
1:A:90:TYR:HE2	1:A:106:ILE:HD11	1.73	0.53
1:A:257:THR:HG22	1:A:258:ILE:N	2.23	0.53
1:B:335:MSE:HE3	1:B:364:GLU:HA	1.91	0.53
1:B:332:THR:O	1:B:336:PHE:HB2	2.08	0.52
1:B:409:LEU:HD21	1:B:530:PRO:HB3	1.92	0.52
1:B:529:PHE:N	1:B:530:PRO:HD3	2.24	0.52
1:B:165:LYS:N	4:B:602:ATP:O2B	2.42	0.52
1:B:529:PHE:HB3	1:B:532:PHE:CZ	2.45	0.52
1:A:465:LYS:HD3	1:A:466:HIS:CE1	2.44	0.52
1:A:521:GLU:C	1:A:523:VAL:H	2.13	0.52
1:B:269:LEU:HD22	1:B:270:VAL:H	1.74	0.52
1:A:393:LEU:HB2	1:A:437:LEU:HD11	1.91	0.52
1:B:233:ARG:NH1	1:B:237:ASN:HD21	2.08	0.52
1:A:283:GLN:HG2	1:A:284:THR:H	1.73	0.52
1:B:135:TYR:CE1	1:B:139:ARG:HD2	2.44	0.52
1:B:56:ASN:O	1:B:60:ILE:HB	2.10	0.52
1:B:388:GLU:HB3	1:B:433:ARG:HH21	1.74	0.52
1:A:406:PRO:HA	1:A:453:THR:HG22	1.92	0.52
1:B:22:GLU:OE2	1:B:24:ARG:NH1	2.43	0.52
1:B:109:GLN:C	1:B:111:SER:N	2.62	0.52
1:A:33:LYS:HD3	1:A:70:PRO:HG3	1.91	0.51
1:B:167:VAL:O	1:B:171:GLN:HG3	2.11	0.51
1:B:354:LYS:HD3	1:B:362:GLY:O	2.10	0.51
1:A:4:GLU:OE2	1:A:267:ARG:NH2	2.42	0.51

*Continued on next page...*

*Continued from previous page...*

Atom-1	Atom-2	Interatomic distance (Å)	Clash overlap (Å)
1:B:334:MSE:HE2	1:B:338:LYS:CD	2.41	0.51
1:A:242:ARG:HB3	1:A:245:THR:OG1	2.11	0.51
1:A:436:ARG:O	1:A:440:ARG:HG3	2.09	0.51
1:A:17:LEU:HD23	1:A:21:PHE:CD2	2.45	0.51
1:B:154:PHE:CE2	1:B:262:GLN:HG3	2.42	0.51
1:B:189:TRP:CE3	1:B:248:VAL:HG11	2.46	0.51
1:B:521:GLU:C	1:B:523:VAL:H	2.13	0.51
1:A:135:TYR:O	1:A:139:ARG:HG3	2.10	0.51
1:B:242:ARG:HB3	1:B:245:THR:OG1	2.11	0.51
1:B:313:GLU:O	1:B:316:GLU:HG3	2.10	0.51
1:B:173:LEU:HD23	1:B:179:LEU:HD23	1.92	0.50
1:B:491:ASN:N	1:B:491:ASN:OD1	2.44	0.50
1:A:430:VAL:O	1:A:434:LEU:HG	2.12	0.50
1:B:166:SER:OG	1:B:250:ASP:OD1	2.28	0.50
1:A:355:LEU:HD21	1:A:363:VAL:HB	1.93	0.50
1:B:35:ILE:HD12	1:B:70:PRO:HG2	1.93	0.50
1:A:160:ARG:HB3	1:A:163:SER:HB3	1.93	0.50
1:A:341:GLU:CB	1:A:342:PRO:HD3	2.41	0.50
1:A:25:ASP:HB3	1:A:78:ASN:ND2	2.27	0.50
1:A:137:VAL:O	1:A:141:ILE:HG13	2.12	0.50
1:A:212:LYS:HA	1:A:212:LYS:HE2	1.94	0.50
1:B:415:PRO:O	1:B:416:VAL:HG23	2.12	0.50
1:B:23:PRO:HG2	1:B:53:ARG:O	2.11	0.50
1:B:136:HIS:O	1:B:140:VAL:HG23	2.12	0.50
1:B:364:GLU:HB2	1:B:373:SER:HB3	1.94	0.50
1:B:293:LEU:HG	1:B:330:PRO:HD3	1.94	0.50
1:B:326:SER:O	1:B:328:GLY:N	2.45	0.49
1:B:437:LEU:HB3	1:B:444:LEU:HD22	1.93	0.49
1:B:449:MSE:HE3	1:B:450:PRO:HA	1.92	0.49
1:A:30:LEU:HD21	1:A:70:PRO:O	2.11	0.49
1:A:120:LEU:HD13	1:B:265:ARG:HB2	1.94	0.49
1:A:156:PHE:HB2	1:A:287:PHE:CD2	2.47	0.49
1:A:293:LEU:HG	1:A:330:PRO:HD3	1.94	0.49
1:B:1:MSE:HA	1:B:62:ARG:O	2.12	0.49
1:A:19:HIS:HD2	1:B:1:MSE:SE	2.45	0.49
1:B:318:VAL:HG11	1:B:349:ALA:HB2	1.94	0.49
1:A:102:ARG:HG2	1:A:182:ILE:CG2	2.42	0.49
1:A:136:HIS:O	1:A:140:VAL:HG23	2.12	0.49
1:A:91:ILE:O	1:A:95:ILE:HG13	2.12	0.49
1:A:255:GLU:HB3	1:A:277:ILE:HG22	1.94	0.49
1:B:341:GLU:CB	1:B:342:PRO:HD3	2.43	0.49

*Continued on next page...*

*Continued from previous page...*

Atom-1	Atom-2	Interatomic distance (Å)	Clash overlap (Å)
1:A:147:MSE:O	1:A:150:LEU:HB2	2.12	0.49
1:A:478:SER:O	1:A:482:GLN:HG2	2.12	0.48
1:B:137:VAL:O	1:B:141:ILE:HG13	2.13	0.48
1:B:255:GLU:O	1:B:259:ARG:HG3	2.13	0.48
1:B:30:LEU:HB3	1:B:36:PHE:CD1	2.48	0.48
1:A:158:HIS:NE2	1:A:289:GLU:HB2	2.29	0.48
1:A:332:THR:O	1:A:336:PHE:HB2	2.13	0.48
1:A:402:GLY:HA2	1:A:455:LYS:HD2	1.96	0.48
1:A:527:GLU:OE1	1:A:527:GLU:N	2.44	0.48
1:A:163:SER:O	1:A:330:PRO:HG2	2.13	0.48
1:A:462:MSE:HE3	1:A:462:MSE:HB2	1.69	0.48
1:B:410:TRP:CZ3	1:B:454:PHE:HB2	2.49	0.48
1:B:343:LYS:O	1:B:343:LYS:HG2	2.14	0.48
1:A:233:ARG:HA	1:A:236:CYS:SG	2.54	0.47
1:A:247:PHE:CE2	1:A:266:LEU:HD13	2.49	0.47
1:B:44:ILE:O	1:B:53:ARG:HG2	2.13	0.47
1:A:205:THR:HA	1:A:231:LEU:HD11	1.94	0.47
1:B:88:GLU:O	1:B:91:ILE:HG22	2.14	0.47
1:B:2:LEU:HB2	1:B:7:CYS:SG	2.54	0.47
1:B:111:SER:O	1:B:115:LEU:HB3	2.15	0.47
1:B:218:LEU:HG	1:B:219:ASN:N	2.30	0.47
1:A:525:ARG:HD3	1:A:535:LEU:HD13	1.95	0.47
1:B:273:ARG:NH2	1:B:380:ARG:HH21	2.12	0.47
1:B:537:GLN:O	1:B:541:ASP:N	2.44	0.47
1:A:142:LYS:O	1:A:146:GLU:HG3	2.14	0.47
1:A:529:PHE:N	1:A:530:PRO:HD3	2.30	0.47
1:B:32:GLY:C	1:B:34:ASN:H	2.18	0.47
1:B:106:ILE:HG23	1:B:106:ILE:O	2.14	0.47
1:B:463:PHE:O	1:B:467:VAL:HB	2.15	0.47
1:A:397:VAL:HG22	1:A:464:LEU:HB3	1.96	0.47
1:A:444:LEU:HD12	1:A:444:LEU:HA	1.76	0.47
1:A:327:SER:HB2	1:A:459:ILE:HG13	1.97	0.47
1:A:116:ASP:OD1	1:A:116:ASP:N	2.48	0.47
1:B:133:ARG:O	1:B:137:VAL:HG23	2.15	0.47
1:B:177:ASP:O	1:B:182:ILE:HD13	2.14	0.47
1:A:46:LYS:H	1:A:46:LYS:HG3	1.54	0.46
1:A:233:ARG:HH11	1:A:233:ARG:CG	2.29	0.46
1:B:59:ARG:HH11	1:B:63:ARG:HH22	1.63	0.46
1:B:248:VAL:HG22	1:B:269:LEU:HD12	1.98	0.46
1:A:465:LYS:HD3	1:A:466:HIS:HE1	1.80	0.46
1:B:40:HIS:HD2	1:B:60:ILE:HG23	1.80	0.46

*Continued on next page...*

*Continued from previous page...*

Atom-1	Atom-2	Interatomic distance (Å)	Clash overlap (Å)
1:B:155:LEU:HB3	1:B:269:LEU:HD23	1.96	0.46
1:A:527:GLU:C	1:A:530:PRO:HD3	2.36	0.46
1:B:158:HIS:CD2	1:B:275:VAL:HG13	2.50	0.46
1:B:49:THR:HG22	1:B:50:ARG:N	2.30	0.46
1:B:157:LEU:HD11	1:B:168:ILE:HG22	1.97	0.46
1:A:167:VAL:HG11	4:A:602:ATP:C5	2.50	0.46
1:A:269:LEU:HD22	1:A:270:VAL:N	2.31	0.46
1:A:397:VAL:O	1:A:399:MSE:N	2.47	0.46
1:A:102:ARG:HG2	1:A:182:ILE:HG22	1.98	0.46
1:B:88:GLU:HA	1:B:91:ILE:HG22	1.97	0.46
1:B:405:ILE:HA	1:B:406:PRO:HD3	1.80	0.46
1:B:481:GLU:O	1:B:484:LEU:HG	2.15	0.46
1:A:21:PHE:CG	1:A:22:GLU:N	2.84	0.46
1:B:329:ASN:HA	1:B:330:PRO:HD2	1.77	0.46
1:A:252:VAL:CG2	1:A:257:THR:HG21	2.45	0.45
1:A:307:MSE:HA	1:A:308:PRO:HD3	1.80	0.45
1:B:159:GLY:N	1:B:165:LYS:HD3	2.32	0.45
1:B:318:VAL:O	1:B:321:LYS:HB3	2.17	0.45
1:A:444:LEU:HB3	1:A:445:SER:H	1.57	0.45
1:B:163:SER:O	1:B:330:PRO:HG2	2.17	0.45
1:B:233:ARG:HH11	1:B:233:ARG:CG	2.29	0.45
1:A:25:ASP:HB3	1:A:78:ASN:HD21	1.81	0.45
1:A:167:VAL:O	1:A:171:GLN:HG3	2.16	0.45
1:B:252:VAL:CG2	1:B:257:THR:HG21	2.47	0.45
1:B:35:ILE:O	1:B:64:GLN:HB2	2.17	0.45
1:A:111:SER:O	1:A:113:GLN:N	2.50	0.45
1:A:459:ILE:HG13	1:A:459:ILE:H	1.37	0.45
1:B:128:MSE:HG3	1:B:167:VAL:CG2	2.47	0.45
1:A:7:CYS:HB3	1:A:243:PRO:HG3	1.99	0.44
1:A:466:HIS:ND1	1:A:466:HIS:N	2.65	0.44
1:B:8:ARG:HD3	1:B:90:TYR:OH	2.17	0.44
1:B:160:ARG:HG2	1:B:161:ALA:H	1.82	0.44
1:B:189:TRP:CD1	1:B:189:TRP:C	2.91	0.44
1:B:237:ASN:C	1:B:239:LEU:H	2.21	0.44
1:A:35:ILE:O	1:A:64:GLN:HB3	2.17	0.44
1:A:90:TYR:CE2	1:A:106:ILE:HD11	2.51	0.44
1:A:157:LEU:HD11	1:A:168:ILE:HG22	1.99	0.44
1:A:166:SER:OG	1:A:250:ASP:OD1	2.36	0.44
1:B:10:LEU:HD22	1:B:58:LEU:HD21	1.99	0.44
1:A:44:ILE:HD11	1:A:60:ILE:HD12	2.00	0.44
1:A:130:CYS:O	1:A:304:ALA:HB1	2.17	0.44

*Continued on next page...*

*Continued from previous page...*

Atom-1	Atom-2	Interatomic distance (Å)	Clash overlap (Å)
1:B:190:LEU:CD1	1:B:207:ILE:HG13	2.44	0.44
1:B:150:LEU:O	1:B:267:ARG:NH1	2.51	0.44
1:A:124:VAL:HA	1:A:125:PRO:HD3	1.75	0.44
1:A:78:ASN:HA	1:B:37:THR:HG21	2.00	0.44
1:A:259:ARG:O	1:A:263:GLU:HG3	2.17	0.44
1:A:347:LYS:O	1:A:347:LYS:HD3	2.17	0.44
1:A:374:LEU:HD13	1:A:378:LEU:HG	1.99	0.44
1:B:314:LYS:HA	1:B:317:ASP:HB2	1.99	0.44
1:B:167:VAL:HG11	4:B:602:ATP:C6	2.53	0.43
1:A:23:PRO:HG2	1:A:53:ARG:C	2.38	0.43
1:A:44:ILE:HD13	1:A:57:PHE:HA	2.01	0.43
1:A:139:ARG:NH2	1:A:143:LYS:HE3	2.33	0.43
1:A:189:TRP:CE3	1:A:248:VAL:HG11	2.53	0.43
1:A:379:GLN:O	1:A:383:GLU:HG3	2.18	0.43
1:B:49:THR:HG22	1:B:50:ARG:H	1.83	0.43
1:A:406:PRO:HD3	1:A:524:ILE:HD11	1.99	0.43
1:B:401:PRO:HA	1:B:456:ILE:HG23	2.00	0.43
1:A:521:GLU:O	1:A:523:VAL:N	2.51	0.43
1:B:185:ASP:N	1:B:244:ASN:O	2.44	0.43
1:B:187:ILE:HD13	1:B:246:LEU:HB3	2.00	0.43
1:B:307:MSE:HA	1:B:308:PRO:HD3	1.77	0.43
1:B:334:MSE:HE3	1:B:337:PHE:HB2	2.01	0.43
1:A:8:ARG:HG2	1:A:8:ARG:NH1	2.30	0.43
1:A:302:LEU:HD13	1:A:319:LEU:HD11	2.00	0.43
1:B:444:LEU:HD12	1:B:444:LEU:HA	1.76	0.43
1:B:484:LEU:HD13	1:B:531:LYS:O	2.18	0.43
1:A:343:LYS:O	1:A:343:LYS:HG2	2.19	0.43
1:A:240:ILE:C	1:A:242:ARG:H	2.22	0.43
1:B:269:LEU:HD22	1:B:270:VAL:N	2.34	0.43
1:A:437:LEU:HD22	1:A:437:LEU:HA	1.85	0.43
1:B:477:ILE:HG21	1:B:544:LYS:HE2	2.01	0.43
1:A:233:ARG:NH1	1:A:237:ASN:HD21	2.17	0.42
1:A:429:GLU:OE2	1:A:433:ARG:NH1	2.50	0.42
1:B:163:SER:C	1:B:330:PRO:HG2	2.39	0.42
1:B:521:GLU:O	1:B:523:VAL:N	2.51	0.42
1:B:40:HIS:O	1:B:44:ILE:HG13	2.19	0.42
1:B:212:LYS:HE2	1:B:212:LYS:HA	2.00	0.42
1:B:332:THR:HG23	1:B:374:LEU:HB2	2.02	0.42
1:B:532:PHE:C	1:B:534:GLN:H	2.23	0.42
1:A:115:LEU:HD21	1:A:180:ILE:HB	2.02	0.42
1:A:307:MSE:SE	1:A:308:PRO:HD2	2.69	0.42

*Continued on next page...*



*Continued from previous page...*

Atom-1	Atom-2	Interatomic distance (Å)	Clash overlap (Å)
1:B:47:MSE:HB3	1:B:52:GLU:HB3	2.01	0.42
1:B:59:ARG:HH11	1:B:63:ARG:NH2	2.17	0.42
1:B:460:ILE:HD12	1:B:460:ILE:HA	1.76	0.42
1:A:438:SER:O	1:A:442:ALA:HA	2.18	0.42
1:B:21:PHE:CG	1:B:22:GLU:N	2.87	0.42
1:B:388:GLU:CD	1:B:388:GLU:H	2.23	0.42
1:B:397:VAL:O	1:B:399:MSE:N	2.51	0.42
1:A:408:LYS:HD2	1:A:408:LYS:HA	1.75	0.42
1:B:239:LEU:HD22	1:B:242:ARG:HB2	2.00	0.42
1:B:252:VAL:HG21	1:B:257:THR:HG21	2.02	0.42
1:A:35:ILE:HG12	1:A:65:ALA:HA	2.02	0.42
1:A:397:VAL:C	1:A:399:MSE:H	2.22	0.42
1:A:13:ALA:O	1:A:17:LEU:HD12	2.20	0.42
1:A:47:MSE:HB2	1:A:53:ARG:CG	2.45	0.42
1:A:347:LYS:HA	1:A:350:GLN:HB2	2.01	0.42
1:B:26:ALA:HA	1:B:74:PHE:CE1	2.55	0.42
1:A:410:TRP:CZ3	1:A:454:PHE:HB2	2.55	0.42
1:B:50:ARG:CA	1:B:53:ARG:HH21	2.33	0.42
1:A:163:SER:C	1:A:330:PRO:HG2	2.40	0.42
1:A:334:MSE:HE1	1:A:337:PHE:HD2	1.84	0.42
1:A:532:PHE:C	1:A:534:GLN:H	2.23	0.42
1:B:69:GLY:O	1:B:71:LEU:N	2.52	0.42
1:B:336:PHE:HE1	1:B:348:MSE:SE	2.53	0.41
1:B:343:LYS:HB3	1:B:343:LYS:HE3	1.86	0.41
1:A:385:LEU:O	1:A:390:ARG:NH2	2.53	0.41
1:B:205:THR:HA	1:B:231:LEU:HD11	2.01	0.41
1:A:255:GLU:CB	1:A:277:ILE:HG22	2.50	0.41
1:B:299:TYR:HA	1:B:302:LEU:HD12	2.02	0.41
1:A:111:SER:C	1:A:113:GLN:H	2.23	0.41
1:A:188:VAL:HB	1:A:247:PHE:CD1	2.55	0.41
1:A:240:ILE:HG13	1:A:241:ASP:OD1	2.20	0.41
1:B:21:PHE:CD2	1:B:54:ILE:HG12	2.56	0.41
1:B:332:THR:HA	1:B:335:MSE:SE	2.71	0.41
1:B:49:THR:HB	1:B:52:GLU:OE1	2.20	0.41
1:B:397:VAL:HG22	1:B:464:LEU:HB3	2.03	0.41
1:B:527:GLU:C	1:B:530:PRO:HD3	2.41	0.41
1:A:40:HIS:O	1:A:44:ILE:HG13	2.20	0.41
1:A:59:ARG:HH11	1:A:63:ARG:NH1	2.18	0.41
1:B:72:ILE:C	1:B:74:PHE:H	2.24	0.41
1:B:272:THR:OG1	1:B:273:ARG:N	2.53	0.41
1:B:310:PRO:HA	1:B:345:PHE:CE2	2.53	0.41

*Continued on next page...*

Continued from previous page...

Atom-1	Atom-2	Interatomic distance (Å)	Clash overlap (Å)
1:B:334:MSE:HE2	1:B:338:LYS:HD2	2.02	0.41
1:A:93:PHE:CE2	1:A:104:VAL:HG11	2.55	0.41
1:B:147:MSE:O	1:B:150:LEU:HB2	2.20	0.41
1:B:308:PRO:HG2	1:B:343:LYS:HD3	2.03	0.41
1:B:309:MSE:HE2	1:B:309:MSE:HB2	1.92	0.41
1:B:374:LEU:O	1:B:374:LEU:HD13	2.21	0.41
1:B:483:ARG:O	1:B:487:ILE:HG13	2.20	0.41
1:A:9:ALA:HB2	1:A:90:TYR:CD1	2.56	0.41
1:A:39:ASP:HA	1:A:42:GLU:HB2	2.02	0.41
1:A:176:SER:OG	1:A:178:GLN:HB2	2.21	0.41
1:A:243:PRO:O	1:A:244:ASN:C	2.59	0.41
1:B:21:PHE:CE2	1:B:23:PRO:HG3	2.56	0.41
1:B:165:LYS:H	1:B:165:LYS:HG3	1.66	0.41
1:B:299:TYR:CZ	1:B:319:LEU:HD22	2.56	0.41
1:B:347:LYS:O	1:B:350:GLN:HB2	2.20	0.41
1:B:414:ILE:HA	1:B:415:PRO:HD3	1.89	0.41
1:B:466:HIS:ND1	1:B:466:HIS:N	2.69	0.41
1:A:165:LYS:HG2	1:A:290:VAL:CG2	2.49	0.41
1:A:413:VAL:HG23	1:A:414:ILE:HD12	2.02	0.41
1:A:385:LEU:HD22	1:A:389:ASP:HB3	2.03	0.40
1:B:334:MSE:HE2	1:B:338:LYS:HD3	2.01	0.40
1:A:248:VAL:HG22	1:A:269:LEU:HD12	2.04	0.40
1:A:71:LEU:HD13	1:A:71:LEU:O	2.21	0.40
1:A:92:ASP:C	1:A:94:ALA:H	2.24	0.40
1:A:227:THR:HB	1:A:229:VAL:HG12	2.03	0.40
1:A:24:ARG:HE	1:A:53:ARG:HH11	1.68	0.40
1:A:36:PHE:CE2	1:A:44:ILE:HD12	2.54	0.40
1:A:42:GLU:OE1	1:A:46:LYS:HD3	2.21	0.40
1:B:237:ASN:O	1:B:240:ILE:HG23	2.21	0.40
1:B:330:PRO:HB3	4:B:602:ATP:N3	2.36	0.40

There are no symmetry-related clashes.

## 5.3 Torsion angles [i](#)

### 5.3.1 Protein backbone [i](#)

In the following table, the Percentiles column shows the percent Ramachandran outliers of the chain as a percentile score with respect to all X-ray entries followed by that with respect to entries of similar resolution.

The Analysed column shows the number of residues for which the backbone conformation was analysed, and the total number of residues.

Mol	Chain	Analysed	Favoured	Allowed	Outliers	Percentiles	
1	A	504/549 (92%)	405 (80%)	74 (15%)	25 (5%)	2	23
1	B	505/549 (92%)	405 (80%)	73 (14%)	27 (5%)	2	22
2	C	5/8 (62%)	2 (40%)	1 (20%)	2 (40%)	0	0
2	D	3/8 (38%)	1 (33%)	0	2 (67%)	0	0
All	All	1017/1114 (91%)	813 (80%)	148 (15%)	56 (6%)	2	22

All (56) Ramachandran outliers are listed below:

Mol	Chain	Res	Type
1	A	327	SER
1	A	341	GLU
1	A	398	VAL
1	A	445	SER
1	A	486	GLU
1	B	109	GLN
1	B	127	GLN
1	B	327	SER
1	B	341	GLU
1	B	398	VAL
1	B	445	SER
1	A	112	ARG
1	A	208	LEU
1	A	238	ALA
1	A	244	ASN
1	A	396	ALA
1	A	465	LYS
1	A	522	THR
2	C	750	PHE
2	C	751	ASN
1	B	244	ASN
1	B	396	ALA
1	B	465	LYS
1	B	522	THR
1	A	2	LEU
1	A	73	ASP
1	A	160	ARG
1	A	284	THR
1	B	2	LEU
1	B	104	VAL

*Continued on next page...*

*Continued from previous page...*

Mol	Chain	Res	Type
1	B	160	ARG
1	B	208	LEU
1	B	238	ALA
1	B	284	THR
2	D	751	ASN
1	A	33	LYS
1	B	73	ASP
1	B	176	SER
1	A	237	ASN
1	A	484	LEU
1	A	485	LEU
1	B	35	ILE
1	B	241	ASP
1	B	257	THR
1	B	328	GLY
1	B	354	LYS
2	D	750	PHE
1	A	257	THR
1	B	102	ARG
1	A	70	PRO
1	A	108	PRO
1	B	311	VAL
1	A	311	VAL
1	B	70	PRO
1	B	106	ILE
1	A	35	ILE

### 5.3.2 Protein sidechains [i](#)

In the following table, the Percentiles column shows the percent sidechain outliers of the chain as a percentile score with respect to all X-ray entries followed by that with respect to entries of similar resolution.

The Analysed column shows the number of residues for which the sidechain conformation was analysed, and the total number of residues.

Mol	Chain	Analysed	Rotameric	Outliers	Percentiles	
1	A	462/483 (96%)	393 (85%)	69 (15%)	3	17
1	B	464/483 (96%)	389 (84%)	75 (16%)	2	15
2	C	6/6 (100%)	5 (83%)	1 (17%)	2	14
2	D	5/6 (83%)	3 (60%)	2 (40%)	0	0

*Continued on next page...*

*Continued from previous page...*

Mol	Chain	Analysed	Rotameric	Outliers	Percentiles
All	All	937/978 (96%)	790 (84%)	147 (16%)	2 16

All (147) residues with a non-rotameric sidechain are listed below:

Mol	Chain	Res	Type
1	A	1	MSE
1	A	4	GLU
1	A	15	THR
1	A	17	LEU
1	A	46	LYS
1	A	47	MSE
1	A	52	GLU
1	A	67	GLU
1	A	68	LEU
1	A	77	TYR
1	A	95	ILE
1	A	113	GLN
1	A	115	LEU
1	A	126	LYS
1	A	128	MSE
1	A	130	CYS
1	A	131	TYR
1	A	155	LEU
1	A	157	LEU
1	A	174	SER
1	A	179	LEU
1	A	180	ILE
1	A	185	ASP
1	A	189	TRP
1	A	198	LYS
1	A	203	LEU
1	A	217	LEU
1	A	218	LEU
1	A	220	PHE
1	A	223	VAL
1	A	227	THR
1	A	233	ARG
1	A	239	LEU
1	A	241	ASP
1	A	253	VAL
1	A	255	GLU
1	A	269	LEU

*Continued on next page...*

*Continued from previous page...*

<b>Mol</b>	<b>Chain</b>	<b>Res</b>	<b>Type</b>
1	A	277	ILE
1	A	284	THR
1	A	286	GLU
1	A	296	ASP
1	A	316	GLU
1	A	332	THR
1	A	355	LEU
1	A	363	VAL
1	A	364	GLU
1	A	366	ILE
1	A	369	TYR
1	A	374	LEU
1	A	379	GLN
1	A	381	CYS
1	A	387	ASP
1	A	404	ASP
1	A	405	ILE
1	A	408	LYS
1	A	409	LEU
1	A	410	TRP
1	A	437	LEU
1	A	444	LEU
1	A	451	VAL
1	A	452	LEU
1	A	457	ASP
1	A	459	ILE
1	A	466	HIS
1	A	467	VAL
1	A	485	LEU
1	A	525	ARG
1	A	533	MSE
1	A	542	SER
2	C	749	LEU
1	B	1	MSE
1	B	4	GLU
1	B	15	THR
1	B	17	LEU
1	B	46	LYS
1	B	51	LEU
1	B	52	GLU
1	B	67	GLU
1	B	68	LEU

*Continued on next page...*

*Continued from previous page...*

<b>Mol</b>	<b>Chain</b>	<b>Res</b>	<b>Type</b>
1	B	77	TYR
1	B	97	GLU
1	B	99	ASP
1	B	104	VAL
1	B	106	ILE
1	B	109	GLN
1	B	112	ARG
1	B	114	MSE
1	B	116	ASP
1	B	117	ARG
1	B	126	LYS
1	B	128	MSE
1	B	130	CYS
1	B	148	CYS
1	B	155	LEU
1	B	157	LEU
1	B	174	SER
1	B	175	LYS
1	B	179	LEU
1	B	180	ILE
1	B	185	ASP
1	B	189	TRP
1	B	198	LYS
1	B	203	LEU
1	B	217	LEU
1	B	218	LEU
1	B	220	PHE
1	B	223	VAL
1	B	227	THR
1	B	233	ARG
1	B	239	LEU
1	B	241	ASP
1	B	253	VAL
1	B	255	GLU
1	B	262	GLN
1	B	269	LEU
1	B	272	THR
1	B	277	ILE
1	B	284	THR
1	B	296	ASP
1	B	316	GLU
1	B	332	THR

*Continued on next page...*

*Continued from previous page...*

Mol	Chain	Res	Type
1	B	345	PHE
1	B	355	LEU
1	B	363	VAL
1	B	366	ILE
1	B	369	TYR
1	B	381	CYS
1	B	382	VAL
1	B	404	ASP
1	B	405	ILE
1	B	408	LYS
1	B	409	LEU
1	B	410	TRP
1	B	444	LEU
1	B	451	VAL
1	B	452	LEU
1	B	457	ASP
1	B	459	ILE
1	B	466	HIS
1	B	467	VAL
1	B	480	LEU
1	B	491	ASN
1	B	528	ASP
1	B	539	PHE
1	B	542	SER
2	D	751	ASN
2	D	753	MSE

Sometimes sidechains can be flipped to improve hydrogen bonding and reduce clashes. All (3) such sidechains are listed below:

Mol	Chain	Res	Type
1	B	80	GLN
1	B	96	ASN
1	B	237	ASN

### 5.3.3 RNA

There are no RNA molecules in this entry.



## 5.4 Non-standard residues in protein, DNA, RNA chains [i](#)

There are no non-standard protein/DNA/RNA residues in this entry.

## 5.5 Carbohydrates [i](#)

There are no monosaccharides in this entry.

## 5.6 Ligand geometry [i](#)

Of 4 ligands modelled in this entry, 2 are monoatomic - leaving 2 for Mogul analysis.

In the following table, the Counts columns list the number of bonds (or angles) for which Mogul statistics could be retrieved, the number of bonds (or angles) that are observed in the model and the number of bonds (or angles) that are defined in the Chemical Component Dictionary. The Link column lists molecule types, if any, to which the group is linked. The Z score for a bond length (or angle) is the number of standard deviations the observed value is removed from the expected value. A bond length (or angle) with  $|Z| > 2$  is considered an outlier worth inspection. RMSZ is the root-mean-square of all Z scores of the bond lengths (or angles).

Mol	Type	Chain	Res	Link	Bond lengths			Bond angles		
					Counts	RMSZ	# Z  > 2	Counts	RMSZ	# Z  > 2
4	ATP	A	602	3	28,33,33	1.08	4 (14%)	34,52,52	1.18	2 (5%)
4	ATP	B	602	3	28,33,33	0.96	2 (7%)	34,52,52	1.33	3 (8%)

In the following table, the Chirals column lists the number of chiral outliers, the number of chiral centers analysed, the number of these observed in the model and the number defined in the Chemical Component Dictionary. Similar counts are reported in the Torsion and Rings columns. '-' means no outliers of that kind were identified.

Mol	Type	Chain	Res	Link	Chirals	Torsions	Rings
4	ATP	A	602	3	-	0/18/38/38	0/3/3/3
4	ATP	B	602	3	-	1/18/38/38	0/3/3/3

All (6) bond length outliers are listed below:

Mol	Chain	Res	Type	Atoms	Z	Observed(Å)	Ideal(Å)
4	A	602	ATP	PB-O3A	2.44	1.62	1.59
4	B	602	ATP	O4'-C1'	2.30	1.43	1.40
4	A	602	ATP	O4'-C1'	2.29	1.43	1.40
4	A	602	ATP	PA-O3A	2.13	1.61	1.59
4	B	602	ATP	PB-O3B	2.05	1.61	1.59
4	A	602	ATP	C2-N3	2.00	1.35	1.32

All (5) bond angle outliers are listed below:

Mol	Chain	Res	Type	Atoms	Z	Observed(°)	Ideal(°)
4	B	602	ATP	N3-C2-N1	-3.93	123.34	128.67
4	B	602	ATP	O4'-C1'-N9	3.61	113.53	108.75
4	A	602	ATP	N3-C2-N1	-3.42	124.03	128.67
4	A	602	ATP	C4-C5-N7	-3.15	106.01	109.34
4	B	602	ATP	C4-C5-N7	-2.24	106.97	109.34

There are no chirality outliers.

All (1) torsion outliers are listed below:

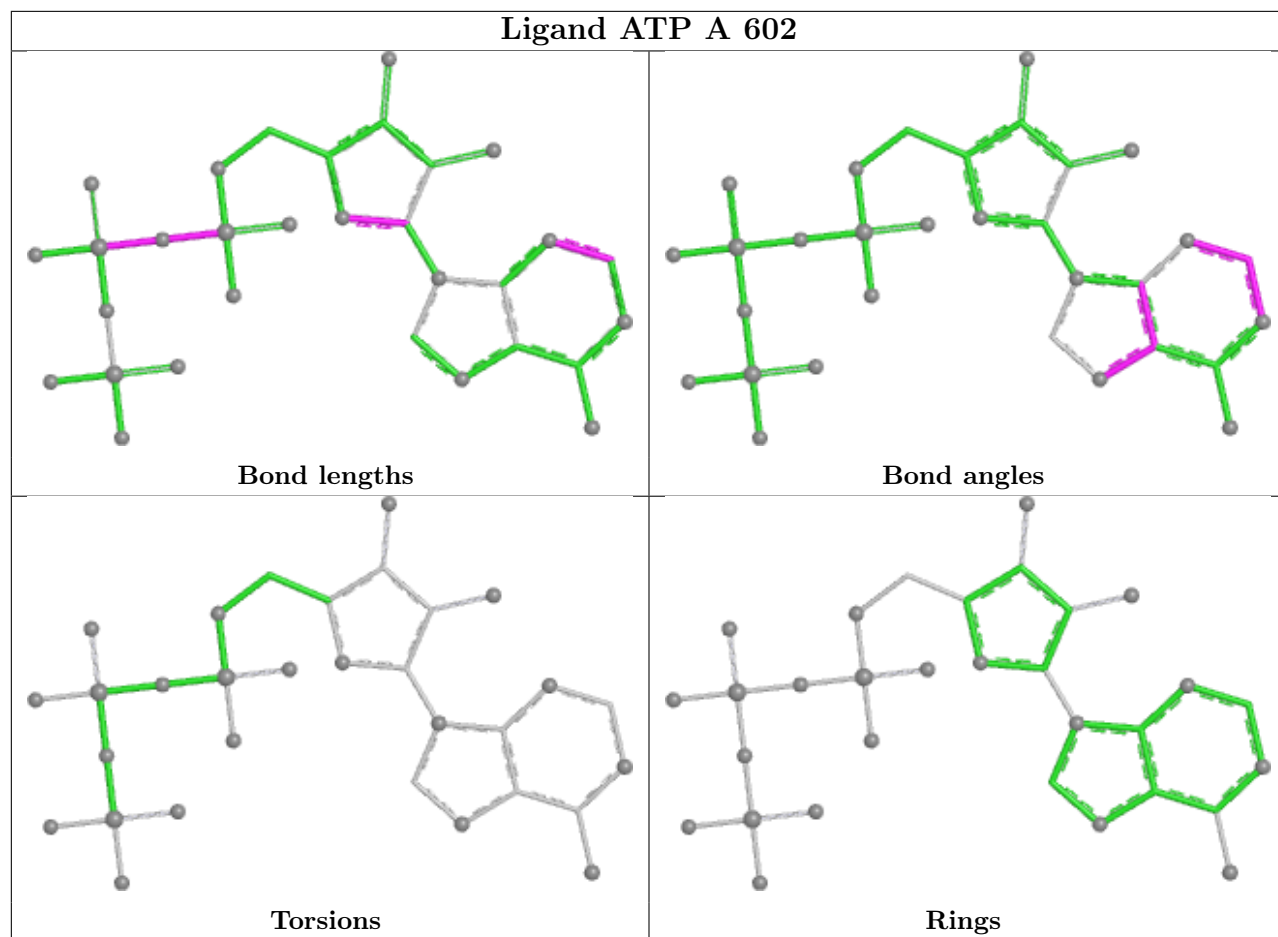
Mol	Chain	Res	Type	Atoms
4	B	602	ATP	PG-O3B-PB-O2B

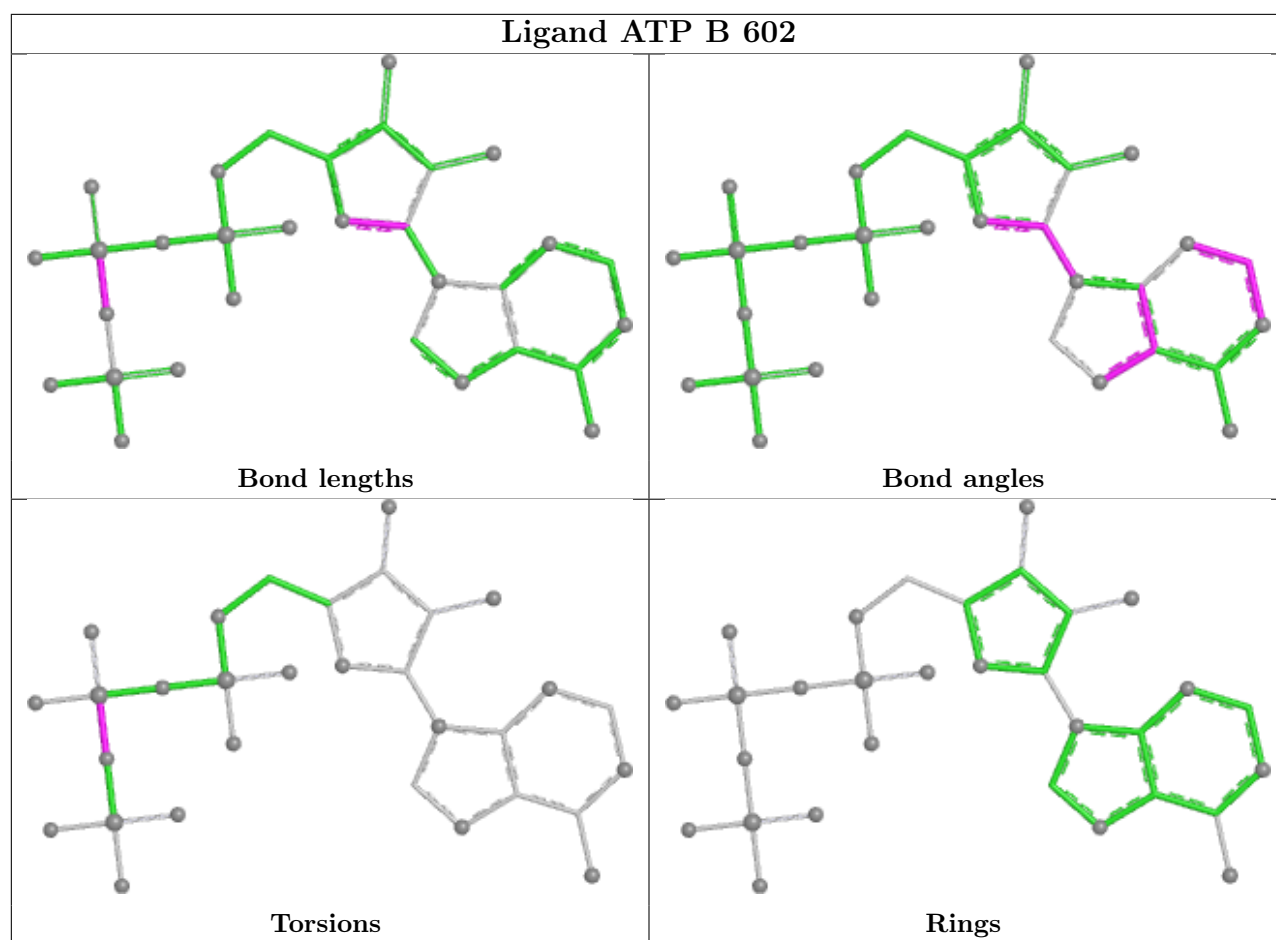
There are no ring outliers.

2 monomers are involved in 5 short contacts:

Mol	Chain	Res	Type	Clashes	Symm-Clashes
4	A	602	ATP	1	0
4	B	602	ATP	4	0

The following is a two-dimensional graphical depiction of Mogul quality analysis of bond lengths, bond angles, torsion angles, and ring geometry for all instances of the Ligand of Interest. In addition, ligands with molecular weight > 250 and outliers as shown on the validation Tables will also be included. For torsion angles, if less than 5% of the Mogul distribution of torsion angles is within 10 degrees of the torsion angle in question, then that torsion angle is considered an outlier. Any bond that is central to one or more torsion angles identified as an outlier by Mogul will be highlighted in the graph. For rings, the root-mean-square deviation (RMSD) between the ring in question and similar rings identified by Mogul is calculated over all ring torsion angles. If the average RMSD is greater than 60 degrees and the minimal RMSD between the ring in question and any Mogul-identified rings is also greater than 60 degrees, then that ring is considered an outlier. The outliers are highlighted in purple. The color gray indicates Mogul did not find sufficient equivalents in the CSD to analyse the geometry.





## 5.7 Other polymers [i](#)

There are no such residues in this entry.

## 5.8 Polymer linkage issues [i](#)

There are no chain breaks in this entry.

## 6 Fit of model and data [i](#)

### 6.1 Protein, DNA and RNA chains [i](#)

Unable to reproduce the depositors R factor - this section is therefore empty.

### 6.2 Non-standard residues in protein, DNA, RNA chains [i](#)

Unable to reproduce the depositors R factor - this section is therefore empty.

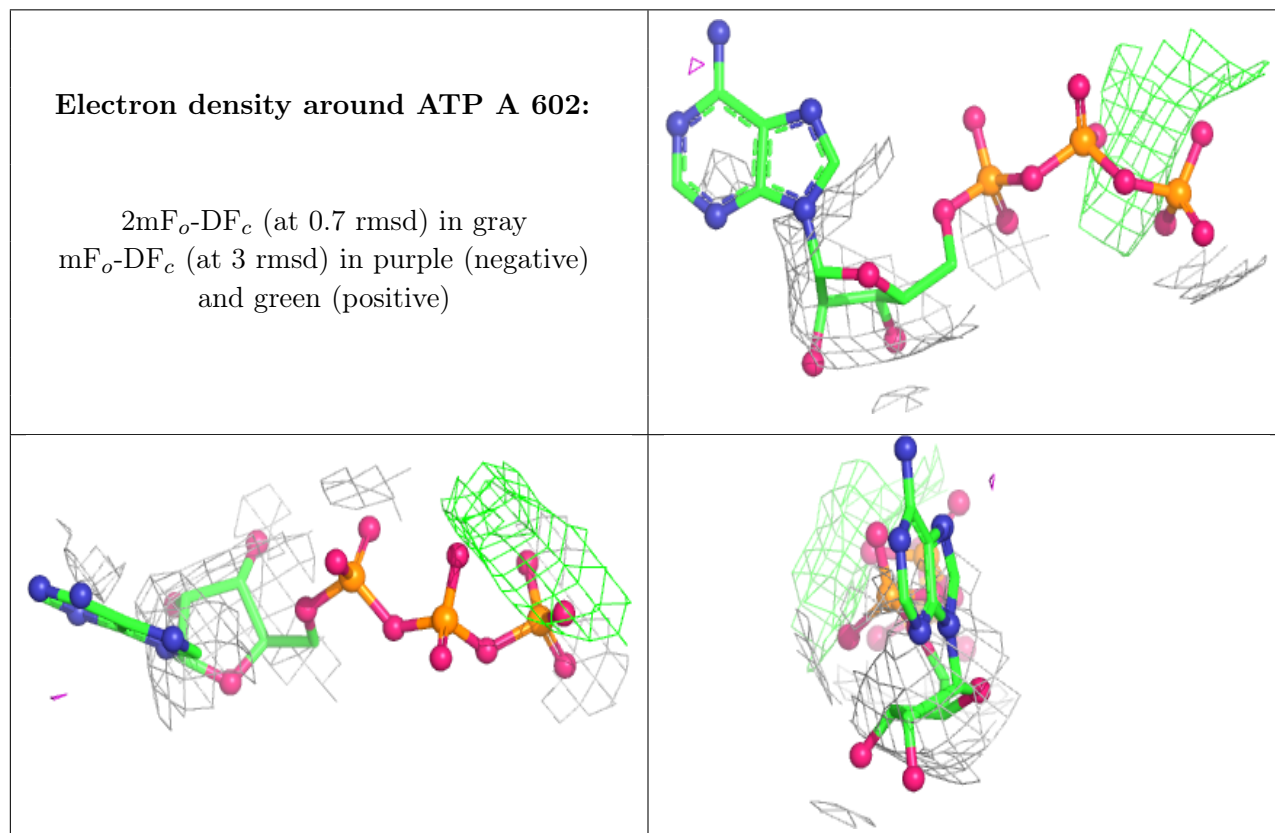
### 6.3 Carbohydrates [i](#)

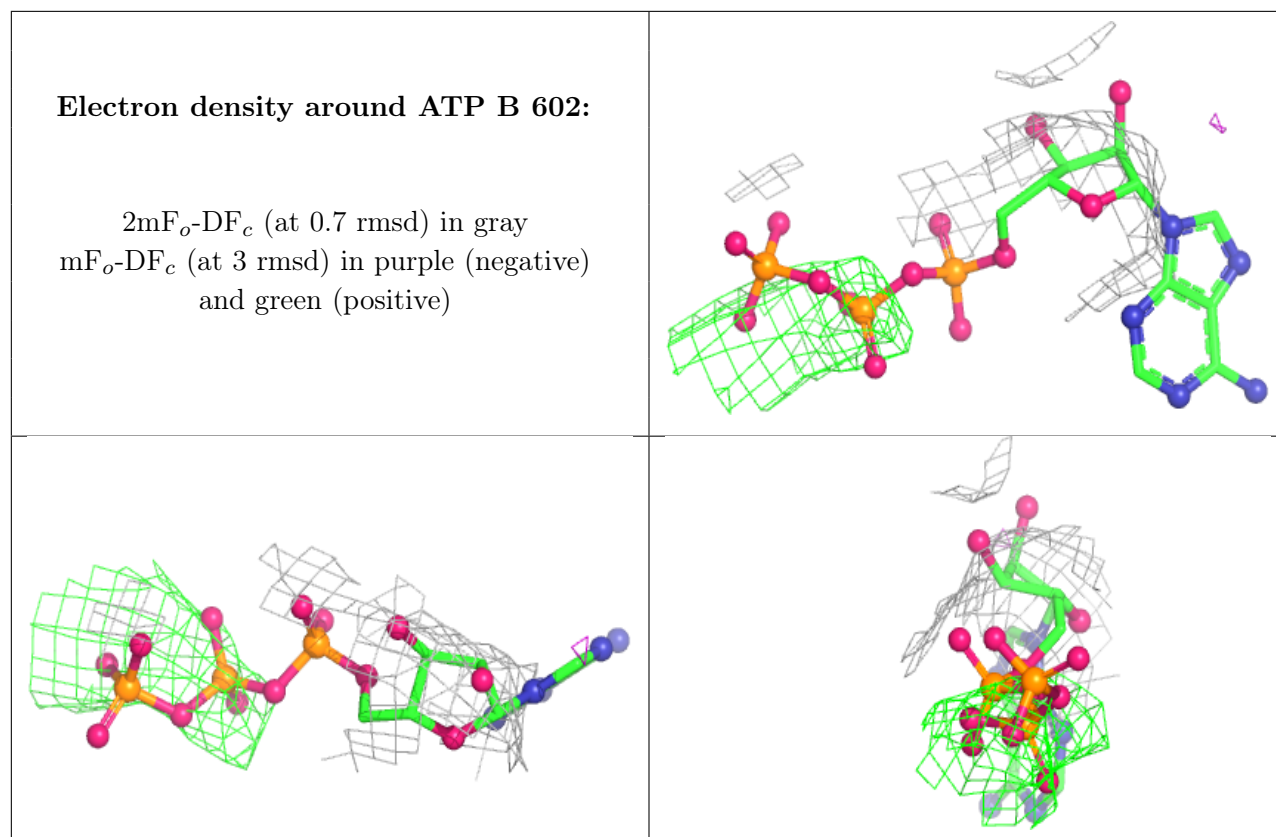
Unable to reproduce the depositors R factor - this section is therefore empty.

### 6.4 Ligands [i](#)

Unable to reproduce the depositors R factor - this section is therefore empty.

The following is a graphical depiction of the model fit to experimental electron density of all instances of the Ligand of Interest. In addition, ligands with molecular weight > 250 and outliers as shown on the geometry validation Tables will also be included. Each fit is shown from different orientation to approximate a three-dimensional view.





## 6.5 Other polymers [i](#)

Unable to reproduce the depositors R factor - this section is therefore empty.