



# Full wwPDB EM Validation Report ⓘ

Mar 20, 2024 – 05:59 AM JST

PDB ID : 6LZ0  
EMDB ID : EMD-30020  
Title : Cryo-EM structure of human MCT1 in complex with Basigin-2 in the presence of lactate  
Authors : Wang, N.; Jiang, X.; Zhang, S.; Zhu, A.; Yuan, Y.; Lei, J.; Yan, C.  
Deposited on : 2020-02-16  
Resolution : 3.30 Å(reported)

This is a Full wwPDB EM Validation Report for a publicly released PDB entry.

We welcome your comments at [validation@mail.wwpdb.org](mailto:validation@mail.wwpdb.org)

A user guide is available at

<https://www.wwpdb.org/validation/2017/EMValidationReportHelp>

with specific help available everywhere you see the ⓘ symbol.

The types of validation reports are described at

<http://www.wwpdb.org/validation/2017/FAQs#types>.

---

The following versions of software and data (see [references ⓘ](#)) were used in the production of this report:

EMDB validation analysis : 0.0.1.dev70  
Mogul : 1.8.5 (274361), CSD as541be (2020)  
MolProbity : 4.02b-467  
buster-report : 1.1.7 (2018)  
Percentile statistics : 20191225.v01 (using entries in the PDB archive December 25th 2019)  
MapQ : 1.9.13  
Ideal geometry (proteins) : Engh & Huber (2001)  
Ideal geometry (DNA, RNA) : Parkinson et al. (1996)  
Validation Pipeline (wwPDB-VP) : 2.36

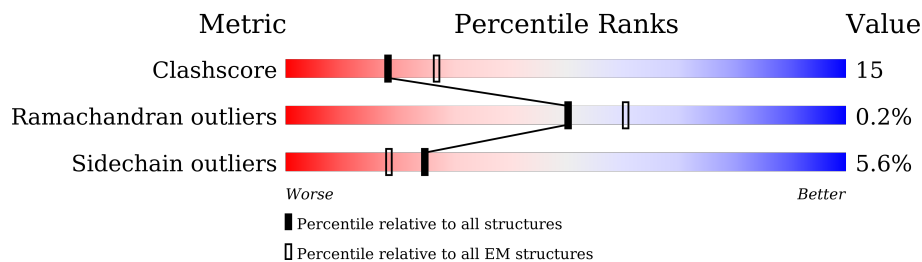
# 1 Overall quality at a glance

The following experimental techniques were used to determine the structure:

*ELECTRON MICROSCOPY*

The reported resolution of this entry is 3.30 Å.

Percentile scores (ranging between 0-100) for global validation metrics of the entry are shown in the following graphic. The table shows the number of entries on which the scores are based.



Metric	Whole archive (#Entries)	EM structures (#Entries)
Clashscore	158937	4297
Ramachandran outliers	154571	4023
Sidechain outliers	154315	3826

The table below summarises the geometric issues observed across the polymeric chains and their fit to the map. The red, orange, yellow and green segments of the bar indicate the fraction of residues that contain outliers for  $\geq 3$ , 2, 1 and 0 types of geometric quality criteria respectively. A grey segment represents the fraction of residues that are not modelled. The numeric value for each fraction is indicated below the corresponding segment, with a dot representing fractions  $\leq 5\%$ . The upper red bar (where present) indicates the fraction of residues that have poor fit to the EM map (all-atom inclusion  $< 40\%$ ). The numeric value is given above the bar.

Mol	Chain	Length	Quality of chain
1	A	500	
2	B	269	

The following table lists non-polymeric compounds, carbohydrate monomers and non-standard residues in protein, DNA, RNA chains that are outliers for geometric or electron-density-fit criteria:

Mol	Type	Chain	Res	Chirality	Geometry	Clashes	Electron density
3	2OP	A	601	-	-	X	-

## 2 Entry composition [i](#)

There are 3 unique types of molecules in this entry. The entry contains 4006 atoms, of which 0 are hydrogens and 0 are deuteriums.

In the tables below, the AltConf column contains the number of residues with at least one atom in alternate conformation and the Trace column contains the number of residues modelled with at most 2 atoms.

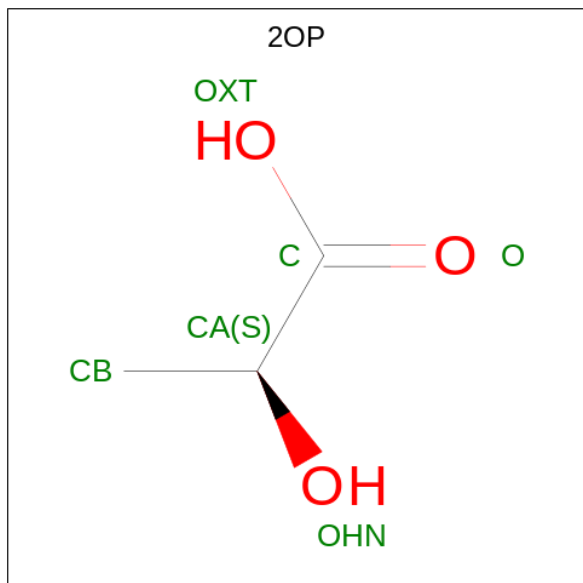
- Molecule 1 is a protein called Monocarboxylate transporter 1.

Mol	Chain	Residues	Atoms					AltConf	Trace
			Total	C	N	O	S		
1	A	375	2846	1896	452	473	25	0	0

- Molecule 2 is a protein called Basigin.

Mol	Chain	Residues	Atoms				AltConf	Trace
			Total	C	N	O		
2	B	216	1154	705	227	222	0	0

- Molecule 3 is (2S)-2-HYDROXYPROPANOIC ACID (three-letter code: 2OP) (formula: C<sub>3</sub>H<sub>6</sub>O<sub>3</sub>) (labeled as "Ligand of Interest" by depositor).

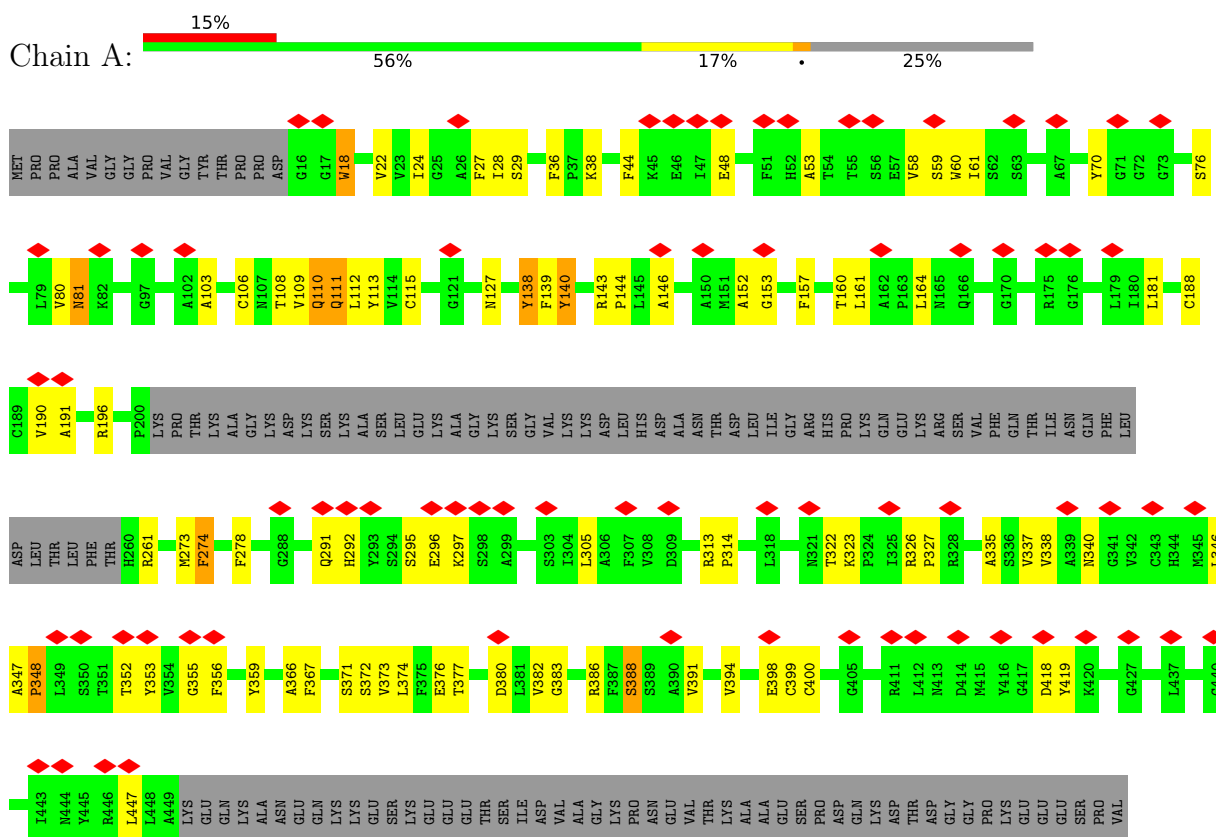


Mol	Chain	Residues	Atoms			AltConf
			Total	C	O	
3	A	1	6	3	3	0

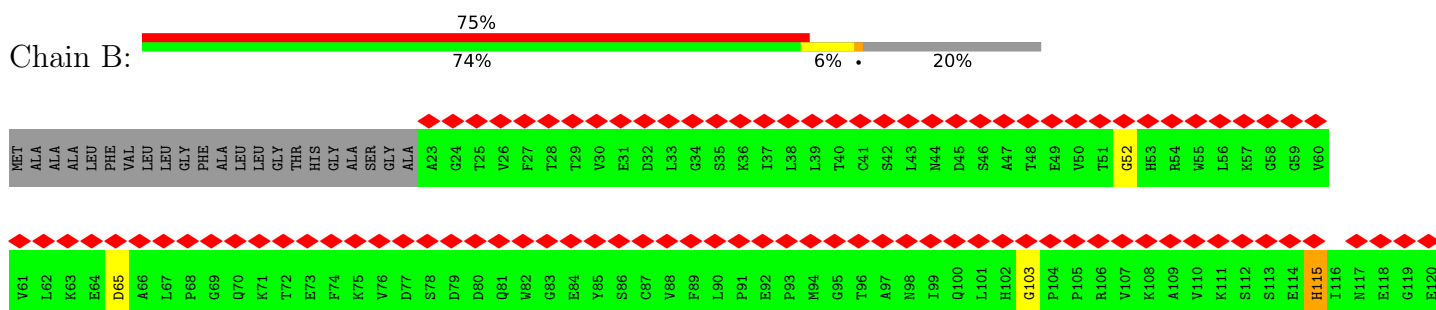
### 3 Residue-property plots [i](#)

These plots are drawn for all protein, RNA, DNA and oligosaccharide chains in the entry. The first graphic for a chain summarises the proportions of the various outlier classes displayed in the second graphic. The second graphic shows the sequence view annotated by issues in geometry and atom inclusion in map density. Residues are color-coded according to the number of geometric quality criteria for which they contain at least one outlier: green = 0, yellow = 1, orange = 2 and red = 3 or more. A red diamond above a residue indicates a poor fit to the EM map for this residue (all-atom inclusion < 40%). Stretches of 2 or more consecutive residues without any outlier are shown as a green connector. Residues present in the sample, but not in the model, are shown in grey.

- Molecule 1: Monocarboxylate transporter 1



- Molecule 2: Basigin



T121	G181	GLY
A122	Q182	SER
M123	Y183	ALA
L124	R184	PRO
V125	L185	LEU
C126	M186	LYS
K127	G187	SER
S128	T188	SER
E129	S189	GLY
S130	S190	GLN
V131	K191	GLN
P132	G192	ASN
P133	S193	ASP
V134	D194	LYS
T135	Q195	LYS
D136	A196	ASN
W137	I197	VAL
A138	I198	ARG
W139	T199	ARG
Y140	L200	ARG
K141	R201	ASN
I142	V202	SER
T143	R203	SER
D144	S204	SER
S145	H205	GLY
E146	L206	GLY
D147	A207	GLY
K148	A208	GLY
A149	L209	GLY
L150	W210	GLY
M151	P211	GLY
N152	F212	GLY
G153	L213	GLY
S154	V216	GLY
E155	A217	GLY
S156	E218	GLY
R157	V219	GLY
F158	L220	GLY
F159	V221	GLY
V160	L222	GLY
S161	V223	GLY
S162	T224	GLY
S163	I225	GLY
Q164	Y229	GLY
G165	E230	GLY
R166	R233	GLY
S167	K234	GLY
E168	P235	GLY
L169	E236	GLY
H170	D237	GLY
I171	V238	GLY
E172	LEU	LEU
N173	ASP	ASP
L174	ASP	ASP
N175	ASP	ASP
M176	ASP	ASP
E177	ALA	ALA
A178		
D179		
P180		

## 4 Experimental information

Property	Value	Source
EM reconstruction method	SINGLE PARTICLE	Depositor
Imposed symmetry	POINT, C1	Depositor
Number of particles used	843599	Depositor
Resolution determination method	FSC 0.143 CUT-OFF	Depositor
CTF correction method	NONE	Depositor
Microscope	FEI TITAN KRIOS	Depositor
Voltage (kV)	300	Depositor
Electron dose ( $e^-/\text{\AA}^2$ )	37.6	Depositor
Minimum defocus (nm)	Not provided	
Maximum defocus (nm)	Not provided	
Magnification	Not provided	
Image detector	GATAN K3 (6k x 4k)	Depositor
Maximum map value	0.328	Depositor
Minimum map value	-0.169	Depositor
Average map value	0.000	Depositor
Map value standard deviation	0.007	Depositor
Recommended contour level	0.06	Depositor
Map size ( $\text{\AA}$ )	217.40001, 217.40001, 217.40001	wwPDB
Map dimensions	200, 200, 200	wwPDB
Map angles ( $^\circ$ )	90.0, 90.0, 90.0	wwPDB
Pixel spacing ( $\text{\AA}$ )	1.087, 1.087, 1.087	Depositor

## 5 Model quality [i](#)

### 5.1 Standard geometry [i](#)

Bond lengths and bond angles in the following residue types are not validated in this section: 2OP

The Z score for a bond length (or angle) is the number of standard deviations the observed value is removed from the expected value. A bond length (or angle) with  $|Z| > 5$  is considered an outlier worth inspection. RMSZ is the root-mean-square of all Z scores of the bond lengths (or angles).

Mol	Chain	Bond lengths		Bond angles	
		RMSZ	# Z  >5	RMSZ	# Z  >5
1	A	0.39	0/2926	0.48	0/3972
2	B	0.48	0/1160	0.70	0/1606
All	All	0.42	0/4086	0.55	0/5578

Chiral center outliers are detected by calculating the chiral volume of a chiral center and verifying if the center is modelled as a planar moiety or with the opposite hand. A planarity outlier is detected by checking planarity of atoms in a peptide group, atoms in a mainchain group or atoms of a sidechain that are expected to be planar.

Mol	Chain	#Chirality outliers	#Planarity outliers
1	A	0	1

There are no bond length outliers.

There are no bond angle outliers.

There are no chirality outliers.

All (1) planarity outliers are listed below:

Mol	Chain	Res	Type	Group
1	A	348	PRO	Peptide

### 5.2 Too-close contacts [i](#)

In the following table, the Non-H and H(model) columns list the number of non-hydrogen atoms and hydrogen atoms in the chain respectively. The H(added) column lists the number of hydrogen atoms added and optimized by MolProbity. The Clashes column lists the number of clashes within the asymmetric unit, whereas Symm-Clashes lists symmetry-related clashes.

Mol	Chain	Non-H	H(model)	H(added)	Clashes	Symm-Clashes
1	A	2846	0	2901	94	0
2	B	1154	0	660	21	0
3	A	6	0	5	10	0
All	All	4006	0	3566	111	0

The all-atom clashscore is defined as the number of clashes found per 1000 atoms (including hydrogen atoms). The all-atom clashscore for this structure is 15.

All (111) close contacts within the same asymmetric unit are listed below, sorted by their clash magnitude.

Atom-1	Atom-2	Interatomic distance (Å)	Clash overlap (Å)
1:A:278:PHE:CE2	3:A:601:2OP:HB1	1.66	1.30
1:A:110:GLN:HA	1:A:113:TYR:HD2	1.16	1.08
1:A:103:ALA:HB2	1:A:115:CYS:HB3	1.31	1.07
1:A:140:TYR:HB2	1:A:143:ARG:HD3	1.36	1.06
1:A:110:GLN:HA	1:A:113:TYR:CD2	2.00	0.97
1:A:278:PHE:HE2	3:A:601:2OP:CB	1.83	0.92
1:A:278:PHE:CD2	3:A:601:2OP:HB1	2.06	0.90
1:A:103:ALA:CB	1:A:115:CYS:HB3	2.04	0.87
1:A:274:PHE:CZ	1:A:398:GLU:CD	2.47	0.87
1:A:278:PHE:HE2	3:A:601:2OP:HB1	1.04	0.86
2:B:115:HIS:CD2	2:B:201:ARG:HB3	2.15	0.82
1:A:291:GLN:O	1:A:292:HIS:ND1	2.13	0.82
1:A:22:VAL:HG21	1:A:138:TYR:CD2	2.16	0.80
1:A:140:TYR:CB	1:A:143:ARG:HD3	2.12	0.79
1:A:106:CYS:SG	1:A:112:LEU:HD23	2.24	0.78
1:A:127:ASN:ND2	1:A:188:CYS:SG	2.57	0.78
1:A:108:THR:OG1	1:A:111:GLN:HB2	1.83	0.77
2:B:115:HIS:CD2	2:B:201:ARG:CB	2.68	0.76
1:A:352:THR:O	1:A:355:GLY:N	2.21	0.73
1:A:196:ARG:HD2	2:B:230:GLU:OE2	1.91	0.70
2:B:103:GLY:O	2:B:191:LYS:CB	2.40	0.70
1:A:278:PHE:CE2	3:A:601:2OP:CB	2.59	0.70
1:A:18:TRP:CZ2	1:A:196:ARG:HD3	2.26	0.70
1:A:106:CYS:SG	1:A:112:LEU:CD2	2.79	0.70
1:A:388:SER:O	1:A:391:VAL:HG12	1.92	0.69
1:A:313:ARG:NH1	1:A:371:SER:HB3	2.08	0.69
1:A:274:PHE:CE2	1:A:398:GLU:CG	2.77	0.67
1:A:326:ARG:HB3	1:A:327:PRO:HD3	1.77	0.65
1:A:340:ASN:OD1	1:A:366:ALA:HB1	1.97	0.65
1:A:70:TYR:CE2	1:A:398:GLU:OE2	2.49	0.65
1:A:274:PHE:CE2	1:A:398:GLU:CD	2.71	0.64

*Continued on next page...*



*Continued from previous page...*

Atom-1	Atom-2	Interatomic distance (Å)	Clash overlap (Å)
1:A:138:TYR:HB3	1:A:139:PHE:HD1	1.63	0.63
2:B:115:HIS:CD2	2:B:201:ARG:HB2	2.34	0.62
1:A:196:ARG:HD2	2:B:230:GLU:CD	2.21	0.61
1:A:347:ALA:HB3	1:A:348:PRO:HD3	1.81	0.61
1:A:36:PHE:CE1	1:A:181:LEU:HD23	2.35	0.60
1:A:152:ALA:HA	1:A:313:ARG:CD	2.34	0.58
1:A:418:ASP:OD1	1:A:419:TYR:N	2.34	0.58
1:A:140:TYR:HB2	1:A:143:ARG:HH11	1.70	0.57
1:A:108:THR:HG1	1:A:111:GLN:CD	2.08	0.57
1:A:372:SER:OG	1:A:373:VAL:N	2.40	0.55
1:A:297:LYS:O	1:A:353:TYR:OH	2.25	0.55
1:A:18:TRP:CZ2	1:A:196:ARG:CD	2.91	0.54
1:A:18:TRP:CH2	1:A:196:ARG:HD3	2.42	0.54
2:B:115:HIS:HD2	2:B:201:ARG:CB	2.18	0.54
1:A:152:ALA:HA	1:A:313:ARG:HD2	1.89	0.53
1:A:38:LYS:NZ	3:A:601:2OP:O	2.42	0.53
2:B:115:HIS:O	2:B:203:ARG:NH2	2.41	0.53
1:A:110:GLN:O	1:A:113:TYR:HB2	2.09	0.53
1:A:27:PHE:CE1	1:A:153:GLY:HA2	2.45	0.52
1:A:18:TRP:CZ2	1:A:196:ARG:NE	2.78	0.51
2:B:217:ALA:O	2:B:221:VAL:HG23	2.10	0.51
2:B:204:SER:O	2:B:206:LEU:N	2.43	0.51
1:A:346:LEU:HD23	1:A:346:LEU:O	2.10	0.51
1:A:305:LEU:C	1:A:305:LEU:HD23	2.31	0.51
1:A:313:ARG:CB	1:A:314:PRO:HD3	2.41	0.50
1:A:274:PHE:CE2	1:A:398:GLU:HG3	2.46	0.50
1:A:313:ARG:NH1	1:A:371:SER:CB	2.73	0.50
1:A:352:THR:HG22	1:A:353:TYR:N	2.27	0.50
1:A:367:PHE:HZ	3:A:601:2OP:HHN	1.59	0.49
1:A:22:VAL:HG21	1:A:138:TYR:CE2	2.47	0.49
1:A:399:CYS:SG	1:A:400:CYS:N	2.86	0.49
2:B:115:HIS:NE2	2:B:201:ARG:HB3	2.28	0.48
1:A:352:THR:HG22	1:A:353:TYR:H	1.77	0.48
1:A:38:LYS:HZ1	3:A:601:2OP:CA	2.26	0.48
1:A:273:MET:CE	1:A:337:VAL:HG22	2.43	0.48
1:A:38:LYS:HZ1	3:A:601:2OP:HA	1.78	0.48
1:A:274:PHE:CZ	1:A:398:GLU:OE2	2.67	0.47
1:A:28:ILE:HG23	1:A:191:ALA:HB1	1.95	0.47
1:A:391:VAL:HA	1:A:394:VAL:HG12	1.97	0.47
1:A:313:ARG:HB2	1:A:314:PRO:HD3	1.97	0.46
1:A:291:GLN:O	1:A:292:HIS:CG	2.68	0.46

*Continued on next page...*

Continued from previous page...

Atom-1	Atom-2	Interatomic distance (Å)	Clash overlap (Å)
2:B:52:GLY:HA3	2:B:65:ASP:HA	1.97	0.46
1:A:335:ALA:HA	1:A:338:VAL:HG12	1.97	0.46
1:A:80:VAL:HG13	1:A:81:ASN:N	2.30	0.45
2:B:115:HIS:HB3	2:B:203:ARG:HH21	1.81	0.45
2:B:210:TRP:HB2	2:B:211:PRO:HD3	1.98	0.45
2:B:115:HIS:HD2	2:B:201:ARG:HB3	1.71	0.45
2:B:115:HIS:C	2:B:203:ARG:NH2	2.69	0.45
1:A:109:VAL:O	1:A:112:LEU:HB2	2.17	0.45
1:A:274:PHE:CZ	1:A:398:GLU:OE1	2.70	0.45
1:A:382:VAL:HG13	1:A:383:GLY:N	2.32	0.45
1:A:24:ILE:O	1:A:27:PHE:HB3	2.17	0.45
2:B:221:VAL:O	2:B:224:THR:OG1	2.29	0.44
1:A:28:ILE:CG2	1:A:191:ALA:HB1	2.47	0.44
1:A:48:GLU:HA	1:A:53:ALA:HB3	2.00	0.44
1:A:112:LEU:HD23	1:A:112:LEU:HA	1.76	0.44
1:A:161:LEU:O	1:A:164:LEU:N	2.50	0.44
1:A:322:THR:HG22	1:A:323:LYS:H	1.83	0.44
1:A:18:TRP:CD1	1:A:18:TRP:O	2.71	0.44
1:A:152:ALA:HA	1:A:313:ARG:HD3	1.99	0.43
1:A:143:ARG:N	1:A:144:PRO:HD2	2.33	0.43
1:A:374:LEU:O	1:A:377:THR:HG22	2.17	0.43
1:A:18:TRP:CD1	1:A:18:TRP:C	2.90	0.43
1:A:139:PHE:CZ	1:A:146:ALA:HB2	2.53	0.43
1:A:278:PHE:HE2	3:A:601:2OP:CA	2.28	0.43
1:A:29:SER:OG	1:A:127:ASN:OD1	2.35	0.43
1:A:261:ARG:HG3	1:A:447:LEU:CD1	2.49	0.43
1:A:190:VAL:HG23	2:B:223:VAL:HG23	2.00	0.43
2:B:204:SER:C	2:B:206:LEU:N	2.73	0.42
1:A:108:THR:HG1	1:A:111:GLN:HB2	1.84	0.42
1:A:297:LYS:HB3	1:A:353:TYR:CZ	2.55	0.42
1:A:190:VAL:CG2	2:B:223:VAL:HG23	2.50	0.42
1:A:18:TRP:O	1:A:18:TRP:CG	2.73	0.41
1:A:356:PHE:O	1:A:359:TYR:HB3	2.21	0.41
1:A:295:SER:OG	1:A:296:GLU:N	2.54	0.41
1:A:373:VAL:O	1:A:374:LEU:C	2.57	0.41
1:A:44:PHE:HB3	1:A:58:VAL:HG11	2.02	0.41
1:A:157:PHE:HA	1:A:160:THR:HG22	2.04	0.40
2:B:204:SER:C	2:B:206:LEU:H	2.24	0.40
1:A:36:PHE:CZ	1:A:181:LEU:HD23	2.56	0.40

There are no symmetry-related clashes.

## 5.3 Torsion angles [i](#)

### 5.3.1 Protein backbone [i](#)

In the following table, the Percentiles column shows the percent Ramachandran outliers of the chain as a percentile score with respect to all PDB entries followed by that with respect to all EM entries.

The Analysed column shows the number of residues for which the backbone conformation was analysed, and the total number of residues.

Mol	Chain	Analysed	Favoured	Allowed	Outliers	Percentiles	
1	A	371/500 (74%)	321 (86%)	50 (14%)	0	100	100
2	B	214/269 (80%)	198 (92%)	15 (7%)	1 (0%)	29	61
All	All	585/769 (76%)	519 (89%)	65 (11%)	1 (0%)	50	77

All (1) Ramachandran outliers are listed below:

Mol	Chain	Res	Type
2	B	205	HIS

### 5.3.2 Protein sidechains [i](#)

In the following table, the Percentiles column shows the percent sidechain outliers of the chain as a percentile score with respect to all PDB entries followed by that with respect to all EM entries.

The Analysed column shows the number of residues for which the sidechain conformation was analysed, and the total number of residues.

Mol	Chain	Analysed	Rotameric	Outliers	Percentiles	
1	A	299/405 (74%)	284 (95%)	15 (5%)	24	55
2	B	25/225 (11%)	22 (88%)	3 (12%)	5	20
All	All	324/630 (51%)	306 (94%)	18 (6%)	25	52

All (18) residues with a non-rotameric sidechain are listed below:

Mol	Chain	Res	Type
1	A	18	TRP
1	A	59	SER
1	A	60	TRP
1	A	61	ILE
1	A	76	SER

*Continued on next page...*

*Continued from previous page...*

Mol	Chain	Res	Type
1	A	81	ASN
1	A	110	GLN
1	A	111	GLN
1	A	138	TYR
1	A	140	TYR
1	A	274	PHE
1	A	376	GLU
1	A	380	ASP
1	A	386	ARG
1	A	388	SER
2	B	115	HIS
2	B	204	SER
2	B	218	GLU

Sometimes sidechains can be flipped to improve hydrogen bonding and reduce clashes. All (3) such sidechains are listed below:

Mol	Chain	Res	Type
1	A	127	ASN
1	A	260	HIS
1	A	413	ASN

### 5.3.3 RNA [i](#)

There are no RNA molecules in this entry.

## 5.4 Non-standard residues in protein, DNA, RNA chains [i](#)

There are no non-standard protein/DNA/RNA residues in this entry.

## 5.5 Carbohydrates [i](#)

There are no monosaccharides in this entry.

## 5.6 Ligand geometry [i](#)

1 ligand is modelled in this entry.

In the following table, the Counts columns list the number of bonds (or angles) for which Mogul statistics could be retrieved, the number of bonds (or angles) that are observed in the model and

the number of bonds (or angles) that are defined in the Chemical Component Dictionary. The Link column lists molecule types, if any, to which the group is linked. The Z score for a bond length (or angle) is the number of standard deviations the observed value is removed from the expected value. A bond length (or angle) with  $|Z| > 2$  is considered an outlier worth inspection. RMSZ is the root-mean-square of all Z scores of the bond lengths (or angles).

Mol	Type	Chain	Res	Link	Bond lengths			Bond angles		
					Counts	RMSZ	# Z  > 2	Counts	RMSZ	# Z  > 2
3	2OP	A	601	-	5,5,5	0.93	0	4,6,6	0.38	0

In the following table, the Chirals column lists the number of chiral outliers, the number of chiral centers analysed, the number of these observed in the model and the number defined in the Chemical Component Dictionary. Similar counts are reported in the Torsion and Rings columns. '-' means no outliers of that kind were identified.

Mol	Type	Chain	Res	Link	Chirals	Torsions	Rings
3	2OP	A	601	-	-	4/4/4/4	-

There are no bond length outliers.

There are no bond angle outliers.

There are no chirality outliers.

All (4) torsion outliers are listed below:

Mol	Chain	Res	Type	Atoms
3	A	601	2OP	O-C-CA-CB
3	A	601	2OP	OXT-C-CA-CB
3	A	601	2OP	O-C-CA-OHN
3	A	601	2OP	OXT-C-CA-OHN

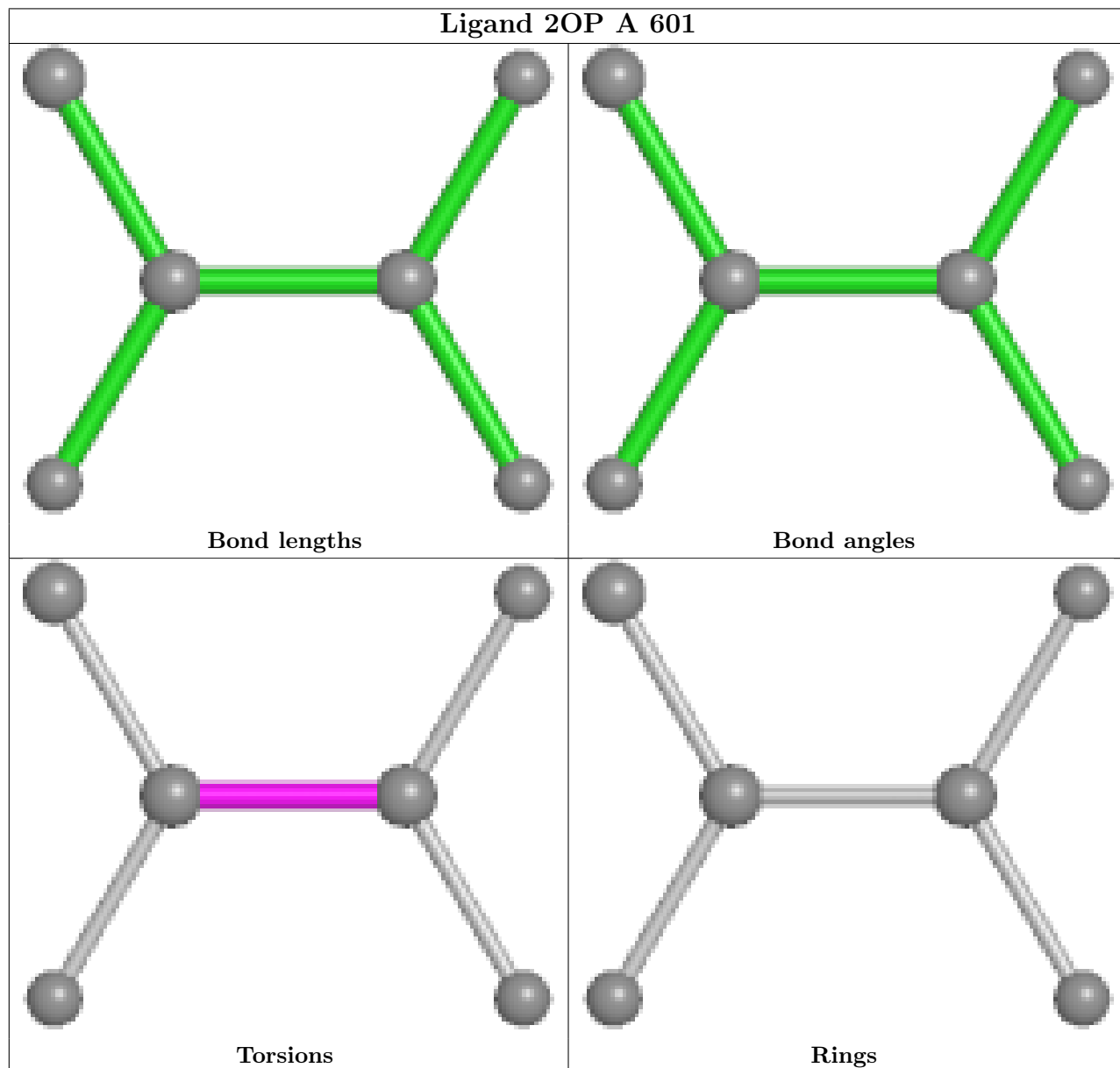
There are no ring outliers.

1 monomer is involved in 10 short contacts:

Mol	Chain	Res	Type	Clashes	Symm-Clashes
3	A	601	2OP	10	0

The following is a two-dimensional graphical depiction of Mogul quality analysis of bond lengths, bond angles, torsion angles, and ring geometry for all instances of the Ligand of Interest. In addition, ligands with molecular weight > 250 and outliers as shown on the validation Tables will also be included. For torsion angles, if less than 5% of the Mogul distribution of torsion angles is within 10 degrees of the torsion angle in question, then that torsion angle is considered an outlier. Any bond that is central to one or more torsion angles identified as an outlier by Mogul will be highlighted in the graph. For rings, the root-mean-square deviation (RMSD) between the ring in question and similar rings identified by Mogul is calculated over all ring torsion angles. If the

average RMSD is greater than 60 degrees and the minimal RMSD between the ring in question and any Mogul-identified rings is also greater than 60 degrees, then that ring is considered an outlier. The outliers are highlighted in purple. The color gray indicates Mogul did not find sufficient equivalents in the CSD to analyse the geometry.



## 5.7 Other polymers [i](#)

There are no such residues in this entry.

## 5.8 Polymer linkage issues [i](#)

There are no chain breaks in this entry.

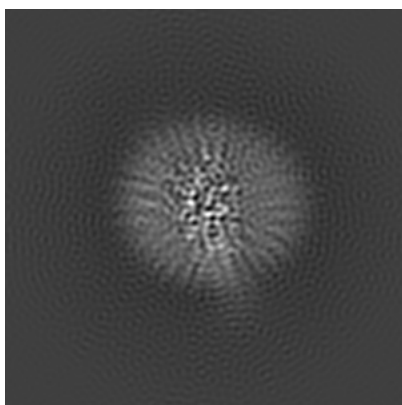
## 6 Map visualisation [i](#)

This section contains visualisations of the EMDB entry EMD-30020. These allow visual inspection of the internal detail of the map and identification of artifacts.

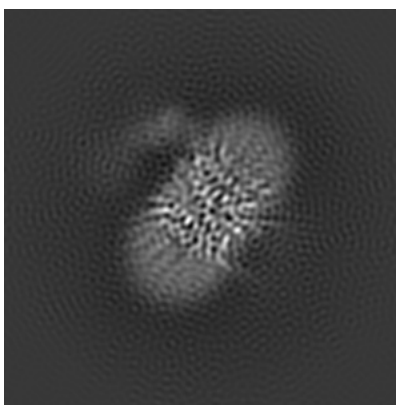
No raw map or half-maps were deposited for this entry and therefore no images, graphs, etc. pertaining to the raw map can be shown.

### 6.1 Orthogonal projections [i](#)

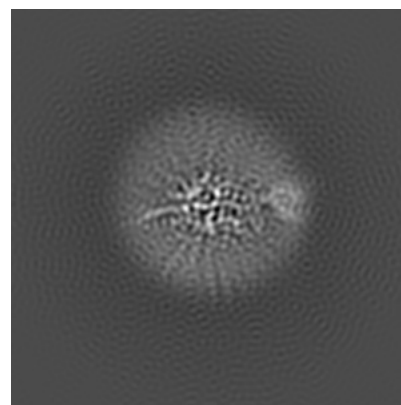
#### 6.1.1 Primary map



X



Y

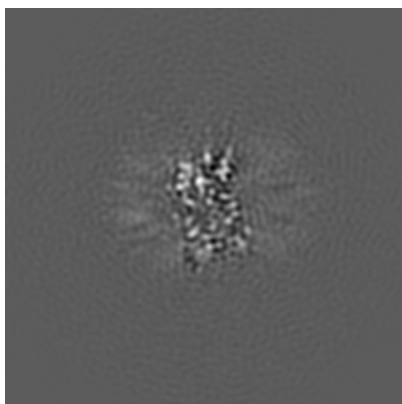


Z

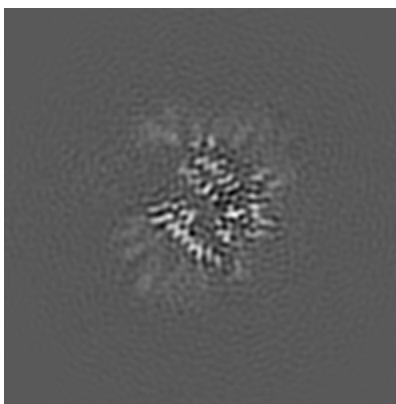
The images above show the map projected in three orthogonal directions.

### 6.2 Central slices [i](#)

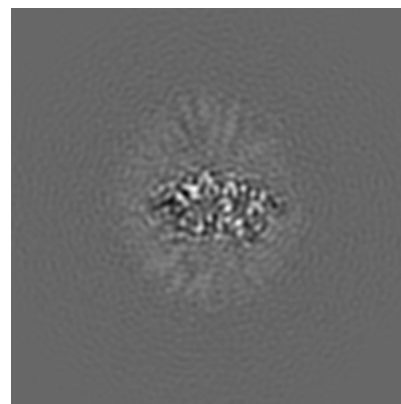
#### 6.2.1 Primary map



X Index: 100



Y Index: 100

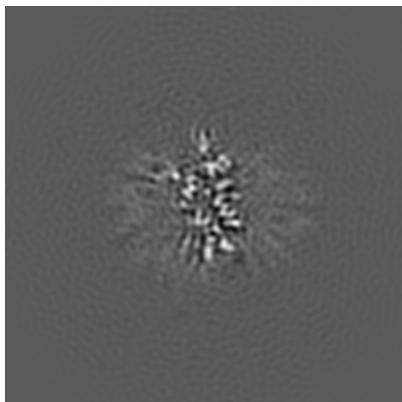


Z Index: 100

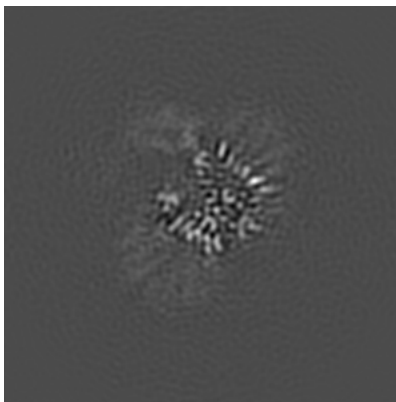
The images above show central slices of the map in three orthogonal directions.

## 6.3 Largest variance slices [i](#)

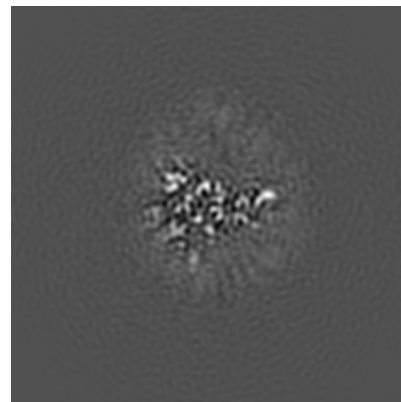
### 6.3.1 Primary map



X Index: 93



Y Index: 106

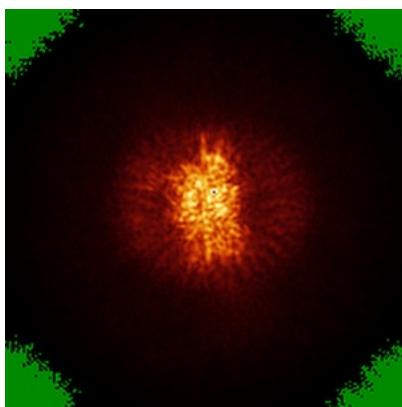


Z Index: 109

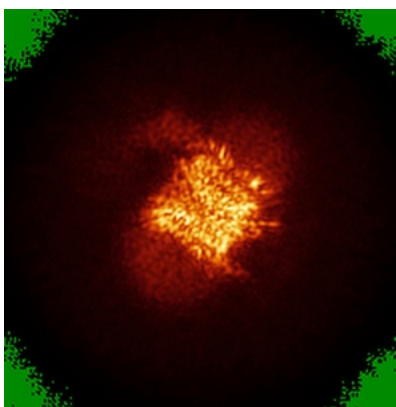
The images above show the largest variance slices of the map in three orthogonal directions.

## 6.4 Orthogonal standard-deviation projections (False-color) [i](#)

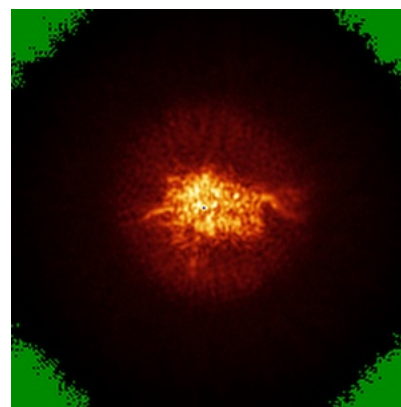
### 6.4.1 Primary map



X



Y



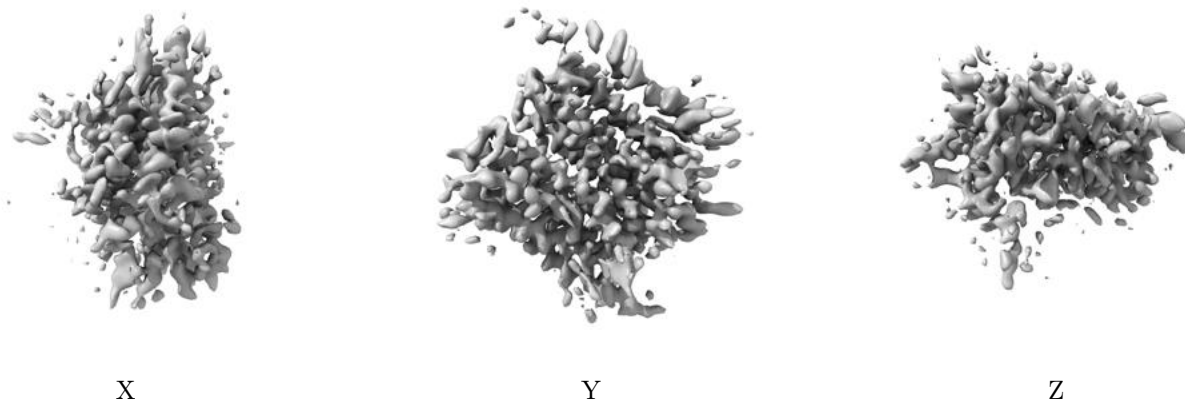
Z

The images above show the map standard deviation projections with false color in three orthogonal directions. Minimum values are shown in green, max in blue, and dark to light orange shades represent small to large values respectively.



## 6.5 Orthogonal surface views [i](#)

### 6.5.1 Primary map



The images above show the 3D surface view of the map at the recommended contour level 0.06. These images, in conjunction with the slice images, may facilitate assessment of whether an appropriate contour level has been provided.

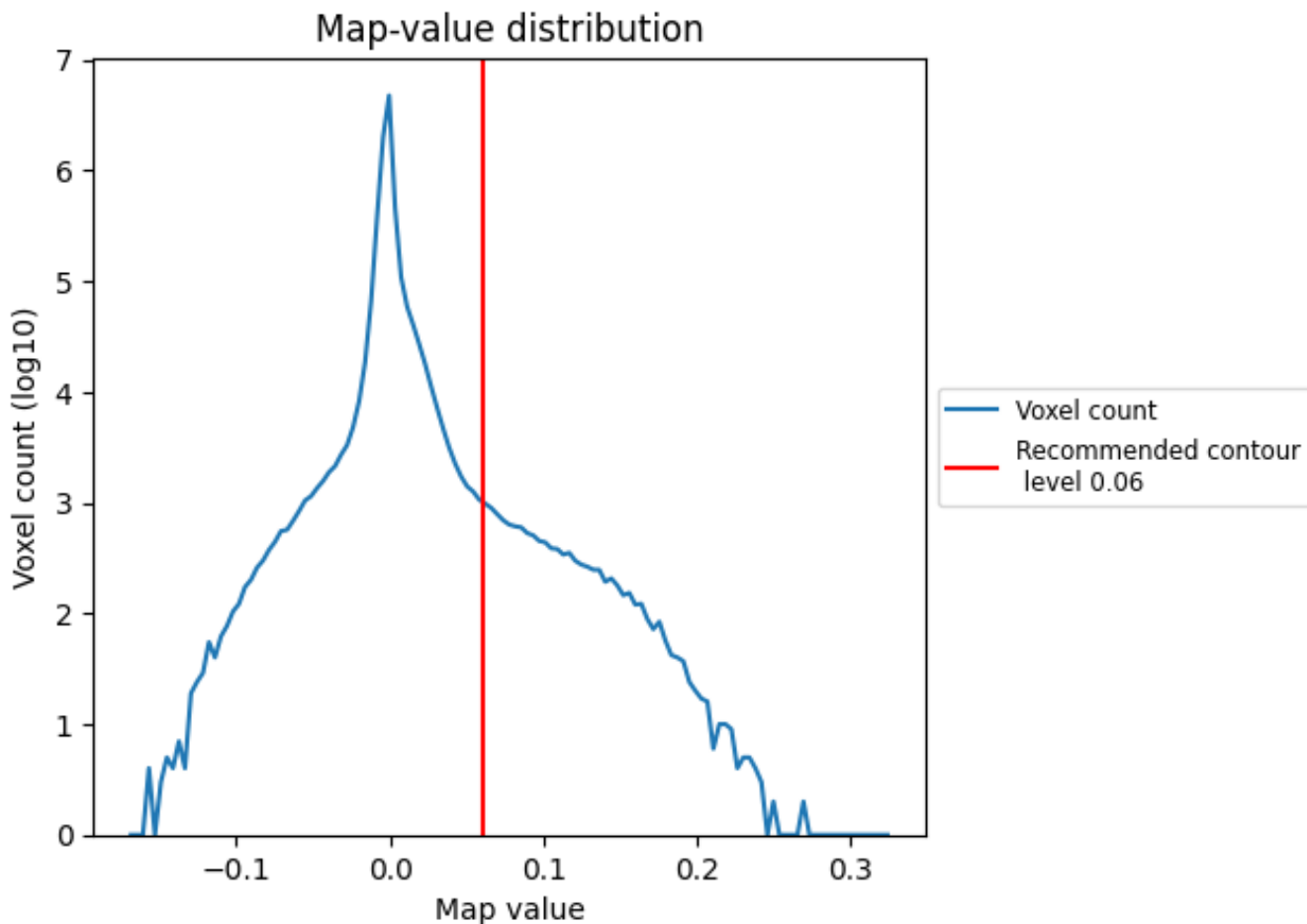
## 6.6 Mask visualisation [i](#)

This section was not generated. No masks/segmentation were deposited.

## 7 Map analysis [i](#)

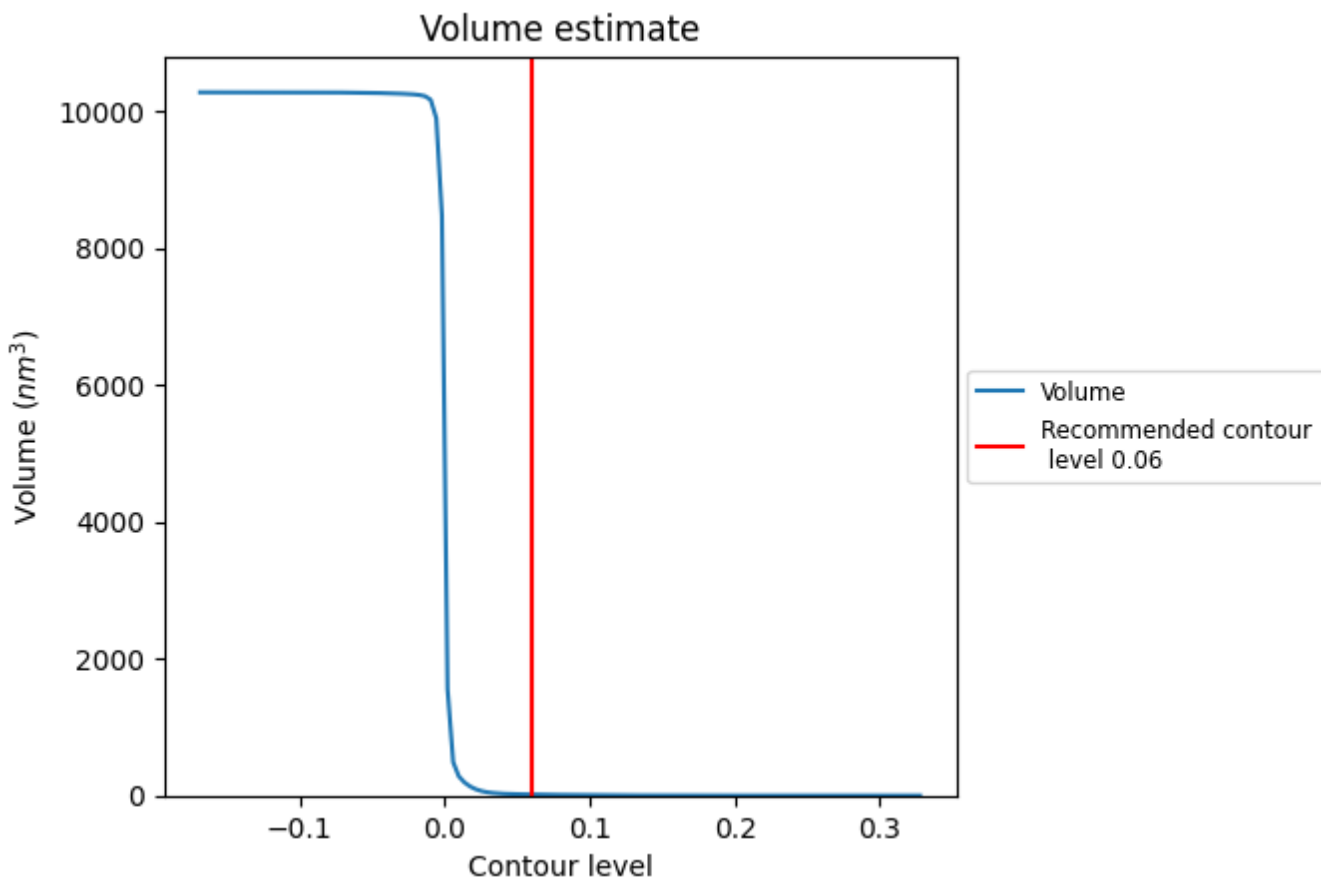
This section contains the results of statistical analysis of the map.

### 7.1 Map-value distribution [i](#)



The map-value distribution is plotted in 128 intervals along the x-axis. The y-axis is logarithmic. A spike in this graph at zero usually indicates that the volume has been masked.

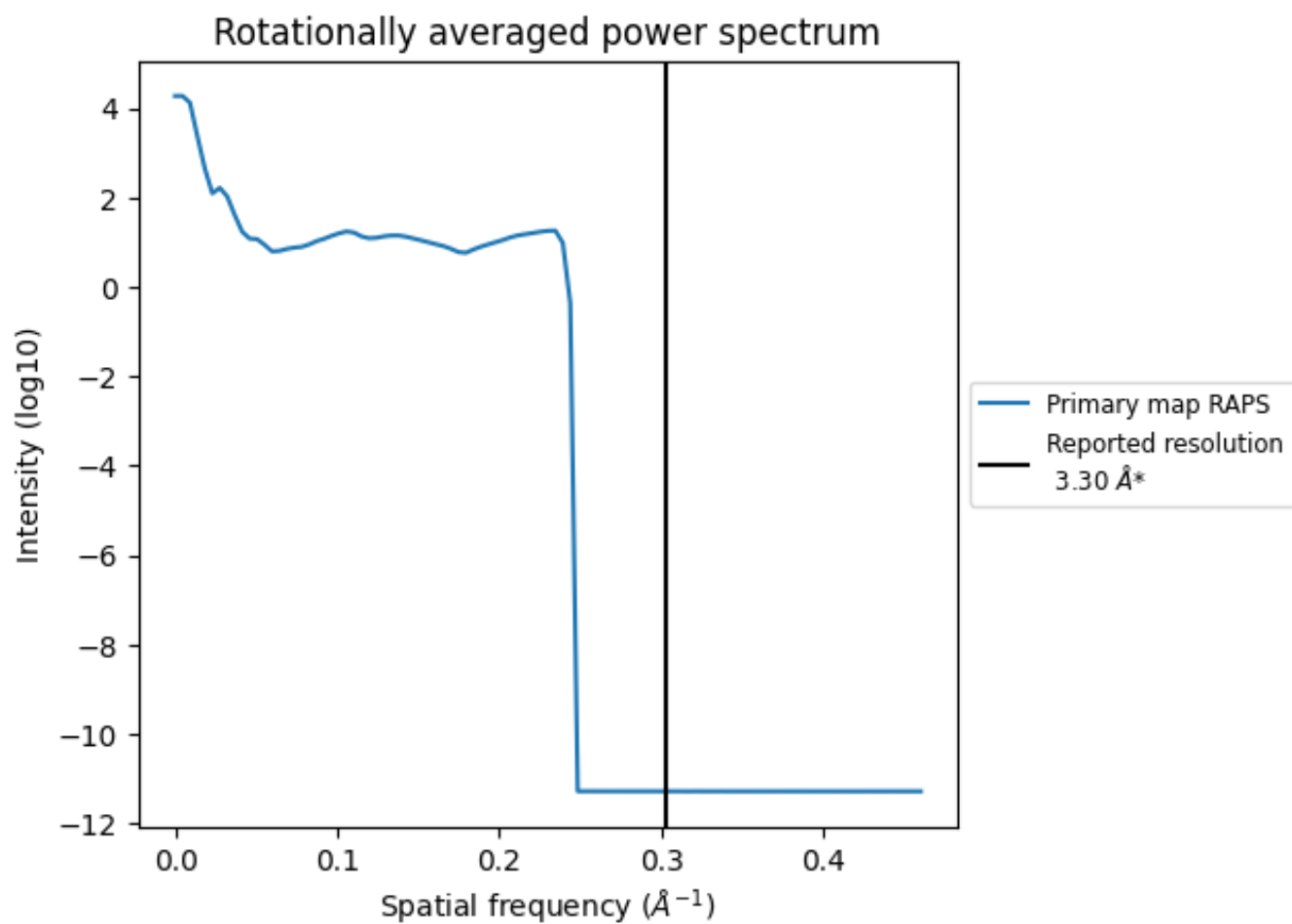
## 7.2 Volume estimate [i](#)



The volume at the recommended contour level is 16 nm<sup>3</sup>; this corresponds to an approximate mass of 14 kDa.

The volume estimate graph shows how the enclosed volume varies with the contour level. The recommended contour level is shown as a vertical line and the intersection between the line and the curve gives the volume of the enclosed surface at the given level.

### 7.3 Rotationally averaged power spectrum [\(i\)](#)



\*Reported resolution corresponds to spatial frequency of  $0.303 \text{\AA}^{-1}$

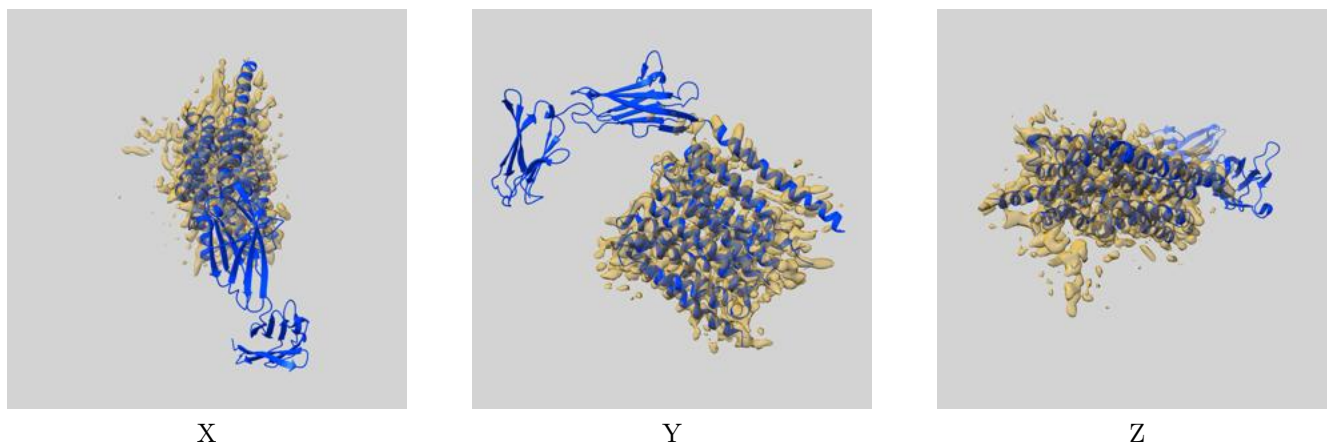
## 8 Fourier-Shell correlation

This section was not generated. No FSC curve or half-maps provided.

## 9 Map-model fit [i](#)

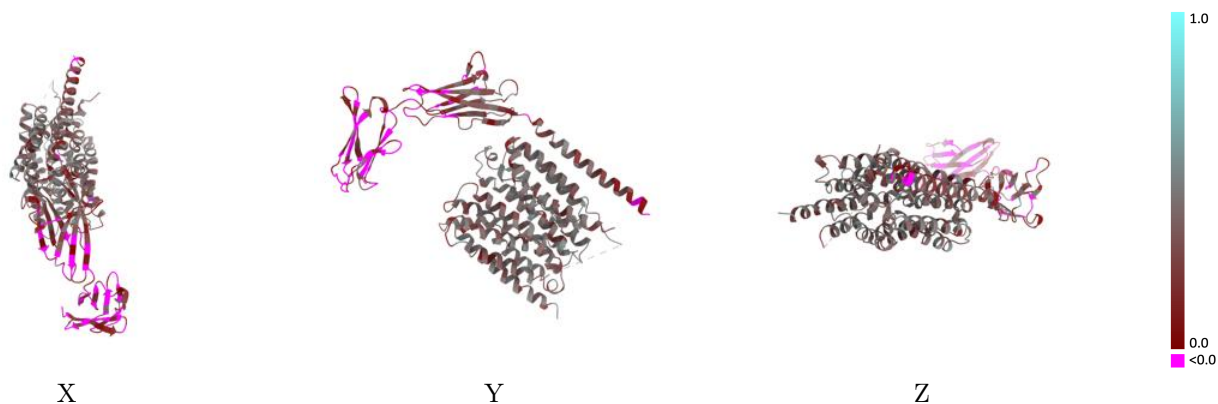
This section contains information regarding the fit between EMDB map EMD-30020 and PDB model 6LZ0. Per-residue inclusion information can be found in section 3 on page 4.

### 9.1 Map-model overlay [i](#)



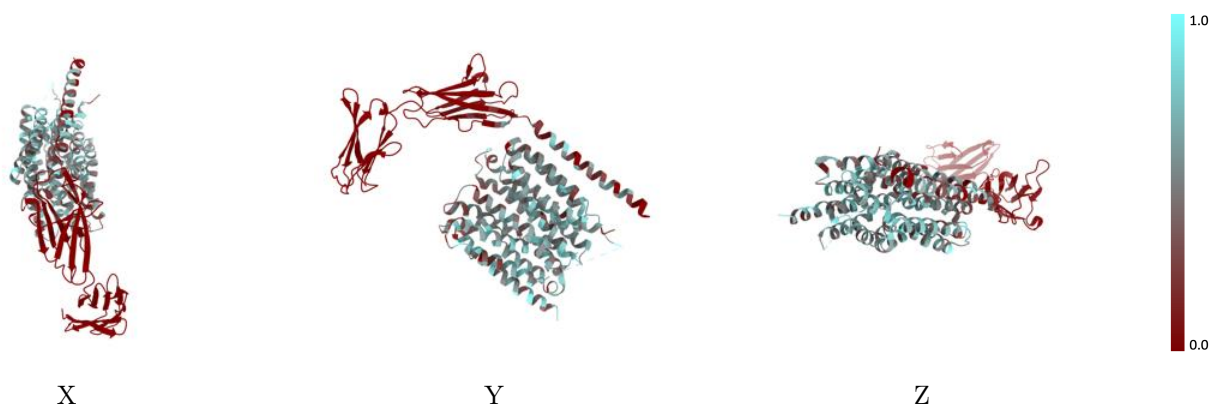
The images above show the 3D surface view of the map at the recommended contour level 0.06 at 50% transparency in yellow overlaid with a ribbon representation of the model coloured in blue. These images allow for the visual assessment of the quality of fit between the atomic model and the map.

## 9.2 Q-score mapped to coordinate model [\(i\)](#)



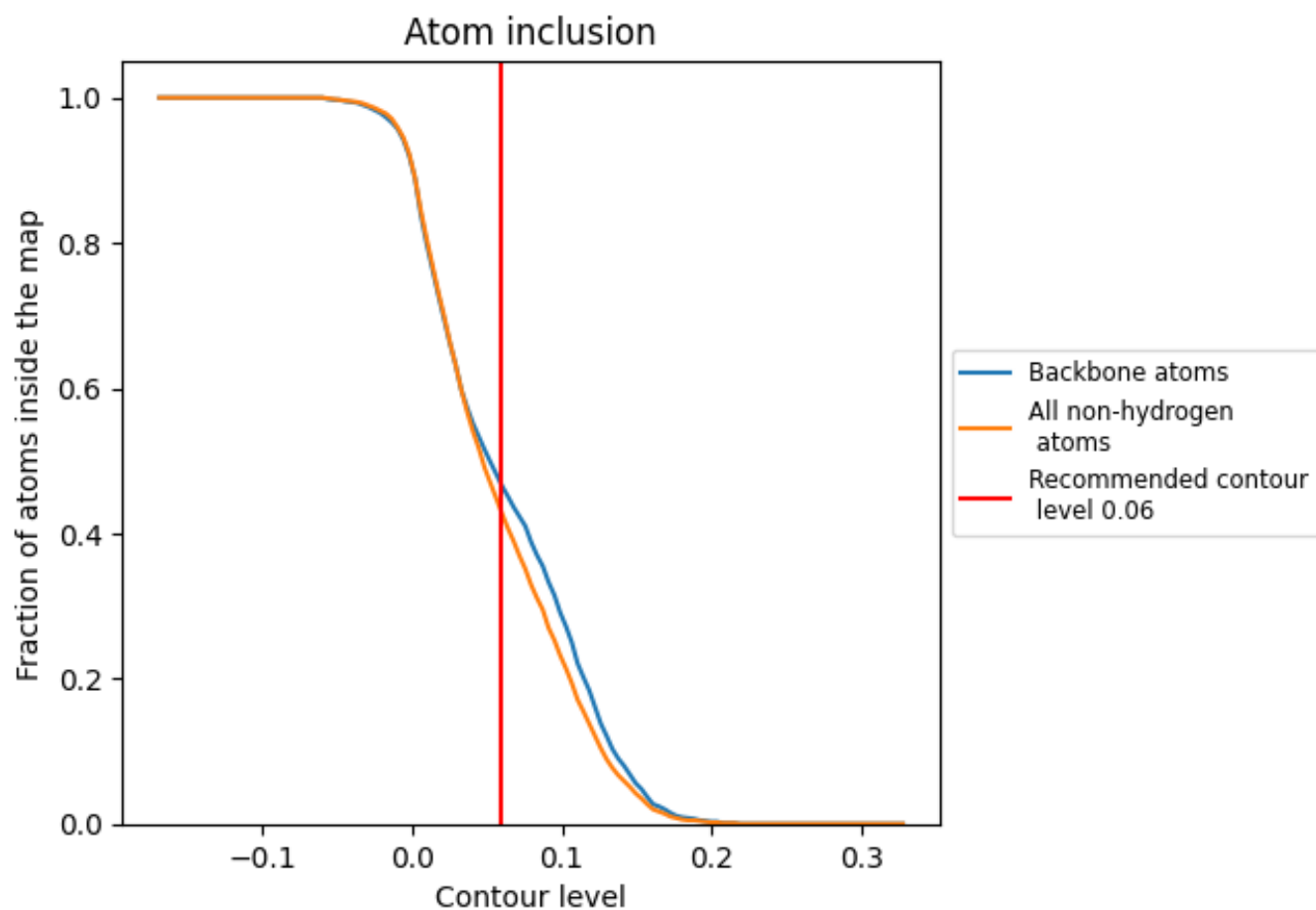
The images above show the model with each residue coloured according to its Q-score. This shows their resolvability in the map with higher Q-score values reflecting better resolvability. Please note: Q-score is calculating the resolvability of atoms, and thus high values are only expected at resolutions at which atoms can be resolved. Low Q-score values may therefore be expected for many entries.

## 9.3 Atom inclusion mapped to coordinate model [\(i\)](#)



The images above show the model with each residue coloured according to its atom inclusion. This shows to what extent they are inside the map at the recommended contour level (0.06).

## 9.4 Atom inclusion [i](#)









At the recommended contour level, 47% of all backbone atoms, 43% of all non-hydrogen atoms, are inside the map.



## 9.5 Map-model fit summary

The table lists the average atom inclusion at the recommended contour level (0.06) and Q-score for the entire model and for each chain.

Chain	Atom inclusion	Q-score
All	 0.4280	 0.3220
A	 0.5690	 0.3950
B	 0.0830	 0.1430

