



wwPDB X-ray Structure Validation Summary Report ⓘ

Nov 19, 2023 – 06:47 PM JST

PDB ID : 6LYO
Title : Crystal Structure of H296A mutant of Formylglycinamidine Synthetase
Authors : Sharma, N.; Tanwar, A.S.; Anand, R.
Deposited on : 2020-02-15
Resolution : 1.87 Å(reported)

This is a wwPDB X-ray Structure Validation Summary Report for a publicly released PDB entry.

We welcome your comments at validation@mail.wwpdb.org

A user guide is available at

<https://www.wwpdb.org/validation/2017/XrayValidationReportHelp>

with specific help available everywhere you see the ⓘ symbol.

The types of validation reports are described at

<http://www.wwpdb.org/validation/2017/FAQs#types>.

The following versions of software and data (see [references ⓘ](#)) were used in the production of this report:

MolProbity : 4.02b-467
Mogul : 1.8.5 (274361), CSD as541be (2020)
Xtriage (Phenix) : 1.13
EDS : 2.36
buster-report : 1.1.7 (2018)
Percentile statistics : 20191225.v01 (using entries in the PDB archive December 25th 2019)
Refmac : 5.8.0158
CCP4 : 7.0.044 (Gargrove)
Ideal geometry (proteins) : Engh & Huber (2001)
Ideal geometry (DNA, RNA) : Parkinson et al. (1996)
Validation Pipeline (wwPDB-VP) : 2.36

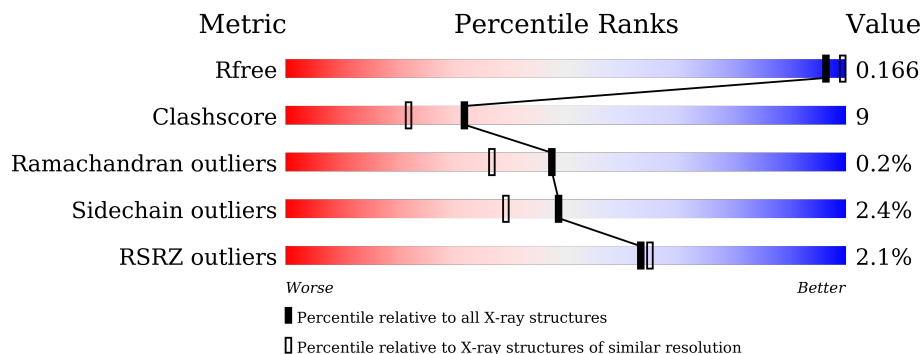
1 Overall quality at a glance

The following experimental techniques were used to determine the structure:

X-RAY DIFFRACTION

The reported resolution of this entry is 1.87 Å.

Percentile scores (ranging between 0-100) for global validation metrics of the entry are shown in the following graphic. The table shows the number of entries on which the scores are based.



Metric	Whole archive (#Entries)	Similar resolution (#Entries, resolution range(Å))
R_{free}	130704	9470 (1.90-1.86)
Clashscore	141614	10282 (1.90-1.86)
Ramachandran outliers	138981	10152 (1.90-1.86)
Sidechain outliers	138945	10152 (1.90-1.86)
RSRZ outliers	127900	9303 (1.90-1.86)

The table below summarises the geometric issues observed across the polymeric chains and their fit to the electron density. The red, orange, yellow and green segments of the lower bar indicate the fraction of residues that contain outliers for ≥ 3 , 2, 1 and 0 types of geometric quality criteria respectively. A grey segment represents the fraction of residues that are not modelled. The numeric value for each fraction is indicated below the corresponding segment, with a dot representing fractions $\leq 5\%$. The upper red bar (where present) indicates the fraction of residues that have poor fit to the electron density. The numeric value is given above the bar.

Mol	Chain	Length	Quality of chain
1	A	1304	

The following table lists non-polymeric compounds, carbohydrate monomers and non-standard residues in protein, DNA, RNA chains that are outliers for geometric or electron-density-fit criteria:

Mol	Type	Chain	Res	Chirality	Geometry	Clashes	Electron density
3	GOL	A	1307	-	-	X	-
3	GOL	A	1311	-	-	X	-

Continued on next page...

Continued from previous page...

Mol	Type	Chain	Res	Chirality	Geometry	Clashes	Electron density
3	GOL	A	1312	-	X	-	-
3	GOL	A	1313	-	-	X	-
3	GOL	A	1314	-	X	X	-
3	GOL	A	1324	-	-	X	-
3	GOL	A	1325	-	-	X	-
3	GOL	A	1335	-	-	X	-
3	GOL	A	1337	-	-	X	-
3	GOL	A	1339	-	-	X	-
5	SO4	A	1357	-	-	-	X
5	SO4	A	1358	-	-	-	X

2 Entry composition

There are 7 unique types of molecules in this entry. The entry contains 11690 atoms, of which 0 are hydrogens and 0 are deuteriums.

In the tables below, the ZeroOcc column contains the number of atoms modelled with zero occupancy, the AltConf column contains the number of residues with at least one atom in alternate conformation and the Trace column contains the number of residues modelled with at most 2 atoms.

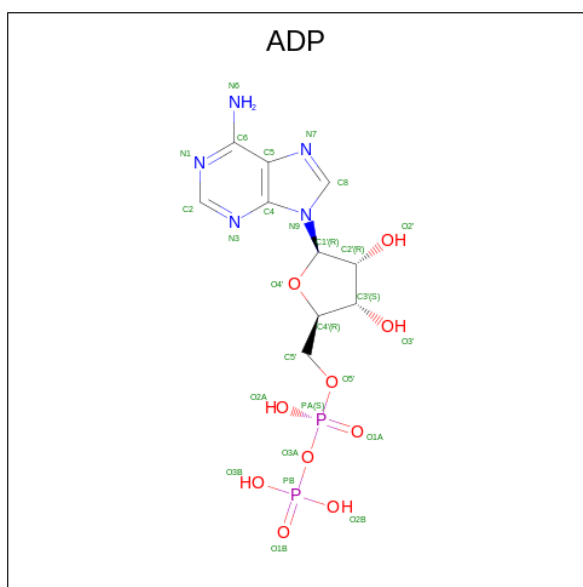
- Molecule 1 is a protein called Phosphoribosylformylglycinamide synthase.

Mol	Chain	Residues	Atoms					ZeroOcc	AltConf	Trace
			Total	C	N	O	S			
1	A	1289	10155	6391	1791	1922	51	0	43	0

There are 10 discrepancies between the modelled and reference sequences:

Chain	Residue	Modelled	Actual	Comment	Reference
A	-8	SER	-	expression tag	UNP P74881
A	-7	GLY	-	expression tag	UNP P74881
A	-6	LEU	-	expression tag	UNP P74881
A	-5	VAL	-	expression tag	UNP P74881
A	-4	PRO	-	expression tag	UNP P74881
A	-3	ARG	-	expression tag	UNP P74881
A	-2	GLY	-	expression tag	UNP P74881
A	-1	SER	-	expression tag	UNP P74881
A	0	HIS	-	expression tag	UNP P74881
A	296	ALA	HIS	engineered mutation	UNP P74881

- Molecule 2 is ADENOSINE-5'-DIPHOSPHATE (three-letter code: ADP) (formula: $C_{10}H_{15}N_5O_{10}P_2$).



Mol	Chain	Residues	Atoms					ZeroOcc	AltConf
			Total	C	N	O	P		
2	A	1	27	10	5	10	2	0	0

- Molecule 3 is GLYCEROL (three-letter code: GOL) (formula: $C_3H_8O_3$).



Mol	Chain	Residues	Atoms			ZeroOcc	AltConf
			Total	C	O		
3	A	1	6	3	3	0	0
3	A	1	6	3	3	0	0
3	A	1	6	3	3	0	0

Continued on next page...

Continued from previous page...

Mol	Chain	Residues	Atoms			ZeroOcc	AltConf
3	A	1	Total	C	O	0	0
			6	3	3		
3	A	1	Total	C	O	0	0
			6	3	3		
3	A	1	Total	C	O	0	0
			6	3	3		
3	A	1	Total	C	O	0	0
			6	3	3		
3	A	1	Total	C	O	0	0
			6	3	3		
3	A	1	Total	C	O	0	0
			6	3	3		
3	A	1	Total	C	O	0	0
			6	3	3		
3	A	1	Total	C	O	0	0
			6	3	3		
3	A	1	Total	C	O	0	0
			6	3	3		
3	A	1	Total	C	O	0	0
			6	3	3		
3	A	1	Total	C	O	0	0
			6	3	3		
3	A	1	Total	C	O	0	0
			6	3	3		
3	A	1	Total	C	O	0	0
			6	3	3		
3	A	1	Total	C	O	0	0
			6	3	3		
3	A	1	Total	C	O	0	0
			6	3	3		
3	A	1	Total	C	O	0	0
			6	3	3		

Continued on next page...

Continued from previous page...

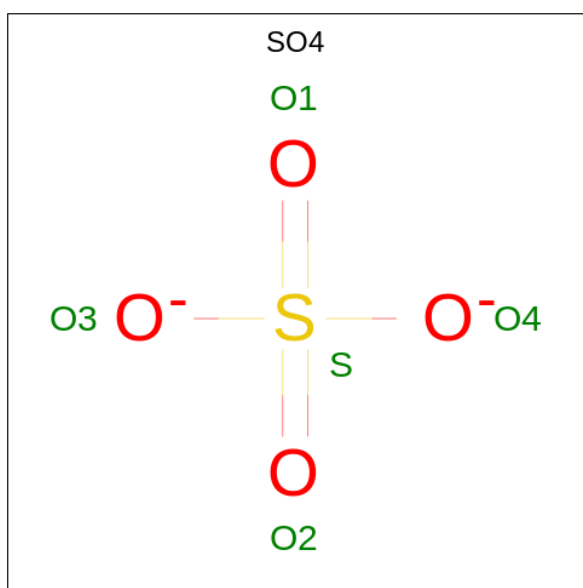
Mol	Chain	Residues	Atoms			ZeroOcc	AltConf
3	A	1	Total	C	O	0	0
			6	3	3		
3	A	1	Total	C	O	0	0
			6	3	3		
3	A	1	Total	C	O	0	0
			6	3	3		
3	A	1	Total	C	O	0	0
			6	3	3		
3	A	1	Total	C	O	0	0
			6	3	3		
3	A	1	Total	C	O	0	0
			6	3	3		
3	A	1	Total	C	O	0	0
			6	3	3		
3	A	1	Total	C	O	0	0
			6	3	3		
3	A	1	Total	C	O	0	0
			6	3	3		
3	A	1	Total	C	O	0	0
			6	3	3		
3	A	1	Total	C	O	0	0
			6	3	3		

- Molecule 4 is 1,2-ETHANEDIOL (three-letter code: EDO) (formula: C₂H₆O₂).



Mol	Chain	Residues	Atoms	ZeroOcc	AltConf
4	A	1	Total C O 4 2 2	0	0
4	A	1	Total C O 4 2 2	0	0

- Molecule 5 is SULFATE ION (three-letter code: SO₄) (formula: O₄S).



Mol	Chain	Residues	Atoms	ZeroOcc	AltConf
5	A	1	Total O S 5 4 1	0	0
5	A	1	Total O S 5 4 1	0	0

Continued on next page...

Continued from previous page...

Mol	Chain	Residues	Atoms			ZeroOcc	AltConf
5	A	1	Total	O	S	0	0
			5	4	1		
5	A	1	Total	O	S	0	0
			5	4	1		
5	A	1	Total	O	S	0	0
			5	4	1		
5	A	1	Total	O	S	0	0
			5	4	1		
5	A	1	Total	O	S	0	0
			5	4	1		
5	A	1	Total	O	S	0	0
			5	4	1		
5	A	1	Total	O	S	0	0
			5	4	1		
5	A	1	Total	O	S	0	0
			5	4	1		
5	A	1	Total	O	S	0	0
			5	4	1		
5	A	1	Total	O	S	0	0
			5	4	1		
5	A	1	Total	O	S	0	0
			5	4	1		
5	A	1	Total	O	S	0	0
			5	4	1		
5	A	1	Total	O	S	0	0
			5	4	1		
5	A	1	Total	O	S	0	0
			5	4	1		

- Molecule 6 is MAGNESIUM ION (three-letter code: MG) (formula: Mg).

Mol	Chain	Residues	Atoms		ZeroOcc	AltConf
6	A	3	Total	Mg	0	0
			3	3		

- Molecule 7 is water.

Mol	Chain	Residues	Atoms		ZeroOcc	AltConf
7	A	1175	Total 1175	O 1175	0	0

3 Residue-property plots

These plots are drawn for all protein, RNA, DNA and oligosaccharide chains in the entry. The first graphic for a chain summarises the proportions of the various outlier classes displayed in the second graphic. The second graphic shows the sequence view annotated by issues in geometry and electron density. Residues are color-coded according to the number of geometric quality criteria for which they contain at least one outlier: green = 0, yellow = 1, orange = 2 and red = 3 or more. A red dot above a residue indicates a poor fit to the electron density ($RSRZ > 2$). Stretches of 2 or more consecutive residues without any outlier are shown as a green connector. Residues present in the sample, but not in the model, are shown in grey.

- Molecule 1: Phosphoribosylformylglycinamide synthase



4 Data and refinement statistics

Property	Value	Source
Space group	P 65	Depositor
Cell constants a, b, c, α , β , γ	146.29Å 146.29Å 140.96Å 90.00° 90.00° 120.00°	Depositor
Resolution (Å)	47.88 – 1.87 31.45 – 1.87	Depositor EDS
% Data completeness (in resolution range)	99.7 (47.88-1.87) 99.7 (31.45-1.87)	Depositor EDS
R_{merge}	(Not available)	Depositor
R_{sym}	(Not available)	Depositor
$\langle I/\sigma(I) \rangle$ ¹	4.79 (at 1.87Å)	Xtrriage
Refinement program	REFMAC 5.8.0135	Depositor
R, R_{free}	0.125 , 0.158 0.139 , 0.166	Depositor DCC
R_{free} test set	6697 reflections (4.77%)	wwPDB-VP
Wilson B-factor (Å ²)	17.9	Xtrriage
Anisotropy	0.019	Xtrriage
Bulk solvent k_{sol} (e/Å ³), B_{sol} (Å ²)	0.38 , 49.3	EDS
L-test for twinning ²	$\langle L \rangle = 0.51$, $\langle L^2 \rangle = 0.35$	Xtrriage
Estimated twinning fraction	0.021 for h,-h-k,-l	Xtrriage
F_o, F_c correlation	0.97	EDS
Total number of atoms	11690	wwPDB-VP
Average B, all atoms (Å ²)	21.0	wwPDB-VP

Xtrriage's analysis on translational NCS is as follows: *The largest off-origin peak in the Patterson function is 2.36% of the height of the origin peak. No significant pseudotranslation is detected.*

¹Intensities estimated from amplitudes.

²Theoretical values of $\langle |L| \rangle$, $\langle L^2 \rangle$ for acentric reflections are 0.5, 0.333 respectively for untwinned datasets, and 0.375, 0.2 for perfectly twinned datasets.

5 Model quality [i](#)

5.1 Standard geometry [i](#)

Bond lengths and bond angles in the following residue types are not validated in this section: CYG, ADP, GOL, SO4, EDO, MG

The Z score for a bond length (or angle) is the number of standard deviations the observed value is removed from the expected value. A bond length (or angle) with $|Z| > 5$ is considered an outlier worth inspection. RMSZ is the root-mean-square of all Z scores of the bond lengths (or angles).

Mol	Chain	Bond lengths		Bond angles	
		RMSZ	# Z >5	RMSZ	# Z >5
1	A	1.08	6/10462 (0.1%)	1.01	11/14202 (0.1%)

The worst 5 of 6 bond length outliers are listed below:

Mol	Chain	Res	Type	Atoms	Z	Observed(Å)	Ideal(Å)
1	A	1119	GLU	CD-OE2	-7.08	1.17	1.25
1	A	403	GLU	CD-OE1	-6.96	1.18	1.25
1	A	1119	GLU	CD-OE1	-5.45	1.19	1.25
1	A	1250	GLU	CD-OE2	-5.27	1.19	1.25
1	A	1088[A]	LEU	CA-C	5.17	1.66	1.52

The worst 5 of 11 bond angle outliers are listed below:

Mol	Chain	Res	Type	Atoms	Z	Observed(°)	Ideal(°)
1	A	6	ARG	NE-CZ-NH1	-11.06	114.77	120.30
1	A	1156	ARG	NE-CZ-NH2	-9.65	115.47	120.30
1	A	6	ARG	NE-CZ-NH2	8.64	124.62	120.30
1	A	502	ASP	CB-CG-OD2	-8.41	110.73	118.30
1	A	358	ARG	NE-CZ-NH1	7.13	123.87	120.30

There are no chirality outliers.

There are no planarity outliers.

5.2 Too-close contacts [i](#)

In the following table, the Non-H and H(model) columns list the number of non-hydrogen atoms and hydrogen atoms in the chain respectively. The H(added) column lists the number of hydrogen atoms added and optimized by MolProbity. The Clashes column lists the number of clashes within the asymmetric unit, whereas Symm-Clashes lists symmetry-related clashes.

Mol	Chain	Non-H	H(model)	H(added)	Clashes	Symm-Clashes
1	A	10155	0	10027	163	0
2	A	27	0	12	0	0
3	A	222	0	292	75	0
4	A	8	0	12	1	0
5	A	100	0	0	1	0
6	A	3	0	0	0	0
7	A	1175	0	0	54	0
All	All	11690	0	10343	185	0

The all-atom clashscore is defined as the number of clashes found per 1000 atoms (including hydrogen atoms). The all-atom clashscore for this structure is 9.

The worst 5 of 185 close contacts within the same asymmetric unit are listed below, sorted by their clash magnitude.

Atom-1	Atom-2	Interatomic distance (Å)	Clash overlap (Å)
1:A:950:ASP:HB3	3:A:1339:GOL:O1	1.50	1.08
1:A:192:GLU:OE2	3:A:1331:GOL:H12	1.52	1.08
1:A:402:GLU:HG2	7:A:2375:HOH:O	1.54	1.06
1:A:251:TYR:H	3:A:1313:GOL:H12	1.20	1.02
3:A:1332:GOL:H12	7:A:2275:HOH:O	1.63	0.98

There are no symmetry-related clashes.

5.3 Torsion angles [i](#)

5.3.1 Protein backbone [i](#)

In the following table, the Percentiles column shows the percent Ramachandran outliers of the chain as a percentile score with respect to all X-ray entries followed by that with respect to entries of similar resolution.

The Analysed column shows the number of residues for which the backbone conformation was analysed, and the total number of residues.

Mol	Chain	Analysed	Favoured	Allowed	Outliers	Percentiles
1	A	1326/1304 (102%)	1289 (97%)	34 (3%)	3 (0%)	47 37

All (3) Ramachandran outliers are listed below:

Mol	Chain	Res	Type
1	A	465	LEU

Continued on next page...

Continued from previous page...

Mol	Chain	Res	Type
1	A	661	THR
1	A	886	SER

5.3.2 Protein sidechains [i](#)

In the following table, the Percentiles column shows the percent sidechain outliers of the chain as a percentile score with respect to all X-ray entries followed by that with respect to entries of similar resolution.

The Analysed column shows the number of residues for which the sidechain conformation was analysed, and the total number of residues.

Mol	Chain	Analysed	Rotameric	Outliers	Percentiles
1	A	1072/1040 (103%)	1043 (97%)	29 (3%)	44 34

5 of 29 residues with a non-rotameric sidechain are listed below:

Mol	Chain	Res	Type
1	A	465	LEU
1	A	1279[A]	GLU
1	A	611	LYS
1	A	1190	MET
1	A	571	ARG

Sometimes sidechains can be flipped to improve hydrogen bonding and reduce clashes. 5 of 39 such sidechains are listed below:

Mol	Chain	Res	Type
1	A	930	GLN
1	A	1113	ASN
1	A	993	GLN
1	A	1018	ASN
1	A	1251	ASN

5.3.3 RNA [i](#)

There are no RNA molecules in this entry.

5.4 Non-standard residues in protein, DNA, RNA chains [i](#)

1 non-standard protein/DNA/RNA residue is modelled in this entry.

In the following table, the Counts columns list the number of bonds (or angles) for which Mogul statistics could be retrieved, the number of bonds (or angles) that are observed in the model and the number of bonds (or angles) that are defined in the Chemical Component Dictionary. The Link column lists molecule types, if any, to which the group is linked. The Z score for a bond length (or angle) is the number of standard deviations the observed value is removed from the expected value. A bond length (or angle) with $|Z| > 2$ is considered an outlier worth inspection. RMSZ is the root-mean-square of all Z scores of the bond lengths (or angles).

Mol	Type	Chain	Res	Link	Bond lengths			Bond angles		
					Counts	RMSZ	# Z > 2	Counts	RMSZ	# Z > 2
1	CYG	A	1135	1	12,14,15	2.09	4 (33%)	11,17,19	3.48	4 (36%)

In the following table, the Chirals column lists the number of chiral outliers, the number of chiral centers analysed, the number of these observed in the model and the number defined in the Chemical Component Dictionary. Similar counts are reported in the Torsion and Rings columns. '-' means no outliers of that kind were identified.

Mol	Type	Chain	Res	Link	Chirals	Torsions	Rings
1	CYG	A	1135	1	-	0/14/16/18	-

All (4) bond length outliers are listed below:

Mol	Chain	Res	Type	Atoms	Z	Observed(Å)	Ideal(Å)
1	A	1135	CYG	CG1-CD1	4.72	1.55	1.50
1	A	1135	CYG	OE2-CD1	3.20	1.26	1.21
1	A	1135	CYG	CD1-SG	2.90	1.83	1.76
1	A	1135	CYG	CB-CA	-2.00	1.48	1.53

All (4) bond angle outliers are listed below:

Mol	Chain	Res	Type	Atoms	Z	Observed(°)	Ideal(°)
1	A	1135	CYG	OE2-CD1-CG1	-8.57	113.86	123.99
1	A	1135	CYG	CG1-CD1-SG	5.09	119.38	113.46
1	A	1135	CYG	CB1-CG1-CD1	-4.67	101.98	112.33
1	A	1135	CYG	OE2-CD1-SG	2.78	126.23	122.61

There are no chirality outliers.

There are no torsion outliers.

There are no ring outliers.

No monomer is involved in short contacts.

5.5 Carbohydrates [i](#)

There are no monosaccharides in this entry.

5.6 Ligand geometry [i](#)

Of 63 ligands modelled in this entry, 3 are monoatomic - leaving 60 for Mogul analysis.

In the following table, the Counts columns list the number of bonds (or angles) for which Mogul statistics could be retrieved, the number of bonds (or angles) that are observed in the model and the number of bonds (or angles) that are defined in the Chemical Component Dictionary. The Link column lists molecule types, if any, to which the group is linked. The Z score for a bond length (or angle) is the number of standard deviations the observed value is removed from the expected value. A bond length (or angle) with $|Z| > 2$ is considered an outlier worth inspection. RMSZ is the root-mean-square of all Z scores of the bond lengths (or angles).

Mol	Type	Chain	Res	Link	Bond lengths			Bond angles		
					Counts	RMSZ	# Z > 2	Counts	RMSZ	# Z > 2
3	GOL	A	1310	-	5,5,5	0.76	0	5,5,5	0.85	0
3	GOL	A	1320	-	5,5,5	0.29	0	5,5,5	1.16	1 (20%)
3	GOL	A	1333	-	5,5,5	0.27	0	5,5,5	1.18	0
5	SO4	A	1347	-	4,4,4	1.06	0	6,6,6	1.17	1 (16%)
3	GOL	A	1332	-	5,5,5	0.75	0	5,5,5	1.27	1 (20%)
3	GOL	A	1336	-	5,5,5	0.41	0	5,5,5	0.99	0
3	GOL	A	1325	-	5,5,5	0.52	0	5,5,5	0.98	0
3	GOL	A	1331	-	5,5,5	0.43	0	5,5,5	0.34	0
5	SO4	A	1342	-	4,4,4	0.39	0	6,6,6	0.84	0
5	SO4	A	1354	-	4,4,4	0.53	0	6,6,6	0.33	0
3	GOL	A	1309	-	5,5,5	0.68	0	5,5,5	0.91	0
3	GOL	A	1328	-	5,5,5	0.84	0	5,5,5	0.98	0
4	EDO	A	1338	-	3,3,3	0.29	0	2,2,2	0.96	0
5	SO4	A	1350	-	4,4,4	0.64	0	6,6,6	0.72	0
5	SO4	A	1348	-	4,4,4	0.33	0	6,6,6	0.43	0
4	EDO	A	1340	-	3,3,3	0.40	0	2,2,2	0.32	0
3	GOL	A	1318	-	5,5,5	0.71	0	5,5,5	0.74	0
3	GOL	A	1312	-	5,5,5	1.51	1 (20%)	5,5,5	2.30	2 (40%)
3	GOL	A	1334	-	5,5,5	0.41	0	5,5,5	0.96	0
5	SO4	A	1343	-	4,4,4	0.72	0	6,6,6	1.55	2 (33%)
3	GOL	A	1317	-	5,5,5	0.71	0	5,5,5	0.54	0
5	SO4	A	1351	-	4,4,4	0.77	0	6,6,6	1.31	0
3	GOL	A	1337	-	5,5,5	0.39	0	5,5,5	0.76	0
3	GOL	A	1314	-	5,5,5	1.55	1 (20%)	5,5,5	2.87	2 (40%)
3	GOL	A	1319	-	5,5,5	0.57	0	5,5,5	0.57	0
3	GOL	A	1307	-	5,5,5	0.47	0	5,5,5	0.57	0

Mol	Type	Chain	Res	Link	Bond lengths			Bond angles		
					Counts	RMSZ	# Z > 2	Counts	RMSZ	# Z > 2
3	GOL	A	1326	-	5,5,5	0.90	0	5,5,5	1.05	0
3	GOL	A	1308	-	5,5,5	1.21	1 (20%)	5,5,5	1.42	1 (20%)
3	GOL	A	1330	-	5,5,5	0.68	0	5,5,5	1.19	1 (20%)
3	GOL	A	1335	-	5,5,5	0.62	0	5,5,5	0.76	0
3	GOL	A	1329	-	5,5,5	0.36	0	5,5,5	0.51	0
5	SO4	A	1346	-	4,4,4	0.95	0	6,6,6	1.59	1 (16%)
5	SO4	A	1359	-	4,4,4	0.47	0	6,6,6	0.28	0
5	SO4	A	1356	-	4,4,4	0.58	0	6,6,6	0.48	0
5	SO4	A	1349	-	4,4,4	0.54	0	6,6,6	0.88	0
5	SO4	A	1353	-	4,4,4	0.39	0	6,6,6	0.35	0
2	ADP	A	1301	6	24,29,29	0.98	2 (8%)	29,45,45	1.09	4 (13%)
3	GOL	A	1302	-	5,5,5	0.83	0	5,5,5	0.65	0
3	GOL	A	1321	-	5,5,5	0.85	0	5,5,5	1.18	0
3	GOL	A	1327	-	5,5,5	0.36	0	5,5,5	0.36	0
5	SO4	A	1357	-	4,4,4	0.54	0	6,6,6	0.27	0
3	GOL	A	1305	-	5,5,5	1.05	0	5,5,5	1.62	1 (20%)
3	GOL	A	1306	-	5,5,5	0.99	0	5,5,5	0.80	0
5	SO4	A	1360	-	4,4,4	0.61	0	6,6,6	1.03	0
3	GOL	A	1313	-	5,5,5	0.48	0	5,5,5	0.71	0
3	GOL	A	1311	-	5,5,5	0.53	0	5,5,5	1.05	0
3	GOL	A	1339	-	5,5,5	0.29	0	5,5,5	0.97	0
3	GOL	A	1303	-	5,5,5	0.51	0	5,5,5	1.25	0
5	SO4	A	1355	-	4,4,4	0.45	0	6,6,6	0.56	0
3	GOL	A	1315	-	5,5,5	0.67	0	5,5,5	1.16	0
5	SO4	A	1341	-	4,4,4	0.57	0	6,6,6	1.08	0
5	SO4	A	1344	-	4,4,4	0.60	0	6,6,6	1.28	1 (16%)
5	SO4	A	1358	-	4,4,4	0.52	0	6,6,6	0.64	0
3	GOL	A	1323	-	5,5,5	0.21	0	5,5,5	0.58	0
3	GOL	A	1316	-	5,5,5	0.64	0	5,5,5	1.21	0
5	SO4	A	1345	-	4,4,4	0.19	0	6,6,6	0.66	0
3	GOL	A	1322	-	5,5,5	0.54	0	5,5,5	1.15	1 (20%)
3	GOL	A	1324	-	5,5,5	0.39	0	5,5,5	0.72	0
5	SO4	A	1352	-	4,4,4	0.80	0	6,6,6	0.33	0
3	GOL	A	1304	-	5,5,5	1.14	0	5,5,5	1.33	0

In the following table, the Chirals column lists the number of chiral outliers, the number of chiral centers analysed, the number of these observed in the model and the number defined in the Chemical Component Dictionary. Similar counts are reported in the Torsion and Rings columns. '-' means no outliers of that kind were identified.

Mol	Type	Chain	Res	Link	Chirals	Torsions	Rings
3	GOL	A	1310	-	-	2/4/4/4	-
3	GOL	A	1320	-	-	2/4/4/4	-
3	GOL	A	1333	-	-	3/4/4/4	-
3	GOL	A	1332	-	-	2/4/4/4	-
3	GOL	A	1336	-	-	1/4/4/4	-
3	GOL	A	1325	-	-	0/4/4/4	-
3	GOL	A	1331	-	-	4/4/4/4	-
3	GOL	A	1309	-	-	0/4/4/4	-
3	GOL	A	1328	-	-	4/4/4/4	-
4	EDO	A	1338	-	-	1/1/1/1	-
4	EDO	A	1340	-	-	1/1/1/1	-
3	GOL	A	1318	-	-	2/4/4/4	-
3	GOL	A	1312	-	-	3/4/4/4	-
3	GOL	A	1334	-	-	4/4/4/4	-
3	GOL	A	1317	-	-	2/4/4/4	-
3	GOL	A	1337	-	-	3/4/4/4	-
3	GOL	A	1314	-	-	4/4/4/4	-
3	GOL	A	1319	-	-	0/4/4/4	-
3	GOL	A	1307	-	-	3/4/4/4	-
3	GOL	A	1326	-	-	2/4/4/4	-
3	GOL	A	1308	-	-	3/4/4/4	-
3	GOL	A	1330	-	-	2/4/4/4	-
3	GOL	A	1335	-	-	0/4/4/4	-
3	GOL	A	1329	-	-	0/4/4/4	-
2	ADP	A	1301	6	-	2/12/32/32	0/3/3/3
3	GOL	A	1302	-	-	0/4/4/4	-
3	GOL	A	1321	-	-	4/4/4/4	-
3	GOL	A	1327	-	-	0/4/4/4	-
3	GOL	A	1305	-	-	2/4/4/4	-
3	GOL	A	1306	-	-	0/4/4/4	-
3	GOL	A	1313	-	-	2/4/4/4	-
3	GOL	A	1311	-	-	2/4/4/4	-
3	GOL	A	1339	-	-	2/4/4/4	-
3	GOL	A	1303	-	-	2/4/4/4	-
3	GOL	A	1315	-	-	4/4/4/4	-
3	GOL	A	1323	-	-	2/4/4/4	-
3	GOL	A	1316	-	-	1/4/4/4	-

Continued on next page...

Continued from previous page...

Mol	Type	Chain	Res	Link	Chirals	Torsions	Rings
3	GOL	A	1322	-	-	2/4/4/4	-
3	GOL	A	1324	-	-	2/4/4/4	-
3	GOL	A	1304	-	-	2/4/4/4	-

All (5) bond length outliers are listed below:

Mol	Chain	Res	Type	Atoms	Z	Observed(Å)	Ideal(Å)
2	A	1301	ADP	O4'-C1'	2.71	1.44	1.41
2	A	1301	ADP	O3'-C3'	2.48	1.48	1.43
3	A	1312	GOL	O1-C1	2.36	1.52	1.42
3	A	1314	GOL	O3-C3	2.07	1.51	1.42
3	A	1308	GOL	O1-C1	-2.02	1.33	1.42

The worst 5 of 19 bond angle outliers are listed below:

Mol	Chain	Res	Type	Atoms	Z	Observed(°)	Ideal(°)
3	A	1314	GOL	O3-C3-C2	5.64	137.26	110.20
3	A	1312	GOL	O2-C2-C1	4.01	126.77	109.12
5	A	1346	SO4	O3-S-O1	2.87	124.28	109.31
3	A	1305	GOL	O2-C2-C1	-2.58	97.77	109.12
2	A	1301	ADP	O3B-PB-O2B	2.56	117.42	107.64

There are no chirality outliers.

5 of 77 torsion outliers are listed below:

Mol	Chain	Res	Type	Atoms
2	A	1301	ADP	PA-O3A-PB-O2B
3	A	1307	GOL	C1-C2-C3-O3
3	A	1308	GOL	C1-C2-C3-O3
3	A	1310	GOL	C1-C2-C3-O3
3	A	1311	GOL	O1-C1-C2-C3

There are no ring outliers.

24 monomers are involved in 77 short contacts:

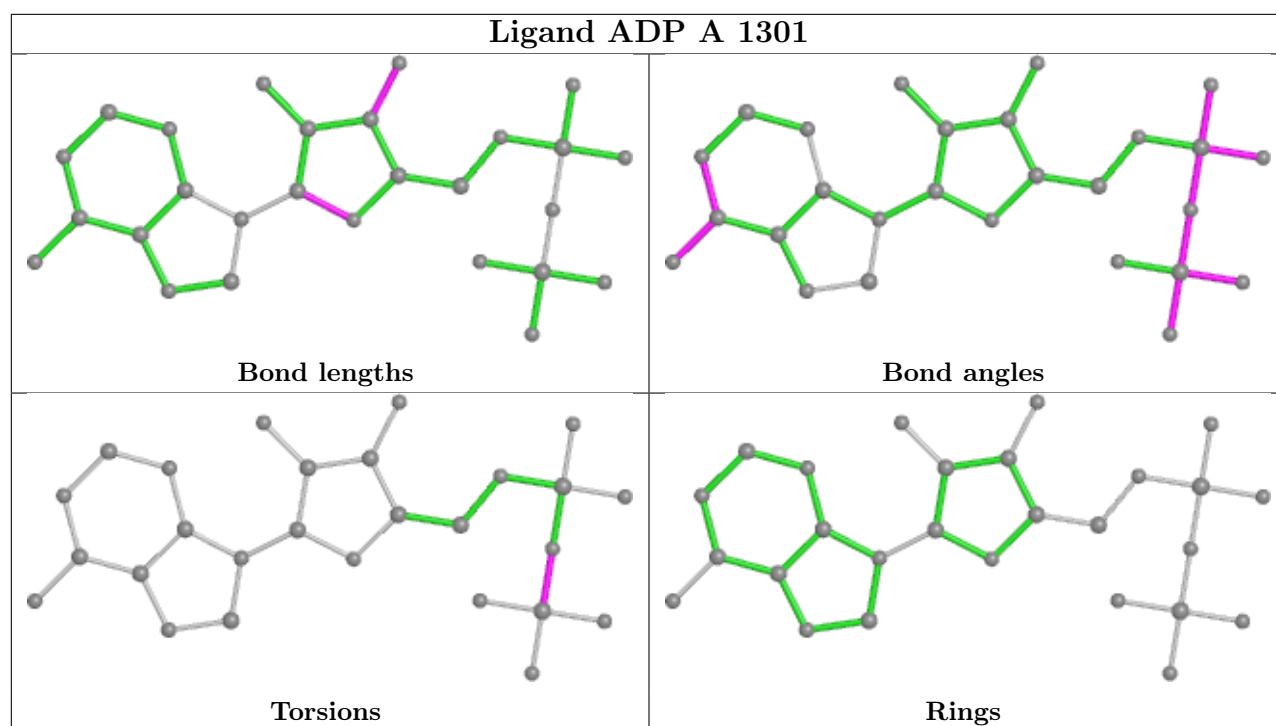
Mol	Chain	Res	Type	Clashes	Symm-Clashes
3	A	1310	GOL	1	0
3	A	1333	GOL	1	0
3	A	1332	GOL	3	0
3	A	1325	GOL	6	0

Continued on next page...

Continued from previous page...

Mol	Chain	Res	Type	Clashes	Symm-Clashes
3	A	1331	GOL	1	0
3	A	1309	GOL	3	0
4	A	1340	EDO	1	0
3	A	1312	GOL	1	0
3	A	1334	GOL	3	0
3	A	1317	GOL	2	0
5	A	1351	SO4	1	0
3	A	1337	GOL	4	0
3	A	1314	GOL	4	0
3	A	1307	GOL	8	0
3	A	1326	GOL	2	0
3	A	1308	GOL	3	0
3	A	1335	GOL	6	0
3	A	1329	GOL	3	0
3	A	1321	GOL	1	0
3	A	1313	GOL	4	0
3	A	1311	GOL	5	0
3	A	1339	GOL	7	0
3	A	1323	GOL	2	0
3	A	1324	GOL	8	0

The following is a two-dimensional graphical depiction of Mogul quality analysis of bond lengths, bond angles, torsion angles, and ring geometry for all instances of the Ligand of Interest. In addition, ligands with molecular weight > 250 and outliers as shown on the validation Tables will also be included. For torsion angles, if less than 5% of the Mogul distribution of torsion angles is within 10 degrees of the torsion angle in question, then that torsion angle is considered an outlier. Any bond that is central to one or more torsion angles identified as an outlier by Mogul will be highlighted in the graph. For rings, the root-mean-square deviation (RMSD) between the ring in question and similar rings identified by Mogul is calculated over all ring torsion angles. If the average RMSD is greater than 60 degrees and the minimal RMSD between the ring in question and any Mogul-identified rings is also greater than 60 degrees, then that ring is considered an outlier. The outliers are highlighted in purple. The color gray indicates Mogul did not find sufficient equivalents in the CSD to analyse the geometry.



5.7 Other polymers [i](#)

There are no such residues in this entry.

5.8 Polymer linkage issues [i](#)

There are no chain breaks in this entry.

6 Fit of model and data [i](#)

6.1 Protein, DNA and RNA chains [i](#)

In the following table, the column labelled '#RSRZ > 2' contains the number (and percentage) of RSRZ outliers, followed by percent RSRZ outliers for the chain as percentile scores relative to all X-ray entries and entries of similar resolution. The OWAB column contains the minimum, median, 95th percentile and maximum values of the occupancy-weighted average B-factor per residue. The column labelled 'Q < 0.9' lists the number of (and percentage) of residues with an average occupancy less than 0.9.

Mol	Chain	Analysed	<RSRZ>	#RSRZ>2	OWAB(Å ²)	Q<0.9
1	A	1288/1304 (98%)	-0.42	27 (2%) 63 65	11, 17, 38, 84	0

The worst 5 of 27 RSRZ outliers are listed below:

Mol	Chain	Res	Type	RSRZ
1	A	464	ASP	6.4
1	A	789	ASN	6.0
1	A	118	THR	4.5
1	A	465	LEU	4.0
1	A	117	SER	3.7

6.2 Non-standard residues in protein, DNA, RNA chains [i](#)

In the following table, the Atoms column lists the number of modelled atoms in the group and the number defined in the chemical component dictionary. The B-factors column lists the minimum, median, 95th percentile and maximum values of B factors of atoms in the group. The column labelled 'Q < 0.9' lists the number of atoms with occupancy less than 0.9.

Mol	Type	Chain	Res	Atoms	RSCC	RSR	B-factors(Å ²)	Q<0.9
1	CYG	A	1135	15/16	0.98	0.08	10,12,15,20	0

6.3 Carbohydrates [i](#)

There are no monosaccharides in this entry.

6.4 Ligands [i](#)

In the following table, the Atoms column lists the number of modelled atoms in the group and the number defined in the chemical component dictionary. The B-factors column lists the minimum,

median, 95th percentile and maximum values of B factors of atoms in the group. The column labelled 'Q< 0.9' lists the number of atoms with occupancy less than 0.9.

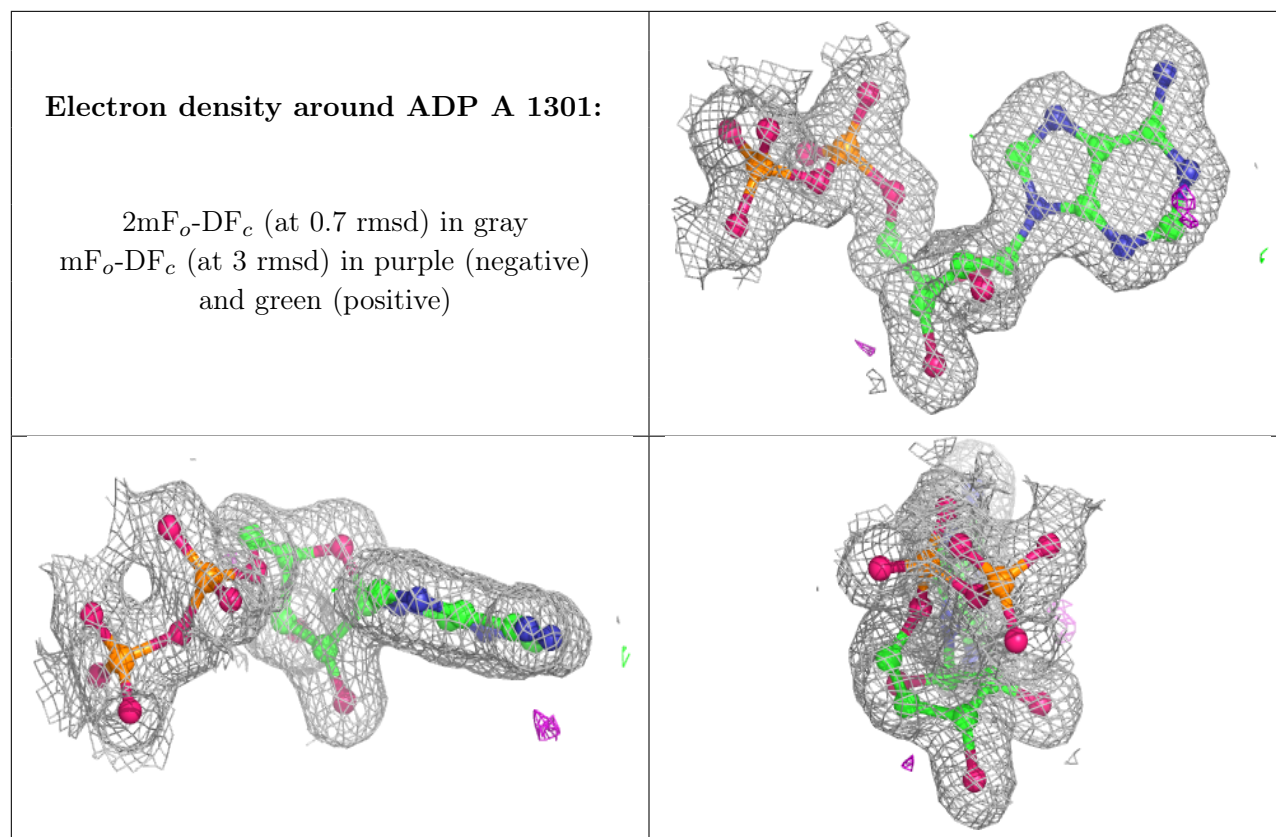
Mol	Type	Chain	Res	Atoms	RSCC	RSR	B-factors(Å ²)	Q<0.9
3	GOL	A	1323	6/6	0.61	0.26	56,67,71,72	0
3	GOL	A	1327	6/6	0.67	0.23	56,60,62,66	0
3	GOL	A	1329	6/6	0.72	0.18	49,57,62,63	0
3	GOL	A	1337	6/6	0.72	0.33	46,48,56,64	0
5	SO4	A	1358	5/5	0.72	0.40	68,73,97,98	0
3	GOL	A	1311	6/6	0.74	0.22	45,50,54,55	0
3	GOL	A	1320	6/6	0.76	0.40	60,62,63,70	0
5	SO4	A	1357	5/5	0.77	0.40	69,72,95,100	0
3	GOL	A	1326	6/6	0.77	0.26	48,51,53,53	0
3	GOL	A	1333	6/6	0.78	0.30	38,55,60,61	0
3	GOL	A	1322	6/6	0.80	0.20	47,50,55,57	0
3	GOL	A	1325	6/6	0.81	0.15	55,60,66,67	0
3	GOL	A	1339	6/6	0.81	0.36	46,51,57,65	0
3	GOL	A	1324	6/6	0.82	0.17	47,61,66,68	0
4	EDO	A	1340	4/4	0.83	0.13	56,57,57,59	0
3	GOL	A	1307	6/6	0.84	0.24	32,35,53,54	0
3	GOL	A	1313	6/6	0.84	0.17	38,43,45,52	0
5	SO4	A	1354	5/5	0.85	0.27	74,76,95,97	0
3	GOL	A	1315	6/6	0.85	0.13	31,40,42,43	0
3	GOL	A	1332	6/6	0.85	0.24	38,51,54,57	0
3	GOL	A	1319	6/6	0.86	0.14	43,48,53,54	0
3	GOL	A	1312	6/6	0.87	0.13	33,40,45,46	0
3	GOL	A	1310	6/6	0.88	0.25	45,48,62,77	0
3	GOL	A	1308	6/6	0.88	0.30	24,40,44,46	0
3	GOL	A	1335	6/6	0.89	0.34	49,60,74,77	0
3	GOL	A	1314	6/6	0.89	0.19	27,31,34,35	0
3	GOL	A	1328	6/6	0.89	0.14	26,54,54,56	0
3	GOL	A	1316	6/6	0.89	0.17	32,41,49,49	0
3	GOL	A	1321	6/6	0.89	0.19	28,46,50,50	0
3	GOL	A	1318	6/6	0.89	0.27	38,46,51,52	0
3	GOL	A	1334	6/6	0.89	0.25	30,44,49,59	0
5	SO4	A	1359	5/5	0.89	0.23	60,73,91,92	0
3	GOL	A	1330	6/6	0.90	0.17	36,54,57,57	0
3	GOL	A	1331	6/6	0.90	0.34	51,64,70,78	0
3	GOL	A	1309	6/6	0.90	0.11	26,31,33,35	0
5	SO4	A	1351	5/5	0.90	0.14	31,43,52,54	0
5	SO4	A	1360	5/5	0.90	0.41	68,71,80,85	0
3	GOL	A	1336	6/6	0.91	0.20	31,44,45,47	0
5	SO4	A	1355	5/5	0.91	0.41	61,79,79,80	0
3	GOL	A	1305	6/6	0.92	0.11	24,38,40,41	0
3	GOL	A	1302	6/6	0.93	0.12	30,32,34,35	0

Continued on next page...

Continued from previous page...

Mol	Type	Chain	Res	Atoms	RSCC	RSR	B-factors(\AA^2)	Q<0.9
5	SO4	A	1353	5/5	0.93	0.26	74,75,82,86	0
4	EDO	A	1338	4/4	0.93	0.29	43,43,47,50	0
3	GOL	A	1317	6/6	0.93	0.19	34,50,52,62	0
5	SO4	A	1356	5/5	0.94	0.34	66,70,75,85	0
5	SO4	A	1352	5/5	0.95	0.34	38,48,51,54	0
5	SO4	A	1347	5/5	0.95	0.22	22,27,38,38	0
3	GOL	A	1306	6/6	0.95	0.10	21,23,24,27	0
3	GOL	A	1303	6/6	0.96	0.11	14,20,25,32	0
5	SO4	A	1349	5/5	0.96	0.17	32,34,42,49	0
3	GOL	A	1304	6/6	0.96	0.08	17,21,26,29	0
5	SO4	A	1350	5/5	0.97	0.28	45,46,51,54	0
5	SO4	A	1344	5/5	0.98	0.11	30,33,38,42	0
5	SO4	A	1348	5/5	0.98	0.22	38,42,45,49	0
5	SO4	A	1343	5/5	0.99	0.10	29,32,33,42	0
2	ADP	A	1301	27/27	0.99	0.06	10,11,12,12	0
5	SO4	A	1345	5/5	0.99	0.14	26,33,39,40	0
5	SO4	A	1346	5/5	0.99	0.10	24,31,35,40	0
5	SO4	A	1341	5/5	0.99	0.04	18,18,20,22	0
5	SO4	A	1342	5/5	0.99	0.07	23,25,27,29	0
6	MG	A	1362	1/1	0.99	0.06	11,11,11,11	0
6	MG	A	1361	1/1	1.00	0.04	11,11,11,11	0
6	MG	A	1363	1/1	1.00	0.08	12,12,12,12	0

The following is a graphical depiction of the model fit to experimental electron density of all instances of the Ligand of Interest. In addition, ligands with molecular weight > 250 and outliers as shown on the geometry validation Tables will also be included. Each fit is shown from different orientation to approximate a three-dimensional view.



6.5 Other polymers [i](#)

There are no such residues in this entry.