



# Full wwPDB X-ray Structure Validation Report ⓘ

Aug 29, 2023 – 06:36 AM EDT

PDB ID : 3LSB  
Title : Crystal structure of the mutant E241Q of atrazine chlorohydrolase TrzN from *Arthrobacter aureus* TC1 complexed with zinc and ametrin  
Authors : Fedorov, A.A.; Fedorov, E.V.; Seffernick, J.; Wackett, L.P.; Almo, S.C.  
Deposited on : 2010-02-12  
Resolution : 1.93 Å (reported)

This is a Full wwPDB X-ray Structure Validation Report for a publicly released PDB entry.

We welcome your comments at [validation@mail.wwpdb.org](mailto:validation@mail.wwpdb.org)

A user guide is available at

<https://www.wwpdb.org/validation/2017/XrayValidationReportHelp>

with specific help available everywhere you see the ⓘ symbol.

The types of validation reports are described at

<http://www.wwpdb.org/validation/2017/FAQs#types>.

---

The following versions of software and data (see [references ⓘ](#)) were used in the production of this report:

MolProbity : 4.02b-467  
Mogul : 1.8.5 (274361), CSD as541be (2020)  
Xtriage (Phenix) : 1.13  
EDS : 2.35  
Percentile statistics : 20191225.v01 (using entries in the PDB archive December 25th 2019)  
Refmac : 5.8.0158  
CCP4 : 7.0.044 (Gargrove)  
Ideal geometry (proteins) : Engh & Huber (2001)  
Ideal geometry (DNA, RNA) : Parkinson et al. (1996)  
Validation Pipeline (wwPDB-VP) : 2.35

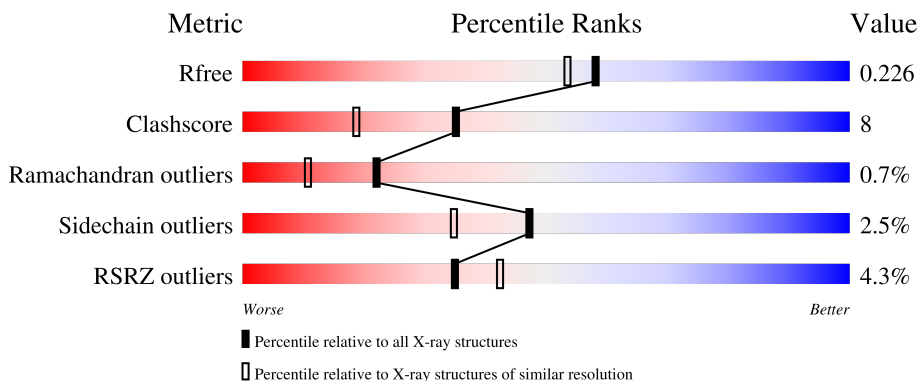
# 1 Overall quality at a glance

The following experimental techniques were used to determine the structure:

*X-RAY DIFFRACTION*

The reported resolution of this entry is 1.93 Å.

Percentile scores (ranging between 0-100) for global validation metrics of the entry are shown in the following graphic. The table shows the number of entries on which the scores are based.



Metric	Whole archive (#Entries)	Similar resolution (#Entries, resolution range(Å))
$R_{free}$	130704	4310 (1.96-1.92)
Clashscore	141614	1023 (1.94-1.94)
Ramachandran outliers	138981	1007 (1.94-1.94)
Sidechain outliers	138945	1007 (1.94-1.94)
RSRZ outliers	127900	4250 (1.96-1.92)

The table below summarises the geometric issues observed across the polymeric chains and their fit to the electron density. The red, orange, yellow and green segments of the lower bar indicate the fraction of residues that contain outliers for  $\geq 3$ , 2, 1 and 0 types of geometric quality criteria respectively. A grey segment represents the fraction of residues that are not modelled. The numeric value for each fraction is indicated below the corresponding segment, with a dot representing fractions  $\leq 5\%$ . The upper red bar (where present) indicates the fraction of residues that have poor fit to the electron density. The numeric value is given above the bar.

Mol	Chain	Length	Quality of chain
1	A	456	
1	B	456	

The following table lists non-polymeric compounds, carbohydrate monomers and non-standard residues in protein, DNA, RNA chains that are outliers for geometric or electron-density-fit criteria:

Mol	Type	Chain	Res	Chirality	Geometry	Clashes	Electron density
2	RYN	A	457	-	X	-	-

## 2 Entry composition [i](#)

There are 4 unique types of molecules in this entry. The entry contains 7162 atoms, of which 0 are hydrogens and 0 are deuteriums.

In the tables below, the ZeroOcc column contains the number of atoms modelled with zero occupancy, the AltConf column contains the number of residues with at least one atom in alternate conformation and the Trace column contains the number of residues modelled with at most 2 atoms.

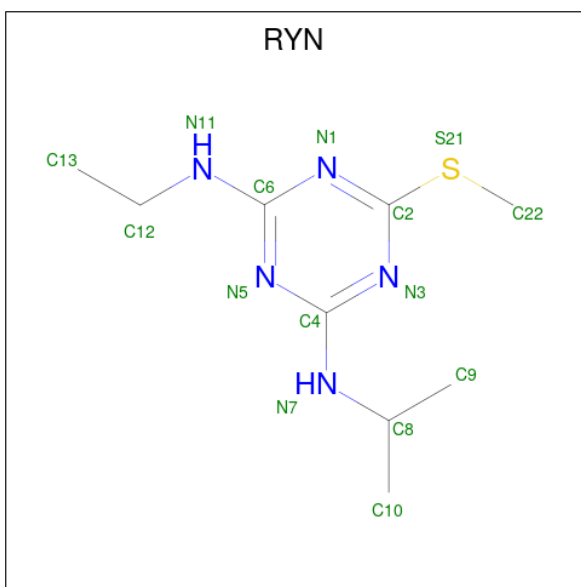
- Molecule 1 is a protein called Triazine hydrolase.

Mol	Chain	Residues	Atoms					ZeroOcc	AltConf	Trace
			Total	C	N	O	S			
1	A	453	3478	2198	615	648	17	0	0	0
1	B	453	3478	2198	615	648	17	0	0	0

There are 2 discrepancies between the modelled and reference sequences:

Chain	Residue	Modelled	Actual	Comment	Reference
A	241	GLN	GLU	engineered mutation	UNP Q6SJY7
B	241	GLN	GLU	engineered mutation	UNP Q6SJY7

- Molecule 2 is N-ethyl-N'-(1-methylethyl)-6-(methylsulfanyl)-1,3,5-triazine-2,4-diamine (three-letter code: RYN) (formula: C<sub>9</sub>H<sub>17</sub>N<sub>5</sub>S).



Mol	Chain	Residues	Atoms				ZeroOcc	AltConf
			Total	C	N	S		
2	A	1	15	9	5	1	0	0

- Molecule 3 is ZINC ION (three-letter code: ZN) (formula: Zn).

Mol	Chain	Residues	Atoms		ZeroOcc	AltConf
3	A	1	Total 1	Zn 1	0	0
3	B	1	Total 1	Zn 1	0	0

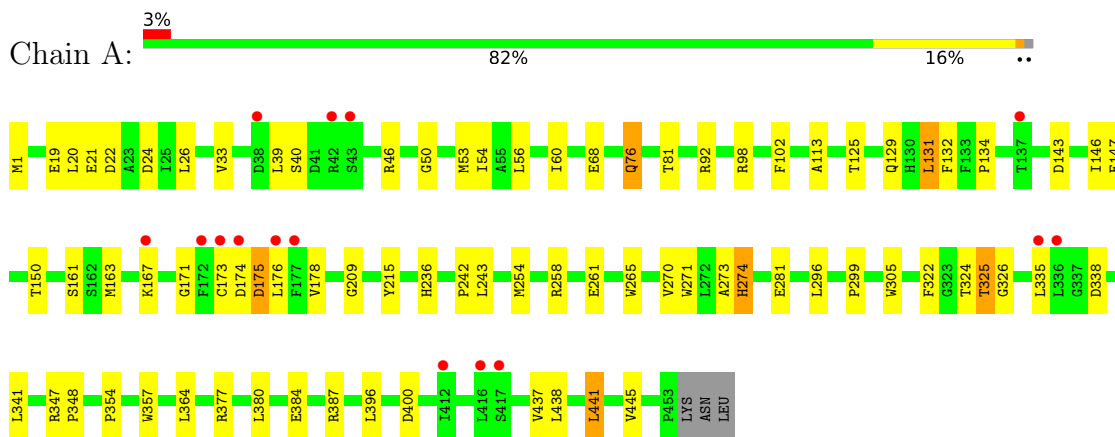
- Molecule 4 is water.

Mol	Chain	Residues	Atoms		ZeroOcc	AltConf
4	A	109	Total 109	O 109	0	0
4	B	80	Total 80	O 80	0	0

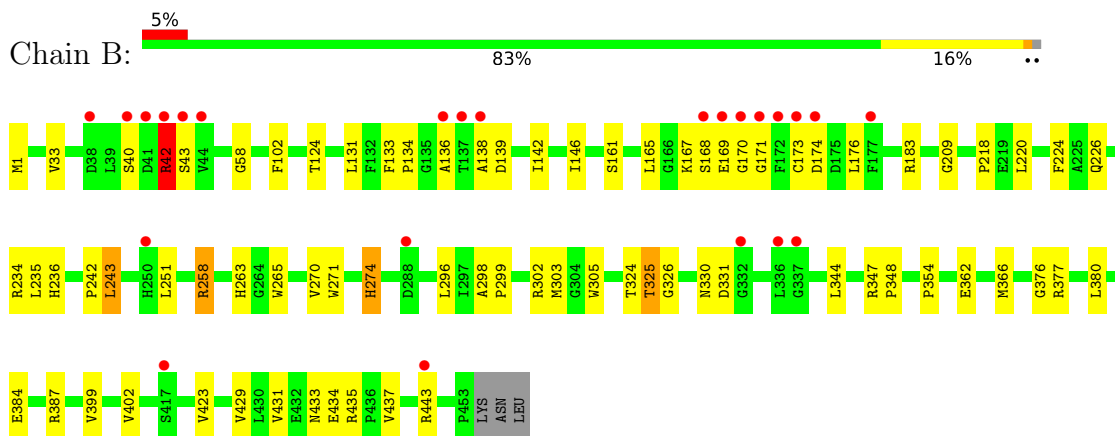
### 3 Residue-property plots [i](#)

These plots are drawn for all protein, RNA, DNA and oligosaccharide chains in the entry. The first graphic for a chain summarises the proportions of the various outlier classes displayed in the second graphic. The second graphic shows the sequence view annotated by issues in geometry and electron density. Residues are color-coded according to the number of geometric quality criteria for which they contain at least one outlier: green = 0, yellow = 1, orange = 2 and red = 3 or more. A red dot above a residue indicates a poor fit to the electron density ( $RSRZ > 2$ ). Stretches of 2 or more consecutive residues without any outlier are shown as a green connector. Residues present in the sample, but not in the model, are shown in grey.

- Molecule 1: Triazine hydrolase



- Molecule 1: Triazine hydrolase



## 4 Data and refinement statistics

Property	Value	Source
Space group	P 1 21 1	Depositor
Cell constants a, b, c, $\alpha$ , $\beta$ , $\gamma$	57.40Å 100.84Å 80.64Å 90.00° 104.42° 90.00°	Depositor
Resolution (Å)	39.05 – 1.93 39.05 – 1.93	Depositor EDS
% Data completeness (in resolution range)	98.1 (39.05-1.93) 98.3 (39.05-1.93)	Depositor EDS
$R_{merge}$	0.07	Depositor
$R_{sym}$	(Not available)	Depositor
$\langle I/\sigma(I) \rangle$ <sup>1</sup>	1.91 (at 1.94Å)	Xtrriage
Refinement program	PHENIX (phenix.refine: 1.5_2)	Depositor
R, $R_{free}$	0.191 , 0.228 0.191 , 0.226	Depositor DCC
$R_{free}$ test set	3318 reflections (5.07%)	wwPDB-VP
Wilson B-factor (Å <sup>2</sup> )	29.4	Xtrriage
Anisotropy	0.370	Xtrriage
Bulk solvent $k_{sol}$ (e/Å <sup>3</sup> ), $B_{sol}$ (Å <sup>2</sup> )	0.37 , 38.2	EDS
L-test for twinning <sup>2</sup>	$\langle  L  \rangle = 0.50$ , $\langle L^2 \rangle = 0.33$	Xtrriage
Estimated twinning fraction	No twinning to report.	Xtrriage
$F_o, F_c$ correlation	0.97	EDS
Total number of atoms	7162	wwPDB-VP
Average B, all atoms (Å <sup>2</sup> )	38.0	wwPDB-VP

Xtrriage's analysis on translational NCS is as follows: *The analyses of the Patterson function reveals a significant off-origin peak that is 22.48 % of the origin peak, indicating pseudo-translational symmetry. The chance of finding a peak of this or larger height randomly in a structure without pseudo-translational symmetry is equal to 5.6479e-03. The detected translational NCS is most likely also responsible for the elevated intensity ratio.*

<sup>1</sup>Intensities estimated from amplitudes.

<sup>2</sup>Theoretical values of  $\langle |L| \rangle$ ,  $\langle L^2 \rangle$  for acentric reflections are 0.5, 0.333 respectively for untwinned datasets, and 0.375, 0.2 for perfectly twinned datasets.

## 5 Model quality [i](#)

### 5.1 Standard geometry [i](#)

Bond lengths and bond angles in the following residue types are not validated in this section: RYN, ZN

The Z score for a bond length (or angle) is the number of standard deviations the observed value is removed from the expected value. A bond length (or angle) with  $|Z| > 5$  is considered an outlier worth inspection. RMSZ is the root-mean-square of all Z scores of the bond lengths (or angles).

Mol	Chain	Bond lengths		Bond angles	
		RMSZ	# Z  >5	RMSZ	# Z  >5
1	A	0.34	0/3556	0.52	0/4838
1	B	0.32	0/3556	0.50	0/4838
All	All	0.33	0/7112	0.51	0/9676

There are no bond length outliers.

There are no bond angle outliers.

There are no chirality outliers.

There are no planarity outliers.

### 5.2 Too-close contacts [i](#)

In the following table, the Non-H and H(model) columns list the number of non-hydrogen atoms and hydrogen atoms in the chain respectively. The H(added) column lists the number of hydrogen atoms added and optimized by MolProbity. The Clashes column lists the number of clashes within the asymmetric unit, whereas Symm-Clashes lists symmetry-related clashes.

Mol	Chain	Non-H	H(model)	H(added)	Clashes	Symm-Clashes
1	A	3478	0	3432	60	0
1	B	3478	0	3432	55	0
2	A	15	0	16	2	0
3	A	1	0	0	0	0
3	B	1	0	0	0	0
4	A	109	0	0	0	0
4	B	80	0	0	0	0
All	All	7162	0	6880	113	0

The all-atom clashscore is defined as the number of clashes found per 1000 atoms (including hydrogen atoms). The all-atom clashscore for this structure is 8.



All (113) close contacts within the same asymmetric unit are listed below, sorted by their clash magnitude.

Atom-1	Atom-2	Interatomic distance (Å)	Clash overlap (Å)
1:B:42:ARG:HG2	1:B:43:SER:H	1.31	0.95
1:B:136:ALA:HB1	1:B:183:ARG:HH12	1.39	0.87
1:B:167:LYS:HE3	1:B:174:ASP:HA	1.63	0.79
1:B:136:ALA:HB1	1:B:183:ARG:NH1	2.03	0.72
1:B:242:PRO:O	1:B:243:LEU:HB2	1.89	0.70
1:A:76:GLN:NE2	1:A:92:ARG:HH11	1.88	0.70
1:A:322:PHE:HD2	1:A:335:LEU:HD11	1.57	0.69
1:B:42:ARG:CG	1:B:43:SER:H	2.03	0.69
1:B:324:THR:O	1:B:325:THR:HG22	1.94	0.68
1:A:299:PRO:HG3	1:A:325:THR:CG2	2.24	0.67
1:A:167:LYS:HA	1:A:171:GLY:O	1.95	0.67
1:A:324:THR:O	1:A:325:THR:HG22	1.93	0.67
1:B:167:LYS:HG2	1:B:173:CYS:O	1.94	0.66
1:B:235:LEU:HB3	1:B:265:TRP:CH2	2.31	0.66
1:B:209:GLY:HA2	1:B:236:HIS:O	1.95	0.65
1:B:42:ARG:HG2	1:B:43:SER:N	2.07	0.63
1:A:50:GLY:HA2	1:A:53:MET:HE2	1.81	0.62
1:B:298:ALA:HB3	1:B:299:PRO:HD3	1.81	0.62
1:B:435:ARG:HH21	1:B:435:ARG:HG3	1.65	0.61
1:B:299:PRO:HG3	1:B:325:THR:CG2	2.32	0.60
1:B:1:MET:HE3	1:B:33:VAL:HG21	1.83	0.59
1:B:242:PRO:HG2	1:B:305:TRP:CD1	2.37	0.58
1:A:146:ILE:O	1:A:150:THR:HG23	2.03	0.58
1:A:68:GLU:OE2	2:A:457:RYN:H10B	2.05	0.57
1:B:325:THR:HG23	1:B:326:GLY:N	2.20	0.56
1:A:384:GLU:HG2	1:A:387:ARG:HG3	1.86	0.56
1:A:50:GLY:HA2	1:A:53:MET:CE	2.35	0.56
1:A:1:MET:HE3	1:A:26:LEU:HD11	1.88	0.55
1:B:133:PHE:CD1	1:B:138:ALA:HB1	2.41	0.55
1:A:265:TRP:O	1:A:270:VAL:HG21	2.07	0.54
1:A:132:PHE:CE1	1:A:134:PRO:HG3	2.42	0.54
1:A:81:THR:HG23	1:B:354:PRO:HG3	1.89	0.53
1:A:131:LEU:HB3	1:A:161:SER:HB3	1.90	0.53
1:B:218:PRO:HB3	1:B:263:HIS:CE1	2.43	0.53
1:B:40:SER:O	1:B:42:ARG:HD2	2.10	0.52
1:A:242:PRO:O	1:A:243:LEU:HB2	2.10	0.51
1:A:175:ASP:HA	1:A:178:VAL:HG23	1.93	0.51
1:B:167:LYS:C	1:B:169:GLU:H	2.14	0.51
1:B:234:ARG:HD2	1:B:376:GLY:HA3	1.93	0.50
1:A:163:MET:HE1	1:A:173:CYS:HB2	1.93	0.50

*Continued on next page...*

*Continued from previous page...*

Atom-1	Atom-2	Interatomic distance (Å)	Clash overlap (Å)
1:A:143:ASP:O	1:A:147:GLU:HG3	2.11	0.50
1:B:296:LEU:O	1:B:299:PRO:HD2	2.11	0.49
1:A:76:GLN:NE2	1:A:92:ARG:NH1	2.58	0.49
1:A:176:LEU:O	1:A:176:LEU:HD23	2.13	0.48
1:A:322:PHE:HD2	1:A:335:LEU:CD1	2.26	0.48
1:B:42:ARG:CG	1:B:43:SER:N	2.73	0.48
1:A:19:GLU:C	1:A:20:LEU:HD12	2.34	0.48
1:A:437:VAL:HG23	1:A:438:LEU:HG	1.97	0.47
1:A:24:ASP:HB2	1:A:39:LEU:HG	1.96	0.47
1:A:441:LEU:O	1:A:445:VAL:HG23	2.14	0.47
1:A:46:ARG:HH11	1:A:46:ARG:HG3	1.78	0.47
1:A:56:LEU:HD21	1:A:364:LEU:HD22	1.95	0.47
1:A:296:LEU:O	1:A:299:PRO:HD2	2.14	0.47
1:B:134:PRO:HA	1:B:176:LEU:HD13	1.97	0.47
1:B:258:ARG:HA	1:B:258:ARG:NE	2.30	0.47
1:A:26:LEU:HG	1:A:33:VAL:CG2	2.45	0.46
1:A:209:GLY:HA2	1:A:236:HIS:O	2.16	0.46
1:A:299:PRO:HG3	1:A:325:THR:HG22	1.95	0.46
1:A:347:ARG:HB2	1:A:348:PRO:HD3	1.97	0.46
1:B:265:TRP:O	1:B:270:VAL:HG21	2.16	0.46
1:B:423:VAL:HB	1:B:431:VAL:HB	1.98	0.46
1:B:330:ASN:H	1:B:331:ASP:HA	1.81	0.46
1:A:163:MET:CE	1:A:173:CYS:HB2	2.45	0.45
1:A:299:PRO:HG3	1:A:325:THR:HG21	1.97	0.45
1:A:132:PHE:CZ	1:A:134:PRO:HG3	2.51	0.45
1:B:165:LEU:HG	1:B:171:GLY:HA3	1.99	0.45
1:A:132:PHE:CZ	1:A:134:PRO:CG	3.00	0.45
1:B:299:PRO:HG3	1:B:325:THR:HG22	1.98	0.45
1:A:20:LEU:HD12	1:A:20:LEU:N	2.32	0.45
1:A:113:ALA:HB1	1:B:402:VAL:HG21	1.98	0.45
1:A:273:ALA:O	1:A:274:HIS:HB2	2.16	0.45
1:A:281:GLU:H	1:A:281:GLU:CD	2.20	0.44
1:B:142:ILE:O	1:B:146:ILE:HG13	2.17	0.44
1:A:26:LEU:O	1:A:33:VAL:HG22	2.17	0.44
1:B:302:ARG:HH11	1:B:303:MET:HE1	1.82	0.44
1:B:58:GLY:HA3	1:B:124:THR:OG1	2.18	0.44
1:A:129:GLN:HG2	1:A:161:SER:HB2	1.99	0.44
1:B:274:HIS:CE1	1:B:296:LEU:HD12	2.53	0.44
1:B:362:GLU:O	1:B:366:MET:HG3	2.18	0.44
1:B:377:ARG:HB3	1:B:380:LEU:HG	2.00	0.43
1:A:274:HIS:CE1	1:A:296:LEU:HD12	2.53	0.43

*Continued on next page...*

Continued from previous page...

Atom-1	Atom-2	Interatomic distance (Å)	Clash overlap (Å)
1:B:347:ARG:HB2	1:B:348:PRO:HD3	1.99	0.43
1:A:242:PRO:O	1:A:243:LEU:CB	2.66	0.43
1:A:242:PRO:HG2	1:A:305:TRP:CD1	2.53	0.43
1:B:258:ARG:HA	1:B:258:ARG:HE	1.83	0.43
1:B:429:VAL:HG12	1:B:437:VAL:HG21	1.99	0.43
1:A:215:TYR:CZ	2:A:457:RYN:H13	2.54	0.43
1:A:258:ARG:NH1	1:A:261:GLU:OE1	2.51	0.43
1:A:76:GLN:HE21	1:A:92:ARG:NH1	2.16	0.43
1:A:325:THR:HG23	1:A:326:GLY:N	2.34	0.43
1:A:54:ILE:HB	1:A:396:LEU:HD11	2.01	0.42
1:B:220:LEU:HD11	1:B:224:PHE:CZ	2.54	0.42
1:B:1:MET:CE	1:B:33:VAL:HG21	2.48	0.42
1:B:443:ARG:HA	1:B:443:ARG:HD2	1.89	0.42
1:A:60:ILE:HG23	1:A:125:THR:HB	2.02	0.42
1:B:242:PRO:HD2	1:B:305:TRP:CE2	2.54	0.42
1:A:131:LEU:C	1:A:131:LEU:HD12	2.40	0.41
1:A:377:ARG:HB3	1:A:380:LEU:HG	2.03	0.41
1:A:400:ASP:OD1	1:A:400:ASP:N	2.52	0.41
1:B:399:VAL:O	1:B:402:VAL:HG22	2.20	0.41
1:A:21:GLU:O	1:A:22:ASP:C	2.57	0.41
1:B:170:GLY:O	1:B:251:LEU:HD21	2.21	0.41
1:B:302:ARG:HH11	1:B:303:MET:CE	2.34	0.41
1:B:131:LEU:HD23	1:B:161:SER:OG	2.20	0.41
1:A:175:ASP:HA	1:A:178:VAL:CG2	2.50	0.41
1:B:40:SER:HB3	1:B:42:ARG:NE	2.36	0.41
1:B:235:LEU:HB3	1:B:265:TRP:CZ3	2.55	0.41
1:B:433:ASN:O	1:B:434:GLU:HB2	2.20	0.41
1:A:338:ASP:O	1:A:341:LEU:HB2	2.21	0.40
1:B:435:ARG:HG3	1:B:435:ARG:NH2	2.34	0.40
1:B:384:GLU:HG2	1:B:387:ARG:HG3	2.03	0.40
1:A:354:PRO:HA	1:A:357:TRP:CD2	2.56	0.40
1:A:26:LEU:HG	1:A:33:VAL:HG21	2.02	0.40

There are no symmetry-related clashes.

## 5.3 Torsion angles [i](#)

### 5.3.1 Protein backbone [i](#)

In the following table, the Percentiles column shows the percent Ramachandran outliers of the chain as a percentile score with respect to all X-ray entries followed by that with respect to entries

of similar resolution.

The Analysed column shows the number of residues for which the backbone conformation was analysed, and the total number of residues.

Mol	Chain	Analysed	Favoured	Allowed	Outliers	Percentiles	
1	A	451/456 (99%)	435 (96%)	14 (3%)	2 (0%)	34	24
1	B	451/456 (99%)	433 (96%)	14 (3%)	4 (1%)	17	7
All	All	902/912 (99%)	868 (96%)	28 (3%)	6 (1%)	22	11

All (6) Ramachandran outliers are listed below:

Mol	Chain	Res	Type
1	B	42	ARG
1	B	139	ASP
1	A	274	HIS
1	A	325	THR
1	B	168	SER
1	B	274	HIS

### 5.3.2 Protein sidechains [i](#)

In the following table, the Percentiles column shows the percent sidechain outliers of the chain as a percentile score with respect to all X-ray entries followed by that with respect to entries of similar resolution.

The Analysed column shows the number of residues for which the sidechain conformation was analysed, and the total number of residues.

Mol	Chain	Analysed	Rotameric	Outliers	Percentiles	
1	A	360/363 (99%)	350 (97%)	10 (3%)	43	29
1	B	360/363 (99%)	352 (98%)	8 (2%)	52	39
All	All	720/726 (99%)	702 (98%)	18 (2%)	47	35

All (18) residues with a non-rotameric sidechain are listed below:

Mol	Chain	Res	Type
1	A	40	SER
1	A	76	GLN
1	A	98	ARG
1	A	102	PHE
1	A	131	LEU
1	A	174	ASP

*Continued on next page...*

*Continued from previous page...*

Mol	Chain	Res	Type
1	A	175	ASP
1	A	254	MET
1	A	271	TRP
1	A	441	LEU
1	B	42	ARG
1	B	102	PHE
1	B	226	GLN
1	B	243	LEU
1	B	258	ARG
1	B	271	TRP
1	B	325	THR
1	B	344	LEU

Sometimes sidechains can be flipped to improve hydrogen bonding and reduce clashes. All (1) such sidechains are listed below:

Mol	Chain	Res	Type
1	A	76	GLN

### 5.3.3 RNA [i](#)

There are no RNA molecules in this entry.

## 5.4 Non-standard residues in protein, DNA, RNA chains [i](#)

There are no non-standard protein/DNA/RNA residues in this entry.

## 5.5 Carbohydrates [i](#)

There are no monosaccharides in this entry.

## 5.6 Ligand geometry [i](#)

Of 3 ligands modelled in this entry, 2 are monoatomic - leaving 1 for Mogul analysis.

In the following table, the Counts columns list the number of bonds (or angles) for which Mogul statistics could be retrieved, the number of bonds (or angles) that are observed in the model and the number of bonds (or angles) that are defined in the Chemical Component Dictionary. The Link column lists molecule types, if any, to which the group is linked. The Z score for a bond length (or angle) is the number of standard deviations the observed value is removed from the

expected value. A bond length (or angle) with  $|Z| > 2$  is considered an outlier worth inspection. RMSZ is the root-mean-square of all Z scores of the bond lengths (or angles).

Mol	Type	Chain	Res	Link	Bond lengths			Bond angles		
					Counts	RMSZ	# Z  > 2	Counts	RMSZ	# Z  > 2
2	RYN	A	457	-	15,15,15	2.45	3 (20%)	19,19,19	9.65	13 (68%)

In the following table, the Chirals column lists the number of chiral outliers, the number of chiral centers analysed, the number of these observed in the model and the number defined in the Chemical Component Dictionary. Similar counts are reported in the Torsion and Rings columns. '-' means no outliers of that kind were identified.

Mol	Type	Chain	Res	Link	Chirals	Torsions	Rings
2	RYN	A	457	-	-	2/9/9/9	0/1/1/1

All (3) bond length outliers are listed below:

Mol	Chain	Res	Type	Atoms	Z	Observed(Å)	Ideal(Å)
2	A	457	RYN	C4-N7	6.43	1.43	1.34
2	A	457	RYN	C6-N11	5.53	1.42	1.34
2	A	457	RYN	C6-N1	2.29	1.41	1.34

All (13) bond angle outliers are listed below:

Mol	Chain	Res	Type	Atoms	Z	Observed(°)	Ideal(°)
2	A	457	RYN	C4-N7-C8	29.16	148.48	124.53
2	A	457	RYN	C12-N11-C6	24.19	153.68	123.85
2	A	457	RYN	C2-N1-C6	9.90	119.43	113.85
2	A	457	RYN	C2-N3-C4	8.53	118.66	113.85
2	A	457	RYN	C22-S21-C2	6.27	106.95	102.27
2	A	457	RYN	N7-C4-N3	4.77	124.35	117.18
2	A	457	RYN	C6-N5-C4	4.27	121.13	113.89
2	A	457	RYN	N5-C6-N1	-4.24	119.53	126.23
2	A	457	RYN	N11-C6-N1	3.95	124.03	117.19
2	A	457	RYN	N5-C4-N3	-3.83	120.17	126.23
2	A	457	RYN	C10-C8-N7	3.77	118.14	109.94
2	A	457	RYN	N3-C2-N1	-3.22	121.05	126.95
2	A	457	RYN	C10-C8-C9	2.14	116.34	111.58

There are no chirality outliers.

All (2) torsion outliers are listed below:

Mol	Chain	Res	Type	Atoms
2	A	457	RYN	C9-C8-N7-C4
2	A	457	RYN	C13-C12-N11-C6

There are no ring outliers.

1 monomer is involved in 2 short contacts:

Mol	Chain	Res	Type	Clashes	Symm-Clashes
2	A	457	RYN	2	0

## 5.7 Other polymers [i](#)

There are no such residues in this entry.

## 5.8 Polymer linkage issues [i](#)

There are no chain breaks in this entry.

## 6 Fit of model and data

### 6.1 Protein, DNA and RNA chains

In the following table, the column labelled ‘#RSRZ > 2’ contains the number (and percentage) of RSRZ outliers, followed by percent RSRZ outliers for the chain as percentile scores relative to all X-ray entries and entries of similar resolution. The OWAB column contains the minimum, median, 95<sup>th</sup> percentile and maximum values of the occupancy-weighted average B-factor per residue. The column labelled ‘Q < 0.9’ lists the number of (and percentage) of residues with an average occupancy less than 0.9.

Mol	Chain	Analysed	<RSRZ>	#RSRZ>2	OWAB(Å <sup>2</sup> )	Q<0.9
1	A	453/456 (99%)	0.04	15 (3%) 46 54	26, 35, 50, 81	0
1	B	453/456 (99%)	0.18	24 (5%) 26 33	27, 38, 59, 79	0
All	All	906/912 (99%)	0.11	39 (4%) 35 42	26, 36, 55, 81	0

All (39) RSRZ outliers are listed below:

Mol	Chain	Res	Type	RSRZ
1	A	172	PHE	9.1
1	B	137	THR	7.3
1	B	42	ARG	6.8
1	A	174	ASP	4.8
1	A	42	ARG	4.3
1	B	136	ALA	4.3
1	B	43	SER	4.0
1	B	172	PHE	4.0
1	B	168	SER	3.9
1	B	173	CYS	3.5
1	B	170	GLY	3.4
1	A	167	LYS	3.4
1	B	41	ASP	3.2
1	B	38	ASP	3.2
1	A	43	SER	2.9
1	B	40	SER	2.8
1	A	335	LEU	2.8
1	B	177	PHE	2.7
1	A	412	ILE	2.6
1	B	417	SER	2.5
1	A	177	PHE	2.5
1	B	337	GLY	2.5
1	B	138	ALA	2.4
1	B	443	ARG	2.3

*Continued on next page...*



*Continued from previous page...*

Mol	Chain	Res	Type	RSRZ
1	A	173	CYS	2.3
1	B	171	GLY	2.2
1	B	174	ASP	2.2
1	B	250	HIS	2.2
1	A	137	THR	2.2
1	A	38	ASP	2.2
1	B	288	ASP	2.1
1	A	416	LEU	2.1
1	B	336	LEU	2.1
1	A	417	SER	2.1
1	B	169	GLU	2.1
1	A	336	LEU	2.1
1	B	332	GLY	2.1
1	B	44	VAL	2.0
1	A	176	LEU	2.0

## 6.2 Non-standard residues in protein, DNA, RNA chains [i](#)

There are no non-standard protein/DNA/RNA residues in this entry.

## 6.3 Carbohydrates [i](#)

There are no monosaccharides in this entry.

## 6.4 Ligands [i](#)

In the following table, the Atoms column lists the number of modelled atoms in the group and the number defined in the chemical component dictionary. The B-factors column lists the minimum, median, 95<sup>th</sup> percentile and maximum values of B factors of atoms in the group. The column labelled 'Q<0.9' lists the number of atoms with occupancy less than 0.9.

Mol	Type	Chain	Res	Atoms	RSCC	RSR	B-factors(Å <sup>2</sup> )	Q<0.9
2	RYN	A	457	15/15	0.91	0.16	39,42,44,44	0
3	ZN	B	457	1/1	0.99	0.10	37,37,37,37	0
3	ZN	A	458	1/1	1.00	0.12	34,34,34,34	0

## 6.5 Other polymers [i](#)

There are no such residues in this entry.