



wwPDB EM Validation Summary Report ⓘ

Apr 15, 2026 – 06:39 PM JST

PDB ID : 9LEY / pdb_00009ley
EMDB ID : EMD-63037
Title : Cryo-EM structure of human ZAC in complex with d-tubocurarine
Authors : Qu, Q.; Zhou, Z.
Deposited on : 2025-01-07
Resolution : 2.97 Å(reported)

This is a wwPDB EM Validation Summary Report for a publicly released PDB entry.

We welcome your comments at validation@mail.wwpdb.org

A user guide is available at

<https://www.wwpdb.org/validation/2017/EMValidationReportHelp>

with specific help available everywhere you see the ⓘ symbol.

The types of validation reports are described at

<http://www.wwpdb.org/validation/2017/FAQs#types>.

The following versions of software and data (see [references ⓘ](#)) were used in the production of this report:

EMDB validation analysis : 0.0.1.dev132
Mogul : 1.8.5 (274361), CSD as541be (2020)
MolProbity : 4-5-2 with Phenix2.0
Buster-report : wwPDB partial adaption of 1.1.7 (2018)
Percentile statistics : 20250101.v01 (using entries in the PDB archive January 1st 2025)
EM percentile statistics : 202505.v01 (Using data in the EMDB archive up until May 2025)
MapQ : 1.9.13
Ideal geometry (proteins) : Engh & Huber (2001)
Ideal geometry (DNA, RNA) : Parkinson et al. (1996)
Validation Pipeline (wwPDB-VP) : 2.49

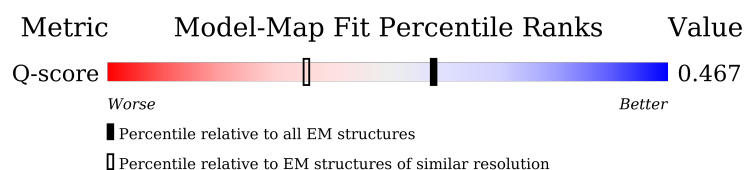
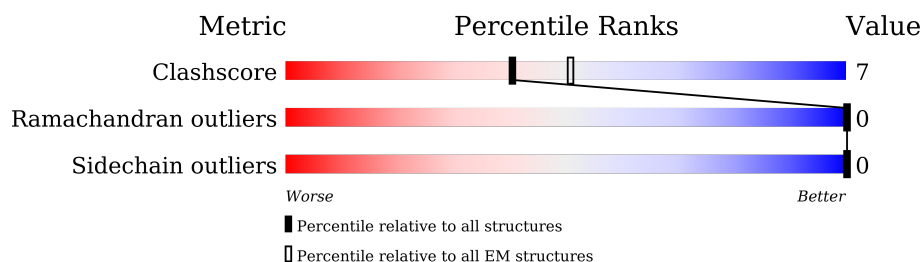
1 Overall quality at a glance

The following experimental techniques were used to determine the structure:

ELECTRON MICROSCOPY

The reported resolution of this entry is 2.97 Å.

Percentile scores (ranging between 0-100) for global validation metrics of the entry are shown in the following graphic. The table shows the number of entries on which the scores are based.



Metric	Whole archive (#Entries)	EM structures (#Entries)	Similar EM resolution (#Entries, resolution range(Å))
Clashscore	229148	23984	-
Ramachandran outliers	224038	23583	-
Sidechain outliers	223484	23102	-
Q-score	-	25397	13205 (2.47 - 3.47)

The table below summarises the geometric issues observed across the polymeric chains and their fit to the map. The red, orange, yellow and green segments of the bar indicate the fraction of residues that contain outliers for ≥ 3 , 2, 1 and 0 types of geometric quality criteria respectively. A grey segment represents the fraction of residues that are not modelled. The numeric value for each fraction is indicated below the corresponding segment, with a dot representing fractions $\leq 5\%$. The upper red bar (where present) indicates the fraction of residues that have poor fit to the EM map (all-atom inclusion $< 40\%$). The numeric value is given above the bar.

Mol	Chain	Length	Quality of chain
1	A	705	
1	B	705	
1	C	705	
1	D	705	

Continued on next page...

Continued from previous page...

Mol	Chain	Length	Quality of chain
1	E	705	 36% 8% 56%
2	F	3	 67% 100%
2	G	3	 33% 67%
2	H	3	 33% 100%
2	I	3	 67% 67%
2	J	3	 33% 100%
2	K	3	 67% 67%
2	L	3	 33% 100%
2	M	3	 67% 67%
2	N	3	 33% 100%
2	O	3	 33% 67%

2 Entry composition

There are 3 unique types of molecules in this entry. The entry contains 12830 atoms, of which 0 are hydrogens and 0 are deuteriums.

In the tables below, the AltConf column contains the number of residues with at least one atom in alternate conformation and the Trace column contains the number of residues modelled with at most 2 atoms.

- Molecule 1 is a protein called Ligand-gated cation channel ZACN,Genome polypeptide.

Mol	Chain	Residues	Atoms					AltConf	Trace
1	D	311	Total	C	N	O	S	0	0
			2470	1613	410	436	11		
1	B	311	Total	C	N	O	S	0	0
			2470	1613	410	436	11		
1	C	311	Total	C	N	O	S	0	0
			2470	1613	410	436	11		
1	A	311	Total	C	N	O	S	0	0
			2470	1613	410	436	11		
1	E	311	Total	C	N	O	S	0	0
			2470	1613	410	436	11		

There are 280 discrepancies between the modelled and reference sequences:

Chain	Residue	Modelled	Actual	Comment	Reference
D	152	THR	ALA	engineered mutation	UNP Q401N2
D	413	SER	-	linker	UNP Q401N2
D	414	ASP	-	linker	UNP Q401N2
D	415	LEU	-	linker	UNP Q401N2
D	416	GLU	-	linker	UNP Q401N2
D	417	VAL	-	linker	UNP Q401N2
D	418	LEU	-	linker	UNP Q401N2
D	419	PHE	-	linker	UNP Q401N2
D	420	GLN	-	linker	UNP Q401N2
D	421	GLY	-	linker	UNP Q401N2
D	422	PRO	-	linker	UNP Q401N2
D	423	GLU	-	linker	UNP Q401N2
D	424	PHE	-	linker	UNP Q401N2
D	425	TRP	-	linker	UNP Q401N2
D	426	SER	-	linker	UNP Q401N2
D	427	HIS	-	linker	UNP Q401N2
D	428	PRO	-	linker	UNP Q401N2
D	429	GLN	-	linker	UNP Q401N2
D	430	PHE	-	linker	UNP Q401N2
D	431	GLU	-	linker	UNP Q401N2

Continued on next page...

Continued from previous page...

Chain	Residue	Modelled	Actual	Comment	Reference
D	432	LYS	-	linker	UNP Q401N2
D	433	GLY	-	linker	UNP Q401N2
D	434	GLY	-	linker	UNP Q401N2
D	435	GLY	-	linker	UNP Q401N2
D	436	SER	-	linker	UNP Q401N2
D	437	GLY	-	linker	UNP Q401N2
D	438	GLY	-	linker	UNP Q401N2
D	439	GLY	-	linker	UNP Q401N2
D	440	SER	-	linker	UNP Q401N2
D	441	GLY	-	linker	UNP Q401N2
D	442	GLY	-	linker	UNP Q401N2
D	443	SER	-	linker	UNP Q401N2
D	444	ALA	-	linker	UNP Q401N2
D	445	TRP	-	linker	UNP Q401N2
D	446	SER	-	linker	UNP Q401N2
D	447	HIS	-	linker	UNP Q401N2
D	448	PRO	-	linker	UNP Q401N2
D	449	GLN	-	linker	UNP Q401N2
D	450	PHE	-	linker	UNP Q401N2
D	451	GLU	-	linker	UNP Q401N2
D	452	LYS	-	linker	UNP Q401N2
D	453	GLU	-	linker	UNP Q401N2
D	454	PHE	-	linker	UNP Q401N2
D	455	ASP	-	linker	UNP Q401N2
D	456	ILE	-	linker	UNP Q401N2
D	457	ASP	-	linker	UNP Q401N2
D	458	TYR	-	linker	UNP Q401N2
D	459	LYS	-	linker	UNP Q401N2
D	460	ASP	-	linker	UNP Q401N2
D	461	ASP	-	linker	UNP Q401N2
D	462	ASP	-	linker	UNP Q401N2
D	463	ASP	-	linker	UNP Q401N2
D	464	LYS	-	linker	UNP Q401N2
D	465	SER	-	linker	UNP Q401N2
D	466	ARG	-	linker	UNP Q401N2
D	467	MET	-	linker	UNP Q401N2
B	152	THR	ALA	engineered mutation	UNP Q401N2
B	413	SER	-	linker	UNP Q401N2
B	414	ASP	-	linker	UNP Q401N2
B	415	LEU	-	linker	UNP Q401N2
B	416	GLU	-	linker	UNP Q401N2
B	417	VAL	-	linker	UNP Q401N2

Continued on next page...

Continued from previous page...

Chain	Residue	Modelled	Actual	Comment	Reference
B	418	LEU	-	linker	UNP Q401N2
B	419	PHE	-	linker	UNP Q401N2
B	420	GLN	-	linker	UNP Q401N2
B	421	GLY	-	linker	UNP Q401N2
B	422	PRO	-	linker	UNP Q401N2
B	423	GLU	-	linker	UNP Q401N2
B	424	PHE	-	linker	UNP Q401N2
B	425	TRP	-	linker	UNP Q401N2
B	426	SER	-	linker	UNP Q401N2
B	427	HIS	-	linker	UNP Q401N2
B	428	PRO	-	linker	UNP Q401N2
B	429	GLN	-	linker	UNP Q401N2
B	430	PHE	-	linker	UNP Q401N2
B	431	GLU	-	linker	UNP Q401N2
B	432	LYS	-	linker	UNP Q401N2
B	433	GLY	-	linker	UNP Q401N2
B	434	GLY	-	linker	UNP Q401N2
B	435	GLY	-	linker	UNP Q401N2
B	436	SER	-	linker	UNP Q401N2
B	437	GLY	-	linker	UNP Q401N2
B	438	GLY	-	linker	UNP Q401N2
B	439	GLY	-	linker	UNP Q401N2
B	440	SER	-	linker	UNP Q401N2
B	441	GLY	-	linker	UNP Q401N2
B	442	GLY	-	linker	UNP Q401N2
B	443	SER	-	linker	UNP Q401N2
B	444	ALA	-	linker	UNP Q401N2
B	445	TRP	-	linker	UNP Q401N2
B	446	SER	-	linker	UNP Q401N2
B	447	HIS	-	linker	UNP Q401N2
B	448	PRO	-	linker	UNP Q401N2
B	449	GLN	-	linker	UNP Q401N2
B	450	PHE	-	linker	UNP Q401N2
B	451	GLU	-	linker	UNP Q401N2
B	452	LYS	-	linker	UNP Q401N2
B	453	GLU	-	linker	UNP Q401N2
B	454	PHE	-	linker	UNP Q401N2
B	455	ASP	-	linker	UNP Q401N2
B	456	ILE	-	linker	UNP Q401N2
B	457	ASP	-	linker	UNP Q401N2
B	458	TYR	-	linker	UNP Q401N2
B	459	LYS	-	linker	UNP Q401N2

Continued on next page...

Continued from previous page...

Chain	Residue	Modelled	Actual	Comment	Reference
B	460	ASP	-	linker	UNP Q401N2
B	461	ASP	-	linker	UNP Q401N2
B	462	ASP	-	linker	UNP Q401N2
B	463	ASP	-	linker	UNP Q401N2
B	464	LYS	-	linker	UNP Q401N2
B	465	SER	-	linker	UNP Q401N2
B	466	ARG	-	linker	UNP Q401N2
B	467	MET	-	linker	UNP Q401N2
C	152	THR	ALA	engineered mutation	UNP Q401N2
C	413	SER	-	linker	UNP Q401N2
C	414	ASP	-	linker	UNP Q401N2
C	415	LEU	-	linker	UNP Q401N2
C	416	GLU	-	linker	UNP Q401N2
C	417	VAL	-	linker	UNP Q401N2
C	418	LEU	-	linker	UNP Q401N2
C	419	PHE	-	linker	UNP Q401N2
C	420	GLN	-	linker	UNP Q401N2
C	421	GLY	-	linker	UNP Q401N2
C	422	PRO	-	linker	UNP Q401N2
C	423	GLU	-	linker	UNP Q401N2
C	424	PHE	-	linker	UNP Q401N2
C	425	TRP	-	linker	UNP Q401N2
C	426	SER	-	linker	UNP Q401N2
C	427	HIS	-	linker	UNP Q401N2
C	428	PRO	-	linker	UNP Q401N2
C	429	GLN	-	linker	UNP Q401N2
C	430	PHE	-	linker	UNP Q401N2
C	431	GLU	-	linker	UNP Q401N2
C	432	LYS	-	linker	UNP Q401N2
C	433	GLY	-	linker	UNP Q401N2
C	434	GLY	-	linker	UNP Q401N2
C	435	GLY	-	linker	UNP Q401N2
C	436	SER	-	linker	UNP Q401N2
C	437	GLY	-	linker	UNP Q401N2
C	438	GLY	-	linker	UNP Q401N2
C	439	GLY	-	linker	UNP Q401N2
C	440	SER	-	linker	UNP Q401N2
C	441	GLY	-	linker	UNP Q401N2
C	442	GLY	-	linker	UNP Q401N2
C	443	SER	-	linker	UNP Q401N2
C	444	ALA	-	linker	UNP Q401N2
C	445	TRP	-	linker	UNP Q401N2

Continued on next page...

Continued from previous page...

Chain	Residue	Modelled	Actual	Comment	Reference
C	446	SER	-	linker	UNP Q401N2
C	447	HIS	-	linker	UNP Q401N2
C	448	PRO	-	linker	UNP Q401N2
C	449	GLN	-	linker	UNP Q401N2
C	450	PHE	-	linker	UNP Q401N2
C	451	GLU	-	linker	UNP Q401N2
C	452	LYS	-	linker	UNP Q401N2
C	453	GLU	-	linker	UNP Q401N2
C	454	PHE	-	linker	UNP Q401N2
C	455	ASP	-	linker	UNP Q401N2
C	456	ILE	-	linker	UNP Q401N2
C	457	ASP	-	linker	UNP Q401N2
C	458	TYR	-	linker	UNP Q401N2
C	459	LYS	-	linker	UNP Q401N2
C	460	ASP	-	linker	UNP Q401N2
C	461	ASP	-	linker	UNP Q401N2
C	462	ASP	-	linker	UNP Q401N2
C	463	ASP	-	linker	UNP Q401N2
C	464	LYS	-	linker	UNP Q401N2
C	465	SER	-	linker	UNP Q401N2
C	466	ARG	-	linker	UNP Q401N2
C	467	MET	-	linker	UNP Q401N2
A	152	THR	ALA	engineered mutation	UNP Q401N2
A	413	SER	-	linker	UNP Q401N2
A	414	ASP	-	linker	UNP Q401N2
A	415	LEU	-	linker	UNP Q401N2
A	416	GLU	-	linker	UNP Q401N2
A	417	VAL	-	linker	UNP Q401N2
A	418	LEU	-	linker	UNP Q401N2
A	419	PHE	-	linker	UNP Q401N2
A	420	GLN	-	linker	UNP Q401N2
A	421	GLY	-	linker	UNP Q401N2
A	422	PRO	-	linker	UNP Q401N2
A	423	GLU	-	linker	UNP Q401N2
A	424	PHE	-	linker	UNP Q401N2
A	425	TRP	-	linker	UNP Q401N2
A	426	SER	-	linker	UNP Q401N2
A	427	HIS	-	linker	UNP Q401N2
A	428	PRO	-	linker	UNP Q401N2
A	429	GLN	-	linker	UNP Q401N2
A	430	PHE	-	linker	UNP Q401N2
A	431	GLU	-	linker	UNP Q401N2

Continued on next page...

Continued from previous page...

Chain	Residue	Modelled	Actual	Comment	Reference
A	432	LYS	-	linker	UNP Q401N2
A	433	GLY	-	linker	UNP Q401N2
A	434	GLY	-	linker	UNP Q401N2
A	435	GLY	-	linker	UNP Q401N2
A	436	SER	-	linker	UNP Q401N2
A	437	GLY	-	linker	UNP Q401N2
A	438	GLY	-	linker	UNP Q401N2
A	439	GLY	-	linker	UNP Q401N2
A	440	SER	-	linker	UNP Q401N2
A	441	GLY	-	linker	UNP Q401N2
A	442	GLY	-	linker	UNP Q401N2
A	443	SER	-	linker	UNP Q401N2
A	444	ALA	-	linker	UNP Q401N2
A	445	TRP	-	linker	UNP Q401N2
A	446	SER	-	linker	UNP Q401N2
A	447	HIS	-	linker	UNP Q401N2
A	448	PRO	-	linker	UNP Q401N2
A	449	GLN	-	linker	UNP Q401N2
A	450	PHE	-	linker	UNP Q401N2
A	451	GLU	-	linker	UNP Q401N2
A	452	LYS	-	linker	UNP Q401N2
A	453	GLU	-	linker	UNP Q401N2
A	454	PHE	-	linker	UNP Q401N2
A	455	ASP	-	linker	UNP Q401N2
A	456	ILE	-	linker	UNP Q401N2
A	457	ASP	-	linker	UNP Q401N2
A	458	TYR	-	linker	UNP Q401N2
A	459	LYS	-	linker	UNP Q401N2
A	460	ASP	-	linker	UNP Q401N2
A	461	ASP	-	linker	UNP Q401N2
A	462	ASP	-	linker	UNP Q401N2
A	463	ASP	-	linker	UNP Q401N2
A	464	LYS	-	linker	UNP Q401N2
A	465	SER	-	linker	UNP Q401N2
A	466	ARG	-	linker	UNP Q401N2
A	467	MET	-	linker	UNP Q401N2
E	152	THR	ALA	engineered mutation	UNP Q401N2
E	413	SER	-	linker	UNP Q401N2
E	414	ASP	-	linker	UNP Q401N2
E	415	LEU	-	linker	UNP Q401N2
E	416	GLU	-	linker	UNP Q401N2
E	417	VAL	-	linker	UNP Q401N2

Continued on next page...

Continued from previous page...

Chain	Residue	Modelled	Actual	Comment	Reference
E	418	LEU	-	linker	UNP Q401N2
E	419	PHE	-	linker	UNP Q401N2
E	420	GLN	-	linker	UNP Q401N2
E	421	GLY	-	linker	UNP Q401N2
E	422	PRO	-	linker	UNP Q401N2
E	423	GLU	-	linker	UNP Q401N2
E	424	PHE	-	linker	UNP Q401N2
E	425	TRP	-	linker	UNP Q401N2
E	426	SER	-	linker	UNP Q401N2
E	427	HIS	-	linker	UNP Q401N2
E	428	PRO	-	linker	UNP Q401N2
E	429	GLN	-	linker	UNP Q401N2
E	430	PHE	-	linker	UNP Q401N2
E	431	GLU	-	linker	UNP Q401N2
E	432	LYS	-	linker	UNP Q401N2
E	433	GLY	-	linker	UNP Q401N2
E	434	GLY	-	linker	UNP Q401N2
E	435	GLY	-	linker	UNP Q401N2
E	436	SER	-	linker	UNP Q401N2
E	437	GLY	-	linker	UNP Q401N2
E	438	GLY	-	linker	UNP Q401N2
E	439	GLY	-	linker	UNP Q401N2
E	440	SER	-	linker	UNP Q401N2
E	441	GLY	-	linker	UNP Q401N2
E	442	GLY	-	linker	UNP Q401N2
E	443	SER	-	linker	UNP Q401N2
E	444	ALA	-	linker	UNP Q401N2
E	445	TRP	-	linker	UNP Q401N2
E	446	SER	-	linker	UNP Q401N2
E	447	HIS	-	linker	UNP Q401N2
E	448	PRO	-	linker	UNP Q401N2
E	449	GLN	-	linker	UNP Q401N2
E	450	PHE	-	linker	UNP Q401N2
E	451	GLU	-	linker	UNP Q401N2
E	452	LYS	-	linker	UNP Q401N2
E	453	GLU	-	linker	UNP Q401N2
E	454	PHE	-	linker	UNP Q401N2
E	455	ASP	-	linker	UNP Q401N2
E	456	ILE	-	linker	UNP Q401N2
E	457	ASP	-	linker	UNP Q401N2
E	458	TYR	-	linker	UNP Q401N2
E	459	LYS	-	linker	UNP Q401N2

Continued on next page...

Continued from previous page...

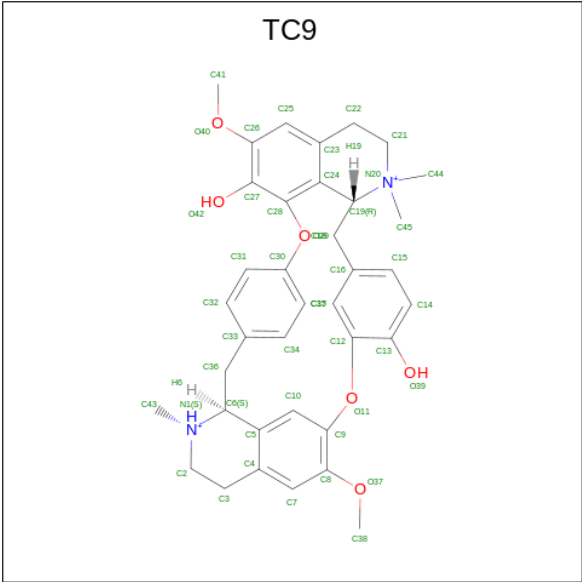
Chain	Residue	Modelled	Actual	Comment	Reference
E	460	ASP	-	linker	UNP Q401N2
E	461	ASP	-	linker	UNP Q401N2
E	462	ASP	-	linker	UNP Q401N2
E	463	ASP	-	linker	UNP Q401N2
E	464	LYS	-	linker	UNP Q401N2
E	465	SER	-	linker	UNP Q401N2
E	466	ARG	-	linker	UNP Q401N2
E	467	MET	-	linker	UNP Q401N2

- Molecule 2 is an oligosaccharide called beta-D-mannopyranose-(1-4)-2-acetamido-2-deoxy-beta-D-glucopyranose-(1-4)-2-acetamido-2-deoxy-beta-D-glucopyranose.



Mol	Chain	Residues	Atoms				AltConf	Trace
2	F	3	Total	C	N	O	0	0
			39	22	2	15		
2	G	3	Total	C	N	O	0	0
			39	22	2	15		
2	H	3	Total	C	N	O	0	0
			39	22	2	15		
2	I	3	Total	C	N	O	0	0
			39	22	2	15		
2	J	3	Total	C	N	O	0	0
			39	22	2	15		
2	K	3	Total	C	N	O	0	0
			39	22	2	15		
2	L	3	Total	C	N	O	0	0
			39	22	2	15		
2	M	3	Total	C	N	O	0	0
			39	22	2	15		
2	N	3	Total	C	N	O	0	0
			39	22	2	15		
2	O	3	Total	C	N	O	0	0
			39	22	2	15		

- Molecule 3 is D-TUBOCURARINE (CCD ID: TC9) (formula: $C_{37}H_{42}N_2O_6$) (labeled as "Ligand of Interest" by depositor).

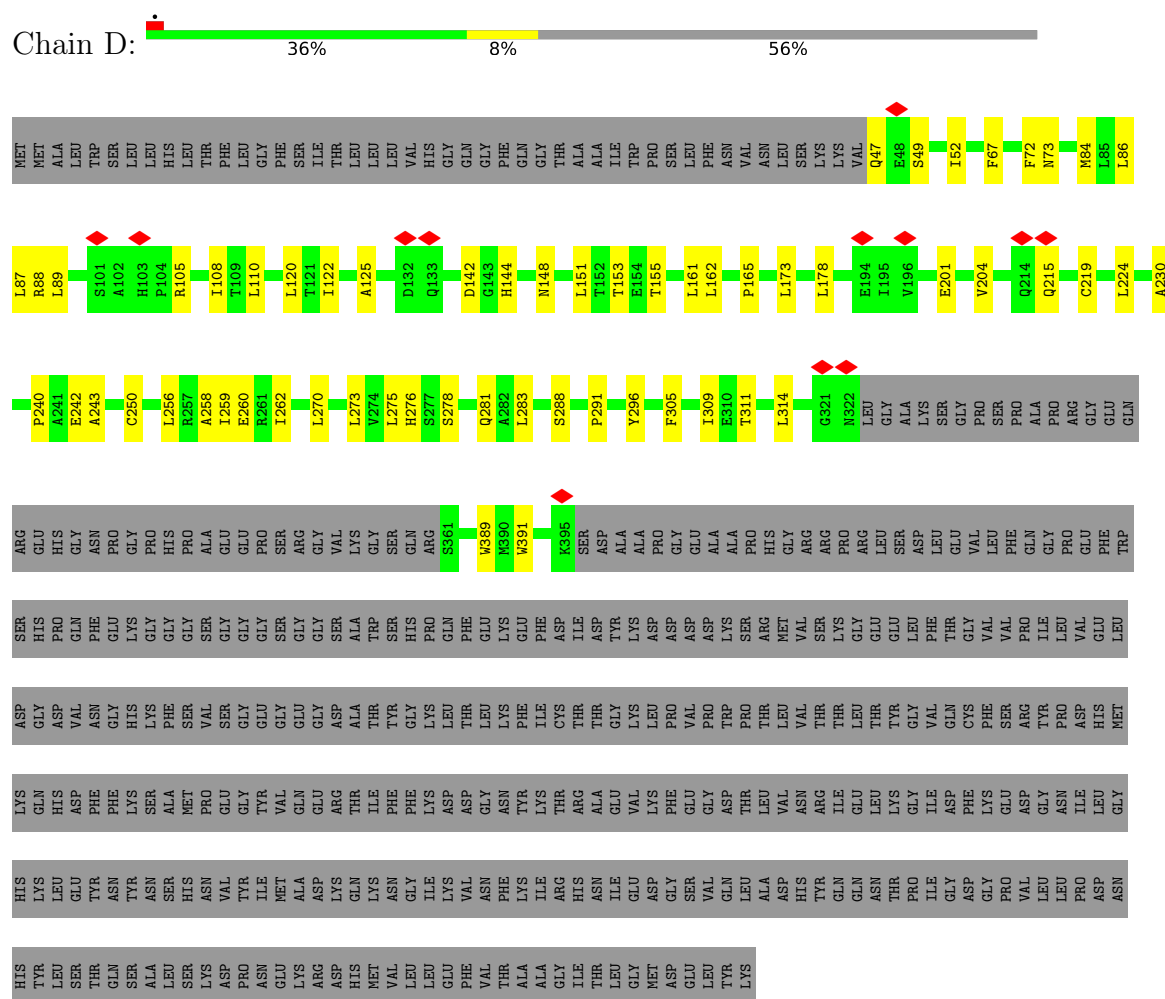


Mol	Chain	Residues	Atoms				AltConf
3	D	1	Total	C	N	O	0
			45	37	2	6	
3	B	1	Total	C	N	O	0
			45	37	2	6	

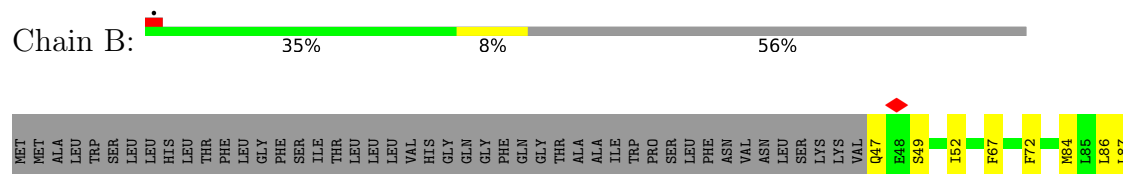
3 Residue-property plots

These plots are drawn for all protein, RNA, DNA and oligosaccharide chains in the entry. The first graphic for a chain summarises the proportions of the various outlier classes displayed in the second graphic. The second graphic shows the sequence view annotated by issues in geometry and atom inclusion in map density. Residues are color-coded according to the number of geometric quality criteria for which they contain at least one outlier: green = 0, yellow = 1, orange = 2 and red = 3 or more. A red diamond above a residue indicates a poor fit to the EM map for this residue (all-atom inclusion < 40%). Stretches of 2 or more consecutive residues without any outlier are shown as a green connector. Residues present in the sample, but not in the model, are shown in grey.

- Molecule 1: Ligand-gated cation channel ZACN,Genome polypeptide



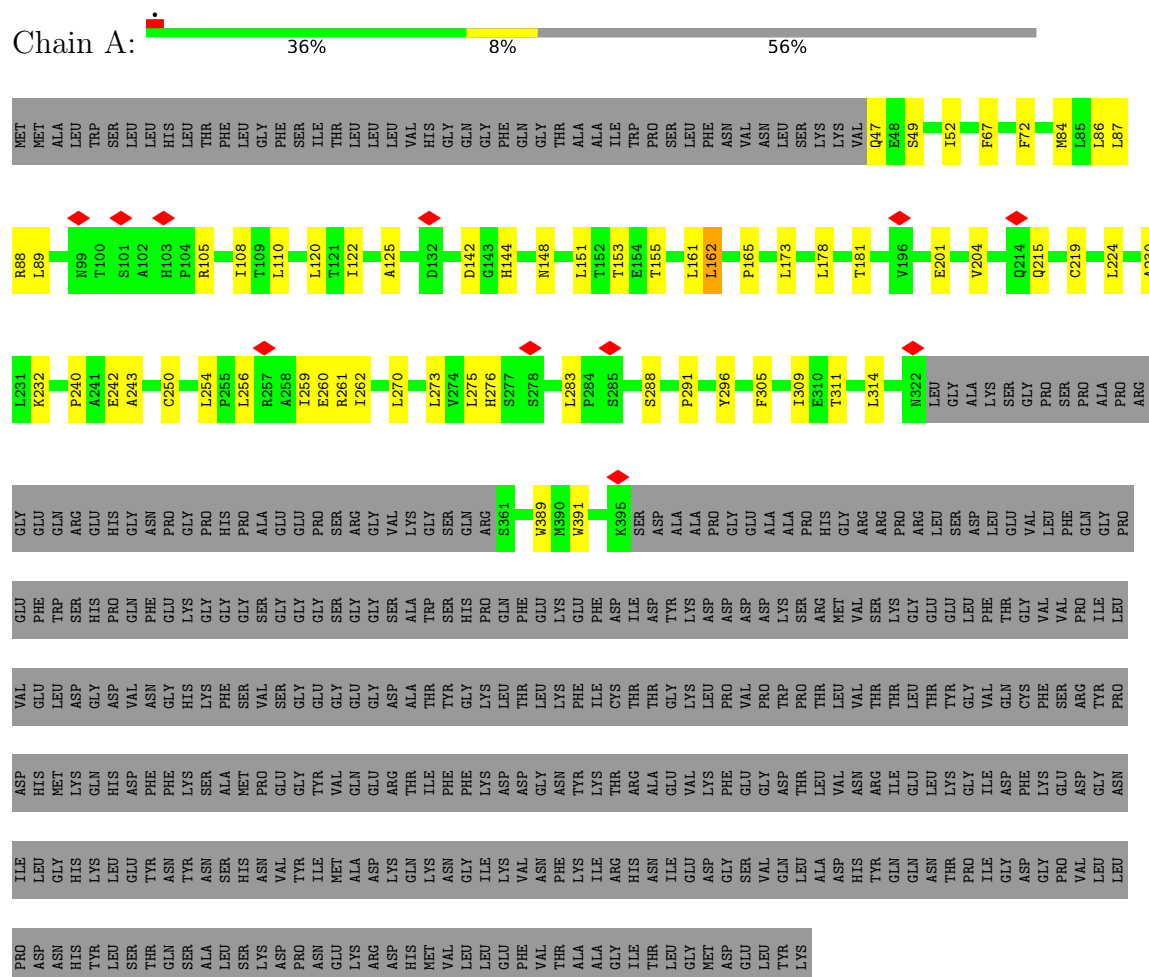
- Molecule 1: Ligand-gated cation channel ZACN,Genome polypeptide



THR
GLN
SER
ALA
LEU
LEU
SER
LVS
ASP
PRO
GLU
GLU
LVS
ASP
HIS
MET
VAL
THR
LEU
GLU
PHE
VAL
THR
ALA
ALA
GLY
ILE
THR
LEU
GLY
MET
ASP
GLU
LEU
TYR
LVS

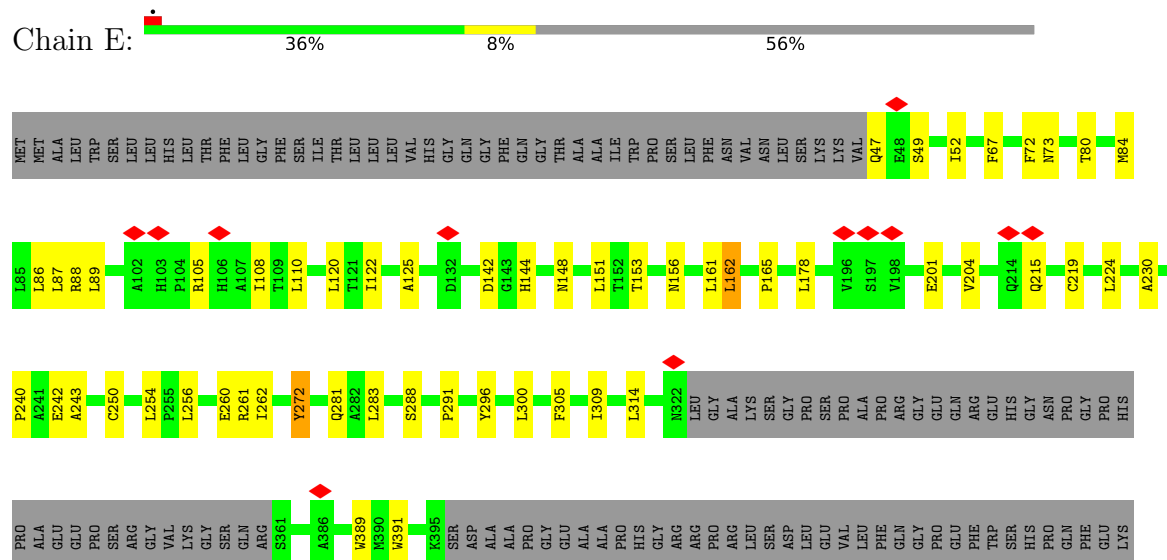
• Molecule 1: Ligand-gated cation channel ZACN,Genome polyprotein

Chain A:



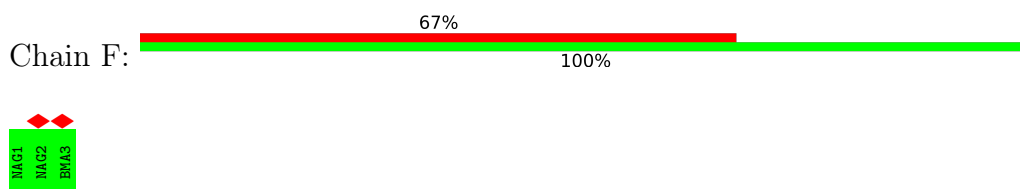
• Molecule 1: Ligand-gated cation channel ZACN,Genome polyprotein

Chain E:

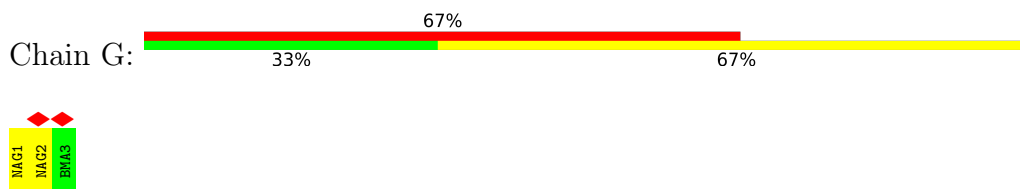


[illegible]

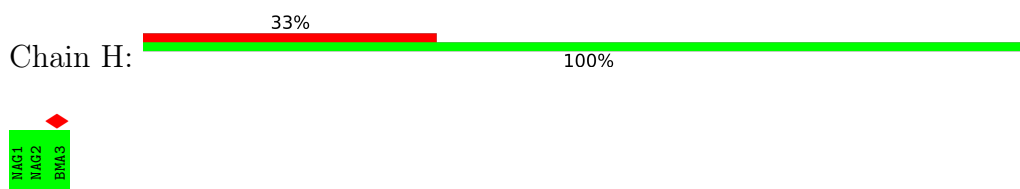
- Molecule 2: beta-D-mannopyranose-(1-4)-2-acetamido-2-deoxy-beta-D-glucopyranose-(1-4)-2-acetamido-2-deoxy-beta-D-glucopyranose



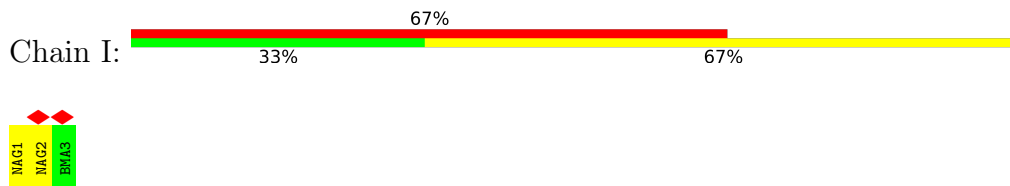
- Molecule 2: beta-D-mannopyranose-(1-4)-2-acetamido-2-deoxy-beta-D-glucopyranose-(1-4)-2-acetamido-2-deoxy-beta-D-glucopyranose



- Molecule 2: beta-D-mannopyranose-(1-4)-2-acetamido-2-deoxy-beta-D-glucopyranose-(1-4)-2-acetamido-2-deoxy-beta-D-glucopyranose



- Molecule 2: beta-D-mannopyranose-(1-4)-2-acetamido-2-deoxy-beta-D-glucopyranose-(1-4)-2-acetamido-2-deoxy-beta-D-glucopyranose



- Molecule 2: beta-D-mannopyranose-(1-4)-2-acetamido-2-deoxy-beta-D-glucopyranose-(1-4)-2-acetamido-2-deoxy-beta-D-glucopyranose



- Molecule 2: beta-D-mannopyranose-(1-4)-2-acetamido-2-deoxy-beta-D-glucopyranose-(1-4)-2-acetamido-2-deoxy-beta-D-glucopyranose



- Molecule 2: beta-D-mannopyranose-(1-4)-2-acetamido-2-deoxy-beta-D-glucopyranose-(1-4)-2-acetamido-2-deoxy-beta-D-glucopyranose



- Molecule 2: beta-D-mannopyranose-(1-4)-2-acetamido-2-deoxy-beta-D-glucopyranose-(1-4)-2-acetamido-2-deoxy-beta-D-glucopyranose



- Molecule 2: beta-D-mannopyranose-(1-4)-2-acetamido-2-deoxy-beta-D-glucopyranose-(1-4)-2-acetamido-2-deoxy-beta-D-glucopyranose



- Molecule 2: beta-D-mannopyranose-(1-4)-2-acetamido-2-deoxy-beta-D-glucopyranose-(1-4)-2-acetamido-2-deoxy-beta-D-glucopyranose



4 Experimental information

Property	Value	Source
EM reconstruction method	SINGLE PARTICLE	Depositor
Imposed symmetry	POINT, Not provided	
Number of particles used	68294	Depositor
Resolution determination method	FSC 0.143 CUT-OFF	Depositor
CTF correction method	PHASE FLIPPING AND AMPLITUDE CORRECTION	Depositor
Microscope	TFS KRIOS	Depositor
Voltage (kV)	300	Depositor
Electron dose ($e^-/\text{\AA}^2$)	50	Depositor
Minimum defocus (nm)	1500	Depositor
Maximum defocus (nm)	2000	Depositor
Magnification	Not provided	
Image detector	FEI FALCON IV (4k x 4k)	Depositor
Maximum map value	2.562	Depositor
Minimum map value	-1.598	Depositor
Average map value	0.000	Depositor
Map value standard deviation	0.083	Depositor
Recommended contour level	0.3	Depositor
Map size (Å)	279.6, 279.6, 279.6	wwPDB
Map dimensions	300, 300, 300	wwPDB
Map angles (°)	90.0, 90.0, 90.0	wwPDB
Pixel spacing (Å)	0.93200004, 0.93200004, 0.93200004	Depositor

5 Model quality [i](#)

5.1 Standard geometry [i](#)

Bond lengths and bond angles in the following residue types are not validated in this section: BMA, TC9, NAG

The Z score for a bond length (or angle) is the number of standard deviations the observed value is removed from the expected value. A bond length (or angle) with $|Z| > 5$ is considered an outlier worth inspection. RMSZ is the root-mean-square of all Z scores of the bond lengths (or angles).

Mol	Chain	Bond lengths		Bond angles	
		RMSZ	# $ Z > 5$	RMSZ	# $ Z > 5$
1	A	0.37	0/2530	0.54	5/3464 (0.1%)
1	B	0.42	0/2530	0.58	6/3464 (0.2%)
1	C	0.36	0/2530	0.54	3/3464 (0.1%)
1	D	0.41	0/2530	0.56	3/3464 (0.1%)
1	E	0.45	1/2530 (0.0%)	0.55	4/3464 (0.1%)
All	All	0.40	1/12650 (0.0%)	0.55	21/17320 (0.1%)

All (1) bond length outliers are listed below:

Mol	Chain	Res	Type	Atoms	Z	Observed(Å)	Ideal(Å)
1	E	272	TYR	CA-C	-6.16	1.44	1.52

The worst 5 of 21 bond angle outliers are listed below:

Mol	Chain	Res	Type	Atoms	Z	Observed(°)	Ideal(°)
1	B	276	HIS	N-CA-C	-7.67	102.47	112.68
1	B	391	TRP	N-CA-C	6.78	118.82	109.54
1	E	391	TRP	N-CA-C	6.77	118.82	109.54
1	D	391	TRP	N-CA-C	6.75	118.79	109.54
1	C	391	TRP	N-CA-C	6.74	118.78	109.54

There are no chirality outliers.

There are no planarity outliers.

5.2 Too-close contacts [i](#)

In the following table, the Non-H and H(model) columns list the number of non-hydrogen atoms and hydrogen atoms in the chain respectively. The H(added) column lists the number of hydrogen atoms added and optimized by MolProbity. The Clashes column lists the number of clashes within

the asymmetric unit, whereas Symm-Clashes lists symmetry-related clashes.

Mol	Chain	Non-H	H(model)	H(added)	Clashes	Symm-Clashes
1	A	2470	0	2513	47	0
1	B	2470	0	2513	50	0
1	C	2470	0	2513	44	0
1	D	2470	0	2513	48	0
1	E	2470	0	2513	46	0
2	F	39	0	34	0	0
2	G	39	0	34	0	0
2	H	39	0	34	0	0
2	I	39	0	34	0	0
2	J	39	0	34	0	0
2	K	39	0	34	0	0
2	L	39	0	34	0	0
2	M	39	0	34	0	0
2	N	39	0	34	0	0
2	O	39	0	34	0	0
3	B	45	0	42	4	0
3	D	45	0	42	5	0
All	All	12830	0	12989	180	0

The all-atom clashscore is defined as the number of clashes found per 1000 atoms (including hydrogen atoms). The all-atom clashscore for this structure is 7.

The worst 5 of 180 close contacts within the same asymmetric unit are listed below, sorted by their clash magnitude.

Atom-1	Atom-2	Interatomic distance (Å)	Clash overlap (Å)
1:A:201:GLU:HG3	1:A:230:ALA:HB2	1.62	0.82
1:A:148:ASN:HD21	1:E:178:LEU:HB3	1.44	0.81
1:E:201:GLU:HG3	1:E:230:ALA:HB2	1.62	0.81
1:C:201:GLU:HG3	1:C:230:ALA:HB2	1.62	0.81
1:B:201:GLU:HG3	1:B:230:ALA:HB2	1.62	0.81

There are no symmetry-related clashes.

5.3 Torsion angles ⓘ

5.3.1 Protein backbone ⓘ

In the following table, the Percentiles column shows the percent Ramachandran outliers of the chain as a percentile score with respect to all PDB entries followed by that with respect to all EM entries.

The Analysed column shows the number of residues for which the backbone conformation was analysed, and the total number of residues.

Mol	Chain	Analysed	Favoured	Allowed	Outliers	Percentiles	
1	A	307/705 (44%)	296 (96%)	11 (4%)	0	100	100
1	B	307/705 (44%)	294 (96%)	13 (4%)	0	100	100
1	C	307/705 (44%)	296 (96%)	11 (4%)	0	100	100
1	D	307/705 (44%)	298 (97%)	9 (3%)	0	100	100
1	E	307/705 (44%)	296 (96%)	11 (4%)	0	100	100
All	All	1535/3525 (44%)	1480 (96%)	55 (4%)	0	100	100

There are no Ramachandran outliers to report.

5.3.2 Protein sidechains ⓘ

In the following table, the Percentiles column shows the percent sidechain outliers of the chain as a percentile score with respect to all PDB entries followed by that with respect to all EM entries.

The Analysed column shows the number of residues for which the sidechain conformation was analysed, and the total number of residues.

Mol	Chain	Analysed	Rotameric	Outliers	Percentiles	
1	A	277/610 (45%)	277 (100%)	0	100	100
1	B	277/610 (45%)	277 (100%)	0	100	100
1	C	277/610 (45%)	277 (100%)	0	100	100
1	D	277/610 (45%)	277 (100%)	0	100	100
1	E	277/610 (45%)	277 (100%)	0	100	100
All	All	1385/3050 (45%)	1385 (100%)	0	100	100

There are no protein residues with a non-rotameric sidechain to report.

Sometimes sidechains can be flipped to improve hydrogen bonding and reduce clashes. 5 of 27 such sidechains are listed below:

Mol	Chain	Res	Type
1	C	215	GLN
1	A	73	ASN
1	E	148	ASN
1	A	47	GLN
1	A	103	HIS

5.3.3 RNA ⓘ

There are no RNA molecules in this entry.

5.4 Non-standard residues in protein, DNA, RNA chains ⓘ

There are no non-standard protein/DNA/RNA residues in this entry.

5.5 Carbohydrates ⓘ

30 monosaccharides are modelled in this entry.

In the following table, the Counts columns list the number of bonds (or angles) for which Mogul statistics could be retrieved, the number of bonds (or angles) that are observed in the model and the number of bonds (or angles) that are defined in the Chemical Component Dictionary. The Link column lists molecule types, if any, to which the group is linked. The Z score for a bond length (or angle) is the number of standard deviations the observed value is removed from the expected value. A bond length (or angle) with $|Z| > 2$ is considered an outlier worth inspection. RMSZ is the root-mean-square of all Z scores of the bond lengths (or angles).

Mol	Type	Chain	Res	Link	Bond lengths			Bond angles		
					Counts	RMSZ	$\# Z > 2$	Counts	RMSZ	$\# Z > 2$
2	NAG	F	1	2,1	14,14,15	0.46	0	17,19,21	0.70	0
2	NAG	F	2	2	14,14,15	0.36	0	17,19,21	0.77	0
2	BMA	F	3	2	11,11,12	0.25	0	15,15,17	0.64	0
2	NAG	G	1	2,1	14,14,15	0.36	0	17,19,21	0.67	1 (5%)
2	NAG	G	2	2	14,14,15	0.31	0	17,19,21	1.33	2 (11%)
2	BMA	G	3	2	11,11,12	0.21	0	15,15,17	0.64	0
2	NAG	H	1	2,1	14,14,15	0.46	0	17,19,21	0.71	0
2	NAG	H	2	2	14,14,15	0.35	0	17,19,21	0.78	0
2	BMA	H	3	2	11,11,12	0.24	0	15,15,17	0.64	0
2	NAG	I	1	2,1	14,14,15	0.38	0	17,19,21	0.67	1 (5%)
2	NAG	I	2	2	14,14,15	0.31	0	17,19,21	1.33	2 (11%)
2	BMA	I	3	2	11,11,12	0.21	0	15,15,17	0.64	0
2	NAG	J	1	2,1	14,14,15	0.46	0	17,19,21	0.70	0
2	NAG	J	2	2	14,14,15	0.35	0	17,19,21	0.78	0
2	BMA	J	3	2	11,11,12	0.25	0	15,15,17	0.64	0
2	NAG	K	1	2,1	14,14,15	0.37	0	17,19,21	0.67	1 (5%)
2	NAG	K	2	2	14,14,15	0.31	0	17,19,21	1.33	2 (11%)
2	BMA	K	3	2	11,11,12	0.21	0	15,15,17	0.63	0
2	NAG	L	1	2,1	14,14,15	0.46	0	17,19,21	0.71	0
2	NAG	L	2	2	14,14,15	0.35	0	17,19,21	0.78	0
2	BMA	L	3	2	11,11,12	0.25	0	15,15,17	0.64	0

Mol	Type	Chain	Res	Link	Bond lengths			Bond angles		
					Counts	RMSZ	# Z > 2	Counts	RMSZ	# Z > 2
2	NAG	M	1	2,1	14,14,15	0.36	0	17,19,21	0.67	1 (5%)
2	NAG	M	2	2	14,14,15	0.30	0	17,19,21	1.33	2 (11%)
2	BMA	M	3	2	11,11,12	0.21	0	15,15,17	0.64	0
2	NAG	N	1	2,1	14,14,15	0.47	0	17,19,21	0.70	0
2	NAG	N	2	2	14,14,15	0.36	0	17,19,21	0.78	0
2	BMA	N	3	2	11,11,12	0.25	0	15,15,17	0.64	0
2	NAG	O	1	2,1	14,14,15	0.36	0	17,19,21	0.67	1 (5%)
2	NAG	O	2	2	14,14,15	0.31	0	17,19,21	1.33	2 (11%)
2	BMA	O	3	2	11,11,12	0.22	0	15,15,17	0.63	0

In the following table, the Chirals column lists the number of chiral outliers, the number of chiral centers analysed, the number of these observed in the model and the number defined in the Chemical Component Dictionary. Similar counts are reported in the Torsion and Rings columns. '-' means no outliers of that kind were identified.

Mol	Type	Chain	Res	Link	Chirals	Torsions	Rings
2	NAG	F	1	2,1	-	0/6/23/26	0/1/1/1
2	NAG	F	2	2	-	2/6/23/26	0/1/1/1
2	BMA	F	3	2	-	1/2/19/22	0/1/1/1
2	NAG	G	1	2,1	-	2/6/23/26	0/1/1/1
2	NAG	G	2	2	-	0/6/23/26	0/1/1/1
2	BMA	G	3	2	-	0/2/19/22	0/1/1/1
2	NAG	H	1	2,1	-	0/6/23/26	0/1/1/1
2	NAG	H	2	2	-	2/6/23/26	0/1/1/1
2	BMA	H	3	2	-	1/2/19/22	0/1/1/1
2	NAG	I	1	2,1	-	2/6/23/26	0/1/1/1
2	NAG	I	2	2	-	0/6/23/26	0/1/1/1
2	BMA	I	3	2	-	0/2/19/22	0/1/1/1
2	NAG	J	1	2,1	-	0/6/23/26	0/1/1/1
2	NAG	J	2	2	-	2/6/23/26	0/1/1/1
2	BMA	J	3	2	-	1/2/19/22	0/1/1/1
2	NAG	K	1	2,1	-	2/6/23/26	0/1/1/1
2	NAG	K	2	2	-	0/6/23/26	0/1/1/1
2	BMA	K	3	2	-	0/2/19/22	0/1/1/1
2	NAG	L	1	2,1	-	0/6/23/26	0/1/1/1
2	NAG	L	2	2	-	2/6/23/26	0/1/1/1
2	BMA	L	3	2	-	1/2/19/22	0/1/1/1
2	NAG	M	1	2,1	-	2/6/23/26	0/1/1/1
2	NAG	M	2	2	-	0/6/23/26	0/1/1/1
2	BMA	M	3	2	-	0/2/19/22	0/1/1/1

Continued on next page...

Continued from previous page...

Mol	Type	Chain	Res	Link	Chirals	Torsions	Rings
2	NAG	N	1	2,1	-	0/6/23/26	0/1/1/1
2	NAG	N	2	2	-	2/6/23/26	0/1/1/1
2	BMA	N	3	2	-	1/2/19/22	0/1/1/1
2	NAG	O	1	2,1	-	2/6/23/26	0/1/1/1
2	NAG	O	2	2	-	0/6/23/26	0/1/1/1
2	BMA	O	3	2	-	0/2/19/22	0/1/1/1

There are no bond length outliers.

The worst 5 of 15 bond angle outliers are listed below:

Mol	Chain	Res	Type	Atoms	Z	Observed(°)	Ideal(°)
2	O	2	NAG	C4-C3-C2	-3.35	106.11	111.02
2	I	2	NAG	C4-C3-C2	-3.34	106.13	111.02
2	G	2	NAG	C4-C3-C2	-3.33	106.14	111.02
2	K	2	NAG	C4-C3-C2	-3.32	106.15	111.02
2	M	2	NAG	C4-C3-C2	-3.31	106.16	111.02

There are no chirality outliers.

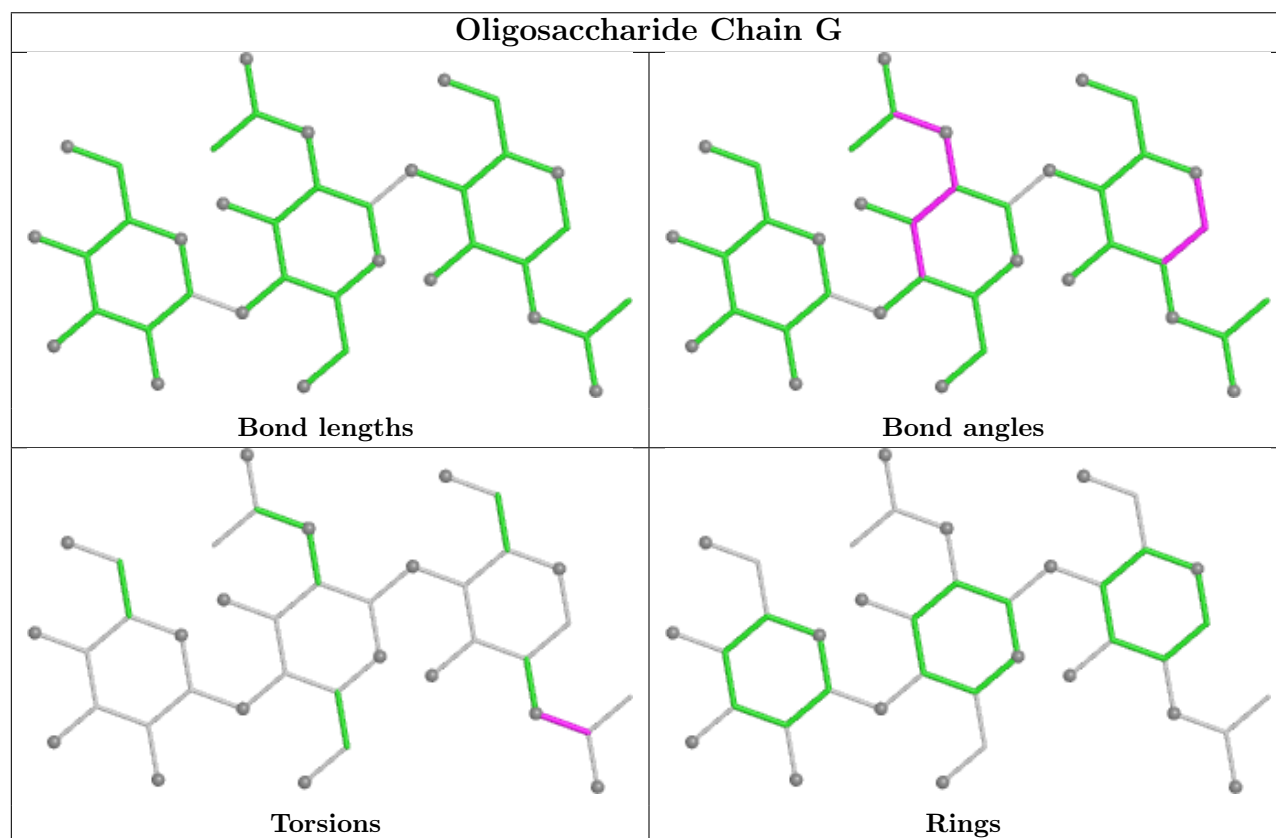
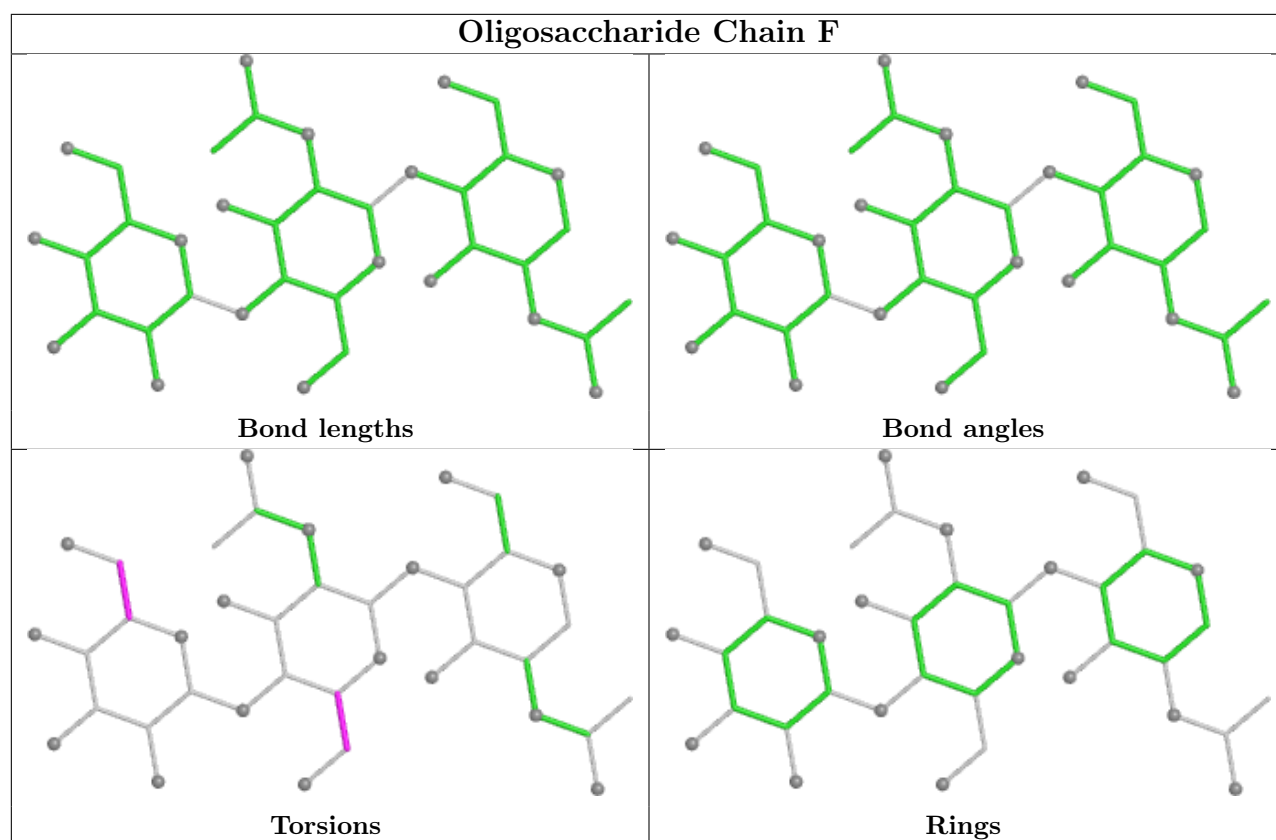
5 of 25 torsion outliers are listed below:

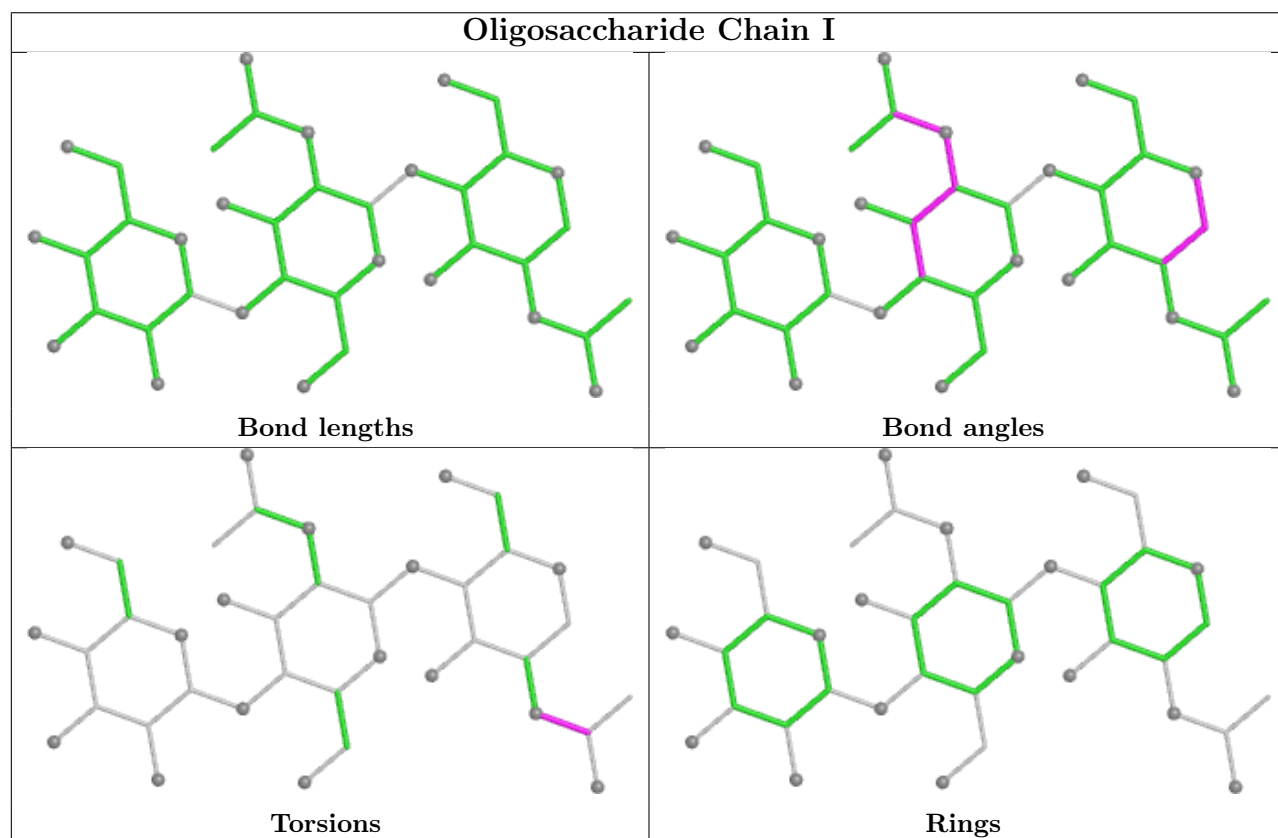
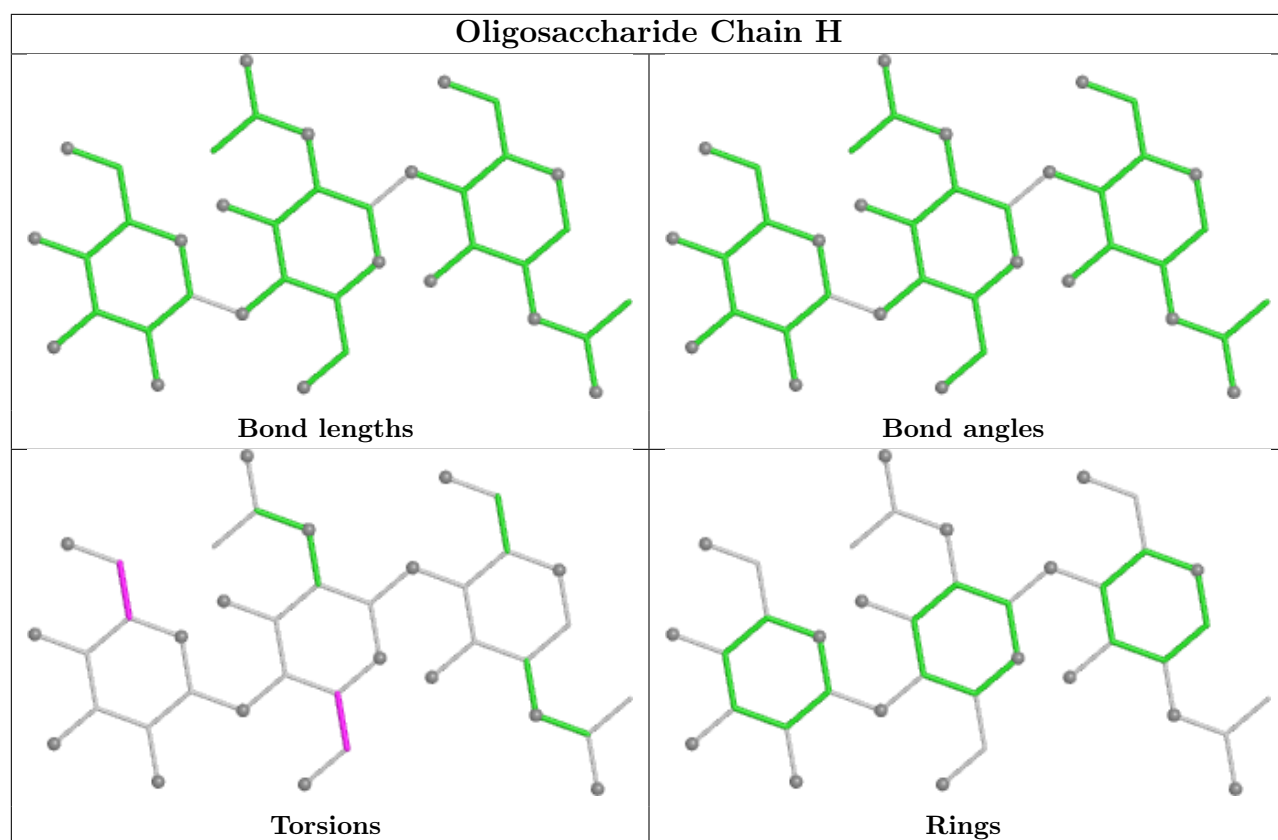
Mol	Chain	Res	Type	Atoms
2	G	1	NAG	C8-C7-N2-C2
2	G	1	NAG	O7-C7-N2-C2
2	I	1	NAG	C8-C7-N2-C2
2	I	1	NAG	O7-C7-N2-C2
2	K	1	NAG	C8-C7-N2-C2

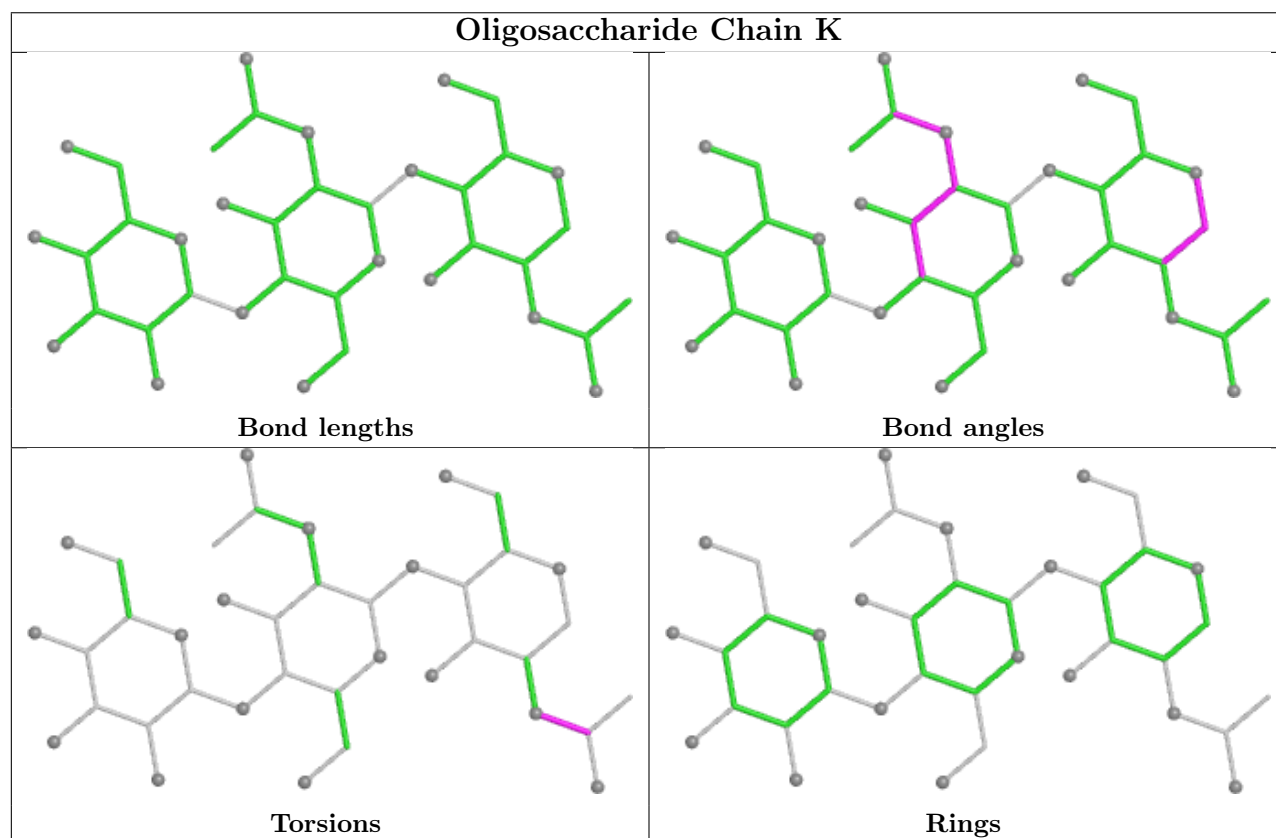
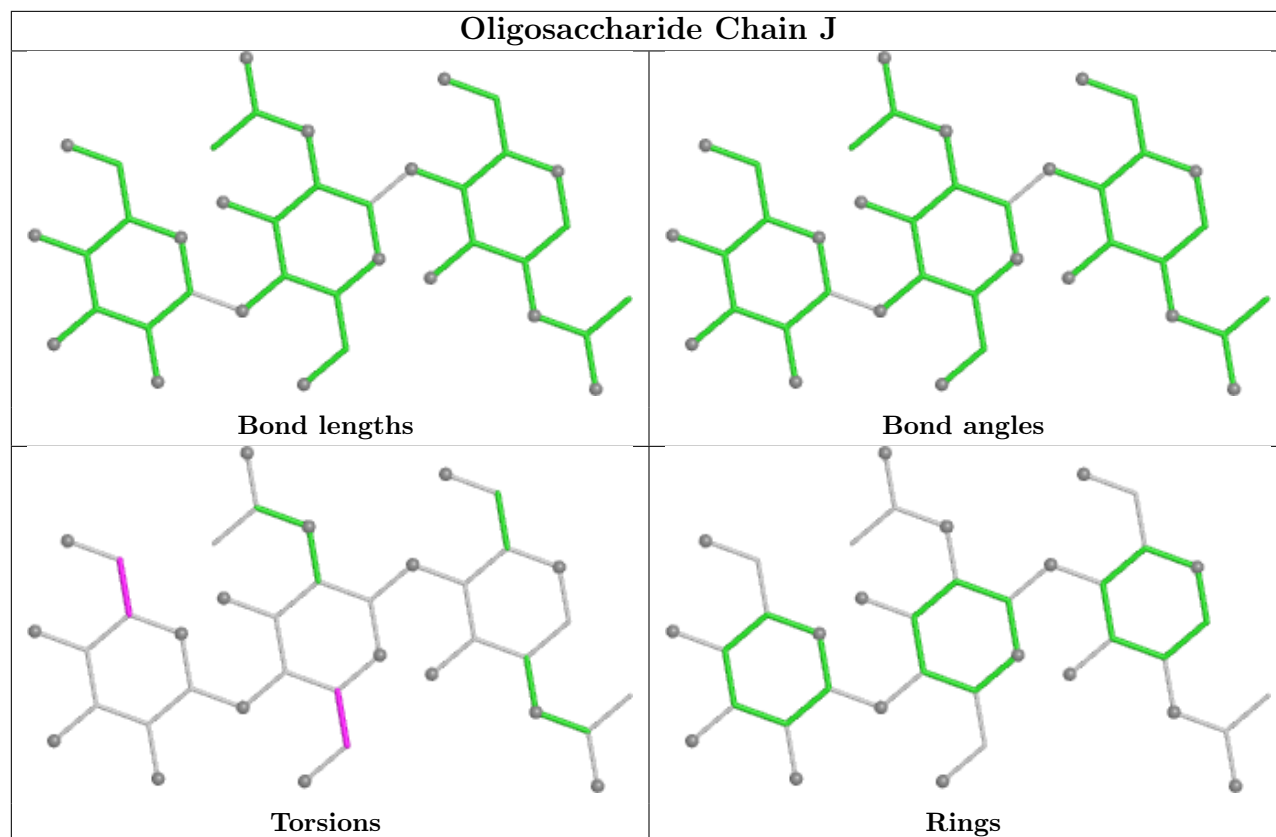
There are no ring outliers.

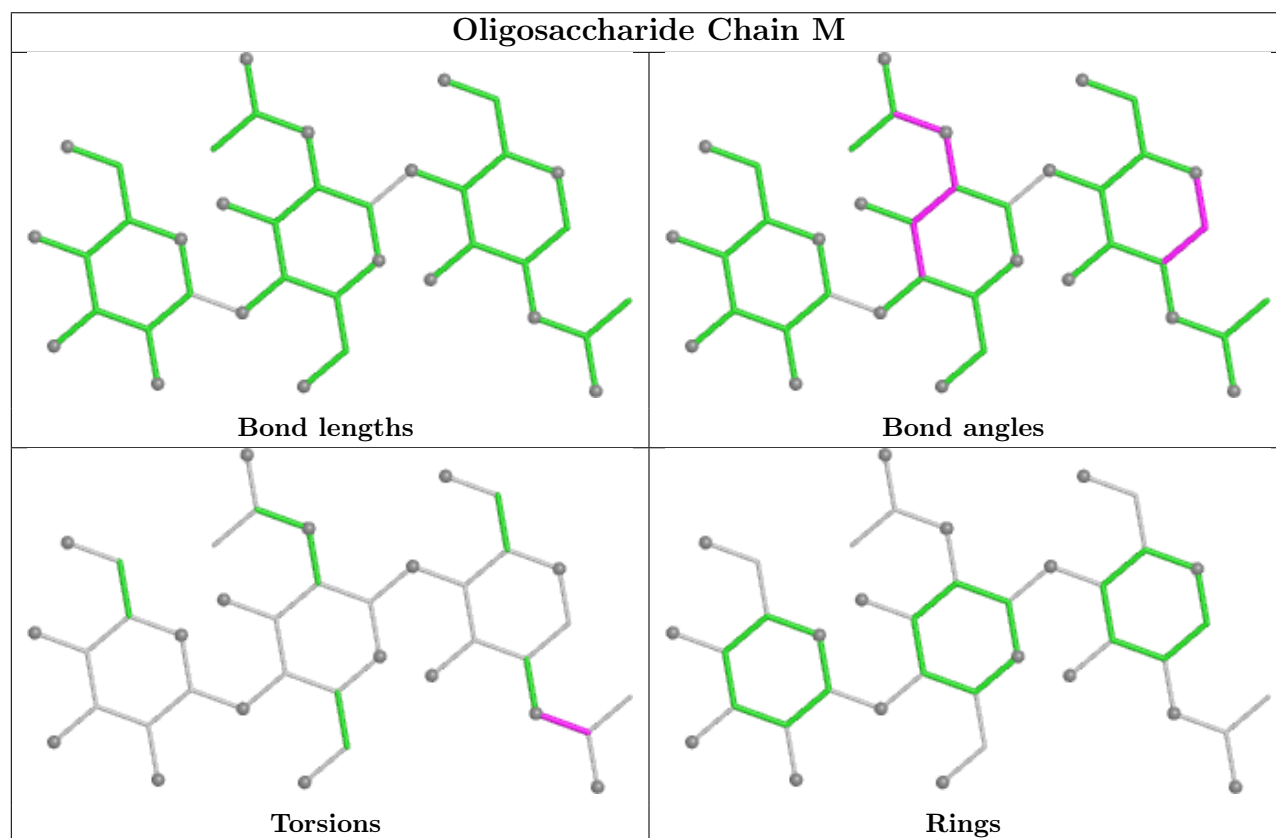
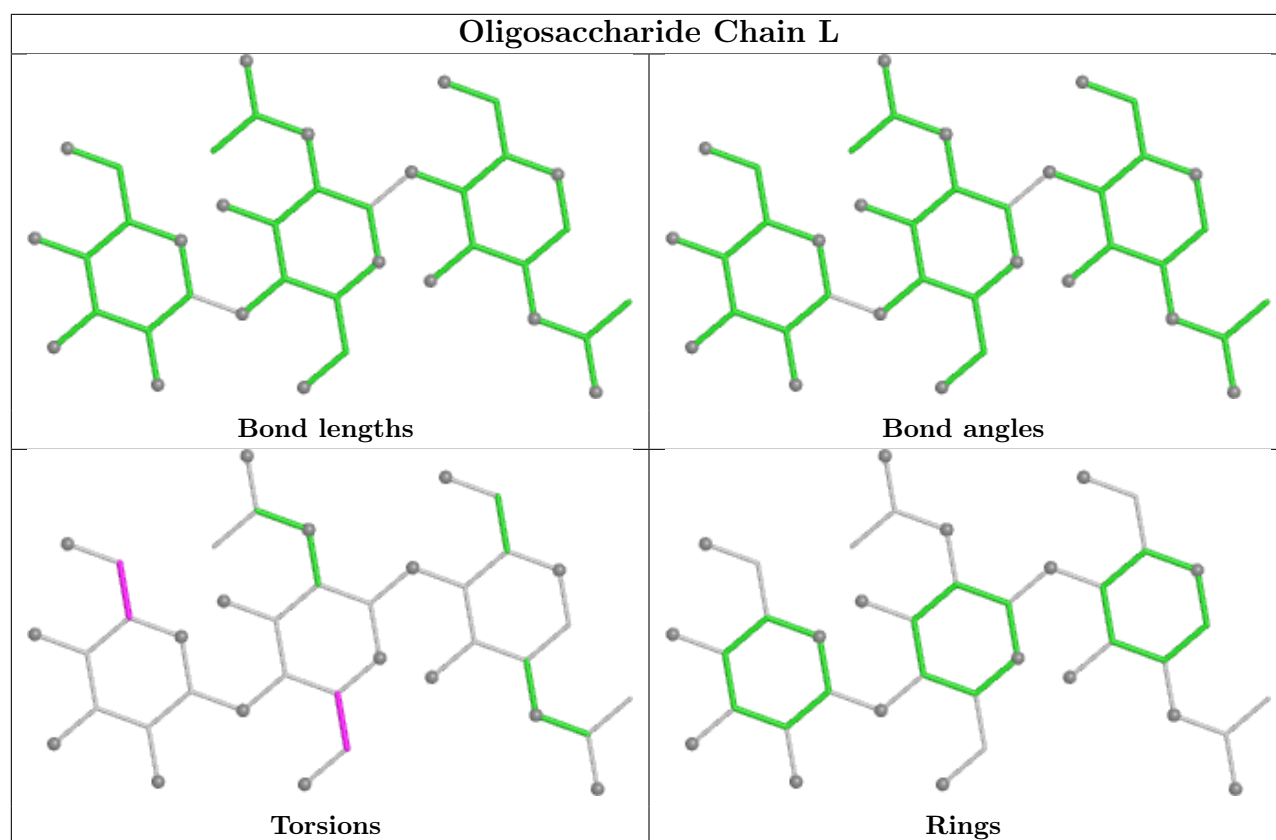
No monomer is involved in short contacts.

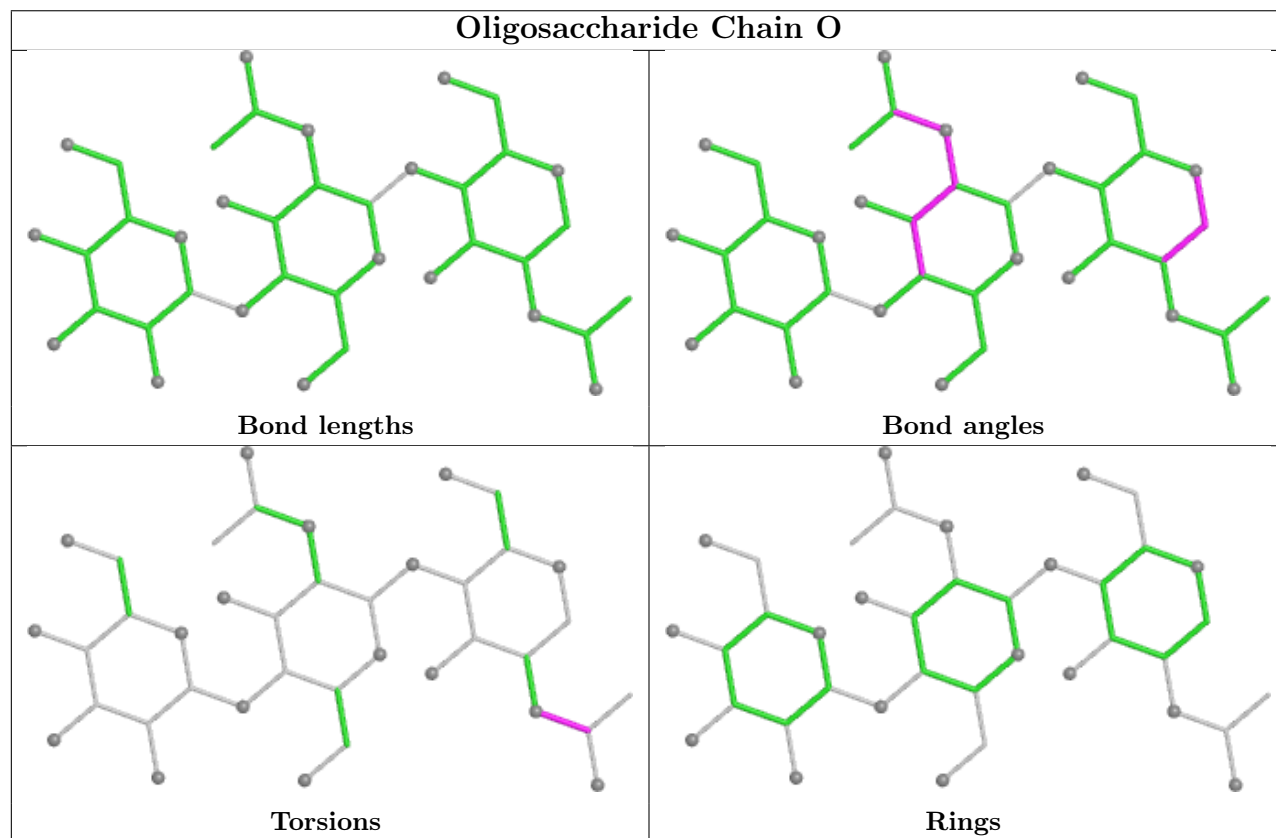
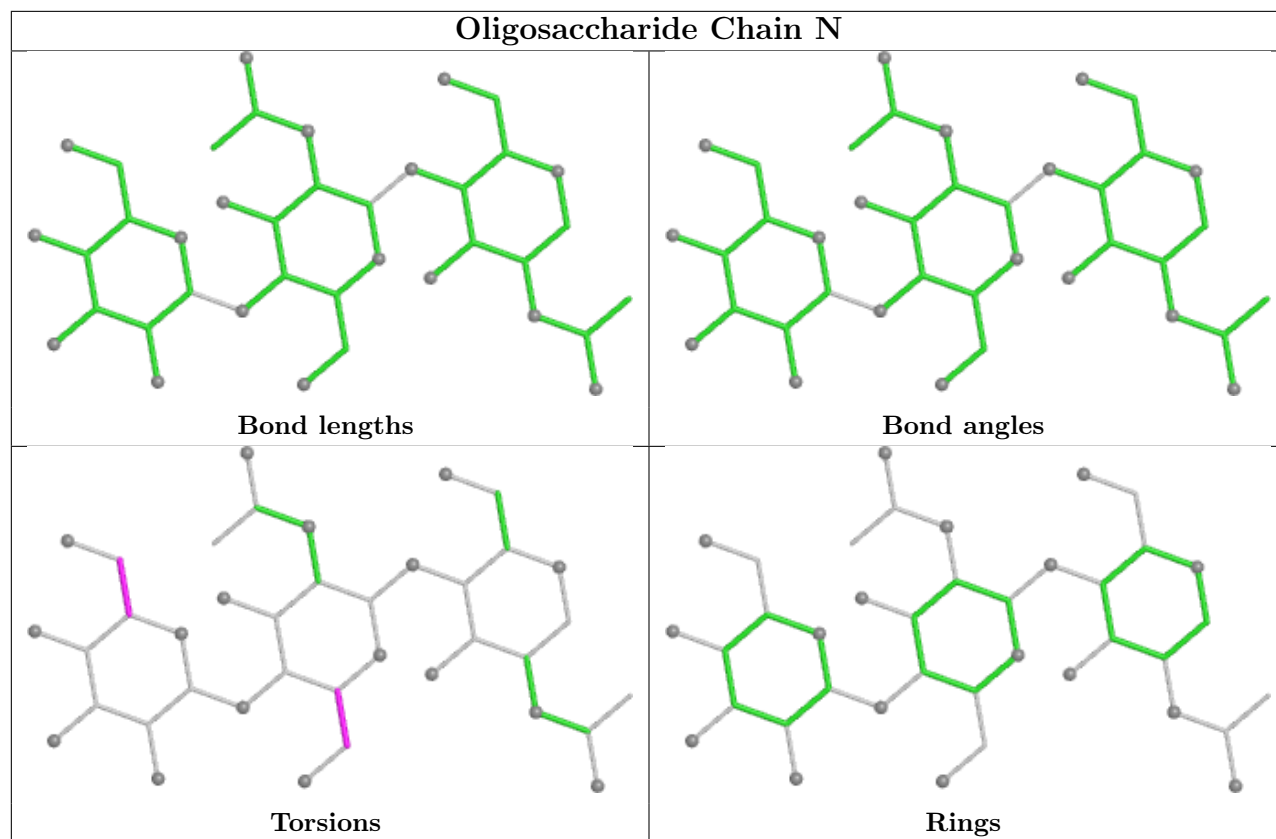
The following is a two-dimensional graphical depiction of Mogul quality analysis of bond lengths, bond angles, torsion angles, and ring geometry for oligosaccharide.











5.6 Ligand geometry

2 ligands are modelled in this entry.

In the following table, the Counts columns list the number of bonds (or angles) for which Mogul statistics could be retrieved, the number of bonds (or angles) that are observed in the model and the number of bonds (or angles) that are defined in the Chemical Component Dictionary. The Link column lists molecule types, if any, to which the group is linked. The Z score for a bond length (or angle) is the number of standard deviations the observed value is removed from the expected value. A bond length (or angle) with $|Z| > 2$ is considered an outlier worth inspection. RMSZ is the root-mean-square of all Z scores of the bond lengths (or angles).

Mol	Type	Chain	Res	Link	Bond lengths			Bond angles		
					Counts	RMSZ	# Z > 2	Counts	RMSZ	# Z > 2
3	TC9	D	801	-	50,51,51	2.79	18 (36%)	73,77,77	1.97	25 (34%)
3	TC9	B	801	-	50,51,51	2.90	18 (36%)	73,77,77	1.84	18 (24%)

In the following table, the Chirals column lists the number of chiral outliers, the number of chiral centers analysed, the number of these observed in the model and the number defined in the Chemical Component Dictionary. Similar counts are reported in the Torsion and Rings columns. '-' means no outliers of that kind were identified.

Mol	Type	Chain	Res	Link	Chirals	Torsions	Rings
3	TC9	D	801	-	-	9/20/49/49	-
3	TC9	B	801	-	-	11/20/49/49	-

The worst 5 of 36 bond length outliers are listed below:

Mol	Chain	Res	Type	Atoms	Z	Observed(Å)	Ideal(Å)
3	B	801	TC9	C17-C12	10.80	1.58	1.38
3	D	801	TC9	C17-C12	10.33	1.57	1.38
3	B	801	TC9	C35-C30	8.63	1.56	1.38
3	D	801	TC9	C35-C30	8.41	1.55	1.38
3	B	801	TC9	C18-C16	6.78	1.67	1.51

The worst 5 of 43 bond angle outliers are listed below:

Mol	Chain	Res	Type	Atoms	Z	Observed(°)	Ideal(°)
3	B	801	TC9	C34-C35-C30	-5.77	112.67	119.73
3	D	801	TC9	C34-C35-C30	-5.62	112.86	119.73
3	B	801	TC9	O40-C26-C27	5.41	120.00	114.54
3	D	801	TC9	O40-C26-C27	4.96	119.54	114.54
3	D	801	TC9	C12-C17-C16	-4.82	112.82	120.05

There are no chirality outliers.

5 of 20 torsion outliers are listed below:

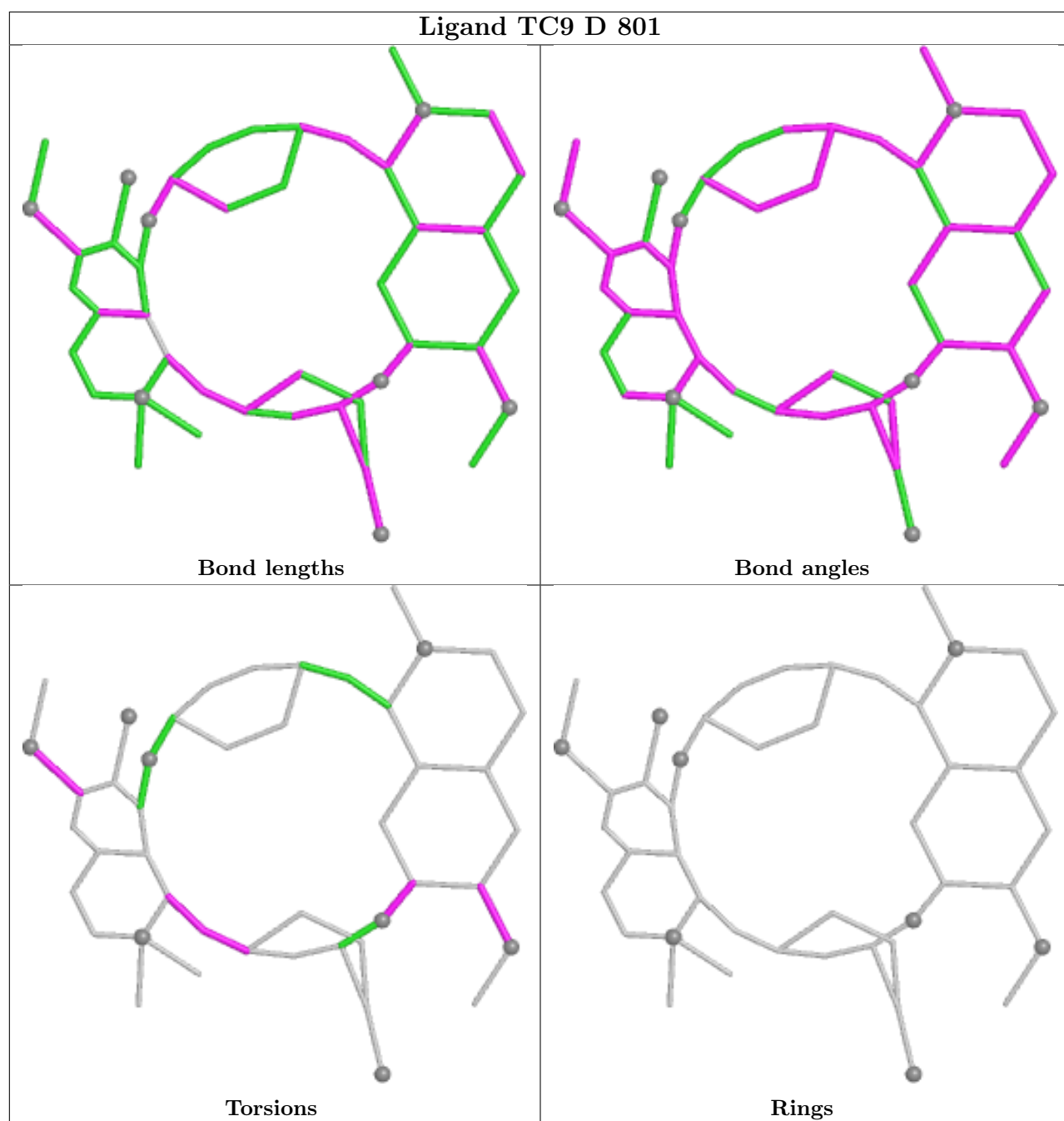
Mol	Chain	Res	Type	Atoms
3	B	801	TC9	C16-C18-C19-N20
3	B	801	TC9	C9-C8-O37-C38
3	B	801	TC9	C27-C26-O40-C41
3	D	801	TC9	C27-C26-O40-C41
3	B	801	TC9	C7-C8-O37-C38

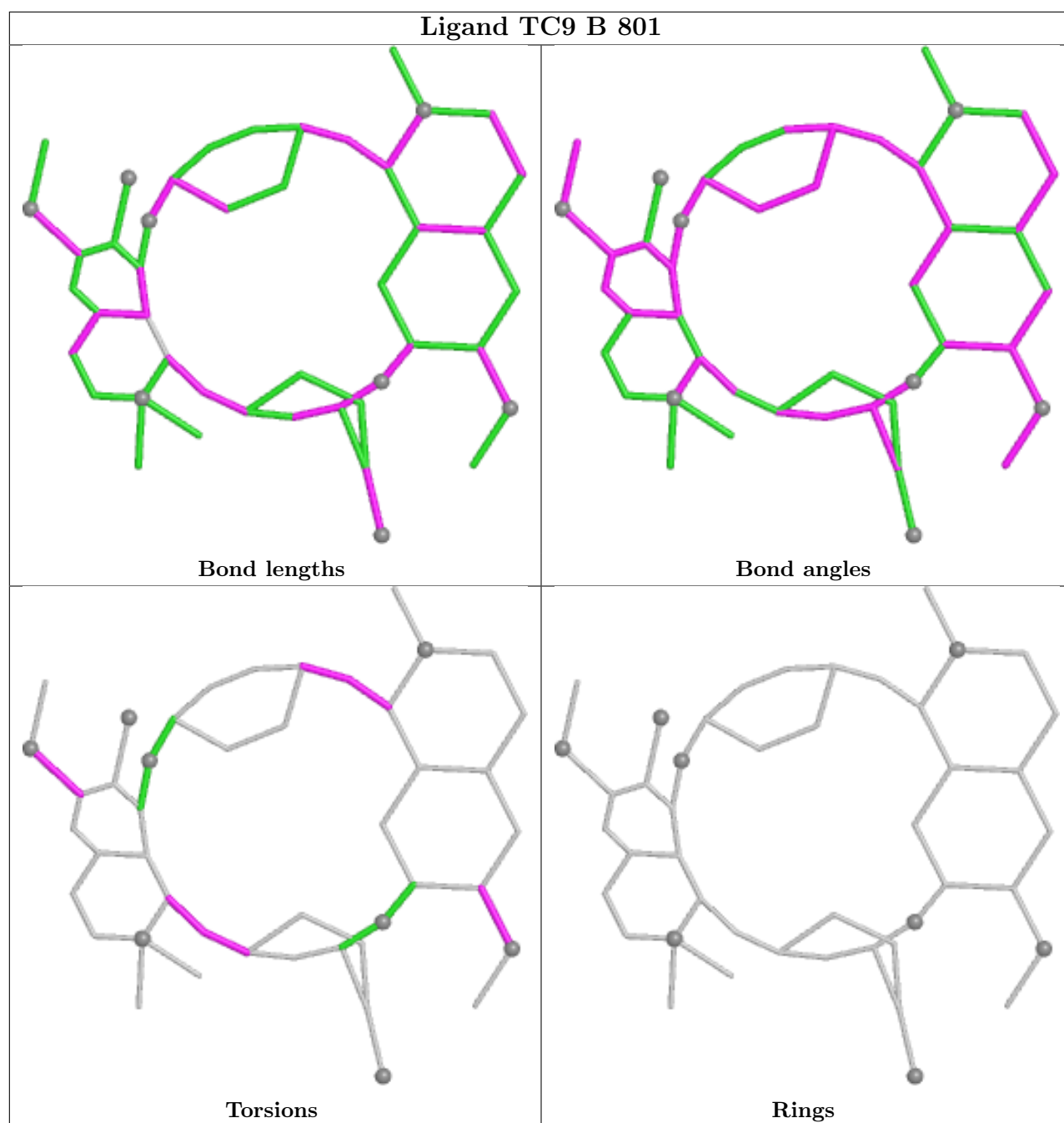
There are no ring outliers.

2 monomers are involved in 9 short contacts:

Mol	Chain	Res	Type	Clashes	Symm-Clashes
3	D	801	TC9	5	0
3	B	801	TC9	4	0

The following is a two-dimensional graphical depiction of Mogul quality analysis of bond lengths, bond angles, torsion angles, and ring geometry for all instances of the Ligand of Interest. In addition, ligands with molecular weight > 250 and outliers as shown on the validation Tables will also be included. For torsion angles, if less than 5% of the Mogul distribution of torsion angles is within 10 degrees of the torsion angle in question, then that torsion angle is considered an outlier. Any bond that is central to one or more torsion angles identified as an outlier by Mogul will be highlighted in the graph. For rings, the root-mean-square deviation (RMSD) between the ring in question and similar rings identified by Mogul is calculated over all ring torsion angles. If the average RMSD is greater than 60 degrees and the minimal RMSD between the ring in question and any Mogul-identified rings is also greater than 60 degrees, then that ring is considered an outlier. The outliers are highlighted in purple. The color gray indicates Mogul did not find sufficient equivalents in the CSD to analyse the geometry.





5.7 Other polymers [i](#)

There are no such residues in this entry.

5.8 Polymer linkage issues [i](#)

There are no chain breaks in this entry.

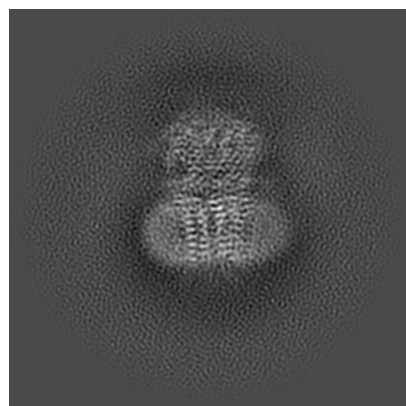
6 Map visualisation [i](#)

This section contains visualisations of the EMDB entry EMD-63037. These allow visual inspection of the internal detail of the map and identification of artifacts.

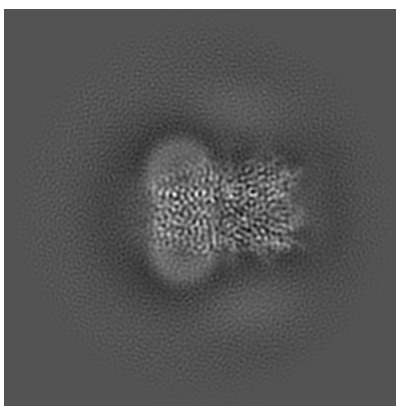
Images derived from a raw map, generated by summing the deposited half-maps, are presented below the corresponding image components of the primary map to allow further visual inspection and comparison with those of the primary map.

6.1 Orthogonal projections [i](#)

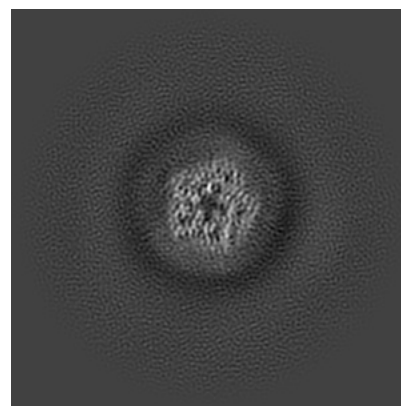
6.1.1 Primary map



X

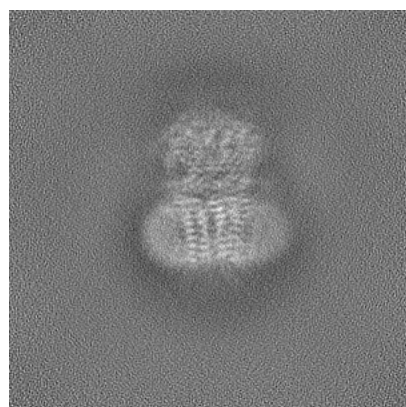


Y

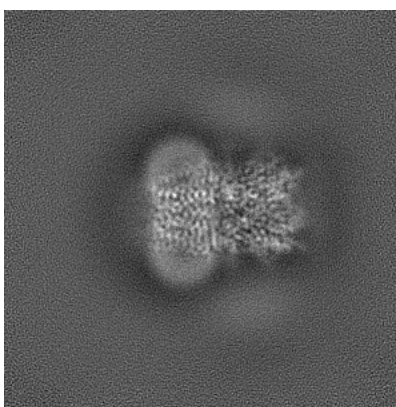


Z

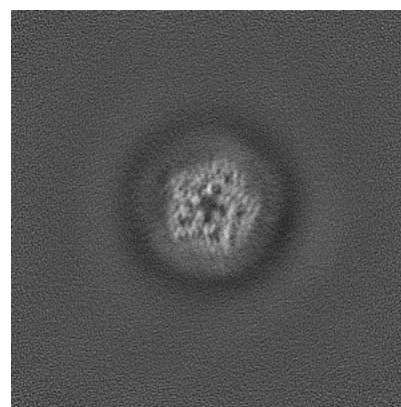
6.1.2 Raw map



X



Y

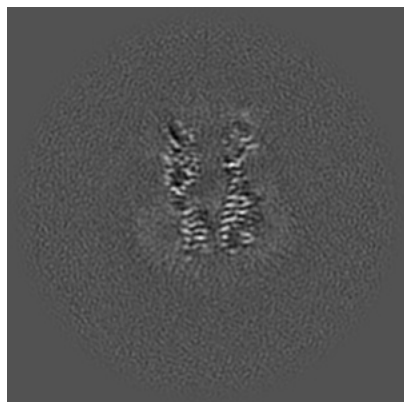


Z

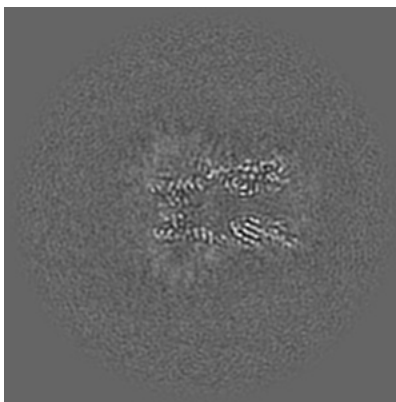
The images above show the map projected in three orthogonal directions.

6.2 Central slices [i](#)

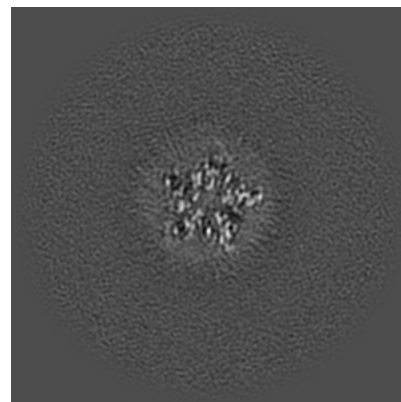
6.2.1 Primary map



X Index: 150

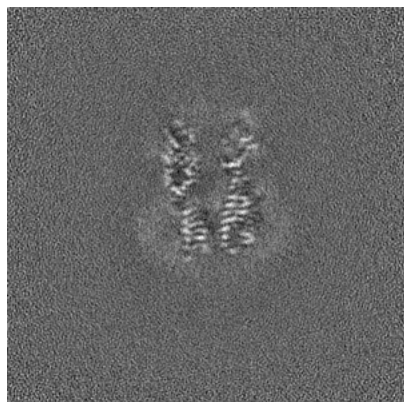


Y Index: 150

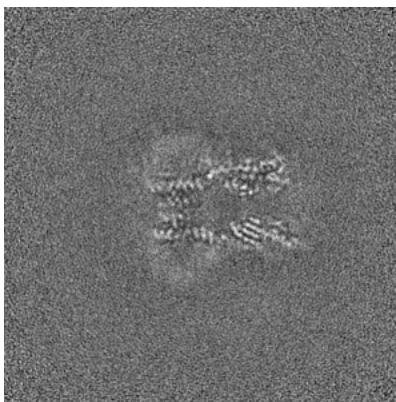


Z Index: 150

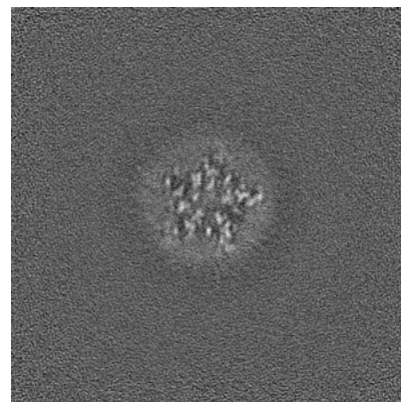
6.2.2 Raw map



X Index: 150



Y Index: 150

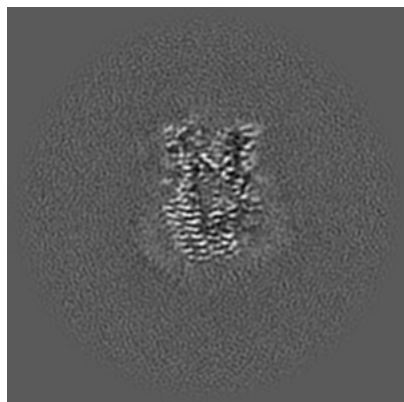


Z Index: 150

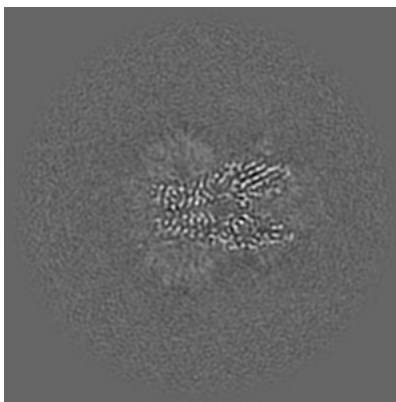
The images above show central slices of the map in three orthogonal directions.

6.3 Largest variance slices [i](#)

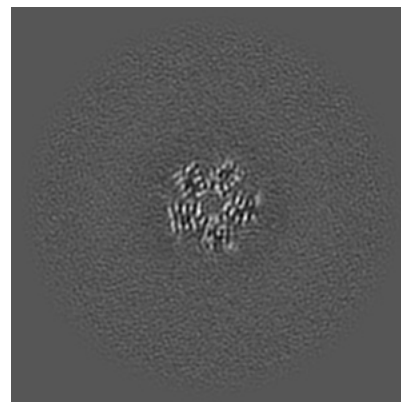
6.3.1 Primary map



X Index: 161

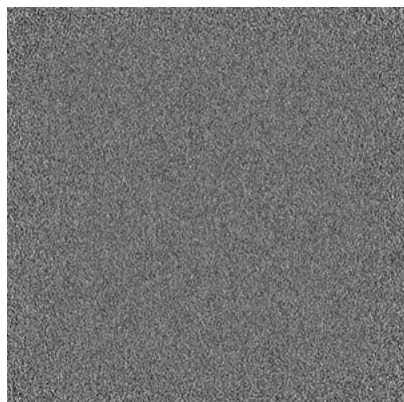


Y Index: 143

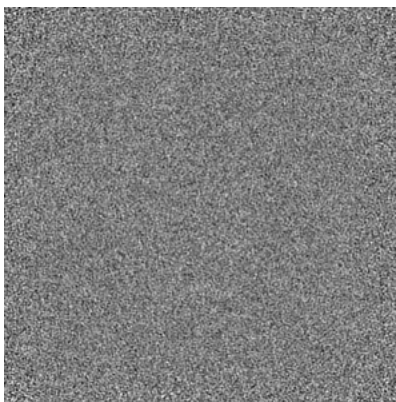


Z Index: 185

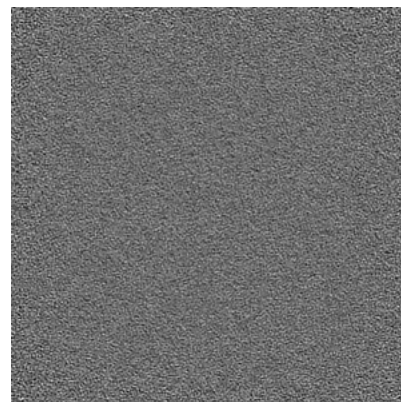
6.3.2 Raw map



X Index: 0



Y Index: 0

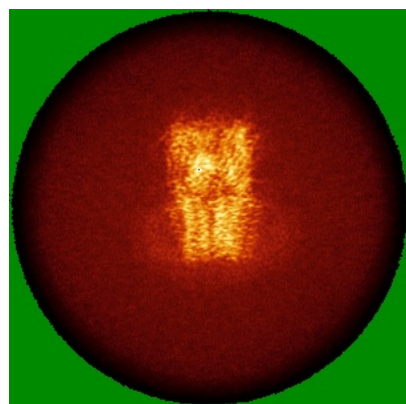


Z Index: 0

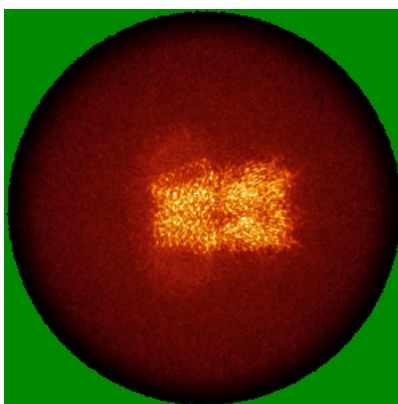
The images above show the largest variance slices of the map in three orthogonal directions.

6.4 Orthogonal standard-deviation projections (False-color) [i](#)

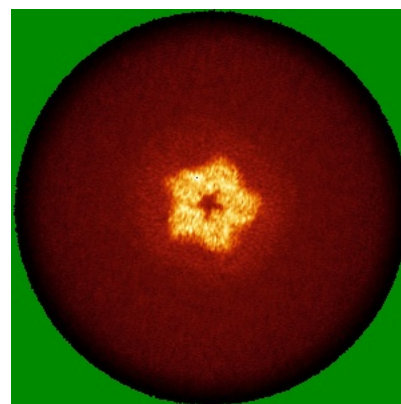
6.4.1 Primary map



X

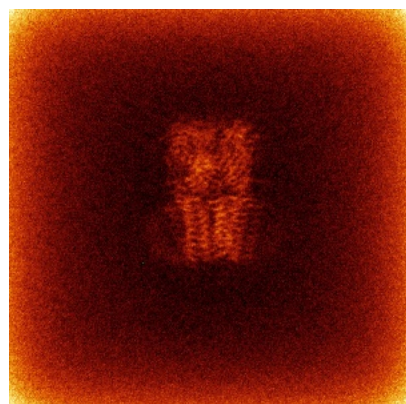


Y

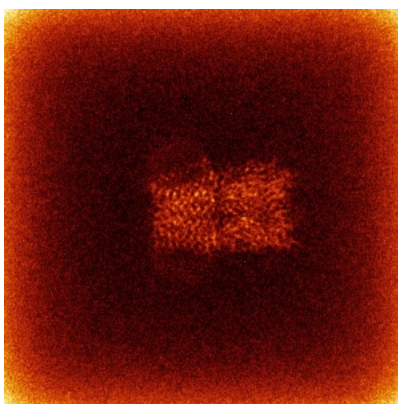


Z

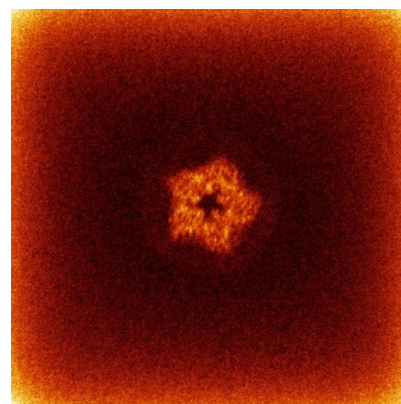
6.4.2 Raw map



X



Y

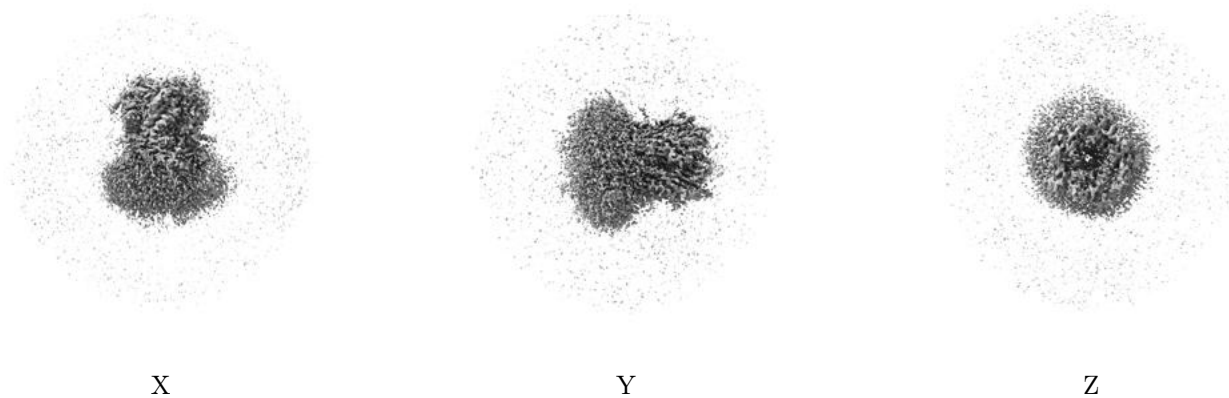


Z

The images above show the map standard deviation projections with false color in three orthogonal directions. Minimum values are shown in green, max in blue, and dark to light orange shades represent small to large values respectively.

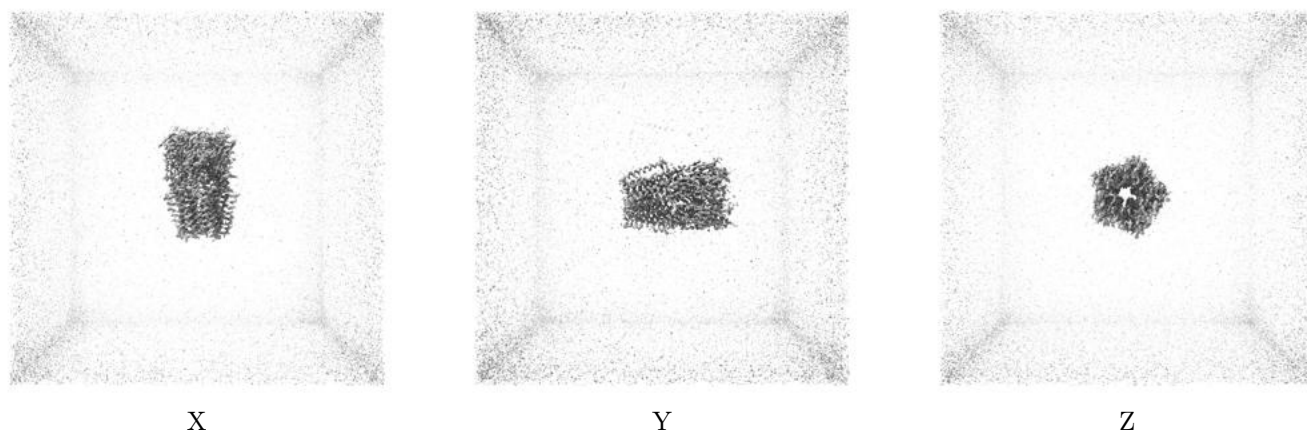
6.5 Orthogonal surface views [i](#)

6.5.1 Primary map



The images above show the 3D surface view of the map at the recommended contour level 0.3. These images, in conjunction with the slice images, may facilitate assessment of whether an appropriate contour level has been provided.

6.5.2 Raw map



These images show the 3D surface of the raw map. The raw map's contour level was selected so that its surface encloses the same volume as the primary map does at its recommended contour level.

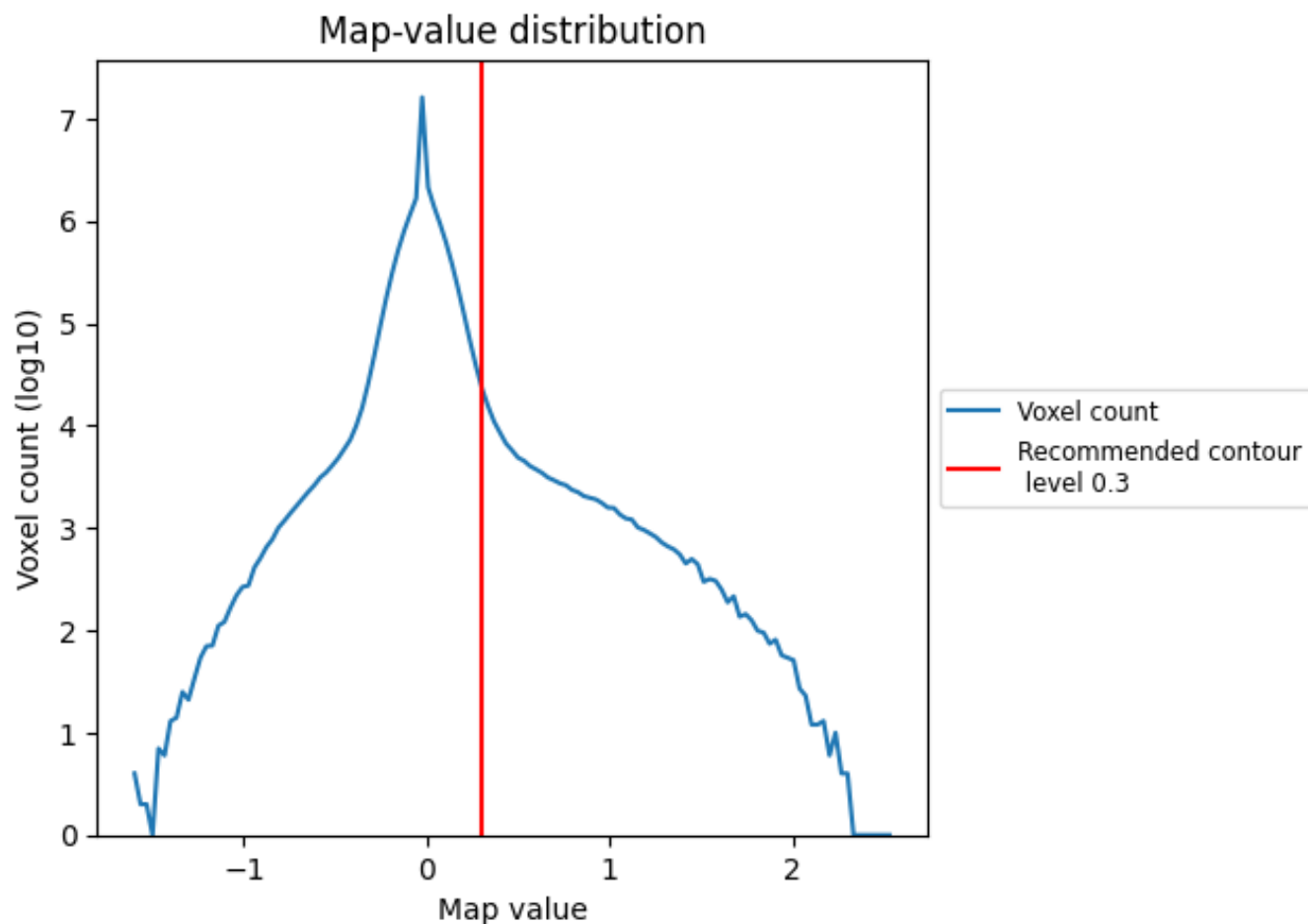
6.6 Mask visualisation [i](#)

This section was not generated. No masks/segmentation were deposited.

7 Map analysis [i](#)

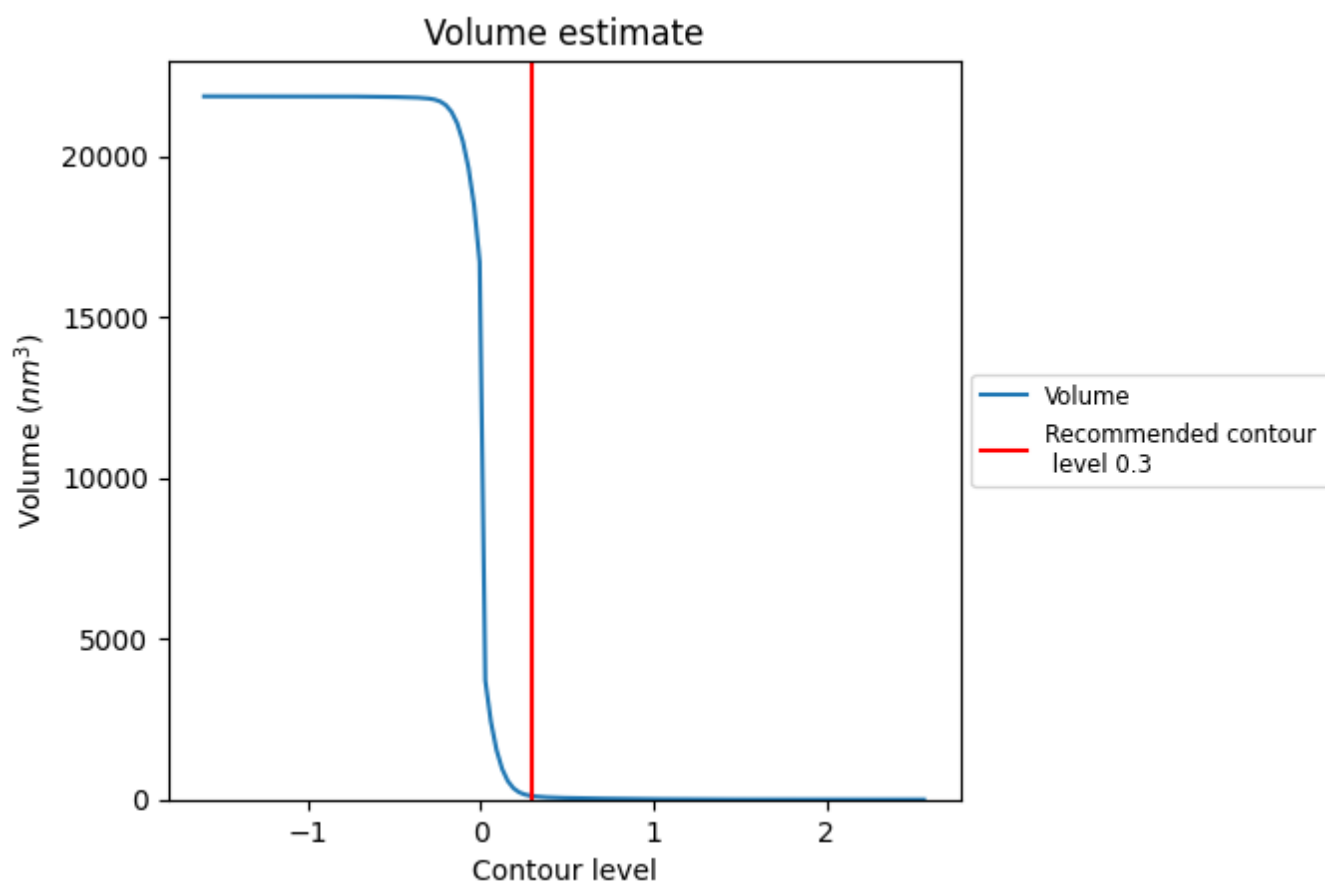
This section contains the results of statistical analysis of the map.

7.1 Map-value distribution [i](#)



The map-value distribution is plotted in 128 intervals along the x-axis. The y-axis is logarithmic. A spike in this graph at zero usually indicates that the volume has been masked.

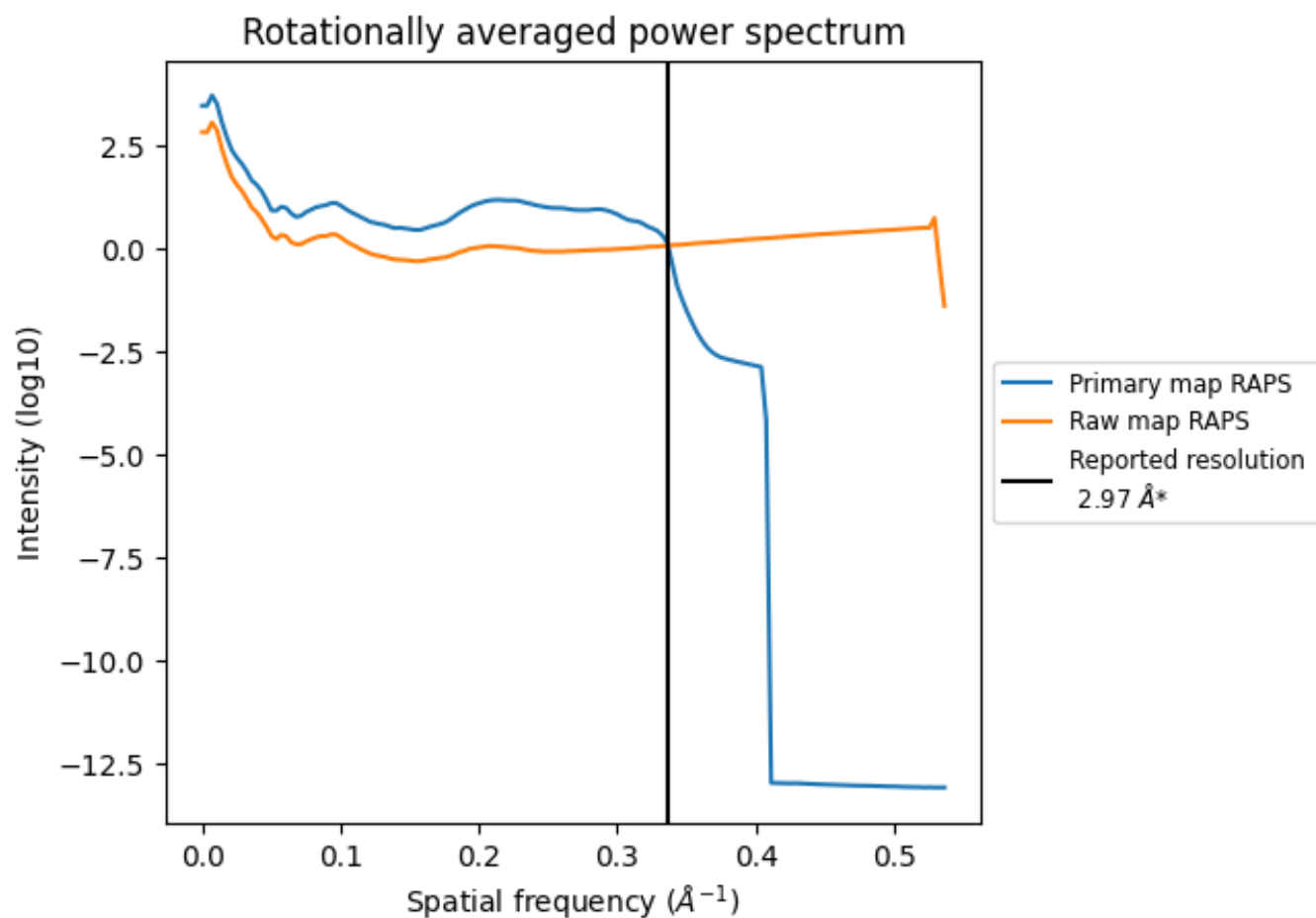
7.2 Volume estimate [i](#)



The volume at the recommended contour level is 109 nm³; this corresponds to an approximate mass of 99 kDa.

The volume estimate graph shows how the enclosed volume varies with the contour level. The recommended contour level is shown as a vertical line and the intersection between the line and the curve gives the volume of the enclosed surface at the given level.

7.3 Rotationally averaged power spectrum ⓘ

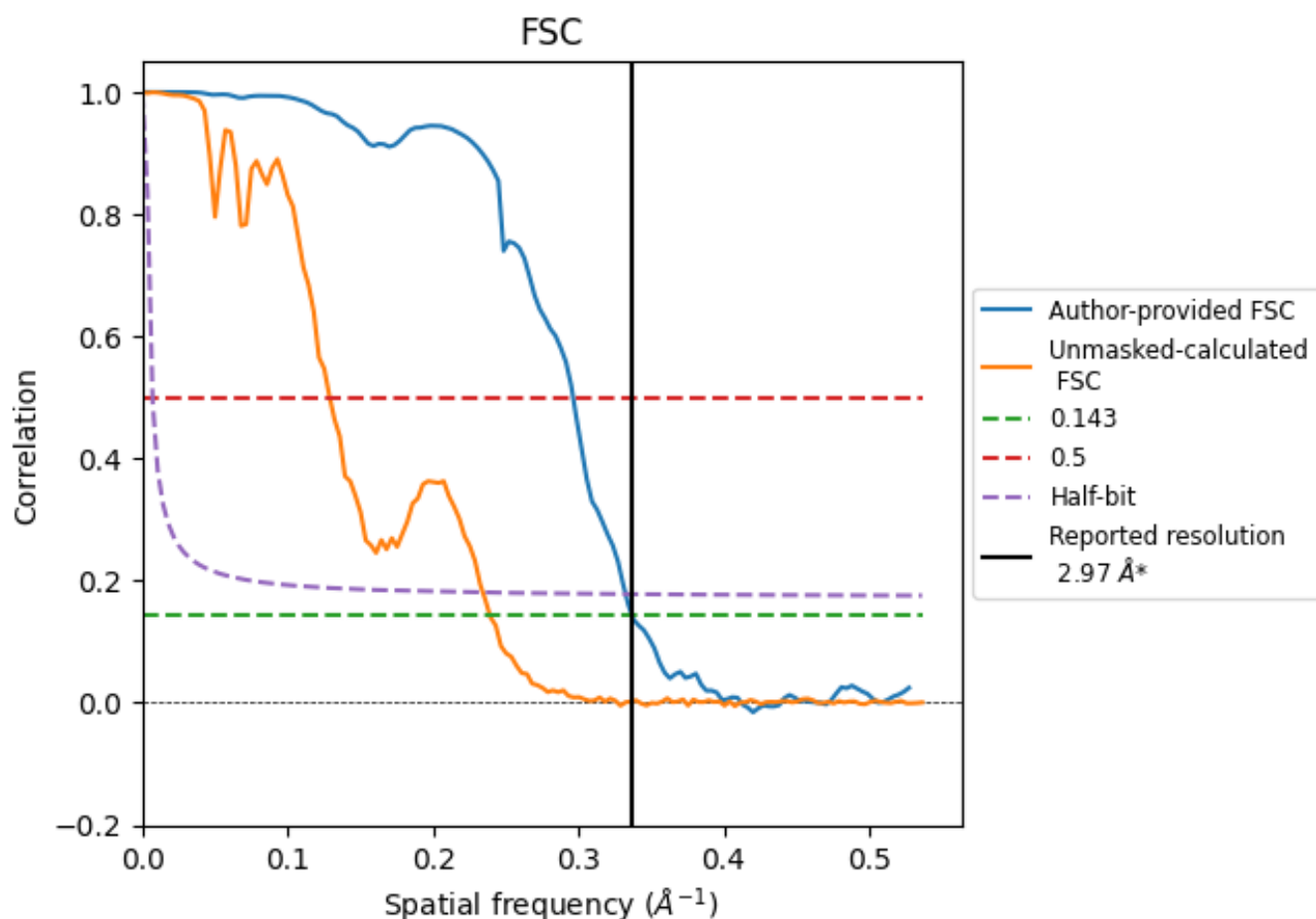


*Reported resolution corresponds to spatial frequency of 0.337 \AA^{-1}

8 Fourier-Shell correlation [i](#)

Fourier-Shell Correlation (FSC) is the most commonly used method to estimate the resolution of single-particle and subtomogram-averaged maps. The shape of the curve depends on the imposed symmetry, mask and whether or not the two 3D reconstructions used were processed from a common reference. The reported resolution is shown as a black line. A curve is displayed for the half-bit criterion in addition to lines showing the 0.143 gold standard cut-off and 0.5 cut-off.

8.1 FSC [i](#)



*Reported resolution corresponds to spatial frequency of 0.337 \AA^{-1}

8.2 Resolution estimates [i](#)

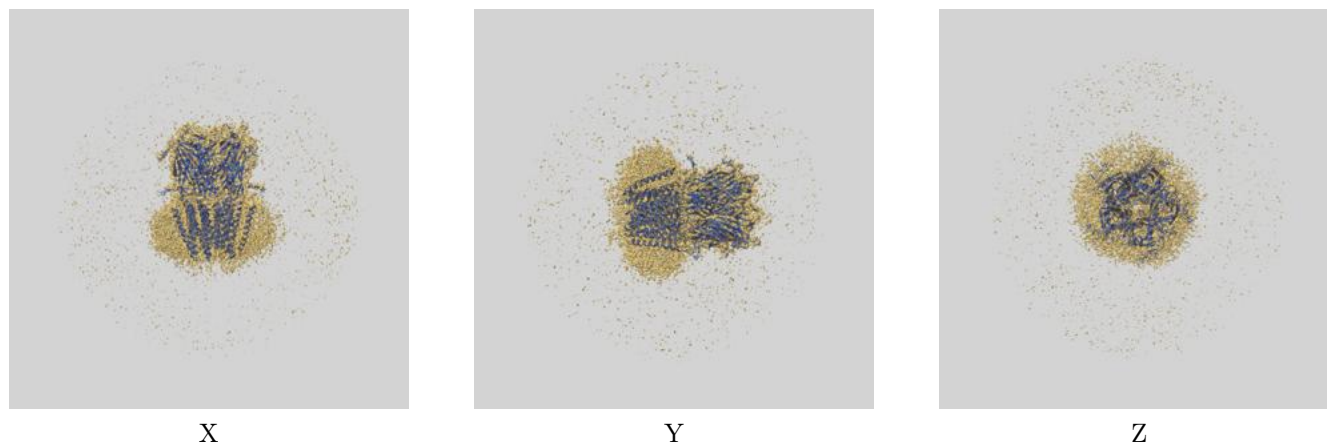
Resolution estimate (Å)	Estimation criterion (FSC cut-off)		
	0.143	0.5	Half-bit
Reported by author	2.97	-	-
Author-provided FSC curve	2.97	3.37	3.01
Unmasked-calculated*	4.18	7.76	4.27

*Resolution estimate based on FSC curve calculated by comparison of deposited half-maps. The value from deposited half-maps intersecting FSC 0.143 CUT-OFF 4.18 differs from the reported value 2.97 by more than 10 %

9 Map-model fit [i](#)

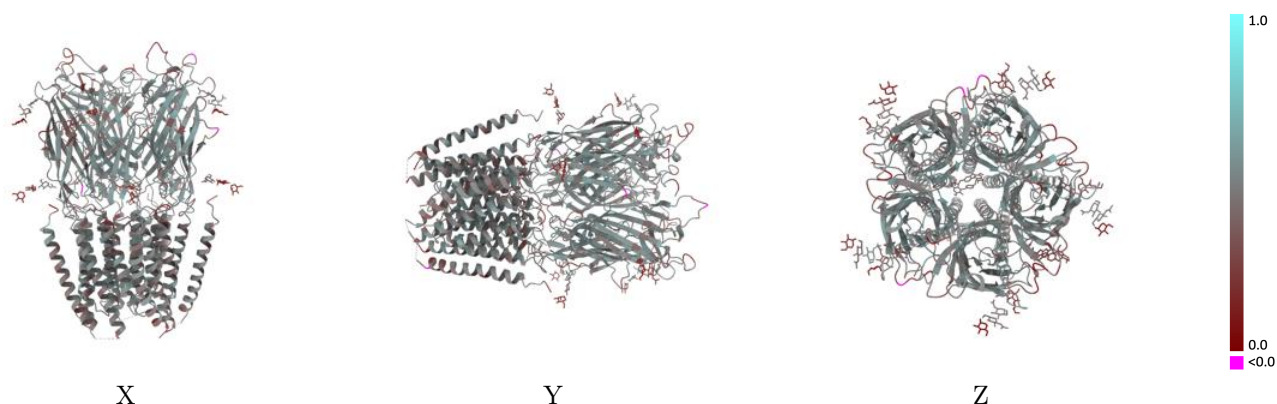
This section contains information regarding the fit between EMDB map EMD-63037 and PDB model 9LEY. Per-residue inclusion information can be found in section 3 on page 13.

9.1 Map-model overlay [i](#)



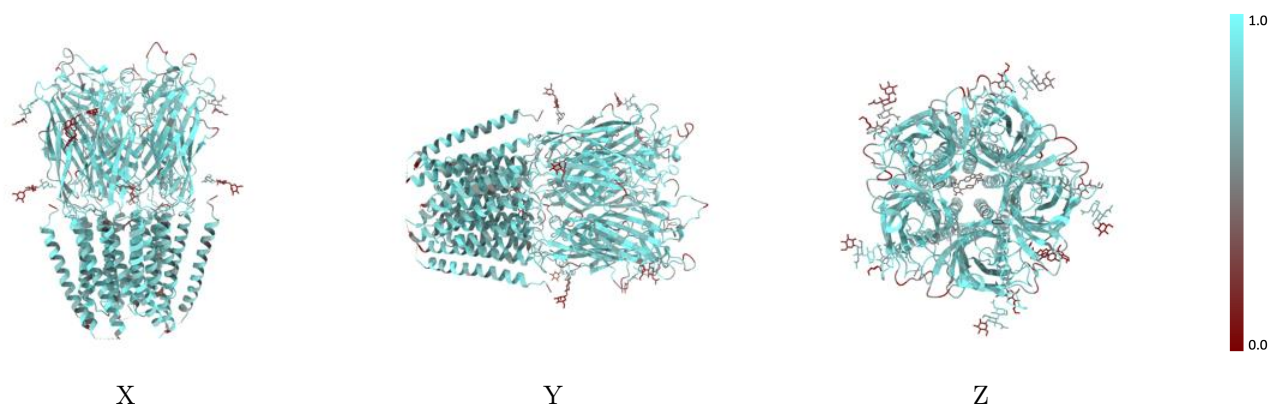
The images above show the 3D surface view of the map at the recommended contour level 0.3 at 50% transparency in yellow overlaid with a ribbon representation of the model coloured in blue. These images allow for the visual assessment of the quality of fit between the atomic model and the map.

9.2 Q-score mapped to coordinate model [i](#)



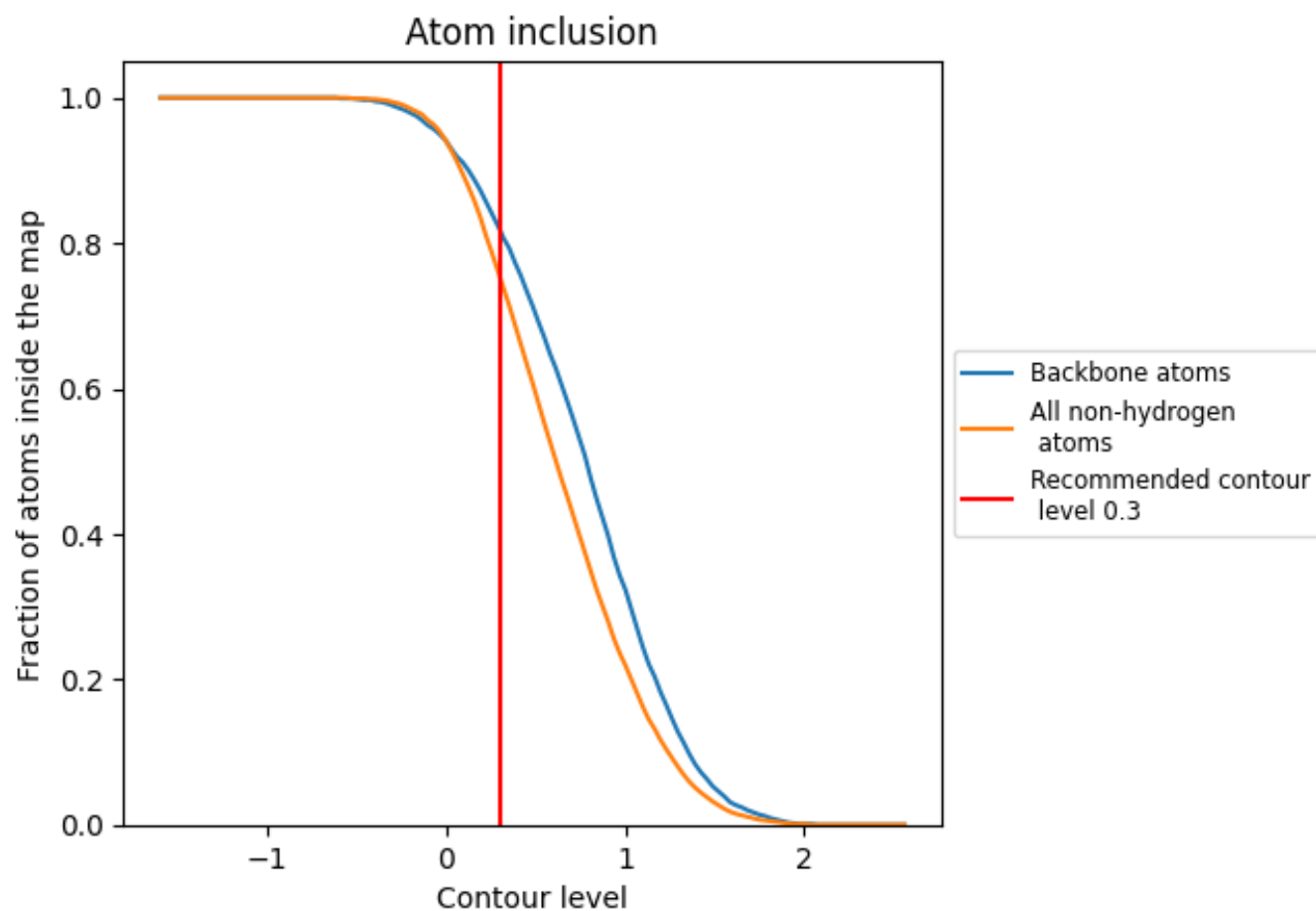
The images above show the model with each residue coloured according to its Q-score. This shows their resolvability in the map with higher Q-score values reflecting better resolvability. Please note: Q-score is calculating the resolvability of atoms, and thus high values are only expected at resolutions at which atoms can be resolved. Low Q-score values may therefore be expected for many entries.

9.3 Atom inclusion mapped to coordinate model [i](#)



The images above show the model with each residue coloured according to its atom inclusion. This shows to what extent they are inside the map at the recommended contour level (0.3).

9.4 Atom inclusion [i](#)



At the recommended contour level, 82% of all backbone atoms, 75% of all non-hydrogen atoms, are inside the map.

9.5 Map-model fit summary ⓘ

The table lists the average atom inclusion at the recommended contour level (0.3) and Q-score for the entire model and for each chain.

Chain	Atom inclusion	Q-score
All	<div></div> 0.7530	<div></div> 0.4670
A	<div></div> 0.7700	<div></div> 0.4770
B	<div></div> 0.7600	<div></div> 0.4670
C	<div></div> 0.7640	<div></div> 0.4760
D	<div></div> 0.7620	<div></div> 0.4710
E	<div></div> 0.7630	<div></div> 0.4700
F	<div></div> 0.3080	<div></div> 0.2570
G	<div></div> 0.3330	<div></div> 0.3720
H	<div></div> 0.4620	<div></div> 0.3810
I	<div></div> 0.3330	<div></div> 0.2690
J	<div></div> 0.5130	<div></div> 0.3490
K	<div></div> 0.3080	<div></div> 0.2310
L	<div></div> 0.5380	<div></div> 0.3100
M	<div></div> 0.2820	<div></div> 0.2680
N	<div></div> 0.5640	<div></div> 0.3700
O	<div></div> 0.4620	<div></div> 0.2530

1.0

0.0

<0.0