



# Full wwPDB X-ray Structure Validation Report ⓘ

Oct 31, 2023 – 01:43 PM EDT

PDB ID : 3LE7  
Title : Crystal structure of PD-L1 from *P. dioica* in complex with adenine  
Authors : Ruggiero, A.; Berisio, R.  
Deposited on : 2010-01-14  
Resolution : 1.65 Å(reported)

This is a Full wwPDB X-ray Structure Validation Report for a publicly released PDB entry.

We welcome your comments at [validation@mail.wwpdb.org](mailto:validation@mail.wwpdb.org)

A user guide is available at

<https://www.wwpdb.org/validation/2017/XrayValidationReportHelp>

with specific help available everywhere you see the ⓘ symbol.

The types of validation reports are described at

<http://www.wwpdb.org/validation/2017/FAQs#types>.

---

The following versions of software and data (see [references ⓘ](#)) were used in the production of this report:

MolProbity : 4.02b-467  
Mogul : 1.8.5 (274361), CSD as541be (2020)  
Xtriage (Phenix) : 1.13  
EDS : 2.36  
Percentile statistics : 20191225.v01 (using entries in the PDB archive December 25th 2019)  
Refmac : 5.8.0158  
CCP4 : 7.0.044 (Gargrove)  
Ideal geometry (proteins) : Engh & Huber (2001)  
Ideal geometry (DNA, RNA) : Parkinson et al. (1996)  
Validation Pipeline (wwPDB-VP) : 2.36

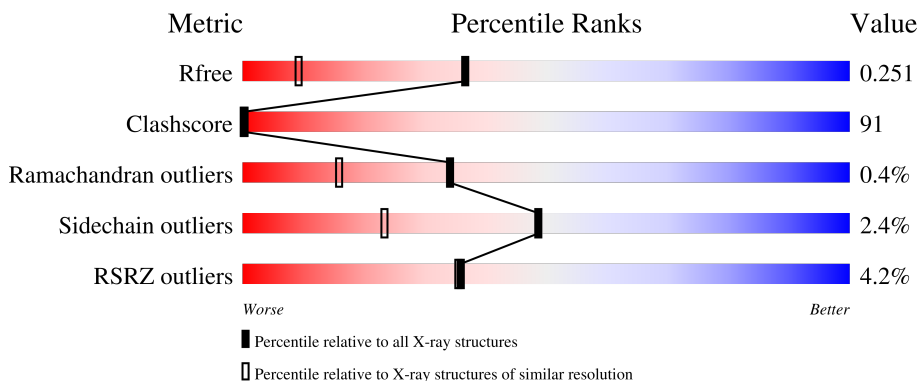
# 1 Overall quality at a glance

The following experimental techniques were used to determine the structure:

*X-RAY DIFFRACTION*

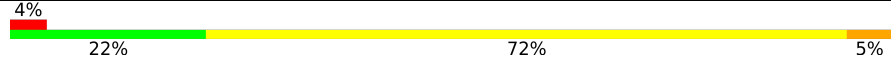
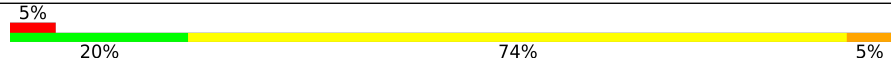
The reported resolution of this entry is 1.65 Å.

Percentile scores (ranging between 0-100) for global validation metrics of the entry are shown in the following graphic. The table shows the number of entries on which the scores are based.



Metric	Whole archive (#Entries)	Similar resolution (#Entries, resolution range(Å))
$R_{free}$	130704	1827 (1.66-1.66)
Clashscore	141614	1931 (1.66-1.66)
Ramachandran outliers	138981	1891 (1.66-1.66)
Sidechain outliers	138945	1891 (1.66-1.66)
RSRZ outliers	127900	1791 (1.66-1.66)

The table below summarises the geometric issues observed across the polymeric chains and their fit to the electron density. The red, orange, yellow and green segments of the lower bar indicate the fraction of residues that contain outliers for  $\geq 3$ , 2, 1 and 0 types of geometric quality criteria respectively. A grey segment represents the fraction of residues that are not modelled. The numeric value for each fraction is indicated below the corresponding segment, with a dot representing fractions  $\leq 5\%$ . The upper red bar (where present) indicates the fraction of residues that have poor fit to the electron density. The numeric value is given above the bar.

Mol	Chain	Length	Quality of chain
1	A	261	
1	B	261	

The following table lists non-polymeric compounds, carbohydrate monomers and non-standard residues in protein, DNA, RNA chains that are outliers for geometric or electron-density-fit criteria:

Mol	Type	Chain	Res	Chirality	Geometry	Clashes	Electron density
2	NAG	A	265	-	-	X	-
3	ADE	A	501	-	-	X	-
3	ADE	B	601	-	-	X	-

## 2 Entry composition [i](#)

There are 4 unique types of molecules in this entry. The entry contains 4873 atoms, of which 0 are hydrogens and 0 are deuteriums.

In the tables below, the ZeroOcc column contains the number of atoms modelled with zero occupancy, the AltConf column contains the number of residues with at least one atom in alternate conformation and the Trace column contains the number of residues modelled with at most 2 atoms.

- Molecule 1 is a protein called Ribosome-inactivating protein PD-L1/PD-L2.

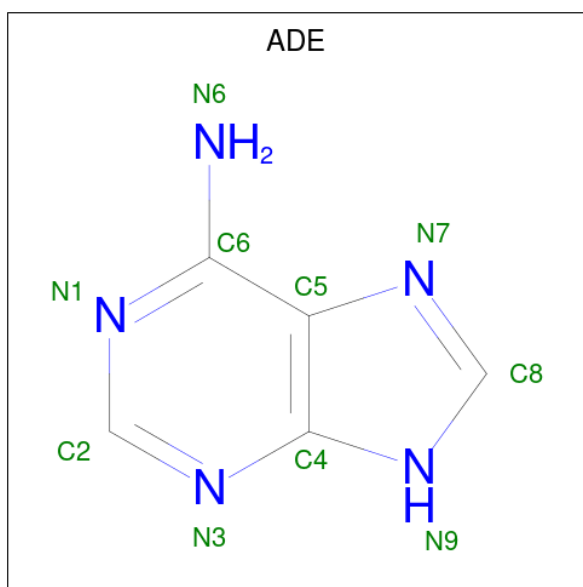
Mol	Chain	Residues	Atoms					ZeroOcc	AltConf	Trace
			Total	C	N	O	S			
1	A	261	Total 2072	C 1300	N 353	O 409	S 10	0	5	0
1	B	261	Total 2080	C 1301	N 357	O 412	S 10	0	5	0

- Molecule 2 is 2-acetamido-2-deoxy-beta-D-glucopyranose (three-letter code: NAG) (formula:  $C_8H_{15}NO_6$ ).



Mol	Chain	Residues	Atoms				ZeroOcc	AltConf
			Total	C	N	O		
2	A	1	Total 14	C 8	N 1	O 5	0	0
2	A	1	Total 14	C 8	N 1	O 5	0	0
2	B	1	Total 14	C 8	N 1	O 5	0	0

- Molecule 3 is ADENINE (three-letter code: ADE) (formula:  $C_5H_5N_5$ ).



Mol	Chain	Residues	Atoms	ZeroOcc	AltConf
3	A	1	Total C N 10 5 5	0	0
3	B	1	Total C N 10 5 5	0	0

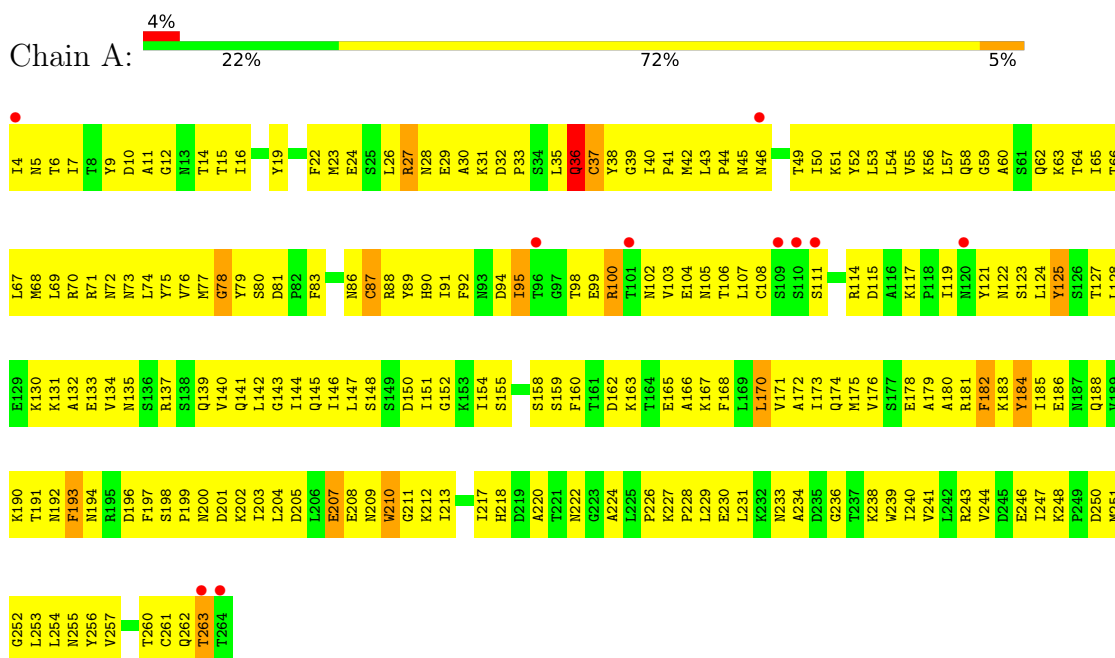
- Molecule 4 is water.

Mol	Chain	Residues	Atoms	ZeroOcc	AltConf
4	A	318	Total O 318 318	0	0
4	B	341	Total O 341 341	0	0

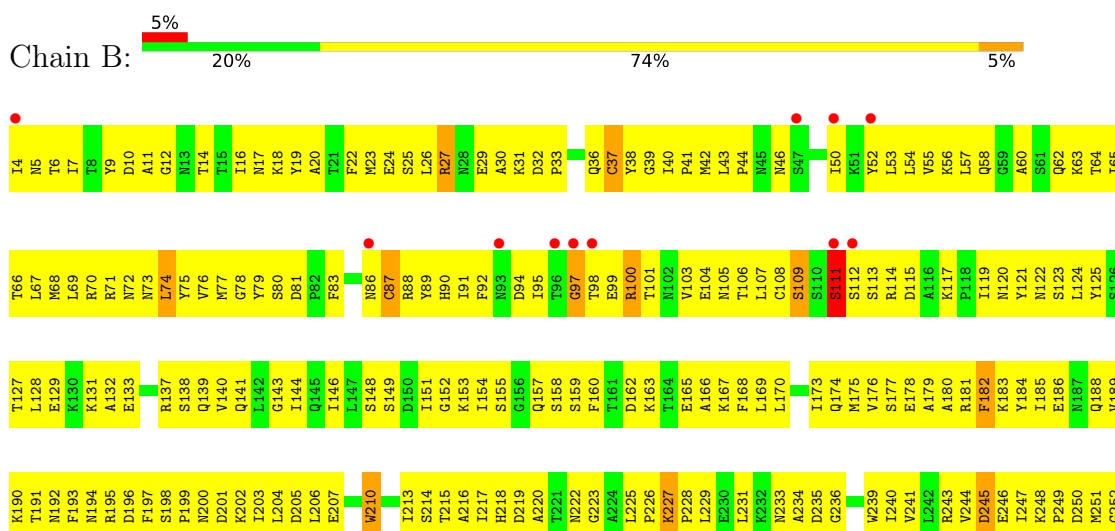
### 3 Residue-property plots

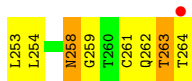
These plots are drawn for all protein, RNA, DNA and oligosaccharide chains in the entry. The first graphic for a chain summarises the proportions of the various outlier classes displayed in the second graphic. The second graphic shows the sequence view annotated by issues in geometry and electron density. Residues are color-coded according to the number of geometric quality criteria for which they contain at least one outlier: green = 0, yellow = 1, orange = 2 and red = 3 or more. A red dot above a residue indicates a poor fit to the electron density ( $RSRZ > 2$ ). Stretches of 2 or more consecutive residues without any outlier are shown as a green connector. Residues present in the sample, but not in the model, are shown in grey.

- Molecule 1: Ribosome-inactivating protein PD-L1/PD-L2



- Molecule 1: Ribosome-inactivating protein PD-L1/PD-L2





## 4 Data and refinement statistics

Property	Value	Source
Space group	C 1 2 1	Depositor
Cell constants a, b, c, $\alpha$ , $\beta$ , $\gamma$	149.32Å 32.16Å 112.30Å 90.00° 128.29° 90.00°	Depositor
Resolution (Å)	9.97 – 1.65 9.97 – 1.65	Depositor EDS
% Data completeness (in resolution range)	84.9 (9.97-1.65) 84.9 (9.97-1.65)	Depositor EDS
$R_{merge}$	0.09	Depositor
$R_{sym}$	(Not available)	Depositor
$\langle I/\sigma(I) \rangle$ <sup>1</sup>	2.59 (at 1.65Å)	Xtrriage
Refinement program	REFMAC 5.2.0005	Depositor
R, $R_{free}$	0.213 , 0.249 0.227 , 0.251	Depositor DCC
$R_{free}$ test set	2167 reflections (5.00%)	wwPDB-VP
Wilson B-factor (Å <sup>2</sup> )	10.6	Xtrriage
Anisotropy	0.064	Xtrriage
Bulk solvent $k_{sol}$ (e/Å <sup>3</sup> ), $B_{sol}$ (Å <sup>2</sup> )	0.43 , 21.5	EDS
L-test for twinning <sup>2</sup>	$\langle  L  \rangle = 0.47$ , $\langle L^2 \rangle = 0.31$	Xtrriage
Estimated twinning fraction	No twinning to report.	Xtrriage
$F_o, F_c$ correlation	0.91	EDS
Total number of atoms	4873	wwPDB-VP
Average B, all atoms (Å <sup>2</sup> )	16.0	wwPDB-VP

Xtrriage's analysis on translational NCS is as follows: *The largest off-origin peak in the Patterson function is 8.93% of the height of the origin peak. No significant pseudotranslation is detected.*

<sup>1</sup>Intensities estimated from amplitudes.

<sup>2</sup>Theoretical values of  $\langle |L| \rangle$ ,  $\langle L^2 \rangle$  for acentric reflections are 0.5, 0.333 respectively for untwinned datasets, and 0.375, 0.2 for perfectly twinned datasets.



## 5 Model quality [i](#)

### 5.1 Standard geometry [i](#)

Bond lengths and bond angles in the following residue types are not validated in this section: ADE, NAG

The Z score for a bond length (or angle) is the number of standard deviations the observed value is removed from the expected value. A bond length (or angle) with  $|Z| > 5$  is considered an outlier worth inspection. RMSZ is the root-mean-square of all Z scores of the bond lengths (or angles).

Mol	Chain	Bond lengths		Bond angles	
		RMSZ	# Z  >5	RMSZ	# Z  >5
1	A	1.75	10/2125 (0.5%)	1.27	7/2875 (0.2%)
1	B	1.73	4/2129 (0.2%)	1.25	3/2879 (0.1%)
All	All	1.74	14/4254 (0.3%)	1.26	10/5754 (0.2%)

Chiral center outliers are detected by calculating the chiral volume of a chiral center and verifying if the center is modelled as a planar moiety or with the opposite hand. A planarity outlier is detected by checking planarity of atoms in a peptide group, atoms in a mainchain group or atoms of a sidechain that are expected to be planar.

Mol	Chain	#Chirality outliers	#Planarity outliers
1	A	0	1

All (14) bond length outliers are listed below:

Mol	Chain	Res	Type	Atoms	Z	Observed(Å)	Ideal(Å)
1	A	210	TRP	CB-CG	-7.29	1.37	1.50
1	A	184	TYR	CD1-CE1	-7.18	1.28	1.39
1	A	87	CYS	CB-SG	-6.86	1.70	1.82
1	A	207	GLU	CG-CD	-6.09	1.42	1.51
1	A	37	CYS	CB-SG	-6.08	1.72	1.82
1	B	182	PHE	CB-CG	-5.96	1.41	1.51
1	A	182	PHE	CB-CG	-5.74	1.41	1.51
1	B	87	CYS	CB-SG	-5.64	1.72	1.81
1	B	210	TRP	CB-CG	-5.61	1.40	1.50
1	A	125	TYR	CD2-CE2	-5.33	1.31	1.39
1	A	27	ARG	CG-CD	-5.29	1.38	1.51
1	A	193	PHE	CB-CG	-5.28	1.42	1.51
1	A	207	GLU	CB-CG	-5.26	1.42	1.52
1	B	37	CYS	CB-SG	-5.11	1.73	1.81

All (10) bond angle outliers are listed below:

Mol	Chain	Res	Type	Atoms	Z	Observed(°)	Ideal(°)
1	B	27	ARG	NE-CZ-NH2	-9.30	115.65	120.30
1	A	27	ARG	NE-CZ-NH2	-7.79	116.41	120.30
1	A	26	LEU	CB-CG-CD2	-5.36	101.88	111.00
1	B	204	LEU	CB-CG-CD2	-5.36	101.89	111.00
1	B	100	ARG	NE-CZ-NH1	-5.34	117.63	120.30
1	A	78	GLY	N-CA-C	-5.23	100.02	113.10
1	A	100	ARG	NE-CZ-NH1	-5.20	117.70	120.30
1	A	36[A]	GLN	N-CA-CB	-5.20	101.25	110.60
1	A	36[B]	GLN	N-CA-CB	-5.20	101.25	110.60
1	A	170	LEU	CB-CG-CD1	-5.03	102.45	111.00

There are no chirality outliers.

All (1) planarity outliers are listed below:

Mol	Chain	Res	Type	Group
1	A	95	ILE	Peptide

## 5.2 Too-close contacts

In the following table, the Non-H and H(model) columns list the number of non-hydrogen atoms and hydrogen atoms in the chain respectively. The H(added) column lists the number of hydrogen atoms added and optimized by MolProbity. The Clashes column lists the number of clashes within the asymmetric unit, whereas Symm-Clashes lists symmetry-related clashes.

Mol	Chain	Non-H	H(model)	H(added)	Clashes	Symm-Clashes
1	A	2072	0	2068	391	2
1	B	2080	0	2068	373	2
2	A	28	0	26	21	0
2	B	14	0	13	0	0
3	A	10	0	4	7	0
3	B	10	0	4	8	0
4	A	318	0	0	44	1
4	B	341	0	0	60	2
All	All	4873	0	4183	764	5

The all-atom clashscore is defined as the number of clashes found per 1000 atoms (including hydrogen atoms). The all-atom clashscore for this structure is 91.

All (764) close contacts within the same asymmetric unit are listed below, sorted by their clash magnitude.

Atom-1	Atom-2	Interatomic distance (Å)	Clash overlap (Å)
1:A:7:ILE:CD1	1:A:53[B]:LEU:HD21	1.49	1.41
1:B:7:ILE:CD1	1:B:29[B]:GLU:HG3	1.71	1.19
1:B:68:MET:HB3	4:B:625:HOH:O	1.47	1.13
1:B:86:ASN:HB3	4:B:635:HOH:O	1.50	1.09
1:B:7:ILE:HD11	1:B:29[B]:GLU:CG	1.81	1.09
1:B:114:ARG:HB3	4:B:528:HOH:O	1.53	1.07
1:A:7:ILE:HD12	1:A:53[B]:LEU:HD21	1.10	1.06
1:B:81:ASP:OD1	1:B:90:HIS:HE1	1.39	1.06
1:A:4:ILE:HD13	1:A:106:THR:CG2	1.88	1.03
1:A:194:ASN:ND2	1:B:194:ASN:HD21	1.57	1.03
1:A:123:SER:HB2	3:A:501:ADE:H62	1.19	1.00
1:A:194:ASN:HD22	1:B:194:ASN:ND2	1.60	1.00
1:A:128:LEU:HD11	4:A:590:HOH:O	1.62	1.00
1:B:121:TYR:CE1	4:B:644:HOH:O	2.13	0.99
1:B:123:SER:HB2	4:B:568:HOH:O	1.62	0.99
1:B:123:SER:HB2	3:B:601:ADE:H62	1.27	0.98
1:A:154:ILE:HD12	1:A:168:PHE:CD2	1.97	0.98
1:B:92:PHE:HE1	4:B:644:HOH:O	1.47	0.97
1:A:154:ILE:HD12	1:A:168:PHE:CG	2.02	0.95
1:A:23:MET:HG3	1:A:186:GLU:HG3	1.49	0.94
1:A:7:ILE:CD1	1:A:53[B]:LEU:CD2	2.45	0.93
1:B:81:ASP:OD1	1:B:90:HIS:CE1	2.22	0.93
1:B:95:ILE:HG23	1:B:99:GLU:HG2	1.49	0.93
1:A:7:ILE:HD11	1:A:53[B]:LEU:HD21	1.48	0.92
1:B:258:ASN:HD22	1:B:259:GLY:H	1.11	0.91
1:B:83:PHE:CE1	1:B:158:SER:HA	2.06	0.90
1:B:243[B]:ARG:NH2	1:B:245[B]:ASP:OD1	2.04	0.90
1:A:7:ILE:HD12	1:A:53[B]:LEU:CD2	2.01	0.89
1:A:211:GLY:H	2:A:265:NAG:C6	1.86	0.87
1:A:43:LEU:HD21	1:A:253:LEU:HD13	1.58	0.86
1:B:263:THR:HG23	4:B:506:HOH:O	1.76	0.85
1:B:7:ILE:HD11	1:B:29[B]:GLU:HG3	0.88	0.85
1:B:243[B]:ARG:HB3	1:B:245[B]:ASP:OD2	1.76	0.85
1:A:4:ILE:CD1	1:A:106:THR:HG21	2.06	0.85
1:A:100:ARG:HA	1:A:103[B]:VAL:HG12	1.59	0.84
1:B:4:ILE:HD12	1:B:106:THR:CG2	2.06	0.84
1:B:109:SER:C	1:B:111:SER:H	1.82	0.83
1:B:53:LEU:HG	4:B:645:HOH:O	1.76	0.83
1:A:107:LEU:HD11	4:A:546:HOH:O	1.79	0.82
1:B:121:TYR:HB3	1:B:131:LYS:HE3	1.60	0.82
1:A:211:GLY:H	2:A:265:NAG:H61	1.43	0.81
1:A:241:VAL:HG13	1:A:246:GLU:HB2	1.62	0.81

*Continued on next page...*

*Continued from previous page...*

Atom-1	Atom-2	Interatomic distance (Å)	Clash overlap (Å)
1:B:258:ASN:HD22	1:B:259:GLY:N	1.78	0.81
1:A:74:LEU:HD21	1:A:180:ALA:HB3	1.62	0.80
1:A:4:ILE:CD1	1:A:106:THR:CG2	2.58	0.80
1:A:154:ILE:HD11	1:A:168:PHE:HB3	1.62	0.80
1:A:154:ILE:HD11	1:A:165:GLU:HA	1.65	0.79
1:A:83:PHE:CE1	1:A:158:SER:HA	2.17	0.79
1:B:90:HIS:HA	1:B:117:LYS:O	1.83	0.79
1:B:83:PHE:CZ	1:B:158:SER:HA	2.18	0.78
1:B:52:TYR:CG	1:B:68:MET:HE3	2.19	0.78
1:B:70:ARG:HH11	1:B:73:ASN:HD21	1.30	0.78
1:A:29[B]:GLU:HG2	4:A:297:HOH:O	1.83	0.78
1:A:83:PHE:CZ	1:A:158:SER:HA	2.19	0.77
1:B:263:THR:CG2	4:B:506:HOH:O	2.31	0.77
1:B:87:CYS:HB2	4:B:479:HOH:O	1.84	0.76
1:A:213:ILE:HG12	1:A:229:LEU:HD21	1.66	0.76
1:B:4:ILE:HD13	1:B:54:LEU:HG	1.68	0.76
1:B:90:HIS:HD2	4:B:354:HOH:O	1.69	0.76
1:A:144:ILE:HG13	1:A:193:PHE:CZ	2.19	0.76
1:B:101:THR:HG22	1:B:105:ASN:HD21	1.51	0.76
1:B:95:ILE:O	1:B:100:ARG:HD3	1.85	0.75
1:A:32:ASP:HB3	1:A:35:LEU:HB2	1.66	0.75
1:B:75:TYR:HA	3:B:601:ADE:C2	2.22	0.75
1:A:123:SER:HB2	3:A:501:ADE:N6	2.00	0.75
1:B:97:GLY:O	1:B:100:ARG:HB2	1.87	0.75
1:B:128:LEU:HD21	4:B:644:HOH:O	1.87	0.75
1:A:154:ILE:CD1	1:A:168:PHE:CD2	2.70	0.75
1:A:255:ASN:ND2	2:A:265:NAG:C1	2.50	0.75
1:B:53:LEU:HD23	1:B:71:ARG:HG2	1.68	0.74
1:B:92:PHE:CE1	4:B:644:HOH:O	2.27	0.74
1:B:121:TYR:HE1	4:B:644:HOH:O	1.57	0.74
1:B:69:LEU:HD23	1:B:74:LEU:HD22	1.69	0.74
1:A:80:SER:HA	1:A:88:ARG:O	1.86	0.74
1:B:68:MET:HG2	1:B:77:MET:CE	2.18	0.73
1:A:16:ILE:HD11	1:B:16:ILE:HD13	1.71	0.73
1:B:70:ARG:NH1	1:B:73:ASN:HD21	1.85	0.73
1:A:132:ALA:HB1	1:A:167:LYS:HG3	1.71	0.72
1:B:30:ALA:CB	1:B:74:LEU:HD21	2.19	0.72
1:B:86:ASN:ND2	4:B:484:HOH:O	2.22	0.72
1:A:10:ASP:O	1:A:14:THR:HB	1.90	0.72
1:B:23:MET:HG3	1:B:186:GLU:HG3	1.70	0.72
1:B:52:TYR:CD1	1:B:77:MET:HE1	2.25	0.72

*Continued on next page...*

*Continued from previous page...*

Atom-1	Atom-2	Interatomic distance (Å)	Clash overlap (Å)
1:B:88:ARG:HD2	1:B:117:LYS:HB2	1.73	0.71
1:B:80:SER:HA	1:B:88:ARG:O	1.90	0.71
1:A:53[A]:LEU:CD1	1:A:69:LEU:HB2	2.21	0.71
1:A:14:THR:CG2	1:A:144:ILE:HG21	2.20	0.71
1:A:211:GLY:N	2:A:265:NAG:H61	2.05	0.71
1:B:43:LEU:HD21	1:B:253:LEU:HD13	1.72	0.71
1:B:128:LEU:HD11	4:B:568:HOH:O	1.90	0.71
1:B:20:ALA:HB2	1:B:190[A]:LYS:HE2	1.73	0.71
1:B:104:GLU:HG2	1:B:114:ARG:NH1	2.05	0.71
1:A:60:ALA:HB3	1:A:152:GLY:HA3	1.73	0.71
1:A:81:ASP:OD1	1:A:90:HIS:NE2	2.17	0.70
1:A:72:ASN:HD21	2:A:265:NAG:H81	1.56	0.70
1:B:131:LYS:O	1:B:163:LYS:HA	1.91	0.70
1:B:16:ILE:HG23	1:B:190[A]:LYS:HG2	1.71	0.70
1:A:74:LEU:HD21	1:A:180:ALA:CB	2.22	0.69
1:A:178:GLU:CD	1:A:207:GLU:HG2	2.13	0.69
1:B:186:GLU:OE2	1:B:190[A]:LYS:NZ	2.24	0.69
1:A:68:MET:SD	1:A:103[B]:VAL:HG23	2.32	0.69
1:B:69:LEU:HD13	4:B:656:HOH:O	1.91	0.69
1:B:30:ALA:HB2	1:B:74:LEU:HD21	1.73	0.69
1:B:231:LEU:HD12	1:B:241:VAL:HG21	1.75	0.69
1:B:123:SER:CB	3:B:601:ADE:H62	2.03	0.69
1:A:63:LYS:HD3	4:A:600:HOH:O	1.93	0.69
1:B:68:MET:SD	1:B:103:VAL:HA	2.33	0.69
1:A:211:GLY:N	2:A:265:NAG:C6	2.55	0.69
1:A:222:ASN:O	1:A:243:ARG:NH2	2.26	0.69
1:B:68:MET:SD	1:B:106:THR:HB	2.32	0.69
1:A:123:SER:CB	3:A:501:ADE:H62	2.00	0.68
1:B:38:TYR:CB	1:B:244:VAL:HG11	2.23	0.68
1:A:55:VAL:HB	1:A:67:LEU:HB2	1.76	0.68
1:A:51[A]:LYS:CG	4:A:380:HOH:O	2.41	0.68
1:B:203:ILE:O	1:B:207:GLU:HG3	1.94	0.68
1:A:74:LEU:CD2	1:A:180:ALA:HB3	2.23	0.68
1:B:74:LEU:CD1	1:B:180:ALA:HB3	2.23	0.68
1:A:53[A]:LEU:HD11	1:A:69:LEU:HB2	1.76	0.68
1:B:29[B]:GLU:HG2	4:B:438:HOH:O	1.92	0.68
1:B:222:ASN:H	1:B:262:GLN:NE2	1.92	0.68
1:A:108:CYS:HB3	1:A:114:ARG:HG2	1.76	0.67
1:B:173:ILE:CD1	4:B:568:HOH:O	2.42	0.67
1:A:201:ASP:OD1	4:A:640:HOH:O	2.11	0.67
1:A:69:LEU:HD23	1:A:74:LEU:HG	1.76	0.67

*Continued on next page...*

*Continued from previous page...*

Atom-1	Atom-2	Interatomic distance (Å)	Clash overlap (Å)
1:B:42:MET:HG2	1:B:43:LEU:O	1.94	0.67
1:A:62:GLN:NE2	4:A:285:HOH:O	2.18	0.67
1:A:100:ARG:CA	1:A:103[B]:VAL:HG12	2.25	0.67
1:A:144:ILE:HG13	1:A:193:PHE:CE1	2.30	0.67
1:B:16:ILE:HG23	1:B:190[B]:LYS:HD2	1.76	0.67
1:B:108:CYS:O	1:B:111:SER:CA	2.43	0.66
1:A:23:MET:HG3	1:A:186:GLU:CG	2.22	0.66
1:B:115:ASP:OD2	4:B:275:HOH:O	2.12	0.66
1:B:227:LYS:O	4:B:589:HOH:O	2.13	0.66
1:A:95:ILE:HG21	1:A:103[A]:VAL:HG21	1.78	0.65
1:B:24:GLU:OE2	4:B:649:HOH:O	2.13	0.65
1:B:90:HIS:CD2	1:B:117:LYS:HB3	2.31	0.65
1:A:83:PHE:HB3	1:A:88:ARG:HB2	1.76	0.65
1:B:65:ILE:HG13	1:B:155:SER:HB2	1.77	0.65
1:B:65:ILE:HD11	1:B:154:ILE:HB	1.78	0.65
1:B:241:VAL:HG11	1:B:247:ILE:HB	1.79	0.65
1:B:10:ASP:O	1:B:14:THR:HB	1.95	0.65
1:A:32:ASP:CG	1:A:35:LEU:HG	2.17	0.65
1:B:20:ALA:HB2	1:B:190[A]:LYS:CE	2.27	0.65
1:B:198:SER:HB3	4:B:391:HOH:O	1.95	0.65
1:A:37:CYS:HB2	1:A:254:LEU:CD1	2.26	0.65
1:A:16:ILE:HG12	1:A:193:PHE:HB2	1.79	0.65
1:B:83:PHE:HD2	1:B:86:ASN:HD21	1.42	0.65
1:A:123:SER:O	3:A:501:ADE:N7	2.30	0.65
1:A:65:ILE:HD11	1:A:154:ILE:HB	1.78	0.65
1:A:45:ASN:O	4:A:624:HOH:O	2.14	0.64
1:A:100:ARG:HA	1:A:103[B]:VAL:CG1	2.27	0.64
1:B:213:ILE:HA	1:B:229:LEU:HD21	1.78	0.64
1:A:211:GLY:H	2:A:265:NAG:H62	1.62	0.64
1:B:258:ASN:ND2	1:B:259:GLY:H	1.92	0.64
1:A:45:ASN:OD1	4:A:627:HOH:O	2.15	0.64
1:B:174:GLN:HA	1:B:178:GLU:CG	2.27	0.64
1:B:173:ILE:HD13	4:B:568:HOH:O	1.95	0.64
1:B:111:SER:OG	1:B:114:ARG:NH2	2.31	0.64
1:A:30:ALA:O	1:A:44:PRO:HD3	1.98	0.63
1:A:65:ILE:HG21	1:A:168:PHE:CZ	2.33	0.63
1:A:162:ASP:O	1:A:166:ALA:N	2.30	0.63
1:B:60:ALA:HB3	1:B:152:GLY:HA3	1.80	0.63
1:B:199:PRO:HA	1:B:203:ILE:HD12	1.79	0.63
1:A:68:MET:SD	1:A:106:THR:HB	2.39	0.63
1:A:9:TYR:HB2	1:A:22:PHE:CD1	2.34	0.63

*Continued on next page...*

*Continued from previous page...*

Atom-1	Atom-2	Interatomic distance (Å)	Clash overlap (Å)
1:A:154:ILE:CD1	1:A:168:PHE:CB	2.76	0.63
1:B:144:ILE:HD13	1:B:175:MET:HE1	1.81	0.63
1:A:32:ASP:O	4:A:382:HOH:O	2.16	0.63
1:B:95:ILE:HG21	1:B:103:VAL:HG21	1.81	0.62
1:B:264:THR:HA	4:B:613:HOH:O	1.99	0.62
1:A:80:SER:HB3	1:A:107:LEU:HB3	1.80	0.62
1:A:174:GLN:HA	1:A:178:GLU:CG	2.30	0.62
1:A:226:PRO:HB2	1:A:227:LYS:HE2	1.81	0.62
1:B:170:LEU:O	1:B:174:GLN:HG3	1.99	0.62
1:A:75:TYR:HA	3:A:501:ADE:C2	2.34	0.62
1:B:123:SER:O	3:B:601:ADE:N7	2.32	0.62
1:B:213:ILE:HG12	1:B:229:LEU:HD21	1.80	0.62
1:A:131:LYS:O	1:A:163:LYS:HA	1.99	0.62
1:A:154:ILE:HD11	1:A:168:PHE:CB	2.30	0.62
1:B:4:ILE:HD12	1:B:106:THR:HG23	1.78	0.62
1:A:38:TYR:CB	1:A:244:VAL:HG11	2.30	0.62
1:A:36[A]:GLN:OE1	1:A:39:GLY:HA2	2.00	0.62
1:A:74:LEU:HD22	1:A:253:LEU:HD12	1.82	0.61
1:A:173:ILE:CD1	4:A:590:HOH:O	2.47	0.61
1:A:199:PRO:HA	1:A:203:ILE:HD12	1.82	0.61
2:A:265:NAG:C7	4:A:530:HOH:O	2.48	0.61
1:A:65:ILE:HG13	1:A:155:SER:HB2	1.82	0.61
1:B:14:THR:CG2	1:B:144:ILE:HG21	2.29	0.61
1:A:123:SER:HB2	4:A:590:HOH:O	2.00	0.61
1:B:83:PHE:O	1:B:86:ASN:ND2	2.34	0.61
1:A:53[A]:LEU:HD11	1:A:69:LEU:HD22	1.83	0.61
1:B:66:THR:O	1:B:79:TYR:HA	2.00	0.61
1:A:154:ILE:CD1	1:A:165:GLU:HA	2.30	0.61
1:B:201:ASP:HB2	1:B:236:GLY:HA2	1.83	0.61
1:A:63:LYS:HE3	1:A:152:GLY:HA2	1.82	0.61
1:B:4:ILE:HD12	1:B:106:THR:HG21	1.83	0.61
1:B:214:SER:HA	1:B:254:LEU:HD22	1.83	0.61
1:A:154:ILE:CD1	1:A:168:PHE:HB3	2.30	0.61
1:A:53[B]:LEU:CD1	1:A:55:VAL:HG23	2.31	0.60
1:A:7:ILE:HD11	1:A:53[B]:LEU:CD2	2.25	0.60
1:A:69:LEU:HA	1:A:75:TYR:O	2.01	0.60
1:A:211:GLY:CA	2:A:265:NAG:H61	2.31	0.60
1:B:43:LEU:HD12	1:B:210:TRP:CH2	2.37	0.60
1:B:43:LEU:HD12	1:B:210:TRP:HH2	1.65	0.60
1:B:178:GLU:OE1	1:B:178:GLU:HA	2.01	0.60
1:B:69:LEU:HA	1:B:75:TYR:O	2.02	0.60

*Continued on next page...*

*Continued from previous page...*

Atom-1	Atom-2	Interatomic distance (Å)	Clash overlap (Å)
1:B:132:ALA:HB1	1:B:167:LYS:HG3	1.83	0.60
1:A:38:TYR:CZ	1:A:262:GLN:HB3	2.37	0.59
1:A:99:GLU:O	1:A:103[A]:VAL:HG23	2.02	0.59
1:B:68:MET:HG2	1:B:77:MET:HE3	1.83	0.59
1:B:41:PRO:HG2	1:B:253:LEU:HD23	1.84	0.59
1:B:128:LEU:CD2	4:B:644:HOH:O	2.47	0.59
1:B:213:ILE:CG1	1:B:229:LEU:HD21	2.32	0.59
1:A:173:ILE:HD13	4:A:590:HOH:O	2.02	0.59
1:B:239:TRP:CH2	1:B:247:ILE:HD13	2.38	0.59
1:A:91:ILE:CG2	1:A:103[B]:VAL:HG11	2.33	0.59
1:B:50:ILE:HD11	4:B:379:HOH:O	2.02	0.59
1:B:94:ASP:HB3	1:B:122:ASN:HB3	1.84	0.59
1:A:15:THR:HB	1:B:191:THR:OG1	2.03	0.59
1:A:205:ASP:OD2	1:A:231:LEU:HA	2.03	0.59
1:B:5:ASN:HB2	1:B:29[A]:GLU:CD	2.23	0.59
1:B:57:LEU:O	1:B:64:THR:HA	2.02	0.59
1:A:65:ILE:HG21	1:A:168:PHE:HZ	1.67	0.59
2:A:265:NAG:N2	4:A:530:HOH:O	2.32	0.59
1:B:111:SER:O	1:B:112:SER:C	2.40	0.59
1:A:91:ILE:HG22	1:A:95:ILE:HB	1.84	0.58
1:A:181:ARG:HA	1:A:253:LEU:HB2	1.84	0.58
1:B:14:THR:HG21	1:B:144:ILE:HG21	1.85	0.58
1:B:229:LEU:HB3	1:B:241:VAL:HB	1.85	0.58
1:B:86:ASN:OD1	1:B:115:ASP:HB3	2.01	0.58
1:A:90:HIS:HA	1:A:117:LYS:O	2.03	0.58
1:B:95:ILE:O	1:B:100:ARG:CD	2.50	0.58
1:A:50:ILE:O	1:A:71:ARG:NH1	2.30	0.58
1:B:153:LYS:O	1:B:157:GLN:HG3	2.04	0.58
1:A:255:ASN:OD1	2:A:265:NAG:O7	2.22	0.58
1:B:38:TYR:CG	1:B:244:VAL:HG11	2.39	0.58
1:B:10:ASP:HA	1:B:58[B]:GLN:HB3	1.85	0.58
1:B:65:ILE:HD12	1:B:151:ILE:HA	1.85	0.58
1:B:7:ILE:HD11	1:B:29[A]:GLU:HB2	1.84	0.57
1:B:202:LYS:NZ	1:B:250:ASP:OD2	2.33	0.57
1:B:68:MET:CE	1:B:103:VAL:HA	2.34	0.57
1:B:241:VAL:HG13	1:B:246:GLU:HB2	1.85	0.57
1:A:211:GLY:HA3	2:A:265:NAG:H61	1.85	0.57
1:B:144:ILE:HG13	1:B:193:PHE:CE1	2.39	0.57
1:A:117:LYS:HD3	1:A:160:PHE:CZ	2.38	0.57
1:A:154:ILE:CD1	1:A:168:PHE:CG	2.81	0.57
1:A:222:ASN:HA	1:A:262:GLN:OE1	2.05	0.57

*Continued on next page...*



*Continued from previous page...*

Atom-1	Atom-2	Interatomic distance (Å)	Clash overlap (Å)
1:B:80:SER:HB3	1:B:107:LEU:HB3	1.84	0.57
1:A:7:ILE:HD11	1:A:29[B]:GLU:HB2	1.86	0.57
1:A:213:ILE:HA	1:A:229:LEU:HD21	1.85	0.57
1:B:38:TYR:CZ	1:B:262:GLN:HB2	2.40	0.57
1:B:125:TYR:OH	1:B:178:GLU:OE2	2.21	0.57
1:A:4:ILE:HD13	1:A:106:THR:HG23	1.80	0.57
1:A:181:ARG:HG2	1:A:210:TRP:CZ2	2.39	0.57
1:A:30:ALA:HB1	1:A:74:LEU:HD13	1.87	0.57
1:A:78:GLY:HA3	4:A:546:HOH:O	2.05	0.57
1:B:91:ILE:HG21	1:B:100:ARG:HD2	1.88	0.56
1:A:4:ILE:HD12	1:A:106:THR:HG21	1.87	0.56
1:A:37:CYS:HB2	1:A:254:LEU:HD11	1.87	0.56
1:A:198:SER:HB3	4:A:323:HOH:O	2.06	0.56
1:B:92:PHE:CE1	1:B:169:LEU:HD13	2.40	0.56
1:B:111:SER:HA	4:B:528:HOH:O	2.04	0.56
1:B:9:TYR:HB2	1:B:22:PHE:CD1	2.41	0.56
1:B:195:ARG:NH2	4:B:612:HOH:O	2.38	0.56
1:B:81:ASP:HB2	1:B:155:SER:HA	1.86	0.56
1:A:211:GLY:N	2:A:265:NAG:H62	2.20	0.56
1:B:108:CYS:O	1:B:111:SER:N	2.38	0.56
1:A:33:PRO:HB3	4:A:559:HOH:O	2.05	0.56
1:A:53[A]:LEU:HD23	1:A:71:ARG:HG2	1.87	0.56
1:A:121:TYR:HB2	1:A:127:THR:CG2	2.36	0.56
1:A:211:GLY:HA3	2:A:265:NAG:O5	2.06	0.55
1:B:225:LEU:HD13	1:B:229:LEU:HB2	1.87	0.55
1:A:52:TYR:CG	1:A:68:MET:CE	2.89	0.55
1:A:233:ASN:ND2	4:A:403:HOH:O	2.38	0.55
1:B:75:TYR:HA	3:B:601:ADE:N1	2.21	0.55
1:A:66:THR:O	1:A:79:TYR:HA	2.06	0.55
1:B:159:SER:HB2	4:B:512:HOH:O	2.07	0.55
1:B:201:ASP:CB	1:B:236:GLY:HA2	2.37	0.55
1:B:192:ASN:OD1	1:B:195:ARG:NH1	2.37	0.55
1:B:218:HIS:NE2	1:B:259:GLY:O	2.40	0.55
1:A:16:ILE:HG12	1:A:193:PHE:CB	2.36	0.55
1:A:27:ARG:NH2	1:A:179:ALA:O	2.39	0.55
1:A:191:THR:O	1:B:16:ILE:HB	2.06	0.55
1:B:91:ILE:HG22	1:B:95:ILE:HB	1.87	0.55
1:B:121:TYR:CG	1:B:131:LYS:HG3	2.41	0.55
1:A:104:GLU:HG2	1:A:114:ARG:NH1	2.22	0.55
1:B:43:LEU:CD1	1:B:210:TRP:HH2	2.20	0.55
1:B:27:ARG:NH2	1:B:179:ALA:O	2.39	0.55

*Continued on next page...*

*Continued from previous page...*

Atom-1	Atom-2	Interatomic distance (Å)	Clash overlap (Å)
1:B:83:PHE:CE1	1:B:158:SER:CA	2.85	0.55
1:A:43:LEU:HD22	1:A:71:ARG:O	2.06	0.55
1:A:69:LEU:HD11	1:A:76:VAL:HG22	1.87	0.55
1:B:174:GLN:HA	1:B:178:GLU:HB2	1.88	0.55
1:A:37:CYS:SG	1:A:42:MET:HE3	2.47	0.54
1:A:160:PHE:CE1	1:A:165:GLU:HB2	2.42	0.54
1:B:67:LEU:O	4:B:656:HOH:O	2.18	0.54
1:B:70:ARG:HH11	1:B:73:ASN:ND2	2.03	0.54
1:A:105:ASN:HA	1:A:114:ARG:NH2	2.23	0.54
1:A:4:ILE:HD12	1:A:52:TYR:HB2	1.90	0.54
1:A:114:ARG:NH2	4:A:632:HOH:O	2.40	0.54
1:B:181:ARG:HD3	1:B:210:TRP:CD2	2.43	0.54
1:A:224:ALA:HB2	1:A:243:ARG:HH12	1.73	0.54
1:B:25:SER:O	1:B:29[B]:GLU:HG2	2.07	0.54
1:B:29[B]:GLU:O	1:B:71:ARG:NE	2.40	0.54
1:B:63:LYS:HB3	1:B:155:SER:HB3	1.88	0.54
1:A:87:CYS:HB2	1:A:111:SER:CB	2.37	0.54
1:A:91:ILE:HG12	4:A:546:HOH:O	2.06	0.54
1:A:102:ASN:HA	4:A:425:HOH:O	2.07	0.54
1:A:241:VAL:HG11	1:A:247:ILE:HB	1.90	0.54
1:B:89:TYR:CE2	1:B:114:ARG:HD3	2.42	0.54
1:A:32:ASP:HB2	1:A:44:PRO:HA	1.89	0.54
1:A:63:LYS:HB3	1:A:155:SER:HB3	1.89	0.54
1:A:228:PRO:HB3	1:A:240:ILE:CG2	2.37	0.54
1:A:74:LEU:HD22	1:A:253:LEU:CD1	2.38	0.54
1:A:91:ILE:HG21	1:A:103[B]:VAL:HG11	1.89	0.54
1:B:78:GLY:HA3	1:B:90:HIS:O	2.08	0.54
1:B:205:ASP:OD1	4:B:410:HOH:O	2.19	0.54
1:A:57:LEU:O	1:A:64:THR:HA	2.08	0.54
1:A:65:ILE:HG23	1:A:79:TYR:CD1	2.43	0.54
1:A:55:VAL:N	1:A:67:LEU:O	2.28	0.53
1:A:35:LEU:HD11	1:A:256:TYR:HE1	1.72	0.53
1:A:83:PHE:CE1	1:A:158:SER:CA	2.91	0.53
1:A:51[A]:LYS:HG3	4:A:380:HOH:O	2.06	0.53
1:B:91:ILE:HG12	1:B:103:VAL:CG1	2.39	0.53
1:B:233:ASN:ND2	4:B:406:HOH:O	2.42	0.53
1:A:40:ILE:HD12	1:A:217:ILE:HG21	1.89	0.53
1:B:70:ARG:O	1:B:74:LEU:N	2.42	0.53
1:B:88:ARG:HA	1:B:115:ASP:O	2.08	0.53
1:B:23:MET:HG3	1:B:186:GLU:CG	2.39	0.53
1:B:76:VAL:N	3:B:601:ADE:N1	2.46	0.53

*Continued on next page...*

*Continued from previous page...*

Atom-1	Atom-2	Interatomic distance (Å)	Clash overlap (Å)
1:B:149:SER:O	1:B:153:LYS:HG3	2.09	0.53
1:A:52:TYR:CG	1:A:68:MET:HE2	2.44	0.53
1:A:53[B]:LEU:HD11	1:A:55:VAL:HG23	1.91	0.53
1:A:88:ARG:HA	1:A:115:ASP:O	2.09	0.53
1:A:19:TYR:HB2	1:A:193:PHE:CE1	2.44	0.52
1:A:91:ILE:HD13	1:A:103[B]:VAL:HG13	1.91	0.52
1:A:132:ALA:O	1:A:167:LYS:HE3	2.09	0.52
1:B:122:ASN:OD1	1:B:127:THR:OG1	2.15	0.52
1:B:213:ILE:HG21	1:B:251:MET:SD	2.49	0.52
1:A:5:ASN:O	1:A:53[B]:LEU:HD22	2.09	0.52
1:A:160:PHE:CD1	1:A:165:GLU:HB2	2.45	0.52
1:A:188:GLN:CB	1:A:203:ILE:HD11	2.40	0.52
1:A:260:THR:OG1	4:A:648:HOH:O	2.14	0.52
1:B:26:LEU:HD23	1:B:180:ALA:HB2	1.92	0.52
1:A:88:ARG:HD2	1:A:117:LYS:HB2	1.91	0.52
1:A:132:ALA:CB	1:A:167:LYS:HG3	2.39	0.52
1:B:38:TYR:HB3	1:B:244:VAL:HG11	1.90	0.52
1:B:31:LYS:HB2	1:B:41:PRO:HB2	1.91	0.52
1:B:258:ASN:ND2	1:B:259:GLY:N	2.52	0.52
1:A:159:SER:OG	4:A:528:HOH:O	2.18	0.52
1:B:108:CYS:O	1:B:111:SER:HA	2.09	0.52
1:A:28:ASN:HA	1:A:31:LYS:HE2	1.91	0.51
1:A:201:ASP:HB2	1:A:236:GLY:HA2	1.91	0.51
1:B:239:TRP:CE2	1:B:241:VAL:HG22	2.44	0.51
1:A:190:LYS:O	1:A:193:PHE:HB2	2.10	0.51
1:A:238:LYS:HD3	1:A:240:ILE:HD11	1.90	0.51
1:B:10:ASP:HA	1:B:58[A]:GLN:HB3	1.92	0.51
1:A:35:LEU:O	4:A:382:HOH:O	2.19	0.51
1:A:70:ARG:HD3	4:A:454:HOH:O	2.10	0.51
1:A:31:LYS:HD2	1:A:41:PRO:HB3	1.92	0.51
1:B:58[A]:GLN:NE2	1:B:62:GLN:HG3	2.24	0.51
1:B:218:HIS:CD2	1:B:261:CYS:HB3	2.46	0.51
1:A:9:TYR:O	1:A:57:LEU:HA	2.11	0.51
1:A:14:THR:HG21	1:A:144:ILE:HG21	1.91	0.51
1:A:73:ASN:HB3	2:A:265:NAG:O7	2.11	0.51
2:A:265:NAG:H83	4:A:530:HOH:O	2.10	0.51
1:B:160:PHE:CE1	1:B:165:GLU:HB2	2.46	0.51
1:B:178:GLU:HB3	1:B:185:ILE:HD13	1.92	0.51
1:A:10:ASP:HA	1:A:58:GLN:HB3	1.92	0.51
1:B:111:SER:O	1:B:113:SER:N	2.43	0.51
1:B:111:SER:HB3	4:B:434:HOH:O	2.10	0.51

*Continued on next page...*

*Continued from previous page...*

Atom-1	Atom-2	Interatomic distance (Å)	Clash overlap (Å)
1:A:213:ILE:HG21	1:A:251:MET:SD	2.51	0.51
1:B:53:LEU:CD1	1:B:55:VAL:HG23	2.41	0.51
1:B:222:ASN:H	1:B:262:GLN:CD	2.14	0.51
1:A:178:GLU:CD	1:A:181:ARG:HH11	2.15	0.51
1:B:24:GLU:HG3	4:B:276:HOH:O	2.10	0.51
1:A:92:PHE:HA	1:A:119:ILE:HB	1.93	0.50
1:A:57:LEU:HB3	1:A:151:ILE:HD11	1.92	0.50
1:A:68:MET:HB2	1:A:107:LEU:CD2	2.41	0.50
1:A:81:ASP:HB2	1:A:155:SER:HA	1.92	0.50
1:B:54:LEU:HD21	1:B:106:THR:HG22	1.92	0.50
1:B:66:THR:HB	1:B:80:SER:OG	2.11	0.50
1:B:74:LEU:HD12	1:B:180:ALA:HB3	1.93	0.50
1:B:217:ILE:CD1	1:B:251:MET:HG3	2.42	0.50
1:A:143:GLY:HA3	4:A:270:HOH:O	2.11	0.50
1:A:128:LEU:HB2	1:A:170:LEU:HD21	1.94	0.50
1:A:145:GLN:HE22	1:A:194:ASN:C	2.15	0.50
1:B:179:ALA:HA	1:B:185:ILE:HB	1.94	0.50
1:A:91:ILE:CG2	1:A:95:ILE:HB	2.42	0.50
1:A:154:ILE:HD12	1:A:168:PHE:CB	2.39	0.50
1:B:38:TYR:N	1:B:262:GLN:O	2.40	0.50
1:A:52:TYR:CD2	1:A:68:MET:HE3	2.47	0.50
1:A:53[B]:LEU:HD22	1:A:54:LEU:N	2.27	0.50
1:B:109:SER:C	1:B:111:SER:N	2.54	0.50
1:B:128:LEU:HB3	1:B:170:LEU:HG	1.93	0.50
1:B:138:SER:HA	1:B:199:PRO:HG2	1.94	0.50
1:A:212:LYS:HD2	4:A:535:HOH:O	2.12	0.50
1:B:101:THR:HG22	1:B:105:ASN:ND2	2.24	0.50
1:B:225:LEU:CD1	1:B:229:LEU:HB2	2.41	0.50
1:A:141:GLN:NE2	1:A:196:ASP:HB3	2.27	0.49
1:B:9:TYR:O	1:B:57:LEU:HA	2.11	0.49
1:B:32:ASP:OD2	4:B:360:HOH:O	2.20	0.49
1:B:121:TYR:HB2	1:B:127:THR:CG2	2.42	0.49
1:A:16:ILE:HG21	4:B:337:HOH:O	2.11	0.49
1:B:92:PHE:HA	1:B:119:ILE:HB	1.94	0.49
1:A:67:LEU:HD11	1:A:172:ALA:HB1	1.93	0.49
1:B:14:THR:HG21	1:B:144:ILE:CG2	2.41	0.49
1:B:36:GLN:HA	1:B:40:ILE:O	2.13	0.49
1:B:73:ASN:OD1	1:B:75:TYR:HB2	2.12	0.49
1:A:32:ASP:HB2	1:A:44:PRO:CA	2.42	0.49
1:A:81:ASP:OD1	1:A:88:ARG:HB3	2.12	0.49
1:A:201:ASP:CB	1:A:236:GLY:HA2	2.41	0.49

*Continued on next page...*

*Continued from previous page...*

Atom-1	Atom-2	Interatomic distance (Å)	Clash overlap (Å)
1:A:255:ASN:HD21	2:A:265:NAG:C1	2.25	0.49
1:B:83:PHE:HB3	1:B:88:ARG:HB2	1.94	0.49
1:B:140:VAL:HG21	1:B:170:LEU:HD13	1.94	0.49
1:A:119:ILE:C	1:A:121:TYR:H	2.16	0.49
1:B:52:TYR:CB	1:B:68:MET:HE3	2.43	0.49
1:B:154:ILE:HD11	1:B:165:GLU:HA	1.95	0.49
1:A:123:SER:HB3	4:A:509:HOH:O	2.12	0.49
1:A:182:PHE:CZ	1:A:210:TRP:CD1	3.01	0.49
1:B:16:ILE:CG2	1:B:190[B]:LYS:HD2	2.42	0.49
1:B:27:ARG:HD2	4:B:365:HOH:O	2.12	0.49
1:B:220:ALA:HA	1:B:226:PRO:HD3	1.94	0.49
1:B:233:ASN:ND2	1:B:239:TRP:HB2	2.28	0.49
1:A:9:TYR:HH	1:A:14:THR:HG1	1.56	0.49
1:A:65:ILE:HG13	1:A:151:ILE:HG23	1.94	0.49
1:B:87:CYS:O	1:B:114:ARG:HA	2.13	0.49
1:A:132:ALA:O	1:A:163:LYS:HE3	2.12	0.48
1:B:162:ASP:O	1:B:166:ALA:N	2.43	0.48
1:B:4:ILE:HA	1:B:50:ILE:CD1	2.43	0.48
1:B:143:GLY:HA3	4:B:303:HOH:O	2.11	0.48
1:B:153:LYS:C	1:B:157:GLN:HG3	2.34	0.48
1:B:213:ILE:HA	1:B:229:LEU:CD2	2.43	0.48
1:A:70:ARG:O	1:A:74:LEU:HA	2.13	0.48
1:A:174:GLN:HA	1:A:178:GLU:HB2	1.95	0.48
1:B:91:ILE:HG12	1:B:103:VAL:HG12	1.93	0.48
1:B:181:ARG:HA	1:B:253:LEU:HB2	1.94	0.48
1:A:262:GLN:HB2	4:A:342:HOH:O	2.13	0.48
1:A:87:CYS:HB2	1:A:111:SER:OG	2.12	0.48
1:A:213:ILE:CG1	1:A:229:LEU:HD21	2.41	0.48
1:B:44:PRO:O	1:B:72:ASN:HA	2.14	0.48
1:B:213:ILE:HG12	1:B:231:LEU:HD11	1.95	0.48
1:A:76:VAL:N	3:A:501:ADE:N1	2.54	0.48
1:A:229:LEU:HG	1:A:231:LEU:HD21	1.95	0.48
1:B:65:ILE:HG21	1:B:168:PHE:CZ	2.48	0.48
1:A:43:LEU:HD12	1:A:210:TRP:CH2	2.48	0.48
1:A:53[B]:LEU:HD11	1:A:55:VAL:CG2	2.44	0.48
1:A:56:LYS:HG3	1:A:66:THR:OG1	2.13	0.48
1:B:66:THR:O	1:B:79:TYR:CA	2.62	0.48
1:B:12:GLY:O	4:B:446:HOH:O	2.20	0.48
1:B:37:CYS:HB2	1:B:254:LEU:CD1	2.43	0.48
1:B:174:GLN:HA	1:B:178:GLU:CB	2.44	0.48
1:A:35:LEU:HD11	1:A:256:TYR:CE1	2.48	0.48

*Continued on next page...*

*Continued from previous page...*

Atom-1	Atom-2	Interatomic distance (Å)	Clash overlap (Å)
1:A:133:GLU:HB2	1:A:163:LYS:HE3	1.95	0.48
1:A:218:HIS:CD2	1:A:261:CYS:HB3	2.49	0.47
1:B:36:GLN:NE2	4:B:613:HOH:O	2.47	0.47
1:A:59:GLY:HA3	1:A:151:ILE:HB	1.96	0.47
1:A:94:ASP:CG	1:A:122:ASN:HB2	2.35	0.47
1:A:121:TYR:HB3	1:A:131:LYS:NZ	2.29	0.47
1:B:95:ILE:O	1:B:100:ARG:HG2	2.13	0.47
1:A:102:ASN:O	1:A:106:THR:N	2.38	0.47
1:B:12:GLY:HA2	1:B:148:SER:OG	2.15	0.47
1:B:121:TYR:CD1	4:B:644:HOH:O	2.55	0.47
1:B:243[B]:ARG:CB	1:B:245[B]:ASP:OD2	2.57	0.47
1:A:52:TYR:OH	1:A:99:GLU:HG2	2.13	0.47
1:A:11:ALA:N	1:A:58:GLN:O	2.45	0.47
1:A:19:TYR:OH	1:A:179:ALA:CB	2.63	0.47
1:A:42:MET:HE1	1:A:257:VAL:HB	1.96	0.47
1:A:65:ILE:HG23	1:A:79:TYR:HD1	1.79	0.47
1:A:147:LEU:HD13	1:A:171:VAL:HG12	1.96	0.47
1:B:31:LYS:HD2	4:B:341:HOH:O	2.13	0.47
1:B:90:HIS:HB3	1:B:119:ILE:HG13	1.97	0.47
1:B:91:ILE:CG2	1:B:95:ILE:HB	2.45	0.47
1:B:174:GLN:O	1:B:178:GLU:HB2	2.15	0.47
1:B:184:TYR:O	1:B:188:GLN:HG2	2.15	0.47
1:A:9:TYR:HB3	1:A:57:LEU:HD23	1.97	0.47
1:A:83:PHE:O	1:A:86:ASN:HB2	2.15	0.47
1:A:170:LEU:O	1:A:174:GLN:HG3	2.15	0.47
1:A:178:GLU:HB3	1:A:185:ILE:HD13	1.97	0.47
1:A:229:LEU:HB3	1:A:241:VAL:HB	1.97	0.47
1:A:230:GLU:HG2	1:A:240:ILE:HD12	1.97	0.47
1:A:100:ARG:C	1:A:103[B]:VAL:HG12	2.36	0.47
1:A:135:ASN:N	1:A:139:GLN:OE1	2.48	0.47
1:B:30:ALA:O	1:B:44:PRO:HD3	2.15	0.47
1:B:70:ARG:HD3	4:B:631:HOH:O	2.14	0.47
1:B:95:ILE:CG2	1:B:99:GLU:HG2	2.34	0.47
1:B:200:ASN:HB2	1:B:234:ALA:O	2.15	0.47
1:A:38:TYR:N	1:A:262:GLN:O	2.39	0.47
1:B:53:LEU:HD11	1:B:69:LEU:HD22	1.97	0.47
1:A:46:ASN:O	1:A:51[B]:LYS:NZ	2.47	0.46
1:A:87:CYS:O	1:A:114:ARG:HA	2.15	0.46
1:B:43:LEU:CD1	1:B:210:TRP:CH2	2.96	0.46
1:B:65:ILE:HG21	1:B:168:PHE:HZ	1.78	0.46
1:B:92:PHE:CG	1:B:123:SER:HB3	2.50	0.46

*Continued on next page...*

*Continued from previous page...*

Atom-1	Atom-2	Interatomic distance (Å)	Clash overlap (Å)
1:A:9:TYR:CD1	1:A:22:PHE:HB2	2.50	0.46
1:A:30:ALA:CB	1:A:74:LEU:HD13	2.45	0.46
1:A:142:LEU:HG	1:A:199:PRO:HD3	1.98	0.46
2:A:265:NAG:H61	4:A:293:HOH:O	2.16	0.46
1:B:220:ALA:HB2	1:B:225:LEU:HD23	1.97	0.46
1:A:12:GLY:HA2	1:A:148:SER:OG	2.16	0.46
1:A:68:MET:HB2	1:A:107:LEU:HD21	1.97	0.46
1:B:55:VAL:HB	1:B:67:LEU:HB2	1.97	0.46
1:A:5:ASN:HB2	1:A:29[A]:GLU:OE1	2.16	0.46
1:A:83:PHE:CD2	1:A:88:ARG:HD3	2.50	0.46
1:A:7:ILE:CG2	1:A:22:PHE:HD1	2.29	0.46
1:A:173:ILE:HG23	3:A:501:ADE:C2	2.51	0.46
1:B:86:ASN:OD1	1:B:88:ARG:HB2	2.16	0.46
1:B:7:ILE:O	1:B:55:VAL:HA	2.16	0.46
1:B:89:TYR:HE2	1:B:114:ARG:HG3	1.81	0.46
1:B:63:LYS:HB3	1:B:155:SER:CB	2.45	0.46
1:B:80:SER:HB2	1:B:87:CYS:SG	2.56	0.46
1:B:188:GLN:CB	1:B:203:ILE:HD11	2.45	0.46
1:B:231:LEU:HB3	4:B:327:HOH:O	2.16	0.46
1:A:63:LYS:HD2	1:A:155:SER:O	2.15	0.46
1:A:70:ARG:O	1:A:74:LEU:N	2.49	0.46
1:B:18:LYS:HE2	4:B:285:HOH:O	2.16	0.46
1:B:88:ARG:HG2	1:B:90:HIS:CE1	2.50	0.46
1:A:7:ILE:CG2	1:A:22:PHE:CD1	2.99	0.45
2:A:265:NAG:C1	4:A:276:HOH:O	2.65	0.45
1:B:146:ILE:HD11	1:B:196:ASP:CG	2.36	0.45
1:B:178:GLU:CD	1:B:181:ARG:HH11	2.19	0.45
1:A:49:THR:HG21	4:A:502:HOH:O	2.16	0.45
1:A:53[B]:LEU:HD22	1:A:54:LEU:H	1.81	0.45
1:A:70:ARG:O	1:A:74:LEU:CA	2.65	0.45
1:B:27:ARG:HG2	1:B:253:LEU:HG	1.98	0.45
1:B:121:TYR:CB	1:B:131:LYS:HE3	2.38	0.45
1:B:174:GLN:HA	1:B:178:GLU:HG2	1.98	0.45
1:A:11:ALA:O	1:A:144:ILE:HG22	2.17	0.45
1:A:121:TYR:CG	1:A:131:LYS:HG3	2.50	0.45
1:A:179:ALA:HA	1:A:185:ILE:HB	1.97	0.45
1:B:68:MET:CB	4:B:625:HOH:O	2.27	0.45
1:B:70:ARG:HB3	1:B:73:ASN:OD1	2.17	0.45
1:A:38:TYR:O	1:A:248:LYS:NZ	2.42	0.45
1:B:239:TRP:CZ3	1:B:247:ILE:HD13	2.52	0.45
1:A:69:LEU:CD1	1:A:76:VAL:HG22	2.46	0.45

*Continued on next page...*

*Continued from previous page...*

Atom-1	Atom-2	Interatomic distance (Å)	Clash overlap (Å)
1:A:121:TYR:CE1	1:A:128:LEU:HD23	2.52	0.45
1:B:4:ILE:HA	1:B:50:ILE:HD11	1.99	0.45
1:B:38:TYR:O	1:B:248:LYS:NZ	2.44	0.45
1:B:62:GLN:NE2	4:B:491:HOH:O	2.29	0.45
1:B:174:GLN:HE21	1:B:207:GLU:CD	2.15	0.45
1:B:215:THR:O	1:B:219:ASP:N	2.41	0.45
1:A:78:GLY:HA3	1:A:90:HIS:O	2.16	0.45
1:B:40:ILE:HD12	1:B:217:ILE:HG21	1.99	0.45
1:B:46:ASN:HD21	1:B:72:ASN:ND2	2.15	0.45
1:B:92:PHE:HE1	1:B:169:LEU:HD13	1.81	0.45
1:B:123:SER:HB2	3:B:601:ADE:N6	2.11	0.45
1:B:202:LYS:O	1:B:206:LEU:HG	2.17	0.45
1:A:205:ASP:OD2	1:A:231:LEU:CA	2.64	0.45
1:B:27:ARG:O	1:B:31:LYS:HB3	2.17	0.45
1:B:70:ARG:CD	4:B:631:HOH:O	2.64	0.45
1:B:264:THR:HG22	4:B:613:HOH:O	2.17	0.45
1:A:38:TYR:HB3	1:A:244:VAL:HG11	1.97	0.45
1:A:178:GLU:HA	1:A:178:GLU:OE1	2.16	0.45
1:A:244:VAL:HG12	1:A:248:LYS:HB2	1.97	0.45
1:B:7:ILE:HG13	1:B:26:LEU:HA	1.99	0.45
1:B:54:LEU:HD23	1:B:54:LEU:HA	1.72	0.45
1:B:79:TYR:N	1:B:90:HIS:O	2.47	0.45
1:B:120:ASN:O	1:B:121:TYR:HB3	2.17	0.45
1:A:23:MET:O	1:A:27:ARG:HG3	2.17	0.45
1:A:56:LYS:HA	1:A:66:THR:HA	1.99	0.45
1:A:57:LEU:HB3	1:A:151:ILE:CD1	2.47	0.45
1:A:128:LEU:HB3	1:A:170:LEU:HG	1.99	0.45
1:B:29[A]:GLU:OE1	1:B:29[A]:GLU:HA	2.16	0.45
1:B:141:GLN:NE2	1:B:196:ASP:HB3	2.32	0.45
1:B:183:LYS:HG3	1:B:252:GLY:HA2	1.99	0.45
1:A:178:GLU:HB3	1:A:185:ILE:CD1	2.47	0.44
1:A:38:TYR:CG	1:A:244:VAL:HG11	2.53	0.44
1:A:204:LEU:HD23	4:A:647:HOH:O	2.17	0.44
1:A:220:ALA:HA	1:A:226:PRO:HD3	1.99	0.44
1:B:89:TYR:CZ	1:B:104:GLU:HG3	2.52	0.44
1:B:94:ASP:CG	1:B:122:ASN:HB2	2.38	0.44
1:B:239:TRP:CH2	1:B:247:ILE:CD1	3.00	0.44
1:A:7:ILE:HG22	1:A:22:PHE:HD1	1.82	0.44
1:A:200:ASN:HB2	1:A:234:ALA:O	2.17	0.44
1:B:79:TYR:CZ	1:B:90:HIS:CG	3.06	0.44
1:A:7:ILE:HG22	1:A:22:PHE:CD1	2.53	0.44

*Continued on next page...*



*Continued from previous page...*

Atom-1	Atom-2	Interatomic distance (Å)	Clash overlap (Å)
1:A:14:THR:HG21	1:A:144:ILE:CG2	2.47	0.44
1:A:202:LYS:HB2	1:A:234:ALA:N	2.33	0.44
1:A:53[B]:LEU:HD12	1:A:69:LEU:HB2	1.99	0.44
1:A:91:ILE:HG23	1:A:103[B]:VAL:HG11	1.98	0.44
1:A:140:VAL:HG21	1:A:170:LEU:CD1	2.48	0.44
1:A:174:GLN:O	1:A:178:GLU:HB2	2.18	0.44
1:A:239:TRP:HZ2	1:A:246:GLU:O	1.99	0.44
1:B:68:MET:CG	1:B:77:MET:HE3	2.46	0.44
1:B:108:CYS:O	1:B:111:SER:CB	2.65	0.44
1:B:144:ILE:HG13	1:B:193:PHE:CZ	2.51	0.44
1:A:43:LEU:HD12	1:A:210:TRP:HH2	1.82	0.44
1:A:102:ASN:O	1:A:106:THR:OG1	2.30	0.44
1:A:194:ASN:HD22	1:B:194:ASN:HD21	0.74	0.44
1:B:56:LYS:HA	1:B:66:THR:HA	1.99	0.44
1:B:137:ARG:HB3	1:B:170:LEU:HD22	2.00	0.44
1:B:249:PRO:HB3	4:B:474:HOH:O	2.18	0.44
1:A:100:ARG:O	1:A:103[B]:VAL:HG12	2.17	0.44
1:B:20:ALA:HB2	1:B:190[A]:LYS:NZ	2.33	0.44
1:B:178:GLU:HB3	1:B:185:ILE:CD1	2.47	0.44
1:B:38:TYR:HH	1:B:262:GLN:HG3	1.83	0.44
1:A:19:TYR:CB	1:A:193:PHE:CE1	3.01	0.43
1:A:63:LYS:HB3	1:A:155:SER:CB	2.48	0.43
1:A:74:LEU:HA	1:A:74:LEU:HD12	1.72	0.43
1:B:30:ALA:HB1	1:B:74:LEU:HD21	1.98	0.43
1:B:178:GLU:O	1:B:182:PHE:N	2.46	0.43
1:B:202:LYS:HB2	1:B:233:ASN:C	2.39	0.43
1:A:188:GLN:HB3	1:A:203:ILE:HD11	2.00	0.43
1:B:39:GLY:N	1:B:263:THR:O	2.47	0.43
1:A:43:LEU:HB3	1:A:71:ARG:O	2.18	0.43
1:B:119:ILE:CG2	1:B:121:TYR:CZ	3.01	0.43
1:B:184:TYR:HB2	1:B:250:ASP:HB3	2.00	0.43
1:A:124:LEU:O	1:A:127:THR:HB	2.18	0.43
1:A:183:LYS:HD2	1:A:251:MET:O	2.19	0.43
1:A:226:PRO:O	4:A:426:HOH:O	2.21	0.43
1:B:184:TYR:HB2	1:B:250:ASP:CB	2.48	0.43
1:B:243[B]:ARG:HB2	1:B:246:GLU:HG3	1.99	0.43
1:B:89:TYR:CE2	1:B:104:GLU:HG3	2.53	0.43
1:A:7:ILE:HD11	1:A:29[A]:GLU:CB	2.47	0.43
1:A:58:GLN:HA	1:A:64:THR:HA	2.01	0.43
1:A:185:ILE:HG12	1:A:203:ILE:HG23	2.01	0.43
1:A:7:ILE:HD11	1:A:29[A]:GLU:HB3	1.99	0.43

*Continued on next page...*

*Continued from previous page...*

Atom-1	Atom-2	Interatomic distance (Å)	Clash overlap (Å)
1:A:181:ARG:HG2	1:A:210:TRP:CE2	2.53	0.43
1:B:65:ILE:HD13	1:B:168:PHE:CZ	2.54	0.43
1:A:66:THR:O	1:A:79:TYR:CA	2.66	0.43
1:B:50:ILE:O	1:B:71:ARG:NH1	2.43	0.43
1:B:65:ILE:HG23	1:B:79:TYR:CD1	2.54	0.43
1:A:211:GLY:HA3	2:A:265:NAG:C6	2.49	0.43
1:B:74:LEU:HD11	1:B:180:ALA:CB	2.49	0.43
1:A:9:TYR:HB2	1:A:22:PHE:CE1	2.53	0.43
1:A:66:THR:O	1:A:79:TYR:HB2	2.18	0.43
1:A:44:PRO:HG3	1:A:71:ARG:CZ	2.49	0.42
1:A:121:TYR:HB2	1:A:127:THR:HG21	2.01	0.42
1:A:137:ARG:HH22	1:A:208:GLU:HG3	1.84	0.42
1:B:104:GLU:CD	1:B:114:ARG:HH11	2.22	0.42
1:B:216:ALA:HB2	1:B:229:LEU:HD13	2.01	0.42
1:A:6:THR:CG2	1:A:56:LYS:HB2	2.49	0.42
1:A:35:LEU:CD1	1:A:256:TYR:CE1	3.03	0.42
1:A:130:LYS:HD3	4:A:391:HOH:O	2.19	0.42
1:A:171:VAL:O	1:A:175:MET:HG3	2.20	0.42
1:A:4:ILE:HA	1:A:50:ILE:HG23	2.01	0.42
1:A:36[A]:GLN:NE2	1:A:263:THR:O	2.52	0.42
1:A:199:PRO:HB2	1:A:204:LEU:CD1	2.50	0.42
1:B:43:LEU:HD22	1:B:71:ARG:O	2.19	0.42
1:B:108:CYS:HB3	4:B:528:HOH:O	2.20	0.42
1:B:125:TYR:OH	1:B:178:GLU:CG	2.67	0.42
1:A:173:ILE:HD11	4:A:590:HOH:O	2.15	0.42
1:A:209:ASN:OD1	1:A:212:LYS:HD3	2.18	0.42
1:B:79:TYR:CE1	1:B:154:ILE:HG21	2.55	0.42
1:A:19:TYR:O	1:A:22:PHE:HB3	2.20	0.42
1:A:43:LEU:CD1	1:A:210:TRP:HH2	2.32	0.42
1:A:43:LEU:CD1	1:A:210:TRP:CH2	3.03	0.42
1:A:45:ASN:HB3	1:A:256:TYR:CZ	2.55	0.42
1:A:52:TYR:CG	1:A:68:MET:HE3	2.54	0.42
1:B:23:MET:HE1	1:B:176:VAL:HA	2.01	0.42
1:A:4:ILE:HD13	1:A:106:THR:HG22	1.91	0.42
1:A:16:ILE:HG23	1:A:190:LYS:HD2	2.01	0.42
1:A:79:TYR:O	1:A:90:HIS:HD2	2.03	0.42
1:A:202:LYS:HB2	1:A:233:ASN:C	2.40	0.42
1:B:78:GLY:CA	1:B:90:HIS:O	2.68	0.42
1:A:89:TYR:HB3	1:A:108:CYS:SG	2.60	0.42
1:A:144:ILE:CG1	1:A:193:PHE:CE1	3.02	0.42
1:A:174:GLN:HA	1:A:178:GLU:CB	2.49	0.42

*Continued on next page...*

*Continued from previous page...*

Atom-1	Atom-2	Interatomic distance (Å)	Clash overlap (Å)
1:B:69:LEU:HD11	1:B:76:VAL:HG22	2.00	0.42
1:B:81:ASP:CB	1:B:155:SER:HA	2.49	0.42
1:B:218:HIS:CE1	1:B:258:ASN:O	2.73	0.42
1:A:146:ILE:O	1:A:150:ASP:N	2.42	0.42
1:A:77:MET:CE	1:A:103[A]:VAL:CG2	2.98	0.41
1:A:79:TYR:CE1	1:A:90:HIS:CD2	3.08	0.41
1:A:186:GLU:HG2	1:A:190:LYS:HE2	2.01	0.41
1:A:255:ASN:O	1:A:257:VAL:HG23	2.20	0.41
1:A:50:ILE:HG21	4:A:457:HOH:O	2.19	0.41
1:B:6:THR:HA	1:B:54:LEU:HB2	2.01	0.41
1:B:173:ILE:HD11	4:B:568:HOH:O	2.13	0.41
1:B:62:GLN:N	1:B:62:GLN:CD	2.74	0.41
1:B:228:PRO:HB3	1:B:240:ILE:CG2	2.49	0.41
3:B:601:ADE:N6	4:B:568:HOH:O	2.53	0.41
1:A:231:LEU:CD1	1:A:247:ILE:HD13	2.50	0.41
1:B:46:ASN:ND2	1:B:72:ASN:ND2	2.67	0.41
1:A:16:ILE:HG12	1:A:193:PHE:CG	2.56	0.41
1:A:79:TYR:CE1	1:A:154:ILE:HG21	2.55	0.41
1:A:89:TYR:CZ	1:A:104:GLU:HG3	2.56	0.41
1:A:92:PHE:CE1	1:A:119:ILE:HG21	2.55	0.41
1:A:134:VAL:HG11	1:A:140:VAL:CG2	2.49	0.41
1:A:150:ASP:HB3	1:A:168:PHE:HB2	2.03	0.41
1:B:107:LEU:HD23	1:B:107:LEU:HA	1.93	0.41
1:B:213:ILE:HG22	1:B:217:ILE:HD12	2.01	0.41
1:A:27:ARG:HD2	4:A:398:HOH:O	2.20	0.41
1:A:36[A]:GLN:HE21	1:A:36[A]:GLN:HB3	1.53	0.41
1:A:50:ILE:O	1:A:71:ARG:HD3	2.21	0.41
1:A:52:TYR:HD1	1:A:70:ARG:HA	1.85	0.41
1:A:144:ILE:HD13	1:A:175:MET:HE2	2.02	0.41
1:A:218:HIS:CG	1:A:257:VAL:HB	2.56	0.41
1:B:32:ASP:HA	1:B:33:PRO:HD2	1.80	0.41
1:B:70:ARG:O	1:B:74:LEU:HA	2.21	0.41
1:B:128:LEU:HB2	1:B:170:LEU:HD21	2.03	0.41
1:B:133:GLU:HB2	1:B:163:LYS:HE3	2.02	0.41
1:A:122:ASN:OD1	1:A:122:ASN:C	2.58	0.41
1:A:188:GLN:HG3	1:A:203:ILE:HD11	2.01	0.41
1:B:19:TYR:OH	1:B:179:ALA:CB	2.68	0.41
1:B:40:ILE:HG21	1:B:251:MET:HB3	2.02	0.41
1:B:52:TYR:CG	1:B:68:MET:CE	2.97	0.41
1:B:54:LEU:HD13	1:B:66:THR:HG21	2.02	0.41
1:B:89:TYR:HB3	1:B:108:CYS:SG	2.61	0.41

*Continued on next page...*

*Continued from previous page...*

Atom-1	Atom-2	Interatomic distance (Å)	Clash overlap (Å)
1:B:137:ARG:C	1:B:139:GLN:N	2.72	0.41
1:B:181:ARG:HG2	1:B:210:TRP:CZ2	2.55	0.41
1:B:186:GLU:HG2	1:B:190[B]:LYS:HE2	2.03	0.41
1:A:24:GLU:HG3	4:A:316:HOH:O	2.19	0.41
1:A:185:ILE:O	1:A:186:GLU:C	2.58	0.41
1:A:204:LEU:O	1:A:207:GLU:HB2	2.20	0.41
1:B:18:LYS:CE	4:B:285:HOH:O	2.68	0.41
1:B:40:ILE:CG2	1:B:254:LEU:HG	2.51	0.41
1:B:163:LYS:HG2	4:B:452:HOH:O	2.21	0.41
1:A:15:THR:O	1:A:16:ILE:C	2.59	0.41
1:A:40:ILE:CD1	1:A:217:ILE:HD13	2.51	0.41
1:A:52:TYR:CD1	1:A:68:MET:HE2	2.56	0.41
1:A:111:SER:HA	4:A:350:HOH:O	2.20	0.41
1:A:125:TYR:OH	1:A:178:GLU:HG3	2.21	0.41
1:A:132:ALA:HB3	1:A:134:VAL:HG22	2.02	0.41
1:B:70:ARG:NE	4:B:631:HOH:O	2.53	0.41
1:B:117:LYS:HD3	1:B:160:PHE:CZ	2.54	0.41
1:B:124:LEU:O	1:B:127:THR:HB	2.21	0.41
1:B:144:ILE:HD13	1:B:175:MET:CE	2.49	0.41
1:B:182:PHE:HB2	1:B:185:ILE:HD12	2.02	0.41
1:B:182:PHE:CZ	1:B:210:TRP:CD1	3.09	0.41
1:B:225:LEU:HB3	4:B:589:HOH:O	2.21	0.41
1:A:16:ILE:CG1	1:A:193:PHE:CB	2.98	0.41
1:A:172:ALA:O	1:A:176:VAL:HB	2.21	0.41
1:A:184:TYR:CZ	1:A:202:LYS:HD3	2.56	0.41
1:A:224:ALA:HB2	1:A:243:ARG:NH1	2.34	0.41
1:B:159:SER:HA	4:B:312:HOH:O	2.20	0.41
1:B:184:TYR:CE2	1:B:188:GLN:HG3	2.56	0.41
1:A:14:THR:OG1	1:A:15:THR:N	2.53	0.40
1:A:55:VAL:O	1:A:66:THR:HA	2.21	0.40
1:A:123:SER:CB	4:A:509:HOH:O	2.69	0.40
1:A:192:ASN:CB	1:A:197:PHE:CD2	3.04	0.40
1:B:55:VAL:O	1:B:67:LEU:N	2.45	0.40
1:B:78:GLY:HA3	1:B:91:ILE:HA	2.03	0.40
1:B:177:SER:O	1:B:181:ARG:HG3	2.21	0.40
1:B:189:VAL:O	1:B:193:PHE:HA	2.21	0.40
1:B:225:LEU:HD12	1:B:241:VAL:O	2.21	0.40
1:B:239:TRP:HZ2	1:B:246:GLU:O	2.04	0.40
1:B:261:CYS:SG	4:B:506:HOH:O	2.63	0.40
1:A:52:TYR:CD1	1:A:77:MET:SD	3.14	0.40
1:A:209:ASN:O	1:A:213:ILE:HG13	2.21	0.40

*Continued on next page...*

Continued from previous page...

Atom-1	Atom-2	Interatomic distance (Å)	Clash overlap (Å)
1:A:228:PRO:HB3	1:A:240:ILE:HG23	2.03	0.40
1:B:30:ALA:O	1:B:44:PRO:CD	2.70	0.40
1:B:88:ARG:NH2	1:B:157:GLN:O	2.52	0.40
1:B:129:GLU:OE2	1:B:137:ARG:NH1	2.45	0.40
1:A:22:PHE:HZ	1:A:55:VAL:HG11	1.86	0.40
1:A:92:PHE:CG	1:A:123:SER:HB3	2.56	0.40
1:A:184:TYR:HB2	1:A:250:ASP:CB	2.51	0.40
1:A:211:GLY:CA	2:A:265:NAG:C6	2.97	0.40
1:B:121:TYR:OH	1:B:165:GLU:HG2	2.21	0.40
1:B:137:ARG:NE	1:B:207:GLU:OE1	2.43	0.40
1:B:189:VAL:HA	1:B:197:PHE:CE2	2.55	0.40
1:A:41:PRO:HG2	1:A:252:GLY:O	2.21	0.40
1:A:77:MET:O	1:A:95:ILE:HG13	2.21	0.40

All (5) symmetry-related close contacts are listed below. The label for Atom-2 includes the symmetry operator and encoded unit-cell translations to be applied.

Atom-1	Atom-2	Interatomic distance (Å)	Clash overlap (Å)
1:A:28:ASN:ND2	1:A:238:LYS:NZ[1_545]	2.06	0.14
1:B:17:ASN:ND2	1:B:235:ASP:O[1_565]	2.06	0.14
1:A:104:GLU:OE2	1:B:111:SER:OG[3_445]	2.10	0.10
4:A:432:HOH:O	4:B:483:HOH:O[1_565]	2.13	0.07
4:B:390:HOH:O	4:B:508:HOH:O[1_545]	2.19	0.01

## 5.3 Torsion angles [i](#)

### 5.3.1 Protein backbone [i](#)

In the following table, the Percentiles column shows the percent Ramachandran outliers of the chain as a percentile score with respect to all X-ray entries followed by that with respect to entries of similar resolution.

The Analysed column shows the number of residues for which the backbone conformation was analysed, and the total number of residues.

Mol	Chain	Analysed	Favoured	Allowed	Outliers	Percentiles	
1	A	264/261 (101%)	253 (96%)	11 (4%)	0	100	100
1	B	264/261 (101%)	252 (96%)	10 (4%)	2 (1%)	19	5
All	All	528/522 (101%)	505 (96%)	21 (4%)	2 (0%)	34	16

All (2) Ramachandran outliers are listed below:

Mol	Chain	Res	Type
1	B	97	GLY
1	B	111	SER

### 5.3.2 Protein sidechains [i](#)

In the following table, the Percentiles column shows the percent sidechain outliers of the chain as a percentile score with respect to all X-ray entries followed by that with respect to entries of similar resolution.

The Analysed column shows the number of residues for which the sidechain conformation was analysed, and the total number of residues.

Mol	Chain	Analysed	Rotameric	Outliers	Percentiles	
1	A	238/233 (102%)	234 (98%)	4 (2%)	60	39
1	B	238/233 (102%)	229 (96%)	9 (4%)	33	10
All	All	476/466 (102%)	463 (97%)	13 (3%)	49	19

All (13) residues with a non-rotameric sidechain are listed below:

Mol	Chain	Res	Type
1	A	36[A]	GLN
1	A	36[B]	GLN
1	A	98	THR
1	A	263	THR
1	B	74	LEU
1	B	98	THR
1	B	109	SER
1	B	111	SER
1	B	227	LYS
1	B	245[A]	ASP
1	B	245[B]	ASP
1	B	258	ASN
1	B	263	THR

Sometimes sidechains can be flipped to improve hydrogen bonding and reduce clashes. All (12) such sidechains are listed below:

Mol	Chain	Res	Type
1	A	58	GLN
1	A	72	ASN

*Continued on next page...*

Continued from previous page...

Mol	Chain	Res	Type
1	A	222	ASN
1	A	233	ASN
1	A	255	ASN
1	B	72	ASN
1	B	90	HIS
1	B	157	GLN
1	B	194	ASN
1	B	233	ASN
1	B	258	ASN
1	B	262	GLN

### 5.3.3 RNA [i](#)

There are no RNA molecules in this entry.

## 5.4 Non-standard residues in protein, DNA, RNA chains [i](#)

There are no non-standard protein/DNA/RNA residues in this entry.

## 5.5 Carbohydrates [i](#)

There are no monosaccharides in this entry.

## 5.6 Ligand geometry [i](#)

5 ligands are modelled in this entry.

In the following table, the Counts columns list the number of bonds (or angles) for which Mogul statistics could be retrieved, the number of bonds (or angles) that are observed in the model and the number of bonds (or angles) that are defined in the Chemical Component Dictionary. The Link column lists molecule types, if any, to which the group is linked. The Z score for a bond length (or angle) is the number of standard deviations the observed value is removed from the expected value. A bond length (or angle) with  $|Z| > 2$  is considered an outlier worth inspection. RMSZ is the root-mean-square of all Z scores of the bond lengths (or angles).

Mol	Type	Chain	Res	Link	Bond lengths			Bond angles		
					Counts	RMSZ	# Z  > 2	Counts	RMSZ	# Z  > 2
2	NAG	A	265	-	14,14,15	1.54	4 (28%)	17,19,21	3.23	8 (47%)
2	NAG	A	3	1	14,14,15	0.73	0	17,19,21	1.30	2 (11%)
3	ADE	B	601	-	9,11,11	1.50	3 (33%)	7,15,15	2.44	3 (42%)

Mol	Type	Chain	Res	Link	Bond lengths			Bond angles		
					Counts	RMSZ	# Z  > 2	Counts	RMSZ	# Z  > 2
3	ADE	A	501	-	9,11,11	1.79	2 (22%)	7,15,15	2.38	6 (85%)
2	NAG	B	2	1	14,14,15	1.00	1 (7%)	17,19,21	1.72	3 (17%)

In the following table, the Chirals column lists the number of chiral outliers, the number of chiral centers analysed, the number of these observed in the model and the number defined in the Chemical Component Dictionary. Similar counts are reported in the Torsion and Rings columns. '-' means no outliers of that kind were identified.

Mol	Type	Chain	Res	Link	Chirals	Torsions	Rings
2	NAG	A	265	-	-	2/6/23/26	0/1/1/1
2	NAG	A	3	1	-	2/6/23/26	0/1/1/1
3	ADE	B	601	-	-	-	0/2/2/2
3	ADE	A	501	-	-	-	0/2/2/2
2	NAG	B	2	1	-	4/6/23/26	0/1/1/1

All (10) bond length outliers are listed below:

Mol	Chain	Res	Type	Atoms	Z	Observed(Å)	Ideal(Å)
3	A	501	ADE	C4-N3	-4.01	1.31	1.37
2	A	265	NAG	C1-C2	3.16	1.57	1.52
2	A	265	NAG	C2-N2	2.57	1.50	1.46
3	B	601	ADE	C4-N3	-2.55	1.33	1.37
2	A	265	NAG	C3-C2	2.35	1.57	1.52
3	A	501	ADE	C5-N7	-2.19	1.31	1.39
2	B	2	NAG	C3-C2	2.12	1.57	1.52
3	B	601	ADE	C5-C4	2.12	1.46	1.40
2	A	265	NAG	O5-C1	-2.08	1.40	1.43
3	B	601	ADE	C5-N7	-2.02	1.32	1.39

All (22) bond angle outliers are listed below:

Mol	Chain	Res	Type	Atoms	Z	Observed(°)	Ideal(°)
2	A	265	NAG	C1-C2-N2	-9.08	94.97	110.49
2	A	265	NAG	O7-C7-N2	4.89	130.94	121.95
2	A	265	NAG	C2-N2-C7	4.24	128.94	122.90
3	B	601	ADE	N3-C2-N1	-4.19	122.13	128.68
2	B	2	NAG	O5-C1-C2	-3.90	105.13	111.29
3	B	601	ADE	C2-N3-C4	3.67	122.04	113.45
2	A	265	NAG	O5-C5-C6	-3.57	101.60	107.20
2	A	265	NAG	C8-C7-N2	-3.30	110.51	116.10
2	B	2	NAG	C3-C4-C5	3.16	115.88	110.24

Continued on next page...



Continued from previous page...

Mol	Chain	Res	Type	Atoms	Z	Observed(°)	Ideal(°)
3	A	501	ADE	N6-C6-N1	2.98	124.77	118.57
3	A	501	ADE	N3-C2-N1	-2.89	124.16	128.68
3	A	501	ADE	C4-C5-N7	-2.58	106.71	109.40
2	B	2	NAG	C2-N2-C7	-2.48	119.36	122.90
3	A	501	ADE	C2-N1-C6	2.45	122.95	118.75
2	A	265	NAG	O3-C3-C2	-2.44	104.41	109.47
2	A	265	NAG	O7-C7-C8	-2.40	117.59	122.06
2	A	3	NAG	O5-C5-C6	-2.29	103.61	107.20
2	A	265	NAG	O5-C5-C4	-2.27	105.30	110.83
3	A	501	ADE	C2-N3-C4	2.22	118.64	113.45
3	B	601	ADE	C2-N1-C6	2.21	122.54	118.75
3	A	501	ADE	C5-C6-N1	-2.19	115.39	120.35
2	A	3	NAG	O7-C7-C8	-2.15	118.06	122.06

There are no chirality outliers.

All (8) torsion outliers are listed below:

Mol	Chain	Res	Type	Atoms
2	B	2	NAG	C8-C7-N2-C2
2	B	2	NAG	O7-C7-N2-C2
2	A	3	NAG	O5-C5-C6-O6
2	A	3	NAG	C4-C5-C6-O6
2	B	2	NAG	O5-C5-C6-O6
2	B	2	NAG	C4-C5-C6-O6
2	A	265	NAG	O5-C5-C6-O6
2	A	265	NAG	O7-C7-N2-C2

There are no ring outliers.

3 monomers are involved in 36 short contacts:

Mol	Chain	Res	Type	Clashes	Symm-Clashes
2	A	265	NAG	21	0
3	B	601	ADE	8	0
3	A	501	ADE	7	0

## 5.7 Other polymers [i](#)

There are no such residues in this entry.

## 5.8 Polymer linkage issues

There are no chain breaks in this entry.

## 6 Fit of model and data

### 6.1 Protein, DNA and RNA chains

In the following table, the column labelled ‘#RSRZ > 2’ contains the number (and percentage) of RSRZ outliers, followed by percent RSRZ outliers for the chain as percentile scores relative to all X-ray entries and entries of similar resolution. The OWAB column contains the minimum, median, 95<sup>th</sup> percentile and maximum values of the occupancy-weighted average B-factor per residue. The column labelled ‘Q < 0.9’ lists the number of (and percentage) of residues with an average occupancy less than 0.9.

Mol	Chain	Analysed	<RSRZ>	#RSRZ>2	OWAB(Å <sup>2</sup> )	Q<0.9
1	A	261/261 (100%)	0.39	10 (3%) 40 40	5, 13, 28, 40	0
1	B	261/261 (100%)	0.41	12 (4%) 32 31	4, 13, 31, 49	0
All	All	522/522 (100%)	0.40	22 (4%) 36 35	4, 13, 30, 49	0

All (22) RSRZ outliers are listed below:

Mol	Chain	Res	Type	RSRZ
1	B	97	GLY	7.7
1	A	96	THR	4.5
1	B	111	SER	4.4
1	B	98	THR	4.4
1	B	4	ILE	4.4
1	B	50	ILE	4.3
1	A	110	SER	3.8
1	B	96	THR	3.3
1	B	112	SER	2.7
1	A	264	THR	2.7
1	B	264	THR	2.6
1	B	86	ASN	2.6
1	A	4	ILE	2.4
1	A	109	SER	2.4
1	A	263	THR	2.3
1	A	101	THR	2.3
1	B	47	SER	2.3
1	A	46	ASN	2.2
1	B	52	TYR	2.2
1	B	93	ASN	2.1
1	A	111	SER	2.1
1	A	120	ASN	2.0

## 6.2 Non-standard residues in protein, DNA, RNA chains [i](#)

There are no non-standard protein/DNA/RNA residues in this entry.

## 6.3 Carbohydrates [i](#)

There are no monosaccharides in this entry.

## 6.4 Ligands [i](#)

In the following table, the Atoms column lists the number of modelled atoms in the group and the number defined in the chemical component dictionary. The B-factors column lists the minimum, median, 95<sup>th</sup> percentile and maximum values of B factors of atoms in the group. The column labelled 'Q< 0.9' lists the number of atoms with occupancy less than 0.9.

Mol	Type	Chain	Res	Atoms	RSCC	RSR	B-factors(Å <sup>2</sup> )	Q<0.9
2	NAG	A	265	14/15	0.52	0.37	36,42,48,52	0
2	NAG	B	2	14/15	0.76	0.21	37,42,45,46	0
2	NAG	A	3	14/15	0.84	0.22	28,31,40,40	0
3	ADE	A	501	10/10	0.95	0.13	11,12,13,13	0
3	ADE	B	601	10/10	0.95	0.10	14,14,15,15	0

## 6.5 Other polymers [i](#)

There are no such residues in this entry.