



wwPDB X-ray Structure Validation Summary Report ⓘ

Jun 23, 2024 – 02:01 AM EDT

PDB ID : 5LDS
Title : Structure of the porcine aminopeptidase N ectodomain
Authors : Santiago, C.; Reguera, J.; Mudgal, G.; Casasnovas, J.M.
Deposited on : 2016-06-27
Resolution : 2.00 Å(reported)

This is a wwPDB X-ray Structure Validation Summary Report for a publicly released PDB entry.

We welcome your comments at validation@mail.wwpdb.org

A user guide is available at

<https://www.wwpdb.org/validation/2017/XrayValidationReportHelp>

with specific help available everywhere you see the ⓘ symbol.

The types of validation reports are described at

<http://www.wwpdb.org/validation/2017/FAQs#types>.

The following versions of software and data (see [references ⓘ](#)) were used in the production of this report:

MolProbity : 4.02b-467
Mogul : 1.8.5 (274361), CSD as541be (2020)
Xtriage (Phenix) : 1.13
EDS : 2.37.1
Percentile statistics : 20191225.v01 (using entries in the PDB archive December 25th 2019)
Refmac : 5.8.0158
CCP4 : 7.0.044 (Gargrove)
Ideal geometry (proteins) : Engh & Huber (2001)
Ideal geometry (DNA, RNA) : Parkinson et al. (1996)
Validation Pipeline (wwPDB-VP) : 2.37.1

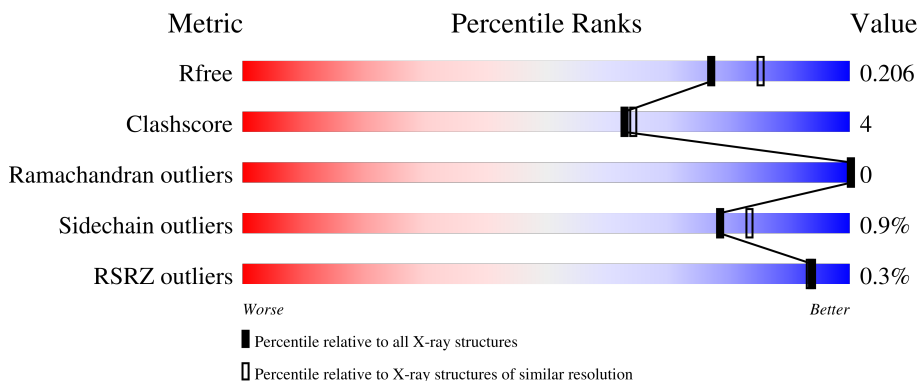
1 Overall quality at a glance

The following experimental techniques were used to determine the structure:

X-RAY DIFFRACTION

The reported resolution of this entry is 2.00 Å.

Percentile scores (ranging between 0-100) for global validation metrics of the entry are shown in the following graphic. The table shows the number of entries on which the scores are based.



Metric	Whole archive (#Entries)	Similar resolution (#Entries, resolution range(Å))
R_{free}	130704	8085 (2.00-2.00)
Clashscore	141614	9178 (2.00-2.00)
Ramachandran outliers	138981	9054 (2.00-2.00)
Sidechain outliers	138945	9053 (2.00-2.00)
RSRZ outliers	127900	7900 (2.00-2.00)

The table below summarises the geometric issues observed across the polymeric chains and their fit to the electron density. The red, orange, yellow and green segments of the lower bar indicate the fraction of residues that contain outliers for ≥ 3 , 2, 1 and 0 types of geometric quality criteria respectively. A grey segment represents the fraction of residues that are not modelled. The numeric value for each fraction is indicated below the corresponding segment, with a dot representing fractions $\leq 5\%$. The upper red bar (where present) indicates the fraction of residues that have poor fit to the electron density. The numeric value is given above the bar.

Mol	Chain	Length	Quality of chain
1	A	945	87% (green), 8% (yellow), 5% (grey)
1	B	945	87% (green), 8% (yellow), 5% (grey)
1	C	945	86% (green), 9% (yellow), 5% (grey)
1	D	945	89% (green), 6% (yellow), 5% (grey)
2	E	6	17% (green), 17% (yellow), 33% (orange), 33% (red)

Continued on next page...

Continued from previous page...

Mol	Chain	Length	Quality of chain
3	F	2	 50% 50%
3	G	2	 50% 50%
3	H	2	 100%
3	I	2	 100%
3	J	2	 50% 50%
3	K	2	 100%
3	L	2	 50% 50%
3	M	2	 100%
3	N	2	 50% 50%
3	P	2	 50% 50%
3	Q	2	 50% 50%
3	R	2	 50% 50%
3	S	2	 100%
4	O	4	 50% 25% 25%

The following table lists non-polymeric compounds, carbohydrate monomers and non-standard residues in protein, DNA, RNA chains that are outliers for geometric or electron-density-fit criteria:

Mol	Type	Chain	Res	Chirality	Geometry	Clashes	Electron density
2	BMA	E	3	X	-	-	-
2	BMA	E	4	X	-	-	-
2	BMA	E	5	X	-	-	-
2	BMA	E	6	X	-	-	-
4	BMA	O	3	X	-	-	-
4	BMA	O	4	X	-	-	-

2 Entry composition [i](#)

There are 8 unique types of molecules in this entry. The entry contains 34579 atoms, of which 0 are hydrogens and 0 are deuteriums.

In the tables below, the ZeroOcc column contains the number of atoms modelled with zero occupancy, the AltConf column contains the number of residues with at least one atom in alternate conformation and the Trace column contains the number of residues modelled with at most 2 atoms.

- Molecule 1 is a protein called Aminopeptidase N.

Mol	Chain	Residues	Atoms					ZeroOcc	AltConf	Trace
			Total	C	N	O	S			
1	A	900	7231	4618	1207	1376	30	0	0	0
1	B	898	7215	4608	1205	1372	30	0	0	0
1	C	899	7223	4612	1206	1375	30	0	0	0
1	D	898	7215	4608	1205	1372	30	0	0	0

There are 76 discrepancies between the modelled and reference sequences:

Chain	Residue	Modelled	Actual	Comment	Reference
A	19	TYR	-	expression tag	UNP P15145
A	20	PRO	-	expression tag	UNP P15145
A	21	TYR	-	expression tag	UNP P15145
A	22	ASP	-	expression tag	UNP P15145
A	23	VAL	-	expression tag	UNP P15145
A	24	PRO	-	expression tag	UNP P15145
A	25	ASP	-	expression tag	UNP P15145
A	26	TYR	-	expression tag	UNP P15145
A	27	ALA	-	expression tag	UNP P15145
A	28	GLY	-	expression tag	UNP P15145
A	29	ALA	-	expression tag	UNP P15145
A	30	GLN	-	expression tag	UNP P15145
A	31	PRO	-	expression tag	UNP P15145
A	32	ALA	-	expression tag	UNP P15145
A	33	ARG	-	expression tag	UNP P15145
A	34	SER	-	expression tag	UNP P15145
A	35	PRO	-	expression tag	UNP P15145
A	107	PHE	LEU	conflict	UNP P15145
A	108	ILE	LEU	conflict	UNP P15145
B	19	TYR	-	expression tag	UNP P15145
B	20	PRO	-	expression tag	UNP P15145

Continued on next page...

Continued from previous page...

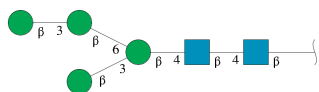
Chain	Residue	Modelled	Actual	Comment	Reference
B	21	TYR	-	expression tag	UNP P15145
B	22	ASP	-	expression tag	UNP P15145
B	23	VAL	-	expression tag	UNP P15145
B	24	PRO	-	expression tag	UNP P15145
B	25	ASP	-	expression tag	UNP P15145
B	26	TYR	-	expression tag	UNP P15145
B	27	ALA	-	expression tag	UNP P15145
B	28	GLY	-	expression tag	UNP P15145
B	29	ALA	-	expression tag	UNP P15145
B	30	GLN	-	expression tag	UNP P15145
B	31	PRO	-	expression tag	UNP P15145
B	32	ALA	-	expression tag	UNP P15145
B	33	ARG	-	expression tag	UNP P15145
B	34	SER	-	expression tag	UNP P15145
B	35	PRO	-	expression tag	UNP P15145
B	107	PHE	LEU	conflict	UNP P15145
B	108	ILE	LEU	conflict	UNP P15145
C	19	TYR	-	expression tag	UNP P15145
C	20	PRO	-	expression tag	UNP P15145
C	21	TYR	-	expression tag	UNP P15145
C	22	ASP	-	expression tag	UNP P15145
C	23	VAL	-	expression tag	UNP P15145
C	24	PRO	-	expression tag	UNP P15145
C	25	ASP	-	expression tag	UNP P15145
C	26	TYR	-	expression tag	UNP P15145
C	27	ALA	-	expression tag	UNP P15145
C	28	GLY	-	expression tag	UNP P15145
C	29	ALA	-	expression tag	UNP P15145
C	30	GLN	-	expression tag	UNP P15145
C	31	PRO	-	expression tag	UNP P15145
C	32	ALA	-	expression tag	UNP P15145
C	33	ARG	-	expression tag	UNP P15145
C	34	SER	-	expression tag	UNP P15145
C	35	PRO	-	expression tag	UNP P15145
C	107	PHE	LEU	conflict	UNP P15145
C	108	ILE	LEU	conflict	UNP P15145
D	19	TYR	-	expression tag	UNP P15145
D	20	PRO	-	expression tag	UNP P15145
D	21	TYR	-	expression tag	UNP P15145
D	22	ASP	-	expression tag	UNP P15145
D	23	VAL	-	expression tag	UNP P15145
D	24	PRO	-	expression tag	UNP P15145

Continued on next page...

Continued from previous page...

Chain	Residue	Modelled	Actual	Comment	Reference
D	25	ASP	-	expression tag	UNP P15145
D	26	TYR	-	expression tag	UNP P15145
D	27	ALA	-	expression tag	UNP P15145
D	28	GLY	-	expression tag	UNP P15145
D	29	ALA	-	expression tag	UNP P15145
D	30	GLN	-	expression tag	UNP P15145
D	31	PRO	-	expression tag	UNP P15145
D	32	ALA	-	expression tag	UNP P15145
D	33	ARG	-	expression tag	UNP P15145
D	34	SER	-	expression tag	UNP P15145
D	35	PRO	-	expression tag	UNP P15145
D	107	PHE	LEU	conflict	UNP P15145
D	108	ILE	LEU	conflict	UNP P15145

- Molecule 2 is an oligosaccharide called beta-D-mannopyranose-(1-3)-beta-D-mannopyranose-(1-6)-[beta-D-mannopyranose-(1-3)]beta-D-mannopyranose-(1-4)-2-acetamido-2-deoxy-beta-D-glucopyranose-(1-4)-2-acetamido-2-deoxy-beta-D-glucopyranose.



Mol	Chain	Residues	Atoms				ZeroOcc	AltConf	Trace
			Total	C	N	O			
2	E	6	72	40	2	30	0	0	0

- Molecule 3 is an oligosaccharide called 2-acetamido-2-deoxy-beta-D-glucopyranose-(1-4)-2-acetamido-2-deoxy-beta-D-glucopyranose.



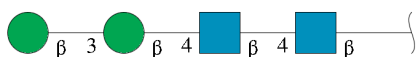
Mol	Chain	Residues	Atoms				ZeroOcc	AltConf	Trace
			Total	C	N	O			
3	F	2	28	16	2	10	0	0	0
3	G	2	28	16	2	10	0	0	0
3	H	2	28	16	2	10	0	0	0
3	I	2	28	16	2	10	0	0	0

Continued on next page...

Continued from previous page...

Mol	Chain	Residues	Atoms				ZeroOcc	AltConf	Trace
			Total	C	N	O			
3	J	2	Total 28	C 16	N 2	O 10	0	0	0
3	K	2	Total 28	C 16	N 2	O 10	0	0	0
3	L	2	Total 28	C 16	N 2	O 10	0	0	0
3	M	2	Total 28	C 16	N 2	O 10	0	0	0
3	N	2	Total 28	C 16	N 2	O 10	0	0	0
3	P	2	Total 28	C 16	N 2	O 10	0	0	0
3	Q	2	Total 28	C 16	N 2	O 10	0	0	0
3	R	2	Total 28	C 16	N 2	O 10	0	0	0
3	S	2	Total 28	C 16	N 2	O 10	0	0	0

- Molecule 4 is an oligosaccharide called beta-D-mannopyranose-(1-3)-beta-D-mannopyranose-(1-4)-2-acetamido-2-deoxy-beta-D-glucopyranose-(1-4)-2-acetamido-2-deoxy-beta-D-glucopyranose.

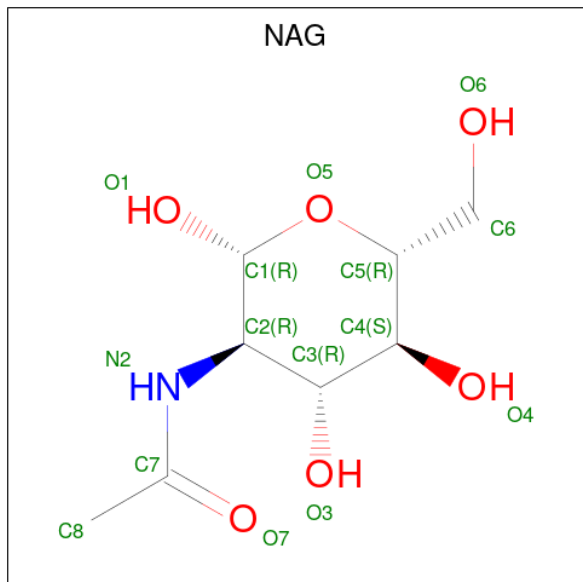


Mol	Chain	Residues	Atoms				ZeroOcc	AltConf	Trace
			Total	C	N	O			
4	O	4	Total 50	C 28	N 2	O 20	0	0	0

- Molecule 5 is ZINC ION (three-letter code: ZN) (formula: Zn).

Mol	Chain	Residues	Atoms		ZeroOcc	AltConf
5	A	1	Total 1	Zn 1	0	0
5	B	1	Total 1	Zn 1	0	0
5	C	1	Total 1	Zn 1	0	0
5	D	1	Total 1	Zn 1	0	0

- Molecule 6 is 2-acetamido-2-deoxy-beta-D-glucopyranose (three-letter code: NAG) (formula: $C_8H_{15}NO_6$).



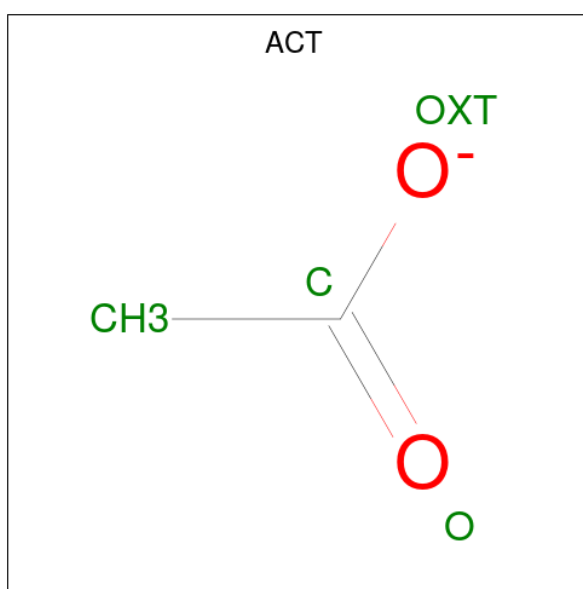
Mol	Chain	Residues	Atoms				ZeroOcc	AltConf
6	A	1	Total	C	N	O	0	0
			14	8	1	5		
6	A	1	Total	C	N	O	0	0
			14	8	1	5		
6	A	1	Total	C	N	O	0	0
			14	8	1	5		
6	B	1	Total	C	N	O	0	0
			14	8	1	5		
6	B	1	Total	C	N	O	0	0
			14	8	1	5		
6	B	1	Total	C	N	O	0	0
			14	8	1	5		
6	B	1	Total	C	N	O	0	0
			14	8	1	5		
6	C	1	Total	C	N	O	0	0
			14	8	1	5		
6	C	1	Total	C	N	O	0	0
			14	8	1	5		
6	C	1	Total	C	N	O	0	0
			14	8	1	5		
6	C	1	Total	C	N	O	0	0
			14	8	1	5		

Continued on next page...

Continued from previous page...

Mol	Chain	Residues	Atoms				ZeroOcc	AltConf
6	D	1	Total	C	N	O	0	0
			14	8	1	5		
6	D	1	Total	C	N	O	0	0
			14	8	1	5		
6	D	1	Total	C	N	O	0	0
			14	8	1	5		
6	D	1	Total	C	N	O	0	0
			14	8	1	5		

- Molecule 7 is ACETATE ION (three-letter code: ACT) (formula: C₂H₃O₂).



Mol	Chain	Residues	Atoms		ZeroOcc	AltConf
7	A	1	Total	C O	0	0
			4	2 2		
7	B	1	Total	C O	0	0
			4	2 2		
7	C	1	Total	C O	0	0
			4	2 2		
7	D	1	Total	C O	0	0
			4	2 2		

- Molecule 8 is water.

Mol	Chain	Residues	Atoms		ZeroOcc	AltConf
8	A	1371	Total	O	0	0
			1371	1371		

Continued on next page...

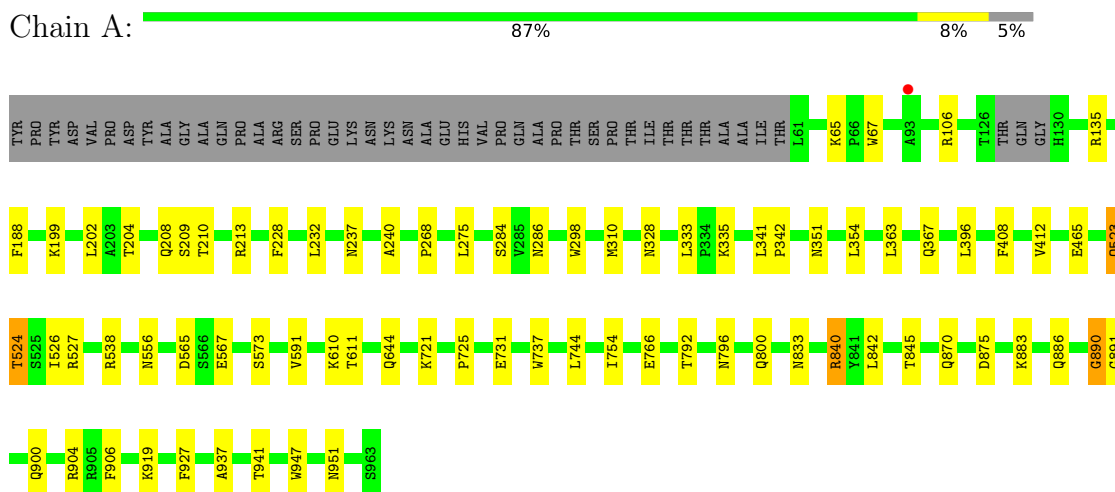
Continued from previous page...

Mol	Chain	Residues	Atoms		ZeroOcc	AltConf
8	B	1123	Total 1123	O 1123	0	0
8	C	1155	Total 1155	O 1155	0	0
8	D	1316	Total 1316	O 1316	0	0

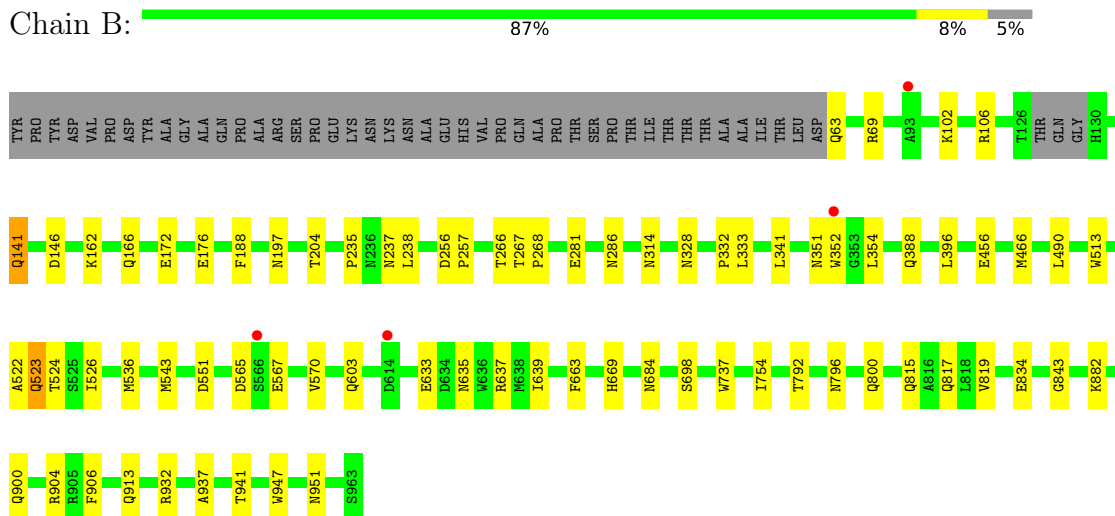
3 Residue-property plots [i](#)

These plots are drawn for all protein, RNA, DNA and oligosaccharide chains in the entry. The first graphic for a chain summarises the proportions of the various outlier classes displayed in the second graphic. The second graphic shows the sequence view annotated by issues in geometry and electron density. Residues are color-coded according to the number of geometric quality criteria for which they contain at least one outlier: green = 0, yellow = 1, orange = 2 and red = 3 or more. A red dot above a residue indicates a poor fit to the electron density ($RSRZ > 2$). Stretches of 2 or more consecutive residues without any outlier are shown as a green connector. Residues present in the sample, but not in the model, are shown in grey.

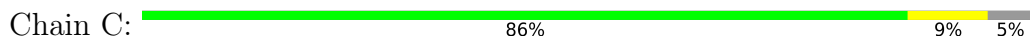
- Molecule 1: Aminopeptidase N

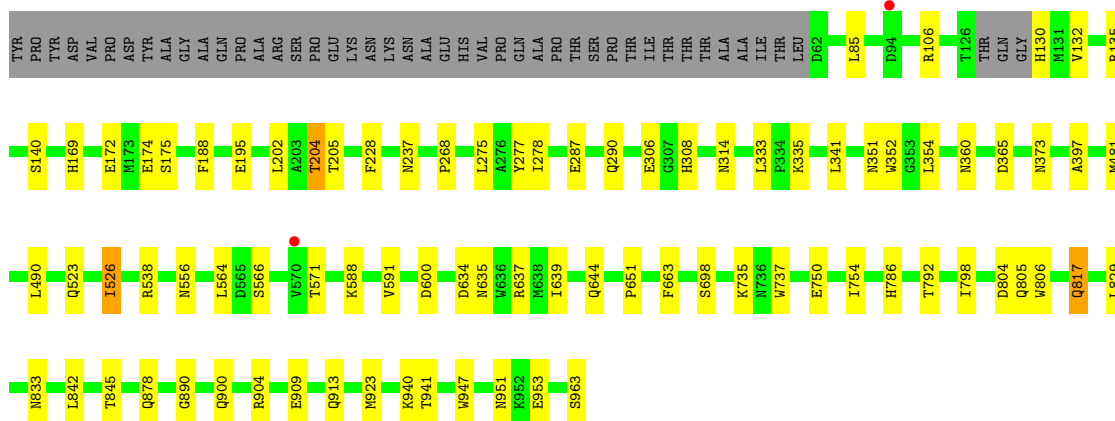


- Molecule 1: Aminopeptidase N



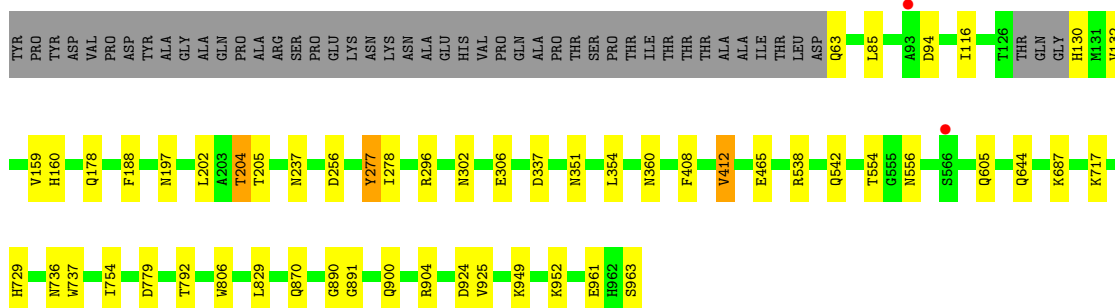
- Molecule 1: Aminopeptidase N





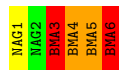
- Molecule 1: Aminopeptidase N

Chain D: 89% 6% 5%



- Molecule 2: beta-D-mannopyranose-(1-3)-beta-D-mannopyranose-(1-6)-[beta-D-mannopyranose-(1-3)]beta-D-mannopyranose-(1-4)-2-acetamido-2-deoxy-beta-D-glucopyranose-(1-4)-2-acetamido-2-deoxy-beta-D-glucopyranose

Chain E: 17% 17% 33% 33%



- Molecule 3: 2-acetamido-2-deoxy-beta-D-glucopyranose-(1-4)-2-acetamido-2-deoxy-beta-D-glucopyranose

Chain F: 50% 50%



- Molecule 3: 2-acetamido-2-deoxy-beta-D-glucopyranose-(1-4)-2-acetamido-2-deoxy-beta-D-glucopyranose

Chain G: 50% 50%

MAG1
MAG2

- Molecule 3: 2-acetamido-2-deoxy-beta-D-glucopyranose-(1-4)-2-acetamido-2-deoxy-beta-D-glucopyranose

Chain H:  100%

MAG1
MAG2

- Molecule 3: 2-acetamido-2-deoxy-beta-D-glucopyranose-(1-4)-2-acetamido-2-deoxy-beta-D-glucopyranose

Chain I:  100%

MAG1
MAG2

- Molecule 3: 2-acetamido-2-deoxy-beta-D-glucopyranose-(1-4)-2-acetamido-2-deoxy-beta-D-glucopyranose

Chain J:  50% 50%


MAG1
MAG2

- Molecule 3: 2-acetamido-2-deoxy-beta-D-glucopyranose-(1-4)-2-acetamido-2-deoxy-beta-D-glucopyranose

Chain K:  100%

MAG1
MAG2

- Molecule 3: 2-acetamido-2-deoxy-beta-D-glucopyranose-(1-4)-2-acetamido-2-deoxy-beta-D-glucopyranose

Chain L:  50% 50%

MAG1
MAG2

- Molecule 3: 2-acetamido-2-deoxy-beta-D-glucopyranose-(1-4)-2-acetamido-2-deoxy-beta-D-glucopyranose

Chain M: 100%

MAG1
MAG2

- Molecule 3: 2-acetamido-2-deoxy-beta-D-glucopyranose-(1-4)-2-acetamido-2-deoxy-beta-D-glucopyranose

Chain N:  50% 50%


MAG1
MAG2

- Molecule 3: 2-acetamido-2-deoxy-beta-D-glucopyranose-(1-4)-2-acetamido-2-deoxy-beta-D-glucopyranose

Chain P:  50% 50%


MAG1
MAG2

- Molecule 3: 2-acetamido-2-deoxy-beta-D-glucopyranose-(1-4)-2-acetamido-2-deoxy-beta-D-glucopyranose

Chain Q:  50% 50%


MAG1
MAG2

- Molecule 3: 2-acetamido-2-deoxy-beta-D-glucopyranose-(1-4)-2-acetamido-2-deoxy-beta-D-glucopyranose

Chain R:  50% 50%


MAG1
MAG2

- Molecule 3: 2-acetamido-2-deoxy-beta-D-glucopyranose-(1-4)-2-acetamido-2-deoxy-beta-D-glucopyranose

Chain S:  100%


MAG1
MAG2

- Molecule 4: beta-D-mannopyranose-(1-3)-beta-D-mannopyranose-(1-4)-2-acetamido-2-deoxy-beta-D-glucopyranose-(1-4)-2-acetamido-2-deoxy-beta-D-glucopyranose

Chain O:  50% 25% 25%


MAG1
MAG2
BMK3
BMK4

4 Data and refinement statistics

Property	Value	Source
Space group	P 1	Depositor
Cell constants a, b, c, α , β , γ	78.67Å 78.77Å 223.87Å 99.66° 92.62° 111.33°	Depositor
Resolution (Å)	24.96 – 2.00 24.96 – 2.00	Depositor EDS
% Data completeness (in resolution range)	97.5 (24.96-2.00) 97.4 (24.96-2.00)	Depositor EDS
R_{merge}	0.09	Depositor
R_{sym}	(Not available)	Depositor
$\langle I/\sigma(I) \rangle$ ¹	3.07 (at 1.99Å)	Xtrriage
Refinement program	PHENIX 1.8.4_1496	Depositor
R, R_{free}	0.169 , 0.206 0.171 , 0.206	Depositor DCC
R_{free} test set	16202 reflections (5.02%)	wwPDB-VP
Wilson B-factor (Å ²)	12.4	Xtrriage
Anisotropy	0.158	Xtrriage
Bulk solvent k_{sol} (e/Å ³), B_{sol} (Å ²)	0.30 , 31.4	EDS
L-test for twinning ²	$\langle L \rangle = 0.42$, $\langle L^2 \rangle = 0.24$	Xtrriage
Estimated twinning fraction	0.119 for k,h,-h-k-l	Xtrriage
F_o, F_c correlation	0.93	EDS
Total number of atoms	34579	wwPDB-VP
Average B, all atoms (Å ²)	17.0	wwPDB-VP

Xtrriage's analysis on translational NCS is as follows: *The largest off-origin peak in the Patterson function is 2.81% of the height of the origin peak. No significant pseudotranslation is detected.*

¹Intensities estimated from amplitudes.

²Theoretical values of $\langle |L| \rangle$, $\langle L^2 \rangle$ for acentric reflections are 0.5, 0.333 respectively for untwinned datasets, and 0.375, 0.2 for perfectly twinned datasets.

5 Model quality [i](#)

5.1 Standard geometry [i](#)

Bond lengths and bond angles in the following residue types are not validated in this section: BMA, NAG, ZN, ACT

The Z score for a bond length (or angle) is the number of standard deviations the observed value is removed from the expected value. A bond length (or angle) with $|Z| > 5$ is considered an outlier worth inspection. RMSZ is the root-mean-square of all Z scores of the bond lengths (or angles).

Mol	Chain	Bond lengths		Bond angles	
		RMSZ	# Z >5	RMSZ	# Z >5
1	A	0.30	0/7418	0.48	1/10108 (0.0%)
1	B	0.30	0/7402	0.47	0/10086
1	C	0.28	0/7410	0.45	0/10097
1	D	0.29	0/7402	0.46	0/10086
All	All	0.29	0/29632	0.46	1/40377 (0.0%)

Chiral center outliers are detected by calculating the chiral volume of a chiral center and verifying if the center is modelled as a planar moiety or with the opposite hand. A planarity outlier is detected by checking planarity of atoms in a peptide group, atoms in a mainchain group or atoms of a sidechain that are expected to be planar.

Mol	Chain	#Chirality outliers	#Planarity outliers
1	B	0	1

There are no bond length outliers.

All (1) bond angle outliers are listed below:

Mol	Chain	Res	Type	Atoms	Z	Observed($^{\circ}$)	Ideal($^{\circ}$)
1	A	890	GLY	N-CA-C	6.26	128.75	113.10

There are no chirality outliers.

All (1) planarity outliers are listed below:

Mol	Chain	Res	Type	Group
1	B	522	ALA	Peptide

5.2 Too-close contacts

In the following table, the Non-H and H(model) columns list the number of non-hydrogen atoms and hydrogen atoms in the chain respectively. The H(added) column lists the number of hydrogen atoms added and optimized by MolProbity. The Clashes column lists the number of clashes within the asymmetric unit, whereas Symm-Clashes lists symmetry-related clashes.

Mol	Chain	Non-H	H(model)	H(added)	Clashes	Symm-Clashes
1	A	7231	0	6989	62	0
1	B	7215	0	6974	69	0
1	C	7223	0	6979	64	0
1	D	7215	0	6971	41	0
2	E	72	0	61	2	0
3	F	28	0	25	3	0
3	G	28	0	25	1	0
3	H	28	0	25	0	0
3	I	28	0	25	3	0
3	J	28	0	25	1	0
3	K	28	0	25	0	0
3	L	28	0	25	2	0
3	M	28	0	25	0	0
3	N	28	0	25	1	0
3	P	28	0	25	2	0
3	Q	28	0	25	1	0
3	R	28	0	25	0	0
3	S	28	0	25	0	0
4	O	50	0	43	0	0
5	A	1	0	0	0	0
5	B	1	0	0	0	0
5	C	1	0	0	0	0
5	D	1	0	0	0	0
6	A	42	0	39	2	0
6	B	56	0	52	3	0
6	C	70	0	65	6	0
6	D	56	0	52	3	0
7	A	4	0	3	0	0
7	B	4	0	3	0	0
7	C	4	0	3	0	0
7	D	4	0	3	0	0
8	A	1371	0	0	31	2
8	B	1123	0	0	26	4
8	C	1155	0	0	36	3
8	D	1316	0	0	21	2
All	All	34579	0	28562	252	7

The all-atom clashscore is defined as the number of clashes found per 1000 atoms (including hydrogen atoms). The all-atom clashscore for this structure is 4.

The worst 5 of 252 close contacts within the same asymmetric unit are listed below, sorted by their clash magnitude.

Atom-1	Atom-2	Interatomic distance (Å)	Clash overlap (Å)
1:C:817:GLN:HE21	1:C:817:GLN:HA	1.17	1.04
1:D:197:ASN:ND2	8:D:1102:HOH:O	1.92	1.00
6:C:1009:NAG:O3	8:C:1101:HOH:O	1.85	0.94
1:D:130:HIS:N	8:D:1105:HOH:O	2.05	0.90
1:C:947:TRP:O	1:C:951:ASN:ND2	2.07	0.88

The worst 5 of 7 symmetry-related close contacts are listed below. The label for Atom-2 includes the symmetry operator and encoded unit-cell translations to be applied.

Atom-1	Atom-2	Interatomic distance (Å)	Clash overlap (Å)
8:D:1293:HOH:O	8:D:2129:HOH:O[1_455]	1.91	0.29
8:A:1633:HOH:O	8:D:2203:HOH:O[1_655]	1.95	0.25
8:A:2143:HOH:O	8:A:2150:HOH:O[1_545]	2.03	0.17
8:B:1618:HOH:O	8:C:1897:HOH:O[1_544]	2.03	0.17
8:B:1652:HOH:O	8:C:1964:HOH:O[1_454]	2.12	0.08

5.3 Torsion angles [i](#)

5.3.1 Protein backbone [i](#)

In the following table, the Percentiles column shows the percent Ramachandran outliers of the chain as a percentile score with respect to all X-ray entries followed by that with respect to entries of similar resolution.

The Analysed column shows the number of residues for which the backbone conformation was analysed, and the total number of residues.

Mol	Chain	Analysed	Favoured	Allowed	Outliers	Percentiles	
1	A	896/945 (95%)	867 (97%)	29 (3%)	0	100	100
1	B	894/945 (95%)	864 (97%)	30 (3%)	0	100	100
1	C	895/945 (95%)	862 (96%)	33 (4%)	0	100	100
1	D	894/945 (95%)	864 (97%)	30 (3%)	0	100	100
All	All	3579/3780 (95%)	3457 (97%)	122 (3%)	0	100	100

There are no Ramachandran outliers to report.

5.3.2 Protein sidechains [i](#)

In the following table, the Percentiles column shows the percent sidechain outliers of the chain as a percentile score with respect to all X-ray entries followed by that with respect to entries of similar resolution.

The Analysed column shows the number of residues for which the sidechain conformation was analysed, and the total number of residues.

Mol	Chain	Analysed	Rotameric	Outliers	Percentiles	
1	A	796/832 (96%)	788 (99%)	8 (1%)	76	81
1	B	794/832 (95%)	790 (100%)	4 (0%)	88	92
1	C	795/832 (96%)	785 (99%)	10 (1%)	69	74
1	D	794/832 (95%)	788 (99%)	6 (1%)	81	86
All	All	3179/3328 (96%)	3151 (99%)	28 (1%)	78	83

5 of 28 residues with a non-rotameric sidechain are listed below:

Mol	Chain	Res	Type
1	C	204	THR
1	D	412	VAL
1	C	526	ILE
1	D	202	LEU
1	C	352	TRP

Sometimes sidechains can be flipped to improve hydrogen bonding and reduce clashes. 5 of 12 such sidechains are listed below:

Mol	Chain	Res	Type
1	C	308	HIS
1	C	817	GLN
1	D	556	ASN
1	C	878	GLN
1	A	523	GLN

5.3.3 RNA [i](#)

There are no RNA molecules in this entry.

5.4 Non-standard residues in protein, DNA, RNA chains [i](#)

There are no non-standard protein/DNA/RNA residues in this entry.

5.5 Carbohydrates [i](#)

36 monosaccharides are modelled in this entry.

In the following table, the Counts columns list the number of bonds (or angles) for which Mogul statistics could be retrieved, the number of bonds (or angles) that are observed in the model and the number of bonds (or angles) that are defined in the Chemical Component Dictionary. The Link column lists molecule types, if any, to which the group is linked. The Z score for a bond length (or angle) is the number of standard deviations the observed value is removed from the expected value. A bond length (or angle) with $|Z| > 2$ is considered an outlier worth inspection. RMSZ is the root-mean-square of all Z scores of the bond lengths (or angles).

Mol	Type	Chain	Res	Link	Bond lengths			Bond angles		
					Counts	RMSZ	# Z > 2	Counts	RMSZ	# Z > 2
2	NAG	E	1	2,1	14,14,15	0.52	0	17,19,21	0.67	0
2	NAG	E	2	2	14,14,15	0.53	0	17,19,21	0.60	0
2	BMA	E	3	2	11,11,12	1.79	3 (27%)	15,15,17	2.10	4 (26%)
2	BMA	E	4	2	11,11,12	1.47	2 (18%)	15,15,17	1.14	1 (6%)
2	BMA	E	5	2	11,11,12	1.50	2 (18%)	15,15,17	1.08	1 (6%)
2	BMA	E	6	2	11,11,12	1.46	2 (18%)	15,15,17	1.28	1 (6%)
3	NAG	F	1	3,1	14,14,15	0.56	0	17,19,21	0.73	1 (5%)
3	NAG	F	2	3	14,14,15	0.55	0	17,19,21	0.72	0
3	NAG	G	1	3,1	14,14,15	0.49	0	17,19,21	0.70	0
3	NAG	G	2	3	14,14,15	0.56	0	17,19,21	0.66	0
3	NAG	H	1	3,1	14,14,15	0.50	0	17,19,21	1.05	1 (5%)
3	NAG	H	2	3	14,14,15	0.49	0	17,19,21	0.95	1 (5%)
3	NAG	I	1	3,1	14,14,15	0.55	0	17,19,21	0.74	0
3	NAG	I	2	3	14,14,15	0.59	0	17,19,21	0.86	1 (5%)
3	NAG	J	1	3,1	14,14,15	0.56	0	17,19,21	0.69	0
3	NAG	J	2	3	14,14,15	0.58	0	17,19,21	0.62	0
3	NAG	K	1	3,1	14,14,15	0.58	0	17,19,21	0.83	0
3	NAG	K	2	3	14,14,15	0.52	0	17,19,21	0.73	0
3	NAG	L	1	3,1	14,14,15	0.50	0	17,19,21	0.73	1 (5%)
3	NAG	L	2	3	14,14,15	0.52	0	17,19,21	0.80	0
3	NAG	M	1	3,1	14,14,15	0.56	0	17,19,21	0.73	0
3	NAG	M	2	3	14,14,15	0.49	0	17,19,21	0.67	0
3	NAG	N	1	3,1	14,14,15	0.58	0	17,19,21	0.61	0
3	NAG	N	2	3	14,14,15	0.59	0	17,19,21	0.86	0
4	NAG	O	1	4,1	14,14,15	0.61	0	17,19,21	0.83	0

Mol	Type	Chain	Res	Link	Bond lengths			Bond angles		
					Counts	RMSZ	# Z > 2	Counts	RMSZ	# Z > 2
4	NAG	O	2	4	14,14,15	0.57	0	17,19,21	0.69	0
4	BMA	O	3	4	11,11,12	1.68	3 (27%)	15,15,17	1.22	1 (6%)
4	BMA	O	4	4	11,11,12	1.52	2 (18%)	15,15,17	1.47	4 (26%)
3	NAG	P	1	3,1	14,14,15	0.60	0	17,19,21	0.59	0
3	NAG	P	2	3	14,14,15	0.50	0	17,19,21	0.71	0
3	NAG	Q	1	3,1	14,14,15	0.51	0	17,19,21	0.59	0
3	NAG	Q	2	3	14,14,15	0.54	0	17,19,21	0.59	0
3	NAG	R	1	3,1	14,14,15	0.51	0	17,19,21	0.88	1 (5%)
3	NAG	R	2	3	14,14,15	0.53	0	17,19,21	0.69	0
3	NAG	S	1	3,1	14,14,15	0.50	0	17,19,21	0.89	1 (5%)
3	NAG	S	2	3	14,14,15	0.50	0	17,19,21	0.87	1 (5%)

In the following table, the Chirals column lists the number of chiral outliers, the number of chiral centers analysed, the number of these observed in the model and the number defined in the Chemical Component Dictionary. Similar counts are reported in the Torsion and Rings columns. '-' means no outliers of that kind were identified.

Mol	Type	Chain	Res	Link	Chirals	Torsions	Rings
2	NAG	E	1	2,1	-	0/6/23/26	0/1/1/1
2	NAG	E	2	2	-	0/6/23/26	0/1/1/1
2	BMA	E	3	2	2/2/4/5	0/2/19/22	0/1/1/1
2	BMA	E	4	2	3/3/4/5	2/2/19/22	0/1/1/1
2	BMA	E	5	2	3/3/4/5	1/2/19/22	0/1/1/1
2	BMA	E	6	2	3/3/4/5	2/2/19/22	0/1/1/1
3	NAG	F	1	3,1	-	2/6/23/26	0/1/1/1
3	NAG	F	2	3	-	2/6/23/26	0/1/1/1
3	NAG	G	1	3,1	-	2/6/23/26	0/1/1/1
3	NAG	G	2	3	-	2/6/23/26	0/1/1/1
3	NAG	H	1	3,1	-	0/6/23/26	0/1/1/1
3	NAG	H	2	3	-	0/6/23/26	0/1/1/1
3	NAG	I	1	3,1	-	2/6/23/26	0/1/1/1
3	NAG	I	2	3	-	2/6/23/26	0/1/1/1
3	NAG	J	1	3,1	-	2/6/23/26	0/1/1/1
3	NAG	J	2	3	-	2/6/23/26	0/1/1/1
3	NAG	K	1	3,1	-	0/6/23/26	0/1/1/1
3	NAG	K	2	3	-	0/6/23/26	0/1/1/1
3	NAG	L	1	3,1	-	2/6/23/26	0/1/1/1
3	NAG	L	2	3	-	2/6/23/26	0/1/1/1

Continued on next page...

Continued from previous page...

Mol	Type	Chain	Res	Link	Chirals	Torsions	Rings
3	NAG	M	1	3,1	-	0/6/23/26	0/1/1/1
3	NAG	M	2	3	-	0/6/23/26	0/1/1/1
3	NAG	N	1	3,1	-	2/6/23/26	0/1/1/1
3	NAG	N	2	3	-	2/6/23/26	0/1/1/1
4	NAG	O	1	4,1	-	2/6/23/26	0/1/1/1
4	NAG	O	2	4	-	0/6/23/26	0/1/1/1
4	BMA	O	3	4	1/1/4/5	0/2/19/22	0/1/1/1
4	BMA	O	4	4	3/3/4/5	0/2/19/22	0/1/1/1
3	NAG	P	1	3,1	-	4/6/23/26	0/1/1/1
3	NAG	P	2	3	-	2/6/23/26	0/1/1/1
3	NAG	Q	1	3,1	-	2/6/23/26	0/1/1/1
3	NAG	Q	2	3	-	2/6/23/26	0/1/1/1
3	NAG	R	1	3,1	-	0/6/23/26	0/1/1/1
3	NAG	R	2	3	-	0/6/23/26	0/1/1/1
3	NAG	S	1	3,1	-	0/6/23/26	0/1/1/1
3	NAG	S	2	3	-	0/6/23/26	0/1/1/1

The worst 5 of 14 bond length outliers are listed below:

Mol	Chain	Res	Type	Atoms	Z	Observed(Å)	Ideal(Å)
4	O	3	BMA	C2-C3	-3.45	1.47	1.52
2	E	3	BMA	C2-C3	-3.33	1.47	1.52
2	E	3	BMA	O5-C1	3.30	1.49	1.43
4	O	4	BMA	C2-C3	-3.12	1.47	1.52
4	O	3	BMA	O5-C1	2.98	1.48	1.43

The worst 5 of 20 bond angle outliers are listed below:

Mol	Chain	Res	Type	Atoms	Z	Observed(°)	Ideal(°)
2	E	3	BMA	C1-O5-C5	5.55	119.71	112.19
2	E	3	BMA	C2-C3-C4	-3.41	104.99	110.89
3	H	1	NAG	C1-O5-C5	3.16	116.47	112.19
4	O	3	BMA	C1-O5-C5	3.08	116.37	112.19
4	O	4	BMA	C1-C2-C3	3.04	113.41	109.67

5 of 15 chirality outliers are listed below:

Mol	Chain	Res	Type	Atom
2	E	3	BMA	C1
2	E	3	BMA	C2

Continued on next page...

Continued from previous page...

Mol	Chain	Res	Type	Atom
2	E	4	BMA	C4
2	E	4	BMA	C1
2	E	4	BMA	C3

5 of 41 torsion outliers are listed below:

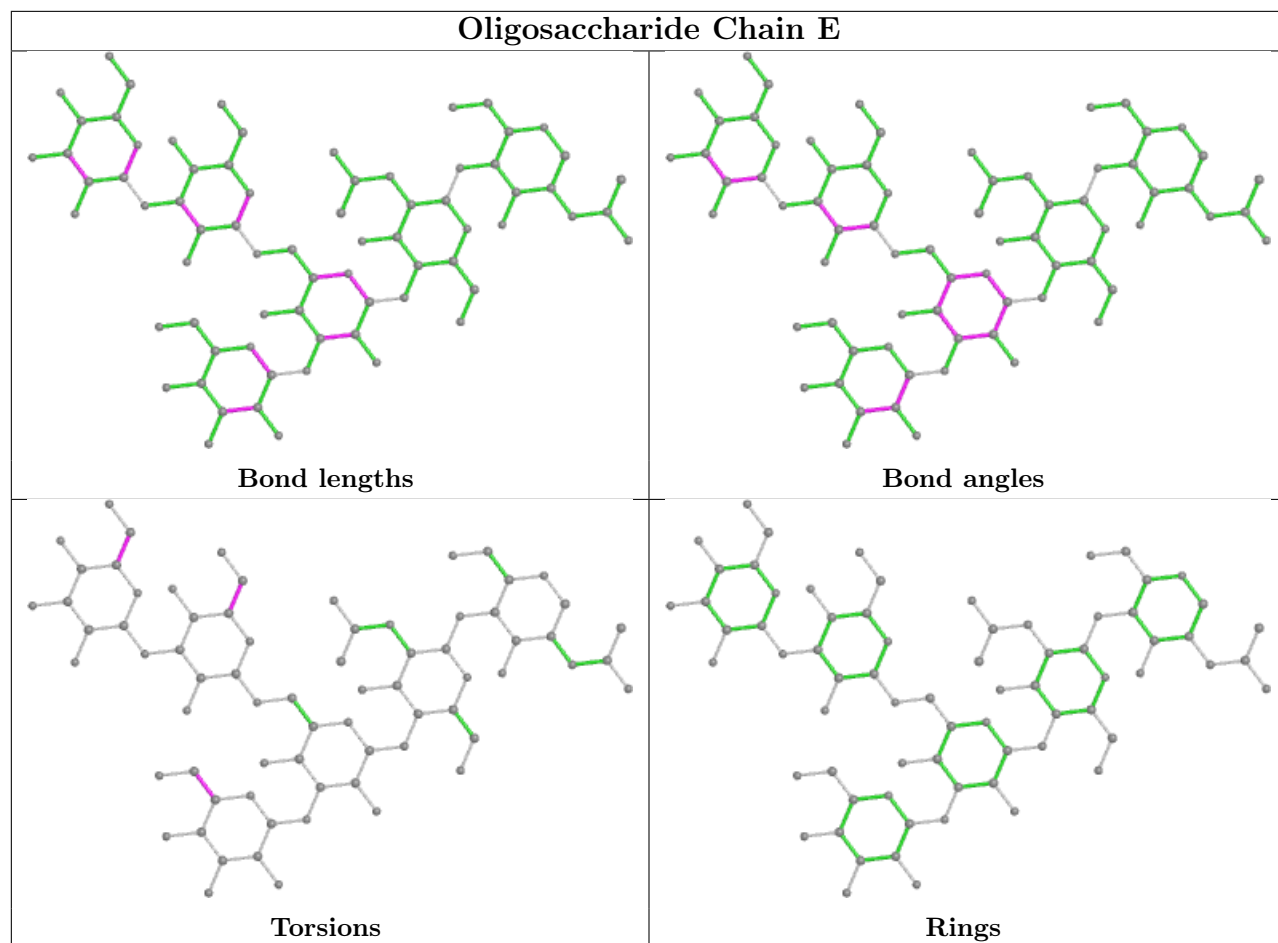
Mol	Chain	Res	Type	Atoms
4	O	1	NAG	O5-C5-C6-O6
2	E	6	BMA	C4-C5-C6-O6
3	F	1	NAG	C8-C7-N2-C2
3	F	1	NAG	O7-C7-N2-C2
3	F	2	NAG	C8-C7-N2-C2

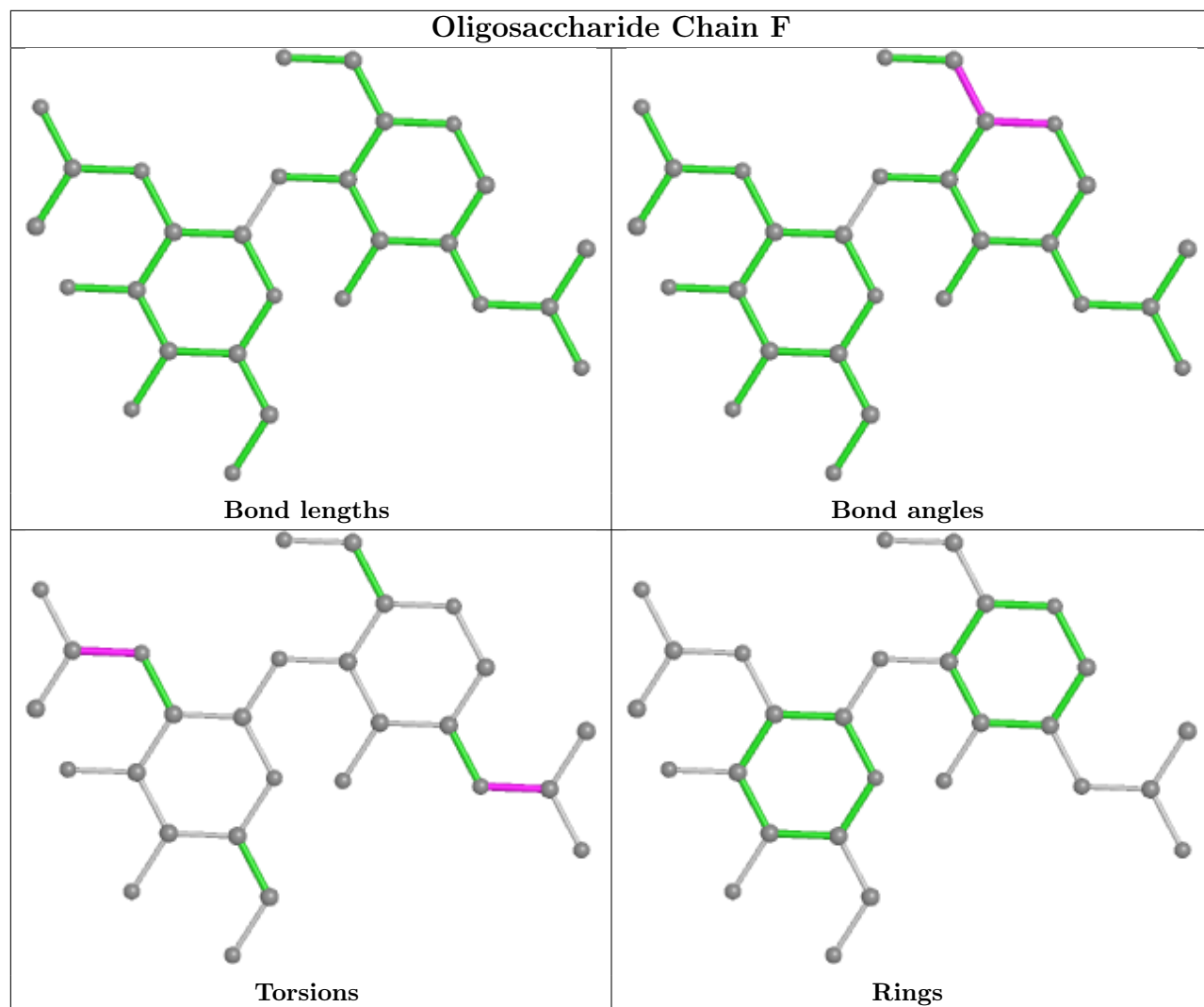
There are no ring outliers.

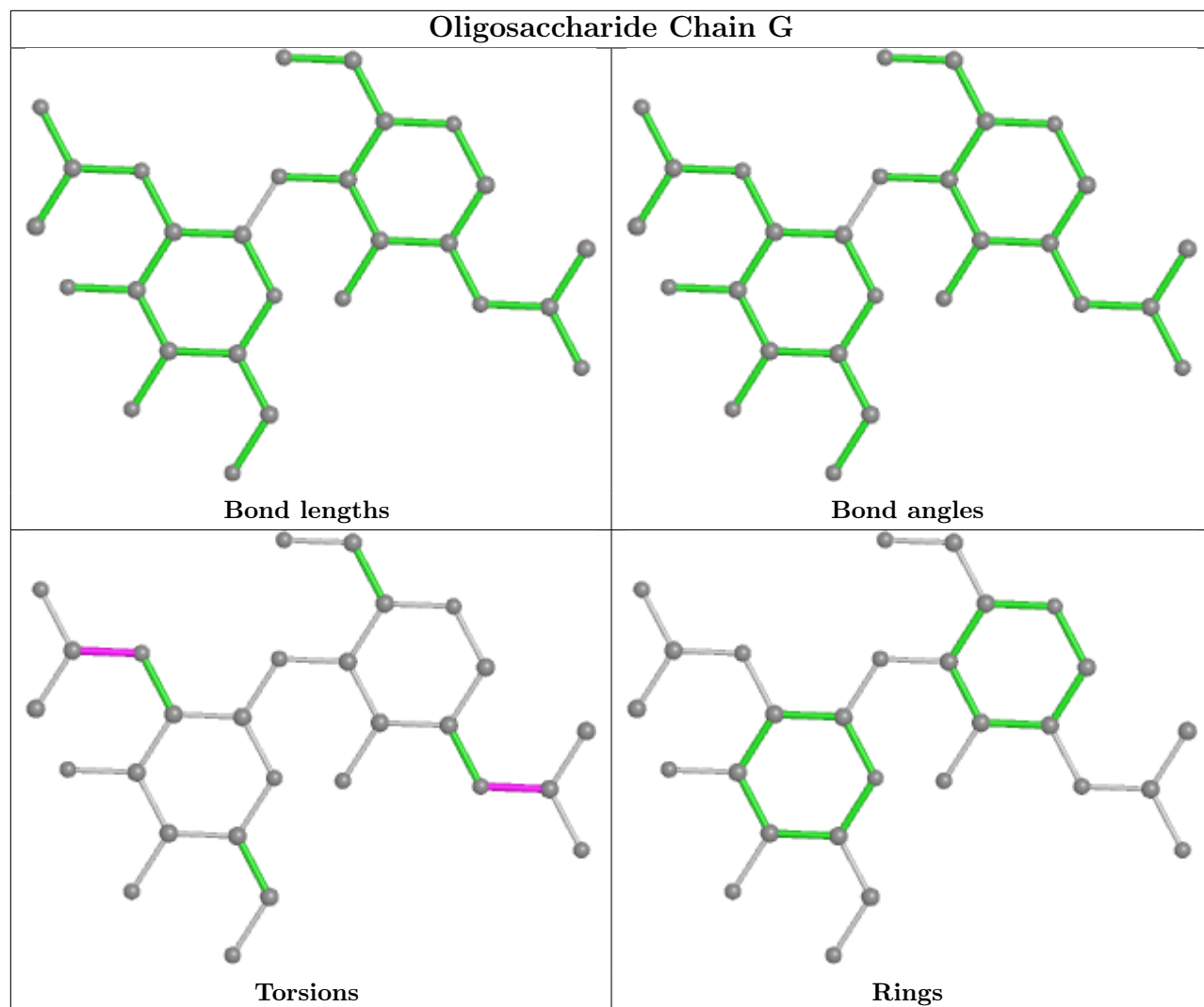
12 monomers are involved in 16 short contacts:

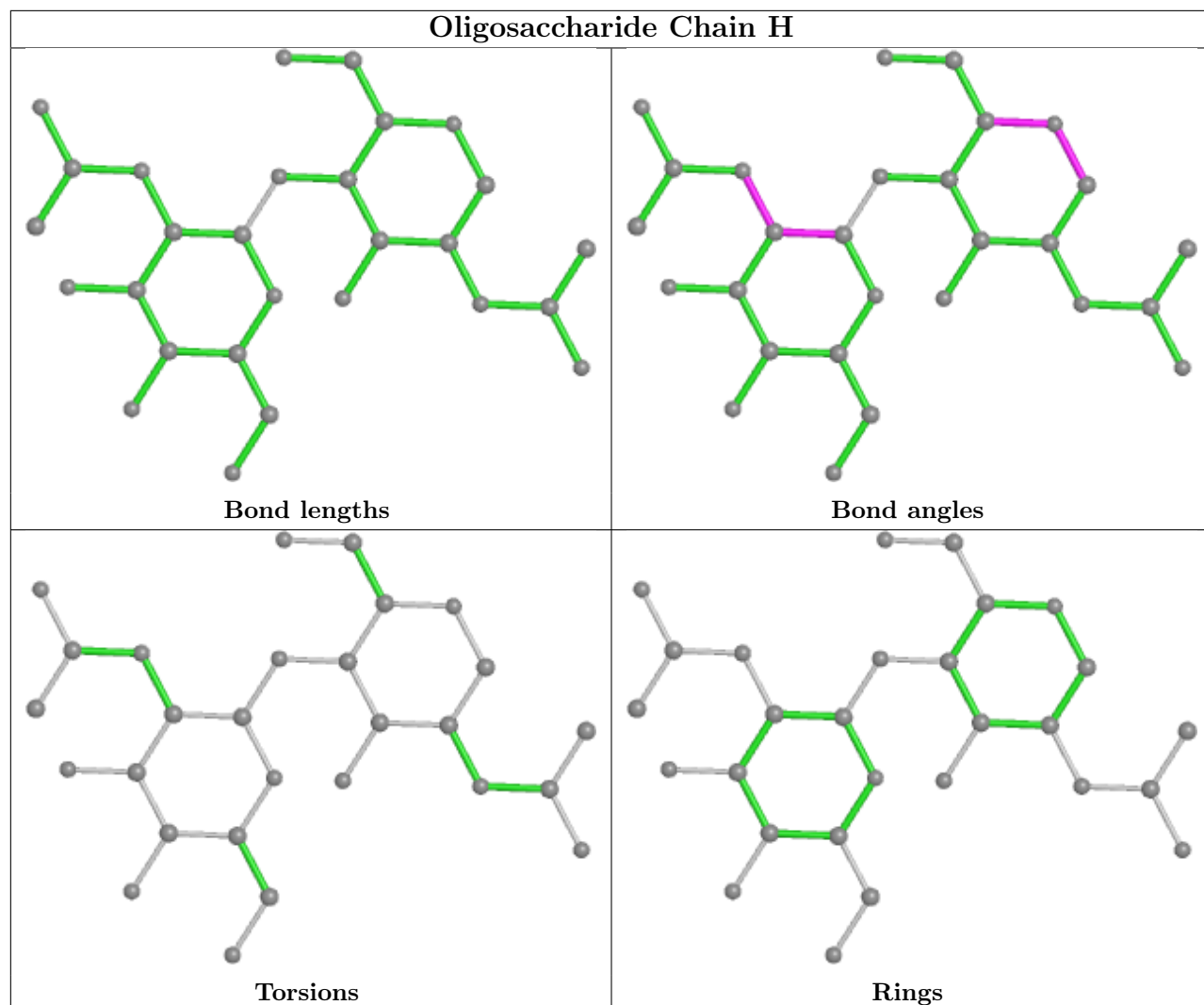
Mol	Chain	Res	Type	Clashes	Symm-Clashes
3	N	1	NAG	1	0
2	E	6	BMA	1	0
3	J	1	NAG	1	0
3	P	1	NAG	2	0
3	I	1	NAG	3	0
3	G	1	NAG	1	0
3	L	2	NAG	1	0
3	Q	1	NAG	1	0
3	F	1	NAG	3	0
3	L	1	NAG	1	0
2	E	3	BMA	1	0
2	E	1	NAG	1	0

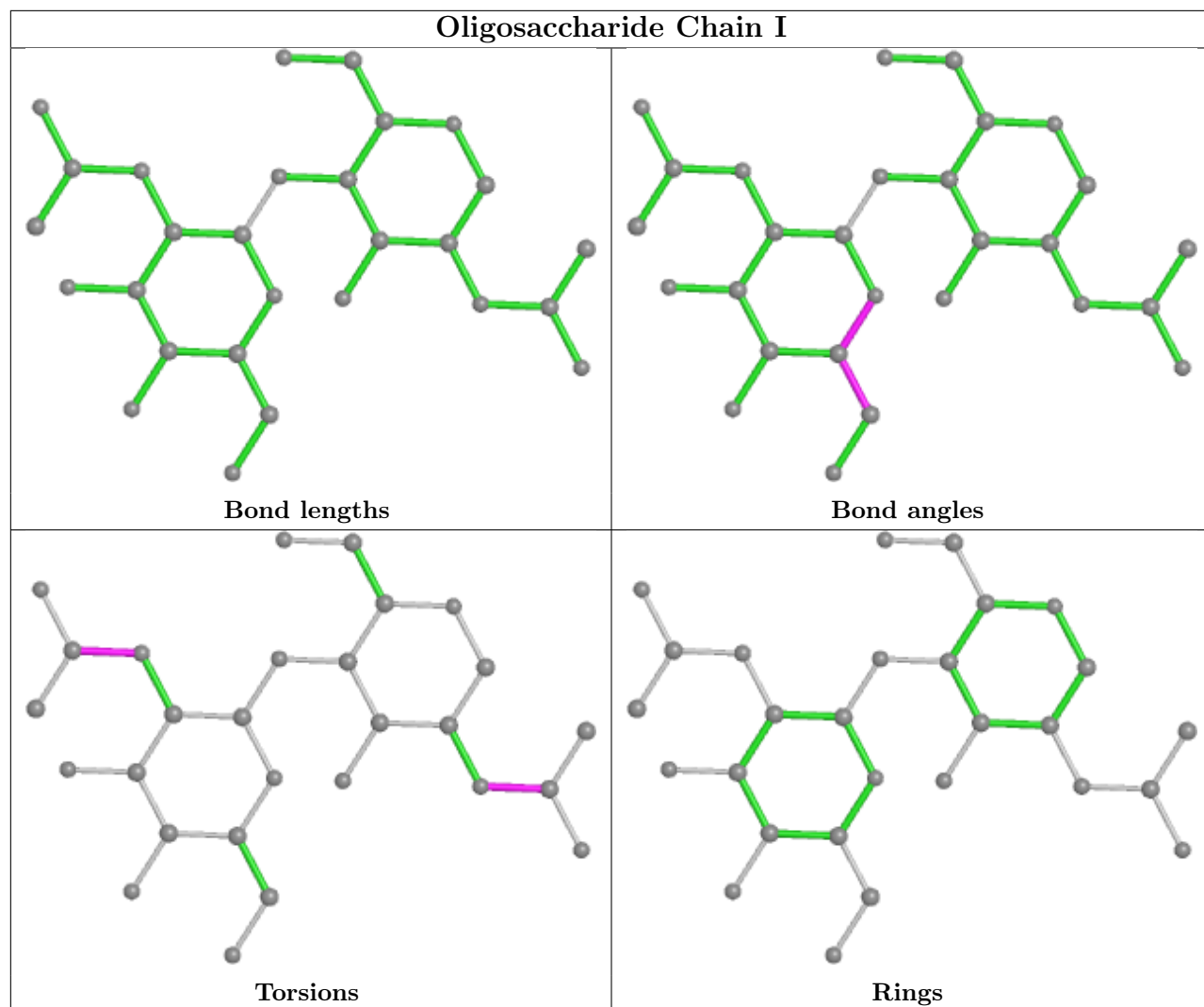
The following is a two-dimensional graphical depiction of Mogul quality analysis of bond lengths, bond angles, torsion angles, and ring geometry for oligosaccharide.

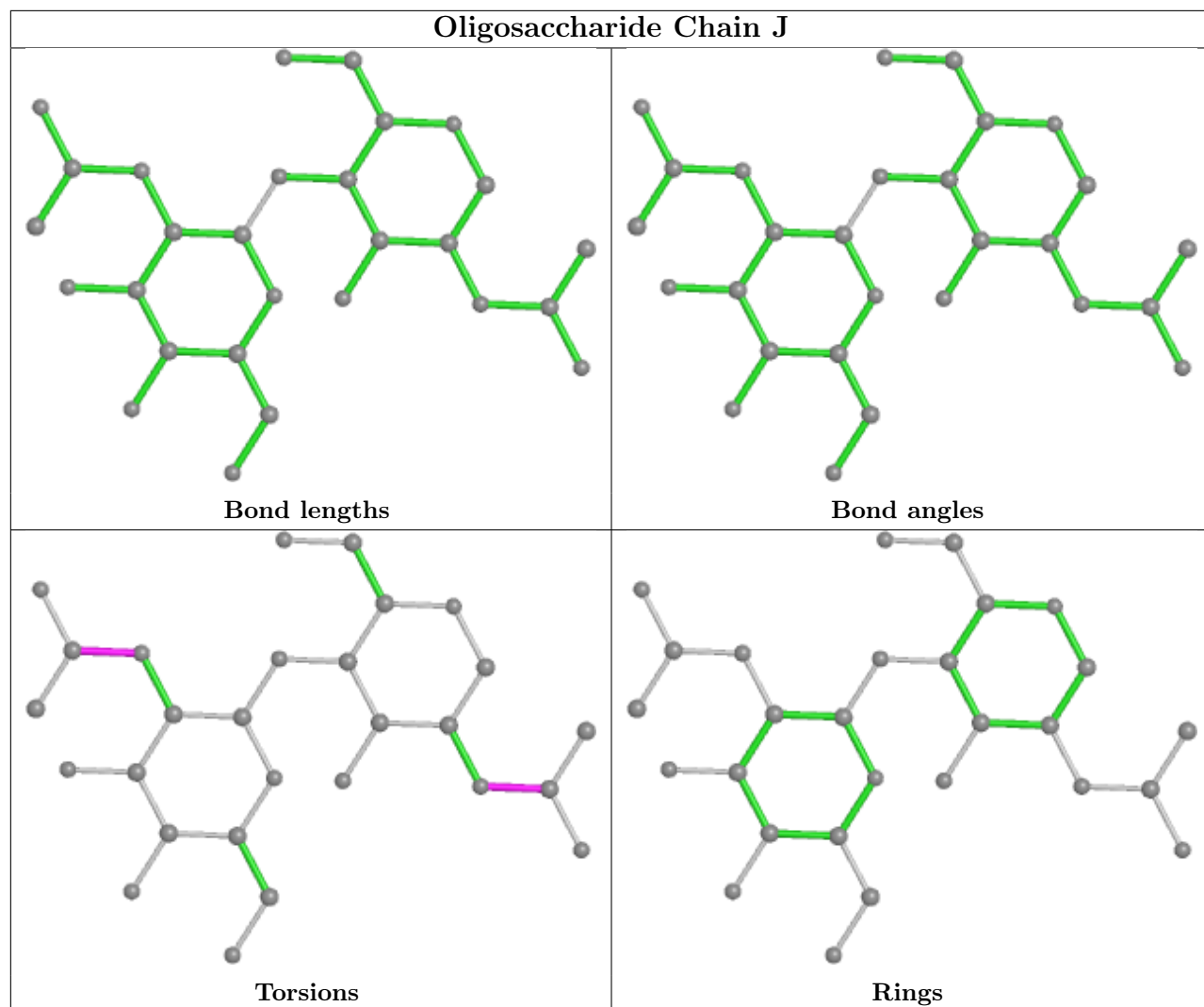


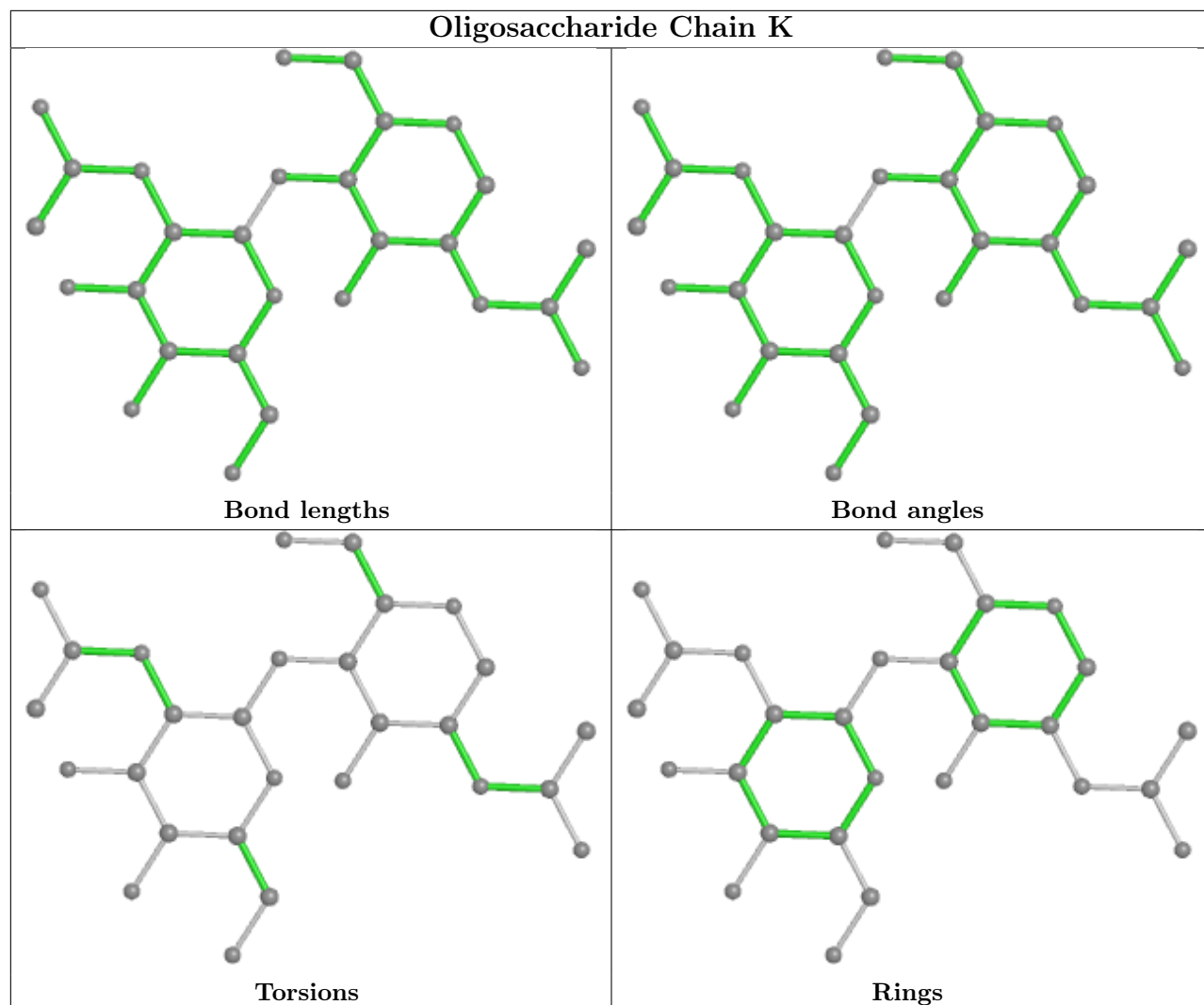


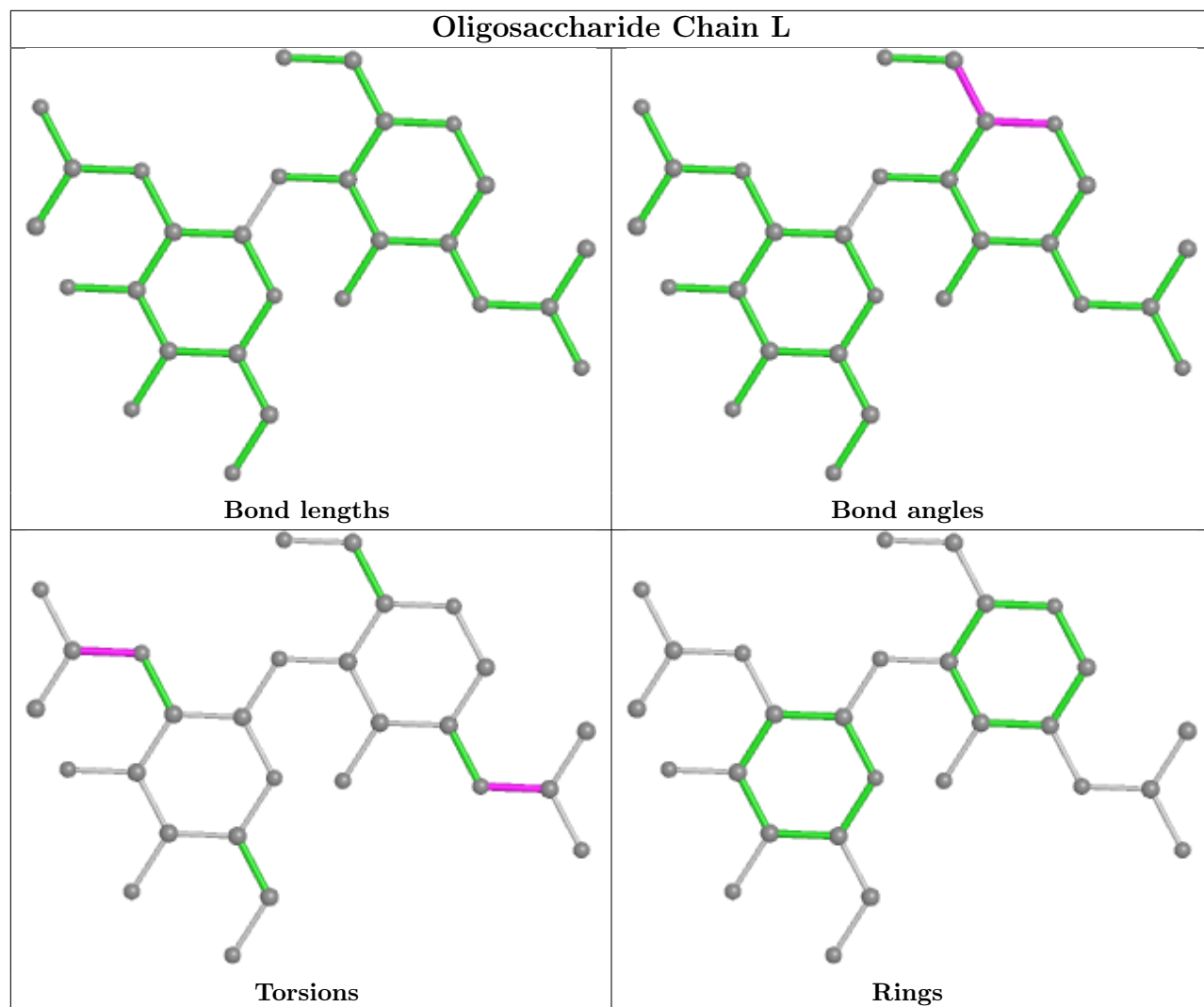


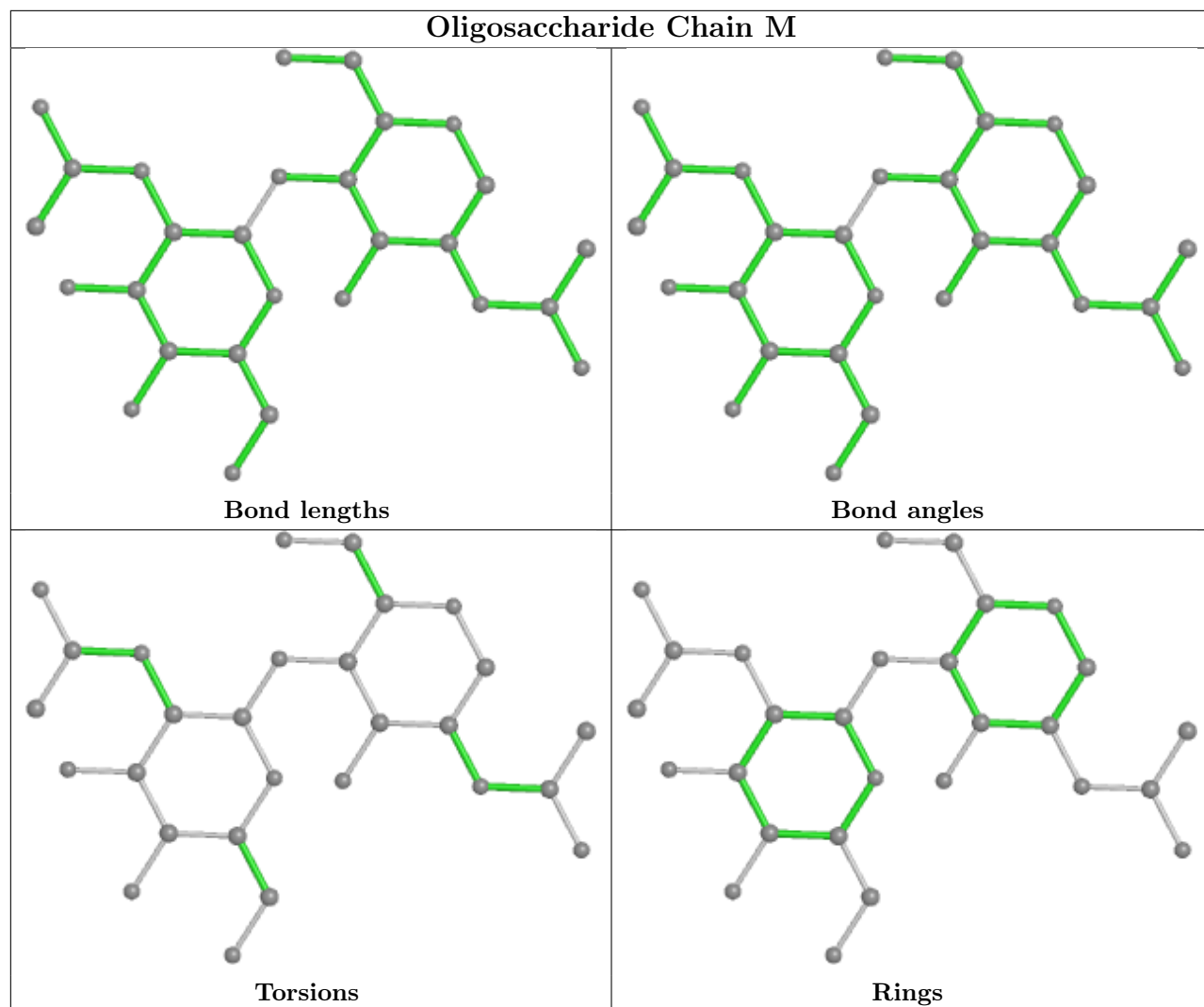


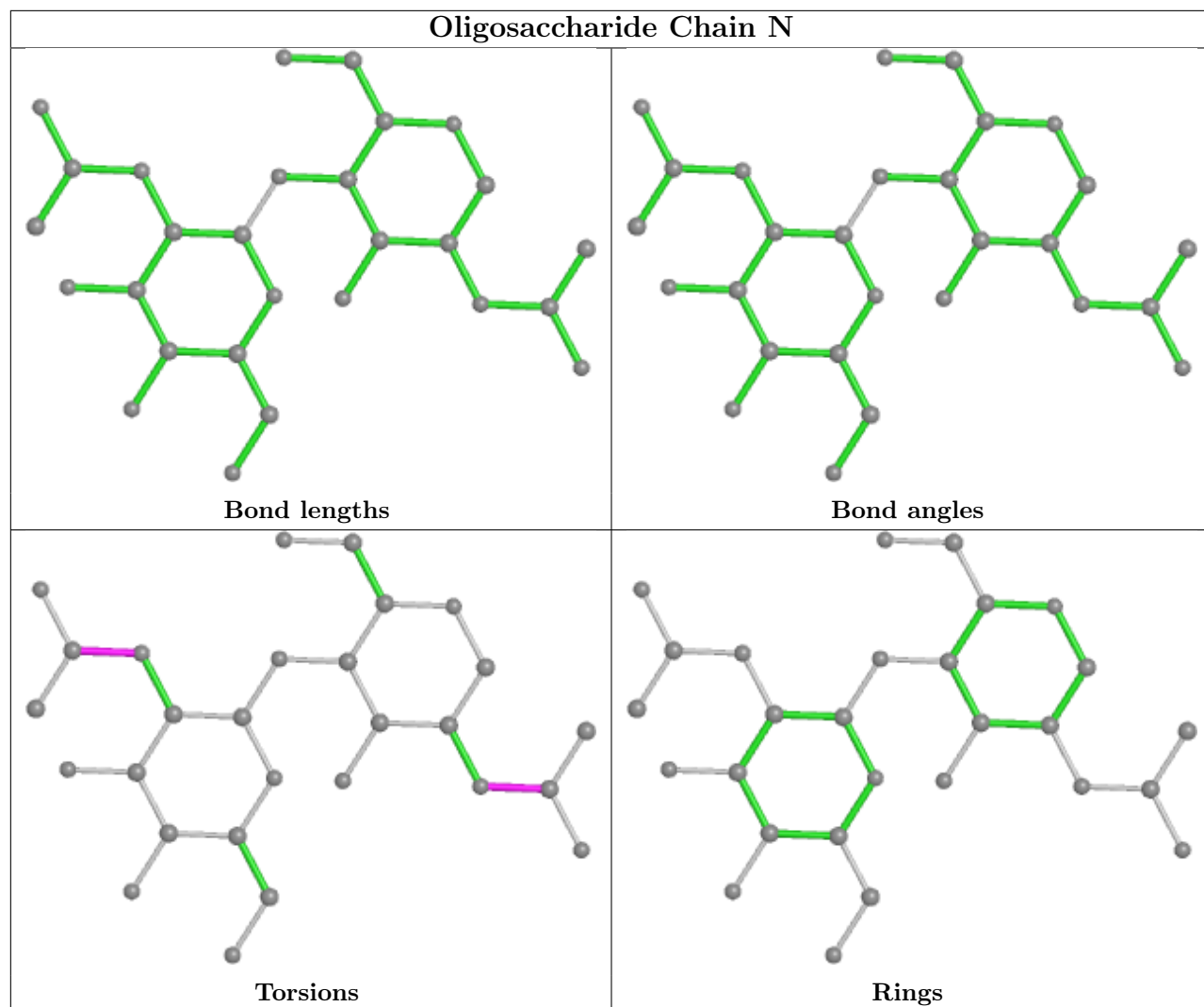


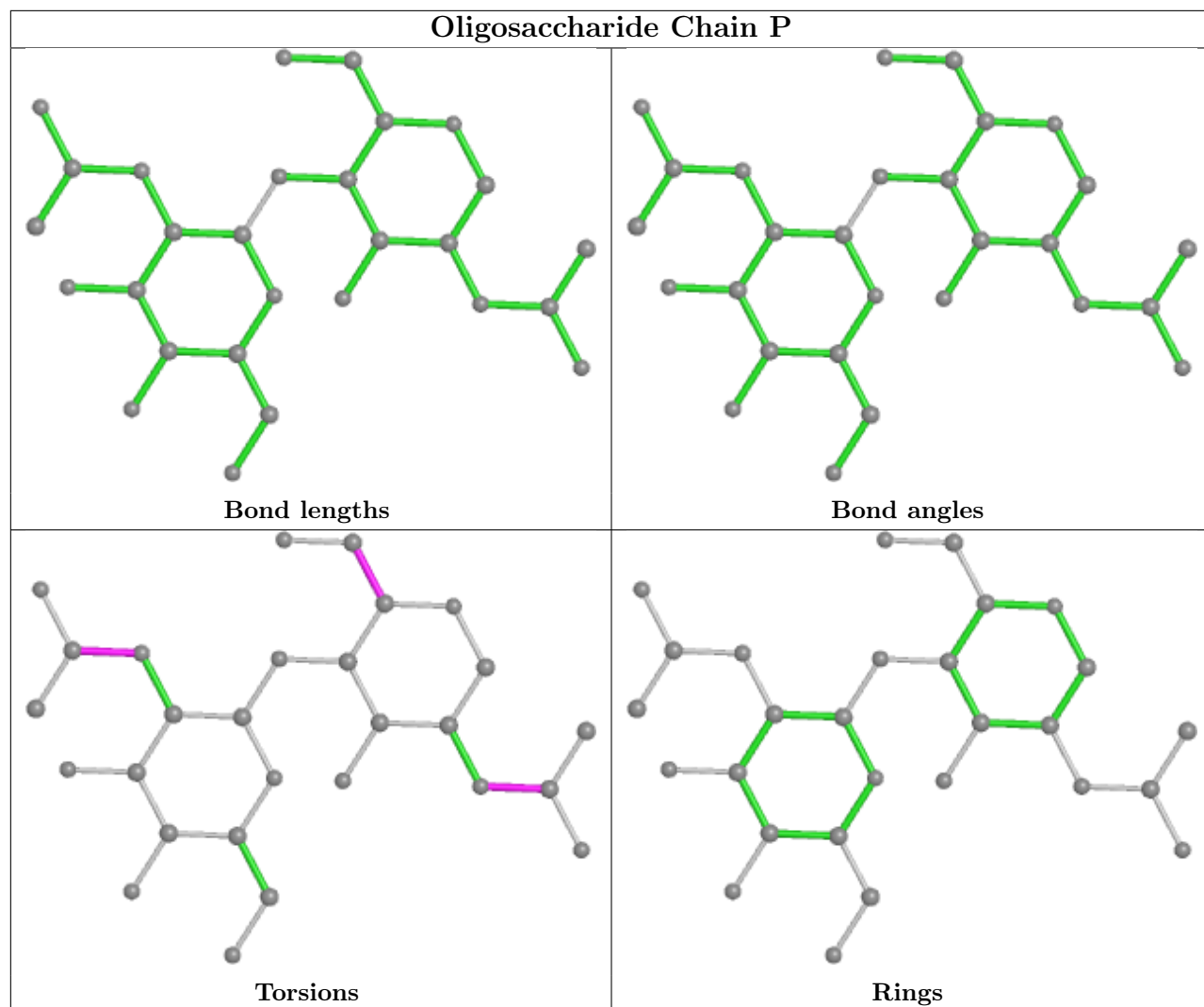


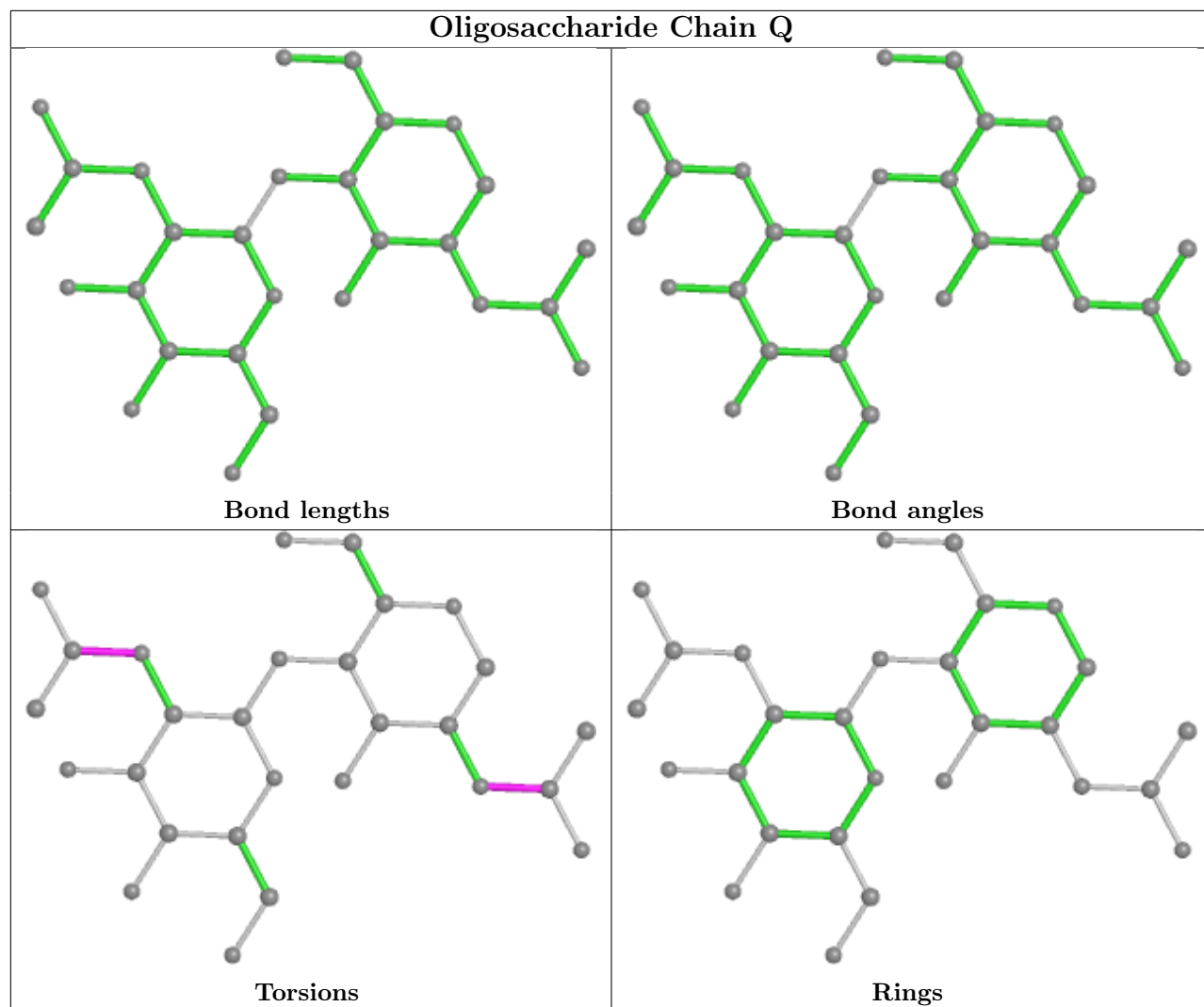


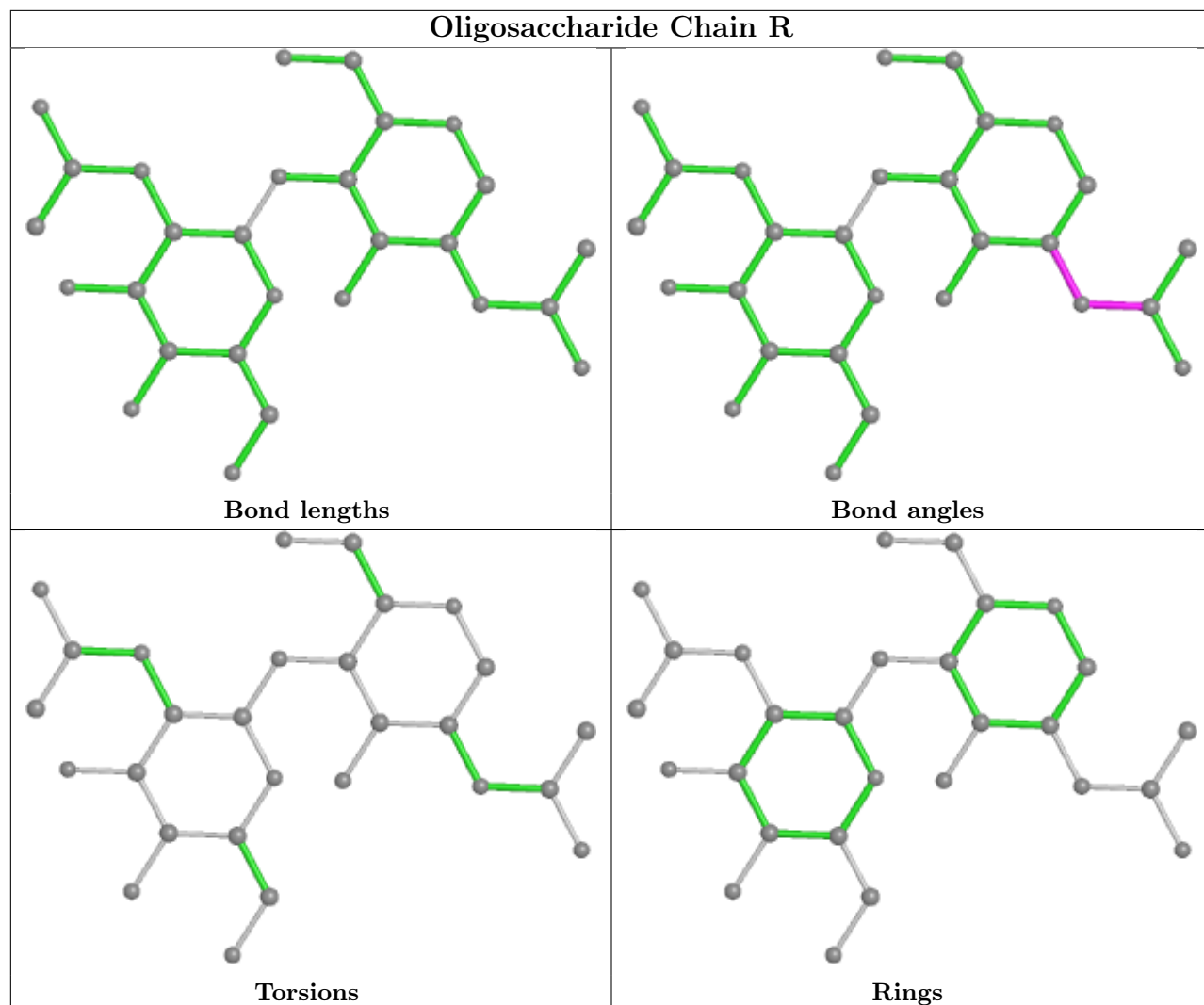


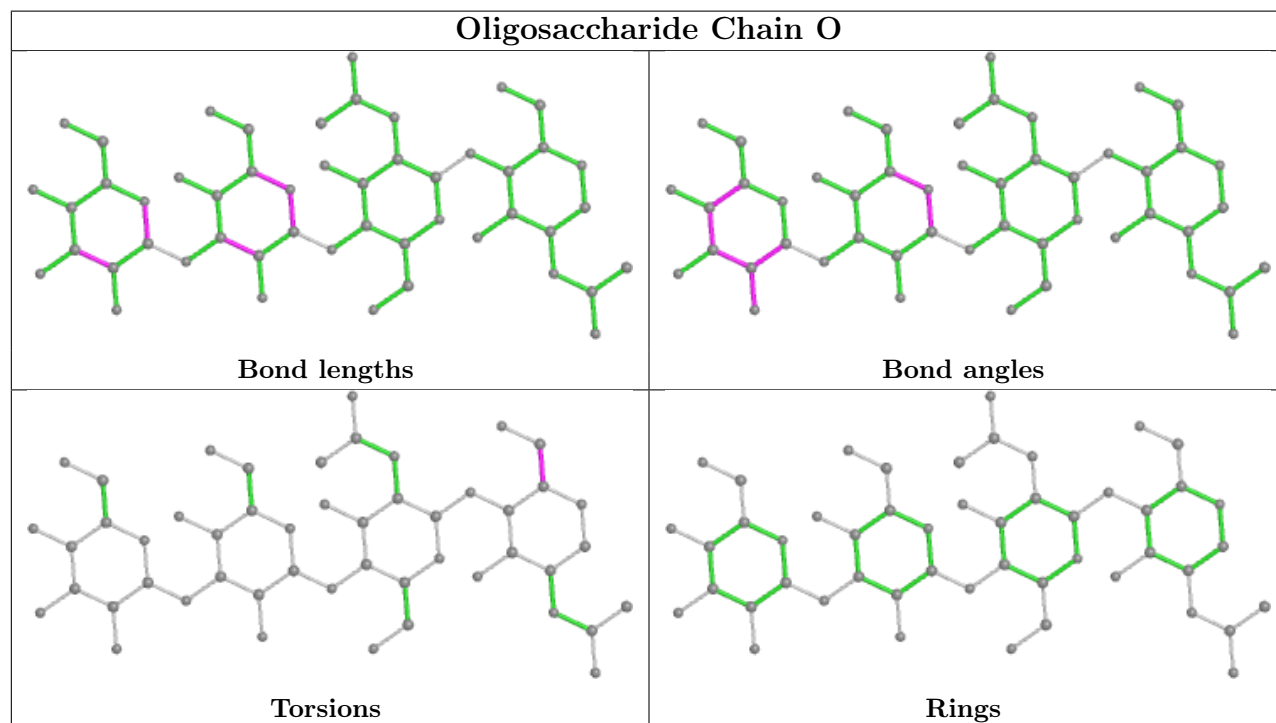
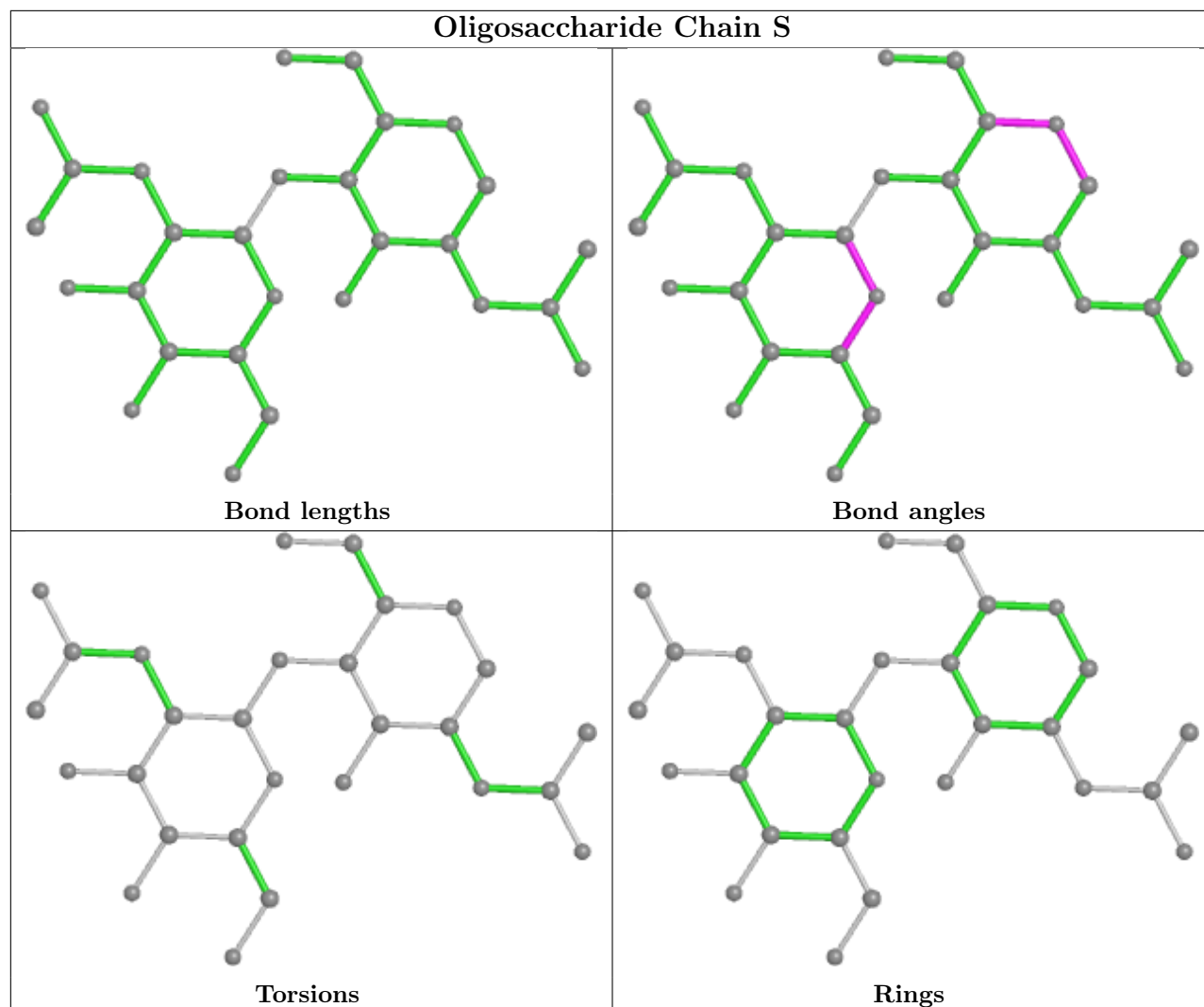












5.6 Ligand geometry

Of 24 ligands modelled in this entry, 4 are monoatomic - leaving 20 for Mogul analysis.

In the following table, the Counts columns list the number of bonds (or angles) for which Mogul statistics could be retrieved, the number of bonds (or angles) that are observed in the model and the number of bonds (or angles) that are defined in the Chemical Component Dictionary. The Link column lists molecule types, if any, to which the group is linked. The Z score for a bond length (or angle) is the number of standard deviations the observed value is removed from the expected value. A bond length (or angle) with $|Z| > 2$ is considered an outlier worth inspection. RMSZ is the root-mean-square of all Z scores of the bond lengths (or angles).

Mol	Type	Chain	Res	Link	Bond lengths			Bond angles		
					Counts	RMSZ	# Z > 2	Counts	RMSZ	# Z > 2
6	NAG	B	1011	1	14,14,15	0.56	0	17,19,21	0.90	1 (5%)
6	NAG	D	1013	1	14,14,15	0.49	0	17,19,21	0.84	0
6	NAG	B	1010	1	14,14,15	0.53	0	17,19,21	0.73	0
7	ACT	A	1017	5	3,3,3	0.79	0	3,3,3	0.76	0
7	ACT	C	1011	5	3,3,3	0.82	0	3,3,3	0.79	0
6	NAG	C	1009	-	14,14,15	0.61	0	17,19,21	1.10	2 (11%)
6	NAG	C	1006	1	14,14,15	0.44	0	17,19,21	0.88	0
7	ACT	D	1020	5	3,3,3	0.77	0	3,3,3	0.82	0
6	NAG	D	1019	1	14,14,15	0.60	0	17,19,21	0.73	0
6	NAG	A	1016	1	14,14,15	0.52	0	17,19,21	0.64	0
6	NAG	A	1013	1	14,14,15	0.48	0	17,19,21	0.76	0
6	NAG	C	1003	1	14,14,15	0.55	0	17,19,21	0.64	0
6	NAG	D	1014	1	14,14,15	0.49	0	17,19,21	0.88	1 (5%)
6	NAG	A	1002	1	14,14,15	0.51	0	17,19,21	0.68	0
7	ACT	B	1012	5	3,3,3	0.83	0	3,3,3	0.68	0
6	NAG	B	1007	1	14,14,15	0.48	0	17,19,21	0.79	0
6	NAG	D	1012	1	14,14,15	0.52	0	17,19,21	0.73	0
6	NAG	C	1002	1	14,14,15	0.55	0	17,19,21	0.65	0
6	NAG	C	1010	1	14,14,15	0.63	0	17,19,21	0.99	0
6	NAG	B	1002	1	14,14,15	0.51	0	17,19,21	0.70	0

In the following table, the Chirals column lists the number of chiral outliers, the number of chiral centers analysed, the number of these observed in the model and the number defined in the Chemical Component Dictionary. Similar counts are reported in the Torsion and Rings columns. '-' means no outliers of that kind were identified.

Mol	Type	Chain	Res	Link	Chirals	Torsions	Rings
6	NAG	C	1006	1	-	0/6/23/26	0/1/1/1
6	NAG	B	1007	1	-	0/6/23/26	0/1/1/1
6	NAG	D	1014	1	-	0/6/23/26	0/1/1/1
6	NAG	B	1011	1	-	2/6/23/26	0/1/1/1

Continued on next page...

Continued from previous page...

Mol	Type	Chain	Res	Link	Chirals	Torsions	Rings
6	NAG	D	1013	1	-	0/6/23/26	0/1/1/1
6	NAG	D	1019	1	-	2/6/23/26	0/1/1/1
6	NAG	D	1012	1	-	0/6/23/26	0/1/1/1
6	NAG	C	1002	1	-	2/6/23/26	0/1/1/1
6	NAG	B	1010	1	-	2/6/23/26	0/1/1/1
6	NAG	A	1002	1	-	4/6/23/26	0/1/1/1
6	NAG	C	1009	-	-	2/6/23/26	0/1/1/1
6	NAG	C	1010	1	-	2/6/23/26	0/1/1/1
6	NAG	B	1002	1	-	3/6/23/26	0/1/1/1
6	NAG	A	1016	1	-	2/6/23/26	0/1/1/1
6	NAG	A	1013	1	-	0/6/23/26	0/1/1/1
6	NAG	C	1003	1	-	4/6/23/26	0/1/1/1

There are no bond length outliers.

All (4) bond angle outliers are listed below:

Mol	Chain	Res	Type	Atoms	Z	Observed(°)	Ideal(°)
6	C	1009	NAG	O5-C1-C2	-2.67	107.07	111.29
6	C	1009	NAG	C4-C3-C2	-2.35	107.58	111.02
6	B	1011	NAG	C2-N2-C7	2.08	125.87	122.90
6	D	1014	NAG	C2-N2-C7	-2.05	119.98	122.90

There are no chirality outliers.

5 of 25 torsion outliers are listed below:

Mol	Chain	Res	Type	Atoms
6	C	1009	NAG	O5-C5-C6-O6
6	B	1010	NAG	C4-C5-C6-O6
6	A	1002	NAG	C8-C7-N2-C2
6	A	1002	NAG	O7-C7-N2-C2
6	A	1016	NAG	C8-C7-N2-C2

There are no ring outliers.

9 monomers are involved in 14 short contacts:

Mol	Chain	Res	Type	Clashes	Symm-Clashes
6	B	1011	NAG	2	0
6	B	1010	NAG	1	0
6	C	1009	NAG	1	0

Continued on next page...

Continued from previous page...

Mol	Chain	Res	Type	Clashes	Symm-Clashes
6	C	1006	NAG	2	0
6	D	1019	NAG	2	0
6	A	1016	NAG	2	0
6	C	1003	NAG	3	0
6	D	1012	NAG	1	0
6	C	1010	NAG	2	0

5.7 Other polymers [i](#)

There are no such residues in this entry.

5.8 Polymer linkage issues [i](#)

There are no chain breaks in this entry.

6 Fit of model and data [i](#)

6.1 Protein, DNA and RNA chains [i](#)

In the following table, the column labelled ‘#RSRZ> 2’ contains the number (and percentage) of RSRZ outliers, followed by percent RSRZ outliers for the chain as percentile scores relative to all X-ray entries and entries of similar resolution. The OWAB column contains the minimum, median, 95th percentile and maximum values of the occupancy-weighted average B-factor per residue. The column labelled ‘Q< 0.9’ lists the number of (and percentage) of residues with an average occupancy less than 0.9.

Mol	Chain	Analysed	<RSRZ>	#RSRZ>2	OWAB(Å ²)	Q<0.9
1	A	900/945 (95%)	-0.99	1 (0%) 95 95	3, 10, 26, 55	0
1	B	898/945 (95%)	-0.90	4 (0%) 92 92	7, 15, 31, 54	0
1	C	899/945 (95%)	-0.92	2 (0%) 95 94	6, 14, 31, 60	0
1	D	898/945 (95%)	-0.97	2 (0%) 95 94	4, 11, 27, 60	0
All	All	3595/3780 (95%)	-0.94	9 (0%) 94 93	3, 13, 29, 60	0

The worst 5 of 9 RSRZ outliers are listed below:

Mol	Chain	Res	Type	RSRZ
1	D	93	ALA	3.7
1	B	352	TRP	2.8
1	A	93	ALA	2.7
1	D	566	SER	2.5
1	B	93	ALA	2.3

6.2 Non-standard residues in protein, DNA, RNA chains [i](#)

There are no non-standard protein/DNA/RNA residues in this entry.

6.3 Carbohydrates [i](#)

In the following table, the Atoms column lists the number of modelled atoms in the group and the number defined in the chemical component dictionary. The B-factors column lists the minimum, median, 95th percentile and maximum values of B factors of atoms in the group. The column labelled ‘Q< 0.9’ lists the number of atoms with occupancy less than 0.9.

Mol	Type	Chain	Res	Atoms	RSCC	RSR	B-factors(Å ²)	Q<0.9
2	BMA	E	6	11/12	0.53	0.30	118,125,128,129	0
3	NAG	I	2	14/15	0.78	0.26	49,58,64,68	0

Continued on next page...

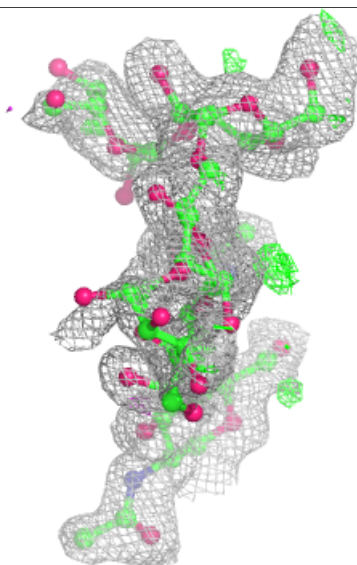
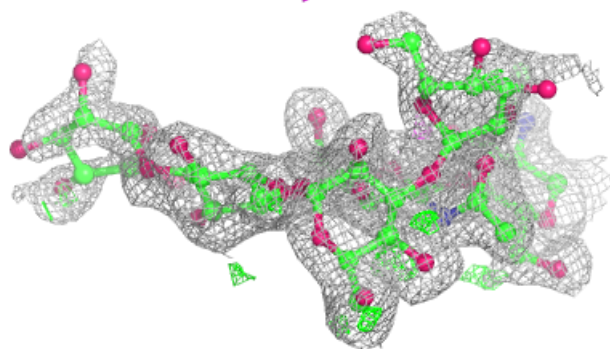
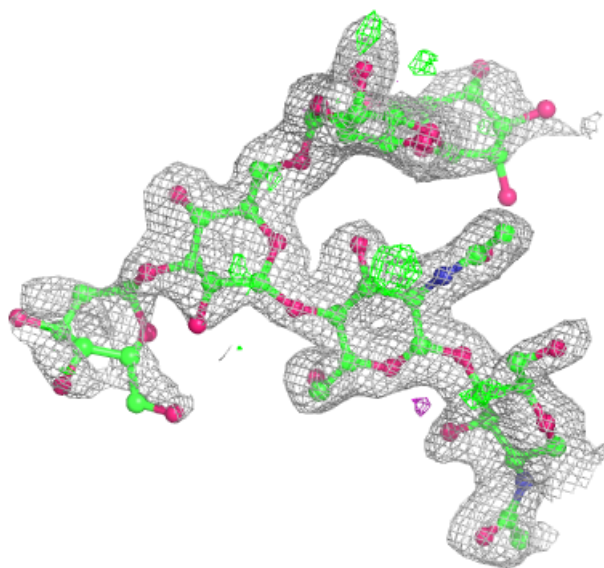
Continued from previous page...

Mol	Type	Chain	Res	Atoms	RSCC	RSR	B-factors(\AA^2)	Q<0.9
2	BMA	E	5	11/12	0.81	0.27	52,54,62,64	0
3	NAG	N	2	14/15	0.85	0.19	45,50,52,56	0
3	NAG	M	2	14/15	0.86	0.25	42,47,57,59	0
3	NAG	P	2	14/15	0.87	0.14	35,41,48,55	0
3	NAG	R	2	14/15	0.87	0.17	30,43,53,55	0
3	NAG	K	2	14/15	0.88	0.21	41,46,51,52	0
3	NAG	L	2	14/15	0.88	0.15	33,41,46,54	0
2	BMA	E	3	11/12	0.89	0.14	24,48,69,94	0
3	NAG	F	2	14/15	0.90	0.15	24,30,36,37	0
3	NAG	S	2	14/15	0.90	0.17	34,45,48,50	0
4	BMA	O	3	11/12	0.90	0.13	28,39,53,60	0
2	NAG	E	2	14/15	0.91	0.13	26,35,41,47	0
2	BMA	E	4	11/12	0.91	0.11	29,33,41,46	0
4	NAG	O	2	14/15	0.92	0.14	36,38,42,44	0
3	NAG	J	2	14/15	0.92	0.12	26,38,41,46	0
3	NAG	H	2	14/15	0.93	0.12	27,34,44,51	0
2	NAG	E	1	14/15	0.93	0.11	19,32,41,41	0
3	NAG	L	1	14/15	0.94	0.09	15,27,34,37	0
3	NAG	Q	1	14/15	0.94	0.09	16,23,31,36	0
3	NAG	I	1	14/15	0.94	0.10	8,21,36,39	0
3	NAG	K	1	14/15	0.94	0.11	19,28,35,44	0
4	NAG	O	1	14/15	0.94	0.13	17,33,43,43	0
3	NAG	N	1	14/15	0.94	0.11	15,28,40,45	0
3	NAG	G	2	14/15	0.94	0.10	26,33,40,42	0
3	NAG	Q	2	14/15	0.95	0.14	29,39,47,53	0
3	NAG	S	1	14/15	0.95	0.11	24,30,43,44	0
4	BMA	O	4	11/12	0.95	0.10	12,19,25,36	0
3	NAG	M	1	14/15	0.96	0.11	13,30,37,41	0
3	NAG	P	1	14/15	0.96	0.09	3,16,26,26	0
3	NAG	J	1	14/15	0.96	0.07	17,27,31,39	0
3	NAG	F	1	14/15	0.96	0.06	0,16,20,25	0
3	NAG	R	1	14/15	0.97	0.08	6,17,26,33	0
3	NAG	G	1	14/15	0.97	0.06	14,18,26,28	0
3	NAG	H	1	14/15	0.98	0.07	6,16,30,39	0

The following is a graphical depiction of the model fit to experimental electron density for oligosaccharide. Each fit is shown from different orientation to approximate a three-dimensional view.

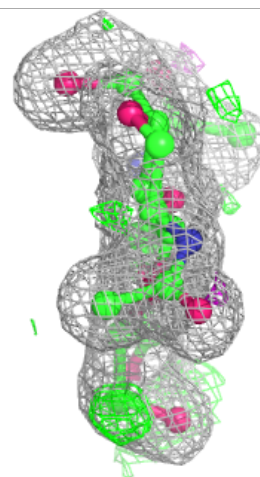
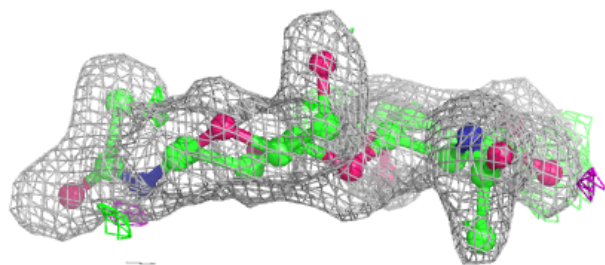
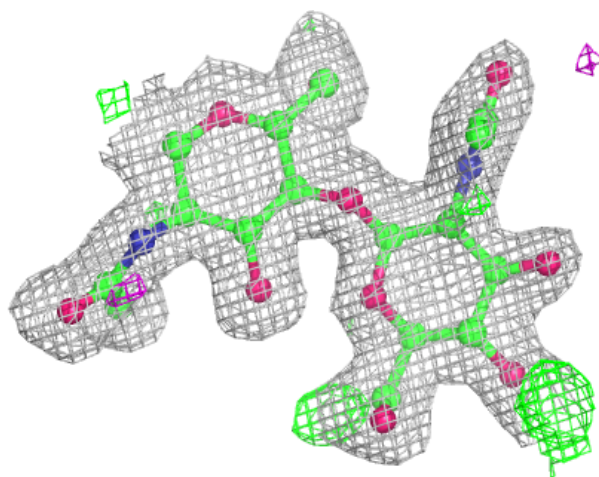
Electron density around Chain E:

$2mF_o-DF_c$ (at 0.7 rmsd) in gray
 mF_o-DF_c (at 3 rmsd) in purple (negative)
and green (positive)



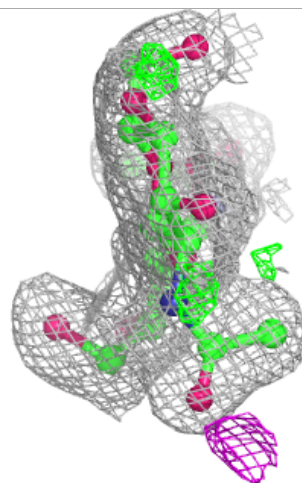
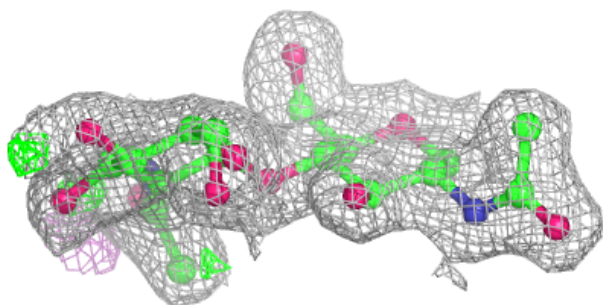
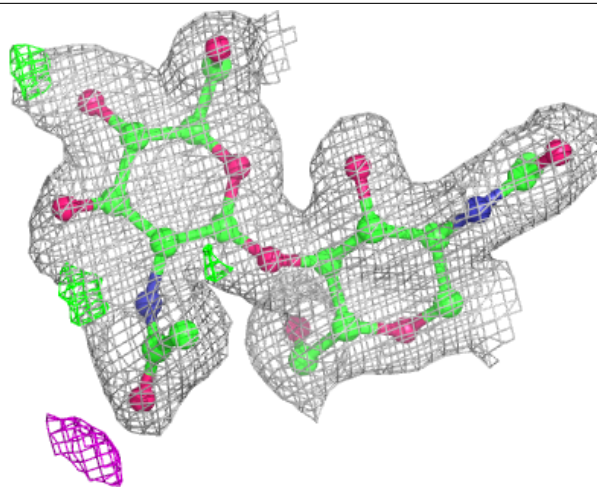
Electron density around Chain F:

$2mF_o-DF_c$ (at 0.7 rmsd) in gray
 mF_o-DF_c (at 3 rmsd) in purple (negative)
and green (positive)



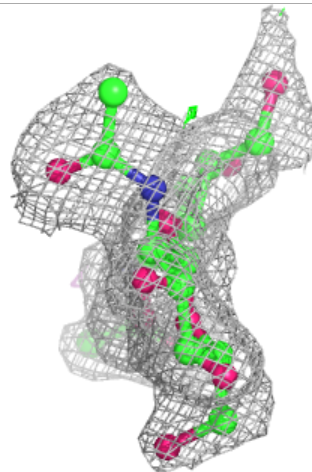
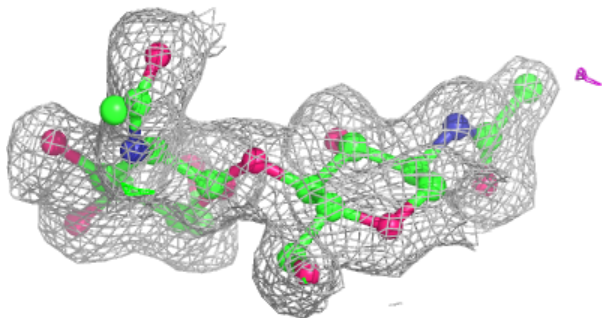
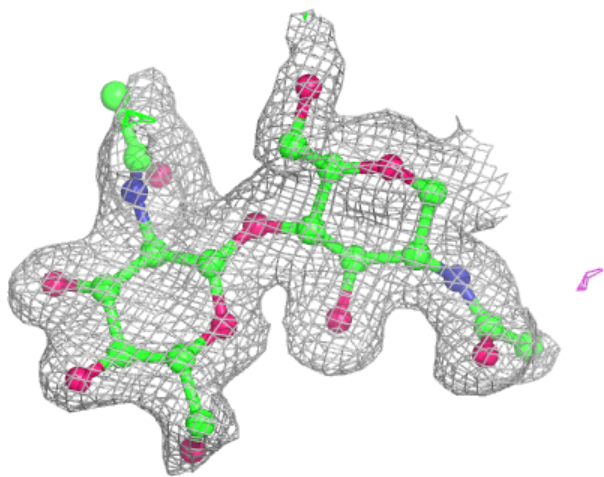
Electron density around Chain G:

$2mF_o-DF_c$ (at 0.7 rmsd) in gray
 mF_o-DF_c (at 3 rmsd) in purple (negative)
and green (positive)



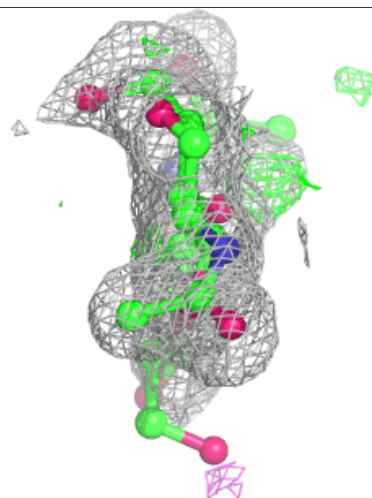
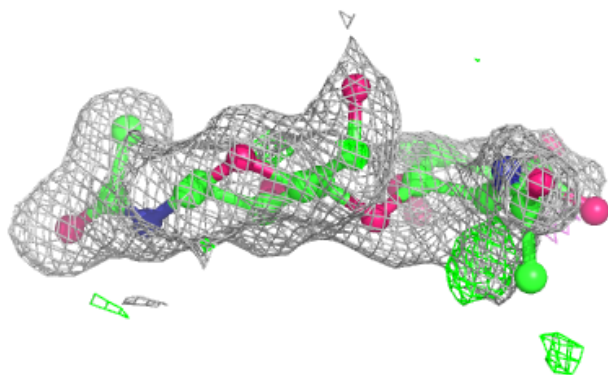
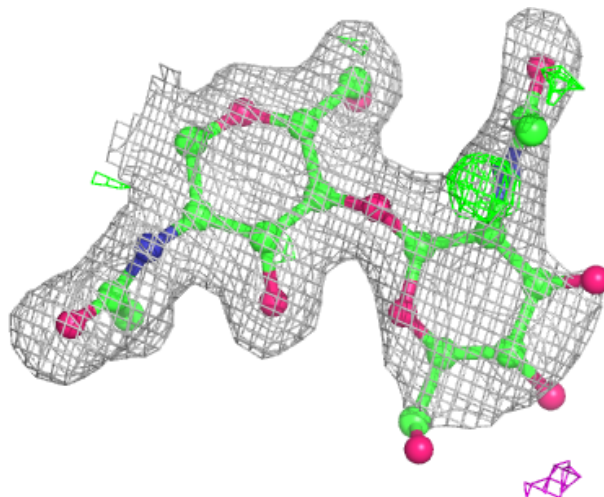
Electron density around Chain H:

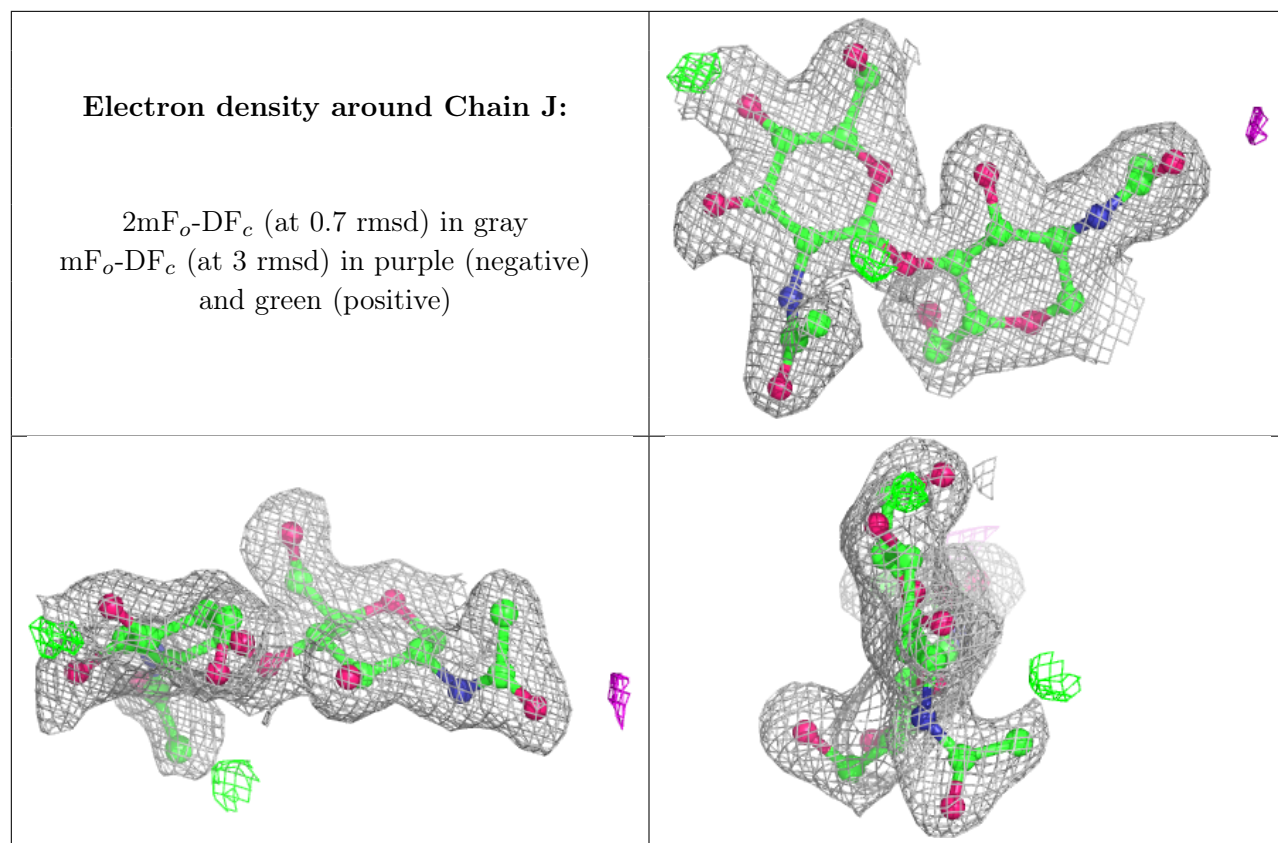
$2mF_o-DF_c$ (at 0.7 rmsd) in gray
 mF_o-DF_c (at 3 rmsd) in purple (negative)
and green (positive)



Electron density around Chain I:

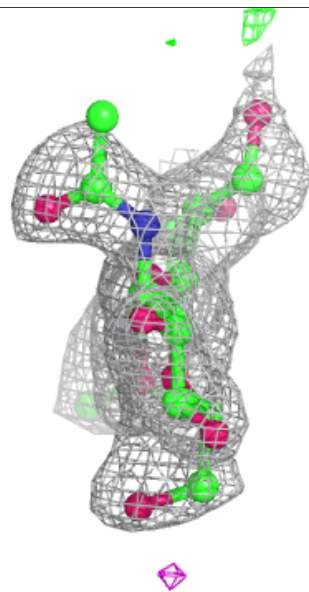
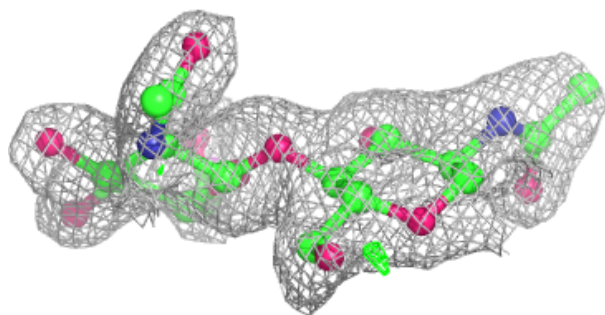
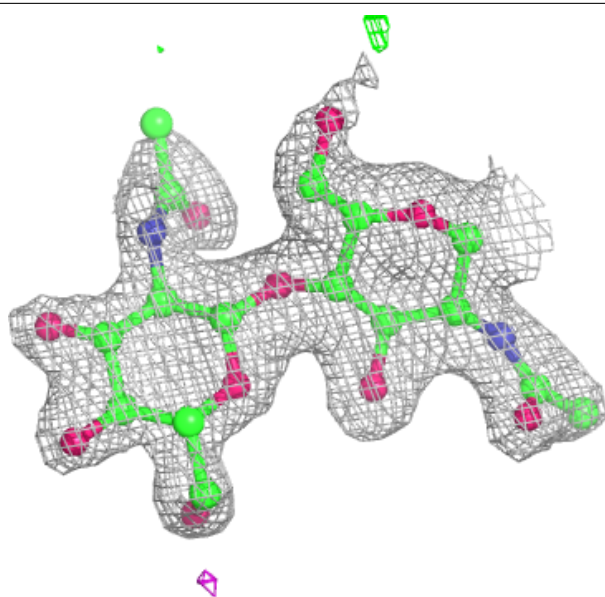
$2mF_o-DF_c$ (at 0.7 rmsd) in gray
 mF_o-DF_c (at 3 rmsd) in purple (negative)
and green (positive)





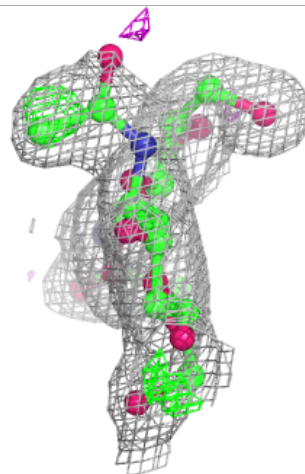
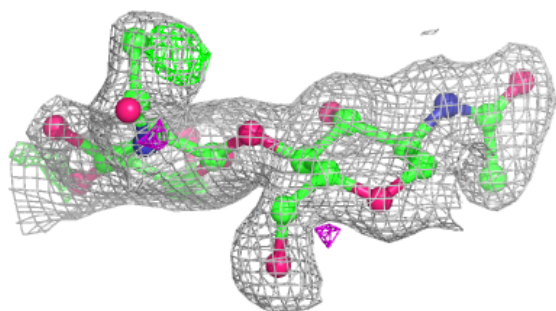
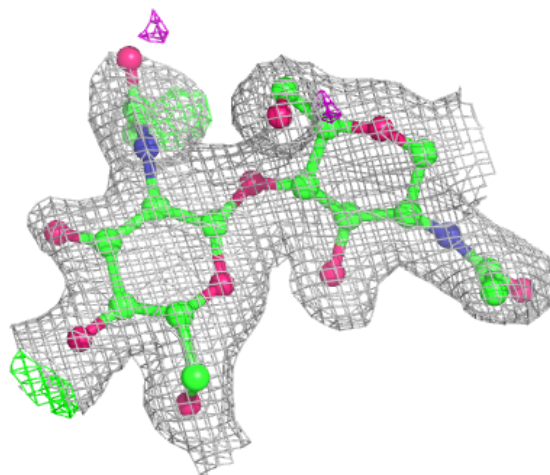
Electron density around Chain K:

$2mF_o-DF_c$ (at 0.7 rmsd) in gray
 mF_o-DF_c (at 3 rmsd) in purple (negative)
and green (positive)



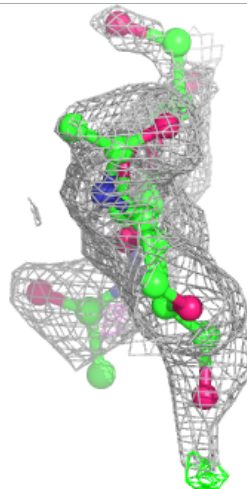
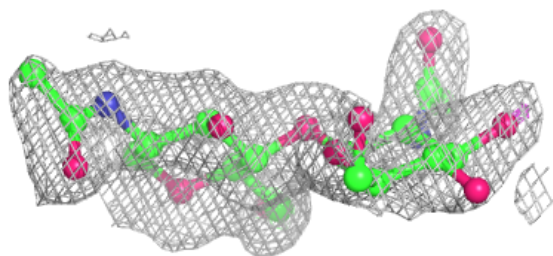
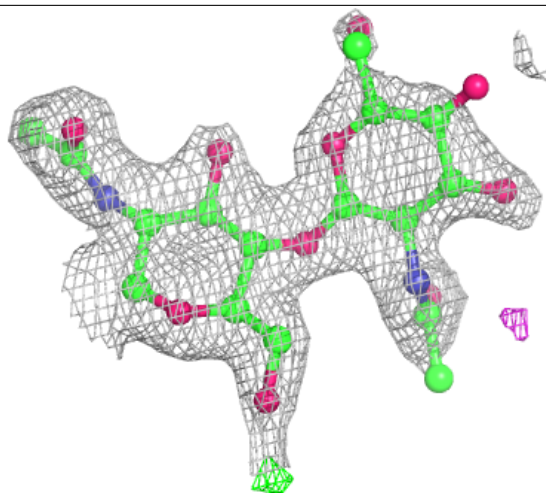
Electron density around Chain L:

$2mF_o-DF_c$ (at 0.7 rmsd) in gray
 mF_o-DF_c (at 3 rmsd) in purple (negative)
and green (positive)



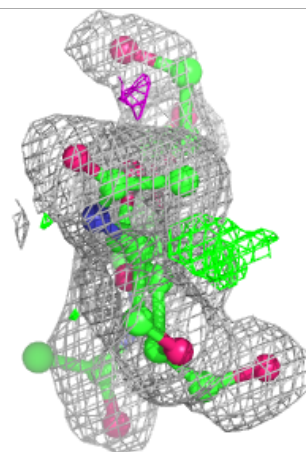
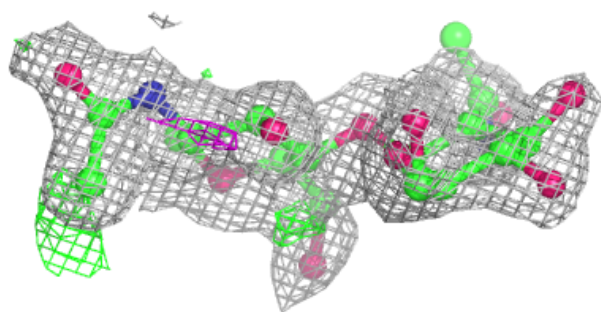
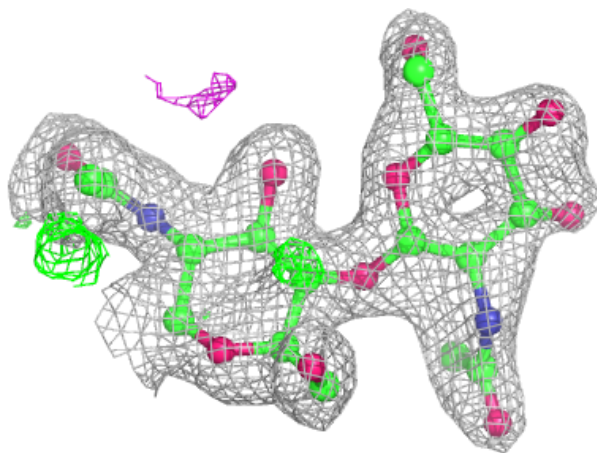
Electron density around Chain M:

$2mF_o-DF_c$ (at 0.7 rmsd) in gray
 mF_o-DF_c (at 3 rmsd) in purple (negative)
and green (positive)



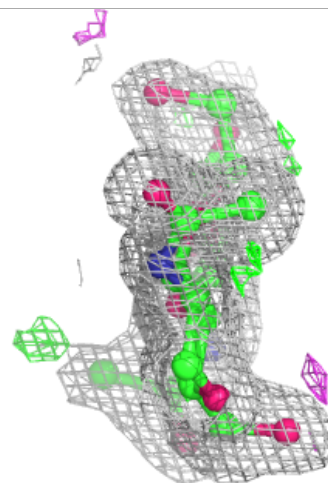
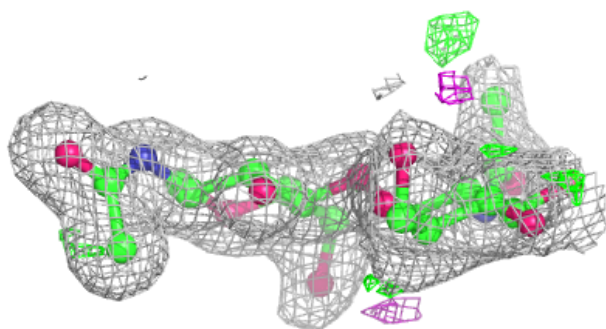
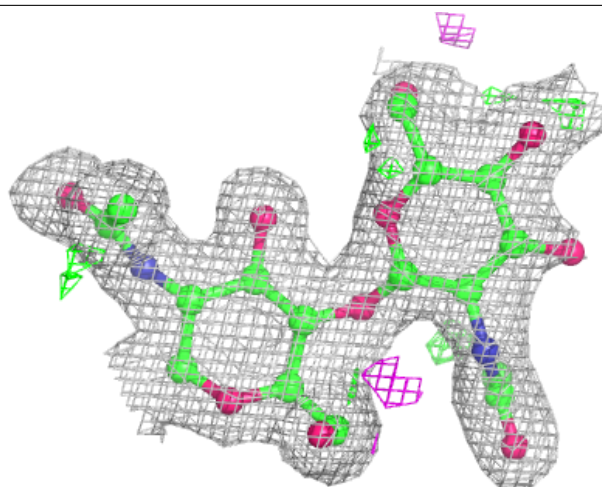
Electron density around Chain N:

$2mF_o-DF_c$ (at 0.7 rmsd) in gray
 mF_o-DF_c (at 3 rmsd) in purple (negative)
and green (positive)



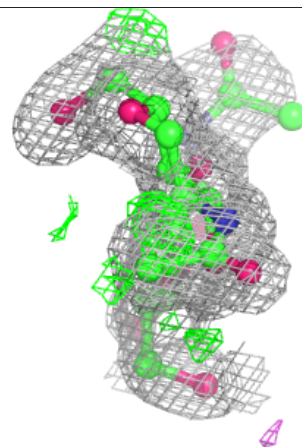
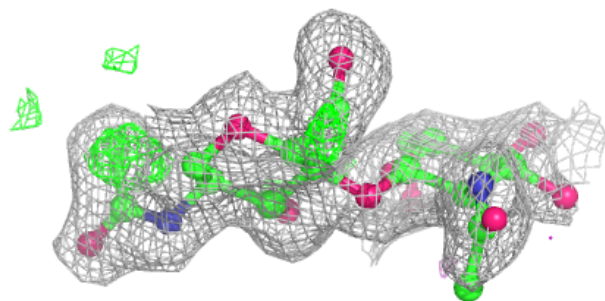
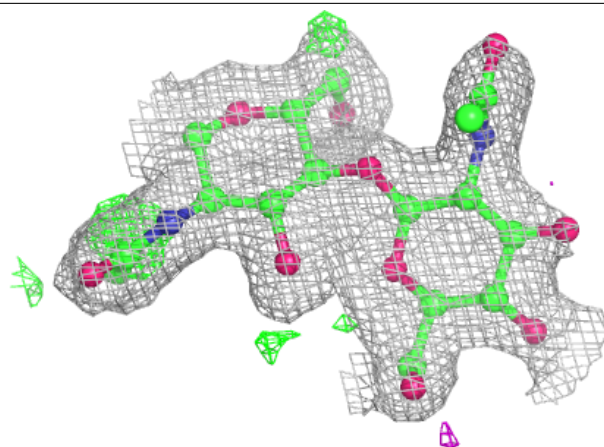
Electron density around Chain P:

$2mF_o-DF_c$ (at 0.7 rmsd) in gray
 mF_o-DF_c (at 3 rmsd) in purple (negative)
and green (positive)



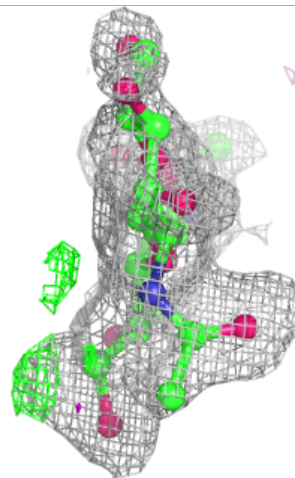
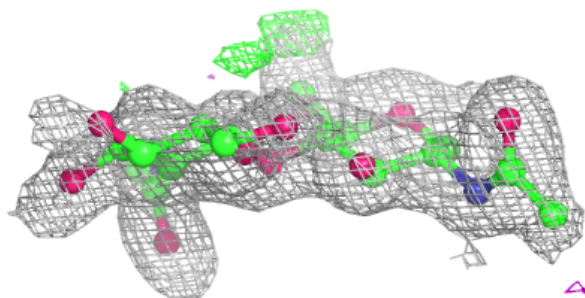
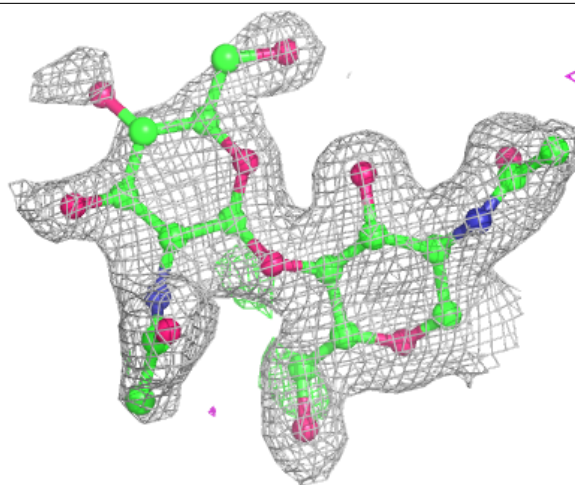
Electron density around Chain Q:

$2mF_o-DF_c$ (at 0.7 rmsd) in gray
 mF_o-DF_c (at 3 rmsd) in purple (negative)
and green (positive)



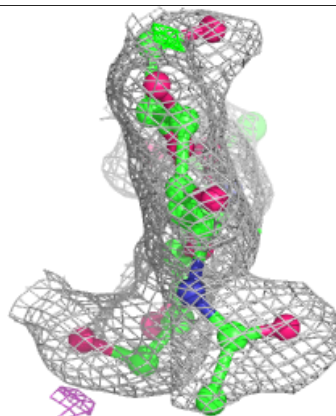
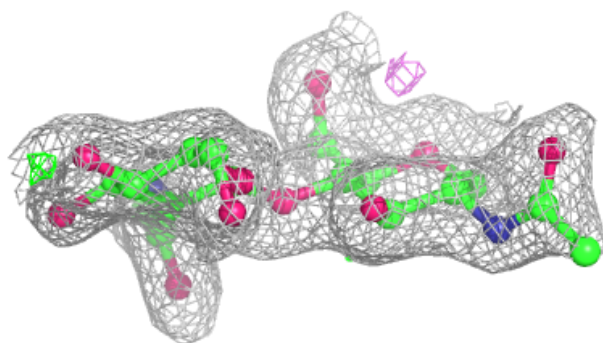
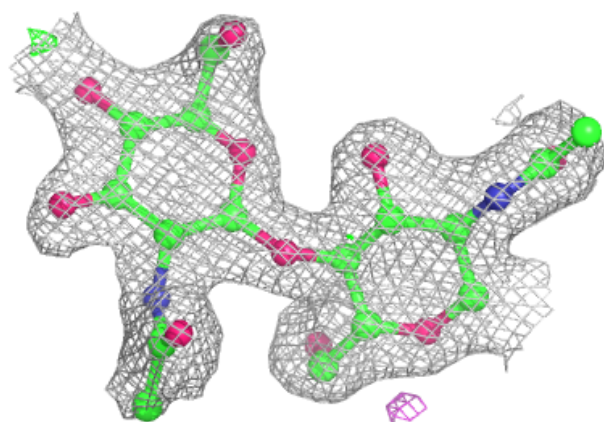
Electron density around Chain R:

$2mF_o-DF_c$ (at 0.7 rmsd) in gray
 mF_o-DF_c (at 3 rmsd) in purple (negative)
and green (positive)

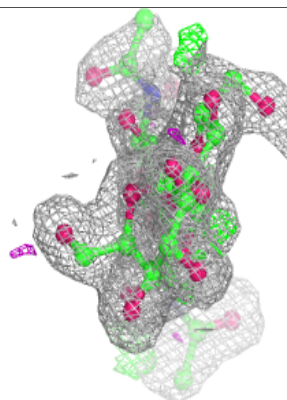
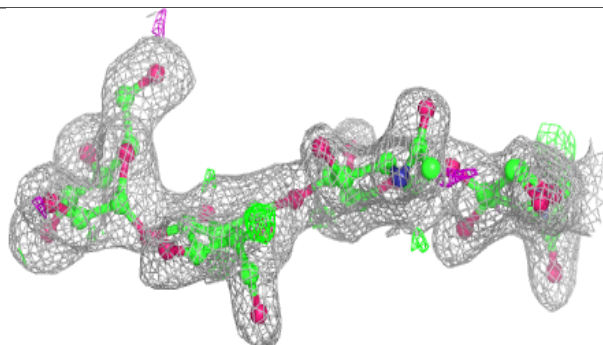
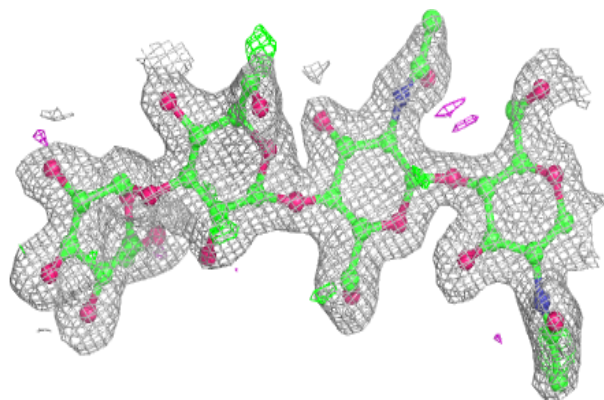


Electron density around Chain S:

$2mF_o-DF_c$ (at 0.7 rmsd) in gray
 mF_o-DF_c (at 3 rmsd) in purple (negative)
and green (positive)

**Electron density around Chain O:**

$2mF_o-DF_c$ (at 0.7 rmsd) in gray
 mF_o-DF_c (at 3 rmsd) in purple (negative)
and green (positive)



6.4 Ligands [i](#)

In the following table, the Atoms column lists the number of modelled atoms in the group and the number defined in the chemical component dictionary. The B-factors column lists the minimum, median, 95th percentile and maximum values of B factors of atoms in the group. The column labelled 'Q< 0.9' lists the number of atoms with occupancy less than 0.9.

Mol	Type	Chain	Res	Atoms	RSCC	RSR	B-factors(Å ²)	Q<0.9
6	NAG	C	1009	14/15	0.85	0.13	37,45,48,49	0
6	NAG	B	1011	14/15	0.87	0.12	30,33,44,45	0
6	NAG	C	1010	14/15	0.87	0.17	31,40,46,48	0
6	NAG	B	1010	14/15	0.89	0.15	38,47,54,54	0
6	NAG	D	1012	14/15	0.91	0.15	32,40,47,52	0
6	NAG	D	1013	14/15	0.91	0.13	35,42,54,57	0
6	NAG	D	1019	14/15	0.92	0.14	22,33,45,48	0
6	NAG	A	1016	14/15	0.93	0.11	13,26,38,41	0
6	NAG	A	1002	14/15	0.93	0.11	11,21,30,35	0
6	NAG	C	1002	14/15	0.94	0.12	18,26,35,35	0
6	NAG	C	1006	14/15	0.95	0.10	11,24,31,32	0
6	NAG	B	1002	14/15	0.95	0.10	22,24,32,33	0
6	NAG	C	1003	14/15	0.95	0.09	8,20,35,36	0
6	NAG	B	1007	14/15	0.96	0.08	12,20,24,27	0
6	NAG	D	1014	14/15	0.97	0.08	12,17,26,29	0
6	NAG	A	1013	14/15	0.98	0.07	11,15,20,20	0
7	ACT	C	1011	4/4	0.98	0.08	12,13,15,19	0
7	ACT	B	1012	4/4	0.99	0.07	8,12,13,15	0
7	ACT	A	1017	4/4	0.99	0.07	5,11,13,13	0
7	ACT	D	1020	4/4	0.99	0.08	6,10,13,14	0
5	ZN	A	1001	1/1	1.00	0.04	3,3,3,3	0
5	ZN	B	1001	1/1	1.00	0.06	9,9,9,9	0
5	ZN	C	1001	1/1	1.00	0.06	9,9,9,9	0
5	ZN	D	1001	1/1	1.00	0.07	6,6,6,6	0

6.5 Other polymers [i](#)

There are no such residues in this entry.