



Full wwPDB X-ray Structure Validation Report ⓘ

Sep 23, 2023 – 06:26 PM EDT

PDB ID : 5L1F
Title : AMPA subtype ionotropic glutamate receptor GluA2 in complex with non-competitive inhibitor Perampanel
Authors : Yelshanskaya, M.V.; Singh, A.K.; Sampson, J.M.; Sobolevsky, A.I.
Deposited on : 2016-07-29
Resolution : 4.00 Å(reported)

This is a Full wwPDB X-ray Structure Validation Report for a publicly released PDB entry.

We welcome your comments at validation@mail.wwpdb.org

A user guide is available at

<https://www.wwpdb.org/validation/2017/XrayValidationReportHelp>

with specific help available everywhere you see the ⓘ symbol.

The types of validation reports are described at

<http://www.wwpdb.org/validation/2017/FAQs#types>.

The following versions of software and data (see [references ⓘ](#)) were used in the production of this report:

MolProbity : 4.02b-467
Mogul : 1.8.5 (274361), CSD as541be (2020)
Xtriage (Phenix) : 1.13
EDS : 2.35.1
buster-report : 1.1.7 (2018)
Percentile statistics : 20191225.v01 (using entries in the PDB archive December 25th 2019)
Refmac : 5.8.0158
CCP4 : 7.0.044 (Gargrove)
Ideal geometry (proteins) : Engh & Huber (2001)
Ideal geometry (DNA, RNA) : Parkinson et al. (1996)
Validation Pipeline (wwPDB-VP) : 2.35.1

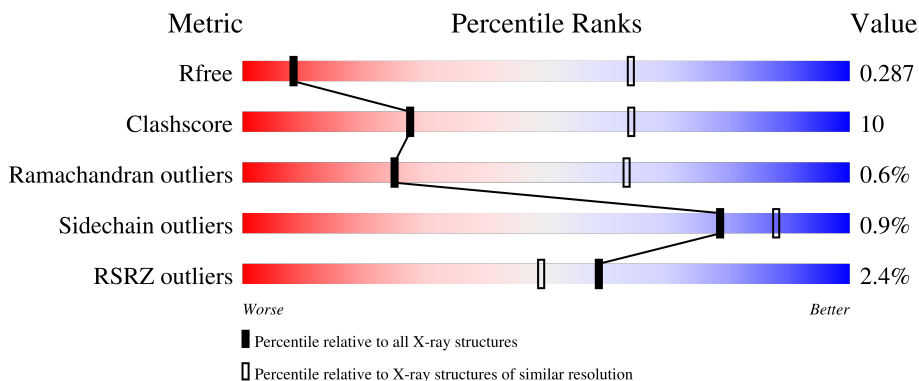
1 Overall quality at a glance i

The following experimental techniques were used to determine the structure:

X-RAY DIFFRACTION

The reported resolution of this entry is 4.00 Å.

Percentile scores (ranging between 0-100) for global validation metrics of the entry are shown in the following graphic. The table shows the number of entries on which the scores are based.



Metric	Whole archive (#Entries)	Similar resolution (#Entries, resolution range(Å))
R_{free}	130704	1087 (4.30-3.70)
Clashscore	141614	1148 (4.30-3.70)
Ramachandran outliers	138981	1108 (4.30-3.70)
Sidechain outliers	138945	1099 (4.30-3.70)
RSRZ outliers	127900	1028 (4.34-3.66)

The table below summarises the geometric issues observed across the polymeric chains and their fit to the electron density. The red, orange, yellow and green segments of the lower bar indicate the fraction of residues that contain outliers for ≥ 3 , 2, 1 and 0 types of geometric quality criteria respectively. A grey segment represents the fraction of residues that are not modelled. The numeric value for each fraction is indicated below the corresponding segment, with a dot representing fractions $\leq 5\%$. The upper red bar (where present) indicates the fraction of residues that have poor fit to the electron density. The numeric value is given above the bar.

Mol	Chain	Length	Quality of chain
1	A	803	<div style="display: flex; align-items: center;"> <div style="width: 5%; height: 10px; background-color: red; margin-right: 5px;"></div> <div style="width: 81%; height: 10px; background-color: green; margin-right: 5px;"></div> <div style="width: 15%; height: 10px; background-color: yellow; margin-right: 5px;"></div> <div style="width: 5%; height: 10px; background-color: grey; margin-right: 5px;"></div> </div> <p style="text-align: center; margin-top: 5px;">81% 15% ..</p>
1	B	803	<div style="display: flex; align-items: center;"> <div style="width: 3%; height: 10px; background-color: red; margin-right: 5px;"></div> <div style="width: 80%; height: 10px; background-color: green; margin-right: 5px;"></div> <div style="width: 16%; height: 10px; background-color: yellow; margin-right: 5px;"></div> <div style="width: 5%; height: 10px; background-color: grey; margin-right: 5px;"></div> </div> <p style="text-align: center; margin-top: 5px;">3% 80% 16% ..</p>
1	C	803	<div style="display: flex; align-items: center;"> <div style="width: 2%; height: 10px; background-color: red; margin-right: 5px;"></div> <div style="width: 80%; height: 10px; background-color: green; margin-right: 5px;"></div> <div style="width: 14%; height: 10px; background-color: yellow; margin-right: 5px;"></div> <div style="width: 5%; height: 10px; background-color: grey; margin-right: 5px;"></div> </div> <p style="text-align: center; margin-top: 5px;">2% 80% 14% ..</p>
1	D	803	<div style="display: flex; align-items: center;"> <div style="width: 3%; height: 10px; background-color: red; margin-right: 5px;"></div> <div style="width: 81%; height: 10px; background-color: green; margin-right: 5px;"></div> <div style="width: 14%; height: 10px; background-color: yellow; margin-right: 5px;"></div> <div style="width: 5%; height: 10px; background-color: grey; margin-right: 5px;"></div> </div> <p style="text-align: center; margin-top: 5px;">3% 81% 14% ..</p>

The following table lists non-polymeric compounds, carbohydrate monomers and non-standard

residues in protein, DNA, RNA chains that are outliers for geometric or electron-density-fit criteria:

Mol	Type	Chain	Res	Chirality	Geometry	Clashes	Electron density
2	NAG	A	901	-	-	-	X

2 Entry composition i

There are 3 unique types of molecules in this entry. The entry contains 24073 atoms, of which 0 are hydrogens and 0 are deuteriums.

In the tables below, the ZeroOcc column contains the number of atoms modelled with zero occupancy, the AltConf column contains the number of residues with at least one atom in alternate conformation and the Trace column contains the number of residues modelled with at most 2 atoms.

- Molecule 1 is a protein called Glutamate receptor 2.

Mol	Chain	Residues	Atoms					ZeroOcc	AltConf	Trace
			Total	C	N	O	S			
1	A	777	5988	3848	992	1119	29	0	0	0
1	B	773	5990	3843	989	1129	29	0	0	0
1	C	773	5952	3825	985	1114	28	0	0	0
1	D	777	5979	3840	990	1121	28	0	0	0

There are 72 discrepancies between the modelled and reference sequences:

Chain	Residue	Modelled	Actual	Comment	Reference
A	241	GLU	ASN	engineered mutation	UNP P19491
A	?	-	VAL	deletion	UNP P19491
A	?	-	THR	deletion	UNP P19491
A	?	-	LEU	deletion	UNP P19491
A	?	-	PRO	deletion	UNP P19491
A	?	-	SER	deletion	UNP P19491
A	?	-	GLY	deletion	UNP P19491
A	385	ASP	ASN	engineered mutation	UNP P19491
A	392	GLN	ASN	engineered mutation	UNP P19491
A	564	ASP	-	linker	UNP P19491
A	565	THR	-	linker	UNP P19491
A	566	ASP	-	linker	UNP P19491
A	589	ALA	CYS	engineered mutation	UNP P19491
A	827	GLY	-	cloning artifact	UNP P19491
A	828	LEU	-	cloning artifact	UNP P19491
A	829	VAL	-	cloning artifact	UNP P19491
A	830	PRO	-	cloning artifact	UNP P19491
A	831	ARG	-	cloning artifact	UNP P19491
B	241	GLU	ASN	engineered mutation	UNP P19491
B	?	-	VAL	deletion	UNP P19491
B	?	-	THR	deletion	UNP P19491

Continued on next page...

Continued from previous page...

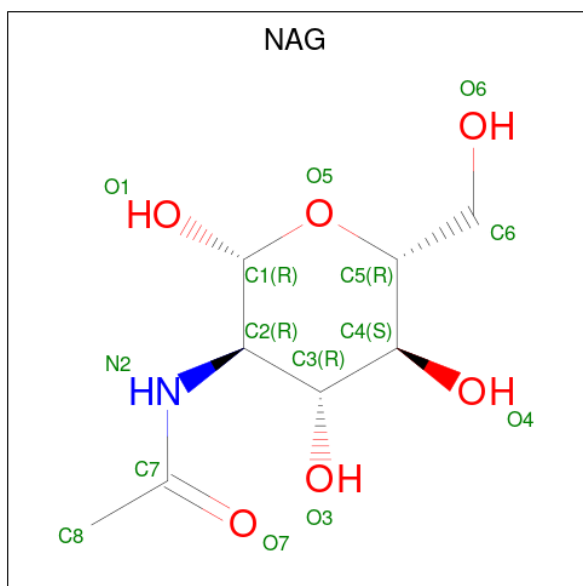
Chain	Residue	Modelled	Actual	Comment	Reference
B	?	-	LEU	deletion	UNP P19491
B	?	-	PRO	deletion	UNP P19491
B	?	-	SER	deletion	UNP P19491
B	?	-	GLY	deletion	UNP P19491
B	385	ASP	ASN	engineered mutation	UNP P19491
B	392	GLN	ASN	engineered mutation	UNP P19491
B	564	ASP	-	linker	UNP P19491
B	565	THR	-	linker	UNP P19491
B	566	ASP	-	linker	UNP P19491
B	589	ALA	CYS	engineered mutation	UNP P19491
B	827	GLY	-	cloning artifact	UNP P19491
B	828	LEU	-	cloning artifact	UNP P19491
B	829	VAL	-	cloning artifact	UNP P19491
B	830	PRO	-	cloning artifact	UNP P19491
B	831	ARG	-	cloning artifact	UNP P19491
C	241	GLU	ASN	engineered mutation	UNP P19491
C	?	-	VAL	deletion	UNP P19491
C	?	-	THR	deletion	UNP P19491
C	?	-	LEU	deletion	UNP P19491
C	?	-	PRO	deletion	UNP P19491
C	?	-	SER	deletion	UNP P19491
C	?	-	GLY	deletion	UNP P19491
C	385	ASP	ASN	engineered mutation	UNP P19491
C	392	GLN	ASN	engineered mutation	UNP P19491
C	564	ASP	-	linker	UNP P19491
C	565	THR	-	linker	UNP P19491
C	566	ASP	-	linker	UNP P19491
C	589	ALA	CYS	engineered mutation	UNP P19491
C	827	GLY	-	cloning artifact	UNP P19491
C	828	LEU	-	cloning artifact	UNP P19491
C	829	VAL	-	cloning artifact	UNP P19491
C	830	PRO	-	cloning artifact	UNP P19491
C	831	ARG	-	cloning artifact	UNP P19491
D	241	GLU	ASN	engineered mutation	UNP P19491
D	?	-	VAL	deletion	UNP P19491
D	?	-	THR	deletion	UNP P19491
D	?	-	LEU	deletion	UNP P19491
D	?	-	PRO	deletion	UNP P19491
D	?	-	SER	deletion	UNP P19491
D	?	-	GLY	deletion	UNP P19491
D	385	ASP	ASN	engineered mutation	UNP P19491
D	392	GLN	ASN	engineered mutation	UNP P19491

Continued on next page...

Continued from previous page...

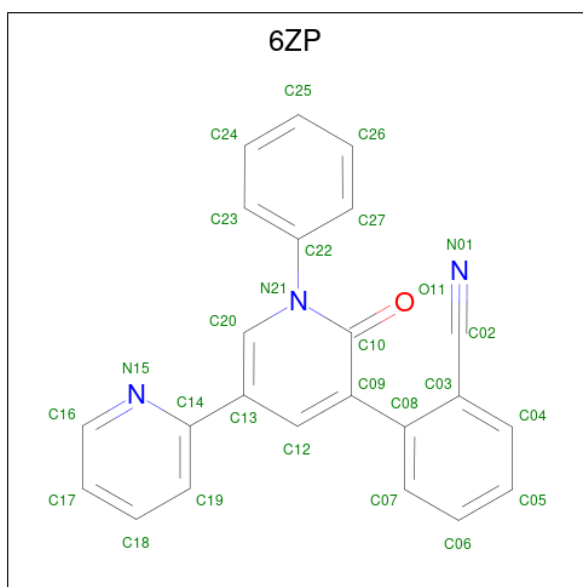
Chain	Residue	Modelled	Actual	Comment	Reference
D	564	ASP	-	linker	UNP P19491
D	565	THR	-	linker	UNP P19491
D	566	ASP	-	linker	UNP P19491
D	589	ALA	CYS	engineered mutation	UNP P19491
D	827	GLY	-	cloning artifact	UNP P19491
D	828	LEU	-	cloning artifact	UNP P19491
D	829	VAL	-	cloning artifact	UNP P19491
D	830	PRO	-	cloning artifact	UNP P19491
D	831	ARG	-	cloning artifact	UNP P19491

- Molecule 2 is 2-acetamido-2-deoxy-beta-D-glucopyranose (three-letter code: NAG) (formula: $C_8H_{15}NO_6$).



Mol	Chain	Residues	Atoms				ZeroOcc	AltConf
2	A	1	Total	C	N	O	0	0
			14	8	1	5		
2	B	1	Total	C	N	O	0	0
			14	8	1	5		
2	C	1	Total	C	N	O	0	0
			14	8	1	5		
2	D	1	Total	C	N	O	0	0
			14	8	1	5		

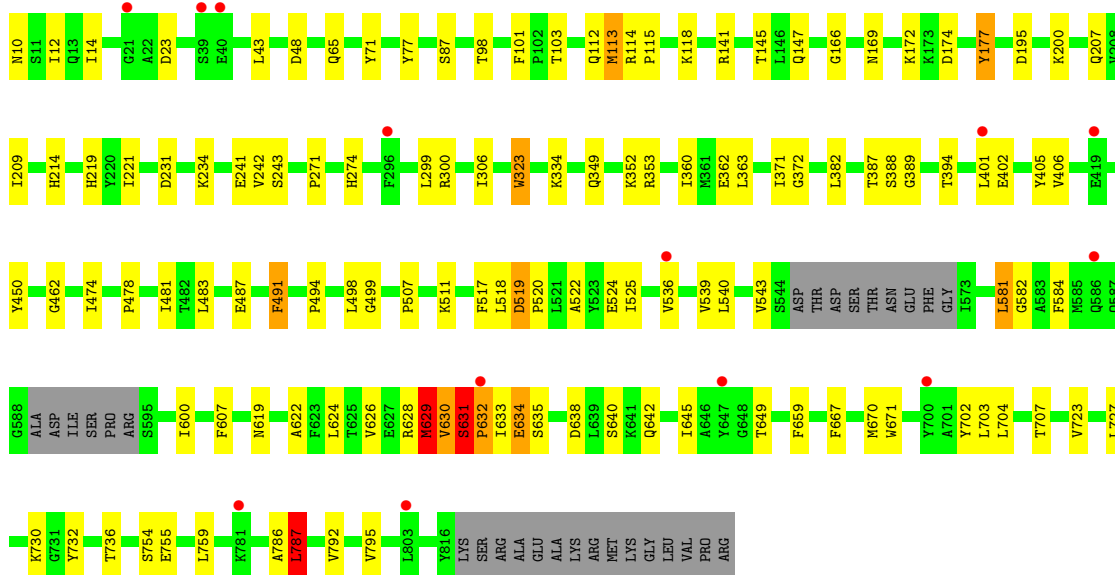
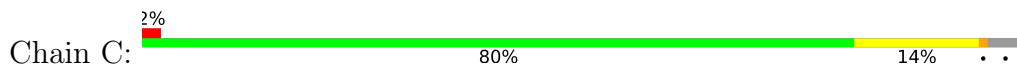
- Molecule 3 is 2-(6'-oxo-1'-phenyl[1',6'-dihydro[2,3'-bipyridine]]-5'-yl)benzotrile (three-letter code: 6ZP) (formula: $C_{23}H_{15}N_3O$).



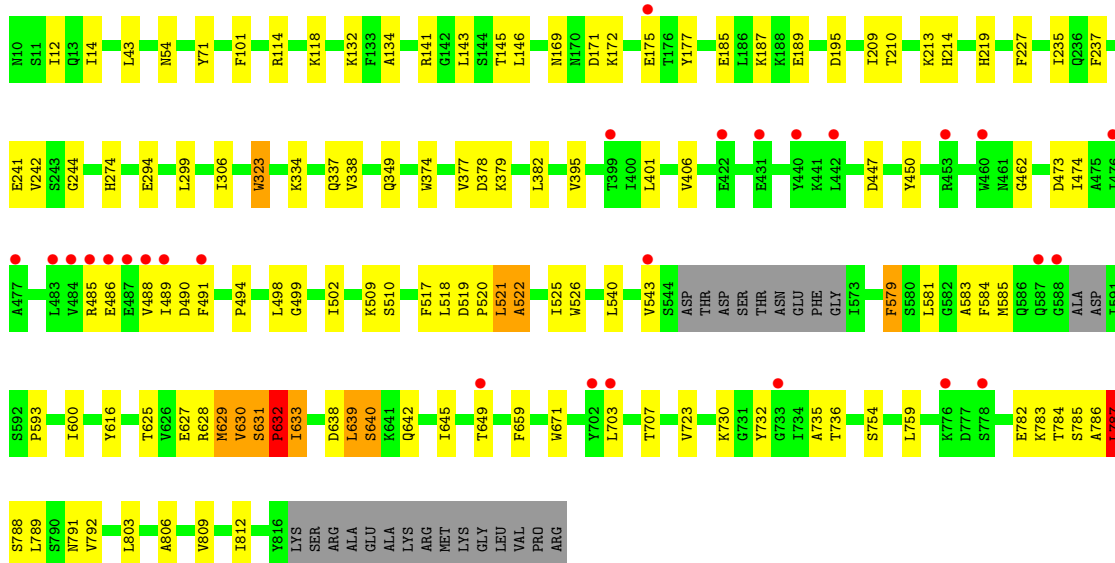
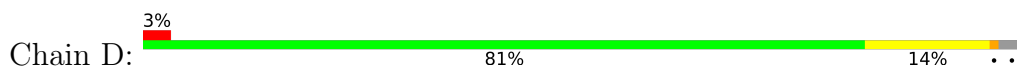
Mol	Chain	Residues	Atoms				ZeroOcc	AltConf	
			Total	C	N	O			
3	A	1	Total	27	23	3	1	0	0
3	B	1	Total	27	23	3	1	0	0
3	C	1	Total	27	23	3	1	0	0
3	D	1	Total	27	23	3	1	0	0



• Molecule 1: Glutamate receptor 2



• Molecule 1: Glutamate receptor 2



4 Data and refinement statistics

Property	Value	Source
Space group	P 21 21 21	Depositor
Cell constants a, b, c, α , β , γ	91.74Å 109.34Å 594.84Å 90.00° 90.00° 90.00°	Depositor
Resolution (Å)	49.57 – 4.00 49.57 – 4.00	Depositor EDS
% Data completeness (in resolution range)	99.4 (49.57-4.00) 99.5 (49.57-4.00)	Depositor EDS
R_{merge}	0.09	Depositor
R_{sym}	(Not available)	Depositor
$\langle I/\sigma(I) \rangle$ ¹	1.48 (at 4.00Å)	Xtrriage
Refinement program	PHENIX 1.10.1_2155	Depositor
R, R_{free}	0.237 , 0.272 0.261 , 0.287	Depositor DCC
R_{free} test set	2581 reflections (5.00%)	wwPDB-VP
Wilson B-factor (Å ²)	196.2	Xtrriage
Anisotropy	0.312	Xtrriage
Bulk solvent k_{sol} (e/Å ³), B_{sol} (Å ²)	0.26 , 178.1	EDS
L-test for twinning ²	$\langle L \rangle = 0.38$, $\langle L^2 \rangle = 0.21$	Xtrriage
Estimated twinning fraction	No twinning to report.	Xtrriage
F_o, F_c correlation	0.86	EDS
Total number of atoms	24073	wwPDB-VP
Average B, all atoms (Å ²)	239.0	wwPDB-VP

Xtrriage's analysis on translational NCS is as follows: *The largest off-origin peak in the Patterson function is 2.07% of the height of the origin peak. No significant pseudotranslation is detected.*

¹Intensities estimated from amplitudes.

²Theoretical values of $\langle |L| \rangle$, $\langle L^2 \rangle$ for acentric reflections are 0.5, 0.333 respectively for untwinned datasets, and 0.375, 0.2 for perfectly twinned datasets.

5 Model quality [i](#)

5.1 Standard geometry [i](#)

Bond lengths and bond angles in the following residue types are not validated in this section: 6ZP, NAG

The Z score for a bond length (or angle) is the number of standard deviations the observed value is removed from the expected value. A bond length (or angle) with $|Z| > 5$ is considered an outlier worth inspection. RMSZ is the root-mean-square of all Z scores of the bond lengths (or angles).

Mol	Chain	Bond lengths		Bond angles	
		RMSZ	# $ Z > 5$	RMSZ	# $ Z > 5$
1	A	0.26	1/6111 (0.0%)	0.55	10/8272 (0.1%)
1	B	0.26	1/6112 (0.0%)	0.62	9/8270 (0.1%)
1	C	0.27	0/6074	0.52	8/8225 (0.1%)
1	D	0.30	2/6102 (0.0%)	0.56	13/8263 (0.2%)
All	All	0.27	4/24399 (0.0%)	0.56	40/33030 (0.1%)

Chiral center outliers are detected by calculating the chiral volume of a chiral center and verifying if the center is modelled as a planar moiety or with the opposite hand. A planarity outlier is detected by checking planarity of atoms in a peptide group, atoms in a mainchain group or atoms of a sidechain that are expected to be planar.

Mol	Chain	#Chirality outliers	#Planarity outliers
1	A	0	1
1	C	0	1
All	All	0	2

All (4) bond length outliers are listed below:

Mol	Chain	Res	Type	Atoms	Z	Observed(Å)	Ideal(Å)
1	D	787	LEU	CA-C	7.70	1.73	1.52
1	D	632	PRO	N-CD	5.21	1.55	1.47
1	A	632	PRO	N-CD	5.15	1.55	1.47
1	B	388	SER	N-CA	5.13	1.56	1.46

All (40) bond angle outliers are listed below:

Mol	Chain	Res	Type	Atoms	Z	Observed(°)	Ideal(°)
1	B	388	SER	N-CA-CB	-19.81	80.78	110.50
1	B	452	ALA	CB-CA-C	-16.47	85.40	110.10
1	A	630	VAL	CB-CA-C	-13.05	86.60	111.40

Continued on next page...

Continued from previous page...

Mol	Chain	Res	Type	Atoms	Z	Observed(°)	Ideal(°)
1	C	630	VAL	CB-CA-C	-13.03	86.64	111.40
1	B	452	ALA	N-CA-C	12.07	143.58	111.00
1	A	524	GLU	N-CA-CB	-11.46	89.97	110.60
1	D	522	ALA	N-CA-CB	-11.28	94.31	110.10
1	A	522	ALA	CB-CA-C	-10.22	94.78	110.10
1	D	640	SER	N-CA-CB	9.27	124.41	110.50
1	A	629	MET	CB-CA-C	-9.21	91.98	110.40
1	C	629	MET	CB-CA-C	-9.20	91.99	110.40
1	B	388	SER	N-CA-C	9.06	135.47	111.00
1	B	453	ARG	N-CA-CB	-9.03	94.34	110.60
1	A	524	GLU	N-CA-C	8.94	135.14	111.00
1	B	783	LYS	N-CA-CB	-8.33	95.60	110.60
1	D	521	LEU	N-CA-C	-8.27	88.67	111.00
1	D	786	ALA	CB-CA-C	-8.16	97.86	110.10
1	B	232	LEU	CB-CA-C	-8.15	94.72	110.20
1	B	388	SER	CB-CA-C	-7.47	95.91	110.10
1	A	522	ALA	N-CA-C	7.38	130.93	111.00
1	B	387	THR	N-CA-C	7.29	130.69	111.00
1	D	518	LEU	N-CA-C	7.19	130.41	111.00
1	C	786	ALA	N-CA-C	-6.53	93.36	111.00
1	D	639	LEU	CB-CA-C	-6.47	97.91	110.20
1	C	786	ALA	CB-CA-C	-6.39	100.52	110.10
1	A	518	LEU	N-CA-CB	-6.36	97.68	110.40
1	A	517	PHE	CB-CA-C	6.09	122.59	110.40
1	C	581	LEU	CB-CA-C	-6.09	98.62	110.20
1	C	631	SER	C-N-CD	6.05	141.10	128.40
1	D	783	LYS	N-CA-C	6.02	127.26	111.00
1	D	518	LEU	N-CA-CB	-5.90	98.61	110.40
1	D	786	ALA	N-CA-C	-5.90	95.08	111.00
1	D	632	PRO	CA-N-CD	-5.75	103.45	111.50
1	C	113	MET	N-CA-CB	-5.75	100.26	110.60
1	D	787	LEU	N-CA-CB	-5.72	98.95	110.40
1	C	787	LEU	N-CA-C	5.57	126.04	111.00
1	A	518	LEU	N-CA-C	5.55	125.98	111.00
1	D	787	LEU	CB-CA-C	-5.46	99.84	110.20
1	A	516	SER	N-CA-CB	5.44	118.66	110.50
1	D	638	ASP	N-CA-C	5.09	124.75	111.00

There are no chirality outliers.

All (2) planarity outliers are listed below:

Mol	Chain	Res	Type	Group
1	A	629	MET	Peptide
1	C	629	MET	Peptide

5.2 Too-close contacts [i](#)

In the following table, the Non-H and H(model) columns list the number of non-hydrogen atoms and hydrogen atoms in the chain respectively. The H(added) column lists the number of hydrogen atoms added and optimized by MolProbity. The Clashes column lists the number of clashes within the asymmetric unit, whereas Symm-Clashes lists symmetry-related clashes.

Mol	Chain	Non-H	H(model)	H(added)	Clashes	Symm-Clashes
1	A	5988	0	5887	120	0
1	B	5990	0	5903	104	0
1	C	5952	0	5835	151	0
1	D	5979	0	5866	149	0
2	A	14	0	13	0	0
2	B	14	0	13	0	0
2	C	14	0	13	1	0
2	D	14	0	13	1	0
3	A	27	0	0	2	0
3	B	27	0	0	2	0
3	C	27	0	0	2	0
3	D	27	0	0	3	0
All	All	24073	0	23543	477	0

The all-atom clashscore is defined as the number of clashes found per 1000 atoms (including hydrogen atoms). The all-atom clashscore for this structure is 10.

All (477) close contacts within the same asymmetric unit are listed below, sorted by their clash magnitude.

Atom-1	Atom-2	Interatomic distance (Å)	Clash overlap (Å)
1:D:628:ARG:CB	1:D:630:VAL:HG22	1.33	1.58
1:D:628:ARG:CB	1:D:630:VAL:CG2	1.93	1.43
1:C:629:MET:HB2	1:C:630:VAL:CA	1.47	1.36
1:A:629:MET:HB2	1:A:630:VAL:CA	1.47	1.30
1:D:787:LEU:O	1:D:787:LEU:HD22	1.30	1.29
1:C:629:MET:CB	1:C:630:VAL:HA	1.66	1.26
1:A:629:MET:CB	1:A:630:VAL:HA	1.65	1.24
1:C:633:ILE:CG2	1:C:723:VAL:CG1	2.16	1.23
1:C:633:ILE:HG21	1:C:723:VAL:CG1	1.68	1.23
1:B:518:LEU:HD12	1:B:518:LEU:O	1.48	1.11

Continued on next page...

Continued from previous page...

Atom-1	Atom-2	Interatomic distance (Å)	Clash overlap (Å)
1:A:631:SER:HB2	1:A:632:PRO:HA	1.32	1.11
1:C:633:ILE:HG21	1:C:723:VAL:HG12	1.20	1.08
1:C:634:GLU:HG3	1:C:635:SER:H	1.17	1.08
1:C:633:ILE:HG23	1:C:723:VAL:HG11	1.34	1.06
1:A:485:ARG:HB3	1:A:491:PHE:HZ	1.20	1.05
1:C:382:LEU:O	1:C:382:LEU:HD12	1.54	1.03
1:C:633:ILE:CG2	1:C:723:VAL:HB	1.89	1.03
1:B:599:ARG:CB	1:C:581:LEU:HD11	1.89	1.02
1:D:632:PRO:O	1:D:633:ILE:O	1.80	0.99
1:C:633:ILE:CG2	1:C:723:VAL:CB	2.41	0.98
1:C:633:ILE:HG23	1:C:723:VAL:CG1	1.91	0.97
1:D:489:ILE:HG21	1:D:735:ALA:HB1	1.42	0.97
1:C:581:LEU:HA	1:C:584:PHE:HB3	1.45	0.97
1:A:631:SER:CB	1:A:632:PRO:HA	1.95	0.95
1:D:787:LEU:O	1:D:787:LEU:CD2	2.14	0.94
1:C:619:ASN:ND2	1:D:787:LEU:HB3	1.81	0.94
1:D:485:ARG:HB3	1:D:491:PHE:HZ	1.30	0.93
1:D:789:LEU:HA	1:D:792:VAL:HG13	1.52	0.91
1:A:599:ARG:O	1:B:585:MET:HE1	1.70	0.91
1:A:489:ILE:HG21	1:A:735:ALA:HB1	1.49	0.91
1:C:619:ASN:HD21	1:D:787:LEU:HB3	1.36	0.90
1:C:522:ALA:HB2	1:D:787:LEU:HD21	1.52	0.90
1:D:629:MET:HA	1:D:630:VAL:CG2	2.01	0.89
1:D:629:MET:HA	1:D:630:VAL:HG23	1.53	0.89
1:A:485:ARG:HB3	1:A:491:PHE:CZ	2.09	0.88
1:D:628:ARG:CB	1:D:630:VAL:HG21	2.03	0.88
1:C:522:ALA:CA	1:D:787:LEU:HD21	2.04	0.88
1:C:518:LEU:HD12	1:C:518:LEU:O	1.75	0.87
1:C:633:ILE:CG2	1:C:723:VAL:HG11	1.93	0.85
1:A:629:MET:CB	1:A:630:VAL:CA	2.40	0.85
1:D:791:ASN:O	1:D:791:ASN:OD1	1.95	0.84
1:D:488:VAL:HG23	1:D:489:ILE:HG12	1.58	0.83
1:C:629:MET:CB	1:C:630:VAL:CA	2.40	0.83
1:C:522:ALA:CB	1:D:787:LEU:HD21	2.08	0.82
1:C:633:ILE:HG22	1:C:723:VAL:HB	1.60	0.82
1:A:488:VAL:HG23	1:A:489:ILE:HG12	1.62	0.81
1:B:232:LEU:C	1:B:232:LEU:HD12	2.00	0.81
1:D:485:ARG:HB3	1:D:491:PHE:CZ	2.15	0.80
1:A:485:ARG:C	1:A:491:PHE:HE2	1.85	0.79
1:D:631:SER:CB	1:D:632:PRO:HA	2.14	0.78
1:B:518:LEU:O	1:B:518:LEU:CD1	2.32	0.78

Continued on next page...

Continued from previous page...

Atom-1	Atom-2	Interatomic distance (Å)	Clash overlap (Å)
1:C:371:ILE:O	1:C:382:LEU:CD2	2.31	0.77
1:D:519:ASP:O	1:D:521:LEU:O	2.02	0.77
1:C:371:ILE:O	1:C:382:LEU:HD22	1.83	0.77
1:C:581:LEU:C	1:C:581:LEU:HD12	2.05	0.76
1:D:628:ARG:N	1:D:629:MET:HB3	2.00	0.76
1:A:524:GLU:OE1	1:B:789:LEU:HD22	1.85	0.76
1:C:522:ALA:HB2	1:D:787:LEU:CD2	2.15	0.75
1:A:486:GLU:OE1	1:A:491:PHE:HD2	1.69	0.75
1:C:634:GLU:HG3	1:C:635:SER:N	1.98	0.75
1:B:451:GLY:HA2	1:B:452:ALA:HB3	1.68	0.75
1:C:522:ALA:N	1:D:787:LEU:HD21	2.01	0.74
1:D:628:ARG:CB	1:D:629:MET:HA	2.17	0.74
1:A:631:SER:HB2	1:A:632:PRO:CA	2.16	0.74
1:C:581:LEU:HA	1:C:584:PHE:CB	2.18	0.74
1:B:502:ILE:HD13	1:B:639:LEU:HD13	1.70	0.74
1:D:628:ARG:CA	1:D:630:VAL:HG22	2.18	0.74
1:C:630:VAL:O	1:C:631:SER:HB2	1.89	0.73
1:D:377:VAL:HG13	1:D:378:ASP:H	1.53	0.73
1:D:787:LEU:H	1:D:787:LEU:HD13	1.53	0.73
1:C:360:ILE:HB	1:C:372:GLY:HA3	1.71	0.73
1:A:629:MET:HB2	1:A:630:VAL:HA	0.74	0.72
1:B:649:THR:HG22	1:B:703:LEU:HB2	1.70	0.72
1:C:581:LEU:CA	1:C:584:PHE:HB3	2.18	0.72
1:C:630:VAL:O	1:C:631:SER:CB	2.37	0.72
1:C:147:GLN:HE21	1:D:143:LEU:HD21	1.53	0.72
1:D:486:GLU:OE1	1:D:491:PHE:HD2	1.72	0.72
1:D:627:GLU:CB	1:D:629:MET:HG2	2.20	0.72
1:C:629:MET:HB2	1:C:630:VAL:HA	0.74	0.71
1:D:485:ARG:C	1:D:491:PHE:HE2	1.92	0.71
1:C:630:VAL:O	1:C:630:VAL:HG22	1.90	0.71
1:A:631:SER:CB	1:A:632:PRO:CA	2.69	0.71
1:D:787:LEU:H	1:D:787:LEU:CD1	2.02	0.71
1:B:346:LYS:HG3	1:B:354:ILE:HG13	1.70	0.71
1:A:485:ARG:CB	1:A:491:PHE:HZ	2.01	0.70
1:B:494:PRO:HG3	1:C:494:PRO:HG3	1.72	0.70
1:C:525:ILE:HD11	1:D:789:LEU:HB3	1.72	0.70
1:A:630:VAL:HG22	1:A:630:VAL:O	1.90	0.70
1:A:485:ARG:CB	1:A:491:PHE:CZ	2.76	0.69
1:B:387:THR:O	1:B:387:THR:OG1	2.09	0.69
1:D:639:LEU:C	1:D:639:LEU:HD12	2.12	0.69
1:A:486:GLU:N	1:A:491:PHE:HE2	1.91	0.69

Continued on next page...

Continued from previous page...

Atom-1	Atom-2	Interatomic distance (Å)	Clash overlap (Å)
1:B:387:THR:N	1:B:388:SER:HA	2.08	0.69
1:D:632:PRO:O	1:D:633:ILE:C	2.31	0.68
1:C:649:THR:HG22	1:C:703:LEU:HB2	1.74	0.68
1:C:522:ALA:N	1:D:787:LEU:CD2	2.56	0.68
1:A:485:ARG:C	1:A:491:PHE:CE2	2.68	0.67
1:B:274:HIS:O	1:B:274:HIS:ND1	2.27	0.67
1:C:498:LEU:HD21	1:C:732:TYR:CZ	2.30	0.67
1:A:649:THR:HG22	1:A:703:LEU:HB2	1.76	0.66
1:D:628:ARG:H	1:D:629:MET:HB3	1.61	0.66
1:D:489:ILE:HG22	1:D:490:ASP:N	2.11	0.66
1:B:518:LEU:HB2	1:B:526:TRP:CD1	2.32	0.66
1:D:649:THR:HG22	1:D:703:LEU:HB2	1.77	0.66
1:C:98:THR:O	1:C:112:GLN:HA	1.95	0.65
1:C:394:THR:HG23	1:C:394:THR:O	1.94	0.65
1:D:377:VAL:HG13	1:D:378:ASP:N	2.10	0.65
1:B:474:ILE:HG13	1:B:736:THR:HG22	1.79	0.64
1:C:581:LEU:HD12	1:C:582:GLY:N	2.11	0.64
1:D:450:TYR:HA	1:D:462:GLY:HA3	1.78	0.64
1:C:147:GLN:HE21	1:D:143:LEU:CD2	2.10	0.63
1:B:633:ILE:HD13	1:B:639:LEU:HD12	1.80	0.63
1:A:619:ASN:HA	1:B:624:LEU:HD13	1.81	0.63
1:C:402:GLU:OE1	1:C:450:TYR:OH	2.15	0.63
1:D:509:LYS:N	1:D:510:SER:HB2	2.13	0.62
1:A:608:PHE:CD2	1:B:799:LEU:HD22	2.35	0.62
1:C:633:ILE:HG23	1:C:723:VAL:CB	2.24	0.62
1:D:789:LEU:HB2	1:D:792:VAL:HG22	1.82	0.62
1:B:581:LEU:O	1:B:585:MET:HE2	1.99	0.62
1:C:382:LEU:HD12	1:C:382:LEU:C	2.20	0.62
1:B:387:THR:H	1:B:388:SER:HA	1.63	0.62
1:D:502:ILE:HD13	1:D:639:LEU:CD2	2.29	0.62
1:C:519:ASP:HB2	3:C:902:6ZP:C20	2.29	0.62
1:D:581:LEU:HA	1:D:584:PHE:HB3	1.81	0.62
1:B:498:LEU:HD21	1:B:732:TYR:CZ	2.35	0.61
1:C:177:TYR:HB3	1:C:207:GLN:HG2	1.82	0.61
1:C:642:GLN:HE22	1:C:645:ILE:HB	1.65	0.61
1:A:486:GLU:HA	1:A:491:PHE:CE2	2.36	0.61
1:B:502:ILE:HD13	1:B:639:LEU:CD1	2.30	0.61
1:C:524:GLU:HB2	1:D:789:LEU:CD2	2.30	0.61
1:C:633:ILE:HG21	1:C:723:VAL:CB	2.18	0.61
1:B:232:LEU:C	1:B:232:LEU:CD1	2.69	0.61
1:C:382:LEU:O	1:C:382:LEU:CD1	2.41	0.61

Continued on next page...

Continued from previous page...

Atom-1	Atom-2	Interatomic distance (Å)	Clash overlap (Å)
1:B:510:SER:H	1:B:511:LYS:HA	1.66	0.61
1:A:523:TYR:CD2	1:A:524:GLU:HG3	2.36	0.60
1:B:26:TYR:HE1	1:B:47:ILE:HG12	1.66	0.60
1:D:169:ASN:ND2	1:D:171:ASP:OD1	2.35	0.60
1:A:489:ILE:HG22	1:A:490:ASP:N	2.15	0.60
1:D:485:ARG:CB	1:D:491:PHE:CZ	2.84	0.60
1:D:629:MET:HA	1:D:630:VAL:HG22	1.80	0.60
1:A:299:LEU:HD13	1:A:306:ILE:HG21	1.82	0.60
1:C:12:ILE:HG23	1:C:71:TYR:HD2	1.67	0.60
1:B:177:TYR:HB3	1:B:207:GLN:HG2	1.84	0.60
1:C:101:PHE:HA	1:C:114:ARG:HD2	1.84	0.60
1:D:628:ARG:N	1:D:629:MET:CB	2.65	0.59
1:C:498:LEU:CD1	1:C:730:LYS:HD2	2.33	0.59
1:D:143:LEU:HD23	1:D:146:LEU:HD23	1.84	0.59
1:B:260:GLU:O	1:B:264:THR:OG1	2.19	0.59
1:C:522:ALA:H	1:C:525:ILE:HD12	1.67	0.59
1:C:112:GLN:NE2	1:C:352:LYS:HD3	2.17	0.59
1:C:634:GLU:CG	1:C:635:SER:H	2.01	0.59
1:C:299:LEU:HD13	1:C:306:ILE:HG21	1.85	0.58
1:D:632:PRO:C	1:D:633:ILE:O	2.40	0.58
1:D:519:ASP:C	1:D:521:LEU:O	2.41	0.58
1:C:474:ILE:HG13	1:C:736:THR:HG22	1.84	0.58
1:B:447:ASP:N	1:B:448:GLY:HA2	2.18	0.58
1:C:141:ARG:NH2	1:C:195:ASP:OD1	2.36	0.58
1:A:362:GLU:HG3	1:A:371:ILE:HG21	1.85	0.58
1:D:374:TRP:CD1	1:D:379:LYS:O	2.57	0.58
1:C:640:SER:HB3	1:C:670:MET:HG2	1.86	0.57
1:B:582:GLY:HA2	1:B:585:MET:HE2	1.86	0.57
1:C:632:PRO:HG2	1:C:633:ILE:HD12	1.86	0.57
1:B:385:ASP:OD1	1:B:386:ASP:N	2.37	0.57
1:B:582:GLY:HA2	1:B:585:MET:CE	2.35	0.56
1:A:474:ILE:HG13	1:A:736:THR:HG22	1.88	0.56
1:C:498:LEU:HD11	1:C:730:LYS:CD	2.35	0.56
1:C:619:ASN:ND2	1:D:787:LEU:CB	2.64	0.56
1:B:14:ILE:HD13	1:B:292:MET:HE1	1.87	0.56
1:D:377:VAL:HG13	1:D:378:ASP:OD1	2.04	0.56
1:C:371:ILE:O	1:C:382:LEU:HD23	2.05	0.56
1:B:11:SER:OG	1:B:44:THR:OG1	2.23	0.56
1:B:599:ARG:CA	1:C:581:LEU:HD11	2.36	0.56
1:D:629:MET:N	1:D:630:VAL:HA	2.21	0.56
1:A:14:ILE:HD13	1:A:43:LEU:HD23	1.88	0.56

Continued on next page...

Continued from previous page...

Atom-1	Atom-2	Interatomic distance (Å)	Clash overlap (Å)
1:D:631:SER:HB2	1:D:632:PRO:HA	1.88	0.56
1:A:103:THR:O	1:A:352:LYS:NZ	2.37	0.56
1:B:639:LEU:HD21	1:B:647:TYR:CG	2.40	0.56
1:C:219:HIS:HD2	1:C:241:GLU:O	1.89	0.56
1:D:631:SER:HB2	1:D:632:PRO:CA	2.36	0.56
1:A:71:TYR:HA	1:A:323:TRP:HH2	1.71	0.56
1:C:522:ALA:HB3	1:C:525:ILE:HG13	1.86	0.55
1:D:502:ILE:HD13	1:D:639:LEU:HD23	1.86	0.55
1:B:508:GLN:N	1:B:509:LYS:HA	2.21	0.55
1:C:581:LEU:C	1:C:581:LEU:CD1	2.74	0.55
1:A:118:LYS:HG2	1:A:145:THR:HG22	1.89	0.55
1:A:358:ILE:HD12	1:A:374:TRP:HE1	1.71	0.55
1:A:449:LYS:HD3	1:A:461:ASN:HB2	1.89	0.55
1:C:630:VAL:CG1	1:C:631:SER:N	2.64	0.55
1:D:631:SER:CB	1:D:632:PRO:CA	2.85	0.55
1:D:489:ILE:CG2	1:D:735:ALA:HB1	2.29	0.54
1:D:498:LEU:HD21	1:D:732:TYR:CZ	2.42	0.54
1:A:642:GLN:HE22	1:A:645:ILE:HB	1.72	0.54
1:A:372:GLY:HA2	1:A:382:LEU:HB3	1.90	0.54
1:B:483:LEU:N	1:C:755:GLU:OE2	2.37	0.54
1:C:630:VAL:HG13	1:C:631:SER:N	2.11	0.54
1:C:634:GLU:HG2	1:C:638:ASP:HB2	1.88	0.54
1:D:784:THR:HA	1:D:785:SER:HB3	1.90	0.54
1:C:540:LEU:HA	1:C:543:VAL:HG22	1.89	0.54
1:D:628:ARG:CB	1:D:630:VAL:HG23	2.21	0.54
2:C:901:NAG:H83	2:C:901:NAG:H3	1.89	0.54
1:A:659:PHE:HB3	1:A:671:TRP:HB2	1.90	0.54
1:C:754:SER:HB2	1:C:759:LEU:HD12	1.90	0.54
1:D:628:ARG:C	1:D:630:VAL:HG22	2.28	0.54
1:A:486:GLU:CA	1:A:491:PHE:HE2	2.21	0.54
1:C:169:ASN:HD21	1:C:172:LYS:HD3	1.72	0.54
1:A:177:TYR:CD2	1:A:207:GLN:HG3	2.43	0.53
1:C:600:ILE:HD11	1:D:806:ALA:HA	1.90	0.53
1:D:474:ILE:HG13	1:D:736:THR:HG22	1.90	0.53
1:A:515:PHE:O	1:A:515:PHE:CD2	2.62	0.53
1:C:14:ILE:HD13	1:C:43:LEU:HD23	1.90	0.53
1:D:141:ARG:NH2	1:D:195:ASP:OD1	2.40	0.53
1:D:789:LEU:HA	1:D:792:VAL:CG1	2.31	0.53
1:B:517:PHE:O	3:B:902:6ZP:C18	2.56	0.53
1:D:498:LEU:HB3	1:D:707:THR:HG23	1.91	0.53
1:A:494:PRO:HG3	1:D:494:PRO:HG3	1.90	0.53

Continued on next page...

Continued from previous page...

Atom-1	Atom-2	Interatomic distance (Å)	Clash overlap (Å)
1:D:485:ARG:C	1:D:491:PHE:CE2	2.78	0.53
1:B:498:LEU:HB3	1:B:707:THR:HG23	1.89	0.53
1:A:599:ARG:HA	1:B:585:MET:HE3	1.91	0.52
1:D:517:PHE:HA	3:D:902:6ZP:C18	2.39	0.52
1:D:540:LEU:HA	1:D:543:VAL:HG22	1.91	0.52
1:A:536:VAL:HG22	1:B:803:LEU:HD21	1.91	0.52
1:C:498:LEU:HB3	1:C:707:THR:HG23	1.89	0.52
1:C:518:LEU:O	1:C:518:LEU:CD1	2.53	0.52
1:D:377:VAL:CG1	1:D:378:ASP:H	2.20	0.52
1:A:209:ILE:HA	1:A:214:HIS:CD2	2.44	0.52
1:A:498:LEU:HD12	1:A:730:LYS:HG3	1.91	0.52
1:C:362:GLU:HG3	1:C:371:ILE:HG21	1.91	0.52
1:C:607:PHE:HE1	1:D:584:PHE:HZ	1.56	0.52
1:B:659:PHE:HB3	1:B:671:TRP:HB2	1.91	0.52
1:D:209:ILE:HA	1:D:214:HIS:CD2	2.45	0.52
1:A:221:ILE:HG12	1:A:243:SER:HB2	1.92	0.52
1:A:274:HIS:O	1:A:274:HIS:CG	2.63	0.52
1:C:112:GLN:HE21	1:C:352:LYS:HD3	1.73	0.51
1:A:515:PHE:O	1:A:515:PHE:CG	2.63	0.51
1:D:337:GLN:NE2	2:D:901:NAG:O7	2.41	0.51
1:A:517:PHE:O	3:A:902:6ZP:C18	2.58	0.51
1:C:87:SER:OG	1:D:54:ASN:OD1	2.29	0.51
1:A:135:TYR:CE1	1:A:137:TYR:HB3	2.46	0.51
1:B:427:ASP:OD2	1:B:766:TRP:NE1	2.37	0.51
1:C:498:LEU:CD1	1:C:730:LYS:CD	2.88	0.51
1:A:124:LEU:HD13	1:A:360:ILE:HD13	1.92	0.51
1:C:450:TYR:O	1:C:462:GLY:HA3	2.11	0.51
1:D:12:ILE:HG23	1:D:71:TYR:HD2	1.75	0.51
1:A:630:VAL:HG13	1:A:631:SER:N	2.15	0.51
1:D:486:GLU:N	1:D:491:PHE:HE2	2.09	0.51
1:D:489:ILE:CG2	1:D:490:ASP:N	2.74	0.51
1:A:742:LEU:O	1:A:742:LEU:HD12	2.11	0.51
1:C:498:LEU:CD2	1:C:732:TYR:CZ	2.94	0.51
1:D:382:LEU:HD12	1:D:382:LEU:C	2.32	0.50
1:D:498:LEU:CD1	1:D:730:LYS:HD2	2.41	0.50
1:B:540:LEU:HA	1:B:543:VAL:HG22	1.94	0.50
1:D:299:LEU:HD13	1:D:306:ILE:HG21	1.92	0.50
1:A:630:VAL:O	1:A:631:SER:CB	2.60	0.50
1:B:12:ILE:HG23	1:B:71:TYR:HD2	1.77	0.50
1:D:789:LEU:HD12	1:D:789:LEU:C	2.32	0.50
1:A:754:SER:HB2	1:A:759:LEU:HD12	1.92	0.50

Continued on next page...

Continued from previous page...

Atom-1	Atom-2	Interatomic distance (Å)	Clash overlap (Å)
1:B:517:PHE:C	3:B:902:6ZP:C18	2.80	0.50
1:D:101:PHE:HA	1:D:114:ARG:HD2	1.94	0.50
1:B:508:GLN:H	1:B:509:LYS:HA	1.77	0.49
1:C:498:LEU:HD12	1:C:730:LYS:HG3	1.94	0.49
1:C:626:VAL:HG11	1:D:782:GLU:O	2.12	0.49
1:D:629:MET:CA	1:D:630:VAL:CG2	2.82	0.49
1:A:525:ILE:HG12	1:B:792:VAL:HG21	1.94	0.49
1:B:498:LEU:HD12	1:B:730:LYS:HG3	1.94	0.49
1:C:166:GLY:HA2	1:C:200:LYS:HE2	1.94	0.49
1:B:642:GLN:HE22	1:B:645:ILE:HB	1.78	0.49
1:B:227:PHE:CD1	1:B:244:GLY:HA3	2.48	0.49
1:A:539:VAL:HG21	1:B:803:LEU:HD22	1.93	0.49
1:B:754:SER:HB2	1:B:759:LEU:HD12	1.95	0.49
1:C:388:SER:H	1:C:389:GLY:HA2	1.76	0.49
1:D:71:TYR:HA	1:D:323:TRP:HH2	1.78	0.49
1:A:498:LEU:HB3	1:A:707:THR:HG23	1.95	0.49
1:A:294:GLU:HG3	1:A:338:VAL:HG11	1.95	0.48
1:C:23:ASP:HB3	1:C:271:PRO:HG2	1.95	0.48
1:C:387:THR:HA	1:C:388:SER:HA	1.55	0.48
1:A:540:LEU:HA	1:A:543:VAL:HG22	1.95	0.48
1:A:454:ASP:OD1	1:A:455:ALA:N	2.46	0.48
1:B:232:LEU:HD12	1:B:232:LEU:O	2.13	0.48
1:B:237:PHE:HB2	1:D:210:THR:HG22	1.95	0.48
1:C:48:ASP:OD1	1:C:65:GLN:NE2	2.46	0.48
1:A:177:TYR:HD2	1:A:207:GLN:HG3	1.78	0.48
1:B:288:ALA:O	1:B:292:MET:HG3	2.14	0.48
1:B:498:LEU:HD12	1:B:499:GLY:N	2.28	0.48
1:D:498:LEU:HD11	1:D:730:LYS:HD2	1.95	0.48
1:D:787:LEU:CD1	1:D:787:LEU:N	2.73	0.48
1:A:608:PHE:CG	1:B:799:LEU:HD22	2.49	0.48
1:A:486:GLU:OE1	1:A:491:PHE:CD2	2.59	0.48
1:B:20:ARG:HG3	1:B:21:GLY:N	2.29	0.48
1:C:622:ALA:O	1:C:626:VAL:HG23	2.14	0.48
1:D:521:LEU:HB2	1:D:526:TRP:NE1	2.29	0.48
1:A:489:ILE:CG2	1:A:490:ASP:N	2.78	0.47
1:C:498:LEU:HD11	1:C:730:LYS:HD2	1.96	0.47
1:D:639:LEU:HD12	1:D:640:SER:N	2.29	0.47
1:A:516:SER:O	1:A:518:LEU:N	2.47	0.47
1:A:498:LEU:CD1	1:A:730:LYS:HG3	2.44	0.47
1:C:77:TYR:HE2	1:C:98:THR:HG21	1.80	0.47
1:D:274:HIS:CG	1:D:274:HIS:O	2.67	0.47

Continued on next page...

Continued from previous page...

Atom-1	Atom-2	Interatomic distance (Å)	Clash overlap (Å)
1:B:444:ILE:HG22	1:B:446:GLY:H	1.80	0.47
1:C:103:THR:O	1:C:352:LYS:NZ	2.46	0.47
1:D:294:GLU:HG3	1:D:338:VAL:HG11	1.95	0.47
1:C:10:ASN:HB3	1:C:300:ARG:HH22	1.79	0.47
1:D:377:VAL:CG1	1:D:378:ASP:N	2.77	0.47
1:B:386:ASP:OD1	1:B:386:ASP:O	2.32	0.47
1:B:498:LEU:CD2	1:B:732:TYR:CE2	2.98	0.47
1:A:115:PRO:HA	1:A:353:ARG:HB2	1.98	0.46
1:C:632:PRO:CG	1:C:633:ILE:H	2.27	0.46
1:D:14:ILE:HD13	1:D:43:LEU:HD23	1.97	0.46
1:D:498:LEU:HD11	1:D:730:LYS:CD	2.45	0.46
1:A:120:ALA:HB2	1:A:374:TRP:NE1	2.30	0.46
1:B:274:HIS:O	1:B:274:HIS:CG	2.68	0.46
1:B:401:LEU:HD23	1:B:406:VAL:HG12	1.98	0.46
1:B:417:GLY:O	1:B:420:ARG:NE	2.46	0.46
1:C:481:ILE:HA	1:C:491:PHE:CE2	2.50	0.46
1:A:486:GLU:CA	1:A:491:PHE:CE2	2.98	0.46
1:B:14:ILE:O	1:B:45:PRO:HA	2.16	0.46
1:A:219:HIS:HA	1:A:241:GLU:O	2.15	0.46
1:B:294:GLU:HG3	1:B:338:VAL:HG11	1.98	0.46
1:C:174:ASP:OD1	1:C:207:GLN:NE2	2.49	0.46
1:C:524:GLU:HB2	1:D:789:LEU:HD21	1.96	0.46
1:A:449:LYS:HB2	1:A:462:GLY:HA2	1.98	0.46
1:A:630:VAL:CG1	1:A:631:SER:N	2.68	0.46
1:D:134:ALA:HB2	1:D:189:GLU:HG2	1.98	0.46
1:D:334:LYS:NZ	1:D:349:GLN:O	2.32	0.46
1:C:517:PHE:CE1	1:C:795:VAL:HG22	2.51	0.46
1:D:789:LEU:HB2	1:D:792:VAL:CG2	2.44	0.46
1:C:242:VAL:HB	1:C:363:LEU:HB3	1.98	0.46
1:B:66:PHE:CZ	1:B:312:ALA:HB1	2.51	0.46
1:D:486:GLU:HA	1:D:491:PHE:CE2	2.51	0.46
1:C:522:ALA:H	1:D:787:LEU:CD2	2.27	0.46
1:C:634:GLU:CG	1:C:638:ASP:HB2	2.46	0.46
1:C:118:LYS:HG2	1:C:145:THR:HG22	1.97	0.45
1:C:274:HIS:CG	1:C:274:HIS:O	2.68	0.45
1:A:123:SER:O	1:A:127:TYR:N	2.49	0.45
1:A:524:GLU:OE1	1:B:789:LEU:CD2	2.60	0.45
1:B:219:HIS:HA	1:B:241:GLU:O	2.17	0.45
1:C:659:PHE:HB3	1:C:671:TRP:HB2	1.98	0.45
1:D:639:LEU:C	1:D:639:LEU:CD1	2.80	0.45
1:A:485:ARG:O	1:A:491:PHE:CE2	2.69	0.45

Continued on next page...

Continued from previous page...

Atom-1	Atom-2	Interatomic distance (Å)	Clash overlap (Å)
1:A:498:LEU:HD11	1:A:730:LYS:CD	2.46	0.45
1:A:792:VAL:HG21	1:D:525:ILE:HG12	1.97	0.45
1:A:383:THR:HA	1:A:384:GLU:HA	1.64	0.45
1:C:494:PRO:HA	1:C:732:TYR:O	2.17	0.45
1:C:517:PHE:HE1	1:C:795:VAL:HG22	1.81	0.45
1:B:225:LEU:HB2	1:B:280:TYR:CD2	2.52	0.45
1:D:522:ALA:HB3	1:D:525:ILE:HD12	1.99	0.45
1:D:227:PHE:CD2	1:D:244:GLY:HA3	2.52	0.45
1:A:523:TYR:HD2	1:A:524:GLU:HG3	1.79	0.45
1:C:394:THR:O	1:C:394:THR:CG2	2.63	0.45
1:A:219:HIS:HD2	1:A:241:GLU:O	2.00	0.45
1:A:291:VAL:HA	1:A:336:VAL:HG11	1.98	0.45
1:A:498:LEU:HD21	1:A:732:TYR:CZ	2.52	0.45
1:D:521:LEU:HD13	1:D:616:TYR:HD2	1.80	0.45
1:B:507:PRO:N	1:B:508:GLN:HA	2.32	0.44
1:C:112:GLN:OE1	1:C:112:GLN:N	2.44	0.44
1:C:536:VAL:HG22	1:D:803:LEU:HD21	1.98	0.44
1:C:634:GLU:HG2	1:C:638:ASP:CB	2.47	0.44
1:D:788:SER:HB2	3:D:902:6ZP:C06	2.47	0.44
1:A:489:ILE:HG21	1:A:735:ALA:CB	2.35	0.44
1:C:219:HIS:HA	1:C:241:GLU:O	2.17	0.44
1:D:502:ILE:HB	1:D:723:VAL:HG23	2.00	0.44
1:C:498:LEU:HD12	1:C:730:LYS:CG	2.48	0.44
1:C:522:ALA:N	1:D:787:LEU:HD23	2.32	0.44
1:D:395:VAL:HG13	1:D:473:ASP:HB2	1.99	0.44
1:A:101:PHE:HA	1:A:114:ARG:HD2	1.99	0.44
1:A:522:ALA:O	1:A:523:TYR:C	2.56	0.44
1:C:98:THR:HG23	1:C:112:GLN:HA	1.99	0.44
1:C:632:PRO:CD	1:C:633:ILE:H	2.30	0.44
1:C:401:LEU:HD23	1:C:406:VAL:HG12	1.99	0.44
1:D:659:PHE:HB3	1:D:671:TRP:HB2	1.99	0.44
1:D:754:SER:HB2	1:D:759:LEU:HD12	1.98	0.44
1:A:474:ILE:HD12	1:A:742:LEU:HD13	1.99	0.43
1:B:20:ARG:HG3	1:B:21:GLY:H	1.83	0.43
1:B:118:LYS:HB3	1:B:145:THR:HG22	2.00	0.43
1:D:520:PRO:C	1:D:521:LEU:O	2.49	0.43
1:A:529:ILE:HD13	1:A:612:ILE:HD12	2.00	0.43
1:B:667:PHE:HE1	1:B:727:LEU:HD13	1.81	0.43
1:C:522:ALA:H	1:D:787:LEU:HD23	1.82	0.43
1:D:494:PRO:HA	1:D:732:TYR:O	2.18	0.43
1:B:498:LEU:CD1	1:B:730:LYS:HG3	2.49	0.43

Continued on next page...

Continued from previous page...

Atom-1	Atom-2	Interatomic distance (Å)	Clash overlap (Å)
1:A:486:GLU:HA	1:A:491:PHE:HE2	1.75	0.43
1:C:112:GLN:NE2	1:C:352:LYS:HA	2.34	0.43
1:A:629:MET:SD	1:A:630:VAL:HA	2.59	0.43
1:B:299:LEU:HD13	1:B:306:ILE:HG21	2.01	0.43
1:B:517:PHE:CE1	1:B:795:VAL:HG22	2.54	0.43
1:C:221:ILE:HG12	1:C:243:SER:HB2	2.01	0.43
1:A:464:VAL:HG13	1:A:489:ILE:HG13	2.01	0.43
1:B:118:LYS:HE2	1:B:148:ALA:HB2	2.01	0.43
1:D:118:LYS:HG2	1:D:145:THR:HG22	2.01	0.43
1:B:178:ARG:HD3	1:B:211:ILE:HG22	2.01	0.42
1:C:520:PRO:HD3	3:C:902:6ZP:C20	2.49	0.42
1:C:667:PHE:HE1	1:C:727:LEU:HD13	1.84	0.42
1:D:579:PHE:O	1:D:583:ALA:N	2.46	0.42
1:A:667:PHE:HE1	1:A:727:LEU:HD13	1.83	0.42
1:B:525:ILE:HG12	1:C:792:VAL:HG21	2.01	0.42
1:C:71:TYR:HA	1:C:323:TRP:HH2	1.83	0.42
1:C:231:ASP:HB3	1:C:234:LYS:HE2	2.02	0.42
1:A:379:LYS:O	1:A:379:LYS:HG3	2.19	0.42
1:B:97:ILE:HG12	1:B:111:ILE:HB	2.01	0.42
1:B:405:TYR:CD1	1:B:478:PRO:HG3	2.55	0.42
1:D:132:LYS:NZ	1:D:187:LYS:HB3	2.34	0.42
1:A:507:PRO:HA	1:A:508:GLN:CB	2.50	0.42
1:B:520:PRO:O	1:C:787:LEU:HB2	2.19	0.42
1:B:728:ASP:OD1	1:B:728:ASP:N	2.52	0.42
1:C:581:LEU:HA	1:C:584:PHE:H	1.84	0.42
1:A:231:ASP:HB3	1:A:234:LYS:HE2	2.01	0.42
1:D:219:HIS:HA	1:D:241:GLU:O	2.19	0.42
1:A:486:GLU:N	1:A:491:PHE:CE2	2.80	0.42
1:A:608:PHE:HD1	1:B:795:VAL:HG12	1.84	0.42
1:B:210:THR:HG22	1:D:237:PHE:HB2	2.01	0.42
1:C:628:ARG:O	1:C:629:MET:C	2.58	0.42
1:D:522:ALA:O	1:D:526:TRP:HD1	2.01	0.42
1:A:514:VAL:O	1:A:514:VAL:HG22	2.20	0.42
1:B:498:LEU:HD23	1:B:707:THR:HG21	2.02	0.42
1:C:382:LEU:C	1:C:382:LEU:CD1	2.87	0.42
1:C:498:LEU:HD12	1:C:499:GLY:N	2.34	0.42
1:D:520:PRO:HD3	3:D:902:6ZP:C19	2.50	0.42
1:A:125:ILE:HG23	1:A:130:TRP:HB2	2.02	0.42
1:C:388:SER:N	1:C:389:GLY:HA2	2.34	0.42
1:C:629:MET:SD	1:C:630:VAL:HA	2.59	0.42
1:D:172:LYS:NZ	1:D:175:GLU:OE1	2.52	0.42

Continued on next page...

Continued from previous page...

Atom-1	Atom-2	Interatomic distance (Å)	Clash overlap (Å)
1:A:401:LEU:HD23	1:A:406:VAL:HG12	2.02	0.42
1:D:642:GLN:HE22	1:D:645:ILE:HB	1.85	0.42
1:D:809:VAL:HA	1:D:812:ILE:HG12	2.02	0.42
1:A:255:VAL:O	1:A:259:ILE:HG12	2.20	0.41
1:B:346:LYS:HE3	1:B:355:ASN:HD22	1.85	0.41
1:B:619:ASN:HA	1:C:624:LEU:HD13	2.02	0.41
1:D:498:LEU:HD12	1:D:730:LYS:HG3	2.01	0.41
1:A:517:PHE:HE1	1:A:795:VAL:HG22	1.85	0.41
1:B:405:TYR:HB3	1:B:425:CYS:SG	2.60	0.41
1:C:702:TYR:CE2	1:C:704:LEU:HB3	2.55	0.41
1:D:447:ASP:OD1	1:D:447:ASP:N	2.53	0.41
1:B:404:PRO:HB3	1:B:711:TYR:CE1	2.55	0.41
1:B:481:ILE:HA	1:B:491:PHE:CE2	2.55	0.41
1:A:486:GLU:HA	1:A:491:PHE:CD2	2.54	0.41
1:A:596:LEU:HD12	1:A:596:LEU:HA	1.80	0.41
1:B:332:ALA:O	1:B:336:VAL:HG23	2.20	0.41
1:C:405:TYR:CD2	1:C:478:PRO:HG3	2.56	0.41
1:D:171:ASP:OD1	1:D:172:LYS:N	2.49	0.41
1:D:185:GLU:OE1	1:D:213:LYS:NZ	2.40	0.41
1:D:632:PRO:O	1:D:632:PRO:HD2	2.20	0.41
1:A:619:ASN:HA	1:B:624:LEU:CD1	2.49	0.41
1:A:640:SER:HB3	1:A:670:MET:HG2	2.02	0.41
1:C:115:PRO:HA	1:C:353:ARG:HB2	2.02	0.41
1:D:485:ARG:O	1:D:491:PHE:HE2	2.01	0.41
1:A:30:ARG:HD2	1:A:270:TYR:CE2	2.55	0.41
1:A:517:PHE:HA	3:A:902:6ZP:C18	2.51	0.41
1:B:48:ASP:OD1	1:B:65:GLN:NE2	2.54	0.41
1:C:98:THR:O	1:C:113:MET:N	2.45	0.41
1:C:334:LYS:NZ	1:C:349:GLN:O	2.39	0.41
1:D:502:ILE:HD13	1:D:639:LEU:HD21	2.00	0.41
1:A:227:PHE:CD1	1:A:244:GLY:HA3	2.55	0.41
1:B:500:ILE:HD12	1:B:655:THR:HG23	2.03	0.41
1:A:153:ALA:HA	1:A:158:TRP:HB2	2.02	0.41
1:D:498:LEU:HD12	1:D:499:GLY:N	2.35	0.41
1:A:483:LEU:O	1:A:487:GLU:HG3	2.21	0.41
1:A:494:PRO:HA	1:A:732:TYR:O	2.21	0.41
1:A:498:LEU:HD12	1:A:498:LEU:C	2.41	0.41
1:C:209:ILE:HA	1:C:214:HIS:CD2	2.56	0.41
1:C:633:ILE:O	1:C:634:GLU:O	2.39	0.41
1:A:395:VAL:N	1:A:439:LYS:O	2.51	0.41
1:C:483:LEU:O	1:C:487:GLU:HG3	2.21	0.41

Continued on next page...

Continued from previous page...

Atom-1	Atom-2	Interatomic distance (Å)	Clash overlap (Å)
1:D:235:ILE:HD12	1:D:242:VAL:HG21	2.03	0.41
1:D:521:LEU:HB3	1:D:525:ILE:HB	2.03	0.41
1:B:13:GLN:H	1:B:13:GLN:HG2	1.66	0.40
1:B:219:HIS:HD2	1:B:241:GLU:O	2.04	0.40
1:B:702:TYR:CE2	1:B:704:LEU:HB3	2.56	0.40
1:C:622:ALA:HA	1:D:625:THR:HG22	2.04	0.40
1:A:74:PHE:CZ	1:A:285:THR:HG23	2.57	0.40
1:A:498:LEU:HD12	1:A:730:LYS:CG	2.51	0.40
1:A:806:ALA:HA	1:D:600:ILE:HD11	2.03	0.40
1:B:507:PRO:CD	1:B:508:GLN:HA	2.52	0.40
1:B:683:VAL:HG11	1:B:689:GLY:HA2	2.03	0.40
1:B:708:MET:O	1:B:712:ILE:HG12	2.21	0.40
1:D:498:LEU:HD23	1:D:707:THR:HG21	2.04	0.40
1:A:498:LEU:CD1	1:A:730:LYS:HD2	2.52	0.40
1:C:539:VAL:HG21	1:D:803:LEU:HD22	2.03	0.40
1:D:401:LEU:HD23	1:D:406:VAL:HG12	2.04	0.40

There are no symmetry-related clashes.

5.3 Torsion angles [i](#)

5.3.1 Protein backbone [i](#)

In the following table, the Percentiles column shows the percent Ramachandran outliers of the chain as a percentile score with respect to all X-ray entries followed by that with respect to entries of similar resolution.

The Analysed column shows the number of residues for which the backbone conformation was analysed, and the total number of residues.

Mol	Chain	Analysed	Favoured	Allowed	Outliers	Percentiles	
1	A	771/803 (96%)	715 (93%)	52 (7%)	4 (0%)	29	67
1	B	767/803 (96%)	708 (92%)	55 (7%)	4 (0%)	29	67
1	C	767/803 (96%)	718 (94%)	43 (6%)	6 (1%)	19	58
1	D	771/803 (96%)	718 (93%)	49 (6%)	4 (0%)	29	67
All	All	3076/3212 (96%)	2859 (93%)	199 (6%)	18 (1%)	25	63

All (18) Ramachandran outliers are listed below:

Mol	Chain	Res	Type
1	C	631	SER
1	C	632	PRO
1	C	634	GLU
1	D	633	ILE
1	D	630	VAL
1	A	512	PRO
1	A	517	PHE
1	A	631	SER
1	B	520	PRO
1	B	780	SER
1	A	520	PRO
1	B	517	PHE
1	C	519	ASP
1	B	519	ASP
1	C	507	PRO
1	D	593	PRO
1	C	511	LYS
1	D	632	PRO

5.3.2 Protein sidechains [i](#)

In the following table, the Percentiles column shows the percent sidechain outliers of the chain as a percentile score with respect to all X-ray entries followed by that with respect to entries of similar resolution.

The Analysed column shows the number of residues for which the sidechain conformation was analysed, and the total number of residues.

Mol	Chain	Analysed	Rotameric	Outliers	Percentiles	
1	A	628/683 (92%)	622 (99%)	6 (1%)	76	86
1	B	635/683 (93%)	631 (99%)	4 (1%)	86	92
1	C	622/683 (91%)	617 (99%)	5 (1%)	81	89
1	D	626/683 (92%)	619 (99%)	7 (1%)	73	85
All	All	2511/2732 (92%)	2489 (99%)	22 (1%)	78	88

All (22) residues with a non-rotameric sidechain are listed below:

Mol	Chain	Res	Type
1	A	112	GLN
1	A	177	TYR
1	A	323	TRP
1	A	450	TYR

Continued on next page...

Continued from previous page...

Mol	Chain	Res	Type
1	A	585	MET
1	A	639	LEU
1	B	323	TRP
1	B	450	TYR
1	B	491	PHE
1	B	630	VAL
1	C	177	TYR
1	C	323	TRP
1	C	491	PHE
1	C	631	SER
1	C	787	LEU
1	D	177	TYR
1	D	323	TRP
1	D	579	PHE
1	D	585	MET
1	D	629	MET
1	D	631	SER
1	D	787	LEU

Sometimes sidechains can be flipped to improve hydrogen bonding and reduce clashes. All (4) such sidechains are listed below:

Mol	Chain	Res	Type
1	A	219	HIS
1	C	147	GLN
1	C	219	HIS
1	D	219	HIS

5.3.3 RNA [i](#)

There are no RNA molecules in this entry.

5.4 Non-standard residues in protein, DNA, RNA chains [i](#)

There are no non-standard protein/DNA/RNA residues in this entry.

5.5 Carbohydrates [i](#)

There are no monosaccharides in this entry.

5.6 Ligand geometry

8 ligands are modelled in this entry.

In the following table, the Counts columns list the number of bonds (or angles) for which Mogul statistics could be retrieved, the number of bonds (or angles) that are observed in the model and the number of bonds (or angles) that are defined in the Chemical Component Dictionary. The Link column lists molecule types, if any, to which the group is linked. The Z score for a bond length (or angle) is the number of standard deviations the observed value is removed from the expected value. A bond length (or angle) with $|Z| > 2$ is considered an outlier worth inspection. RMSZ is the root-mean-square of all Z scores of the bond lengths (or angles).

Mol	Type	Chain	Res	Link	Bond lengths			Bond angles		
					Counts	RMSZ	# Z > 2	Counts	RMSZ	# Z > 2
3	6ZP	C	902	-	30,30,30	2.49	7 (23%)	35,41,41	1.62	7 (20%)
3	6ZP	A	902	-	30,30,30	2.50	7 (23%)	35,41,41	1.64	6 (17%)
2	NAG	B	901	1	14,14,15	0.23	0	17,19,21	0.42	0
2	NAG	A	901	1	14,14,15	0.28	0	17,19,21	0.37	0
3	6ZP	B	902	-	30,30,30	2.50	7 (23%)	35,41,41	1.62	6 (17%)
2	NAG	C	901	1	14,14,15	0.38	0	17,19,21	1.30	2 (11%)
2	NAG	D	901	1	14,14,15	0.23	0	17,19,21	0.40	0
3	6ZP	D	902	-	30,30,30	2.49	7 (23%)	35,41,41	1.61	6 (17%)

In the following table, the Chirals column lists the number of chiral outliers, the number of chiral centers analysed, the number of these observed in the model and the number defined in the Chemical Component Dictionary. Similar counts are reported in the Torsion and Rings columns. '-' means no outliers of that kind were identified.

Mol	Type	Chain	Res	Link	Chirals	Torsions	Rings
3	6ZP	C	902	-	-	0/13/14/14	0/4/4/4
3	6ZP	A	902	-	-	0/13/14/14	0/4/4/4
2	NAG	B	901	1	-	0/6/23/26	0/1/1/1
2	NAG	A	901	1	-	2/6/23/26	0/1/1/1
3	6ZP	B	902	-	-	0/13/14/14	0/4/4/4
2	NAG	C	901	1	-	4/6/23/26	0/1/1/1
2	NAG	D	901	1	-	2/6/23/26	0/1/1/1
3	6ZP	D	902	-	-	0/13/14/14	0/4/4/4

All (28) bond length outliers are listed below:

Mol	Chain	Res	Type	Atoms	Z	Observed(Å)	Ideal(Å)
3	B	902	6ZP	C08-C09	-7.55	1.39	1.49
3	C	902	6ZP	C08-C09	-7.52	1.39	1.49

Continued on next page...

Continued from previous page...

Mol	Chain	Res	Type	Atoms	Z	Observed(Å)	Ideal(Å)
3	A	902	6ZP	C08-C09	-7.48	1.39	1.49
3	D	902	6ZP	C08-C09	-7.48	1.39	1.49
3	B	902	6ZP	C22-N21	-7.22	1.33	1.44
3	A	902	6ZP	C22-N21	-7.21	1.33	1.44
3	D	902	6ZP	C22-N21	-7.19	1.33	1.44
3	C	902	6ZP	C22-N21	-7.15	1.33	1.44
3	A	902	6ZP	C03-C02	5.92	1.53	1.44
3	B	902	6ZP	C03-C02	5.92	1.53	1.44
3	D	902	6ZP	C03-C02	5.87	1.53	1.44
3	C	902	6ZP	C03-C02	5.86	1.53	1.44
3	D	902	6ZP	C09-C10	-3.31	1.40	1.46
3	B	902	6ZP	C09-C10	-3.30	1.40	1.46
3	A	902	6ZP	C09-C10	-3.29	1.40	1.46
3	C	902	6ZP	C09-C10	-3.26	1.40	1.46
3	D	902	6ZP	C20-N21	-2.93	1.32	1.38
3	B	902	6ZP	C20-N21	-2.91	1.32	1.38
3	C	902	6ZP	C20-N21	-2.91	1.32	1.38
3	A	902	6ZP	C20-N21	-2.88	1.32	1.38
3	C	902	6ZP	C10-N21	-2.59	1.35	1.41
3	A	902	6ZP	C10-N21	-2.59	1.35	1.41
3	B	902	6ZP	C10-N21	-2.56	1.35	1.41
3	D	902	6ZP	C10-N21	-2.53	1.35	1.41
3	D	902	6ZP	C14-C13	-2.24	1.39	1.47
3	B	902	6ZP	C14-C13	-2.24	1.39	1.47
3	A	902	6ZP	C14-C13	-2.23	1.39	1.47
3	C	902	6ZP	C14-C13	-2.23	1.39	1.47

All (27) bond angle outliers are listed below:

Mol	Chain	Res	Type	Atoms	Z	Observed(°)	Ideal(°)
3	A	902	6ZP	O11-C10-C09	-5.47	118.33	125.72
3	B	902	6ZP	O11-C10-C09	-5.46	118.35	125.72
3	C	902	6ZP	O11-C10-C09	-5.46	118.35	125.72
3	D	902	6ZP	O11-C10-C09	-5.43	118.38	125.72
2	C	901	NAG	C2-N2-C7	4.38	129.14	122.90
3	A	902	6ZP	C16-N15-C14	3.70	121.72	116.93
3	B	902	6ZP	C16-N15-C14	3.67	121.69	116.93
3	C	902	6ZP	C16-N15-C14	3.66	121.68	116.93
3	D	902	6ZP	C16-N15-C14	3.63	121.64	116.93
3	A	902	6ZP	C08-C09-C12	-3.15	119.56	122.83
3	D	902	6ZP	C08-C09-C12	-3.14	119.56	122.83
3	C	902	6ZP	C08-C09-C12	-3.13	119.58	122.83

Continued on next page...

Continued from previous page...

Mol	Chain	Res	Type	Atoms	Z	Observed(°)	Ideal(°)
3	B	902	6ZP	C08-C09-C12	-3.12	119.59	122.83
3	A	902	6ZP	C20-C13-C12	3.05	120.11	117.38
3	C	902	6ZP	C20-C13-C12	2.99	120.06	117.38
3	B	902	6ZP	C20-C13-C12	2.99	120.05	117.38
3	D	902	6ZP	C20-C13-C12	2.95	120.03	117.38
3	A	902	6ZP	C08-C09-C10	2.33	121.61	119.39
3	B	902	6ZP	C08-C09-C10	2.31	121.59	119.39
3	C	902	6ZP	C08-C09-C10	2.30	121.58	119.39
3	D	902	6ZP	C08-C09-C10	2.29	121.57	119.39
3	A	902	6ZP	C09-C12-C13	-2.11	119.14	122.38
3	C	902	6ZP	C09-C12-C13	-2.09	119.16	122.38
3	D	902	6ZP	C09-C12-C13	-2.09	119.17	122.38
2	C	901	NAG	C1-C2-N2	2.08	114.05	110.49
3	B	902	6ZP	C09-C12-C13	-2.08	119.18	122.38
3	C	902	6ZP	C17-C16-N15	-2.01	120.14	123.43

There are no chirality outliers.

All (8) torsion outliers are listed below:

Mol	Chain	Res	Type	Atoms
2	A	901	NAG	O5-C5-C6-O6
2	A	901	NAG	C4-C5-C6-O6
2	C	901	NAG	C8-C7-N2-C2
2	C	901	NAG	O7-C7-N2-C2
2	D	901	NAG	C4-C5-C6-O6
2	D	901	NAG	O5-C5-C6-O6
2	C	901	NAG	C3-C2-N2-C7
2	C	901	NAG	C4-C5-C6-O6

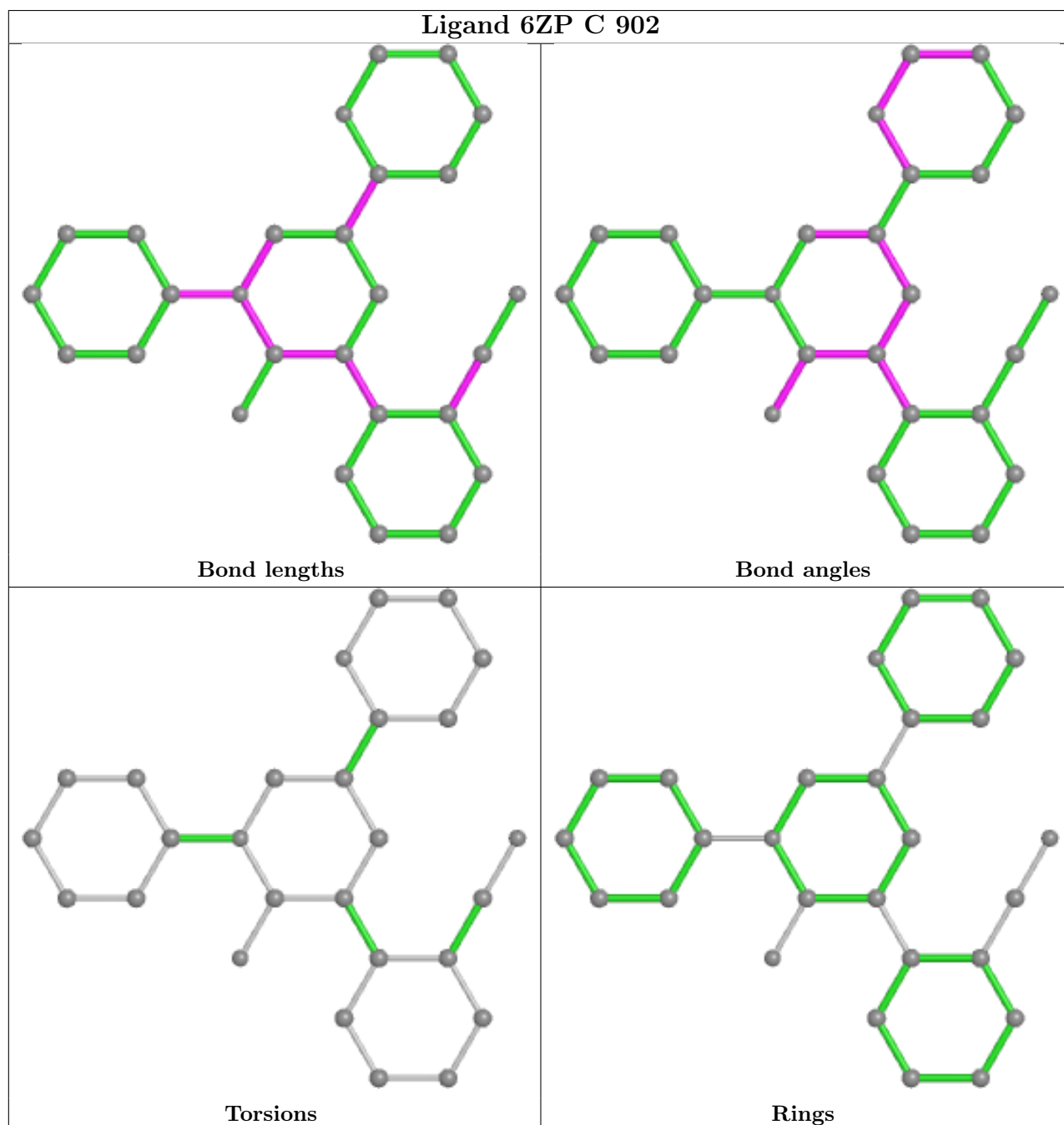
There are no ring outliers.

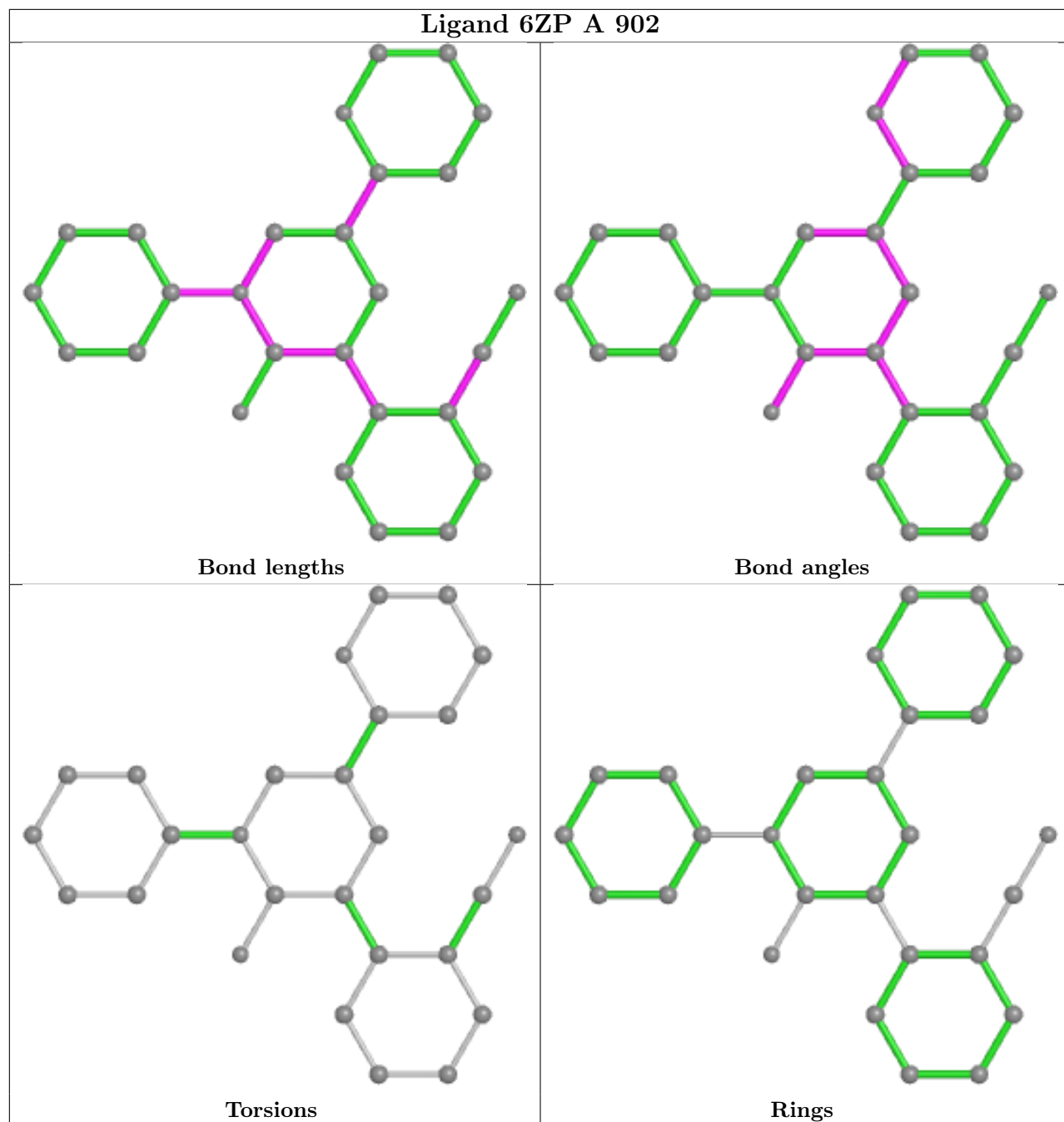
6 monomers are involved in 11 short contacts:

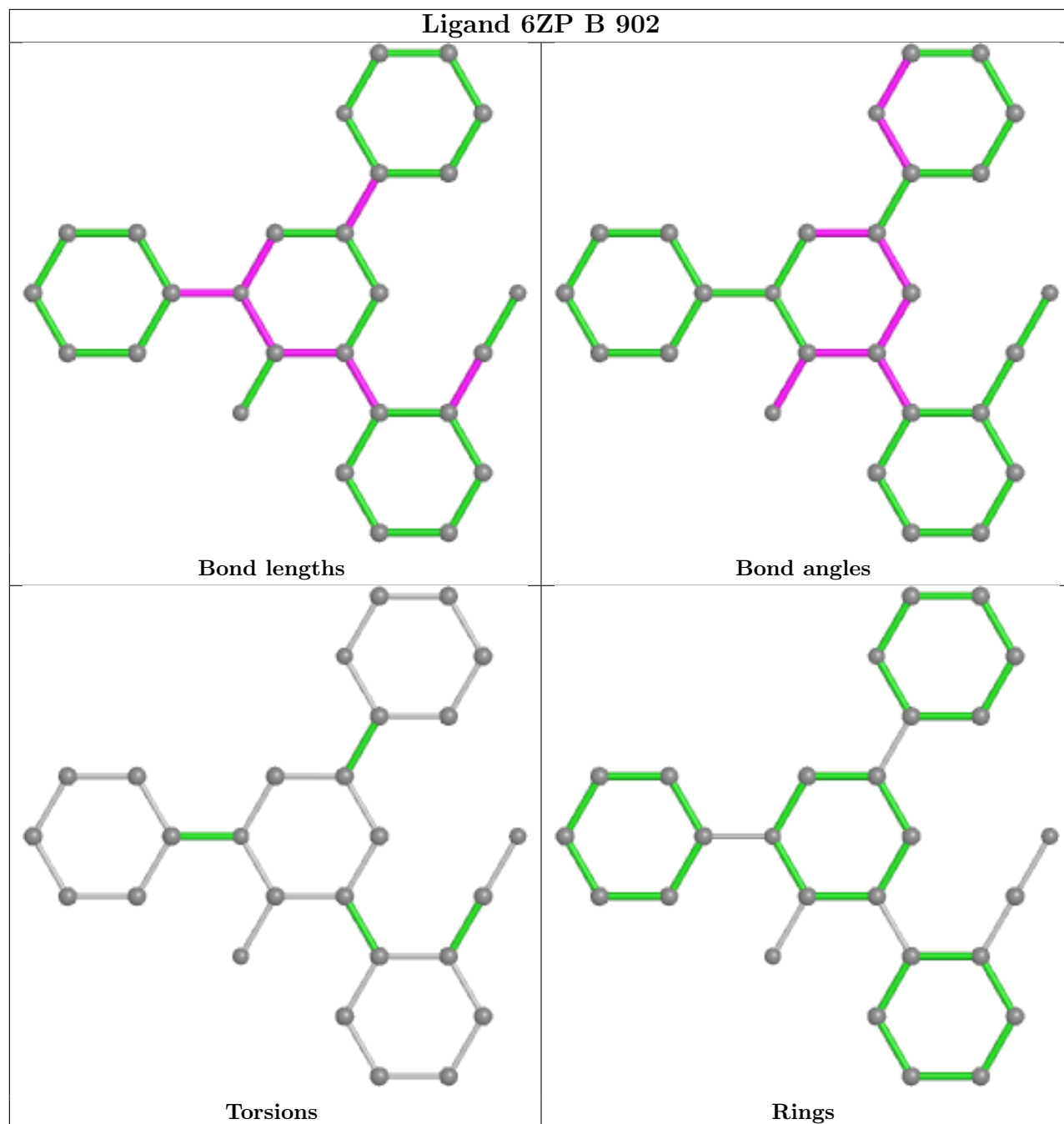
Mol	Chain	Res	Type	Clashes	Symm-Clashes
3	C	902	6ZP	2	0
3	A	902	6ZP	2	0
3	B	902	6ZP	2	0
2	C	901	NAG	1	0
2	D	901	NAG	1	0
3	D	902	6ZP	3	0

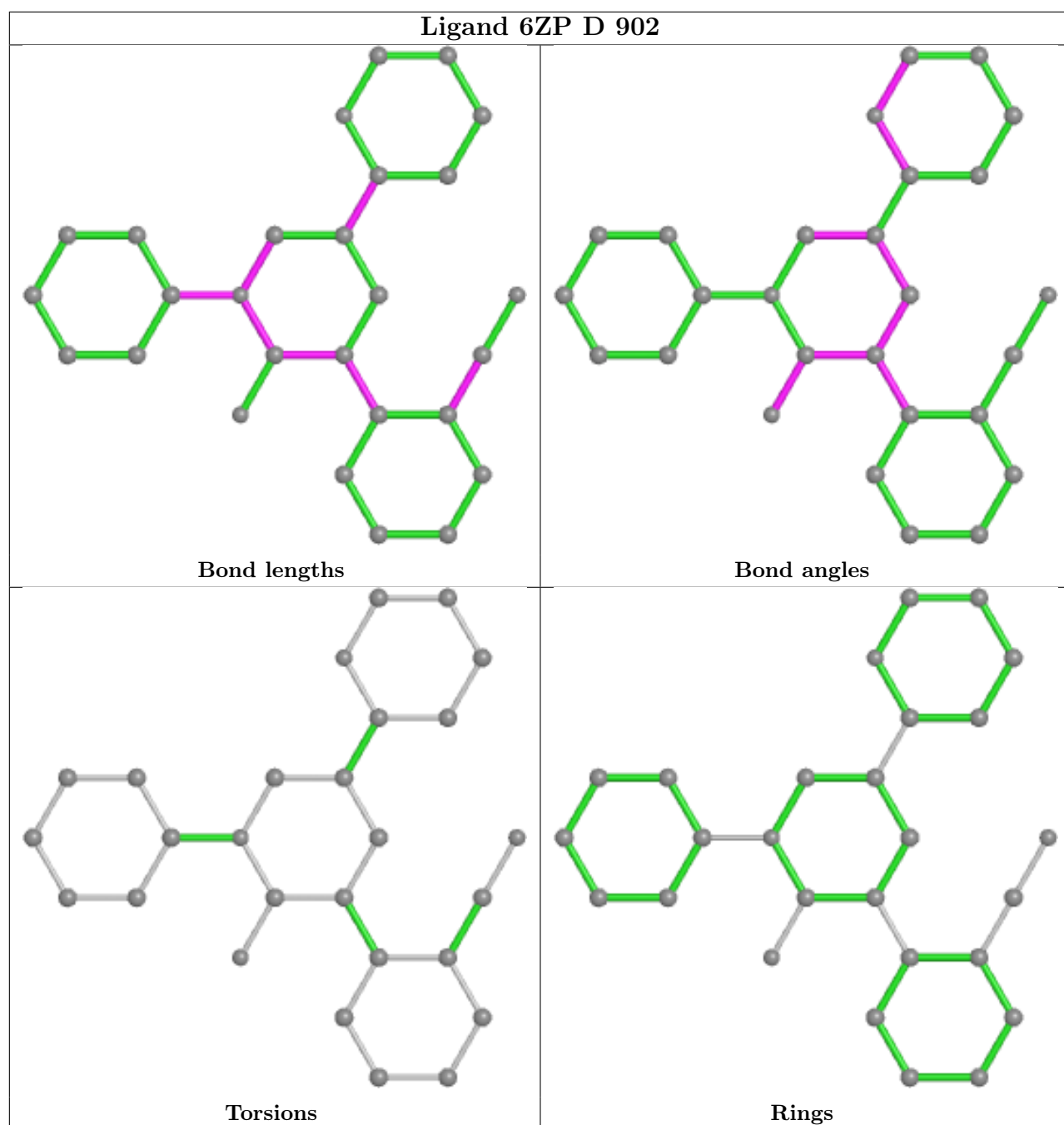
The following is a two-dimensional graphical depiction of Mogul quality analysis of bond lengths,

bond angles, torsion angles, and ring geometry for all instances of the Ligand of Interest. In addition, ligands with molecular weight > 250 and outliers as shown on the validation Tables will also be included. For torsion angles, if less than 5% of the Mogul distribution of torsion angles is within 10 degrees of the torsion angle in question, then that torsion angle is considered an outlier. Any bond that is central to one or more torsion angles identified as an outlier by Mogul will be highlighted in the graph. For rings, the root-mean-square deviation (RMSD) between the ring in question and similar rings identified by Mogul is calculated over all ring torsion angles. If the average RMSD is greater than 60 degrees and the minimal RMSD between the ring in question and any Mogul-identified rings is also greater than 60 degrees, then that ring is considered an outlier. The outliers are highlighted in purple. The color gray indicates Mogul did not find sufficient equivalents in the CSD to analyse the geometry.









5.7 Other polymers [i](#)

There are no such residues in this entry.

5.8 Polymer linkage issues [i](#)

There are no chain breaks in this entry.

6 Fit of model and data

6.1 Protein, DNA and RNA chains

In the following table, the column labelled ‘#RSRZ > 2’ contains the number (and percentage) of RSRZ outliers, followed by percent RSRZ outliers for the chain as percentile scores relative to all X-ray entries and entries of similar resolution. The OWAB column contains the minimum, median, 95th percentile and maximum values of the occupancy-weighted average B-factor per residue. The column labelled ‘Q < 0.9’ lists the number of (and percentage) of residues with an average occupancy less than 0.9.

Mol	Chain	Analysed	<RSRZ>	#RSRZ>2	OWAB(Å ²)	Q<0.9
1	A	777/803 (96%)	-0.17	12 (1%) 73 64	121, 219, 345, 425	0
1	B	773/803 (96%)	-0.05	23 (2%) 50 39	126, 208, 343, 403	0
1	C	773/803 (96%)	-0.02	13 (1%) 70 60	26, 245, 351, 418	0
1	D	777/803 (96%)	-0.05	27 (3%) 44 35	137, 260, 387, 440	0
All	All	3100/3212 (96%)	-0.07	75 (2%) 59 49	26, 232, 355, 440	0

All (75) RSRZ outliers are listed below:

Mol	Chain	Res	Type	RSRZ
1	A	779	GLY	6.6
1	B	816	TYR	6.0
1	B	309	ARG	5.2
1	A	778	SER	5.1
1	B	813	GLU	4.7
1	D	486	GLU	4.5
1	B	776	LYS	4.4
1	D	476	ILE	4.3
1	A	780	SER	4.2
1	D	453	ARG	4.1
1	A	311	ASN	3.7
1	D	485	ARG	3.7
1	B	573	ILE	3.7
1	D	399	THR	3.7
1	D	703	LEU	3.6
1	C	781	LYS	3.4
1	D	488	VAL	3.3
1	D	778	SER	3.2
1	C	40	GLU	3.1
1	D	477	ALA	3.1
1	C	647	TYR	3.0

Continued on next page...

Continued from previous page...

Mol	Chain	Res	Type	RSRZ
1	D	442	LEU	3.0
1	B	775	ALA	3.0
1	A	532	ALA	3.0
1	A	310	GLY	3.0
1	C	803	LEU	2.9
1	C	632	PRO	2.9
1	B	777	ASP	2.9
1	B	456	ASP	2.8
1	A	781	LYS	2.8
1	B	815	CYS	2.8
1	D	440	TYR	2.7
1	A	542	LEU	2.7
1	D	491	PHE	2.7
1	B	104	ASP	2.7
1	B	697	LYS	2.7
1	D	484	VAL	2.7
1	A	536	VAL	2.6
1	C	536	VAL	2.6
1	D	649	THR	2.6
1	C	21	GLY	2.6
1	B	144	SER	2.6
1	C	296	PHE	2.5
1	B	476	ILE	2.5
1	D	733	GLY	2.5
1	A	544	SER	2.5
1	C	419	GLU	2.4
1	D	776	LYS	2.3
1	D	487	GLU	2.3
1	C	401	LEU	2.3
1	A	540	LEU	2.3
1	B	634	GLU	2.3
1	B	630	VAL	2.3
1	D	460	TRP	2.2
1	B	11	SER	2.2
1	C	700	TYR	2.2
1	D	489	ILE	2.2
1	D	543	VAL	2.2
1	B	814	PHE	2.2
1	D	431	GLU	2.2
1	B	10	ASN	2.1
1	D	483	LEU	2.1
1	B	576	SER	2.1

Continued on next page...

Continued from previous page...

Mol	Chain	Res	Type	RSRZ
1	C	586	GLN	2.1
1	A	782	GLU	2.1
1	B	812	ILE	2.1
1	D	175	GLU	2.1
1	B	779	GLY	2.1
1	D	587	GLN	2.1
1	D	588	GLY	2.0
1	D	422	GLU	2.0
1	B	649	THR	2.0
1	C	39	SER	2.0
1	B	648	GLY	2.0
1	D	702	TYR	2.0

6.2 Non-standard residues in protein, DNA, RNA chains [i](#)

There are no non-standard protein/DNA/RNA residues in this entry.

6.3 Carbohydrates [i](#)

There are no monosaccharides in this entry.

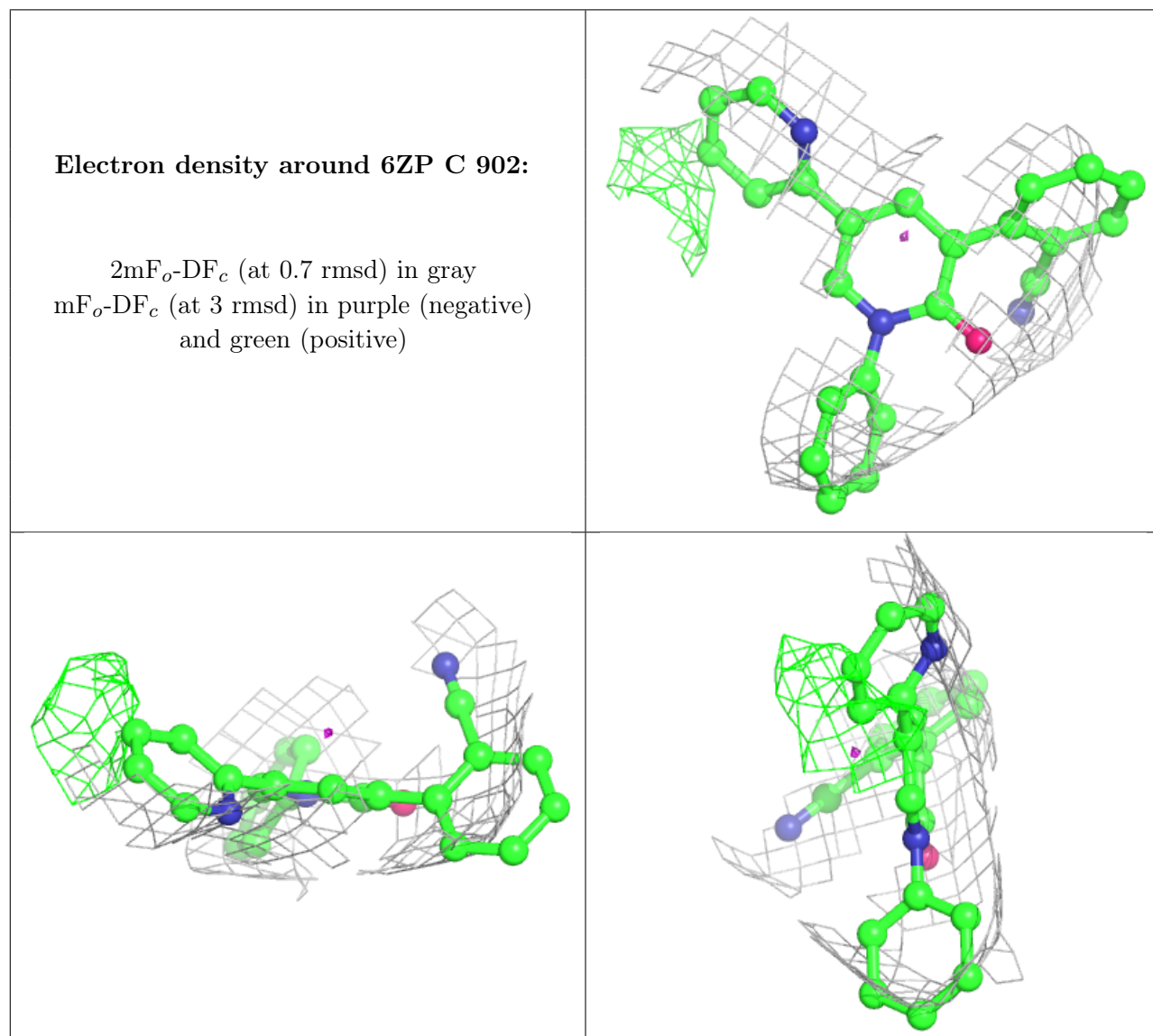
6.4 Ligands [i](#)

In the following table, the Atoms column lists the number of modelled atoms in the group and the number defined in the chemical component dictionary. The B-factors column lists the minimum, median, 95th percentile and maximum values of B factors of atoms in the group. The column labelled 'Q< 0.9' lists the number of atoms with occupancy less than 0.9.

Mol	Type	Chain	Res	Atoms	RSCC	RSR	B-factors(Å ²)	Q<0.9
2	NAG	A	901	14/15	0.70	0.54	129,179,249,257	0
2	NAG	D	901	14/15	0.72	0.33	213,248,273,287	0
3	6ZP	C	902	27/27	0.81	0.27	144,215,215,215	0
3	6ZP	A	902	27/27	0.83	0.21	144,210,215,215	0
3	6ZP	B	902	27/27	0.85	0.25	135,215,215,215	0
3	6ZP	D	902	27/27	0.85	0.12	152,203,215,215	0
2	NAG	C	901	14/15	0.91	0.19	158,248,297,304	0
2	NAG	B	901	14/15	0.93	0.38	174,197,262,323	0

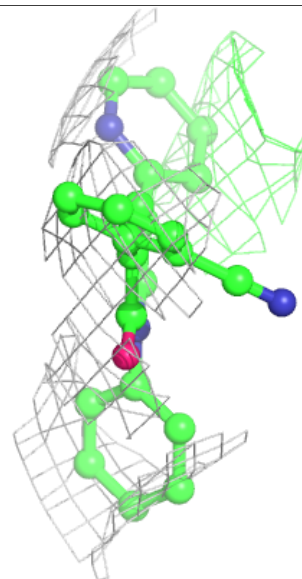
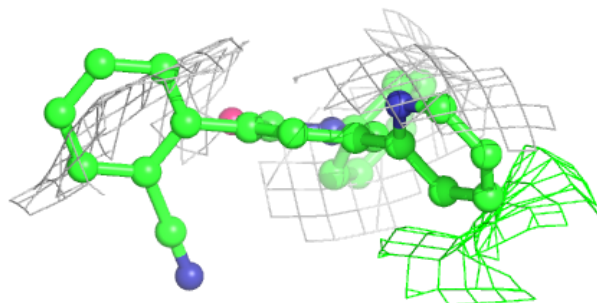
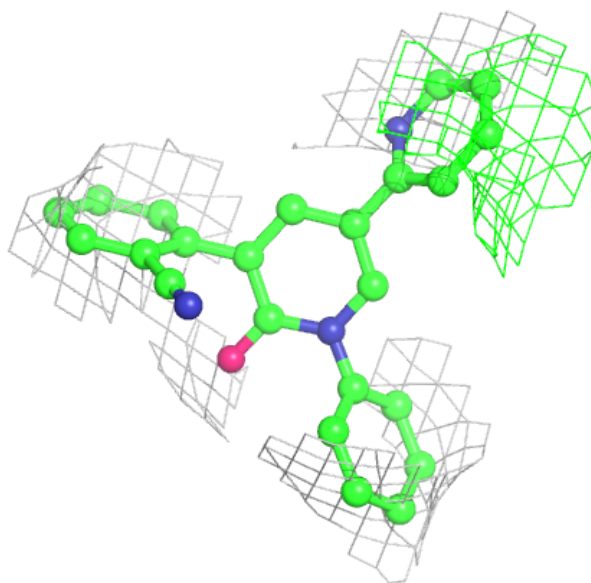
The following is a graphical depiction of the model fit to experimental electron density of all instances of the Ligand of Interest. In addition, ligands with molecular weight > 250 and outliers

as shown on the geometry validation Tables will also be included. Each fit is shown from different orientation to approximate a three-dimensional view.



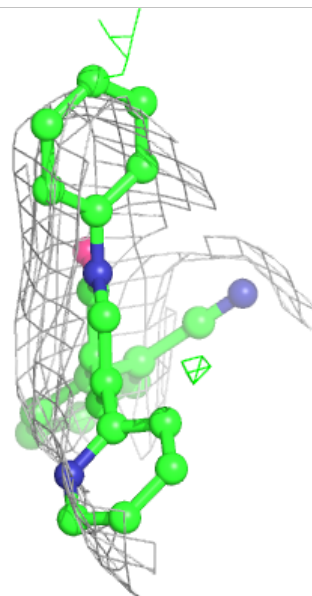
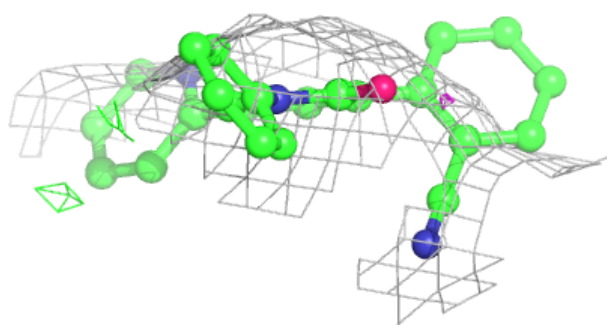
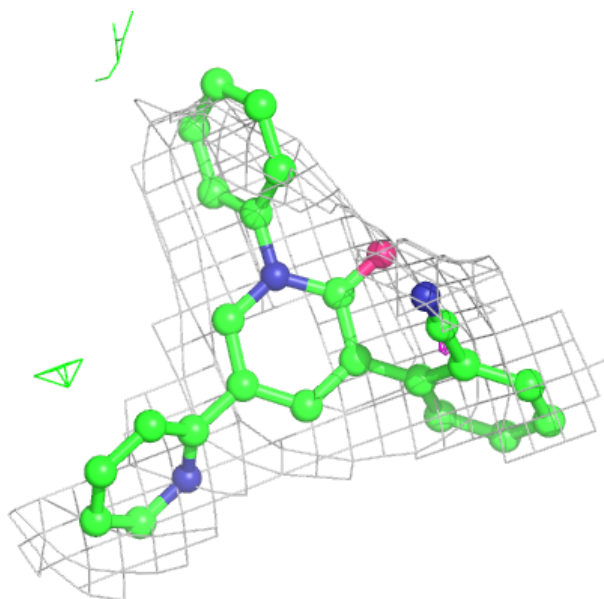
Electron density around 6ZP A 902:

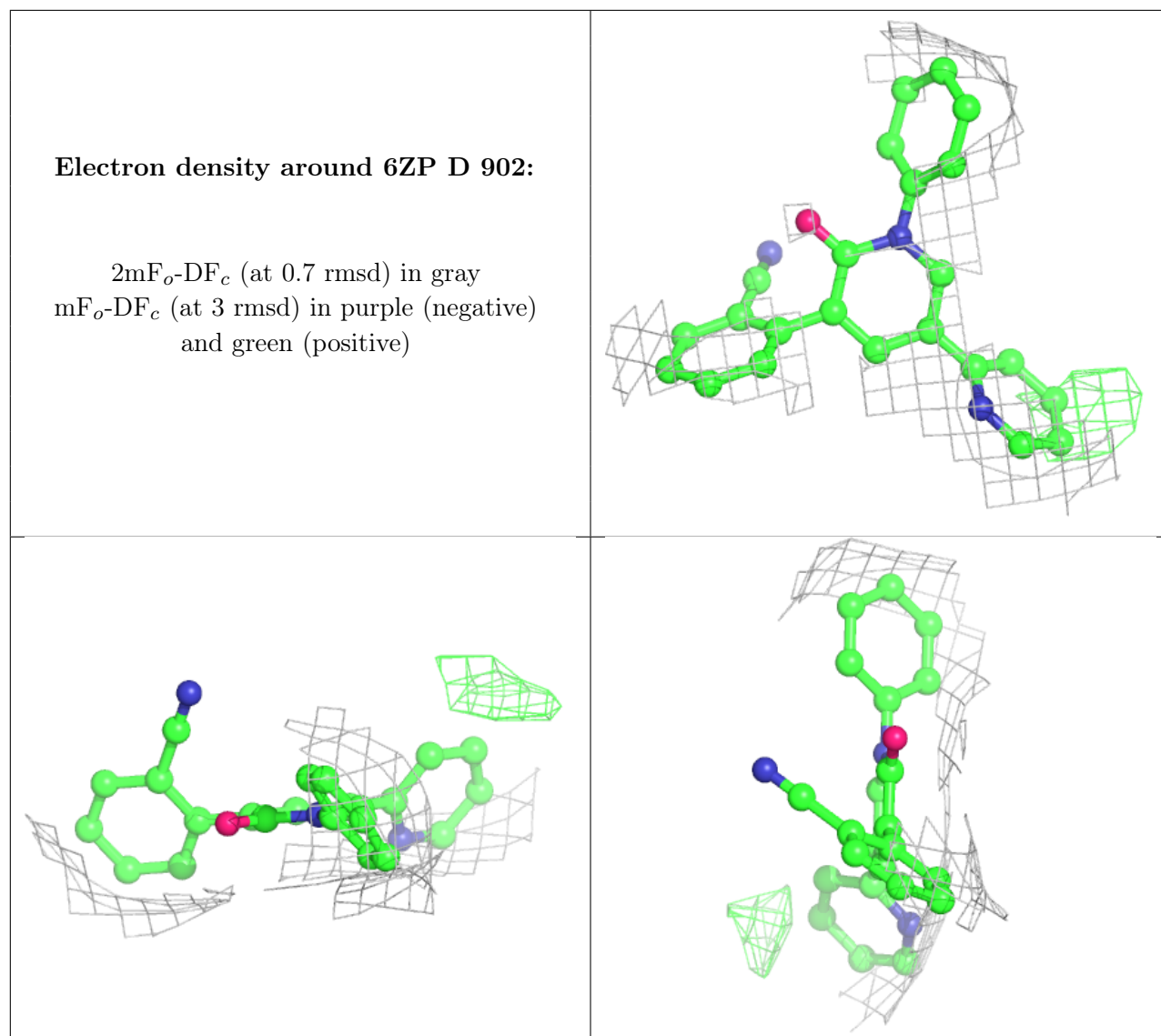
$2mF_o-DF_c$ (at 0.7 rmsd) in gray
 mF_o-DF_c (at 3 rmsd) in purple (negative)
and green (positive)



Electron density around 6ZP B 902:

$2mF_o-DF_c$ (at 0.7 rmsd) in gray
 mF_o-DF_c (at 3 rmsd) in purple (negative)
and green (positive)





6.5 Other polymers [\(i\)](#)

There are no such residues in this entry.