



# Full wwPDB X-ray Structure Validation Report ⓘ

Aug 25, 2020 – 05:09 PM BST

PDB ID : 4KU0  
Title : Enterobacteria phage T4 gp5.4 PAAR repeat protein in complex with T4 gp5  
beta-helix fragment  
Authors : Buth, S.A.; Leiman, P.G.; Shneider, M.M.  
Deposited on : 2013-05-21  
Resolution : 1.15 Å(reported)

This is a Full wwPDB X-ray Structure Validation Report for a publicly released PDB entry.

We welcome your comments at [validation@mail.wwpdb.org](mailto:validation@mail.wwpdb.org)

A user guide is available at

<https://www.wwpdb.org/validation/2017/XrayValidationReportHelp>

with specific help available everywhere you see the ⓘ symbol.

---

The following versions of software and data (see [references ⓘ](#)) were used in the production of this report:

MolProbity : 4.02b-467  
Mogul : 1.8.5 (274361), CSD as541be (2020)  
Xtriage (Phenix) : 1.13  
EDS : 2.13  
buster-report : 1.1.7 (2018)  
Percentile statistics : 20191225.v01 (using entries in the PDB archive December 25th 2019)  
Refmac : 5.8.0158  
CCP4 : 7.0.044 (Gargrove)  
Ideal geometry (proteins) : Engh & Huber (2001)  
Ideal geometry (DNA, RNA) : Parkinson et al. (1996)  
Validation Pipeline (wwPDB-VP) : 2.13

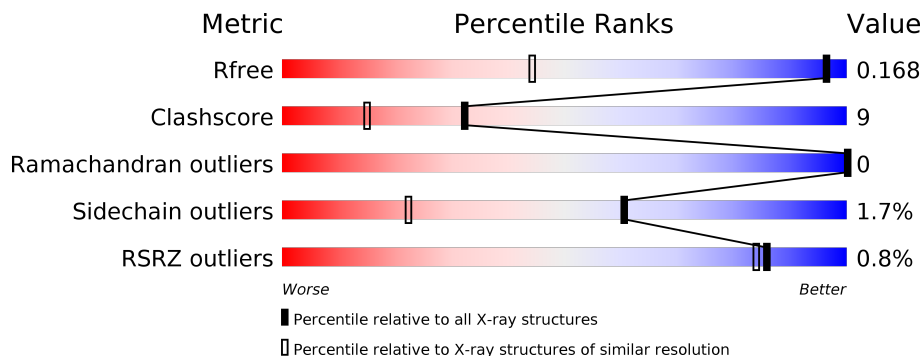
# 1 Overall quality at a glance

The following experimental techniques were used to determine the structure:

*X-RAY DIFFRACTION*

The reported resolution of this entry is 1.15 Å.

Percentile scores (ranging between 0-100) for global validation metrics of the entry are shown in the following graphic. The table shows the number of entries on which the scores are based.



Metric	Whole archive (#Entries)	Similar resolution (#Entries, resolution range(Å))
$R_{free}$	130704	1492 (1.18-1.10)
Clashscore	141614	1537 (1.18-1.10)
Ramachandran outliers	138981	1483 (1.18-1.10)
Sidechain outliers	138945	1480 (1.18-1.10)
RSRZ outliers	127900	1464 (1.18-1.10)

The table below summarises the geometric issues observed across the polymeric chains and their fit to the electron density. The red, orange, yellow and green segments on the lower bar indicate the fraction of residues that contain outliers for  $\geq 3$ , 2, 1 and 0 types of geometric quality criteria respectively. A grey segment represents the fraction of residues that are not modelled. The numeric value for each fraction is indicated below the corresponding segment, with a dot representing fractions  $\leq 5\%$ . The upper red bar (where present) indicates the fraction of residues that have poor fit to the electron density. The numeric value is given above the bar.

Mol	Chain	Length	Quality of chain
1	A	96	
1	B	96	
1	C	96	
2	D	96	

## 2 Entry composition i

There are 10 unique types of molecules in this entry. The entry contains 3531 atoms, of which 0 are hydrogens and 0 are deuteriums.

In the tables below, the ZeroOcc column contains the number of atoms modelled with zero occupancy, the AltConf column contains the number of residues with at least one atom in alternate conformation and the Trace column contains the number of residues modelled with at most 2 atoms.

- Molecule 1 is a protein called Tail-associated lysozyme.

Mol	Chain	Residues	Atoms					ZeroOcc	AltConf	Trace
			Total	C	N	O	S			
1	A	92	701	428	117	154	2	0	4	0
1	B	92	735	445	123	165	2	0	9	0
1	C	92	730	441	122	164	3	0	8	0

There are 12 discrepancies between the modelled and reference sequences:

Chain	Residue	Modelled	Actual	Comment	Reference
A	480	GLY	-	EXPRESSION TAG	UNP P16009
A	481	SER	-	EXPRESSION TAG	UNP P16009
A	482	GLY	-	EXPRESSION TAG	UNP P16009
A	483	SER	-	EXPRESSION TAG	UNP P16009
B	480	GLY	-	EXPRESSION TAG	UNP P16009
B	481	SER	-	EXPRESSION TAG	UNP P16009
B	482	GLY	-	EXPRESSION TAG	UNP P16009
B	483	SER	-	EXPRESSION TAG	UNP P16009
C	480	GLY	-	EXPRESSION TAG	UNP P16009
C	481	SER	-	EXPRESSION TAG	UNP P16009
C	482	GLY	-	EXPRESSION TAG	UNP P16009
C	483	SER	-	EXPRESSION TAG	UNP P16009

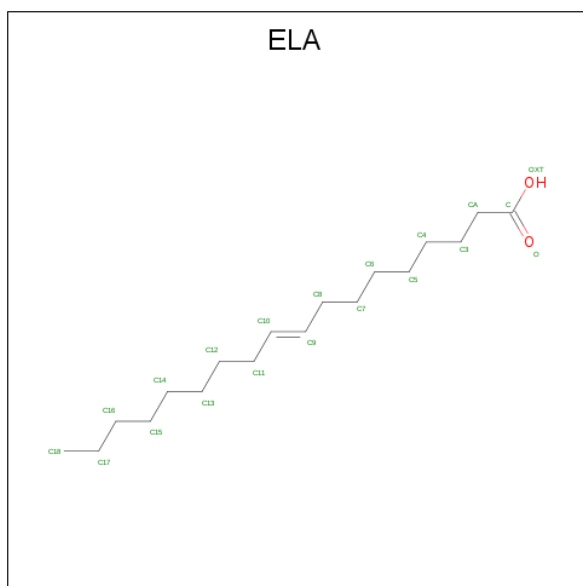
- Molecule 2 is a protein called Uncharacterized 10.2 kDa protein in segC-Gp6 intergenic region.

Mol	Chain	Residues	Atoms					ZeroOcc	AltConf	Trace
			Total	C	N	O	S			
2	D	96	727	459	123	142	3	0	2	0

- Molecule 3 is MAGNESIUM ION (three-letter code: MG) (formula: Mg).

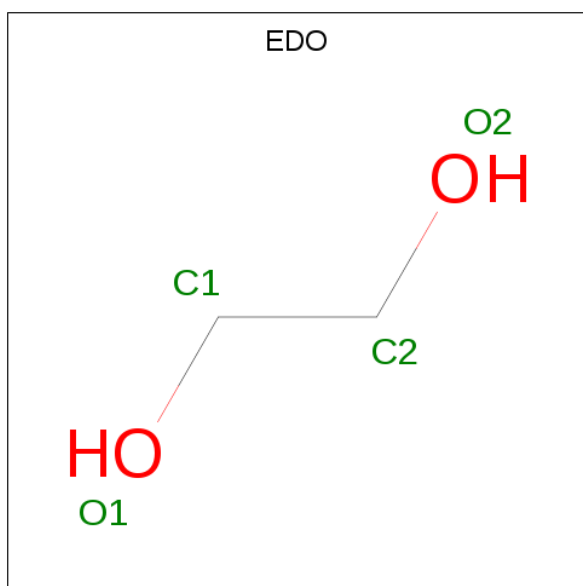
Mol	Chain	Residues	Atoms	ZeroOcc	AltConf
3	A	1	Total Mg 1 1	0	0

- Molecule 4 is 9-OCTADECENOIC ACID (three-letter code: ELA) (formula:  $C_{18}H_{34}O_2$ ).



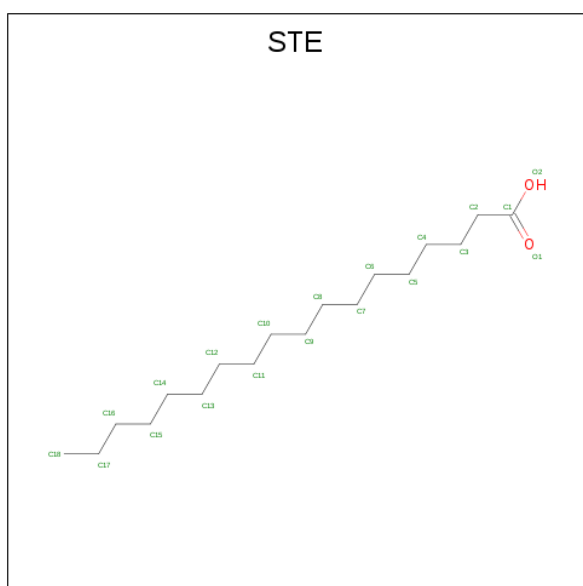
Mol	Chain	Residues	Atoms	ZeroOcc	AltConf
4	A	1	Total C O 20 18 2	0	0

- Molecule 5 is 1,2-ETHANEDIOL (three-letter code: EDO) (formula:  $C_2H_6O_2$ ).



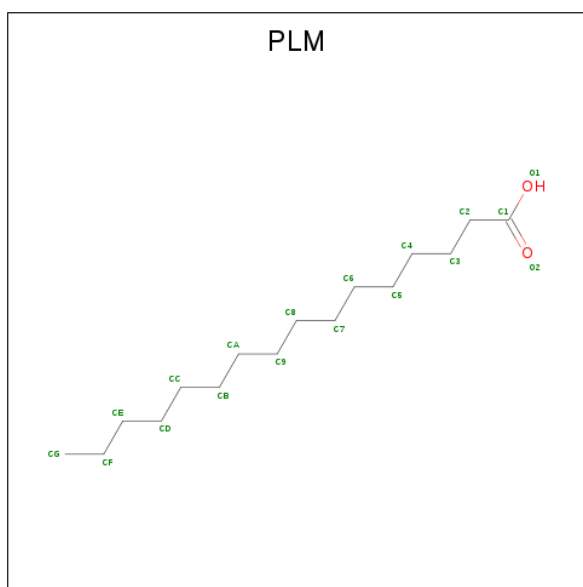
Mol	Chain	Residues	Atoms			ZeroOcc	AltConf
5	A	1	Total	C	O	0	0
			4	2	2		
5	C	1	Total	C	O	0	0
			4	2	2		
5	D	1	Total	C	O	0	0
			4	2	2		
5	D	1	Total	C	O	0	0
			4	2	2		

- Molecule 6 is STEARIC ACID (three-letter code: STE) (formula:  $C_{18}H_{36}O_2$ ).



Mol	Chain	Residues	Atoms			ZeroOcc	AltConf
6	B	1	Total	C	O	0	0
			20	18	2		

- Molecule 7 is PALMITIC ACID (three-letter code: PLM) (formula:  $C_{16}H_{32}O_2$ ).



Mol	Chain	Residues	Atoms		ZeroOcc	AltConf
7	C	1	Total	C O	0	0
			18	16 2		

- Molecule 8 is FE (III) ION (three-letter code: FE) (formula: Fe).

Mol	Chain	Residues	Atoms		ZeroOcc	AltConf
8	D	1	Total	Fe	0	0
			1	1		

- Molecule 9 is SODIUM ION (three-letter code: NA) (formula: Na).

Mol	Chain	Residues	Atoms		ZeroOcc	AltConf
9	D	1	Total	Na	0	0
			1	1		


- Molecule 10 is water.

Mol	Chain	Residues	Atoms		ZeroOcc	AltConf
10	A	147	Total	O	0	0
			147	147		
10	B	149	Total	O	0	0
			149	149		
10	C	139	Total	O	0	0
			139	139		
10	D	126	Total	O	0	0
			126	126		

### 3 Residue-property plots [i](#)

These plots are drawn for all protein, RNA, DNA and oligosaccharide chains in the entry. The first graphic for a chain summarises the proportions of the various outlier classes displayed in the second graphic. The second graphic shows the sequence view annotated by issues in geometry and electron density. Residues are color-coded according to the number of geometric quality criteria for which they contain at least one outlier: green = 0, yellow = 1, orange = 2 and red = 3 or more. A red dot above a residue indicates a poor fit to the electron density ( $RSRZ > 2$ ). Stretches of 2 or more consecutive residues without any outlier are shown as a green connector. Residues present in the sample, but not in the model, are shown in grey.

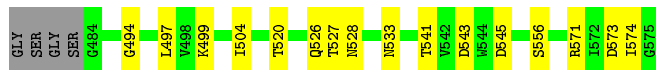
- Molecule 1: Tail-associated lysozyme

Chain A: 




- Molecule 1: Tail-associated lysozyme

Chain B: 

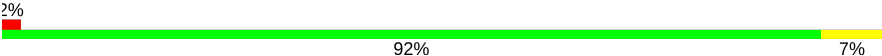


- Molecule 1: Tail-associated lysozyme

Chain C: 



- Molecule 2: Uncharacterized 10.2 kDa protein in segC-Gp6 intergenic region

Chain D: 



## 4 Data and refinement statistics

Property	Value	Source
Space group	P 1 21 1	Depositor
Cell constants a, b, c, $\alpha$ , $\beta$ , $\gamma$	46.30Å 49.33Å 84.06Å 90.00° 96.19° 90.00°	Depositor
Resolution (Å)	46.00 – 1.15 49.33 – 1.15	Depositor EDS
% Data completeness (in resolution range)	96.2 (46.00-1.15) 95.6 (49.33-1.15)	Depositor EDS
$R_{merge}$	0.05	Depositor
$R_{sym}$	(Not available)	Depositor
$\langle I/\sigma(I) \rangle$ <sup>1</sup>	0.55 (at 1.15Å)	Xtrriage
Refinement program	SHELXL-97	Depositor
R, $R_{free}$	0.137 , 0.171 0.134 , 0.168	Depositor DCC
$R_{free}$ test set	27455 reflections (3.47%)	wwPDB-VP
Wilson B-factor (Å <sup>2</sup> )	12.9	Xtrriage
Anisotropy	0.376	Xtrriage
Bulk solvent $k_{sol}$ (e/Å <sup>3</sup> ), $B_{sol}$ (Å <sup>2</sup> )	0.36 , 75.3	EDS
L-test for twinning <sup>2</sup>	$\langle  L  \rangle = 0.49$ , $\langle L^2 \rangle = 0.32$	Xtrriage
Estimated twinning fraction	No twinning to report.	Xtrriage
$F_o, F_c$ correlation	0.98	EDS
Total number of atoms	3531	wwPDB-VP
Average B, all atoms (Å <sup>2</sup> )	22.0	wwPDB-VP

Xtrriage's analysis on translational NCS is as follows: *The largest off-origin peak in the Patterson function is 8.22% of the height of the origin peak. No significant pseudotranslation is detected.*

<sup>1</sup>Intensities estimated from amplitudes.

<sup>2</sup>Theoretical values of  $\langle |L| \rangle$ ,  $\langle L^2 \rangle$  for acentric reflections are 0.5, 0.333 respectively for untwinned datasets, and 0.375, 0.2 for perfectly twinned datasets.



## 5 Model quality [i](#)

### 5.1 Standard geometry [i](#)

Bond lengths and bond angles in the following residue types are not validated in this section: STE, MG, NA, ELA, EDO, FE, PLM

The Z score for a bond length (or angle) is the number of standard deviations the observed value is removed from the expected value. A bond length (or angle) with  $|Z| > 5$  is considered an outlier worth inspection. RMSZ is the root-mean-square of all Z scores of the bond lengths (or angles).

Mol	Chain	Bond lengths		Bond angles	
		RMSZ	# Z  >5	RMSZ	# Z  >5
1	A	0.69	0/707	1.15	6/959 (0.6%)
1	B	0.68	0/741	1.00	0/1005
1	C	0.69	0/736	1.36	8/997 (0.8%)
2	D	0.69	0/741	1.09	0/1003
All	All	0.69	0/2925	1.16	14/3964 (0.4%)

There are no bond length outliers.

All (14) bond angle outliers are listed below:

Mol	Chain	Res	Type	Atoms	Z	Observed(°)	Ideal(°)
1	C	571	ARG	NE-CZ-NH1	-18.79	110.91	120.30
1	C	511[A]	ASP	CB-CG-OD2	-10.97	108.43	118.30
1	C	511[B]	ASP	CB-CG-OD2	-10.97	108.43	118.30
1	A	571	ARG	NE-CZ-NH2	-8.63	115.99	120.30
1	A	571	ARG	NH1-CZ-NH2	6.87	126.95	119.40
1	A	571	ARG	NE-CZ-NH1	-6.49	117.06	120.30
1	C	571	ARG	NE-CZ-NH2	6.37	123.48	120.30
1	C	565	TYR	CB-CG-CD2	-6.26	117.24	121.00
1	A	511	ASP	CB-CG-OD1	5.97	123.67	118.30
1	C	571	ARG	NH1-CZ-NH2	5.63	125.59	119.40
1	A	571	ARG	CD-NE-CZ	-5.60	115.75	123.60
1	C	496	ILE	CA-CB-CG1	5.51	121.47	111.00
1	C	502	VAL	CG1-CB-CG2	-5.36	102.33	110.90
1	A	571	ARG	CG-CD-NE	-5.34	100.58	111.80

There are no chirality outliers.

There are no planarity outliers.

## 5.2 Too-close contacts [\(i\)](#)

In the following table, the Non-H and H(model) columns list the number of non-hydrogen atoms and hydrogen atoms in the chain respectively. The H(added) column lists the number of hydrogen atoms added and optimized by MolProbity. The Clashes column lists the number of clashes within the asymmetric unit, whereas Symm-Clashes lists symmetry related clashes.

Mol	Chain	Non-H	H(model)	H(added)	Clashes	Symm-Clashes
1	A	701	0	681	17	0
1	B	735	0	702	20	0
1	C	730	0	692	26	0
2	D	727	0	735	6	0
3	A	1	0	0	0	0
4	A	20	0	33	2	0
5	A	4	0	6	0	0
5	C	4	0	6	1	0
5	D	8	0	12	1	0
6	B	20	0	35	5	0
7	C	18	0	31	4	0
8	D	1	0	0	0	0
9	D	1	0	0	0	0
10	A	147	0	0	0	0
10	B	149	0	0	2	0
10	C	139	0	0	7	0
10	D	126	0	0	3	0
All	All	3531	0	2933	52	0

The all-atom clashscore is defined as the number of clashes found per 1000 atoms (including hydrogen atoms). The all-atom clashscore for this structure is 9.

All (52) close contacts within the same asymmetric unit are listed below, sorted by their clash magnitude.

Atom-1	Atom-2	Interatomic distance (Å)	Clash overlap (Å)
1:C:504:ILE:HD11	7:C:601:PLM:H82	1.51	0.91
2:D:26:GLN:HE22	2:D:29:VAL:H	1.18	0.87
2:D:2:SER:N	5:D:104:EDO:HO1	1.77	0.83
1:A:520[B]:THR:HG23	10:B:747:HOH:O	1.88	0.73
1:A:502:VAL:HG11	4:A:602:ELA:H82	1.71	0.72
1:B:520[B]:THR:HG23	10:C:762:HOH:O	1.89	0.71
1:B:504:ILE:HD11	6:B:601:STE:H81	1.75	0.68
1:B:497:LEU:HD21	1:B:499[B]:LYS:HE3	1.78	0.65
1:C:502:VAL:HG21	7:C:601:PLM:H81	1.82	0.62
1:A:514:VAL:HG21	6:B:601:STE:H31	1.83	0.61

*Continued on next page...*

*Continued from previous page...*

Atom-1	Atom-2	Interatomic distance (Å)	Clash overlap (Å)
1:B:533:ASN:HD22	1:C:541:THR:H	1.49	0.60
1:B:527[B]:THR:HG23	10:B:727:HOH:O	2.03	0.59
1:B:556:SER:HA	1:C:561[B]:SER:OG	2.04	0.57
2:D:8:LYS:HE3	10:D:248:HOH:O	2.04	0.57
2:D:26:GLN:NE2	2:D:28:LYS:H	2.04	0.55
1:A:533:ASN:HD22	1:B:541:THR:H	1.53	0.55
1:A:512:ILE:HD11	7:C:601:PLM:H51	1.89	0.54
1:B:494:GLY:HA3	7:C:601:PLM:HF1	1.89	0.54
2:D:97[A]:LYS:HD3	10:D:326:HOH:O	2.09	0.53
1:B:497:LEU:CD2	1:B:499[B]:LYS:HE3	2.38	0.53
1:A:489:THR:HG21	1:B:499[B]:LYS:NZ	2.25	0.52
1:A:541:THR:H	1:C:533:ASN:HD22	1.60	0.49
1:B:520[B]:THR:OG1	1:C:528[B]:ASN:ND2	2.46	0.48
1:B:574[A]:ILE:HD11	1:C:574:ILE:HG21	1.94	0.48
6:B:601:STE:H183	6:B:601:STE:H151	1.63	0.48
1:C:571:ARG:NH1	5:C:602:EDO:O1	2.47	0.48
1:A:519[B]:THR:HG23	1:C:511[B]:ASP:OD1	2.14	0.47
1:B:526:GLN:HE21	1:B:528[B]:ASN:HD21	1.62	0.47
1:A:533:ASN:ND2	1:B:541:THR:H	2.13	0.46
1:B:533:ASN:ND2	1:C:541:THR:H	2.11	0.46
1:A:541:THR:H	1:C:533:ASN:ND2	2.14	0.46
1:C:571:ARG:NH1	1:C:573:ASP:OD1	2.48	0.46
1:A:537:LYS:HD3	1:B:545:ASP:HB3	1.97	0.46
1:B:543[A]:ASP:OD2	1:C:551[A]:THR:OG1	2.33	0.46
1:C:484:GLY:N	10:C:815:HOH:O	2.49	0.45
1:C:498:VAL:HG11	1:C:502:VAL:HG12	1.99	0.45
1:C:571:ARG:NH2	10:C:839:HOH:O	2.49	0.45
1:A:512:ILE:HG21	6:B:601:STE:H42	1.99	0.45
1:A:491:GLU:O	1:C:484:GLY:HA3	2.18	0.43
6:B:601:STE:H92	1:C:504:ILE:HG21	2.00	0.43
1:C:537[A]:LYS:NZ	10:C:825:HOH:O	2.50	0.43
1:A:551:THR:OG1	1:C:543[B]:ASP:OD1	2.37	0.43
1:A:504:ILE:HD11	4:A:602:ELA:H71	2.00	0.42
1:A:489:THR:HG21	1:B:499[B]:LYS:HZ1	1.84	0.41
1:B:571:ARG:NH1	1:B:573:ASP:OD1	2.53	0.41
1:C:537[A]:LYS:NZ	10:C:821:HOH:O	2.48	0.41
1:A:553[B]:LYS:HE2	1:C:545:ASP:OD1	2.20	0.41
2:D:97[A]:LYS:HE3	10:D:326:HOH:O	2.21	0.41
1:B:533:ASN:HD22	1:C:540:GLY:HA3	1.86	0.41
1:C:496:ILE:HD12	1:C:496:ILE:HG21	1.94	0.41
1:C:528[A]:ASN:ND2	10:C:762:HOH:O	2.53	0.41

*Continued on next page...*

Continued from previous page...

Atom-1	Atom-2	Interatomic distance (Å)	Clash overlap (Å)
1:C:519:THR:HG23	10:C:713:HOH:O	2.21	0.40

There are no symmetry-related clashes.

## 5.3 Torsion angles [i](#)

### 5.3.1 Protein backbone [i](#)

In the following table, the Percentiles column shows the percent Ramachandran outliers of the chain as a percentile score with respect to all X-ray entries followed by that with respect to entries of similar resolution.

The Analysed column shows the number of residues for which the backbone conformation was analysed, and the total number of residues.

Mol	Chain	Analysed	Favoured	Allowed	Outliers	Percentiles	
1	A	94/96 (98%)	93 (99%)	1 (1%)	0	100	100
1	B	99/96 (103%)	99 (100%)	0	0	100	100
1	C	98/96 (102%)	98 (100%)	0	0	100	100
2	D	95/96 (99%)	92 (97%)	3 (3%)	0	100	100
All	All	386/384 (100%)	382 (99%)	4 (1%)	0	100	100

There are no Ramachandran outliers to report.

### 5.3.2 Protein sidechains [i](#)

In the following table, the Percentiles column shows the percent sidechain outliers of the chain as a percentile score with respect to all X-ray entries followed by that with respect to entries of similar resolution.

The Analysed column shows the number of residues for which the sidechain conformation was analysed, and the total number of residues.

Mol	Chain	Analysed	Rotameric	Outliers	Percentiles	
1	A	78/76 (103%)	76 (97%)	2 (3%)	46	8
1	B	83/76 (109%)	83 (100%)	0	100	100
1	C	82/76 (108%)	81 (99%)	1 (1%)	71	35
2	D	80/78 (103%)	77 (96%)	3 (4%)	33	4

Continued on next page...

*Continued from previous page...*

Mol	Chain	Analysed	Rotameric	Outliers	Percentiles
All	All	323/306 (106%)	317 (98%)	6 (2%)	60 17

All (6) residues with a non-rotameric sidechain are listed below:

Mol	Chain	Res	Type
1	A	497[A]	LEU
1	A	497[B]	LEU
1	C	496	ILE
2	D	26	GLN
2	D	46	HIS
2	D	50	LYS

Some sidechains can be flipped to improve hydrogen bonding and reduce clashes. All (10) such sidechains are listed below:

Mol	Chain	Res	Type
1	A	526	GLN
1	A	528	ASN
1	A	533	ASN
1	B	526	GLN
1	B	533	ASN
1	B	564	GLN
1	C	526	GLN
1	C	533	ASN
1	C	564	GLN
2	D	26	GLN

### 5.3.3 RNA [i](#)

There are no RNA molecules in this entry.

### 5.4 Non-standard residues in protein, DNA, RNA chains [i](#)

There are no non-standard protein/DNA/RNA residues in this entry.

### 5.5 Carbohydrates [i](#)

There are no monosaccharides in this entry.

## 5.6 Ligand geometry

Of 10 ligands modelled in this entry, 3 are monoatomic - leaving 7 for Mogul analysis.

In the following table, the Counts columns list the number of bonds (or angles) for which Mogul statistics could be retrieved, the number of bonds (or angles) that are observed in the model and the number of bonds (or angles) that are defined in the Chemical Component Dictionary. The Link column lists molecule types, if any, to which the group is linked. The Z score for a bond length (or angle) is the number of standard deviations the observed value is removed from the expected value. A bond length (or angle) with  $|Z| > 2$  is considered an outlier worth inspection. RMSZ is the root-mean-square of all Z scores of the bond lengths (or angles).

Mol	Type	Chain	Res	Link	Bond lengths			Bond angles		
					Counts	RMSZ	# Z  > 2	Counts	RMSZ	# Z  > 2
6	STE	B	601	-	16,19,19	0.32	0	15,19,19	0.74	0
7	PLM	C	601	-	14,17,17	0.34	0	13,17,17	0.91	0
5	EDO	D	103	-	3,3,3	0.53	0	2,2,2	0.31	0
5	EDO	D	104	-	3,3,3	0.68	0	2,2,2	0.85	0
5	EDO	C	602	-	3,3,3	0.41	0	2,2,2	0.52	0
5	EDO	A	603	-	3,3,3	0.53	0	2,2,2	0.25	0
4	ELA	A	602	-	16,19,19	1.03	1 (6%)	15,19,19	1.07	0

In the following table, the Chirals column lists the number of chiral outliers, the number of chiral centers analysed, the number of these observed in the model and the number defined in the Chemical Component Dictionary. Similar counts are reported in the Torsion and Rings columns. '-' means no outliers of that kind were identified.

Mol	Type	Chain	Res	Link	Chirals	Torsions	Rings
6	STE	B	601	-	-	9/15/17/17	-
7	PLM	C	601	-	-	6/13/15/15	-
5	EDO	D	103	-	-	0/1/1/1	-
5	EDO	D	104	-	-	1/1/1/1	-
5	EDO	C	602	-	-	0/1/1/1	-
5	EDO	A	603	-	-	0/1/1/1	-
4	ELA	A	602	-	-	8/15/17/17	-

All (1) bond length outliers are listed below:

Mol	Chain	Res	Type	Atoms	Z	Observed(Å)	Ideal(Å)
4	A	602	ELA	C10-C9	3.79	1.53	1.31

There are no bond angle outliers.

There are no chirality outliers.

All (24) torsion outliers are listed below:

Mol	Chain	Res	Type	Atoms
6	B	601	STE	C1-C2-C3-C4
5	D	104	EDO	O1-C1-C2-O2
6	B	601	STE	C7-C8-C9-C10
4	A	602	ELA	C12-C13-C14-C15
6	B	601	STE	C11-C10-C9-C8
7	C	601	PLM	C6-C7-C8-C9
6	B	601	STE	C10-C11-C12-C13
4	A	602	ELA	C10-C11-C12-C13
6	B	601	STE	C4-C5-C6-C7
7	C	601	PLM	C5-C6-C7-C8
4	A	602	ELA	C6-C7-C8-C9
6	B	601	STE	C15-C16-C17-C18
4	A	602	ELA	C15-C16-C17-C18
7	C	601	PLM	CD-CE-CF-CG
4	A	602	ELA	C11-C12-C13-C14
7	C	601	PLM	C2-C3-C4-C5
6	B	601	STE	C5-C6-C7-C8
4	A	602	ELA	C11-C10-C9-C8
4	A	602	ELA	C14-C15-C16-C17
7	C	601	PLM	C8-C9-CA-CB
6	B	601	STE	C14-C15-C16-C17
4	A	602	ELA	C9-C10-C11-C12
6	B	601	STE	C6-C7-C8-C9
7	C	601	PLM	CB-CC-CD-CE

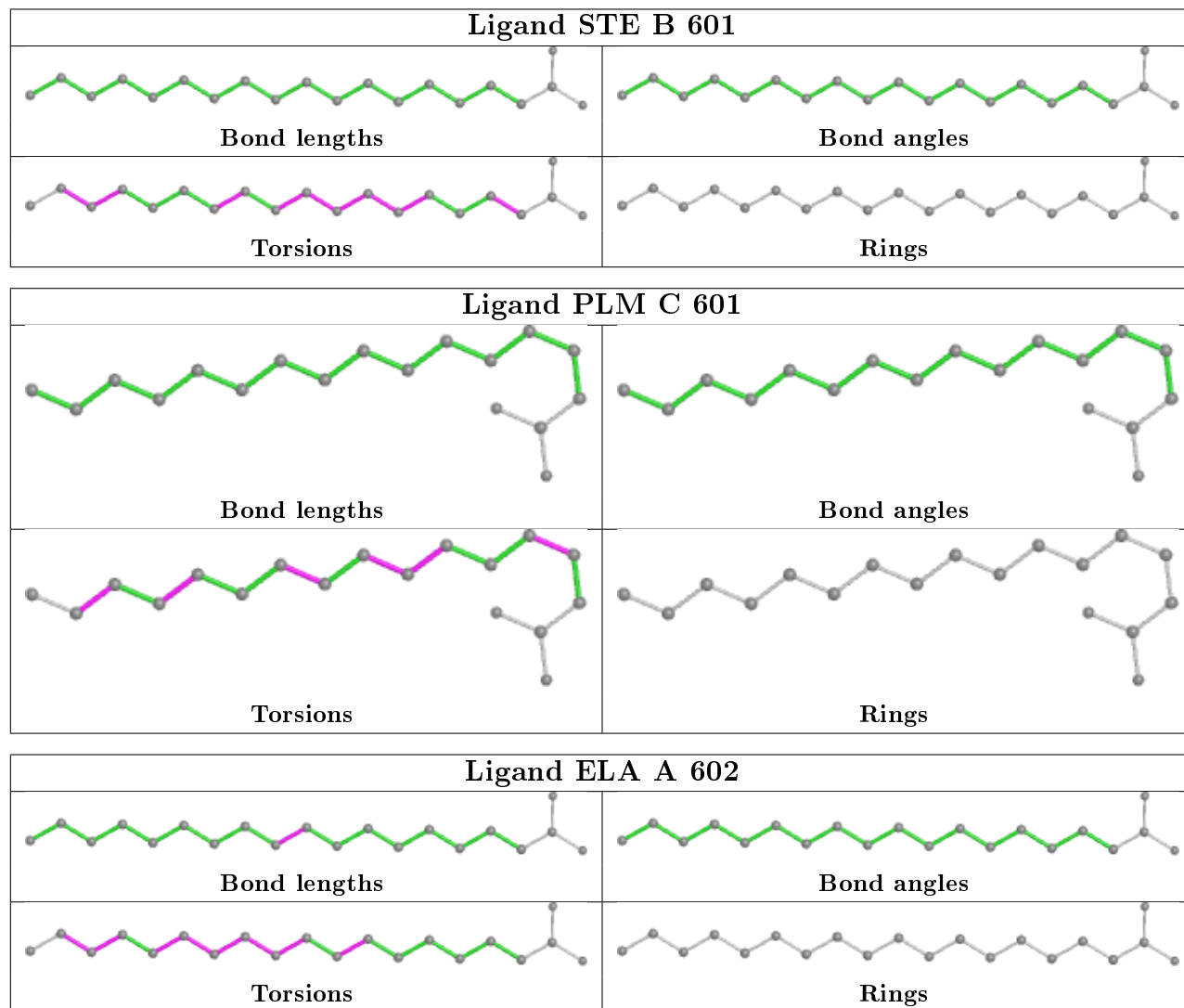
There are no ring outliers.

5 monomers are involved in 13 short contacts:

Mol	Chain	Res	Type	Clashes	Symm-Clashes
6	B	601	STE	5	0
7	C	601	PLM	4	0
5	D	104	EDO	1	0
5	C	602	EDO	1	0
4	A	602	ELA	2	0

The following is a two-dimensional graphical depiction of Mogul quality analysis of bond lengths, bond angles, torsion angles, and ring geometry for all instances of the Ligand of Interest. In addition, ligands with molecular weight > 250 and outliers as shown on the validation Tables will also be included. For torsion angles, if less than 5% of the Mogul distribution of torsion angles is within 10 degrees of the torsion angle in question, then that torsion angle is considered an outlier. Any bond that is central to one or more torsion angles identified as an outlier by Mogul will be

highlighted in the graph. For rings, the root-mean-square deviation (RMSD) between the ring in question and similar rings identified by Mogul is calculated over all ring torsion angles. If the average RMSD is greater than 60 degrees and the minimal RMSD between the ring in question and any Mogul-identified rings is also greater than 60 degrees, then that ring is considered an outlier. The outliers are highlighted in purple. The color gray indicates Mogul did not find sufficient equivalents in the CSD to analyse the geometry.



## 5.7 Other polymers [\(i\)](#)

There are no such residues in this entry.

## 5.8 Polymer linkage issues [\(i\)](#)

There are no chain breaks in this entry.



## 6 Fit of model and data [i](#)

### 6.1 Protein, DNA and RNA chains [i](#)

In the following table, the column labelled ‘#RSRZ> 2’ contains the number (and percentage) of RSRZ outliers, followed by percent RSRZ outliers for the chain as percentile scores relative to all X-ray entries and entries of similar resolution. The OWAB column contains the minimum, median, 95<sup>th</sup> percentile and maximum values of the occupancy-weighted average B-factor per residue. The column labelled ‘Q< 0.9’ lists the number of (and percentage) of residues with an average occupancy less than 0.9.

Mol	Chain	Analysed	<RSRZ>	#RSRZ>2	OWAB(Å <sup>2</sup> )	Q<0.9
1	A	92/96 (95%)	-0.28	0 <a href="#">100</a> <a href="#">100</a>	12, 17, 33, 43	0
1	B	92/96 (95%)	-0.30	0 <a href="#">100</a> <a href="#">100</a>	12, 16, 31, 35	0
1	C	92/96 (95%)	-0.20	1 (1%) <a href="#">80</a> <a href="#">78</a>	12, 16, 28, 34	0
2	D	96/96 (100%)	-0.25	2 (2%) <a href="#">63</a> <a href="#">61</a>	12, 16, 31, 52	0
All	All	372/384 (96%)	-0.26	3 (0%) <a href="#">86</a> <a href="#">84</a>	12, 16, 31, 52	0

All (3) RSRZ outliers are listed below:

Mol	Chain	Res	Type	RSRZ
2	D	51	LYS	2.6
2	D	50	LYS	2.1
1	C	496	ILE	2.1

### 6.2 Non-standard residues in protein, DNA, RNA chains [i](#)

There are no non-standard protein/DNA/RNA residues in this entry.

### 6.3 Carbohydrates [i](#)

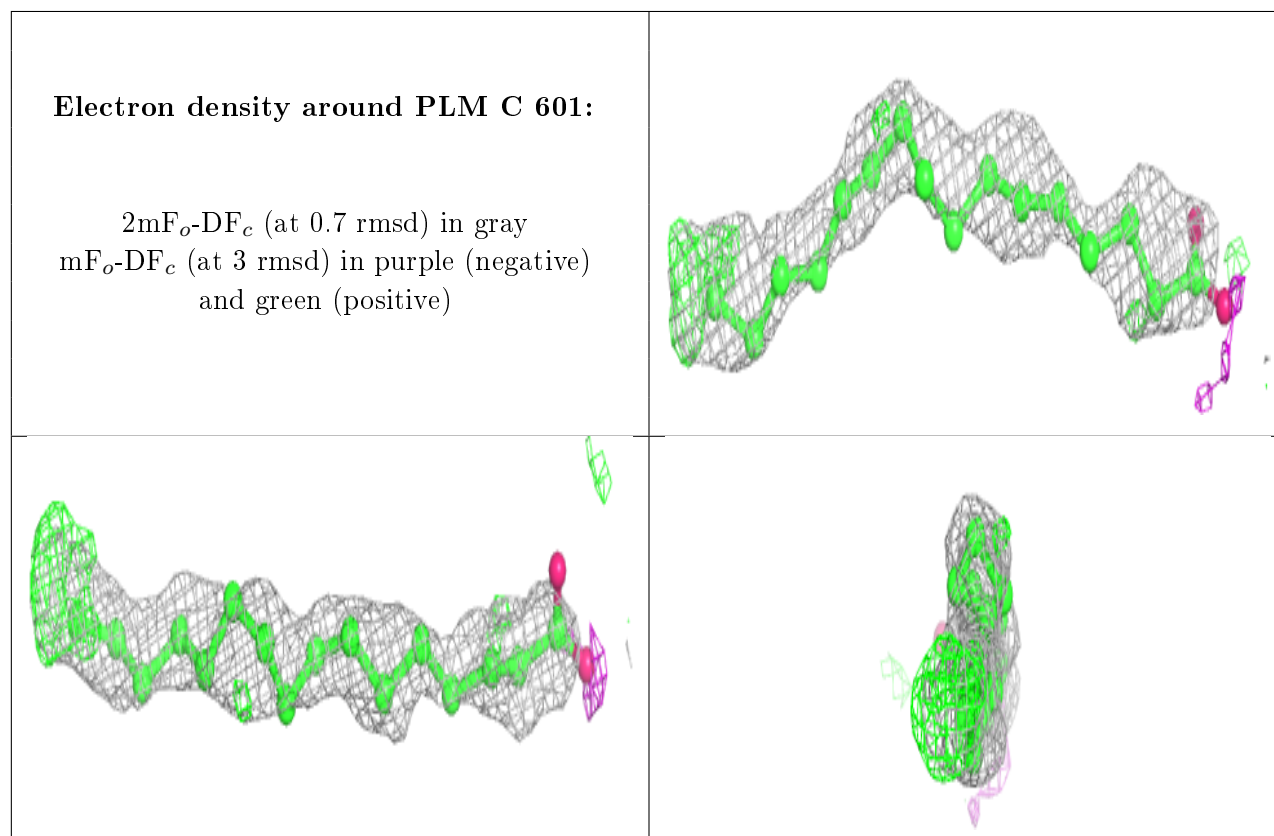
There are no monosaccharides in this entry.

### 6.4 Ligands [i](#)

In the following table, the Atoms column lists the number of modelled atoms in the group and the number defined in the chemical component dictionary. The B-factors column lists the minimum, median, 95<sup>th</sup> percentile and maximum values of B factors of atoms in the group. The column labelled ‘Q< 0.9’ lists the number of atoms with occupancy less than 0.9.

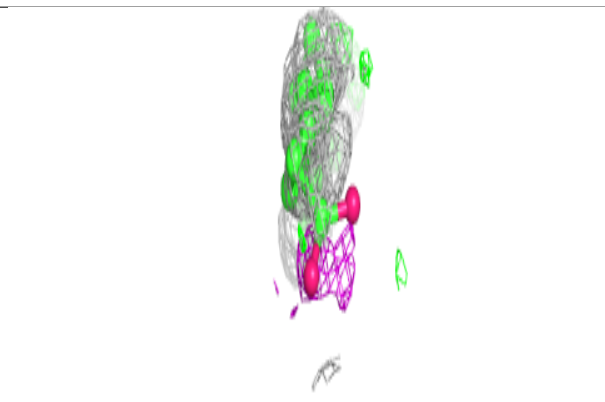
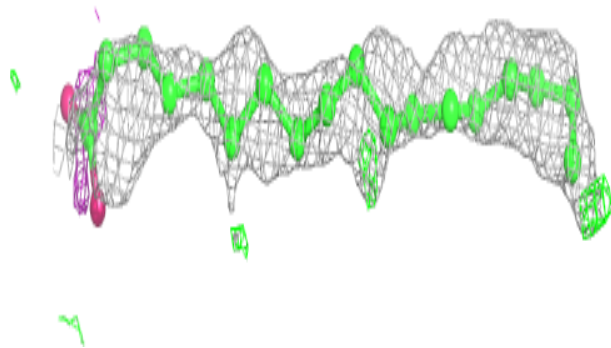
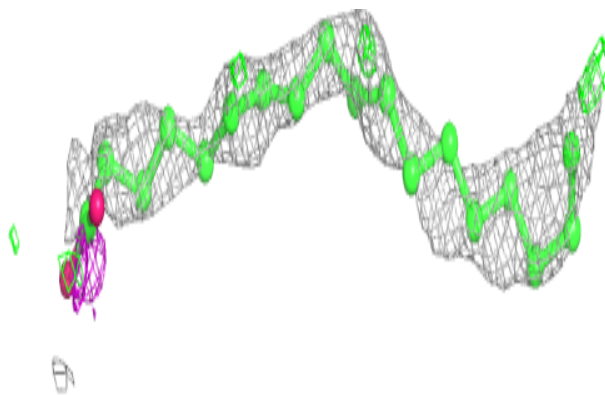
Mol	Type	Chain	Res	Atoms	RSCC	RSR	B-factors( $\text{\AA}^2$ )	Q<0.9
7	PLM	C	601	18/18	0.69	0.20	56,65,83,83	0
6	STE	B	601	20/20	0.70	0.27	45,62,74,82	0
4	ELA	A	602	20/20	0.72	0.18	43,55,86,87	0
5	EDO	D	104	4/4	0.87	0.20	30,37,39,42	0
5	EDO	C	602	4/4	0.92	0.11	28,29,30,32	0
5	EDO	D	103	4/4	0.92	0.10	32,34,38,42	0
5	EDO	A	603	4/4	0.94	0.12	30,32,34,38	0
9	NA	D	102	1/1	0.99	0.03	21,21,21,21	0
3	MG	A	601	1/1	0.99	0.04	15,15,15,15	0
8	FE	D	101	1/1	1.00	0.04	17,17,17,17	0

The following is a graphical depiction of the model fit to experimental electron density of all instances of the Ligand of Interest. In addition, ligands with molecular weight > 250 and outliers as shown on the geometry validation Tables will also be included. Each fit is shown from different orientation to approximate a three-dimensional view.

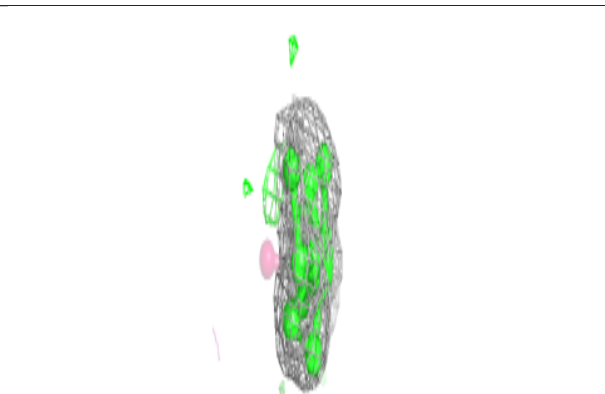
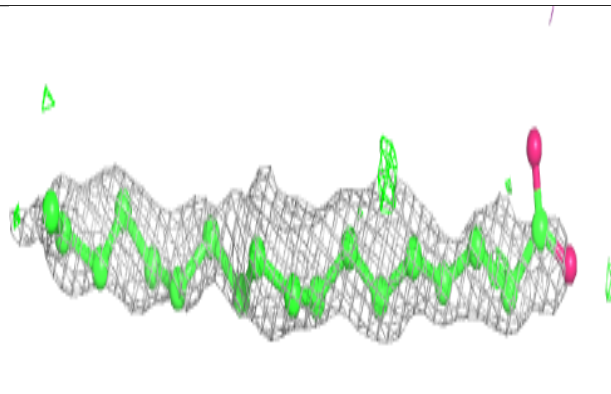
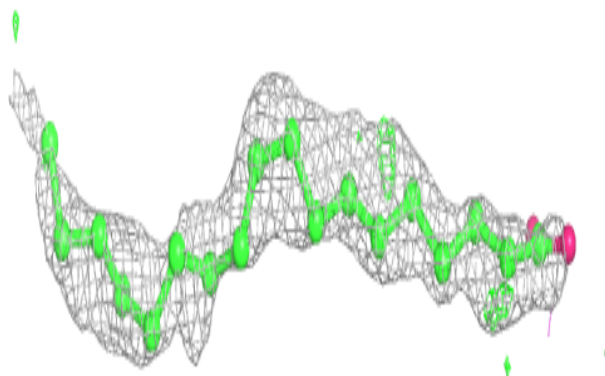


**Electron density around STE B 601:**

$2mF_o-DF_c$  (at 0.7 rmsd) in gray  
 $mF_o-DF_c$  (at 3 rmsd) in purple (negative)  
and green (positive)

**Electron density around ELA A 602:**

$2mF_o-DF_c$  (at 0.7 rmsd) in gray  
 $mF_o-DF_c$  (at 3 rmsd) in purple (negative)  
and green (positive)



## 6.5 Other polymers

There are no such residues in this entry.