



Full wwPDB X-ray Structure Validation Report ⓘ

Jun 15, 2020 – 10:52 pm BST

PDB ID : 3KOD
Title : DTD from Plasmodium falciparum in complex with D-Serine
Authors : Manickam, Y.; Bhatt, T.K.; Sharma, A.
Deposited on : 2009-11-13
Resolution : 3.00 Å(reported)

This is a Full wwPDB X-ray Structure Validation Report for a publicly released PDB entry.

We welcome your comments at validation@mail.wwpdb.org

A user guide is available at

<https://www.wwpdb.org/validation/2017/XrayValidationReportHelp>

with specific help available everywhere you see the ⓘ symbol.

The following versions of software and data (see [references ⓘ](#)) were used in the production of this report:

MolProbity : 4.02b-467
Xtriage (Phenix) : 1.13
EDS : 2.11
Percentile statistics : 20191225.v01 (using entries in the PDB archive December 25th 2019)
Refmac : 5.8.0158
CCP4 : 7.0.044 (Gargrove)
Ideal geometry (proteins) : Engh & Huber (2001)
Ideal geometry (DNA, RNA) : Parkinson et al. (1996)
Validation Pipeline (wwPDB-VP) : 2.11

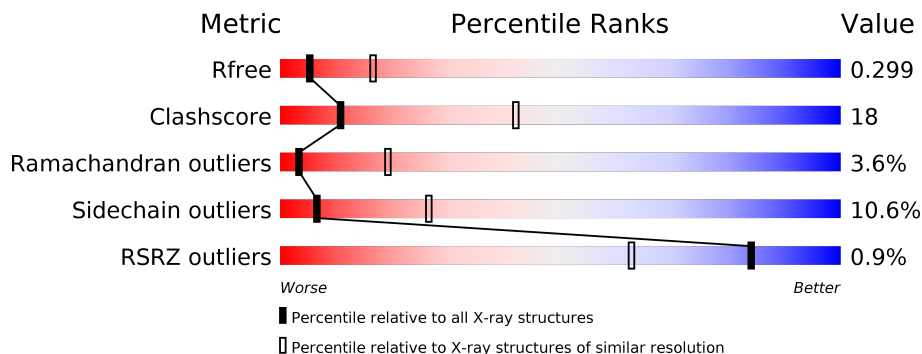
1 Overall quality at a glance i

The following experimental techniques were used to determine the structure:

X-RAY DIFFRACTION

The reported resolution of this entry is 3.00 Å.

Percentile scores (ranging between 0-100) for global validation metrics of the entry are shown in the following graphic. The table shows the number of entries on which the scores are based.



Metric	Whole archive (#Entries)	Similar resolution (#Entries, resolution range(Å))
R_{free}	130704	2092 (3.00-3.00)
Clashscore	141614	2416 (3.00-3.00)
Ramachandran outliers	138981	2333 (3.00-3.00)
Sidechain outliers	138945	2336 (3.00-3.00)
RSRZ outliers	127900	1990 (3.00-3.00)

The table below summarises the geometric issues observed across the polymeric chains and their fit to the electron density. The red, orange, yellow and green segments on the lower bar indicate the fraction of residues that contain outliers for ≥ 3 , 2, 1 and 0 types of geometric quality criteria respectively. A grey segment represents the fraction of residues that are not modelled. The numeric value for each fraction is indicated below the corresponding segment, with a dot representing fractions $\leq 5\%$. The upper red bar (where present) indicates the fraction of residues that have poor fit to the electron density. The numeric value is given above the bar.

Mol	Chain	Length	Quality of chain
1	A	164	
1	B	164	
1	C	164	
1	D	164	
1	E	164	
1	F	164	

2 Entry composition [i](#)

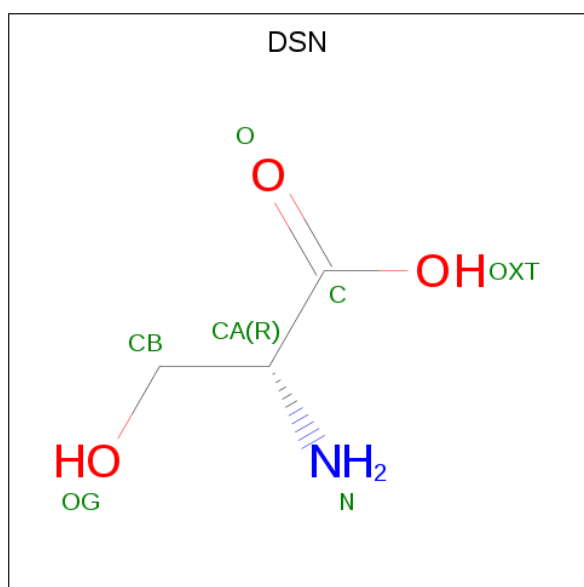
There are 2 unique types of molecules in this entry. The entry contains 7287 atoms, of which 0 are hydrogens and 0 are deuteriums.

In the tables below, the ZeroOcc column contains the number of atoms modelled with zero occupancy, the AltConf column contains the number of residues with at least one atom in alternate conformation and the Trace column contains the number of residues modelled with at most 2 atoms.

- Molecule 1 is a protein called D-tyrosyl-tRNA(Tyr) deacylase.

Mol	Chain	Residues	Atoms					ZeroOcc	AltConf	Trace
			Total	C	N	O	S			
1	A	151	Total 1218	C 783	N 206	O 226	S 3	0	0	0
1	B	157	Total 1251	C 801	N 212	O 235	S 3	0	0	0
1	C	155	Total 1202	C 774	N 204	O 221	S 3	0	0	0
1	D	151	Total 1204	C 773	N 200	O 228	S 3	0	0	0
1	E	147	Total 1177	C 756	N 196	O 222	S 3	0	0	0
1	F	151	Total 1207	C 778	N 203	O 223	S 3	0	0	0

- Molecule 2 is D-SERINE (three-letter code: DSN) (formula: C₃H₇NO₃).

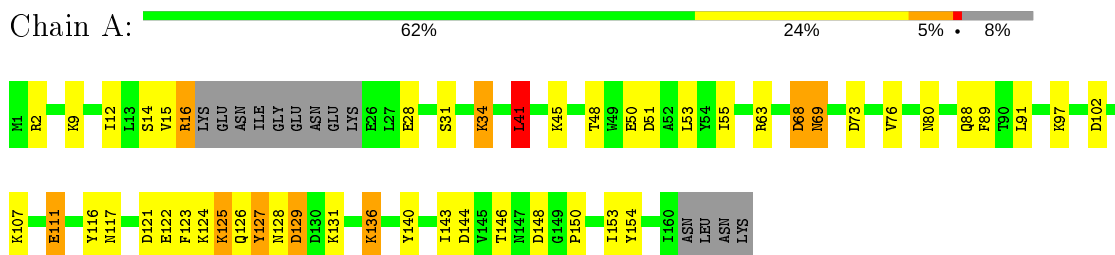


Mol	Chain	Residues	Atoms				ZeroOcc	AltConf
2	B	1	Total	C	N	O	0	0
			7	3	1	3		
2	C	1	Total	C	N	O	0	0
			7	3	1	3		
2	D	1	Total	C	N	O	0	0
			7	3	1	3		
2	D	1	Total	C	N	O	0	0
			7	3	1	3		

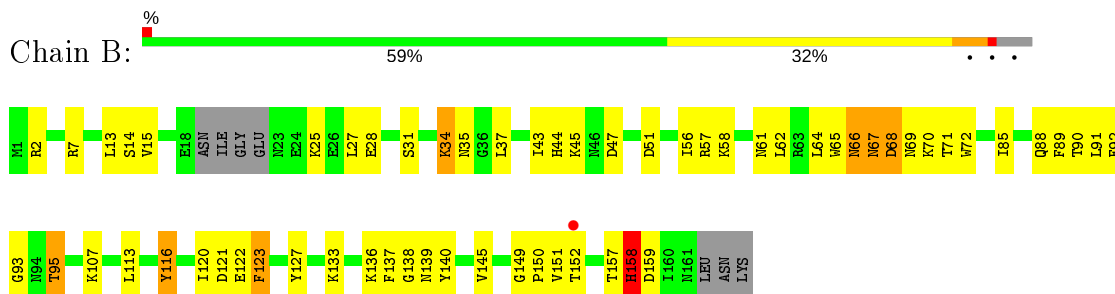
3 Residue-property plots [i](#)

These plots are drawn for all protein, RNA and DNA chains in the entry. The first graphic for a chain summarises the proportions of the various outlier classes displayed in the second graphic. The second graphic shows the sequence view annotated by issues in geometry and electron density. Residues are color-coded according to the number of geometric quality criteria for which they contain at least one outlier: green = 0, yellow = 1, orange = 2 and red = 3 or more. A red dot above a residue indicates a poor fit to the electron density ($RSRZ > 2$). Stretches of 2 or more consecutive residues without any outlier are shown as a green connector. Residues present in the sample, but not in the model, are shown in grey.

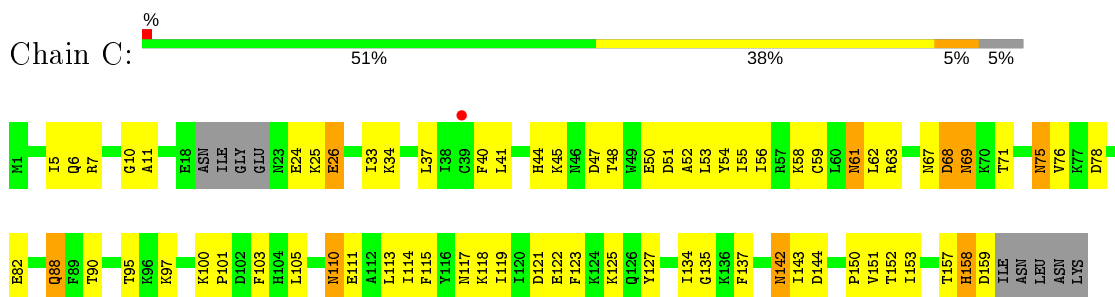
- Molecule 1: D-tyrosyl-tRNA(Tyr) deacylase



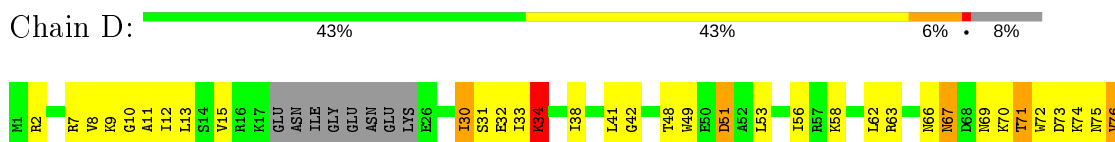
- Molecule 1: D-tyrosyl-tRNA(Tyr) deacylase



- Molecule 1: D-tyrosyl-tRNA(Tyr) deacylase



- Molecule 1: D-tyrosyl-tRNA(Tyr) deacylase



4 Data and refinement statistics

Property	Value	Source
Space group	P 1	Depositor
Cell constants a, b, c, α , β , γ	52.28Å 55.15Å 92.53Å 106.86° 101.86° 94.45°	Depositor
Resolution (Å)	30.00 – 3.00 29.30 – 2.91	Depositor EDS
% Data completeness (in resolution range)	97.8 (30.00-3.00) 97.1 (29.30-2.91)	Depositor EDS
R_{merge}	0.06	Depositor
R_{sym}	(Not available)	Depositor
$\langle I/\sigma(I) \rangle$ ¹	1.21 (at 2.90Å)	Xtrriage
Refinement program	REFMAC 5.2.0019	Depositor
R, R_{free}	0.197 , 0.305 0.203 , 0.299	Depositor DCC
R_{free} test set	1049 reflections (5.14%)	wwPDB-VP
Wilson B-factor (Å ²)	74.9	Xtrriage
Anisotropy	0.120	Xtrriage
Bulk solvent k_{sol} (e/Å ³), B_{sol} (Å ²)	0.27 , 55.4	EDS
L-test for twinning ²	$\langle L \rangle = 0.49$, $\langle L^2 \rangle = 0.33$	Xtrriage
Estimated twinning fraction	No twinning to report.	Xtrriage
F_o, F_c correlation	0.95	EDS
Total number of atoms	7287	wwPDB-VP
Average B, all atoms (Å ²)	87.0	wwPDB-VP

Xtrriage's analysis on translational NCS is as follows: *The largest off-origin peak in the Patterson function is 5.49% of the height of the origin peak. No significant pseudotranslation is detected.*

¹Intensities estimated from amplitudes.

²Theoretical values of $\langle |L| \rangle$, $\langle L^2 \rangle$ for acentric reflections are 0.5, 0.333 respectively for untwinned datasets, and 0.375, 0.2 for perfectly twinned datasets.

5 Model quality [i](#)

5.1 Standard geometry [i](#)

Bond lengths and bond angles in the following residue types are not validated in this section: DSN

The Z score for a bond length (or angle) is the number of standard deviations the observed value is removed from the expected value. A bond length (or angle) with $|Z| > 5$ is considered an outlier worth inspection. RMSZ is the root-mean-square of all Z scores of the bond lengths (or angles).

Mol	Chain	Bond lengths		Bond angles	
		RMSZ	# Z >5	RMSZ	# Z >5
1	A	0.65	0/1241	0.80	1/1681 (0.1%)
1	B	0.64	0/1274	0.76	0/1728
1	C	0.56	0/1225	0.72	0/1668
1	D	0.64	0/1227	0.74	1/1667 (0.1%)
1	E	0.53	0/1200	0.67	0/1630
1	F	0.62	0/1230	0.74	0/1669
All	All	0.61	0/7397	0.74	2/10043 (0.0%)

There are no bond length outliers.

All (2) bond angle outliers are listed below:

Mol	Chain	Res	Type	Atoms	Z	Observed(°)	Ideal(°)
1	A	41	LEU	CA-CB-CG	7.20	131.86	115.30
1	D	69	ASN	CB-CA-C	-5.32	99.76	110.40

There are no chirality outliers.

There are no planarity outliers.

5.2 Too-close contacts [i](#)

In the following table, the Non-H and H(model) columns list the number of non-hydrogen atoms and hydrogen atoms in the chain respectively. The H(added) column lists the number of hydrogen atoms added and optimized by MolProbity. The Clashes column lists the number of clashes within the asymmetric unit, whereas Symm-Clashes lists symmetry related clashes.

Mol	Chain	Non-H	H(model)	H(added)	Clashes	Symm-Clashes
1	A	1218	0	1192	33	0
1	B	1251	0	1201	46	0
1	C	1202	0	1131	49	0

Continued on next page...

Continued from previous page...

Mol	Chain	Non-H	H(model)	H(added)	Clashes	Symm-Clashes
1	D	1204	0	1152	60	0
1	E	1177	0	1131	45	0
1	F	1207	0	1173	50	0
2	B	7	0	6	1	0
2	C	7	0	6	0	0
2	D	14	0	12	0	0
All	All	7287	0	7004	261	0

The all-atom clashscore is defined as the number of clashes found per 1000 atoms (including hydrogen atoms). The all-atom clashscore for this structure is 18.

All (261) close contacts within the same asymmetric unit are listed below, sorted by their clash magnitude.

Atom-1	Atom-2	Interatomic distance (Å)	Clash overlap (Å)
1:E:61:ASN:HA	1:E:75:ASN:HD22	1.36	0.88
1:E:49:TRP:O	1:E:53:LEU:HD22	1.75	0.86
1:A:68:ASP:O	1:A:69:ASN:HB2	1.78	0.82
1:F:56:ILE:HD13	1:F:122:GLU:HB3	1.62	0.81
1:F:38:ILE:HD12	1:F:84:LEU:HD23	1.61	0.80
1:C:54:TYR:HD2	1:C:157:THR:HG22	1.48	0.78
1:F:9:LYS:HG2	1:F:148:ASP:HB2	1.65	0.78
1:B:66:ASN:HD21	2:B:165:DSN:HB2	1.49	0.77
1:E:2:ARG:HD3	1:E:154:TYR:OH	1.84	0.76
1:A:150:PRO:HG2	1:B:88:GLN:HE22	1.53	0.74
1:C:5:ILE:CG2	1:C:37:LEU:HD22	2.18	0.74
1:F:7:ARG:HD2	1:F:65:TRP:NE1	2.03	0.73
1:A:128:ASN:ND2	1:A:131:LYS:HG2	2.04	0.73
1:B:57:ARG:O	1:B:61:ASN:HB2	1.89	0.72
1:E:33:ILE:CG2	1:E:133:LYS:HG3	2.19	0.72
1:A:128:ASN:HD22	1:A:131:LYS:HG2	1.54	0.72
1:E:40:PHE:HD1	1:E:88:GLN:HG3	1.57	0.69
1:D:2:ARG:NH1	1:D:92:PHE:HA	2.07	0.69
1:F:43:ILE:HD13	1:F:115:PHE:HD2	1.56	0.69
1:B:2:ARG:HD2	1:B:92:PHE:CE1	2.28	0.69
1:E:92:PHE:HB2	1:E:106:ALA:HB2	1.74	0.68
1:D:11:ALA:HB3	1:D:33:ILE:HG12	1.74	0.68
1:C:142:ASN:C	1:C:142:ASN:HD22	1.96	0.68
1:C:5:ILE:HG22	1:C:37:LEU:HD22	1.75	0.68
1:F:14:SER:HB2	1:F:142:ASN:HB3	1.75	0.68
1:D:8:VAL:HG21	1:D:33:ILE:HD11	1.75	0.68
1:E:100:LYS:HB2	1:F:63:ARG:NH1	2.09	0.67

Continued on next page...

Continued from previous page...

Atom-1	Atom-2	Interatomic distance (Å)	Clash overlap (Å)
1:C:25:LYS:O	1:C:26:GLU:CB	2.44	0.66
1:A:148:ASP:OD1	1:B:140:TYR:OH	2.08	0.65
1:E:157:THR:O	1:E:159:ASP:N	2.30	0.65
1:F:128:ASN:OD1	1:F:130:ASP:N	2.28	0.65
1:D:88:GLN:OE1	1:D:88:GLN:HA	1.95	0.65
1:D:110:ASN:O	1:D:114:ILE:HG23	1.98	0.64
1:E:76:VAL:HG11	1:E:83:LEU:HD11	1.78	0.64
1:B:44:HIS:HB2	1:B:92:PHE:CZ	2.33	0.64
1:F:107:LYS:HD3	1:F:112:ALA:HA	1.80	0.63
1:B:136:LYS:HE2	1:B:139:ASN:OD1	1.99	0.63
1:A:45:LYS:HA	1:A:107:LYS:HG3	1.81	0.63
1:C:40:PHE:HD1	1:C:88:GLN:HG3	1.63	0.62
1:D:38:ILE:HD12	1:D:84:LEU:HD23	1.82	0.62
1:B:47:ASP:OD1	1:B:158:HIS:HE1	1.81	0.62
1:D:115:PHE:O	1:D:119:ILE:HG13	2.01	0.61
1:C:121:ASP:O	1:C:125:LYS:HB2	2.00	0.61
1:D:154:TYR:CD2	1:D:154:TYR:C	2.73	0.61
1:C:33:ILE:HB	1:C:82:GLU:HB2	1.82	0.61
1:E:33:ILE:HG22	1:E:133:LYS:HG3	1.82	0.61
1:E:13:LEU:HB3	1:E:31:SER:HB2	1.82	0.61
1:B:58:LYS:HD2	1:B:62:LEU:HD21	1.83	0.60
1:F:92:PHE:HB2	1:F:106:ALA:HB2	1.84	0.60
1:B:89:PHE:C	1:B:91:LEU:H	2.06	0.59
1:C:152:THR:O	1:D:91:LEU:HD23	2.03	0.59
1:C:115:PHE:O	1:C:118:LYS:HB2	2.03	0.58
1:C:88:GLN:HE21	1:C:88:GLN:HA	1.69	0.57
1:E:48:THR:OG1	1:E:50:GLU:HB2	2.04	0.57
1:C:143:ILE:HD12	1:D:150:PRO:HG3	1.85	0.57
1:A:68:ASP:O	1:A:69:ASN:CB	2.52	0.57
1:B:58:LYS:HD2	1:B:62:LEU:CD2	2.35	0.56
1:E:33:ILE:HD13	1:E:84:LEU:H	1.70	0.56
1:E:96:LYS:HG2	1:F:160:ILE:HD11	1.86	0.56
1:F:43:ILE:HD13	1:F:115:PHE:CD2	2.40	0.56
1:D:94:ASN:HB3	1:D:102:ASP:HB3	1.88	0.56
1:E:116:TYR:O	1:E:120:ILE:HG12	2.05	0.56
1:B:2:ARG:NH1	1:B:91:LEU:O	2.39	0.55
1:D:63:ARG:NE	1:D:73:ASP:O	2.35	0.55
1:E:157:THR:C	1:E:159:ASP:H	2.09	0.55
1:B:127:TYR:HA	1:F:35:ASN:HD21	1.70	0.55
1:C:44:HIS:CD2	1:C:158:HIS:CE1	2.95	0.55
1:B:58:LYS:O	1:B:62:LEU:HG	2.07	0.55

Continued on next page...

Continued from previous page...

Atom-1	Atom-2	Interatomic distance (Å)	Clash overlap (Å)
1:C:6:GLN:HG2	1:C:152:THR:HG23	1.89	0.55
1:C:54:TYR:CD2	1:C:157:THR:HG22	2.35	0.55
1:A:48:THR:H	1:A:51:ASP:HB2	1.71	0.54
1:C:56:ILE:HD11	1:C:119:ILE:HG23	1.89	0.54
1:D:76:VAL:HG23	1:D:81:TYR:HB2	1.88	0.54
1:A:129:ASP:OD2	1:A:129:ASP:C	2.46	0.54
1:F:107:LYS:HE3	1:F:111:GLU:HB2	1.90	0.54
1:F:44:HIS:HB2	1:F:92:PHE:CZ	2.43	0.53
1:C:10:GLY:HA2	1:C:34:LYS:O	2.09	0.53
1:E:33:ILE:HG23	1:E:133:LYS:HG3	1.89	0.53
1:A:150:PRO:HG2	1:B:88:GLN:NE2	2.23	0.53
1:D:13:LEU:HB3	1:D:31:SER:HB3	1.90	0.53
1:A:50:GLU:OE1	1:A:50:GLU:HA	2.09	0.53
1:F:113:LEU:HG	1:F:117:ASN:ND2	2.23	0.53
1:D:63:ARG:HA	1:D:74:LYS:O	2.09	0.52
1:C:142:ASN:C	1:C:142:ASN:ND2	2.62	0.52
1:E:12:ILE:HG23	1:E:32:GLU:HG3	1.92	0.52
1:D:48:THR:O	1:D:51:ASP:HB2	2.10	0.52
1:C:90:THR:HA	1:C:103:PHE:CE1	2.45	0.52
1:D:13:LEU:HD13	1:D:135:GLY:HA3	1.91	0.52
1:A:122:GLU:OE2	1:A:126:GLN:NE2	2.41	0.52
1:D:49:TRP:O	1:D:53:LEU:HD12	2.10	0.52
1:D:149:GLY:N	1:D:150:PRO:HA	2.24	0.52
1:F:124:LYS:HG2	1:F:129:ASP:HA	1.92	0.52
1:C:44:HIS:ND1	1:C:45:LYS:N	2.58	0.51
1:D:13:LEU:CD1	1:D:135:GLY:HA3	2.39	0.51
1:E:111:GLU:O	1:E:115:PHE:HB2	2.10	0.51
1:F:57:ARG:HH21	1:F:58:LYS:HE2	1.74	0.51
1:B:47:ASP:OD1	1:B:158:HIS:CE1	2.63	0.51
1:C:7:ARG:CZ	1:C:151:VAL:HG21	2.41	0.51
1:F:80:ASN:OD1	1:F:131:LYS:HE3	2.11	0.51
1:B:13:LEU:HB3	1:B:31:SER:HB2	1.92	0.51
1:C:44:HIS:ND1	1:C:105:LEU:O	2.44	0.51
1:C:68:ASP:O	1:C:69:ASN:CB	2.58	0.51
1:E:92:PHE:CB	1:E:106:ALA:HB2	2.41	0.51
1:F:13:LEU:HG	1:F:143:ILE:HG12	1.93	0.51
1:B:66:ASN:HB3	1:B:71:THR:HA	1.93	0.50
1:C:110:ASN:N	1:C:110:ASN:HD22	2.09	0.50
1:D:67:ASN:HD22	1:D:67:ASN:C	2.14	0.50
1:E:40:PHE:CD1	1:E:88:GLN:HG3	2.42	0.50
1:F:71:THR:HG1	1:F:72:TRP:HD1	1.54	0.50

Continued on next page...

Continued from previous page...

Atom-1	Atom-2	Interatomic distance (Å)	Clash overlap (Å)
1:F:39:CYS:HB2	1:F:85:ILE:CD1	2.42	0.50
1:C:40:PHE:CD1	1:C:88:GLN:HG3	2.44	0.50
1:D:13:LEU:HD11	1:D:141:MET:SD	2.51	0.50
1:A:12:ILE:O	1:A:143:ILE:HA	2.11	0.50
1:A:48:THR:O	1:A:51:ASP:N	2.44	0.50
1:C:11:ALA:HA	1:C:144:ASP:O	2.12	0.50
1:D:155:ILE:HG22	1:D:156:ASP:N	2.25	0.50
1:E:139:ASN:O	1:E:141:MET:HG3	2.11	0.50
1:E:96:LYS:HG2	1:F:160:ILE:CD1	2.42	0.50
1:D:71:THR:O	1:D:72:TRP:C	2.50	0.50
1:E:44:HIS:HB3	1:E:47:ASP:OD1	2.12	0.50
1:A:89:PHE:CD1	1:A:89:PHE:C	2.85	0.50
1:F:154:TYR:CE2	1:F:156:ASP:HB2	2.46	0.50
1:A:63:ARG:HE	1:A:73:ASP:HA	1.76	0.49
1:D:104:HIS:C	1:D:106:ALA:H	2.15	0.49
1:C:52:ALA:O	1:C:56:ILE:HG13	2.12	0.49
1:F:7:ARG:HD2	1:F:65:TRP:CD1	2.47	0.49
1:A:2:ARG:NH1	1:A:91:LEU:O	2.45	0.49
1:E:71:THR:O	1:E:72:TRP:C	2.51	0.49
1:C:75:ASN:O	1:C:78:ASP:HB2	2.12	0.49
1:D:10:GLY:HA2	1:D:34:LYS:O	2.11	0.49
1:E:139:ASN:O	1:E:140:TYR:C	2.50	0.49
1:B:127:TYR:HA	1:F:35:ASN:ND2	2.28	0.49
1:C:75:ASN:C	1:C:75:ASN:OD1	2.51	0.49
1:A:88:GLN:OE1	1:B:152:THR:N	2.46	0.48
1:A:144:ASP:HA	1:B:145:VAL:O	2.13	0.48
1:E:100:LYS:HE3	1:F:72:TRP:HB2	1.94	0.48
1:C:48:THR:OG1	1:C:50:GLU:HB2	2.13	0.48
1:A:127:TYR:CZ	1:A:131:LYS:HG3	2.49	0.48
1:D:7:ARG:HB2	1:D:151:VAL:HB	1.96	0.48
1:D:7:ARG:NH1	1:D:151:VAL:HG21	2.29	0.48
1:C:111:GLU:HA	1:C:114:ILE:HD12	1.96	0.47
1:B:37:LEU:HD21	1:B:64:LEU:HD12	1.96	0.47
1:D:66:ASN:OD1	1:D:71:THR:HA	2.14	0.47
1:C:122:GLU:HG3	1:C:122:GLU:O	2.14	0.47
1:D:108:GLU:HG2	1:D:109:PRO:HD2	1.96	0.47
1:A:41:LEU:HD23	1:A:55:ILE:HG21	1.96	0.47
1:D:89:PHE:CD1	1:D:89:PHE:C	2.87	0.47
1:F:128:ASN:OD1	1:F:128:ASN:C	2.52	0.47
1:B:157:THR:C	1:B:159:ASP:H	2.18	0.47
1:F:13:LEU:CD1	1:F:84:LEU:HD11	2.45	0.47

Continued on next page...

Continued from previous page...

Atom-1	Atom-2	Interatomic distance (Å)	Clash overlap (Å)
1:F:6:GLN:HA	1:F:151:VAL:O	2.14	0.47
1:C:7:ARG:HB2	1:C:151:VAL:HB	1.96	0.47
1:C:144:ASP:OD1	1:D:146:THR:HG23	2.15	0.47
1:D:49:TRP:CD1	1:D:53:LEU:HD11	2.50	0.46
1:E:12:ILE:HG22	1:E:29:ILE:CG2	2.45	0.46
1:A:116:TYR:O	1:A:117:ASN:C	2.53	0.46
1:A:41:LEU:HD13	1:A:41:LEU:O	2.15	0.46
1:D:9:LYS:HG3	1:D:148:ASP:HB2	1.97	0.46
1:B:122:GLU:OE1	1:B:122:GLU:HA	2.15	0.46
1:C:58:LYS:O	1:C:59:CYS:C	2.54	0.46
1:C:113:LEU:HD12	1:C:117:ASN:ND2	2.31	0.46
1:D:41:LEU:HD12	1:D:42:GLY:H	1.81	0.46
1:D:58:LYS:O	1:D:62:LEU:HG	2.16	0.46
1:A:9:LYS:HB2	1:A:146:THR:CG2	2.46	0.46
1:B:89:PHE:C	1:B:91:LEU:N	2.70	0.46
1:B:89:PHE:O	1:B:91:LEU:N	2.49	0.46
1:F:93:GLY:HA2	1:F:102:ASP:O	2.16	0.46
1:B:67:ASN:O	1:B:70:LYS:N	2.49	0.45
1:D:12:ILE:HG12	1:D:32:GLU:HG2	1.98	0.45
1:F:111:GLU:HG3	1:F:111:GLU:H	1.60	0.45
1:B:138:GLY:C	1:B:139:ASN:HD22	2.20	0.45
1:B:34:LYS:HD3	1:B:34:LYS:HA	1.56	0.45
1:A:136:LYS:HA	1:A:136:LYS:HD2	1.79	0.45
1:A:88:GLN:NE2	1:B:150:PRO:HG2	2.31	0.45
1:F:83:LEU:HD12	1:F:83:LEU:N	2.31	0.45
1:B:14:SER:HA	1:B:28:GLU:O	2.17	0.45
1:D:66:ASN:HA	1:D:70:LYS:O	2.16	0.45
1:F:1:MET:H1	1:F:47:ASP:CG	2.19	0.45
1:D:128:ASN:OD1	1:D:129:ASP:N	2.49	0.45
1:E:42:GLY:C	1:E:92:PHE:HE2	2.21	0.45
1:D:147:ASN:HB3	1:D:150:PRO:HB3	1.98	0.44
1:E:124:LYS:HG2	1:E:129:ASP:HA	2.00	0.44
1:B:113:LEU:HB2	1:B:137:PHE:CD2	2.52	0.44
1:B:71:THR:O	1:B:72:TRP:C	2.55	0.44
1:C:44:HIS:HB3	1:C:47:ASP:OD1	2.16	0.44
1:D:58:LYS:HA	1:D:58:LYS:HD3	1.80	0.44
1:E:55:ILE:O	1:E:56:ILE:C	2.54	0.44
1:F:108:GLU:HA	1:F:109:PRO:HD3	1.80	0.44
1:D:127:TYR:HB3	1:D:132:ILE:HD11	1.98	0.44
1:F:44:HIS:O	1:F:46:ASN:N	2.50	0.44
1:B:7:ARG:HB2	1:B:151:VAL:HB	1.99	0.44

Continued on next page...

Continued from previous page...

Atom-1	Atom-2	Interatomic distance (Å)	Clash overlap (Å)
1:B:37:LEU:HG	1:B:65:TRP:HH2	1.82	0.44
1:F:92:PHE:O	1:F:94:ASN:N	2.49	0.44
1:E:11:ALA:HA	1:E:144:ASP:O	2.18	0.44
1:D:13:LEU:HD13	1:D:135:GLY:CA	2.48	0.43
1:D:2:ARG:HH11	1:D:92:PHE:HA	1.83	0.43
1:F:1:MET:CB	1:F:42:GLY:O	2.66	0.43
1:F:56:ILE:HD11	1:F:119:ILE:HG23	2.00	0.43
1:E:77:LYS:HA	1:E:127:TYR:CE1	2.52	0.43
1:A:15:VAL:O	1:A:16:ARG:C	2.57	0.43
1:F:139:ASN:O	1:F:141:MET:HE2	2.19	0.43
1:A:124:LYS:HB3	1:A:129:ASP:HB2	2.01	0.43
1:A:122:GLU:HA	1:A:125:LYS:HB2	2.01	0.43
1:D:124:LYS:HA	1:D:132:ILE:HG13	2.00	0.43
1:D:155:ILE:CG2	1:D:156:ASP:N	2.82	0.43
1:C:56:ILE:HA	1:C:123:PHE:CZ	2.54	0.42
1:D:34:LYS:HD3	1:D:34:LYS:HA	1.70	0.42
1:C:6:GLN:HA	1:C:151:VAL:O	2.19	0.42
1:C:61:ASN:HA	1:C:61:ASN:HD22	1.68	0.42
1:E:67:ASN:HB2	1:E:74:LYS:HG2	2.01	0.42
1:F:6:GLN:HB2	1:F:38:ILE:CG2	2.49	0.42
1:C:63:ARG:NH2	1:D:100:LYS:HD2	2.35	0.42
1:D:63:ARG:HA	1:D:75:ASN:HA	2.01	0.42
1:C:150:PRO:C	1:D:88:GLN:HE22	2.23	0.42
1:B:95:THR:O	1:B:95:THR:OG1	2.37	0.42
1:A:2:ARG:HG2	1:A:154:TYR:OH	2.20	0.42
1:C:157:THR:C	1:C:159:ASP:H	2.23	0.42
1:B:43:ILE:CG2	1:B:107:LYS:HD2	2.50	0.42
1:B:34:LYS:HB3	1:B:35:ASN:H	1.74	0.42
1:B:68:ASP:HB2	1:B:69:ASN:H	1.38	0.42
1:E:3:VAL:CG1	1:E:55:ILE:HD12	2.50	0.42
1:E:69:ASN:C	1:E:69:ASN:ND2	2.72	0.42
1:F:120:ILE:CD1	1:F:134:ILE:CG2	2.97	0.42
1:B:116:TYR:O	1:B:120:ILE:HG12	2.19	0.41
1:D:116:TYR:HD2	1:D:117:ASN:OD1	2.02	0.41
1:D:41:LEU:O	1:D:88:GLN:N	2.34	0.41
1:C:134:ILE:HB	1:C:135:GLY:H	1.74	0.41
1:E:128:ASN:C	1:E:128:ASN:OD1	2.59	0.41
1:C:48:THR:O	1:C:51:ASP:N	2.53	0.41
1:E:150:PRO:HG2	1:F:88:GLN:OE1	2.20	0.41
1:E:62:LEU:HD23	1:F:99:ASN:HA	2.03	0.41
1:A:140:TYR:CE1	1:B:149:GLY:HA2	2.55	0.41

Continued on next page...

Continued from previous page...

Atom-1	Atom-2	Interatomic distance (Å)	Clash overlap (Å)
1:B:56:ILE:HG23	1:B:123:PHE:CD1	2.55	0.41
1:D:15:VAL:HG22	1:D:30:ILE:CG2	2.51	0.41
1:D:102:ASP:OD1	1:D:104:HIS:CE1	2.73	0.41
1:E:108:GLU:HA	1:E:109:PRO:HD3	1.99	0.41
1:F:15:VAL:HB	1:F:16:ARG:H	1.66	0.41
1:A:107:LYS:HD3	1:A:111:GLU:HB2	2.03	0.41
1:A:28:GLU:O	1:A:28:GLU:HG3	2.20	0.41
1:E:44:HIS:CD2	1:E:105:LEU:O	2.74	0.41
1:F:56:ILE:HG23	1:F:123:PHE:CD1	2.55	0.41
1:E:157:THR:OG1	1:E:158:HIS:HD2	2.04	0.41
1:E:68:ASP:O	1:E:70:LYS:N	2.50	0.41
1:D:102:ASP:OD1	1:D:104:HIS:NE2	2.54	0.41
1:B:15:VAL:O	1:B:27:LEU:HA	2.21	0.41
1:B:88:GLN:O	1:B:91:LEU:HD12	2.20	0.41
1:C:5:ILE:HB	1:C:153:ILE:HB	2.02	0.41
1:C:63:ARG:HH22	1:D:100:LYS:HD2	1.86	0.41
1:D:56:ILE:HG23	1:D:123:PHE:CD1	2.56	0.41
1:B:2:ARG:HD2	1:B:92:PHE:CD1	2.55	0.40
1:E:57:ARG:O	1:E:59:CYS:N	2.54	0.40
1:F:13:LEU:HD12	1:F:84:LEU:HD21	2.03	0.40
1:D:122:GLU:O	1:D:126:GLN:N	2.54	0.40
1:F:94:ASN:HB3	1:F:102:ASP:HB3	2.02	0.40
1:F:10:GLY:HA2	1:F:33:ILE:O	2.21	0.40
1:B:92:PHE:O	1:B:93:GLY:C	2.59	0.40
1:C:62:LEU:HD23	1:D:99:ASN:HA	2.03	0.40
1:D:104:HIS:O	1:D:106:ALA:N	2.54	0.40
1:E:56:ILE:O	1:E:60:LEU:HD12	2.21	0.40
1:F:139:ASN:O	1:F:141:MET:CE	2.69	0.40
1:C:100:LYS:HA	1:C:101:PRO:HD3	1.89	0.40

There are no symmetry-related clashes.

5.3 Torsion angles [i](#)

5.3.1 Protein backbone [i](#)

In the following table, the Percentiles column shows the percent Ramachandran outliers of the chain as a percentile score with respect to all X-ray entries followed by that with respect to entries of similar resolution.

The Analysed column shows the number of residues for which the backbone conformation was analysed, and the total number of residues.

Mol	Chain	Analysed	Favoured	Allowed	Outliers	Percentiles	
1	A	147/164 (90%)	123 (84%)	18 (12%)	6 (4%)	3	16
1	B	153/164 (93%)	133 (87%)	15 (10%)	5 (3%)	4	21
1	C	151/164 (92%)	124 (82%)	19 (13%)	8 (5%)	2	11
1	D	147/164 (90%)	115 (78%)	28 (19%)	4 (3%)	5	26
1	E	143/164 (87%)	114 (80%)	24 (17%)	5 (4%)	3	20
1	F	147/164 (90%)	121 (82%)	22 (15%)	4 (3%)	5	26
All	All	888/984 (90%)	730 (82%)	126 (14%)	32 (4%)	3	19

All (32) Ramachandran outliers are listed below:

Mol	Chain	Res	Type
1	A	97	LYS
1	C	24	GLU
1	C	26	GLU
1	C	69	ASN
1	E	68	ASP
1	E	137	PHE
1	E	158	HIS
1	F	45	LYS
1	A	68	ASP
1	A	69	ASN
1	B	25	LYS
1	B	90	THR
1	C	68	ASP
1	C	137	PHE
1	F	93	GLY
1	A	34	LYS
1	C	55	ILE
1	C	97	LYS
1	D	105	LEU
1	A	80	ASN
1	B	45	LYS
1	B	158	HIS
1	C	158	HIS
1	E	55	ILE
1	E	58	LYS
1	F	101	PRO
1	A	125	LYS
1	D	34	LYS
1	D	51	ASP
1	B	34	LYS

Continued on next page...

Continued from previous page...

Mol	Chain	Res	Type
1	F	67	ASN
1	D	109	PRO

5.3.2 Protein sidechains [i](#)

In the following table, the Percentiles column shows the percent sidechain outliers of the chain as a percentile score with respect to all X-ray entries followed by that with respect to entries of similar resolution.

The Analysed column shows the number of residues for which the sidechain conformation was analysed, and the total number of residues.

Mol	Chain	Analysed	Rotameric	Outliers	Percentiles
1	A	131/151 (87%)	116 (88%)	15 (12%)	5 24
1	B	132/151 (87%)	121 (92%)	11 (8%)	11 39
1	C	121/151 (80%)	109 (90%)	12 (10%)	8 30
1	D	128/151 (85%)	113 (88%)	15 (12%)	5 22
1	E	126/151 (83%)	108 (86%)	18 (14%)	3 15
1	F	128/151 (85%)	118 (92%)	10 (8%)	12 42
All	All	766/906 (84%)	685 (89%)	81 (11%)	6 26

All (81) residues with a non-rotameric sidechain are listed below:

Mol	Chain	Res	Type
1	A	14	SER
1	A	16	ARG
1	A	31	SER
1	A	34	LYS
1	A	41	LEU
1	A	53	LEU
1	A	76	VAL
1	A	102	ASP
1	A	111	GLU
1	A	121	ASP
1	A	123	PHE
1	A	127	TYR
1	A	129	ASP
1	A	136	LYS
1	A	153	ILE
1	B	51	ASP

Continued on next page...

Continued from previous page...

Mol	Chain	Res	Type
1	B	66	ASN
1	B	67	ASN
1	B	68	ASP
1	B	85	ILE
1	B	95	THR
1	B	116	TYR
1	B	121	ASP
1	B	123	PHE
1	B	133	LYS
1	B	158	HIS
1	C	41	LEU
1	C	53	LEU
1	C	61	ASN
1	C	67	ASN
1	C	71	THR
1	C	75	ASN
1	C	76	VAL
1	C	88	GLN
1	C	95	THR
1	C	110	ASN
1	C	127	TYR
1	C	142	ASN
1	D	30	ILE
1	D	34	LYS
1	D	67	ASN
1	D	71	THR
1	D	76	VAL
1	D	89	PHE
1	D	90	THR
1	D	99	ASN
1	D	114	ILE
1	D	118	LYS
1	D	123	PHE
1	D	130	ASP
1	D	142	ASN
1	D	157	THR
1	D	158	HIS
1	E	12	ILE
1	E	15	VAL
1	E	41	LEU
1	E	48	THR
1	E	53	LEU

Continued on next page...

Continued from previous page...

Mol	Chain	Res	Type
1	E	57	ARG
1	E	59	CYS
1	E	69	ASN
1	E	79	LEU
1	E	80	ASN
1	E	95	THR
1	E	105	LEU
1	E	123	PHE
1	E	129	ASP
1	E	130	ASP
1	E	134	ILE
1	E	142	ASN
1	E	156	ASP
1	F	9	LYS
1	F	12	ILE
1	F	15	VAL
1	F	28	GLU
1	F	48	THR
1	F	53	LEU
1	F	67	ASN
1	F	111	GLU
1	F	121	ASP
1	F	128	ASN

Some sidechains can be flipped to improve hydrogen bonding and reduce clashes. All (34) such sidechains are listed below:

Mol	Chain	Res	Type
1	A	35	ASN
1	A	67	ASN
1	A	69	ASN
1	A	80	ASN
1	A	99	ASN
1	A	139	ASN
1	A	142	ASN
1	B	67	ASN
1	B	88	GLN
1	B	99	ASN
1	B	158	HIS
1	C	61	ASN
1	C	80	ASN
1	C	88	GLN
1	C	110	ASN

Continued on next page...

Continued from previous page...

Mol	Chain	Res	Type
1	C	117	ASN
1	C	142	ASN
1	D	67	ASN
1	D	99	ASN
1	D	126	GLN
1	D	142	ASN
1	D	147	ASN
1	E	46	ASN
1	E	61	ASN
1	E	69	ASN
1	E	80	ASN
1	E	117	ASN
1	E	139	ASN
1	E	158	HIS
1	F	35	ASN
1	F	67	ASN
1	F	99	ASN
1	F	117	ASN
1	F	139	ASN

5.3.3 RNA [i](#)

There are no RNA molecules in this entry.

5.4 Non-standard residues in protein, DNA, RNA chains [i](#)

There are no non-standard protein/DNA/RNA residues in this entry.

5.5 Carbohydrates [i](#)

There are no carbohydrates in this entry.

5.6 Ligand geometry [i](#)

4 ligands are modelled in this entry.

There are no bond length outliers.

There are no bond angle outliers.

There are no chirality outliers.

There are no torsion outliers.

There are no ring outliers.

No monomer is involved in short contacts.

5.7 Other polymers [i](#)

There are no such residues in this entry.

5.8 Polymer linkage issues [i](#)

There are no chain breaks in this entry.

6 Fit of model and data [i](#)

6.1 Protein, DNA and RNA chains [i](#)

In the following table, the column labelled '#RSRZ> 2' contains the number (and percentage) of RSRZ outliers, followed by percent RSRZ outliers for the chain as percentile scores relative to all X-ray entries and entries of similar resolution. The OWAB column contains the minimum, median, 95th percentile and maximum values of the occupancy-weighted average B-factor per residue. The column labelled 'Q< 0.9' lists the number of (and percentage) of residues with an average occupancy less than 0.9.

Mol	Chain	Analysed	<RSRZ>	#RSRZ>2	OWAB(Å ²)	Q<0.9
1	A	151/164 (92%)	-0.52	0 100 100	60, 76, 89, 98	1 (0%)
1	B	157/164 (95%)	-0.31	1 (0%) 89 72	60, 75, 96, 99	2 (1%)
1	C	155/164 (94%)	-0.38	1 (0%) 89 72	67, 94, 114, 121	1 (0%)
1	D	151/164 (92%)	-0.43	0 100 100	62, 85, 114, 119	2 (1%)
1	E	147/164 (89%)	-0.23	4 (2%) 54 26	79, 102, 125, 128	1 (0%)
1	F	151/164 (92%)	-0.33	2 (1%) 77 51	67, 87, 116, 120	1 (0%)
All	All	912/984 (92%)	-0.37	8 (0%) 84 63	60, 85, 117, 128	8 (0%)

All (8) RSRZ outliers are listed below:

Mol	Chain	Res	Type	RSRZ
1	E	152	THR	2.8
1	E	39	CYS	2.4
1	C	39	CYS	2.4
1	B	152	THR	2.3
1	E	15	VAL	2.2
1	F	39	CYS	2.2
1	E	4	VAL	2.2
1	F	6	GLN	2.1

6.2 Non-standard residues in protein, DNA, RNA chains [i](#)

There are no non-standard protein/DNA/RNA residues in this entry.

6.3 Carbohydrates [i](#)

There are no carbohydrates in this entry.

6.4 Ligands [i](#)

In the following table, the Atoms column lists the number of modelled atoms in the group and the number defined in the chemical component dictionary. The B-factors column lists the minimum, median, 95th percentile and maximum values of B factors of atoms in the group. The column labelled 'Q<0.9' lists the number of atoms with occupancy less than 0.9.

Mol	Type	Chain	Res	Atoms	RSCC	RSR	B-factors(Å ²)	Q<0.9
2	DSN	B	165	7/7	0.63	0.35	100,102,102,102	0
2	DSN	D	166	7/7	0.85	0.48	102,102,102,102	0
2	DSN	C	165	7/7	0.86	0.28	105,105,105,105	0
2	DSN	D	165	7/7	0.90	0.28	131,131,131,131	0

6.5 Other polymers [i](#)

There are no such residues in this entry.