



Full wwPDB X-ray Structure Validation Report ⓘ

Jun 19, 2020 – 08:12 pm BST

PDB ID : 1KOR
Title : Crystal Structure of Thermus thermophilus HB8 Argininosuccinate Synthetase in complex with inhibitors
Authors : Goto, M.; Nakajima, Y.; Hirotsu, K.; RIKEN Structural Genomics/Proteomics Initiative (RSGI)
Deposited on : 2001-12-22
Resolution : 1.95 Å(reported)

This is a Full wwPDB X-ray Structure Validation Report for a publicly released PDB entry.

We welcome your comments at validation@mail.wwpdb.org

A user guide is available at

<https://www.wwpdb.org/validation/2017/XrayValidationReportHelp>

with specific help available everywhere you see the ⓘ symbol.

The following versions of software and data (see [references ⓘ](#)) were used in the production of this report:

MolProbity : 4.02b-467
Mogul : 1.8.5 (274361), CSD as541be (2020)
Xtriage (Phenix) : 1.13
EDS : 2.11
buster-report : 1.1.7 (2018)
Percentile statistics : 20191225.v01 (using entries in the PDB archive December 25th 2019)
Refmac : 5.8.0158
CCP4 : 7.0.044 (Gargrove)
Ideal geometry (proteins) : Engh & Huber (2001)
Ideal geometry (DNA, RNA) : Parkinson et al. (1996)
Validation Pipeline (wwPDB-VP) : 2.11

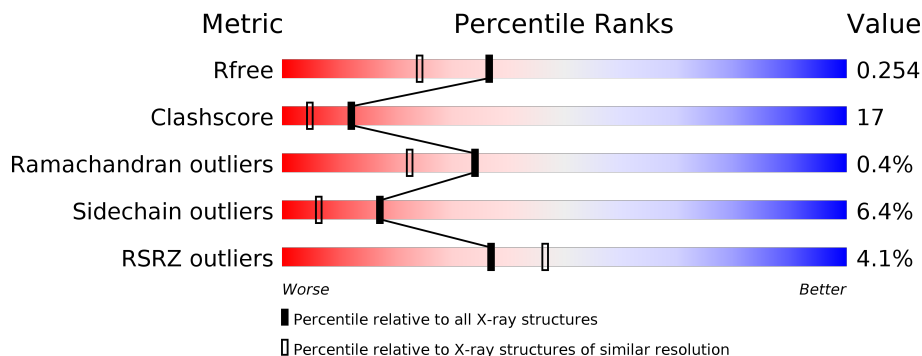
1 Overall quality at a glance i

The following experimental techniques were used to determine the structure:

X-RAY DIFFRACTION

The reported resolution of this entry is 1.95 Å.

Percentile scores (ranging between 0-100) for global validation metrics of the entry are shown in the following graphic. The table shows the number of entries on which the scores are based.



Metric	Whole archive (#Entries)	Similar resolution (#Entries, resolution range(Å))
R_{free}	130704	2580 (1.96-1.96)
Clashscore	141614	2705 (1.96-1.96)
Ramachandran outliers	138981	2678 (1.96-1.96)
Sidechain outliers	138945	2678 (1.96-1.96)
RSRZ outliers	127900	2539 (1.96-1.96)

The table below summarises the geometric issues observed across the polymeric chains and their fit to the electron density. The red, orange, yellow and green segments on the lower bar indicate the fraction of residues that contain outliers for ≥ 3 , 2, 1 and 0 types of geometric quality criteria respectively. A grey segment represents the fraction of residues that are not modelled. The numeric value for each fraction is indicated below the corresponding segment, with a dot representing fractions $\leq 5\%$. The upper red bar (where present) indicates the fraction of residues that have poor fit to the electron density. The numeric value is given above the bar.

Mol	Chain	Length	Quality of chain
1	A	400	3% (Poor fit) 70% (0 outliers), 22% (1 outlier), 5% (2 outliers)
1	B	400	3% (Poor fit) 73% (0 outliers), 21% (1 outlier), 2% (2 outliers)
1	C	400	7% (Poor fit) 66% (0 outliers), 27% (1 outlier), 7% (2 outliers)
1	D	400	3% (Poor fit) 65% (0 outliers), 29% (1 outlier), 6% (2 outliers)

2 Entry composition [i](#)

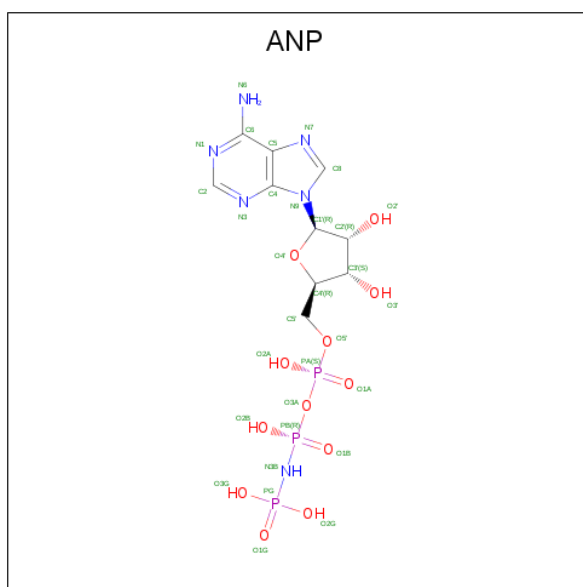
There are 5 unique types of molecules in this entry. The entry contains 13218 atoms, of which 0 are hydrogens and 0 are deuteriums.

In the tables below, the ZeroOcc column contains the number of atoms modelled with zero occupancy, the AltConf column contains the number of residues with at least one atom in alternate conformation and the Trace column contains the number of residues modelled with at most 2 atoms.

- Molecule 1 is a protein called Argininosuccinate Synthetase.

Mol	Chain	Residues	Atoms					ZeroOcc	AltConf	Trace
			Total	C	N	O	S			
1	A	380	Total 3017	C 1931	N 526	O 551	S 9	0	0	0
1	B	386	Total 3066	C 1963	N 533	O 561	S 9	0	0	0
1	C	386	Total 3066	C 1963	N 533	O 561	S 9	0	0	0
1	D	386	Total 3066	C 1963	N 533	O 561	S 9	0	0	0

- Molecule 2 is PHOSPHOAMINOPHOSPHONIC ACID-ADENYLATE ESTER (three-letter code: ANP) (formula: $C_{10}H_{17}N_6O_{12}P_3$).



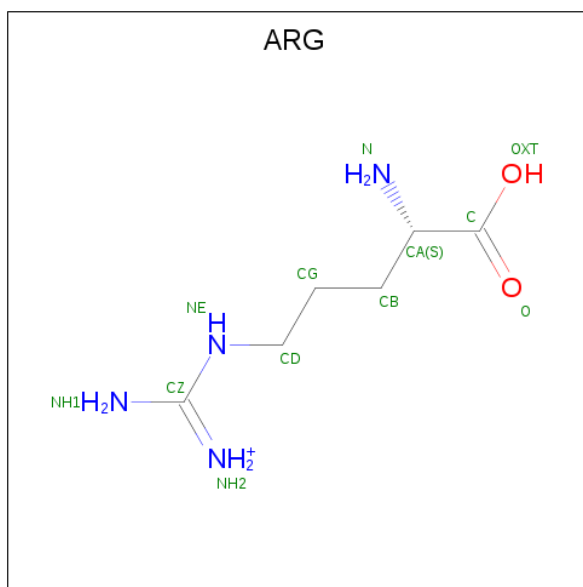
Mol	Chain	Residues	Atoms				ZeroOcc	AltConf	
			Total	C	N	O			P
2	A	1	Total 31	C 10	N 6	O 12	P 3	0	0
2	B	1	Total 31	C 10	N 6	O 12	P 3	0	0

Continued on next page...

Continued from previous page...

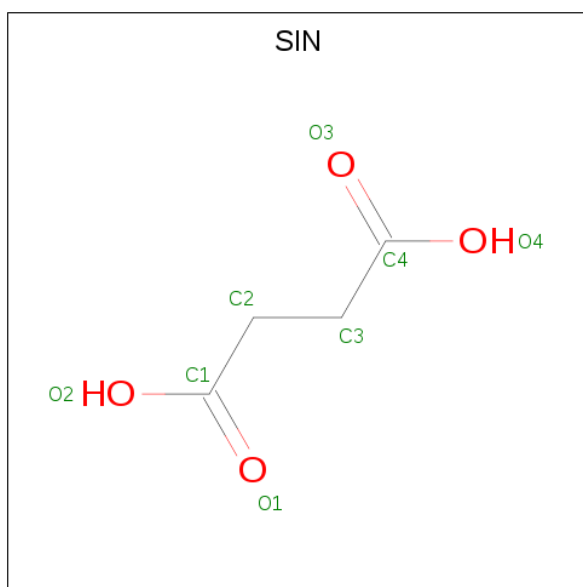
Mol	Chain	Residues	Atoms				ZeroOcc	AltConf	
2	C	1	Total	C	N	O	P	0	0
			31	10	6	12	3		
2	D	1	Total	C	N	O	P	0	0
			31	10	6	12	3		

- Molecule 3 is ARGinine (three-letter code: ARG) (formula: C₆H₁₅N₄O₂).



Mol	Chain	Residues	Atoms				ZeroOcc	AltConf
3	A	1	Total	C	N	O	0	0
			12	6	4	2		
3	B	1	Total	C	N	O	0	0
			12	6	4	2		
3	C	1	Total	C	N	O	0	0
			12	6	4	2		
3	D	1	Total	C	N	O	0	0
			12	6	4	2		

- Molecule 4 is SUCCINIC ACID (three-letter code: SIN) (formula: C₄H₆O₄).



Mol	Chain	Residues	Atoms	ZeroOcc	AltConf
4	A	1	Total C O 8 4 4	0	0
4	B	1	Total C O 8 4 4	0	0
4	C	1	Total C O 8 4 4	0	0
4	D	1	Total C O 8 4 4	0	0

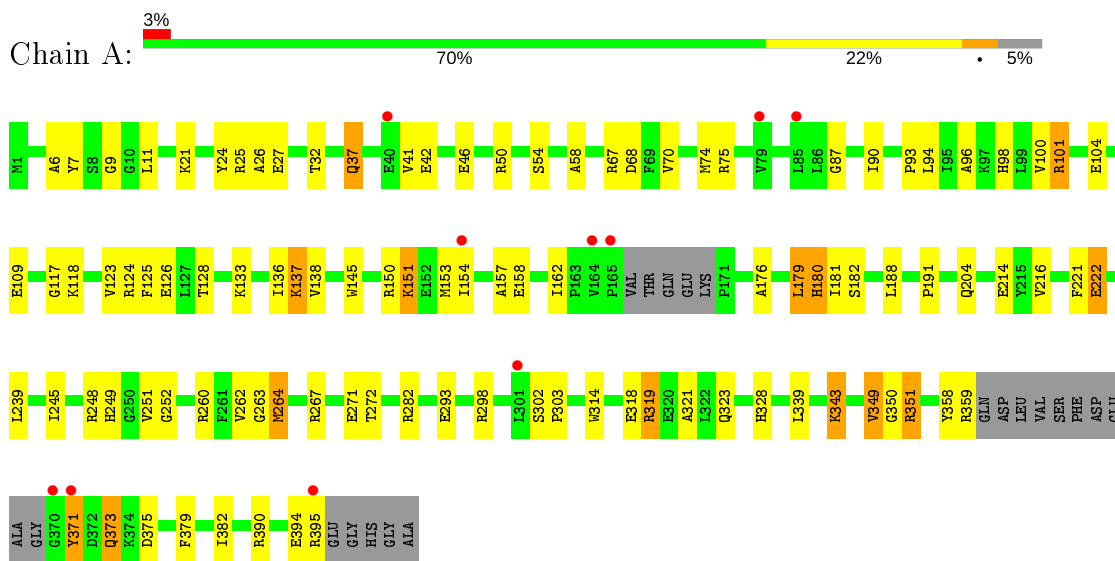
- Molecule 5 is water.

Mol	Chain	Residues	Atoms	ZeroOcc	AltConf
5	A	211	Total O 211 211	0	0
5	B	230	Total O 230 230	0	0
5	C	176	Total O 176 176	0	0
5	D	182	Total O 182 182	0	0

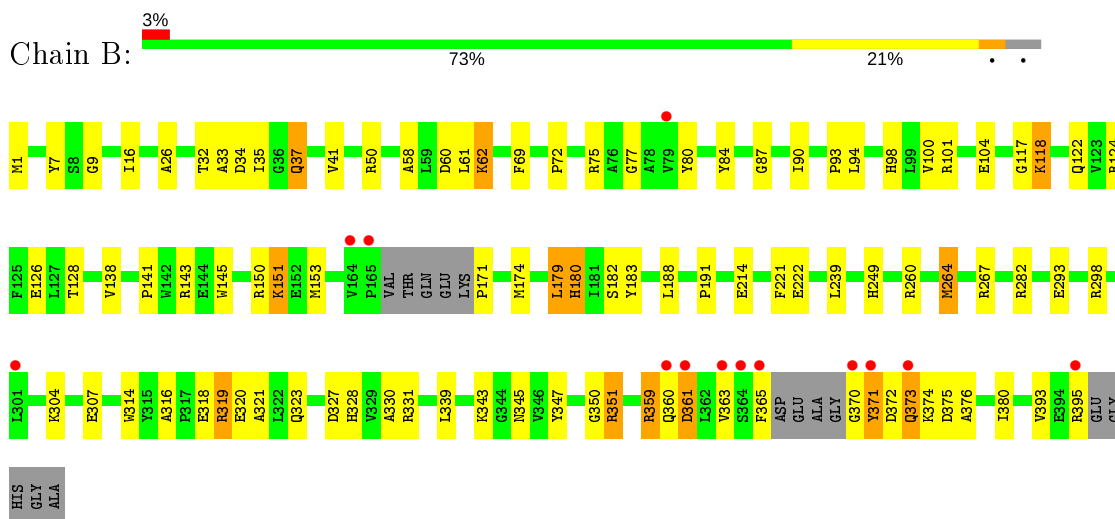
3 Residue-property plots [i](#)

These plots are drawn for all protein, RNA and DNA chains in the entry. The first graphic for a chain summarises the proportions of the various outlier classes displayed in the second graphic. The second graphic shows the sequence view annotated by issues in geometry and electron density. Residues are color-coded according to the number of geometric quality criteria for which they contain at least one outlier: green = 0, yellow = 1, orange = 2 and red = 3 or more. A red dot above a residue indicates a poor fit to the electron density ($RSRZ > 2$). Stretches of 2 or more consecutive residues without any outlier are shown as a green connector. Residues present in the sample, but not in the model, are shown in grey.

- Molecule 1: Argininosuccinate Synthetase

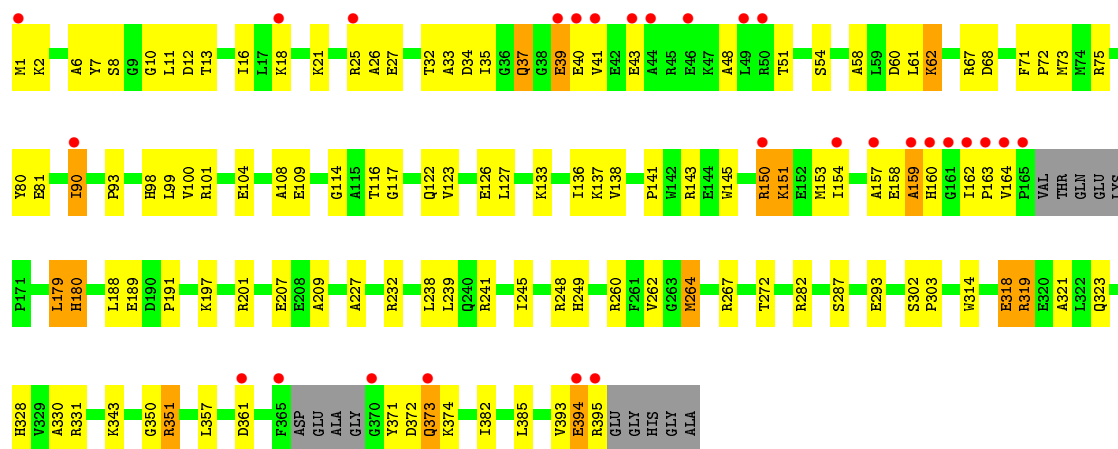


- Molecule 1: Argininosuccinate Synthetase

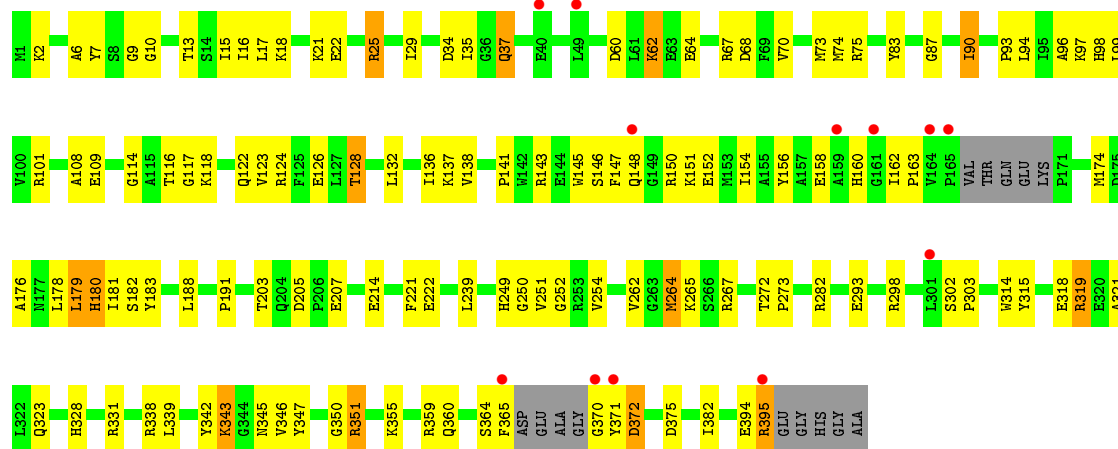


- Molecule 1: Argininosuccinate Synthetase





• Molecule 1: Argininosuccinate Synthetase



4 Data and refinement statistics

Property	Value	Source
Space group	H 3	Depositor
Cell constants a, b, c, α , β , γ	229.43Å 229.43Å 160.55Å 90.00° 90.00° 120.00°	Depositor
Resolution (Å)	10.00 – 1.95 43.85 – 1.95	Depositor EDS
% Data completeness (in resolution range)	(Not available) (10.00-1.95) 98.3 (43.85-1.95)	Depositor EDS
R_{merge}	(Not available)	Depositor
R_{sym}	(Not available)	Depositor
$\langle I/\sigma(I) \rangle$ ¹	3.37 (at 1.95Å)	Xtrriage
Refinement program	CNS	Depositor
R, R_{free}	0.230 , 0.250 0.233 , 0.254	Depositor DCC
R_{free} test set	22549 reflections (9.98%)	wwPDB-VP
Wilson B-factor (Å ²)	28.3	Xtrriage
Anisotropy	0.152	Xtrriage
Bulk solvent k_{sol} (e/Å ³), B_{sol} (Å ²)	0.41 , 56.1	EDS
L-test for twinning ²	$\langle L \rangle = 0.53$, $\langle L^2 \rangle = 0.37$	Xtrriage
Estimated twinning fraction	0.002 for h,-h-k,-l	Xtrriage
F_o, F_c correlation	0.94	EDS
Total number of atoms	13218	wwPDB-VP
Average B, all atoms (Å ²)	32.0	wwPDB-VP

Xtrriage's analysis on translational NCS is as follows: *The largest off-origin peak in the Patterson function is 2.72% of the height of the origin peak. No significant pseudotranslation is detected.*

¹Intensities estimated from amplitudes.

²Theoretical values of $\langle |L| \rangle$, $\langle L^2 \rangle$ for acentric reflections are 0.5, 0.333 respectively for untwinned datasets, and 0.375, 0.2 for perfectly twinned datasets.

5 Model quality

5.1 Standard geometry

Bond lengths and bond angles in the following residue types are not validated in this section: ANP, SIN

The Z score for a bond length (or angle) is the number of standard deviations the observed value is removed from the expected value. A bond length (or angle) with $|Z| > 5$ is considered an outlier worth inspection. RMSZ is the root-mean-square of all Z scores of the bond lengths (or angles).

Mol	Chain	Bond lengths		Bond angles	
		RMSZ	# Z >5	RMSZ	# Z >5
1	A	0.37	0/3085	0.68	3/4169 (0.1%)
1	B	0.36	0/3135	0.66	3/4237 (0.1%)
1	C	0.37	0/3135	0.63	0/4237
1	D	0.37	0/3135	0.67	2/4237 (0.0%)
All	All	0.37	0/12490	0.66	8/16880 (0.0%)

There are no bond length outliers.

All (8) bond angle outliers are listed below:

Mol	Chain	Res	Type	Atoms	Z	Observed(°)	Ideal(°)
1	D	221	PHE	CB-CA-C	-14.25	81.89	110.40
1	A	221	PHE	CB-CA-C	-14.02	82.37	110.40
1	B	221	PHE	CB-CA-C	-9.93	90.54	110.40
1	D	222	GLU	N-CA-CB	8.72	126.30	110.60
1	A	222	GLU	N-CA-CB	7.67	124.41	110.60
1	B	222	GLU	N-CA-C	6.82	129.41	111.00
1	B	221	PHE	N-CA-C	-6.17	94.34	111.00
1	A	263	GLY	N-CA-C	5.54	126.94	113.10

There are no chirality outliers.

There are no planarity outliers.

5.2 Too-close contacts

In the following table, the Non-H and H(model) columns list the number of non-hydrogen atoms and hydrogen atoms in the chain respectively. The H(added) column lists the number of hydrogen atoms added and optimized by MolProbity. The Clashes column lists the number of clashes within the asymmetric unit, whereas Symm-Clashes lists symmetry related clashes.

Mol	Chain	Non-H	H(model)	H(added)	Clashes	Symm-Clashes
1	A	3017	0	3006	108	0
1	B	3066	0	3052	104	0
1	C	3066	0	3052	136	0
1	D	3066	0	3052	118	0
2	A	31	0	13	2	0
2	B	31	0	13	2	0
2	C	31	0	13	5	0
2	D	31	0	13	6	0
3	A	12	0	12	1	0
3	B	12	0	12	3	0
3	C	12	0	12	0	0
3	D	12	0	12	1	0
4	A	8	0	4	0	0
4	B	8	0	4	0	0
4	C	8	0	4	1	0
4	D	8	0	4	1	0
5	A	211	0	0	13	0
5	B	230	0	0	11	0
5	C	176	0	0	7	0
5	D	182	0	0	6	0
All	All	13218	0	12278	419	0

The all-atom clashscore is defined as the number of clashes found per 1000 atoms (including hydrogen atoms). The all-atom clashscore for this structure is 17.

All (419) close contacts within the same asymmetric unit are listed below, sorted by their clash magnitude.

Atom-1	Atom-2	Interatomic distance (Å)	Clash overlap (Å)
1:D:151:LYS:H	1:D:151:LYS:HD2	1.06	1.14
1:A:151:LYS:H	1:A:151:LYS:HD2	1.12	1.11
1:A:264:MET:H	1:A:264:MET:HE3	1.10	1.08
1:B:151:LYS:HD2	1:B:151:LYS:H	1.18	1.07
1:A:123:VAL:HG22	1:B:380:ILE:HD11	1.38	1.05
1:C:151:LYS:HD2	1:C:151:LYS:H	1.17	1.03
1:A:262:VAL:HG23	1:A:264:MET:CE	1.94	0.97
1:D:35:ILE:H	1:D:37:GLN:NE2	1.63	0.97
1:A:262:VAL:HG23	1:A:264:MET:HE1	1.47	0.93
1:A:264:MET:H	1:A:264:MET:CE	1.85	0.89
1:A:124:ARG:O	1:A:128:THR:HG22	1.71	0.89
1:B:35:ILE:H	1:B:37:GLN:NE2	1.72	0.89
1:A:151:LYS:CD	1:A:151:LYS:H	1.87	0.88
1:D:124:ARG:O	1:D:128:THR:HG23	1.74	0.87

Continued on next page...

Continued from previous page...

Atom-1	Atom-2	Interatomic distance (Å)	Clash overlap (Å)
1:A:151:LYS:N	1:A:151:LYS:HD2	1.89	0.86
1:C:109:GLU:HG2	1:C:137:LYS:HE3	1.58	0.86
1:C:35:ILE:H	1:C:37:GLN:NE2	1.72	0.86
1:C:151:LYS:HD2	1:C:151:LYS:N	1.91	0.85
1:B:41:VAL:HG12	1:B:58:ALA:HB1	1.58	0.85
1:D:351:ARG:HD2	1:D:351:ARG:N	1.91	0.85
1:A:104:GLU:HG2	1:A:133:LYS:HZ2	1.42	0.85
1:A:319:ARG:HH21	1:A:323:GLN:HE21	1.22	0.84
1:A:373:GLN:H	1:A:373:GLN:NE2	1.74	0.84
1:B:351:ARG:N	1:B:351:ARG:HD2	1.94	0.82
1:C:109:GLU:O	1:C:137:LYS:HE2	1.79	0.82
1:D:83:TYR:HB3	1:D:254:VAL:HG21	1.60	0.82
1:B:370:GLY:O	1:B:371:TYR:HB3	1.80	0.81
1:B:118:LYS:H	1:B:118:LYS:HD2	1.46	0.81
1:B:314:TRP:O	1:B:319:ARG:HD3	1.80	0.80
1:A:264:MET:HE3	1:A:264:MET:N	1.93	0.79
1:D:151:LYS:N	1:D:151:LYS:HD2	1.92	0.78
1:A:351:ARG:N	1:A:351:ARG:HD2	1.99	0.78
1:A:293:GLU:HB2	1:C:318:GLU:CG	2.14	0.77
1:C:351:ARG:N	1:C:351:ARG:HD2	1.99	0.77
1:C:21:LYS:O	1:C:25:ARG:HA	1.86	0.76
1:C:37:GLN:H	1:C:37:GLN:NE2	1.85	0.75
1:D:151:LYS:H	1:D:151:LYS:CD	1.85	0.75
1:C:40:GLU:HG2	1:C:43:GLU:HG3	1.68	0.74
1:B:293:GLU:HB3	1:D:318:GLU:HG2	1.67	0.73
1:A:318:GLU:HG2	1:C:293:GLU:CB	2.18	0.73
1:D:35:ILE:H	1:D:37:GLN:HE22	1.36	0.73
1:C:37:GLN:HB2	1:C:39:GLU:HG2	1.69	0.73
1:A:109:GLU:O	1:A:137:LYS:HE2	1.88	0.72
1:C:37:GLN:H	1:C:37:GLN:HE21	1.37	0.72
1:B:319:ARG:HH21	1:B:323:GLN:HE21	1.36	0.72
1:A:318:GLU:CG	1:C:293:GLU:HB2	2.20	0.71
1:B:293:GLU:CB	1:D:318:GLU:HG2	2.20	0.71
1:A:126:GLU:HG2	1:A:138:VAL:HG11	1.72	0.71
1:A:262:VAL:HG23	1:A:264:MET:HE2	1.71	0.71
1:C:151:LYS:CD	1:C:151:LYS:H	1.89	0.71
1:B:100:VAL:O	1:B:104:GLU:HG3	1.90	0.71
1:A:118:LYS:HD3	1:B:365:PHE:CE2	2.25	0.71
1:A:100:VAL:O	1:A:104:GLU:HG3	1.91	0.70
1:A:262:VAL:CG2	1:A:264:MET:HE1	2.22	0.70
1:B:37:GLN:H	1:B:37:GLN:NE2	1.90	0.70

Continued on next page...

Continued from previous page...

Atom-1	Atom-2	Interatomic distance (Å)	Clash overlap (Å)
1:A:21:LYS:HD2	1:A:26:ALA:O	1.92	0.69
1:A:75:ARG:NH2	5:A:4292:HOH:O	2.25	0.69
1:D:109:GLU:O	1:D:137:LYS:HE2	1.92	0.69
1:D:360:GLN:HG2	1:D:364:SER:OG	1.93	0.69
5:A:4591:HOH:O	1:B:345:ASN:HB2	1.93	0.69
1:D:395:ARG:HH11	1:D:395:ARG:HG3	1.57	0.69
1:B:318:GLU:CG	1:D:293:GLU:HB2	2.23	0.69
1:B:151:LYS:HD2	1:B:151:LYS:N	2.00	0.69
1:C:227:ALA:HB2	1:C:232:ARG:HD2	1.75	0.69
1:B:128:THR:HG22	5:B:4136:HOH:O	1.92	0.69
1:B:118:LYS:N	1:B:118:LYS:HD2	2.06	0.69
1:A:293:GLU:CB	1:C:318:GLU:HG2	2.22	0.68
1:C:314:TRP:O	1:C:319:ARG:HD3	1.92	0.68
1:B:150:ARG:HA	1:B:153:MET:HE3	1.73	0.68
1:A:104:GLU:HG2	1:A:133:LYS:NZ	2.09	0.68
1:C:18:LYS:HG3	1:C:162:ILE:HD11	1.75	0.68
1:C:27:GLU:HG3	1:C:54:SER:OG	1.93	0.68
1:D:126:GLU:HG2	1:D:138:VAL:HG11	1.75	0.68
1:B:318:GLU:HG3	1:D:293:GLU:HB2	1.76	0.67
1:C:18:LYS:NZ	1:C:160:HIS:HB3	2.11	0.66
1:B:293:GLU:HB2	1:D:318:GLU:CG	2.26	0.66
1:B:87:GLY:HA2	1:B:179:LEU:HD13	1.77	0.66
1:D:37:GLN:NE2	1:D:37:GLN:H	1.94	0.66
1:A:150:ARG:HD2	1:A:153:MET:HE3	1.76	0.66
1:A:67:ARG:NH1	1:A:68:ASP:OD1	2.29	0.66
1:D:29:ILE:HD12	1:D:29:ILE:N	2.11	0.66
1:A:318:GLU:HG2	1:C:293:GLU:HB2	1.78	0.66
1:C:122:GLN:NE2	1:C:143:ARG:HH11	1.93	0.65
1:C:319:ARG:HH21	1:C:323:GLN:HE21	1.43	0.65
1:B:151:LYS:CD	1:B:151:LYS:H	1.94	0.65
1:C:262:VAL:O	1:C:262:VAL:HG12	1.96	0.65
1:B:93:PRO:HA	1:B:128:THR:HG21	1.78	0.65
1:D:214:GLU:OE1	1:D:249:HIS:HE1	1.80	0.65
1:B:93:PRO:HG3	5:B:4180:HOH:O	1.97	0.65
1:A:318:GLU:HG2	1:C:293:GLU:HB3	1.79	0.64
1:A:373:GLN:H	1:A:373:GLN:HE21	1.44	0.64
1:C:245:ILE:O	1:C:248:ARG:HG2	1.98	0.64
1:C:122:GLN:HE21	1:C:143:ARG:HH11	1.45	0.64
1:A:349:VAL:HG13	5:A:4240:HOH:O	1.96	0.64
1:C:373:GLN:NE2	1:C:373:GLN:H	1.96	0.64
1:A:293:GLU:HB2	1:C:318:GLU:HG3	1.79	0.64

Continued on next page...

Continued from previous page...

Atom-1	Atom-2	Interatomic distance (Å)	Clash overlap (Å)
1:A:104:GLU:OE2	1:A:133:LYS:NZ	2.28	0.64
1:C:33:ALA:HB1	1:C:61:LEU:HD12	1.80	0.64
1:B:318:GLU:HG2	1:D:293:GLU:HB3	1.81	0.63
1:B:75:ARG:HD2	1:B:327:ASP:OD2	1.99	0.63
1:B:371:TYR:HB2	1:B:375:ASP:OD1	1.98	0.63
1:B:41:VAL:CG1	1:B:58:ALA:HB1	2.26	0.63
5:C:4616:HOH:O	1:D:191:PRO:HG2	1.99	0.62
1:A:282:ARG:HD2	5:A:4356:HOH:O	1.99	0.62
1:D:360:GLN:HG2	1:D:364:SER:HG	1.65	0.62
1:B:37:GLN:H	1:B:37:GLN:HE21	1.47	0.61
1:D:314:TRP:O	1:D:319:ARG:HD3	1.99	0.61
5:A:4477:HOH:O	1:B:191:PRO:HG2	1.99	0.61
1:A:214:GLU:OE1	1:A:249:HIS:HE1	1.84	0.61
1:B:371:TYR:HD1	1:B:375:ASP:HB2	1.65	0.61
1:C:18:LYS:HZ2	1:C:160:HIS:HB3	1.65	0.61
1:D:83:TYR:CB	1:D:254:VAL:HG21	2.31	0.61
1:B:314:TRP:CE3	1:B:319:ARG:HD2	2.36	0.60
1:A:293:GLU:HB3	1:C:318:GLU:HG2	1.83	0.60
1:C:133:LYS:HD3	1:C:136:ILE:HD13	1.83	0.60
1:D:93:PRO:HG3	5:D:4130:HOH:O	2.00	0.60
1:B:318:GLU:HG2	1:D:293:GLU:CB	2.31	0.60
1:B:35:ILE:N	1:B:37:GLN:NE2	2.48	0.60
1:C:2:LYS:HB2	1:C:108:ALA:HA	1.84	0.60
1:A:371:TYR:HD1	1:A:375:ASP:HB2	1.67	0.60
1:C:343:LYS:HD2	1:D:343:LYS:HD2	1.84	0.60
1:A:245:ILE:O	1:A:248:ARG:HG2	2.02	0.59
1:D:150:ARG:O	1:D:154:ILE:HD13	2.01	0.59
1:D:128:THR:HG22	5:D:4380:HOH:O	2.01	0.59
1:C:343:LYS:CD	1:D:343:LYS:HD2	2.32	0.59
1:B:393:VAL:O	1:B:395:ARG:NH1	2.35	0.59
1:C:262:VAL:HG11	1:D:371:TYR:OH	2.01	0.59
1:A:133:LYS:HG2	1:A:136:ILE:HB	1.85	0.59
1:A:371:TYR:HB2	1:A:375:ASP:OD1	2.01	0.59
1:C:75:ARG:NH2	5:C:4731:HOH:O	2.35	0.59
1:C:150:ARG:O	1:C:154:ILE:HG13	2.01	0.59
1:D:37:GLN:HE21	1:D:37:GLN:H	1.51	0.59
1:D:35:ILE:N	1:D:37:GLN:NE2	2.46	0.59
1:C:302:SER:HB2	1:C:303:PRO:HD3	1.84	0.58
1:B:117:GLY:HA2	1:B:122:GLN:NE2	2.18	0.58
1:D:137:LYS:N	1:D:137:LYS:HD3	2.18	0.58
1:B:34:ASP:HA	1:B:37:GLN:HE22	1.69	0.58

Continued on next page...

Continued from previous page...

Atom-1	Atom-2	Interatomic distance (Å)	Clash overlap (Å)
1:C:35:ILE:N	1:C:37:GLN:NE2	2.48	0.58
1:D:75:ARG:NH2	5:D:4498:HOH:O	2.35	0.58
1:D:395:ARG:NH1	1:D:395:ARG:HG3	2.18	0.57
1:A:87:GLY:HA2	1:A:179:LEU:HD13	1.85	0.57
1:B:372:ASP:OD1	1:B:374:LYS:HB3	2.03	0.57
1:A:390:ARG:O	1:A:394:GLU:HG2	2.04	0.57
1:A:32:THR:CG2	1:A:41:VAL:HG13	2.34	0.57
1:A:319:ARG:HH21	1:A:323:GLN:NE2	1.96	0.57
1:B:318:GLU:CG	1:D:293:GLU:CB	2.83	0.57
1:D:67:ARG:HD2	1:D:68:ASP:OD1	2.04	0.57
2:B:1510:ANP:PA	3:B:1520:ARG:HH22	2.27	0.57
1:B:117:GLY:HA2	1:B:122:GLN:HE22	1.69	0.57
1:D:205:ASP:OD1	1:D:207:GLU:OE2	2.23	0.57
1:B:293:GLU:CB	1:D:318:GLU:CG	2.82	0.57
1:C:41:VAL:HG12	1:C:58:ALA:HB1	1.86	0.56
1:B:214:GLU:OE1	1:B:249:HIS:HE1	1.87	0.56
1:D:60:ASP:OD1	1:D:62:LYS:HD3	2.05	0.56
1:A:27:GLU:HG3	1:A:54:SER:OG	2.06	0.56
1:A:21:LYS:HD3	5:A:4491:HOH:O	2.06	0.56
1:C:34:ASP:HA	1:C:37:GLN:HE22	1.71	0.56
1:B:1:MET:O	1:B:26:ALA:HB1	2.06	0.56
1:B:34:ASP:HB2	1:B:41:VAL:HG21	1.88	0.56
1:C:207:GLU:HA	1:D:342:TYR:OH	2.06	0.56
1:A:382:ILE:HD12	1:C:262:VAL:CG1	2.36	0.55
1:B:360:GLN:HA	1:B:363:VAL:HG22	1.86	0.55
1:C:282:ARG:HD2	5:C:4375:HOH:O	2.06	0.55
1:A:216:VAL:HG21	1:A:245:ILE:HG21	1.88	0.55
1:C:16:ILE:HG23	1:C:141:PRO:HG2	1.87	0.55
1:A:314:TRP:O	1:A:319:ARG:HD3	2.06	0.55
1:A:93:PRO:HG3	5:A:4177:HOH:O	2.07	0.55
1:A:96:ALA:HB3	1:A:128:THR:HG21	1.89	0.55
1:C:40:GLU:CG	1:C:43:GLU:HG3	2.37	0.54
1:D:302:SER:HB2	1:D:303:PRO:HD3	1.88	0.54
1:D:6:ALA:HB2	1:D:99:LEU:HD11	1.89	0.54
1:D:282:ARG:HB2	1:D:282:ARG:NH1	2.23	0.54
1:C:18:LYS:CE	1:C:160:HIS:HB3	2.38	0.54
1:A:157:ALA:HB1	1:A:162:ILE:HB	1.89	0.54
1:C:232:ARG:HG3	1:C:232:ARG:HH11	1.73	0.54
1:B:171:PRO:HG2	5:B:4746:HOH:O	2.06	0.54
1:B:373:GLN:HG2	5:B:4742:HOH:O	2.07	0.54
1:B:371:TYR:CE1	1:C:382:ILE:HD11	2.43	0.54

Continued on next page...

Continued from previous page...

Atom-1	Atom-2	Interatomic distance (Å)	Clash overlap (Å)
1:D:338:ARG:HD3	5:D:4424:HOH:O	2.08	0.54
1:B:118:LYS:CD	1:B:118:LYS:N	2.70	0.54
1:C:241:ARG:NH2	5:C:4716:HOH:O	2.41	0.54
1:C:51:THR:HG22	1:C:51:THR:O	2.08	0.54
1:D:6:ALA:HB3	2:D:3510:ANP:O2'	2.07	0.54
1:B:126:GLU:HG2	1:B:138:VAL:HG11	1.89	0.53
1:C:32:THR:CG2	1:C:41:VAL:HG13	2.38	0.53
1:A:216:VAL:HG22	5:A:4140:HOH:O	2.08	0.53
1:C:394:GLU:HA	1:C:394:GLU:OE1	2.08	0.53
1:A:302:SER:HB2	1:A:303:PRO:HD3	1.90	0.53
1:D:35:ILE:N	1:D:37:GLN:HE22	2.04	0.53
1:B:350:GLY:C	1:B:351:ARG:HD2	2.29	0.53
1:D:394:GLU:O	1:D:395:ARG:O	2.26	0.53
1:D:319:ARG:HH21	1:D:323:GLN:HE21	1.55	0.52
1:A:125:PHE:O	1:A:128:THR:HG23	2.08	0.52
1:C:21:LYS:HD2	1:C:26:ALA:O	2.09	0.52
1:A:41:VAL:HG12	1:A:58:ALA:HB1	1.90	0.52
1:C:179:LEU:O	1:C:272:THR:HG23	2.09	0.52
1:D:176:ALA:CB	1:D:181:ILE:HG12	2.38	0.52
1:C:393:VAL:C	1:C:395:ARG:H	2.12	0.52
1:D:179:LEU:O	1:D:272:THR:HG23	2.10	0.52
1:D:174:MET:HA	1:D:182:SER:O	2.09	0.52
1:A:382:ILE:HD12	1:C:262:VAL:HG13	1.93	0.51
1:C:262:VAL:HB	1:C:264:MET:CE	2.41	0.51
1:B:328:HIS:CE1	1:B:331:ARG:HH22	2.28	0.51
1:B:359:ARG:HD2	1:B:361:ASP:CG	2.30	0.51
1:D:117:GLY:HA2	1:D:122:GLN:NE2	2.26	0.51
1:A:154:ILE:O	1:A:158:GLU:HG3	2.11	0.51
1:B:293:GLU:HB2	1:D:318:GLU:HG3	1.90	0.51
1:B:101:ARG:HD3	5:B:4401:HOH:O	2.11	0.51
1:B:371:TYR:CD1	1:C:382:ILE:HD11	2.45	0.51
1:B:371:TYR:CD1	1:B:375:ASP:HB2	2.46	0.51
1:D:314:TRP:CE3	1:D:319:ARG:HD2	2.46	0.51
1:A:123:VAL:HG22	1:B:380:ILE:CD1	2.26	0.50
1:C:393:VAL:O	1:C:395:ARG:NH1	2.44	0.50
1:B:180:HIS:ND1	1:B:180:HIS:C	2.64	0.50
1:C:126:GLU:HG2	1:C:138:VAL:HG11	1.93	0.50
1:D:370:GLY:O	1:D:371:TYR:HB3	2.12	0.50
1:A:37:GLN:HG2	5:A:4314:HOH:O	2.11	0.50
1:D:22:GLU:O	1:D:25:ARG:NH1	2.45	0.50
1:B:60:ASP:OD1	1:B:62:LYS:HD3	2.12	0.49

Continued on next page...

Continued from previous page...

Atom-1	Atom-2	Interatomic distance (Å)	Clash overlap (Å)
1:C:11:LEU:HD23	1:C:150:ARG:HH21	1.77	0.49
1:C:319:ARG:HH21	1:C:323:GLN:NE2	2.10	0.49
1:A:50:ARG:NH1	5:A:4614:HOH:O	2.45	0.49
1:D:117:GLY:HA2	1:D:122:GLN:HE22	1.77	0.49
1:D:148:GLN:HB2	1:D:152:GLU:OE2	2.12	0.49
1:C:34:ASP:HB2	1:C:41:VAL:HG21	1.94	0.49
1:C:393:VAL:C	1:C:395:ARG:N	2.66	0.49
1:A:11:LEU:HD23	1:A:150:ARG:HH21	1.77	0.49
1:A:70:VAL:O	1:A:74:MET:HG3	2.13	0.49
1:C:60:ASP:OD1	1:C:62:LYS:HE3	2.13	0.49
1:D:98:HIS:HD2	1:D:101:ARG:NH1	2.11	0.49
1:A:137:LYS:N	1:A:137:LYS:HD3	2.28	0.49
1:B:179:LEU:HD23	1:B:179:LEU:O	2.12	0.49
1:B:37:GLN:HG2	5:B:4252:HOH:O	2.11	0.49
1:C:6:ALA:HB3	2:C:2510:ANP:O2'	2.13	0.48
1:C:162:ILE:O	1:C:163:PRO:C	2.51	0.48
1:B:75:ARG:HG2	1:B:330:ALA:CB	2.43	0.48
1:D:249:HIS:HD2	5:D:4279:HOH:O	1.95	0.48
1:D:10:GLY:HA3	2:D:3510:ANP:O3G	2.13	0.48
1:A:343:LYS:HD2	1:B:343:LYS:CD	2.44	0.48
1:C:343:LYS:HD2	1:D:343:LYS:CD	2.43	0.48
1:A:248:ARG:HG3	1:A:249:HIS:ND1	2.29	0.48
2:B:1510:ANP:O1A	3:B:1520:ARG:NH2	2.42	0.48
1:B:87:GLY:HA3	1:B:180:HIS:CD2	2.48	0.48
1:D:34:ASP:HA	1:D:37:GLN:HE22	1.78	0.48
1:A:339:LEU:N	1:A:339:LEU:HD12	2.29	0.48
1:C:80:TYR:CD2	1:C:81:GLU:HG3	2.49	0.48
1:D:371:TYR:HB2	1:D:375:ASP:OD1	2.13	0.48
1:A:180:HIS:C	1:A:180:HIS:ND1	2.66	0.48
1:B:124:ARG:O	1:B:128:THR:HG23	2.13	0.47
1:C:75:ARG:HG2	1:C:330:ALA:CB	2.44	0.47
1:C:73:MET:CE	1:C:90:ILE:HG12	2.44	0.47
1:C:98:HIS:HD2	1:C:101:ARG:NH1	2.12	0.47
1:D:22:GLU:OE2	1:D:160:HIS:NE2	2.46	0.47
1:A:249:HIS:HD2	5:A:4197:HOH:O	1.96	0.47
1:D:93:PRO:HA	1:D:128:THR:HG21	1.96	0.47
1:B:319:ARG:HH21	1:B:323:GLN:NE2	2.08	0.47
1:A:318:GLU:HG3	1:C:293:GLU:HB2	1.97	0.47
1:D:282:ARG:HD2	5:D:4631:HOH:O	2.14	0.47
1:B:345:ASN:HB3	1:B:347:TYR:CE1	2.50	0.47
1:A:7:TYR:CE2	1:A:9:GLY:HA2	2.50	0.47

Continued on next page...

Continued from previous page...

Atom-1	Atom-2	Interatomic distance (Å)	Clash overlap (Å)
1:C:189:GLU:O	1:C:191:PRO:HD3	2.15	0.47
1:C:25:ARG:NH1	1:C:25:ARG:HB3	2.29	0.47
2:D:3510:ANP:PA	3:D:3520:ARG:HH22	2.38	0.47
1:C:93:PRO:HG3	5:C:4212:HOH:O	2.14	0.47
1:C:116:THR:HG21	1:D:365:PHE:CZ	2.50	0.47
1:C:248:ARG:HG3	1:C:249:HIS:CD2	2.49	0.46
1:A:395:ARG:HH22	1:D:355:LYS:CE	2.27	0.46
1:B:249:HIS:HD2	5:B:4064:HOH:O	1.98	0.46
1:D:118:LYS:O	1:D:264:MET:HE1	2.15	0.46
1:B:370:GLY:HA3	1:C:385:LEU:HD13	1.97	0.46
1:C:6:ALA:HB2	1:C:99:LEU:HD11	1.96	0.46
1:D:10:GLY:HA3	2:D:3510:ANP:PG	2.56	0.46
1:B:260:ARG:HD2	1:B:264:MET:SD	2.55	0.46
1:A:117:GLY:H	1:B:373:GLN:NE2	2.13	0.46
1:A:350:GLY:C	1:A:351:ARG:HD2	2.36	0.46
1:B:373:GLN:O	1:B:376:ALA:HB3	2.16	0.46
1:C:209:ALA:O	1:C:343:LYS:NZ	2.47	0.46
1:D:29:ILE:CD1	1:D:29:ILE:N	2.78	0.46
1:A:298:ARG:C	1:A:298:ARG:HD2	2.36	0.46
1:B:50:ARG:NH1	5:B:4373:HOH:O	2.49	0.46
1:B:69:PHE:C	1:B:72:PRO:HD2	2.36	0.46
1:D:154:ILE:O	1:D:158:GLU:HG3	2.16	0.46
1:B:376:ALA:O	1:B:380:ILE:HG12	2.16	0.46
1:C:395:ARG:HG3	1:C:395:ARG:HH11	1.80	0.46
1:C:262:VAL:HB	1:C:264:MET:HE1	1.98	0.45
1:D:122:GLN:HE21	1:D:143:ARG:HH11	1.64	0.45
1:D:298:ARG:HD2	1:D:298:ARG:O	2.16	0.45
1:B:328:HIS:CD2	1:D:321:ALA:HA	2.51	0.45
1:C:123:VAL:HG12	1:C:127:LEU:CD1	2.46	0.45
1:C:39:GLU:O	1:C:39:GLU:HG3	2.15	0.45
1:C:150:ARG:HG2	1:C:154:ILE:HD11	1.98	0.45
1:D:87:GLY:HA2	1:D:179:LEU:HD13	1.99	0.45
1:A:27:GLU:HG3	1:A:54:SER:CB	2.47	0.45
2:A:510:ANP:PA	3:A:520:ARG:HH22	2.37	0.45
1:A:382:ILE:HG23	1:C:262:VAL:HG13	1.99	0.45
1:C:67:ARG:NH1	1:C:68:ASP:OD1	2.50	0.45
1:C:122:GLN:HE21	1:C:143:ARG:NH1	2.12	0.45
1:C:180:HIS:ND1	1:C:180:HIS:C	2.70	0.45
1:C:80:TYR:CE2	1:C:81:GLU:HG3	2.51	0.45
1:B:80:TYR:HB3	1:B:84:TYR:HB3	1.99	0.44
1:C:201:ARG:HG3	1:C:201:ARG:HH11	1.82	0.44

Continued on next page...

Continued from previous page...

Atom-1	Atom-2	Interatomic distance (Å)	Clash overlap (Å)
1:D:16:ILE:HG23	1:D:141:PRO:HG2	1.98	0.44
1:A:191:PRO:HB2	1:B:351:ARG:HD3	1.99	0.44
1:A:351:ARG:HD3	1:B:191:PRO:HB2	1.98	0.44
1:A:176:ALA:CB	1:A:181:ILE:HG12	2.47	0.44
1:A:125:PHE:O	1:A:128:THR:CG2	2.66	0.44
1:B:370:GLY:HA3	1:C:385:LEU:CD1	2.46	0.44
1:A:41:VAL:CG1	1:A:58:ALA:HB1	2.48	0.44
1:A:371:TYR:CD1	1:D:382:ILE:HD11	2.52	0.44
1:C:1:MET:O	1:C:26:ALA:HB1	2.18	0.44
1:A:98:HIS:HD2	1:A:101:ARG:NH1	2.15	0.44
1:B:174:MET:HG2	1:B:183:TYR:CD2	2.53	0.44
1:C:232:ARG:HG3	1:C:232:ARG:NH1	2.33	0.44
1:D:262:VAL:HG13	1:D:262:VAL:O	2.17	0.44
1:B:32:THR:CG2	1:B:41:VAL:HG13	2.48	0.44
1:D:7:TYR:CE2	1:D:9:GLY:HA2	2.53	0.44
1:A:343:LYS:HD2	1:B:343:LYS:HD3	2.00	0.44
1:C:350:GLY:C	1:C:351:ARG:HD2	2.39	0.44
1:C:371:TYR:HA	5:C:4340:HOH:O	2.18	0.44
1:D:345:ASN:HB3	1:D:347:TYR:CE1	2.53	0.43
1:B:298:ARG:HD2	1:B:298:ARG:O	2.16	0.43
1:C:32:THR:HG22	1:C:41:VAL:HG13	2.00	0.43
1:B:298:ARG:HD2	1:B:298:ARG:C	2.38	0.43
1:D:331:ARG:HB3	1:D:331:ARG:HE	1.49	0.43
1:D:339:LEU:N	1:D:339:LEU:HD12	2.33	0.43
1:D:251:VAL:HG11	1:D:346:VAL:CG2	2.48	0.43
1:A:191:PRO:HG2	5:B:4445:HOH:O	2.18	0.43
1:A:222:GLU:HB2	5:A:4658:HOH:O	2.19	0.43
1:A:282:ARG:HB2	1:A:282:ARG:NH1	2.33	0.43
1:D:116:THR:HG23	4:D:3530:SIN:O1	2.19	0.43
1:B:304:LYS:O	1:B:307:GLU:HG2	2.18	0.43
1:C:158:GLU:O	1:C:159:ALA:C	2.57	0.43
1:C:41:VAL:CG1	1:C:58:ALA:HB1	2.49	0.43
1:A:251:VAL:CG1	1:A:252:GLY:N	2.82	0.43
1:B:61:LEU:HD13	1:B:94:LEU:HD11	2.00	0.43
1:A:328:HIS:CD2	1:C:321:ALA:HA	2.54	0.43
1:C:40:GLU:HG3	1:C:43:GLU:H	1.84	0.43
1:D:181:ILE:HG22	1:D:183:TYR:CE1	2.54	0.43
1:A:96:ALA:HB3	1:A:128:THR:CG2	2.47	0.43
1:C:116:THR:HG23	4:C:2530:SIN:O1	2.19	0.43
1:A:179:LEU:O	1:A:272:THR:HG23	2.18	0.43
1:A:371:TYR:CE1	1:D:382:ILE:HD11	2.54	0.43

Continued on next page...

Continued from previous page...

Atom-1	Atom-2	Interatomic distance (Å)	Clash overlap (Å)
1:B:351:ARG:N	1:B:351:ARG:CD	2.71	0.43
1:C:12:ASP:O	1:C:16:ILE:HG13	2.19	0.43
1:C:71:PHE:HB2	1:C:72:PRO:HD3	2.01	0.43
1:C:162:ILE:O	1:C:164:VAL:HG13	2.18	0.42
1:C:287:SER:HA	5:C:4779:HOH:O	2.19	0.42
1:D:2:LYS:HB2	1:D:108:ALA:HA	2.01	0.42
1:D:96:ALA:HB3	1:D:128:THR:OG1	2.19	0.42
1:C:117:GLY:HA2	1:C:122:GLN:NE2	2.34	0.42
1:D:70:VAL:O	1:D:74:MET:HG3	2.19	0.42
1:C:150:ARG:HA	1:C:153:MET:HE3	2.01	0.42
1:C:351:ARG:HD3	1:D:191:PRO:HB2	2.01	0.42
1:B:359:ARG:HD2	1:B:361:ASP:OD1	2.19	0.42
1:B:77:GLY:HA2	5:B:4345:HOH:O	2.18	0.42
1:C:150:ARG:N	1:C:151:LYS:HD2	2.35	0.42
1:C:260:ARG:HD2	1:C:264:MET:SD	2.60	0.42
1:D:17:LEU:O	1:D:21:LYS:HG3	2.19	0.42
1:D:114:GLY:N	2:D:3510:ANP:O3'	2.50	0.42
1:D:371:TYR:HD1	1:D:372:ASP:O	2.02	0.42
1:C:328:HIS:CE1	1:C:331:ARG:HH22	2.36	0.42
1:A:204:GLN:NE2	5:A:4668:HOH:O	2.53	0.42
1:A:180:HIS:HB2	1:A:271:GLU:O	2.20	0.42
1:B:339:LEU:HD12	1:B:339:LEU:N	2.35	0.42
1:A:382:ILE:CG2	1:C:262:VAL:HG13	2.49	0.42
1:D:203:THR:HB	1:D:250:GLY:HA2	2.02	0.42
1:A:358:TYR:O	1:A:359:ARG:O	2.38	0.42
1:C:67:ARG:HG2	1:C:68:ASP:OD1	2.20	0.42
1:D:13:THR:OG1	2:D:3510:ANP:O1G	2.26	0.42
1:B:282:ARG:CZ	1:B:282:ARG:HB2	2.50	0.42
1:C:394:GLU:OE1	1:C:394:GLU:CA	2.68	0.42
1:A:379:PHE:HB2	1:D:382:ILE:HG13	2.01	0.42
1:A:6:ALA:HB3	2:A:510:ANP:O2'	2.20	0.41
1:B:7:TYR:CE2	1:B:9:GLY:HA2	2.55	0.41
1:C:343:LYS:HD3	1:D:343:LYS:HD2	2.01	0.41
1:C:13:THR:HG23	2:C:2510:ANP:O1G	2.20	0.41
1:C:7:TYR:CE2	1:C:48:ALA:HB2	2.55	0.41
1:B:33:ALA:HB1	1:B:61:LEU:HD12	2.02	0.41
1:D:64:GLU:OE1	1:D:98:HIS:HE1	2.03	0.41
1:A:42:GLU:O	1:A:46:GLU:HG3	2.21	0.41
1:B:16:ILE:HG23	1:B:141:PRO:HG2	2.03	0.41
1:B:316:ALA:O	1:B:320:GLU:HG3	2.21	0.41
1:C:109:GLU:CG	1:C:137:LYS:HE3	2.41	0.41

Continued on next page...

Continued from previous page...

Atom-1	Atom-2	Interatomic distance (Å)	Clash overlap (Å)
1:C:372:ASP:OD2	1:C:372:ASP:C	2.58	0.41
1:D:162:ILE:O	1:D:163:PRO:C	2.58	0.41
1:C:27:GLU:CG	1:C:54:SER:OG	2.66	0.41
1:D:18:LYS:HG3	1:D:162:ILE:HD11	2.03	0.41
1:D:251:VAL:CG1	1:D:252:GLY:N	2.83	0.41
1:C:100:VAL:O	1:C:104:GLU:HG3	2.20	0.41
1:C:114:GLY:N	2:C:2510:ANP:O3'	2.54	0.41
1:D:180:HIS:C	1:D:180:HIS:ND1	2.74	0.41
1:A:298:ARG:O	1:A:298:ARG:HD2	2.21	0.41
1:B:321:ALA:HA	1:D:328:HIS:CD2	2.56	0.41
1:D:97:LYS:HD2	1:D:315:TYR:OH	2.19	0.41
1:D:73:MET:CE	1:D:90:ILE:HG12	2.51	0.41
3:B:1520:ARG:N	5:B:4065:HOH:O	2.54	0.41
1:D:122:GLN:HG3	1:D:123:VAL:N	2.36	0.41
1:A:319:ARG:NH2	1:A:323:GLN:HE21	2.03	0.41
1:B:122:GLN:HE21	1:B:143:ARG:HH11	1.68	0.41
1:D:128:THR:O	1:D:132:LEU:HG	2.21	0.41
1:D:136:ILE:C	1:D:137:LYS:HD3	2.41	0.41
1:C:98:HIS:CD2	1:C:101:ARG:NH1	2.89	0.40
1:D:15:ILE:HG23	1:D:156:TYR:CD2	2.56	0.40
1:D:298:ARG:HD2	1:D:298:ARG:C	2.42	0.40
1:B:41:VAL:HG12	1:B:58:ALA:CB	2.40	0.40
1:C:8:SER:HG	2:C:2510:ANP:PG	2.43	0.40
1:B:98:HIS:HD2	1:B:101:ARG:NH1	2.19	0.40
1:C:157:ALA:O	1:C:158:GLU:C	2.60	0.40
1:C:10:GLY:HA3	2:C:2510:ANP:PG	2.61	0.40
1:D:146:SER:O	1:D:147:PHE:C	2.58	0.40
1:A:24:TYR:O	1:A:25:ARG:C	2.57	0.40
1:A:260:ARG:HD2	1:A:264:MET:SD	2.61	0.40
1:B:1:MET:HB3	1:B:26:ALA:HB2	2.04	0.40
1:C:373:GLN:HG2	1:C:374:LYS:N	2.37	0.40
1:D:350:GLY:C	1:D:351:ARG:HD2	2.41	0.40
1:A:321:ALA:HA	1:C:328:HIS:CD2	2.57	0.40
1:A:371:TYR:HD2	1:A:371:TYR:H	1.70	0.40
1:C:238:LEU:C	1:C:238:LEU:HD23	2.42	0.40
1:C:357:LEU:HB2	1:D:265:LYS:HE3	2.04	0.40

There are no symmetry-related clashes.

5.3 Torsion angles [i](#)

5.3.1 Protein backbone [i](#)

In the following table, the Percentiles column shows the percent Ramachandran outliers of the chain as a percentile score with respect to all X-ray entries followed by that with respect to entries of similar resolution.

The Analysed column shows the number of residues for which the backbone conformation was analysed, and the total number of residues.

Mol	Chain	Analysed	Favoured	Allowed	Outliers	Percentiles	
1	A	374/400 (94%)	365 (98%)	8 (2%)	1 (0%)	41	30
1	B	380/400 (95%)	370 (97%)	8 (2%)	2 (0%)	29	17
1	C	380/400 (95%)	367 (97%)	12 (3%)	1 (0%)	41	30
1	D	380/400 (95%)	369 (97%)	9 (2%)	2 (0%)	29	17
All	All	1514/1600 (95%)	1471 (97%)	37 (2%)	6 (0%)	34	22

All (6) Ramachandran outliers are listed below:

Mol	Chain	Res	Type
1	B	371	TYR
1	C	159	ALA
1	A	343	LYS
1	B	373	GLN
1	D	343	LYS
1	D	273	PRO

5.3.2 Protein sidechains [i](#)

In the following table, the Percentiles column shows the percent sidechain outliers of the chain as a percentile score with respect to all X-ray entries followed by that with respect to entries of similar resolution.

The Analysed column shows the number of residues for which the sidechain conformation was analysed, and the total number of residues.

Mol	Chain	Analysed	Rotameric	Outliers	Percentiles	
1	A	304/319 (95%)	285 (94%)	19 (6%)	18	7
1	B	310/319 (97%)	293 (94%)	17 (6%)	21	9
1	C	310/319 (97%)	290 (94%)	20 (6%)	17	6
1	D	310/319 (97%)	291 (94%)	19 (6%)	18	7

Continued on next page...

Continued from previous page...

Mol	Chain	Analysed	Rotameric	Outliers	Percentiles
All	All	1234/1276 (97%)	1159 (94%)	75 (6%)	17 7

All (75) residues with a non-rotameric sidechain are listed below:

Mol	Chain	Res	Type
1	A	37	GLN
1	A	90	ILE
1	A	94	LEU
1	A	101	ARG
1	A	137	LYS
1	A	145	TRP
1	A	151	LYS
1	A	179	LEU
1	A	180	HIS
1	A	182	SER
1	A	188	LEU
1	A	239	LEU
1	A	264	MET
1	A	267	ARG
1	A	319	ARG
1	A	349	VAL
1	A	351	ARG
1	A	371	TYR
1	A	373	GLN
1	B	37	GLN
1	B	62	LYS
1	B	90	ILE
1	B	118	LYS
1	B	145	TRP
1	B	151	LYS
1	B	179	LEU
1	B	180	HIS
1	B	182	SER
1	B	188	LEU
1	B	239	LEU
1	B	264	MET
1	B	267	ARG
1	B	319	ARG
1	B	351	ARG
1	B	359	ARG
1	B	361	ASP
1	C	37	GLN

Continued on next page...

Continued from previous page...

Mol	Chain	Res	Type
1	C	39	GLU
1	C	62	LYS
1	C	90	ILE
1	C	145	TRP
1	C	150	ARG
1	C	151	LYS
1	C	179	LEU
1	C	180	HIS
1	C	188	LEU
1	C	197	LYS
1	C	239	LEU
1	C	264	MET
1	C	267	ARG
1	C	318	GLU
1	C	319	ARG
1	C	351	ARG
1	C	361	ASP
1	C	373	GLN
1	C	394	GLU
1	D	25	ARG
1	D	37	GLN
1	D	62	LYS
1	D	90	ILE
1	D	94	LEU
1	D	128	THR
1	D	145	TRP
1	D	178	LEU
1	D	179	LEU
1	D	180	HIS
1	D	188	LEU
1	D	239	LEU
1	D	264	MET
1	D	267	ARG
1	D	319	ARG
1	D	351	ARG
1	D	359	ARG
1	D	372	ASP
1	D	395	ARG

Some sidechains can be flipped to improve hydrogen bonding and reduce clashes. All (27) such sidechains are listed below:

Mol	Chain	Res	Type
1	A	98	HIS
1	A	249	HIS
1	A	323	GLN
1	A	373	GLN
1	B	37	GLN
1	B	98	HIS
1	B	122	GLN
1	B	148	GLN
1	B	180	HIS
1	B	249	HIS
1	B	323	GLN
1	B	360	GLN
1	C	37	GLN
1	C	98	HIS
1	C	122	GLN
1	C	180	HIS
1	C	323	GLN
1	C	360	GLN
1	C	373	GLN
1	D	37	GLN
1	D	98	HIS
1	D	122	GLN
1	D	148	GLN
1	D	204	GLN
1	D	249	HIS
1	D	323	GLN
1	D	360	GLN

5.3.3 RNA [i](#)

There are no RNA molecules in this entry.

5.4 Non-standard residues in protein, DNA, RNA chains [i](#)

There are no non-standard protein/DNA/RNA residues in this entry.

5.5 Carbohydrates [i](#)

There are no carbohydrates in this entry.

5.6 Ligand geometry i

12 ligands are modelled in this entry.

In the following table, the Counts columns list the number of bonds (or angles) for which Mogul statistics could be retrieved, the number of bonds (or angles) that are observed in the model and the number of bonds (or angles) that are defined in the Chemical Component Dictionary. The Link column lists molecule types, if any, to which the group is linked. The Z score for a bond length (or angle) is the number of standard deviations the observed value is removed from the expected value. A bond length (or angle) with $|Z| > 2$ is considered an outlier worth inspection. RMSZ is the root-mean-square of all Z scores of the bond lengths (or angles).

Mol	Type	Chain	Res	Link	Bond lengths			Bond angles		
					Counts	RMSZ	# Z > 2	Counts	RMSZ	# Z > 2
2	ANP	B	1510	-	29,33,33	2.00	9 (31%)	31,52,52	2.61	8 (25%)
4	SIN	C	2530	-	1,7,7	0.39	0	2,8,8	3.05	1 (50%)
4	SIN	B	1530	-	1,7,7	0.48	0	2,8,8	2.76	2 (100%)
4	SIN	A	530	-	1,7,7	0.36	0	2,8,8	3.42	1 (50%)
2	ANP	D	3510	-	29,33,33	2.28	9 (31%)	31,52,52	2.46	8 (25%)
2	ANP	A	510	-	29,33,33	2.28	8 (27%)	31,52,52	2.56	8 (25%)
2	ANP	C	2510	1	29,33,33	2.25	9 (31%)	31,52,52	2.50	9 (29%)
4	SIN	D	3530	-	1,7,7	0.54	0	2,8,8	3.30	2 (100%)

In the following table, the Chirals column lists the number of chiral outliers, the number of chiral centers analysed, the number of these observed in the model and the number defined in the Chemical Component Dictionary. Similar counts are reported in the Torsion and Rings columns. '–' means no outliers of that kind were identified.

Mol	Type	Chain	Res	Link	Chirals	Torsions	Rings
2	ANP	B	1510	-	-	6/14/38/38	0/3/3/3
4	SIN	C	2530	-	-	0/1/5/5	-
4	SIN	B	1530	-	-	0/1/5/5	-
4	SIN	A	530	-	-	0/1/5/5	-
2	ANP	D	3510	-	-	5/14/38/38	0/3/3/3
2	ANP	A	510	-	-	5/14/38/38	0/3/3/3
2	ANP	C	2510	1	-	7/14/38/38	0/3/3/3
4	SIN	D	3530	-	-	0/1/5/5	-

All (35) bond length outliers are listed below:

Mol	Chain	Res	Type	Atoms	Z	Observed(Å)	Ideal(Å)
2	D	3510	ANP	PB-O3A	7.51	1.68	1.59

Continued on next page...

Continued from previous page...

Mol	Chain	Res	Type	Atoms	Z	Observed(Å)	Ideal(Å)
2	A	510	ANP	PB-O3A	7.37	1.68	1.59
2	C	2510	ANP	PB-O3A	7.35	1.68	1.59
2	B	1510	ANP	PB-O3A	5.22	1.65	1.59
2	D	3510	ANP	PB-O1B	4.17	1.52	1.46
2	A	510	ANP	PB-O1B	4.09	1.52	1.46
2	C	2510	ANP	PB-O1B	4.06	1.52	1.46
2	B	1510	ANP	PB-O1B	3.97	1.52	1.46
2	B	1510	ANP	C3'-C4'	-3.50	1.44	1.53
2	A	510	ANP	C3'-C4'	-3.41	1.44	1.53
2	C	2510	ANP	C3'-C4'	-3.31	1.44	1.53
2	A	510	ANP	PG-N3B	3.21	1.71	1.63
2	A	510	ANP	PB-O2B	-3.13	1.48	1.56
2	C	2510	ANP	C2-N3	3.09	1.37	1.32
2	D	3510	ANP	C3'-C4'	-3.07	1.45	1.53
2	C	2510	ANP	PB-O2B	-2.99	1.48	1.56
2	D	3510	ANP	PB-O2B	-2.96	1.48	1.56
2	D	3510	ANP	C2-N3	2.93	1.36	1.32
2	A	510	ANP	C2-N3	2.88	1.36	1.32
2	B	1510	ANP	C2-N3	2.88	1.36	1.32
2	D	3510	ANP	C2'-C1'	-2.86	1.49	1.53
2	D	3510	ANP	PG-O1G	2.78	1.50	1.46
2	B	1510	ANP	PB-O2B	-2.73	1.49	1.56
2	D	3510	ANP	PB-N3B	-2.68	1.56	1.63
2	C	2510	ANP	PG-O1G	2.63	1.50	1.46
2	A	510	ANP	C2-N1	2.53	1.38	1.33
2	A	510	ANP	PG-O1G	2.51	1.50	1.46
2	C	2510	ANP	C2'-C1'	-2.45	1.50	1.53
2	D	3510	ANP	C2-N1	2.39	1.38	1.33
2	B	1510	ANP	PG-O1G	2.37	1.49	1.46
2	C	2510	ANP	PB-N3B	-2.37	1.57	1.63
2	B	1510	ANP	PG-N3B	2.33	1.69	1.63
2	B	1510	ANP	C2-N1	2.23	1.38	1.33
2	C	2510	ANP	C2-N1	2.20	1.38	1.33
2	B	1510	ANP	PB-N3B	-2.17	1.57	1.63

All (39) bond angle outliers are listed below:

Mol	Chain	Res	Type	Atoms	Z	Observed(°)	Ideal(°)
2	B	1510	ANP	O1B-PB-N3B	-8.11	99.83	111.77
2	A	510	ANP	O1B-PB-N3B	-7.76	100.34	111.77
2	C	2510	ANP	O1B-PB-N3B	-7.64	100.53	111.77
2	D	3510	ANP	O1B-PB-N3B	-7.50	100.72	111.77

Continued on next page...

Continued from previous page...

Mol	Chain	Res	Type	Atoms	Z	Observed(°)	Ideal(°)
2	B	1510	ANP	O3A-PB-N3B	7.00	126.02	106.59
2	A	510	ANP	O3A-PB-N3B	6.20	123.79	106.59
2	C	2510	ANP	O3A-PB-N3B	5.69	122.39	106.59
2	D	3510	ANP	O3A-PB-N3B	5.53	121.94	106.59
2	A	510	ANP	O4'-C1'-C2'	-5.08	99.50	106.93
2	B	1510	ANP	O4'-C1'-C2'	-5.04	99.56	106.93
2	C	2510	ANP	O4'-C1'-C2'	-5.01	99.61	106.93
2	D	3510	ANP	O4'-C1'-C2'	-4.96	99.68	106.93
4	A	530	SIN	C3-C2-C1	4.58	120.35	112.67
2	C	2510	ANP	C3'-C2'-C1'	4.53	107.80	100.98
2	D	3510	ANP	C3'-C2'-C1'	4.37	107.56	100.98
2	A	510	ANP	C3'-C2'-C1'	4.24	107.36	100.98
4	D	3530	SIN	C3-C2-C1	4.12	119.58	112.67
4	C	2530	SIN	C3-C2-C1	4.00	119.39	112.67
2	B	1510	ANP	C3'-C2'-C1'	3.86	106.79	100.98
2	B	1510	ANP	PA-O5'-C5'	-3.39	101.78	121.68
4	B	1530	SIN	C3-C2-C1	3.35	118.29	112.67
2	A	510	ANP	N3-C2-N1	-3.22	123.64	128.68
2	C	2510	ANP	N3-C2-N1	-3.20	123.67	128.68
2	A	510	ANP	PA-O3A-PB	3.18	143.80	132.62
2	D	3510	ANP	N3-C2-N1	-3.16	123.74	128.68
2	D	3510	ANP	O1G-PG-N3B	-3.15	107.13	111.77
2	A	510	ANP	PA-O5'-C5'	-3.14	103.26	121.68
2	C	2510	ANP	PA-O5'-C5'	-2.91	104.59	121.68
2	B	1510	ANP	N3-C2-N1	-2.87	124.19	128.68
2	D	3510	ANP	PA-O5'-C5'	-2.69	105.91	121.68
2	D	3510	ANP	PA-O3A-PB	2.65	141.94	132.62
2	B	1510	ANP	C5'-C4'-C3'	-2.64	105.28	115.18
2	C	2510	ANP	O1G-PG-N3B	-2.37	108.28	111.77
2	B	1510	ANP	O1G-PG-N3B	-2.29	108.40	111.77
2	C	2510	ANP	PA-O3A-PB	2.23	140.48	132.62
4	D	3530	SIN	C2-C3-C4	2.18	116.33	112.67
2	A	510	ANP	C5'-C4'-C3'	-2.07	107.44	115.18
4	B	1530	SIN	C2-C3-C4	2.01	116.04	112.67
2	C	2510	ANP	C2'-C3'-C4'	2.00	106.53	102.64

There are no chirality outliers.

All (23) torsion outliers are listed below:

Mol	Chain	Res	Type	Atoms
2	B	1510	ANP	PB-N3B-PG-O1G
2	B	1510	ANP	PG-N3B-PB-O1B

Continued on next page...

Continued from previous page...

Mol	Chain	Res	Type	Atoms
2	B	1510	ANP	PG-N3B-PB-O3A
2	B	1510	ANP	C3'-C4'-C5'-O5'
2	D	3510	ANP	PG-N3B-PB-O1B
2	D	3510	ANP	PG-N3B-PB-O3A
2	D	3510	ANP	C3'-C4'-C5'-O5'
2	A	510	ANP	PG-N3B-PB-O1B
2	A	510	ANP	PA-O3A-PB-O2B
2	C	2510	ANP	PG-N3B-PB-O1B
2	C	2510	ANP	PG-N3B-PB-O3A
2	C	2510	ANP	PA-O3A-PB-O1B
2	C	2510	ANP	PA-O3A-PB-O2B
2	A	510	ANP	C3'-C4'-C5'-O5'
2	C	2510	ANP	C3'-C4'-C5'-O5'
2	B	1510	ANP	O4'-C4'-C5'-O5'
2	D	3510	ANP	O4'-C4'-C5'-O5'
2	C	2510	ANP	O4'-C4'-C5'-O5'
2	A	510	ANP	O4'-C4'-C5'-O5'
2	B	1510	ANP	PB-O3A-PA-O2A
2	D	3510	ANP	PB-O3A-PA-O2A
2	A	510	ANP	PB-O3A-PA-O2A
2	C	2510	ANP	PB-O3A-PA-O2A

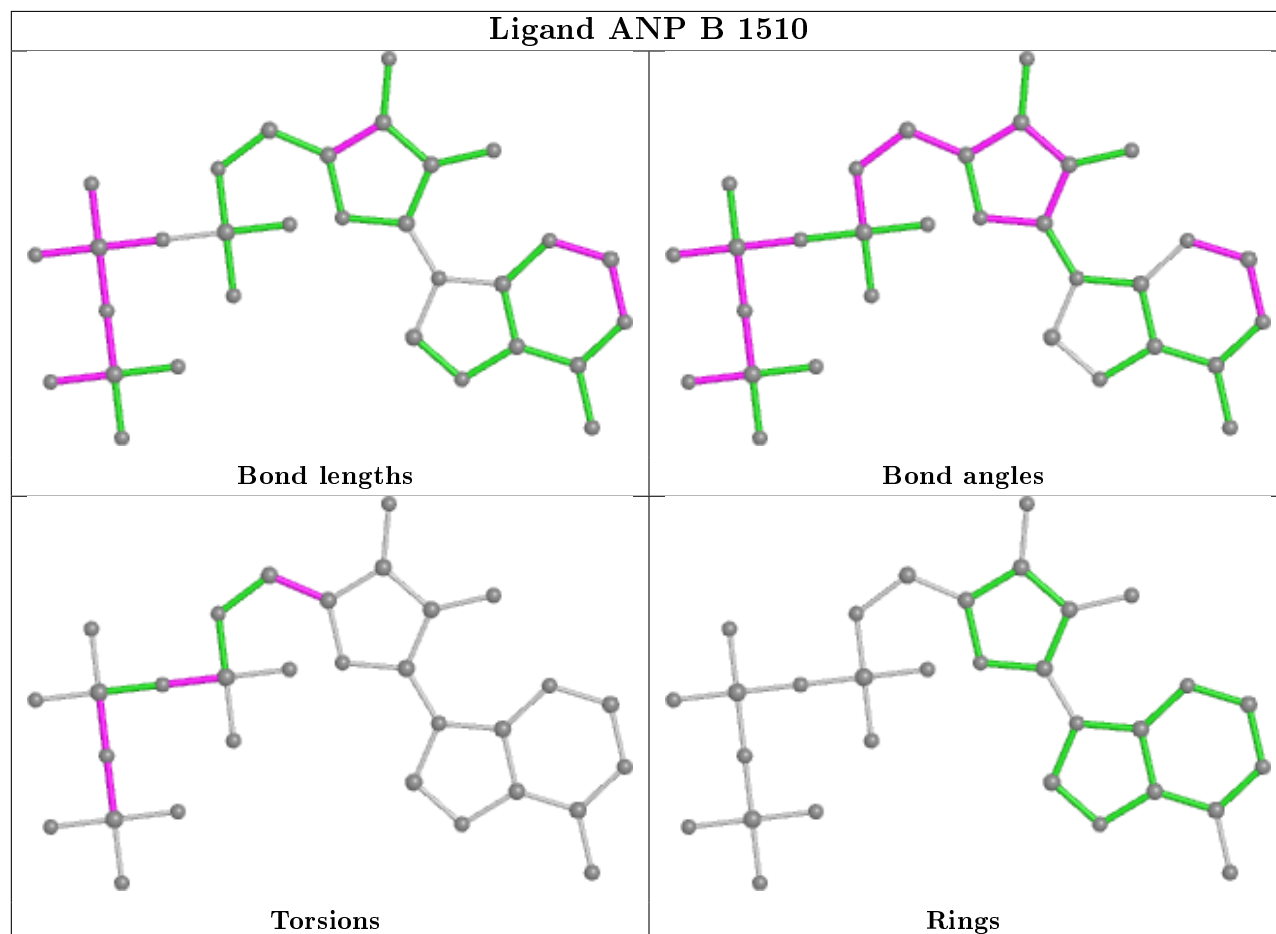
There are no ring outliers.

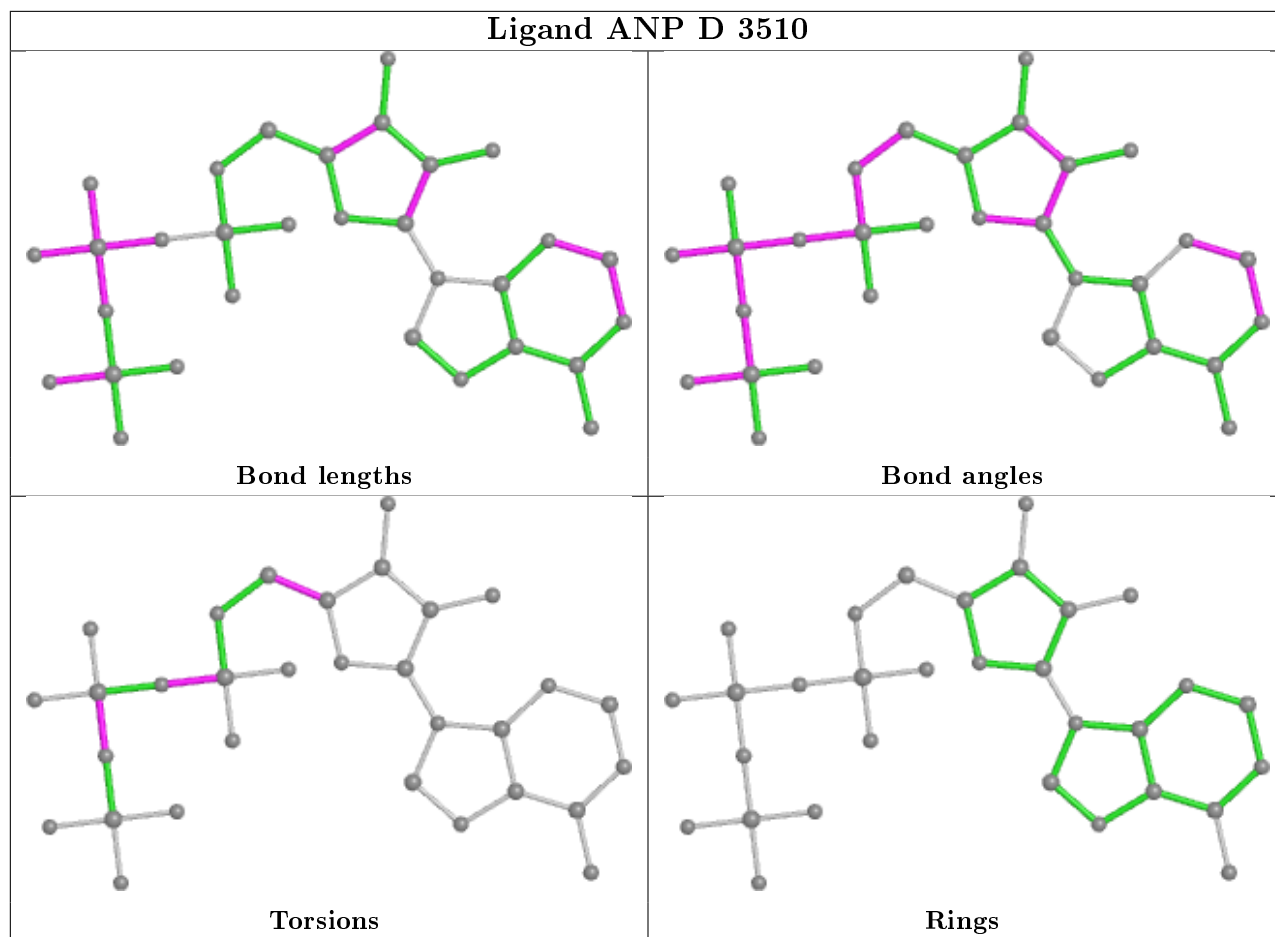
6 monomers are involved in 17 short contacts:

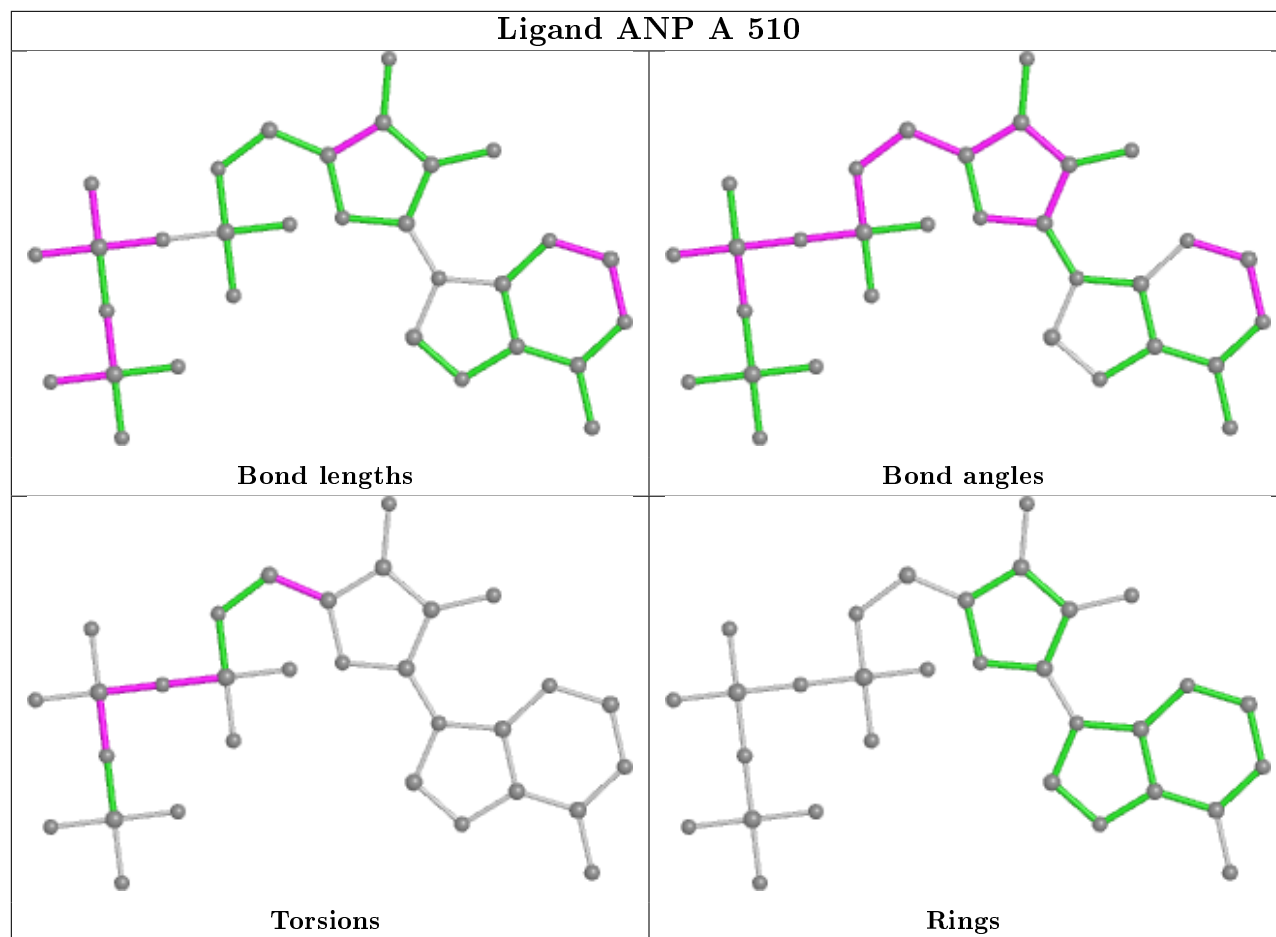
Mol	Chain	Res	Type	Clashes	Symm-Clashes
2	B	1510	ANP	2	0
4	C	2530	SIN	1	0
2	D	3510	ANP	6	0
2	A	510	ANP	2	0
2	C	2510	ANP	5	0
4	D	3530	SIN	1	0

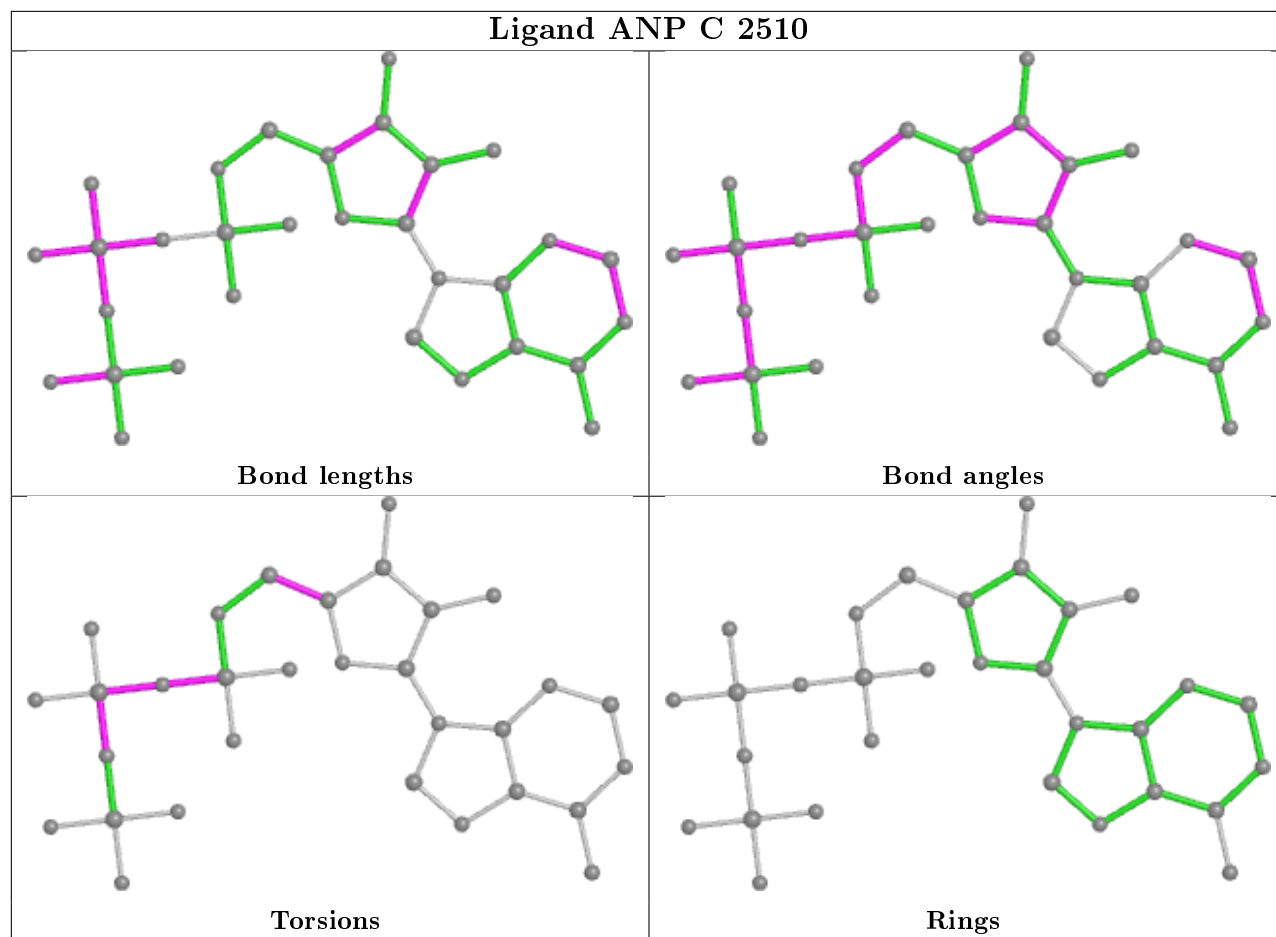
The following is a two-dimensional graphical depiction of Mogul quality analysis of bond lengths, bond angles, torsion angles, and ring geometry for all instances of the Ligand of Interest. In addition, ligands with molecular weight > 250 and outliers as shown on the validation Tables will also be included. For torsion angles, if less than 5% of the Mogul distribution of torsion angles is within 10 degrees of the torsion angle in question, then that torsion angle is considered an outlier. Any bond that is central to one or more torsion angles identified as an outlier by Mogul will be highlighted in the graph. For rings, the root-mean-square deviation (RMSD) between the ring in question and similar rings identified by Mogul is calculated over all ring torsion angles. If the average RMSD is greater than 60 degrees and the minimal RMSD between the ring in question and

any Mogul-identified rings is also greater than 60 degrees, then that ring is considered an outlier. The outliers are highlighted in purple. The color gray indicates Mogul did not find sufficient equivalents in the CSD to analyse the geometry.









5.7 Other polymers [i](#)

There are no such residues in this entry.

5.8 Polymer linkage issues [i](#)

There are no chain breaks in this entry.

6 Fit of model and data

6.1 Protein, DNA and RNA chains

In the following table, the column labelled ‘#RSRZ> 2’ contains the number (and percentage) of RSRZ outliers, followed by percent RSRZ outliers for the chain as percentile scores relative to all X-ray entries and entries of similar resolution. The OWAB column contains the minimum, median, 95th percentile and maximum values of the occupancy-weighted average B-factor per residue. The column labelled ‘Q< 0.9’ lists the number of (and percentage) of residues with an average occupancy less than 0.9.

Mol	Chain	Analysed	<RSRZ>	#RSRZ>2	OWAB(Å ²)	Q<0.9
1	A	380/400 (95%)	0.05	10 (2%) 56 65	20, 27, 49, 75	0
1	B	386/400 (96%)	-0.04	13 (3%) 45 55	20, 28, 47, 71	0
1	C	386/400 (96%)	0.18	28 (7%) 15 23	21, 31, 59, 77	0
1	D	386/400 (96%)	0.08	12 (3%) 49 58	22, 31, 55, 76	0
All	All	1538/1600 (96%)	0.07	63 (4%) 37 46	20, 29, 55, 77	0

All (63) RSRZ outliers are listed below:

Mol	Chain	Res	Type	RSRZ
1	C	165	PRO	8.4
1	A	165	PRO	7.3
1	B	365	PHE	6.9
1	A	371	TYR	6.8
1	A	370	GLY	5.6
1	B	371	TYR	4.9
1	B	165	PRO	4.6
1	D	165	PRO	4.4
1	C	39	GLU	4.4
1	D	370	GLY	4.3
1	B	370	GLY	4.2
1	B	361	ASP	3.9
1	D	159	ALA	3.6
1	C	25	ARG	3.5
1	D	395	ARG	3.4
1	D	371	TYR	3.3
1	C	160	HIS	3.3
1	C	49	LEU	3.3
1	C	365	PHE	3.2
1	D	164	VAL	3.2
1	C	164	VAL	3.1

Continued on next page...

Continued from previous page...

Mol	Chain	Res	Type	RSRZ
1	C	161	GLY	3.1
1	C	18	LYS	2.9
1	D	161	GLY	2.9
1	C	157	ALA	2.9
1	D	49	LEU	2.8
1	A	154	ILE	2.8
1	C	163	PRO	2.7
1	C	395	ARG	2.7
1	C	370	GLY	2.7
1	B	364	SER	2.6
1	B	360	GLN	2.6
1	C	43	GLU	2.6
1	C	50	ARG	2.6
1	A	395	ARG	2.5
1	C	154	ILE	2.5
1	C	373	GLN	2.5
1	A	79	VAL	2.5
1	B	395	ARG	2.5
1	D	365	PHE	2.4
1	A	40	GLU	2.4
1	C	40	GLU	2.4
1	C	162	ILE	2.4
1	B	164	VAL	2.3
1	D	301	LEU	2.3
1	C	46	GLU	2.3
1	A	164	VAL	2.3
1	C	150	ARG	2.2
1	A	85	LEU	2.2
1	D	148	GLN	2.2
1	C	394	GLU	2.2
1	C	361	ASP	2.1
1	C	41	VAL	2.1
1	B	301	LEU	2.1
1	D	40	GLU	2.1
1	C	44	ALA	2.1
1	C	159	ALA	2.1
1	C	1	MET	2.1
1	B	79	VAL	2.1
1	A	301	LEU	2.0
1	B	363	VAL	2.0
1	B	373	GLN	2.0
1	C	90	ILE	2.0

6.2 Non-standard residues in protein, DNA, RNA chains [i](#)

There are no non-standard protein/DNA/RNA residues in this entry.

6.3 Carbohydrates [i](#)

There are no carbohydrates in this entry.

6.4 Ligands [i](#)

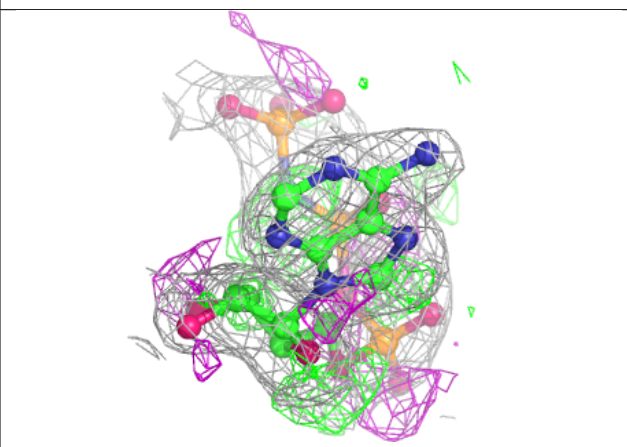
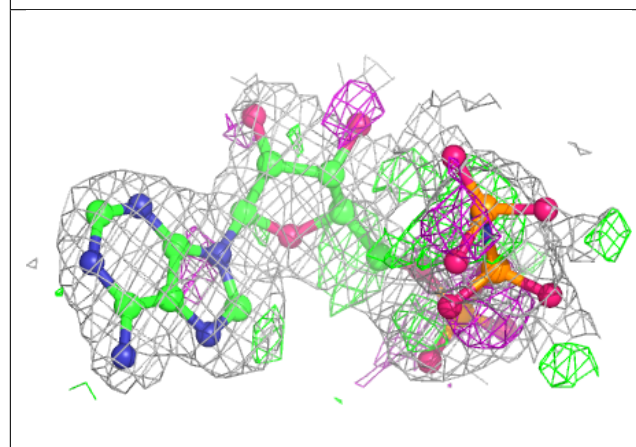
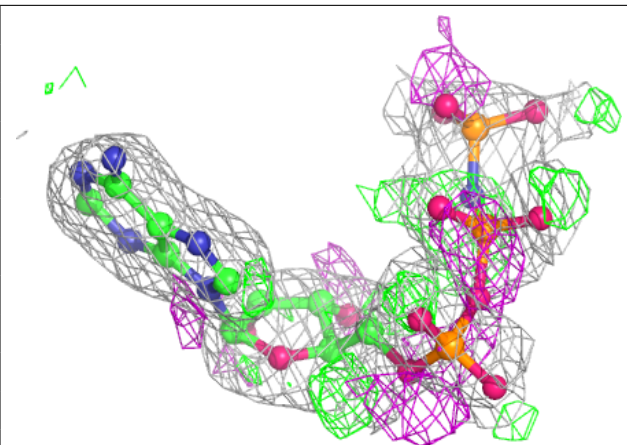
In the following table, the Atoms column lists the number of modelled atoms in the group and the number defined in the chemical component dictionary. The B-factors column lists the minimum, median, 95th percentile and maximum values of B factors of atoms in the group. The column labelled 'Q< 0.9' lists the number of atoms with occupancy less than 0.9.

Mol	Type	Chain	Res	Atoms	RSCC	RSR	B-factors(\AA^2)	Q<0.9
2	ANP	D	3510	31/31	0.77	0.19	35,47,76,79	0
2	ANP	B	1510	31/31	0.80	0.15	25,33,67,71	0
2	ANP	C	2510	31/31	0.80	0.18	28,44,74,78	0
2	ANP	A	510	31/31	0.82	0.17	26,38,66,68	0
3	ARG	B	1520	12/12	0.85	0.17	17,28,43,44	0
3	ARG	D	3520	12/12	0.86	0.20	25,32,44,50	0
4	SIN	C	2530	8/8	0.87	0.13	29,33,36,38	0
4	SIN	B	1530	8/8	0.87	0.15	35,37,40,41	0
4	SIN	A	530	8/8	0.88	0.15	33,37,40,41	0
3	ARG	A	520	12/12	0.88	0.18	19,27,38,43	0
3	ARG	C	2520	12/12	0.88	0.20	28,35,49,52	0
4	SIN	D	3530	8/8	0.89	0.12	33,34,42,43	0

The following is a graphical depiction of the model fit to experimental electron density of all instances of the Ligand of Interest. In addition, ligands with molecular weight > 250 and outliers as shown on the geometry validation Tables will also be included. Each fit is shown from different orientation to approximate a three-dimensional view.

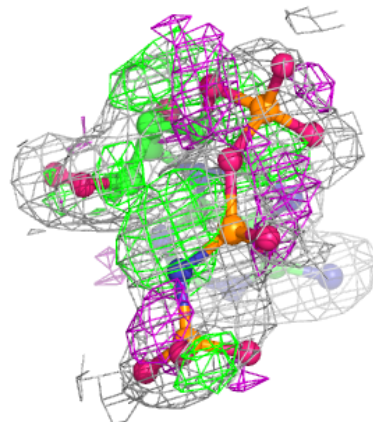
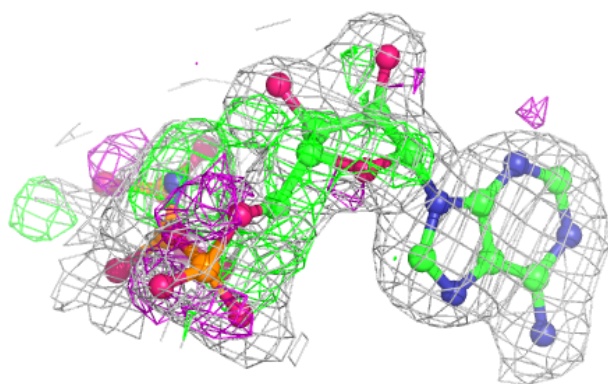
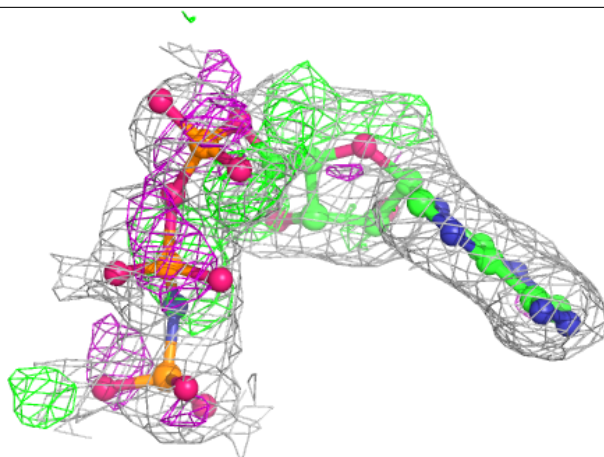
Electron density around ANP D 3510:

$2mF_o-DF_c$ (at 0.7 rmsd) in gray
 mF_o-DF_c (at 3 rmsd) in purple (negative)
and green (positive)



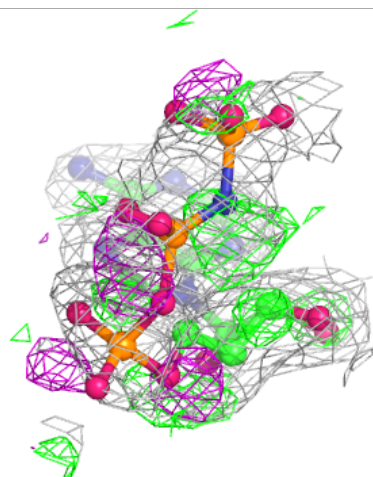
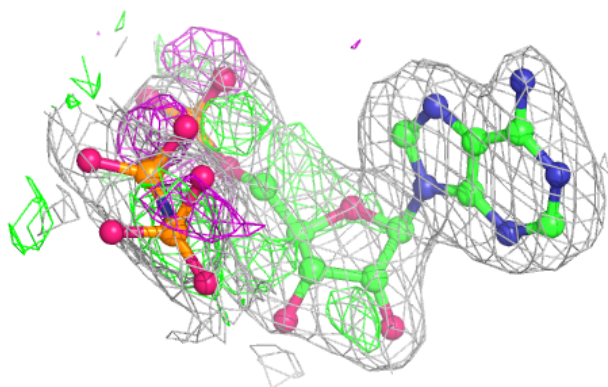
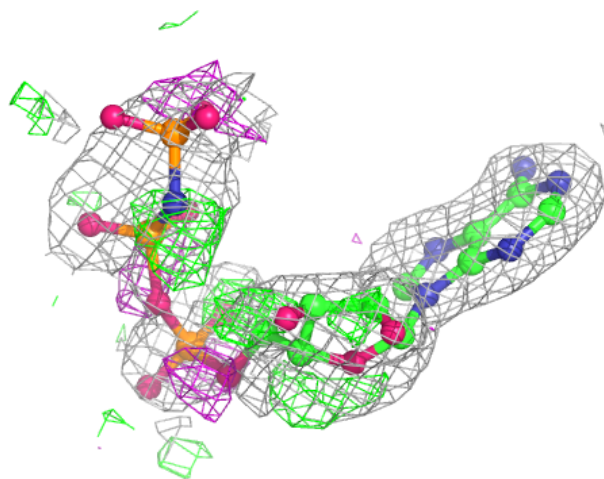
Electron density around ANP B 1510:

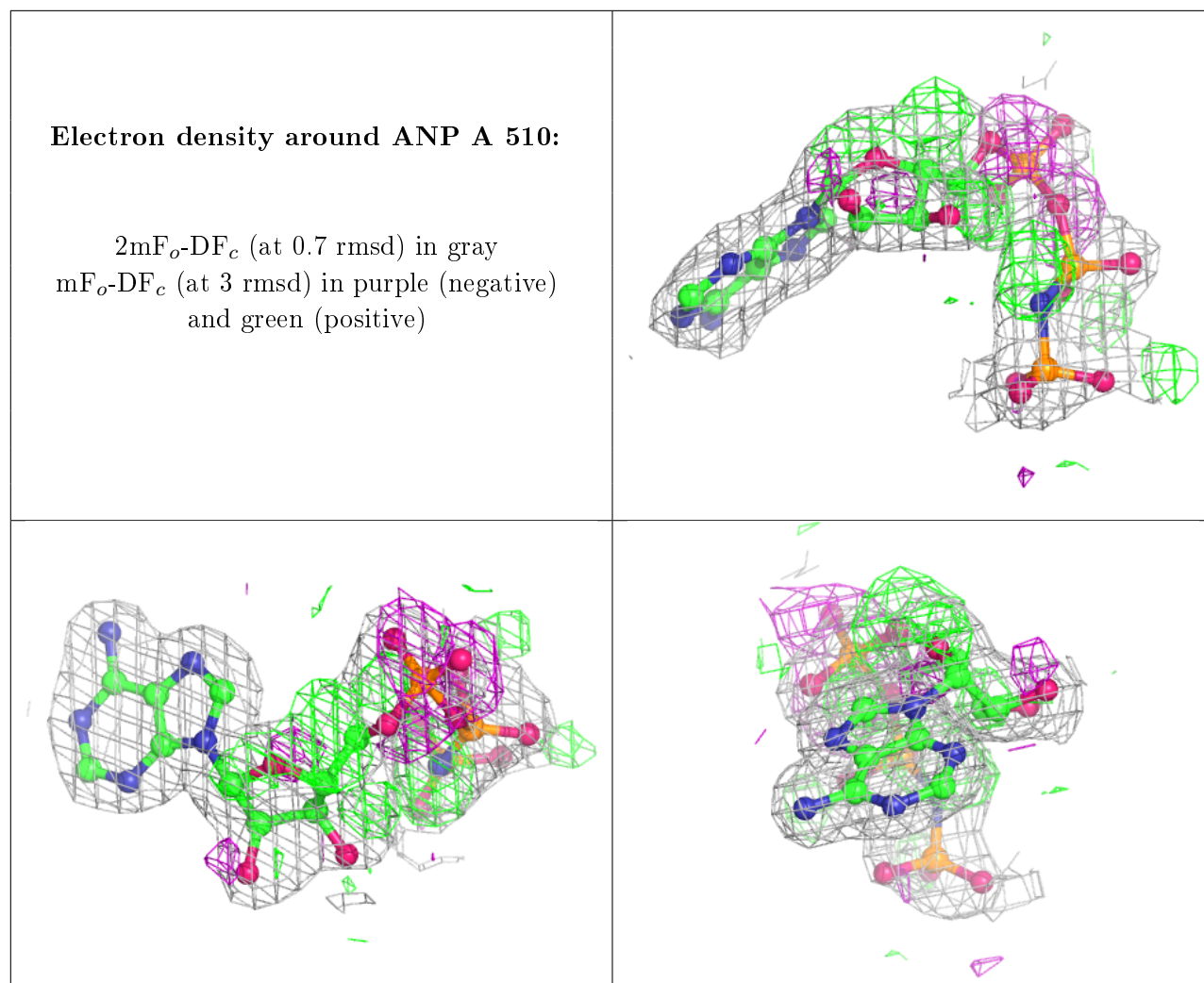
$2mF_o-DF_c$ (at 0.7 rmsd) in gray
 mF_o-DF_c (at 3 rmsd) in purple (negative)
and green (positive)



Electron density around ANP C 2510:

$2mF_o-DF_c$ (at 0.7 rmsd) in gray
 mF_o-DF_c (at 3 rmsd) in purple (negative)
and green (positive)





6.5 Other polymers [i](#)

There are no such residues in this entry.