



## Full wwPDB EM Validation Report ⓘ

Aug 27, 2024 – 12:34 PM JST

PDB ID : 8KIC  
EMDB ID : EMD-37257  
Title : Bacterial serine protease  
Authors : Lee, I.-G.; Jeon, H.  
Deposited on : 2023-08-23  
Resolution : 2.50 Å (reported)

This is a Full wwPDB EM Validation Report for a publicly released PDB entry.

We welcome your comments at [validation@mail.wwpdb.org](mailto:validation@mail.wwpdb.org)

A user guide is available at

<https://www.wwpdb.org/validation/2017/EMValidationReportHelp>

with specific help available everywhere you see the ⓘ symbol.

The types of validation reports are described at

<http://www.wwpdb.org/validation/2017/FAQs#types>.

---

The following versions of software and data (see [references ⓘ](#)) were used in the production of this report:

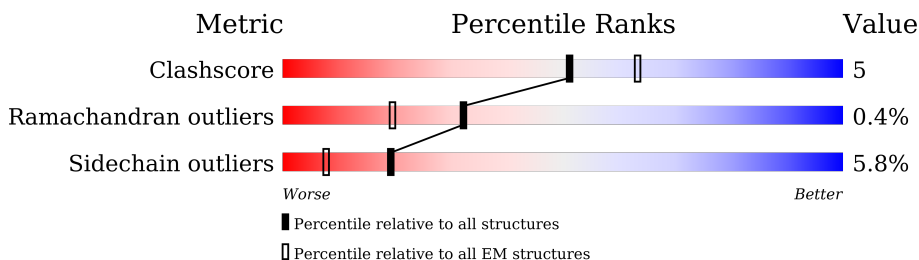
EMDB validation analysis : 0.0.1.dev112  
MolProbity : 4.02b-467  
Percentile statistics : 20231227.v01 (using entries in the PDB archive December 27th 2023)  
MapQ : 1.9.13  
Ideal geometry (proteins) : Engh & Huber (2001)  
Ideal geometry (DNA, RNA) : Parkinson et al. (1996)  
Validation Pipeline (wwPDB-VP) : 2.38.2

# 1 Overall quality at a glance i

The following experimental techniques were used to determine the structure:  
*ELECTRON MICROSCOPY*

The reported resolution of this entry is 2.50 Å.

Percentile scores (ranging between 0-100) for global validation metrics of the entry are shown in the following graphic. The table shows the number of entries on which the scores are based.




Metric	Whole archive (#Entries)	EM structures (#Entries)
Clashscore	210492	15764
Ramachandran outliers	207382	16835
Sidechain outliers	206894	16415

The table below summarises the geometric issues observed across the polymeric chains and their fit to the map. The red, orange, yellow and green segments of the bar indicate the fraction of residues that contain outliers for  $\geq 3$ , 2, 1 and 0 types of geometric quality criteria respectively. A grey segment represents the fraction of residues that are not modelled. The numeric value for each fraction is indicated below the corresponding segment, with a dot representing fractions  $\leq 5\%$ . The upper red bar (where present) indicates the fraction of residues that have poor fit to the EM map (all-atom inclusion  $< 40\%$ ). The numeric value is given above the bar.

Mol	Chain	Length	Quality of chain
1	A	463	
1	B	463	
1	C	463	
1	D	463	
1	E	463	
1	F	463	
2	G	8	
3	H	5	

*Continued on next page...*

*Continued from previous page...*

Mol	Chain	Length	Quality of chain
4	I	7	 <p>A horizontal bar chart representing the quality of chain. The bar is divided into three segments: a red segment on the left labeled '14%', a large green segment in the middle labeled '86%', and a yellow segment on the right labeled '14%'.</p>

## 2 Entry composition [i](#)

There are 4 unique types of molecules in this entry. The entry contains 8589 atoms, of which 0 are hydrogens and 0 are deuteriums.

In the tables below, the AltConf column contains the number of residues with at least one atom in alternate conformation and the Trace column contains the number of residues modelled with at most 2 atoms.

- Molecule 1 is a protein called peptidase Do.

Mol	Chain	Residues	Atoms					AltConf	Trace
			Total	C	N	O	S		
1	D	87	Total 632	C 392	N 113	O 125	S 2	0	0
1	E	90	Total 656	C 409	N 116	O 128	S 3	0	0
1	F	91	Total 667	C 415	N 120	O 129	S 3	0	0
1	C	300	Total 2178	C 1366	N 382	O 427	S 3	0	0
1	A	300	Total 2178	C 1366	N 382	O 427	S 3	0	0
1	B	300	Total 2178	C 1366	N 382	O 427	S 3	0	0

There are 54 discrepancies between the modelled and reference sequences:

Chain	Residue	Modelled	Actual	Comment	Reference
D	214	ALA	SER	engineered mutation	UNP C3SRW2
D	456	LEU	-	expression tag	UNP C3SRW2
D	457	TRP	-	expression tag	UNP C3SRW2
D	458	HIS	-	expression tag	UNP C3SRW2
D	459	HIS	-	expression tag	UNP C3SRW2
D	460	HIS	-	expression tag	UNP C3SRW2
D	461	HIS	-	expression tag	UNP C3SRW2
D	462	HIS	-	expression tag	UNP C3SRW2
D	463	HIS	-	expression tag	UNP C3SRW2
E	214	ALA	SER	engineered mutation	UNP C3SRW2
E	456	LEU	-	expression tag	UNP C3SRW2
E	457	TRP	-	expression tag	UNP C3SRW2
E	458	HIS	-	expression tag	UNP C3SRW2
E	459	HIS	-	expression tag	UNP C3SRW2
E	460	HIS	-	expression tag	UNP C3SRW2
E	461	HIS	-	expression tag	UNP C3SRW2
E	462	HIS	-	expression tag	UNP C3SRW2
E	463	HIS	-	expression tag	UNP C3SRW2

*Continued on next page...*

Continued from previous page...

Chain	Residue	Modelled	Actual	Comment	Reference
F	214	ALA	SER	engineered mutation	UNP C3SRW2
F	456	LEU	-	expression tag	UNP C3SRW2
F	457	TRP	-	expression tag	UNP C3SRW2
F	458	HIS	-	expression tag	UNP C3SRW2
F	459	HIS	-	expression tag	UNP C3SRW2
F	460	HIS	-	expression tag	UNP C3SRW2
F	461	HIS	-	expression tag	UNP C3SRW2
F	462	HIS	-	expression tag	UNP C3SRW2
F	463	HIS	-	expression tag	UNP C3SRW2
C	214	ALA	SER	engineered mutation	UNP C3SRW2
C	456	LEU	-	expression tag	UNP C3SRW2
C	457	TRP	-	expression tag	UNP C3SRW2
C	458	HIS	-	expression tag	UNP C3SRW2
C	459	HIS	-	expression tag	UNP C3SRW2
C	460	HIS	-	expression tag	UNP C3SRW2
C	461	HIS	-	expression tag	UNP C3SRW2
C	462	HIS	-	expression tag	UNP C3SRW2
C	463	HIS	-	expression tag	UNP C3SRW2
A	214	ALA	SER	engineered mutation	UNP C3SRW2
A	456	LEU	-	expression tag	UNP C3SRW2
A	457	TRP	-	expression tag	UNP C3SRW2
A	458	HIS	-	expression tag	UNP C3SRW2
A	459	HIS	-	expression tag	UNP C3SRW2
A	460	HIS	-	expression tag	UNP C3SRW2
A	461	HIS	-	expression tag	UNP C3SRW2
A	462	HIS	-	expression tag	UNP C3SRW2
A	463	HIS	-	expression tag	UNP C3SRW2
B	214	ALA	SER	engineered mutation	UNP C3SRW2
B	456	LEU	-	expression tag	UNP C3SRW2
B	457	TRP	-	expression tag	UNP C3SRW2
B	458	HIS	-	expression tag	UNP C3SRW2
B	459	HIS	-	expression tag	UNP C3SRW2
B	460	HIS	-	expression tag	UNP C3SRW2
B	461	HIS	-	expression tag	UNP C3SRW2
B	462	HIS	-	expression tag	UNP C3SRW2
B	463	HIS	-	expression tag	UNP C3SRW2

- Molecule 2 is a protein called Lysozyme fragment (unknown sequence).

Mol	Chain	Residues	Atoms				AltConf	Trace
			Total	C	N	O		
2	G	8	40	24	8	8	0	0

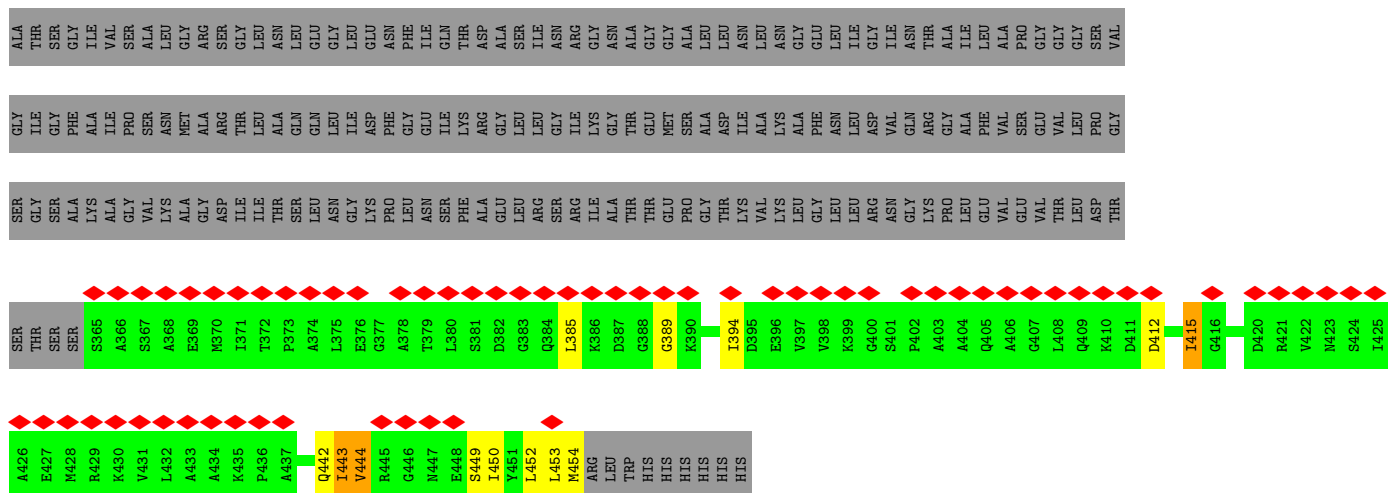
- Molecule 3 is a protein called Lysozyme fragment (unknown sequence).

Mol	Chain	Residues	Atoms				AltConf	Trace
			Total	C	N	O		
3	H	5	25	15	5	5	0	0

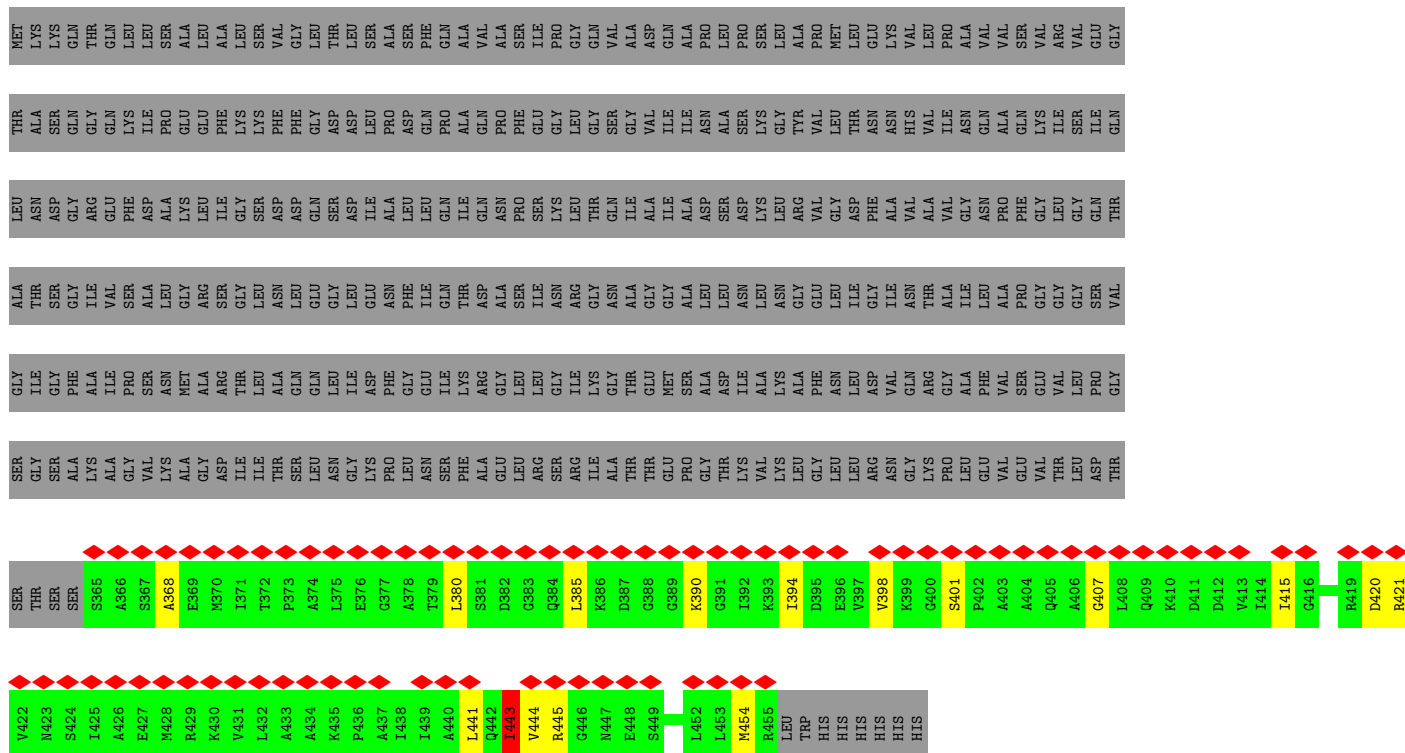
- Molecule 4 is a protein called Lysozyme fragment (unknown sequence).

Mol	Chain	Residues	Atoms				AltConf	Trace
			Total	C	N	O		
4	I	7	35	21	7	7	0	0

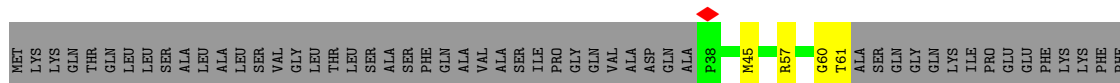




• Molecule 1: peptidase Do



• Molecule 1: peptidase Do

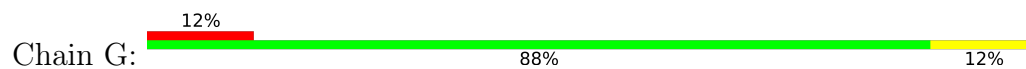






MET ARG LYS VAL LEU ALA ALA LYS PRO PHO ALA ILE ILE ALA LEU GLN ILE VAL ARG GLY ASN GLU SER ILE TYR LEU LEU MET ARG LEU TRP TRP HIS HIS HIS HIS HIS HIS

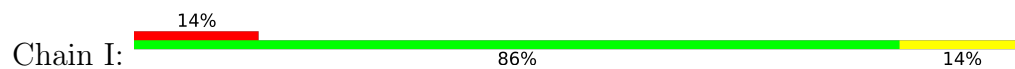
- Molecule 2: Lysozyme fragment (unknown sequence)



- Molecule 3: Lysozyme fragment (unknown sequence)



- Molecule 4: Lysozyme fragment (unknown sequence)



## 4 Experimental information

Property	Value	Source
EM reconstruction method	SINGLE PARTICLE	Depositor
Imposed symmetry	POINT, Not provided	
Number of particles used	382427	Depositor
Resolution determination method	FSC 0.143 CUT-OFF	Depositor
CTF correction method	PHASE FLIPPING AND AMPLITUDE CORRECTION	Depositor
Microscope	TFS KRIOS	Depositor
Voltage (kV)	300	Depositor
Electron dose ( $e^-/\text{\AA}^2$ )	67.7	Depositor
Minimum defocus (nm)	700	Depositor
Maximum defocus (nm)	1700	Depositor
Magnification	Not provided	
Image detector	GATAN K3 BIOQUANTUM (6k x 4k)	Depositor
Maximum map value	0.649	Depositor
Minimum map value	-0.299	Depositor
Average map value	-0.001	Depositor
Map value standard deviation	0.010	Depositor
Recommended contour level	0.1	Depositor
Map size ( $\text{\AA}$ )	305.28, 305.28, 305.28	wwPDB
Map dimensions	360, 360, 360	wwPDB
Map angles ( $^\circ$ )	90.0, 90.0, 90.0	wwPDB
Pixel spacing ( $\text{\AA}$ )	0.848, 0.848, 0.848	Depositor

## 5 Model quality [i](#)

### 5.1 Standard geometry [i](#)

The Z score for a bond length (or angle) is the number of standard deviations the observed value is removed from the expected value. A bond length (or angle) with  $|Z| > 5$  is considered an outlier worth inspection. RMSZ is the root-mean-square of all Z scores of the bond lengths (or angles).

Mol	Chain	Bond lengths		Bond angles	
		RMSZ	# Z  >5	RMSZ	# Z  >5
1	A	0.27	0/2201	0.51	0/2976
1	B	0.30	0/2201	0.55	0/2976
1	C	0.28	0/2201	0.53	0/2976
1	D	0.32	0/634	0.58	0/851
1	E	0.28	0/659	0.56	1/886 (0.1%)
1	F	0.29	0/670	0.56	0/900
All	All	0.28	0/8566	0.54	1/11565 (0.0%)

Chiral center outliers are detected by calculating the chiral volume of a chiral center and verifying if the center is modelled as a planar moiety or with the opposite hand. A planarity outlier is detected by checking planarity of atoms in a peptide group, atoms in a mainchain group or atoms of a sidechain that are expected to be planar.

Mol	Chain	#Chirality outliers	#Planarity outliers
1	D	0	1

There are no bond length outliers.

All (1) bond angle outliers are listed below:

Mol	Chain	Res	Type	Atoms	Z	Observed(°)	Ideal(°)
1	E	415	ILE	CG1-CB-CG2	-5.10	100.17	111.40

There are no chirality outliers.

All (1) planarity outliers are listed below:

Mol	Chain	Res	Type	Group
1	D	445	ARG	Sidechain

## 5.2 Too-close contacts [i](#)

In the following table, the Non-H and H(model) columns list the number of non-hydrogen atoms and hydrogen atoms in the chain respectively. The H(added) column lists the number of hydrogen atoms added and optimized by MolProbity. The Clashes column lists the number of clashes within the asymmetric unit, whereas Symm-Clashes lists symmetry-related clashes.

Mol	Chain	Non-H	H(model)	H(added)	Clashes	Symm-Clashes
1	A	2178	0	2249	22	0
1	B	2178	0	2249	25	0
1	C	2178	0	2249	25	0
1	D	632	0	663	8	0
1	E	656	0	695	8	0
1	F	667	0	708	8	0
2	G	40	0	13	1	0
3	H	25	0	8	1	0
4	I	35	0	10	1	0
All	All	8589	0	8844	93	0

The all-atom clashscore is defined as the number of clashes found per 1000 atoms (including hydrogen atoms). The all-atom clashscore for this structure is 5.

All (93) close contacts within the same asymmetric unit are listed below, sorted by their clash magnitude.

Atom-1	Atom-2	Interatomic distance (Å)	Clash overlap (Å)
1:C:116:LYS:NZ	1:C:128:ASP:OD1	2.17	0.77
1:F:385:LEU:HD11	1:F:415:ILE:HD11	1.68	0.76
1:A:210:ASN:H	1:A:213:ASN:HD22	1.35	0.75
1:D:418:ASN:HB3	1:D:419:ARG:HH12	1.51	0.74
1:A:57:ARG:HH21	1:A:118:SER:HB3	1.62	0.65
1:B:210:ASN:H	1:B:213:ASN:HD22	1.43	0.64
1:B:199:LEU:HD22	1:B:330:SER:HA	1.79	0.64
1:F:441:LEU:O	1:F:443:ILE:HG23	1.98	0.63
1:C:135:ASP:OD1	1:C:264:ILE:HG13	2.01	0.60
1:C:275:GLU:OE1	1:C:324:SER:OG	2.18	0.60
1:C:279:ASP:OD1	1:C:279:ASP:N	2.32	0.59
1:D:418:ASN:HB3	1:D:419:ARG:NH1	2.17	0.59
1:A:211:ARG:HG2	2:G:34:UNK:CB	2.33	0.59
1:D:370:MET:CE	1:D:370:MET:H	2.17	0.57
1:C:318:ASN:HA	1:C:342:LYS:HB2	1.86	0.57
1:A:308:VAL:HG13	1:A:345:LEU:HD21	1.87	0.56
1:C:336:GLU:HG2	1:C:337:PRO:HD2	1.88	0.56
1:C:331:ARG:HH11	1:C:331:ARG:HG2	1.71	0.55

*Continued on next page...*

*Continued from previous page...*

Atom-1	Atom-2	Interatomic distance (Å)	Clash overlap (Å)
1:D:444:VAL:HG22	1:D:444:VAL:O	2.06	0.55
1:C:149:SER:OG	1:C:150:LYS:NZ	2.27	0.55
1:A:192:SER:OG	1:A:193:GLY:N	2.40	0.54
1:C:187:SER:HB3	1:A:180:THR:HG23	1.90	0.53
1:E:415:ILE:O	1:E:415:ILE:HG22	2.09	0.52
1:A:135:ASP:OD2	1:A:266:ARG:NH2	2.40	0.51
1:C:263:GLU:N	1:C:263:GLU:OE1	2.43	0.51
1:D:417:VAL:HG13	1:D:439:ILE:HG23	1.92	0.51
1:C:135:ASP:OD2	1:C:266:ARG:NH2	2.44	0.51
1:C:60:GLY:O	1:C:87:PRO:HA	2.10	0.50
1:B:137:GLN:O	1:B:197:GLU:HB3	2.12	0.50
1:F:368:ALA:HB2	1:F:380:LEU:HG	1.93	0.50
1:B:61:THR:HA	1:B:87:PRO:HA	1.93	0.50
3:H:30:UNK:O	3:H:31:UNK:C	2.60	0.50
1:D:385:LEU:HD11	1:D:415:ILE:HG21	1.92	0.50
1:C:272:LYS:HB2	1:C:296:GLU:HB2	1.93	0.50
1:C:180:THR:HG23	1:B:187:SER:HB3	1.93	0.50
1:B:263:GLU:N	1:B:263:GLU:OE1	2.45	0.50
1:C:264:ILE:O	1:C:265:LYS:HE2	2.12	0.49
1:C:267:GLY:HA3	1:C:358:LEU:HD23	1.95	0.49
1:A:57:ARG:HG3	1:A:91:LEU:HD12	1.95	0.49
1:A:313:ILE:HB	1:A:346:LEU:HB3	1.94	0.49
1:A:277:SER:OG	1:A:278:ALA:N	2.45	0.48
1:E:385:LEU:N	1:E:389:GLY:O	2.40	0.48
1:B:101:LYS:HB3	1:B:101:LYS:HE3	1.65	0.48
1:B:254:LEU:HD22	1:B:264:ILE:HD12	1.96	0.48
1:A:264:ILE:HG21	1:A:266:ARG:NH2	2.29	0.47
1:B:312:ASP:HB2	1:B:345:LEU:HD21	1.97	0.47
1:D:375:LEU:HD22	1:D:408:LEU:HD11	1.96	0.47
1:B:318:ASN:HA	1:B:342:LYS:HZ2	1.79	0.47
1:B:345:LEU:HD22	1:B:346:LEU:H	1.79	0.47
1:A:253:THR:HG21	1:A:334:THR:HG23	1.96	0.47
1:B:91:LEU:HD21	1:B:173:ASN:OD1	2.15	0.46
1:D:385:LEU:HD21	1:D:444:VAL:HG11	1.97	0.46
1:F:390:LYS:O	1:F:421:ARG:NH2	2.39	0.46
1:E:443:ILE:HD11	1:E:450:ILE:HB	1.98	0.46
1:C:163:ARG:NH1	1:A:47:GLU:OE1	2.48	0.46
1:A:133:GLY:HA3	1:A:258:LEU:HD22	1.97	0.46
1:A:187:SER:HB3	1:B:180:THR:HG23	1.98	0.46
1:B:59:GLU:HG3	1:B:89:GLU:HG3	1.97	0.46
1:F:398:VAL:HB	1:F:401:SER:HB3	1.98	0.45

*Continued on next page...*

*Continued from previous page...*

Atom-1	Atom-2	Interatomic distance (Å)	Clash overlap (Å)
1:B:116:LYS:HE3	1:B:116:LYS:HB3	1.60	0.45
1:E:443:ILE:HG12	1:E:450:ILE:O	2.17	0.45
1:A:150:LYS:HE2	1:A:150:LYS:HB2	1.64	0.44
1:B:233:LEU:HD12	1:B:234:ALA:N	2.32	0.44
1:A:57:ARG:NH2	1:A:126:GLU:HG2	2.33	0.44
1:C:350:LYS:HA	1:C:351:PRO:HD3	1.87	0.44
1:B:359:ASP:OD1	1:B:359:ASP:N	2.45	0.44
1:C:108:ASN:HB3	1:C:139:ASP:OD1	2.18	0.43
1:B:109:HIS:HE1	4:I:32:UNK:O	2.01	0.43
1:E:443:ILE:HG13	1:E:444:VAL:N	2.33	0.43
1:F:443:ILE:O	1:F:444:VAL:HG23	2.19	0.43
1:B:156:ILE:HD13	1:B:252:ARG:HG3	2.01	0.43
1:B:137:GLN:HG3	1:B:198:GLY:HA3	2.00	0.43
1:E:394:ILE:HG12	1:E:412:ASP:O	2.19	0.42
1:E:453:LEU:HD12	1:E:453:LEU:HA	1.91	0.42
1:C:241:GLY:O	1:C:242:ILE:HD13	2.18	0.42
1:A:108:ASN:HB3	1:A:139:ASP:OD1	2.20	0.42
1:B:57:ARG:NH2	1:B:120:GLN:HB2	2.35	0.42
1:F:407:GLY:O	1:F:445:ARG:NH2	2.53	0.42
1:A:139:ASP:HB2	1:A:197:GLU:HG2	2.02	0.42
1:A:332:ILE:HD13	1:A:332:ILE:HA	1.90	0.42
1:F:380:LEU:HD22	1:F:394:ILE:HD12	2.01	0.42
1:C:86:GLN:HA	1:C:87:PRO:HD3	1.90	0.42
1:A:135:ASP:OD2	1:A:264:ILE:HG13	2.20	0.42
1:B:350:LYS:HA	1:B:351:PRO:HD3	1.93	0.42
1:C:61:THR:HA	1:C:87:PRO:HA	2.02	0.41
1:C:97:ILE:HD13	1:C:97:ILE:HA	1.89	0.41
1:E:415:ILE:HD12	1:E:415:ILE:N	2.36	0.41
1:C:201:ASN:ND2	1:C:331:ARG:HH12	2.19	0.41
1:B:135:ASP:OD1	1:B:266:ARG:NH2	2.53	0.41
1:A:275:GLU:OE1	1:A:324:SER:OG	2.31	0.41
1:B:275:GLU:HG2	1:B:325:PHE:HB3	2.03	0.41
1:B:275:GLU:OE2	1:B:325:PHE:N	2.52	0.40
1:C:227:GLY:HA2	1:C:246:ILE:O	2.21	0.40

There are no symmetry-related clashes.

## 5.3 Torsion angles [i](#)

### 5.3.1 Protein backbone [i](#)

In the following table, the Percentiles column shows the percent Ramachandran outliers of the chain as a percentile score with respect to all PDB entries followed by that with respect to all EM entries.

The Analysed column shows the number of residues for which the backbone conformation was analysed, and the total number of residues.

Mol	Chain	Analysed	Favoured	Allowed	Outliers	Percentiles	
1	A	296/463 (64%)	290 (98%)	6 (2%)	0	100	100
1	B	296/463 (64%)	291 (98%)	5 (2%)	0	100	100
1	C	296/463 (64%)	292 (99%)	4 (1%)	0	100	100
1	D	83/463 (18%)	77 (93%)	4 (5%)	2 (2%)	5	8
1	E	88/463 (19%)	81 (92%)	5 (6%)	2 (2%)	5	8
1	F	89/463 (19%)	86 (97%)	2 (2%)	1 (1%)	12	23
All	All	1148/2778 (41%)	1117 (97%)	26 (2%)	5 (0%)	32	49

All (5) Ramachandran outliers are listed below:

Mol	Chain	Res	Type
1	D	443	ILE
1	E	443	ILE
1	E	444	VAL
1	F	443	ILE
1	D	444	VAL

### 5.3.2 Protein sidechains [i](#)

In the following table, the Percentiles column shows the percent sidechain outliers of the chain as a percentile score with respect to all PDB entries followed by that with respect to all EM entries.

The Analysed column shows the number of residues for which the sidechain conformation was analysed, and the total number of residues.

Mol	Chain	Analysed	Rotameric	Outliers	Percentiles	
1	A	233/362 (64%)	219 (94%)	14 (6%)	16	33
1	B	233/362 (64%)	218 (94%)	15 (6%)	14	30
1	C	233/362 (64%)	220 (94%)	13 (6%)	17	36

*Continued on next page...*



*Continued from previous page...*

Mol	Chain	Analysed	Rotameric	Outliers	Percentiles	
1	D	66/362 (18%)	63 (96%)	3 (4%)	23	46
1	E	69/362 (19%)	65 (94%)	4 (6%)	17	34
1	F	70/362 (19%)	67 (96%)	3 (4%)	25	48
All	All	904/2172 (42%)	852 (94%)	52 (6%)	19	34

All (52) residues with a non-rotameric sidechain are listed below:

Mol	Chain	Res	Type
1	D	370	MET
1	D	420	ASP
1	D	443	ILE
1	E	442	GLN
1	E	449	SER
1	E	452	LEU
1	E	454	MET
1	F	420	ASP
1	F	443	ILE
1	F	454	MET
1	C	45	MET
1	C	57	ARG
1	C	89	GLU
1	C	116	LYS
1	C	118	SER
1	C	126	GLU
1	C	135	ASP
1	C	136	ASP
1	C	211	ARG
1	C	276	MET
1	C	279	ASP
1	C	345	LEU
1	C	353	GLU
1	A	45	MET
1	A	47	GLU
1	A	57	ARG
1	A	107	ASN
1	A	118	SER
1	A	128	ASP
1	A	136	ASP
1	A	149	SER
1	A	156	ILE
1	A	173	ASN

*Continued on next page...*

*Continued from previous page...*

Mol	Chain	Res	Type
1	A	265	LYS
1	A	279	ASP
1	A	289	GLN
1	A	303	SER
1	B	45	MET
1	B	57	ARG
1	B	93	SER
1	B	100	SER
1	B	136	ASP
1	B	150	LYS
1	B	206	ASP
1	B	250	MET
1	B	252	ARG
1	B	265	LYS
1	B	268	LEU
1	B	276	MET
1	B	279	ASP
1	B	339	THR
1	B	360	THR

Sometimes sidechains can be flipped to improve hydrogen bonding and reduce clashes. All (4) such sidechains are listed below:

Mol	Chain	Res	Type
1	A	213	ASN
1	B	107	ASN
1	B	109	HIS
1	B	213	ASN

### 5.3.3 RNA [i](#)

There are no RNA molecules in this entry.

### 5.4 Non-standard residues in protein, DNA, RNA chains [i](#)

There are no non-standard protein/DNA/RNA residues in this entry.

### 5.5 Carbohydrates [i](#)

There are no oligosaccharides in this entry.

## 5.6 Ligand geometry [i](#)

There are no ligands in this entry.

## 5.7 Other polymers [i](#)

There are no such residues in this entry.

## 5.8 Polymer linkage issues [i](#)

There are no chain breaks in this entry.

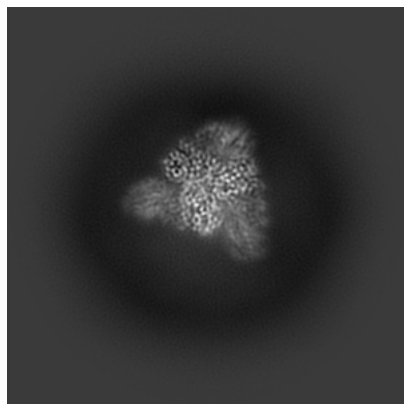
## 6 Map visualisation [i](#)

This section contains visualisations of the EMDB entry EMD-37257. These allow visual inspection of the internal detail of the map and identification of artifacts.

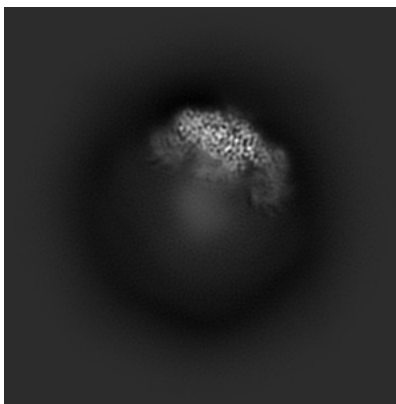
Images derived from a raw map, generated by summing the deposited half-maps, are presented below the corresponding image components of the primary map to allow further visual inspection and comparison with those of the primary map.

### 6.1 Orthogonal projections [i](#)

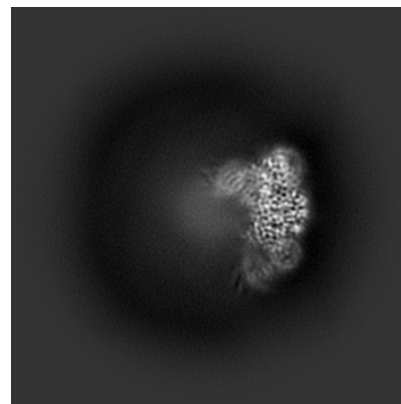
#### 6.1.1 Primary map



X

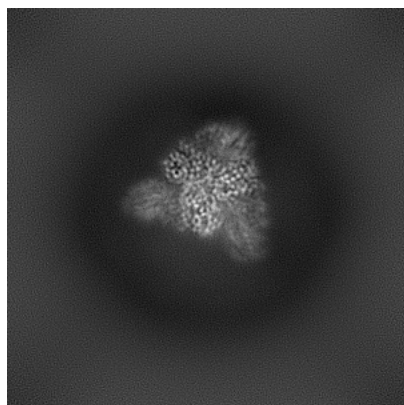


Y

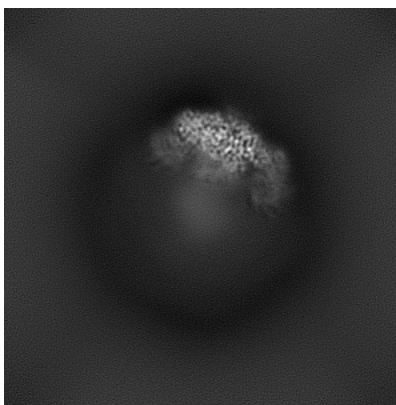


Z

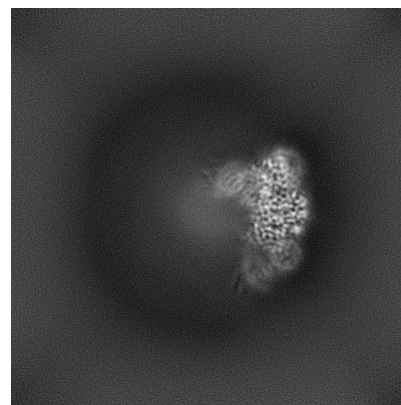
#### 6.1.2 Raw map



X



Y

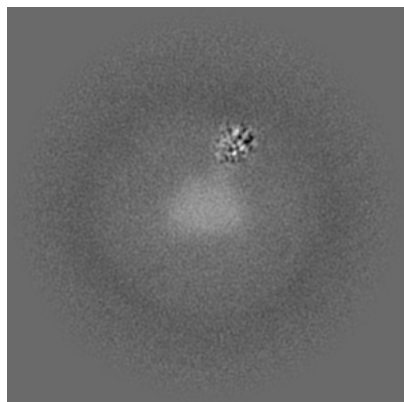


Z

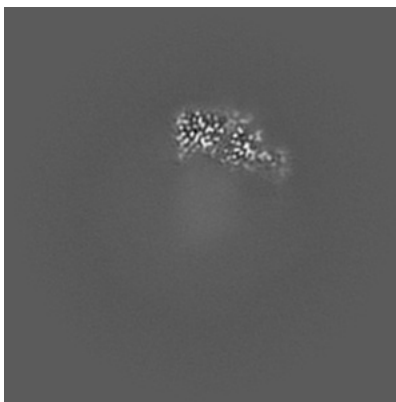
The images above show the map projected in three orthogonal directions.

## 6.2 Central slices [i](#)

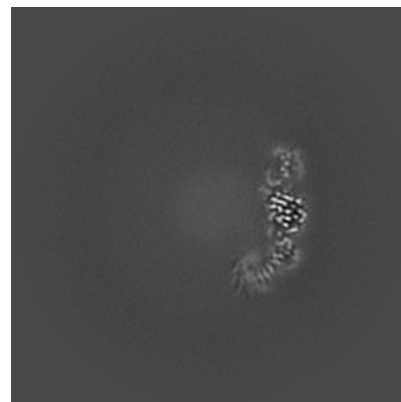
### 6.2.1 Primary map



X Index: 180

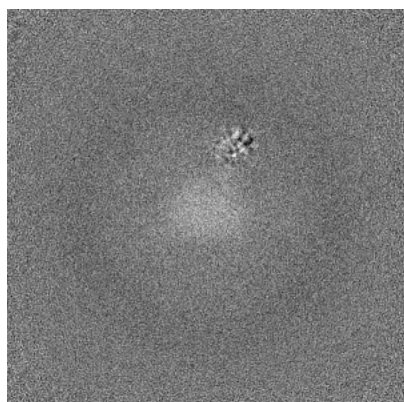


Y Index: 180

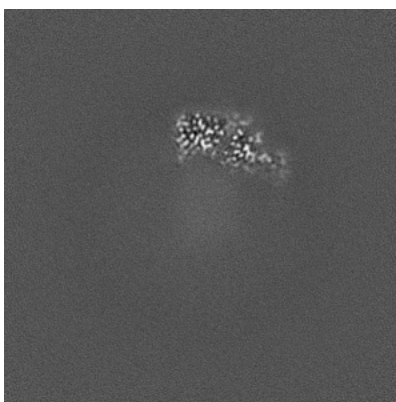


Z Index: 180

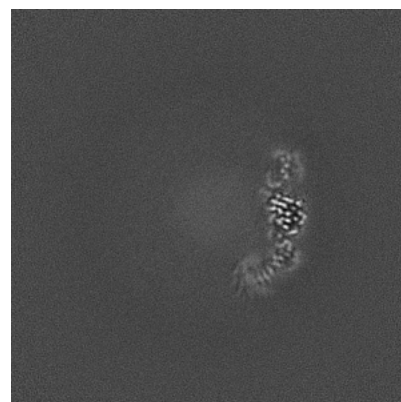
### 6.2.2 Raw map



X Index: 180



Y Index: 180

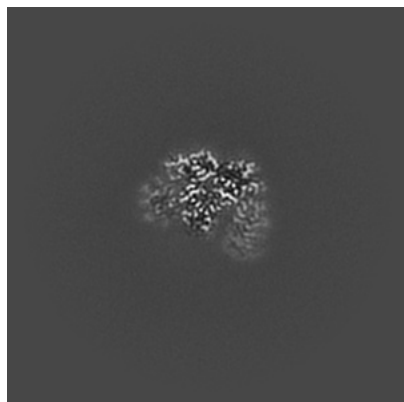


Z Index: 180

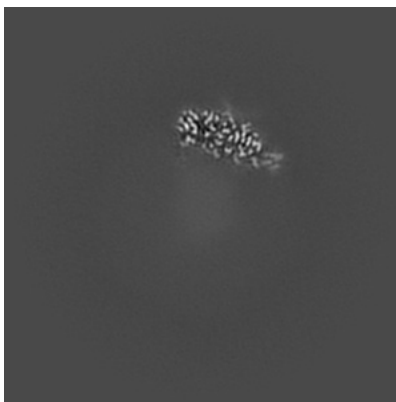
The images above show central slices of the map in three orthogonal directions.

## 6.3 Largest variance slices [i](#)

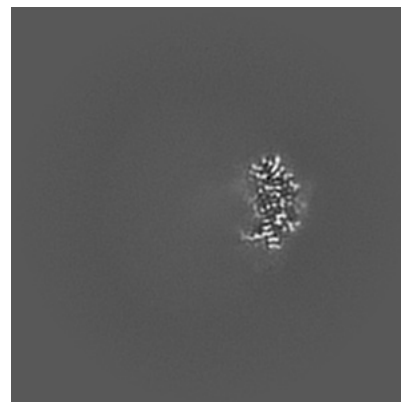
### 6.3.1 Primary map



X Index: 244

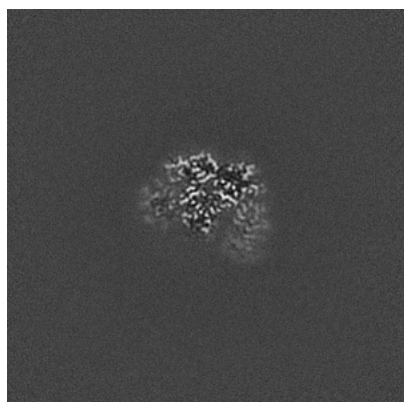


Y Index: 172

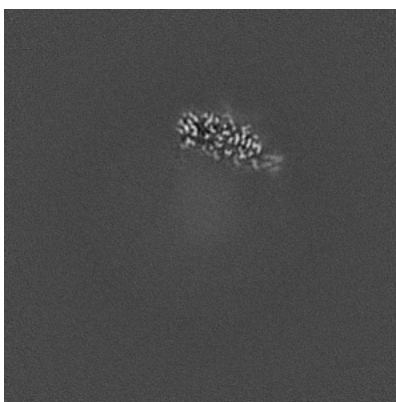


Z Index: 209

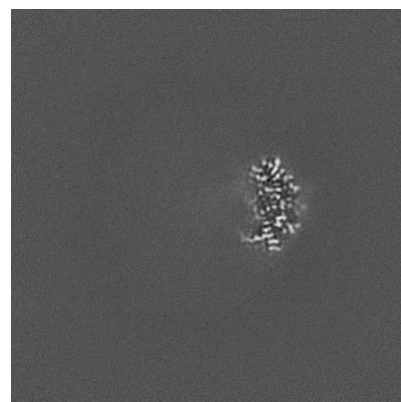
### 6.3.2 Raw map



X Index: 244



Y Index: 172

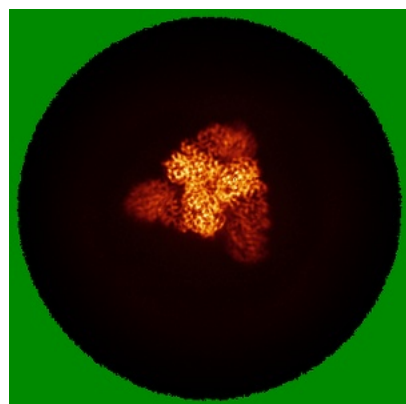


Z Index: 209

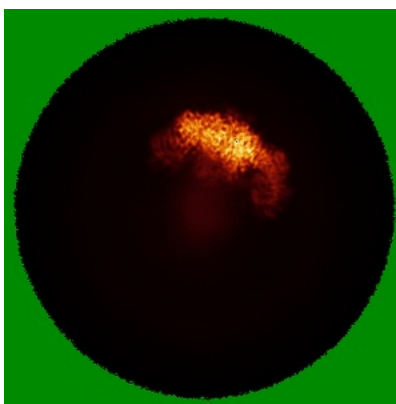
The images above show the largest variance slices of the map in three orthogonal directions.

## 6.4 Orthogonal standard-deviation projections (False-color) [i](#)

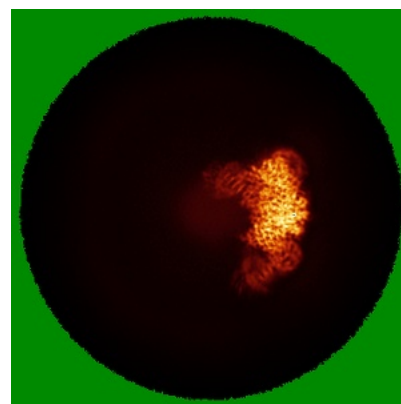
### 6.4.1 Primary map



X

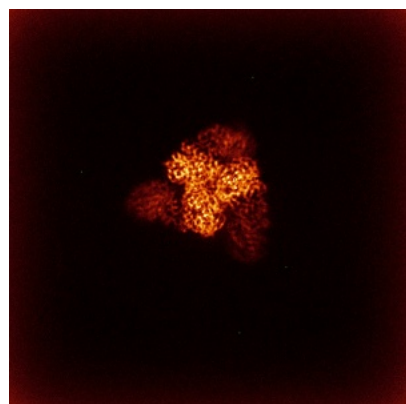


Y

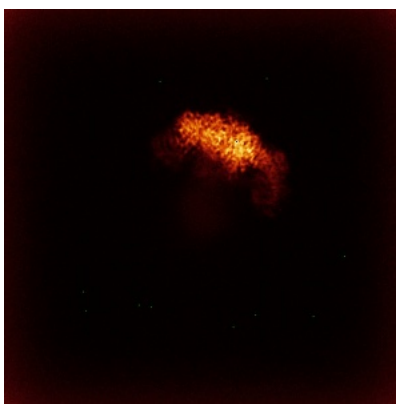


Z

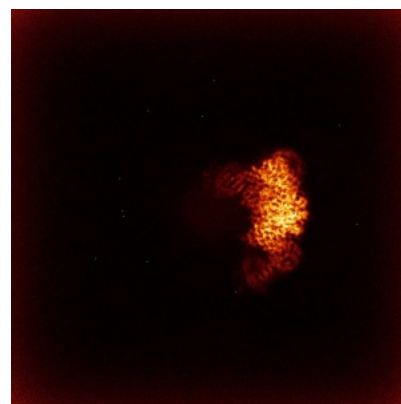
### 6.4.2 Raw map



X



Y



Z

The images above show the map standard deviation projections with false color in three orthogonal directions. Minimum values are shown in green, max in blue, and dark to light orange shades represent small to large values respectively.

## 6.5 Orthogonal surface views [i](#)

### 6.5.1 Primary map



The images above show the 3D surface view of the map at the recommended contour level 0.1. These images, in conjunction with the slice images, may facilitate assessment of whether an appropriate contour level has been provided.

### 6.5.2 Raw map



These images show the 3D surface of the raw map. The raw map's contour level was selected so that its surface encloses the same volume as the primary map does at its recommended contour level.

## 6.6 Mask visualisation [i](#)

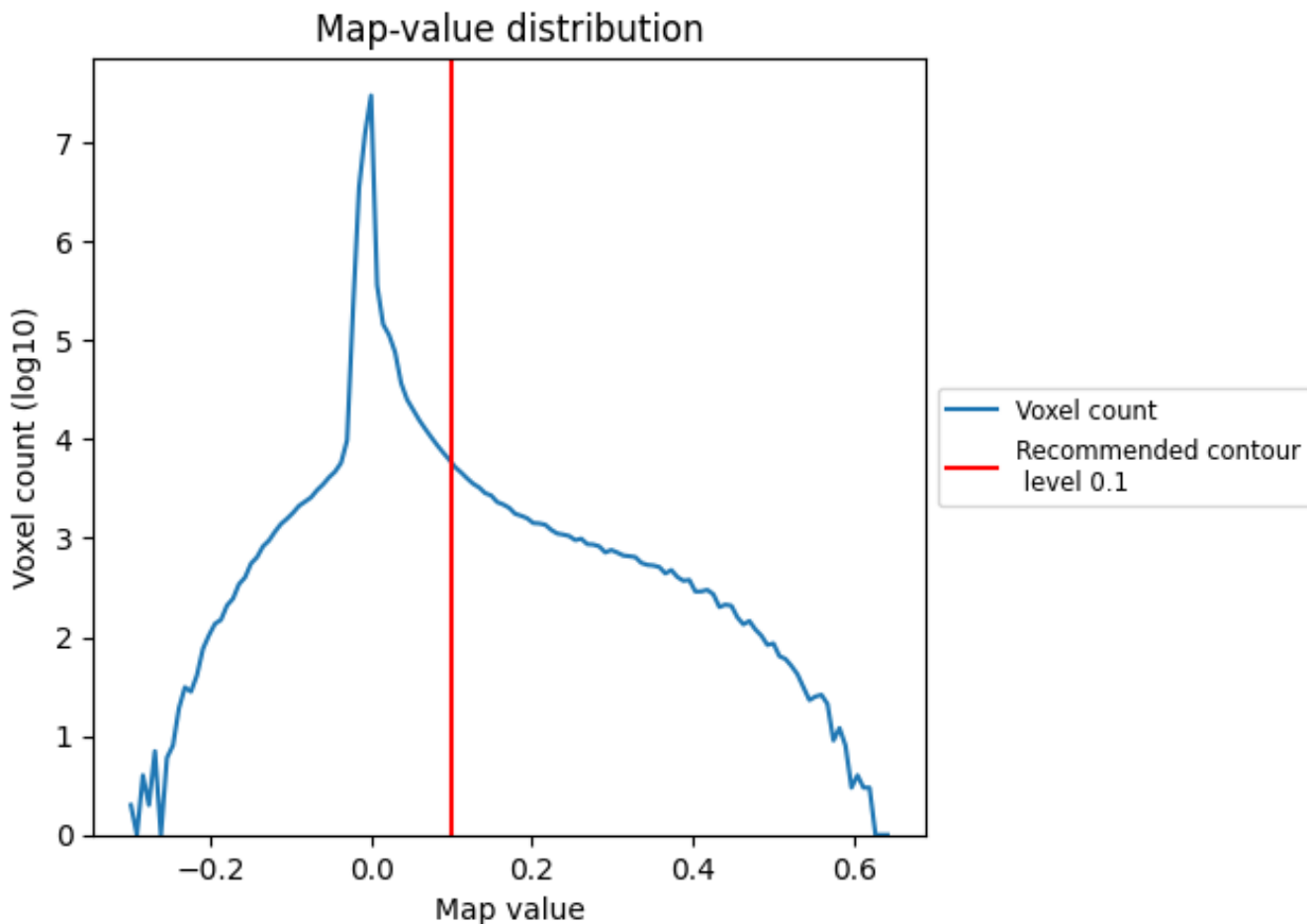
This section was not generated. No masks/segmentation were deposited.



## 7 Map analysis [i](#)

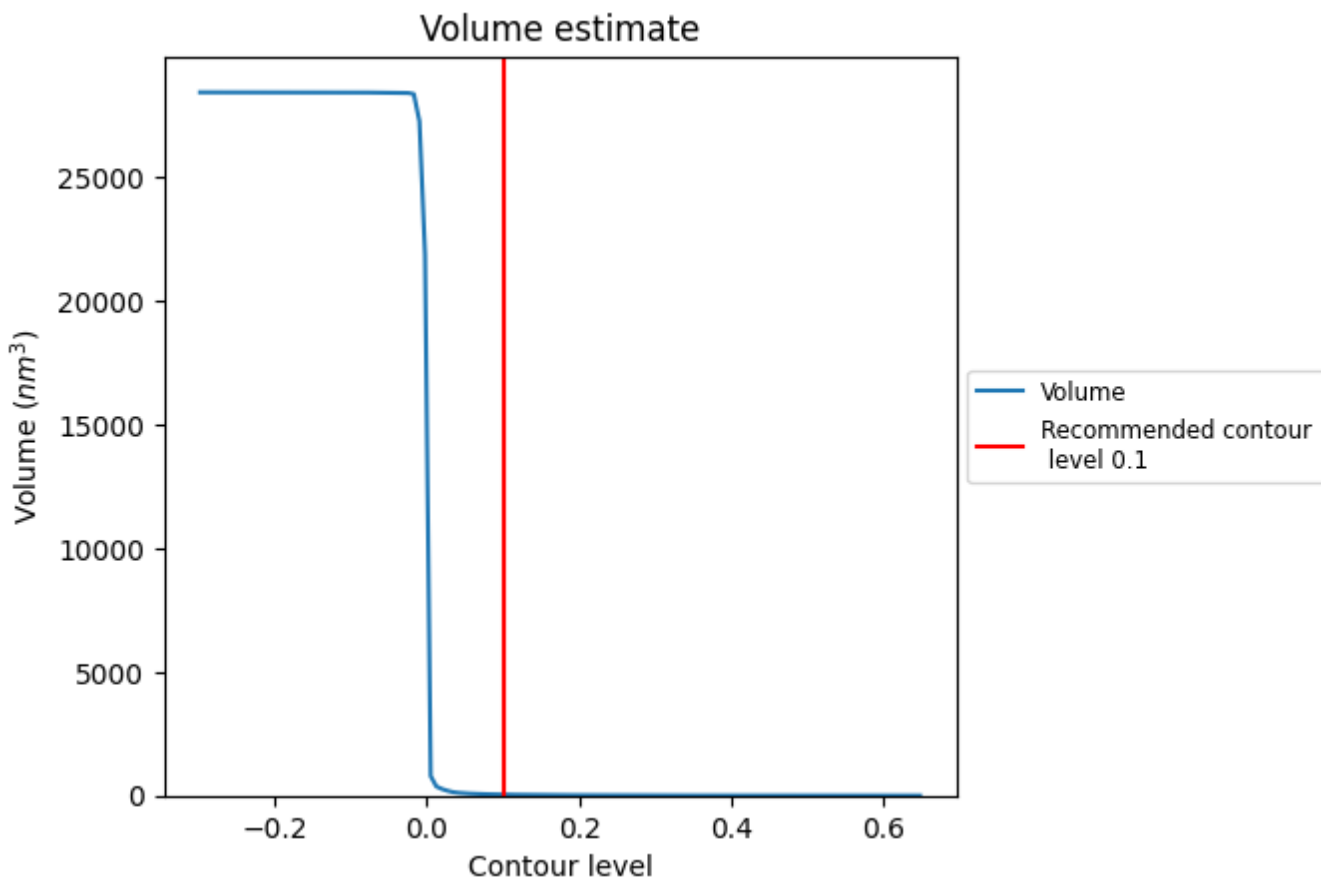
This section contains the results of statistical analysis of the map.

### 7.1 Map-value distribution [i](#)



The map-value distribution is plotted in 128 intervals along the x-axis. The y-axis is logarithmic. A spike in this graph at zero usually indicates that the volume has been masked.

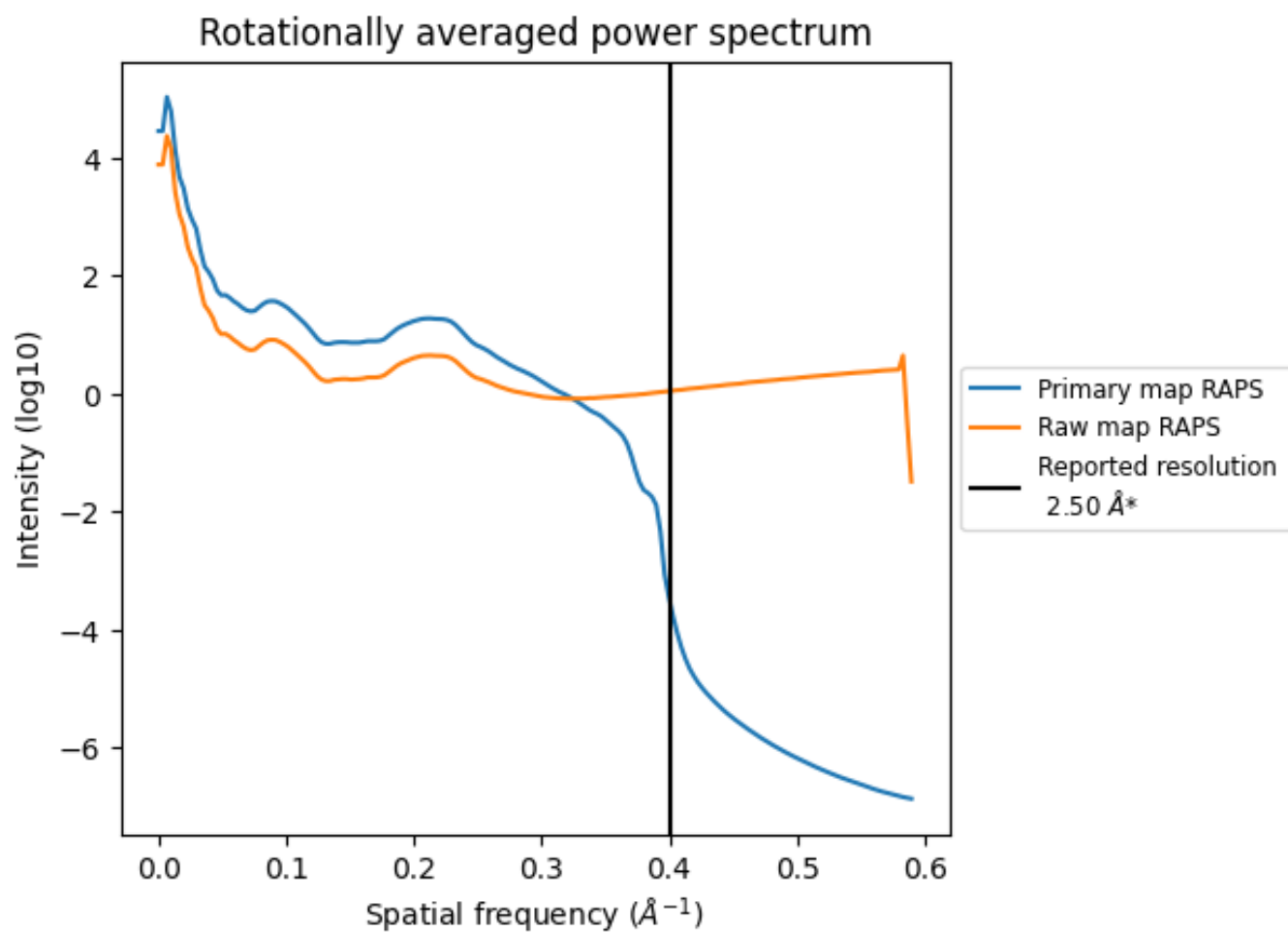
## 7.2 Volume estimate [\(i\)](#)



The volume at the recommended contour level is 40  $\text{nm}^3$ ; this corresponds to an approximate mass of 36 kDa.

The volume estimate graph shows how the enclosed volume varies with the contour level. The recommended contour level is shown as a vertical line and the intersection between the line and the curve gives the volume of the enclosed surface at the given level.

### 7.3 Rotationally averaged power spectrum i

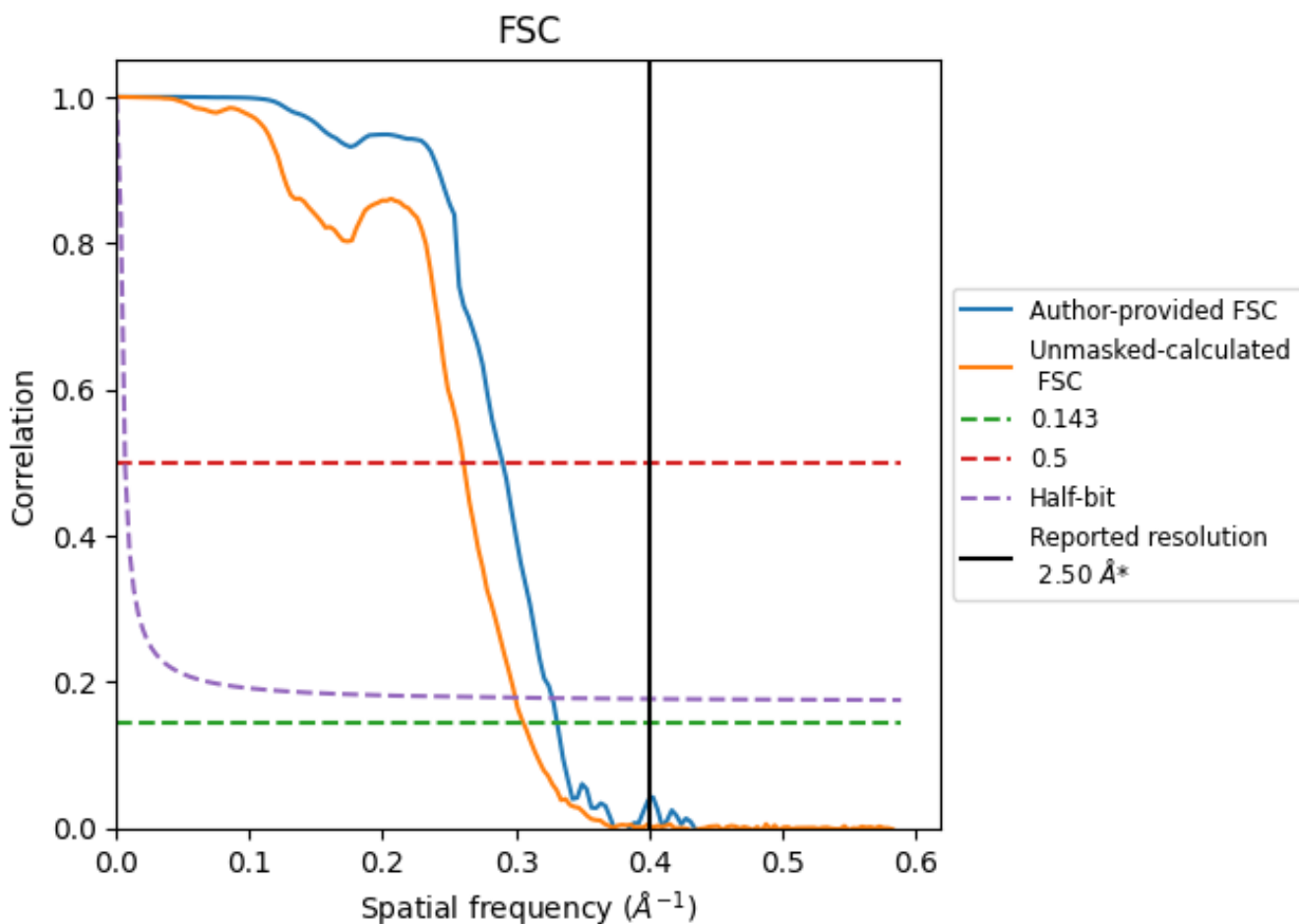


\*Reported resolution corresponds to spatial frequency of 0.400 Å<sup>-1</sup>

## 8 Fourier-Shell correlation [i](#)

Fourier-Shell Correlation (FSC) is the most commonly used method to estimate the resolution of single-particle and subtomogram-averaged maps. The shape of the curve depends on the imposed symmetry, mask and whether or not the two 3D reconstructions used were processed from a common reference. The reported resolution is shown as a black line. A curve is displayed for the half-bit criterion in addition to lines showing the 0.143 gold standard cut-off and 0.5 cut-off.

### 8.1 FSC [i](#)



\*Reported resolution corresponds to spatial frequency of 0.400 Å<sup>-1</sup>

## 8.2 Resolution estimates [i](#)

Resolution estimate (Å)	Estimation criterion (FSC cut-off)		
	0.143	0.5	Half-bit
Reported by author	2.50	-	-
Author-provided FSC curve	3.02	3.45	3.05
Unmasked-calculated*	3.27	3.84	3.34

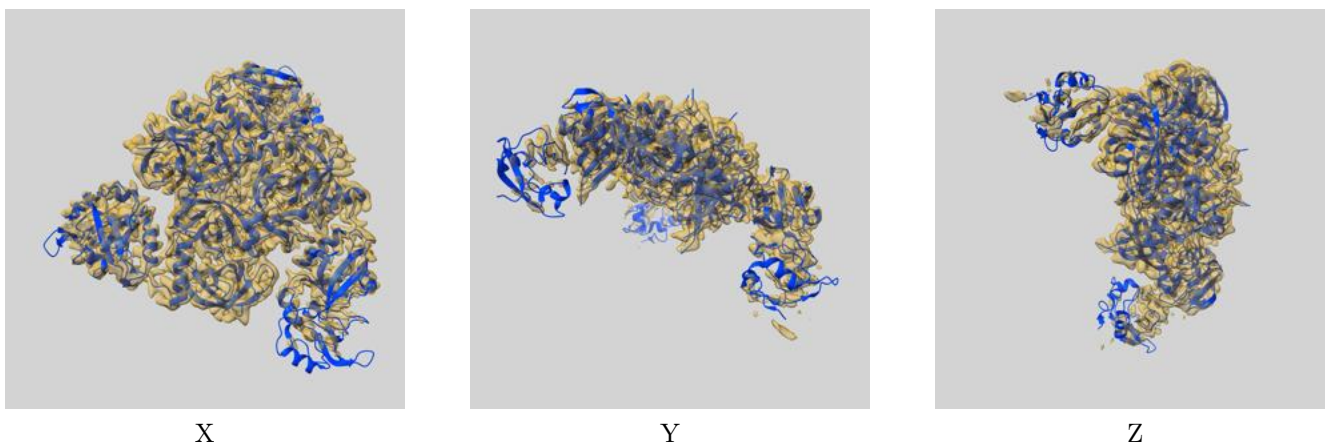
\*Resolution estimate based on FSC curve calculated by comparison of deposited half-maps. The value from author-provided FSC intersecting FSC 0.143 CUT-OFF 3.02 differs from the reported value 2.5 by more than 10 %

The value from deposited half-maps intersecting FSC 0.143 CUT-OFF 3.27 differs from the reported value 2.5 by more than 10 %

## 9 Map-model fit [i](#)

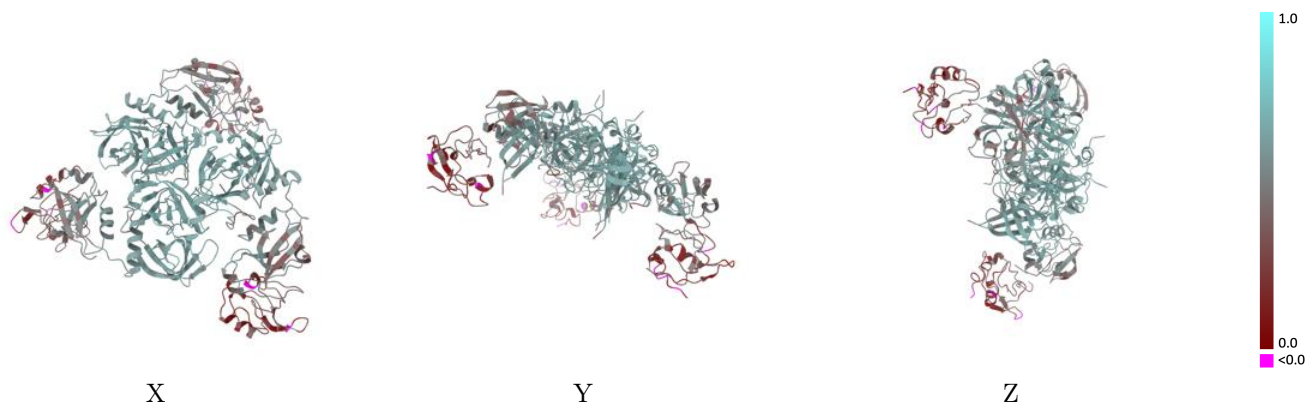
This section contains information regarding the fit between EMDB map EMD-37257 and PDB model 8KIC. Per-residue inclusion information can be found in section 3 on page 7.

### 9.1 Map-model overlay [i](#)



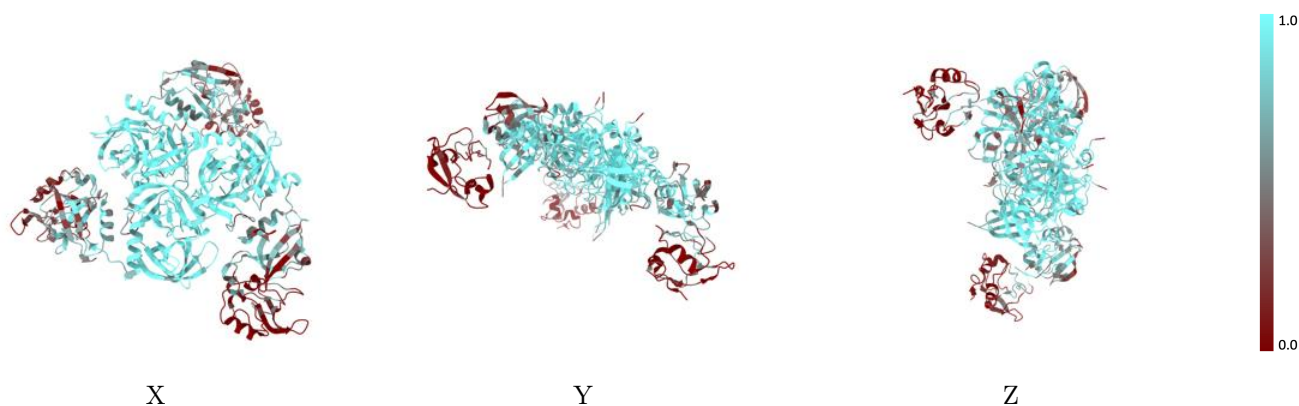
The images above show the 3D surface view of the map at the recommended contour level 0.1 at 50% transparency in yellow overlaid with a ribbon representation of the model coloured in blue. These images allow for the visual assessment of the quality of fit between the atomic model and the map.

## 9.2 Q-score mapped to coordinate model [\(i\)](#)



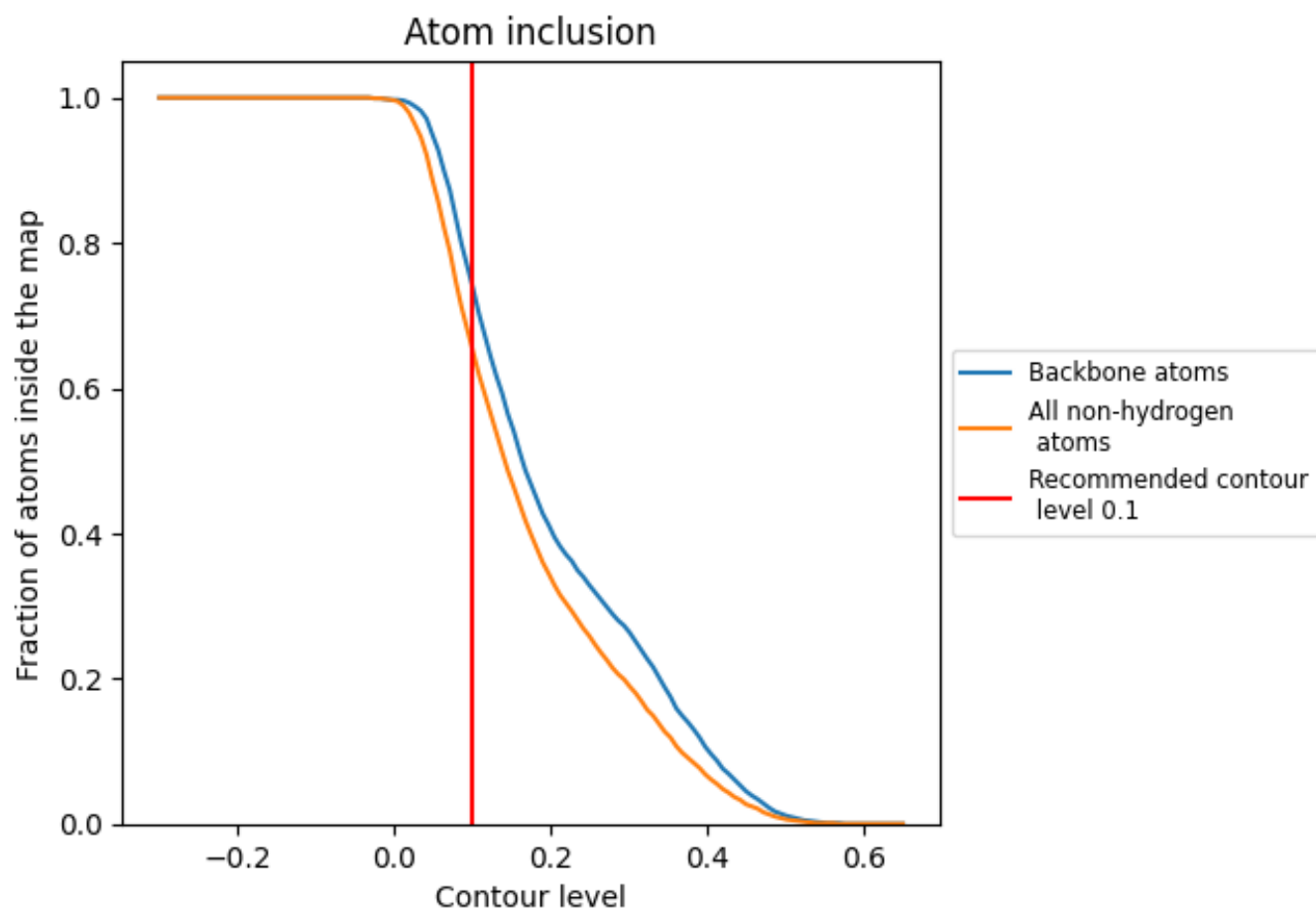
The images above show the model with each residue coloured according to its Q-score. This shows their resolvability in the map with higher Q-score values reflecting better resolvability. Please note: Q-score is calculating the resolvability of atoms, and thus high values are only expected at resolutions at which atoms can be resolved. Low Q-score values may therefore be expected for many entries.

## 9.3 Atom inclusion mapped to coordinate model [\(i\)](#)



The images above show the model with each residue coloured according to its atom inclusion. This shows to what extent they are inside the map at the recommended contour level (0.1).

## 9.4 Atom inclusion [i](#)






















At the recommended contour level, 74% of all backbone atoms, 66% of all non-hydrogen atoms, are inside the map.



## 9.5 Map-model fit summary

The table lists the average atom inclusion at the recommended contour level (0.1) and Q-score for the entire model and for each chain.

Chain	Atom inclusion	Q-score
All	 0.6550	 0.4940
A	 0.8040	 0.5620
B	 0.8120	 0.5610
C	 0.7650	 0.5540
D	 0.2020	 0.2710
E	 0.2380	 0.2920
F	 0.1100	 0.2630
G	 0.7750	 0.5310
H	 0.8400	 0.5520
I	 0.8290	 0.5270

