



Full wwPDB X-ray Structure Validation Report ⓘ

Mar 9, 2024 – 11:47 AM EST

PDB ID : 3KIF
Title : The crystal structures of two fragments truncated from 5-bladed beta-propeller lectin, tachylectin-2 (Lib1-B7-18 and Lib2-D2-15)
Authors : Dym, O.; Tawfik, D.S.; Yadid, I.; Israel Structural Proteomics Center (ISPC)
Deposited on : 2009-11-02
Resolution : 2.50 Å(reported)

This is a Full wwPDB X-ray Structure Validation Report for a publicly released PDB entry.

We welcome your comments at validation@mail.wwpdb.org

A user guide is available at

<https://www.wwpdb.org/validation/2017/XrayValidationReportHelp>

with specific help available everywhere you see the ⓘ symbol.

The types of validation reports are described at

<http://www.wwpdb.org/validation/2017/FAQs#types>.

The following versions of software and data (see [references ⓘ](#)) were used in the production of this report:

MolProbity : 4.02b-467
Mogul : 1.8.5 (274361), CSD as541be (2020)
Xtriage (Phenix) : 1.13
EDS : 2.36
Percentile statistics : 20191225.v01 (using entries in the PDB archive December 25th 2019)
Refmac : 5.8.0158
CCP4 : 7.0.044 (Gargrove)
Ideal geometry (proteins) : Engh & Huber (2001)
Ideal geometry (DNA, RNA) : Parkinson et al. (1996)
Validation Pipeline (wwPDB-VP) : 2.36

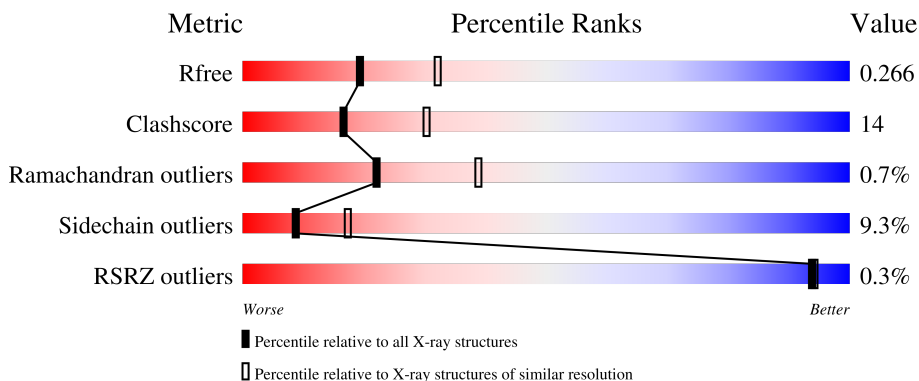
1 Overall quality at a glance

The following experimental techniques were used to determine the structure:

X-RAY DIFFRACTION


The reported resolution of this entry is 2.50 Å.

Percentile scores (ranging between 0-100) for global validation metrics of the entry are shown in the following graphic. The table shows the number of entries on which the scores are based.



Metric	Whole archive (#Entries)	Similar resolution (#Entries, resolution range(Å))
R_{free}	130704	4661 (2.50-2.50)
Clashscore	141614	5346 (2.50-2.50)
Ramachandran outliers	138981	5231 (2.50-2.50)
Sidechain outliers	138945	5233 (2.50-2.50)
RSRZ outliers	127900	4559 (2.50-2.50)

The table below summarises the geometric issues observed across the polymeric chains and their fit to the electron density. The red, orange, yellow and green segments of the lower bar indicate the fraction of residues that contain outliers for ≥ 3 , 2, 1 and 0 types of geometric quality criteria respectively. A grey segment represents the fraction of residues that are not modelled. The numeric value for each fraction is indicated below the corresponding segment, with a dot representing fractions $\leq 5\%$. The upper red bar (where present) indicates the fraction of residues that have poor fit to the electron density. The numeric value is given above the bar.

Mol	Chain	Length	Quality of chain
1	A	106	
1	B	106	
1	C	106	
1	D	106	
1	E	106	

Continued on next page...

Continued from previous page...

Mol	Chain	Length	Quality of chain
1	F	106	 55% 28% 6% 11%
1	G	106	 59% 20% 2% 19%
1	H	106	 42% 29% 6% 23%
1	I	106	 63% 22% 2% 13%
1	J	106	 62% 22% 2% 14%

The following table lists non-polymeric compounds, carbohydrate monomers and non-standard residues in protein, DNA, RNA chains that are outliers for geometric or electron-density-fit criteria:

Mol	Type	Chain	Res	Chirality	Geometry	Clashes	Electron density
2	GDL	J	110	-	-	X	-

2 Entry composition [i](#)

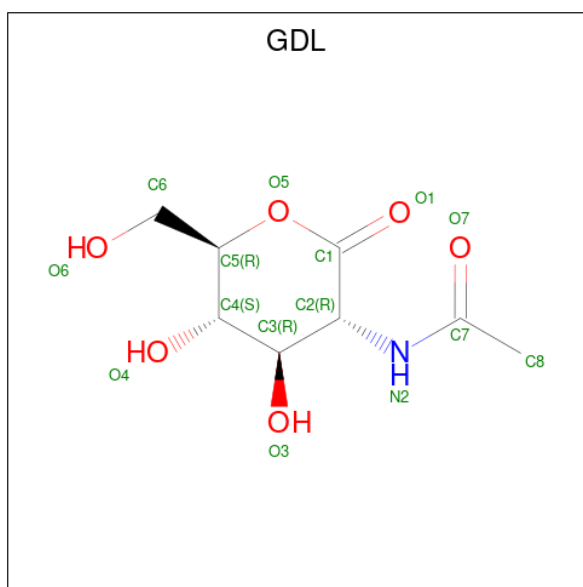
There are 4 unique types of molecules in this entry. The entry contains 7530 atoms, of which 0 are hydrogens and 0 are deuteriums.

In the tables below, the ZeroOcc column contains the number of atoms modelled with zero occupancy, the AltConf column contains the number of residues with at least one atom in alternate conformation and the Trace column contains the number of residues modelled with at most 2 atoms.

- Molecule 1 is a protein called 5-bladed beta-propeller lectin.

Mol	Chain	Residues	Atoms					ZeroOcc	AltConf	Trace
			Total	C	N	O	S			
1	A	93	Total 756	C 494	N 126	O 135	S 1	0	0	0
1	B	88	Total 719	C 474	N 120	O 124	S 1	0	0	0
1	C	85	Total 689	C 455	N 112	O 122		0	0	0
1	D	91	Total 740	C 486	N 124	O 129	S 1	0	0	0
1	E	93	Total 757	C 495	N 128	O 133	S 1	0	0	0
1	F	92	Total 748	C 490	N 125	O 132	S 1	0	0	0
1	G	88	Total 719	C 474	N 120	O 124	S 1	0	0	0
1	H	85	Total 689	C 455	N 112	O 122		0	0	0
1	I	94	Total 762	C 497	N 127	O 137	S 1	0	0	0
1	J	93	Total 757	C 495	N 128	O 133	S 1	0	0	0

- Molecule 2 is 2-(acetylamido)-2-deoxy-D-glucono-1,5-lactone (three-letter code: GDL) (formula: C₈H₁₃NO₆).



Mol	Chain	Residues	Atoms				ZeroOcc	AltConf
			Total	C	N	O		
2	A	1	Total	C	N	O	0	0
			15	8	1	6		
2	B	1	Total	C	N	O	0	0
			15	8	1	6		
2	D	1	Total	C	N	O	0	0
			15	8	1	6		
2	D	1	Total	C	N	O	0	0
			15	8	1	6		
2	E	1	Total	C	N	O	0	0
			15	8	1	6		
2	F	1	Total	C	N	O	0	0
			15	8	1	6		
2	G	1	Total	C	N	O	0	0
			15	8	1	6		
2	I	1	Total	C	N	O	0	0
			15	8	1	6		
2	J	1	Total	C	N	O	0	0
			15	8	1	6		

- Molecule 3 is SULFATE ION (three-letter code: SO4) (formula: O₄S).



Mol	Chain	Residues	Atoms			ZeroOcc	AltConf
3	E	1	Total	O	S	0	0
			5	4	1		
3	J	1	Total	O	S	0	0
			5	4	1		

- Molecule 4 is water.

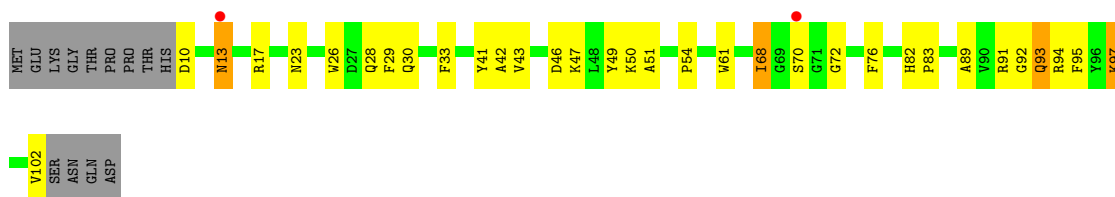
Mol	Chain	Residues	Atoms		ZeroOcc	AltConf
4	A	2	Total	O	0	0
			2	2		
4	B	3	Total	O	0	0
			3	3		
4	C	2	Total	O	0	0
			2	2		
4	D	7	Total	O	0	0
			7	7		
4	E	3	Total	O	0	0
			3	3		
4	F	3	Total	O	0	0
			3	3		
4	G	6	Total	O	0	0
			6	6		
4	H	3	Total	O	0	0
			3	3		
4	I	5	Total	O	0	0
			5	5		
4	J	15	Total	O	0	0
			15	15		

3 Residue-property plots [i](#)

These plots are drawn for all protein, RNA, DNA and oligosaccharide chains in the entry. The first graphic for a chain summarises the proportions of the various outlier classes displayed in the second graphic. The second graphic shows the sequence view annotated by issues in geometry and electron density. Residues are color-coded according to the number of geometric quality criteria for which they contain at least one outlier: green = 0, yellow = 1, orange = 2 and red = 3 or more. A red dot above a residue indicates a poor fit to the electron density ($RSRZ > 2$). Stretches of 2 or more consecutive residues without any outlier are shown as a green connector. Residues present in the sample, but not in the model, are shown in grey.

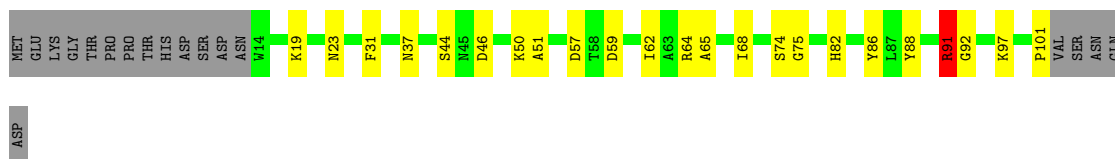
- Molecule 1: 5-bladed beta-propeller lectin

Chain A: 2% 57% 27% 12%



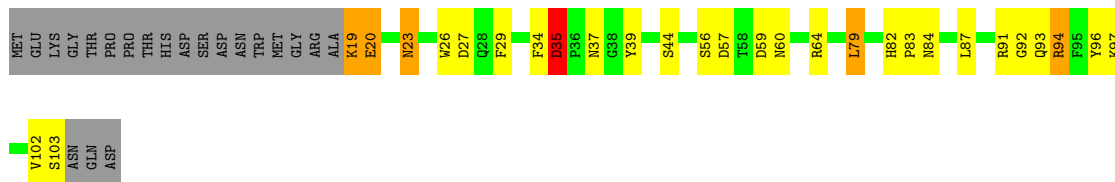
- Molecule 1: 5-bladed beta-propeller lectin

Chain B: 61% 21% 17%



- Molecule 1: 5-bladed beta-propeller lectin

Chain C: 53% 22% 5% 20%



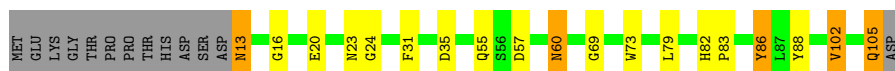
- Molecule 1: 5-bladed beta-propeller lectin

Chain D: 70% 14% 14%



- Molecule 1: 5-bladed beta-propeller lectin

Chain E:  70% 13% 5% 12%



- Molecule 1: 5-bladed beta-propeller lectin

Chain F:  55% 28% 13%



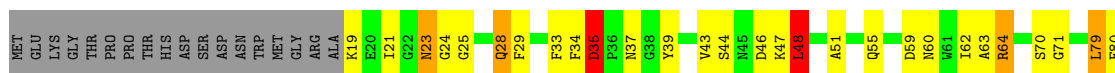
- Molecule 1: 5-bladed beta-propeller lectin

Chain G:  59% 20% 17%



- Molecule 1: 5-bladed beta-propeller lectin

Chain H:  42% 29% 6% 20%



- Molecule 1: 5-bladed beta-propeller lectin

Chain I:  63% 22% 11%



- Molecule 1: 5-bladed beta-propeller lectin

Chain J:  62% 22% 12%



4 Data and refinement statistics i

Property	Value	Source
Space group	P 32	Depositor
Cell constants a, b, c, α , β , γ	80.56Å 80.56Å 170.68Å 90.00° 90.00° 120.00°	Depositor
Resolution (Å)	50.00 – 2.50 44.09 – 2.50	Depositor EDS
% Data completeness (in resolution range)	99.1 (50.00-2.50) 99.1 (44.09-2.50)	Depositor EDS
R_{merge}	0.12	Depositor
R_{sym}	0.11	Depositor
$\langle I/\sigma(I) \rangle$ ¹	4.71 (at 2.51Å)	Xtrriage
Refinement program	REFMAC 5.2.0019	Depositor
R, R_{free}	0.213 , 0.276 0.202 , 0.266	Depositor DCC
R_{free} test set	2145 reflections (5.04%)	wwPDB-VP
Wilson B-factor (Å ²)	42.5	Xtrriage
Anisotropy	0.036	Xtrriage
Bulk solvent k_{sol} (e/Å ³), B_{sol} (Å ²)	0.33 , 5.2	EDS
L-test for twinning ²	$\langle L \rangle = 0.49$, $\langle L^2 \rangle = 0.32$	Xtrriage
Estimated twinning fraction	0.032 for -h,-k,l 0.469 for h,-h-k,-l 0.032 for -k,-h,-l	Xtrriage
F_o, F_c correlation	0.94	EDS
Total number of atoms	7530	wwPDB-VP
Average B, all atoms (Å ²)	36.0	wwPDB-VP

Xtrriage's analysis on translational NCS is as follows: *The largest off-origin peak in the Patterson function is 3.67% of the height of the origin peak. No significant pseudotranslation is detected.*

¹Intensities estimated from amplitudes.

²Theoretical values of $\langle |L| \rangle$, $\langle L^2 \rangle$ for acentric reflections are 0.5, 0.333 respectively for untwinned datasets, and 0.375, 0.2 for perfectly twinned datasets.

5 Model quality i

5.1 Standard geometry i

Bond lengths and bond angles in the following residue types are not validated in this section: SO4, GDL

The Z score for a bond length (or angle) is the number of standard deviations the observed value is removed from the expected value. A bond length (or angle) with $|Z| > 5$ is considered an outlier worth inspection. RMSZ is the root-mean-square of all Z scores of the bond lengths (or angles).

Mol	Chain	Bond lengths		Bond angles	
		RMSZ	# Z >5	RMSZ	# Z >5
1	A	1.17	0/785	0.99	1/1065 (0.1%)
1	B	1.25	2/748 (0.3%)	1.11	1/1014 (0.1%)
1	C	1.35	1/716 (0.1%)	1.27	3/971 (0.3%)
1	D	1.19	1/769 (0.1%)	1.01	1/1043 (0.1%)
1	E	1.22	2/786 (0.3%)	1.15	3/1066 (0.3%)
1	F	1.26	4/777 (0.5%)	1.01	0/1054
1	G	1.20	0/748	1.08	2/1014 (0.2%)
1	H	1.24	2/716 (0.3%)	1.34	9/971 (0.9%)
1	I	1.20	1/791 (0.1%)	1.10	0/1073
1	J	1.19	2/786 (0.3%)	1.10	2/1066 (0.2%)
All	All	1.23	15/7622 (0.2%)	1.12	22/10337 (0.2%)

Chiral center outliers are detected by calculating the chiral volume of a chiral center and verifying if the center is modelled as a planar moiety or with the opposite hand. A planarity outlier is detected by checking planarity of atoms in a peptide group, atoms in a mainchain group or atoms of a sidechain that are expected to be planar.

Mol	Chain	#Chirality outliers	#Planarity outliers
1	C	0	2
1	G	0	1
1	H	0	2
1	I	0	1
All	All	0	6

All (15) bond length outliers are listed below:

Mol	Chain	Res	Type	Atoms	Z	Observed(Å)	Ideal(Å)
1	C	35	ASP	CB-CG	-7.64	1.35	1.51
1	H	35	ASP	CB-CG	-7.43	1.36	1.51
1	F	93	GLN	CB-CG	6.76	1.70	1.52
1	F	34	PHE	CE2-CZ	6.70	1.50	1.37

Continued on next page...

Continued from previous page...

Mol	Chain	Res	Type	Atoms	Z	Observed(Å)	Ideal(Å)
1	D	78	PHE	CE1-CZ	6.33	1.49	1.37
1	B	86	TYR	CE2-CZ	6.11	1.46	1.38
1	F	93	GLN	CG-CD	6.07	1.65	1.51
1	J	13	ASN	CB-CG	5.63	1.64	1.51
1	I	88	TYR	CD1-CE1	5.41	1.47	1.39
1	H	81	PHE	CB-CG	-5.26	1.42	1.51
1	E	31	PHE	CE1-CZ	5.19	1.47	1.37
1	F	67	GLU	CG-CD	5.11	1.59	1.51
1	B	31	PHE	CD1-CE1	5.08	1.49	1.39
1	J	88	TYR	CD1-CE1	5.07	1.47	1.39
1	E	86	TYR	CD2-CE2	5.05	1.47	1.39

All (22) bond angle outliers are listed below:

Mol	Chain	Res	Type	Atoms	Z	Observed(°)	Ideal(°)
1	H	35	ASP	CB-CG-OD1	-11.25	108.17	118.30
1	C	35	ASP	CB-CG-OD1	-11.14	108.28	118.30
1	E	35	ASP	CB-CG-OD1	7.93	125.44	118.30
1	E	102	VAL	CG1-CB-CG2	7.48	122.87	110.90
1	C	35	ASP	CB-CA-C	-7.12	96.17	110.40
1	D	27	ASP	CB-CG-OD1	-6.96	112.04	118.30
1	H	35	ASP	CB-CA-C	-6.73	96.95	110.40
1	H	64	ARG	NE-CZ-NH2	-6.62	116.99	120.30
1	C	19	LYS	CD-CE-NZ	-6.55	96.64	111.70
1	H	84	ASN	CB-CA-C	-6.23	97.94	110.40
1	J	102	VAL	CG1-CB-CG2	6.09	120.65	110.90
1	H	48	LEU	CA-CB-CG	6.08	129.28	115.30
1	H	64	ARG	NE-CZ-NH1	5.85	123.22	120.30
1	H	59	ASP	CB-CG-OD1	5.82	123.53	118.30
1	J	99	LEU	CB-CG-CD1	-5.67	101.37	111.00
1	A	92	GLY	N-CA-C	-5.59	99.13	113.10
1	G	17	ARG	NE-CZ-NH1	5.40	123.00	120.30
1	B	91	ARG	NE-CZ-NH2	-5.37	117.61	120.30
1	G	59	ASP	CB-CG-OD1	5.17	122.96	118.30
1	H	70	SER	N-CA-C	5.13	124.85	111.00
1	E	35	ASP	CB-CG-OD2	-5.09	113.72	118.30
1	H	103	SER	N-CA-C	5.04	124.61	111.00

There are no chirality outliers.

All (6) planarity outliers are listed below:

Mol	Chain	Res	Type	Group
1	C	34	PHE	Peptide
1	C	35	ASP	Mainchain
1	G	75	GLY	Peptide
1	H	34	PHE	Peptide
1	H	35	ASP	Mainchain
1	I	44	SER	Peptide

5.2 Too-close contacts [i](#)

In the following table, the Non-H and H(model) columns list the number of non-hydrogen atoms and hydrogen atoms in the chain respectively. The H(added) column lists the number of hydrogen atoms added and optimized by MolProbity. The Clashes column lists the number of clashes within the asymmetric unit, whereas Symm-Clashes lists symmetry-related clashes.

Mol	Chain	Non-H	H(model)	H(added)	Clashes	Symm-Clashes
1	A	756	0	695	26	0
1	B	719	0	667	23	0
1	C	689	0	640	29	0
1	D	740	0	687	12	0
1	E	757	0	701	17	0
1	F	748	0	691	28	0
1	G	719	0	667	20	0
1	H	689	0	640	34	0
1	I	762	0	700	21	0
1	J	757	0	701	20	0
2	A	15	0	8	1	0
2	B	15	0	8	1	0
2	D	30	0	16	4	0
2	E	15	0	8	1	0
2	F	15	0	8	1	0
2	G	15	0	8	0	0
2	I	15	0	8	1	0
2	J	15	0	8	9	0
3	E	5	0	0	0	0
3	J	5	0	0	0	0
4	A	2	0	0	0	0
4	B	3	0	0	0	0
4	C	2	0	0	0	0
4	D	7	0	0	0	0
4	E	3	0	0	0	0
4	F	3	0	0	0	0
4	G	6	0	0	1	0
4	H	3	0	0	0	0

Continued on next page...

Continued from previous page...

Mol	Chain	Non-H	H(model)	H(added)	Clashes	Symm-Clashes
4	I	5	0	0	0	0
4	J	15	0	0	1	0
All	All	7530	0	6861	203	0

The all-atom clashscore is defined as the number of clashes found per 1000 atoms (including hydrogen atoms). The all-atom clashscore for this structure is 14.

All (203) close contacts within the same asymmetric unit are listed below, sorted by their clash magnitude.

Atom-1	Atom-2	Interatomic distance (Å)	Clash overlap (Å)
1:A:23:ASN:O	1:A:23:ASN:ND2	1.85	1.10
1:H:82:HIS:CD2	1:H:84:ASN:H	1.79	0.99
1:C:82:HIS:CD2	1:C:84:ASN:H	1.81	0.99
1:I:30:GLN:HE22	1:I:74:SER:CB	1.79	0.95
1:H:25:GLY:O	1:H:28:GLN:HG3	1.66	0.94
1:G:91:ARG:HG2	1:G:91:ARG:HH11	1.29	0.94
1:I:30:GLN:HE22	1:I:74:SER:HB2	1.33	0.94
2:J:110:GDL:O7	2:J:110:GDL:H3	1.63	0.94
1:H:71:GLY:O	1:I:11:SER:HB3	1.68	0.94
1:D:30:GLN:HE22	1:D:74:SER:HB2	1.34	0.92
1:A:46:ASP:OD2	1:A:72:GLY:N	2.02	0.91
1:C:82:HIS:HD2	1:C:84:ASN:N	1.71	0.87
1:H:82:HIS:HD2	1:H:84:ASN:N	1.72	0.86
1:G:27:ASP:O	1:G:28:GLN:HB2	1.75	0.85
1:E:23:ASN:OD1	1:E:24:GLY:N	2.09	0.85
1:F:23:ASN:O	1:F:23:ASN:ND2	2.10	0.85
1:C:82:HIS:HD2	1:C:84:ASN:H	0.88	0.83
1:C:92:GLY:O	1:D:27:ASP:OD1	1.97	0.83
1:H:82:HIS:HD2	1:H:84:ASN:H	0.88	0.82
1:A:97:LYS:O	1:A:97:LYS:HG3	1.81	0.81
1:B:68:ILE:HG22	1:B:101:PRO:HG2	1.65	0.79
1:H:35:ASP:HB3	1:H:37:ASN:H	1.48	0.78
1:C:35:ASP:HB2	1:C:39:TYR:H	1.52	0.75
1:H:92:GLY:O	1:H:93:GLN:HB2	1.87	0.75
1:H:25:GLY:O	1:H:28:GLN:CG	2.35	0.74
1:D:30:GLN:HE22	1:D:74:SER:CB	1.99	0.74
1:C:35:ASP:HB3	1:C:37:ASN:H	1.52	0.73
1:C:56:SER:HB2	1:E:105:GLN:HG2	1.69	0.73
1:H:79:LEU:HD22	1:H:87:LEU:HD11	1.69	0.73
1:A:26:TRP:HE1	2:A:110:GDL:HC	1.35	0.73
1:E:20:GLU:HG2	1:E:57:ASP:OD1	1.89	0.72

Continued on next page...

Continued from previous page...

Atom-1	Atom-2	Interatomic distance (Å)	Clash overlap (Å)
1:J:62:ILE:H	2:J:110:GDL:H6C2	1.54	0.71
1:F:91:ARG:HH11	1:G:15:MET:HE3	1.57	0.69
1:G:91:ARG:HG2	1:G:91:ARG:NH1	2.04	0.69
1:B:50:LYS:HD3	1:B:68:ILE:HD11	1.74	0.69
1:C:94:ARG:HG3	1:C:96:TYR:OH	1.94	0.69
1:C:56:SER:CB	1:E:105:GLN:HG2	2.23	0.68
1:D:57:ASP:O	2:D:238:GDL:H6C2	1.93	0.68
1:A:50:LYS:HB2	1:A:68:ILE:HD11	1.76	0.68
1:C:79:LEU:HD22	1:C:87:LEU:HD11	1.75	0.67
1:C:82:HIS:CD2	1:C:84:ASN:CG	2.68	0.67
1:E:23:ASN:OD1	1:E:23:ASN:C	2.32	0.67
1:F:75:GLY:HA3	1:F:91:ARG:HH21	1.60	0.66
1:J:23:ASN:O	1:J:23:ASN:OD1	2.12	0.66
1:B:92:GLY:O	1:C:27:ASP:HB3	1.96	0.66
1:F:51:ALA:HB2	1:F:65:ALA:HA	1.77	0.66
1:A:23:ASN:O	1:A:23:ASN:CG	2.35	0.65
1:B:51:ALA:HB2	1:B:65:ALA:HA	1.79	0.65
1:D:57:ASP:O	2:D:238:GDL:C6	2.45	0.65
1:I:30:GLN:HE22	1:I:74:SER:HB3	1.59	0.65
1:F:18:ALA:HA	1:H:51:ALA:HB2	1.79	0.65
1:A:68:ILE:CG2	1:A:102:VAL:HA	2.26	0.65
1:F:29:PHE:CD1	1:F:42:ALA:HB1	2.32	0.64
1:B:75:GLY:HA3	1:B:91:ARG:NH2	2.13	0.63
1:I:30:GLN:NE2	1:I:74:SER:CB	2.59	0.63
1:B:50:LYS:CB	1:B:68:ILE:HD12	2.29	0.63
1:J:61:TRP:HB3	2:J:110:GDL:H6C1	1.81	0.62
1:G:91:ARG:HH11	1:G:91:ARG:CG	2.10	0.61
1:C:35:ASP:HB3	1:C:37:ASN:N	2.15	0.61
1:A:93:GLN:O	1:B:23:ASN:O	2.18	0.61
1:A:29:PHE:CD1	1:A:42:ALA:HB1	2.35	0.61
1:B:50:LYS:CD	1:B:68:ILE:HD11	2.31	0.61
1:F:91:ARG:HH11	1:G:15:MET:CE	2.13	0.61
1:B:50:LYS:HB2	1:B:68:ILE:HD12	1.82	0.60
1:B:62:ILE:HG22	2:B:110:GDL:O7	2.02	0.60
1:A:50:LYS:CB	1:A:68:ILE:HD11	2.32	0.60
1:F:23:ASN:O	1:F:23:ASN:CG	2.40	0.59
1:E:13:ASN:ND2	1:E:16:GLY:H	2.02	0.58
1:A:68:ILE:HG22	1:A:102:VAL:CA	2.34	0.57
1:C:35:ASP:HB2	1:C:39:TYR:N	2.19	0.57
1:G:51:ALA:HB2	1:G:65:ALA:HA	1.87	0.57
1:F:21:ILE:CD1	1:H:48:LEU:HD13	2.35	0.56

Continued on next page...

Continued from previous page...

Atom-1	Atom-2	Interatomic distance (Å)	Clash overlap (Å)
1:A:13:ASN:H	1:A:13:ASN:HD22	1.53	0.56
1:B:50:LYS:HB3	1:B:68:ILE:CD1	2.34	0.56
1:J:80:PHE:N	1:J:80:PHE:CD1	2.74	0.56
1:F:54:PRO:HD3	1:F:61:TRP:CD1	2.41	0.56
1:G:86:TYR:CE2	4:J:120:HOH:O	2.53	0.55
1:H:60:ASN:ND2	1:H:63:ALA:HB2	2.22	0.55
1:F:26:TRP:HE1	2:F:110:GDL:HC	1.55	0.54
1:C:56:SER:OG	1:E:105:GLN:HG2	2.07	0.54
1:J:62:ILE:HG13	1:J:62:ILE:O	2.06	0.54
1:H:29:PHE:CD2	1:H:44:SER:HB2	2.43	0.54
1:G:30:GLN:HE22	1:G:74:SER:HB2	1.72	0.54
1:H:35:ASP:HB3	1:H:37:ASN:N	2.21	0.54
1:I:46:ASP:CG	1:I:72:GLY:H	2.11	0.54
1:H:35:ASP:HB2	1:H:39:TYR:H	1.73	0.54
1:F:13:ASN:HD22	1:F:13:ASN:H	1.56	0.53
1:G:29:PHE:CD1	1:G:44:SER:HB3	2.43	0.53
1:I:30:GLN:NE2	1:I:74:SER:HB2	2.15	0.53
1:G:82:HIS:CG	1:G:83:PRO:HD2	2.43	0.53
1:F:93:GLN:CD	1:F:93:GLN:H	2.13	0.53
1:A:68:ILE:HG22	1:A:102:VAL:HA	1.90	0.52
1:F:101:PRO:HA	1:G:17:ARG:HH21	1.73	0.52
1:H:60:ASN:HD21	1:H:63:ALA:HB2	1.74	0.52
1:H:79:LEU:HD23	1:H:89:ALA:HB2	1.90	0.52
1:I:25:GLY:O	1:I:28:GLN:HG2	2.09	0.52
1:J:25:GLY:O	1:J:28:GLN:HG2	2.10	0.52
1:I:72:GLY:O	1:I:91:ARG:NH2	2.42	0.52
1:H:102:VAL:O	1:H:103:SER:CB	2.58	0.51
1:A:23:ASN:ND2	1:A:23:ASN:C	2.61	0.51
1:D:97:LYS:O	1:D:98:ALA:HB2	2.10	0.51
1:I:30:GLN:NE2	1:I:74:SER:HB3	2.25	0.51
1:I:43:VAL:HA	1:I:47:LYS:O	2.11	0.51
1:J:104:ASN:HD22	1:J:105:GLN:N	2.08	0.51
1:F:33:PHE:CD1	1:F:33:PHE:N	2.79	0.51
1:C:23:ASN:C	1:C:23:ASN:HD22	2.14	0.51
1:F:97:LYS:HG3	1:F:97:LYS:O	2.09	0.50
1:C:57:ASP:O	1:E:105:GLN:HG3	2.12	0.50
1:I:84:ASN:OD1	1:I:84:ASN:C	2.50	0.50
1:C:29:PHE:CD2	1:C:44:SER:HB2	2.47	0.49
1:C:56:SER:HB2	1:E:105:GLN:CG	2.40	0.49
1:B:37:ASN:ND2	1:E:86:TYR:OH	2.44	0.49
1:D:51:ALA:HB2	1:D:65:ALA:HA	1.95	0.49

Continued on next page...

Continued from previous page...

Atom-1	Atom-2	Interatomic distance (Å)	Clash overlap (Å)
1:B:46:ASP:OD1	1:B:74:SER:HB2	2.13	0.49
1:A:41:TYR:CD1	1:A:41:TYR:N	2.80	0.49
1:D:44:SER:O	1:D:45:ASN:C	2.50	0.49
1:H:80:PHE:HE2	1:I:34:PHE:CE2	2.30	0.49
1:J:23:ASN:N	2:J:110:GDL:O3	2.45	0.49
1:F:21:ILE:HD11	1:H:48:LEU:HD13	1.95	0.49
1:B:50:LYS:CD	1:B:68:ILE:CD1	2.91	0.49
1:C:94:ARG:HG3	1:C:96:TYR:CZ	2.48	0.49
1:C:26:TRP:CE3	1:C:29:PHE:HE1	2.32	0.48
1:F:101:PRO:HA	1:G:17:ARG:NH2	2.28	0.48
1:A:23:ASN:C	1:A:23:ASN:HD22	2.16	0.48
1:B:50:LYS:CB	1:B:68:ILE:CD1	2.90	0.48
1:F:84:ASN:C	1:F:84:ASN:OD1	2.52	0.48
1:B:50:LYS:HD2	1:B:68:ILE:CD1	2.44	0.47
1:F:11:SER:HB3	1:H:24:GLY:O	2.14	0.47
1:I:96:TYR:CE2	1:J:20:GLU:HG3	2.48	0.47
1:J:46:ASP:CG	1:J:72:GLY:H	2.17	0.47
1:F:11:SER:CB	1:H:24:GLY:O	2.62	0.47
2:J:110:GDL:O7	2:J:110:GDL:C3	2.44	0.47
1:G:94:ARG:HG2	1:H:23:ASN:HD22	1.80	0.46
1:J:45:ASN:O	1:J:46:ASP:CB	2.63	0.46
1:B:75:GLY:CA	1:B:91:ARG:NH2	2.78	0.46
1:G:86:TYR:N	1:G:86:TYR:CD2	2.83	0.46
1:H:80:PHE:CE2	1:I:34:PHE:CE2	3.04	0.46
1:G:75:GLY:HA3	1:G:91:ARG:HE	1.82	0.45
1:I:33:PHE:N	1:I:33:PHE:CD1	2.84	0.45
1:D:72:GLY:O	1:D:91:ARG:NH2	2.49	0.45
1:F:25:GLY:O	1:F:28:GLN:NE2	2.50	0.45
1:A:94:ARG:NH2	1:B:23:ASN:HD21	2.14	0.45
1:H:94:ARG:H	1:H:94:ARG:HG2	1.73	0.45
1:E:60:ASN:OD1	1:E:60:ASN:C	2.54	0.44
1:H:43:VAL:HA	1:H:47:LYS:O	2.17	0.44
1:E:79:LEU:HD12	1:E:79:LEU:HA	1.81	0.44
1:A:82:HIS:ND1	1:A:83:PRO:HD2	2.33	0.44
1:H:19:LYS:HB2	1:H:19:LYS:HE3	1.83	0.44
1:B:68:ILE:HG22	1:B:68:ILE:O	2.18	0.44
1:H:92:GLY:O	1:H:93:GLN:CB	2.57	0.44
1:A:41:TYR:HA	1:A:49:TYR:O	2.17	0.44
1:B:82:HIS:HB2	1:B:88:TYR:CE1	2.53	0.44
1:E:57:ASP:O	2:E:110:GDL:H6C1	2.17	0.43
1:G:16:GLY:N	4:G:107:HOH:O	2.40	0.43

Continued on next page...

Continued from previous page...

Atom-1	Atom-2	Interatomic distance (Å)	Clash overlap (Å)
1:A:33:PHE:N	1:A:33:PHE:CD1	2.85	0.43
1:B:59:ASP:CG	1:B:64:ARG:HE	2.21	0.43
1:C:59:ASP:O	1:C:60:ASN:C	2.57	0.43
1:A:72:GLY:O	1:A:91:ARG:NH2	2.51	0.43
1:B:50:LYS:HB3	1:B:68:ILE:HD11	2.00	0.43
1:J:43:VAL:HA	1:J:47:LYS:O	2.19	0.43
1:I:23:ASN:HB2	2:I:110:GDL:O4	2.18	0.43
1:A:29:PHE:CE1	1:A:42:ALA:HB1	2.53	0.43
1:A:54:PRO:HD3	1:A:61:TRP:CD1	2.54	0.42
1:F:41:TYR:N	1:F:41:TYR:CD1	2.86	0.42
1:G:48:LEU:HD22	1:G:73:TRP:CZ3	2.54	0.42
1:J:35:ASP:C	1:J:35:ASP:OD1	2.57	0.42
1:H:33:PHE:CD1	1:H:33:PHE:N	2.88	0.42
1:H:82:HIS:CD2	1:H:83:PRO:HD2	2.54	0.42
1:E:69:GLY:HA3	1:E:73:TRP:NE1	2.35	0.42
1:C:29:PHE:HD2	1:C:44:SER:HB2	1.84	0.42
1:C:91:ARG:O	1:C:94:ARG:HG2	2.20	0.42
1:J:104:ASN:HD22	1:J:104:ASN:C	2.22	0.42
1:A:76:PHE:CD1	1:A:89:ALA:HB1	2.54	0.42
1:F:13:ASN:HD22	1:F:13:ASN:N	2.17	0.42
1:J:61:TRP:H	2:J:110:GDL:H5	1.85	0.42
1:A:43:VAL:HA	1:A:47:LYS:O	2.20	0.42
1:C:93:GLN:HA	1:D:27:ASP:OD1	2.20	0.42
1:I:98:ALA:HB2	1:J:18:ALA:HA	2.02	0.42
1:C:19:LYS:HG2	1:C:20:GLU:N	2.35	0.41
1:D:24:GLY:H	2:D:238:GDL:H3	1.84	0.41
1:E:13:ASN:HD22	1:E:16:GLY:H	1.65	0.41
1:B:68:ILE:CG2	1:B:101:PRO:HG2	2.44	0.41
1:E:82:HIS:HB2	1:E:88:TYR:CE1	2.55	0.41
1:F:25:GLY:H	1:H:46:ASP:CG	2.24	0.41
1:J:26:TRP:CZ2	2:J:110:GDL:H6C1	2.55	0.41
1:C:23:ASN:C	1:C:23:ASN:ND2	2.74	0.41
1:D:57:ASP:O	2:D:238:GDL:H6C1	2.17	0.41
1:J:57:ASP:O	2:J:110:GDL:O7	2.38	0.41
1:F:35:ASP:HB2	1:F:36:PRO:CD	2.51	0.41
1:G:15:MET:HE2	1:G:15:MET:HB2	1.82	0.41
1:A:10:ASP:HB3	1:A:13:ASN:ND2	2.35	0.41
1:F:76:PHE:CD1	1:F:89:ALA:HB1	2.55	0.41
1:I:29:PHE:CD1	1:I:42:ALA:HB1	2.56	0.41
1:C:82:HIS:CD2	1:C:84:ASN:ND2	2.89	0.41
1:C:83:PRO:HA	1:E:83:PRO:HG3	2.03	0.41

Continued on next page...

Continued from previous page...

Atom-1	Atom-2	Interatomic distance (Å)	Clash overlap (Å)
1:I:45:ASN:HB3	1:I:46:ASP:H	1.68	0.41
1:J:23:ASN:O	1:J:23:ASN:CG	2.59	0.41
1:H:21:ILE:HG22	1:H:55:GLN:HB2	2.03	0.41
1:H:98:ALA:HB2	1:I:18:ALA:HA	2.04	0.40
1:H:82:HIS:CD2	1:H:84:ASN:CG	2.94	0.40
1:J:62:ILE:N	2:J:110:GDL:H6C2	2.29	0.40
1:F:19:LYS:HG3	1:F:21:ILE:HG23	2.03	0.40
1:G:23:ASN:HB2	1:G:57:ASP:OD1	2.21	0.40

There are no symmetry-related clashes.

5.3 Torsion angles [i](#)

5.3.1 Protein backbone [i](#)

In the following table, the Percentiles column shows the percent Ramachandran outliers of the chain as a percentile score with respect to all X-ray entries followed by that with respect to entries of similar resolution.

The Analysed column shows the number of residues for which the backbone conformation was analysed, and the total number of residues.

Mol	Chain	Analysed	Favoured	Allowed	Outliers	Percentiles	
1	A	91/106 (86%)	88 (97%)	2 (2%)	1 (1%)	14	26
1	B	86/106 (81%)	80 (93%)	6 (7%)	0	100	100
1	C	83/106 (78%)	78 (94%)	5 (6%)	0	100	100
1	D	89/106 (84%)	83 (93%)	6 (7%)	0	100	100
1	E	91/106 (86%)	86 (94%)	4 (4%)	1 (1%)	14	26
1	F	90/106 (85%)	87 (97%)	3 (3%)	0	100	100
1	G	86/106 (81%)	82 (95%)	3 (4%)	1 (1%)	13	24
1	H	83/106 (78%)	75 (90%)	7 (8%)	1 (1%)	13	24
1	I	92/106 (87%)	88 (96%)	3 (3%)	1 (1%)	14	26
1	J	91/106 (86%)	87 (96%)	3 (3%)	1 (1%)	14	26
All	All	882/1060 (83%)	834 (95%)	42 (5%)	6 (1%)	22	39

All (6) Ramachandran outliers are listed below:

Mol	Chain	Res	Type
1	H	92	GLY
1	I	45	ASN
1	J	60	ASN
1	A	51	ALA
1	E	60	ASN
1	G	16	GLY

5.3.2 Protein sidechains [i](#)

In the following table, the Percentiles column shows the percent sidechain outliers of the chain as a percentile score with respect to all X-ray entries followed by that with respect to entries of similar resolution.

The Analysed column shows the number of residues for which the sidechain conformation was analysed, and the total number of residues.

Mol	Chain	Analysed	Rotameric	Outliers	Percentiles
1	A	75/87 (86%)	66 (88%)	9 (12%)	5 9
1	B	70/87 (80%)	65 (93%)	5 (7%)	14 28
1	C	68/87 (78%)	60 (88%)	8 (12%)	5 10
1	D	73/87 (84%)	68 (93%)	5 (7%)	16 30
1	E	75/87 (86%)	71 (95%)	4 (5%)	22 43
1	F	74/87 (85%)	65 (88%)	9 (12%)	5 9
1	G	70/87 (80%)	66 (94%)	4 (6%)	20 39
1	H	68/87 (78%)	61 (90%)	7 (10%)	7 14
1	I	76/87 (87%)	68 (90%)	8 (10%)	7 13
1	J	75/87 (86%)	67 (89%)	8 (11%)	6 13
All	All	724/870 (83%)	657 (91%)	67 (9%)	9 17

All (67) residues with a non-rotameric sidechain are listed below:

Mol	Chain	Res	Type
1	A	13	ASN
1	A	17	ARG
1	A	28	GLN
1	A	30	GLN
1	A	68	ILE
1	A	70	SER
1	A	93	GLN
1	A	95	PHE

Continued on next page...

Continued from previous page...

Mol	Chain	Res	Type
1	A	97	LYS
1	B	19	LYS
1	B	44	SER
1	B	57	ASP
1	B	91	ARG
1	B	97	LYS
1	C	20	GLU
1	C	23	ASN
1	C	64	ARG
1	C	79	LEU
1	C	94	ARG
1	C	97	LYS
1	C	102	VAL
1	C	103	SER
1	D	27	ASP
1	D	28	GLN
1	D	57	ASP
1	D	62	ILE
1	D	95	PHE
1	E	13	ASN
1	E	55	GLN
1	E	102	VAL
1	E	105	GLN
1	F	12	ASP
1	F	13	ASN
1	F	17	ARG
1	F	28	GLN
1	F	62	ILE
1	F	64	ARG
1	F	93	GLN
1	F	95	PHE
1	F	97	LYS
1	G	55	GLN
1	G	58	THR
1	G	91	ARG
1	G	97	LYS
1	H	23	ASN
1	H	28	GLN
1	H	48	LEU
1	H	62	ILE
1	H	64	ARG
1	H	79	LEU

Continued on next page...

Continued from previous page...

Mol	Chain	Res	Type
1	H	103	SER
1	I	11	SER
1	I	23	ASN
1	I	28	GLN
1	I	52	SER
1	I	55	GLN
1	I	57	ASP
1	I	80	PHE
1	I	103	SER
1	J	13	ASN
1	J	55	GLN
1	J	62	ILE
1	J	77	LYS
1	J	95	PHE
1	J	97	LYS
1	J	102	VAL
1	J	104	ASN

Sometimes sidechains can be flipped to improve hydrogen bonding and reduce clashes. All (26) such sidechains are listed below:

Mol	Chain	Res	Type
1	A	13	ASN
1	A	23	ASN
1	B	23	ASN
1	B	28	GLN
1	B	37	ASN
1	C	23	ASN
1	C	82	HIS
1	D	23	ASN
1	D	30	GLN
1	E	13	ASN
1	E	30	GLN
1	E	37	ASN
1	E	105	GLN
1	F	13	ASN
1	F	23	ASN
1	F	28	GLN
1	F	37	ASN
1	G	28	GLN
1	G	30	GLN
1	G	37	ASN
1	H	23	ASN

Continued on next page...

Continued from previous page...

Mol	Chain	Res	Type
1	H	60	ASN
1	H	82	HIS
1	I	30	GLN
1	J	30	GLN
1	J	104	ASN

5.3.3 RNA [i](#)

There are no RNA molecules in this entry.

5.4 Non-standard residues in protein, DNA, RNA chains [i](#)

There are no non-standard protein/DNA/RNA residues in this entry.

5.5 Carbohydrates [i](#)

There are no monosaccharides in this entry.

5.6 Ligand geometry [i](#)

11 ligands are modelled in this entry.

In the following table, the Counts columns list the number of bonds (or angles) for which Mogul statistics could be retrieved, the number of bonds (or angles) that are observed in the model and the number of bonds (or angles) that are defined in the Chemical Component Dictionary. The Link column lists molecule types, if any, to which the group is linked. The Z score for a bond length (or angle) is the number of standard deviations the observed value is removed from the expected value. A bond length (or angle) with $|Z| > 2$ is considered an outlier worth inspection. RMSZ is the root-mean-square of all Z scores of the bond lengths (or angles).

Mol	Type	Chain	Res	Link	Bond lengths			Bond angles		
					Counts	RMSZ	# $ Z > 2$	Counts	RMSZ	# $ Z > 2$
3	SO4	E	107	-	4,4,4	0.21	0	6,6,6	0.26	0
2	GDL	E	110	-	15,15,15	1.62	1 (6%)	17,21,21	2.70	5 (29%)
2	GDL	D	238	-	15,15,15	1.99	1 (6%)	17,21,21	2.74	8 (47%)
2	GDL	D	241	-	15,15,15	2.45	3 (20%)	17,21,21	3.34	6 (35%)
2	GDL	G	110	-	15,15,15	2.86	3 (20%)	17,21,21	2.57	7 (41%)
2	GDL	F	110	-	15,15,15	1.77	1 (6%)	17,21,21	1.68	3 (17%)
2	GDL	I	110	-	15,15,15	1.88	1 (6%)	17,21,21	1.63	3 (17%)

Mol	Type	Chain	Res	Link	Bond lengths			Bond angles		
					Counts	RMSZ	# Z > 2	Counts	RMSZ	# Z > 2
3	SO4	J	107	-	4,4,4	0.22	0	6,6,6	0.51	0
2	GDL	J	110	-	15,15,15	2.69	5 (33%)	17,21,21	4.52	11 (64%)
2	GDL	A	110	-	15,15,15	1.81	1 (6%)	17,21,21	1.92	6 (35%)
2	GDL	B	110	-	15,15,15	2.75	2 (13%)	17,21,21	2.60	6 (35%)

In the following table, the Chirals column lists the number of chiral outliers, the number of chiral centers analysed, the number of these observed in the model and the number defined in the Chemical Component Dictionary. Similar counts are reported in the Torsion and Rings columns. '-' means no outliers of that kind were identified.

Mol	Type	Chain	Res	Link	Chirals	Torsions	Rings
2	GDL	E	110	-	-	2/6/26/26	0/1/1/1
2	GDL	D	238	-	-	1/6/26/26	0/1/1/1
2	GDL	D	241	-	-	2/6/26/26	0/1/1/1
2	GDL	G	110	-	-	1/6/26/26	0/1/1/1
2	GDL	F	110	-	-	2/6/26/26	0/1/1/1
2	GDL	I	110	-	-	1/6/26/26	0/1/1/1
2	GDL	J	110	-	-	3/6/26/26	0/1/1/1
2	GDL	A	110	-	-	2/6/26/26	0/1/1/1
2	GDL	B	110	-	-	2/6/26/26	0/1/1/1

All (18) bond length outliers are listed below:

Mol	Chain	Res	Type	Atoms	Z	Observed(Å)	Ideal(Å)
2	B	110	GDL	O5-C1	9.71	1.49	1.34
2	G	110	GDL	O5-C1	9.34	1.48	1.34
2	D	241	GDL	O5-C1	8.26	1.47	1.34
2	D	238	GDL	O5-C1	7.02	1.45	1.34
2	J	110	GDL	O5-C1	6.68	1.44	1.34
2	I	110	GDL	O5-C1	6.56	1.44	1.34
2	A	110	GDL	O5-C1	6.52	1.44	1.34
2	F	110	GDL	O5-C1	6.35	1.44	1.34
2	E	110	GDL	O5-C1	5.53	1.43	1.34
2	J	110	GDL	C2-C1	-4.89	1.44	1.51
2	J	110	GDL	O5-C5	-4.31	1.40	1.46
2	G	110	GDL	C2-C1	3.72	1.57	1.51
2	J	110	GDL	O4-C4	3.21	1.50	1.43
2	J	110	GDL	C4-C5	2.40	1.58	1.53
2	D	241	GDL	C4-C3	2.33	1.58	1.52
2	B	110	GDL	C2-C1	2.24	1.54	1.51

Continued on next page...

Continued from previous page...

Mol	Chain	Res	Type	Atoms	Z	Observed(Å)	Ideal(Å)
2	D	241	GDL	C3-C2	-2.17	1.49	1.52
2	G	110	GDL	O7-C7	2.09	1.28	1.23

All (55) bond angle outliers are listed below:

Mol	Chain	Res	Type	Atoms	Z	Observed(°)	Ideal(°)
2	J	110	GDL	C1-C2-N2	-10.20	94.24	109.28
2	D	241	GDL	C1-C2-N2	7.67	120.60	109.28
2	E	110	GDL	C3-C2-N2	-7.31	100.82	112.28
2	J	110	GDL	O3-C3-C4	-7.13	93.87	110.35
2	D	241	GDL	C3-C2-N2	-6.66	101.84	112.28
2	D	241	GDL	O3-C3-C2	-6.46	95.60	109.01
2	G	110	GDL	C1-C2-N2	6.15	118.36	109.28
2	B	110	GDL	C1-C2-N2	5.86	117.92	109.28
2	J	110	GDL	O4-C4-C5	5.82	123.74	109.30
2	B	110	GDL	C3-C2-N2	-5.62	103.47	112.28
2	J	110	GDL	C6-C5-C4	5.59	126.10	113.00
2	J	110	GDL	O5-C1-O1	5.40	126.35	118.47
2	A	110	GDL	C3-C2-N2	-5.10	104.29	112.28
2	D	238	GDL	C1-C2-N2	4.89	116.49	109.28
2	E	110	GDL	C5-O5-C1	-4.82	104.58	119.63
2	D	238	GDL	C3-C2-N2	-4.77	104.81	112.28
2	J	110	GDL	O7-C7-C8	4.68	130.75	122.06
2	J	110	GDL	C5-O5-C1	-4.53	105.46	119.63
2	J	110	GDL	O5-C5-C4	-4.50	101.73	109.73
2	E	110	GDL	C8-C7-N2	-4.25	108.91	116.10
2	I	110	GDL	C5-O5-C1	-4.22	106.44	119.63
2	D	238	GDL	C5-O5-C1	-4.17	106.59	119.63
2	G	110	GDL	C3-C2-N2	-4.17	105.75	112.28
2	D	238	GDL	C2-N2-C7	4.05	128.76	121.84
2	D	241	GDL	O4-C4-C5	-3.84	99.77	109.30
2	F	110	GDL	C3-C2-N2	-3.76	106.39	112.28
2	B	110	GDL	C2-N2-C7	3.72	128.19	121.84
2	D	241	GDL	C3-C4-C5	3.55	116.57	110.24
2	G	110	GDL	C5-O5-C1	-3.51	108.66	119.63
2	D	238	GDL	O5-C5-C4	3.46	115.87	109.73
2	B	110	GDL	C5-O5-C1	-3.35	109.17	119.63
2	G	110	GDL	O7-C7-N2	3.35	128.11	121.95
2	J	110	GDL	O7-C7-N2	-3.21	116.05	121.95
2	F	110	GDL	C5-O5-C1	-3.15	109.80	119.63
2	D	238	GDL	O6-C6-C5	-3.07	100.76	111.29
2	G	110	GDL	C2-N2-C7	3.04	127.04	121.84

Continued on next page...

Continued from previous page...

Mol	Chain	Res	Type	Atoms	Z	Observed(°)	Ideal(°)
2	B	110	GDL	O3-C3-C4	3.03	117.35	110.35
2	F	110	GDL	C1-C2-N2	3.02	113.73	109.28
2	D	238	GDL	C3-C4-C5	2.99	115.58	110.24
2	E	110	GDL	C2-N2-C7	2.90	126.79	121.84
2	D	241	GDL	O3-C3-C4	2.86	116.96	110.35
2	E	110	GDL	O7-C7-C8	2.60	126.88	122.06
2	G	110	GDL	C6-C5-C4	2.59	119.07	113.00
2	J	110	GDL	C3-C2-N2	2.52	116.24	112.28
2	A	110	GDL	C8-C7-N2	-2.41	112.02	116.10
2	G	110	GDL	O3-C3-C4	2.34	115.76	110.35
2	A	110	GDL	O6-C6-C5	-2.33	103.30	111.29
2	B	110	GDL	C6-C5-C4	2.30	118.38	113.00
2	A	110	GDL	O5-C5-C4	-2.25	105.73	109.73
2	A	110	GDL	O4-C4-C3	-2.25	105.14	110.35
2	A	110	GDL	C2-N2-C7	2.13	125.48	121.84
2	J	110	GDL	O4-C4-C3	-2.07	105.57	110.35
2	I	110	GDL	C3-C2-N2	-2.06	109.05	112.28
2	D	238	GDL	O7-C7-N2	2.04	125.70	121.95
2	I	110	GDL	O5-C1-O1	-2.00	115.55	118.47

There are no chirality outliers.

All (16) torsion outliers are listed below:

Mol	Chain	Res	Type	Atoms
2	B	110	GDL	C3-C2-N2-C7
2	D	238	GDL	C3-C2-N2-C7
2	G	110	GDL	C3-C2-N2-C7
2	J	110	GDL	C3-C2-N2-C7
2	F	110	GDL	O5-C5-C6-O6
2	A	110	GDL	O5-C5-C6-O6
2	E	110	GDL	O5-C5-C6-O6
2	D	241	GDL	O5-C5-C6-O6
2	F	110	GDL	C4-C5-C6-O6
2	J	110	GDL	O5-C5-C6-O6
2	E	110	GDL	C4-C5-C6-O6
2	A	110	GDL	C4-C5-C6-O6
2	D	241	GDL	C4-C5-C6-O6
2	J	110	GDL	C4-C5-C6-O6
2	B	110	GDL	O5-C5-C6-O6
2	I	110	GDL	C3-C2-N2-C7

There are no ring outliers.

7 monomers are involved in 18 short contacts:

Mol	Chain	Res	Type	Clashes	Symm-Clashes
2	E	110	GDL	1	0
2	D	238	GDL	4	0
2	F	110	GDL	1	0
2	I	110	GDL	1	0
2	J	110	GDL	9	0
2	A	110	GDL	1	0
2	B	110	GDL	1	0

5.7 Other polymers [i](#)

There are no such residues in this entry.

5.8 Polymer linkage issues [i](#)

There are no chain breaks in this entry.

6 Fit of model and data [i](#)

6.1 Protein, DNA and RNA chains [i](#)

In the following table, the column labelled '#RSRZ > 2' contains the number (and percentage) of RSRZ outliers, followed by percent RSRZ outliers for the chain as percentile scores relative to all X-ray entries and entries of similar resolution. The OWAB column contains the minimum, median, 95th percentile and maximum values of the occupancy-weighted average B-factor per residue. The column labelled 'Q < 0.9' lists the number of (and percentage) of residues with an average occupancy less than 0.9.

Mol	Chain	Analysed	<RSRZ>	#RSRZ>2	OWAB(Å ²)	Q<0.9
1	A	93/106 (87%)	0.13	2 (2%) 62 65	21, 40, 52, 56	0
1	B	88/106 (83%)	0.02	0 100 100	23, 40, 54, 63	0
1	C	85/106 (80%)	-0.12	0 100 100	20, 34, 46, 52	0
1	D	91/106 (85%)	-0.02	1 (1%) 80 82	20, 36, 50, 59	0
1	E	93/106 (87%)	-0.20	0 100 100	19, 29, 43, 53	0
1	F	92/106 (86%)	0.05	0 100 100	21, 40, 51, 56	0
1	G	88/106 (83%)	0.08	0 100 100	22, 40, 56, 65	0
1	H	85/106 (80%)	0.02	0 100 100	22, 34, 46, 52	0
1	I	94/106 (88%)	-0.04	0 100 100	18, 37, 54, 60	0
1	J	93/106 (87%)	-0.12	0 100 100	20, 29, 43, 56	0
All	All	902/1060 (85%)	-0.02	3 (0%) 94 94	18, 36, 52, 65	0

All (3) RSRZ outliers are listed below:

Mol	Chain	Res	Type	RSRZ
1	A	70	SER	2.7
1	D	102	VAL	2.1
1	A	13	ASN	2.1

6.2 Non-standard residues in protein, DNA, RNA chains [i](#)

There are no non-standard protein/DNA/RNA residues in this entry.

6.3 Carbohydrates [i](#)

There are no monosaccharides in this entry.

6.4 Ligands [i](#)

In the following table, the Atoms column lists the number of modelled atoms in the group and the number defined in the chemical component dictionary. The B-factors column lists the minimum, median, 95th percentile and maximum values of B factors of atoms in the group. The column labelled 'Q< 0.9' lists the number of atoms with occupancy less than 0.9.

Mol	Type	Chain	Res	Atoms	RSCC	RSR	B-factors(Å ²)	Q<0.9
2	GDL	D	241	15/15	0.82	0.18	37,54,60,61	0
2	GDL	B	110	15/15	0.83	0.21	32,40,49,50	0
2	GDL	D	238	15/15	0.87	0.16	46,56,59,62	0
2	GDL	J	110	15/15	0.88	0.15	46,52,55,55	0
2	GDL	G	110	15/15	0.90	0.18	35,43,52,56	0
2	GDL	I	110	15/15	0.93	0.12	46,54,57,58	0
2	GDL	A	110	15/15	0.93	0.14	35,47,50,52	0
3	SO4	E	107	5/5	0.93	0.22	92,93,93,94	0
3	SO4	J	107	5/5	0.95	0.19	79,79,81,82	0
2	GDL	F	110	15/15	0.96	0.17	42,50,53,55	0
2	GDL	E	110	15/15	0.96	0.11	20,37,40,47	0

6.5 Other polymers [i](#)

There are no such residues in this entry.