



Full wwPDB X-ray Structure Validation Report ⓘ

Sep 20, 2023 – 01:49 PM EDT

PDB ID : 5KFR
Title : Human DNA polymerase eta-DNA ternary complex with Sp-dATP-alpha-S:
reaction with 20 mM Mn²⁺ for 600s
Authors : Gao, Y.; Yang, W.
Deposited on : 2016-06-12
Resolution : 1.75 Å(reported)

This is a Full wwPDB X-ray Structure Validation Report for a publicly released PDB entry.

We welcome your comments at validation@mail.wwpdb.org

A user guide is available at

<https://www.wwpdb.org/validation/2017/XrayValidationReportHelp>

with specific help available everywhere you see the ⓘ symbol.

The types of validation reports are described at

<http://www.wwpdb.org/validation/2017/FAQs#types>.

The following versions of software and data (see [references ⓘ](#)) were used in the production of this report:

MolProbity : 4.02b-467
Mogul : 1.8.5 (274361), CSD as541be (2020)
Xtriage (Phenix) : 1.13
EDS : 2.35.1
buster-report : 1.1.7 (2018)
Percentile statistics : 20191225.v01 (using entries in the PDB archive December 25th 2019)
Refmac : 5.8.0158
CCP4 : 7.0.044 (Gargrove)
Ideal geometry (proteins) : Engh & Huber (2001)
Ideal geometry (DNA, RNA) : Parkinson et al. (1996)
Validation Pipeline (wwPDB-VP) : 2.35.1

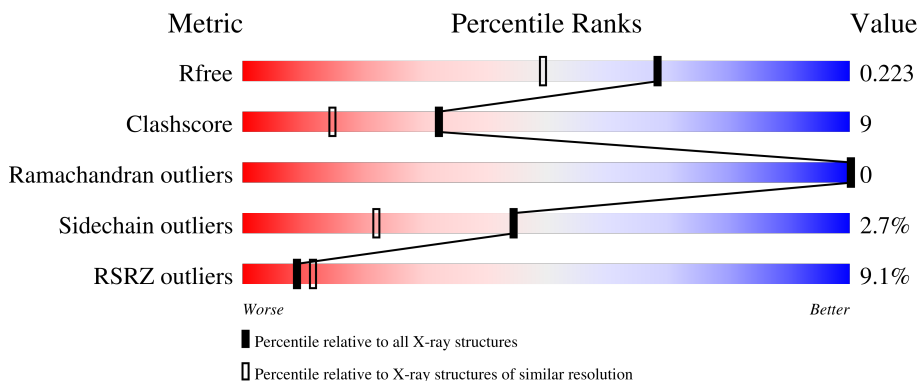
1 Overall quality at a glance

The following experimental techniques were used to determine the structure:

X-RAY DIFFRACTION

The reported resolution of this entry is 1.75 Å.

Percentile scores (ranging between 0-100) for global validation metrics of the entry are shown in the following graphic. The table shows the number of entries on which the scores are based.



Metric	Whole archive (#Entries)	Similar resolution (#Entries, resolution range(Å))
R_{free}	130704	2340 (1.76-1.76)
Clashscore	141614	2466 (1.76-1.76)
Ramachandran outliers	138981	2437 (1.76-1.76)
Sidechain outliers	138945	2437 (1.76-1.76)
RSRZ outliers	127900	2298 (1.76-1.76)

The table below summarises the geometric issues observed across the polymeric chains and their fit to the electron density. The red, orange, yellow and green segments of the lower bar indicate the fraction of residues that contain outliers for ≥ 3 , 2, 1 and 0 types of geometric quality criteria respectively. A grey segment represents the fraction of residues that are not modelled. The numeric value for each fraction is indicated below the corresponding segment, with a dot representing fractions $\leq 5\%$. The upper red bar (where present) indicates the fraction of residues that have poor fit to the electron density. The numeric value is given above the bar.

Mol	Chain	Length	Quality of chain
1	A	435	 9% 86% 10% ..
2	T	12	 17% 67% 33%
3	P	9	 78% 11% 11%

The following table lists non-polymeric compounds, carbohydrate monomers and non-standard residues in protein, DNA, RNA chains that are outliers for geometric or electron-density-fit criteria:

Mol	Type	Chain	Res	Chirality	Geometry	Clashes	Electron density
5	GOL	A	505	-	-	-	X

2 Entry composition [i](#)

There are 8 unique types of molecules in this entry. The entry contains 4416 atoms, of which 0 are hydrogens and 0 are deuteriums.

In the tables below, the ZeroOcc column contains the number of atoms modelled with zero occupancy, the AltConf column contains the number of residues with at least one atom in alternate conformation and the Trace column contains the number of residues modelled with at most 2 atoms.

- Molecule 1 is a protein called DNA polymerase eta.

Mol	Chain	Residues	Atoms					ZeroOcc	AltConf	Trace
			Total	C	N	O	S			
1	A	430	3422	2139	622	632	29	0	16	0

There are 3 discrepancies between the modelled and reference sequences:

Chain	Residue	Modelled	Actual	Comment	Reference
A	-2	GLY	-	expression tag	UNP Q9Y253
A	-1	PRO	-	expression tag	UNP Q9Y253
A	0	HIS	-	expression tag	UNP Q9Y253

- Molecule 2 is a DNA chain called DNA (5'-D(*CP*AP*TP*TP*AP*TP*GP*AP*CP*GP*CP*T)-3').

Mol	Chain	Residues	Atoms					ZeroOcc	AltConf	Trace
			Total	C	N	O	P			
2	T	12	266	128	43	82	13	0	2	1

- Molecule 3 is a DNA chain called DNA (5'-D(*AP*GP*CP*GP*TP*CP*AP*TP*(AS))-3').

Mol	Chain	Residues	Atoms						ZeroOcc	AltConf	Trace
			Total	C	N	O	P	S			
3	P	9	208	99	37	61	10	1	0	4	0

- Molecule 4 is MANGANESE (II) ION (three-letter code: MN) (formula: Mn).

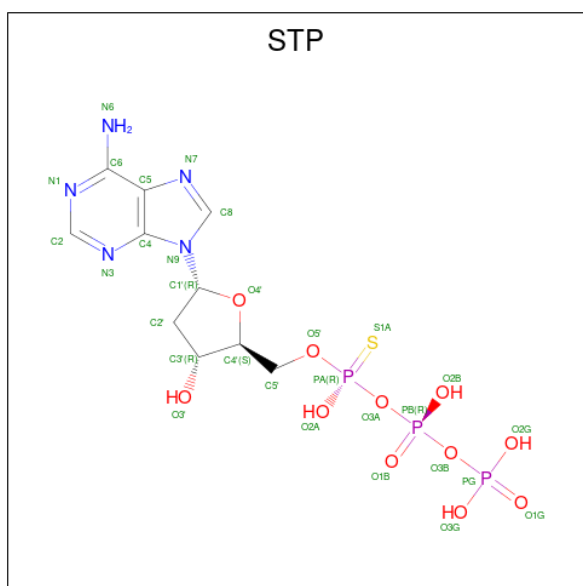
Mol	Chain	Residues	Atoms		ZeroOcc	AltConf
4	A	2	Total	Mn	0	1
			2	2		

- Molecule 5 is GLYCEROL (three-letter code: GOL) (formula: C₃H₈O₃).



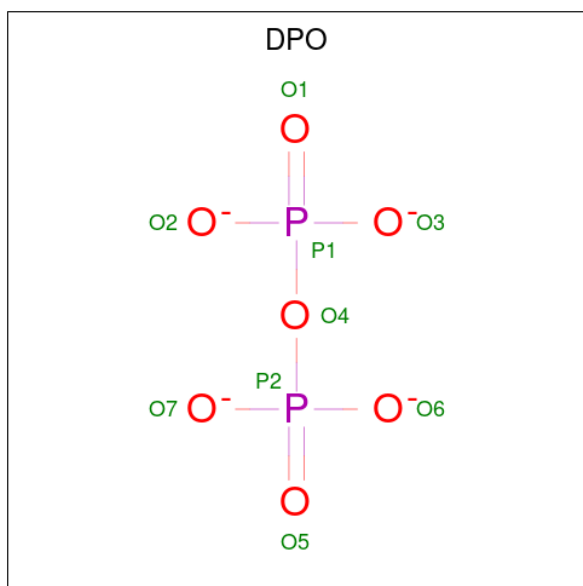
Mol	Chain	Residues	Atoms	ZeroOcc	AltConf
5	A	1	Total C O 6 3 3	0	0
5	A	1	Total C O 6 3 3	0	0
5	A	1	Total C O 6 3 3	0	0

- Molecule 6 is 2'-DEOXYADENOSINE 5'-O-(1-THIOTRIPHOSPHATE) (three-letter code: STP) (formula: $C_{10}H_{16}N_5O_{11}P_3S$).



Mol	Chain	Residues	Atoms					ZeroOcc	AltConf	
			Total	C	N	O	P			S
6	A	1	30	10	5	11	3	1	0	1

- Molecule 7 is DIPHOSPHATE (three-letter code: DPO) (formula: O_7P_2).



Mol	Chain	Residues	Atoms			ZeroOcc	AltConf
			Total	O	P		
7	A	1	9	7	2	0	1

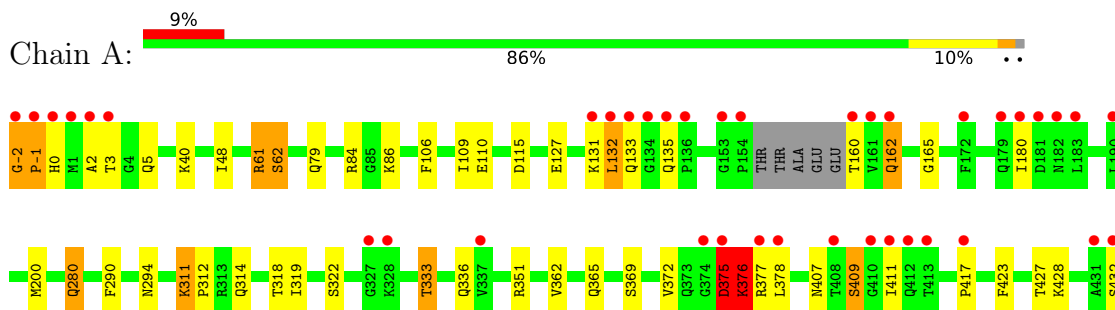
- Molecule 8 is water.

Mol	Chain	Residues	Atoms		ZeroOcc	AltConf
8	A	401	Total	O	0	1
			401	401		
8	T	37	Total	O	0	0
			37	37		
8	P	23	Total	O	0	0
			23	23		

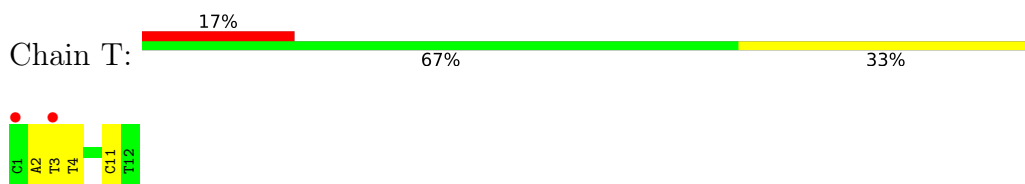
3 Residue-property plots [i](#)

These plots are drawn for all protein, RNA, DNA and oligosaccharide chains in the entry. The first graphic for a chain summarises the proportions of the various outlier classes displayed in the second graphic. The second graphic shows the sequence view annotated by issues in geometry and electron density. Residues are color-coded according to the number of geometric quality criteria for which they contain at least one outlier: green = 0, yellow = 1, orange = 2 and red = 3 or more. A red dot above a residue indicates a poor fit to the electron density ($RSRZ > 2$). Stretches of 2 or more consecutive residues without any outlier are shown as a green connector. Residues present in the sample, but not in the model, are shown in grey.

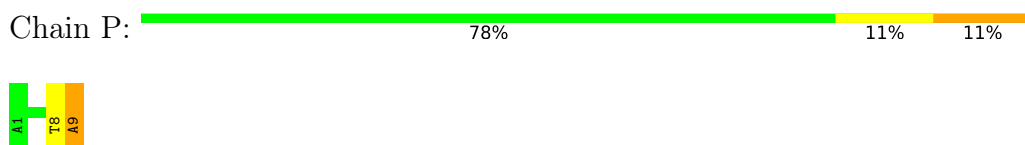
- Molecule 1: DNA polymerase eta



- Molecule 2: DNA (5'-D(*CP*AP*TP*TP*AP*TP*GP*AP*CP*GP*CP*T)-3')



- Molecule 3: DNA (5'-D(*AP*GP*CP*GP*TP*CP*AP*TP*(AS))-3')



4 Data and refinement statistics i

Property	Value	Source
Space group	P 61	Depositor
Cell constants a, b, c, α , β , γ	98.25Å 98.25Å 81.32Å 90.00° 90.00° 120.00°	Depositor
Resolution (Å)	19.77 – 1.75 19.77 – 1.75	Depositor EDS
% Data completeness (in resolution range)	99.8 (19.77-1.75) 99.8 (19.77-1.75)	Depositor EDS
R_{merge}	0.06	Depositor
R_{sym}	(Not available)	Depositor
$\langle I/\sigma(I) \rangle$ ¹	2.49 (at 1.76Å)	Xtrriage
Refinement program	PHENIX 1.9_1692	Depositor
R, R_{free}	0.175 , 0.223 0.175 , 0.223	Depositor DCC
R_{free} test set	3453 reflections (7.70%)	wwPDB-VP
Wilson B-factor (Å ²)	26.8	Xtrriage
Anisotropy	0.160	Xtrriage
Bulk solvent k_{sol} (e/Å ³), B_{sol} (Å ²)	0.33 , 48.0	EDS
L-test for twinning ²	$\langle L \rangle = 0.48$, $\langle L^2 \rangle = 0.31$	Xtrriage
Estimated twinning fraction	0.053 for h,-h-k,-l	Xtrriage
F_o, F_c correlation	0.97	EDS
Total number of atoms	4416	wwPDB-VP
Average B, all atoms (Å ²)	35.0	wwPDB-VP

Xtrriage's analysis on translational NCS is as follows: *The largest off-origin peak in the Patterson function is 3.72% of the height of the origin peak. No significant pseudotranslation is detected.*

¹Intensities estimated from amplitudes.

²Theoretical values of $\langle |L| \rangle$, $\langle L^2 \rangle$ for acentric reflections are 0.5, 0.333 respectively for untwinned datasets, and 0.375, 0.2 for perfectly twinned datasets.

5 Model quality [i](#)

5.1 Standard geometry [i](#)

Bond lengths and bond angles in the following residue types are not validated in this section: GOL, AS, DPO, STP, MN

The Z score for a bond length (or angle) is the number of standard deviations the observed value is removed from the expected value. A bond length (or angle) with $|Z| > 5$ is considered an outlier worth inspection. RMSZ is the root-mean-square of all Z scores of the bond lengths (or angles).

Mol	Chain	Bond lengths		Bond angles	
		RMSZ	$\# Z > 5$	RMSZ	$\# Z > 5$
1	A	0.58	4/3551 (0.1%)	0.62	2/4787 (0.0%)
2	T	0.80	0/296	1.03	0/456
3	P	0.79	0/247	1.01	0/378
All	All	0.61	4/4094 (0.1%)	0.69	2/5621 (0.0%)

Chiral center outliers are detected by calculating the chiral volume of a chiral center and verifying if the center is modelled as a planar moiety or with the opposite hand. A planarity outlier is detected by checking planarity of atoms in a peptide group, atoms in a mainchain group or atoms of a sidechain that are expected to be planar.

Mol	Chain	#Chirality outliers	#Planarity outliers
1	A	0	2

All (4) bond length outliers are listed below:

Mol	Chain	Res	Type	Atoms	Z	Observed(Å)	Ideal(Å)
1	A	312	PRO	N-CD	5.55	1.55	1.47
1	A	61[A]	ARG	CA-C	5.51	1.67	1.52
1	A	61[B]	ARG	CA-C	5.51	1.67	1.52
1	A	-1	PRO	N-CD	5.49	1.55	1.47

All (2) bond angle outliers are listed below:

Mol	Chain	Res	Type	Atoms	Z	Observed(°)	Ideal(°)
1	A	-2	GLY	C-N-CD	5.33	139.58	128.40
1	A	311	LYS	C-N-CD	5.20	139.32	128.40

There are no chirality outliers.

All (2) planarity outliers are listed below:

Mol	Chain	Res	Type	Group
1	A	375	ASP	Peptide
1	A	376	LYS	Peptide

5.2 Too-close contacts [i](#)

In the following table, the Non-H and H(model) columns list the number of non-hydrogen atoms and hydrogen atoms in the chain respectively. The H(added) column lists the number of hydrogen atoms added and optimized by MolProbity. The Clashes column lists the number of clashes within the asymmetric unit, whereas Symm-Clashes lists symmetry-related clashes.

Mol	Chain	Non-H	H(model)	H(added)	Clashes	Symm-Clashes
1	A	3422	0	3493	61	0
2	T	266	0	150	10	0
3	P	208	0	99	4	0
4	A	2	0	0	0	0
5	A	18	0	24	0	0
6	A	30	0	11	0	0
7	A	9	0	0	0	0
8	A	401	0	0	10	2
8	P	23	0	0	1	0
8	T	37	0	0	3	0
All	All	4416	0	3777	68	2

The all-atom clashscore is defined as the number of clashes found per 1000 atoms (including hydrogen atoms). The all-atom clashscore for this structure is 9.

All (68) close contacts within the same asymmetric unit are listed below, sorted by their clash magnitude.

Atom-1	Atom-2	Interatomic distance (Å)	Clash overlap (Å)
1:A:376:LYS:HG3	1:A:377:ARG:HG3	1.38	1.05
1:A:61[B]:ARG:NH1	8:A:601:HOH:O	1.95	1.00
1:A:376:LYS:HG3	1:A:377:ARG:CG	1.93	0.98
1:A:62:SER:HB2	2:T:3[A]:DT:C5	1.96	0.98
1:A:3:THR:OG1	1:A:5:GLN:OE1	1.86	0.92
1:A:376:LYS:HG3	1:A:377:ARG:CB	1.98	0.92
3:P:8[B]:DT:H2''	8:P:102:HOH:O	1.68	0.91
1:A:333:THR:HG22	1:A:336:GLN:H	1.42	0.84
1:A:133:GLN:HG2	1:A:135:GLN:HG3	1.57	0.84
1:A:-2:GLY:N	8:A:602:HOH:O	1.98	0.78
1:A:376:LYS:HG3	1:A:377:ARG:HB2	1.66	0.78
1:A:409:SER:OG	1:A:411:ILE:O	2.02	0.77

Continued on next page...

Continued from previous page...

Atom-1	Atom-2	Interatomic distance (Å)	Clash overlap (Å)
1:A:375:ASP:OD1	1:A:376:LYS:HB3	1.87	0.74
1:A:376:LYS:CG	1:A:377:ARG:HG3	2.15	0.74
2:T:2:DA:H4'	2:T:3[B]:DT:H5'	1.69	0.73
1:A:-1:PRO:HG2	1:A:0:HIS:CD2	2.25	0.71
2:T:11:DC:OP1	8:T:101:HOH:O	2.11	0.68
1:A:375:ASP:OD1	1:A:376:LYS:CB	2.42	0.67
1:A:61[A]:ARG:NH1	8:A:608[A]:HOH:O	2.28	0.66
1:A:62:SER:HB2	2:T:3[A]:DT:C4	2.33	0.64
1:A:132:LEU:O	1:A:133:GLN:HG2	1.98	0.64
2:T:3[B]:DT:H2'	2:T:3[B]:DT:O2	1.96	0.64
2:T:3[A]:DT:H2'	2:T:4[A]:DT:H71	1.79	0.63
1:A:62:SER:CB	2:T:3[A]:DT:C4	2.82	0.63
1:A:40:LYS:HG3	1:A:79:GLN:OE1	1.98	0.62
1:A:3:THR:N	8:A:614:HOH:O	2.32	0.62
1:A:376:LYS:CG	1:A:377:ARG:HB2	2.31	0.61
1:A:369:SER:HB3	1:A:423:PHE:HB3	1.83	0.60
1:A:-2:GLY:N	1:A:-1:PRO:HD2	2.16	0.60
1:A:2:ALA:HB1	8:A:614:HOH:O	2.01	0.60
1:A:-2:GLY:H3	1:A:-1:PRO:HD2	1.70	0.55
1:A:280[A]:GLN:NE2	8:A:620:HOH:O	2.40	0.55
1:A:106:PHE:CG	1:A:200[B]:MET:HG2	2.42	0.55
1:A:376:LYS:HG3	1:A:377:ARG:N	2.21	0.55
1:A:372:VAL:HG11	1:A:417:PRO:HG2	1.91	0.53
1:A:376:LYS:CG	1:A:377:ARG:N	2.73	0.52
1:A:378:LEU:HD21	8:T:120:HOH:O	2.10	0.52
1:A:61[B]:ARG:HG2	1:A:62:SER:N	2.24	0.52
1:A:372:VAL:CG1	1:A:417:PRO:HG2	2.40	0.52
1:A:62:SER:HB2	2:T:3[A]:DT:C7	2.39	0.51
1:A:362:VAL:HG22	1:A:432:SER:HB3	1.91	0.51
1:A:-2:GLY:N	1:A:-1:PRO:CD	2.74	0.51
1:A:319:ILE:HG23	1:A:351[B]:ARG:CZ	2.42	0.50
1:A:62:SER:O	1:A:62:SER:OG	2.28	0.49
1:A:62:SER:CB	2:T:3[A]:DT:C5	2.83	0.48
1:A:407:ASN:OD1	1:A:409:SER:HB3	2.14	0.47
1:A:372:VAL:O	1:A:375:ASP:HB2	2.15	0.46
1:A:365:GLN:HB2	1:A:428:LYS:HD2	1.97	0.46
1:A:109:ILE:HD11	1:A:314:GLN:HG3	1.97	0.45
1:A:351[B]:ARG:NH2	8:T:104:HOH:O	2.48	0.45
1:A:160:THR:OG1	1:A:162:GLN:OE1	2.34	0.45
1:A:376:LYS:CD	1:A:377:ARG:HG3	2.47	0.45
1:A:162:GLN:HG3	1:A:165:GLY:HA3	1.99	0.44

Continued on next page...

Continued from previous page...

Atom-1	Atom-2	Interatomic distance (Å)	Clash overlap (Å)
1:A:322[A]:SER:HB3	1:A:423:PHE:CD2	2.53	0.44
1:A:133:GLN:HG3	1:A:133:GLN:O	2.17	0.43
8:A:601:HOH:O	3:P:8[A]:DT:H2'	2.19	0.43
1:A:290:PHE:O	1:A:294:ASN:HB2	2.18	0.43
1:A:48:ILE:O	3:P:9[B]:AS:H2''	2.18	0.43
1:A:61[B]:ARG:CZ	3:P:9[B]:AS:HN61	2.32	0.42
1:A:318:THR:HG22	1:A:427:THR:HG22	2.02	0.41
1:A:86:LYS:HE2	8:A:693:HOH:O	2.19	0.41
1:A:180:ILE:H	1:A:180:ILE:HG13	1.60	0.41
1:A:333:THR:HG23	8:A:726:HOH:O	2.19	0.41
1:A:84:ARG:NH1	8:A:623:HOH:O	2.41	0.41
1:A:110:GLU:HB2	1:A:311:LYS:O	2.21	0.41
2:T:3[A]:DT:H2''	2:T:4[A]:DT:O5'	2.21	0.40

All (2) symmetry-related close contacts are listed below. The label for Atom-2 includes the symmetry operator and encoded unit-cell translations to be applied.

Atom-1	Atom-2	Interatomic distance (Å)	Clash overlap (Å)
8:A:752:HOH:O	8:A:910:HOH:O[5_554]	2.09	0.11
8:A:884:HOH:O	8:A:886:HOH:O[5_664]	2.14	0.06

5.3 Torsion angles [i](#)

5.3.1 Protein backbone [i](#)

In the following table, the Percentiles column shows the percent Ramachandran outliers of the chain as a percentile score with respect to all X-ray entries followed by that with respect to entries of similar resolution.

The Analysed column shows the number of residues for which the backbone conformation was analysed, and the total number of residues.

Mol	Chain	Analysed	Favoured	Allowed	Outliers	Percentiles
1	A	442/435 (102%)	434 (98%)	8 (2%)	0	100 100

There are no Ramachandran outliers to report.

5.3.2 Protein sidechains [i](#)

In the following table, the Percentiles column shows the percent sidechain outliers of the chain as a percentile score with respect to all X-ray entries followed by that with respect to entries of similar resolution.

The Analysed column shows the number of residues for which the sidechain conformation was analysed, and the total number of residues.

Mol	Chain	Analysed	Rotameric	Outliers	Percentiles
1	A	384/372 (103%)	373 (97%)	11 (3%)	42 19

All (11) residues with a non-rotameric sidechain are listed below:

Mol	Chain	Res	Type
1	A	62	SER
1	A	115	ASP
1	A	131	LYS
1	A	132	LEU
1	A	162	GLN
1	A	280[A]	GLN
1	A	280[B]	GLN
1	A	333	THR
1	A	375	ASP
1	A	376	LYS
1	A	409	SER

Sometimes sidechains can be flipped to improve hydrogen bonding and reduce clashes. All (1) such sidechains are listed below:

Mol	Chain	Res	Type
1	A	0	HIS

5.3.3 RNA [i](#)

There are no RNA molecules in this entry.

5.4 Non-standard residues in protein, DNA, RNA chains [i](#)

1 non-standard protein/DNA/RNA residue is modelled in this entry.

In the following table, the Counts columns list the number of bonds (or angles) for which Mogul statistics could be retrieved, the number of bonds (or angles) that are observed in the model and the number of bonds (or angles) that are defined in the Chemical Component Dictionary. The

Link column lists molecule types, if any, to which the group is linked. The Z score for a bond length (or angle) is the number of standard deviations the observed value is removed from the expected value. A bond length (or angle) with $|Z| > 2$ is considered an outlier worth inspection. RMSZ is the root-mean-square of all Z scores of the bond lengths (or angles).

Mol	Type	Chain	Res	Link	Bond lengths			Bond angles		
					Counts	RMSZ	# Z > 2	Counts	RMSZ	# Z > 2
3	AS	P	9[B]	3,2,4	18,23,24	0.61	0	17,33,36	0.72	1 (5%)

In the following table, the Chirals column lists the number of chiral outliers, the number of chiral centers analysed, the number of these observed in the model and the number defined in the Chemical Component Dictionary. Similar counts are reported in the Torsion and Rings columns. '-' means no outliers of that kind were identified.

Mol	Type	Chain	Res	Link	Chirals	Torsions	Rings
3	AS	P	9[B]	3,2,4	-	0/3/21/22	0/3/3/3

There are no bond length outliers.

All (1) bond angle outliers are listed below:

Mol	Chain	Res	Type	Atoms	Z	Observed(°)	Ideal(°)
3	P	9[B]	AS	C5-C6-N6	2.21	123.71	120.35

There are no chirality outliers.

There are no torsion outliers.

There are no ring outliers.

1 monomer is involved in 2 short contacts:

Mol	Chain	Res	Type	Clashes	Symm-Clashes
3	P	9[B]	AS	2	0

5.5 Carbohydrates [i](#)

There are no monosaccharides in this entry.

5.6 Ligand geometry [i](#)

Of 7 ligands modelled in this entry, 2 are monoatomic - leaving 5 for Mogul analysis.

In the following table, the Counts columns list the number of bonds (or angles) for which Mogul statistics could be retrieved, the number of bonds (or angles) that are observed in the model and

the number of bonds (or angles) that are defined in the Chemical Component Dictionary. The Link column lists molecule types, if any, to which the group is linked. The Z score for a bond length (or angle) is the number of standard deviations the observed value is removed from the expected value. A bond length (or angle) with $|Z| > 2$ is considered an outlier worth inspection. RMSZ is the root-mean-square of all Z scores of the bond lengths (or angles).

Mol	Type	Chain	Res	Link	Bond lengths			Bond angles		
					Counts	RMSZ	# Z > 2	Counts	RMSZ	# Z > 2
6	STP	A	506[A]	4	26,32,32	1.42	5 (19%)	29,50,50	1.64	6 (20%)
5	GOL	A	503	-	5,5,5	0.56	0	5,5,5	0.54	0
5	GOL	A	505	-	5,5,5	0.25	0	5,5,5	0.32	0
5	GOL	A	504	-	5,5,5	0.35	0	5,5,5	0.35	0
7	DPO	A	507[C]	-	6,8,8	0.76	0	13,13,13	1.17	1 (7%)

In the following table, the Chirals column lists the number of chiral outliers, the number of chiral centers analysed, the number of these observed in the model and the number defined in the Chemical Component Dictionary. Similar counts are reported in the Torsion and Rings columns. '-' means no outliers of that kind were identified.

Mol	Type	Chain	Res	Link	Chirals	Torsions	Rings
6	STP	A	506[A]	4	-	2/16/34/34	0/3/3/3
5	GOL	A	503	-	-	1/4/4/4	-
5	GOL	A	505	-	-	2/4/4/4	-
5	GOL	A	504	-	-	0/4/4/4	-
7	DPO	A	507[C]	-	-	2/6/6/6	-

All (5) bond length outliers are listed below:

Mol	Chain	Res	Type	Atoms	Z	Observed(Å)	Ideal(Å)
6	A	506[A]	STP	C2-N3	2.98	1.36	1.32
6	A	506[A]	STP	C3'-C4'	-2.86	1.45	1.53
6	A	506[A]	STP	C6-N6	2.69	1.43	1.34
6	A	506[A]	STP	C1'-N9	-2.62	1.41	1.49
6	A	506[A]	STP	C2'-C3'	-2.19	1.47	1.52

All (7) bond angle outliers are listed below:

Mol	Chain	Res	Type	Atoms	Z	Observed(°)	Ideal(°)
6	A	506[A]	STP	N3-C2-N1	-5.41	120.22	128.68
6	A	506[A]	STP	PB-O3B-PG	-3.45	120.98	132.83
7	A	507[C]	DPO	P2-O4-P1	-3.37	121.25	132.83
6	A	506[A]	STP	O3A-PA-O5'	3.18	110.30	101.36
6	A	506[A]	STP	C4-C5-N7	-2.16	107.14	109.40

Continued on next page...

Continued from previous page...

Mol	Chain	Res	Type	Atoms	Z	Observed(°)	Ideal(°)
6	A	506[A]	STP	C2'-C1'-N9	-2.16	109.30	114.27
6	A	506[A]	STP	C2'-C3'-C4'	2.02	106.97	102.76

There are no chirality outliers.

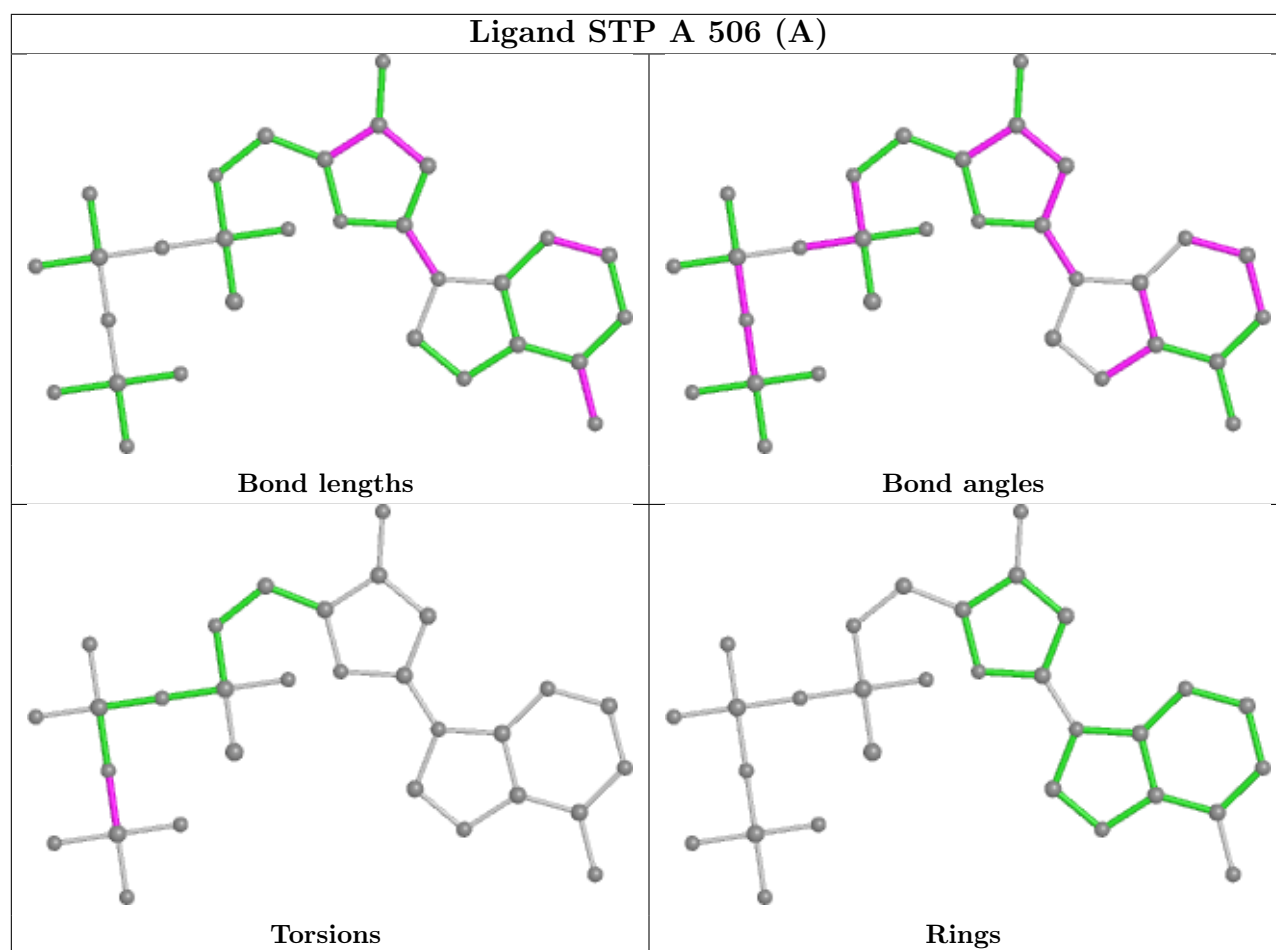
All (7) torsion outliers are listed below:

Mol	Chain	Res	Type	Atoms
5	A	505	GOL	O1-C1-C2-C3
5	A	505	GOL	O1-C1-C2-O2
6	A	506[A]	STP	PB-O3B-PG-O1G
7	A	507[C]	DPO	P1-O4-P2-O5
6	A	506[A]	STP	PB-O3B-PG-O3G
7	A	507[C]	DPO	P1-O4-P2-O7
5	A	503	GOL	O1-C1-C2-C3

There are no ring outliers.

No monomer is involved in short contacts.

The following is a two-dimensional graphical depiction of Mogul quality analysis of bond lengths, bond angles, torsion angles, and ring geometry for all instances of the Ligand of Interest. In addition, ligands with molecular weight > 250 and outliers as shown on the validation Tables will also be included. For torsion angles, if less than 5% of the Mogul distribution of torsion angles is within 10 degrees of the torsion angle in question, then that torsion angle is considered an outlier. Any bond that is central to one or more torsion angles identified as an outlier by Mogul will be highlighted in the graph. For rings, the root-mean-square deviation (RMSD) between the ring in question and similar rings identified by Mogul is calculated over all ring torsion angles. If the average RMSD is greater than 60 degrees and the minimal RMSD between the ring in question and any Mogul-identified rings is also greater than 60 degrees, then that ring is considered an outlier. The outliers are highlighted in purple. The color gray indicates Mogul did not find sufficient equivalents in the CSD to analyse the geometry.



5.7 Other polymers [i](#)

There are no such residues in this entry.

5.8 Polymer linkage issues [i](#)

There are no chain breaks in this entry.

6 Fit of model and data

6.1 Protein, DNA and RNA chains

In the following table, the column labelled ‘#RSRZ > 2’ contains the number (and percentage) of RSRZ outliers, followed by percent RSRZ outliers for the chain as percentile scores relative to all X-ray entries and entries of similar resolution. The OWAB column contains the minimum, median, 95th percentile and maximum values of the occupancy-weighted average B-factor per residue. The column labelled ‘Q < 0.9’ lists the number of (and percentage) of residues with an average occupancy less than 0.9.

Mol	Chain	Analysed	<RSRZ>	#RSRZ>2	OWAB(Å ²)	Q<0.9
1	A	430/435 (98%)	0.46	39 (9%) 9 11	17, 29, 66, 92	0
2	T	12/12 (100%)	0.44	2 (16%) 1 2	29, 34, 68, 82	0
3	P	8/9 (88%)	-0.36	0 100 100	26, 35, 41, 44	0
All	All	450/456 (98%)	0.44	41 (9%) 9 11	17, 30, 66, 92	0

All (41) RSRZ outliers are listed below:

Mol	Chain	Res	Type	RSRZ
1	A	378	LEU	9.4
1	A	1	MET	9.3
1	A	411	ILE	9.1
1	A	0	HIS	8.3
1	A	2	ALA	6.8
1	A	-1	PRO	6.7
1	A	412	GLN	6.6
1	A	3	THR	5.8
1	A	377	ARG	5.7
1	A	374	GLY	5.5
1	A	432	SER	5.4
1	A	181	ASP	5.3
2	T	3[A]	DT	5.3
1	A	179	GLN	4.8
1	A	180	ILE	4.8
1	A	183	LEU	4.7
1	A	160	THR	4.4
1	A	161	VAL	4.3
1	A	153	GLY	4.3
1	A	154	PRO	4.2
1	A	410	GLY	4.0
1	A	328	LYS	3.7
1	A	136	PRO	3.5

Continued on next page...

Continued from previous page...

Mol	Chain	Res	Type	RSRZ
2	T	1	DC	3.4
1	A	182	ASN	3.4
1	A	408	THR	3.2
1	A	-2	GLY	3.2
1	A	134	GLY	3.2
1	A	327	GLY	3.1
1	A	172	PHE	2.8
1	A	131	LYS	2.6
1	A	133	GLN	2.6
1	A	132	LEU	2.5
1	A	337	VAL	2.4
1	A	190	LEU	2.4
1	A	162	GLN	2.3
1	A	413	THR	2.2
1	A	417	PRO	2.2
1	A	375	ASP	2.1
1	A	431	ALA	2.1
1	A	135	GLN	2.0

6.2 Non-standard residues in protein, DNA, RNA chains [i](#)

In the following table, the Atoms column lists the number of modelled atoms in the group and the number defined in the chemical component dictionary. The B-factors column lists the minimum, median, 95th percentile and maximum values of B factors of atoms in the group. The column labelled 'Q< 0.9' lists the number of atoms with occupancy less than 0.9.

Mol	Type	Chain	Res	Atoms	RSCC	RSR	B-factors(Å ²)	Q<0.9
3	AS	P	9[B]	21/22	0.96	0.06	19,25,29,32	21

6.3 Carbohydrates [i](#)

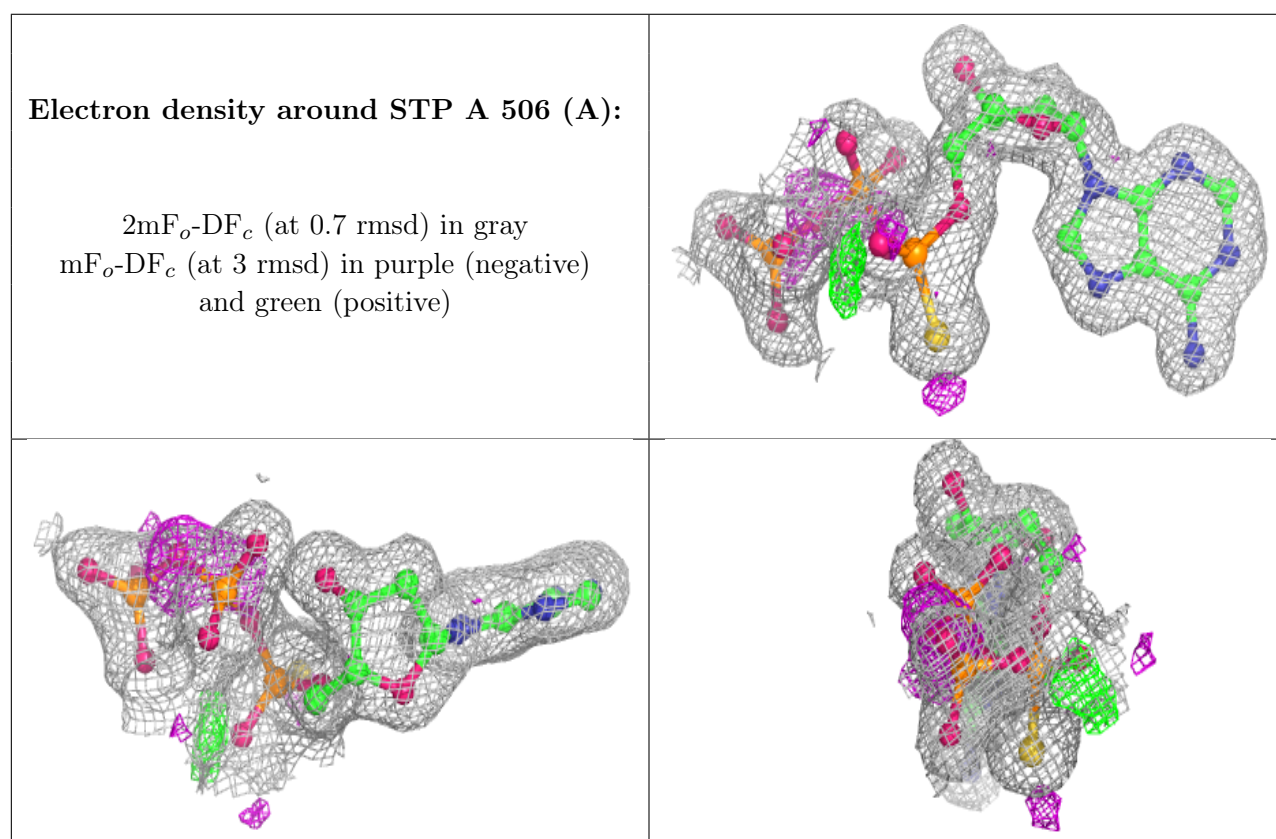
There are no monosaccharides in this entry.

6.4 Ligands [i](#)

In the following table, the Atoms column lists the number of modelled atoms in the group and the number defined in the chemical component dictionary. The B-factors column lists the minimum, median, 95th percentile and maximum values of B factors of atoms in the group. The column labelled 'Q< 0.9' lists the number of atoms with occupancy less than 0.9.

Mol	Type	Chain	Res	Atoms	RSCC	RSR	B-factors(\AA^2)	Q<0.9
5	GOL	A	505	6/6	0.51	0.46	44,46,55,55	0
5	GOL	A	504	6/6	0.81	0.24	31,47,50,57	0
5	GOL	A	503	6/6	0.94	0.16	26,29,34,39	0
6	STP	A	506[A]	30/30	0.96	0.07	19,25,29,31	30
7	DPO	A	507[C]	9/9	0.96	0.08	20,25,30,30	9
4	MN	A	502[B]	1/1	0.99	0.03	22,22,22,22	0
4	MN	A	501	1/1	0.99	0.02	24,24,24,24	0

The following is a graphical depiction of the model fit to experimental electron density of all instances of the Ligand of Interest. In addition, ligands with molecular weight > 250 and outliers as shown on the geometry validation Tables will also be included. Each fit is shown from different orientation to approximate a three-dimensional view.



6.5 Other polymers [\(i\)](#)

There are no such residues in this entry.