



# Full wwPDB X-ray Structure Validation Report ⓘ

Aug 6, 2023 – 02:25 AM EDT

PDB ID : 1KAR  
Title : L-HISTIDINOL DEHYDROGENASE (HISD) STRUCTURE COMPLEXED WITH HISTAMINE (INHIBITOR), ZINC AND NAD (COFACTOR)  
Authors : Barbosa, J.A.R.G.; Sivaraman, J.; Li, Y.; Larocque, R.; Matte, A.; Schrag, J.D.; Cygler, M.  
Deposited on : 2001-11-02  
Resolution : 2.10 Å(reported)

This is a Full wwPDB X-ray Structure Validation Report for a publicly released PDB entry.

We welcome your comments at [validation@mail.wwpdb.org](mailto:validation@mail.wwpdb.org)

A user guide is available at

<https://www.wwpdb.org/validation/2017/XrayValidationReportHelp>

with specific help available everywhere you see the ⓘ symbol.

The types of validation reports are described at

<http://www.wwpdb.org/validation/2017/FAQs#types>.

---

The following versions of software and data (see [references ⓘ](#)) were used in the production of this report:

MolProbity : 4.02b-467  
Mogul : 1.8.5 (274361), CSD as541be (2020)  
Xtrriage (Phenix) : **NOT EXECUTED**  
EDS : **NOT EXECUTED**  
Percentile statistics : 20191225.v01 (using entries in the PDB archive December 25th 2019)  
Ideal geometry (proteins) : Engh & Huber (2001)  
Ideal geometry (DNA, RNA) : Parkinson et al. (1996)  
Validation Pipeline (wwPDB-VP) : 2.35

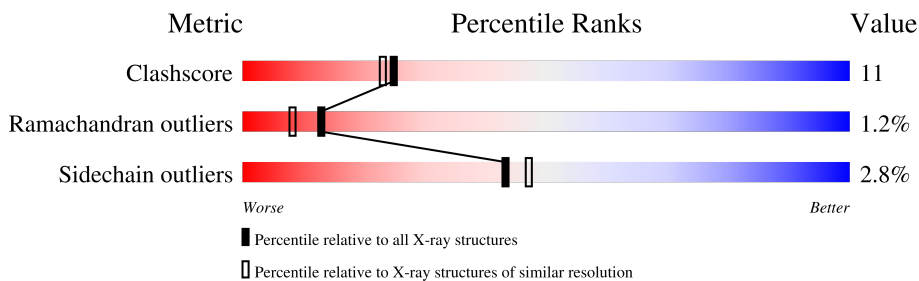
# 1 Overall quality at a glance

The following experimental techniques were used to determine the structure:

*X-RAY DIFFRACTION*

The reported resolution of this entry is 2.10 Å.

Percentile scores (ranging between 0-100) for global validation metrics of the entry are shown in the following graphic. The table shows the number of entries on which the scores are based.



Metric	Whole archive (#Entries)	Similar resolution (#Entries, resolution range(Å))
Clashscore	141614	5710 (2.10-2.10)
Ramachandran outliers	138981	5647 (2.10-2.10)
Sidechain outliers	138945	5648 (2.10-2.10)

The table below summarises the geometric issues observed across the polymeric chains and their fit to the electron density. The red, orange, yellow and green segments of the lower bar indicate the fraction of residues that contain outliers for  $\geq 3$ , 2, 1 and 0 types of geometric quality criteria respectively. A grey segment represents the fraction of residues that are not modelled. The numeric value for each fraction is indicated below the corresponding segment, with a dot representing fractions  $\leq 5\%$ .

Note EDS was not executed.

Mol	Chain	Length	Quality of chain
1	A	434	
1	B	434	

## 2 Entry composition

There are 3 unique types of molecules in this entry. The entry contains 6438 atoms, of which 0 are hydrogens and 0 are deuteriums.

In the tables below, the ZeroOcc column contains the number of atoms modelled with zero occupancy, the AltConf column contains the number of residues with at least one atom in alternate conformation and the Trace column contains the number of residues modelled with at most 2 atoms.

- Molecule 1 is a protein called Histidinol dehydrogenase.

Mol	Chain	Residues	Atoms						ZeroOcc	AltConf	Trace
			Total	C	N	O	S	Se			
1	A	431	3210	2000	559	638	7	6	0	0	0
1	B	431	3210	2000	559	638	7	6	0	0	0

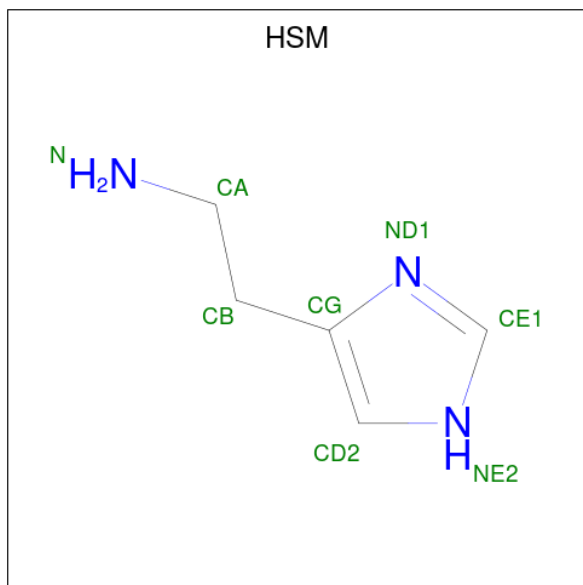
There are 22 discrepancies between the modelled and reference sequences:

Chain	Residue	Modelled	Actual	Comment	Reference
A	1	MSE	MET	modified residue	UNP P06988
A	15	GLU	VAL	SEE REMARK 999	UNP P06988
A	22	MSE	MET	modified residue	UNP P06988
A	88	MSE	MET	modified residue	UNP P06988
A	144	MSE	MET	modified residue	UNP P06988
A	150	SER	ARG	SEE REMARK 999	UNP P06988
A	232	MSE	MET	modified residue	UNP P06988
A	277	MSE	MET	modified residue	UNP P06988
A	313	LEU	SER	SEE REMARK 999	UNP P06988
A	390	MSE	MET	modified residue	UNP P06988
A	403	LEU	VAL	SEE REMARK 999	UNP P06988
B	1	MSE	MET	modified residue	UNP P06988
B	15	GLU	VAL	SEE REMARK 999	UNP P06988
B	22	MSE	MET	modified residue	UNP P06988
B	88	MSE	MET	modified residue	UNP P06988
B	144	MSE	MET	modified residue	UNP P06988
B	150	SER	ARG	SEE REMARK 999	UNP P06988
B	232	MSE	MET	modified residue	UNP P06988
B	277	MSE	MET	modified residue	UNP P06988
B	313	LEU	SER	SEE REMARK 999	UNP P06988
B	390	MSE	MET	modified residue	UNP P06988
B	403	LEU	VAL	SEE REMARK 999	UNP P06988

- Molecule 2 is ZINC ION (three-letter code: ZN) (formula: Zn).

Mol	Chain	Residues	Atoms	ZeroOcc	AltConf
2	A	1	Total Zn 1 1	0	0
2	B	1	Total Zn 1 1	0	0

- Molecule 3 is HISTAMINE (three-letter code: HSM) (formula: C<sub>5</sub>H<sub>9</sub>N<sub>3</sub>).



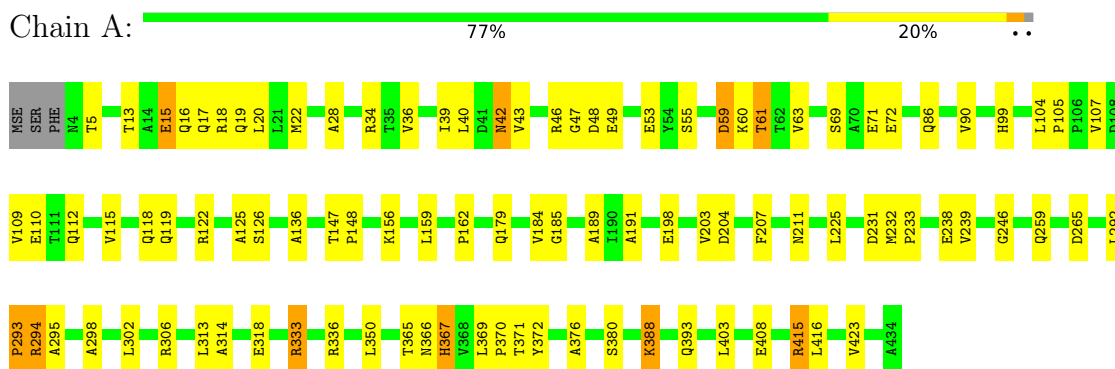
Mol	Chain	Residues	Atoms	ZeroOcc	AltConf
3	A	1	Total C N 8 5 3	0	0
3	B	1	Total C N 8 5 3	0	0

### 3 Residue-property plots [i](#)

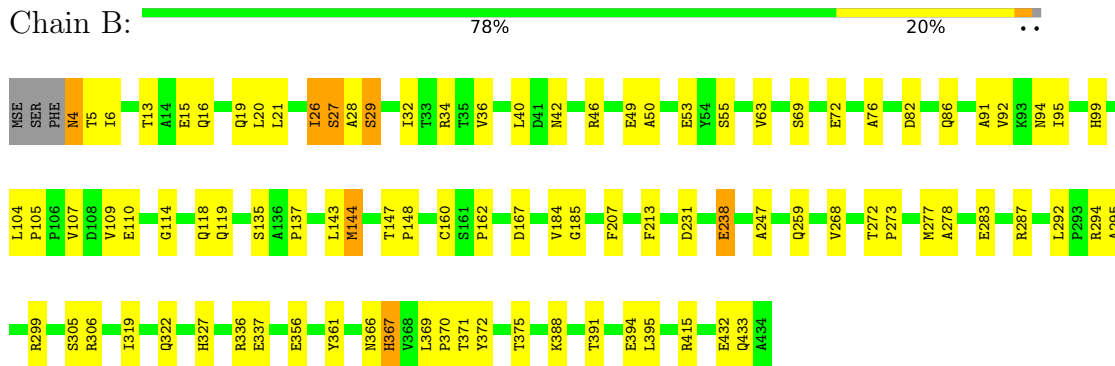
These plots are drawn for all protein, RNA, DNA and oligosaccharide chains in the entry. The first graphic for a chain summarises the proportions of the various outlier classes displayed in the second graphic. The second graphic shows the sequence view annotated by issues in geometry. Residues are color-coded according to the number of geometric quality criteria for which they contain at least one outlier: green = 0, yellow = 1, orange = 2 and red = 3 or more. Stretches of 2 or more consecutive residues without any outlier are shown as a green connector. Residues present in the sample, but not in the model, are shown in grey.

Note EDS was not executed.

- Molecule 1: Histidinol dehydrogenase



- Molecule 1: Histidinol dehydrogenase



## 4 Data and refinement statistics

Xtrriage (Phenix) and EDS were not executed - this section is therefore incomplete.

Property	Value	Source
Space group	P 21 21 21	Depositor
Cell constants a, b, c, $\alpha$ , $\beta$ , $\gamma$	55.34Å 109.04Å 157.94Å 90.00° 90.00° 90.00°	Depositor
Resolution (Å)	38.84 – 2.10	Depositor
% Data completeness (in resolution range)	89.1 (38.84-2.10)	Depositor
$R_{merge}$	(Not available)	Depositor
$R_{sym}$	0.07	Depositor
Refinement program	CNS	Depositor
R, $R_{free}$	0.248 , 0.281	Depositor
Estimated twinning fraction	No twinning to report.	Xtrriage
Total number of atoms	6438	wwPDB-VP
Average B, all atoms (Å <sup>2</sup> )	34.0	wwPDB-VP

## 5 Model quality [i](#)

### 5.1 Standard geometry [i](#)

Bond lengths and bond angles in the following residue types are not validated in this section: ZN, HSM

The Z score for a bond length (or angle) is the number of standard deviations the observed value is removed from the expected value. A bond length (or angle) with  $|Z| > 5$  is considered an outlier worth inspection. RMSZ is the root-mean-square of all Z scores of the bond lengths (or angles).

Mol	Chain	Bond lengths		Bond angles	
		RMSZ	# Z  >5	RMSZ	# Z  >5
1	A	0.33	0/3252	0.59	0/4416
1	B	0.33	0/3252	0.59	0/4416
All	All	0.33	0/6504	0.59	0/8832

There are no bond length outliers.

There are no bond angle outliers.

There are no chirality outliers.

There are no planarity outliers.

### 5.2 Too-close contacts [i](#)

In the following table, the Non-H and H(model) columns list the number of non-hydrogen atoms and hydrogen atoms in the chain respectively. The H(added) column lists the number of hydrogen atoms added and optimized by MolProbity. The Clashes column lists the number of clashes within the asymmetric unit, whereas Symm-Clashes lists symmetry-related clashes.

Mol	Chain	Non-H	H(model)	H(added)	Clashes	Symm-Clashes
1	A	3210	0	3228	80	0
1	B	3210	0	3228	84	0
2	A	1	0	0	0	0
2	B	1	0	0	0	0
3	A	8	0	9	0	0
3	B	8	0	9	1	0
All	All	6438	0	6474	139	0

The all-atom clashscore is defined as the number of clashes found per 1000 atoms (including hydrogen atoms). The all-atom clashscore for this structure is 11.

All (139) close contacts within the same asymmetric unit are listed below, sorted by their clash

magnitude.

Atom-1	Atom-2	Interatomic distance (Å)	Clash overlap (Å)
1:A:225:LEU:HD11	1:B:26:ILE:HG12	1.39	1.01
1:A:336:ARG:HH12	1:B:118:GLN:NE2	1.59	1.00
1:A:112:GLN:HE21	1:B:94:ASN:HD21	1.07	0.99
1:B:42:ASN:HD21	1:B:46:ARG:HH11	1.12	0.97
1:B:144:MSE:HE3	1:B:144:MSE:HA	1.46	0.97
1:B:26:ILE:HG13	1:B:27:SER:H	1.30	0.93
1:A:336:ARG:HH12	1:B:118:GLN:HE22	1.06	0.92
1:A:112:GLN:NE2	1:B:94:ASN:HD21	1.67	0.92
1:A:118:GLN:HE22	1:B:336:ARG:HH22	1.13	0.90
1:A:336:ARG:NH1	1:B:118:GLN:HE22	1.71	0.87
1:A:415:ARG:NH1	1:B:294:ARG:HH22	1.74	0.85
1:B:5:THR:O	1:B:6:ILE:HD13	1.83	0.80
1:A:40:LEU:HD23	1:A:191:ALA:HB2	1.64	0.77
1:A:136:ALA:HB2	1:B:415:ARG:HE	1.51	0.75
1:A:15:GLU:HA	1:A:18:ARG:HE	1.52	0.73
1:B:13:THR:OG1	1:B:16:GLN:HG3	1.88	0.73
1:A:118:GLN:HE22	1:B:336:ARG:NH2	1.86	0.72
1:B:26:ILE:HG13	1:B:27:SER:N	2.05	0.71
1:A:125:ALA:HB3	1:A:204:ASP:OD2	1.89	0.70
1:B:144:MSE:HA	1:B:144:MSE:CE	2.22	0.69
1:A:18:ARG:O	1:A:22:MSE:HG2	1.92	0.69
1:A:118:GLN:NE2	1:B:336:ARG:HH22	1.91	0.67
1:B:42:ASN:HD21	1:B:46:ARG:NH1	1.91	0.67
1:B:135:SER:O	1:B:137:PRO:HD3	1.96	0.66
1:A:40:LEU:CD2	1:A:191:ALA:HB2	2.26	0.66
1:A:15:GLU:HG2	1:A:18:ARG:HH21	1.61	0.65
1:A:112:GLN:HE21	1:B:94:ASN:ND2	1.87	0.64
1:A:13:THR:O	1:A:17:GLN:HG3	1.98	0.64
1:A:122:ARG:HB2	1:A:388:LYS:HD3	1.79	0.64
1:B:6:ILE:HD12	1:B:278:ALA:HB1	1.80	0.64
1:A:69:SER:OG	1:A:72:GLU:HG3	1.98	0.63
1:A:136:ALA:CB	1:B:415:ARG:HE	2.10	0.63
1:B:26:ILE:CG1	1:B:27:SER:H	2.06	0.62
1:A:415:ARG:NH1	1:B:294:ARG:NH2	2.47	0.62
1:A:376:ALA:O	1:B:388:LYS:HD3	2.01	0.61
1:B:49:GLU:O	1:B:53:GLU:HG3	2.01	0.61
1:B:46:ARG:HH22	1:B:53:GLU:CD	2.03	0.61
1:A:104:LEU:HD22	1:B:104:LEU:CD2	2.31	0.60
1:A:42:ASN:HD21	1:A:46:ARG:NE	1.99	0.60
1:B:147:THR:HB	1:B:148:PRO:HD3	1.83	0.60
1:A:294:ARG:HD3	1:A:294:ARG:H	1.67	0.59

*Continued on next page...*



*Continued from previous page...*

Atom-1	Atom-2	Interatomic distance (Å)	Clash overlap (Å)
1:B:21:LEU:HD13	1:B:322:GLN:HG2	1.83	0.59
1:B:238:GLU:O	1:B:327:HIS:HD2	1.85	0.59
1:B:144:MSE:HE2	1:B:366:ASN:ND2	2.17	0.59
1:B:162:PRO:HG3	1:B:185:GLY:HA3	1.85	0.59
1:A:104:LEU:HD22	1:B:104:LEU:HD21	1.85	0.57
1:B:21:LEU:HD21	1:B:319:ILE:HG23	1.85	0.57
1:A:13:THR:HG23	1:A:16:GLN:OE1	2.04	0.57
1:B:29:SER:HB3	1:B:32:ILE:HG22	1.87	0.56
1:A:136:ALA:HB2	1:B:415:ARG:NE	2.19	0.54
1:A:416:LEU:HD12	1:B:361:TYR:OH	2.07	0.54
1:B:42:ASN:ND2	1:B:46:ARG:HH11	1.93	0.54
1:B:26:ILE:O	1:B:27:SER:HB3	2.08	0.53
1:B:144:MSE:HE2	1:B:366:ASN:CG	2.29	0.53
1:B:107:VAL:HB	1:B:119:GLN:HB3	1.90	0.52
1:A:415:ARG:HH11	1:B:294:ARG:NH2	2.08	0.52
1:A:99:HIS:CE1	1:A:366:ASN:HD22	2.28	0.51
1:B:69:SER:OG	1:B:72:GLU:HG3	2.11	0.51
1:A:314:ALA:O	1:A:318:GLU:HG3	2.10	0.51
1:A:39:ILE:O	1:A:43:VAL:HG23	2.11	0.51
1:A:15:GLU:HG2	1:A:18:ARG:NH2	2.24	0.51
1:A:109:VAL:HG22	1:A:110:GLU:N	2.26	0.51
1:B:29:SER:CB	1:B:32:ILE:HG22	2.42	0.50
1:A:42:ASN:HD21	1:A:46:ARG:CZ	2.24	0.49
1:A:156:LYS:HA	1:A:179:GLN:OE1	2.12	0.49
1:B:36:VAL:O	1:B:40:LEU:HD13	2.12	0.49
1:A:147:THR:HB	1:A:148:PRO:HD3	1.93	0.49
1:A:48:ASP:OD2	1:A:198:GLU:HB2	2.13	0.48
1:A:122:ARG:O	1:A:388:LYS:HD2	2.13	0.48
1:B:91:ALA:O	1:B:95:ILE:HG13	2.13	0.48
1:B:4:ASN:CG	1:B:5:THR:H	2.15	0.48
1:A:105:PRO:HG3	1:B:105:PRO:HG2	1.96	0.48
1:B:76:ALA:HB1	1:B:167:ASP:HA	1.96	0.48
1:A:49:GLU:O	1:A:53:GLU:HG3	2.14	0.47
1:B:32:ILE:HG13	1:B:213:PHE:CE2	2.50	0.47
1:B:82:ASP:O	1:B:86:GLN:HG3	2.14	0.47
1:B:259:GLN:NE2	1:B:356:GLU:OE2	2.48	0.47
1:B:292:LEU:CB	1:B:295:ALA:HB2	2.44	0.47
1:A:46:ARG:HH22	1:A:53:GLU:CD	2.19	0.46
1:A:207:PHE:CD2	1:A:231:ASP:HB3	2.51	0.46
1:A:36:VAL:O	1:A:40:LEU:HG	2.16	0.46
1:B:29:SER:O	1:B:32:ILE:HG22	2.16	0.46

*Continued on next page...*

*Continued from previous page...*

Atom-1	Atom-2	Interatomic distance (Å)	Clash overlap (Å)
1:B:247:ALA:O	1:B:277:MSE:HE1	2.16	0.46
1:A:292:LEU:CB	1:A:295:ALA:HB2	2.46	0.45
1:A:107:VAL:HB	1:A:119:GLN:HB3	1.97	0.45
1:A:55:SER:CB	1:A:63:VAL:HG12	2.47	0.45
1:A:55:SER:OG	1:A:61:THR:HG23	2.17	0.45
1:A:162:PRO:HG3	1:A:185:GLY:HA3	1.97	0.45
1:B:292:LEU:HB2	1:B:295:ALA:HB2	1.97	0.45
1:B:395:LEU:HD12	1:B:395:LEU:N	2.32	0.45
1:B:114:GLY:O	1:B:395:LEU:HA	2.17	0.45
1:B:20:LEU:O	1:B:306:ARG:NH2	2.49	0.44
1:B:99:HIS:CE1	1:B:366:ASN:HD22	2.34	0.44
1:A:408:GLU:HG3	1:A:423:VAL:HG11	1.98	0.44
1:A:60:LYS:O	1:A:60:LYS:HG3	2.18	0.44
1:A:59:ASP:O	1:A:61:THR:HG22	2.17	0.44
1:A:292:LEU:HB2	1:A:295:ALA:HB2	1.99	0.43
1:A:42:ASN:HD21	1:A:46:ARG:HE	1.65	0.43
1:A:86:GLN:O	1:A:90:VAL:HG23	2.18	0.43
1:B:55:SER:CB	1:B:63:VAL:HG12	2.48	0.43
1:A:367:HIS:CD2	1:A:367:HIS:C	2.92	0.43
1:B:369:LEU:HB3	1:B:370:PRO:HD2	1.99	0.43
1:B:21:LEU:HD13	1:B:322:GLN:CG	2.48	0.43
1:B:46:ARG:HB2	1:B:50:ALA:HB2	2.01	0.43
1:A:126:SER:OG	1:A:203:VAL:HA	2.20	0.42
1:A:159:LEU:C	1:A:159:LEU:HD23	2.39	0.42
1:A:238:GLU:HG3	1:A:371:THR:OG1	2.20	0.42
1:A:110:GLU:HA	1:A:115:VAL:O	2.20	0.42
1:B:367:HIS:CG	3:B:503:HSM:HB1	2.54	0.42
1:A:20:LEU:O	1:A:306:ARG:HD3	2.19	0.42
1:A:293:PRO:HG2	1:A:294:ARG:H	1.84	0.42
1:A:232:MSE:HB2	1:A:233:PRO:HD2	2.01	0.42
1:A:369:LEU:HB3	1:A:370:PRO:HD2	2.01	0.42
1:A:112:GLN:HE22	1:A:403:LEU:CD1	2.32	0.42
1:A:34:ARG:HH11	1:A:34:ARG:HB3	1.84	0.41
1:A:184:VAL:HG22	1:A:189:ALA:HB2	2.01	0.41
1:A:104:LEU:HD22	1:B:104:LEU:HD22	2.01	0.41
1:B:268:VAL:HG23	1:B:305:SER:HB2	2.03	0.41
1:A:365:THR:HB	1:B:391:THR:HG21	2.01	0.41
1:B:272:THR:HA	1:B:273:PRO:HD3	1.92	0.41
1:B:238:GLU:HG3	1:B:371:THR:OG1	2.20	0.41
1:B:283:GLU:O	1:B:287:ARG:HG2	2.20	0.41
1:B:160:CYS:HB3	1:B:184:VAL:HG23	2.02	0.41

*Continued on next page...*

Continued from previous page...

Atom-1	Atom-2	Interatomic distance (Å)	Clash overlap (Å)
1:B:370:PRO:HG2	1:B:375:THR:HG22	2.03	0.41
1:A:350:LEU:HB2	1:B:394:GLU:HB2	2.03	0.41
1:B:92:VAL:CG2	1:B:143:LEU:HD22	2.51	0.41
1:A:239:VAL:HG12	1:A:259:GLN:HG2	2.02	0.41
1:B:15:GLU:O	1:B:19:GLN:HG3	2.21	0.41
1:B:109:VAL:HG22	1:B:110:GLU:N	2.35	0.41
1:A:225:LEU:HD13	1:B:372:TYR:OH	2.21	0.40
1:A:246:GLY:HA3	1:A:333:ARG:CD	2.51	0.40
1:A:370:PRO:HD3	1:A:380:SER:HA	2.03	0.40
1:B:207:PHE:CD2	1:B:231:ASP:HB3	2.56	0.40
1:A:298:ALA:O	1:A:302:LEU:HG	2.22	0.40
1:B:432:GLU:OE2	1:B:433:GLN:N	2.55	0.40
1:A:42:ASN:HD21	1:A:46:ARG:NH2	2.19	0.40
1:A:71:GLU:H	1:A:71:GLU:CD	2.25	0.40
1:B:34:ARG:HB2	1:B:34:ARG:CZ	2.51	0.40
1:B:388:LYS:HE3	1:B:388:LYS:HB2	1.86	0.40

There are no symmetry-related clashes.

## 5.3 Torsion angles [i](#)

### 5.3.1 Protein backbone [i](#)

In the following table, the Percentiles column shows the percent Ramachandran outliers of the chain as a percentile score with respect to all X-ray entries followed by that with respect to entries of similar resolution.

The Analysed column shows the number of residues for which the backbone conformation was analysed, and the total number of residues.

Mol	Chain	Analysed	Favoured	Allowed	Outliers	Percentiles
1	A	429/434 (99%)	405 (94%)	18 (4%)	6 (1%)	<b>11</b> <b>6</b>
1	B	429/434 (99%)	406 (95%)	19 (4%)	4 (1%)	<b>17</b> <b>12</b>
All	All	858/868 (99%)	811 (94%)	37 (4%)	10 (1%)	<b>13</b> <b>8</b>

All (10) Ramachandran outliers are listed below:

Mol	Chain	Res	Type
1	B	26	ILE
1	B	27	SER

Continued on next page...

*Continued from previous page...*

Mol	Chain	Res	Type
1	A	5	THR
1	A	59	ASP
1	A	293	PRO
1	B	28	ALA
1	A	28	ALA
1	A	47	GLY
1	A	211	ASN
1	B	29	SER

### 5.3.2 Protein sidechains [i](#)

In the following table, the Percentiles column shows the percent sidechain outliers of the chain as a percentile score with respect to all X-ray entries followed by that with respect to entries of similar resolution.

The Analysed column shows the number of residues for which the sidechain conformation was analysed, and the total number of residues.

Mol	Chain	Analysed	Rotameric	Outliers	Percentiles	
1	A	344/340 (101%)	331 (96%)	13 (4%)	33	34
1	B	344/340 (101%)	338 (98%)	6 (2%)	60	67
All	All	688/680 (101%)	669 (97%)	19 (3%)	43	47

All (19) residues with a non-rotameric sidechain are listed below:

Mol	Chain	Res	Type
1	A	15	GLU
1	A	19	GLN
1	A	42	ASN
1	A	61	THR
1	A	265	ASP
1	A	294	ARG
1	A	313	LEU
1	A	333	ARG
1	A	367	HIS
1	A	372	TYR
1	A	388	LYS
1	A	393	GLN
1	A	415	ARG
1	B	4	ASN
1	B	144	MSE

*Continued on next page...*

*Continued from previous page...*

Mol	Chain	Res	Type
1	B	238	GLU
1	B	299	ARG
1	B	337	GLU
1	B	367	HIS

Sometimes sidechains can be flipped to improve hydrogen bonding and reduce clashes. All (16) such sidechains are listed below:

Mol	Chain	Res	Type
1	A	37	ASN
1	A	42	ASN
1	A	99	HIS
1	A	112	GLN
1	A	118	GLN
1	A	223	GLN
1	A	387	GLN
1	B	4	ASN
1	B	42	ASN
1	B	99	HIS
1	B	118	GLN
1	B	119	GLN
1	B	188	GLN
1	B	259	GLN
1	B	327	HIS
1	B	393	GLN

### 5.3.3 RNA [i](#)

There are no RNA molecules in this entry.

### 5.4 Non-standard residues in protein, DNA, RNA chains [i](#)

There are no non-standard protein/DNA/RNA residues in this entry.

### 5.5 Carbohydrates [i](#)

There are no monosaccharides in this entry.

## 5.6 Ligand geometry

Of 4 ligands modelled in this entry, 2 are monoatomic - leaving 2 for Mogul analysis.

In the following table, the Counts columns list the number of bonds (or angles) for which Mogul statistics could be retrieved, the number of bonds (or angles) that are observed in the model and the number of bonds (or angles) that are defined in the Chemical Component Dictionary. The Link column lists molecule types, if any, to which the group is linked. The Z score for a bond length (or angle) is the number of standard deviations the observed value is removed from the expected value. A bond length (or angle) with  $|Z| > 2$  is considered an outlier worth inspection. RMSZ is the root-mean-square of all Z scores of the bond lengths (or angles).

Mol	Type	Chain	Res	Link	Bond lengths			Bond angles		
					Counts	RMSZ	# Z  > 2	Counts	RMSZ	# Z  > 2
3	HSM	A	502	2	3,8,8	0.50	0	3,9,9	1.16	0
3	HSM	B	503	2	3,8,8	0.50	0	3,9,9	1.21	0

In the following table, the Chirals column lists the number of chiral outliers, the number of chiral centers analysed, the number of these observed in the model and the number defined in the Chemical Component Dictionary. Similar counts are reported in the Torsion and Rings columns. '-' means no outliers of that kind were identified.

Mol	Type	Chain	Res	Link	Chirals	Torsions	Rings
3	HSM	A	502	2	-	1/2/3/3	0/1/1/1
3	HSM	B	503	2	-	1/2/3/3	0/1/1/1

There are no bond length outliers.

There are no bond angle outliers.

There are no chirality outliers.

All (2) torsion outliers are listed below:

Mol	Chain	Res	Type	Atoms
3	A	502	HSM	N-CA-CB-CG
3	B	503	HSM	N-CA-CB-CG

There are no ring outliers.

1 monomer is involved in 1 short contact:

Mol	Chain	Res	Type	Clashes	Symm-Clashes
3	B	503	HSM	1	0

## 5.7 Other polymers [i](#)

There are no such residues in this entry.

## 5.8 Polymer linkage issues [i](#)

There are no chain breaks in this entry.

## 6 Fit of model and data [i](#)

### 6.1 Protein, DNA and RNA chains [i](#)

EDS was not executed - this section is therefore empty.

### 6.2 Non-standard residues in protein, DNA, RNA chains [i](#)

EDS was not executed - this section is therefore empty.

### 6.3 Carbohydrates [i](#)

EDS was not executed - this section is therefore empty.

### 6.4 Ligands [i](#)

EDS was not executed - this section is therefore empty.

### 6.5 Other polymers [i](#)

EDS was not executed - this section is therefore empty.