



Full wwPDB X-ray Structure Validation Report ⓘ

Jan 4, 2024 – 11:15 pm GMT

PDB ID : 5K8W
Title : Crystal structure of mouse CARM1 in complex with inhibitor U2
Authors : Cura, V.; Marechal, N.; Mailliot, J.; Troffer-Charlier, N.; Hassenboehler, P.;
Wurtz, J.M.; Bonnefond, L.; Cavarelli, J.
Deposited on : 2016-05-31
Resolution : 2.10 Å(reported)

This is a Full wwPDB X-ray Structure Validation Report for a publicly released PDB entry.

We welcome your comments at validation@mail.wwpdb.org

A user guide is available at

<https://www.wwpdb.org/validation/2017/XrayValidationReportHelp>

with specific help available everywhere you see the ⓘ symbol.

The types of validation reports are described at

<http://www.wwpdb.org/validation/2017/FAQs#types>.

The following versions of software and data (see [references ⓘ](#)) were used in the production of this report:

MolProbity : 4.02b-467
Mogul : 1.8.4, CSD as541be (2020)
Xtriage (Phenix) : 1.13
EDS : 2.36
buster-report : 1.1.7 (2018)
Percentile statistics : 20191225.v01 (using entries in the PDB archive December 25th 2019)
Refmac : 5.8.0158
CCP4 : 7.0.044 (Gargrove)
Ideal geometry (proteins) : Engh & Huber (2001)
Ideal geometry (DNA, RNA) : Parkinson et al. (1996)
Validation Pipeline (wwPDB-VP) : 2.36

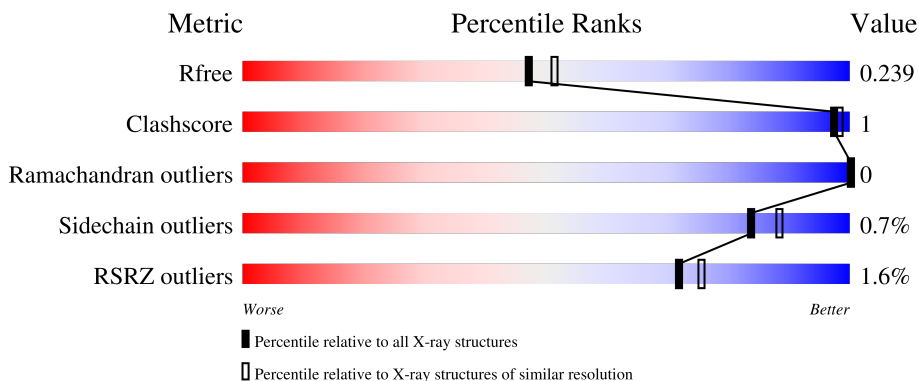
1 Overall quality at a glance

The following experimental techniques were used to determine the structure:

X-RAY DIFFRACTION

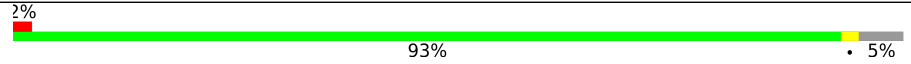
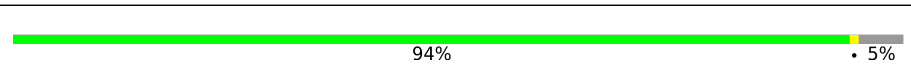
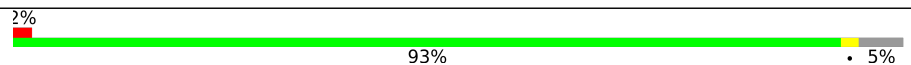
The reported resolution of this entry is 2.10 Å.

Percentile scores (ranging between 0-100) for global validation metrics of the entry are shown in the following graphic. The table shows the number of entries on which the scores are based.



Metric	Whole archive (#Entries)	Similar resolution (#Entries, resolution range(Å))
R_{free}	130704	5197 (2.10-2.10)
Clashscore	141614	5710 (2.10-2.10)
Ramachandran outliers	138981	5647 (2.10-2.10)
Sidechain outliers	138945	5648 (2.10-2.10)
RSRZ outliers	127900	5083 (2.10-2.10)

The table below summarises the geometric issues observed across the polymeric chains and their fit to the electron density. The red, orange, yellow and green segments of the lower bar indicate the fraction of residues that contain outliers for ≥ 3 , 2, 1 and 0 types of geometric quality criteria respectively. A grey segment represents the fraction of residues that are not modelled. The numeric value for each fraction is indicated below the corresponding segment, with a dot representing fractions $\leq 5\%$. The upper red bar (where present) indicates the fraction of residues that have poor fit to the electron density. The numeric value is given above the bar.

Mol	Chain	Length	Quality of chain
1	A	361	 2% 93% 5%
1	B	361	 2% 93% 5%
1	C	361	 94% 5%
1	D	361	 2% 93% 5%

2 Entry composition [i](#)

There are 7 unique types of molecules in this entry. The entry contains 23747 atoms, of which 11204 are hydrogens and 0 are deuteriums.

In the tables below, the ZeroOcc column contains the number of atoms modelled with zero occupancy, the AltConf column contains the number of residues with at least one atom in alternate conformation and the Trace column contains the number of residues modelled with at most 2 atoms.

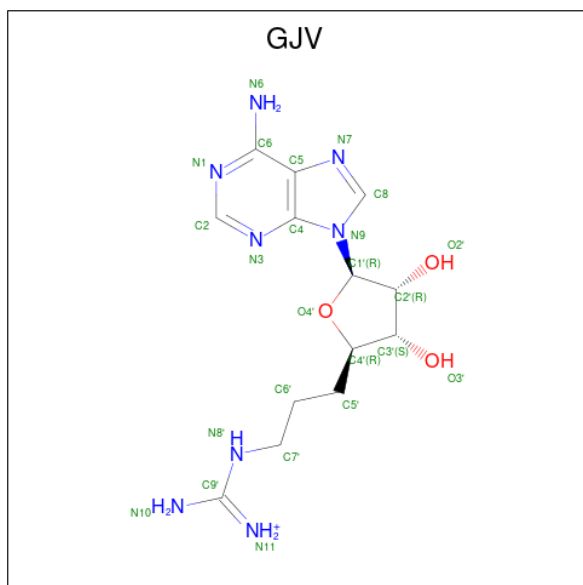
- Molecule 1 is a protein called Histone-arginine methyltransferase CARM1.

Mol	Chain	Residues	Atoms					ZeroOcc	AltConf	Trace	
			Total	C	H	N	O				S
1	A	344	5580	1813	2770	467	514	16	0	14	0
1	B	344	5566	1817	2760	464	511	14	0	10	0
1	C	343	5493	1787	2723	459	509	15	0	6	0
1	D	342	5479	1786	2715	457	507	14	0	7	0

There are 12 discrepancies between the modelled and reference sequences:

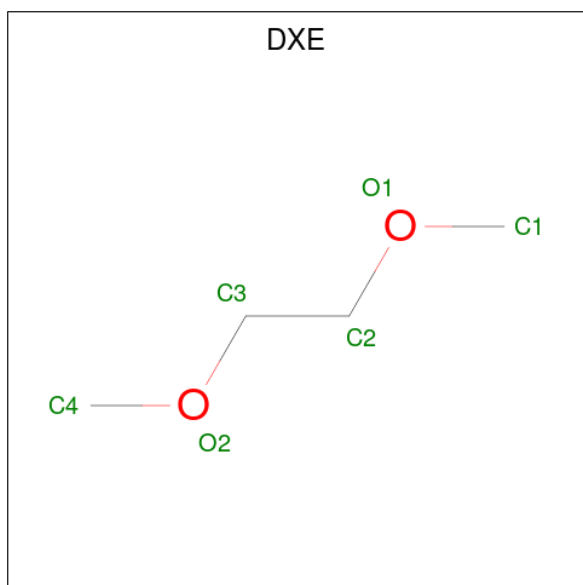
Chain	Residue	Modelled	Actual	Comment	Reference
A	127	GLY	-	expression tag	UNP Q9WVG6
A	128	HIS	-	expression tag	UNP Q9WVG6
A	129	MET	-	expression tag	UNP Q9WVG6
B	127	GLY	-	expression tag	UNP Q9WVG6
B	128	HIS	-	expression tag	UNP Q9WVG6
B	129	MET	-	expression tag	UNP Q9WVG6
C	127	GLY	-	expression tag	UNP Q9WVG6
C	128	HIS	-	expression tag	UNP Q9WVG6
C	129	MET	-	expression tag	UNP Q9WVG6
D	127	GLY	-	expression tag	UNP Q9WVG6
D	128	HIS	-	expression tag	UNP Q9WVG6
D	129	MET	-	expression tag	UNP Q9WVG6

- Molecule 2 is 9-(7-{[amino(iminio)methyl]amino}-5,6,7-trideoxy-beta-D-ribo-heptofuranosyl)-9H-purin-6-amine (three-letter code: GJV) (formula: C₁₃H₂₁N₈O₃).



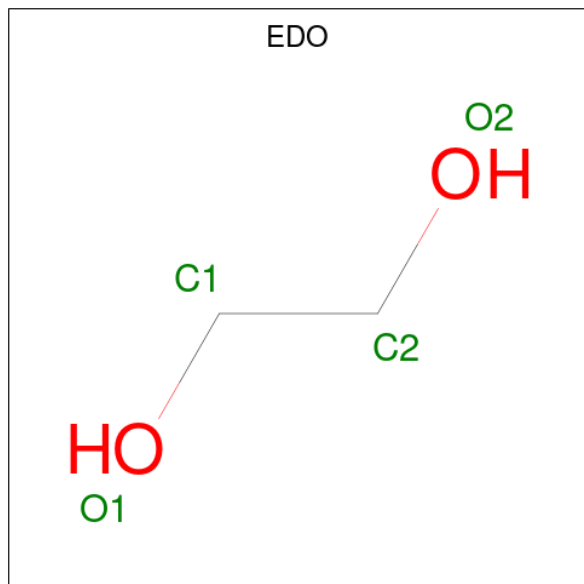
Mol	Chain	Residues	Atoms					ZeroOcc	AltConf
			Total	C	H	N	O		
2	A	1	Total	C	H	N	O	0	0
			45	13	21	8	3		
2	B	1	Total	C	H	N	O	0	0
			45	13	21	8	3		
2	C	1	Total	C	H	N	O	0	0
			45	13	21	8	3		
2	D	1	Total	C	H	N	O	0	0
			45	13	21	8	3		

- Molecule 3 is 1,2-DIMETHOXYETHANE (three-letter code: DXE) (formula: C₄H₁₀O₂).



Mol	Chain	Residues	Atoms				ZeroOcc	AltConf
3	A	1	Total	C	H	O	0	0
			16	4	10	2		
3	A	1	Total	C	H	O	0	0
			16	4	10	2		
3	C	1	Total	C	H	O	0	0
			16	4	10	2		
3	C	1	Total	C	H	O	0	0
			16	4	10	2		
3	C	1	Total	C	H	O	0	0
			16	4	10	2		
3	D	1	Total	C	H	O	0	0
			16	4	10	2		

- Molecule 4 is 1,2-ETHANEDIOL (three-letter code: EDO) (formula: C₂H₆O₂).



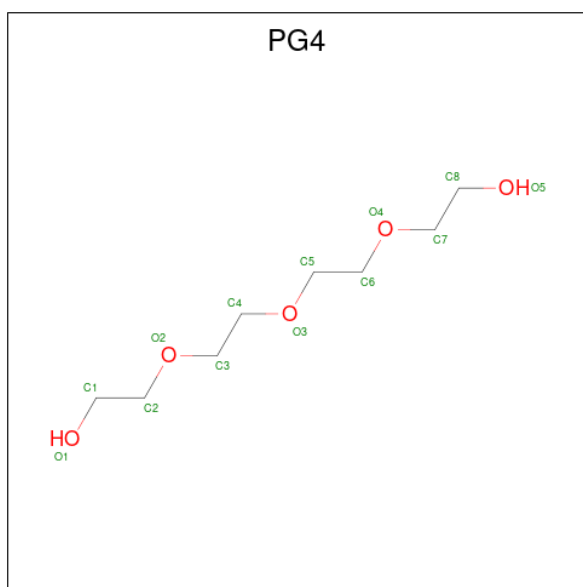
Mol	Chain	Residues	Atoms				ZeroOcc	AltConf
4	A	1	Total	C	H	O	0	0
			10	2	6	2		
4	A	1	Total	C	H	O	0	0
			10	2	6	2		
4	A	1	Total	C	H	O	0	0
			10	2	6	2		
4	B	1	Total	C	H	O	0	0
			10	2	6	2		
4	B	1	Total	C	H	O	0	0
			10	2	6	2		
4	C	1	Total	C	H	O	0	0
			10	2	6	2		

Continued on next page...

Continued from previous page...

Mol	Chain	Residues	Atoms				ZeroOcc	AltConf
4	C	1	Total	C	H	O	0	0
			10	2	6	2		
4	C	1	Total	C	H	O	0	0
			10	2	6	2		
4	D	1	Total	C	H	O	0	0
			10	2	6	2		

- Molecule 5 is TETRAETHYLENE GLYCOL (three-letter code: PG4) (formula: C₈H₁₈O₅).



Mol	Chain	Residues	Atoms				ZeroOcc	AltConf
5	A	1	Total	C	H	O	0	0
			31	8	18	5		

- Molecule 6 is DI(HYDROXYETHYL)ETHER (three-letter code: PEG) (formula: C₄H₁₀O₃).



Mol	Chain	Residues	Atoms				ZeroOcc	AltConf
6	A	1	Total	C	H	O	0	0
			17	4	10	3		
6	B	1	Total	C	H	O	0	0
			17	4	10	3		

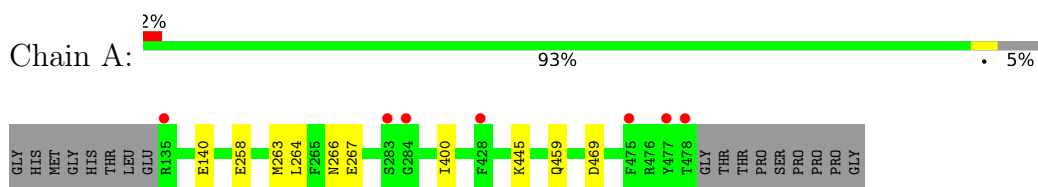
- Molecule 7 is water.

Mol	Chain	Residues	Atoms		ZeroOcc	AltConf
7	A	311	Total	O	0	0
			311	311		
7	B	316	Total	O	0	0
			316	316		
7	C	284	Total	O	0	0
			284	284		
7	D	287	Total	O	0	0
			287	287		

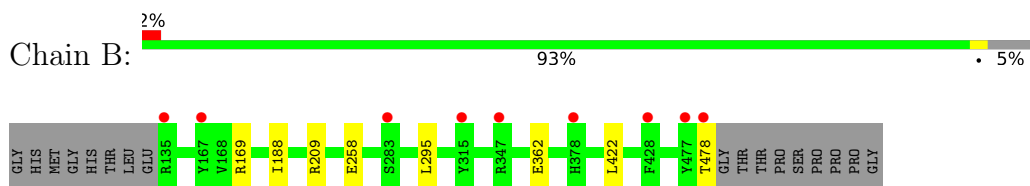
3 Residue-property plots i

These plots are drawn for all protein, RNA, DNA and oligosaccharide chains in the entry. The first graphic for a chain summarises the proportions of the various outlier classes displayed in the second graphic. The second graphic shows the sequence view annotated by issues in geometry and electron density. Residues are color-coded according to the number of geometric quality criteria for which they contain at least one outlier: green = 0, yellow = 1, orange = 2 and red = 3 or more. A red dot above a residue indicates a poor fit to the electron density ($RSRZ > 2$). Stretches of 2 or more consecutive residues without any outlier are shown as a green connector. Residues present in the sample, but not in the model, are shown in grey.

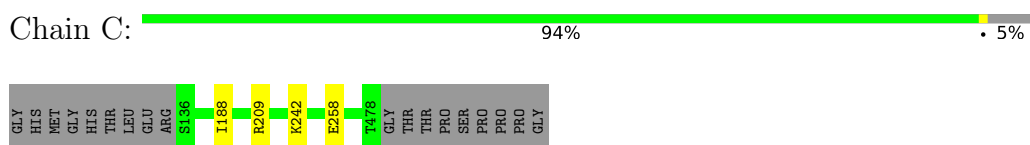
- Molecule 1: Histone-arginine methyltransferase CARM1



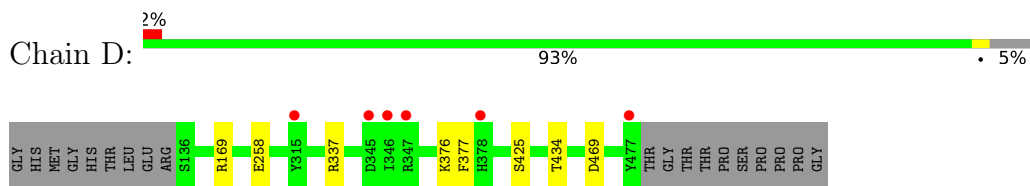
- Molecule 1: Histone-arginine methyltransferase CARM1



- Molecule 1: Histone-arginine methyltransferase CARM1



- Molecule 1: Histone-arginine methyltransferase CARM1



4 Data and refinement statistics

Property	Value	Source
Space group	P 21 21 2	Depositor
Cell constants a, b, c, α , β , γ	74.92Å 98.82Å 207.47Å 90.00° 90.00° 90.00°	Depositor
Resolution (Å)	45.92 – 2.10 45.92 – 2.10	Depositor EDS
% Data completeness (in resolution range)	99.7 (45.92-2.10) 99.8 (45.92-2.10)	Depositor EDS
R_{merge}	0.31	Depositor
R_{sym}	(Not available)	Depositor
$\langle I/\sigma(I) \rangle$ ¹	2.05 (at 2.10Å)	Xtrriage
Refinement program	PHENIX (dev_2386: ???)	Depositor
R, R_{free}	0.183 , 0.240 0.182 , 0.239	Depositor DCC
R_{free} test set	4483 reflections (4.95%)	wwPDB-VP
Wilson B-factor (Å ²)	23.0	Xtrriage
Anisotropy	0.672	Xtrriage
Bulk solvent k_{sol} (e/Å ³), B_{sol} (Å ²)	0.37 , 53.2	EDS
L-test for twinning ²	$\langle L \rangle = 0.49$, $\langle L^2 \rangle = 0.32$	Xtrriage
Estimated twinning fraction	No twinning to report.	Xtrriage
F_o, F_c correlation	0.94	EDS
Total number of atoms	23747	wwPDB-VP
Average B, all atoms (Å ²)	30.0	wwPDB-VP

Xtrriage's analysis on translational NCS is as follows: *The analyses of the Patterson function reveals a significant off-origin peak that is 36.13 % of the origin peak, indicating pseudo-translational symmetry. The chance of finding a peak of this or larger height randomly in a structure without pseudo-translational symmetry is equal to 5.2374e-04. The detected translational NCS is most likely also responsible for the elevated intensity ratio.*

¹Intensities estimated from amplitudes.

²Theoretical values of $\langle |L| \rangle$, $\langle L^2 \rangle$ for acentric reflections are 0.5, 0.333 respectively for untwinned datasets, and 0.375, 0.2 for perfectly twinned datasets.

5 Model quality [i](#)

5.1 Standard geometry [i](#)

Bond lengths and bond angles in the following residue types are not validated in this section: PEG, EDO, DXE, GJV, PG4

The Z score for a bond length (or angle) is the number of standard deviations the observed value is removed from the expected value. A bond length (or angle) with $|Z| > 5$ is considered an outlier worth inspection. RMSZ is the root-mean-square of all Z scores of the bond lengths (or angles).

Mol	Chain	Bond lengths		Bond angles	
		RMSZ	# Z >5	RMSZ	# Z >5
1	A	0.31	0/2934	0.49	0/3973
1	B	0.30	0/2900	0.47	0/3929
1	C	0.30	0/2854	0.47	0/3866
1	D	0.29	0/2845	0.46	0/3853
All	All	0.30	0/11533	0.47	0/15621

There are no bond length outliers.

There are no bond angle outliers.

There are no chirality outliers.

There are no planarity outliers.

5.2 Too-close contacts [i](#)

In the following table, the Non-H and H(model) columns list the number of non-hydrogen atoms and hydrogen atoms in the chain respectively. The H(added) column lists the number of hydrogen atoms added and optimized by MolProbity. The Clashes column lists the number of clashes within the asymmetric unit, whereas Symm-Clashes lists symmetry-related clashes.

Mol	Chain	Non-H	H(model)	H(added)	Clashes	Symm-Clashes
1	A	2810	2770	2710	6	0
1	B	2806	2760	2729	5	0
1	C	2770	2723	2703	2	0
1	D	2764	2715	2690	4	0
2	A	24	21	0	0	0
2	B	24	21	0	0	0
2	C	24	21	0	0	0
2	D	24	21	0	0	0
3	A	12	20	20	0	0

Continued on next page...

Continued from previous page...

Mol	Chain	Non-H	H(model)	H(added)	Clashes	Symm-Clashes
3	C	18	30	30	0	0
3	D	6	10	10	0	0
4	A	12	18	18	0	0
4	B	8	12	12	0	0
4	C	12	18	18	0	0
4	D	4	6	6	0	0
5	A	13	18	18	0	0
6	A	7	10	10	0	0
6	B	7	10	10	0	0
7	A	311	0	0	2	2
7	B	316	0	0	2	2
7	C	284	0	0	1	1
7	D	287	0	0	3	0
All	All	12543	11204	10984	17	3

The all-atom clashscore is defined as the number of clashes found per 1000 atoms (including hydrogen atoms). The all-atom clashscore for this structure is 1.

All (17) close contacts within the same asymmetric unit are listed below, sorted by their clash magnitude.

Atom-1	Atom-2	Interatomic distance (Å)	Clash overlap (Å)
1:B:362:GLU:OE1	7:B:601:HOH:O	2.14	0.65
1:D:469:ASP:OD2	7:D:601:HOH:O	2.14	0.65
1:A:469:ASP:OD1	7:A:601:HOH:O	2.15	0.64
1:A:400:ILE:O	7:A:602:HOH:O	2.17	0.60
1:A:459:GLN:OE1	1:A:459:GLN:N	2.42	0.52
1:D:376:LYS:NZ	7:D:610:HOH:O	2.42	0.52
1:C:188:ILE:HD11	1:C:209:ARG:NH1	2.24	0.52
1:C:242:LYS:NZ	7:C:612:HOH:O	2.41	0.51
1:D:337:ARG:NH1	7:D:604:HOH:O	2.36	0.50
1:B:422:LEU:O	7:B:602:HOH:O	2.21	0.44
1:B:188:ILE:HD11	1:B:209:ARG:NH1	2.33	0.43
1:A:263:MET:O	1:A:264:LEU:HB3	2.20	0.41
1:A:266:ASN:O	1:A:267:GLU:HB2	2.20	0.41
1:A:140:GLU:O	1:A:445:LYS:NZ	2.53	0.41
1:D:377:PHE:O	1:D:434:THR:HA	2.21	0.41

All (3) symmetry-related close contacts are listed below. The label for Atom-2 includes the symmetry operator and encoded unit-cell translations to be applied.

Atom-1	Atom-2	Interatomic distance (Å)	Clash overlap (Å)
7:A:762:HOH:O	7:B:794:HOH:O[4_556]	2.05	0.15
7:A:892:HOH:O	7:B:863:HOH:O[2_655]	2.12	0.08
7:C:741:HOH:O	7:C:741:HOH:O[2_655]	2.18	0.02

5.3 Torsion angles [i](#)

5.3.1 Protein backbone [i](#)

In the following table, the Percentiles column shows the percent Ramachandran outliers of the chain as a percentile score with respect to all X-ray entries followed by that with respect to entries of similar resolution.

The Analysed column shows the number of residues for which the backbone conformation was analysed, and the total number of residues.

Mol	Chain	Analysed	Favoured	Allowed	Outliers	Percentiles	
1	A	354/361 (98%)	343 (97%)	11 (3%)	0	100	100
1	B	348/361 (96%)	339 (97%)	9 (3%)	0	100	100
1	C	345/361 (96%)	333 (96%)	12 (4%)	0	100	100
1	D	342/361 (95%)	331 (97%)	11 (3%)	0	100	100
All	All	1389/1444 (96%)	1346 (97%)	43 (3%)	0	100	100

There are no Ramachandran outliers to report.

5.3.2 Protein sidechains [i](#)

In the following table, the Percentiles column shows the percent sidechain outliers of the chain as a percentile score with respect to all X-ray entries followed by that with respect to entries of similar resolution.

The Analysed column shows the number of residues for which the sidechain conformation was analysed, and the total number of residues.

Mol	Chain	Analysed	Rotameric	Outliers	Percentiles	
1	A	311/313 (99%)	310 (100%)	1 (0%)	92	95
1	B	306/313 (98%)	303 (99%)	3 (1%)	76	82
1	C	302/313 (96%)	301 (100%)	1 (0%)	92	95
1	D	301/313 (96%)	298 (99%)	3 (1%)	76	82
All	All	1220/1252 (97%)	1212 (99%)	8 (1%)	84	88

All (8) residues with a non-rotameric sidechain are listed below:

Mol	Chain	Res	Type
1	A	258	GLU
1	B	169	ARG
1	B	258	GLU
1	B	295	LEU
1	C	258	GLU
1	D	169	ARG
1	D	258	GLU
1	D	425	SER

Sometimes sidechains can be flipped to improve hydrogen bonding and reduce clashes. All (5) such sidechains are listed below:

Mol	Chain	Res	Type
1	B	221	GLN
1	B	231	ASN
1	C	160	GLN
1	C	378	HIS
1	C	424	GLN

5.3.3 RNA [i](#)

There are no RNA molecules in this entry.

5.4 Non-standard residues in protein, DNA, RNA chains [i](#)

There are no non-standard protein/DNA/RNA residues in this entry.

5.5 Carbohydrates [i](#)

There are no monosaccharides in this entry.

5.6 Ligand geometry [i](#)

22 ligands are modelled in this entry.

In the following table, the Counts columns list the number of bonds (or angles) for which Mogul statistics could be retrieved, the number of bonds (or angles) that are observed in the model and the number of bonds (or angles) that are defined in the Chemical Component Dictionary. The Link column lists molecule types, if any, to which the group is linked. The Z score for a bond length (or angle) is the number of standard deviations the observed value is removed from the

expected value. A bond length (or angle) with $|Z| > 2$ is considered an outlier worth inspection. RMSZ is the root-mean-square of all Z scores of the bond lengths (or angles).

Mol	Type	Chain	Res	Link	Bond lengths			Bond angles		
					Counts	RMSZ	$\# Z > 2$	Counts	RMSZ	$\# Z > 2$
6	PEG	A	508	-	6,6,6	0.49	0	5,5,5	0.47	0
2	GJV	A	501	-	23,26,26	0.57	0	23,37,37	0.89	2 (8%)
4	EDO	D	503	-	3,3,3	0.46	0	2,2,2	0.46	0
3	DXE	C	502	-	5,5,5	0.44	0	4,4,4	0.26	0
4	EDO	A	504	-	3,3,3	0.48	0	2,2,2	0.54	0
3	DXE	C	503	-	5,5,5	0.40	0	4,4,4	0.22	0
4	EDO	C	504	-	3,3,3	0.47	0	2,2,2	0.53	0
2	GJV	D	501	-	23,26,26	0.60	0	23,37,37	0.75	1 (4%)
4	EDO	A	506	-	3,3,3	0.46	0	2,2,2	0.54	0
2	GJV	B	501	-	23,26,26	0.60	0	23,37,37	0.77	1 (4%)
3	DXE	A	502	-	5,5,5	0.41	0	4,4,4	0.28	0
4	EDO	B	502	-	3,3,3	0.49	0	2,2,2	0.39	0
4	EDO	C	506	-	3,3,3	0.46	0	2,2,2	0.52	0
4	EDO	A	505	-	3,3,3	0.49	0	2,2,2	0.51	0
4	EDO	C	505	-	3,3,3	0.48	0	2,2,2	0.50	0
2	GJV	C	501	-	23,26,26	0.58	0	23,37,37	0.78	1 (4%)
3	DXE	A	503	-	5,5,5	0.44	0	4,4,4	0.21	0
3	DXE	D	502	-	5,5,5	0.43	0	4,4,4	0.23	0
6	PEG	B	504	-	6,6,6	0.49	0	5,5,5	0.35	0
3	DXE	C	507	-	5,5,5	0.42	0	4,4,4	0.26	0
4	EDO	B	503	-	3,3,3	0.47	0	2,2,2	0.46	0
5	PG4	A	507	-	12,12,12	0.54	0	11,11,11	0.35	0

In the following table, the Chirals column lists the number of chiral outliers, the number of chiral centers analysed, the number of these observed in the model and the number defined in the Chemical Component Dictionary. Similar counts are reported in the Torsion and Rings columns. '-' means no outliers of that kind were identified.

Mol	Type	Chain	Res	Link	Chirals	Torsions	Rings
6	PEG	A	508	-	-	3/4/4/4	-
2	GJV	A	501	-	-	1/7/27/27	0/3/3/3
4	EDO	D	503	-	-	0/1/1/1	-
3	DXE	C	502	-	-	1/3/3/3	-
4	EDO	A	504	-	-	0/1/1/1	-
3	DXE	C	503	-	-	1/3/3/3	-
4	EDO	C	504	-	-	0/1/1/1	-
2	GJV	D	501	-	-	1/7/27/27	0/3/3/3
4	EDO	A	506	-	-	1/1/1/1	-
2	GJV	B	501	-	-	0/7/27/27	0/3/3/3

Continued on next page...

Continued from previous page...

Mol	Type	Chain	Res	Link	Chirals	Torsions	Rings
3	DXE	A	502	-	-	1/3/3/3	-
4	EDO	B	502	-	-	1/1/1/1	-
4	EDO	C	506	-	-	1/1/1/1	-
4	EDO	A	505	-	-	0/1/1/1	-
4	EDO	C	505	-	-	0/1/1/1	-
2	GJV	C	501	-	-	0/7/27/27	0/3/3/3
3	DXE	A	503	-	-	1/3/3/3	-
3	DXE	D	502	-	-	2/3/3/3	-
6	PEG	B	504	-	-	2/4/4/4	-
3	DXE	C	507	-	-	2/3/3/3	-
4	EDO	B	503	-	-	0/1/1/1	-
5	PG4	A	507	-	-	3/10/10/10	-

There are no bond length outliers.

All (5) bond angle outliers are listed below:

Mol	Chain	Res	Type	Atoms	Z	Observed(°)	Ideal(°)
2	D	501	GJV	C5-C6-N6	2.28	123.82	120.35
2	A	501	GJV	C5-C6-N6	2.25	123.78	120.35
2	B	501	GJV	C5-C6-N6	2.24	123.75	120.35
2	C	501	GJV	C5-C6-N6	2.20	123.70	120.35
2	A	501	GJV	O4'-C4'-C5'	-2.12	106.45	109.25

There are no chirality outliers.

All (21) torsion outliers are listed below:

Mol	Chain	Res	Type	Atoms
2	D	501	GJV	C4'-C5'-C6'-C7'
2	A	501	GJV	C5'-C6'-C7'-N8'
5	A	507	PG4	O1-C1-C2-O2
4	A	506	EDO	O1-C1-C2-O2
3	D	502	DXE	O1-C2-C3-O2
6	A	508	PEG	O2-C3-C4-O4
4	B	502	EDO	O1-C1-C2-O2
3	C	507	DXE	C2-C3-O2-C4
6	A	508	PEG	O1-C1-C2-O2
6	B	504	PEG	O1-C1-C2-O2
6	B	504	PEG	C1-C2-O2-C3
6	A	508	PEG	C4-C3-O2-C2
3	C	502	DXE	C2-C3-O2-C4

Continued on next page...

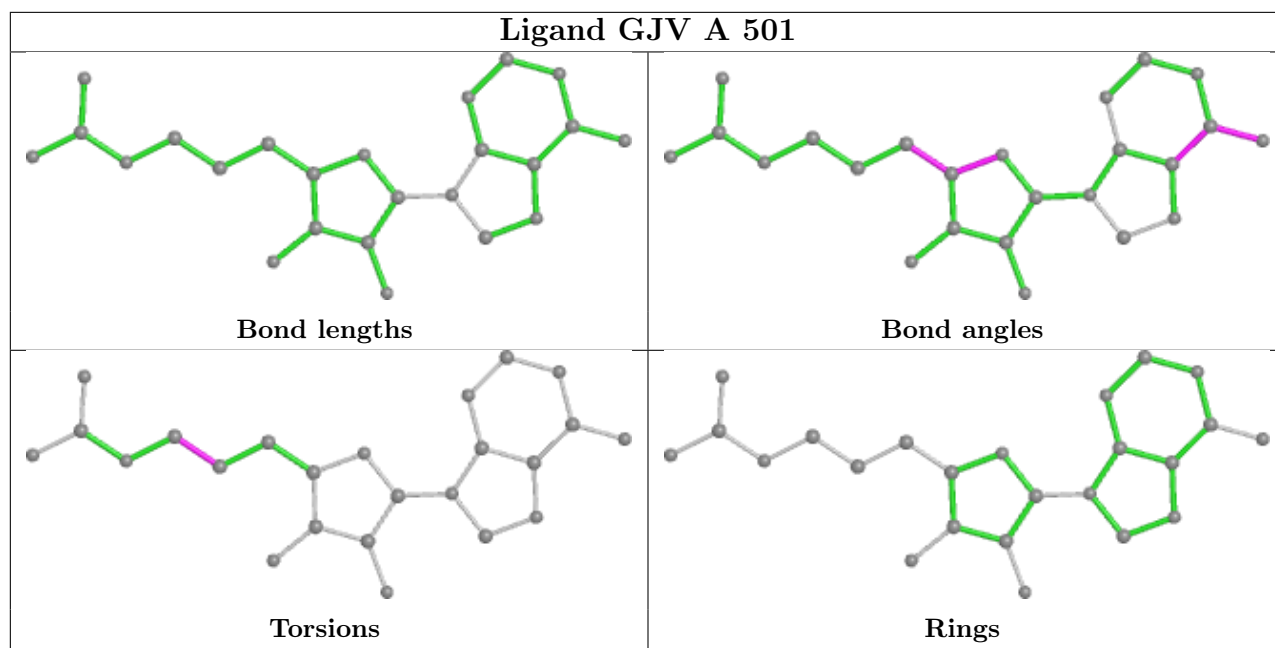
Continued from previous page...

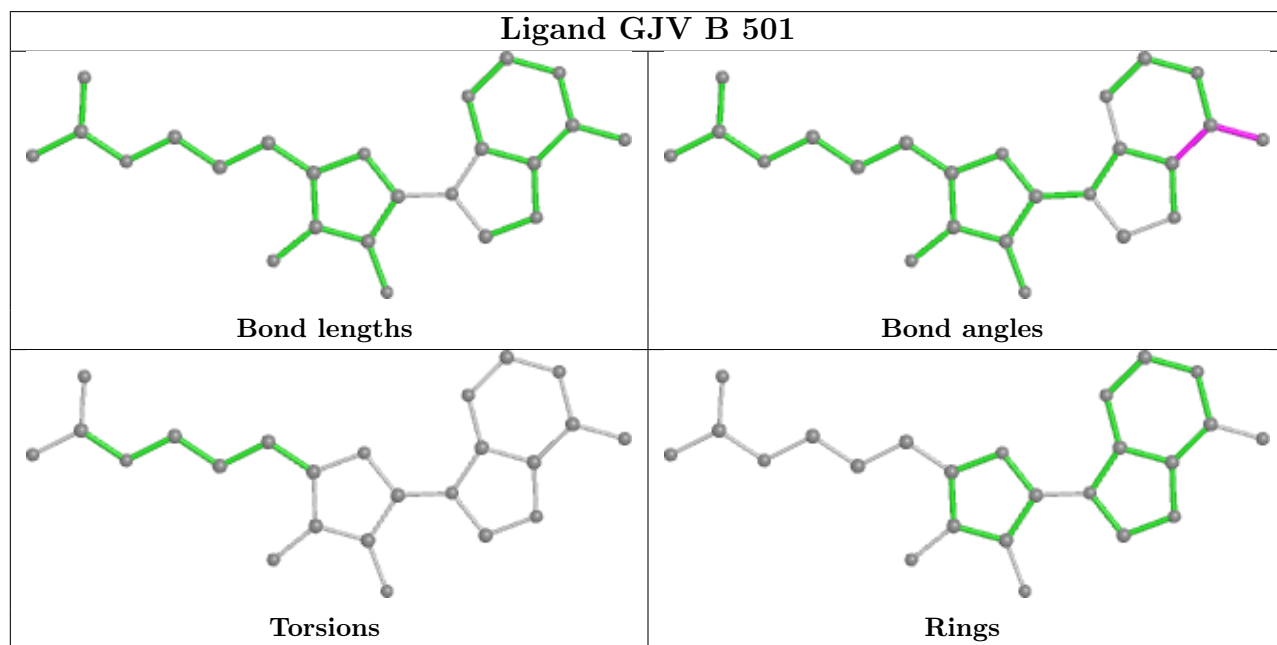
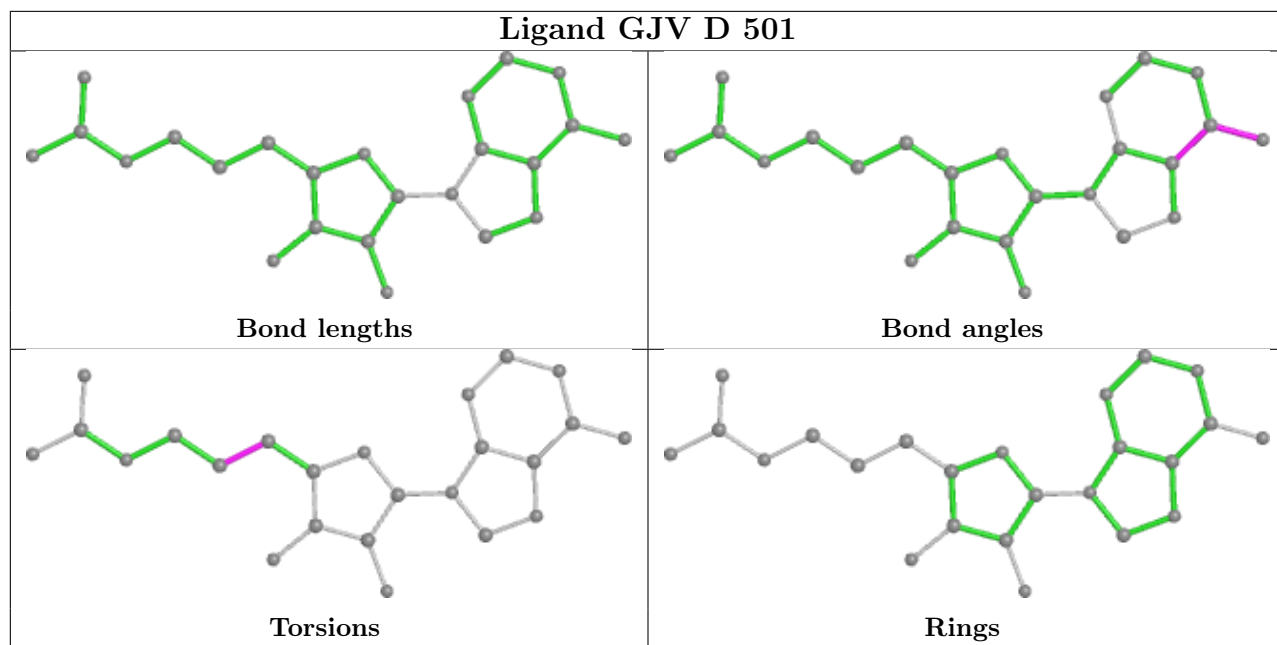
Mol	Chain	Res	Type	Atoms
3	A	503	DXE	C3-C2-O1-C1
3	C	503	DXE	O1-C2-C3-O2
5	A	507	PG4	C1-C2-O2-C3
3	D	502	DXE	C3-C2-O1-C1
4	C	506	EDO	O1-C1-C2-O2
3	C	507	DXE	O1-C2-C3-O2
5	A	507	PG4	O2-C3-C4-O3
3	A	502	DXE	O1-C2-C3-O2

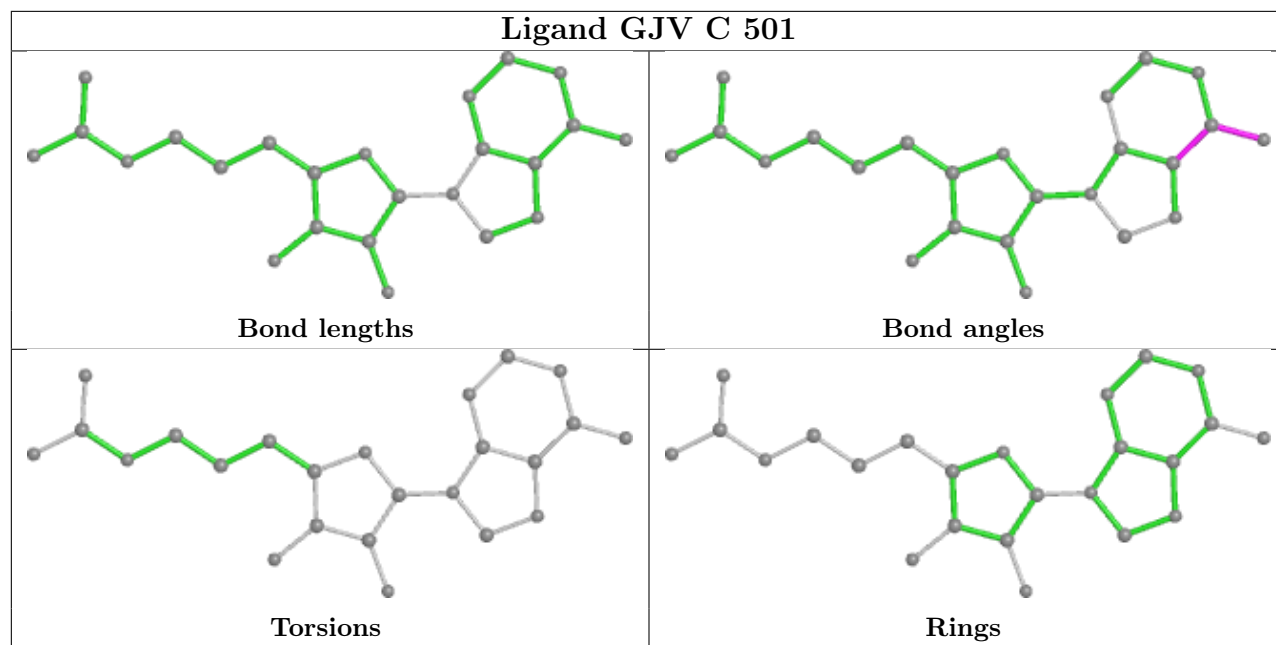
There are no ring outliers.

No monomer is involved in short contacts.

The following is a two-dimensional graphical depiction of Mogul quality analysis of bond lengths, bond angles, torsion angles, and ring geometry for all instances of the Ligand of Interest. In addition, ligands with molecular weight > 250 and outliers as shown on the validation Tables will also be included. For torsion angles, if less than 5% of the Mogul distribution of torsion angles is within 10 degrees of the torsion angle in question, then that torsion angle is considered an outlier. Any bond that is central to one or more torsion angles identified as an outlier by Mogul will be highlighted in the graph. For rings, the root-mean-square deviation (RMSD) between the ring in question and similar rings identified by Mogul is calculated over all ring torsion angles. If the average RMSD is greater than 60 degrees and the minimal RMSD between the ring in question and any Mogul-identified rings is also greater than 60 degrees, then that ring is considered an outlier. The outliers are highlighted in purple. The color gray indicates Mogul did not find sufficient equivalents in the CSD to analyse the geometry.







5.7 Other polymers [i](#)

There are no such residues in this entry.

5.8 Polymer linkage issues [i](#)

There are no chain breaks in this entry.

6 Fit of model and data [i](#)

6.1 Protein, DNA and RNA chains [i](#)

In the following table, the column labelled ‘#RSRZ > 2’ contains the number (and percentage) of RSRZ outliers, followed by percent RSRZ outliers for the chain as percentile scores relative to all X-ray entries and entries of similar resolution. The OWAB column contains the minimum, median, 95th percentile and maximum values of the occupancy-weighted average B-factor per residue. The column labelled ‘Q < 0.9’ lists the number of (and percentage) of residues with an average occupancy less than 0.9.

Mol	Chain	Analysed	<RSRZ>	#RSRZ>2	OWAB(Å ²)	Q<0.9
1	A	344/361 (95%)	0.08	7 (2%) 65 69	8, 21, 40, 76	0
1	B	344/361 (95%)	0.17	9 (2%) 56 61	10, 25, 43, 67	0
1	C	343/361 (95%)	0.13	0 100 100	12, 27, 47, 69	0
1	D	342/361 (94%)	0.15	6 (1%) 68 72	16, 27, 42, 60	0
All	All	1373/1444 (95%)	0.13	22 (1%) 72 75	8, 25, 43, 76	0

All (22) RSRZ outliers are listed below:

Mol	Chain	Res	Type	RSRZ
1	B	478	THR	6.5
1	D	477[A]	TYR	6.1
1	A	135	ARG	5.7
1	B	315	TYR	3.7
1	A	477	TYR	3.5
1	A	478	THR	3.4
1	D	315	TYR	3.2
1	B	477[A]	TYR	3.1
1	D	347	ARG	2.9
1	B	167[A]	TYR	2.8
1	B	135	ARG	2.7
1	B	428	PHE	2.7
1	A	283	SER	2.7
1	B	347	ARG	2.6
1	D	378	HIS	2.6
1	A	475[A]	PHE	2.6
1	B	283	SER	2.2
1	B	378	HIS	2.1
1	A	284	GLY	2.1
1	D	346	ILE	2.1
1	D	345	ASP	2.1
1	A	428	PHE	2.0

6.2 Non-standard residues in protein, DNA, RNA chains [i](#)

There are no non-standard protein/DNA/RNA residues in this entry.

6.3 Carbohydrates [i](#)

There are no monosaccharides in this entry.

6.4 Ligands [i](#)

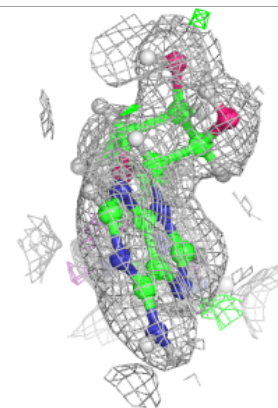
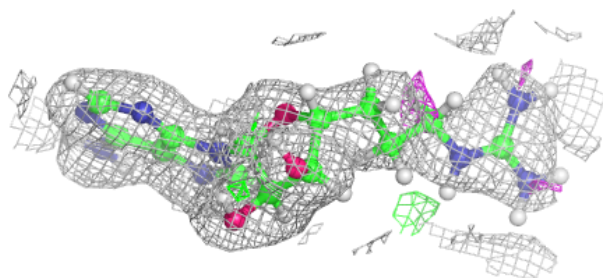
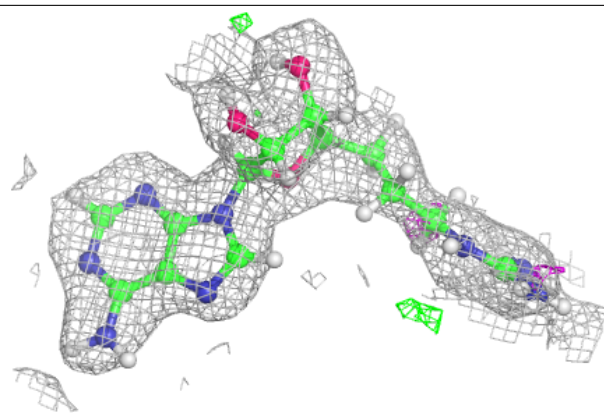
In the following table, the Atoms column lists the number of modelled atoms in the group and the number defined in the chemical component dictionary. The B-factors column lists the minimum, median, 95th percentile and maximum values of B factors of atoms in the group. The column labelled 'Q< 0.9' lists the number of atoms with occupancy less than 0.9.

Mol	Type	Chain	Res	Atoms	RSCC	RSR	B-factors(Å ²)	Q<0.9
6	PEG	A	508	7/7	0.70	0.24	44,53,63,63	0
5	PG4	A	507	13/13	0.71	0.28	39,50,67,67	0
4	EDO	A	505	4/4	0.72	0.17	46,56,59,60	0
4	EDO	C	505	4/4	0.74	0.20	43,51,54,57	0
3	DXE	C	502	6/6	0.77	0.26	37,44,47,47	0
3	DXE	A	503	6/6	0.78	0.17	35,43,50,50	0
3	DXE	D	502	6/6	0.79	0.16	36,47,57,57	0
4	EDO	C	506	4/4	0.80	0.19	45,54,55,58	0
3	DXE	C	503	6/6	0.81	0.18	43,53,55,55	0
6	PEG	B	504	7/7	0.81	0.25	26,33,41,45	0
4	EDO	D	503	4/4	0.82	0.21	51,61,62,64	0
3	DXE	C	507	6/6	0.84	0.26	33,39,41,41	0
4	EDO	C	504	4/4	0.85	0.25	44,53,54,55	0
4	EDO	B	503	4/4	0.86	0.17	36,44,45,46	0
4	EDO	B	502	4/4	0.88	0.14	44,53,56,57	0
3	DXE	A	502	6/6	0.89	0.19	34,41,49,49	0
4	EDO	A	506	4/4	0.90	0.14	34,41,44,44	0
4	EDO	A	504	4/4	0.91	0.12	41,49,51,52	0
2	GJV	C	501	24/24	0.93	0.14	18,23,32,37	0
2	GJV	A	501	24/24	0.95	0.12	14,24,38,44	0
2	GJV	D	501	24/24	0.95	0.13	14,21,38,39	0
2	GJV	B	501	24/24	0.96	0.14	10,19,42,42	0

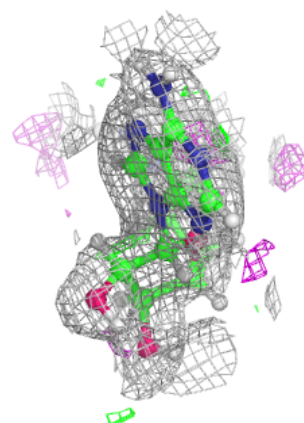
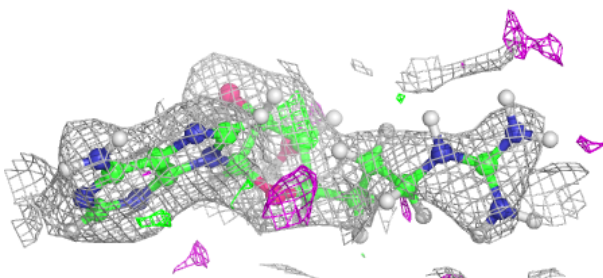
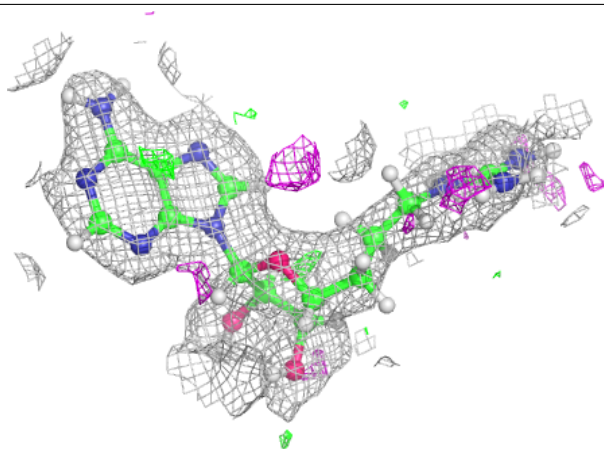
The following is a graphical depiction of the model fit to experimental electron density of all instances of the Ligand of Interest. In addition, ligands with molecular weight > 250 and outliers as shown on the geometry validation Tables will also be included. Each fit is shown from different orientation to approximate a three-dimensional view.

Electron density around GJV C 501:

$2mF_o-DF_c$ (at 0.7 rmsd) in gray
 mF_o-DF_c (at 3 rmsd) in purple (negative)
and green (positive)

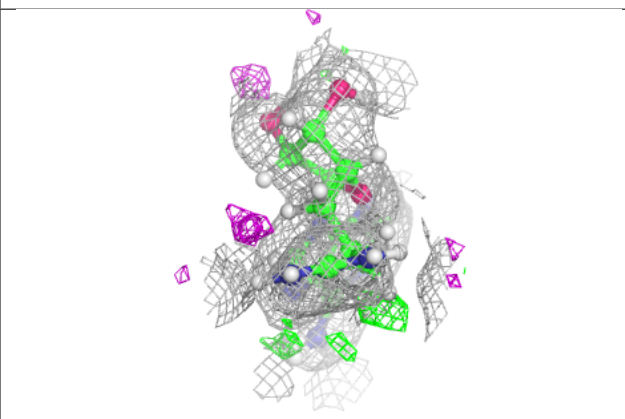
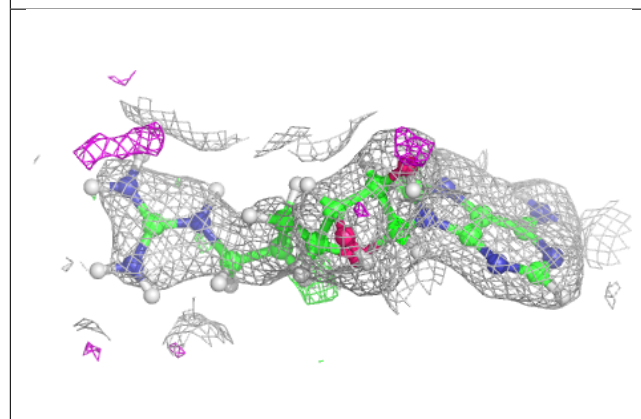
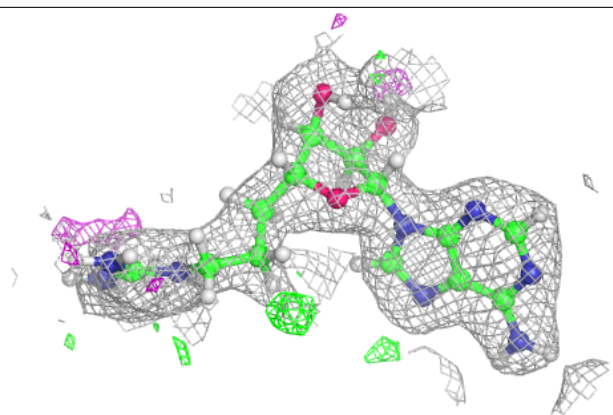
**Electron density around GJV A 501:**

$2mF_o-DF_c$ (at 0.7 rmsd) in gray
 mF_o-DF_c (at 3 rmsd) in purple (negative)
and green (positive)

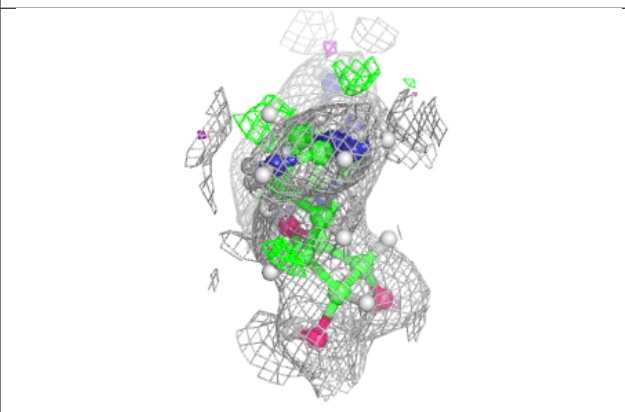
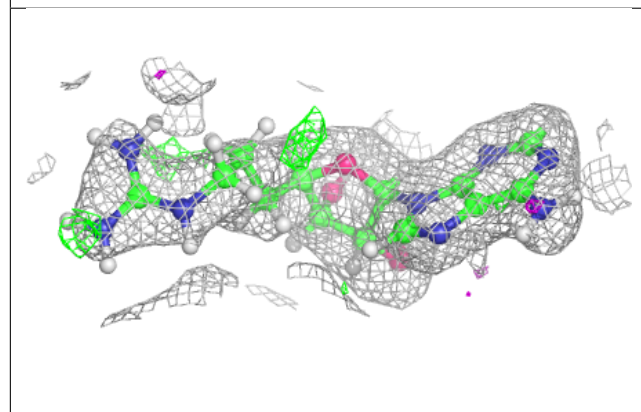
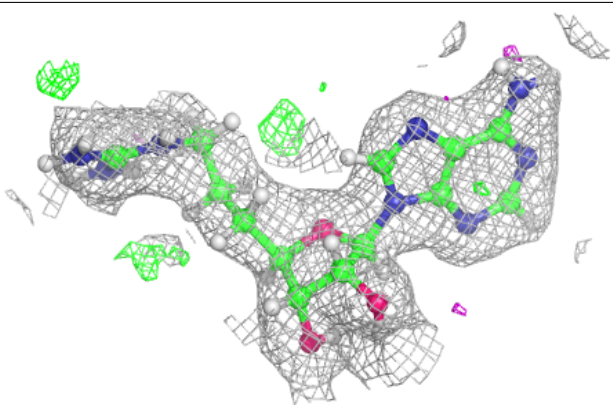


Electron density around GJV D 501:

$2mF_o-DF_c$ (at 0.7 rmsd) in gray
 mF_o-DF_c (at 3 rmsd) in purple (negative)
and green (positive)

**Electron density around GJV B 501:**

$2mF_o-DF_c$ (at 0.7 rmsd) in gray
 mF_o-DF_c (at 3 rmsd) in purple (negative)
and green (positive)



6.5 Other polymers [i](#)

There are no such residues in this entry.