



Full wwPDB X-ray Structure Validation Report ⓘ

Aug 6, 2023 – 09:42 PM EDT

PDB ID : 1K7S
Title : FhuD complexed with albomycin-delta 2
Authors : Clarke, T.E.; Braun, V.; Winkelmann, G.; Tari, L.W.; Vogel, H.J.
Deposited on : 2001-10-21
Resolution : 2.60 Å(reported)

This is a Full wwPDB X-ray Structure Validation Report for a publicly released PDB entry.

We welcome your comments at validation@mail.wwpdb.org

A user guide is available at

<https://www.wwpdb.org/validation/2017/XrayValidationReportHelp>

with specific help available everywhere you see the ⓘ symbol.

The types of validation reports are described at

<http://www.wwpdb.org/validation/2017/FAQs#types>.

The following versions of software and data (see [references ⓘ](#)) were used in the production of this report:

MolProbity : 4.02b-467
Mogul : 1.8.5 (274361), CSD as541be (2020)
Xtrriage (Phenix) : **NOT EXECUTED**
EDS : **NOT EXECUTED**
buster-report : 1.1.7 (2018)
Percentile statistics : 20191225.v01 (using entries in the PDB archive December 25th 2019)
Ideal geometry (proteins) : Engh & Huber (2001)
Ideal geometry (DNA, RNA) : Parkinson et al. (1996)
Validation Pipeline (wwPDB-VP) : 2.35

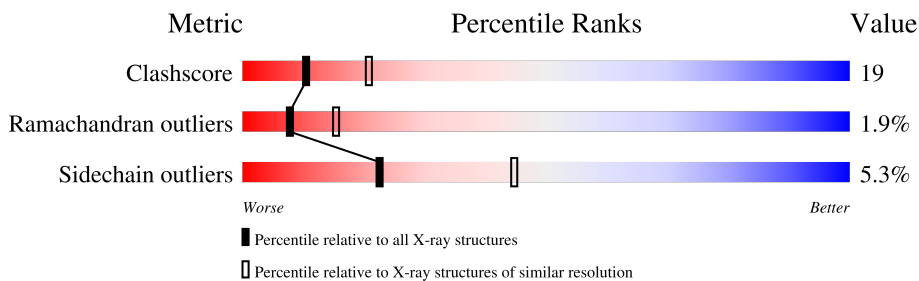
1 Overall quality at a glance

The following experimental techniques were used to determine the structure:

X-RAY DIFFRACTION

The reported resolution of this entry is 2.60 Å.


Percentile scores (ranging between 0-100) for global validation metrics of the entry are shown in the following graphic. The table shows the number of entries on which the scores are based.



Metric	Whole archive (#Entries)	Similar resolution (#Entries, resolution range(Å))
Clashscore	141614	3518 (2.60-2.60)
Ramachandran outliers	138981	3455 (2.60-2.60)
Sidechain outliers	138945	3455 (2.60-2.60)

The table below summarises the geometric issues observed across the polymeric chains and their fit to the electron density. The red, orange, yellow and green segments of the lower bar indicate the fraction of residues that contain outliers for ≥ 3 , 2, 1 and 0 types of geometric quality criteria respectively. A grey segment represents the fraction of residues that are not modelled. The numeric value for each fraction is indicated below the corresponding segment, with a dot representing fractions $\leq 5\%$.

Note EDS was not executed.

Mol	Chain	Length	Quality of chain
1	N	265	 66% 30% ...

The following table lists non-polymeric compounds, carbohydrate monomers and non-standard residues in protein, DNA, RNA chains that are outliers for geometric or electron-density-fit criteria:

Mol	Type	Chain	Res	Chirality	Geometry	Clashes	Electron density
2	ALB	N	500	X	-	-	-

2 Entry composition [i](#)

There are 3 unique types of molecules in this entry. The entry contains 2092 atoms, of which 0 are hydrogens and 0 are deuteriums.

In the tables below, the ZeroOcc column contains the number of atoms modelled with zero occupancy, the AltConf column contains the number of residues with at least one atom in alternate conformation and the Trace column contains the number of residues modelled with at most 2 atoms.

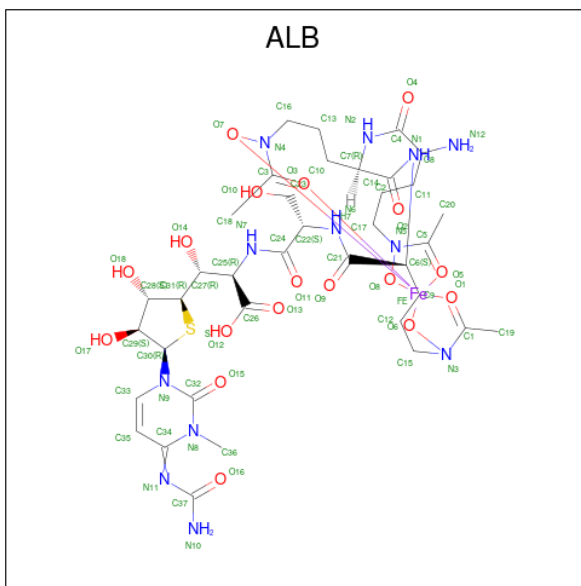
- Molecule 1 is a protein called Ferrichrome-binding periplasmic protein.

Mol	Chain	Residues	Atoms					ZeroOcc	AltConf	Trace
			Total	C	N	O	S			
1	N	262	2013	1302	333	366	12	0	0	0

There is a discrepancy between the modelled and reference sequences:

Chain	Residue	Modelled	Actual	Comment	Reference
N	32	GLY	-	expression tag	UNP P07822

- Molecule 2 is DELTA-2-ALBOMYCIN A1 (three-letter code: ALB) (formula: $C_{37}H_{57}FeN_{12}O_{18}S$).



Mol	Chain	Residues	Atoms					ZeroOcc	AltConf
			Total	C	Fe	N	O		
2	N	1	41	23	1	7	10	0	0

- Molecule 3 is water.

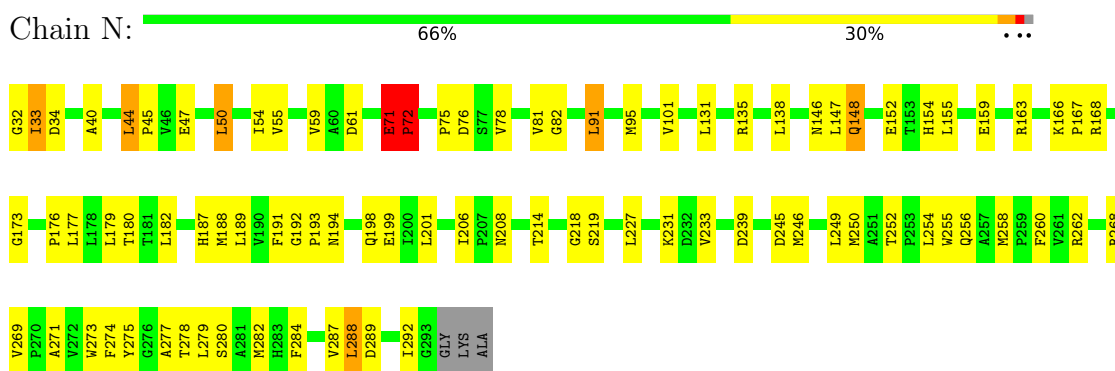
Mol	Chain	Residues	Atoms		ZeroOcc	AltConf
3	N	38	Total 38	O 38	0	0

3 Residue-property plots

These plots are drawn for all protein, RNA, DNA and oligosaccharide chains in the entry. The first graphic for a chain summarises the proportions of the various outlier classes displayed in the second graphic. The second graphic shows the sequence view annotated by issues in geometry. Residues are color-coded according to the number of geometric quality criteria for which they contain at least one outlier: green = 0, yellow = 1, orange = 2 and red = 3 or more. Stretches of 2 or more consecutive residues without any outlier are shown as a green connector. Residues present in the sample, but not in the model, are shown in grey.

Note EDS was not executed.

- Molecule 1: Ferrichrome-binding periplasmic protein



4 Data and refinement statistics

Xtrriage (Phenix) and EDS were not executed - this section is therefore incomplete.

Property	Value	Source
Space group	P 63	Depositor
Cell constants a, b, c, α , β , γ	85.57Å 85.57Å 91.60Å 90.00° 90.00° 120.00°	Depositor
Resolution (Å)	30.00 – 2.60	Depositor
% Data completeness (in resolution range)	90.2 (30.00-2.60)	Depositor
R_{merge}	0.09	Depositor
R_{sym}	(Not available)	Depositor
Refinement program	CNS	Depositor
R, R_{free}	0.194 , 0.243	Depositor
Estimated twinning fraction	No twinning to report.	Xtrriage
Total number of atoms	2092	wwPDB-VP
Average B, all atoms (Å ²)	42.0	wwPDB-VP

5 Model quality [i](#)

5.1 Standard geometry [i](#)

Bond lengths and bond angles in the following residue types are not validated in this section: ALB

The Z score for a bond length (or angle) is the number of standard deviations the observed value is removed from the expected value. A bond length (or angle) with $|Z| > 5$ is considered an outlier worth inspection. RMSZ is the root-mean-square of all Z scores of the bond lengths (or angles).

Mol	Chain	Bond lengths		Bond angles	
		RMSZ	# Z >5	RMSZ	# Z >5
1	N	0.39	0/2070	0.63	0/2832

There are no bond length outliers.

There are no bond angle outliers.

There are no chirality outliers.

There are no planarity outliers.

5.2 Too-close contacts [i](#)

In the following table, the Non-H and H(model) columns list the number of non-hydrogen atoms and hydrogen atoms in the chain respectively. The H(added) column lists the number of hydrogen atoms added and optimized by MolProbity. The Clashes column lists the number of clashes within the asymmetric unit, whereas Symm-Clashes lists symmetry-related clashes.

Mol	Chain	Non-H	H(model)	H(added)	Clashes	Symm-Clashes
1	N	2013	0	1943	74	1
2	N	41	0	35	2	0
3	N	38	0	0	0	0
All	All	2092	0	1978	75	1

The all-atom clashscore is defined as the number of clashes found per 1000 atoms (including hydrogen atoms). The all-atom clashscore for this structure is 19.

All (75) close contacts within the same asymmetric unit are listed below, sorted by their clash magnitude.

Atom-1	Atom-2	Interatomic distance (Å)	Clash overlap (Å)
1:N:71:GLU:HB3	1:N:72:PRO:HD2	1.31	1.11

Continued on next page...

Continued from previous page...

Atom-1	Atom-2	Interatomic distance (Å)	Clash overlap (Å)
1:N:71:GLU:HB3	1:N:72:PRO:CD	2.10	0.81
1:N:198:GLN:NE2	1:N:208:ASN:HD22	1.83	0.77
1:N:33:ILE:CG2	1:N:34:ASP:H	1.98	0.76
1:N:148:GLN:O	1:N:152:GLU:HG3	1.89	0.73
1:N:71:GLU:O	1:N:72:PRO:C	2.24	0.72
1:N:33:ILE:HG23	1:N:34:ASP:N	2.05	0.71
1:N:54:ILE:HD11	1:N:147:LEU:CD1	2.20	0.71
1:N:33:ILE:CG2	1:N:34:ASP:N	2.54	0.70
1:N:91:LEU:HD22	1:N:95:MET:HG3	1.72	0.70
1:N:176:PRO:HG2	1:N:233:VAL:HG12	1.75	0.69
1:N:44:LEU:HB3	1:N:45:PRO:CD	2.22	0.69
1:N:50:LEU:HD23	1:N:72:PRO:HB3	1.73	0.68
1:N:44:LEU:HB3	1:N:45:PRO:HD3	1.76	0.67
1:N:198:GLN:HE22	1:N:208:ASN:HD22	1.42	0.66
1:N:71:GLU:CB	1:N:72:PRO:HD2	2.18	0.66
1:N:71:GLU:HA	1:N:71:GLU:OE2	1.95	0.66
1:N:201:LEU:HD22	1:N:206:ILE:HB	1.79	0.65
1:N:33:ILE:HG23	1:N:34:ASP:H	1.64	0.62
1:N:61:ASP:N	1:N:82:GLY:O	2.34	0.61
1:N:154:HIS:HE1	1:N:278:THR:OG1	1.83	0.61
1:N:148:GLN:H	1:N:148:GLN:NE2	1.98	0.61
1:N:71:GLU:CB	1:N:72:PRO:CD	2.78	0.61
1:N:154:HIS:CE1	1:N:278:THR:OG1	2.55	0.60
1:N:279:LEU:HD23	1:N:282:MET:CE	2.37	0.55
1:N:131:LEU:HD12	1:N:199:GLU:HB3	1.88	0.54
1:N:75:PRO:HG2	1:N:78:VAL:HG23	1.90	0.52
1:N:246:MET:HG3	1:N:268:ARG:NH1	2.25	0.52
1:N:33:ILE:HG22	1:N:34:ASP:H	1.71	0.50
1:N:47:GLU:CD	1:N:277:ALA:H	2.14	0.50
1:N:250:MET:HA	1:N:255:TRP:CD1	2.46	0.50
1:N:198:GLN:HE22	1:N:208:ASN:HB2	1.76	0.50
1:N:273:TRP:CE3	1:N:273:TRP:HA	2.47	0.50
1:N:246:MET:CE	1:N:268:ARG:HD3	2.42	0.49
1:N:246:MET:HG3	1:N:268:ARG:HH11	1.77	0.49
1:N:255:TRP:O	1:N:258:MET:HB2	2.14	0.48
1:N:54:ILE:HD11	1:N:147:LEU:HD11	1.94	0.48
1:N:252:THR:O	1:N:256:GLN:HG3	2.14	0.48
1:N:180:THR:HA	1:N:189:LEU:O	2.13	0.47
1:N:44:LEU:N	1:N:45:PRO:HD2	2.29	0.47
1:N:239:ASP:O	1:N:271:ALA:HB2	2.15	0.47
1:N:166:LYS:N	1:N:167:PRO:HD2	2.30	0.47

Continued on next page...

Continued from previous page...

Atom-1	Atom-2	Interatomic distance (Å)	Clash overlap (Å)
1:N:135:ARG:HG2	1:N:155:LEU:HD22	1.97	0.46
1:N:193:PRO:O	1:N:198:GLN:HG2	2.16	0.46
1:N:168:ARG:HD3	1:N:289:ASP:OD2	2.15	0.45
1:N:279:LEU:HD23	1:N:282:MET:HE3	1.99	0.45
2:N:500:ALB:O7	2:N:500:ALB:H101	2.18	0.44
1:N:59:VAL:C	1:N:81:VAL:HG22	2.38	0.43
1:N:269:VAL:HB	1:N:287:VAL:CG1	2.48	0.43
1:N:159:GLU:OE1	1:N:163:ARG:NH2	2.51	0.43
1:N:273:TRP:HA	1:N:273:TRP:HE3	1.84	0.43
1:N:55:VAL:HG13	1:N:75:PRO:HG3	2.01	0.43
1:N:192:GLY:HA3	1:N:214:THR:HG21	2.01	0.42
1:N:40:ALA:HA	1:N:101:VAL:HG23	2.00	0.42
1:N:249:LEU:HD11	1:N:255:TRP:CE3	2.54	0.42
1:N:155:LEU:O	1:N:159:GLU:HG3	2.19	0.42
1:N:288:LEU:CD2	1:N:292:ILE:HG12	2.49	0.42
1:N:131:LEU:HD23	1:N:131:LEU:HA	1.92	0.42
1:N:182:LEU:HD12	1:N:187:HIS:O	2.19	0.42
1:N:146:ASN:HA	1:N:148:GLN:OE1	2.20	0.42
1:N:32:GLY:O	1:N:33:ILE:C	2.58	0.41
1:N:54:ILE:N	1:N:54:ILE:HD12	2.35	0.41
1:N:91:LEU:CD2	1:N:95:MET:HG3	2.48	0.41
1:N:284:PHE:O	1:N:288:LEU:HB2	2.20	0.41
1:N:188:MET:HG3	1:N:227:LEU:HD11	2.02	0.41
1:N:191:PHE:CD2	1:N:219:SER:HB3	2.55	0.41
1:N:258:MET:HG3	1:N:260:PHE:CE2	2.55	0.41
1:N:47:GLU:OE1	1:N:280:SER:N	2.51	0.41
1:N:194:ASN:OD1	1:N:218:GLY:HA2	2.21	0.41
1:N:275:TYR:CZ	2:N:500:ALB:H102	2.55	0.41
1:N:154:HIS:HE1	1:N:278:THR:CB	2.33	0.41
1:N:269:VAL:HB	1:N:287:VAL:HG13	2.02	0.40
1:N:71:GLU:OE2	1:N:71:GLU:CA	2.68	0.40
1:N:239:ASP:OD1	1:N:268:ARG:HD2	2.22	0.40
1:N:177:LEU:HD21	1:N:179:LEU:HD21	2.04	0.40

All (1) symmetry-related close contacts are listed below. The label for Atom-2 includes the symmetry operator and encoded unit-cell translations to be applied.

Atom-1	Atom-2	Interatomic distance (Å)	Clash overlap (Å)
1:N:76:ASP:O	1:N:262:ARG:NH2[6_554]	2.03	0.17

5.3 Torsion angles [i](#)

5.3.1 Protein backbone [i](#)

In the following table, the Percentiles column shows the percent Ramachandran outliers of the chain as a percentile score with respect to all X-ray entries followed by that with respect to entries of similar resolution.

The Analysed column shows the number of residues for which the backbone conformation was analysed, and the total number of residues.

Mol	Chain	Analysed	Favoured	Allowed	Outliers	Percentiles
1	N	260/265 (98%)	242 (93%)	13 (5%)	5 (2%)	8 15

All (5) Ramachandran outliers are listed below:

Mol	Chain	Res	Type
1	N	33	ILE
1	N	71	GLU
1	N	72	PRO
1	N	173	GLY
1	N	231	LYS

5.3.2 Protein sidechains [i](#)

In the following table, the Percentiles column shows the percent sidechain outliers of the chain as a percentile score with respect to all X-ray entries followed by that with respect to entries of similar resolution.

The Analysed column shows the number of residues for which the sidechain conformation was analysed, and the total number of residues.

Mol	Chain	Analysed	Rotameric	Outliers	Percentiles
1	N	208/221 (94%)	197 (95%)	11 (5%)	22 45

All (11) residues with a non-rotameric sidechain are listed below:

Mol	Chain	Res	Type
1	N	44	LEU
1	N	50	LEU
1	N	71	GLU
1	N	72	PRO
1	N	91	LEU
1	N	138	LEU

Continued on next page...

Continued from previous page...

Mol	Chain	Res	Type
1	N	148	GLN
1	N	245	ASP
1	N	254	LEU
1	N	274	PHE
1	N	288	LEU

Sometimes sidechains can be flipped to improve hydrogen bonding and reduce clashes. All (5) such sidechains are listed below:

Mol	Chain	Res	Type
1	N	148	GLN
1	N	154	HIS
1	N	198	GLN
1	N	240	HIS
1	N	256	GLN

5.3.3 RNA [i](#)

There are no RNA molecules in this entry.

5.4 Non-standard residues in protein, DNA, RNA chains [i](#)

There are no non-standard protein/DNA/RNA residues in this entry.

5.5 Carbohydrates [i](#)

There are no monosaccharides in this entry.

5.6 Ligand geometry [i](#)

1 ligand is modelled in this entry.

In the following table, the Counts columns list the number of bonds (or angles) for which Mogul statistics could be retrieved, the number of bonds (or angles) that are observed in the model and the number of bonds (or angles) that are defined in the Chemical Component Dictionary. The Link column lists molecule types, if any, to which the group is linked. The Z score for a bond length (or angle) is the number of standard deviations the observed value is removed from the expected value. A bond length (or angle) with $|Z| > 2$ is considered an outlier worth inspection. RMSZ is the root-mean-square of all Z scores of the bond lengths (or angles).

Mol	Type	Chain	Res	Link	Bond lengths			Bond angles		
					Counts	RMSZ	# Z > 2	Counts	RMSZ	# Z > 2
2	ALB	N	500	-	45,45,75	0.59	0	47,71,117	1.14	4 (8%)

In the following table, the Chirals column lists the number of chiral outliers, the number of chiral centers analysed, the number of these observed in the model and the number defined in the Chemical Component Dictionary. Similar counts are reported in the Torsion and Rings columns. '-' means no outliers of that kind were identified.

Mol	Type	Chain	Res	Link	Chirals	Torsions	Rings
2	ALB	N	500	-	2/2/13/27	3/41/96/142	0/3/5/7

There are no bond length outliers.

All (4) bond angle outliers are listed below:

Mol	Chain	Res	Type	Atoms	Z	Observed(°)	Ideal(°)
2	N	500	ALB	O3-C3-C18	-4.24	111.30	119.49
2	N	500	ALB	C18-C3-N4	4.18	130.72	121.73
2	N	500	ALB	C19-C1-N3	2.87	127.91	121.73
2	N	500	ALB	O1-C1-C19	-2.49	114.68	119.49

All (2) chirality outliers are listed below:

Mol	Chain	Res	Type	Atom
2	N	500	ALB	C7
2	N	500	ALB	C8

All (3) torsion outliers are listed below:

Mol	Chain	Res	Type	Atoms
2	N	500	ALB	N2-C4-C8-C11
2	N	500	ALB	O4-C4-C8-C11
2	N	500	ALB	C7-C10-C13-C16

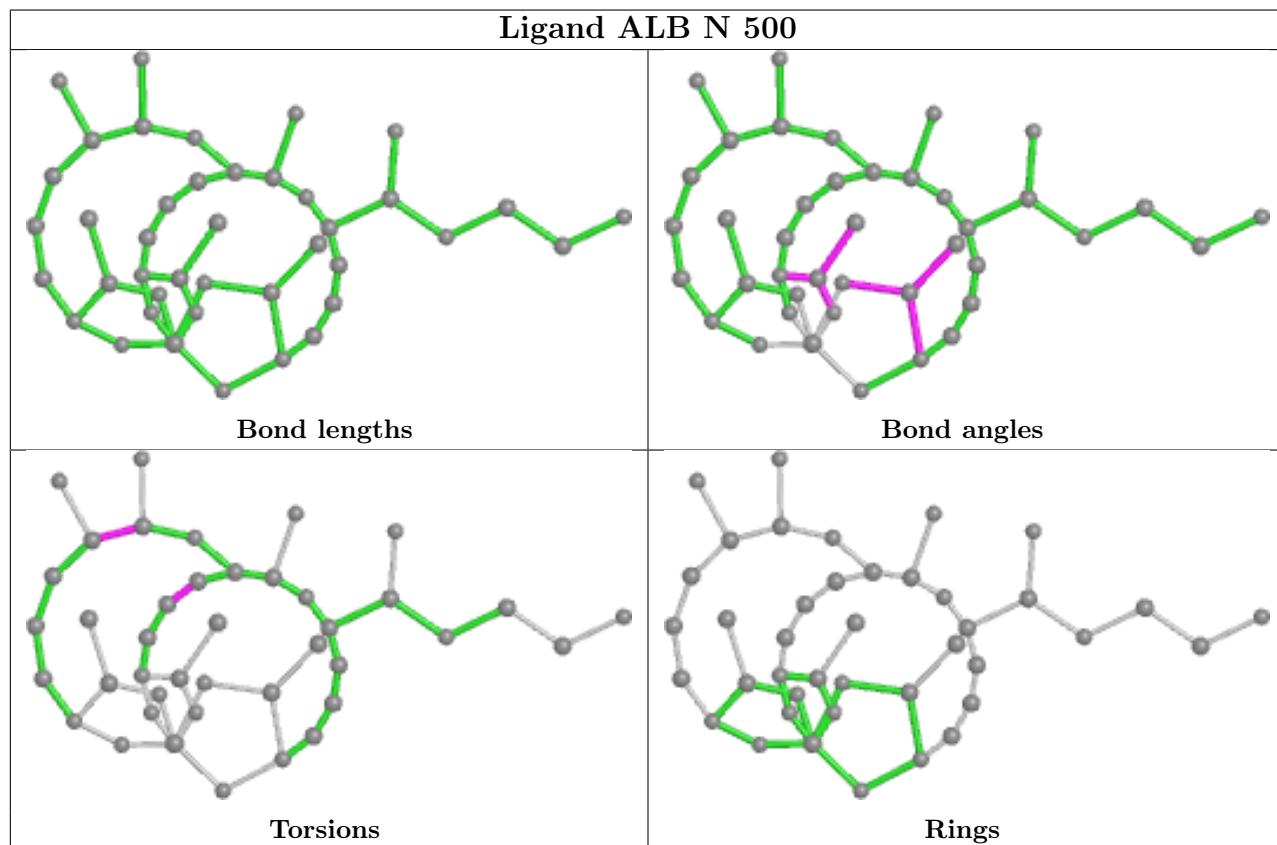
There are no ring outliers.

1 monomer is involved in 2 short contacts:

Mol	Chain	Res	Type	Clashes	Symm-Clashes
2	N	500	ALB	2	0

The following is a two-dimensional graphical depiction of Mogul quality analysis of bond lengths, bond angles, torsion angles, and ring geometry for all instances of the Ligand of Interest. In

addition, ligands with molecular weight > 250 and outliers as shown on the validation Tables will also be included. For torsion angles, if less than 5% of the Mogul distribution of torsion angles is within 10 degrees of the torsion angle in question, then that torsion angle is considered an outlier. Any bond that is central to one or more torsion angles identified as an outlier by Mogul will be highlighted in the graph. For rings, the root-mean-square deviation (RMSD) between the ring in question and similar rings identified by Mogul is calculated over all ring torsion angles. If the average RMSD is greater than 60 degrees and the minimal RMSD between the ring in question and any Mogul-identified rings is also greater than 60 degrees, then that ring is considered an outlier. The outliers are highlighted in purple. The color gray indicates Mogul did not find sufficient equivalents in the CSD to analyse the geometry.



5.7 Other polymers [i](#)

There are no such residues in this entry.

5.8 Polymer linkage issues [i](#)

There are no chain breaks in this entry.

6 Fit of model and data [i](#)

6.1 Protein, DNA and RNA chains [i](#)

EDS was not executed - this section is therefore empty.

6.2 Non-standard residues in protein, DNA, RNA chains [i](#)

EDS was not executed - this section is therefore empty.

6.3 Carbohydrates [i](#)

EDS was not executed - this section is therefore empty.

6.4 Ligands [i](#)

EDS was not executed - this section is therefore empty.

6.5 Other polymers [i](#)

EDS was not executed - this section is therefore empty.