



wwPDB NMR Structure Validation Summary Report ⓘ

Jun 3, 2023 – 08:57 PM EDT

PDB ID : 2K3J
BMRB ID : 15763
Title : The solution structure of human Mia40
Authors : Ciofi Baffoni, S.; Bertini, I.; Gallo, A.
Deposited on : 2008-05-08

This is a wwPDB NMR Structure Validation Summary Report for a publicly released PDB entry.

We welcome your comments at validation@mail.wwpdb.org

A user guide is available at

<https://www.wwpdb.org/validation/2017/NMRValidationReportHelp>

with specific help available everywhere you see the ⓘ symbol.

The types of validation reports are described at

<http://www.wwpdb.org/validation/2017/FAQs#types>.

The following versions of software and data (see [references ⓘ](#)) were used in the production of this report:

MolProbity : 4.02b-467
Percentile statistics : 20191225.v01 (using entries in the PDB archive December 25th 2019)
wwPDB-RCI : v_1n_11_5_13_A (Berjanski et al., 2005)
PANAV : Wang et al. (2010)
wwPDB-ShiftChecker : v1.2
BMRB Restraints Analysis : v1.2
Ideal geometry (proteins) : Engh & Huber (2001)
Ideal geometry (DNA, RNA) : Parkinson et al. (1996)
Validation Pipeline (wwPDB-VP) : 2.33

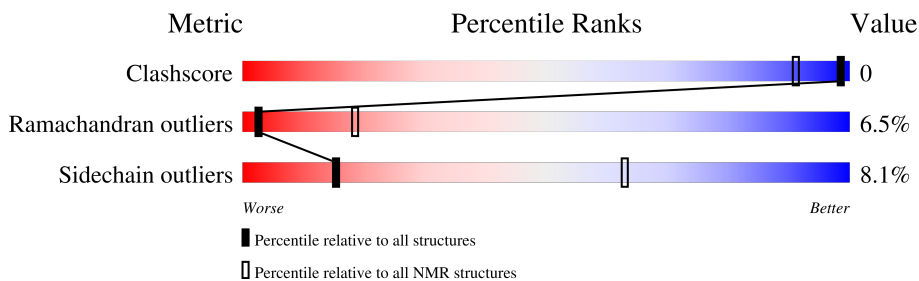
1 Overall quality at a glance

The following experimental techniques were used to determine the structure:

SOLUTION NMR

The overall completeness of chemical shifts assignment is 84%.

Percentile scores (ranging between 0-100) for global validation metrics of the entry are shown in the following graphic. The table shows the number of entries on which the scores are based.



Metric	Whole archive (#Entries)	NMR archive (#Entries)
Clashscore	158937	12864
Ramachandran outliers	154571	11451
Sidechain outliers	154315	11428

The table below summarises the geometric issues observed across the polymeric chains and their fit to the experimental data. The red, orange, yellow and green segments indicate the fraction of residues that contain outliers for ≥ 3 , 2, 1 and 0 types of geometric quality criteria. A cyan segment indicates the fraction of residues that are not part of the well-defined cores, and a grey segment represents the fraction of residues that are not modelled. The numeric value for each fraction is indicated below the corresponding segment, with a dot representing fractions $\leq 5\%$

Mol	Chain	Length	Quality of chain
1	A	146	

2 Ensemble composition and analysis i

This entry contains 20 models. Model 16 is the overall representative, medoid model (most similar to other models). The authors have identified model 1 as representative, based on the following criterion: *fewest violations*.

The following residues are included in the computation of the global validation metrics.

Well-defined (core) protein residues			
Well-defined core	Residue range (total)	Backbone RMSD (Å)	Medoid model
1	A:47-A:109 (63)	0.60	16

Ill-defined regions of proteins are excluded from the global statistics.

Ligands and non-protein polymers are included in the analysis.

The models can be grouped into 1 clusters and 2 single-model clusters were found.

Cluster number	Models
1	1, 2, 3, 4, 5, 6, 7, 8, 9, 12, 13, 14, 15, 16, 17, 18, 19, 20
Single-model clusters	10; 11

3 Entry composition

There is only 1 type of molecule in this entry. The entry contains 960 atoms, of which 459 are hydrogens and 0 are deuteriums.

- Molecule 1 is a protein called Mitochondrial intermembrane space import and assembly protein 40.

Mol	Chain	Residues	Atoms						Trace
			Total	C	H	N	O	S	
1	A	65	960	314	459	82	96	9	0

There are 4 discrepancies between the modelled and reference sequences:

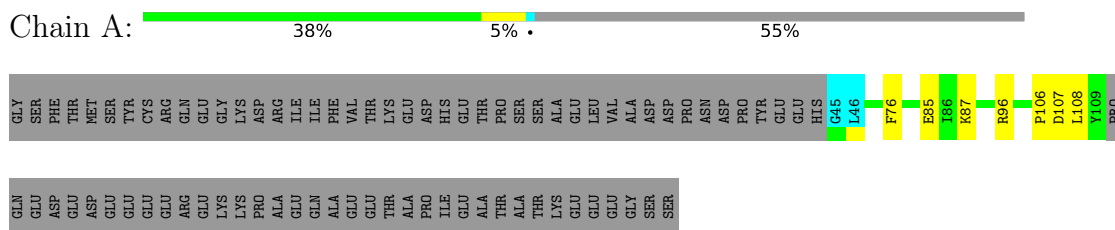
Chain	Residue	Modelled	Actual	Comment	Reference
A	1	GLY	-	expression tag	UNP Q8N4Q1
A	2	SER	-	expression tag	UNP Q8N4Q1
A	3	PHE	-	expression tag	UNP Q8N4Q1
A	4	THR	-	expression tag	UNP Q8N4Q1

4 Residue-property plots [i](#)

4.1 Average score per residue in the NMR ensemble

These plots are provided for all protein, RNA, DNA and oligosaccharide chains in the entry. The first graphic is the same as shown in the summary in section 1 of this report. The second graphic shows the sequence where residues are colour-coded according to the number of geometric quality criteria for which they contain at least one outlier: green = 0, yellow = 1, orange = 2 and red = 3 or more. Stretches of 2 or more consecutive residues without any outliers are shown as green connectors. Residues which are classified as ill-defined in the NMR ensemble, are shown in cyan with an underline colour-coded according to the previous scheme. Residues which were present in the experimental sample, but not modelled in the final structure are shown in grey.

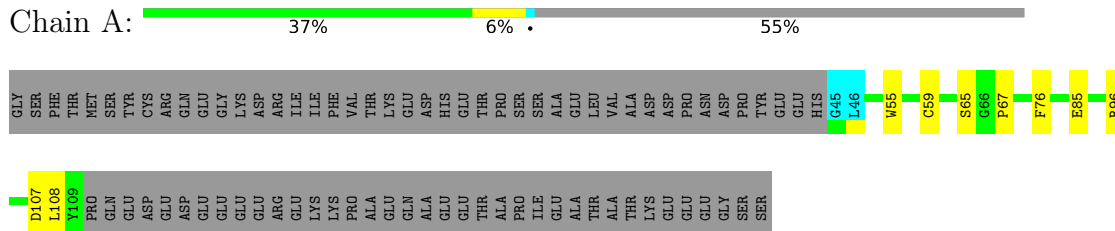
- Molecule 1: Mitochondrial intermembrane space import and assembly protein 40



4.2 Residue scores for the representative (medoid) model from the NMR ensemble

The representative model is number 16. Colouring as in section 4.1 above.

- Molecule 1: Mitochondrial intermembrane space import and assembly protein 40



5 Refinement protocol and experimental data overview

The models were refined using the following method: *molecular dynamics*.

Of the 400 calculated structures, 20 were deposited, based on the following criterion: *target function*.

The following table shows the software used for structure solution, optimisation and refinement.

Software name	Classification	Version
CYANA	structure solution	2.1
Amber	refinement	8.0
Amber	geometry optimization	8.0

The following table shows chemical shift validation statistics as aggregates over all chemical shift files. Detailed validation can be found in section 7 of this report.

Chemical shift file(s)	working_cs.cif
Number of chemical shift lists	1
Total number of shifts	699
Number of shifts mapped to atoms	689
Number of unparsed shifts	0
Number of shifts with mapping errors	10
Number of shifts with mapping warnings	0
Assignment completeness (well-defined parts)	84%

6 Model quality i

6.1 Standard geometry i

The Z score for a bond length (or angle) is the number of standard deviations the observed value is removed from the expected value. A bond length (or angle) with $|Z| > 5$ is considered an outlier worth inspection. RMSZ is the (average) root-mean-square of all Z scores of the bond lengths (or angles).

Mol	Chain	Bond lengths		Bond angles	
		RMSZ	#Z>5	RMSZ	#Z>5
1	A	0.77±0.01	0±0/502 (0.0± 0.0%)	1.03±0.04	1±1/676 (0.1± 0.1%)
All	All	0.77	0/10040 (0.0%)	1.03	17/13520 (0.1%)

Chiral center outliers are detected by calculating the chiral volume of a chiral center and verifying if the center is modelled as a planar moiety or with the opposite hand. A planarity outlier is detected by checking planarity of atoms in a peptide group, atoms in a mainchain group or atoms of a sidechain that are expected to be planar.

Mol	Chain	Chirality	Planarity
1	A	0.0±0.0	0.1±0.2
All	All	0	1

There are no bond-length outliers.

All unique angle outliers are listed below. They are sorted according to the Z-score of the worst occurrence in the ensemble.

Mol	Chain	Res	Type	Atoms	Z	Observed(°)	Ideal(°)	Models	
								Worst	Total
1	A	96	ARG	NE-CZ-NH1	8.90	124.75	120.30	4	10
1	A	96	ARG	NE-CZ-NH2	-6.19	117.21	120.30	12	2
1	A	105	TYR	CB-CG-CD2	-5.80	117.52	121.00	2	4
1	A	100	GLU	OE1-CD-OE2	-5.10	117.18	123.30	8	1

There are no chirality outliers.

All unique planar outliers are listed below.

Mol	Chain	Res	Type	Group	Models (Total)
1	A	96	ARG	Sidechain	1

6.2 Too-close contacts [i](#)

In the following table, the Non-H and H(model) columns list the number of non-hydrogen atoms and hydrogen atoms in each chain respectively. The H(added) column lists the number of hydrogen atoms added and optimized by MolProbity. The Clashes column lists the number of clashes averaged over the ensemble.

Mol	Chain	Non-H	H(model)	H(added)	Clashes
1	A	489	445	445	0±0
All	All	9780	8900	8900	1

The all-atom clashscore is defined as the number of clashes found per 1000 atoms (including hydrogen atoms). The all-atom clashscore for this structure is 0.

All unique clashes are listed below, sorted by their clash magnitude.

Atom-1	Atom-2	Clash(Å)	Distance(Å)	Models	
				Worst	Total
1:A:108:LEU:HD13	1:A:108:LEU:H	0.45	1.71	8	1

6.3 Torsion angles [i](#)

6.3.1 Protein backbone [i](#)

In the following table, the Percentiles column shows the percent Ramachandran outliers of the chain as a percentile score with respect to all PDB entries followed by that with respect to all NMR entries. The Analysed column shows the number of residues for which the backbone conformation was analysed and the total number of residues.

Mol	Chain	Analysed	Favoured	Allowed	Outliers	Percentiles	
1	A	62/146 (42%)	52±2 (84±3%)	6±2 (9±4%)	4±1 (6±2%)	2	18
All	All	1240/2920 (42%)	1044 (84%)	116 (9%)	80 (6%)	2	18

5 of 14 unique Ramachandran outliers are listed below. They are sorted by the frequency of occurrence in the ensemble.

Mol	Chain	Res	Type	Models (Total)
1	A	106	PRO	14
1	A	85	GLU	12
1	A	87	LYS	12
1	A	107	ASP	8
1	A	67	PRO	6

6.3.2 Protein sidechains [i](#)

In the following table, the Percentiles column shows the percent sidechain outliers of the chain as a percentile score with respect to all PDB entries followed by that with respect to all NMR entries. The Analysed column shows the number of residues for which the sidechain conformation was analysed and the total number of residues.

Mol	Chain	Analysed	Rotameric	Outliers	Percentiles
1	A	54/126 (43%)	50±1 (92±3%)	4±1 (8±3%)	15 63
All	All	1080/2520 (43%)	992 (92%)	88 (8%)	15 63

5 of 20 unique residues with a non-rotameric sidechain are listed below. They are sorted by the frequency of occurrence in the ensemble.

Mol	Chain	Res	Type	Models (Total)
1	A	108	LEU	19
1	A	76	PHE	11
1	A	56	ASN	10
1	A	109	TYR	8
1	A	100	GLU	6

6.3.3 RNA [i](#)

There are no RNA molecules in this entry.

6.4 Non-standard residues in protein, DNA, RNA chains [i](#)

There are no non-standard protein/DNA/RNA residues in this entry.

6.5 Carbohydrates [i](#)

There are no monosaccharides in this entry.

6.6 Ligand geometry [i](#)

There are no ligands in this entry.

6.7 Other polymers [i](#)

There are no such molecules in this entry.

6.8 Polymer linkage issues

There are no chain breaks in this entry.

7 Chemical shift validation i

The completeness of assignment taking into account all chemical shift lists is 84% for the well-defined parts and 84% for the entire structure.

7.1 Chemical shift list 1

File name: working_cs.cif

Chemical shift list name: *assigned_chem_shift_list_1*

7.1.1 Bookkeeping i

The following table shows the results of parsing the chemical shift list and reports the number of nuclei with statistically unusual chemical shifts.

Total number of shifts	699
Number of shifts mapped to atoms	689
Number of unparsed shifts	0
Number of shifts with mapping errors	10
Number of shifts with mapping warnings	0
Number of shift outliers (ShiftChecker)	5

The following assigned chemical shifts were not mapped to the molecules present in the coordinate file.

- No matching atom found in the structure. First 5 (of 10) occurrences are reported below.

List ID	Chain	Res	Type	Atom	Shift Data		
					Value	Uncertainty	Ambiguity
1	A	110	PRO	HA	4.43	0.02	1
1	A	110	PRO	HB2	2.19	0.02	2
1	A	110	PRO	HB3	1.82	0.02	2
1	A	110	PRO	HD2	3.51	0.02	2
1	A	110	PRO	HD3	3.35	0.02	2
1	A	110	PRO	HG2	1.91	0.02	1
1	A	110	PRO	CA	60.4	0.3	1
1	A	110	PRO	CB	29.5	0.3	1
1	A	110	PRO	CD	47.6	0.3	1
1	A	110	PRO	CG	24.8	0.3	1

7.1.2 Chemical shift referencing i

The following table shows the suggested chemical shift referencing corrections.

Nucleus	# values	Correction \pm precision, ppm	Suggested action
$^{13}\text{C}_\alpha$	66	2.54 ± 0.24	Should be checked
$^{13}\text{C}_\beta$	59	3.38 ± 0.26	Should be checked
$^{13}\text{C}'$	59	2.45 ± 0.16	Should be applied
^{15}N	59	0.81 ± 0.46	None needed (imprecise)

7.1.3 Completeness of resonance assignments [i](#)

The following table shows the completeness of the chemical shift assignments for the well-defined regions of the structure. The overall completeness is 84%, i.e. 668 atoms were assigned a chemical shift out of a possible 796. 0 out of 4 assigned methyl groups (LEU and VAL) were assigned stereospecifically.

	Total	^1H	^{13}C	^{15}N
Backbone	306/313 (98%)	127/128 (99%)	121/126 (96%)	58/59 (98%)
Sidechain	340/397 (86%)	225/256 (88%)	108/127 (85%)	7/14 (50%)
Aromatic	22/86 (26%)	22/42 (52%)	0/42 (0%)	0/2 (0%)
Overall	668/796 (84%)	374/426 (88%)	229/295 (78%)	65/75 (87%)

7.1.4 Statistically unusual chemical shifts [i](#)

The following table lists the statistically unusual chemical shifts. These are statistical measures, and large deviations from the mean do not necessarily imply incorrect assignments. Molecules containing paramagnetic centres or hemes are expected to give rise to anomalous chemical shifts.

List Id	Chain	Res	Type	Atom	Shift, ppm	Expected range, ppm	Z-score
1	A	73	LYS	HG3	-1.05	0.04 – 2.67	-9.1
1	A	53	ILE	HG21	-0.83	-0.56 – 2.11	-6.0
1	A	53	ILE	HG22	-0.83	-0.56 – 2.11	-6.0
1	A	53	ILE	HG23	-0.83	-0.56 – 2.11	-6.0
1	A	73	LYS	HE2	1.91	1.95 – 3.88	-5.2

7.1.5 Random Coil Index (RCI) plots [i](#)

The image below reports *random coil index* values for the protein chains in the structure. The height of each bar gives a probability of a given residue to be disordered, as predicted from the available chemical shifts and the amino acid sequence. A value above 0.2 is an indication of significant predicted disorder. The colour of the bar shows whether the residue is in the well-defined core (black) or in the ill-defined residue ranges (cyan), as described in section 2 on ensemble composition. If well-defined core and ill-defined regions are not identified then it is shown as gray bars.

Random coil index (RCI) for chain A:



8 NMR restraints analysis

8.1 Conformationally restricting restraints

The following table provides the summary of experimentally observed NMR restraints in different categories. Restraints are classified into different categories based on the sequence separation of the atoms involved.

Description	Value
Total distance restraints	1264
Intra-residue ($ i-j =0$)	221
Sequential ($ i-j =1$)	418
Medium range ($ i-j >1$ and $ i-j <5$)	352
Long range ($ i-j \geq 5$)	273
Inter-chain	0
Hydrogen bond restraints	0
Disulfide bond restraints	0
Total dihedral-angle restraints	0
Number of unmapped restraints	10
Number of restraints per residue	8.7
Number of long range restraints per residue ¹	1.9

¹Long range hydrogen bonds and disulfide bonds are counted as long range restraints while calculating the number of long range restraints per residue

8.2 Residual restraint violations

This section provides the overview of the restraint violations analysis. The violations are binned as small, medium and large violations based on its absolute value. Average number of violations per model is calculated by dividing the total number of violations in each bin by the size of the ensemble.

8.2.1 Average number of distance violations per model

Distance violations less than 0.1 Å are not included in the calculation.

Bins (Å)	Average number of violations per model	Max (Å)
0.1-0.2 (Small)	29.1	0.2
0.2-0.5 (Medium)	58.2	0.5
>0.5 (Large)	90.0	4.05

8.2.2 Average number of dihedral-angle violations per model

Dihedral-angle violations less than 1° are not included in the calculation. There are no dihedral-angle violations

9 Distance violation analysis i

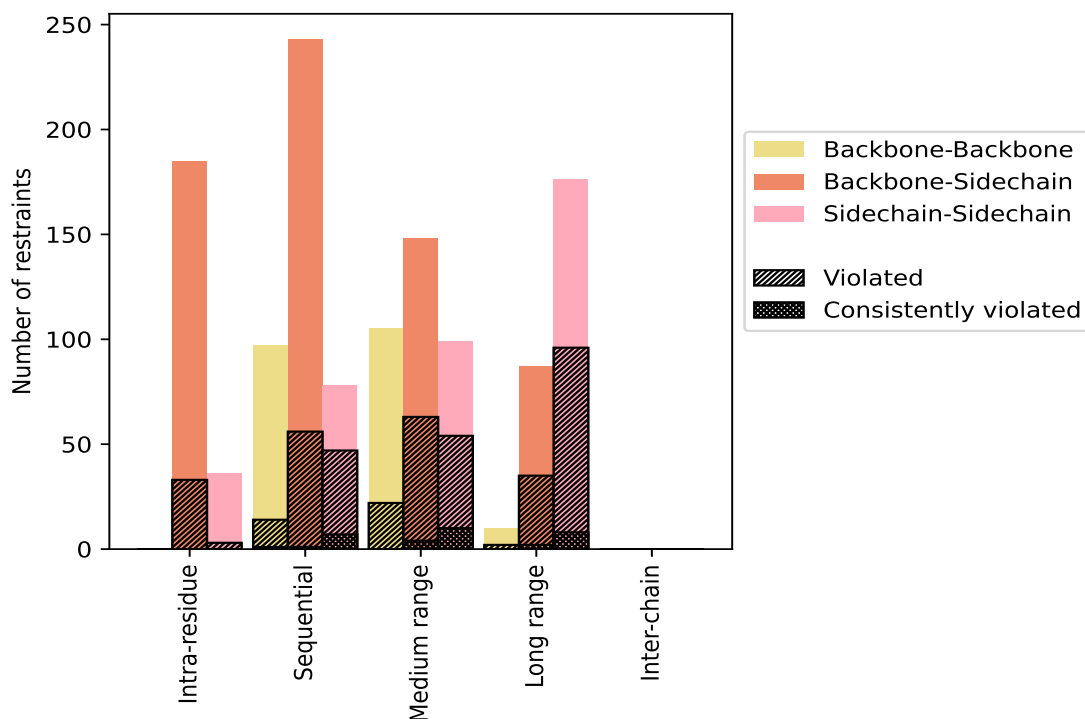
9.1 Summary of distance violations i

The following table shows the summary of distance violations in different restraint categories based on the sequence separation of the atoms involved. Each category is further sub-divided into three sub-categories based on the atoms involved. Violations less than 0.1 Å are not included in the statistics.

Restrains type	Count	% ¹	Violated ³			Consistently Violated ⁴		
			Count	% ²	% ¹	Count	% ²	% ¹
Intra-residue ($i-j =0$)	221	17.5	36	16.3	2.8	0	0.0	0.0
Backbone-Backbone	0	0.0	0	0.0	0.0	0	0.0	0.0
Backbone-Sidechain	185	14.6	33	17.8	2.6	0	0.0	0.0
Sidechain-Sidechain	36	2.8	3	8.3	0.2	0	0.0	0.0
Sequential ($i-j =1$)	418	33.1	117	28.0	9.3	9	2.2	0.7
Backbone-Backbone	97	7.7	14	14.4	1.1	1	1.0	0.1
Backbone-Sidechain	243	19.2	56	23.0	4.4	1	0.4	0.1
Sidechain-Sidechain	78	6.2	47	60.3	3.7	7	9.0	0.6
Medium range ($i-j >1$ & $i-j <5$)	352	27.8	139	39.5	11.0	14	4.0	1.1
Backbone-Backbone	105	8.3	22	21.0	1.7	0	0.0	0.0
Backbone-Sidechain	148	11.7	63	42.6	5.0	4	2.7	0.3
Sidechain-Sidechain	99	7.8	54	54.5	4.3	10	10.1	0.8
Long range ($i-j \geq 5$)	273	21.6	133	48.7	10.5	10	3.7	0.8
Backbone-Backbone	10	0.8	2	20.0	0.2	0	0.0	0.0
Backbone-Sidechain	87	6.9	35	40.2	2.8	2	2.3	0.2
Sidechain-Sidechain	176	13.9	96	54.5	7.6	8	4.5	0.6
Inter-chain	0	0.0	0	0.0	0.0	0	0.0	0.0
Backbone-Backbone	0	0.0	0	0.0	0.0	0	0.0	0.0
Backbone-Sidechain	0	0.0	0	0.0	0.0	0	0.0	0.0
Sidechain-Sidechain	0	0.0	0	0.0	0.0	0	0.0	0.0
Hydrogen bond	0	0.0	0	0.0	0.0	0	0.0	0.0
Disulfide bond	0	0.0	0	0.0	0.0	0	0.0	0.0
Total	1264	100.0	425	33.6	33.6	33	2.6	2.6
Backbone-Backbone	212	16.8	38	17.9	3.0	1	0.5	0.1
Backbone-Sidechain	663	52.5	187	28.2	14.8	7	1.1	0.6
Sidechain-Sidechain	389	30.8	200	51.4	15.8	25	6.4	2.0

¹ percentage calculated with respect to the total number of distance restraints, ² percentage calculated with respect to the number of restraints in a particular restraint category, ³ violated in at least one model, ⁴ violated in all the models

9.1.1 Bar chart : Distribution of distance restraints and violations [i](#)



Violated and consistently violated restraints are shown using different hatch patterns in their respective categories. The hydrogen bonds and disulfied bonds are counted in their appropriate category on the x-axis

9.2 Distance violation statistics for each model [i](#)

The following table provides the distance violation statistics for each model in the ensemble. Violations less than 0.1 Å are not included in the statistics.

Model ID	Number of violations						Mean (Å)	Max (Å)	SD ⁶ (Å)	Median (Å)
	IR ¹	SQ ²	MR ³	LR ⁴	IC ⁵	Total				
1	11	53	68	56	0	188	0.7	2.57	0.54	0.5
2	8	54	53	58	0	173	0.68	2.25	0.5	0.57
3	10	50	65	53	0	178	0.71	3.1	0.6	0.54
4	9	50	62	47	0	168	0.7	2.57	0.52	0.5
5	9	51	58	63	0	181	0.72	2.85	0.6	0.54
6	9	54	68	48	0	179	0.77	4.05	0.68	0.53
7	10	52	58	68	0	188	0.73	3.19	0.6	0.58
8	7	54	63	60	0	184	0.67	3.55	0.59	0.47
9	10	50	69	51	0	180	0.72	2.87	0.6	0.5
10	11	68	67	49	0	195	0.76	3.0	0.62	0.57
11	11	49	64	69	0	193	0.67	2.76	0.56	0.48

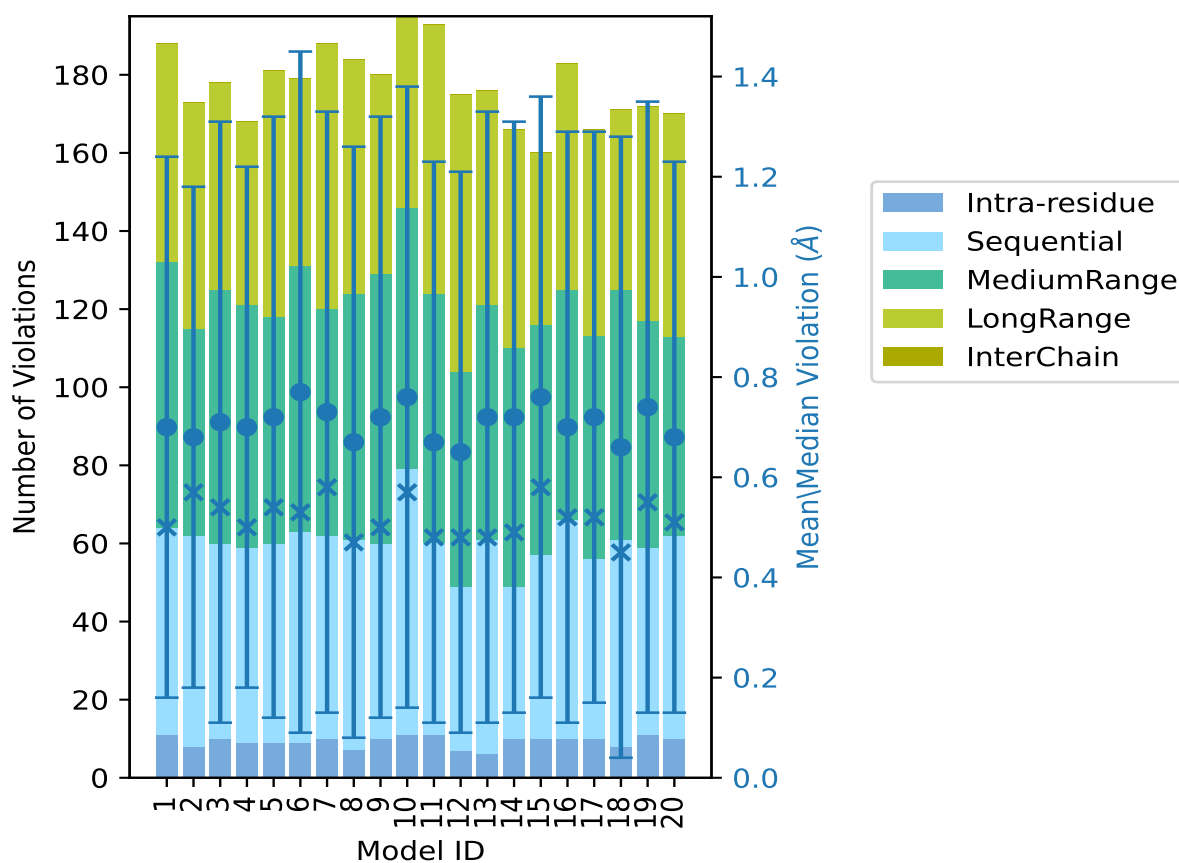
Continued on next page...

Continued from previous page...

Model ID	Number of violations					Total	Mean (Å)	Max (Å)	SD ⁶ (Å)	Median (Å)
	IR ¹	SQ ²	MR ³	LR ⁴	IC ⁵					
12	7	42	55	71	0	175	0.65	2.75	0.56	0.48
13	6	55	60	55	0	176	0.72	2.9	0.61	0.48
14	10	39	61	56	0	166	0.72	2.77	0.59	0.49
15	10	47	59	44	0	160	0.76	3.21	0.6	0.58
16	10	56	59	58	0	183	0.7	3.12	0.59	0.52
17	10	46	57	53	0	166	0.72	2.59	0.57	0.52
18	8	53	64	46	0	171	0.66	3.51	0.62	0.45
19	11	48	58	55	0	172	0.74	2.69	0.61	0.55
20	10	52	51	57	0	170	0.68	2.59	0.55	0.51

¹Intra-residue restraints, ²Sequential restraints, ³Medium range restraints, ⁴Long range restraints, ⁵Inter-chain restraints, ⁶Standard deviation

9.2.1 Bar graph : Distance Violation statistics for each model [i](#)



The mean(dot),median(x) and the standard deviation are shown in blue with respect to the y axis on the right

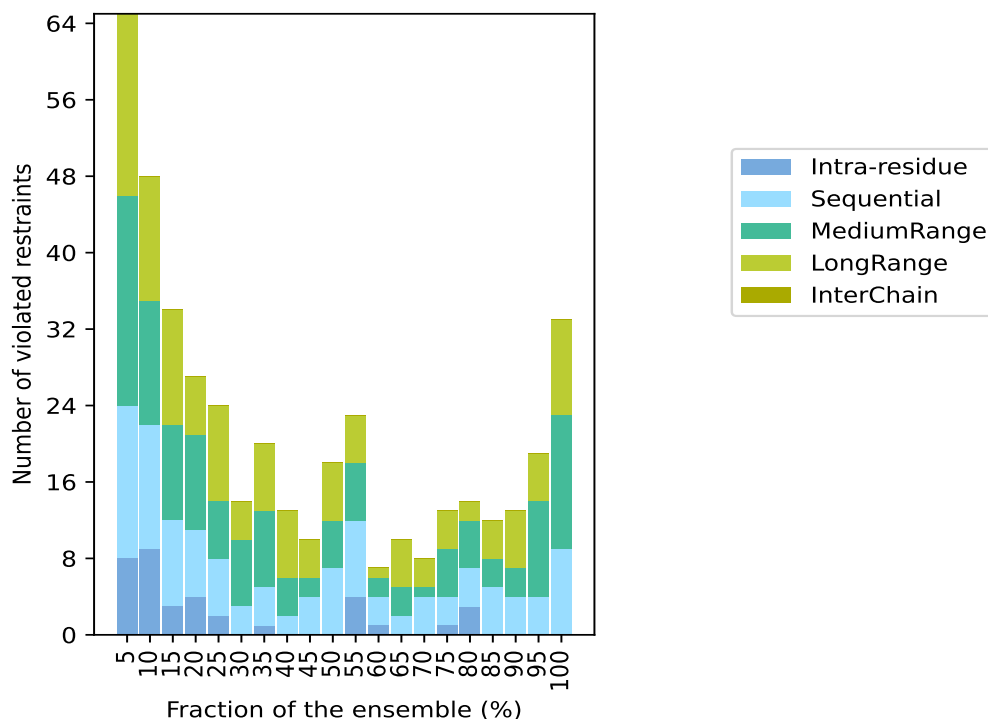
9.3 Distance violation statistics for the ensemble

Violation analysis may find that some restraints are violated in few models and some are violated in most of models. The following table provides this information as number of violated restraints for a given fraction of the ensemble. In total, 839(IR:185, SQ:301, MR:213, LR:140, IC:0) restraints are not violated in the ensemble.

Number of violated restraints						Fraction of the ensemble	
IR ¹	SQ ²	MR ³	LR ⁴	IC ⁵	Total	Count ⁶	%
8	16	22	19	0	65	1	5.0
9	13	13	13	0	48	2	10.0
3	9	10	12	0	34	3	15.0
4	7	10	6	0	27	4	20.0
2	6	6	10	0	24	5	25.0
0	3	7	4	0	14	6	30.0
1	4	8	7	0	20	7	35.0
0	2	4	7	0	13	8	40.0
0	4	2	4	0	10	9	45.0
0	7	5	6	0	18	10	50.0
4	8	6	5	0	23	11	55.0
1	3	2	1	0	7	12	60.0
0	2	3	5	0	10	13	65.0
0	4	1	3	0	8	14	70.0
1	3	5	4	0	13	15	75.0
3	4	5	2	0	14	16	80.0
0	5	3	4	0	12	17	85.0
0	4	3	6	0	13	18	90.0
0	4	10	5	0	19	19	95.0
0	9	14	10	0	33	20	100.0

¹Intra-residue restraints, ²Sequential restraints, ³Medium range restraints, ⁴Long range restraints, ⁵Inter-chain restraints, ⁶ Number of models with violations

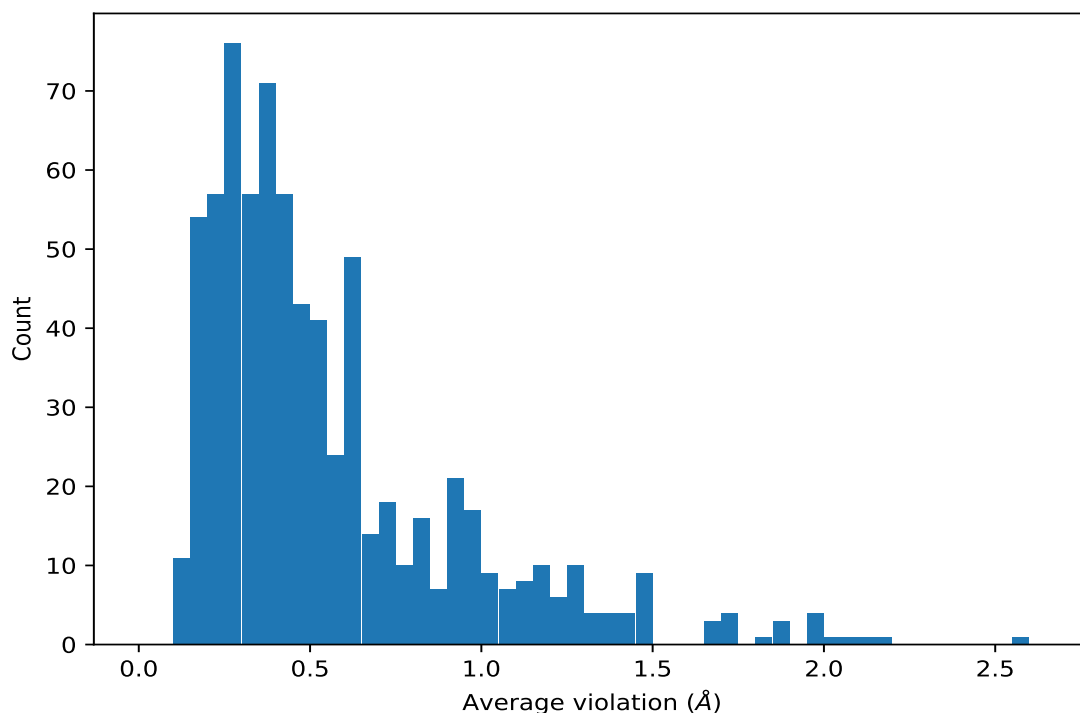
9.3.1 Bar graph : Distance violation statistics for the ensemble [i](#)



9.4 Most violated distance restraints in the ensemble [i](#)

9.4.1 Histogram : Distribution of mean distance violations [i](#)

The following histogram shows the distribution of the average value of the violation. The average is calculated for each restraint that is violated in more than one model over all the violated models in the ensemble



9.4.2 Table: Most violated distance restraints [i](#)

The following table provides the mean and the standard deviation of the violations for the 10 worst performing restraints, sorted by number of violated models and the mean violation value. The Key (restraint list ID, restraint ID) is the unique identifier for a given restraint. Rows with same key represent combinatorial or ambiguous restraints and are counted as a single restraint.

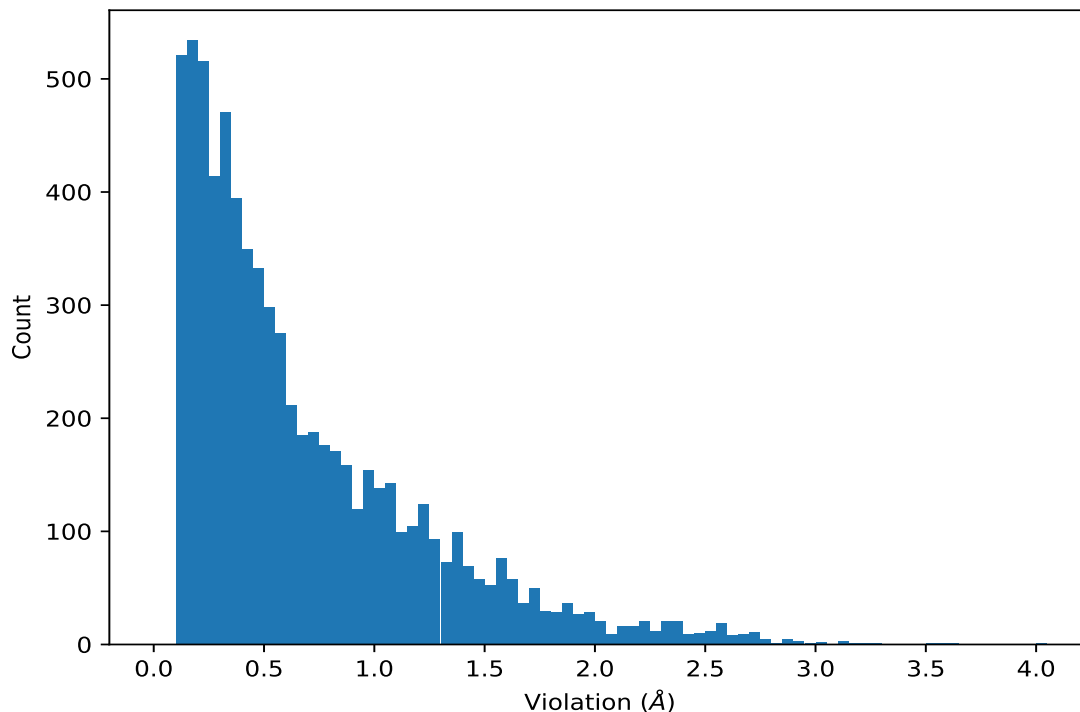
Key	Atom-1	Atom-2	Models ¹	Mean (Å)	SD ¹ (Å)	Median (Å)
(1,133)	1:A:105:TYR:HB2	1:A:108:LEU:HB2	20	2.56	0.18	2.6
(1,522)	1:A:48:LEU:HG	1:A:50:ASN:HD21	20	2.19	0.51	2.23
(1,951)	1:A:68:CYS:HB3	1:A:71:GLN:HE21	20	2.08	0.43	2.17
(1,911)	1:A:68:CYS:HB2	1:A:71:GLN:HE21	20	2.02	0.41	2.08
(1,295)	1:A:46:LEU:HB2	1:A:47:ILE:HG13	20	1.97	0.33	1.98
(1,433)	1:A:48:LEU:HD21	1:A:52:ASN:HD22	20	1.88	0.75	1.92
(1,433)	1:A:48:LEU:HD22	1:A:52:ASN:HD22	20	1.88	0.75	1.92
(1,433)	1:A:48:LEU:HD23	1:A:52:ASN:HD22	20	1.88	0.75	1.92
(1,780)	1:A:45:GLY:H	1:A:47:ILE:HG13	20	1.83	0.97	1.62
(1,725)	1:A:48:LEU:HD21	1:A:52:ASN:HD22	20	1.74	0.75	1.78
(1,725)	1:A:48:LEU:HD22	1:A:52:ASN:HD22	20	1.74	0.75	1.78
(1,725)	1:A:48:LEU:HD23	1:A:52:ASN:HD22	20	1.74	0.75	1.78
(1,101)	1:A:53:ILE:HG13	1:A:60:LEU:HG	20	1.65	0.32	1.72
(1,58)	1:A:105:TYR:HB2	1:A:109:TYR:HD1	20	1.45	0.65	1.48

¹Number of violated models, ²Standard deviation

9.5 All violated distance restraints [i](#)

9.5.1 Histogram : Distribution of distance violations [i](#)

The following histogram shows the distribution of the absolute value of the violation for all violated restraints in the ensemble.



9.5.2 Table : All distance violations [i](#)

The following table provides the 10 worst performing restraints, sorted by the violation value. The Key (restraint list ID, restraint ID) is the unique identifier for a given restraint. Rows with same key represent combinatorial or ambiguous restraints and are counted as a single restraint.

Key	Atom-1	Atom-2	Model ID	Violation (Å)
(1,825)	1:A:50:ASN:HD21	1:A:52:ASN:HD22	6	4.05
(1,780)	1:A:45:GLY:H	1:A:47:ILE:HG13	6	3.61
(1,780)	1:A:45:GLY:H	1:A:47:ILE:HG13	8	3.55
(1,780)	1:A:45:GLY:H	1:A:47:ILE:HG13	18	3.51
(1,825)	1:A:50:ASN:HD21	1:A:52:ASN:HD22	18	3.27
(1,825)	1:A:50:ASN:HD21	1:A:52:ASN:HD22	15	3.21
(1,951)	1:A:68:CYS:HB3	1:A:71:GLN:HE21	7	3.19
(1,18)	1:A:55:TRP:HZ3	1:A:73:LYS:HD2	16	3.12
(1,911)	1:A:68:CYS:HB2	1:A:71:GLN:HE21	7	3.11
(1,270)	1:A:48:LEU:HG	1:A:50:ASN:HD22	3	3.1

10 Dihedral-angle violation analysis

Dihedral angle analysis failed due to data error in the dihedral angle restraints, possibly missing target value