



wwPDB X-ray Structure Validation Summary Report ⓘ

Aug 6, 2023 – 11:58 PM EDT

PDB ID : 1K39
Title : The structure of yeast delta3-delta2-enoyl-COA isomerase complexed with octanoyl-COA
Authors : Mursula, A.M.; Geerlof, A.; Hiltunen, J.K.; Wierenga, R.K.
Deposited on : 2001-10-02
Resolution : 3.29 Å(reported)

This is a wwPDB X-ray Structure Validation Summary Report for a publicly released PDB entry.

We welcome your comments at validation@mail.wwpdb.org

A user guide is available at

<https://www.wwpdb.org/validation/2017/XrayValidationReportHelp>

with specific help available everywhere you see the ⓘ symbol.

The types of validation reports are described at

<http://www.wwpdb.org/validation/2017/FAQs#types>.

The following versions of software and data (see [references ⓘ](#)) were used in the production of this report:

MolProbity : 4.02b-467
Mogul : 1.8.5 (274361), CSD as541be (2020)
Xtriage (Phenix) : 1.13
EDS : 2.35
buster-report : 1.1.7 (2018)
Percentile statistics : 20191225.v01 (using entries in the PDB archive December 25th 2019)
Refmac : 5.8.0158
CCP4 : 7.0.044 (Gargrove)
Ideal geometry (proteins) : Engh & Huber (2001)
Ideal geometry (DNA, RNA) : Parkinson et al. (1996)
Validation Pipeline (wwPDB-VP) : 2.35

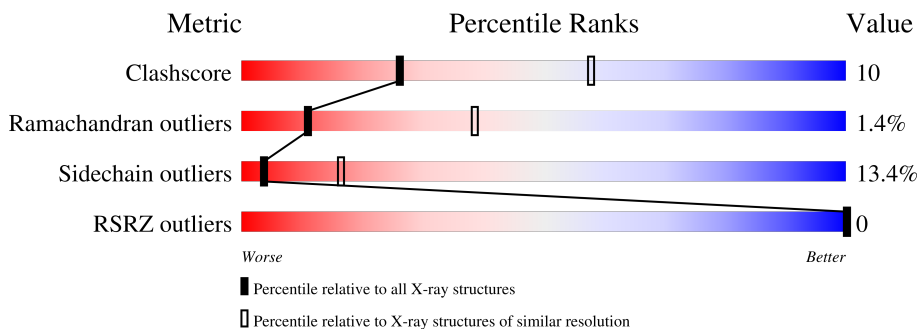
1 Overall quality at a glance

The following experimental techniques were used to determine the structure:

X-RAY DIFFRACTION

The reported resolution of this entry is 3.29 Å.

Percentile scores (ranging between 0-100) for global validation metrics of the entry are shown in the following graphic. The table shows the number of entries on which the scores are based.



Metric	Whole archive (#Entries)	Similar resolution (#Entries, resolution range(Å))
Clashscore	141614	1205 (3.34-3.26)
Ramachandran outliers	138981	1183 (3.34-3.26)
Sidechain outliers	138945	1182 (3.34-3.26)
RSRZ outliers	127900	1115 (3.34-3.26)

The table below summarises the geometric issues observed across the polymeric chains and their fit to the electron density. The red, orange, yellow and green segments of the lower bar indicate the fraction of residues that contain outliers for ≥ 3 , 2, 1 and 0 types of geometric quality criteria respectively. A grey segment represents the fraction of residues that are not modelled. The numeric value for each fraction is indicated below the corresponding segment, with a dot representing fractions $\leq 5\%$. The upper red bar (where present) indicates the fraction of residues that have poor fit to the electron density. The numeric value is given above the bar.

Mol	Chain	Length	Quality of chain
1	A	280	64% 28% 5% .
1	B	280	61% 31% . . .
1	C	280	62% 29% . 5%

The following table lists non-polymeric compounds, carbohydrate monomers and non-standard residues in protein, DNA, RNA chains that are outliers for geometric or electron-density-fit criteria:

Mol	Type	Chain	Res	Chirality	Geometry	Clashes	Electron density
3	CO8	C	302	-	-	-	X

2 Entry composition [i](#)

There are 4 unique types of molecules in this entry. The entry contains 6587 atoms, of which 0 are hydrogens and 0 are deuteriums.

In the tables below, the ZeroOcc column contains the number of atoms modelled with zero occupancy, the AltConf column contains the number of residues with at least one atom in alternate conformation and the Trace column contains the number of residues modelled with at most 2 atoms.

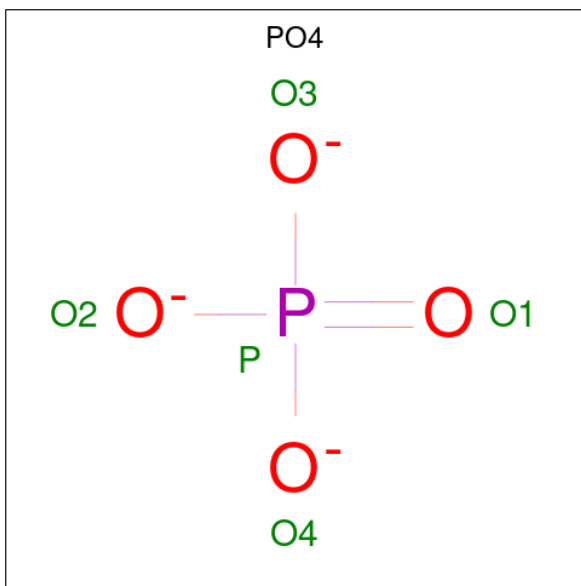
- Molecule 1 is a protein called d3,d2-enoyl CoA isomerase ECI1.

Mol	Chain	Residues	Atoms					ZeroOcc	AltConf	Trace
			Total	C	N	O	S			
1	A	269	Total 2135	C 1375	N 351	O 399	S 10	48	0	0
1	B	271	Total 2150	C 1384	N 354	O 402	S 10	73	0	0
1	C	266	Total 2114	C 1362	N 348	O 394	S 10	35	0	0

There are 3 discrepancies between the modelled and reference sequences:

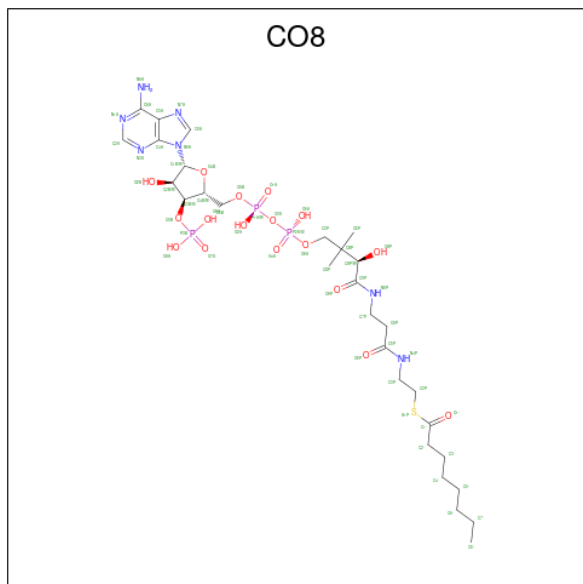
Chain	Residue	Modelled	Actual	Comment	Reference
A	25	ILE	MET	engineered mutation	UNP Q05871
B	25	ILE	MET	engineered mutation	UNP Q05871
C	25	ILE	MET	engineered mutation	UNP Q05871

- Molecule 2 is PHOSPHATE ION (three-letter code: PO4) (formula: O₄P).



Mol	Chain	Residues	Atoms	ZeroOcc	AltConf
2	A	1	Total O P 5 4 1	0	0
2	A	1	Total O P 5 4 1	0	0
2	C	1	Total O P 5 4 1	0	0

- Molecule 3 is OCTANOYL-COENZYME A (three-letter code: CO8) (formula: $C_{29}H_{50}N_7O_{17}P_3S$).



Mol	Chain	Residues	Atoms	ZeroOcc	AltConf
3	A	1	Total C N O P S 57 29 7 17 3 1	0	0
3	B	1	Total C N O P S 57 29 7 17 3 1	0	0
3	C	1	Total C N O P S 57 29 7 17 3 1	0	0

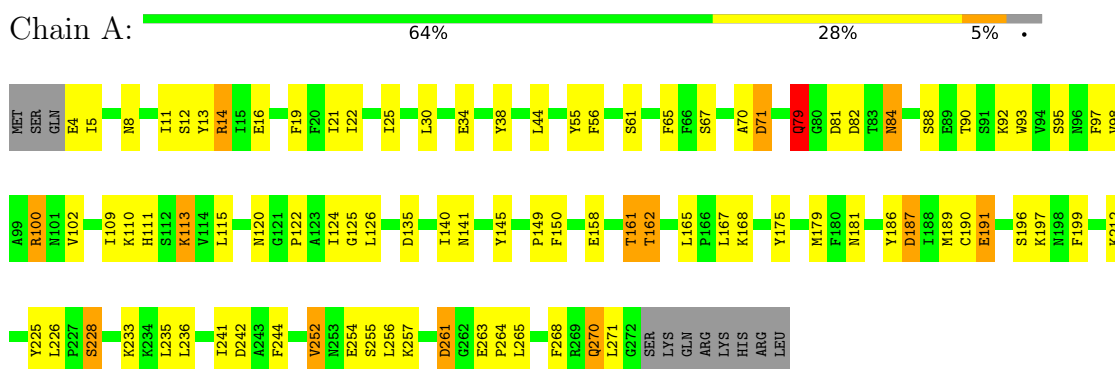
- Molecule 4 is water.

Mol	Chain	Residues	Atoms	ZeroOcc	AltConf
4	B	2	Total O 2 2	0	0

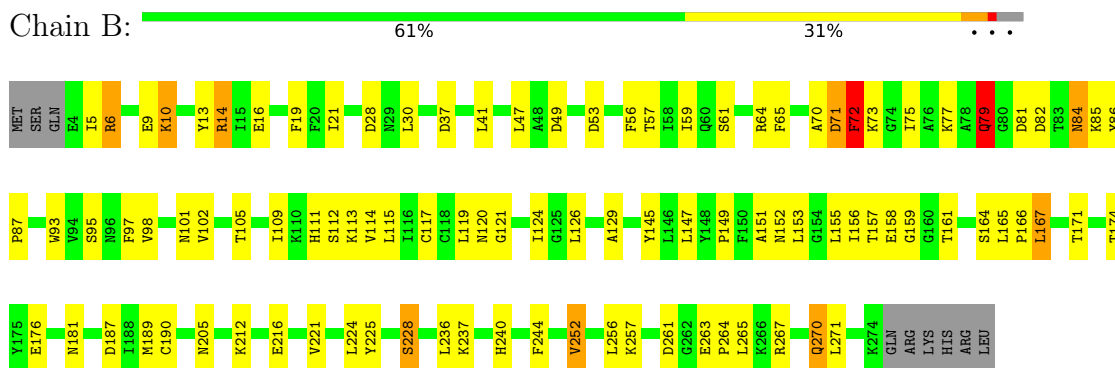
3 Residue-property plots

These plots are drawn for all protein, RNA, DNA and oligosaccharide chains in the entry. The first graphic for a chain summarises the proportions of the various outlier classes displayed in the second graphic. The second graphic shows the sequence view annotated by issues in geometry and electron density. Residues are color-coded according to the number of geometric quality criteria for which they contain at least one outlier: green = 0, yellow = 1, orange = 2 and red = 3 or more. A red dot above a residue indicates a poor fit to the electron density ($RSRZ > 2$). Stretches of 2 or more consecutive residues without any outlier are shown as a green connector. Residues present in the sample, but not in the model, are shown in grey.

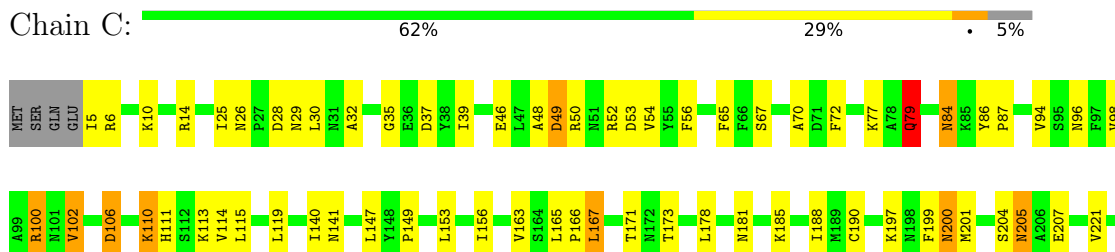
- Molecule 1: d3,d2-enoyl CoA isomerase ECI1



- Molecule 1: d3,d2-enoyl CoA isomerase ECI1



- Molecule 1: d3,d2-enoyl CoA isomerase ECI1



L224	Y225	L226	P227	S228	K234	L235	L236	K237	I241	D242	K246	V250	E251	V252	S255	L256	K257	D261	G262	E263	P264	L265	K266	R267	F268	R269	Q270	LEU	GLY	SER	LYS	GLN	ARG	LYS	HIS	ARG	LEU
------	------	------	------	------	------	------	------	------	------	------	------	------	------	------	------	------	------	------	------	------	------	------	------	------	------	------	------	-----	-----	-----	-----	-----	-----	-----	-----	-----	-----

4 Data and refinement statistics

Property	Value	Source
Space group	P 41 21 2	Depositor
Cell constants a, b, c, α , β , γ	116.65Å 116.65Å 216.78Å 90.00° 90.00° 90.00°	Depositor
Resolution (Å)	20.00 – 3.29 19.92 – 3.30	Depositor EDS
% Data completeness (in resolution range)	96.9 (20.00-3.29) 97.4 (19.92-3.30)	Depositor EDS
R_{merge}	0.13	Depositor
R_{sym}	(Not available)	Depositor
$\langle I/\sigma(I) \rangle$ ¹	4.62 (at 3.29Å)	Xtrriage
Refinement program	REFMAC 5.1.24	Depositor
R, R_{free}	0.205 , 0.262 0.180 , (Not available)	Depositor DCC
R_{free} test set	No test flags present.	wwPDB-VP
Wilson B-factor (Å ²)	48.5	Xtrriage
Anisotropy	0.036	Xtrriage
Bulk solvent k_{sol} (e/Å ³), B_{sol} (Å ²)	0.33 , 50.5	EDS
L-test for twinning ²	$\langle L \rangle = 0.49$, $\langle L^2 \rangle = 0.32$	Xtrriage
Estimated twinning fraction	No twinning to report.	Xtrriage
F_o, F_c correlation	0.93	EDS
Total number of atoms	6587	wwPDB-VP
Average B, all atoms (Å ²)	20.0	wwPDB-VP

Xtrriage's analysis on translational NCS is as follows: *The largest off-origin peak in the Patterson function is 3.33% of the height of the origin peak. No significant pseudotranslation is detected.*

¹Intensities estimated from amplitudes.

²Theoretical values of $\langle |L| \rangle$, $\langle L^2 \rangle$ for acentric reflections are 0.5, 0.333 respectively for untwinned datasets, and 0.375, 0.2 for perfectly twinned datasets.

5 Model quality [i](#)

5.1 Standard geometry [i](#)

Bond lengths and bond angles in the following residue types are not validated in this section: PO4, CO8

The Z score for a bond length (or angle) is the number of standard deviations the observed value is removed from the expected value. A bond length (or angle) with $|Z| > 5$ is considered an outlier worth inspection. RMSZ is the root-mean-square of all Z scores of the bond lengths (or angles).

Mol	Chain	Bond lengths		Bond angles	
		RMSZ	# Z >5	RMSZ	# Z >5
1	A	1.30	2/2181 (0.1%)	1.33	10/2947 (0.3%)
1	B	1.27	3/2196 (0.1%)	1.61	16/2966 (0.5%)
1	C	1.04	1/2160 (0.0%)	0.98	11/2919 (0.4%)
All	All	1.21	6/6537 (0.1%)	1.33	37/8832 (0.4%)

Chiral center outliers are detected by calculating the chiral volume of a chiral center and verifying if the center is modelled as a planar moiety or with the opposite hand. A planarity outlier is detected by checking planarity of atoms in a peptide group, atoms in a mainchain group or atoms of a sidechain that are expected to be planar.

Mol	Chain	#Chirality outliers	#Planarity outliers
1	A	0	3
1	B	0	5
1	C	0	2
All	All	0	10

The worst 5 of 6 bond length outliers are listed below:

Mol	Chain	Res	Type	Atoms	Z	Observed(Å)	Ideal(Å)
1	A	270	GLN	C-O	46.03	2.10	1.23
1	B	72	PHE	C-N	-45.04	0.30	1.34
1	C	84	ASN	C-N	-43.22	0.34	1.34
1	A	84	ASN	C-N	-32.29	0.59	1.34
1	B	79	GLN	C-N	-25.61	0.86	1.33

The worst 5 of 37 bond angle outliers are listed below:

Mol	Chain	Res	Type	Atoms	Z	Observed(°)	Ideal(°)
1	B	71	ASP	O-C-N	-66.27	16.67	122.70
1	A	270	GLN	CA-C-N	-39.69	29.89	117.20

Continued on next page...

Continued from previous page...

Mol	Chain	Res	Type	Atoms	Z	Observed(°)	Ideal(°)
1	A	270	GLN	C-N-CA	-29.65	47.57	121.70
1	B	72	PHE	O-C-N	-28.65	76.86	122.70
1	A	270	GLN	O-C-N	-25.87	81.30	122.70

There are no chirality outliers.

5 of 10 planarity outliers are listed below:

Mol	Chain	Res	Type	Group
1	A	270	GLN	Mainchain
1	A	79	GLN	Mainchain
1	A	84	ASN	Mainchain
1	B	71	ASP	Mainchain
1	B	72	PHE	Mainchain

5.2 Too-close contacts [i](#)

In the following table, the Non-H and H(model) columns list the number of non-hydrogen atoms and hydrogen atoms in the chain respectively. The H(added) column lists the number of hydrogen atoms added and optimized by MolProbity. The Clashes column lists the number of clashes within the asymmetric unit, whereas Symm-Clashes lists symmetry-related clashes.

Mol	Chain	Non-H	H(model)	H(added)	Clashes	Symm-Clashes
1	A	2135	0	2125	43	0
1	B	2150	0	2142	47	0
1	C	2114	0	2106	40	0
2	A	10	0	0	0	0
2	C	5	0	0	0	0
3	A	57	0	46	5	0
3	B	57	0	46	8	0
3	C	57	0	46	5	0
4	B	2	0	0	0	0
All	All	6587	0	6511	133	0

The all-atom clashscore is defined as the number of clashes found per 1000 atoms (including hydrogen atoms). The all-atom clashscore for this structure is 10.

The worst 5 of 133 close contacts within the same asymmetric unit are listed below, sorted by their clash magnitude.

Atom-1	Atom-2	Interatomic distance (Å)	Clash overlap (Å)
3:C:302:CO8:O9P	3:C:302:CO8:C9P	1.80	1.29

Continued on next page...

Continued from previous page...

Atom-1	Atom-2	Interatomic distance (Å)	Clash overlap (Å)
3:B:301:CO8:OAP	3:B:301:CO8:CAP	1.80	1.29
3:A:300:CO8:O9P	3:A:300:CO8:C9P	1.81	1.28
3:C:302:CO8:OAP	3:C:302:CO8:CAP	1.80	1.27
3:A:300:CO8:CAP	3:A:300:CO8:OAP	1.80	1.27

There are no symmetry-related clashes.

5.3 Torsion angles [i](#)

5.3.1 Protein backbone [i](#)

In the following table, the Percentiles column shows the percent Ramachandran outliers of the chain as a percentile score with respect to all X-ray entries followed by that with respect to entries of similar resolution.

The Analysed column shows the number of residues for which the backbone conformation was analysed, and the total number of residues.

Mol	Chain	Analysed	Favoured	Allowed	Outliers	Percentiles	
1	A	267/280 (95%)	240 (90%)	23 (9%)	4 (2%)	10	38
1	B	269/280 (96%)	248 (92%)	17 (6%)	4 (2%)	10	38
1	C	264/280 (94%)	245 (93%)	16 (6%)	3 (1%)	14	45
All	All	800/840 (95%)	733 (92%)	56 (7%)	11 (1%)	11	38

5 of 11 Ramachandran outliers are listed below:

Mol	Chain	Res	Type
1	A	271	LEU
1	B	73	LYS
1	B	85	LYS
1	B	72	PHE
1	A	67	SER

5.3.2 Protein sidechains [i](#)

In the following table, the Percentiles column shows the percent sidechain outliers of the chain as a percentile score with respect to all X-ray entries followed by that with respect to entries of similar resolution.

The Analysed column shows the number of residues for which the sidechain conformation was

analysed, and the total number of residues.

Mol	Chain	Analysed	Rotameric	Outliers	Percentiles	
1	A	234/245 (96%)	204 (87%)	30 (13%)	4	18
1	B	236/245 (96%)	208 (88%)	28 (12%)	5	21
1	C	232/245 (95%)	196 (84%)	36 (16%)	2	12
All	All	702/735 (96%)	608 (87%)	94 (13%)	4	16

5 of 94 residues with a non-rotameric sidechain are listed below:

Mol	Chain	Res	Type
1	B	270	GLN
1	C	147	LEU
1	C	14	ARG
1	C	79	GLN
1	C	173	THR

Sometimes sidechains can be flipped to improve hydrogen bonding and reduce clashes. 5 of 11 such sidechains are listed below:

Mol	Chain	Res	Type
1	C	26	ASN
1	C	29	ASN
1	C	205	ASN
1	C	198	ASN
1	B	198	ASN

5.3.3 RNA [i](#)

There are no RNA molecules in this entry.

5.4 Non-standard residues in protein, DNA, RNA chains [i](#)

There are no non-standard protein/DNA/RNA residues in this entry.

5.5 Carbohydrates [i](#)

There are no monosaccharides in this entry.

5.6 Ligand geometry

6 ligands are modelled in this entry.

In the following table, the Counts columns list the number of bonds (or angles) for which Mogul statistics could be retrieved, the number of bonds (or angles) that are observed in the model and the number of bonds (or angles) that are defined in the Chemical Component Dictionary. The Link column lists molecule types, if any, to which the group is linked. The Z score for a bond length (or angle) is the number of standard deviations the observed value is removed from the expected value. A bond length (or angle) with $|Z| > 2$ is considered an outlier worth inspection. RMSZ is the root-mean-square of all Z scores of the bond lengths (or angles).

Mol	Type	Chain	Res	Link	Bond lengths			Bond angles		
					Counts	RMSZ	# Z > 2	Counts	RMSZ	# Z > 2
2	PO4	C	281	-	4,4,4	0.86	0	6,6,6	0.43	0
3	CO8	C	302	-	51,59,59	5.10	6 (11%)	62,85,85	1.33	4 (6%)
3	CO8	B	301	-	51,59,59	5.11	6 (11%)	62,85,85	1.39	5 (8%)
2	PO4	A	282	-	4,4,4	0.94	0	6,6,6	0.29	0
3	CO8	A	300	-	51,59,59	5.10	6 (11%)	62,85,85	1.39	5 (8%)
2	PO4	A	281	-	4,4,4	1.00	0	6,6,6	0.45	0

In the following table, the Chirals column lists the number of chiral outliers, the number of chiral centers analysed, the number of these observed in the model and the number defined in the Chemical Component Dictionary. Similar counts are reported in the Torsion and Rings columns. '-' means no outliers of that kind were identified.

Mol	Type	Chain	Res	Link	Chirals	Torsions	Rings
3	CO8	A	300	-	-	21/54/74/74	0/3/3/3
3	CO8	B	301	-	-	22/54/74/74	0/3/3/3
3	CO8	C	302	-	-	20/54/74/74	0/3/3/3

The worst 5 of 18 bond length outliers are listed below:

Mol	Chain	Res	Type	Atoms	Z	Observed(Å)	Ideal(Å)
3	A	300	CO8	O9P-C9P	28.96	1.81	1.23
3	B	301	CO8	O9P-C9P	28.96	1.81	1.23
3	C	302	CO8	O9P-C9P	28.86	1.80	1.23
3	B	301	CO8	OAP-CAP	20.93	1.80	1.42
3	C	302	CO8	OAP-CAP	20.88	1.80	1.42

The worst 5 of 14 bond angle outliers are listed below:

Mol	Chain	Res	Type	Atoms	Z	Observed(°)	Ideal(°)
3	B	301	CO8	C2'-C1'-S1P	5.73	120.12	113.46

Continued on next page...

Continued from previous page...

Mol	Chain	Res	Type	Atoms	Z	Observed(°)	Ideal(°)
3	A	300	CO8	C2'-C1'-S1P	5.60	119.98	113.46
3	C	302	CO8	N3A-C2A-N1A	-5.32	120.36	128.68
3	B	301	CO8	N3A-C2A-N1A	-5.24	120.49	128.68
3	A	300	CO8	N3A-C2A-N1A	-5.12	120.67	128.68

There are no chirality outliers.

5 of 63 torsion outliers are listed below:

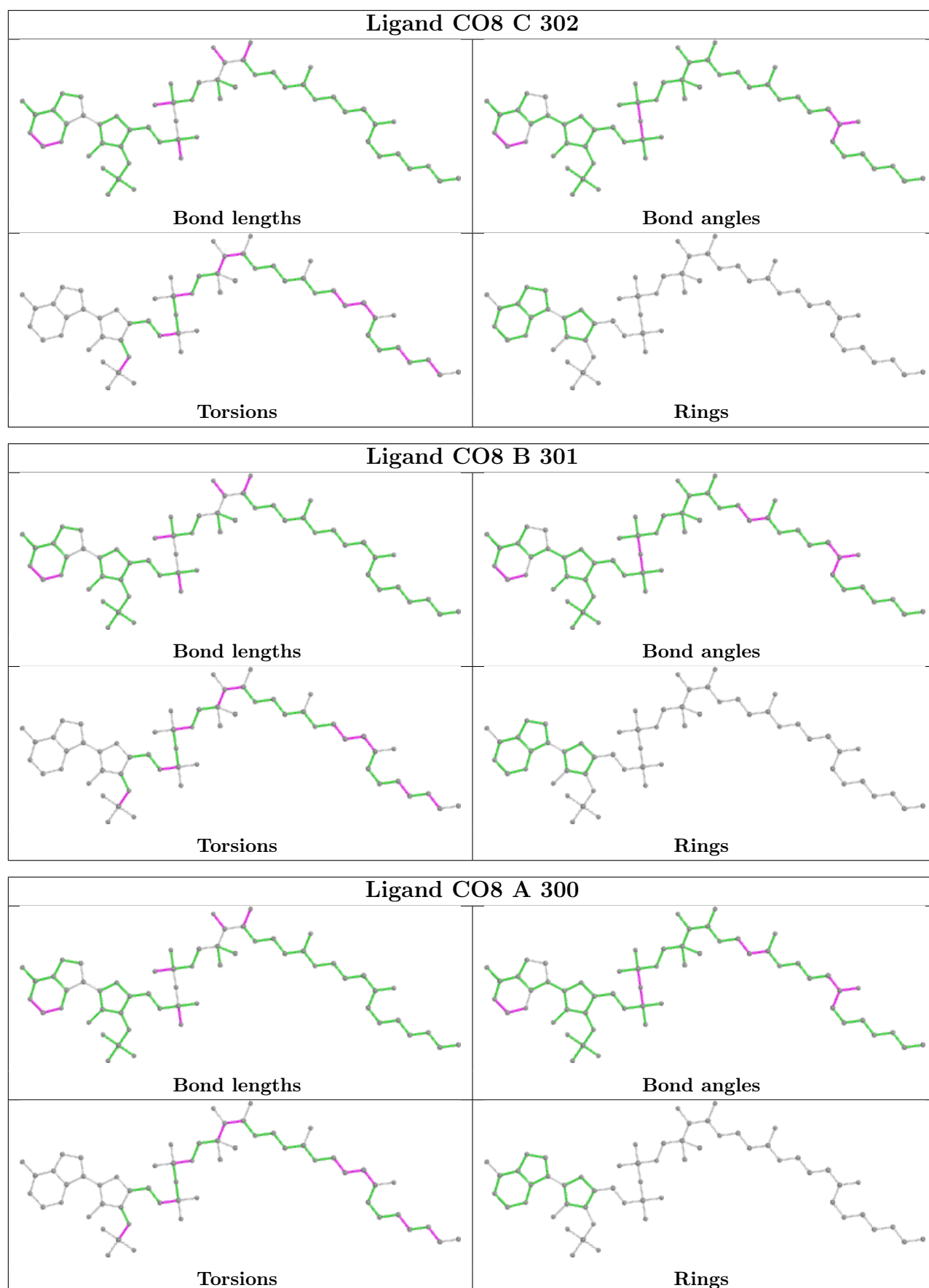
Mol	Chain	Res	Type	Atoms
3	A	300	CO8	C5B-O5B-P1A-O1A
3	A	300	CO8	CCP-O6A-P2A-O4A
3	A	300	CO8	OAP-CAP-CBP-CCP
3	A	300	CO8	OAP-CAP-CBP-CEP
3	A	300	CO8	S1P-C2P-C3P-N4P

There are no ring outliers.

3 monomers are involved in 18 short contacts:

Mol	Chain	Res	Type	Clashes	Symm-Clashes
3	C	302	CO8	5	0
3	B	301	CO8	8	0
3	A	300	CO8	5	0

The following is a two-dimensional graphical depiction of Mogul quality analysis of bond lengths, bond angles, torsion angles, and ring geometry for all instances of the Ligand of Interest. In addition, ligands with molecular weight > 250 and outliers as shown on the validation Tables will also be included. For torsion angles, if less than 5% of the Mogul distribution of torsion angles is within 10 degrees of the torsion angle in question, then that torsion angle is considered an outlier. Any bond that is central to one or more torsion angles identified as an outlier by Mogul will be highlighted in the graph. For rings, the root-mean-square deviation (RMSD) between the ring in question and similar rings identified by Mogul is calculated over all ring torsion angles. If the average RMSD is greater than 60 degrees and the minimal RMSD between the ring in question and any Mogul-identified rings is also greater than 60 degrees, then that ring is considered an outlier. The outliers are highlighted in purple. The color gray indicates Mogul did not find sufficient equivalents in the CSD to analyse the geometry.



5.7 Other polymers [i](#)

There are no such residues in this entry.

5.8 Polymer linkage issues [i](#)

The following chains have linkage breaks:

Mol	Chain	Number of breaks
1	B	3
1	A	1
1	C	1

All chain breaks are listed below:

Model	Chain	Residue-1	Atom-1	Residue-2	Atom-2	Distance (Å)
1	B	84:ASN	C	85:LYS	N	0.91
1	B	79:GLN	C	80:GLY	N	0.86
1	A	84:ASN	C	85:LYS	N	0.59
1	C	84:ASN	C	85:LYS	N	0.34
1	B	72:PHE	C	73:LYS	N	0.30

6 Fit of model and data [i](#)

6.1 Protein, DNA and RNA chains [i](#)

In the following table, the column labelled ‘#RSRZ> 2’ contains the number (and percentage) of RSRZ outliers, followed by percent RSRZ outliers for the chain as percentile scores relative to all X-ray entries and entries of similar resolution. The OWAB column contains the minimum, median, 95th percentile and maximum values of the occupancy-weighted average B-factor per residue. The column labelled ‘Q< 0.9’ lists the number of (and percentage) of residues with an average occupancy less than 0.9.

Mol	Chain	Analysed	<RSRZ>	#RSRZ>2	OWAB(Å ²)	Q<0.9
1	A	262/280 (93%)	-0.73	0 100 100	5, 16, 36, 60	1 (0%)
1	B	261/280 (93%)	-0.78	0 100 100	5, 16, 37, 58	0
1	C	261/280 (93%)	-0.69	0 100 100	9, 19, 38, 55	0
All	All	784/840 (93%)	-0.73	0 100 100	5, 16, 38, 60	1 (0%)

There are no RSRZ outliers to report.

6.2 Non-standard residues in protein, DNA, RNA chains [i](#)

There are no non-standard protein/DNA/RNA residues in this entry.

6.3 Carbohydrates [i](#)

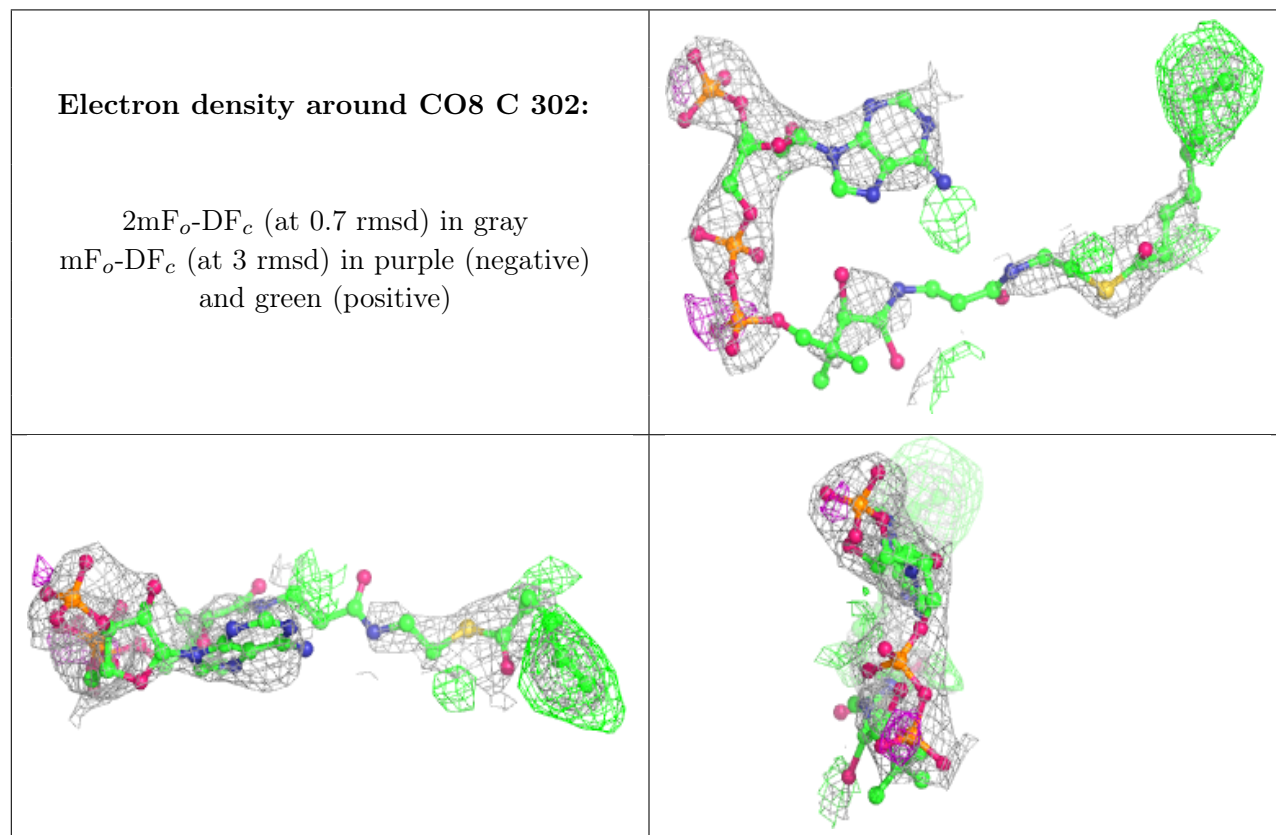
There are no monosaccharides in this entry.

6.4 Ligands [i](#)

In the following table, the Atoms column lists the number of modelled atoms in the group and the number defined in the chemical component dictionary. The B-factors column lists the minimum, median, 95th percentile and maximum values of B factors of atoms in the group. The column labelled ‘Q< 0.9’ lists the number of atoms with occupancy less than 0.9.

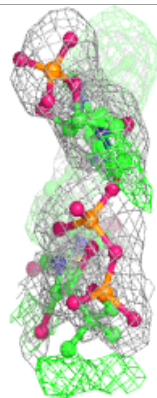
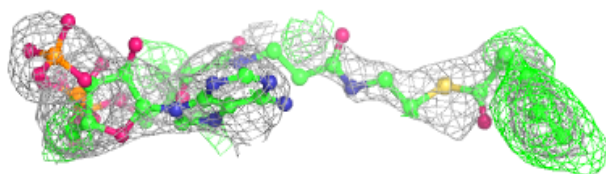
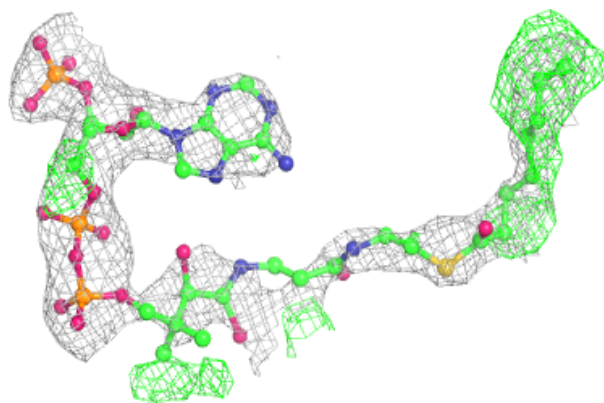
Mol	Type	Chain	Res	Atoms	RSCC	RSR	B-factors(Å ²)	Q<0.9
3	CO8	C	302	57/57	0.70	0.42	55,56,57,58	57
3	CO8	B	301	57/57	0.76	0.37	55,56,57,58	57
3	CO8	A	300	57/57	0.78	0.37	55,56,57,58	57
2	PO4	C	281	5/5	0.91	0.29	54,54,55,55	5
2	PO4	A	282	5/5	0.91	0.33	52,53,53,53	5
2	PO4	A	281	5/5	0.92	0.29	78,79,79,79	5

The following is a graphical depiction of the model fit to experimental electron density of all instances of the Ligand of Interest. In addition, ligands with molecular weight > 250 and outliers as shown on the geometry validation Tables will also be included. Each fit is shown from different orientation to approximate a three-dimensional view.

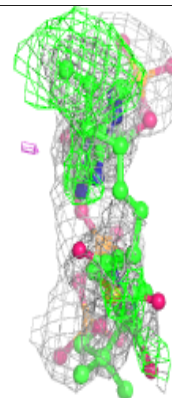
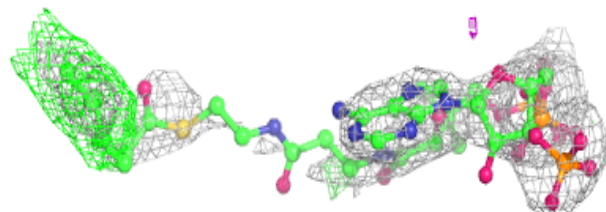
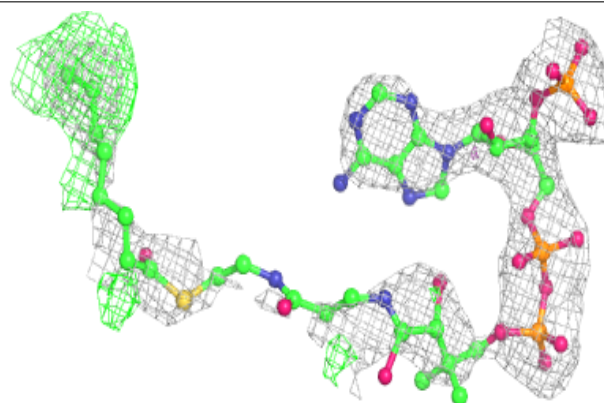


Electron density around CO8 B 301:

$2mF_o-DF_c$ (at 0.7 rmsd) in gray
 mF_o-DF_c (at 3 rmsd) in purple (negative)
and green (positive)

**Electron density around CO8 A 300:**

$2mF_o-DF_c$ (at 0.7 rmsd) in gray
 mF_o-DF_c (at 3 rmsd) in purple (negative)
and green (positive)



6.5 Other polymers

There are no such residues in this entry.