



wwPDB X-ray Structure Validation Summary Report ⓘ

Oct 10, 2023 – 04:29 PM EDT

PDB ID : 7K1E
Title : Crystal structure of human insulin degrading enzyme (IDE) in complex with compound BDM_88646
Authors : Liang, W.G.; Deprez, R.; Bosc, D.; Tang, W.
Deposited on : 2020-09-07
Resolution : 2.80 Å (reported)

This is a wwPDB X-ray Structure Validation Summary Report for a publicly released PDB entry.

We welcome your comments at validation@mail.wwpdb.org

A user guide is available at

<https://www.wwpdb.org/validation/2017/XrayValidationReportHelp>

with specific help available everywhere you see the ⓘ symbol.

The types of validation reports are described at

<http://www.wwpdb.org/validation/2017/FAQs#types>.

The following versions of software and data (see [references ⓘ](#)) were used in the production of this report:

MolProbity : 4.02b-467
Mogul : 1.8.5 (274361), CSD as541be (2020)
Xtriage (Phenix) : 1.13
EDS : 2.35.1
buster-report : 1.1.7 (2018)
Percentile statistics : 20191225.v01 (using entries in the PDB archive December 25th 2019)
Refmac : 5.8.0158
CCP4 : 7.0.044 (Gargrove)
Ideal geometry (proteins) : Engh & Huber (2001)
Ideal geometry (DNA, RNA) : Parkinson et al. (1996)
Validation Pipeline (wwPDB-VP) : 2.35.1

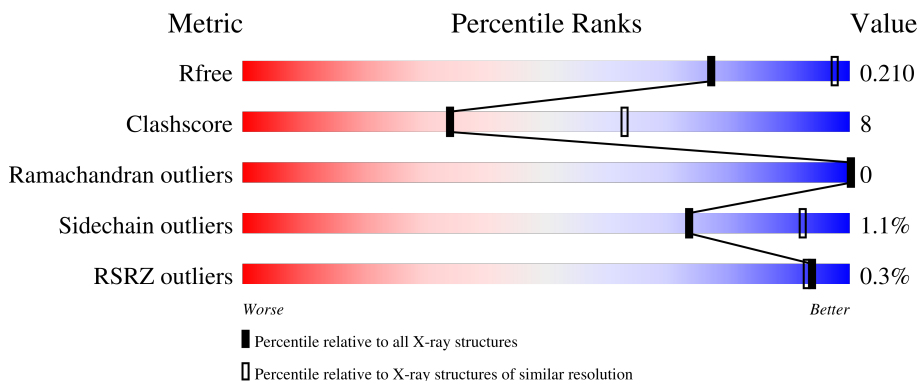
1 Overall quality at a glance

The following experimental techniques were used to determine the structure:

X-RAY DIFFRACTION



The reported resolution of this entry is 2.80 Å.

Percentile scores (ranging between 0-100) for global validation metrics of the entry are shown in the following graphic. The table shows the number of entries on which the scores are based.



Metric	Whole archive (#Entries)	Similar resolution (#Entries, resolution range(Å))
R_{free}	130704	3140 (2.80-2.80)
Clashscore	141614	3569 (2.80-2.80)
Ramachandran outliers	138981	3498 (2.80-2.80)
Sidechain outliers	138945	3500 (2.80-2.80)
RSRZ outliers	127900	3078 (2.80-2.80)

The table below summarises the geometric issues observed across the polymeric chains and their fit to the electron density. The red, orange, yellow and green segments of the lower bar indicate the fraction of residues that contain outliers for ≥ 3 , 2, 1 and 0 types of geometric quality criteria respectively. A grey segment represents the fraction of residues that are not modelled. The numeric value for each fraction is indicated below the corresponding segment, with a dot representing fractions $\leq 5\%$. The upper red bar (where present) indicates the fraction of residues that have poor fit to the electron density. The numeric value is given above the bar.

Mol	Chain	Length	Quality of chain
1	A	990	 77% 19%
1	B	990	 82% 15%

2 Entry composition [i](#)

There are 6 unique types of molecules in this entry. The entry contains 16116 atoms, of which 82 are hydrogens and 0 are deuteriums.

In the tables below, the ZeroOcc column contains the number of atoms modelled with zero occupancy, the AltConf column contains the number of residues with at least one atom in alternate conformation and the Trace column contains the number of residues modelled with at most 2 atoms.

- Molecule 1 is a protein called Insulin-degrading enzyme.

Mol	Chain	Residues	Atoms					ZeroOcc	AltConf	Trace
			Total	C	N	O	S			
1	A	957	7829	5042	1314	1451	22	0	0	0
1	B	960	7848	5054	1317	1454	23	0	0	0

There are 50 discrepancies between the modelled and reference sequences:

Chain	Residue	Modelled	Actual	Comment	Reference
A	30	MET	-	initiating methionine	UNP P14735
A	31	HIS	-	expression tag	UNP P14735
A	32	HIS	-	expression tag	UNP P14735
A	33	HIS	-	expression tag	UNP P14735
A	34	HIS	-	expression tag	UNP P14735
A	35	HIS	-	expression tag	UNP P14735
A	36	HIS	-	expression tag	UNP P14735
A	37	ALA	-	expression tag	UNP P14735
A	38	ALA	-	expression tag	UNP P14735
A	39	GLY	-	expression tag	UNP P14735
A	40	ILE	-	expression tag	UNP P14735
A	41	PRO	-	expression tag	UNP P14735
A	110	LEU	CYS	engineered mutation	UNP P14735
A	171	SER	CYS	engineered mutation	UNP P14735
A	178	ALA	CYS	engineered mutation	UNP P14735
A	257	VAL	CYS	engineered mutation	UNP P14735
A	414	LEU	CYS	engineered mutation	UNP P14735
A	573	ASN	CYS	engineered mutation	UNP P14735
A	590	SER	CYS	engineered mutation	UNP P14735
A	789	SER	CYS	engineered mutation	UNP P14735
A	812	ALA	CYS	engineered mutation	UNP P14735
A	819	ALA	CYS	engineered mutation	UNP P14735
A	904	SER	CYS	engineered mutation	UNP P14735
A	966	ASN	CYS	engineered mutation	UNP P14735
A	974	ALA	CYS	engineered mutation	UNP P14735

Continued on next page...

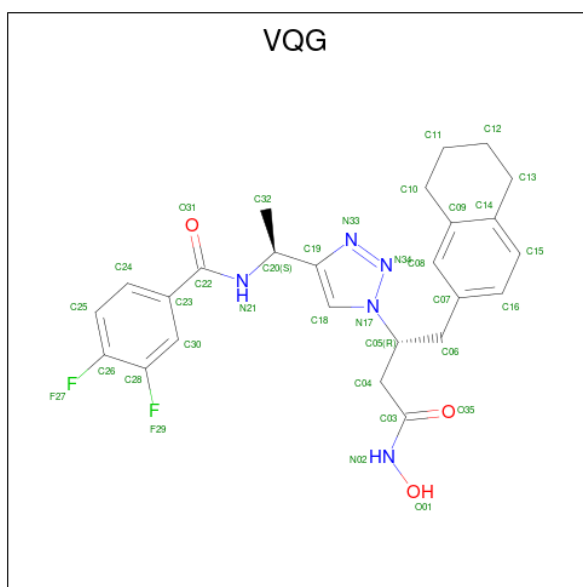
Continued from previous page...

Chain	Residue	Modelled	Actual	Comment	Reference
B	30	MET	-	initiating methionine	UNP P14735
B	31	HIS	-	expression tag	UNP P14735
B	32	HIS	-	expression tag	UNP P14735
B	33	HIS	-	expression tag	UNP P14735
B	34	HIS	-	expression tag	UNP P14735
B	35	HIS	-	expression tag	UNP P14735
B	36	HIS	-	expression tag	UNP P14735
B	37	ALA	-	expression tag	UNP P14735
B	38	ALA	-	expression tag	UNP P14735
B	39	GLY	-	expression tag	UNP P14735
B	40	ILE	-	expression tag	UNP P14735
B	41	PRO	-	expression tag	UNP P14735
B	110	LEU	CYS	engineered mutation	UNP P14735
B	171	SER	CYS	engineered mutation	UNP P14735
B	178	ALA	CYS	engineered mutation	UNP P14735
B	257	VAL	CYS	engineered mutation	UNP P14735
B	414	LEU	CYS	engineered mutation	UNP P14735
B	573	ASN	CYS	engineered mutation	UNP P14735
B	590	SER	CYS	engineered mutation	UNP P14735
B	789	SER	CYS	engineered mutation	UNP P14735
B	812	ALA	CYS	engineered mutation	UNP P14735
B	819	ALA	CYS	engineered mutation	UNP P14735
B	904	SER	CYS	engineered mutation	UNP P14735
B	966	ASN	CYS	engineered mutation	UNP P14735
B	974	ALA	CYS	engineered mutation	UNP P14735

- Molecule 2 is ZINC ION (three-letter code: ZN) (formula: Zn).

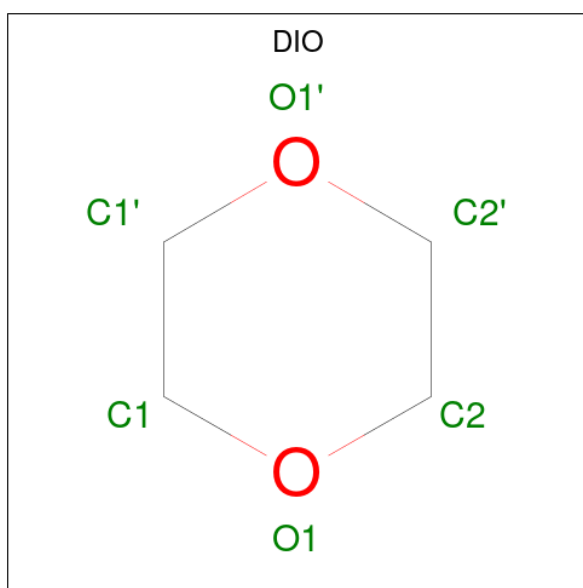
Mol	Chain	Residues	Atoms	ZeroOcc	AltConf
2	A	1	Total Zn 1 1	0	0
2	B	1	Total Zn 1 1	0	0

- Molecule 3 is 3,4-difluoro-N-[(1S)-1-{1-[(2R)-4-(hydroxyamino)-4-oxo-1-(5,6,7,8-tetrahydronaphthalen-2-yl)butan-2-yl]-1H-1,2,3-triazol-4-yl}ethyl]benzamide (three-letter code: VQG) (formula: C₂₅H₂₇F₂N₅O₃) (labeled as "Ligand of Interest" by depositor).



Mol	Chain	Residues	Atoms				ZeroOcc	AltConf	
			Total	C	F	N			O
3	A	1	35	25	2	5	3	0	0
3	B	1	35	25	2	5	3	0	0

- Molecule 4 is 1,4-DIETHYLENE DIOXIDE (three-letter code: DIO) (formula: C₄H₈O₂).



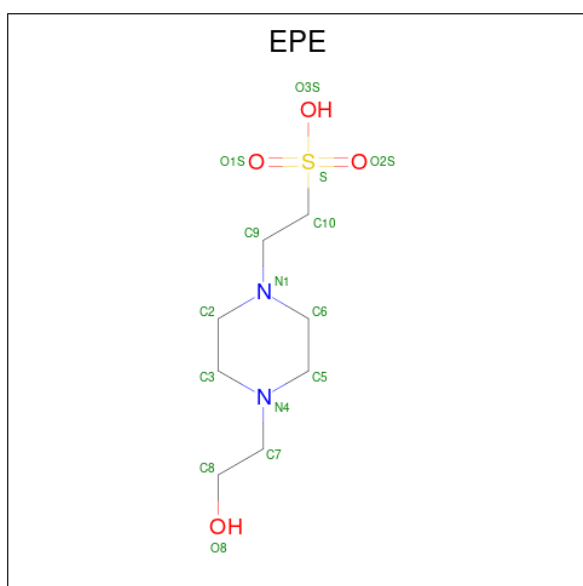
Mol	Chain	Residues	Atoms				ZeroOcc	AltConf
			Total	C	H	O		
4	A	1	14	4	8	2	0	0
4	A	1	14	4	8	2	0	0

Continued on next page...

Continued from previous page...

Mol	Chain	Residues	Atoms				ZeroOcc	AltConf
4	A	1	Total	C	H	O	0	0
			14	4	8	2		
4	B	1	Total	C	H	O	0	0
			14	4	8	2		
4	B	1	Total	C	H	O	0	0
			14	4	8	2		
4	B	1	Total	C	H	O	0	0
			14	4	8	2		

- Molecule 5 is 4-(2-HYDROXYETHYL)-1-PIPERAZINE ETHANESULFONIC ACID (three-letter code: EPE) (formula: C₈H₁₈N₂O₄S).



Mol	Chain	Residues	Atoms					ZeroOcc	AltConf	
5	A	1	Total	C	H	N	O	S	0	0
			32	8	17	2	4	1		
5	B	1	Total	C	H	N	O	S	0	0
			32	8	17	2	4	1		

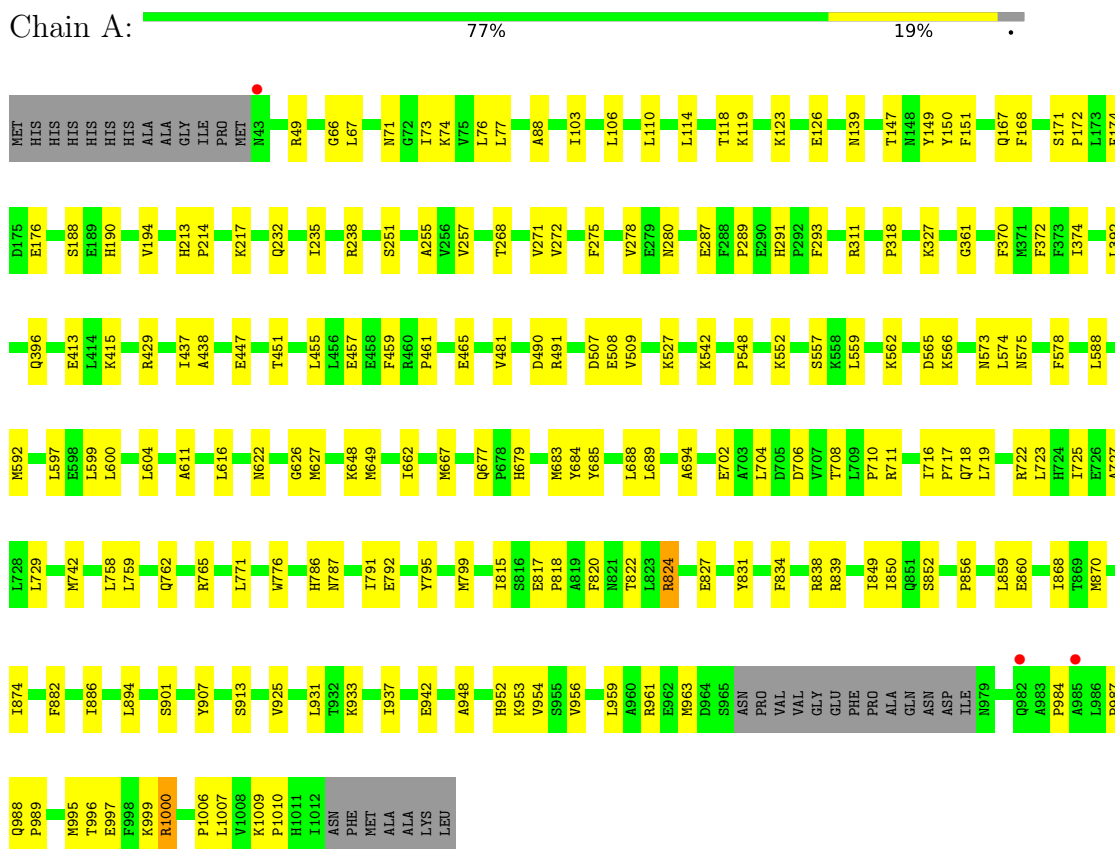
- Molecule 6 is water.

Mol	Chain	Residues	Atoms		ZeroOcc	AltConf
6	A	68	Total	O	0	0
			68	68		
6	B	151	Total	O	0	0
			151	151		

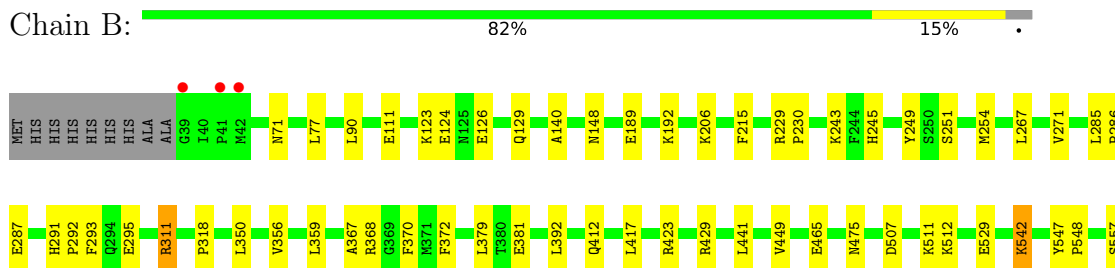
3 Residue-property plots

These plots are drawn for all protein, RNA, DNA and oligosaccharide chains in the entry. The first graphic for a chain summarises the proportions of the various outlier classes displayed in the second graphic. The second graphic shows the sequence view annotated by issues in geometry and electron density. Residues are color-coded according to the number of geometric quality criteria for which they contain at least one outlier: green = 0, yellow = 1, orange = 2 and red = 3 or more. A red dot above a residue indicates a poor fit to the electron density ($RSRZ > 2$). Stretches of 2 or more consecutive residues without any outlier are shown as a green connector. Residues present in the sample, but not in the model, are shown in grey.

- Molecule 1: Insulin-degrading enzyme



- Molecule 1: Insulin-degrading enzyme



W560	E702	I668	ASN
F561	L712	T669	PHE
K562	I716	M670	MET
E577	P717	E671	ALA
F578	R722	K672	ALA
F579	R725	S673	LYS
A583	I725	I674	LEU
Y594	H730	M677	
L597	Q736	A681	
E598	M742	F682	
L600	L749	G683	
L604	K756	K684	
Y607	Q770	Q915	
L616	R774	Y916	
S617	G775	K933	
Y618	W776	I937	
Q621	E792	Y946	
G626	I793	R951	
M627	Y794	R952	
S630	M799	K953	
M635	L808	S965	
D636	E817	ASN	PRD
K637	P818	VAL	VAL
Q638	A819	VAL	VAL
K643	F820	GLY	GLY
K644	T822	GLU	GLU
E647	L823	PHE	PHE
K648	R824	PRO	PRO
M649	E827	ALA	ALA
I654	Q828	GLN	GLN
R668	L829	ASN	ASN
L686	G830	ASP	ASP
R687	F834	ILE	ILE
L688	R838	M979	
L689	I843	P984	
A694	Q844	P989	
M695	G845	M995	
T696	L846	R1000	
E699	R847	F1005	
	A865	V1008	
		K1009	
		P1010	
		H1011	
		ILE	

4 Data and refinement statistics i

Property	Value	Source
Space group	P 65	Depositor
Cell constants a, b, c, α , β , γ	267.88Å 267.88Å 89.61Å 90.00° 90.00° 120.00°	Depositor
Resolution (Å)	43.84 – 2.80 44.65 – 2.79	Depositor EDS
% Data completeness (in resolution range)	98.6 (43.84-2.80) 91.4 (44.65-2.79)	Depositor EDS
R_{merge}	(Not available)	Depositor
R_{sym}	(Not available)	Depositor
$\langle I/\sigma(I) \rangle$ ¹	1.80 (at 2.77Å)	Xtrriage
Refinement program	PHENIX (1.18.2_3874)	Depositor
R, R_{free}	0.158 , 0.209 0.161 , 0.210	Depositor DCC
R_{free} test set	2013 reflections (2.25%)	wwPDB-VP
Wilson B-factor (Å ²)	42.5	Xtrriage
Anisotropy	0.020	Xtrriage
Bulk solvent k_{sol} (e/Å ³), B_{sol} (Å ²)	0.32 , 40.3	EDS
L-test for twinning ²	$\langle L \rangle = 0.49$, $\langle L^2 \rangle = 0.32$	Xtrriage
Estimated twinning fraction	0.027 for h,-h-k,-l	Xtrriage
F_o, F_c correlation	0.95	EDS
Total number of atoms	16116	wwPDB-VP
Average B, all atoms (Å ²)	42.0	wwPDB-VP

Xtrriage's analysis on translational NCS is as follows: *The largest off-origin peak in the Patterson function is 1.73% of the height of the origin peak. No significant pseudotranslation is detected.*

¹Intensities estimated from amplitudes.

²Theoretical values of $\langle |L| \rangle$, $\langle L^2 \rangle$ for acentric reflections are 0.5, 0.333 respectively for untwinned datasets, and 0.375, 0.2 for perfectly twinned datasets.

5 Model quality [i](#)

5.1 Standard geometry [i](#)

Bond lengths and bond angles in the following residue types are not validated in this section: ZN, DIO, VQG, EPE

The Z score for a bond length (or angle) is the number of standard deviations the observed value is removed from the expected value. A bond length (or angle) with $|Z| > 5$ is considered an outlier worth inspection. RMSZ is the root-mean-square of all Z scores of the bond lengths (or angles).

Mol	Chain	Bond lengths		Bond angles	
		RMSZ	# Z >5	RMSZ	# Z >5
1	A	0.61	0/8024	0.71	0/10854
1	B	0.63	0/8044	0.74	0/10881
All	All	0.62	0/16068	0.73	0/21735

There are no bond length outliers.

There are no bond angle outliers.

There are no chirality outliers.

There are no planarity outliers.

5.2 Too-close contacts [i](#)

In the following table, the Non-H and H(model) columns list the number of non-hydrogen atoms and hydrogen atoms in the chain respectively. The H(added) column lists the number of hydrogen atoms added and optimized by MolProbity. The Clashes column lists the number of clashes within the asymmetric unit, whereas Symm-Clashes lists symmetry-related clashes.

Mol	Chain	Non-H	H(model)	H(added)	Clashes	Symm-Clashes
1	A	7829	0	7769	161	0
1	B	7848	0	7788	105	0
2	A	1	0	0	0	0
2	B	1	0	0	0	0
3	A	35	0	0	0	0
3	B	35	0	0	0	0
4	A	18	24	24	2	0
4	B	18	24	24	1	0
5	A	15	17	17	1	0
5	B	15	17	17	0	0
6	A	68	0	0	1	0

Continued on next page...

Continued from previous page...

Mol	Chain	Non-H	H(model)	H(added)	Clashes	Symm-Clashes
6	B	151	0	0	4	0
All	All	16034	82	15639	263	0

The all-atom clashscore is defined as the number of clashes found per 1000 atoms (including hydrogen atoms). The all-atom clashscore for this structure is 8.

The worst 5 of 263 close contacts within the same asymmetric unit are listed below, sorted by their clash magnitude.

Atom-1	Atom-2	Interatomic distance (Å)	Clash overlap (Å)
1:A:684:TYR:CZ	1:A:688:LEU:HD11	1.87	1.08
1:A:689:LEU:HG	1:A:995:MET:CE	1.93	0.98
1:A:268:THR:O	1:A:272:VAL:HG23	1.65	0.97
1:A:574:LEU:HD22	1:A:729:LEU:HD22	1.49	0.94
1:B:392:LEU:HD22	1:B:512:LYS:HE3	1.50	0.94

There are no symmetry-related clashes.

5.3 Torsion angles [i](#)

5.3.1 Protein backbone [i](#)

In the following table, the Percentiles column shows the percent Ramachandran outliers of the chain as a percentile score with respect to all X-ray entries followed by that with respect to entries of similar resolution.

The Analysed column shows the number of residues for which the backbone conformation was analysed, and the total number of residues.

Mol	Chain	Analysed	Favoured	Allowed	Outliers	Percentiles	
1	A	953/990 (96%)	916 (96%)	37 (4%)	0	100	100
1	B	956/990 (97%)	929 (97%)	27 (3%)	0	100	100
All	All	1909/1980 (96%)	1845 (97%)	64 (3%)	0	100	100

There are no Ramachandran outliers to report.

5.3.2 Protein sidechains [i](#)

In the following table, the Percentiles column shows the percent sidechain outliers of the chain as a percentile score with respect to all X-ray entries followed by that with respect to entries of similar

resolution.

The Analysed column shows the number of residues for which the sidechain conformation was analysed, and the total number of residues.

Mol	Chain	Analysed	Rotameric	Outliers	Percentiles	
1	A	853/879 (97%)	847 (99%)	6 (1%)	84	95
1	B	855/879 (97%)	842 (98%)	13 (2%)	65	89
All	All	1708/1758 (97%)	1689 (99%)	19 (1%)	73	92

5 of 19 residues with a non-rotameric sidechain are listed below:

Mol	Chain	Res	Type
1	B	621	GLN
1	B	824	ARG
1	B	1009	LYS
1	B	774	ARG
1	B	311	ARG

Sometimes sidechains can be flipped to improve hydrogen bonding and reduce clashes. All (3) such sidechains are listed below:

Mol	Chain	Res	Type
1	A	718	GLN
1	B	781	GLN
1	B	993	GLN

5.3.3 RNA [i](#)

There are no RNA molecules in this entry.

5.4 Non-standard residues in protein, DNA, RNA chains [i](#)

There are no non-standard protein/DNA/RNA residues in this entry.

5.5 Carbohydrates [i](#)

There are no monosaccharides in this entry.

5.6 Ligand geometry [i](#)

Of 12 ligands modelled in this entry, 2 are monoatomic - leaving 10 for Mogul analysis.

In the following table, the Counts columns list the number of bonds (or angles) for which Mogul statistics could be retrieved, the number of bonds (or angles) that are observed in the model and the number of bonds (or angles) that are defined in the Chemical Component Dictionary. The Link column lists molecule types, if any, to which the group is linked. The Z score for a bond length (or angle) is the number of standard deviations the observed value is removed from the expected value. A bond length (or angle) with $|Z| > 2$ is considered an outlier worth inspection. RMSZ is the root-mean-square of all Z scores of the bond lengths (or angles).

Mol	Type	Chain	Res	Link	Bond lengths			Bond angles		
					Counts	RMSZ	# Z > 2	Counts	RMSZ	# Z > 2
4	DIO	A	1103	-	6,6,6	0.71	0	6,6,6	0.67	0
4	DIO	B	1103	-	6,6,6	0.71	0	6,6,6	0.63	0
5	EPE	A	1106	-	15,15,15	1.00	1 (6%)	18,20,20	2.06	5 (27%)
4	DIO	A	1104	-	6,6,6	0.71	0	6,6,6	1.47	1 (16%)
3	VQG	A	1102	2	38,38,38	2.64	8 (21%)	43,53,53	1.20	3 (6%)
4	DIO	B	1105	-	6,6,6	0.71	0	6,6,6	0.70	0
4	DIO	A	1105	-	6,6,6	0.74	0	6,6,6	0.64	0
5	EPE	B	1106	-	15,15,15	1.06	1 (6%)	18,20,20	1.97	4 (22%)
4	DIO	B	1104	-	6,6,6	0.74	0	6,6,6	1.29	2 (33%)
3	VQG	B	1102	2	38,38,38	3.40	7 (18%)	43,53,53	2.27	11 (25%)

In the following table, the Chirals column lists the number of chiral outliers, the number of chiral centers analysed, the number of these observed in the model and the number defined in the Chemical Component Dictionary. Similar counts are reported in the Torsion and Rings columns. '-' means no outliers of that kind were identified.

Mol	Type	Chain	Res	Link	Chirals	Torsions	Rings
4	DIO	A	1103	-	-	-	0/1/1/1
4	DIO	B	1103	-	-	-	0/1/1/1
5	EPE	A	1106	-	-	6/9/19/19	0/1/1/1
4	DIO	A	1104	-	-	-	0/1/1/1
3	VQG	A	1102	2	-	2/20/33/33	0/4/4/4
4	DIO	B	1105	-	-	-	0/1/1/1
4	DIO	A	1105	-	-	-	0/1/1/1
5	EPE	B	1106	-	-	6/9/19/19	0/1/1/1
4	DIO	B	1104	-	-	-	0/1/1/1
3	VQG	B	1102	2	-	2/20/33/33	0/4/4/4

The worst 5 of 17 bond length outliers are listed below:

Mol	Chain	Res	Type	Atoms	Z	Observed(Å)	Ideal(Å)
3	B	1102	VQG	C03-N02	17.80	1.51	1.32

Continued on next page...

Continued from previous page...

Mol	Chain	Res	Type	Atoms	Z	Observed(Å)	Ideal(Å)
3	A	1102	VQG	C03-N02	11.90	1.45	1.32
3	B	1102	VQG	C18-C19	5.82	1.45	1.36
3	B	1102	VQG	C22-N21	5.63	1.46	1.34
3	A	1102	VQG	C18-C19	5.54	1.44	1.36

The worst 5 of 26 bond angle outliers are listed below:

Mol	Chain	Res	Type	Atoms	Z	Observed(°)	Ideal(°)
3	B	1102	VQG	O35-C03-C04	-7.64	110.31	121.50
3	B	1102	VQG	C04-C03-N02	6.80	125.45	115.14
3	B	1102	VQG	O01-N02-C03	-5.01	112.39	119.79
5	A	1106	EPE	C5-N4-C3	5.00	120.09	108.83
5	B	1106	EPE	C5-N4-C3	4.57	119.12	108.83

There are no chirality outliers.

5 of 16 torsion outliers are listed below:

Mol	Chain	Res	Type	Atoms
3	A	1102	VQG	C03-C04-C05-C06
3	A	1102	VQG	C03-C04-C05-N17
3	B	1102	VQG	C03-C04-C05-C06
3	B	1102	VQG	C03-C04-C05-N17
5	A	1106	EPE	C9-C10-S-O2S

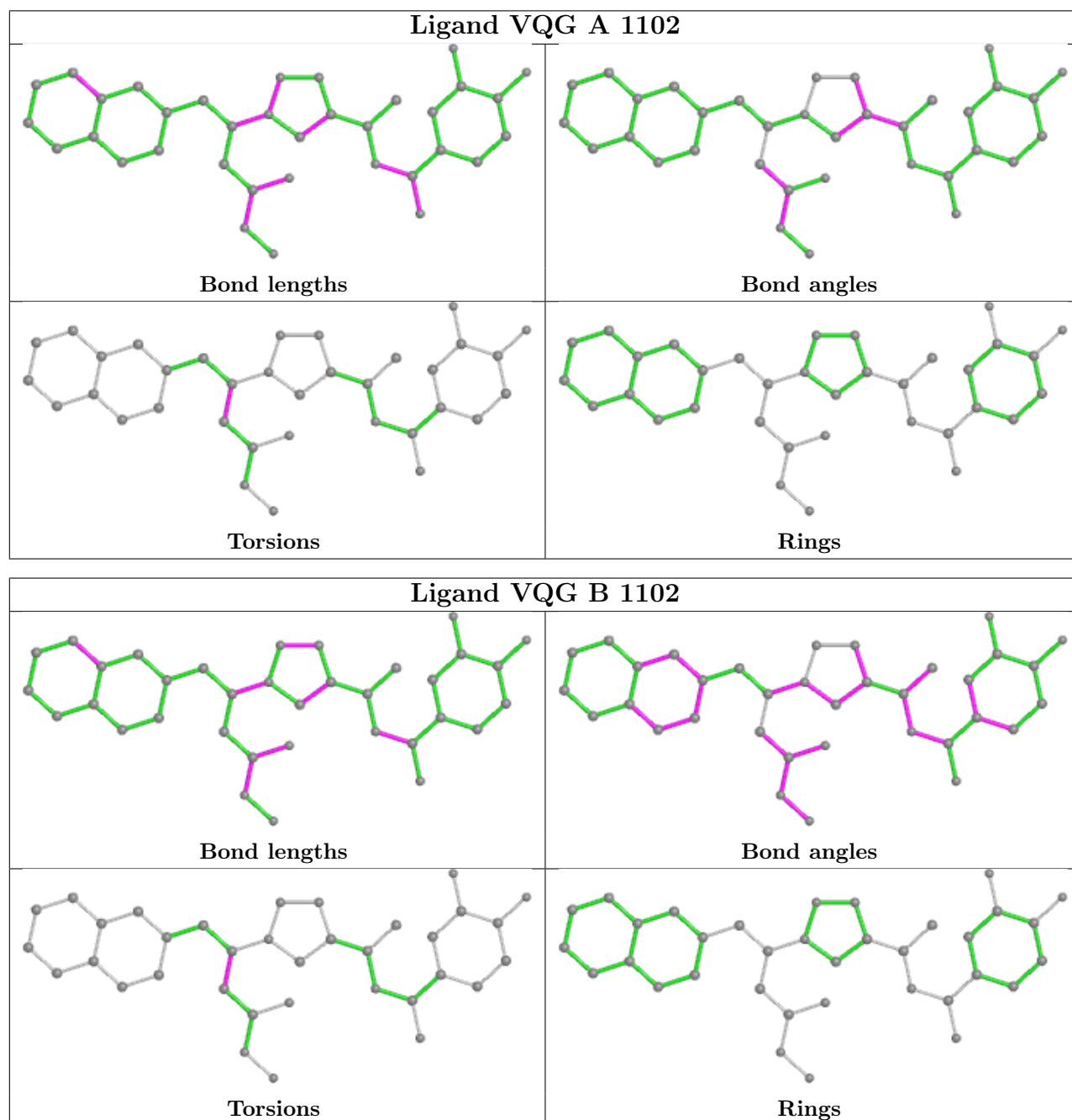
There are no ring outliers.

3 monomers are involved in 4 short contacts:

Mol	Chain	Res	Type	Clashes	Symm-Clashes
5	A	1106	EPE	1	0
4	A	1104	DIO	2	0
4	B	1104	DIO	1	0

The following is a two-dimensional graphical depiction of Mogul quality analysis of bond lengths, bond angles, torsion angles, and ring geometry for all instances of the Ligand of Interest. In addition, ligands with molecular weight > 250 and outliers as shown on the validation Tables will also be included. For torsion angles, if less than 5% of the Mogul distribution of torsion angles is within 10 degrees of the torsion angle in question, then that torsion angle is considered an outlier. Any bond that is central to one or more torsion angles identified as an outlier by Mogul will be highlighted in the graph. For rings, the root-mean-square deviation (RMSD) between the ring in question and similar rings identified by Mogul is calculated over all ring torsion angles. If the average RMSD is greater than 60 degrees and the minimal RMSD between the ring in question and any Mogul-identified rings is also greater than 60 degrees, then that ring is considered an outlier.

The outliers are highlighted in purple. The color gray indicates Mogul did not find sufficient equivalents in the CSD to analyse the geometry.



5.7 Other polymers [\(i\)](#)

There are no such residues in this entry.

5.8 Polymer linkage issues [\(i\)](#)

There are no chain breaks in this entry.

6 Fit of model and data [i](#)

6.1 Protein, DNA and RNA chains [i](#)

In the following table, the column labelled ‘#RSRZ> 2’ contains the number (and percentage) of RSRZ outliers, followed by percent RSRZ outliers for the chain as percentile scores relative to all X-ray entries and entries of similar resolution. The OWAB column contains the minimum, median, 95th percentile and maximum values of the occupancy-weighted average B-factor per residue. The column labelled ‘Q< 0.9’ lists the number of (and percentage) of residues with an average occupancy less than 0.9.

Mol	Chain	Analysed	<RSRZ>	#RSRZ>2	OWAB(Å ²)	Q<0.9
1	A	957/990 (96%)	-0.61	3 (0%) 94 93	27, 43, 65, 100	0
1	B	960/990 (96%)	-0.65	3 (0%) 94 93	20, 35, 60, 109	0
All	All	1917/1980 (96%)	-0.63	6 (0%) 94 93	20, 39, 63, 109	0

The worst 5 of 6 RSRZ outliers are listed below:

Mol	Chain	Res	Type	RSRZ
1	B	39	GLY	2.8
1	A	982	GLN	2.5
1	B	41	PRO	2.4
1	A	43	ASN	2.4
1	A	985	ALA	2.2

6.2 Non-standard residues in protein, DNA, RNA chains [i](#)

There are no non-standard protein/DNA/RNA residues in this entry.

6.3 Carbohydrates [i](#)

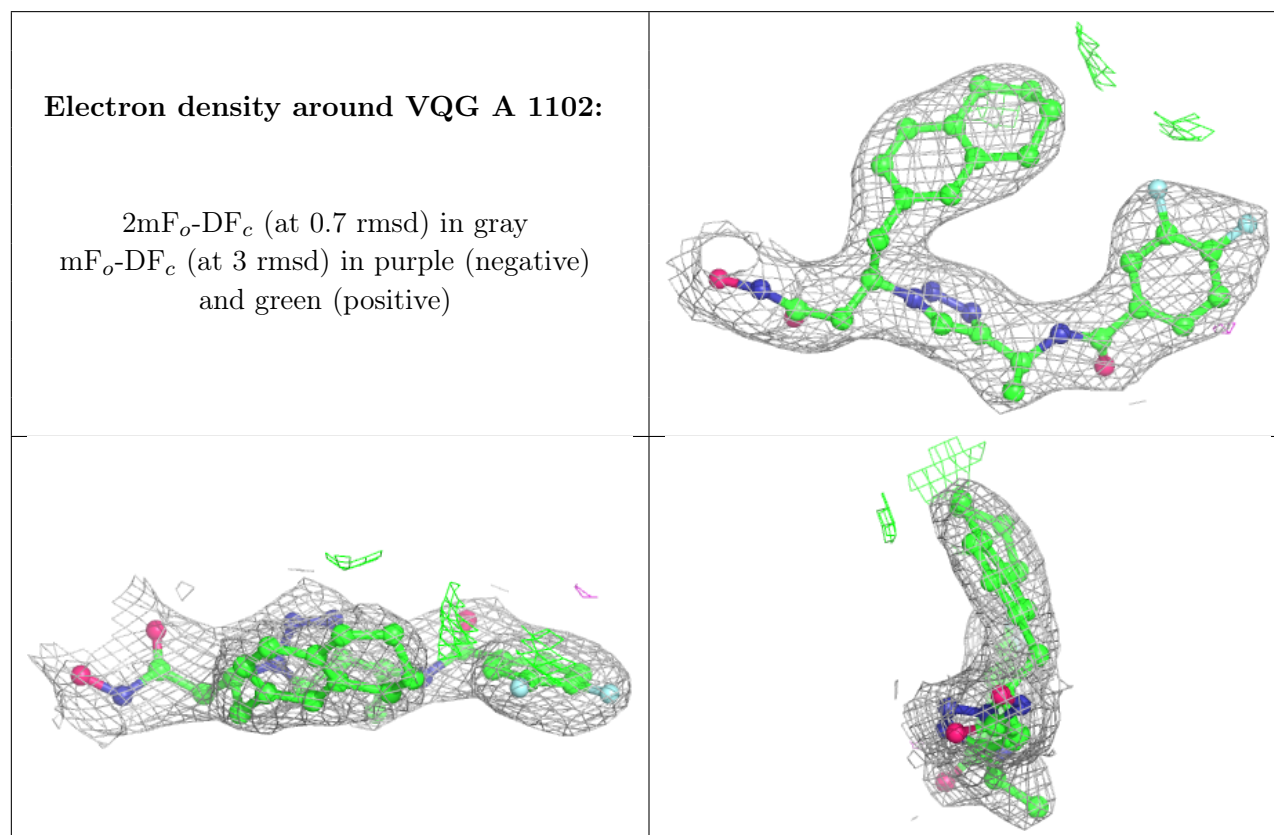
There are no monosaccharides in this entry.

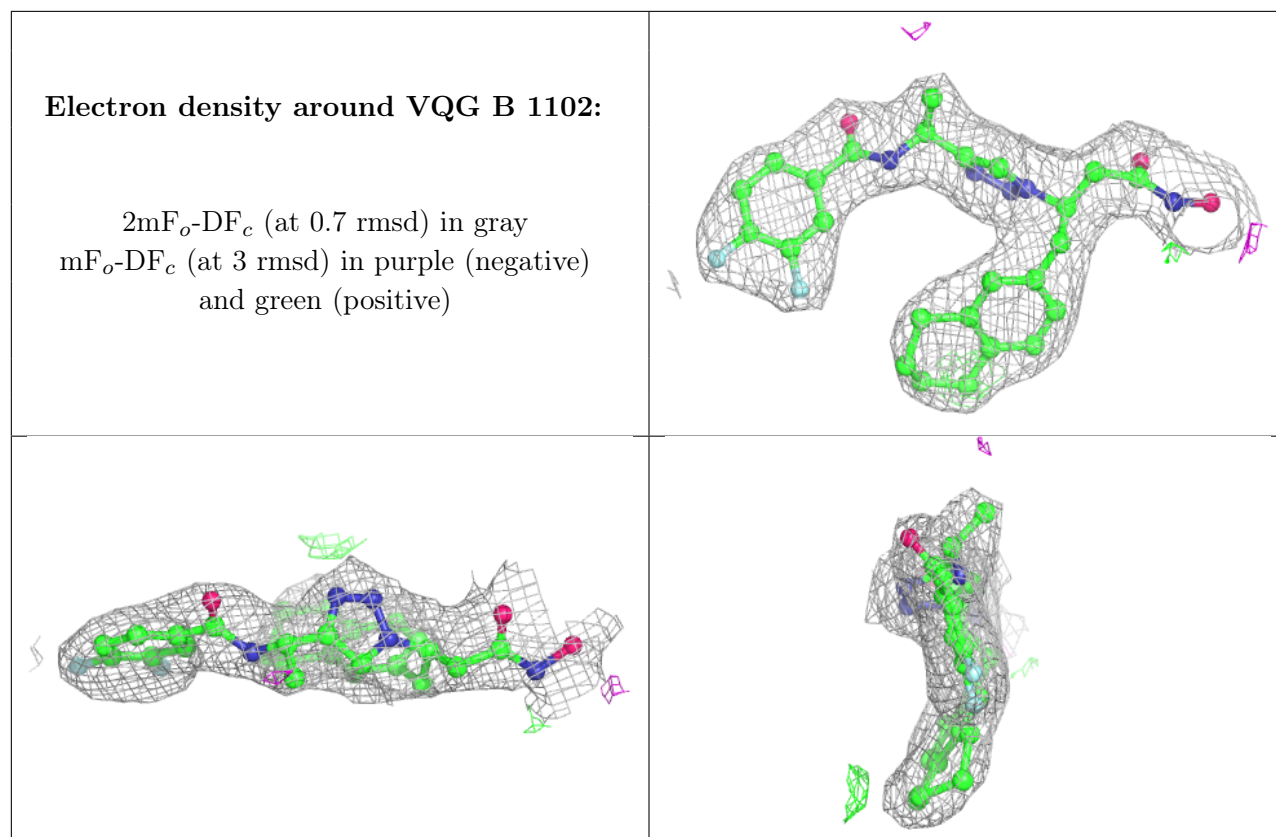
6.4 Ligands [i](#)

In the following table, the Atoms column lists the number of modelled atoms in the group and the number defined in the chemical component dictionary. The B-factors column lists the minimum, median, 95th percentile and maximum values of B factors of atoms in the group. The column labelled ‘Q< 0.9’ lists the number of atoms with occupancy less than 0.9.

Mol	Type	Chain	Res	Atoms	RSCC	RSR	B-factors(\AA^2)	Q<0.9
4	DIO	B	1104	6/6	0.86	0.25	41,82,123,123	0
5	EPE	B	1106	15/15	0.89	0.30	65,96,115,117	0
5	EPE	A	1106	15/15	0.93	0.20	67,108,126,129	0
4	DIO	B	1105	6/6	0.93	0.20	46,61,97,97	0
4	DIO	A	1104	6/6	0.94	0.17	61,87,121,121	0
4	DIO	A	1105	6/6	0.95	0.24	60,82,132,132	0
4	DIO	A	1103	6/6	0.96	0.18	55,72,100,100	0
3	VQG	A	1102	35/35	0.98	0.14	23,41,52,64	0
3	VQG	B	1102	35/35	0.99	0.14	19,35,51,69	0
4	DIO	B	1103	6/6	0.99	0.14	52,69,90,90	0
2	ZN	A	1101	1/1	1.00	0.13	42,42,42,42	0
2	ZN	B	1101	1/1	1.00	0.15	39,39,39,39	0

The following is a graphical depiction of the model fit to experimental electron density of all instances of the Ligand of Interest. In addition, ligands with molecular weight > 250 and outliers as shown on the geometry validation Tables will also be included. Each fit is shown from different orientation to approximate a three-dimensional view.





6.5 Other polymers [i](#)

There are no such residues in this entry.