



Full wwPDB X-ray Structure Validation Report ⓘ

May 26, 2020 – 04:52 am BST

PDB ID : 6K0T
Title : Crystal Structure of PPARgamma Ligand Binding Domain in complex with dibenzooxepine derivative compound-17
Authors : Suzuki, M.; Yamamoto, K.; Takahashi, Y.; Saito, J.
Deposited on : 2019-05-07
Resolution : 1.84 Å(reported)

This is a Full wwPDB X-ray Structure Validation Report for a publicly released PDB entry.

We welcome your comments at validation@mail.wwpdb.org

A user guide is available at

<https://www.wwpdb.org/validation/2017/XrayValidationReportHelp>

with specific help available everywhere you see the ⓘ symbol.

The following versions of software and data (see [references ⓘ](#)) were used in the production of this report:

MolProbity : 4.02b-467
Mogul : 1.8.5 (274361), CSD as541be (2020)
Xtriage (Phenix) : 1.13
EDS : 2.11
buster-report : 1.1.7 (2018)
Percentile statistics : 20191225.v01 (using entries in the PDB archive December 25th 2019)
Refmac : 5.8.0158
CCP4 : 7.0.044 (Gargrove)
Ideal geometry (proteins) : Engh & Huber (2001)
Ideal geometry (DNA, RNA) : Parkinson et al. (1996)
Validation Pipeline (wwPDB-VP) : 2.11

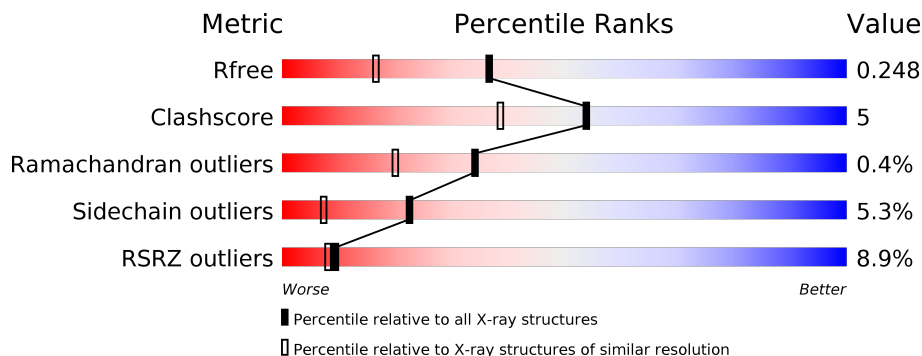
1 Overall quality at a glance

The following experimental techniques were used to determine the structure:

X-RAY DIFFRACTION

The reported resolution of this entry is 1.84 Å.

Percentile scores (ranging between 0-100) for global validation metrics of the entry are shown in the following graphic. The table shows the number of entries on which the scores are based.



Metric	Whole archive (#Entries)	Similar resolution (#Entries, resolution range(Å))
R_{free}	130704	4003 (1.86-1.82)
Clashscore	141614	4233 (1.86-1.82)
Ramachandran outliers	138981	4185 (1.86-1.82)
Sidechain outliers	138945	4186 (1.86-1.82)
RSRZ outliers	127900	3957 (1.86-1.82)

The table below summarises the geometric issues observed across the polymeric chains and their fit to the electron density. The red, orange, yellow and green segments on the lower bar indicate the fraction of residues that contain outliers for ≥ 3 , 2, 1 and 0 types of geometric quality criteria respectively. A grey segment represents the fraction of residues that are not modelled. The numeric value for each fraction is indicated below the corresponding segment, with a dot representing fractions $\leq 5\%$. The upper red bar (where present) indicates the fraction of residues that have poor fit to the electron density. The numeric value is given above the bar.

Mol	Chain	Length	Quality of chain
1	A	287	
1	C	287	
2	B	12	
2	D	12	

2 Entry composition i

There are 4 unique types of molecules in this entry. The entry contains 4999 atoms, of which 0 are hydrogens and 0 are deuteriums.

In the tables below, the ZeroOcc column contains the number of atoms modelled with zero occupancy, the AltConf column contains the number of residues with at least one atom in alternate conformation and the Trace column contains the number of residues modelled with at most 2 atoms.

- Molecule 1 is a protein called Peroxisome proliferator-activated receptor gamma.

Mol	Chain	Residues	Atoms					ZeroOcc	AltConf	Trace
			Total	C	N	O	S			
1	A	261	Total	C	N	O	S	0	5	0
			2115	1365	340	399	11			
1	C	268	Total	C	N	O	S	0	6	0
			2187	1414	356	406	11			

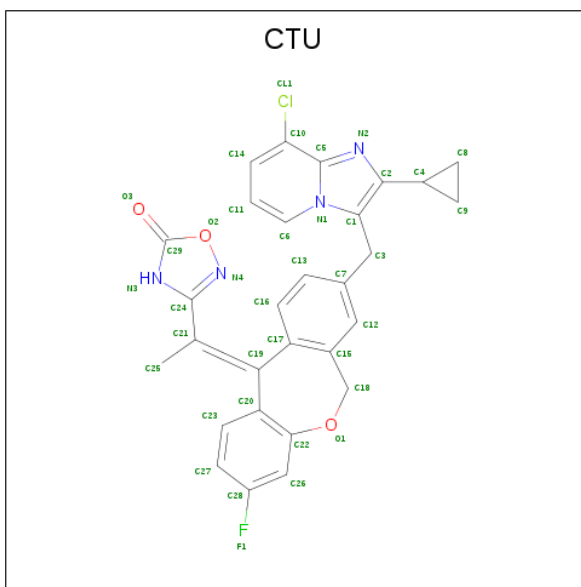
There are 8 discrepancies between the modelled and reference sequences:

Chain	Residue	Modelled	Actual	Comment	Reference
A	191	GLY	-	expression tag	UNP P37231
A	192	SER	-	expression tag	UNP P37231
A	193	HIS	-	expression tag	UNP P37231
A	194	MET	-	expression tag	UNP P37231
C	191	GLY	-	expression tag	UNP P37231
C	192	SER	-	expression tag	UNP P37231
C	193	HIS	-	expression tag	UNP P37231
C	194	MET	-	expression tag	UNP P37231

- Molecule 2 is a protein called Peroxisome proliferator-activated receptor gamma coactivator 1-alpha.

Mol	Chain	Residues	Atoms				ZeroOcc	AltConf	Trace
			Total	C	N	O			
2	B	10	Total	C	N	O	0	0	0
			77	53	12	12			
2	D	12	Total	C	N	O	0	0	0
			95	63	14	18			

- Molecule 3 is 3-[(1 {E})-1-[8-[(8-chloranyl-2-cyclopropyl-imidazo[1,2-a]pyridin-3-yl)methyl]-3-fluoranyl-6 {H}-benzo[c][1]benzoxepin-11-ylidene]ethyl]-4 {H}-1,2,4-oxadiazol-5-one (three-letter code: CTU) (formula: C₂₉H₂₂ClFN₄O₃) (labeled as "Ligand of Interest" by author).



Mol	Chain	Residues	Atoms					ZeroOcc	AltConf	
			Total	C	Cl	F	N			O
3	A	1	38	29	1	1	4	3	0	0
3	C	1	38	29	1	1	4	3	0	0

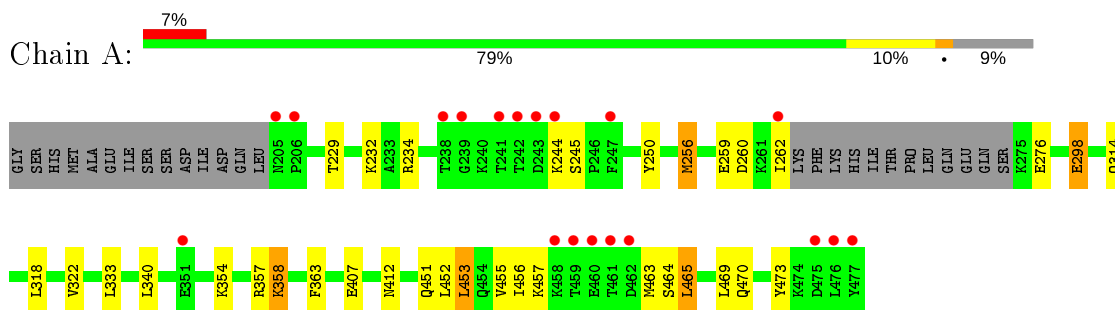
- Molecule 4 is water.

Mol	Chain	Residues	Atoms		ZeroOcc	AltConf
4	A	231	Total	O	0	0
			231	231		
4	B	3	Total	O	0	0
			3	3		
4	C	211	Total	O	0	0
			211	211		
4	D	4	Total	O	0	0
			4	4		

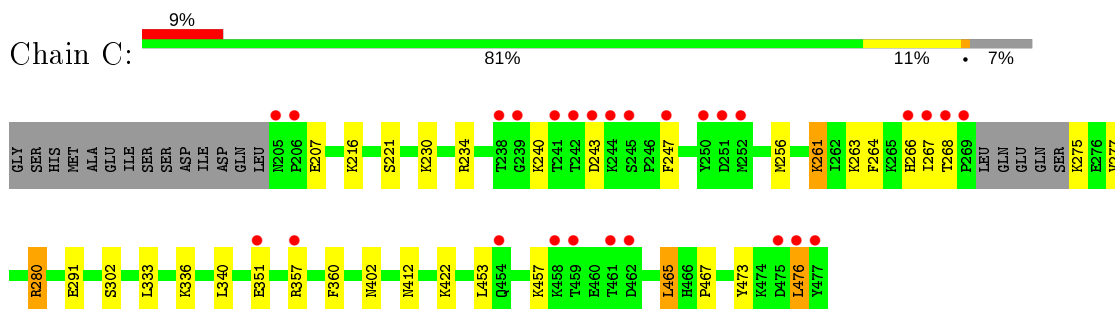
3 Residue-property plots [i](#)

These plots are drawn for all protein, RNA and DNA chains in the entry. The first graphic for a chain summarises the proportions of the various outlier classes displayed in the second graphic. The second graphic shows the sequence view annotated by issues in geometry and electron density. Residues are color-coded according to the number of geometric quality criteria for which they contain at least one outlier: green = 0, yellow = 1, orange = 2 and red = 3 or more. A red dot above a residue indicates a poor fit to the electron density ($RSRZ > 2$). Stretches of 2 or more consecutive residues without any outlier are shown as a green connector. Residues present in the sample, but not in the model, are shown in grey.

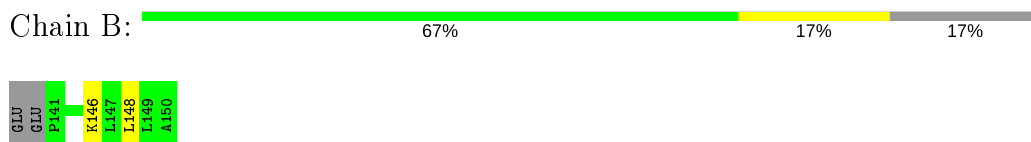
- Molecule 1: Peroxisome proliferator-activated receptor gamma



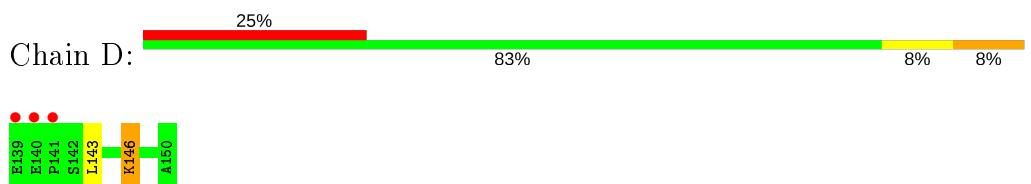
- Molecule 1: Peroxisome proliferator-activated receptor gamma



- Molecule 2: Peroxisome proliferator-activated receptor gamma coactivator 1-alpha



- Molecule 2: Peroxisome proliferator-activated receptor gamma coactivator 1-alpha



4 Data and refinement statistics

Property	Value	Source
Space group	P 1	Depositor
Cell constants a, b, c, α , β , γ	44.34Å 54.06Å 70.49Å 94.26° 103.94° 89.95°	Depositor
Resolution (Å)	40.00 – 1.84 34.11 – 1.84	Depositor EDS
% Data completeness (in resolution range)	95.8 (40.00-1.84) 95.8 (34.11-1.84)	Depositor EDS
R_{merge}	0.10	Depositor
R_{sym}	(Not available)	Depositor
$\langle I/\sigma(I) \rangle$ ¹	1.48 (at 1.84Å)	Xtrriage
Refinement program	REFMAC 5.8.0232	Depositor
R, R_{free}	0.192 , 0.244 0.199 , 0.248	Depositor DCC
R_{free} test set	2650 reflections (5.02%)	wwPDB-VP
Wilson B-factor (Å ²)	24.6	Xtrriage
Anisotropy	0.116	Xtrriage
Bulk solvent k_{sol} (e/Å ³), B_{sol} (Å ²)	0.35 , 46.5	EDS
L-test for twinning ²	$\langle L \rangle = 0.50$, $\langle L^2 \rangle = 0.33$	Xtrriage
Estimated twinning fraction	No twinning to report.	Xtrriage
F_o, F_c correlation	0.95	EDS
Total number of atoms	4999	wwPDB-VP
Average B, all atoms (Å ²)	39.0	wwPDB-VP

Xtrriage's analysis on translational NCS is as follows: *The largest off-origin peak in the Patterson function is 8.15% of the height of the origin peak. No significant pseudotranslation is detected.*

¹Intensities estimated from amplitudes.

²Theoretical values of $\langle |L| \rangle$, $\langle L^2 \rangle$ for acentric reflections are 0.5, 0.333 respectively for untwinned datasets, and 0.375, 0.2 for perfectly twinned datasets.

5 Model quality [i](#)

5.1 Standard geometry [i](#)

Bond lengths and bond angles in the following residue types are not validated in this section: CTU, CME

The Z score for a bond length (or angle) is the number of standard deviations the observed value is removed from the expected value. A bond length (or angle) with $|Z| > 5$ is considered an outlier worth inspection. RMSZ is the root-mean-square of all Z scores of the bond lengths (or angles).

Mol	Chain	Bond lengths		Bond angles	
		RMSZ	# Z >5	RMSZ	# Z >5
1	A	0.77	0/2154	0.82	0/2900
1	C	0.77	0/2232	0.82	0/3003
2	B	0.63	0/77	0.91	0/100
2	D	0.64	0/95	0.86	0/125
All	All	0.76	0/4558	0.82	0/6128

There are no bond length outliers.

There are no bond angle outliers.

There are no chirality outliers.

There are no planarity outliers.

5.2 Too-close contacts [i](#)

In the following table, the Non-H and H(model) columns list the number of non-hydrogen atoms and hydrogen atoms in the chain respectively. The H(added) column lists the number of hydrogen atoms added and optimized by MolProbity. The Clashes column lists the number of clashes within the asymmetric unit, whereas Symm-Clashes lists symmetry related clashes.

Mol	Chain	Non-H	H(model)	H(added)	Clashes	Symm-Clashes
1	A	2115	0	2176	21	1
1	C	2187	0	2267	27	1
2	B	77	0	98	1	0
2	D	95	0	109	2	0
3	A	38	0	0	1	0
3	C	38	0	0	1	0
4	A	231	0	0	4	0
4	B	3	0	0	0	0
4	C	211	0	0	7	0

Continued on next page...

Continued from previous page...

Mol	Chain	Non-H	H(model)	H(added)	Clashes	Symm-Clashes
4	D	4	0	0	0	0
All	All	4999	0	4650	49	1

The all-atom clashscore is defined as the number of clashes found per 1000 atoms (including hydrogen atoms). The all-atom clashscore for this structure is 5.

All (49) close contacts within the same asymmetric unit are listed below, sorted by their clash magnitude.

Atom-1	Atom-2	Interatomic distance (Å)	Clash overlap (Å)
1:C:234[B]:ARG:HG3	1:C:234[B]:ARG:HH11	1.23	0.99
1:C:234[B]:ARG:CG	1:C:234[B]:ARG:HH11	1.95	0.70
1:A:407:GLU:OE2	4:A:601:HOH:O	2.11	0.67
1:A:298[B]:GLU:OE1	4:A:602:HOH:O	2.13	0.67
1:C:234[B]:ARG:NH1	1:C:234[B]:ARG:CG	2.58	0.64
1:C:247:PHE:HB3	1:C:261:LYS:HE3	1.80	0.64
1:C:476:LEU:HD21	4:C:640:HOH:O	1.97	0.63
1:C:234[B]:ARG:NH1	1:C:234[B]:ARG:HG3	2.03	0.61
1:C:453:LEU:O	1:C:457:LYS:HG2	2.04	0.56
1:A:473:TYR:OH	3:A:501:CTU:N3	2.40	0.54
1:C:264:PHE:O	1:C:280:ARG:NH1	2.42	0.53
1:C:275:LYS:HA	1:C:357:ARG:HD3	1.90	0.53
1:A:412:ASN:HB3	4:A:693:HOH:O	2.09	0.53
1:A:456:ILE:HG21	1:A:463:MET:HE3	1.92	0.52
1:C:234[A]:ARG:NH2	4:C:605:HOH:O	2.42	0.52
1:C:473:TYR:OH	3:C:501:CTU:N3	2.43	0.51
1:C:267:ILE:HG12	4:C:613:HOH:O	2.11	0.50
1:A:456:ILE:CG2	1:A:463:MET:HE3	2.42	0.50
1:C:216[A]:LYS:HE3	4:C:683:HOH:O	2.11	0.50
1:C:333:LEU:HB3	1:C:340:LEU:HB2	1.94	0.49
1:A:298[A]:GLU:OE2	1:A:298[A]:GLU:CA	2.60	0.49
1:A:318:LEU:O	1:A:322:VAL:HG13	2.14	0.48
1:C:230:LYS:O	1:C:234[A]:ARG:HG2	2.14	0.47
1:C:216[B]:LYS:HA	1:C:216[B]:LYS:HD3	1.84	0.46
1:C:247:PHE:HB3	1:C:261:LYS:CE	2.43	0.46
1:A:333:LEU:HB3	1:A:340:LEU:HB2	1.98	0.45
1:C:247:PHE:CB	1:C:261:LYS:HE3	2.46	0.45
1:A:314:GLN:HE21	2:B:148:LEU:HD22	1.82	0.44
1:C:402[B]:ASN:HB2	4:C:638:HOH:O	2.16	0.44
2:D:146:LYS:HB2	2:D:146:LYS:NZ	2.33	0.44
1:A:363:PHE:CD1	1:A:452:LEU:HD22	2.52	0.44
1:A:358:LYS:HD2	1:A:358:LYS:N	2.33	0.43

Continued on next page...

Continued from previous page...

Atom-1	Atom-2	Interatomic distance (Å)	Clash overlap (Å)
1:C:221[A]:SER:HG	1:C:302:SER:CB	2.30	0.43
1:A:234:ARG:HD3	4:A:644:HOH:O	2.18	0.43
1:C:240:LYS:HE2	4:C:659:HOH:O	2.18	0.43
1:C:357:ARG:O	1:C:360:PHE:HB2	2.20	0.42
1:A:256:MET:O	1:A:259:GLU:HB2	2.19	0.42
1:C:467:PRO:HB2	2:D:143:LEU:HD11	2.01	0.42
1:A:229:THR:OG1	1:A:232:LYS:HG2	2.19	0.42
1:C:412:ASN:HB3	4:C:699:HOH:O	2.19	0.41
1:A:451:GLN:O	1:A:455:VAL:HG23	2.19	0.41
1:C:275:LYS:HG3	1:C:277:VAL:H	1.85	0.41
1:A:453:LEU:HD23	1:A:453:LEU:HA	1.89	0.41
1:C:465:LEU:HD23	1:C:465:LEU:HA	1.96	0.41
1:A:357:ARG:HD2	1:A:358:LYS:O	2.21	0.41
1:A:453:LEU:HD22	1:A:457:LYS:HG3	2.03	0.41
1:A:465:LEU:O	1:A:470:GLN:NE2	2.54	0.41
1:C:234[B]:ARG:NE	1:C:234[B]:ARG:HA	2.36	0.40

All (1) symmetry-related close contacts are listed below. The label for Atom-2 includes the symmetry operator and encoded unit-cell translations to be applied.

Atom-1	Atom-2	Interatomic distance (Å)	Clash overlap (Å)
1:A:250:TYR:OH	1:C:263:LYS:O[1_556]	2.17	0.03

5.3 Torsion angles [i](#)

5.3.1 Protein backbone [i](#)

In the following table, the Percentiles column shows the percent Ramachandran outliers of the chain as a percentile score with respect to all X-ray entries followed by that with respect to entries of similar resolution.

The Analysed column shows the number of residues for which the backbone conformation was analysed, and the total number of residues.

Mol	Chain	Analysed	Favoured	Allowed	Outliers	Percentiles	
1	A	261/287 (91%)	252 (97%)	8 (3%)	1 (0%)	34	20
1	C	269/287 (94%)	263 (98%)	5 (2%)	1 (0%)	34	20
2	B	8/12 (67%)	8 (100%)	0	0	100	100
2	D	10/12 (83%)	9 (90%)	1 (10%)	0	100	100

Continued on next page...

Continued from previous page...

Mol	Chain	Analysed	Favoured	Allowed	Outliers	Percentiles
All	All	548/598 (92%)	532 (97%)	14 (3%)	2 (0%)	34 20

All (2) Ramachandran outliers are listed below:

Mol	Chain	Res	Type
1	C	243	ASP
1	A	276	GLU

5.3.2 Protein sidechains [i](#)

In the following table, the Percentiles column shows the percent sidechain outliers of the chain as a percentile score with respect to all X-ray entries followed by that with respect to entries of similar resolution.

The Analysed column shows the number of residues for which the sidechain conformation was analysed, and the total number of residues.

Mol	Chain	Analysed	Rotameric	Outliers	Percentiles
1	A	237/257 (92%)	224 (94%)	13 (6%)	21 7
1	C	246/257 (96%)	234 (95%)	12 (5%)	25 9
2	B	9/11 (82%)	8 (89%)	1 (11%)	6 1
2	D	11/11 (100%)	10 (91%)	1 (9%)	9 1
All	All	503/536 (94%)	476 (95%)	27 (5%)	22 7

All (27) residues with a non-rotameric sidechain are listed below:

Mol	Chain	Res	Type
1	A	244	LYS
1	A	245	SER
1	A	256	MET
1	A	260	ASP
1	A	262	ILE
1	A	298[A]	GLU
1	A	298[B]	GLU
1	A	354	LYS
1	A	358	LYS
1	A	453	LEU
1	A	464	SER
1	A	465	LEU
1	A	469	LEU

Continued on next page...

Continued from previous page...

Mol	Chain	Res	Type
2	B	146	LYS
1	C	207	GLU
1	C	256	MET
1	C	261	LYS
1	C	266	HIS
1	C	268	THR
1	C	280	ARG
1	C	291	GLU
1	C	336	LYS
1	C	351	GLU
1	C	422	LYS
1	C	465	LEU
1	C	476	LEU
2	D	146	LYS

Some sidechains can be flipped to improve hydrogen bonding and reduce clashes. All (6) such sidechains are listed below:

Mol	Chain	Res	Type
1	A	314	GLN
1	A	410	GLN
1	A	470	GLN
1	C	314	GLN
1	C	410	GLN
1	C	470	GLN

5.3.3 RNA [i](#)

There are no RNA molecules in this entry.

5.4 Non-standard residues in protein, DNA, RNA chains [i](#)

2 non-standard protein/DNA/RNA residues are modelled in this entry.

In the following table, the Counts columns list the number of bonds (or angles) for which Mogul statistics could be retrieved, the number of bonds (or angles) that are observed in the model and the number of bonds (or angles) that are defined in the Chemical Component Dictionary. The Link column lists molecule types, if any, to which the group is linked. The Z score for a bond length (or angle) is the number of standard deviations the observed value is removed from the expected value. A bond length (or angle) with $|Z| > 2$ is considered an outlier worth inspection. RMSZ is the root-mean-square of all Z scores of the bond lengths (or angles).

Mol	Type	Chain	Res	Link	Bond lengths			Bond angles		
					Counts	RMSZ	# Z > 2	Counts	RMSZ	# Z > 2
1	CME	A	285	1	8,9,10	0.48	0	5,9,11	0.51	0
1	CME	C	285	1	8,9,10	0.45	0	5,9,11	0.43	0

In the following table, the Chirals column lists the number of chiral outliers, the number of chiral centers analysed, the number of these observed in the model and the number defined in the Chemical Component Dictionary. Similar counts are reported in the Torsion and Rings columns. '-' means no outliers of that kind were identified.

Mol	Type	Chain	Res	Link	Chirals	Torsions	Rings
1	CME	A	285	1	-	0/5/8/10	-
1	CME	C	285	1	-	1/5/8/10	-

There are no bond length outliers.

There are no bond angle outliers.

There are no chirality outliers.

All (1) torsion outliers are listed below:

Mol	Chain	Res	Type	Atoms
1	C	285	CME	CZ-CE-SD-SG

There are no ring outliers.

No monomer is involved in short contacts.

5.5 Carbohydrates [i](#)

There are no carbohydrates in this entry.

5.6 Ligand geometry [i](#)

2 ligands are modelled in this entry.

In the following table, the Counts columns list the number of bonds (or angles) for which Mogul statistics could be retrieved, the number of bonds (or angles) that are observed in the model and the number of bonds (or angles) that are defined in the Chemical Component Dictionary. The Link column lists molecule types, if any, to which the group is linked. The Z score for a bond length (or angle) is the number of standard deviations the observed value is removed from the expected value. A bond length (or angle) with $|Z| > 2$ is considered an outlier worth inspection. RMSZ is the root-mean-square of all Z scores of the bond lengths (or angles).

Mol	Type	Chain	Res	Link	Bond lengths			Bond angles		
					Counts	RMSZ	# Z > 2	Counts	RMSZ	# Z > 2
3	CTU	C	501	-	35,44,44	1.58	5 (14%)	42,66,66	1.78	6 (14%)
3	CTU	A	501	-	35,44,44	1.24	5 (14%)	42,66,66	1.85	10 (23%)

In the following table, the Chirals column lists the number of chiral outliers, the number of chiral centers analysed, the number of these observed in the model and the number defined in the Chemical Component Dictionary. Similar counts are reported in the Torsion and Rings columns. '-' means no outliers of that kind were identified.

Mol	Type	Chain	Res	Link	Chirals	Torsions	Rings
3	CTU	C	501	-	-	2/6/31/31	0/7/7/7
3	CTU	A	501	-	-	2/6/31/31	0/7/7/7

All (10) bond length outliers are listed below:

Mol	Chain	Res	Type	Atoms	Z	Observed(Å)	Ideal(Å)
3	C	501	CTU	O1-C18	-4.08	1.41	1.44
3	C	501	CTU	O3-C29	3.67	1.23	1.19
3	C	501	CTU	C5-N2	-3.23	1.30	1.33
3	C	501	CTU	C6-N1	-2.77	1.35	1.38
3	C	501	CTU	C24-C21	-2.63	1.40	1.48
3	A	501	CTU	O3-C29	2.58	1.22	1.19
3	A	501	CTU	C20-C19	-2.22	1.46	1.49
3	A	501	CTU	C19-C21	2.21	1.37	1.35
3	A	501	CTU	C3-C1	-2.14	1.48	1.50
3	A	501	CTU	O1-C18	-2.14	1.42	1.44

All (16) bond angle outliers are listed below:

Mol	Chain	Res	Type	Atoms	Z	Observed(°)	Ideal(°)
3	C	501	CTU	C1-C2-C4	-5.61	119.10	129.63
3	A	501	CTU	C25-C21-C19	5.53	130.00	123.34
3	C	501	CTU	C25-C21-C19	5.00	129.37	123.34
3	A	501	CTU	C1-C2-C4	-4.55	121.09	129.63
3	C	501	CTU	O1-C22-C26	-4.35	110.65	116.95
3	A	501	CTU	O1-C22-C26	-4.11	110.99	116.95
3	A	501	CTU	C5-C10-CL1	-3.72	115.56	118.97
3	A	501	CTU	C20-C19-C21	3.36	127.50	123.84
3	C	501	CTU	C5-C10-CL1	-2.87	116.34	118.97
3	C	501	CTU	C1-C3-C7	2.67	118.40	114.55
3	C	501	CTU	C23-C20-C19	-2.17	115.10	119.93
3	A	501	CTU	C1-C3-C7	2.12	117.62	114.55

Continued on next page...

Continued from previous page...

Mol	Chain	Res	Type	Atoms	Z	Observed(°)	Ideal(°)
3	A	501	CTU	C8-C4-C2	2.11	122.00	119.37
3	A	501	CTU	C14-C10-CL1	2.07	123.63	118.57
3	A	501	CTU	O1-C22-C20	2.06	128.81	122.54
3	A	501	CTU	C9-C8-C4	-2.05	58.86	60.56

There are no chirality outliers.

All (4) torsion outliers are listed below:

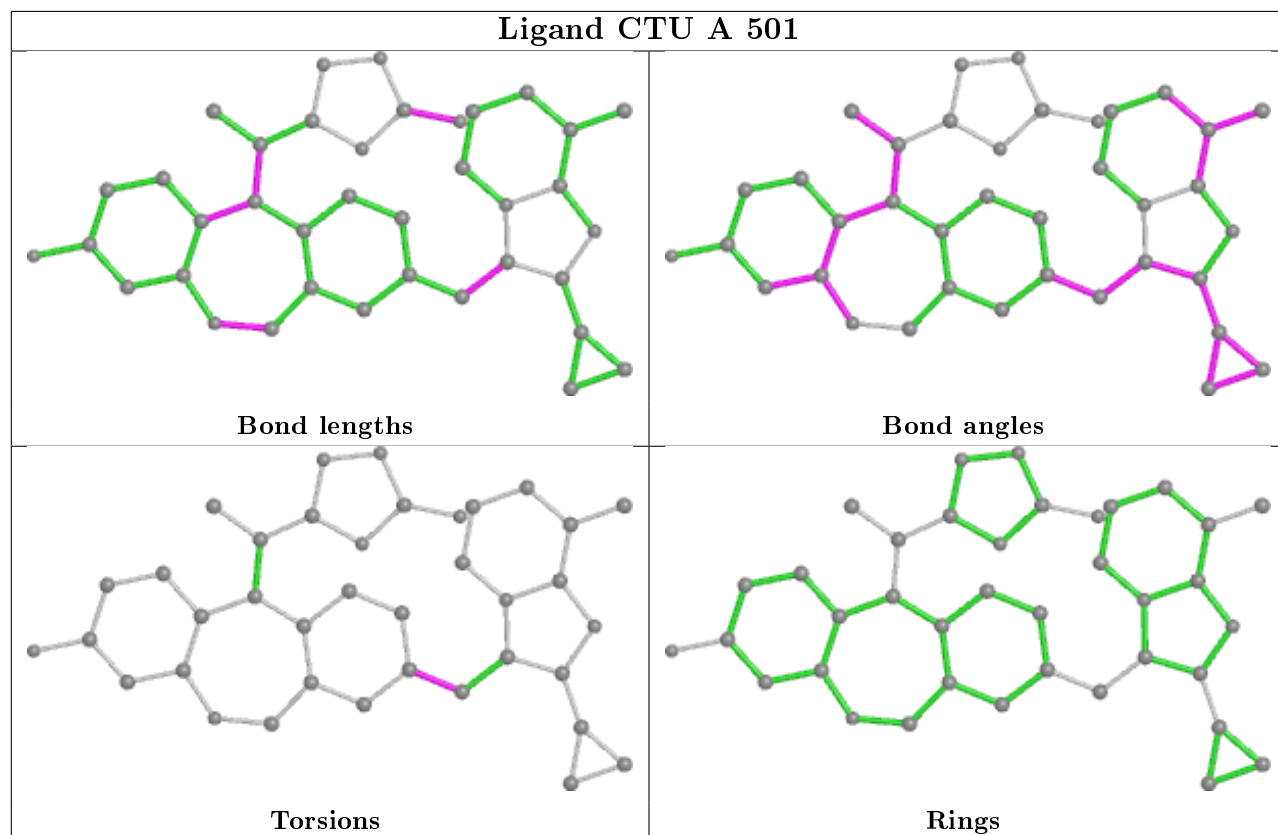
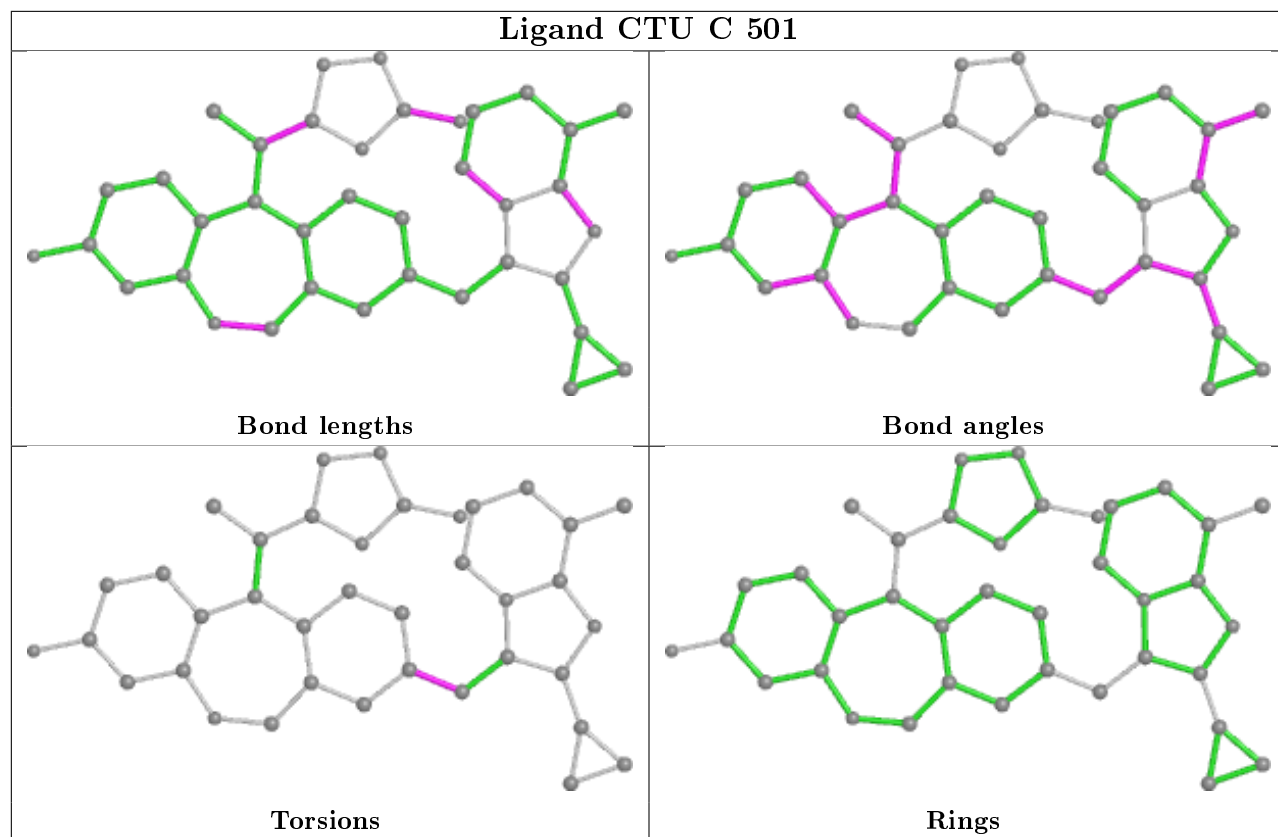
Mol	Chain	Res	Type	Atoms
3	C	501	CTU	C1-C3-C7-C13
3	A	501	CTU	C1-C3-C7-C13
3	C	501	CTU	C1-C3-C7-C12
3	A	501	CTU	C1-C3-C7-C12

There are no ring outliers.

2 monomers are involved in 2 short contacts:

Mol	Chain	Res	Type	Clashes	Symm-Clashes
3	C	501	CTU	1	0
3	A	501	CTU	1	0

The following is a two-dimensional graphical depiction of Mogul quality analysis of bond lengths, bond angles, torsion angles, and ring geometry for all instances of the Ligand of Interest. In addition, ligands with molecular weight > 250 and outliers as shown on the validation Tables will also be included. For torsion angles, if less than 5% of the Mogul distribution of torsion angles is within 10 degrees of the torsion angle in question, then that torsion angle is considered an outlier. Any bond that is central to one or more torsion angles identified as an outlier by Mogul will be highlighted in the graph. For rings, the root-mean-square deviation (RMSD) between the ring in question and similar rings identified by Mogul is calculated over all ring torsion angles. If the average RMSD is greater than 60 degrees and the minimal RMSD between the ring in question and any Mogul-identified rings is also greater than 60 degrees, then that ring is considered an outlier. The outliers are highlighted in purple. The color gray indicates Mogul did not find sufficient equivalents in the CSD to analyse the geometry.



5.7 Other polymers [i](#)

There are no such residues in this entry.

5.8 Polymer linkage issues [i](#)

There are no chain breaks in this entry.

6 Fit of model and data [i](#)

6.1 Protein, DNA and RNA chains [i](#)

In the following table, the column labelled '#RSRZ> 2' contains the number (and percentage) of RSRZ outliers, followed by percent RSRZ outliers for the chain as percentile scores relative to all X-ray entries and entries of similar resolution. The OWAB column contains the minimum, median, 95th percentile and maximum values of the occupancy-weighted average B-factor per residue. The column labelled 'Q< 0.9' lists the number of (and percentage) of residues with an average occupancy less than 0.9.

Mol	Chain	Analysed	<RSRZ>	#RSRZ>2	OWAB(Å ²)	Q<0.9
1	A	260/287 (90%)	0.18	19 (7%) 15 13	15, 29, 81, 93	0
1	C	267/287 (93%)	0.21	27 (10%) 7 6	15, 31, 86, 105	0
2	B	10/12 (83%)	-0.26	0 100 100	23, 32, 40, 54	0
2	D	12/12 (100%)	0.66	3 (25%) 0 0	21, 34, 84, 85	0
All	All	549/598 (91%)	0.20	49 (8%) 9 8	15, 31, 84, 105	0

All (49) RSRZ outliers are listed below:

Mol	Chain	Res	Type	RSRZ
1	A	242	THR	7.4
1	A	477	TYR	5.5
1	A	205	ASN	5.2
1	A	461	THR	5.1
1	A	243	ASP	5.1
1	C	242	THR	5.1
1	C	269	PRO	5.0
1	C	461	THR	4.9
1	A	462	ASP	4.9
1	C	243	ASP	4.9
2	D	140	GLU	4.6
1	A	206	PRO	4.3
1	A	459	THR	4.0
1	C	247	PHE	3.8
1	C	206	PRO	3.8
1	C	458	LYS	3.7
1	A	476	LEU	3.7
1	C	477	TYR	3.7
1	C	459	THR	3.7
1	C	244	LYS	3.7
2	D	141	PRO	3.5

Continued on next page...

Continued from previous page...

Mol	Chain	Res	Type	RSRZ
1	C	251	ASP	3.4
1	A	475	ASP	3.3
1	A	351	GLU	3.3
1	C	462	ASP	3.2
1	C	205	ASN	3.2
1	C	266	HIS	3.0
1	C	250	TYR	3.0
1	A	241	THR	3.0
2	D	139	GLU	3.0
1	A	458	LYS	2.9
1	A	244	LYS	2.8
1	A	247	PHE	2.8
1	C	239	GLY	2.8
1	A	239	GLY	2.7
1	C	252	MET	2.6
1	C	267	ILE	2.5
1	A	238	THR	2.5
1	C	357	ARG	2.4
1	C	245	SER	2.4
1	C	238	THR	2.4
1	A	460	GLU	2.3
1	A	262	ILE	2.3
1	C	268	THR	2.3
1	C	351	GLU	2.3
1	C	241	THR	2.1
1	C	475	ASP	2.1
1	C	454	GLN	2.0
1	C	476	LEU	2.0

6.2 Non-standard residues in protein, DNA, RNA chains [i](#)

In the following table, the Atoms column lists the number of modelled atoms in the group and the number defined in the chemical component dictionary. The B-factors column lists the minimum, median, 95th percentile and maximum values of B factors of atoms in the group. The column labelled 'Q< 0.9' lists the number of atoms with occupancy less than 0.9.

Mol	Type	Chain	Res	Atoms	RSCC	RSR	B-factors(Å ²)	Q<0.9
1	CME	A	285	10/11	0.94	0.10	34,40,44,47	0
1	CME	C	285	10/11	0.96	0.11	31,39,48,51	0

6.3 Carbohydrates [i](#)

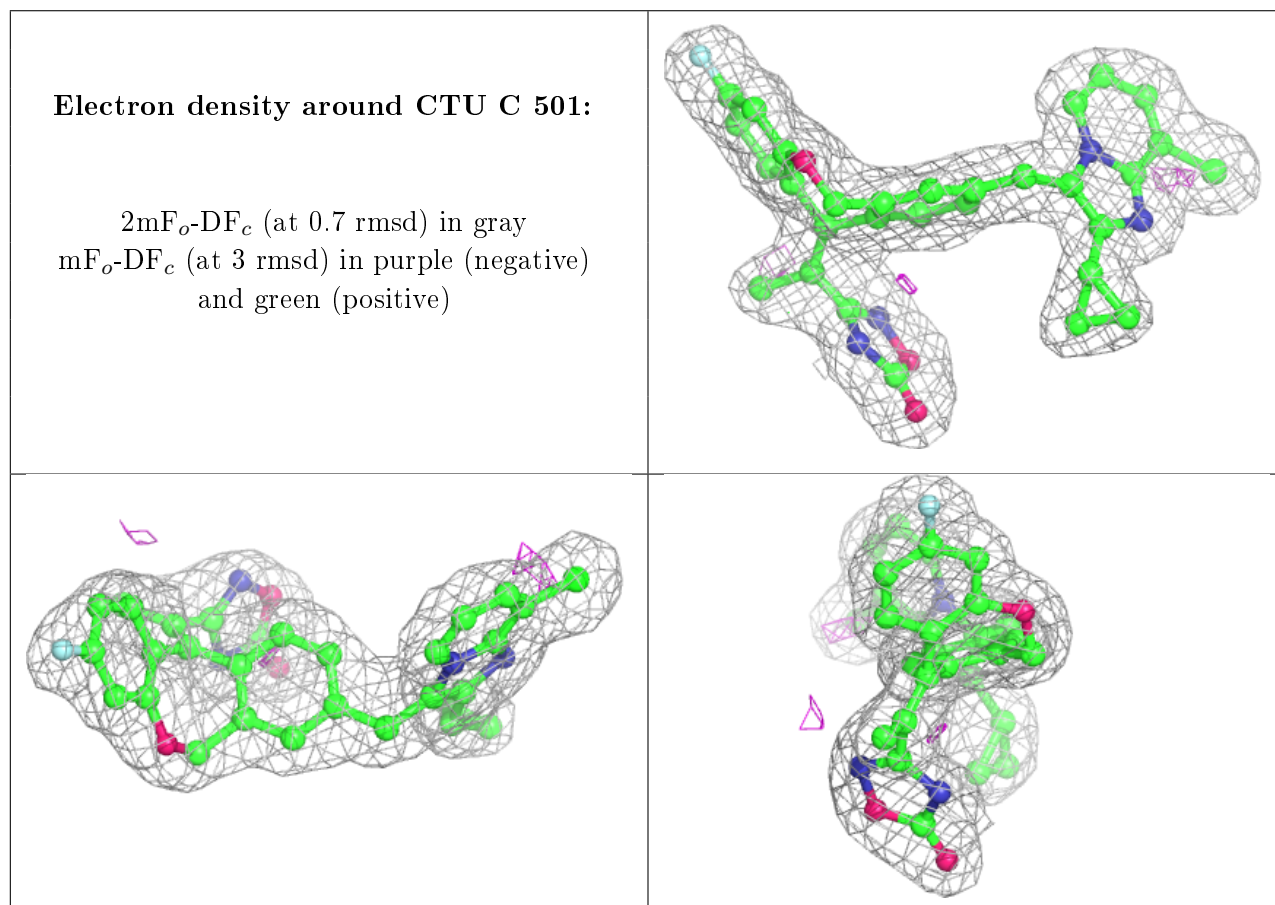
There are no carbohydrates in this entry.

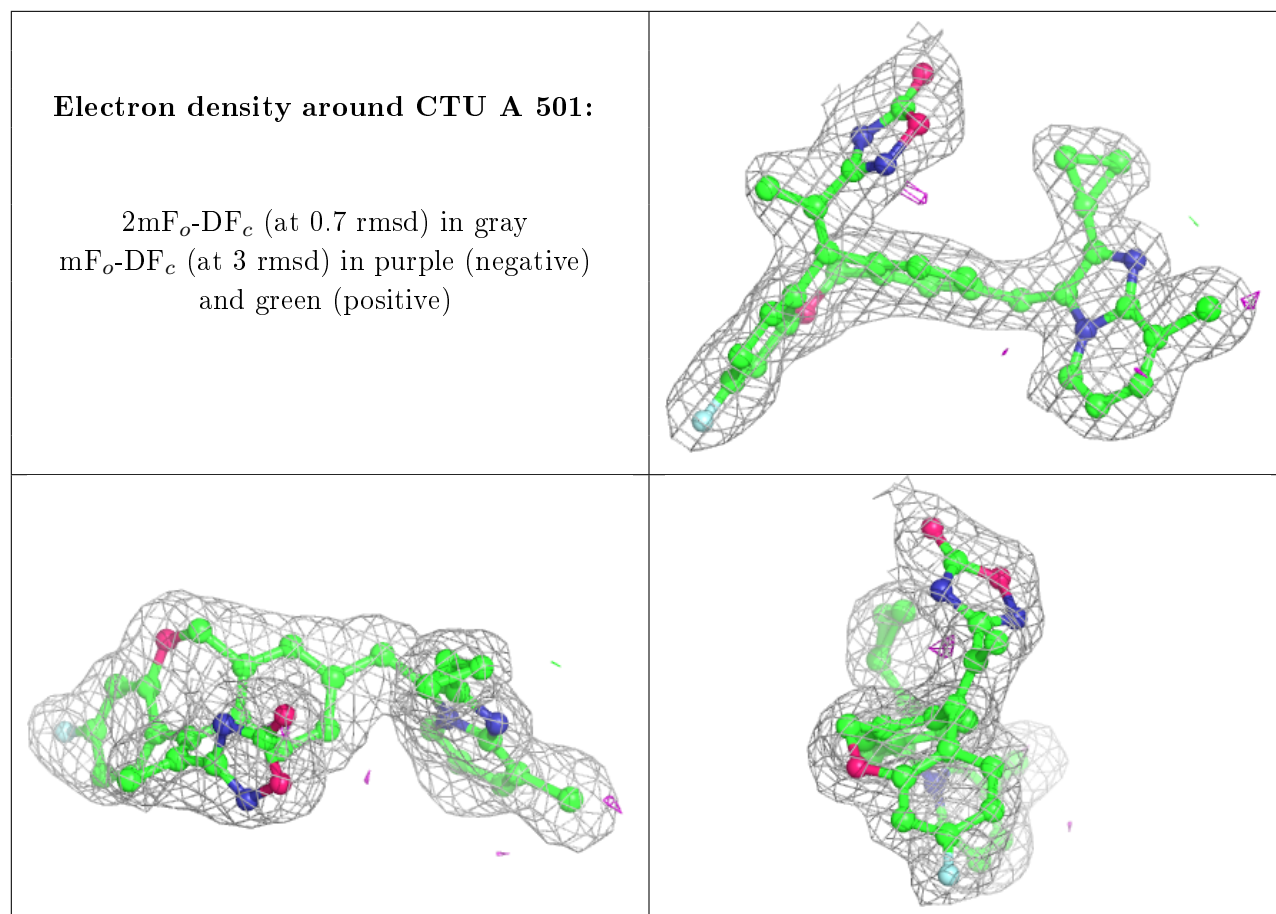
6.4 Ligands [i](#)

In the following table, the Atoms column lists the number of modelled atoms in the group and the number defined in the chemical component dictionary. The B-factors column lists the minimum, median, 95th percentile and maximum values of B factors of atoms in the group. The column labelled 'Q< 0.9' lists the number of atoms with occupancy less than 0.9.

Mol	Type	Chain	Res	Atoms	RSCC	RSR	B-factors(Å ²)	Q<0.9
3	CTU	C	501	38/38	0.91	0.10	32,39,46,48	0
3	CTU	A	501	38/38	0.92	0.09	28,39,46,50	0

The following is a graphical depiction of the model fit to experimental electron density of all instances of the Ligand of Interest. In addition, ligands with molecular weight > 250 and outliers as shown on the geometry validation Tables will also be included. Each fit is shown from different orientation to approximate a three-dimensional view.





6.5 Other polymers [i](#)

There are no such residues in this entry.