



# Full wwPDB X-ray Structure Validation Report ⓘ

Feb 19, 2024 – 08:05 AM EST

PDB ID : 4JZY  
Title : Crystal structures of Drosophila Cryptochrome  
Authors : Czarna, A.; Wolf, E.  
Deposited on : 2013-04-03  
Resolution : 2.34 Å(reported)

This is a Full wwPDB X-ray Structure Validation Report for a publicly released PDB entry.

We welcome your comments at [validation@mail.wwpdb.org](mailto:validation@mail.wwpdb.org)

A user guide is available at

<https://www.wwpdb.org/validation/2017/XrayValidationReportHelp>

with specific help available everywhere you see the ⓘ symbol.

The types of validation reports are described at

<http://www.wwpdb.org/validation/2017/FAQs#types>.

---

The following versions of software and data (see [references ⓘ](#)) were used in the production of this report:

MolProbity : 4.02b-467  
Mogul : 1.8.5 (274361), CSD as541be (2020)  
Xtriage (Phenix) : 1.13  
EDS : 2.36  
buster-report : 1.1.7 (2018)  
Percentile statistics : 20191225.v01 (using entries in the PDB archive December 25th 2019)  
Refmac : 5.8.0158  
CCP4 : 7.0.044 (Gargrove)  
Ideal geometry (proteins) : Engh & Huber (2001)  
Ideal geometry (DNA, RNA) : Parkinson et al. (1996)  
Validation Pipeline (wwPDB-VP) : 2.36

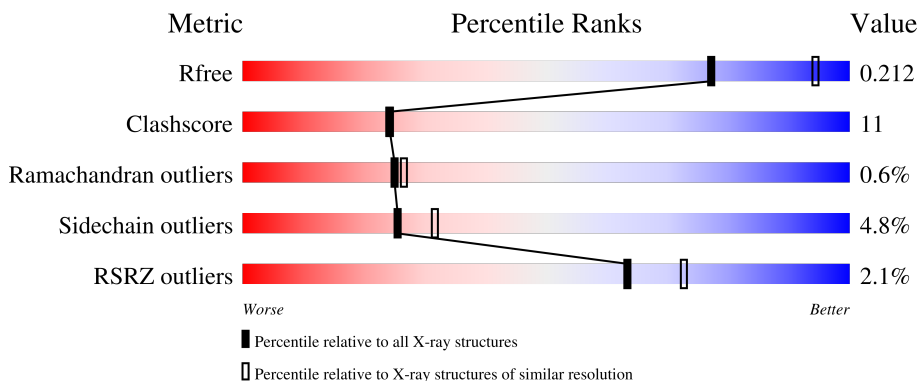
# 1 Overall quality at a glance i

The following experimental techniques were used to determine the structure:

*X-RAY DIFFRACTION*

The reported resolution of this entry is 2.34 Å.

Percentile scores (ranging between 0-100) for global validation metrics of the entry are shown in the following graphic. The table shows the number of entries on which the scores are based.



Metric	Whole archive (#Entries)	Similar resolution (#Entries, resolution range(Å))
$R_{free}$	130704	2096 (2.36-2.32)
Clashscore	141614	2193 (2.36-2.32)
Ramachandran outliers	138981	2159 (2.36-2.32)
Sidechain outliers	138945	2160 (2.36-2.32)
RSRZ outliers	127900	2067 (2.36-2.32)

The table below summarises the geometric issues observed across the polymeric chains and their fit to the electron density. The red, orange, yellow and green segments of the lower bar indicate the fraction of residues that contain outliers for  $\geq 3$ , 2, 1 and 0 types of geometric quality criteria respectively. A grey segment represents the fraction of residues that are not modelled. The numeric value for each fraction is indicated below the corresponding segment, with a dot representing fractions  $\leq 5\%$ . The upper red bar (where present) indicates the fraction of residues that have poor fit to the electron density. The numeric value is given above the bar.

Mol	Chain	Length	Quality of chain
1	A	536	 2% 79% 18%
1	B	536	 2% 79% 19%

## 2 Entry composition

There are 5 unique types of molecules in this entry. The entry contains 9353 atoms, of which 8 are hydrogens and 0 are deuteriums.

In the tables below, the ZeroOcc column contains the number of atoms modelled with zero occupancy, the AltConf column contains the number of residues with at least one atom in alternate conformation and the Trace column contains the number of residues modelled with at most 2 atoms.

- Molecule 1 is a protein called Cryptochrome-1.

Mol	Chain	Residues	Atoms					ZeroOcc	AltConf	Trace
			Total	C	N	O	S			
1	A	534	4325	2767	764	770	24	0	0	0
1	B	536	4329	2771	763	771	24	0	0	0

There are 12 discrepancies between the modelled and reference sequences:

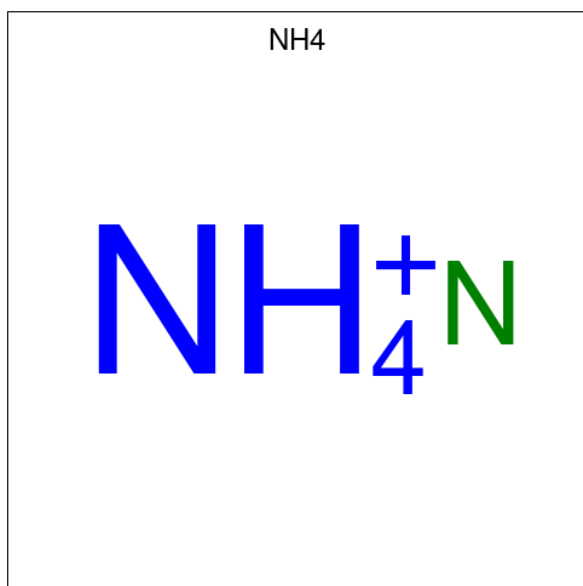
Chain	Residue	Modelled	Actual	Comment	Reference
A	0	ALA	-	expression tag	UNP O77059
A	?	-	ARG	deletion	UNP O77059
A	?	-	ALA	deletion	UNP O77059
A	?	-	CYS	deletion	UNP O77059
A	?	-	VAL	deletion	UNP O77059
A	?	-	ARG	deletion	UNP O77059
B	0	ALA	-	expression tag	UNP O77059
B	?	-	ARG	deletion	UNP O77059
B	?	-	ALA	deletion	UNP O77059
B	?	-	CYS	deletion	UNP O77059
B	?	-	VAL	deletion	UNP O77059
B	?	-	ARG	deletion	UNP O77059

- Molecule 2 is FLAVIN-ADENINE DINUCLEOTIDE (three-letter code: FAD) (formula:  $C_{27}H_{33}N_9O_{15}P_2$ ).



Mol	Chain	Residues	Atoms				ZeroOcc	AltConf	
			Total	C	N	O			P
2	A	1	53	27	9	15	2	0	0
2	B	1	53	27	9	15	2	0	0

- Molecule 3 is AMMONIUM ION (three-letter code: NH4) (formula: H<sub>4</sub>N).



Mol	Chain	Residues	Atoms		ZeroOcc	AltConf
			Total	H N		
3	A	1	5	4 1	0	0
3	B	1	5	4 1	0	0

- Molecule 4 is SODIUM ION (three-letter code: NA) (formula: Na).

Mol	Chain	Residues	Atoms		ZeroOcc	AltConf
4	B	1	Total 1	Na 1	0	0

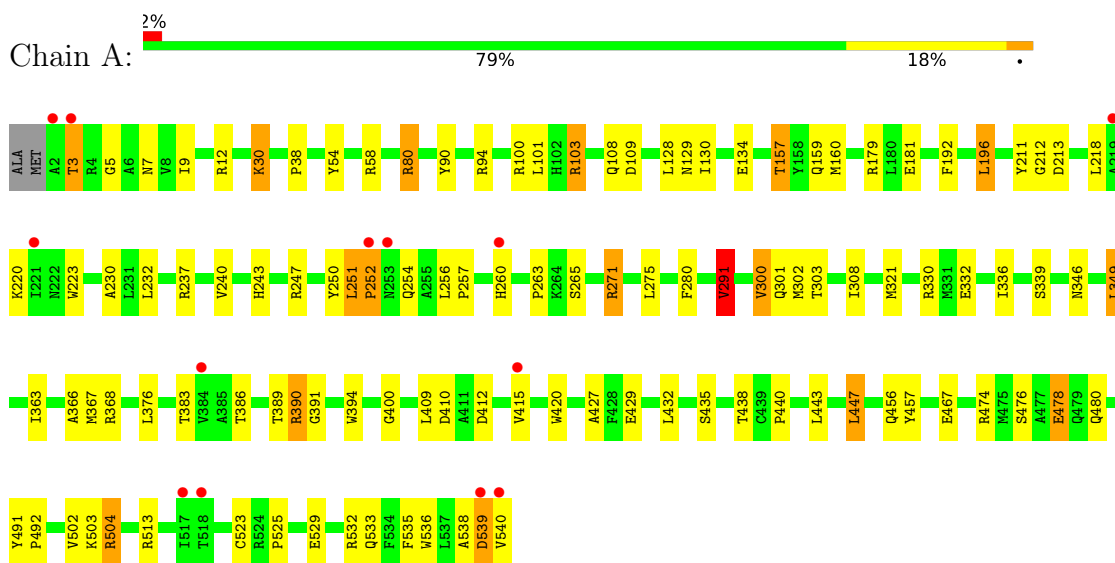
- Molecule 5 is water.

Mol	Chain	Residues	Atoms		ZeroOcc	AltConf
5	A	309	Total 309	O 309	0	0
5	B	273	Total 273	O 273	0	0

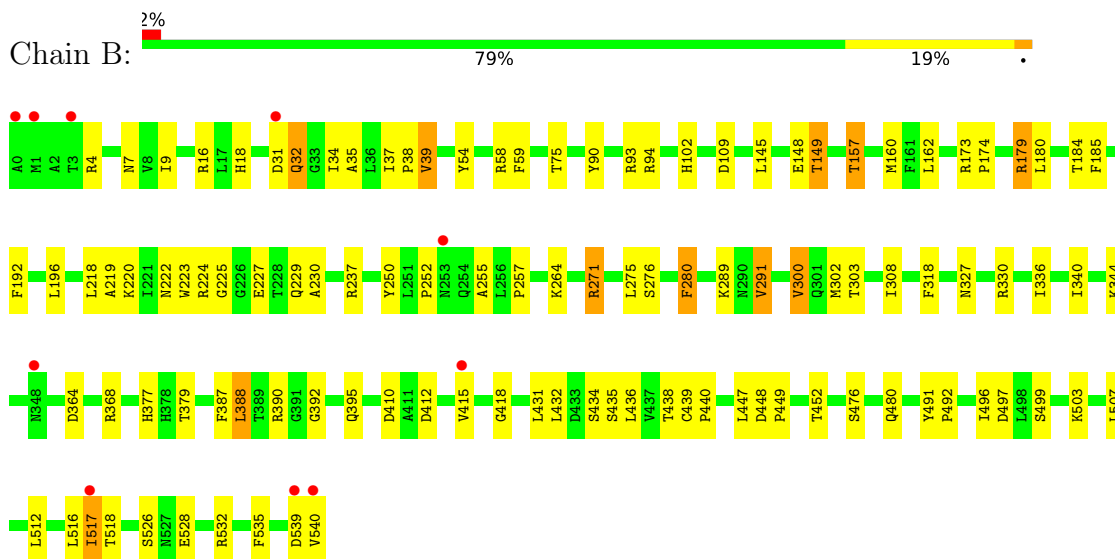
### 3 Residue-property plots i

These plots are drawn for all protein, RNA, DNA and oligosaccharide chains in the entry. The first graphic for a chain summarises the proportions of the various outlier classes displayed in the second graphic. The second graphic shows the sequence view annotated by issues in geometry and electron density. Residues are color-coded according to the number of geometric quality criteria for which they contain at least one outlier: green = 0, yellow = 1, orange = 2 and red = 3 or more. A red dot above a residue indicates a poor fit to the electron density ( $RSRZ > 2$ ). Stretches of 2 or more consecutive residues without any outlier are shown as a green connector. Residues present in the sample, but not in the model, are shown in grey.

#### • Molecule 1: Cryptochrome-1



#### • Molecule 1: Cryptochrome-1



## 4 Data and refinement statistics

Property	Value	Source
Space group	C 1 2 1	Depositor
Cell constants a, b, c, $\alpha$ , $\beta$ , $\gamma$	154.16Å 81.46Å 116.68Å 90.00° 120.19° 90.00°	Depositor
Resolution (Å)	28.87 – 2.34 28.87 – 2.34	Depositor EDS
% Data completeness (in resolution range)	99.8 (28.87-2.34) 99.8 (28.87-2.34)	Depositor EDS
$R_{merge}$	(Not available)	Depositor
$R_{sym}$	(Not available)	Depositor
$\langle I/\sigma(I) \rangle$ <sup>1</sup>	4.27 (at 2.34Å)	Xtrriage
Refinement program	PHENIX (phenix.refine: 1.6.4_486)	Depositor
R, $R_{free}$	0.172 , 0.222 0.163 , 0.212	Depositor DCC
$R_{free}$ test set	2639 reflections (5.00%)	wwPDB-VP
Wilson B-factor (Å <sup>2</sup> )	30.6	Xtrriage
Anisotropy	0.339	Xtrriage
Bulk solvent $k_{sol}$ (e/Å <sup>3</sup> ), $B_{sol}$ (Å <sup>2</sup> )	0.31 , 36.4	EDS
L-test for twinning <sup>2</sup>	$\langle  L  \rangle = 0.49$ , $\langle L^2 \rangle = 0.32$	Xtrriage
Estimated twinning fraction	No twinning to report.	Xtrriage
$F_o, F_c$ correlation	0.96	EDS
Total number of atoms	9353	wwPDB-VP
Average B, all atoms (Å <sup>2</sup> )	31.0	wwPDB-VP

Xtrriage's analysis on translational NCS is as follows: *The largest off-origin peak in the Patterson function is 7.27% of the height of the origin peak. No significant pseudotranslation is detected.*

<sup>1</sup>Intensities estimated from amplitudes.

<sup>2</sup>Theoretical values of  $\langle |L| \rangle$ ,  $\langle L^2 \rangle$  for acentric reflections are 0.5, 0.333 respectively for untwinned datasets, and 0.375, 0.2 for perfectly twinned datasets.

## 5 Model quality

### 5.1 Standard geometry

Bond lengths and bond angles in the following residue types are not validated in this section: NA, FAD, NH4

The Z score for a bond length (or angle) is the number of standard deviations the observed value is removed from the expected value. A bond length (or angle) with  $|Z| > 5$  is considered an outlier worth inspection. RMSZ is the root-mean-square of all Z scores of the bond lengths (or angles).

Mol	Chain	Bond lengths		Bond angles	
		RMSZ	# Z  >5	RMSZ	# Z  >5
1	A	0.35	0/4445	0.50	0/6041
1	B	0.33	0/4449	0.49	0/6048
All	All	0.34	0/8894	0.49	0/12089

There are no bond length outliers.

There are no bond angle outliers.

There are no chirality outliers.

There are no planarity outliers.

### 5.2 Too-close contacts

In the following table, the Non-H and H(model) columns list the number of non-hydrogen atoms and hydrogen atoms in the chain respectively. The H(added) column lists the number of hydrogen atoms added and optimized by MolProbity. The Clashes column lists the number of clashes within the asymmetric unit, whereas Symm-Clashes lists symmetry-related clashes.

Mol	Chain	Non-H	H(model)	H(added)	Clashes	Symm-Clashes
1	A	4325	0	4217	94	0
1	B	4329	0	4221	105	0
2	A	53	0	31	0	0
2	B	53	0	31	0	0
3	A	1	4	0	0	0
3	B	1	4	0	0	0
4	B	1	0	0	0	0
5	A	309	0	0	9	0
5	B	273	0	0	12	0
All	All	9345	8	8500	190	0

The all-atom clashscore is defined as the number of clashes found per 1000 atoms (including



hydrogen atoms). The all-atom clashscore for this structure is 11.

All (190) close contacts within the same asymmetric unit are listed below, sorted by their clash magnitude.

Atom-1	Atom-2	Interatomic distance (Å)	Clash overlap (Å)
1:B:179:ARG:HH11	1:B:179:ARG:HG2	1.08	1.16
1:A:157:THR:HG22	1:A:160:MET:H	1.18	1.03
1:B:157:THR:HG22	1:B:160:MET:H	1.24	1.03
1:A:192:PHE:CZ	1:A:196:LEU:HD22	2.03	0.94
1:A:250:TYR:O	1:A:252:PRO:HD2	1.68	0.93
1:A:250:TYR:C	1:A:252:PRO:HD2	1.90	0.91
1:B:145:LEU:O	1:B:149:THR:HG23	1.70	0.90
1:A:257:PRO:HG3	1:A:536:TRP:CE3	2.06	0.90
1:A:321:MET:CE	1:A:523:CYS:HB2	2.02	0.90
1:A:321:MET:CE	1:A:336:ILE:HD13	2.03	0.88
1:A:321:MET:HE3	1:A:523:CYS:HB2	1.57	0.87
1:B:250:TYR:HB3	1:B:302:MET:CE	2.05	0.87
1:B:192:PHE:CZ	1:B:196:LEU:HD12	2.10	0.86
1:B:220:LYS:HE3	1:B:222:ASN:OD1	1.78	0.83
1:B:179:ARG:HG2	1:B:179:ARG:NH1	1.90	0.82
1:B:179:ARG:HH11	1:B:179:ARG:CG	1.89	0.81
1:B:517:ILE:HG13	1:B:518:THR:N	1.95	0.80
1:A:157:THR:CG2	1:A:160:MET:H	1.94	0.80
1:B:250:TYR:HB3	1:B:302:MET:HE1	1.64	0.77
1:A:300:VAL:HG22	1:B:303:THR:CG2	2.16	0.76
1:B:237:ARG:NH2	1:B:308:ILE:HD13	2.00	0.75
1:A:157:THR:HG22	1:A:160:MET:N	2.00	0.75
1:B:179:ARG:NE	1:B:179:ARG:HA	2.05	0.71
1:A:429:GLU:HG2	5:A:1008:HOH:O	1.90	0.71
1:A:7:ASN:OD1	1:A:103:ARG:HG3	1.89	0.71
1:A:529:GLU:HG3	5:A:913:HOH:O	1.90	0.71
1:A:532:ARG:HH21	1:A:539:ASP:HA	1.55	0.70
1:B:250:TYR:HB3	1:B:302:MET:HE2	1.74	0.69
1:A:300:VAL:HG22	1:B:303:THR:HG23	1.73	0.69
1:A:504:ARG:HD2	5:A:1007:HOH:O	1.92	0.69
1:A:237:ARG:CZ	5:A:843:HOH:O	2.40	0.68
1:B:184:THR:HG21	5:B:969:HOH:O	1.95	0.67
1:B:31:ASP:OD2	1:B:32:GLN:HG2	1.93	0.67
1:B:257:PRO:HG2	1:B:447:LEU:CD2	2.24	0.67
1:A:321:MET:HE1	1:A:336:ILE:HD13	1.78	0.66
1:A:181:GLU:H	1:A:181:GLU:CD	1.99	0.65
1:A:263:PRO:HB2	5:A:806:HOH:O	1.96	0.65
1:B:439:CYS:SG	5:B:852:HOH:O	2.55	0.65

*Continued on next page...*

*Continued from previous page...*

Atom-1	Atom-2	Interatomic distance (Å)	Clash overlap (Å)
1:A:321:MET:HE1	1:A:523:CYS:HB2	1.77	0.64
1:B:255:ALA:HB3	5:B:946:HOH:O	1.96	0.64
1:A:532:ARG:NH2	1:A:539:ASP:HA	2.13	0.63
1:A:438:THR:O	1:A:440:PRO:HD3	1.99	0.63
1:A:435:SER:HB3	1:A:502:VAL:HG21	1.82	0.62
1:A:438:THR:O	1:A:438:THR:HG22	1.98	0.61
1:A:303:THR:CG2	1:B:300:VAL:HG22	2.31	0.61
1:B:517:ILE:CG1	1:B:518:THR:N	2.64	0.60
1:B:237:ARG:CZ	1:B:308:ILE:HD13	2.32	0.60
1:B:18:HIS:HE1	1:B:276:SER:H	1.50	0.59
1:B:257:PRO:HG2	1:B:447:LEU:HD21	1.84	0.59
1:A:443:LEU:HG	1:A:447:LEU:HD22	1.85	0.59
1:B:452:THR:HG22	5:B:963:HOH:O	2.04	0.58
1:A:250:TYR:C	1:A:252:PRO:CD	2.70	0.58
1:A:412:ASP:HB2	1:A:415:VAL:HB	1.86	0.58
1:B:517:ILE:HG13	1:B:518:THR:H	1.66	0.57
1:A:476:SER:O	1:A:480:GLN:HG3	2.03	0.57
1:B:300:VAL:O	1:B:300:VAL:HG13	2.03	0.57
1:B:436:LEU:HD22	1:B:540:VAL:CG1	2.34	0.57
1:A:386:THR:O	1:A:389:THR:O	2.21	0.57
1:B:223:TRP:HB2	5:B:830:HOH:O	2.04	0.57
1:A:108:GLN:HB2	1:A:134:GLU:OE2	2.05	0.57
1:B:157:THR:CG2	1:B:160:MET:H	2.09	0.57
1:B:432:LEU:HD21	1:B:535:PHE:CE2	2.40	0.56
1:A:7:ASN:CG	1:A:103:ARG:HG3	2.25	0.56
1:B:388:LEU:HD22	1:B:395:GLN:HB2	1.87	0.56
1:B:539:ASP:O	1:B:540:VAL:HG23	2.05	0.56
1:A:435:SER:HA	1:A:438:THR:HB	1.88	0.56
1:B:436:LEU:HD22	1:B:540:VAL:HG12	1.86	0.56
1:A:291:VAL:O	1:A:291:VAL:HG23	2.06	0.56
1:B:9:ILE:HG23	1:B:38:PRO:HA	1.88	0.56
1:A:321:MET:HE2	1:A:336:ILE:HD13	1.83	0.56
1:B:18:HIS:CE1	1:B:276:SER:H	2.24	0.56
1:B:438:THR:O	1:B:440:PRO:HD3	2.07	0.55
1:A:491:TYR:CD1	1:A:492:PRO:HD2	2.41	0.55
1:B:440:PRO:HD2	5:B:852:HOH:O	2.05	0.55
1:B:157:THR:HG23	1:B:526:SER:OG	2.05	0.55
1:A:54:TYR:OH	1:A:58:ARG:NH1	2.41	0.53
1:B:291:VAL:CG1	1:B:291:VAL:O	2.55	0.53
1:B:517:ILE:HD12	1:B:517:ILE:C	2.29	0.53
1:A:251:LEU:N	1:A:252:PRO:HD2	2.24	0.53

*Continued on next page...*

*Continued from previous page...*

Atom-1	Atom-2	Interatomic distance (Å)	Clash overlap (Å)
1:B:90:TYR:CD1	1:B:94:ARG:NH1	2.77	0.53
1:A:12:ARG:N	1:A:12:ARG:HD3	2.24	0.53
1:A:260:HIS:CE1	1:A:456:GLN:OE1	2.61	0.53
1:B:476:SER:O	1:B:480:GLN:HG3	2.09	0.53
1:A:251:LEU:HD11	1:B:250:TYR:HD2	1.74	0.53
1:A:223:TRP:HB2	5:A:808:HOH:O	2.07	0.53
1:A:243:HIS:HB3	1:A:247:ARG:NH1	2.24	0.52
1:B:412:ASP:HB2	1:B:415:VAL:HB	1.90	0.52
1:B:491:TYR:CD1	1:B:492:PRO:HD2	2.44	0.52
1:A:240:VAL:HG23	5:A:857:HOH:O	2.08	0.52
1:B:94:ARG:CB	1:B:196:LEU:HD11	2.40	0.52
1:A:429:GLU:HG3	1:A:525:PRO:HG2	1.91	0.52
1:B:340:ILE:HG12	1:B:512:LEU:CD2	2.40	0.52
1:B:496:ILE:HG12	1:B:497:ASP:N	2.25	0.52
1:A:302:MET:CE	1:B:302:MET:SD	2.99	0.51
1:B:59:PHE:CZ	1:B:225:GLY:HA2	2.46	0.51
1:B:94:ARG:HB2	1:B:196:LEU:HD11	1.93	0.51
1:A:101:LEU:HB2	1:A:130:ILE:HD13	1.93	0.50
1:A:300:VAL:CG2	1:B:303:THR:CG2	2.86	0.50
1:A:251:LEU:N	1:A:252:PRO:CD	2.75	0.50
1:B:387:PHE:O	1:B:392:GLY:HA3	2.11	0.50
1:A:346:ASN:ND2	1:A:349:LEU:HD22	2.27	0.49
1:A:223:TRP:HZ3	1:A:265:SER:O	1.96	0.49
1:B:539:ASP:HA	5:B:953:HOH:O	2.13	0.49
1:A:192:PHE:CE2	1:A:196:LEU:HD22	2.46	0.49
1:B:34:ILE:HD13	1:B:102:HIS:ND1	2.28	0.49
1:A:260:HIS:NE2	1:A:456:GLN:OE1	2.45	0.48
1:B:18:HIS:HE1	1:B:276:SER:HB3	1.77	0.48
1:A:252:PRO:C	1:A:254:GLN:H	2.15	0.48
1:A:538:ALA:C	1:A:540:VAL:N	2.66	0.48
1:B:9:ILE:HG23	1:B:9:ILE:O	2.12	0.48
1:B:318:PHE:CD1	1:B:418:GLY:HA3	2.49	0.48
1:B:179:ARG:HA	1:B:179:ARG:CZ	2.44	0.48
1:B:516:LEU:C	1:B:517:ILE:HG23	2.34	0.48
1:A:300:VAL:O	1:A:300:VAL:HG13	2.12	0.48
1:A:332:GLU:HA	1:A:332:GLU:OE1	2.13	0.48
1:B:435:SER:HA	1:B:438:THR:HB	1.96	0.47
1:B:35:ALA:HB2	1:B:184:THR:HG22	1.96	0.47
1:B:157:THR:HG22	1:B:160:MET:N	2.08	0.47
1:B:173:ARG:HB3	1:B:174:PRO:HD2	1.96	0.47
1:A:389:THR:O	1:A:391:GLY:N	2.43	0.47

*Continued on next page...*

*Continued from previous page...*

Atom-1	Atom-2	Interatomic distance (Å)	Clash overlap (Å)
1:B:271:ARG:HD3	1:B:271:ARG:C	2.34	0.47
1:B:179:ARG:NH1	1:B:179:ARG:CG	2.57	0.47
1:B:54:TYR:CE2	1:B:58:ARG:HG3	2.49	0.47
1:B:4:ARG:O	1:B:102:HIS:HE1	1.97	0.47
1:B:224:ARG:HB3	1:B:229:GLN:HG3	1.96	0.47
1:A:257:PRO:HG3	1:A:536:TRP:CD2	2.47	0.46
1:A:300:VAL:CG2	1:B:303:THR:HG21	2.46	0.46
1:A:438:THR:O	1:A:438:THR:CG2	2.64	0.46
1:B:218:LEU:HD23	1:B:218:LEU:C	2.35	0.46
1:A:237:ARG:HH21	1:A:308:ILE:HD13	1.80	0.46
1:B:327:ASN:OD1	1:B:330:ARG:NH2	2.49	0.46
1:B:539:ASP:O	1:B:540:VAL:CB	2.64	0.46
1:A:474:ARG:HG2	1:A:474:ARG:HH11	1.81	0.45
1:B:252:PRO:HG2	5:B:966:HOH:O	2.15	0.45
1:A:192:PHE:CZ	1:A:196:LEU:CD2	2.88	0.45
1:B:218:LEU:HD23	1:B:219:ALA:N	2.31	0.45
1:B:516:LEU:O	1:B:518:THR:N	2.43	0.45
1:B:18:HIS:HD2	1:B:227:GLU:OE2	2.00	0.45
1:B:192:PHE:CZ	1:B:196:LEU:CD1	2.92	0.45
1:B:377:HIS:ND1	1:B:379:THR:HG22	2.32	0.45
1:A:467:GLU:O	1:A:467:GLU:HG2	2.17	0.45
1:B:229:GLN:HG2	5:B:921:HOH:O	2.16	0.45
1:A:303:THR:HG23	1:B:300:VAL:HG22	1.98	0.45
1:A:3:THR:O	1:A:3:THR:OG1	2.35	0.45
1:B:75:THR:HG21	1:B:185:PHE:CE2	2.52	0.45
1:A:432:LEU:HD21	1:A:535:PHE:CE2	2.52	0.45
1:A:9:ILE:HG23	1:A:38:PRO:HA	1.98	0.45
1:A:80:ARG:HH11	1:A:80:ARG:HG3	1.81	0.44
1:A:157:THR:HG23	1:A:159:GLN:H	1.82	0.44
1:A:128:LEU:O	1:A:129:ASN:HB3	2.17	0.44
1:B:364:ASP:O	1:B:368:ARG:HG3	2.17	0.44
1:B:230:ALA:HB1	1:B:275:LEU:HB2	1.99	0.44
1:A:533:GLN:NE2	5:A:913:HOH:O	2.50	0.44
1:B:18:HIS:CD2	1:B:227:GLU:OE2	2.71	0.44
1:A:90:TYR:O	1:A:94:ARG:HG2	2.18	0.44
1:A:390:ARG:HA	1:A:394:TRP:CZ3	2.52	0.43
1:A:427:ALA:O	1:A:513:ARG:HD3	2.18	0.43
1:A:478:GLU:CD	1:A:478:GLU:H	2.21	0.43
1:B:280:PHE:O	1:B:280:PHE:HD1	2.01	0.43
1:B:436:LEU:CD2	1:B:540:VAL:HG12	2.49	0.43
1:B:431:LEU:HD22	1:B:528:GLU:CG	2.49	0.43

*Continued on next page...*

Continued from previous page...

Atom-1	Atom-2	Interatomic distance (Å)	Clash overlap (Å)
1:A:391:GLY:O	1:A:438:THR:HG21	2.18	0.42
1:B:18:HIS:CE1	1:B:276:SER:HB3	2.53	0.42
1:A:271:ARG:NH2	5:A:834:HOH:O	2.52	0.42
1:B:37:ILE:HG22	1:B:39:VAL:HG12	2.01	0.42
1:B:148:GLU:HA	1:B:148:GLU:OE1	2.19	0.42
1:B:431:LEU:O	1:B:434:SER:HB3	2.19	0.42
1:B:180:LEU:HB2	5:B:795:HOH:O	2.20	0.42
1:A:368:ARG:HD2	1:A:457:TYR:O	2.20	0.42
1:B:291:VAL:O	1:B:291:VAL:HG13	2.20	0.42
1:A:363:ILE:O	1:A:367:MET:HG2	2.20	0.42
1:A:5:GLY:HA2	1:A:100:ARG:O	2.20	0.41
1:B:93:ARG:HD3	5:B:734:HOH:O	2.21	0.41
1:A:211:TYR:C	1:A:213:ASP:H	2.24	0.41
1:A:366:ALA:O	1:A:376:LEU:HD21	2.21	0.41
1:A:30:LYS:HB2	1:A:30:LYS:HE2	1.84	0.41
1:A:538:ALA:C	1:A:540:VAL:H	2.23	0.41
1:B:7:ASN:OD1	1:B:102:HIS:HB2	2.21	0.41
1:B:448:ASP:N	1:B:449:PRO:HD3	2.36	0.41
1:B:532:ARG:NH1	5:B:953:HOH:O	2.53	0.41
1:A:230:ALA:HB1	1:A:275:LEU:HB2	2.02	0.41
1:A:383:THR:OG1	1:A:443:LEU:HD21	2.20	0.41
1:B:336:ILE:C	1:B:336:ILE:HD12	2.41	0.41
1:B:431:LEU:HD22	1:B:528:GLU:HG2	2.02	0.41
1:B:9:ILE:CG2	1:B:38:PRO:HA	2.50	0.40
1:A:301:GLN:HE22	1:B:162:LEU:HD21	1.86	0.40
1:A:223:TRP:CD1	1:A:409:LEU:HD11	2.55	0.40
1:A:9:ILE:HG23	1:A:9:ILE:O	2.21	0.40
1:A:400:GLY:HA3	1:A:420:TRP:CH2	2.56	0.40
1:B:16:ARG:HD2	1:B:18:HIS:CE1	2.56	0.40

There are no symmetry-related clashes.

## 5.3 Torsion angles [i](#)

### 5.3.1 Protein backbone [i](#)

In the following table, the Percentiles column shows the percent Ramachandran outliers of the chain as a percentile score with respect to all X-ray entries followed by that with respect to entries of similar resolution.

The Analysed column shows the number of residues for which the backbone conformation was analysed, and the total number of residues.

Mol	Chain	Analysed	Favoured	Allowed	Outliers	Percentiles	
1	A	532/536 (99%)	510 (96%)	18 (3%)	4 (1%)	19	20
1	B	534/536 (100%)	514 (96%)	18 (3%)	2 (0%)	34	38
All	All	1066/1072 (99%)	1024 (96%)	36 (3%)	6 (1%)	25	26

All (6) Ramachandran outliers are listed below:

Mol	Chain	Res	Type
1	A	252	PRO
1	A	539	ASP
1	B	390	ARG
1	B	289	LYS
1	A	291	VAL
1	A	212	GLY

### 5.3.2 Protein sidechains [i](#)

In the following table, the Percentiles column shows the percent sidechain outliers of the chain as a percentile score with respect to all X-ray entries followed by that with respect to entries of similar resolution.

The Analysed column shows the number of residues for which the sidechain conformation was analysed, and the total number of residues.

Mol	Chain	Analysed	Rotameric	Outliers	Percentiles	
1	A	463/469 (99%)	437 (94%)	26 (6%)	21	24
1	B	463/469 (99%)	445 (96%)	18 (4%)	32	41
All	All	926/938 (99%)	882 (95%)	44 (5%)	25	32

All (44) residues with a non-rotameric sidechain are listed below:

Mol	Chain	Res	Type
1	A	3	THR
1	A	30	LYS
1	A	80	ARG
1	A	103	ARG
1	A	109	ASP
1	A	157	THR
1	A	179	ARG
1	A	196	LEU
1	A	218	LEU
1	A	220	LYS

*Continued on next page...*

*Continued from previous page...*

Mol	Chain	Res	Type
1	A	232	LEU
1	A	251	LEU
1	A	256	LEU
1	A	271	ARG
1	A	280	PHE
1	A	291	VAL
1	A	300	VAL
1	A	330	ARG
1	A	339	SER
1	A	349	LEU
1	A	390	ARG
1	A	410	ASP
1	A	447	LEU
1	A	478	GLU
1	A	503	LYS
1	A	504	ARG
1	B	32	GLN
1	B	39	VAL
1	B	109	ASP
1	B	149	THR
1	B	157	THR
1	B	179	ARG
1	B	264	LYS
1	B	271	ARG
1	B	280	PHE
1	B	291	VAL
1	B	300	VAL
1	B	344	LYS
1	B	388	LEU
1	B	410	ASP
1	B	499	SER
1	B	503	LYS
1	B	507	LEU
1	B	517	ILE

Sometimes sidechains can be flipped to improve hydrogen bonding and reduce clashes. All (4) such sidechains are listed below:

Mol	Chain	Res	Type
1	A	102	HIS
1	B	18	HIS
1	B	102	HIS
1	B	269	HIS

### 5.3.3 RNA [i](#)

There are no RNA molecules in this entry.

## 5.4 Non-standard residues in protein, DNA, RNA chains [i](#)

There are no non-standard protein/DNA/RNA residues in this entry.

## 5.5 Carbohydrates [i](#)

There are no monosaccharides in this entry.

## 5.6 Ligand geometry [i](#)

Of 5 ligands modelled in this entry, 2 are modelled with single atom and 1 is monoatomic - leaving 2 for Mogul analysis.

In the following table, the Counts columns list the number of bonds (or angles) for which Mogul statistics could be retrieved, the number of bonds (or angles) that are observed in the model and the number of bonds (or angles) that are defined in the Chemical Component Dictionary. The Link column lists molecule types, if any, to which the group is linked. The Z score for a bond length (or angle) is the number of standard deviations the observed value is removed from the expected value. A bond length (or angle) with  $|Z| > 2$  is considered an outlier worth inspection. RMSZ is the root-mean-square of all Z scores of the bond lengths (or angles).

Mol	Type	Chain	Res	Link	Bond lengths			Bond angles		
					Counts	RMSZ	# Z  > 2	Counts	RMSZ	# Z  > 2
2	FAD	A	601	-	53,58,58	1.08	4 (7%)	68,89,89	1.34	9 (13%)
2	FAD	B	601	4	53,58,58	1.09	4 (7%)	68,89,89	1.41	11 (16%)

In the following table, the Chirals column lists the number of chiral outliers, the number of chiral centers analysed, the number of these observed in the model and the number defined in the Chemical Component Dictionary. Similar counts are reported in the Torsion and Rings columns. '-' means no outliers of that kind were identified.

Mol	Type	Chain	Res	Link	Chirals	Torsions	Rings
2	FAD	A	601	-	-	3/30/50/50	0/6/6/6
2	FAD	B	601	4	-	1/30/50/50	0/6/6/6

All (8) bond length outliers are listed below:



Mol	Chain	Res	Type	Atoms	Z	Observed(Å)	Ideal(Å)
2	A	601	FAD	C4X-N5	3.76	1.38	1.30
2	B	601	FAD	C4X-N5	3.75	1.38	1.30
2	A	601	FAD	C2A-N3A	3.70	1.38	1.32
2	B	601	FAD	C2A-N3A	3.54	1.37	1.32
2	A	601	FAD	C10-N1	2.49	1.38	1.33
2	B	601	FAD	C2A-N1A	2.32	1.38	1.33
2	A	601	FAD	C2A-N1A	2.16	1.37	1.33
2	B	601	FAD	C10-N1	2.03	1.37	1.33

All (20) bond angle outliers are listed below:

Mol	Chain	Res	Type	Atoms	Z	Observed(°)	Ideal(°)
2	A	601	FAD	N3A-C2A-N1A	-5.36	120.29	128.68
2	B	601	FAD	N3A-C2A-N1A	-5.23	120.50	128.68
2	B	601	FAD	C4X-C10-N10	3.62	121.78	116.48
2	B	601	FAD	C4-N3-C2	-3.36	119.44	125.64
2	A	601	FAD	C4-N3-C2	-3.02	120.05	125.64
2	B	601	FAD	C4'-C3'-C2'	-2.89	107.35	113.36
2	A	601	FAD	C4X-C10-N10	2.85	120.65	116.48
2	A	601	FAD	C4'-C3'-C2'	-2.85	107.43	113.36
2	B	601	FAD	C5X-C9A-N10	2.72	120.76	117.95
2	A	601	FAD	C5X-C9A-N10	2.61	120.65	117.95
2	A	601	FAD	C4X-C4-N3	2.48	119.48	113.19
2	A	601	FAD	C4X-C10-N1	-2.46	119.03	124.73
2	B	601	FAD	C4X-C4-N3	2.43	119.37	113.19
2	A	601	FAD	O4-C4-C4X	-2.32	120.45	126.60
2	B	601	FAD	P-O3P-PA	-2.24	125.15	132.83
2	A	601	FAD	C4-C4X-C10	2.24	120.55	116.79
2	B	601	FAD	C10-C4X-N5	-2.20	120.19	124.86
2	B	601	FAD	C4X-C10-N1	-2.12	119.81	124.73
2	B	601	FAD	C1'-C2'-C3'	2.07	115.58	109.79
2	B	601	FAD	C9A-N10-C10	-2.01	117.63	120.77

There are no chirality outliers.

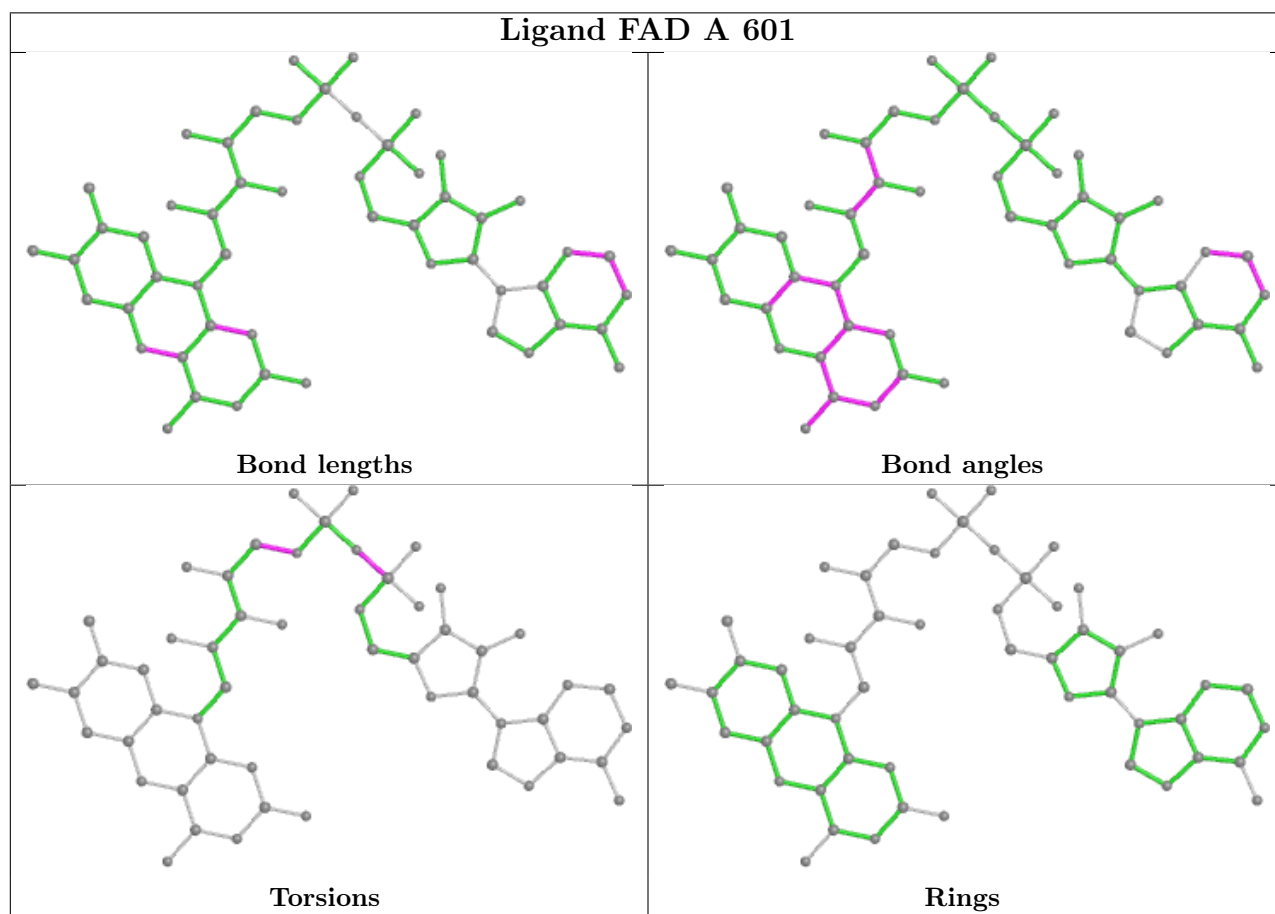
All (4) torsion outliers are listed below:

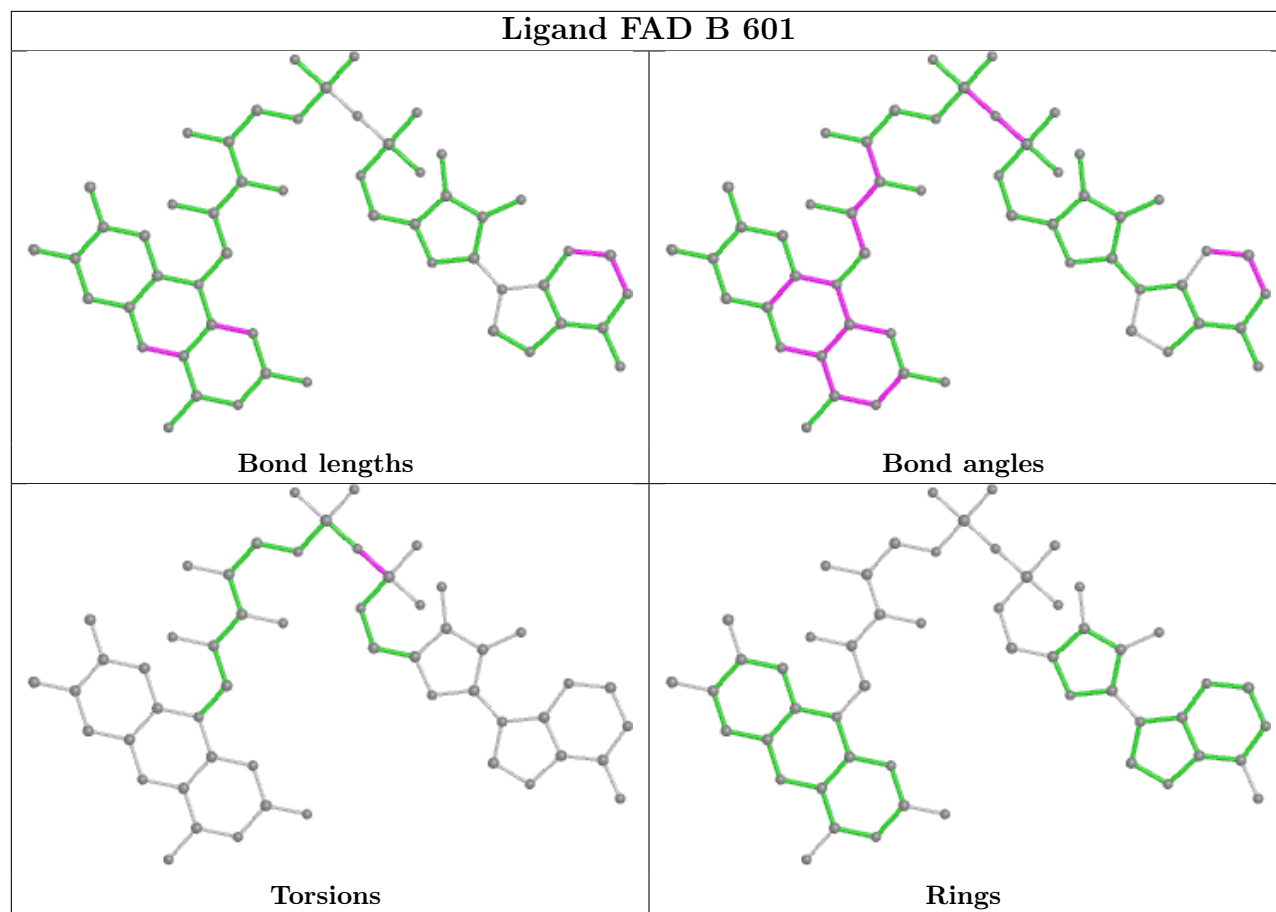
Mol	Chain	Res	Type	Atoms
2	B	601	FAD	P-O3P-PA-O2A
2	A	601	FAD	P-O3P-PA-O1A
2	A	601	FAD	P-O3P-PA-O2A
2	A	601	FAD	C4'-C5'-O5'-P

There are no ring outliers.

No monomer is involved in short contacts.

The following is a two-dimensional graphical depiction of Mogul quality analysis of bond lengths, bond angles, torsion angles, and ring geometry for all instances of the Ligand of Interest. In addition, ligands with molecular weight > 250 and outliers as shown on the validation Tables will also be included. For torsion angles, if less than 5% of the Mogul distribution of torsion angles is within 10 degrees of the torsion angle in question, then that torsion angle is considered an outlier. Any bond that is central to one or more torsion angles identified as an outlier by Mogul will be highlighted in the graph. For rings, the root-mean-square deviation (RMSD) between the ring in question and similar rings identified by Mogul is calculated over all ring torsion angles. If the average RMSD is greater than 60 degrees and the minimal RMSD between the ring in question and any Mogul-identified rings is also greater than 60 degrees, then that ring is considered an outlier. The outliers are highlighted in purple. The color gray indicates Mogul did not find sufficient equivalents in the CSD to analyse the geometry.





## 5.7 Other polymers [i](#)

There are no such residues in this entry.

## 5.8 Polymer linkage issues [i](#)

There are no chain breaks in this entry.

## 6 Fit of model and data

### 6.1 Protein, DNA and RNA chains

In the following table, the column labelled ‘#RSRZ > 2’ contains the number (and percentage) of RSRZ outliers, followed by percent RSRZ outliers for the chain as percentile scores relative to all X-ray entries and entries of similar resolution. The OWAB column contains the minimum, median, 95<sup>th</sup> percentile and maximum values of the occupancy-weighted average B-factor per residue. The column labelled ‘Q < 0.9’ lists the number of (and percentage) of residues with an average occupancy less than 0.9.

Mol	Chain	Analysed	<RSRZ>	#RSRZ>2	OWAB(Å <sup>2</sup> )	Q<0.9
1	A	534/536 (99%)	-0.22	13 (2%) 59 68	16, 29, 48, 72	0
1	B	536/536 (100%)	-0.11	10 (1%) 66 75	19, 31, 51, 75	0
All	All	1070/1072 (99%)	-0.16	23 (2%) 63 73	16, 30, 50, 75	0

All (23) RSRZ outliers are listed below:

Mol	Chain	Res	Type	RSRZ
1	A	540	VAL	4.7
1	A	2	ALA	4.4
1	B	540	VAL	4.1
1	A	517	ILE	3.8
1	A	253	ASN	3.6
1	A	518	THR	3.0
1	A	252	PRO	2.9
1	B	517	ILE	2.7
1	A	219	ALA	2.5
1	B	0	ALA	2.4
1	B	1	MET	2.4
1	A	384	VAL	2.3
1	B	348	ASN	2.3
1	B	3	THR	2.3
1	A	539	ASP	2.2
1	B	539	ASP	2.2
1	A	3	THR	2.1
1	A	221	ILE	2.1
1	B	253	ASN	2.1
1	B	415	VAL	2.1
1	B	31	ASP	2.1
1	A	260	HIS	2.0
1	A	415	VAL	2.0

## 6.2 Non-standard residues in protein, DNA, RNA chains [i](#)

There are no non-standard protein/DNA/RNA residues in this entry.

## 6.3 Carbohydrates [i](#)

There are no monosaccharides in this entry.

## 6.4 Ligands [i](#)

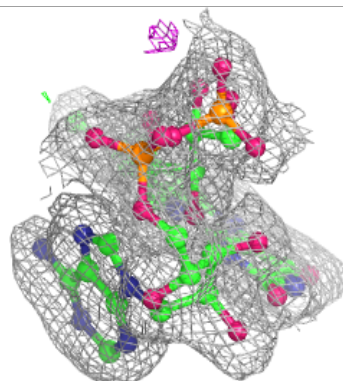
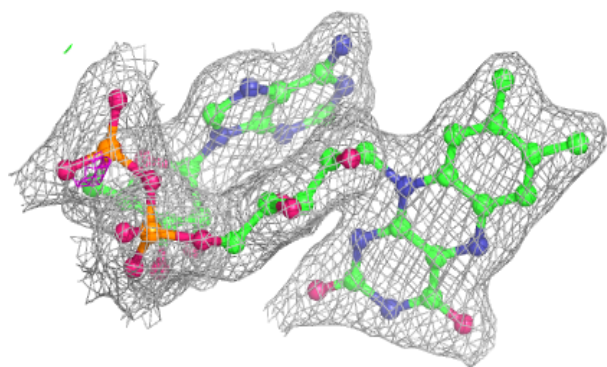
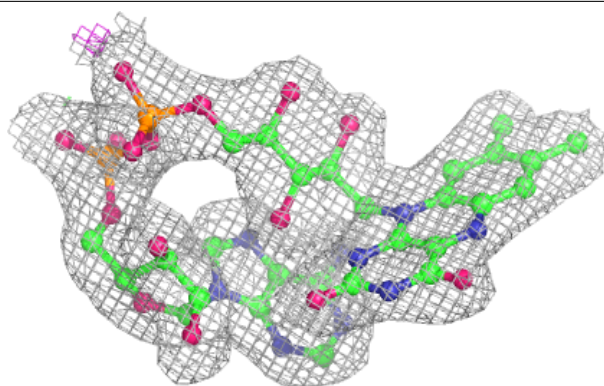
In the following table, the Atoms column lists the number of modelled atoms in the group and the number defined in the chemical component dictionary. The B-factors column lists the minimum, median, 95<sup>th</sup> percentile and maximum values of B factors of atoms in the group. The column labelled 'Q< 0.9' lists the number of atoms with occupancy less than 0.9.

Mol	Type	Chain	Res	Atoms	RSCC	RSR	B-factors(Å <sup>2</sup> )	Q<0.9
3	NH4	A	602	1/1	0.94	0.29	42,51,51,51	0
3	NH4	B	603	1/1	0.95	0.16	28,33,33,33	0
2	FAD	A	601	53/53	0.98	0.17	15,18,22,23	0
2	FAD	B	601	53/53	0.98	0.18	15,20,27,27	0
4	NA	B	602	1/1	0.99	0.25	27,27,27,27	0

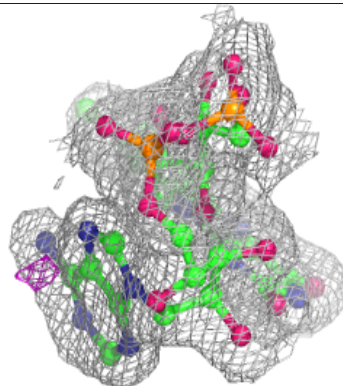
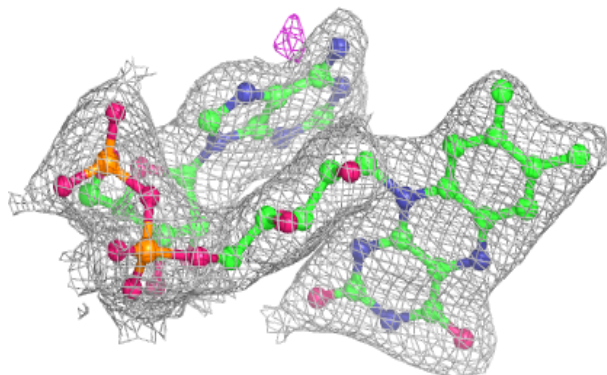
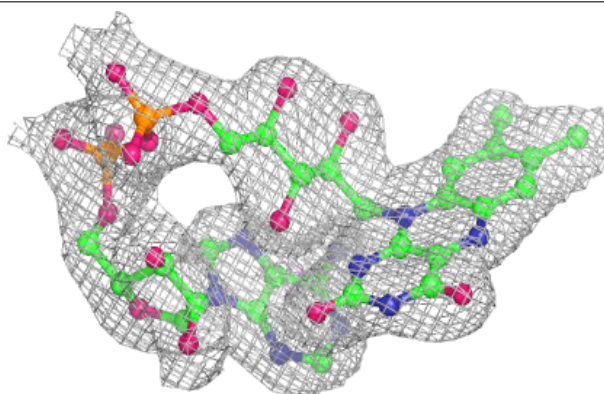
The following is a graphical depiction of the model fit to experimental electron density of all instances of the Ligand of Interest. In addition, ligands with molecular weight > 250 and outliers as shown on the geometry validation Tables will also be included. Each fit is shown from different orientation to approximate a three-dimensional view.

**Electron density around FAD A 601:**

$2mF_o-DF_c$  (at 0.7 rmsd) in gray  
 $mF_o-DF_c$  (at 3 rmsd) in purple (negative)  
and green (positive)

**Electron density around FAD B 601:**

$2mF_o-DF_c$  (at 0.7 rmsd) in gray  
 $mF_o-DF_c$  (at 3 rmsd) in purple (negative)  
and green (positive)



## 6.5 Other polymers [i](#)

There are no such residues in this entry.