



Full wwPDB X-ray Structure Validation Report ⓘ

Nov 15, 2023 – 06:48 PM JST

PDB ID : 6JUK
Title : Crystal structure of Formate dehydrogenase mutant C256I/E261P/S381I from Pseudomonas sp. 101 in complex with non-natural cofactor Nicotinamide Cytosine Dinucleotide
Authors : Feng, Y.; Xue, S.; Guo, X.; Zhao, Z.
Deposited on : 2019-04-14
Resolution : 2.29 Å(reported)

This is a Full wwPDB X-ray Structure Validation Report for a publicly released PDB entry.

We welcome your comments at validation@mail.wwpdb.org

A user guide is available at

<https://www.wwpdb.org/validation/2017/XrayValidationReportHelp>

with specific help available everywhere you see the ⓘ symbol.

The types of validation reports are described at

<http://www.wwpdb.org/validation/2017/FAQs#types>.

The following versions of software and data (see [references ⓘ](#)) were used in the production of this report:

MolProbity : 4.02b-467
Mogul : 1.8.5 (274361), CSD as541be (2020)
Xtrriage (Phenix) : 1.13
EDS : 2.36
buster-report : 1.1.7 (2018)
Percentile statistics : 20191225.v01 (using entries in the PDB archive December 25th 2019)
Refmac : 5.8.0158
CCP4 : 7.0.044 (Gargrove)
Ideal geometry (proteins) : Engh & Huber (2001)
Ideal geometry (DNA, RNA) : Parkinson et al. (1996)
Validation Pipeline (wwPDB-VP) : 2.36

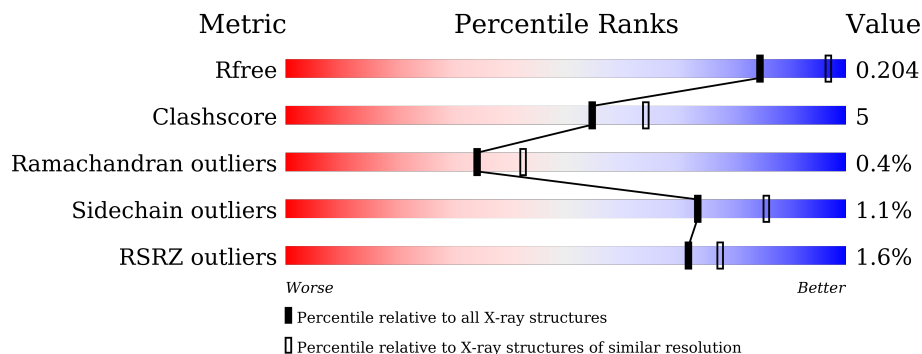
1 Overall quality at a glance

The following experimental techniques were used to determine the structure:

X-RAY DIFFRACTION

The reported resolution of this entry is 2.29 Å.

Percentile scores (ranging between 0-100) for global validation metrics of the entry are shown in the following graphic. The table shows the number of entries on which the scores are based.



Metric	Whole archive (#Entries)	Similar resolution (#Entries, resolution range(Å))
R_{free}	130704	5042 (2.30-2.30)
Clashscore	141614	5643 (2.30-2.30)
Ramachandran outliers	138981	5575 (2.30-2.30)
Sidechain outliers	138945	5575 (2.30-2.30)
RSRZ outliers	127900	4938 (2.30-2.30)

The table below summarises the geometric issues observed across the polymeric chains and their fit to the electron density. The red, orange, yellow and green segments of the lower bar indicate the fraction of residues that contain outliers for ≥ 3 , 2, 1 and 0 types of geometric quality criteria respectively. A grey segment represents the fraction of residues that are not modelled. The numeric value for each fraction is indicated below the corresponding segment, with a dot representing fractions $\leq 5\%$. The upper red bar (where present) indicates the fraction of residues that have poor fit to the electron density. The numeric value is given above the bar.

Mol	Chain	Length	Quality of chain
1	A	401	 2% 82% 10% 7%
1	B	401	 2% 85% 7% 7%

2 Entry composition [i](#)

There are 4 unique types of molecules in this entry. The entry contains 6361 atoms, of which 0 are hydrogens and 0 are deuteriums.

In the tables below, the ZeroOcc column contains the number of atoms modelled with zero occupancy, the AltConf column contains the number of residues with at least one atom in alternate conformation and the Trace column contains the number of residues modelled with at most 2 atoms.

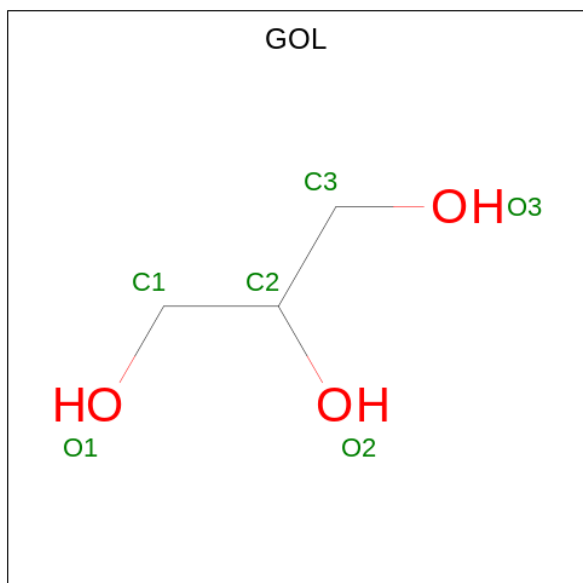
- Molecule 1 is a protein called Formate dehydrogenase.

Mol	Chain	Residues	Atoms					ZeroOcc	AltConf	Trace
			Total	C	N	O	S			
1	A	374	2920	1853	512	542	13	0	0	0
1	B	374	2920	1853	512	542	13	0	0	0

There are 6 discrepancies between the modelled and reference sequences:

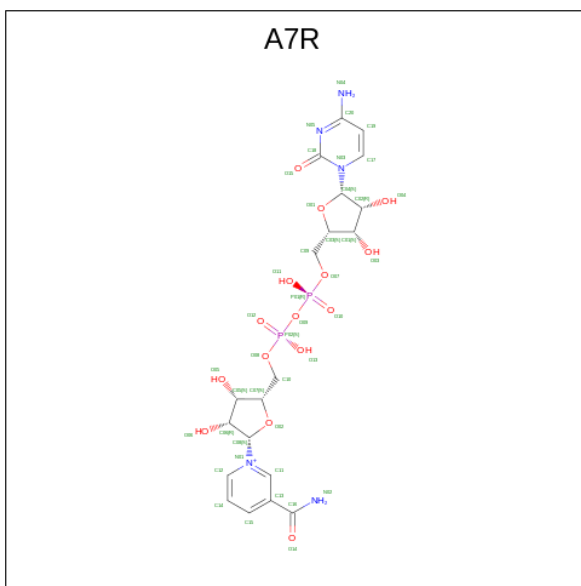
Chain	Residue	Modelled	Actual	Comment	Reference
A	256	ILE	CYS	engineered mutation	UNP P33160
A	261	PRO	GLU	engineered mutation	UNP P33160
A	381	ILE	SER	engineered mutation	UNP P33160
B	256	ILE	CYS	engineered mutation	UNP P33160
B	261	PRO	GLU	engineered mutation	UNP P33160
B	381	ILE	SER	engineered mutation	UNP P33160

- Molecule 2 is GLYCEROL (three-letter code: GOL) (formula: C₃H₈O₃).



Mol	Chain	Residues	Atoms			ZeroOcc	AltConf
2	A	1	Total	C	O	0	0
			6	3	3		
2	A	1	Total	C	O	0	0
			6	3	3		
2	A	1	Total	C	O	0	0
			6	3	3		
2	B	1	Total	C	O	0	0
			6	3	3		
2	B	1	Total	C	O	0	0
			6	3	3		

- Molecule 3 is [[(2S,3S,4R,5S)-5-(3-aminocarbonylpyridin-1-ium-1-yl)-3,4-bis(oxidanyl)oxolan-2-yl]methoxy-oxidanyl-phosphoryl] [(2S,3S,4R,5S)-5-(4-azanyl-2-oxidanylidene-pyrimidin-1-yl)-3,4-bis(oxidanyl)oxolan-2-yl]methyl hydrogen phosphate (three-letter code: A7R) (formula: C₂₀H₂₈N₅O₁₅P₂).



Mol	Chain	Residues	Atoms					ZeroOcc	AltConf
3	A	1	Total	C	N	O	P	0	0
			42	20	5	15	2		
3	B	1	Total	C	N	O	P	0	0
			42	20	5	15	2		


- Molecule 4 is water.

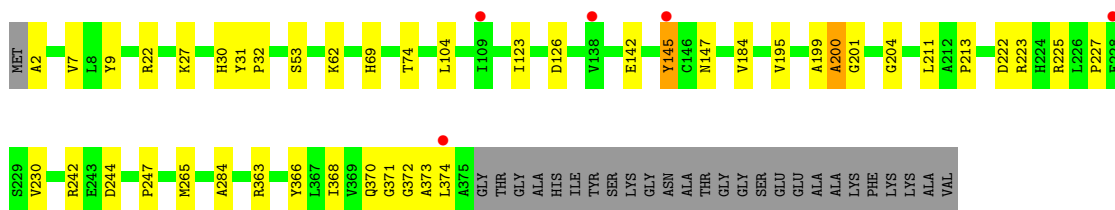
Mol	Chain	Residues	Atoms		ZeroOcc	AltConf
4	A	217	Total 217	O 217	0	0
4	B	184	Total 184	O 184	0	0

3 Residue-property plots [i](#)


These plots are drawn for all protein, RNA, DNA and oligosaccharide chains in the entry. The first graphic for a chain summarises the proportions of the various outlier classes displayed in the second graphic. The second graphic shows the sequence view annotated by issues in geometry and electron density. Residues are color-coded according to the number of geometric quality criteria for which they contain at least one outlier: green = 0, yellow = 1, orange = 2 and red = 3 or more. A red dot above a residue indicates a poor fit to the electron density ($RSRZ > 2$). Stretches of 2 or more consecutive residues without any outlier are shown as a green connector. Residues present in the sample, but not in the model, are shown in grey.

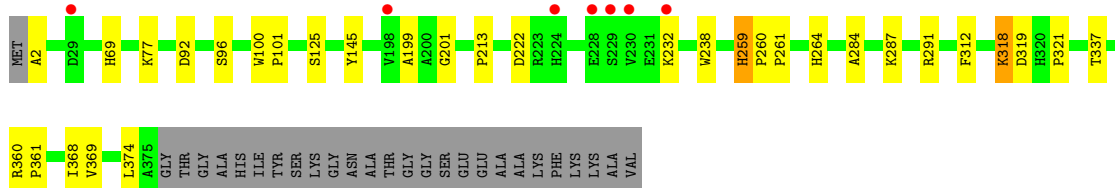
- Molecule 1: Formate dehydrogenase

Chain A: 



- Molecule 1: Formate dehydrogenase

Chain B: 



4 Data and refinement statistics

Property	Value	Source
Space group	P 1 21 1	Depositor
Cell constants a, b, c, α , β , γ	78.04Å 54.18Å 102.83Å 90.00° 99.72° 90.00°	Depositor
Resolution (Å)	39.37 – 2.29 47.78 – 2.29	Depositor EDS
% Data completeness (in resolution range)	96.6 (39.37-2.29) 96.7 (47.78-2.29)	Depositor EDS
R_{merge}	0.20	Depositor
R_{sym}	(Not available)	Depositor
$\langle I/\sigma(I) \rangle$ ¹	3.10 (at 2.29Å)	Xtrriage
Refinement program	PHENIX (1.15.2_3472: ???)	Depositor
R, R_{free}	0.159 , 0.205 0.159 , 0.204	Depositor DCC
R_{free} test set	1800 reflections (4.85%)	wwPDB-VP
Wilson B-factor (Å ²)	29.8	Xtrriage
Anisotropy	0.128	Xtrriage
Bulk solvent k_{sol} (e/Å ³), B_{sol} (Å ²)	0.36 , 43.6	EDS
L-test for twinning ²	$\langle L \rangle = 0.50$, $\langle L^2 \rangle = 0.33$	Xtrriage
Estimated twinning fraction	No twinning to report.	Xtrriage
F_o, F_c correlation	0.96	EDS
Total number of atoms	6361	wwPDB-VP
Average B, all atoms (Å ²)	31.0	wwPDB-VP

Xtrriage's analysis on translational NCS is as follows: *The largest off-origin peak in the Patterson function is 4.58% of the height of the origin peak. No significant pseudotranslation is detected.*

¹Intensities estimated from amplitudes.

²Theoretical values of $\langle |L| \rangle$, $\langle L^2 \rangle$ for acentric reflections are 0.5, 0.333 respectively for untwinned datasets, and 0.375, 0.2 for perfectly twinned datasets.

5 Model quality

5.1 Standard geometry

Bond lengths and bond angles in the following residue types are not validated in this section: GOL, A7R

The Z score for a bond length (or angle) is the number of standard deviations the observed value is removed from the expected value. A bond length (or angle) with $|Z| > 5$ is considered an outlier worth inspection. RMSZ is the root-mean-square of all Z scores of the bond lengths (or angles).

Mol	Chain	Bond lengths		Bond angles	
		RMSZ	# Z >5	RMSZ	# Z >5
1	A	0.38	0/2995	0.57	0/4086
1	B	0.39	0/2995	0.55	0/4086
All	All	0.38	0/5990	0.56	0/8172

There are no bond length outliers.

There are no bond angle outliers.

There are no chirality outliers.

There are no planarity outliers.

5.2 Too-close contacts

In the following table, the Non-H and H(model) columns list the number of non-hydrogen atoms and hydrogen atoms in the chain respectively. The H(added) column lists the number of hydrogen atoms added and optimized by MolProbity. The Clashes column lists the number of clashes within the asymmetric unit, whereas Symm-Clashes lists symmetry-related clashes.

Mol	Chain	Non-H	H(model)	H(added)	Clashes	Symm-Clashes
1	A	2920	0	2880	35	0
1	B	2920	0	2880	22	0
2	A	24	0	31	1	0
2	B	12	0	16	2	0
3	A	42	0	0	6	0
3	B	42	0	0	6	0
4	A	217	0	0	3	0
4	B	184	0	0	2	0
All	All	6361	0	5807	61	0

The all-atom clashscore is defined as the number of clashes found per 1000 atoms (including hydrogen atoms). The all-atom clashscore for this structure is 5.

All (61) close contacts within the same asymmetric unit are listed below, sorted by their clash magnitude.

Atom-1	Atom-2	Interatomic distance (Å)	Clash overlap (Å)
3:B:501:A7R:O01	3:B:501:A7R:C03	1.65	1.23
1:A:62:LYS:NZ	4:A:601:HOH:O	1.72	1.20
3:B:501:A7R:O02	3:B:501:A7R:C07	1.66	1.18
3:A:505:A7R:O01	3:A:505:A7R:C03	1.66	1.15
3:A:505:A7R:C07	3:A:505:A7R:O02	1.66	1.13
3:B:501:A7R:O05	3:B:501:A7R:O08	2.01	0.78
1:A:31:TYR:HB3	1:A:145:TYR:CE2	2.20	0.77
3:A:505:A7R:O08	3:A:505:A7R:O05	2.02	0.76
1:A:199:ALA:N	4:A:602:HOH:O	2.19	0.75
1:B:199:ALA:N	4:B:602:HOH:O	2.20	0.73
1:B:2:ALA:HB1	1:B:69:HIS:ND1	2.16	0.60
1:B:125:SER:HB3	1:B:368:ILE:HD13	1.85	0.58
1:B:222:ASP:OD1	3:B:501:A7R:O04	2.22	0.58
1:B:2:ALA:N	1:B:92:ASP:OD2	2.37	0.57
1:B:284:ALA:HA	3:B:501:A7R:C06	2.37	0.55
1:A:200:ALA:HA	1:A:204:GLY:HA3	1.89	0.55
1:A:30:HIS:NE2	2:A:501:GOL:H12	2.22	0.54
1:A:284:ALA:HA	3:A:505:A7R:C06	2.37	0.54
1:A:372:GLY:O	1:A:374:LEU:N	2.34	0.53
1:B:319:ASP:O	4:B:601:HOH:O	2.18	0.53
1:B:222:ASP:O	1:B:238:TRP:HH2	1.91	0.52
1:A:195:VAL:HG11	1:A:211:LEU:HD13	1.91	0.52
1:A:27:LYS:HD3	1:A:27:LYS:N	2.24	0.52
1:A:227:PRO:O	1:A:230:VAL:N	2.43	0.50
1:A:199:ALA:O	1:A:200:ALA:HB3	2.12	0.49
1:A:32:PRO:HD2	1:A:145:TYR:CZ	2.47	0.49
1:A:31:TYR:HB3	1:A:145:TYR:CZ	2.47	0.49
1:B:259:HIS:NE2	1:B:261:PRO:HG2	2.28	0.49
1:A:142:GLU:HG2	1:A:368:ILE:HD11	1.93	0.49
1:A:32:PRO:HD2	1:A:145:TYR:OH	2.13	0.48
1:B:77:LYS:HD3	1:B:100:TRP:CD1	2.50	0.47
1:A:201:GLY:HA3	3:A:505:A7R:C09	2.44	0.47
1:A:222:ASP:OD1	1:A:223:ARG:N	2.48	0.47
1:A:2:ALA:N	1:A:69:HIS:HD1	2.13	0.47
1:A:31:TYR:CB	1:A:145:TYR:CE2	2.96	0.47
1:B:318:LYS:HE3	1:B:319:ASP:HB3	1.97	0.47
1:A:7:VAL:HA	1:A:74:THR:O	2.14	0.47
1:A:363:ARG:HB2	1:A:366:TYR:CD2	2.51	0.46
1:B:201:GLY:HA3	3:B:501:A7R:C09	2.46	0.45
1:A:244:ASP:O	1:A:247:PRO:HD2	2.16	0.45

Continued on next page...

Continued from previous page...

Atom-1	Atom-2	Interatomic distance (Å)	Clash overlap (Å)
1:A:31:TYR:HB3	1:A:145:TYR:CD2	2.51	0.44
1:A:31:TYR:CB	1:A:145:TYR:CD2	2.99	0.44
1:A:213:PRO:HG3	1:B:213:PRO:HG3	1.99	0.44
1:B:369:VAL:HG22	1:B:374:LEU:HD23	1.99	0.43
1:A:104:LEU:HD23	1:A:104:LEU:HA	1.87	0.43
1:A:123:ILE:HD12	1:A:147:ASN:OD1	2.18	0.43
1:B:291:ARG:HD3	1:B:321:PRO:CG	2.49	0.43
1:B:96:SER:OG	1:B:101:PRO:HA	2.18	0.43
1:B:360:ARG:HB3	2:B:502:GOL:H12	2.01	0.43
1:B:287:LYS:HE2	1:B:312:PHE:CE2	2.54	0.42
1:A:222:ASP:OD1	3:A:505:A7R:O04	2.38	0.42
1:A:184:VAL:HG11	1:B:337:THR:HG23	2.01	0.42
1:A:199:ALA:O	1:A:222:ASP:HB2	2.20	0.42
1:A:242:ARG:HD2	1:A:265:MET:HE3	2.02	0.41
1:A:22:ARG:NH1	4:A:603:HOH:O	2.21	0.41
1:A:370:GLN:O	1:A:374:LEU:HD12	2.20	0.41
1:A:145:TYR:HD1	1:A:145:TYR:O	2.03	0.41
1:A:9:TYR:O	1:A:53:SER:HA	2.21	0.41
1:B:232:LYS:HD2	1:B:232:LYS:N	2.34	0.41
1:B:259:HIS:HB2	1:B:260:PRO:HD2	2.02	0.41
1:B:361:PRO:O	2:B:502:GOL:H31	2.20	0.41

There are no symmetry-related clashes.

5.3 Torsion angles [i](#)

5.3.1 Protein backbone [i](#)

In the following table, the Percentiles column shows the percent Ramachandran outliers of the chain as a percentile score with respect to all X-ray entries followed by that with respect to entries of similar resolution.

The Analysed column shows the number of residues for which the backbone conformation was analysed, and the total number of residues.

Mol	Chain	Analysed	Favoured	Allowed	Outliers	Percentiles	
1	A	372/401 (93%)	358 (96%)	11 (3%)	3 (1%)	19	23
1	B	372/401 (93%)	360 (97%)	12 (3%)	0	100	100
All	All	744/802 (93%)	718 (96%)	23 (3%)	3 (0%)	34	42

All (3) Ramachandran outliers are listed below:

Mol	Chain	Res	Type
1	A	373	ALA
1	A	200	ALA
1	A	371	GLY

5.3.2 Protein sidechains [i](#)

In the following table, the Percentiles column shows the percent sidechain outliers of the chain as a percentile score with respect to all X-ray entries followed by that with respect to entries of similar resolution.

The Analysed column shows the number of residues for which the sidechain conformation was analysed, and the total number of residues.

Mol	Chain	Analysed	Rotameric	Outliers	Percentiles	
1	A	312/329 (95%)	309 (99%)	3 (1%)	76	87
1	B	312/329 (95%)	308 (99%)	4 (1%)	69	82
All	All	624/658 (95%)	617 (99%)	7 (1%)	73	86

All (7) residues with a non-rotameric sidechain are listed below:

Mol	Chain	Res	Type
1	A	126	ASP
1	A	145	TYR
1	A	225	ARG
1	B	145	TYR
1	B	259	HIS
1	B	264	HIS
1	B	318	LYS

Sometimes sidechains can be flipped to improve hydrogen bonding and reduce clashes. There are no such sidechains identified.

5.3.3 RNA [i](#)

There are no RNA molecules in this entry.

5.4 Non-standard residues in protein, DNA, RNA chains [i](#)

There are no non-standard protein/DNA/RNA residues in this entry.

5.5 Carbohydrates [i](#)

There are no monosaccharides in this entry.

5.6 Ligand geometry [i](#)

8 ligands are modelled in this entry.

In the following table, the Counts columns list the number of bonds (or angles) for which Mogul statistics could be retrieved, the number of bonds (or angles) that are observed in the model and the number of bonds (or angles) that are defined in the Chemical Component Dictionary. The Link column lists molecule types, if any, to which the group is linked. The Z score for a bond length (or angle) is the number of standard deviations the observed value is removed from the expected value. A bond length (or angle) with $|Z| > 2$ is considered an outlier worth inspection. RMSZ is the root-mean-square of all Z scores of the bond lengths (or angles).

Mol	Type	Chain	Res	Link	Bond lengths			Bond angles		
					Counts	RMSZ	# Z > 2	Counts	RMSZ	# Z > 2
2	GOL	A	503	-	5,5,5	1.24	1 (20%)	5,5,5	0.93	0
2	GOL	A	502	-	5,5,5	1.13	0	5,5,5	1.03	0
2	GOL	B	502	-	5,5,5	0.78	0	5,5,5	0.97	0
2	GOL	B	503	-	5,5,5	0.96	0	5,5,5	0.88	0
3	A7R	A	505	-	42,45,45	4.24	22 (52%)	58,68,68	2.06	15 (25%)
2	GOL	A	504	-	5,5,5	1.12	0	5,5,5	1.01	0
3	A7R	B	501	-	42,45,45	4.22	22 (52%)	58,68,68	1.95	13 (22%)
2	GOL	A	501	-	5,5,5	0.85	0	5,5,5	0.87	0

In the following table, the Chirals column lists the number of chiral outliers, the number of chiral centers analysed, the number of these observed in the model and the number defined in the Chemical Component Dictionary. Similar counts are reported in the Torsion and Rings columns. '2' means no outliers of that kind were identified.

Mol	Type	Chain	Res	Link	Chirals	Torsions	Rings
2	GOL	A	503	-	-	0/4/4/4	-
2	GOL	A	502	-	-	3/4/4/4	-
2	GOL	B	502	-	-	2/4/4/4	-
2	GOL	B	503	-	-	2/4/4/4	-
3	A7R	A	505	-	-	10/30/62/62	0/4/4/4
2	GOL	A	504	-	-	2/4/4/4	-
3	A7R	B	501	-	-	10/30/62/62	0/4/4/4
2	GOL	A	501	-	-	2/4/4/4	-

All (45) bond length outliers are listed below:

Mol	Chain	Res	Type	Atoms	Z	Observed(Å)	Ideal(Å)
3	B	501	A7R	C05-C07	-10.04	1.27	1.53
3	B	501	A7R	O02-C07	9.71	1.66	1.45
3	A	505	A7R	O01-C03	9.67	1.66	1.45
3	A	505	A7R	C05-C07	-9.52	1.28	1.53
3	A	505	A7R	O02-C07	9.49	1.66	1.45
3	B	501	A7R	C01-C03	-9.31	1.29	1.53
3	B	501	A7R	O01-C03	9.02	1.65	1.45
3	A	505	A7R	C01-C03	-8.99	1.30	1.53
3	A	505	A7R	C18-N05	7.05	1.50	1.36
3	B	501	A7R	O02-C08	-6.58	1.31	1.41
3	B	501	A7R	C18-N05	6.57	1.49	1.36
3	A	505	A7R	O02-C08	-6.26	1.32	1.41
3	B	501	A7R	C20-N04	6.25	1.48	1.33
3	A	505	A7R	C20-N04	6.05	1.48	1.33
3	A	505	A7R	C17-C19	5.98	1.49	1.35
3	A	505	A7R	C20-N05	5.98	1.46	1.34
3	B	501	A7R	C17-C19	5.91	1.48	1.35
3	A	505	A7R	C16-N02	5.88	1.44	1.33
3	B	501	A7R	C16-N02	5.64	1.43	1.33
3	B	501	A7R	C20-N05	5.52	1.45	1.34
3	A	505	A7R	C18-N03	5.29	1.51	1.40
3	B	501	A7R	C18-N03	4.86	1.50	1.40
3	B	501	A7R	O06-C06	-4.67	1.32	1.43
3	B	501	A7R	O01-C04	-4.53	1.31	1.42
3	A	505	A7R	O06-C06	-4.43	1.32	1.43
3	A	505	A7R	O01-C04	-4.32	1.31	1.42
3	B	501	A7R	O04-C02	-4.07	1.33	1.43
3	A	505	A7R	O04-C02	-3.80	1.34	1.43
3	A	505	A7R	O05-C05	3.34	1.50	1.43
3	A	505	A7R	C17-N03	3.33	1.46	1.38
3	B	501	A7R	O05-C05	3.19	1.50	1.43
3	A	505	A7R	O03-C01	3.14	1.50	1.43
3	B	501	A7R	C17-N03	3.11	1.45	1.38
3	B	501	A7R	O15-C18	-2.99	1.18	1.23
3	A	505	A7R	O15-C18	-2.98	1.18	1.23
3	B	501	A7R	C19-C20	2.91	1.49	1.42
3	A	505	A7R	C19-C20	2.78	1.49	1.42
3	B	501	A7R	O03-C01	2.57	1.49	1.43
3	B	501	A7R	O14-C16	-2.53	1.19	1.24
3	A	505	A7R	O14-C16	-2.38	1.19	1.24
3	A	505	A7R	C13-C16	2.35	1.54	1.50
3	B	501	A7R	C13-C16	2.28	1.54	1.50

Continued on next page...

Continued from previous page...

Mol	Chain	Res	Type	Atoms	Z	Observed(Å)	Ideal(Å)
3	B	501	A7R	P02-O08	2.22	1.68	1.59
2	A	503	GOL	O2-C2	-2.20	1.36	1.43
3	A	505	A7R	C02-C01	2.04	1.58	1.53

All (28) bond angle outliers are listed below:

Mol	Chain	Res	Type	Atoms	Z	Observed(°)	Ideal(°)
3	B	501	A7R	C03-O01-C04	-8.25	91.26	109.47
3	A	505	A7R	C03-O01-C04	-7.76	92.34	109.47
3	A	505	A7R	O01-C04-N03	5.48	120.90	108.36
3	B	501	A7R	C11-N01-C08	-4.99	108.03	119.14
3	A	505	A7R	C11-N01-C08	-4.81	108.43	119.14
3	B	501	A7R	O01-C04-N03	4.69	119.07	108.36
3	A	505	A7R	C04-N03-C18	4.61	128.72	118.42
3	A	505	A7R	C04-N03-C17	-4.20	111.67	120.84
3	B	501	A7R	C04-N03-C18	3.60	126.45	118.42
3	A	505	A7R	C05-C06-C08	3.45	106.17	100.98
3	B	501	A7R	C04-N03-C17	-3.44	113.34	120.84
3	B	501	A7R	C05-C06-C08	3.37	106.05	100.98
3	A	505	A7R	P02-O09-P01	-2.79	123.25	132.83
3	A	505	A7R	O07-P01-O10	2.67	119.51	109.07
3	A	505	A7R	C02-C04-N03	2.60	120.57	113.22
3	B	501	A7R	C12-N01-C11	-2.51	119.69	121.97
3	A	505	A7R	O05-C05-C06	-2.49	103.78	111.82
3	B	501	A7R	O05-C05-C06	-2.38	104.13	111.82
3	B	501	A7R	O08-C10-C07	2.37	117.16	108.99
3	B	501	A7R	O15-C18-N05	-2.28	118.62	122.33
3	A	505	A7R	C12-N01-C11	-2.27	119.90	121.97
3	B	501	A7R	O07-P01-O10	2.22	117.74	109.07
3	A	505	A7R	O01-C03-C09	2.22	116.66	109.37
3	A	505	A7R	N04-C20-N05	2.21	121.84	117.97
3	B	501	A7R	C02-C04-N03	2.09	119.14	113.22
3	A	505	A7R	O15-C18-N05	-2.09	118.93	122.33
3	B	501	A7R	O15-C18-N03	2.06	123.14	118.89
3	A	505	A7R	O15-C18-N03	2.01	123.05	118.89

There are no chirality outliers.

All (31) torsion outliers are listed below:

Mol	Chain	Res	Type	Atoms
2	A	501	GOL	C1-C2-C3-O3
2	A	504	GOL	O1-C1-C2-C3

Continued on next page...

Continued from previous page...

Mol	Chain	Res	Type	Atoms
2	B	502	GOL	C1-C2-C3-O3
3	A	505	A7R	C01-C03-C09-O07
3	A	505	A7R	O02-C07-C10-O08
3	B	501	A7R	C01-C03-C09-O07
3	B	501	A7R	O02-C07-C10-O08
3	B	501	A7R	C09-O07-P01-O09
3	B	501	A7R	C09-O07-P01-O11
3	B	501	A7R	C05-C07-C10-O08
2	A	502	GOL	O2-C2-C3-O3
2	B	502	GOL	O2-C2-C3-O3
3	A	505	A7R	C05-C07-C10-O08
2	A	502	GOL	C1-C2-C3-O3
2	A	501	GOL	O2-C2-C3-O3
2	A	504	GOL	O1-C1-C2-O2
3	A	505	A7R	O01-C03-C09-O07
3	B	501	A7R	O01-C03-C09-O07
2	B	503	GOL	O2-C2-C3-O3
3	A	505	A7R	C10-O08-P02-O09
3	B	501	A7R	C10-O08-P02-O09
2	B	503	GOL	C1-C2-C3-O3
3	A	505	A7R	C09-O07-P01-O11
3	A	505	A7R	O01-C04-N03-C17
3	A	505	A7R	C03-C09-O07-P01
3	B	501	A7R	O01-C04-N03-C17
3	A	505	A7R	O01-C04-N03-C18
3	B	501	A7R	O01-C04-N03-C18
3	B	501	A7R	C03-C09-O07-P01
3	A	505	A7R	C09-O07-P01-O09
2	A	502	GOL	O1-C1-C2-C3

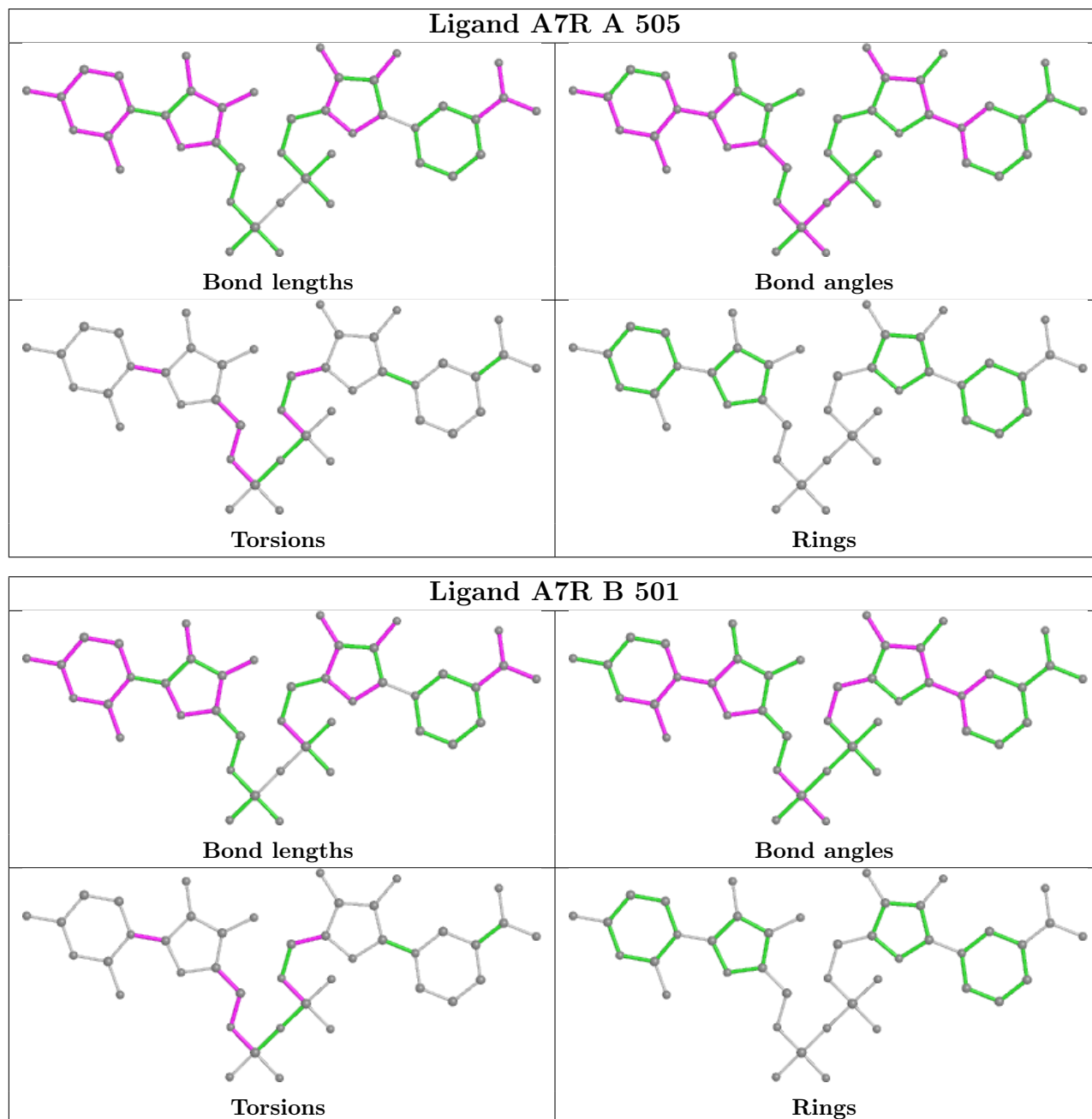
There are no ring outliers.

4 monomers are involved in 15 short contacts:

Mol	Chain	Res	Type	Clashes	Symm-Clashes
2	B	502	GOL	2	0
3	A	505	A7R	6	0
3	B	501	A7R	6	0
2	A	501	GOL	1	0

The following is a two-dimensional graphical depiction of Mogul quality analysis of bond lengths, bond angles, torsion angles, and ring geometry for all instances of the Ligand of Interest. In addition, ligands with molecular weight > 250 and outliers as shown on the validation Tables will

also be included. For torsion angles, if less than 5% of the Mogul distribution of torsion angles is within 10 degrees of the torsion angle in question, then that torsion angle is considered an outlier. Any bond that is central to one or more torsion angles identified as an outlier by Mogul will be highlighted in the graph. For rings, the root-mean-square deviation (RMSD) between the ring in question and similar rings identified by Mogul is calculated over all ring torsion angles. If the average RMSD is greater than 60 degrees and the minimal RMSD between the ring in question and any Mogul-identified rings is also greater than 60 degrees, then that ring is considered an outlier. The outliers are highlighted in purple. The color gray indicates Mogul did not find sufficient equivalents in the CSD to analyse the geometry.



5.7 Other polymers [i](#)

There are no such residues in this entry.

5.8 Polymer linkage issues [i](#)

There are no chain breaks in this entry.

6 Fit of model and data [i](#)

6.1 Protein, DNA and RNA chains [i](#)

In the following table, the column labelled ‘#RSRZ > 2’ contains the number (and percentage) of RSRZ outliers, followed by percent RSRZ outliers for the chain as percentile scores relative to all X-ray entries and entries of similar resolution. The OWAB column contains the minimum, median, 95th percentile and maximum values of the occupancy-weighted average B-factor per residue. The column labelled ‘Q < 0.9’ lists the number of (and percentage) of residues with an average occupancy less than 0.9.

Mol	Chain	Analysed	<RSRZ>	#RSRZ>2	OWAB(Å ²)	Q<0.9
1	A	374/401 (93%)	-0.18	5 (1%) 77 81	20, 29, 44, 63	0
1	B	374/401 (93%)	-0.26	7 (1%) 66 73	19, 29, 44, 61	0
All	All	748/802 (93%)	-0.22	12 (1%) 72 77	19, 29, 44, 63	0

All (12) RSRZ outliers are listed below:

Mol	Chain	Res	Type	RSRZ
1	A	374	LEU	3.5
1	B	229	SER	3.0
1	A	138	VAL	2.8
1	B	228	GLU	2.7
1	B	230	VAL	2.7
1	B	198	VAL	2.7
1	A	228	GLU	2.7
1	A	145	TYR	2.4
1	A	109	ILE	2.4
1	B	232	LYS	2.2
1	B	29	ASP	2.1
1	B	224	HIS	2.1

6.2 Non-standard residues in protein, DNA, RNA chains [i](#)

There are no non-standard protein/DNA/RNA residues in this entry.

6.3 Carbohydrates [i](#)

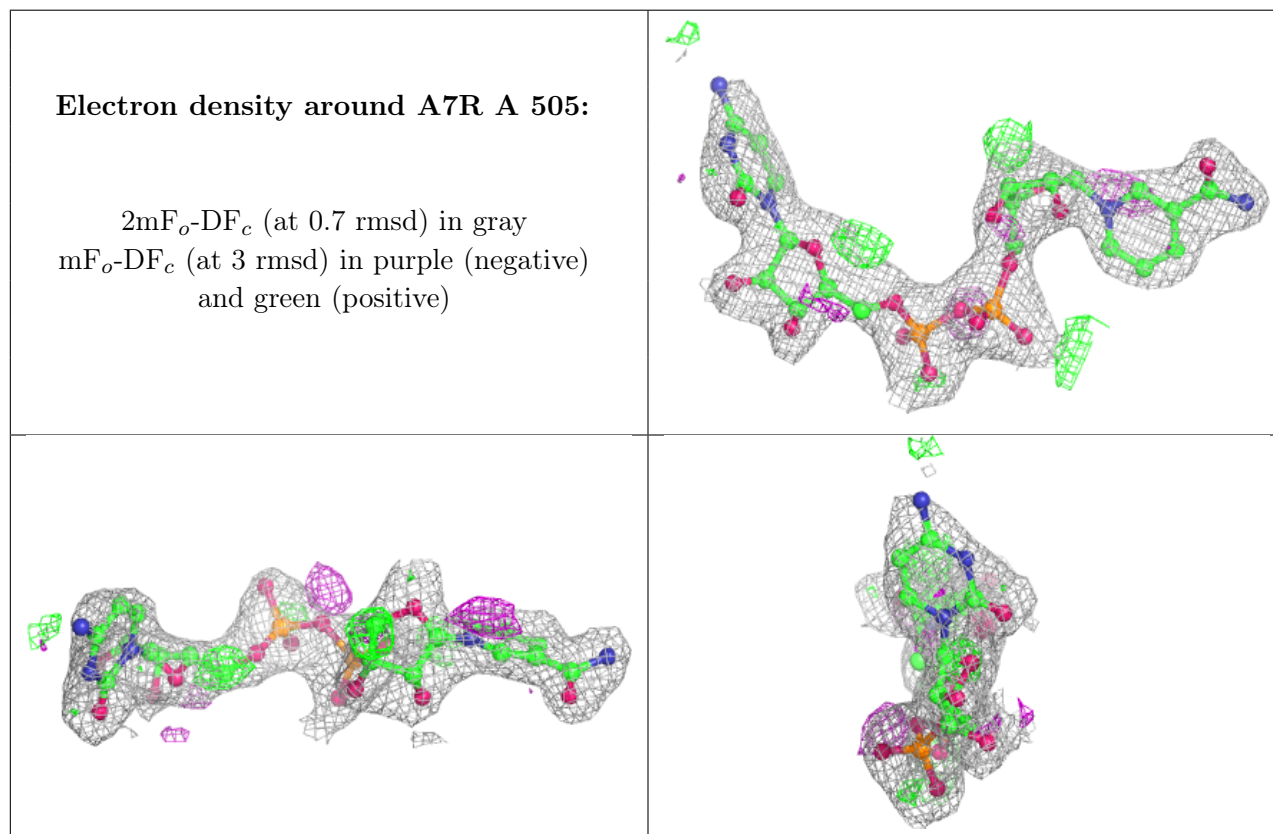
There are no monosaccharides in this entry.

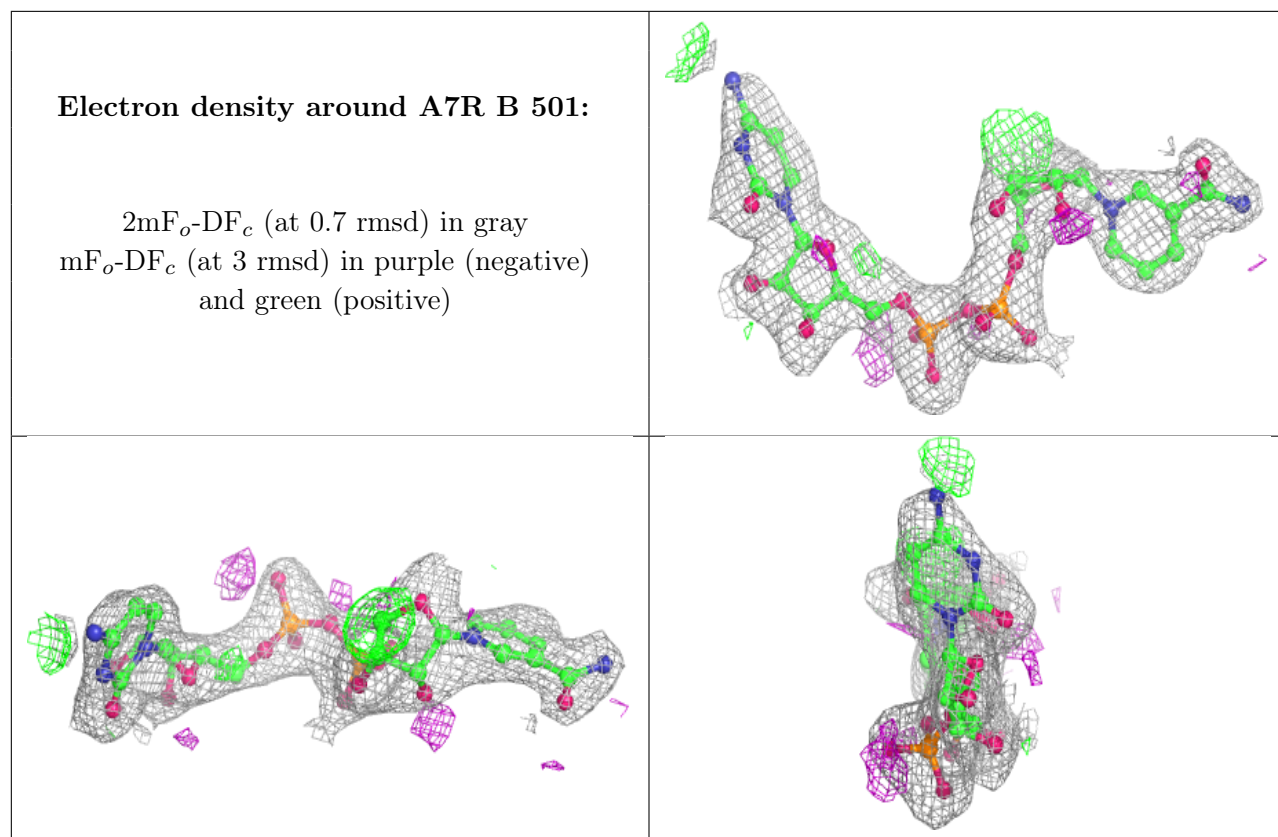
6.4 Ligands [i](#)

In the following table, the Atoms column lists the number of modelled atoms in the group and the number defined in the chemical component dictionary. The B-factors column lists the minimum, median, 95th percentile and maximum values of B factors of atoms in the group. The column labelled 'Q< 0.9' lists the number of atoms with occupancy less than 0.9.

Mol	Type	Chain	Res	Atoms	RSCC	RSR	B-factors(Å ²)	Q<0.9
2	GOL	A	501	6/6	0.76	0.23	40,55,61,70	0
2	GOL	A	502	6/6	0.85	0.27	29,41,44,54	0
2	GOL	B	502	6/6	0.88	0.18	36,39,45,53	0
2	GOL	B	503	6/6	0.91	0.14	48,53,57,60	0
2	GOL	A	504	6/6	0.93	0.19	33,36,40,40	0
3	A7R	A	505	42/42	0.93	0.18	30,39,48,52	0
3	A7R	B	501	42/42	0.94	0.16	29,39,45,55	0
2	GOL	A	503	6/6	0.95	0.10	31,33,37,39	0

The following is a graphical depiction of the model fit to experimental electron density of all instances of the Ligand of Interest. In addition, ligands with molecular weight > 250 and outliers as shown on the geometry validation Tables will also be included. Each fit is shown from different orientation to approximate a three-dimensional view.





6.5 Other polymers [i](#)

There are no such residues in this entry.