



wwPDB EM Validation Summary Report ⓘ

Feb 25, 2024 – 08:17 AM EST

PDB ID : 7JMG
EMDB ID : EMD-22393
Title : Functional Pathways of Biomolecules Retrieved from Single-particle Snapshots
- Frame 22 - State 2 (S2)
Authors : Dashti, A.; des Georges, A.; Frank, J.; Ourmazd, A.
Deposited on : 2020-07-31
Resolution : 4.50 Å(reported)
Based on initial model : 5TB4

This is a wwPDB EM Validation Summary Report for a publicly released PDB entry.

We welcome your comments at validation@mail.wwpdb.org

A user guide is available at

<https://www.wwpdb.org/validation/2017/EMValidationReportHelp>

with specific help available everywhere you see the ⓘ symbol.

The types of validation reports are described at

<http://www.wwpdb.org/validation/2017/FAQs#types>.

The following versions of software and data (see [references ⓘ](#)) were used in the production of this report:

EMDB validation analysis : 0.0.1.dev70
MolProbity : 4.02b-467
Percentile statistics : 20191225.v01 (using entries in the PDB archive December 25th 2019)
MapQ : 1.9.13
Ideal geometry (proteins) : Engh & Huber (2001)
Ideal geometry (DNA, RNA) : Parkinson et al. (1996)
Validation Pipeline (wwPDB-VP) : 2.36

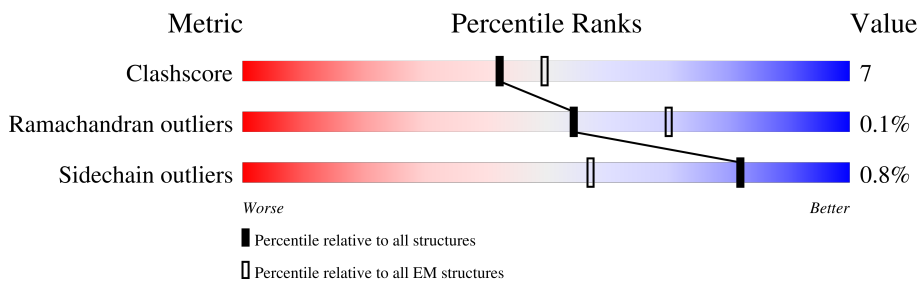
1 Overall quality at a glance

The following experimental techniques were used to determine the structure:

ELECTRON MICROSCOPY

The reported resolution of this entry is 4.50 Å.

Percentile scores (ranging between 0-100) for global validation metrics of the entry are shown in the following graphic. The table shows the number of entries on which the scores are based.



Metric	Whole archive (#Entries)	EM structures (#Entries)
Clashscore	158937	4297
Ramachandran outliers	154571	4023
Sidechain outliers	154315	3826

The table below summarises the geometric issues observed across the polymeric chains and their fit to the map. The red, orange, yellow and green segments of the bar indicate the fraction of residues that contain outliers for ≥ 3 , 2, 1 and 0 types of geometric quality criteria respectively. A grey segment represents the fraction of residues that are not modelled. The numeric value for each fraction is indicated below the corresponding segment, with a dot representing fractions $\leq 5\%$. The upper red bar (where present) indicates the fraction of residues that have poor fit to the EM map (all-atom inclusion $< 40\%$). The numeric value is given above the bar.

Mol	Chain	Length	Quality of chain
1	B	4687	
1	E	4687	
1	G	4687	
1	I	4687	
2	A	107	
2	F	107	
2	H	107	
2	J	107	

2 Entry composition i

There are 4 unique types of molecules in this entry. The entry contains 120756 atoms, of which 0 are hydrogens and 0 are deuteriums.

In the tables below, the AltConf column contains the number of residues with at least one atom in alternate conformation and the Trace column contains the number of residues modelled with at most 2 atoms.

- Molecule 1 is a protein called ryanodine receptor type 1.

Mol	Chain	Residues	Atoms					AltConf	Trace
			Total	C	N	O	S		
1	B	4168	29369	18608	5202	5402	157	0	0
1	E	4168	29369	18608	5202	5402	157	0	0
1	I	4168	29369	18608	5202	5402	157	0	0
1	G	4168	29369	18608	5202	5402	157	0	0

- Molecule 2 is a protein called Peptidyl-prolyl cis-trans isomerase FKBP1B.

Mol	Chain	Residues	Atoms					AltConf	Trace
			Total	C	N	O	S		
2	F	107	818	516	144	154	4	0	0
2	A	107	818	516	144	154	4	0	0
2	H	107	818	516	144	154	4	0	0
2	J	107	818	516	144	154	4	0	0

- Molecule 3 is ZINC ION (three-letter code: ZN) (formula: Zn).

Mol	Chain	Residues	Atoms		AltConf
3	B	1	Total	Zn	0
			1	1	
3	E	1	Total	Zn	0
			1	1	
3	I	1	Total	Zn	0
			1	1	
3	G	1	Total	Zn	0
			1	1	

- Molecule 4 is CALCIUM ION (three-letter code: CA) (formula: Ca) (labeled as "Ligand of

Interest" by depositor).

Mol	Chain	Residues	Atoms		AltConf
4	B	1	Total 1	Ca 1	0
4	E	1	Total 1	Ca 1	0
4	I	1	Total 1	Ca 1	0
4	G	1	Total 1	Ca 1	0

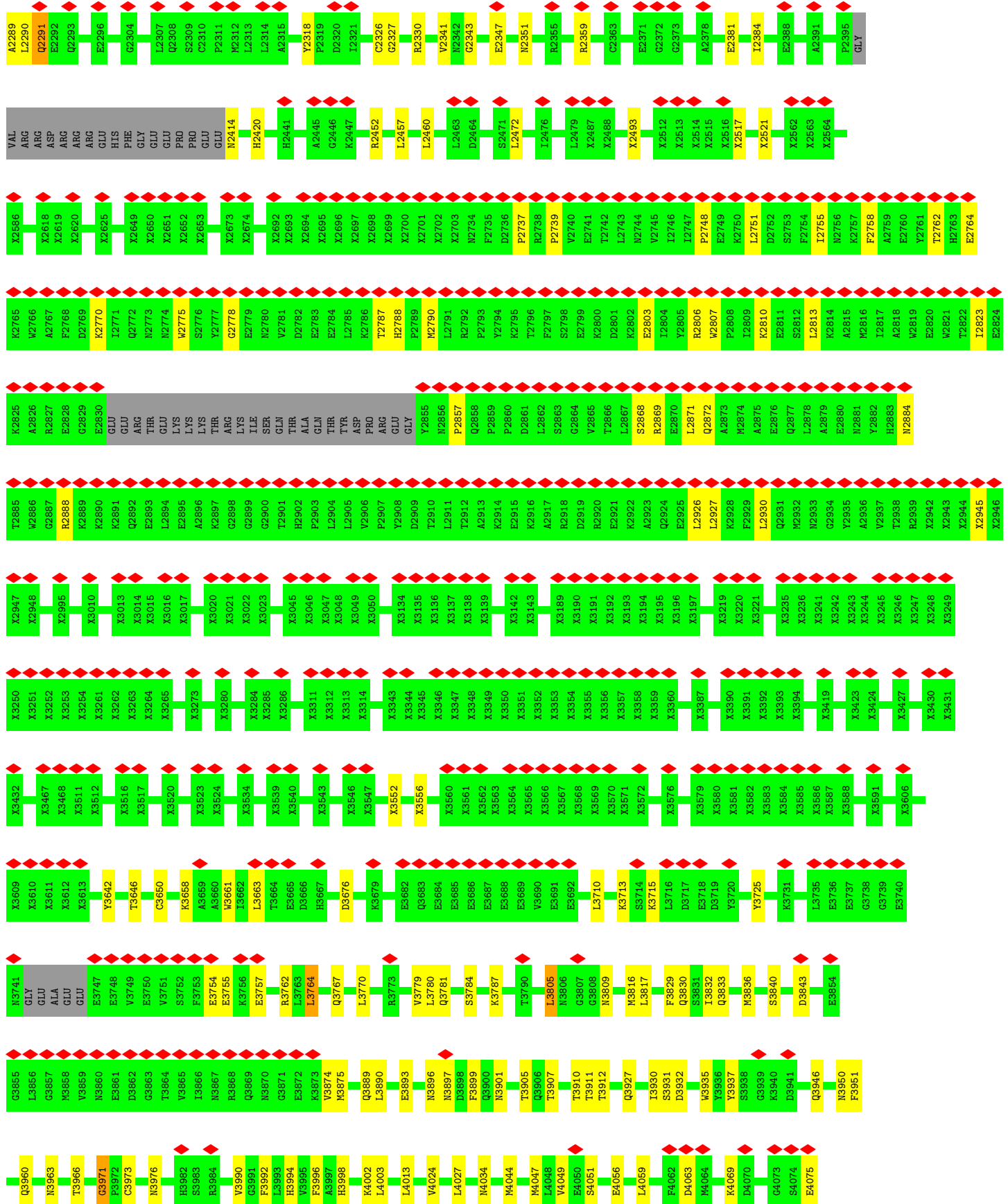
3 Residue-property plots [i](#)

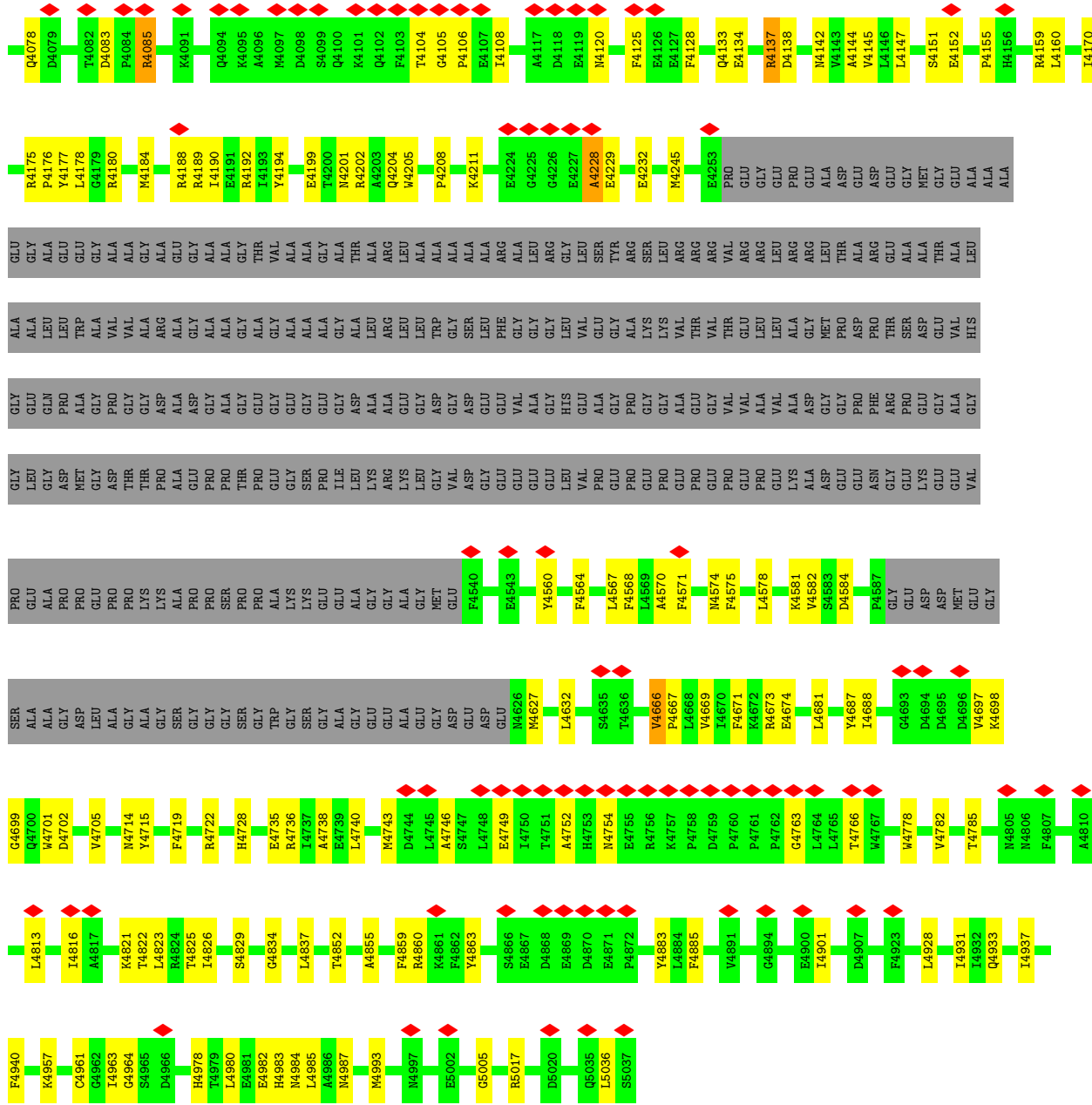
These plots are drawn for all protein, RNA, DNA and oligosaccharide chains in the entry. The first graphic for a chain summarises the proportions of the various outlier classes displayed in the second graphic. The second graphic shows the sequence view annotated by issues in geometry and atom inclusion in map density. Residues are color-coded according to the number of geometric quality criteria for which they contain at least one outlier: green = 0, yellow = 1, orange = 2 and red = 3 or more. A red diamond above a residue indicates a poor fit to the EM map for this residue (all-atom inclusion < 40%). Stretches of 2 or more consecutive residues without any outlier are shown as a green connector. Residues present in the sample, but not in the model, are shown in grey.

- Molecule 1: ryanodine receptor type 1

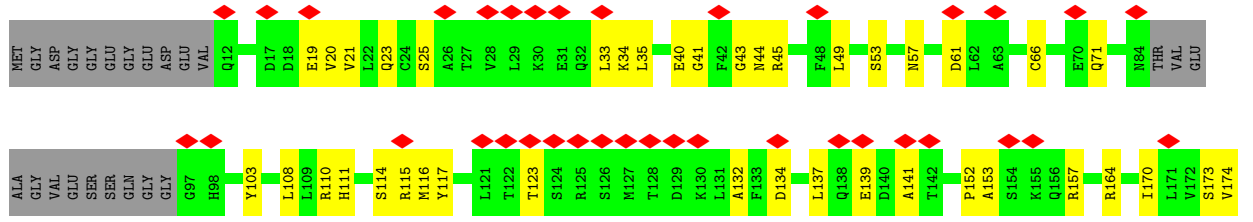
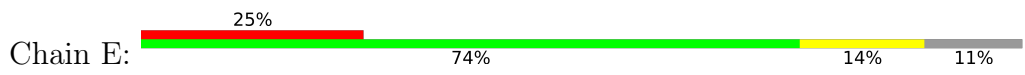


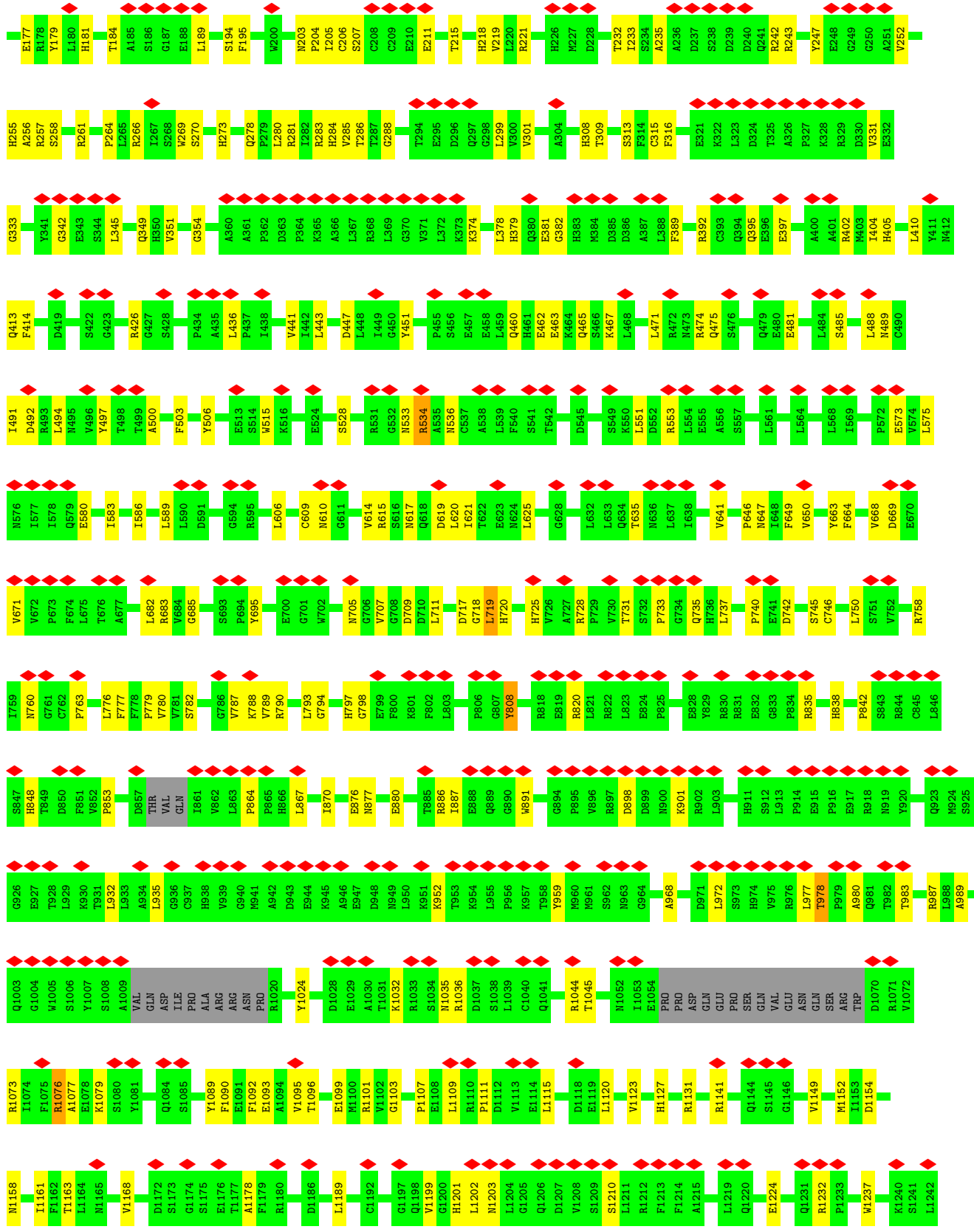


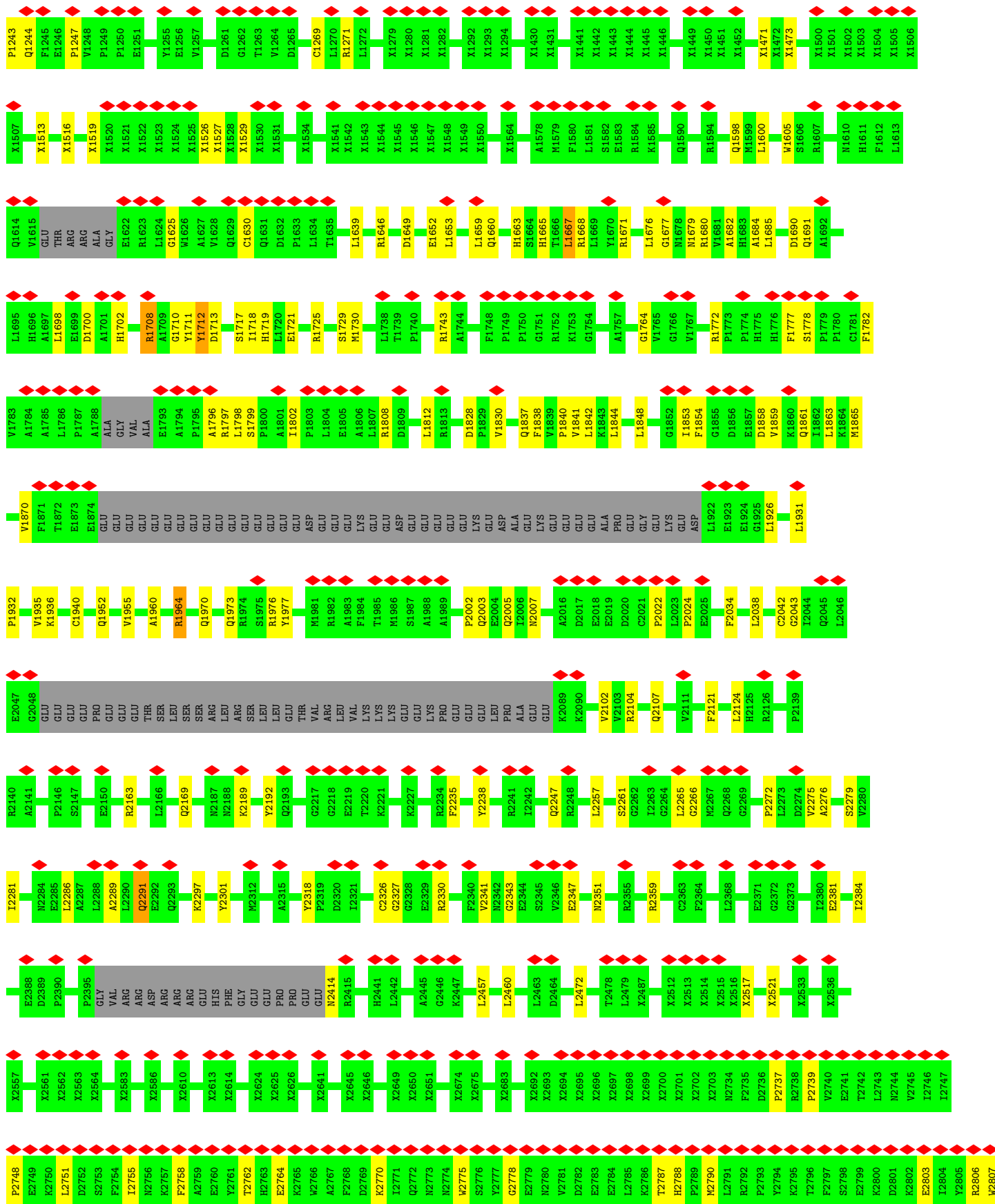




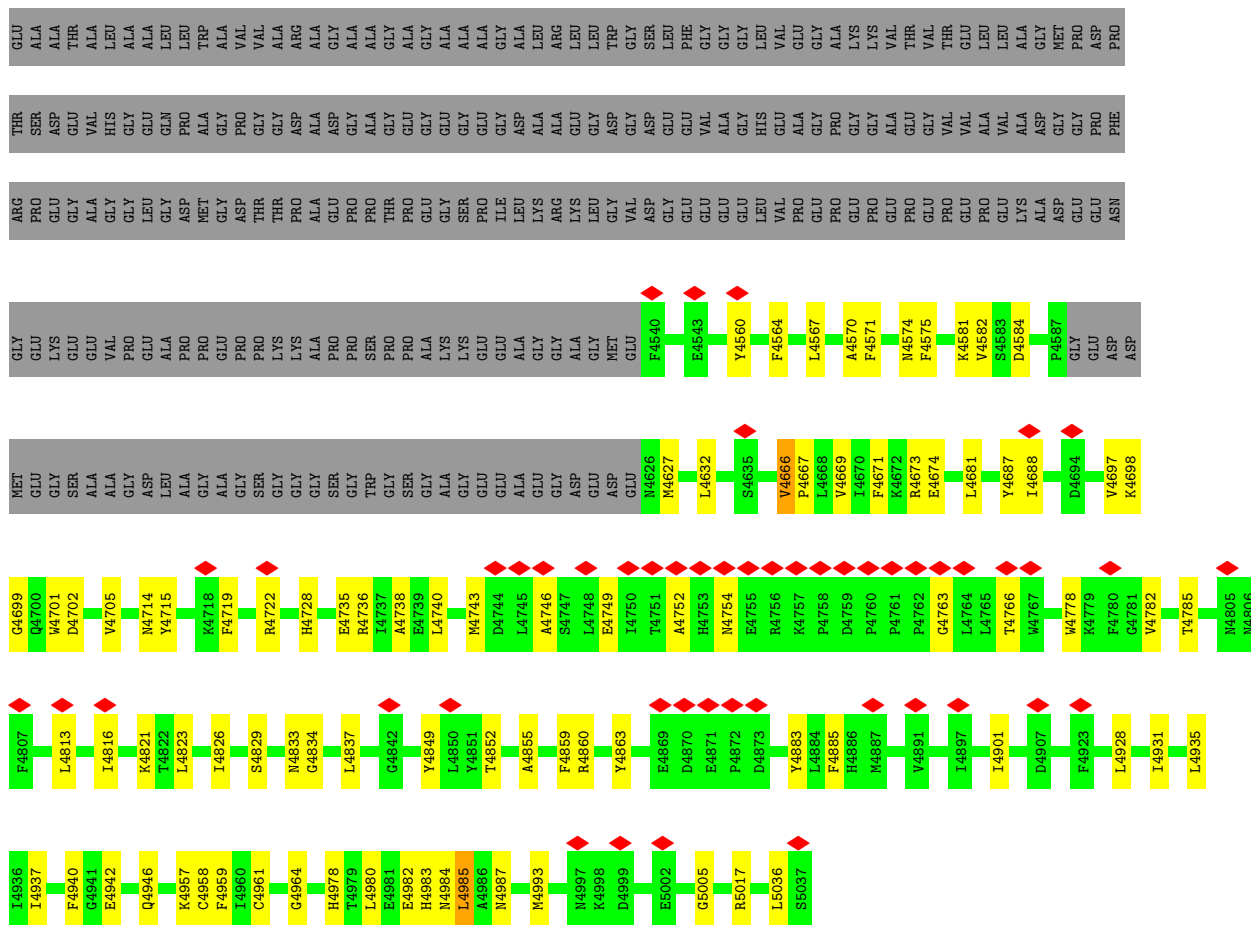
● Molecule 1: ryanodine receptor type 1



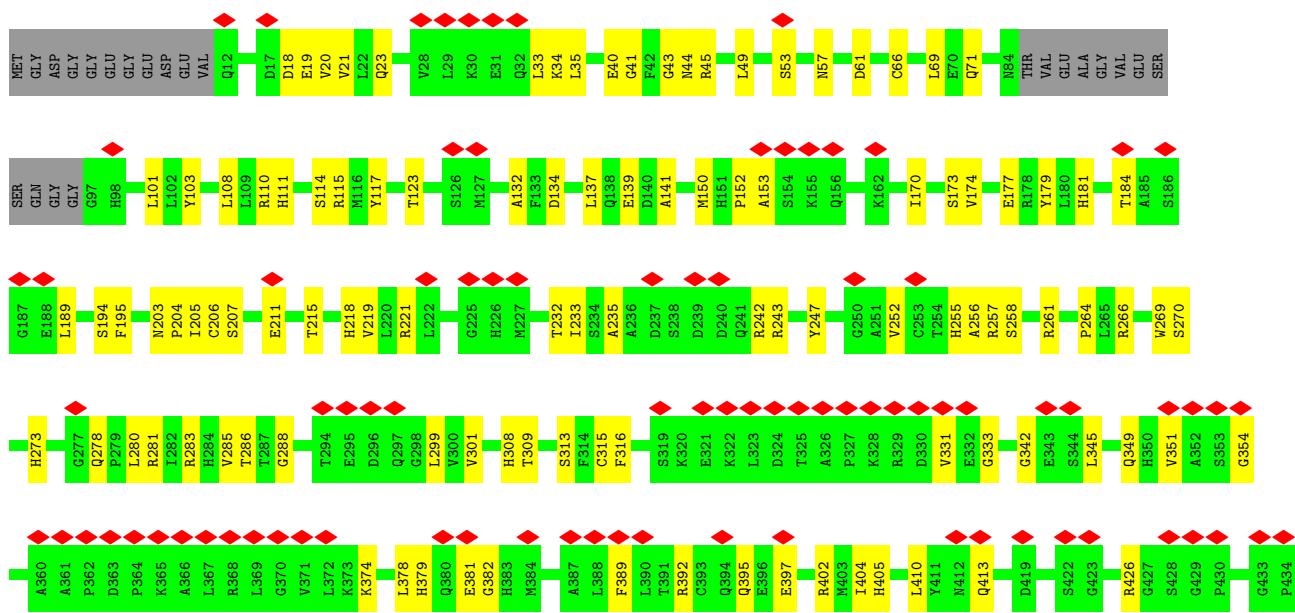
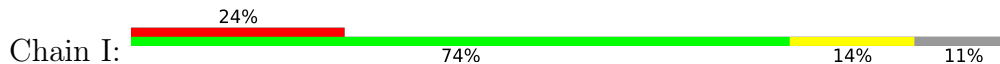


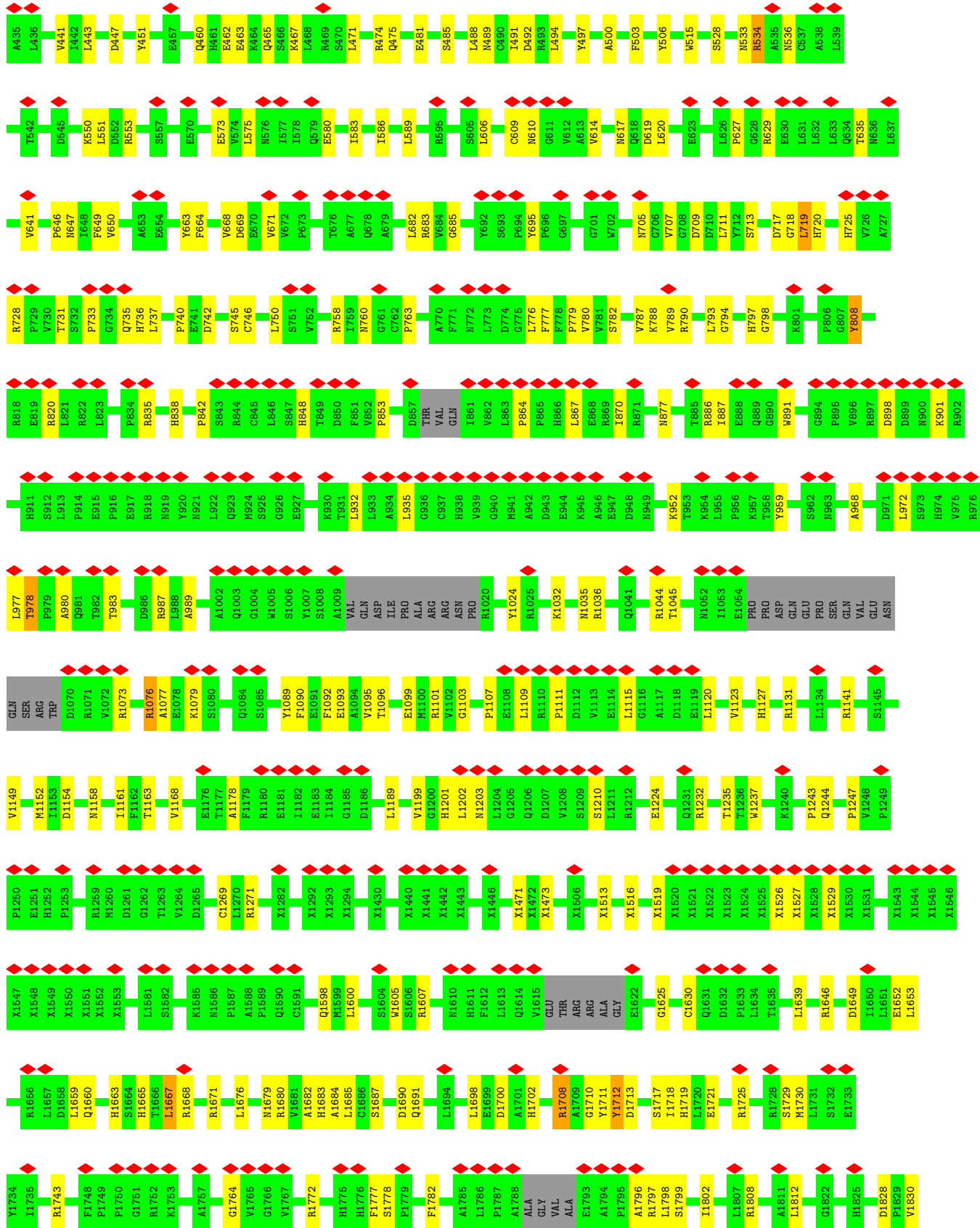


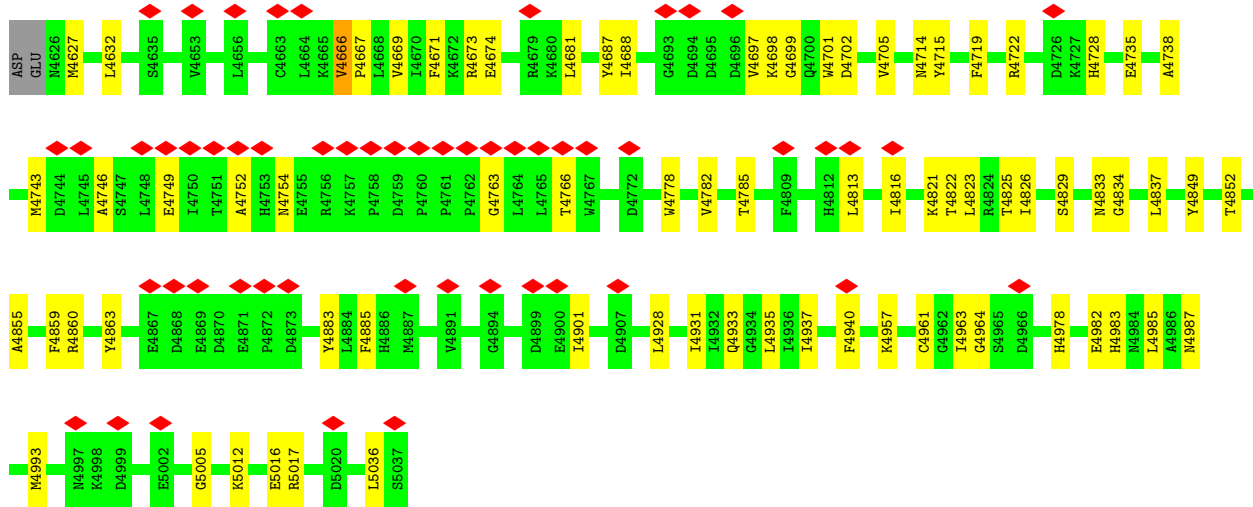
MET	R4159	R4170	R4175	P4176	Y4177	L4178	G4179	R4180	I4183	M4184	R4189	A4190	E4191	A4192	I4193	Y4194	E4199	T4200	M4201	R4202	A4203	Q4204	M4205	E4206	M4207	P4208	K4211	E4224	G4225	G4226	E4227	A4228	E4229	E4232	M4245	E4253	PRO	GLU	GLY	GLU	PRO	ASP	GLU	ALA	GLU	ASP	GLU	GLY	F2808	L2809	K2810	E2811	S2812	L2813	K2814	A2815	H2816	L2817	A2818	W2819	E2820	W2821	T2822	L2823	E2824	K2825	A2826	R2827	E2828	G2829	E2830	GLU	GLU	ARG	THR	GLU	LYS	LYS	X3015	THR	ARG	LYS	ILE	SER	GLN	THR	ALA	GLN	THR	TYR	ASP	PRO	ARG	GLU	GLY	V2855	P2857	P2857	Q2858	P2859	P2860	L2862	S2863	G2864	V2865	T2866	L2867	S2868	R2869	E2870	L2871	Q2872	A2873	M2874	A2875	E2876	Q2877	L2878	A2879	E2880	N2881	Y2882	H2883	N2884	W2886	G2887	R2888	K2889	K2890	K2891	Q2892	E2893	L2894	E2895	A2896	K2897	G2898	G2899	G2900	T2901	H2902	P2903	L2904	L2905	V2906	P2907	Y2908	D2909	T2910	L2911	T2912	A2913	K2914	E2915	K2916	A2917	R2918	D2919	R2920	E2921	K2922	Q2924	L2926	L2927	K2928	F2929	L2930	Q2931	M2932	N2933	G2934	Y2935	A2936	V2937	L2938	R2939	X2942	X2943	X2944	X2945	X2946	X2947	X2948	X2949	X2971	X2975	X2976	X2995	X3013	X3014	X3015	X3016	X3017	X3021	X3022	X3023	X3045	X3046	X3047	X3048	X3049	X3050	X3053	X3134	X3135	X3136	X3137	X3138	X3139	X3161	X3162	X3163	X3189	X3190	X3191	X3192	X3193	X3194	X3195	X3196	X3197	X3216	X3217	X3218	X3219	X3220	X3235	X3236	X3241	X3242	X3243	X3244	X3245	X3246	X3247	X3248	X3249	X3250	X3251	X3252	X3253	X3254	X3261	X3262	X3264	X3266	X3270	X3273	X3274	X3277	X3280	X3281	X3282	X3283	X3285	X3286	X3314	X3315	X3316	X3317	X3318	X3332	X3335	X3336	X3345	X3346	X3347	X3348	X3349	X3350	X3351	X3352	X3353	X3354	X3355	X3356	X3357	X3358	X3359	X3360	X3363	X3366	X3370	X3373	X3381	X3388	X3389	X3390	X3391	X3392	X3393	X3394	X3395	X3398	X3432	X3433	X3434	X3435	X3436	X3467	X3468	X3511	X3512	X3547	X3548	X3549	X3550	X3551	X3552	X3556	X3560	X3561	X3562	X3563	X3564	X3565	X3566	X3567	X3568	X3569	X3576	X3579	X3581	X3582	X3583	X3584	X3585	X3586	X3587	X3588	X3589	X3610	X3611	X3612	X3613	Y3642	R3643	T3646	C3650	F3653	K3658	W3661	L3662	L3663	T3664	E3665	D3666	H3667	S3668	R3672	D3676	K3679	A3680	G3681	G3682	I3683	E3684	E3686	E3687	E3688	E3689	V3690	E3691	E3692	H3704	T3708	A3709	L3710	T3711	X3712	K3713	S3714	K3715	L3716	E3718	D3719	Y3720	L3721	M3722	M3723	A3724	Y3725	K3731	H3734	L3735	E3736	E3737	G3738	G3739	E3740	N3741	GLY	GLU	ALA	GLU	GLU	E3747	E3748	V3749	E3750	V3751	S3752	F3753	E3754	E3755	K3756	E3757	R3762	L3763	L3764	Q3767	L3770	R3773	G3774	A3775	V3779	L3780	Q3781	S3784	A3785	C3786	K3787	G3788	E3789	T3790	G3791	A3792	S3796	K3799	L3805	N3806	G3807	G3808	N3809	M3816	L3817	Y3819	F3829	Q3830	T3832	Q3833	A3834	M3836	S3840	Y3841	L3842	D3843	M3851	E3854	G3855	L3856	G3857	M3858	V3859	N3860	E3861	D3862	T3864	G3863	V3865	L3866	L3867	R3868	Q3869	N3870	G3871	E3872	K3873	V3874	M3875	A3876	D3877	D3878	E3879	R3886	Q3889	L3890	E3893	N3896	N3897	E3898	F3899	Q3900	N3901	T3905	Q3906	T3907	T3910	T3911	T3912	T3915	Q3927	L3930	S3931	D3932	W3935	Y3936	Y3937	S3938	G3939	K3940	D3941	E3945	Q3946	N3950	F3951	Q3960	N3963	T3966	G3971	C3973	N3976	R3984	V3990	G3991	F3992	L3993	H3994	V3995	A3997	H3998	K4002	L4003	S4007	N4008	L4013	V4024	L4027	M4034	M4044	M4047	L4048	V4049	S4051	S4052	S4053	E4056	L4059	D4063	M4064	K4069	D4070	G4073	S4074	E4075	Q4078	D4079	T4082	D4083	P4084	R4085	K4091	Q4094	K4095	A4096	M4097	D4098	S4099	Q4100	K4101	F4103	T4104	G4105	P4106	E4107	I4108	E4116	A4117	D4118	E4119	M4120	E4121	F4125	F4128	Q4133	E4134	R4137	D4138	M4142	V4143	A4144	V4145	S4151	E4152	P4155
-----	-------	-------	-------	-------	-------	-------	-------	-------	-------	-------	-------	-------	-------	-------	-------	-------	-------	-------	-------	-------	-------	-------	-------	-------	-------	-------	-------	-------	-------	-------	-------	-------	-------	-------	-------	-------	-----	-----	-----	-----	-----	-----	-----	-----	-----	-----	-----	-----	-------	-------	-------	-------	-------	-------	-------	-------	-------	-------	-------	-------	-------	-------	-------	-------	-------	-------	-------	-------	-------	-------	-------	-----	-----	-----	-----	-----	-----	-----	-------	-----	-----	-----	-----	-----	-----	-----	-----	-----	-----	-----	-----	-----	-----	-----	-----	-------	-------	-------	-------	-------	-------	-------	-------	-------	-------	-------	-------	-------	-------	-------	-------	-------	-------	-------	-------	-------	-------	-------	-------	-------	-------	-------	-------	-------	-------	-------	-------	-------	-------	-------	-------	-------	-------	-------	-------	-------	-------	-------	-------	-------	-------	-------	-------	-------	-------	-------	-------	-------	-------	-------	-------	-------	-------	-------	-------	-------	-------	-------	-------	-------	-------	-------	-------	-------	-------	-------	-------	-------	-------	-------	-------	-------	-------	-------	-------	-------	-------	-------	-------	-------	-------	-------	-------	-------	-------	-------	-------	-------	-------	-------	-------	-------	-------	-------	-------	-------	-------	-------	-------	-------	-------	-------	-------	-------	-------	-------	-------	-------	-------	-------	-------	-------	-------	-------	-------	-------	-------	-------	-------	-------	-------	-------	-------	-------	-------	-------	-------	-------	-------	-------	-------	-------	-------	-------	-------	-------	-------	-------	-------	-------	-------	-------	-------	-------	-------	-------	-------	-------	-------	-------	-------	-------	-------	-------	-------	-------	-------	-------	-------	-------	-------	-------	-------	-------	-------	-------	-------	-------	-------	-------	-------	-------	-------	-------	-------	-------	-------	-------	-------	-------	-------	-------	-------	-------	-------	-------	-------	-------	-------	-------	-------	-------	-------	-------	-------	-------	-------	-------	-------	-------	-------	-------	-------	-------	-------	-------	-------	-------	-------	-------	-------	-------	-------	-------	-------	-------	-------	-------	-------	-------	-------	-------	-------	-------	-------	-------	-------	-------	-------	-------	-------	-------	-------	-------	-------	-------	-------	-------	-------	-------	-------	-------	-------	-------	-------	-------	-------	-------	-------	-------	-------	-------	-------	-------	-------	-------	-------	-------	-------	-------	-------	-------	-------	-------	-------	-------	-------	-------	-------	-------	-------	-------	-------	-------	-------	-------	-------	-------	-------	-------	-------	-------	-------	-------	-------	-------	-------	-------	-------	-------	-------	-----	-----	-----	-----	-----	-------	-------	-------	-------	-------	-------	-------	-------	-------	-------	-------	-------	-------	-------	-------	-------	-------	-------	-------	-------	-------	-------	-------	-------	-------	-------	-------	-------	-------	-------	-------	-------	-------	-------	-------	-------	-------	-------	-------	-------	-------	-------	-------	-------	-------	-------	-------	-------	-------	-------	-------	-------	-------	-------	-------	-------	-------	-------	-------	-------	-------	-------	-------	-------	-------	-------	-------	-------	-------	-------	-------	-------	-------	-------	-------	-------	-------	-------	-------	-------	-------	-------	-------	-------	-------	-------	-------	-------	-------	-------	-------	-------	-------	-------	-------	-------	-------	-------	-------	-------	-------	-------	-------	-------	-------	-------	-------	-------	-------	-------	-------	-------	-------	-------	-------	-------	-------	-------	-------	-------	-------	-------	-------	-------	-------	-------	-------	-------	-------	-------	-------	-------	-------	-------	-------	-------	-------	-------	-------	-------	-------	-------	-------	-------	-------	-------	-------	-------	-------	-------	-------	-------	-------	-------	-------	-------	-------	-------	-------	-------	-------	-------	-------	-------	-------	-------	-------	-------	-------	-------	-------	-------	-------	-------	-------	-------	-------	-------	-------	-------	-------	-------	-------	-------	-------	-------	-------	-------	-------



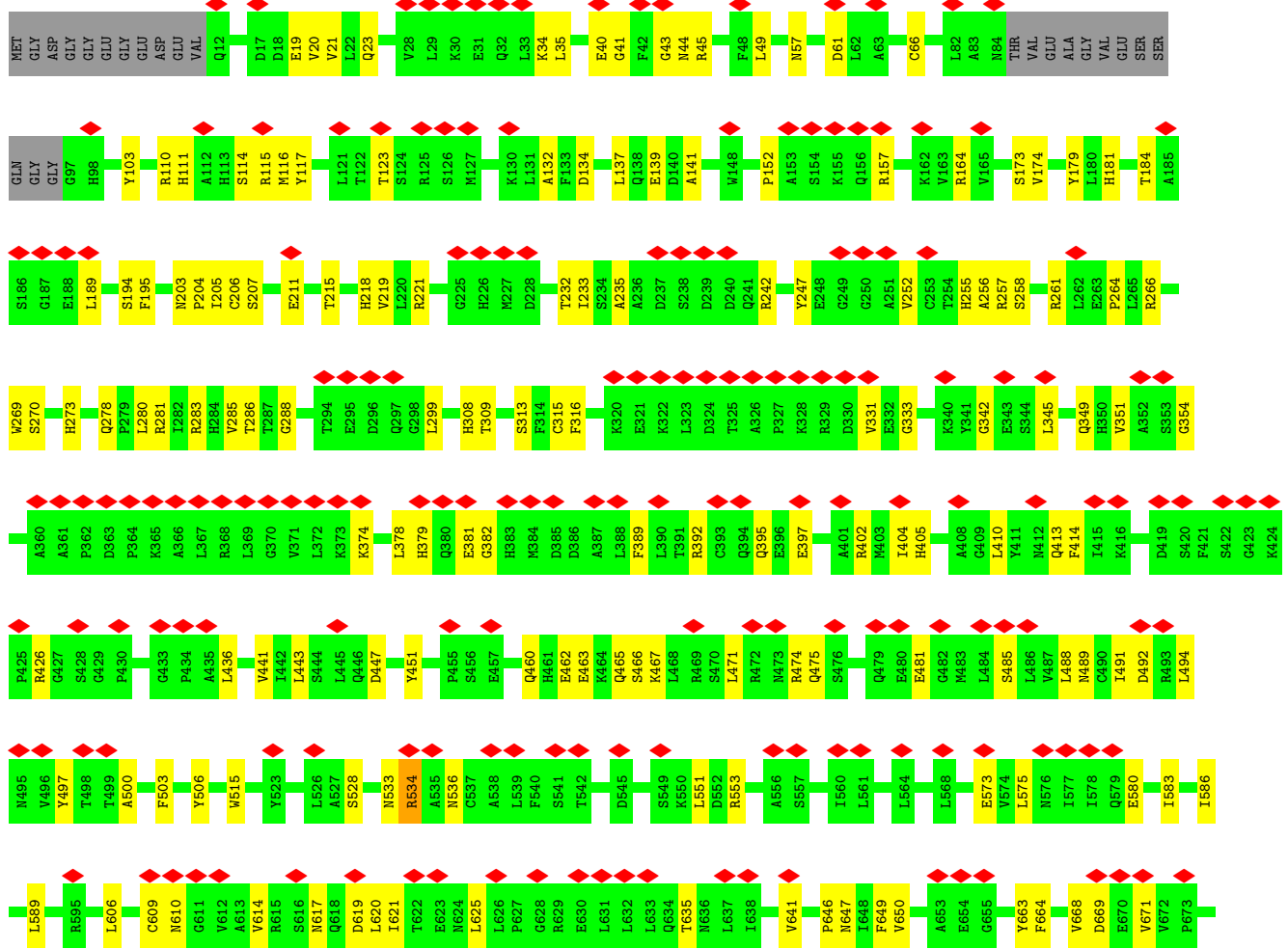
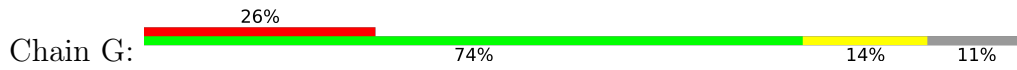
● Molecule 1: ryanodine receptor type 1

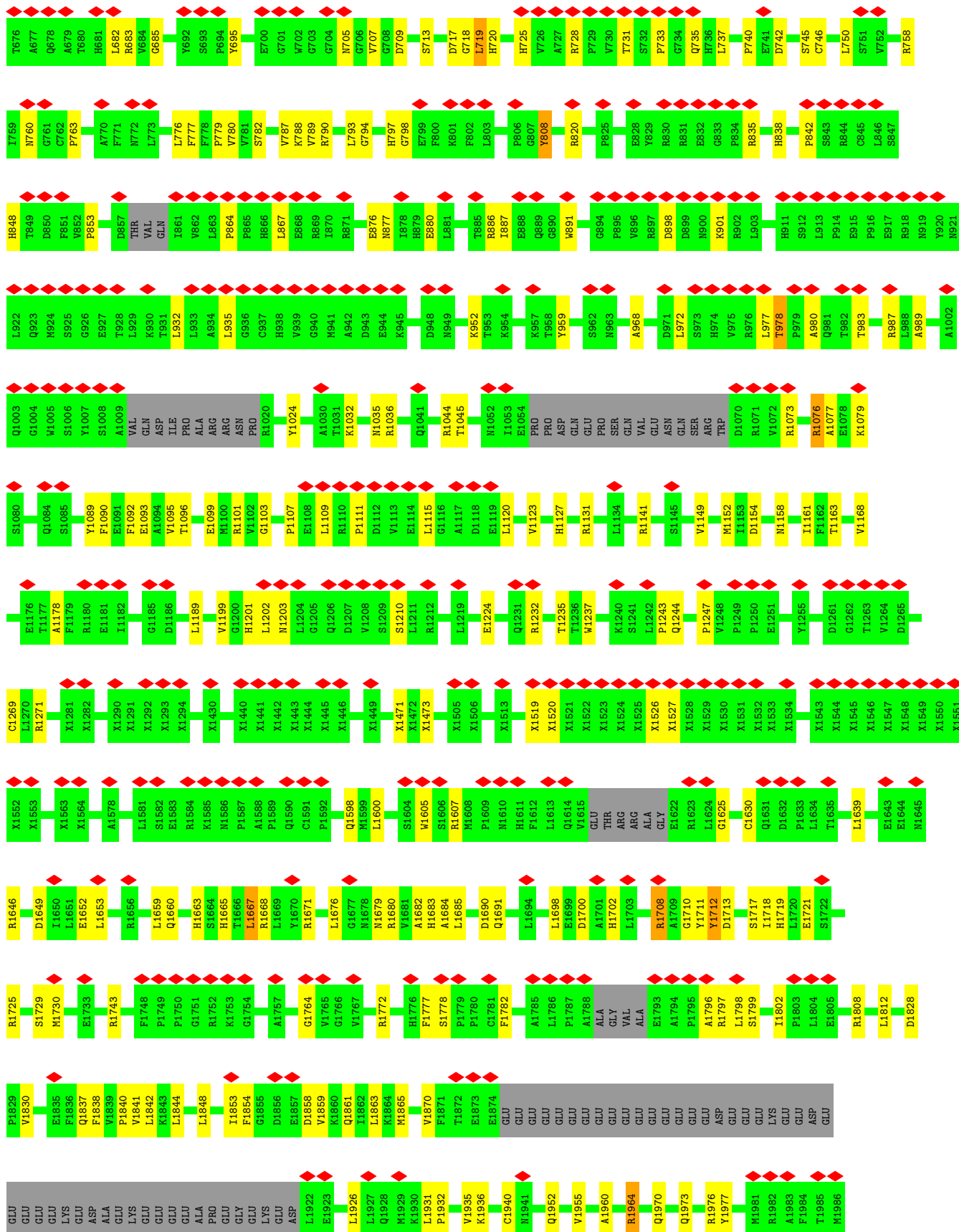


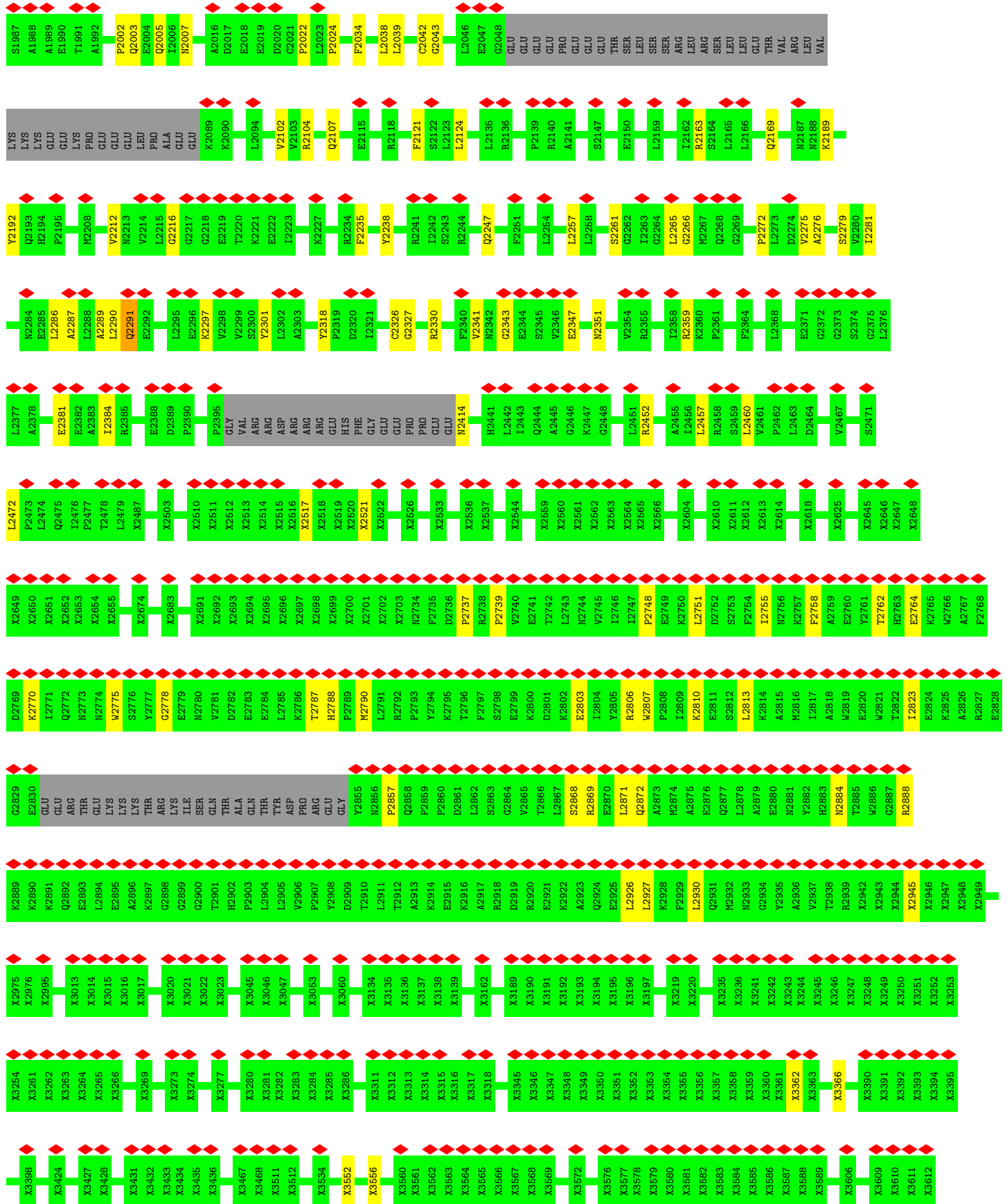


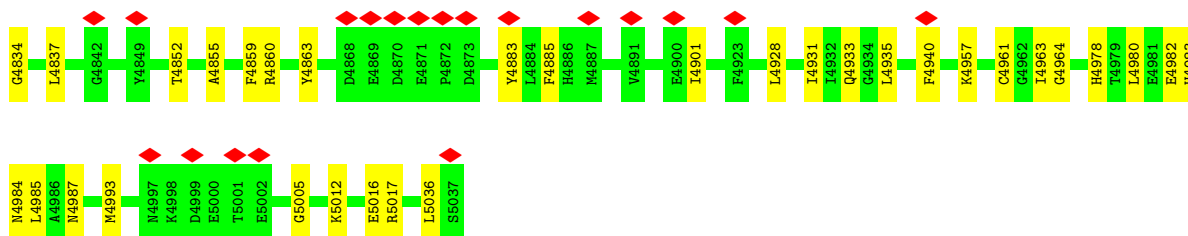


• Molecule 1: ryanodine receptor type 1

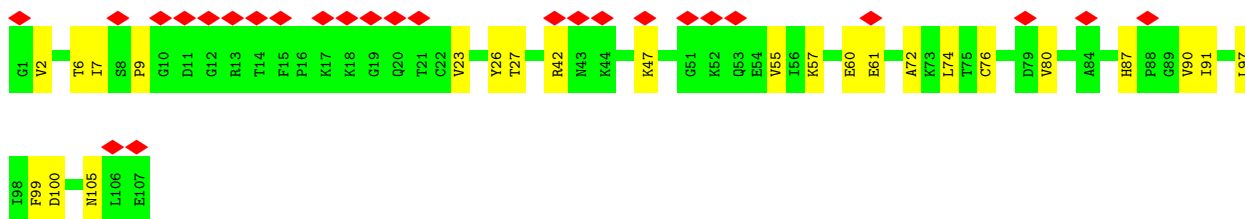
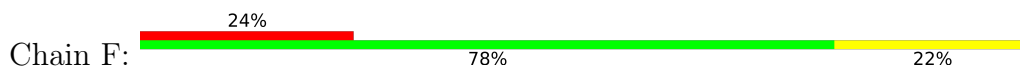




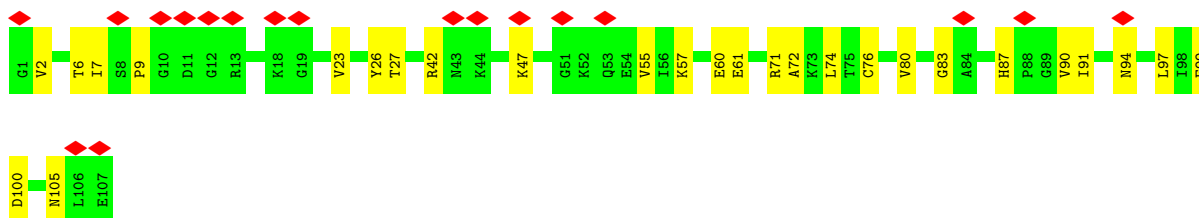
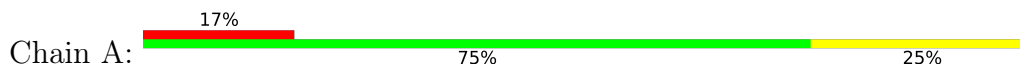




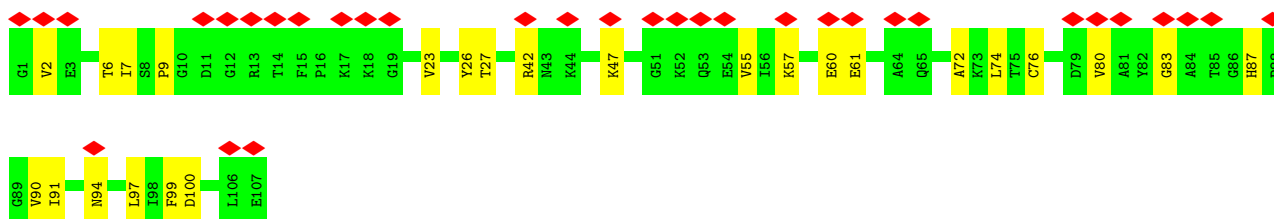
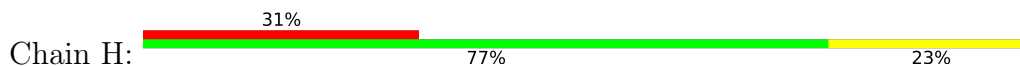
• Molecule 2: Peptidyl-prolyl cis-trans isomerase FKBP1B



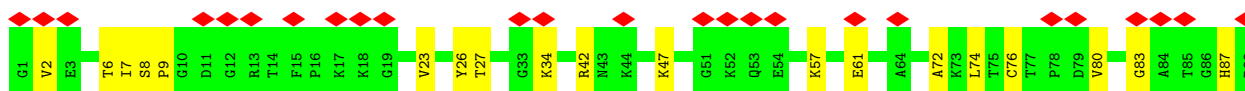
• Molecule 2: Peptidyl-prolyl cis-trans isomerase FKBP1B

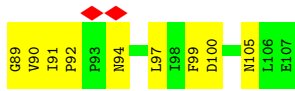


• Molecule 2: Peptidyl-prolyl cis-trans isomerase FKBP1B



• Molecule 2: Peptidyl-prolyl cis-trans isomerase FKBP1B





4 Experimental information

Property	Value	Source
EM reconstruction method	SINGLE PARTICLE	Depositor
Imposed symmetry	POINT, C4	Depositor
Number of particles used	791956	Depositor
Resolution determination method	OTHER	Depositor
CTF correction method	PHASE FLIPPING AND AMPLITUDE CORRECTION	Depositor
Microscope	FEI POLARA 300	Depositor
Voltage (kV)	300	Depositor
Electron dose ($e^-/\text{\AA}^2$)	50	Depositor
Minimum defocus (nm)	Not provided	
Maximum defocus (nm)	Not provided	
Magnification	Not provided	
Image detector	GATAN K2 SUMMIT (4k x 4k)	Depositor
Maximum map value	0.555	Depositor
Minimum map value	-0.221	Depositor
Average map value	0.001	Depositor
Map value standard deviation	0.030	Depositor
Recommended contour level	0.16	Depositor
Map size (Å)	502.0, 502.0, 502.0	wwPDB
Map dimensions	400, 400, 400	wwPDB
Map angles (°)	90.0, 90.0, 90.0	wwPDB
Pixel spacing (Å)	1.255, 1.255, 1.255	Depositor

5 Model quality [i](#)

5.1 Standard geometry [i](#)

Bond lengths and bond angles in the following residue types are not validated in this section: ZN, CA

The Z score for a bond length (or angle) is the number of standard deviations the observed value is removed from the expected value. A bond length (or angle) with $|Z| > 5$ is considered an outlier worth inspection. RMSZ is the root-mean-square of all Z scores of the bond lengths (or angles).

Mol	Chain	Bond lengths		Bond angles	
		RMSZ	# Z >5	RMSZ	# Z >5
1	B	0.33	0/25428	0.56	5/34534 (0.0%)
1	E	0.33	0/25428	0.56	6/34534 (0.0%)
1	G	0.33	0/25428	0.56	5/34534 (0.0%)
1	I	0.33	0/25428	0.56	5/34534 (0.0%)
2	A	0.33	0/834	0.56	0/1123
2	F	0.33	0/834	0.56	0/1123
2	H	0.33	0/834	0.56	0/1123
2	J	0.33	0/834	0.56	0/1123
All	All	0.33	0/105048	0.56	21/142628 (0.0%)

Chiral center outliers are detected by calculating the chiral volume of a chiral center and verifying if the center is modelled as a planar moiety or with the opposite hand. A planarity outlier is detected by checking planarity of atoms in a peptide group, atoms in a mainchain group or atoms of a sidechain that are expected to be planar.

Mol	Chain	#Chirality outliers	#Planarity outliers
1	B	0	12
1	E	0	12
1	G	0	12
1	I	0	12
All	All	0	48

There are no bond length outliers.

The worst 5 of 21 bond angle outliers are listed below:

Mol	Chain	Res	Type	Atoms	Z	Observed(°)	Ideal(°)
1	I	719	LEU	CA-CB-CG	6.77	130.87	115.30
1	E	719	LEU	CA-CB-CG	6.76	130.85	115.30
1	G	719	LEU	CA-CB-CG	6.75	130.81	115.30
1	B	719	LEU	CA-CB-CG	6.74	130.79	115.30

Continued on next page...

Continued from previous page...

Mol	Chain	Res	Type	Atoms	Z	Observed(°)	Ideal(°)
1	E	3764	LEU	CA-CB-CG	6.40	130.03	115.30

There are no chirality outliers.

5 of 48 planarity outliers are listed below:

Mol	Chain	Res	Type	Group
1	B	1676	LEU	Peptide
1	B	1690	ASP	Peptide
1	B	1712	TYR	Peptide
1	B	1828	ASP	Peptide
1	B	808	TYR	Peptide

5.2 Too-close contacts [i](#)

In the following table, the Non-H and H(model) columns list the number of non-hydrogen atoms and hydrogen atoms in the chain respectively. The H(added) column lists the number of hydrogen atoms added and optimized by MolProbity. The Clashes column lists the number of clashes within the asymmetric unit, whereas Symm-Clashes lists symmetry-related clashes.

Mol	Chain	Non-H	H(model)	H(added)	Clashes	Symm-Clashes
1	B	29369	0	24714	390	0
1	E	29369	0	24715	385	0
1	G	29369	0	24713	387	0
1	I	29369	0	24715	388	0
2	A	818	0	824	16	0
2	F	818	0	824	14	0
2	H	818	0	824	14	0
2	J	818	0	824	20	0
3	B	1	0	0	0	0
3	E	1	0	0	0	0
3	G	1	0	0	0	0
3	I	1	0	0	0	0
4	B	1	0	0	0	0
4	E	1	0	0	0	0
4	G	1	0	0	0	0
4	I	1	0	0	0	0
All	All	120756	0	102153	1593	0

The all-atom clashscore is defined as the number of clashes found per 1000 atoms (including hydrogen atoms). The all-atom clashscore for this structure is 7.

The worst 5 of 1593 close contacts within the same asymmetric unit are listed below, sorted by

their clash magnitude.

Atom-1	Atom-2	Interatomic distance (Å)	Clash overlap (Å)
1:E:4674:GLU:HG3	1:E:4714:ASN:HB3	1.69	0.75
1:G:4674:GLU:HG3	1:G:4714:ASN:HB3	1.69	0.74
1:B:4674:GLU:HG3	1:B:4714:ASN:HB3	1.69	0.73
1:I:4674:GLU:HG3	1:I:4714:ASN:HB3	1.69	0.73
1:G:788:LYS:HG2	1:G:1630:CYS:H	1.56	0.71

There are no symmetry-related clashes.

5.3 Torsion angles [i](#)

5.3.1 Protein backbone [i](#)

In the following table, the Percentiles column shows the percent Ramachandran outliers of the chain as a percentile score with respect to all PDB entries followed by that with respect to all EM entries.

The Analysed column shows the number of residues for which the backbone conformation was analysed, and the total number of residues.

Mol	Chain	Analysed	Favoured	Allowed	Outliers	Percentiles	
1	B	3235/4687 (69%)	2897 (90%)	334 (10%)	4 (0%)	51	85
1	E	3235/4687 (69%)	2895 (90%)	336 (10%)	4 (0%)	51	85
1	G	3235/4687 (69%)	2896 (90%)	335 (10%)	4 (0%)	51	85
1	I	3235/4687 (69%)	2895 (90%)	336 (10%)	4 (0%)	51	85
2	A	105/107 (98%)	95 (90%)	10 (10%)	0	100	100
2	F	105/107 (98%)	95 (90%)	10 (10%)	0	100	100
2	H	105/107 (98%)	95 (90%)	10 (10%)	0	100	100
2	J	105/107 (98%)	95 (90%)	10 (10%)	0	100	100
All	All	13360/19176 (70%)	11963 (90%)	1381 (10%)	16 (0%)	54	85

5 of 16 Ramachandran outliers are listed below:

Mol	Chain	Res	Type
1	B	1708	ARG
1	E	1708	ARG
1	I	1708	ARG
1	G	1708	ARG

Continued on next page...

Continued from previous page...

Mol	Chain	Res	Type
1	B	1932	PRO

5.3.2 Protein sidechains [i](#)

In the following table, the Percentiles column shows the percent sidechain outliers of the chain as a percentile score with respect to all PDB entries followed by that with respect to all EM entries.

The Analysed column shows the number of residues for which the sidechain conformation was analysed, and the total number of residues.

Mol	Chain	Analysed	Rotameric	Outliers	Percentiles	
1	B	2493/3209 (78%)	2473 (99%)	20 (1%)	81	89
1	E	2493/3209 (78%)	2473 (99%)	20 (1%)	81	89
1	G	2493/3209 (78%)	2473 (99%)	20 (1%)	81	89
1	I	2493/3209 (78%)	2473 (99%)	20 (1%)	81	89
2	A	88/88 (100%)	88 (100%)	0	100	100
2	F	88/88 (100%)	88 (100%)	0	100	100
2	H	88/88 (100%)	88 (100%)	0	100	100
2	J	88/88 (100%)	88 (100%)	0	100	100
All	All	10324/13188 (78%)	10244 (99%)	80 (1%)	82	89

5 of 80 residues with a non-rotameric sidechain are listed below:

Mol	Chain	Res	Type
1	I	4189	ARG
1	G	4034	ASN
1	I	4985	LEU
1	G	1964	ARG
1	G	4137	ARG

Sometimes sidechains can be flipped to improve hydrogen bonding and reduce clashes. 5 of 150 such sidechains are listed below:

Mol	Chain	Res	Type
1	G	105	HIS
1	G	4120	ASN
1	G	273	HIS
1	G	1691	GLN

Continued on next page...

Continued from previous page...

Mol	Chain	Res	Type
1	E	479	GLN

5.3.3 RNA [i](#)

There are no RNA molecules in this entry.

5.4 Non-standard residues in protein, DNA, RNA chains [i](#)

There are no non-standard protein/DNA/RNA residues in this entry.

5.5 Carbohydrates [i](#)

There are no monosaccharides in this entry.

5.6 Ligand geometry [i](#)

Of 8 ligands modelled in this entry, 8 are monoatomic - leaving 0 for Mogul analysis.

There are no bond length outliers.

There are no bond angle outliers.

There are no chirality outliers.

There are no torsion outliers.

There are no ring outliers.

No monomer is involved in short contacts.

5.7 Other polymers [i](#)

There are no such residues in this entry.

5.8 Polymer linkage issues [i](#)

The following chains have linkage breaks:

Mol	Chain	Number of breaks
1	G	12
1	I	12

Continued on next page...

Continued from previous page...

Mol	Chain	Number of breaks
1	E	12
1	B	12

The worst 5 of 48 chain breaks are listed below:

Model	Chain	Residue-1	Atom-1	Residue-2	Atom-2	Distance (Å)
1	G	3613:UNK	C	3639:THR	N	45.09
1	I	3613:UNK	C	3639:THR	N	45.04
1	E	3613:UNK	C	3639:THR	N	45.01
1	B	3613:UNK	C	3639:THR	N	44.86
1	G	3163:UNK	C	3170:UNK	N	16.51

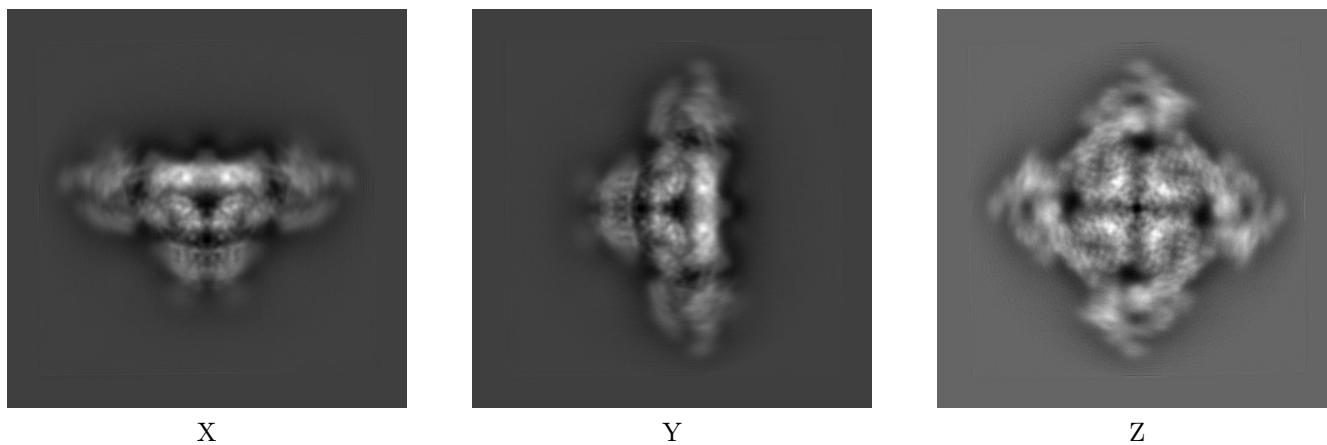
6 Map visualisation [i](#)

This section contains visualisations of the EMDB entry EMD-22393. These allow visual inspection of the internal detail of the map and identification of artifacts.

No raw map or half-maps were deposited for this entry and therefore no images, graphs, etc. pertaining to the raw map can be shown.

6.1 Orthogonal projections [i](#)

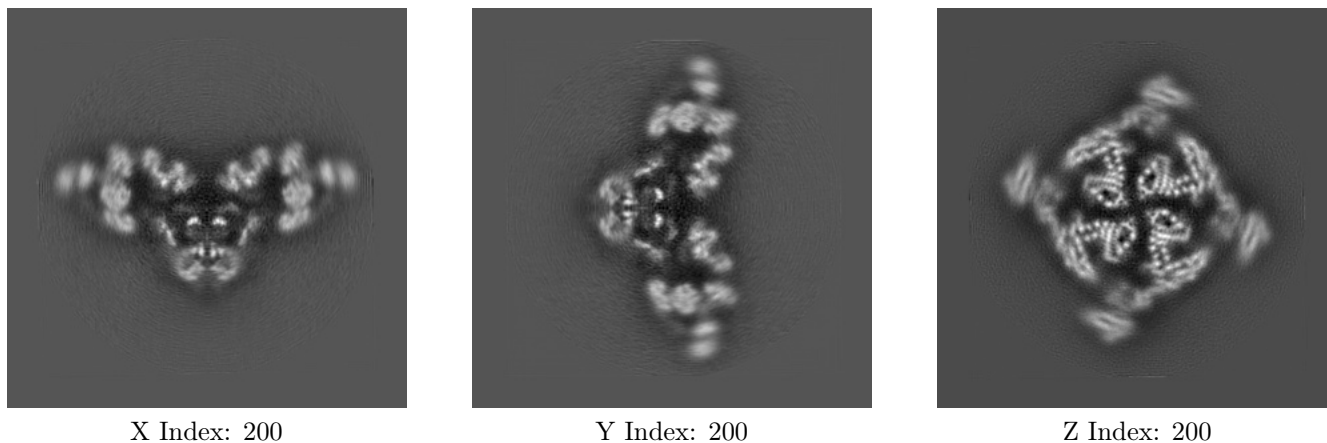
6.1.1 Primary map



The images above show the map projected in three orthogonal directions.

6.2 Central slices [i](#)

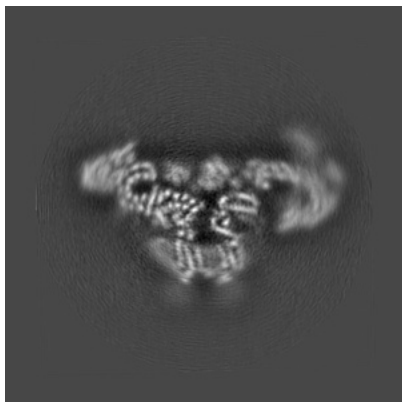
6.2.1 Primary map



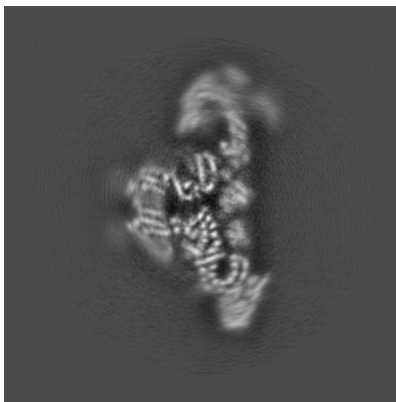
The images above show central slices of the map in three orthogonal directions.

6.3 Largest variance slices [i](#)

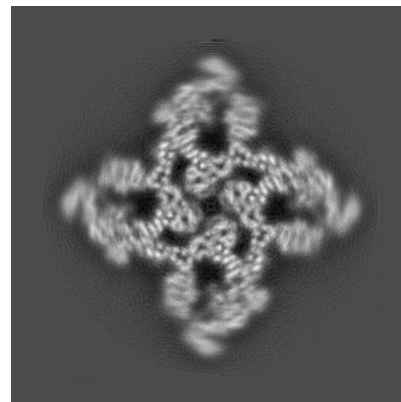
6.3.1 Primary map



X Index: 222



Y Index: 177



Z Index: 230

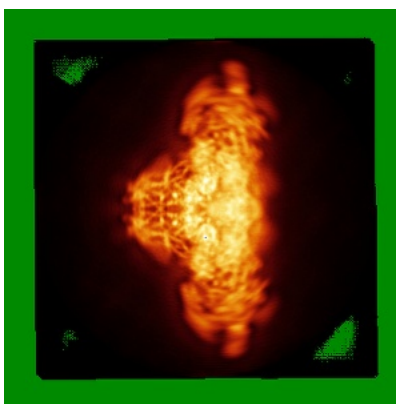
The images above show the largest variance slices of the map in three orthogonal directions.

6.4 Orthogonal standard-deviation projections (False-color) [i](#)

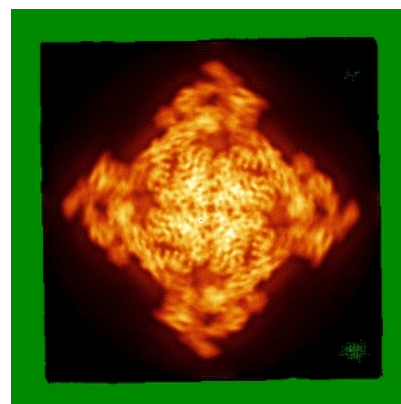
6.4.1 Primary map



X



Y



Z

The images above show the map standard deviation projections with false color in three orthogonal directions. Minimum values are shown in green, max in blue, and dark to light orange shades represent small to large values respectively.

6.5 Orthogonal surface views [i](#)

6.5.1 Primary map



The images above show the 3D surface view of the map at the recommended contour level 0.16. These images, in conjunction with the slice images, may facilitate assessment of whether an appropriate contour level has been provided.

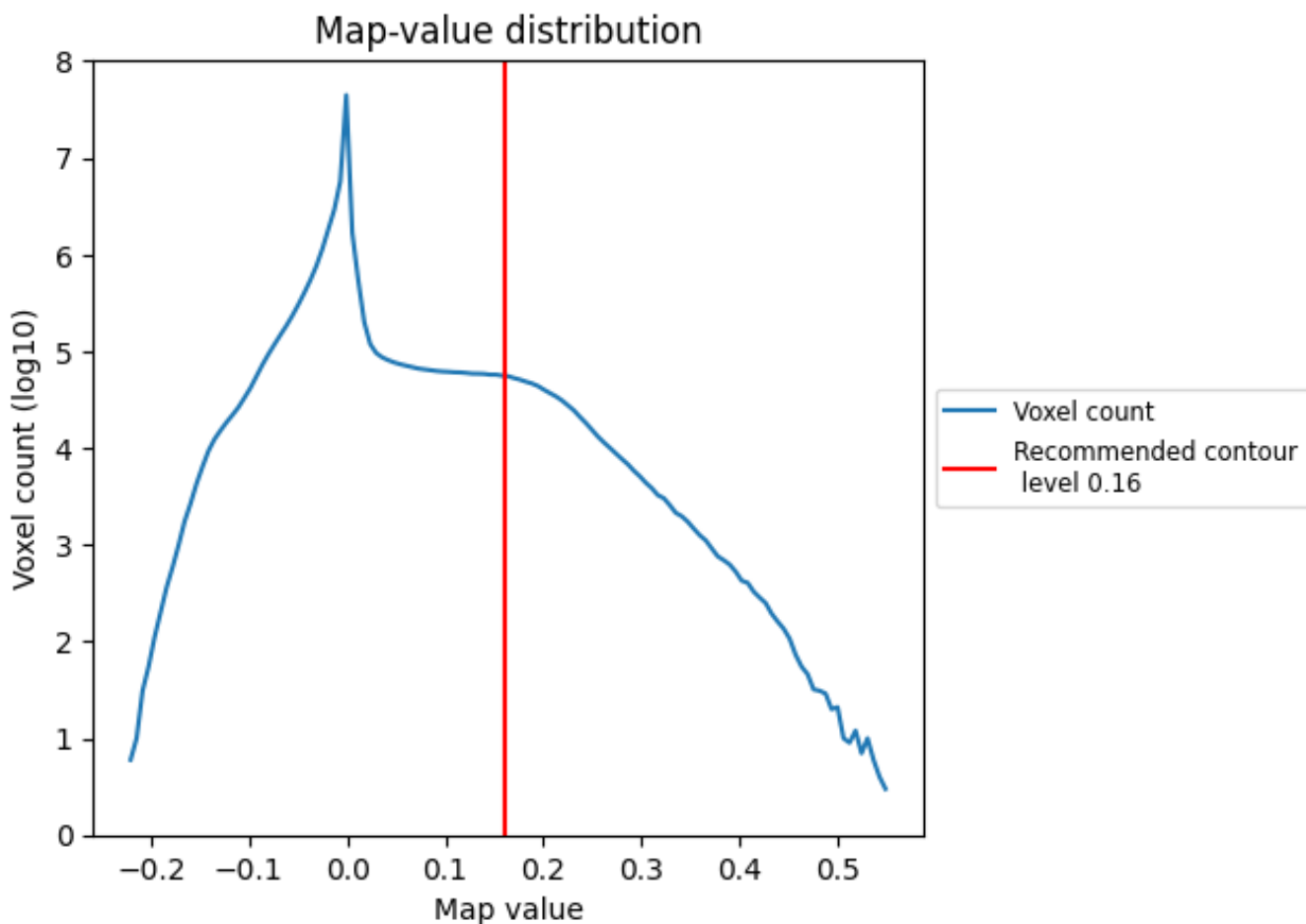
6.6 Mask visualisation [i](#)

This section was not generated. No masks/segmentation were deposited.

7 Map analysis [i](#)

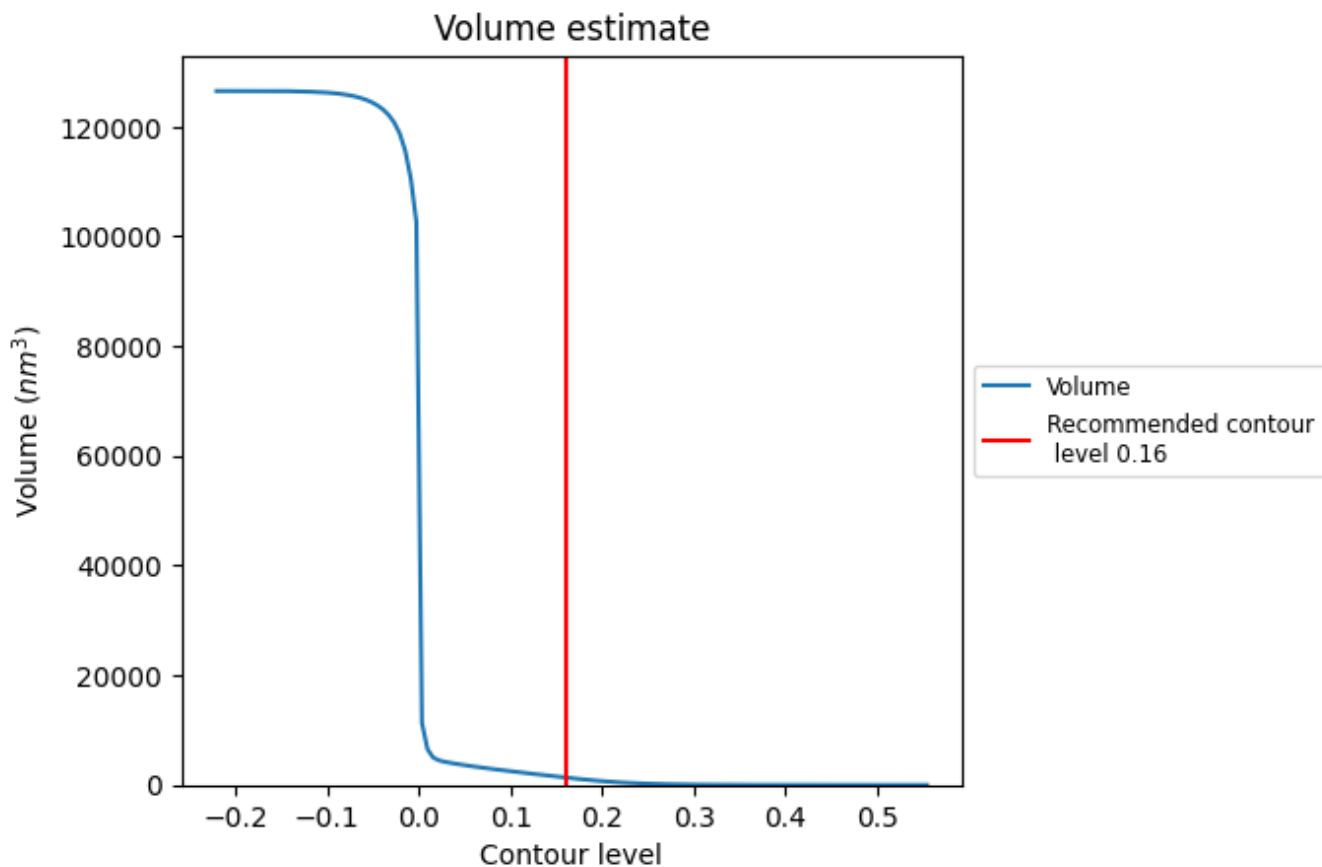
This section contains the results of statistical analysis of the map.

7.1 Map-value distribution [i](#)



The map-value distribution is plotted in 128 intervals along the x-axis. The y-axis is logarithmic. A spike in this graph at zero usually indicates that the volume has been masked.

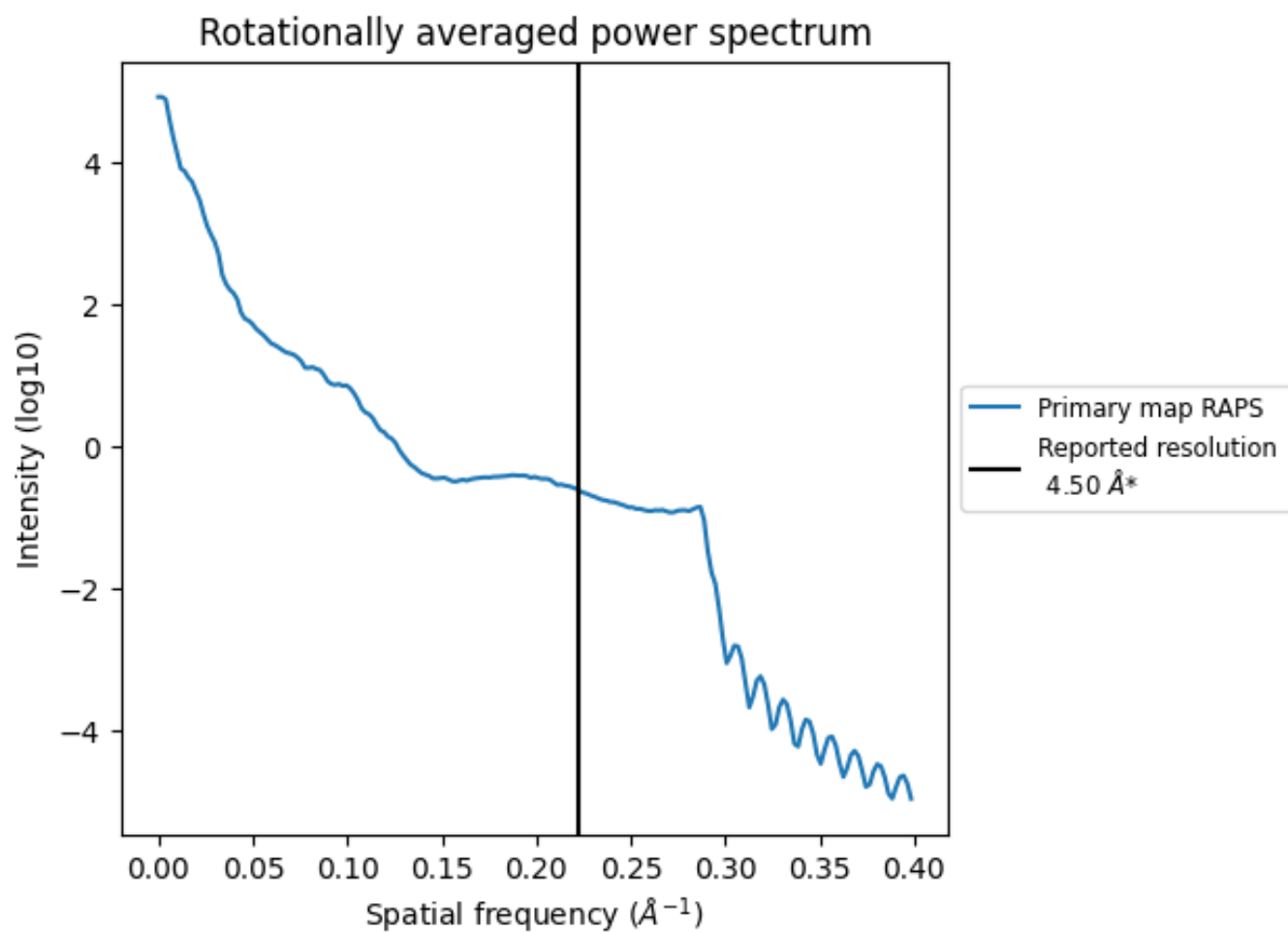
7.2 Volume estimate [\(i\)](#)



The volume at the recommended contour level is 1358 nm³; this corresponds to an approximate mass of 1227 kDa.

The volume estimate graph shows how the enclosed volume varies with the contour level. The recommended contour level is shown as a vertical line and the intersection between the line and the curve gives the volume of the enclosed surface at the given level.

7.3 Rotationally averaged power spectrum [i](#)



*Reported resolution corresponds to spatial frequency of 0.222 Å⁻¹

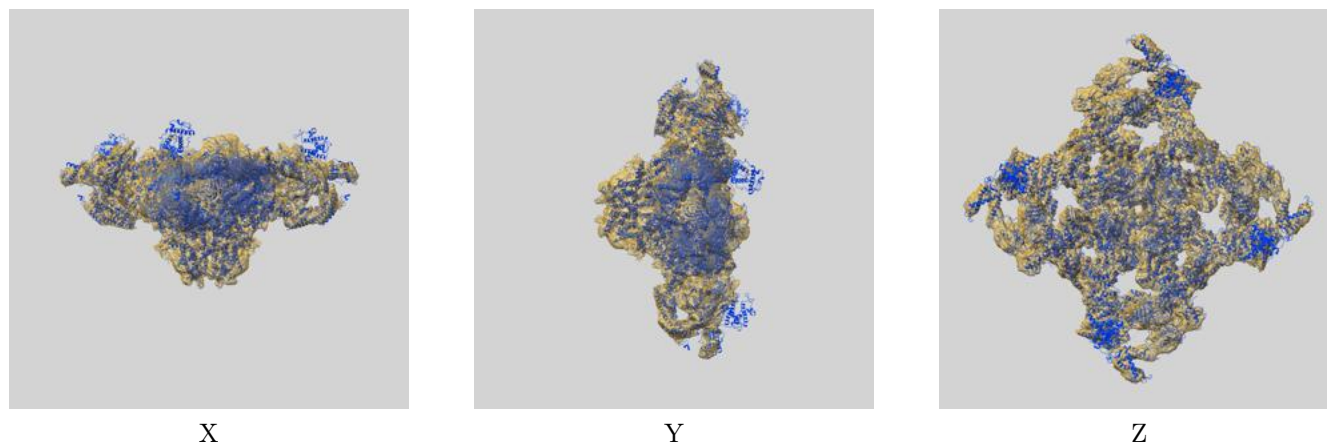
8 Fourier-Shell correlation

This section was not generated. No FSC curve or half-maps provided.

9 Map-model fit [i](#)

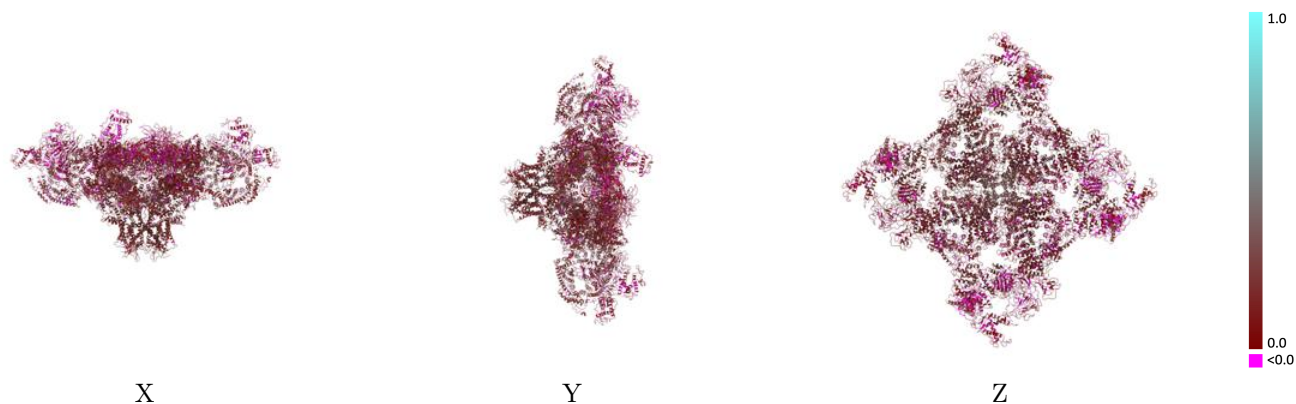
This section contains information regarding the fit between EMDB map EMD-22393 and PDB model 7JMG. Per-residue inclusion information can be found in section 3 on page 5.

9.1 Map-model overlay [i](#)



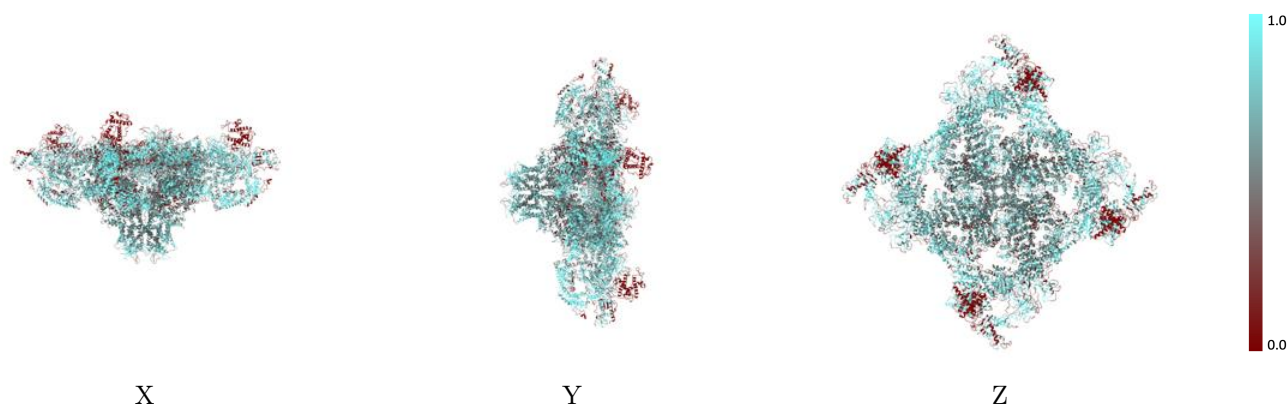
The images above show the 3D surface view of the map at the recommended contour level 0.16 at 50% transparency in yellow overlaid with a ribbon representation of the model coloured in blue. These images allow for the visual assessment of the quality of fit between the atomic model and the map.

9.2 Q-score mapped to coordinate model [i](#)



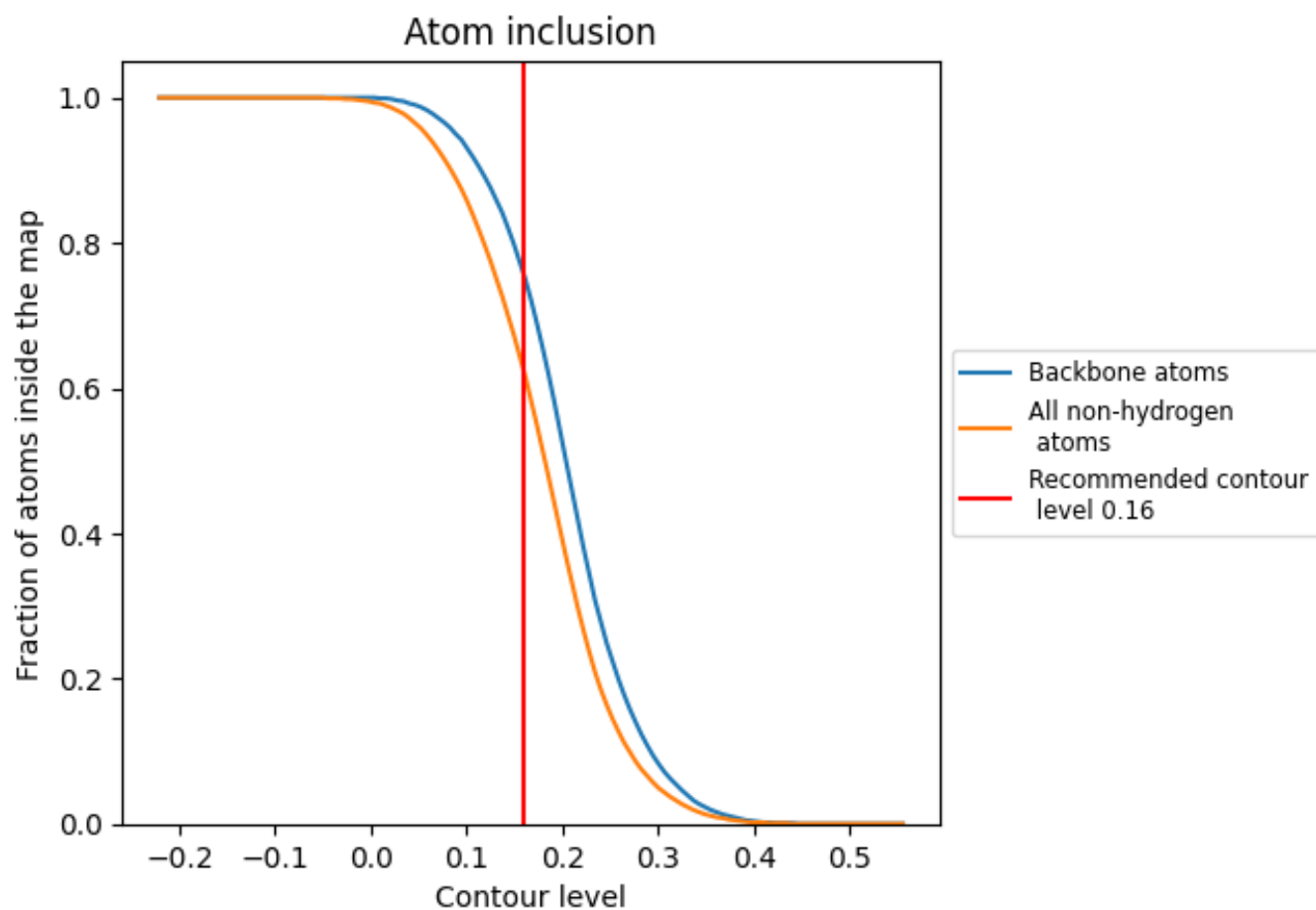
The images above show the model with each residue coloured according to its Q-score. This shows their resolvability in the map with higher Q-score values reflecting better resolvability. Please note: Q-score is calculating the resolvability of atoms, and thus high values are only expected at resolutions at which atoms can be resolved. Low Q-score values may therefore be expected for many entries.

9.3 Atom inclusion mapped to coordinate model [i](#)



The images above show the model with each residue coloured according to its atom inclusion. This shows to what extent they are inside the map at the recommended contour level (0.16).



















9.4 Atom inclusion [i](#)



At the recommended contour level, 76% of all backbone atoms, 62% of all non-hydrogen atoms, are inside the map.

9.5 Map-model fit summary

The table lists the average atom inclusion at the recommended contour level (0.16) and Q-score for the entire model and for each chain.

Chain	Atom inclusion	Q-score
All	 0.6220	 0.1550
A	 0.7060	 0.1500
B	 0.6410	 0.1760
E	 0.6130	 0.1450
F	 0.6580	 0.1250
G	 0.6060	 0.1410
H	 0.6150	 0.1140
I	 0.6220	 0.1600
J	 0.6740	 0.1360

