



Full wwPDB EM Validation Report ⓘ

Nov 14, 2022 – 05:08 PM JST

PDB ID : 6JHS
EMDB ID : EMD-9829
Title : The cryo-EM structure of HAV bound to a neutralizing antibody-F7
Authors : Cao, L.; Liu, P.; Yang, P.; Gao, Q.; Li, H.; Sun, Y.; Zhu, L.; Lin, J.; Su, D.;
Rao, Z.; Wang, X.
Deposited on : 2019-02-19
Resolution : 3.05 Å(reported)

This is a Full wwPDB EM Validation Report for a publicly released PDB entry.

We welcome your comments at validation@mail.wwpdb.org

A user guide is available at

<https://www.wwpdb.org/validation/2017/EMValidationReportHelp>

with specific help available everywhere you see the ⓘ symbol.

The types of validation reports are described at

<http://www.wwpdb.org/validation/2017/FAQs#types>.

The following versions of software and data (see [references ⓘ](#)) were used in the production of this report:

EMDB validation analysis : 0.0.1.dev43
MolProbity : 4.02b-467
Percentile statistics : 20191225.v01 (using entries in the PDB archive December 25th 2019)
MapQ : 1.9.9
Ideal geometry (proteins) : Engh & Huber (2001)
Ideal geometry (DNA, RNA) : Parkinson et al. (1996)
Validation Pipeline (wwPDB-VP) : 2.31.2

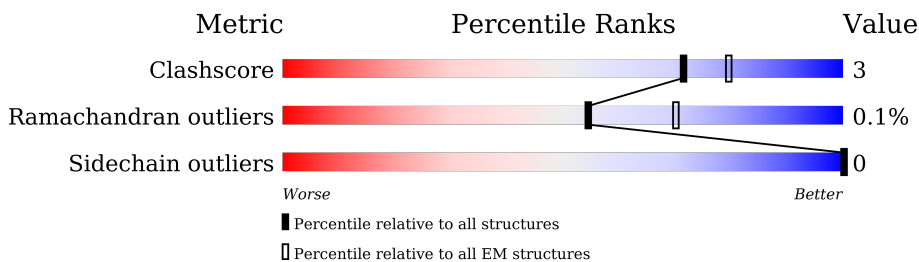
1 Overall quality at a glance

The following experimental techniques were used to determine the structure:

ELECTRON MICROSCOPY

The reported resolution of this entry is 3.05 Å.

Percentile scores (ranging between 0-100) for global validation metrics of the entry are shown in the following graphic. The table shows the number of entries on which the scores are based.



Metric	Whole archive (#Entries)	EM structures (#Entries)
Clashscore	158937	4297
Ramachandran outliers	154571	4023
Sidechain outliers	154315	3826

The table below summarises the geometric issues observed across the polymeric chains and their fit to the map. The red, orange, yellow and green segments of the bar indicate the fraction of residues that contain outliers for ≥ 3 , 2, 1 and 0 types of geometric quality criteria respectively. A grey segment represents the fraction of residues that are not modelled. The numeric value for each fraction is indicated below the corresponding segment, with a dot representing fractions $\leq 5\%$. The upper red bar (where present) indicates the fraction of residues that have poor fit to the EM map (all-atom inclusion $< 40\%$). The numeric value is given above the bar.

Mol	Chain	Length	Quality of chain
1	A	278	
2	B	222	
3	C	246	
4	D	213	
5	E	221	

2 Entry composition [i](#)

There are 5 unique types of molecules in this entry. The entry contains 8978 atoms, of which 0 are hydrogens and 0 are deuteriums.

In the tables below, the AltConf column contains the number of residues with at least one atom in alternate conformation and the Trace column contains the number of residues modelled with at most 2 atoms.

- Molecule 1 is a protein called VP1.

Mol	Chain	Residues	Atoms					AltConf	Trace
			Total	C	N	O	S		
1	A	260	2032	1298	332	395	7	0	0

- Molecule 2 is a protein called VP2.

Mol	Chain	Residues	Atoms					AltConf	Trace
			Total	C	N	O	S		
2	B	216	1708	1098	291	315	4	0	0

- Molecule 3 is a protein called VP3.

Mol	Chain	Residues	Atoms					AltConf	Trace
			Total	C	N	O	S		
3	C	246	1956	1248	331	363	14	0	0

- Molecule 4 is a protein called FAB Light Chain.

Mol	Chain	Residues	Atoms					AltConf	Trace
			Total	C	N	O	S		
4	D	213	1641	1022	274	336	9	0	0

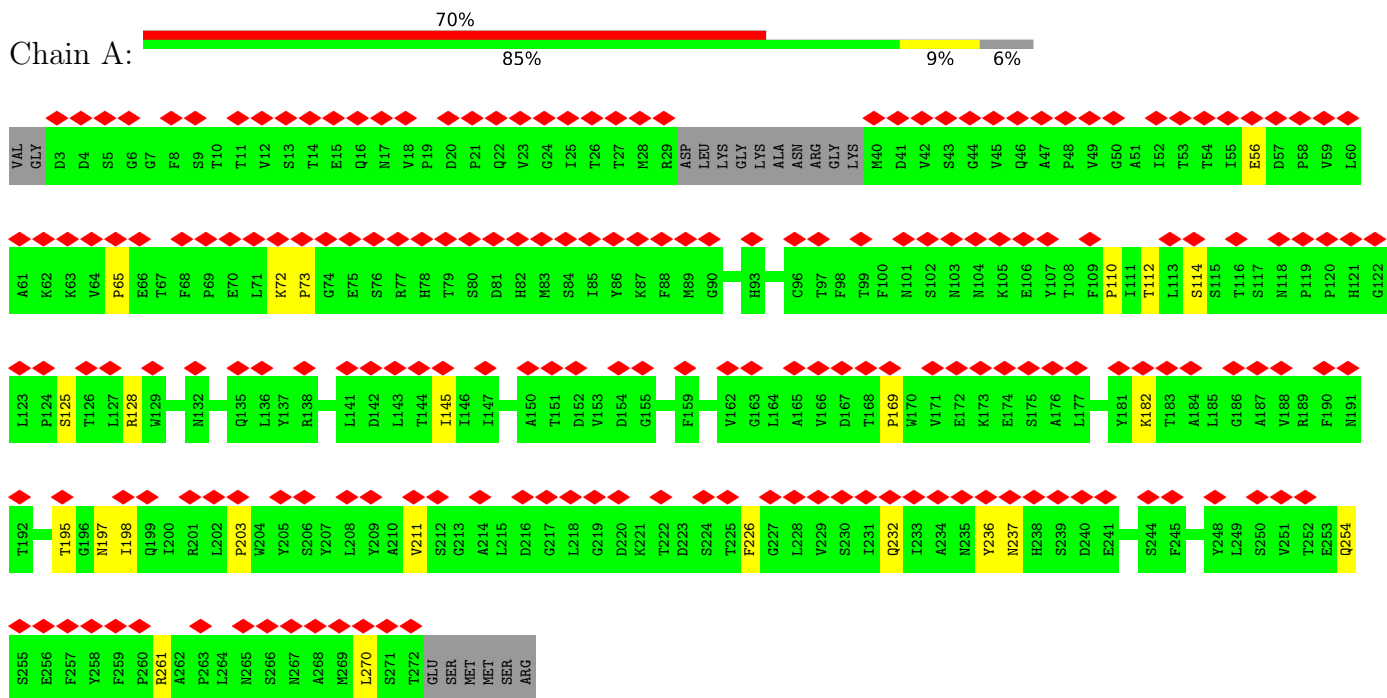
- Molecule 5 is a protein called FAB Heavy Chain.

Mol	Chain	Residues	Atoms					AltConf	Trace
			Total	C	N	O	S		
5	E	217	1641	1042	268	322	9	0	0

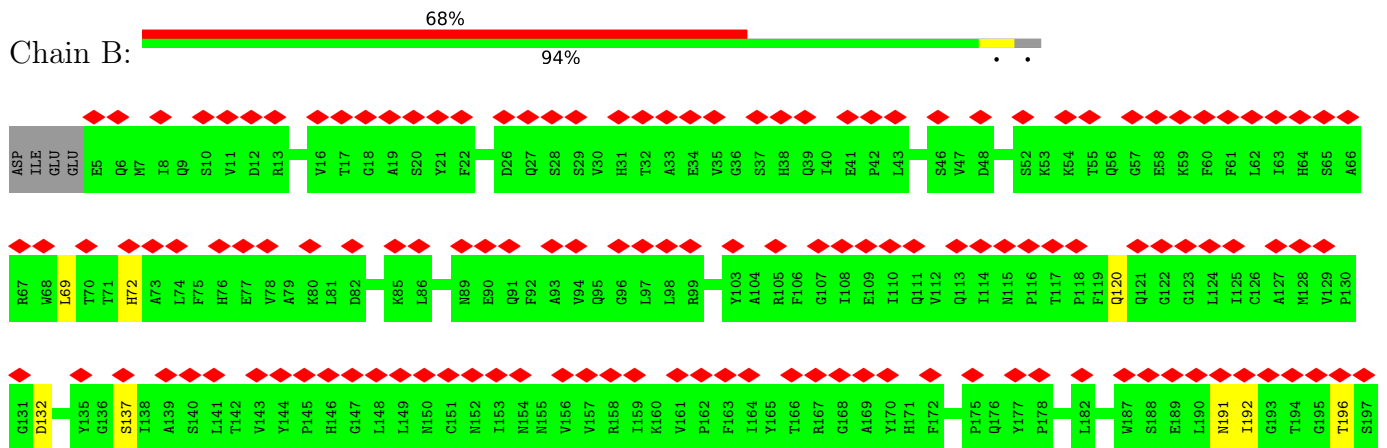
3 Residue-property plots

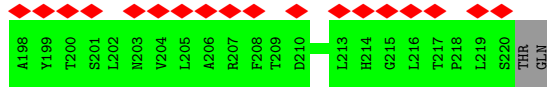
These plots are drawn for all protein, RNA, DNA and oligosaccharide chains in the entry. The first graphic for a chain summarises the proportions of the various outlier classes displayed in the second graphic. The second graphic shows the sequence view annotated by issues in geometry and atom inclusion in map density. Residues are color-coded according to the number of geometric quality criteria for which they contain at least one outlier: green = 0, yellow = 1, orange = 2 and red = 3 or more. A red diamond above a residue indicates a poor fit to the EM map for this residue (all-atom inclusion < 40%). Stretches of 2 or more consecutive residues without any outlier are shown as a green connector. Residues present in the sample, but not in the model, are shown in grey.

- Molecule 1: VP1

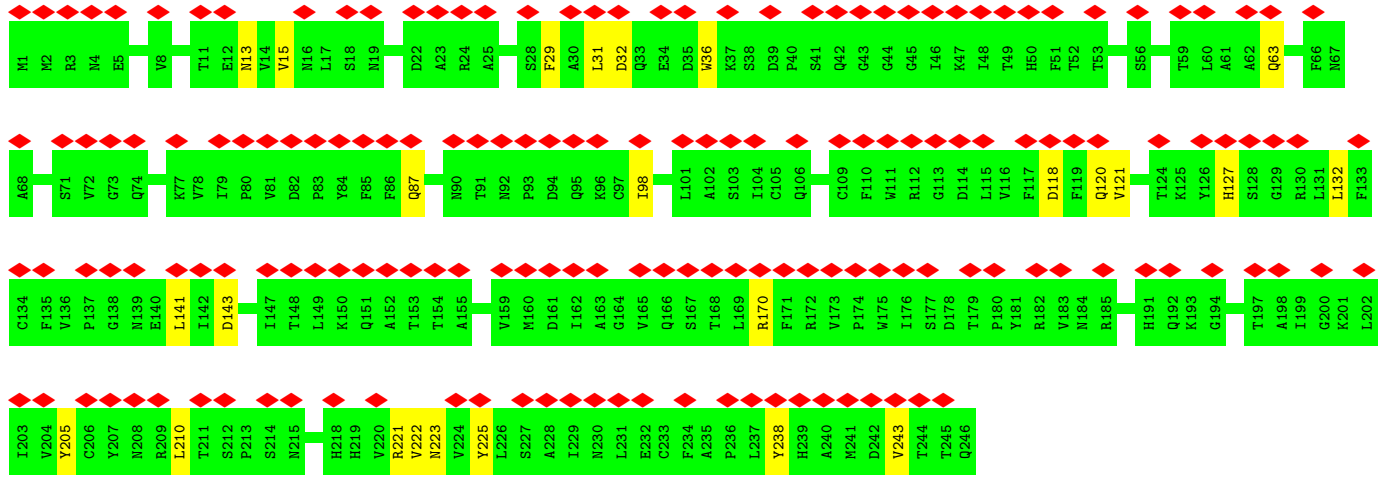
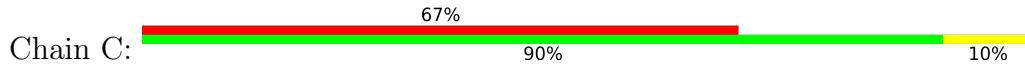


- Molecule 2: VP2

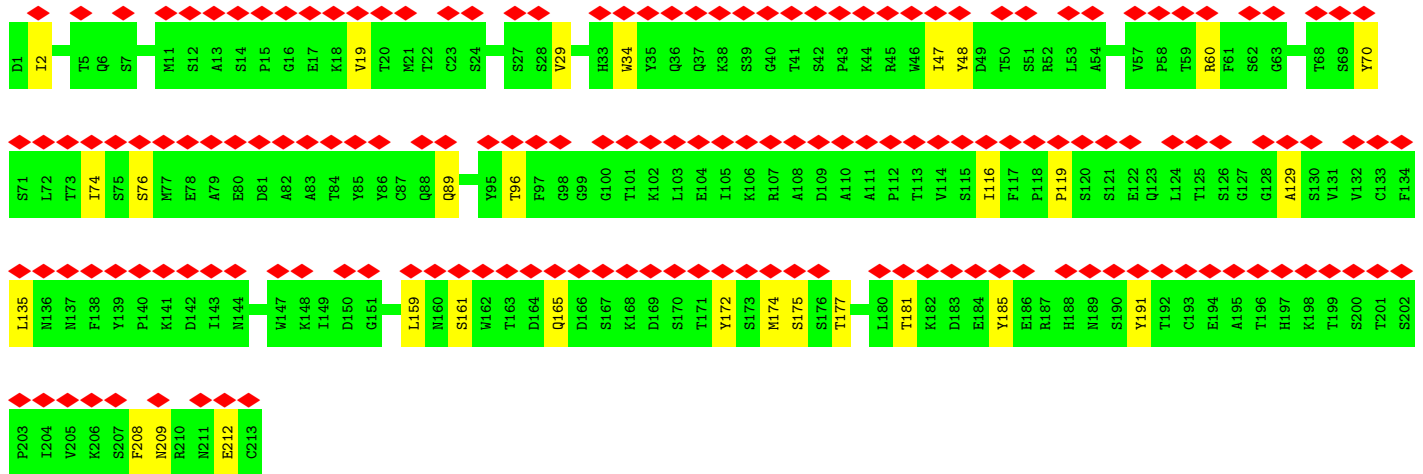
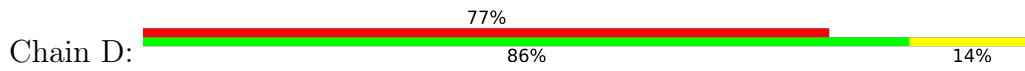




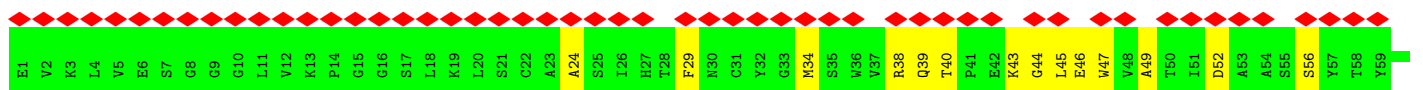
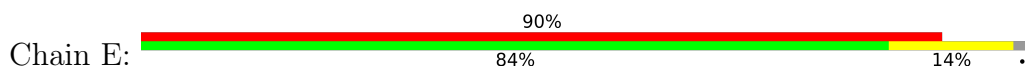
• Molecule 3: VP3



• Molecule 4: FAB Light Chain



• Molecule 5: FAB Heavy Chain



D62	S63	V64	K65	G66	R67	F68	I70	S71	R72	D73	N74	A75	K76	N77	T78	L79	Y80	L81	Q82	M83	S84	S85	L86	R87	S88	G89	D90	T91	A92	M93	Y94	Y95	C96	A97	R98	R99	D100	N101	T102	T103	A104	Q105	Y106	Y107	F108	D109	Y110	W111	G112	Q113	G114	T115	T116	L117	T118	V119	S120	S121	
P122	K123	T124	T125	P126	P127	S128	V129	Y130	P131	L132	A133	P134	A135	SER	ALA	SER	THR	A140	A141	S142	M143	V144	T145	L146	G147	C148	L149	V150	K151	G152	Y153	F154	P155	E156	P157	V158	T159	V160	T161	W162	N163	S164	G165	S166	L167	S168	S169	G170	V171	H172	T173	F174	P175	A176	V177	L178	Q179	S180	D181
L182	Y183	T184	L185	S186	S187	S188	V189	T190	V191	P192	S193	S194	T195	W196	P197	S198	E199	T200	V201	T202	C203	N204	V205	A206	H207	P208	A209	S210	S211	T212	K213	V214	D215	K216	K217	I218	V219	P220	R221																				

4 Experimental information

Property	Value	Source
EM reconstruction method	SINGLE PARTICLE	Depositor
Imposed symmetry	POINT, Not provided	
Number of particles used	16743	Depositor
Resolution determination method	FSC 0.143 CUT-OFF	Depositor
CTF correction method	NONE	Depositor
Microscope	FEI TITAN KRIOS	Depositor
Voltage (kV)	300	Depositor
Electron dose ($e^-/\text{\AA}^2$)	1.3	Depositor
Minimum defocus (nm)	Not provided	
Maximum defocus (nm)	Not provided	
Magnification	Not provided	
Image detector	GATAN K2 BASE (4k x 4k)	Depositor
Maximum map value	0.482	Depositor
Minimum map value	-0.291	Depositor
Average map value	0.000	Depositor
Map value standard deviation	0.020	Depositor
Recommended contour level	0.035	Depositor
Map size (\AA)	648.0, 648.0, 648.0	wwPDB
Map dimensions	480, 480, 480	wwPDB
Map angles ($^\circ$)	90.0, 90.0, 90.0	wwPDB
Pixel spacing (\AA)	1.35, 1.35, 1.35	Depositor

5 Model quality [i](#)

5.1 Standard geometry [i](#)

The Z score for a bond length (or angle) is the number of standard deviations the observed value is removed from the expected value. A bond length (or angle) with $|Z| > 5$ is considered an outlier worth inspection. RMSZ is the root-mean-square of all Z scores of the bond lengths (or angles).

Mol	Chain	Bond lengths		Bond angles	
		RMSZ	# Z >5	RMSZ	# Z >5
1	A	0.27	0/2087	0.53	0/2848
2	B	0.28	0/1752	0.53	0/2387
3	C	0.29	0/2007	0.55	1/2733 (0.0%)
4	D	0.28	0/1681	0.54	0/2285
5	E	0.28	0/1685	0.55	0/2305
All	All	0.28	0/9212	0.54	1/12558 (0.0%)

Chiral center outliers are detected by calculating the chiral volume of a chiral center and verifying if the center is modelled as a planar moiety or with the opposite hand. A planarity outlier is detected by checking planarity of atoms in a peptide group, atoms in a mainchain group or atoms of a sidechain that are expected to be planar.

Mol	Chain	#Chirality outliers	#Planarity outliers
4	D	0	1
5	E	0	1
All	All	0	2

There are no bond length outliers.

All (1) bond angle outliers are listed below:

Mol	Chain	Res	Type	Atoms	Z	Observed(°)	Ideal(°)
3	C	141	LEU	CA-CB-CG	5.53	128.01	115.30

There are no chirality outliers.

All (2) planarity outliers are listed below:

Mol	Chain	Res	Type	Group
4	D	48	TYR	Peptide
5	E	121	SER	Peptide

5.2 Too-close contacts

In the following table, the Non-H and H(model) columns list the number of non-hydrogen atoms and hydrogen atoms in the chain respectively. The H(added) column lists the number of hydrogen atoms added and optimized by MolProbity. The Clashes column lists the number of clashes within the asymmetric unit, whereas Symm-Clashes lists symmetry-related clashes.

Mol	Chain	Non-H	H(model)	H(added)	Clashes	Symm-Clashes
1	A	2032	0	1955	17	0
2	B	1708	0	1692	7	0
3	C	1956	0	1911	17	0
4	D	1641	0	1559	15	0
5	E	1641	0	1601	16	0
All	All	8978	0	8718	61	0

The all-atom clashscore is defined as the number of clashes found per 1000 atoms (including hydrogen atoms). The all-atom clashscore for this structure is 3.

All (61) close contacts within the same asymmetric unit are listed below, sorted by their clash magnitude.

Atom-1	Atom-2	Interatomic distance (Å)	Clash overlap (Å)
3:C:118:ASP:HB2	3:C:225:TYR:HB2	1.74	0.69
5:E:39:GLN:HB3	5:E:93:MET:HB3	1.76	0.66
1:A:65:PRO:HB3	3:C:170:ARG:HE	1.60	0.66
5:E:91:THR:HG23	5:E:118:THR:HA	1.79	0.64
4:D:34:TRP:HB2	4:D:47:ILE:HB	1.81	0.62
4:D:89:GLN:HE21	4:D:96:THR:H	1.48	0.61
4:D:161:SER:HB3	4:D:175:SER:HB3	1.84	0.57
1:A:56:GLU:OE2	3:C:120:GLN:NE2	2.39	0.56
2:B:69:LEU:H	2:B:72:HIS:HD2	1.53	0.55
5:E:29:PHE:O	5:E:72:ARG:NH1	2.40	0.55
4:D:185:TYR:O	4:D:191:TYR:OH	2.26	0.54
4:D:19:VAL:HB	4:D:74:ILE:HB	1.90	0.54
3:C:121:VAL:HG12	3:C:222:VAL:HG22	1.90	0.54
2:B:191:ASN:OD1	3:C:221:ARG:NH2	2.40	0.53
1:A:195:THR:O	3:C:13:ASN:ND2	2.40	0.53
1:A:110:PRO:HD3	1:A:169:PRO:HB3	1.91	0.53
4:D:2:ILE:HG23	4:D:89:GLN:HE22	1.73	0.53
1:A:112:THR:HG22	1:A:114:SER:H	1.74	0.52
5:E:24:ALA:HB3	5:E:77:ASN:HB3	1.92	0.52
4:D:119:PRO:HG2	4:D:129:ALA:HB1	1.93	0.51
5:E:69:THR:HB	5:E:82:GLN:HB3	1.93	0.51
3:C:63:GLN:NE2	3:C:223:ASN:OD1	2.45	0.49

Continued on next page...

Continued from previous page...

Atom-1	Atom-2	Interatomic distance (Å)	Clash overlap (Å)
2:B:120:GLN:HG2	2:B:192:ILE:HG22	1.95	0.48
5:E:38:ARG:NH1	5:E:46:GLU:OE1	2.47	0.47
4:D:116:ILE:HG12	4:D:208:PHE:HE1	1.79	0.47
3:C:143:ASP:OD2	5:E:56:SER:OG	2.32	0.47
5:E:52:ASP:O	5:E:72:ARG:NH2	2.48	0.47
4:D:159:LEU:HB2	4:D:177:THR:HB	1.96	0.47
3:C:87:GLN:HA	3:C:243:VAL:HG13	1.96	0.46
5:E:40:THR:OG1	5:E:43:LYS:O	2.25	0.46
1:A:197:ASN:HD22	3:C:15:VAL:HG22	1.80	0.46
4:D:135:LEU:HB2	4:D:174:MET:HB3	1.98	0.45
4:D:29:VAL:O	4:D:70:TYR:OH	2.31	0.45
2:B:137:SER:HB2	3:C:98:ILE:HG22	1.99	0.45
5:E:44:GLY:HA2	5:E:45:LEU:HA	1.78	0.44
4:D:209:ASN:HB2	4:D:212:GLU:HB2	1.98	0.44
1:A:211:VAL:HG11	1:A:226:PHE:HB3	2.00	0.44
3:C:132:LEU:HB3	3:C:205:TYR:HB2	2.00	0.43
1:A:128:ARG:HH12	1:A:270:LEU:HD12	1.83	0.43
1:A:182:LYS:NZ	1:A:232:GLN:OE1	2.42	0.43
1:A:254:GLN:HE21	3:C:36:TRP:H	1.66	0.43
3:C:31:LEU:HD23	3:C:32:ASP:HB2	2.01	0.43
1:A:236:TYR:HA	1:A:237:ASN:HA	1.81	0.43
5:E:34:MET:HB3	5:E:79:LEU:HD11	2.00	0.42
1:A:261:ARG:NH1	2:B:132:ASP:O	2.44	0.42
2:B:69:LEU:H	2:B:72:HIS:CD2	2.36	0.42
1:A:145:ILE:HD11	1:A:198:ILE:HD13	2.01	0.42
5:E:170:GLY:HA3	5:E:190:THR:HB	2.01	0.42
4:D:60:ARG:NH1	4:D:76:SER:O	2.53	0.42
5:E:146:LEU:HD12	5:E:191:VAL:HG21	2.02	0.42
1:A:125:SER:HB2	3:C:238:TYR:CZ	2.55	0.41
2:B:192:ILE:HB	2:B:196:THR:HB	2.02	0.41
5:E:195:THR:O	5:E:199:GLU:N	2.54	0.41
4:D:181:THR:O	4:D:185:TYR:N	2.51	0.41
5:E:83:MET:HB3	5:E:86:LEU:HD21	2.02	0.41
1:A:72:LYS:HA	1:A:73:PRO:HD3	1.96	0.41
4:D:165:GLN:HB2	4:D:172:TYR:HE1	1.85	0.41
5:E:47:TRP:NE1	5:E:49:ALA:O	2.54	0.41
1:A:203:PRO:HD3	3:C:29:PHE:HB2	2.03	0.40
1:A:236:TYR:CD1	1:A:237:ASN:HB3	2.57	0.40
3:C:127:HIS:HB3	3:C:210:LEU:HD11	2.02	0.40

There are no symmetry-related clashes.

5.3 Torsion angles [i](#)

5.3.1 Protein backbone [i](#)

In the following table, the Percentiles column shows the percent Ramachandran outliers of the chain as a percentile score with respect to all PDB entries followed by that with respect to all EM entries.

The Analysed column shows the number of residues for which the backbone conformation was analysed, and the total number of residues.

Mol	Chain	Analysed	Favoured	Allowed	Outliers	Percentiles	
1	A	256/278 (92%)	245 (96%)	11 (4%)	0	100	100
2	B	214/222 (96%)	203 (95%)	11 (5%)	0	100	100
3	C	244/246 (99%)	236 (97%)	8 (3%)	0	100	100
4	D	211/213 (99%)	198 (94%)	13 (6%)	0	100	100
5	E	213/221 (96%)	201 (94%)	11 (5%)	1 (0%)	29	60
All	All	1138/1180 (96%)	1083 (95%)	54 (5%)	1 (0%)	54	81

All (1) Ramachandran outliers are listed below:

Mol	Chain	Res	Type
5	E	122	PRO

5.3.2 Protein sidechains [i](#)

In the following table, the Percentiles column shows the percent sidechain outliers of the chain as a percentile score with respect to all PDB entries followed by that with respect to all EM entries.

The Analysed column shows the number of residues for which the sidechain conformation was analysed, and the total number of residues.

Mol	Chain	Analysed	Rotameric	Outliers	Percentiles	
1	A	227/242 (94%)	227 (100%)	0	100	100
2	B	188/194 (97%)	188 (100%)	0	100	100
3	C	217/217 (100%)	217 (100%)	0	100	100
4	D	186/187 (100%)	186 (100%)	0	100	100
5	E	185/189 (98%)	185 (100%)	0	100	100
All	All	1003/1029 (98%)	1003 (100%)	0	100	100

There are no protein residues with a non-rotameric sidechain to report.

Sometimes sidechains can be flipped to improve hydrogen bonding and reduce clashes. All (8) such sidechains are listed below:

Mol	Chain	Res	Type
1	A	254	GLN
1	A	265	ASN
2	B	72	HIS
2	B	76	HIS
2	B	111	GLN
3	C	87	GLN
3	C	95	GLN
4	D	89	GLN

5.3.3 RNA [i](#)

There are no RNA molecules in this entry.

5.4 Non-standard residues in protein, DNA, RNA chains [i](#)

There are no non-standard protein/DNA/RNA residues in this entry.

5.5 Carbohydrates [i](#)

There are no monosaccharides in this entry.

5.6 Ligand geometry [i](#)

There are no ligands in this entry.

5.7 Other polymers [i](#)

There are no such residues in this entry.

5.8 Polymer linkage issues [i](#)

There are no chain breaks in this entry.

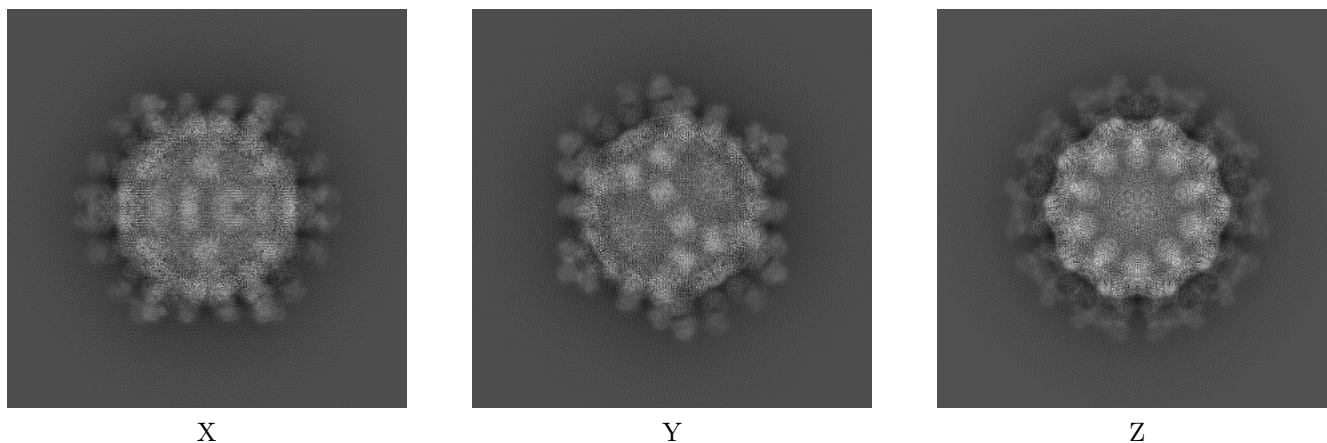
6 Map visualisation [i](#)

This section contains visualisations of the EMDB entry EMD-9829. These allow visual inspection of the internal detail of the map and identification of artifacts.

No raw map or half-maps were deposited for this entry and therefore no images, graphs, etc. pertaining to the raw map can be shown.

6.1 Orthogonal projections [i](#)

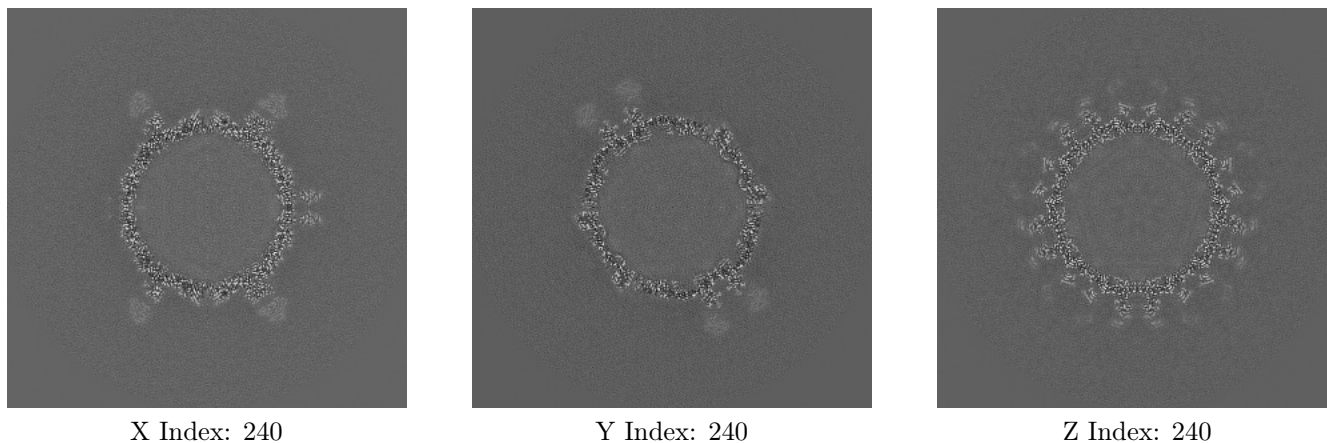
6.1.1 Primary map



The images above show the map projected in three orthogonal directions.

6.2 Central slices [i](#)

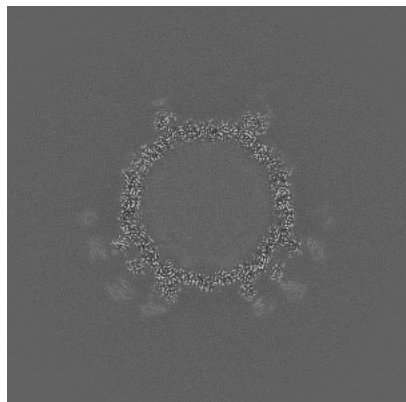
6.2.1 Primary map



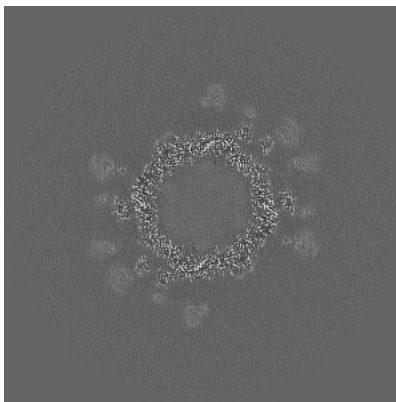
The images above show central slices of the map in three orthogonal directions.

6.3 Largest variance slices [i](#)

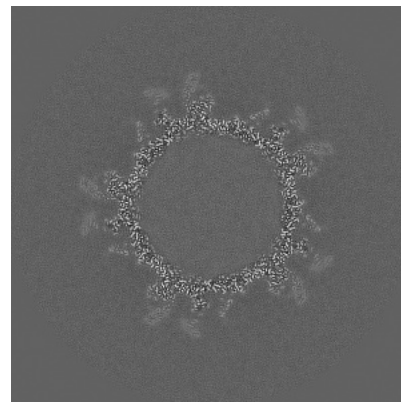
6.3.1 Primary map



X Index: 276



Y Index: 173

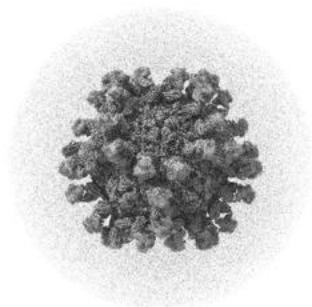


Z Index: 249

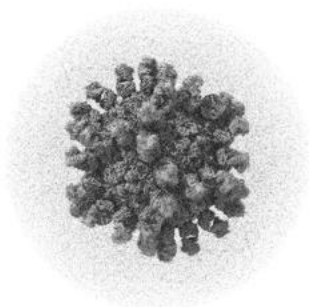
The images above show the largest variance slices of the map in three orthogonal directions.

6.4 Orthogonal surface views [i](#)

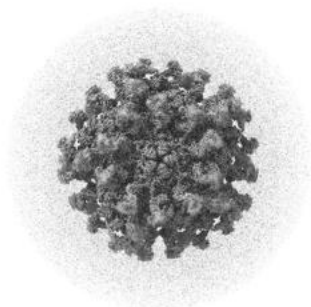
6.4.1 Primary map



X



Y



Z

The images above show the 3D surface view of the map at the recommended contour level 0.035. These images, in conjunction with the slice images, may facilitate assessment of whether an appropriate contour level has been provided.

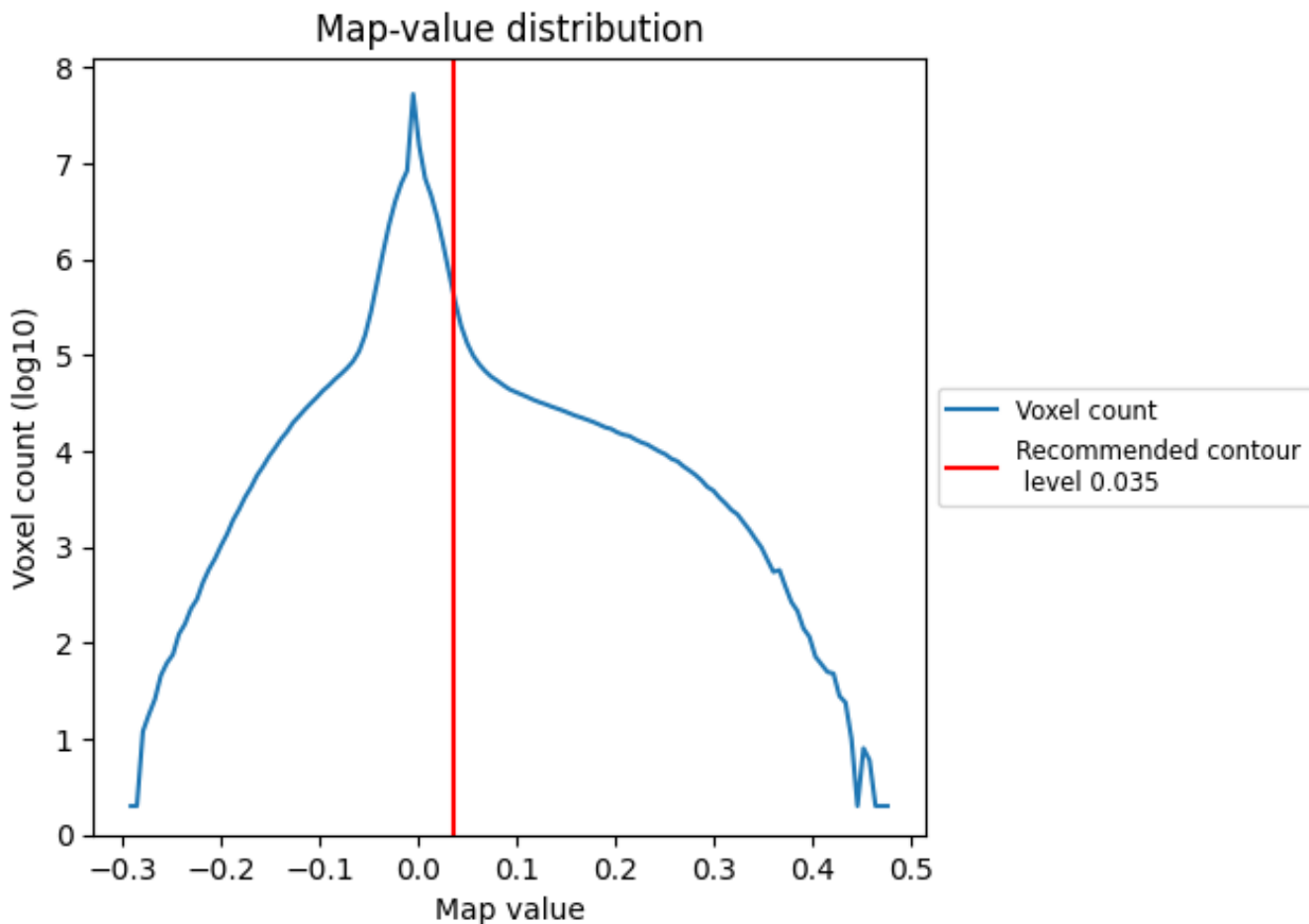
6.5 Mask visualisation

This section was not generated. No masks/segmentation were deposited.

7 Map analysis [i](#)

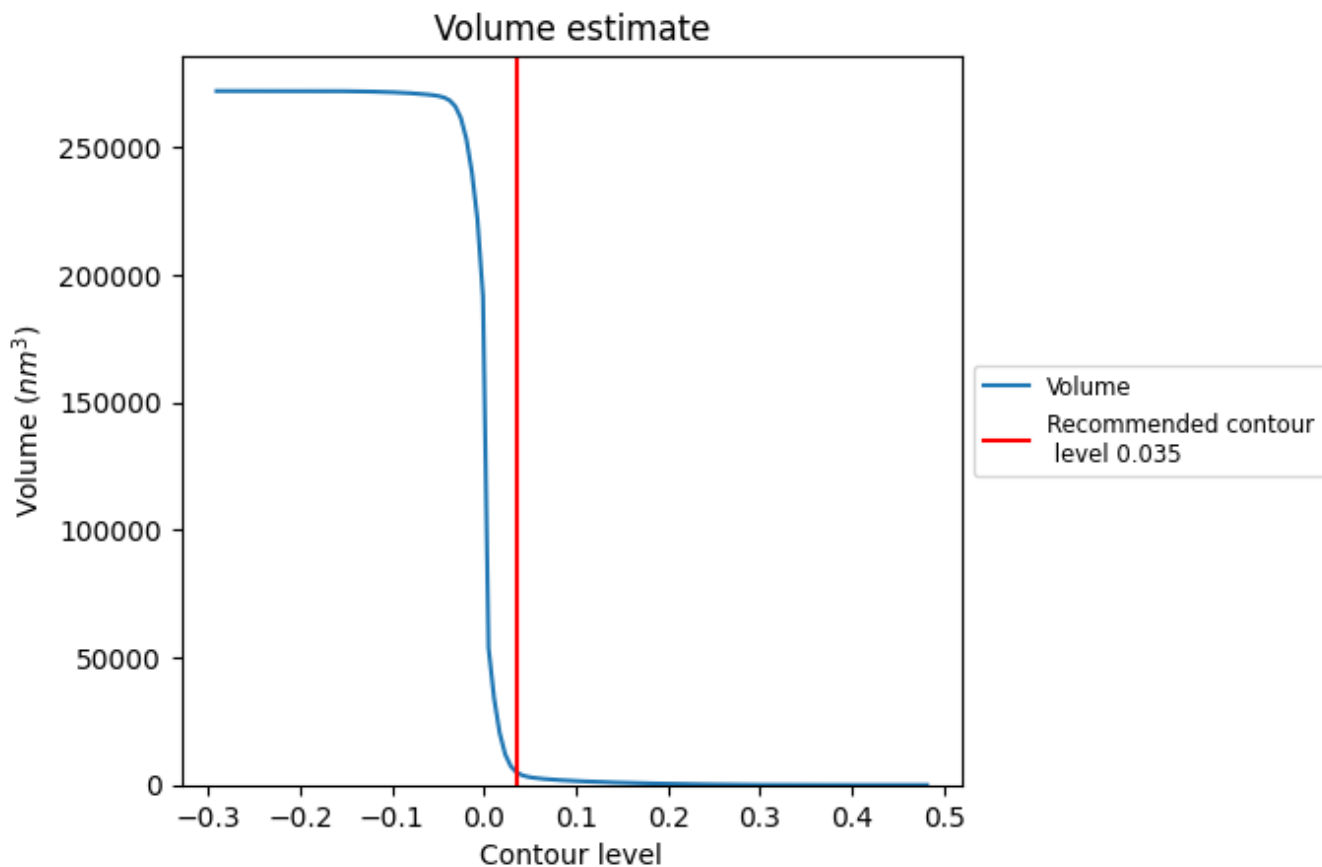
This section contains the results of statistical analysis of the map.

7.1 Map-value distribution [i](#)



The map-value distribution is plotted in 128 intervals along the x-axis. The y-axis is logarithmic. A spike in this graph at zero usually indicates that the volume has been masked.

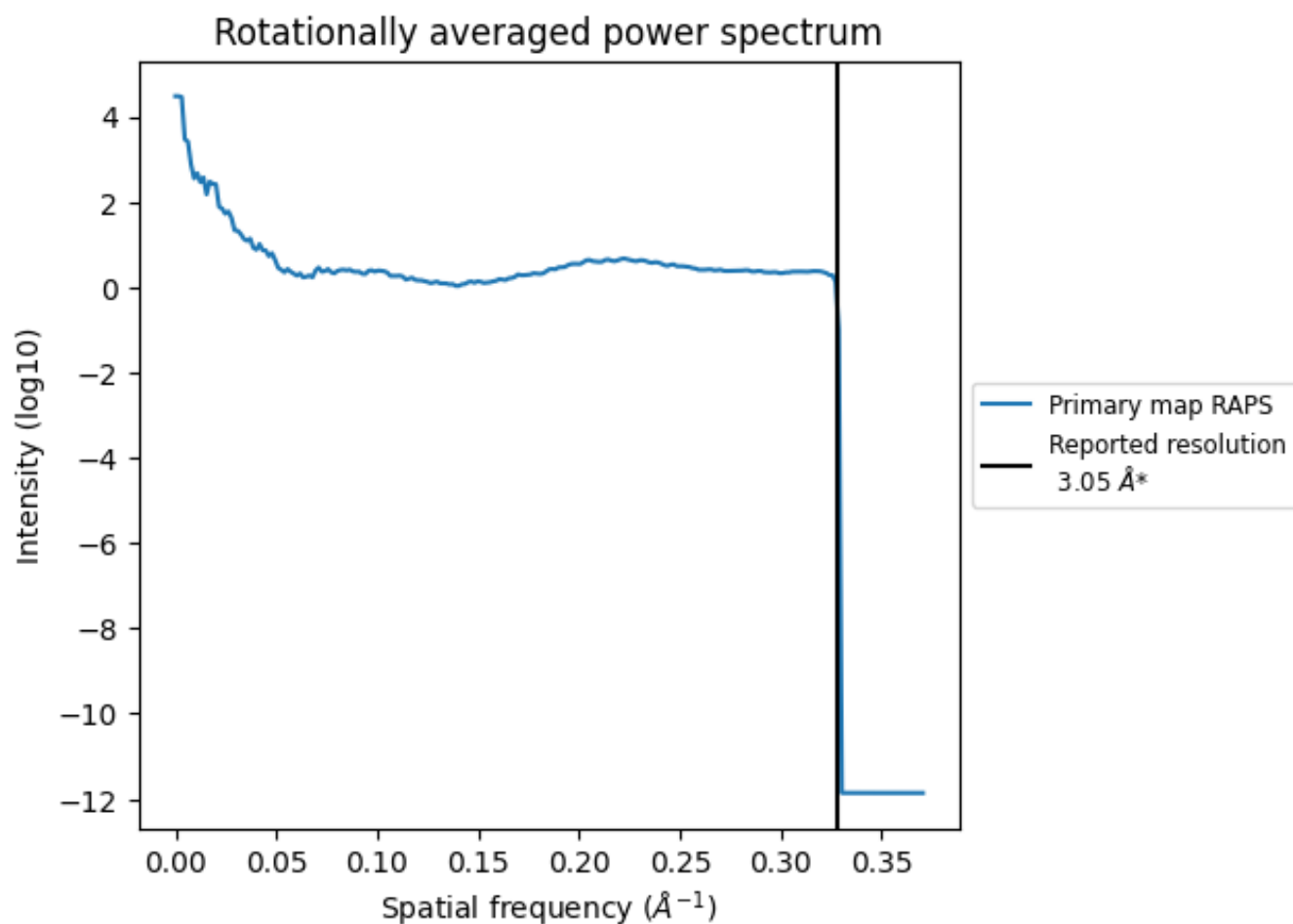
7.2 Volume estimate [i](#)



The volume at the recommended contour level is 5014 nm^3 ; this corresponds to an approximate mass of 4530 kDa.

The volume estimate graph shows how the enclosed volume varies with the contour level. The recommended contour level is shown as a vertical line and the intersection between the line and the curve gives the volume of the enclosed surface at the given level.

7.3 Rotationally averaged power spectrum [\(i\)](#)



*Reported resolution corresponds to spatial frequency of 0.328 Å⁻¹

8 Fourier-Shell correlation

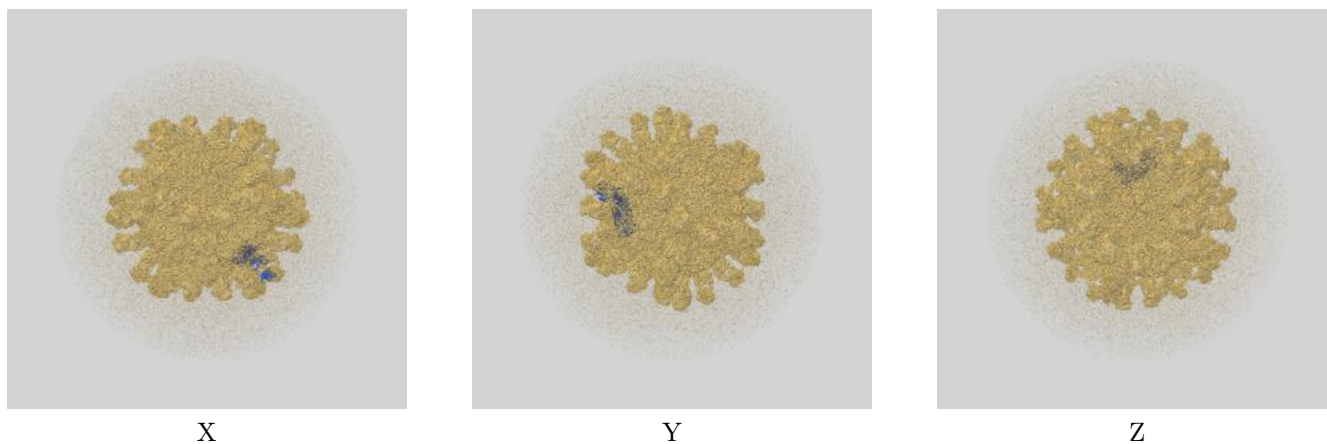
This section was not generated. No FSC curve or half-maps provided.

9 Map-model fit [i](#)

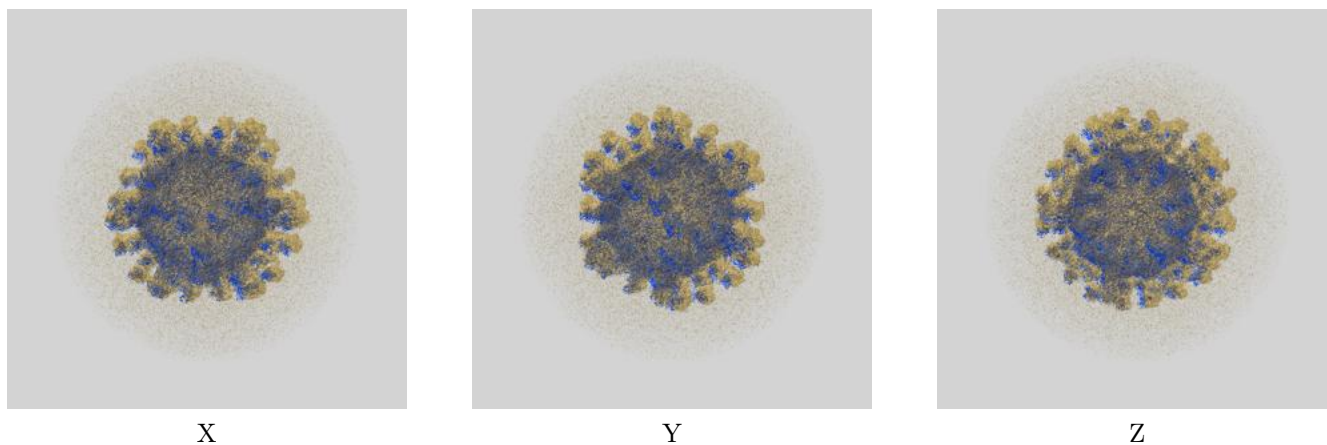
This section contains information regarding the fit between EMDB map EMD-9829 and PDB model 6JHS. Per-residue inclusion information can be found in section 3 on page 4.

9.1 Map-model overlays

9.1.1 Map-model overlay [i](#)

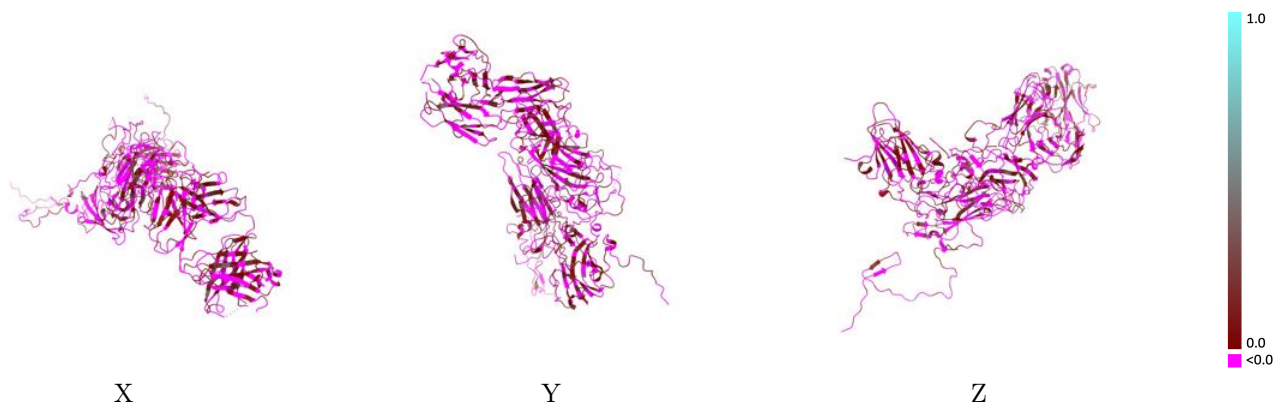


9.1.2 Map-model assembly overlay [i](#)



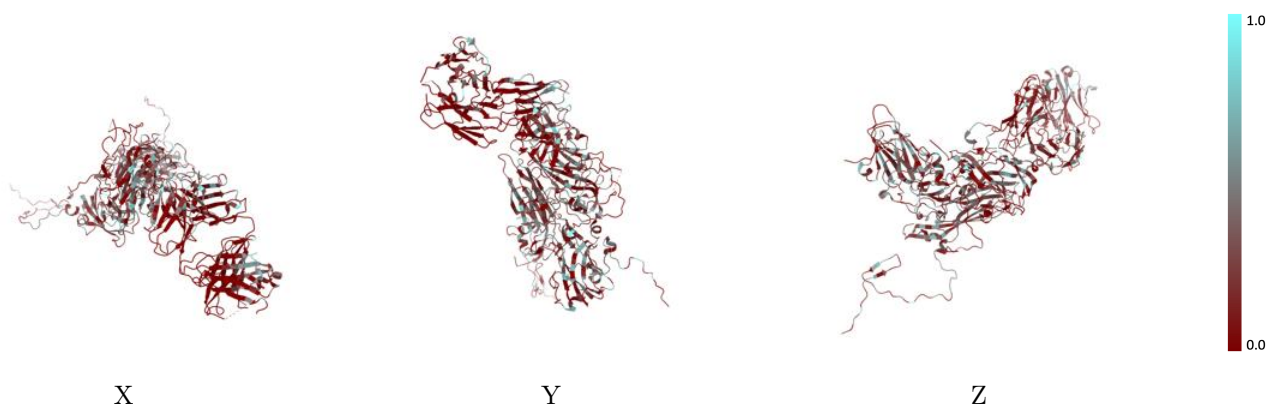
The images above show the 3D surface view of the map at the recommended contour level 0.035 at 50% transparency in yellow overlaid with a ribbon representation of the model coloured in blue. These images allow for the visual assessment of the quality of fit between the atomic model and the map.

9.2 Q-score mapped to coordinate model [i](#)



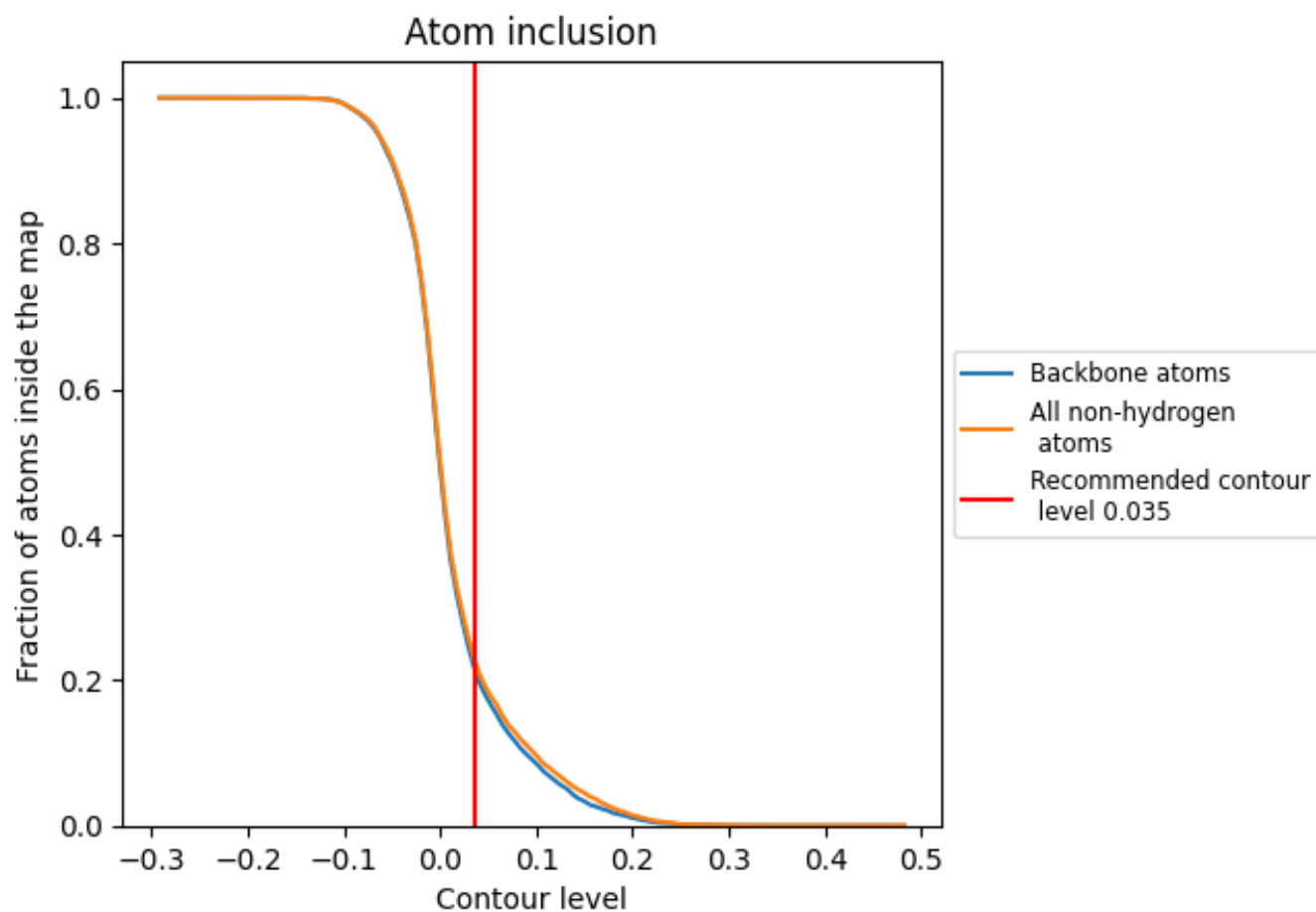
The images above show the model with each residue coloured according to its Q-score. This shows their resolvability in the map with higher Q-score values reflecting better resolvability. Please note: Q-score is calculating the resolvability of atoms, and thus high values are only expected at resolutions at which atoms can be resolved. Low Q-score values may therefore be expected for many entries.

9.3 Atom inclusion mapped to coordinate model [i](#)



The images above show the model with each residue coloured according to its atom inclusion. This shows to what extent they are inside the map at the recommended contour level (0.035).













9.4 Atom inclusion [i](#)



At the recommended contour level, 22% of all backbone atoms, 23% of all non-hydrogen atoms, are inside the map.

9.5 Map-model fit summary

The table lists the average atom inclusion at the recommended contour level (0.035) and Q-score for the entire model and for each chain.

Chain	Atom inclusion	Q-score
All	 0.2309	 -0.0150
A	 0.2384	 0.0080
B	 0.2996	 -0.0330
C	 0.3115	 -0.0200
D	 0.1856	 -0.0170
E	 0.0993	 -0.0140

