



# wwPDB X-ray Structure Validation Summary Report ⓘ

Aug 6, 2023 – 02:36 PM EDT

PDB ID : 1JH0  
Title : Photosynthetic Reaction Center Mutant With Glu L 205 Replaced to Leu  
Authors : Camara-Artigas, A.; Magee, C.L.; Williams, J.C.; Allen, J.P.  
Deposited on : 2001-06-27  
Resolution : 3.50 Å(reported)

This is a wwPDB X-ray Structure Validation Summary Report for a publicly released PDB entry.

We welcome your comments at [validation@mail.wwpdb.org](mailto:validation@mail.wwpdb.org)

A user guide is available at

<https://www.wwpdb.org/validation/2017/XrayValidationReportHelp>

with specific help available everywhere you see the ⓘ symbol.

The types of validation reports are described at

<http://www.wwpdb.org/validation/2017/FAQs#types>.

---

The following versions of software and data (see [references ⓘ](#)) were used in the production of this report:

MolProbity : 4.02b-467  
Mogul : 1.8.5 (274361), CSD as541be (2020)  
Xtrriage (Phenix) : **NOT EXECUTED**  
EDS : **NOT EXECUTED**  
buster-report : 1.1.7 (2018)  
Percentile statistics : 20191225.v01 (using entries in the PDB archive December 25th 2019)  
Ideal geometry (proteins) : Engh & Huber (2001)  
Ideal geometry (DNA, RNA) : Parkinson et al. (1996)  
Validation Pipeline (wwPDB-VP) : 2.35

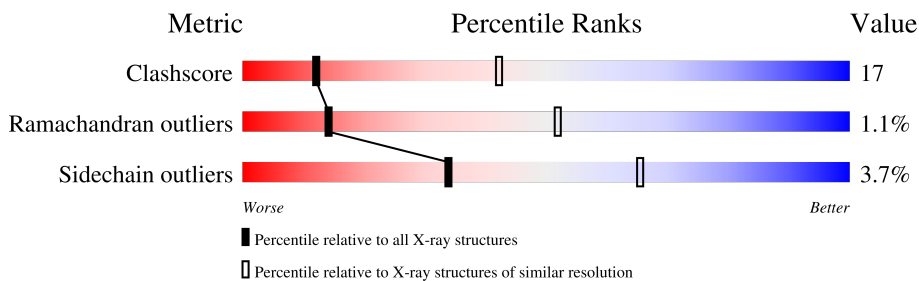
# 1 Overall quality at a glance

The following experimental techniques were used to determine the structure:

*X-RAY DIFFRACTION*

The reported resolution of this entry is 3.50 Å.

Percentile scores (ranging between 0-100) for global validation metrics of the entry are shown in the following graphic. The table shows the number of entries on which the scores are based.



Metric	Whole archive (#Entries)	Similar resolution (#Entries, resolution range(Å))
Clashscore	141614	1036 (3.58-3.42)
Ramachandran outliers	138981	1005 (3.58-3.42)
Sidechain outliers	138945	1006 (3.58-3.42)

The table below summarises the geometric issues observed across the polymeric chains and their fit to the electron density. The red, orange, yellow and green segments of the lower bar indicate the fraction of residues that contain outliers for  $\geq 3$ , 2, 1 and 0 types of geometric quality criteria respectively. A grey segment represents the fraction of residues that are not modelled. The numeric value for each fraction is indicated below the corresponding segment, with a dot representing fractions  $\leq 5\%$ .

Note EDS was not executed.

Mol	Chain	Length	Quality of chain
1	L	281	
2	M	307	
3	H	260	

The following table lists non-polymeric compounds, carbohydrate monomers and non-standard residues in protein, DNA, RNA chains that are outliers for geometric or electron-density-fit criteria:

Mol	Type	Chain	Res	Chirality	Geometry	Clashes	Electron density
8	SPO	M	859	-	X	-	-

## 2 Entry composition [i](#)

There are 9 unique types of molecules in this entry. The entry contains 7025 atoms, of which 0 are hydrogens and 0 are deuteriums.

In the tables below, the ZeroOcc column contains the number of atoms modelled with zero occupancy, the AltConf column contains the number of residues with at least one atom in alternate conformation and the Trace column contains the number of residues modelled with at most 2 atoms.

- Molecule 1 is a protein called Photosynthetic Reaction Center L subunit.

Mol	Chain	Residues	Atoms					ZeroOcc	AltConf	Trace
			Total	C	N	O	S			
1	L	280	2226	1506	354	358	8	0	0	0

There is a discrepancy between the modelled and reference sequences:

Chain	Residue	Modelled	Actual	Comment	Reference
L	205	LEU	GLU	engineered mutation	UNP P02954

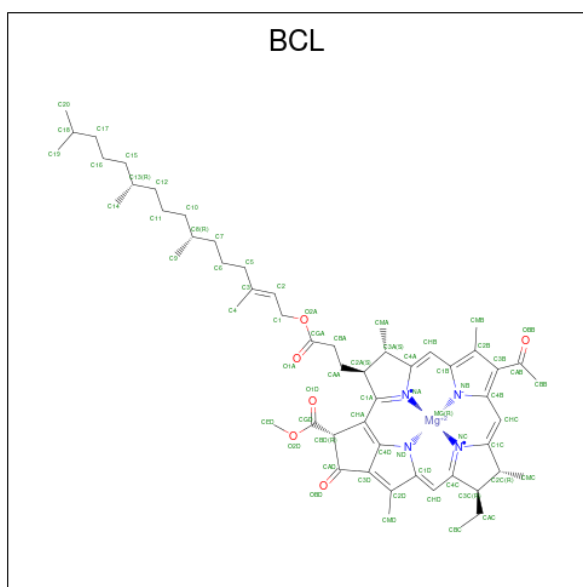
- Molecule 2 is a protein called Photosynthetic Reaction Center M subunit.

Mol	Chain	Residues	Atoms					ZeroOcc	AltConf	Trace
			Total	C	N	O	S			
2	M	301	2404	1605	393	396	10	0	0	0

- Molecule 3 is a protein called Photosynthetic Reaction Center H subunit.

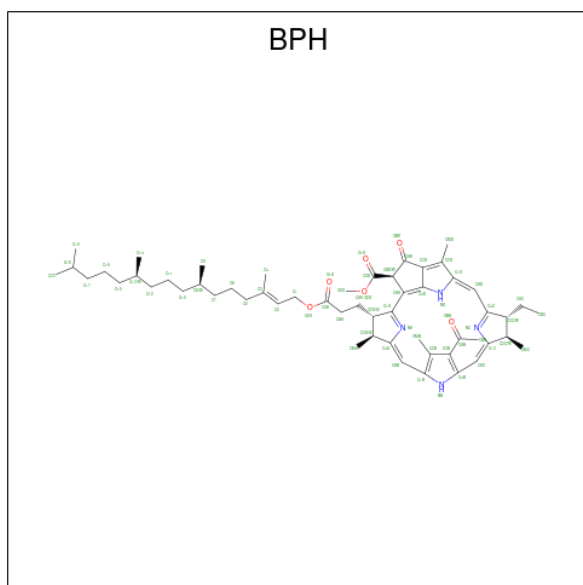
Mol	Chain	Residues	Atoms					ZeroOcc	AltConf	Trace
			Total	C	N	O	S			
3	H	238	1814	1160	311	334	9	0	0	0

- Molecule 4 is BACTERIOCHLOROPHYLL A (three-letter code: BCL) (formula: C<sub>55</sub>H<sub>74</sub>MgN<sub>4</sub>O<sub>6</sub>).



Mol	Chain	Residues	Atoms				ZeroOcc	AltConf	
			Total	C	Mg	N			O
4	L	1	Total	C	Mg	N	O	0	0
			66	55	1	4	6		
4	L	1	Total	C	Mg	N	O	0	0
			66	55	1	4	6		
4	M	1	Total	C	Mg	N	O	0	0
			66	55	1	4	6		
4	M	1	Total	C	Mg	N	O	0	0
			66	55	1	4	6		

- Molecule 5 is BACTERIOPHEOPHYTIN A (three-letter code: BPH) (formula:  $C_{55}H_{76}N_4O_6$ ).

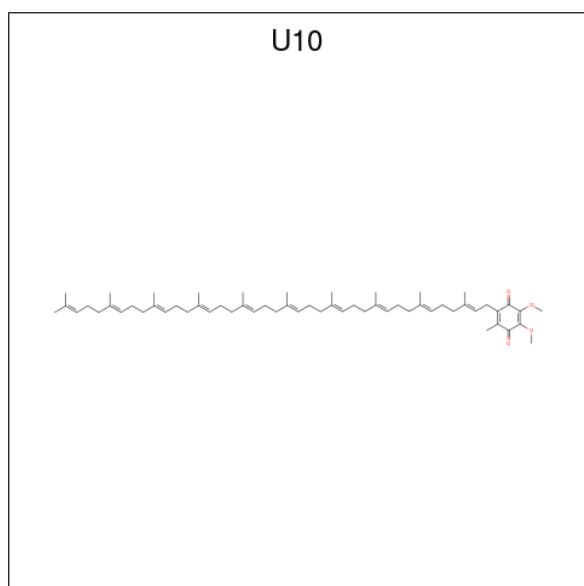


Mol	Chain	Residues	Atoms				ZeroOcc	AltConf
5	L	1	Total	C	N	O	0	0
			65	55	4	6		
5	M	1	Total	C	N	O	0	0
			65	55	4	6		

- Molecule 6 is FE (III) ION (three-letter code: FE) (formula: Fe).

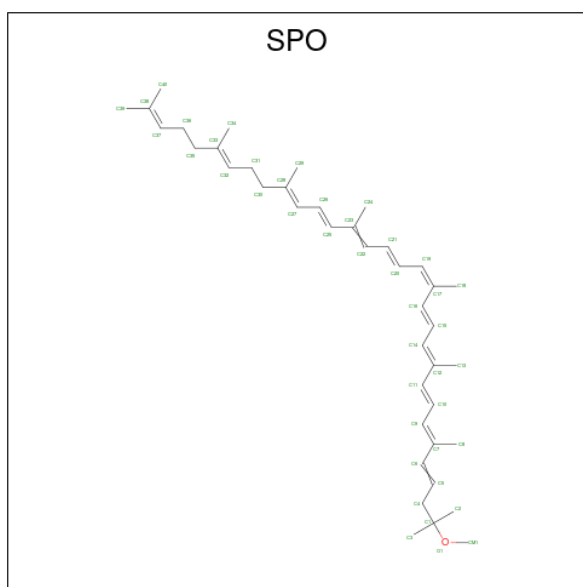
Mol	Chain	Residues	Atoms		ZeroOcc	AltConf
6	M	1	Total	Fe	0	0
			1	1		

- Molecule 7 is UBIQUINONE-10 (three-letter code: U10) (formula: C<sub>59</sub>H<sub>90</sub>O<sub>4</sub>).



Mol	Chain	Residues	Atoms			ZeroOcc	AltConf
7	M	1	Total	C	O	0	0
			48	44	4		

- Molecule 8 is SPHEROIDENE (three-letter code: SPO) (formula: C<sub>41</sub>H<sub>60</sub>O).



Mol	Chain	Residues	Atoms		ZeroOcc	AltConf
8	M	1	Total	C O	0	0
			42	41 1		

- Molecule 9 is water.

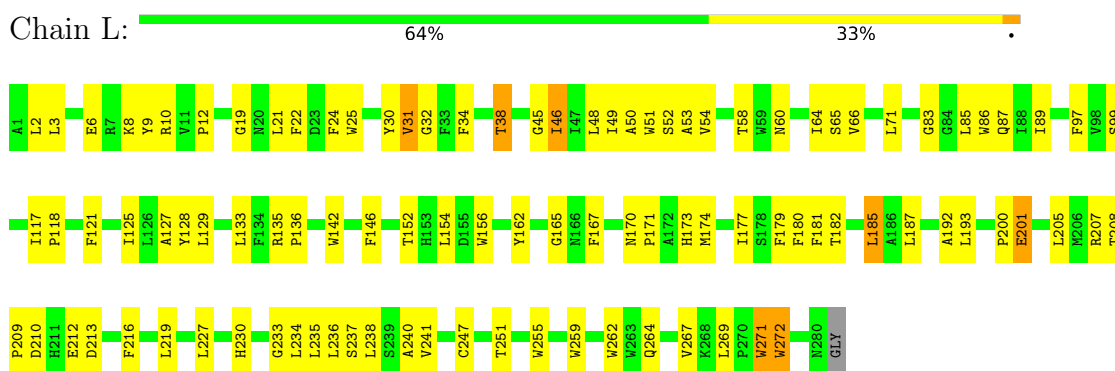
Mol	Chain	Residues	Atoms		ZeroOcc	AltConf
9	L	23	Total	O	0	0
			23	23		
9	M	45	Total	O	0	0
			45	45		
9	H	28	Total	O	0	0
			28	28		

### 3 Residue-property plots

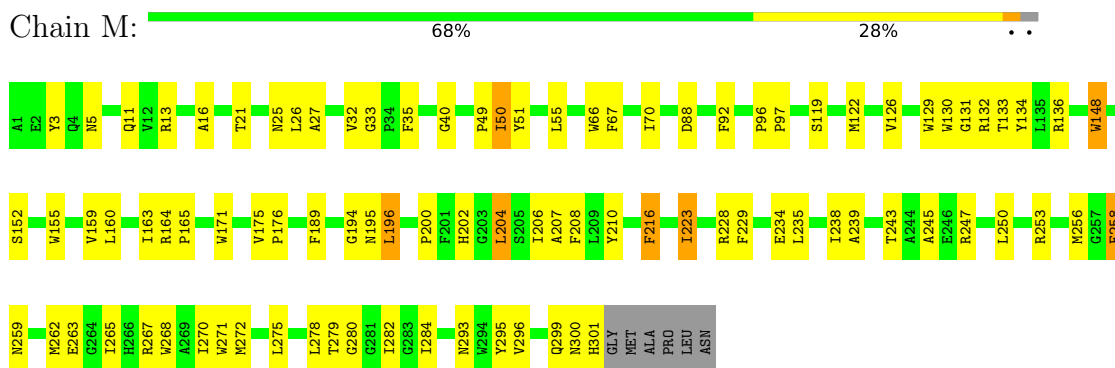
These plots are drawn for all protein, RNA, DNA and oligosaccharide chains in the entry. The first graphic for a chain summarises the proportions of the various outlier classes displayed in the second graphic. The second graphic shows the sequence view annotated by issues in geometry. Residues are color-coded according to the number of geometric quality criteria for which they contain at least one outlier: green = 0, yellow = 1, orange = 2 and red = 3 or more. Stretches of 2 or more consecutive residues without any outlier are shown as a green connector. Residues present in the sample, but not in the model, are shown in grey.

Note EDS was not executed.

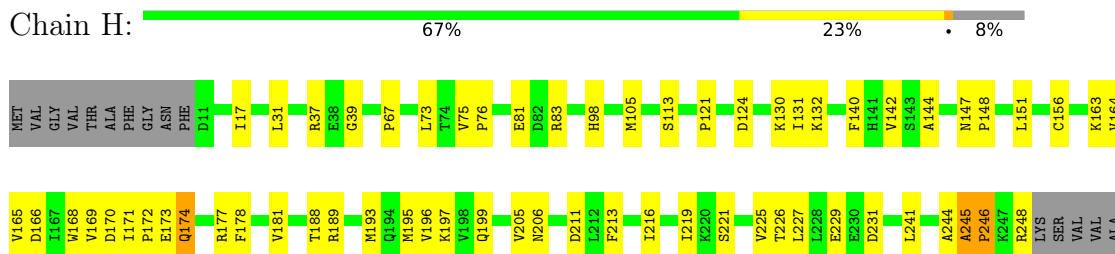
- Molecule 1: Photosynthetic Reaction Center L subunit



- Molecule 2: Photosynthetic Reaction Center M subunit



- Molecule 3: Photosynthetic Reaction Center H subunit



ALA  
MET  
LEU  
ALA  
GLU  
TYR  
ALA



## 4 Data and refinement statistics

Xtriage (Phenix) and EDS were not executed - this section is therefore incomplete.

Property	Value	Source
Space group	P 31 2 1	Depositor
Cell constants a, b, c, $\alpha$ , $\beta$ , $\gamma$	141.80Å 141.80Å 187.40Å 90.00° 90.00° 120.00°	Depositor
Resolution (Å)	29.90 – 3.50	Depositor
% Data completeness (in resolution range)	99.5 (29.90-3.50)	Depositor
$R_{merge}$	0.23	Depositor
$R_{sym}$	(Not available)	Depositor
Refinement program	CNS	Depositor
R, $R_{free}$	0.225 , 0.269	Depositor
Estimated twinning fraction	No twinning to report.	Xtriage
Total number of atoms	7025	wwPDB-VP
Average B, all atoms (Å <sup>2</sup> )	66.0	wwPDB-VP

## 5 Model quality

### 5.1 Standard geometry

Bond lengths and bond angles in the following residue types are not validated in this section: BPH, SPO, BCL, FE, U10

The Z score for a bond length (or angle) is the number of standard deviations the observed value is removed from the expected value. A bond length (or angle) with  $|Z| > 5$  is considered an outlier worth inspection. RMSZ is the root-mean-square of all Z scores of the bond lengths (or angles).

Mol	Chain	Bond lengths		Bond angles	
		RMSZ	# Z  >5	RMSZ	# Z  >5
1	L	0.44	0/2314	0.64	0/3169
2	M	0.45	0/2496	0.62	0/3408
3	H	0.44	0/1862	0.69	0/2534
All	All	0.45	0/6672	0.65	0/9111

There are no bond length outliers.

There are no bond angle outliers.

There are no chirality outliers.

There are no planarity outliers.

### 5.2 Too-close contacts

In the following table, the Non-H and H(model) columns list the number of non-hydrogen atoms and hydrogen atoms in the chain respectively. The H(added) column lists the number of hydrogen atoms added and optimized by MolProbity. The Clashes column lists the number of clashes within the asymmetric unit, whereas Symm-Clashes lists symmetry-related clashes.

Mol	Chain	Non-H	H(model)	H(added)	Clashes	Symm-Clashes
1	L	2226	0	2189	91	0
2	M	2404	0	2318	91	0
3	H	1814	0	1818	56	0
4	L	132	0	148	14	0
4	M	132	0	148	17	0
5	L	65	0	76	8	0
5	M	65	0	76	9	0
6	M	1	0	0	0	0
7	M	48	0	63	3	0
8	M	42	0	60	1	0

*Continued on next page...*

Continued from previous page...

Mol	Chain	Non-H	H(model)	H(added)	Clashes	Symm-Clashes
9	H	28	0	0	0	0
9	L	23	0	0	3	0
9	M	45	0	0	1	0
All	All	7025	0	6896	236	0

The all-atom clashscore is defined as the number of clashes found per 1000 atoms (including hydrogen atoms). The all-atom clashscore for this structure is 17.

The worst 5 of 236 close contacts within the same asymmetric unit are listed below, sorted by their clash magnitude.

Atom-1	Atom-2	Interatomic distance (Å)	Clash overlap (Å)
1:L:48:LEU:HB2	1:L:89:ILE:HD11	1.37	1.04
3:H:156:CYS:SG	3:H:248:ARG:HB2	2.13	0.88
1:L:97:PHE:HB3	1:L:125:ILE:HD12	1.59	0.83
1:L:58:THR:HG23	1:L:64:ILE:HD13	1.60	0.82
1:L:48:LEU:HB2	1:L:89:ILE:CD1	2.12	0.79

There are no symmetry-related clashes.

## 5.3 Torsion angles [i](#)

### 5.3.1 Protein backbone [i](#)

In the following table, the Percentiles column shows the percent Ramachandran outliers of the chain as a percentile score with respect to all X-ray entries followed by that with respect to entries of similar resolution.

The Analysed column shows the number of residues for which the backbone conformation was analysed, and the total number of residues.

Mol	Chain	Analysed	Favoured	Allowed	Outliers	Percentiles	
1	L	278/281 (99%)	246 (88%)	27 (10%)	5 (2%)	8	41
2	M	299/307 (97%)	271 (91%)	27 (9%)	1 (0%)	41	75
3	H	236/260 (91%)	223 (94%)	10 (4%)	3 (1%)	12	48
All	All	813/848 (96%)	740 (91%)	64 (8%)	9 (1%)	14	52

5 of 9 Ramachandran outliers are listed below:

Mol	Chain	Res	Type
3	H	245	ALA
1	L	201	GLU
1	L	237	SER
3	H	174	GLN
3	H	211	ASP

### 5.3.2 Protein sidechains [i](#)

In the following table, the Percentiles column shows the percent sidechain outliers of the chain as a percentile score with respect to all X-ray entries followed by that with respect to entries of similar resolution.

The Analysed column shows the number of residues for which the sidechain conformation was analysed, and the total number of residues.

Mol	Chain	Analysed	Rotameric	Outliers	Percentiles	
1	L	220/220 (100%)	208 (94%)	12 (6%)	21	54
2	M	236/240 (98%)	229 (97%)	7 (3%)	41	71
3	H	193/208 (93%)	188 (97%)	5 (3%)	46	74
All	All	649/668 (97%)	625 (96%)	24 (4%)	34	65

5 of 24 residues with a non-rotameric sidechain are listed below:

Mol	Chain	Res	Type
2	M	196	LEU
2	M	223	ILE
2	M	216	PHE
2	M	258	PHE
1	L	207	ARG

Sometimes sidechains can be flipped to improve hydrogen bonding and reduce clashes. 5 of 6 such sidechains are listed below:

Mol	Chain	Res	Type
2	M	259	ASN
2	M	299	GLN
3	H	129	ASN
2	M	4	GLN
1	L	173	HIS

### 5.3.3 RNA [i](#)

There are no RNA molecules in this entry.

## 5.4 Non-standard residues in protein, DNA, RNA chains [i](#)

There are no non-standard protein/DNA/RNA residues in this entry.

## 5.5 Carbohydrates [i](#)

There are no monosaccharides in this entry.

## 5.6 Ligand geometry [i](#)

Of 9 ligands modelled in this entry, 1 is monoatomic - leaving 8 for Mogul analysis.

In the following table, the Counts columns list the number of bonds (or angles) for which Mogul statistics could be retrieved, the number of bonds (or angles) that are observed in the model and the number of bonds (or angles) that are defined in the Chemical Component Dictionary. The Link column lists molecule types, if any, to which the group is linked. The Z score for a bond length (or angle) is the number of standard deviations the observed value is removed from the expected value. A bond length (or angle) with  $|Z| > 2$  is considered an outlier worth inspection. RMSZ is the root-mean-square of all Z scores of the bond lengths (or angles).

Mol	Type	Chain	Res	Link	Bond lengths			Bond angles		
					Counts	RMSZ	# Z  > 2	Counts	RMSZ	# Z  > 2
5	BPH	L	855	-	51,70,70	1.73	8 (15%)	52,101,101	2.05	11 (21%)
7	U10	M	857	-	48,48,63	2.35	12 (25%)	58,61,79	2.12	21 (36%)
8	SPO	M	859	-	40,41,41	3.58	25 (62%)	47,50,50	2.75	14 (29%)
4	BCL	M	852	-	58,74,74	1.54	11 (18%)	69,115,115	1.95	14 (20%)
4	BCL	M	850	-	58,74,74	2.69	9 (15%)	69,115,115	4.63	19 (27%)
5	BPH	M	854	-	51,70,70	1.76	9 (17%)	52,101,101	1.89	9 (17%)
4	BCL	L	851	-	58,74,74	1.53	9 (15%)	69,115,115	1.87	13 (18%)
4	BCL	L	853	-	58,74,74	1.66	8 (13%)	69,115,115	2.07	18 (26%)

In the following table, the Chirals column lists the number of chiral outliers, the number of chiral centers analysed, the number of these observed in the model and the number defined in the Chemical Component Dictionary. Similar counts are reported in the Torsion and Rings columns. '-' means no outliers of that kind were identified.

Mol	Type	Chain	Res	Link	Chirals	Torsions	Rings
5	BPH	L	855	-	-	7/37/105/105	0/5/6/6
7	U10	M	857	-	-	15/45/69/87	0/1/1/1
8	SPO	M	859	-	-	19/47/47/47	-
4	BCL	M	852	-	-	10/37/137/137	-
4	BCL	M	850	-	-	6/37/137/137	-
5	BPH	M	854	-	-	7/37/105/105	0/5/6/6
4	BCL	L	851	-	-	4/37/137/137	-
4	BCL	L	853	-	-	5/37/137/137	-

The worst 5 of 91 bond length outliers are listed below:

Mol	Chain	Res	Type	Atoms	Z	Observed(Å)	Ideal(Å)
4	M	850	BCL	C1B-NB	-13.93	1.22	1.35
7	M	857	U10	C6-C1	9.63	1.52	1.35
4	M	850	BCL	C3B-C2B	9.60	1.56	1.39
8	M	859	SPO	C15-C16	9.18	1.58	1.34
5	L	855	BPH	C3A-C2A	-7.76	1.47	1.54

The worst 5 of 119 bond angle outliers are listed below:

Mol	Chain	Res	Type	Atoms	Z	Observed(°)	Ideal(°)
4	M	850	BCL	OBB-CAB-C3B	25.41	165.09	119.99
4	M	850	BCL	OBB-CAB-CBB	-17.88	79.93	120.17
4	M	850	BCL	CBB-CAB-C3B	-11.85	85.16	120.34
8	M	859	SPO	C25-C23-C22	-11.12	101.87	118.94
4	M	850	BCL	C4B-C3B-CAB	9.18	144.85	127.13

There are no chirality outliers.

5 of 73 torsion outliers are listed below:

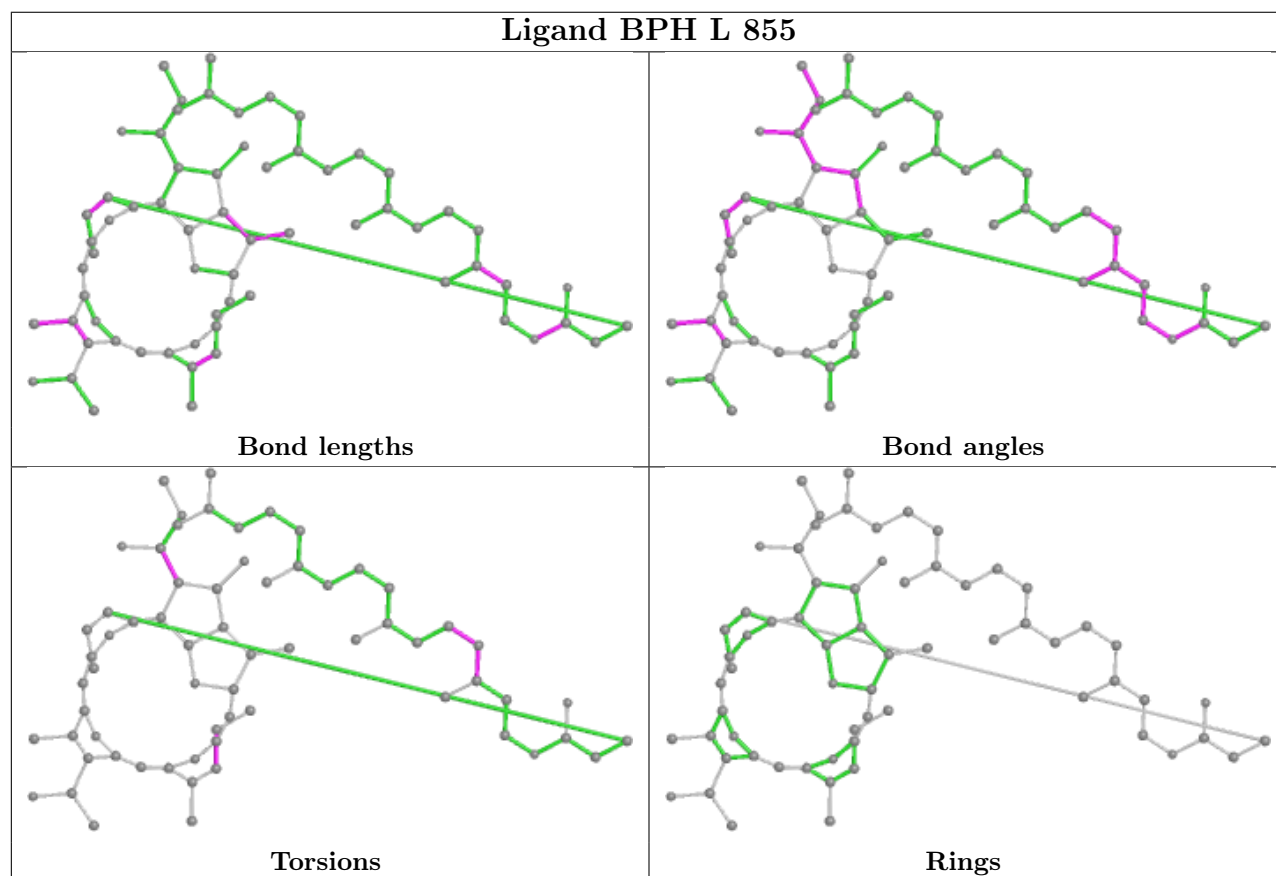
Mol	Chain	Res	Type	Atoms
4	L	851	BCL	C2C-C3C-CAC-CBC
4	L	851	BCL	C4C-C3C-CAC-CBC
4	M	852	BCL	C2C-C3C-CAC-CBC
4	M	852	BCL	C4C-C3C-CAC-CBC
4	M	852	BCL	C2-C3-C5-C6

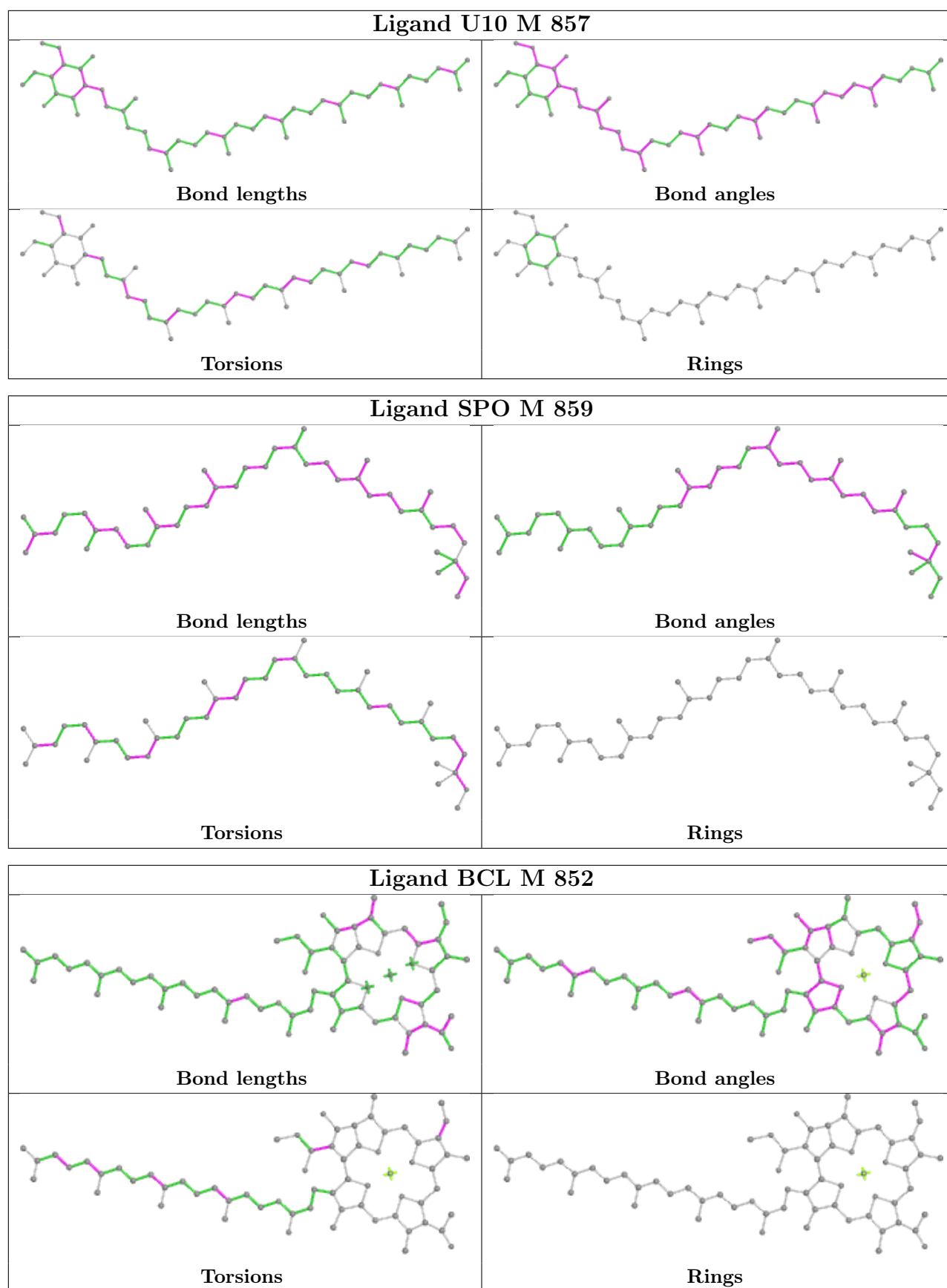
There are no ring outliers.

8 monomers are involved in 44 short contacts:

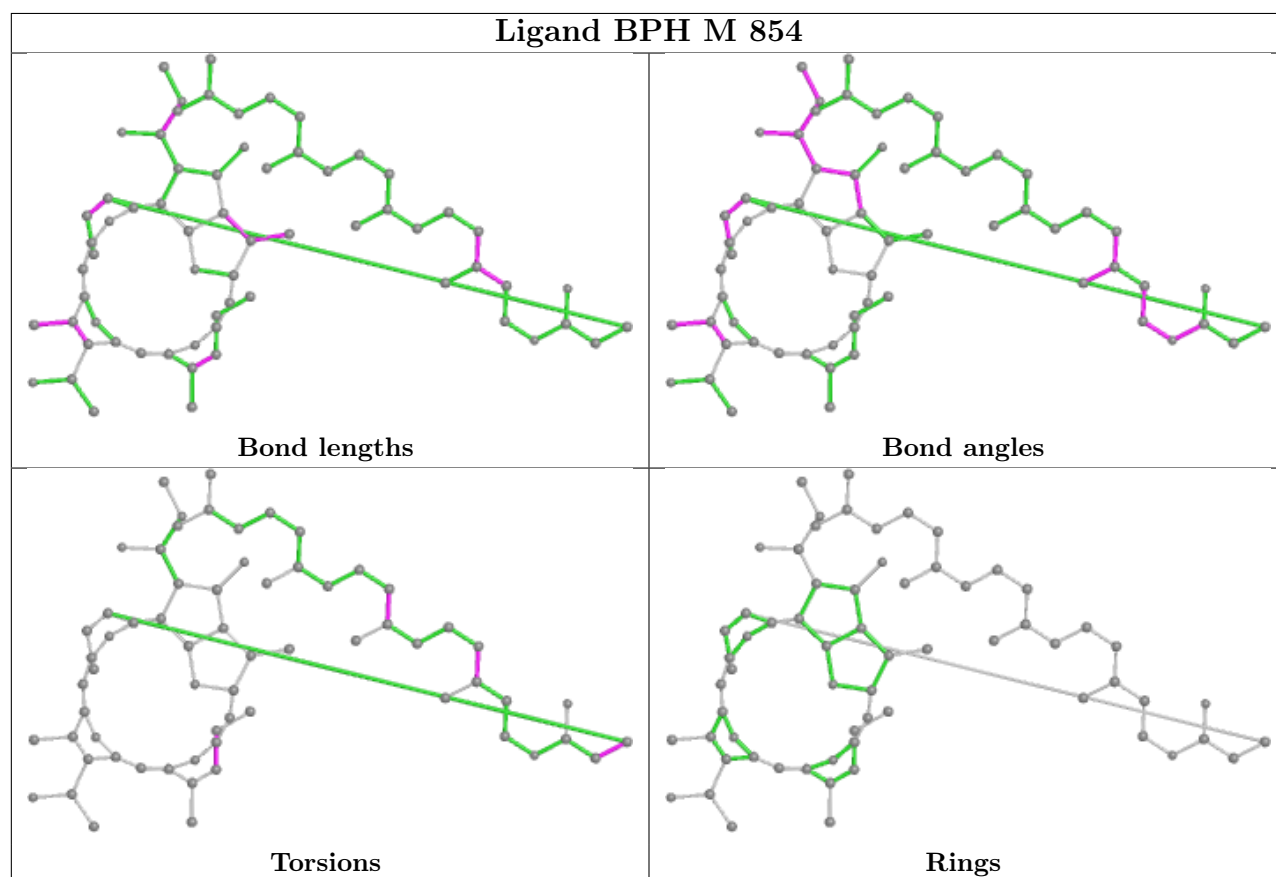
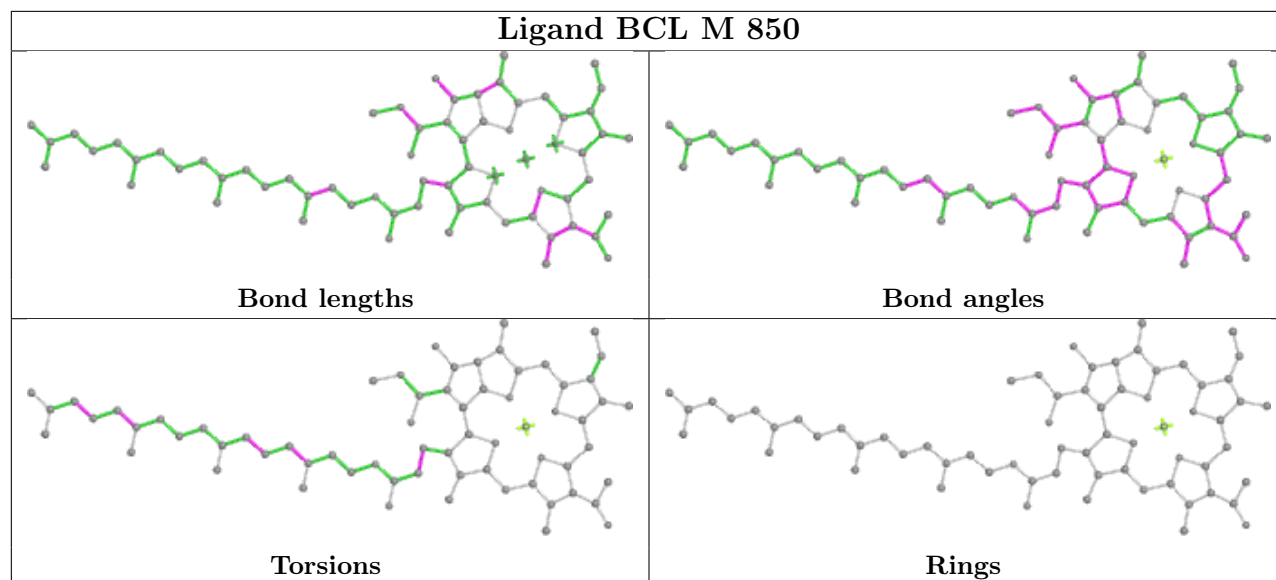
Mol	Chain	Res	Type	Clashes	Symm-Clashes
5	L	855	BPH	8	0
7	M	857	U10	3	0
8	M	859	SPO	1	0
4	M	852	BCL	6	0
4	M	850	BCL	11	0
5	M	854	BPH	9	0
4	L	851	BCL	11	0
4	L	853	BCL	5	0

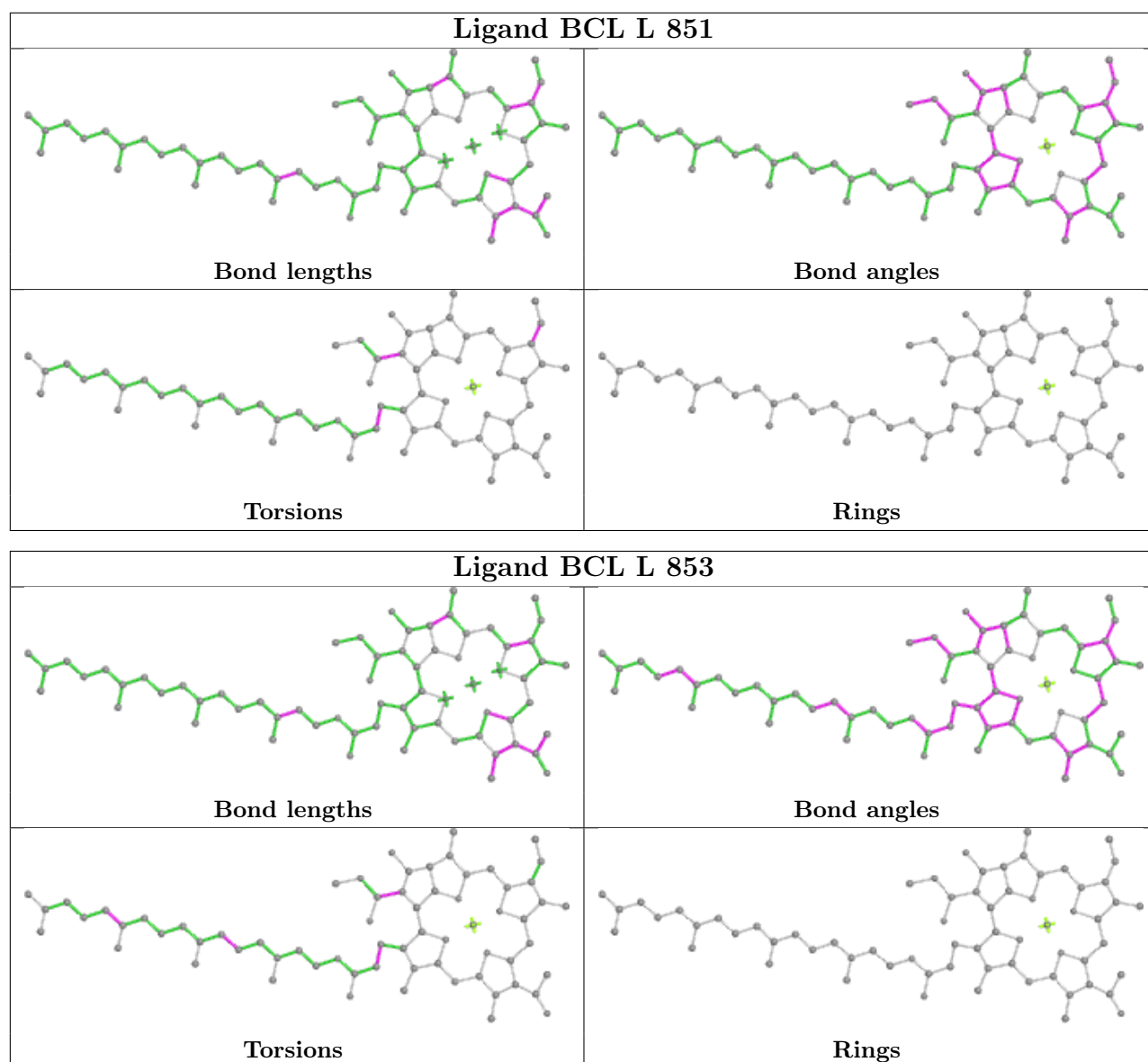
The following is a two-dimensional graphical depiction of Mogul quality analysis of bond lengths, bond angles, torsion angles, and ring geometry for all instances of the Ligand of Interest. In addition, ligands with molecular weight > 250 and outliers as shown on the validation Tables will also be included. For torsion angles, if less than 5% of the Mogul distribution of torsion angles is within 10 degrees of the torsion angle in question, then that torsion angle is considered an outlier. Any bond that is central to one or more torsion angles identified as an outlier by Mogul will be highlighted in the graph. For rings, the root-mean-square deviation (RMSD) between the ring in question and similar rings identified by Mogul is calculated over all ring torsion angles. If the average RMSD is greater than 60 degrees and the minimal RMSD between the ring in question and any Mogul-identified rings is also greater than 60 degrees, then that ring is considered an outlier. The outliers are highlighted in purple. The color gray indicates Mogul did not find sufficient equivalents in the CSD to analyse the geometry.











## 5.7 Other polymers [\(i\)](#)

There are no such residues in this entry.

## 5.8 Polymer linkage issues [\(i\)](#)

There are no chain breaks in this entry.

## 6 Fit of model and data

### 6.1 Protein, DNA and RNA chains

EDS was not executed - this section is therefore empty.

### 6.2 Non-standard residues in protein, DNA, RNA chains

EDS was not executed - this section is therefore empty.

### 6.3 Carbohydrates

EDS was not executed - this section is therefore empty.

### 6.4 Ligands

EDS was not executed - this section is therefore empty.

### 6.5 Other polymers

EDS was not executed - this section is therefore empty.