



Full wwPDB X-ray Structure Validation Report ⓘ

Jun 15, 2020 – 10:21 pm BST

PDB ID : 2JFX
Title : Crystal structure of Helicobacter pylori glutamate racemase in complex with D-Glutamate
Authors : Xue, Y.; Lundqvist, T.
Deposited on : 2007-02-06
Resolution : 2.30 Å(reported)

This is a Full wwPDB X-ray Structure Validation Report for a publicly released PDB entry.

We welcome your comments at validation@mail.wwpdb.org

A user guide is available at

<https://www.wwpdb.org/validation/2017/XrayValidationReportHelp>

with specific help available everywhere you see the ⓘ symbol.

The following versions of software and data (see [references ⓘ](#)) were used in the production of this report:

MolProbity : 4.02b-467
Xtriage (Phenix) : 1.13
EDS : 2.11
Percentile statistics : 20191225.v01 (using entries in the PDB archive December 25th 2019)
Refmac : 5.8.0158
CCP4 : 7.0.044 (Gargrove)
Ideal geometry (proteins) : Engh & Huber (2001)
Ideal geometry (DNA, RNA) : Parkinson et al. (1996)
Validation Pipeline (wwPDB-VP) : 2.11

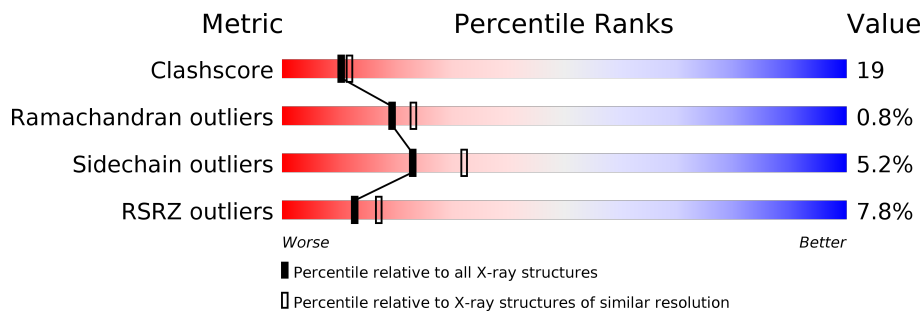
1 Overall quality at a glance

The following experimental techniques were used to determine the structure:

X-RAY DIFFRACTION

The reported resolution of this entry is 2.30 Å.

Percentile scores (ranging between 0-100) for global validation metrics of the entry are shown in the following graphic. The table shows the number of entries on which the scores are based.



Metric	Whole archive (#Entries)	Similar resolution (#Entries, resolution range(Å))
Clashscore	141614	5643 (2.30-2.30)
Ramachandran outliers	138981	5575 (2.30-2.30)
Sidechain outliers	138945	5575 (2.30-2.30)
RSRZ outliers	127900	4938 (2.30-2.30)

The table below summarises the geometric issues observed across the polymeric chains and their fit to the electron density. The red, orange, yellow and green segments on the lower bar indicate the fraction of residues that contain outliers for ≥ 3 , 2, 1 and 0 types of geometric quality criteria respectively. A grey segment represents the fraction of residues that are not modelled. The numeric value for each fraction is indicated below the corresponding segment, with a dot representing fractions $\leq 5\%$. The upper red bar (where present) indicates the fraction of residues that have poor fit to the electron density. The numeric value is given above the bar.

Mol	Chain	Length	Quality of chain
1	A	255	 6% 65% 29% ..
1	B	255	 9% 61% 35% ..

2 Entry composition [i](#)

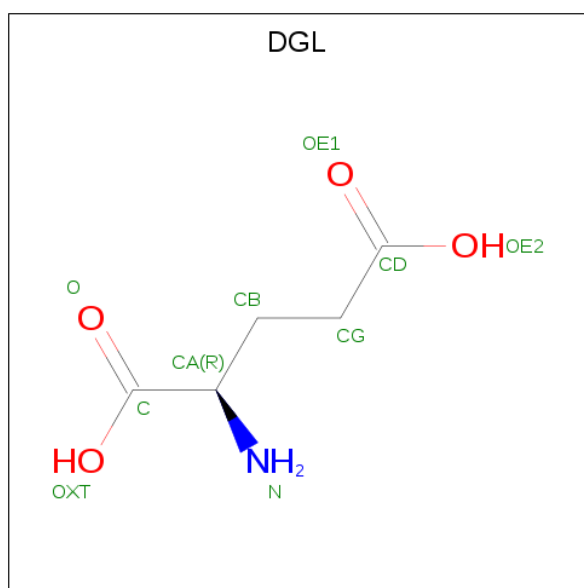
There are 3 unique types of molecules in this entry. The entry contains 4049 atoms, of which 0 are hydrogens and 0 are deuteriums.

In the tables below, the ZeroOcc column contains the number of atoms modelled with zero occupancy, the AltConf column contains the number of residues with at least one atom in alternate conformation and the Trace column contains the number of residues modelled with at most 2 atoms.

- Molecule 1 is a protein called GLUTAMATE RACEMASE.

Mol	Chain	Residues	Atoms					ZeroOcc	AltConf	Trace
			Total	C	N	O	S			
1	A	250	Total 1970	C 1295	N 310	O 358	S 7	0	0	1
1	B	248	Total 1951	C 1280	N 308	O 356	S 7	0	0	1

- Molecule 2 is D-GLUTAMIC ACID (three-letter code: DGL) (formula: C₅H₉NO₄).



Mol	Chain	Residues	Atoms				ZeroOcc	AltConf
			Total	C	N	O		
2	A	1	Total 10	C 5	N 1	O 4	0	0
2	B	1	Total 10	C 5	N 1	O 4	0	0

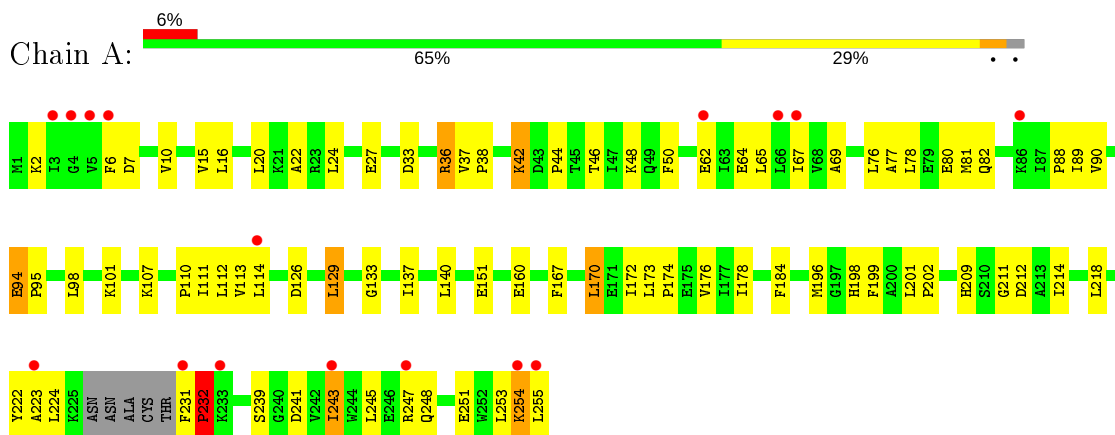
- Molecule 3 is water.

Mol	Chain	Residues	Atoms		ZeroOcc	AltConf
3	A	60	Total 60	O 60	0	0
3	B	48	Total 48	O 48	0	0

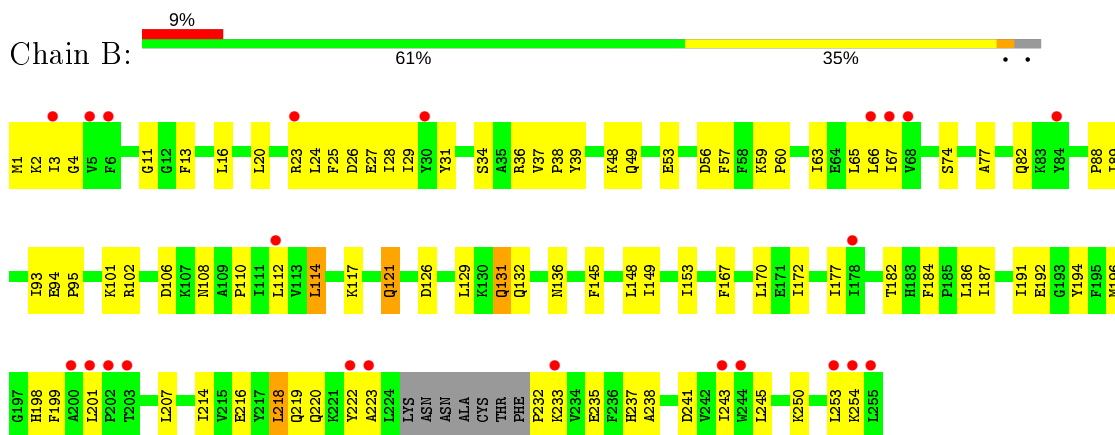
3 Residue-property plots [i](#)

These plots are drawn for all protein, RNA and DNA chains in the entry. The first graphic for a chain summarises the proportions of the various outlier classes displayed in the second graphic. The second graphic shows the sequence view annotated by issues in geometry and electron density. Residues are color-coded according to the number of geometric quality criteria for which they contain at least one outlier: green = 0, yellow = 1, orange = 2 and red = 3 or more. A red dot above a residue indicates a poor fit to the electron density ($RSRZ > 2$). Stretches of 2 or more consecutive residues without any outlier are shown as a green connector. Residues present in the sample, but not in the model, are shown in grey.

- Molecule 1: GLUTAMATE RACEMASE



- Molecule 1: GLUTAMATE RACEMASE



4 Data and refinement statistics

Property	Value	Source
Space group	P 21 21 21	Depositor
Cell constants a, b, c, α , β , γ	62.18Å 81.07Å 113.82Å 90.00° 90.00° 90.00°	Depositor
Resolution (Å)	50.00 – 2.30 19.95 – 2.30	Depositor EDS
% Data completeness (in resolution range)	(Not available) (50.00-2.30) 87.4 (19.95-2.30)	Depositor EDS
R_{merge}	0.08	Depositor
R_{sym}	(Not available)	Depositor
$\langle I/\sigma(I) \rangle$ ¹	1.69 (at 2.30Å)	Xtrriage
Refinement program	CNX 2000.2	Depositor
R, R_{free}	0.228 , 0.281 0.225 , (Not available)	Depositor DCC
R_{free} test set	No test flags present.	wwPDB-VP
Wilson B-factor (Å ²)	43.7	Xtrriage
Anisotropy	0.361	Xtrriage
Bulk solvent k_{sol} (e/Å ³), B_{sol} (Å ²)	0.37 , 51.7	EDS
L-test for twinning ²	$\langle L \rangle = 0.48$, $\langle L^2 \rangle = 0.31$	Xtrriage
Estimated twinning fraction	No twinning to report.	Xtrriage
F_o, F_c correlation	0.94	EDS
Total number of atoms	4049	wwPDB-VP
Average B, all atoms (Å ²)	50.0	wwPDB-VP

Xtrriage's analysis on translational NCS is as follows: *The largest off-origin peak in the Patterson function is 4.99% of the height of the origin peak. No significant pseudotranslation is detected.*

¹Intensities estimated from amplitudes.

²Theoretical values of $\langle |L| \rangle$, $\langle L^2 \rangle$ for acentric reflections are 0.5, 0.333 respectively for untwinned datasets, and 0.375, 0.2 for perfectly twinned datasets.

5 Model quality [i](#)

5.1 Standard geometry [i](#)

Bond lengths and bond angles in the following residue types are not validated in this section: DGL

The Z score for a bond length (or angle) is the number of standard deviations the observed value is removed from the expected value. A bond length (or angle) with $|Z| > 5$ is considered an outlier worth inspection. RMSZ is the root-mean-square of all Z scores of the bond lengths (or angles).

Mol	Chain	Bond lengths		Bond angles	
		RMSZ	# Z >5	RMSZ	# Z >5
1	A	0.41	0/2017	0.63	0/2736
1	B	0.38	0/1997	0.59	0/2708
All	All	0.40	0/4014	0.61	0/5444

There are no bond length outliers.

There are no bond angle outliers.

There are no chirality outliers.

There are no planarity outliers.

5.2 Too-close contacts [i](#)

In the following table, the Non-H and H(model) columns list the number of non-hydrogen atoms and hydrogen atoms in the chain respectively. The H(added) column lists the number of hydrogen atoms added and optimized by MolProbity. The Clashes column lists the number of clashes within the asymmetric unit, whereas Symm-Clashes lists symmetry related clashes.

Mol	Chain	Non-H	H(model)	H(added)	Clashes	Symm-Clashes
1	A	1970	0	2012	71	0
1	B	1951	0	1993	80	0
2	A	10	0	7	0	0
2	B	10	0	7	1	0
3	A	60	0	0	3	0
3	B	48	0	0	1	0
All	All	4049	0	4019	148	0

The all-atom clashscore is defined as the number of clashes found per 1000 atoms (including hydrogen atoms). The all-atom clashscore for this structure is 19.

All (148) close contacts within the same asymmetric unit are listed below, sorted by their clash

magnitude.

Atom-1	Atom-2	Interatomic distance (Å)	Clash overlap (Å)
1:A:95:PRO:HG2	1:A:214:ILE:HD12	1.54	0.88
1:B:59:LYS:HB2	1:B:60:PRO:HD3	1.60	0.83
1:A:167:PHE:O	1:A:170:LEU:HB2	1.81	0.81
1:B:238:ALA:HB2	1:B:245:LEU:HD13	1.61	0.80
1:A:241:ASP:OD1	1:A:243:ILE:HG23	1.82	0.79
1:B:102:ARG:HH12	1:B:216:GLU:HB3	1.47	0.79
1:A:211:GLY:O	1:A:214:ILE:HG22	1.82	0.78
1:B:101:LYS:HD2	1:B:132:GLN:OE1	1.84	0.78
1:A:255:LEU:HD12	1:A:255:LEU:H	1.52	0.72
1:B:167:PHE:O	1:B:170:LEU:HB2	1.91	0.71
1:A:107:LYS:HG3	1:A:133:GLY:O	1.93	0.69
1:A:33:ASP:HA	1:A:239:SER:HB2	1.76	0.66
1:A:160:GLU:OE1	3:A:2044:HOH:O	2.14	0.66
1:B:235:GLU:HG2	1:B:237:HIS:NE2	2.11	0.66
1:A:151:GLU:OE2	1:B:117:LYS:HE3	1.96	0.65
1:A:88:PRO:HA	3:A:2020:HOH:O	1.97	0.62
1:B:26:ASP:O	1:B:27:GLU:HG3	1.99	0.62
1:B:172:ILE:O	1:B:172:ILE:HD12	1.99	0.62
1:B:250:LYS:O	1:B:254:LYS:HD3	2.01	0.60
1:A:36:ARG:HG3	1:B:36:ARG:HG2	1.82	0.60
1:A:196:MET:HA	1:A:201:LEU:HB2	1.84	0.59
1:A:222:TYR:O	1:A:224:LEU:HG	2.02	0.59
1:B:24:LEU:H	1:B:24:LEU:HD23	1.66	0.59
1:B:102:ARG:NH1	1:B:216:GLU:HB3	2.16	0.59
1:A:222:TYR:O	1:A:224:LEU:N	2.38	0.57
1:A:209:HIS:HD2	1:A:211:GLY:N	2.02	0.57
1:B:48:LYS:HA	1:B:77:ALA:HB2	1.87	0.57
1:A:231:PHE:HB3	1:A:232:PRO:HD2	1.86	0.57
1:B:27:GLU:HG2	1:B:233:LYS:HB3	1.86	0.56
1:B:235:GLU:HG2	1:B:237:HIS:HE2	1.71	0.56
1:B:13:PHE:HB3	1:B:253:LEU:CD1	2.36	0.55
1:A:78:LEU:O	1:A:82:GLN:HG3	2.06	0.55
1:B:112:LEU:HD22	1:B:170:LEU:HD21	1.88	0.55
1:A:113:VAL:HG22	1:A:178:ILE:HD12	1.87	0.55
1:A:42:LYS:HE2	1:B:34:SER:O	2.07	0.55
1:B:117:LYS:O	1:B:121:GLN:HB2	2.06	0.55
1:B:20:LEU:O	1:B:23:ARG:HG2	2.07	0.54
1:B:196:MET:HG3	1:B:201:LEU:O	2.08	0.54
1:A:33:ASP:CG	1:A:36:ARG:HE	2.11	0.54
1:B:3:ILE:HG22	1:B:65:LEU:HB3	1.90	0.54
1:A:80:GLU:CD	1:A:80:GLU:H	2.12	0.53

Continued on next page...

Continued from previous page...

Atom-1	Atom-2	Interatomic distance (Å)	Clash overlap (Å)
1:A:64:GLU:O	1:A:88:PRO:HD2	2.08	0.53
1:B:102:ARG:HH12	1:B:216:GLU:CB	2.19	0.53
1:B:112:LEU:HG	1:B:114:LEU:HD13	1.90	0.53
1:B:192:GLU:HG3	1:B:207:LEU:HD11	1.91	0.53
1:A:199:PHE:HB2	1:A:201:LEU:HD13	1.91	0.52
1:B:177:ILE:HB	1:B:207:LEU:CD2	2.40	0.52
1:B:65:LEU:HD13	1:B:66:LEU:N	2.25	0.52
1:A:110:PRO:HB2	1:A:174:PRO:HA	1.92	0.52
1:A:184:PHE:N	1:A:184:PHE:CD2	2.75	0.52
1:B:131:GLN:HG3	1:B:132:GLN:HE21	1.74	0.52
1:B:184:PHE:N	1:B:184:PHE:CD2	2.77	0.52
1:B:24:LEU:HG	1:B:25:PHE:CE1	2.45	0.52
1:A:10:VAL:HG11	1:A:248:GLN:HG3	1.91	0.52
1:B:131:GLN:CG	1:B:132:GLN:HE21	2.23	0.52
1:A:209:HIS:CD2	1:A:211:GLY:H	2.28	0.51
1:A:254:LYS:NZ	1:A:255:LEU:HD13	2.25	0.51
1:A:44:PRO:O	1:A:48:LYS:HG3	2.10	0.51
1:A:90:VAL:HG22	1:A:214:ILE:HD11	1.94	0.50
1:A:65:LEU:HD23	1:A:65:LEU:C	2.31	0.50
1:B:238:ALA:CB	1:B:245:LEU:HD13	2.39	0.50
1:B:49:GLN:HE21	1:B:53:GLU:HG3	1.76	0.50
1:B:94:GLU:HB2	1:B:95:PRO:HD3	1.94	0.50
1:A:46:THR:HG22	1:A:50:PHE:CE2	2.47	0.49
1:B:241:ASP:OD2	1:B:243:ILE:HB	2.12	0.49
1:A:37:VAL:CG2	1:A:38:PRO:HA	2.42	0.49
1:B:67:ILE:HD11	1:B:218:LEU:HD21	1.95	0.49
1:A:112:LEU:HD22	1:A:170:LEU:HD21	1.94	0.49
1:B:1:MET:HE2	1:B:223:ALA:HB1	1.94	0.49
1:B:177:ILE:HB	1:B:207:LEU:HD22	1.95	0.49
1:B:29:ILE:HD13	1:B:235:GLU:HB3	1.95	0.49
1:A:209:HIS:HD2	1:A:211:GLY:H	1.59	0.48
1:B:194:TYR:O	1:B:198:HIS:HB2	2.13	0.48
1:A:22:ALA:HB3	1:A:24:LEU:HG	1.95	0.48
1:B:250:LYS:O	1:B:254:LYS:HB2	2.11	0.48
1:B:1:MET:CE	1:B:223:ALA:HB1	2.43	0.48
1:B:53:GLU:HA	1:B:56:ASP:OD2	2.13	0.48
1:B:148:LEU:HD22	1:B:153:ILE:HG21	1.96	0.48
1:B:82:GLN:HA	1:B:89:ILE:HD12	1.96	0.48
1:A:44:PRO:HA	1:A:76:LEU:HD23	1.96	0.48
1:B:121:GLN:HG3	3:B:2028:HOH:O	2.14	0.47
1:B:82:GLN:HG2	1:B:89:ILE:HB	1.96	0.47

Continued on next page...

Continued from previous page...

Atom-1	Atom-2	Interatomic distance (Å)	Clash overlap (Å)
1:A:173:LEU:HD23	1:A:173:LEU:C	2.35	0.47
1:A:173:LEU:HD12	1:A:199:PHE:HD2	1.78	0.47
1:B:3:ILE:HD13	1:B:25:PHE:CD2	2.50	0.46
1:A:82:GLN:HG2	1:A:89:ILE:HB	1.98	0.46
1:A:2:LYS:HG3	1:A:27:GLU:HB3	1.98	0.46
1:B:37:VAL:CG2	1:B:38:PRO:HA	2.45	0.46
1:B:16:LEU:HD23	1:B:253:LEU:HD11	1.98	0.46
1:B:11:GLY:O	1:B:182:THR:HB	2.16	0.46
1:A:129:LEU:HB3	1:A:137:ILE:HD11	1.98	0.45
1:B:145:PHE:O	1:B:149:ILE:HG13	2.16	0.45
1:B:23:ARG:HD3	1:B:232:PRO:CG	2.46	0.45
1:B:199:PHE:HB2	1:B:201:LEU:HG	1.99	0.45
1:B:56:ASP:HA	1:B:59:LYS:HE2	1.98	0.45
1:A:209:HIS:CD2	1:A:212:ASP:H	2.34	0.45
1:A:231:PHE:CB	1:A:232:PRO:HD2	2.47	0.45
1:A:77:ALA:O	1:A:81:MET:HG3	2.17	0.45
1:A:129:LEU:HB3	1:A:137:ILE:CD1	2.47	0.45
1:A:253:LEU:O	1:A:254:LYS:C	2.55	0.45
1:A:90:VAL:HG13	1:A:90:VAL:O	2.17	0.45
1:A:95:PRO:HG2	1:A:214:ILE:CD1	2.37	0.45
1:B:186:LEU:HD12	1:B:186:LEU:N	2.32	0.45
1:B:110:PRO:HG3	1:B:136:ASN:ND2	2.32	0.45
1:A:76:LEU:N	1:A:76:LEU:HD12	2.32	0.44
1:B:170:LEU:HD12	1:B:170:LEU:HA	1.86	0.44
1:A:112:LEU:CD2	1:A:170:LEU:HD21	2.47	0.44
1:B:102:ARG:NH1	1:B:216:GLU:OE1	2.49	0.44
1:A:247:ARG:HH11	1:A:247:ARG:HG2	1.83	0.44
1:A:98:LEU:HD12	1:A:98:LEU:O	2.18	0.44
1:A:80:GLU:N	1:A:80:GLU:CD	2.71	0.44
1:A:111:ILE:HG12	1:A:176:VAL:HB	2.00	0.44
1:A:67:ILE:HG12	1:A:90:VAL:CG1	2.48	0.44
1:A:107:LYS:CG	1:A:133:GLY:O	2.65	0.43
1:B:112:LEU:CD2	1:B:170:LEU:HD21	2.48	0.43
1:B:39:TYR:H	2:B:1256:DGL:CD	2.31	0.43
1:A:198:HIS:C	1:A:199:PHE:CD1	2.92	0.43
1:B:172:ILE:C	1:B:172:ILE:HD12	2.39	0.43
1:B:187:ILE:O	1:B:191:ILE:HG13	2.19	0.42
1:B:192:GLU:CG	1:B:207:LEU:HD11	2.49	0.42
1:B:4:GLY:HA3	1:B:63:ILE:HD13	2.01	0.42
1:B:65:LEU:CD2	1:B:88:PRO:HG2	2.49	0.42
1:B:2:LYS:HG2	1:B:63:ILE:HG22	2.01	0.42

Continued on next page...

Continued from previous page...

Atom-1	Atom-2	Interatomic distance (Å)	Clash overlap (Å)
1:A:254:LYS:HD2	1:A:254:LYS:HA	1.87	0.42
1:B:153:ILE:HD12	1:B:153:ILE:N	2.33	0.42
1:B:74:SER:HB3	1:B:93:ILE:HG13	2.00	0.42
1:B:65:LEU:C	1:B:65:LEU:HD13	2.40	0.42
1:A:101:LYS:HE3	1:A:107:LYS:NZ	2.35	0.42
1:A:6:PHE:CD1	1:A:7:ASP:N	2.88	0.42
1:B:106:ASP:C	1:B:108:ASN:H	2.23	0.42
1:A:15:VAL:HG21	1:A:69:ALA:HB1	2.01	0.41
1:A:255:LEU:HD12	1:A:255:LEU:N	2.30	0.41
1:B:31:TYR:HB2	1:B:57:PHE:CE2	2.56	0.41
1:A:37:VAL:HG22	1:A:38:PRO:HA	2.02	0.41
1:B:3:ILE:O	1:B:28:ILE:HA	2.21	0.41
1:B:1:MET:HE3	1:B:223:ALA:O	2.20	0.41
1:B:214:ILE:O	1:B:218:LEU:HB2	2.21	0.41
1:B:4:GLY:O	1:B:66:LEU:HD12	2.21	0.41
1:A:33:ASP:OD2	1:A:36:ARG:NE	2.52	0.41
1:B:59:LYS:N	1:B:60:PRO:CD	2.83	0.41
1:A:78:LEU:HB3	3:A:2019:HOH:O	2.20	0.41
1:A:110:PRO:HB3	1:A:172:ILE:HD12	2.02	0.40
1:A:16:LEU:O	1:A:20:LEU:HG	2.20	0.40
1:A:201:LEU:HA	1:A:202:PRO:HD3	1.87	0.40
1:B:184:PHE:N	1:B:184:PHE:HD2	2.19	0.40
1:B:24:LEU:CD2	1:B:24:LEU:H	2.31	0.40
1:A:170:LEU:HA	1:A:170:LEU:HD12	1.89	0.40
1:A:94:GLU:CB	1:A:95:PRO:HD3	2.52	0.40

There are no symmetry-related clashes.

5.3 Torsion angles [i](#)

5.3.1 Protein backbone [i](#)

In the following table, the Percentiles column shows the percent Ramachandran outliers of the chain as a percentile score with respect to all X-ray entries followed by that with respect to entries of similar resolution.

The Analysed column shows the number of residues for which the backbone conformation was analysed, and the total number of residues.

Mol	Chain	Analysed	Favoured	Allowed	Outliers	Percentiles
1	A	246/255 (96%)	230 (94%)	13 (5%)	3 (1%)	13 14

Continued on next page...

Continued from previous page...

Mol	Chain	Analysed	Favoured	Allowed	Outliers	Percentiles	
1	B	244/255 (96%)	224 (92%)	19 (8%)	1 (0%)	34	42
All	All	490/510 (96%)	454 (93%)	32 (6%)	4 (1%)	19	23

All (4) Ramachandran outliers are listed below:

Mol	Chain	Res	Type
1	A	223	ALA
1	A	232	PRO
1	B	222	TYR
1	A	254	LYS

5.3.2 Protein sidechains [i](#)

In the following table, the Percentiles column shows the percent sidechain outliers of the chain as a percentile score with respect to all X-ray entries followed by that with respect to entries of similar resolution.

The Analysed column shows the number of residues for which the sidechain conformation was analysed, and the total number of residues.

Mol	Chain	Analysed	Rotameric	Outliers	Percentiles	
1	A	214/219 (98%)	200 (94%)	14 (6%)	17	23
1	B	212/219 (97%)	204 (96%)	8 (4%)	33	47
All	All	426/438 (97%)	404 (95%)	22 (5%)	23	32

All (22) residues with a non-rotameric sidechain are listed below:

Mol	Chain	Res	Type
1	A	36	ARG
1	A	42	LYS
1	A	62	GLU
1	A	94	GLU
1	A	114	LEU
1	A	126	ASP
1	A	129	LEU
1	A	140	LEU
1	A	170	LEU
1	A	218	LEU
1	A	232	PRO
1	A	243	ILE

Continued on next page...

Continued from previous page...

Mol	Chain	Res	Type
1	A	245	LEU
1	A	251	GLU
1	B	114	LEU
1	B	121	GLN
1	B	126	ASP
1	B	129	LEU
1	B	131	GLN
1	B	218	LEU
1	B	219	GLN
1	B	220	GLN

Some sidechains can be flipped to improve hydrogen bonding and reduce clashes. All (5) such sidechains are listed below:

Mol	Chain	Res	Type
1	A	209	HIS
1	A	220	GLN
1	B	49	GLN
1	B	71	ASN
1	B	131	GLN

5.3.3 RNA [i](#)

There are no RNA molecules in this entry.

5.4 Non-standard residues in protein, DNA, RNA chains [i](#)

There are no non-standard protein/DNA/RNA residues in this entry.

5.5 Carbohydrates [i](#)

There are no carbohydrates in this entry.

5.6 Ligand geometry [i](#)

2 ligands are modelled in this entry.

There are no bond length outliers.

There are no bond angle outliers.

There are no chirality outliers.

There are no torsion outliers.

There are no ring outliers.

No monomer is involved in short contacts.

5.7 Other polymers

There are no such residues in this entry.

5.8 Polymer linkage issues

There are no chain breaks in this entry.

6 Fit of model and data

6.1 Protein, DNA and RNA chains

In the following table, the column labelled ‘#RSRZ> 2’ contains the number (and percentage) of RSRZ outliers, followed by percent RSRZ outliers for the chain as percentile scores relative to all X-ray entries and entries of similar resolution. The OWAB column contains the minimum, median, 95th percentile and maximum values of the occupancy-weighted average B-factor per residue. The column labelled ‘Q< 0.9’ lists the number of (and percentage) of residues with an average occupancy less than 0.9.

Mol	Chain	Analysed	<RSRZ>	#RSRZ>2	OWAB(Å ²)	Q<0.9
1	A	250/255 (98%)	0.21	16 (6%) 19 25	24, 42, 66, 82	0
1	B	248/255 (97%)	0.53	23 (9%) 8 11	32, 53, 82, 93	0
All	All	498/510 (97%)	0.37	39 (7%) 13 17	24, 48, 76, 93	0

All (39) RSRZ outliers are listed below:

Mol	Chain	Res	Type	RSRZ
1	B	255	LEU	10.9
1	B	23	ARG	6.1
1	B	202	PRO	5.6
1	A	255	LEU	5.3
1	B	5	VAL	4.9
1	A	254	LYS	4.6
1	B	254	LYS	4.3
1	B	67	ILE	4.2
1	B	6	PHE	4.1
1	A	231	PHE	3.9
1	B	178	ILE	3.8
1	B	200	ALA	3.6
1	B	222	TYR	3.6
1	B	223	ALA	3.5
1	B	203	THR	3.4
1	A	5	VAL	3.3
1	A	67	ILE	3.1
1	B	84	TYR	3.0
1	A	86	LYS	3.0
1	B	244	TRP	2.8
1	B	3	ILE	2.7
1	A	4	GLY	2.7
1	B	30	TYR	2.6
1	A	223	ALA	2.5

Continued on next page...

Continued from previous page...

Mol	Chain	Res	Type	RSRZ
1	A	114	LEU	2.5
1	B	66	LEU	2.4
1	B	201	LEU	2.4
1	A	233	LYS	2.4
1	B	233	LYS	2.3
1	A	6	PHE	2.3
1	A	66	LEU	2.3
1	B	68	VAL	2.3
1	A	62	GLU	2.2
1	B	243	ILE	2.2
1	A	3	ILE	2.2
1	B	112	LEU	2.1
1	A	243	ILE	2.0
1	A	247	ARG	2.0
1	B	253	LEU	2.0

6.2 Non-standard residues in protein, DNA, RNA chains [i](#)

There are no non-standard protein/DNA/RNA residues in this entry.

6.3 Carbohydrates [i](#)

There are no carbohydrates in this entry.

6.4 Ligands [i](#)

In the following table, the Atoms column lists the number of modelled atoms in the group and the number defined in the chemical component dictionary. The B-factors column lists the minimum, median, 95th percentile and maximum values of B factors of atoms in the group. The column labelled 'Q< 0.9' lists the number of atoms with occupancy less than 0.9.

Mol	Type	Chain	Res	Atoms	RSCC	RSR	B-factors(\AA^2)	Q<0.9
2	DGL	B	1256	10/10	0.97	0.10	36,38,44,44	0
2	DGL	A	1256	10/10	0.98	0.14	32,35,38,38	0

6.5 Other polymers [i](#)

There are no such residues in this entry.