



Full wwPDB X-ray Structure Validation Report ⓘ

Aug 6, 2023 – 06:25 PM EDT

PDB ID : 1JBM
Title : Heptameric crystal structure of Mth649, an Sm-like archaeal protein from Methanobacterium thermoautotrophicum
Authors : Mura, C.; Eisenberg, D.
Deposited on : 2001-06-06
Resolution : 1.85 Å(reported)

This is a Full wwPDB X-ray Structure Validation Report for a publicly released PDB entry.

We welcome your comments at validation@mail.wwpdb.org

A user guide is available at

<https://www.wwpdb.org/validation/2017/XrayValidationReportHelp>

with specific help available everywhere you see the ⓘ symbol.

The types of validation reports are described at

<http://www.wwpdb.org/validation/2017/FAQs#types>.

The following versions of software and data (see [references ⓘ](#)) were used in the production of this report:

MolProbity : 4.02b-467
Mogul : 1.8.5 (274361), CSD as541be (2020)
Xtriage (Phenix) : 1.13
EDS : 2.35
Percentile statistics : 20191225.v01 (using entries in the PDB archive December 25th 2019)
Refmac : 5.8.0158
CCP4 : 7.0.044 (Gargrove)
Ideal geometry (proteins) : Engh & Huber (2001)
Ideal geometry (DNA, RNA) : Parkinson et al. (1996)
Validation Pipeline (wwPDB-VP) : 2.35

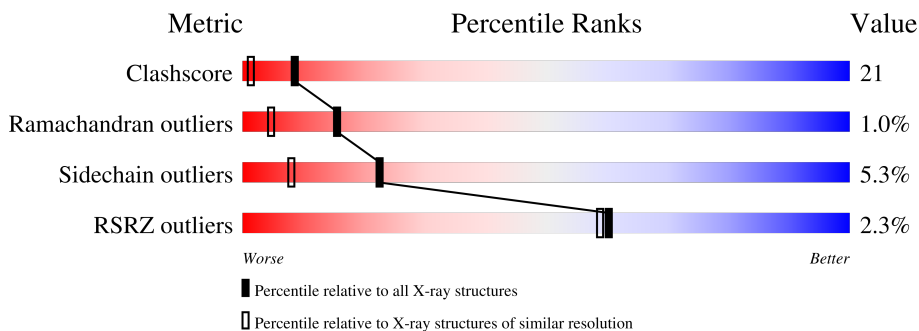
1 Overall quality at a glance

The following experimental techniques were used to determine the structure:

X-RAY DIFFRACTION

The reported resolution of this entry is 1.85 Å.

Percentile scores (ranging between 0-100) for global validation metrics of the entry are shown in the following graphic. The table shows the number of entries on which the scores are based.



Metric	Whole archive (#Entries)	Similar resolution (#Entries, resolution range(Å))
Clashscore	141614	2625 (1.86-1.86)
Ramachandran outliers	138981	2592 (1.86-1.86)
Sidechain outliers	138945	2592 (1.86-1.86)
RSRZ outliers	127900	2436 (1.86-1.86)

The table below summarises the geometric issues observed across the polymeric chains and their fit to the electron density. The red, orange, yellow and green segments of the lower bar indicate the fraction of residues that contain outliers for ≥ 3 , 2, 1 and 0 types of geometric quality criteria respectively. A grey segment represents the fraction of residues that are not modelled. The numeric value for each fraction is indicated below the corresponding segment, with a dot representing fractions $\leq 5\%$. The upper red bar (where present) indicates the fraction of residues that have poor fit to the electron density. The numeric value is given above the bar.

Mol	Chain	Length	Quality of chain
1	A	86	
1	B	86	
1	C	86	
1	D	86	
1	E	86	
1	F	86	

Continued on next page...

Continued from previous page...

Mol	Chain	Length	Quality of chain
1	G	86	

The following table lists non-polymeric compounds, carbohydrate monomers and non-standard residues in protein, DNA, RNA chains that are outliers for geometric or electron-density-fit criteria:

Mol	Type	Chain	Res	Chirality	Geometry	Clashes	Electron density
2	ACY	A	1002	-	-	X	-
2	ACY	E	1003	-	-	X	-

2 Entry composition

There are 4 unique types of molecules in this entry. The entry contains 4423 atoms, of which 0 are hydrogens and 0 are deuteriums.

In the tables below, the ZeroOcc column contains the number of atoms modelled with zero occupancy, the AltConf column contains the number of residues with at least one atom in alternate conformation and the Trace column contains the number of residues modelled with at most 2 atoms.

- Molecule 1 is a protein called PUTATIVE SNRNP SM-LIKE PROTEIN.

Mol	Chain	Residues	Atoms					ZeroOcc	AltConf	Trace
			Total	C	N	O	S			
1	A	78	Total 608	C 380	N 112	O 115	S 1	0	0	0
1	B	73	Total 573	C 357	N 106	O 109	S 1	0	0	0
1	C	77	Total 601	C 375	N 111	O 114	S 1	0	0	0
1	D	71	Total 561	C 351	N 103	O 106	S 1	0	0	0
1	E	75	Total 589	C 368	N 109	O 111	S 1	0	0	0
1	F	73	Total 574	C 359	N 106	O 108	S 1	0	0	0
1	G	74	Total 580	C 363	N 107	O 109	S 1	0	0	0

There are 42 discrepancies between the modelled and reference sequences:

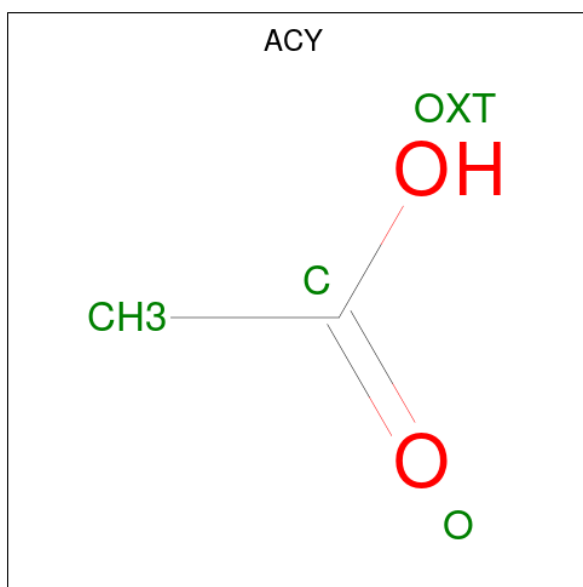
Chain	Residue	Modelled	Actual	Comment	Reference
A	81	ARG	PRO	conflict	UNP O26745
A	82	GLY	-	insertion	UNP O26745
A	83	LYS	-	insertion	UNP O26745
A	84	LEU	-	insertion	UNP O26745
A	85	ALA	-	insertion	UNP O26745
A	86	ALA	-	insertion	UNP O26745
B	81	ARG	PRO	conflict	UNP O26745
B	82	GLY	-	insertion	UNP O26745
B	83	LYS	-	insertion	UNP O26745
B	84	LEU	-	insertion	UNP O26745
B	85	ALA	-	insertion	UNP O26745
B	86	ALA	-	insertion	UNP O26745
C	81	ARG	PRO	conflict	UNP O26745
C	82	GLY	-	insertion	UNP O26745
C	83	LYS	-	insertion	UNP O26745

Continued on next page...

Continued from previous page...

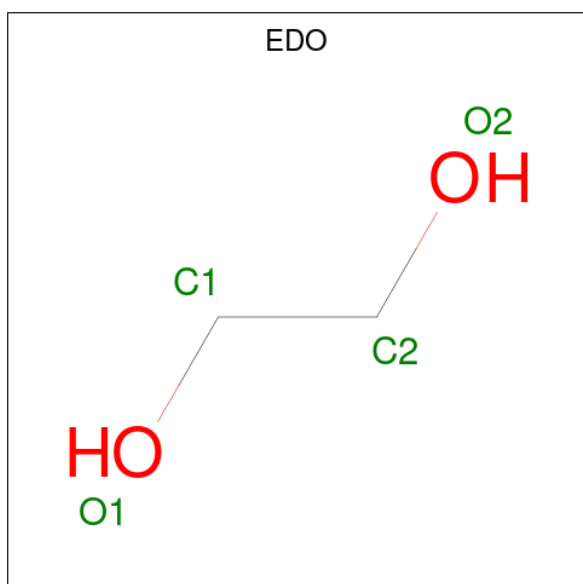
Chain	Residue	Modelled	Actual	Comment	Reference
C	84	LEU	-	insertion	UNP O26745
C	85	ALA	-	insertion	UNP O26745
C	86	ALA	-	insertion	UNP O26745
D	81	ARG	PRO	conflict	UNP O26745
D	82	GLY	-	insertion	UNP O26745
D	83	LYS	-	insertion	UNP O26745
D	84	LEU	-	insertion	UNP O26745
D	85	ALA	-	insertion	UNP O26745
D	86	ALA	-	insertion	UNP O26745
E	81	ARG	PRO	conflict	UNP O26745
E	82	GLY	-	insertion	UNP O26745
E	83	LYS	-	insertion	UNP O26745
E	84	LEU	-	insertion	UNP O26745
E	85	ALA	-	insertion	UNP O26745
E	86	ALA	-	insertion	UNP O26745
F	81	ARG	PRO	conflict	UNP O26745
F	82	GLY	-	insertion	UNP O26745
F	83	LYS	-	insertion	UNP O26745
F	84	LEU	-	insertion	UNP O26745
F	85	ALA	-	insertion	UNP O26745
F	86	ALA	-	insertion	UNP O26745
G	81	ARG	PRO	conflict	UNP O26745
G	82	GLY	-	insertion	UNP O26745
G	83	LYS	-	insertion	UNP O26745
G	84	LEU	-	insertion	UNP O26745
G	85	ALA	-	insertion	UNP O26745
G	86	ALA	-	insertion	UNP O26745

- Molecule 2 is ACETIC ACID (three-letter code: ACY) (formula: C₂H₄O₂).



Mol	Chain	Residues	Atoms	ZeroOcc	AltConf
2	A	1	Total C O 4 2 2	0	0
2	C	1	Total C O 4 2 2	0	0
2	D	1	Total C O 4 2 2	0	0
2	E	1	Total C O 4 2 2	0	0
2	F	1	Total C O 4 2 2	0	0

- Molecule 3 is 1,2-ETHANEDIOL (three-letter code: EDO) (formula: C₂H₆O₂).



Mol	Chain	Residues	Atoms	ZeroOcc	AltConf
3	C	1	Total C O 4 2 2	0	0
3	C	1	Total C O 4 2 2	0	0
3	D	1	Total C O 4 2 2	0	0
3	D	1	Total C O 4 2 2	0	0
3	E	1	Total C O 4 2 2	0	0
3	E	1	Total C O 4 2 2	0	0
3	F	1	Total C O 4 2 2	0	0
3	F	1	Total C O 4 2 2	0	0
3	F	1	Total C O 4 2 2	0	0
3	G	1	Total C O 4 2 2	0	0
3	G	1	Total C O 4 2 2	0	0

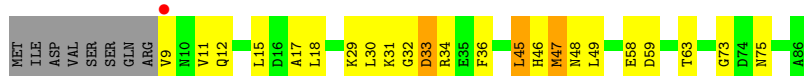
- Molecule 4 is water.

Mol	Chain	Residues	Atoms	ZeroOcc	AltConf
4	A	53	Total O 53 53	0	0
4	B	35	Total O 35 35	0	0
4	C	23	Total O 23 23	0	0
4	D	23	Total O 23 23	0	0
4	E	56	Total O 56 56	0	0
4	F	28	Total O 28 28	0	0
4	G	55	Total O 55 55	0	0

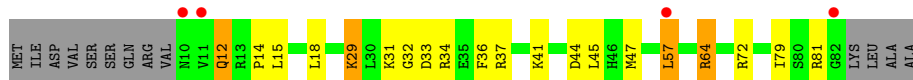
3 Residue-property plots [i](#)

These plots are drawn for all protein, RNA, DNA and oligosaccharide chains in the entry. The first graphic for a chain summarises the proportions of the various outlier classes displayed in the second graphic. The second graphic shows the sequence view annotated by issues in geometry and electron density. Residues are color-coded according to the number of geometric quality criteria for which they contain at least one outlier: green = 0, yellow = 1, orange = 2 and red = 3 or more. A red dot above a residue indicates a poor fit to the electron density ($RSRZ > 2$). Stretches of 2 or more consecutive residues without any outlier are shown as a green connector. Residues present in the sample, but not in the model, are shown in grey.

- Molecule 1: PUTATIVE SNRNP SM-LIKE PROTEIN



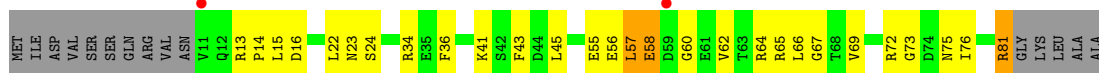
- Molecule 1: PUTATIVE SNRNP SM-LIKE PROTEIN



- Molecule 1: PUTATIVE SNRNP SM-LIKE PROTEIN



- Molecule 1: PUTATIVE SNRNP SM-LIKE PROTEIN



- Molecule 1: PUTATIVE SNRNP SM-LIKE PROTEIN

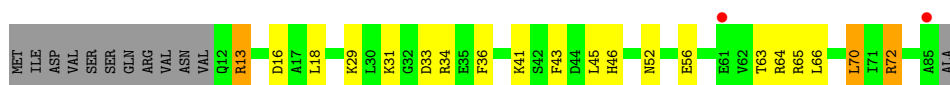


- Molecule 1: PUTATIVE SNRNP SM-LIKE PROTEIN





● Molecule 1: PUTATIVE SNRNP SM-LIKE PROTEIN



4 Data and refinement statistics

Property	Value	Source
Space group	P 1	Depositor
Cell constants a, b, c, α , β , γ	45.07Å 54.08Å 62.35Å 87.58° 72.86° 81.45°	Depositor
Resolution (Å)	20.00 – 1.85 59.58 – 1.85	Depositor EDS
% Data completeness (in resolution range)	91.4 (20.00-1.85) 91.4 (59.58-1.85)	Depositor EDS
R_{merge}	0.05	Depositor
R_{sym}	(Not available)	Depositor
$\langle I/\sigma(I) \rangle$ ¹	3.24 (at 1.86Å)	Xtrriage
Refinement program	CNS	Depositor
R, R_{free}	0.196 , 0.238 0.191 , (Not available)	Depositor DCC
R_{free} test set	No test flags present.	wwPDB-VP
Wilson B-factor (Å ²)	21.2	Xtrriage
Anisotropy	0.284	Xtrriage
Bulk solvent k_{sol} (e/Å ³), B_{sol} (Å ²)	0.36 , 56.9	EDS
L-test for twinning ²	$\langle L \rangle = 0.49$, $\langle L^2 \rangle = 0.33$	Xtrriage
Estimated twinning fraction	No twinning to report.	Xtrriage
F_o, F_c correlation	0.95	EDS
Total number of atoms	4423	wwPDB-VP
Average B, all atoms (Å ²)	28.0	wwPDB-VP

Xtrriage's analysis on translational NCS is as follows: *The largest off-origin peak in the Patterson function is 8.64% of the height of the origin peak. No significant pseudotranslation is detected.*

¹Intensities estimated from amplitudes.

²Theoretical values of $\langle |L| \rangle$, $\langle L^2 \rangle$ for acentric reflections are 0.5, 0.333 respectively for untwinned datasets, and 0.375, 0.2 for perfectly twinned datasets.

5 Model quality i

5.1 Standard geometry i

Bond lengths and bond angles in the following residue types are not validated in this section: EDO, ACY

The Z score for a bond length (or angle) is the number of standard deviations the observed value is removed from the expected value. A bond length (or angle) with $|Z| > 5$ is considered an outlier worth inspection. RMSZ is the root-mean-square of all Z scores of the bond lengths (or angles).

Mol	Chain	Bond lengths		Bond angles	
		RMSZ	# $ Z > 5$	RMSZ	# $ Z > 5$
1	A	0.88	1/613 (0.2%)	1.03	2/824 (0.2%)
1	B	0.81	0/578	0.96	0/778
1	C	0.89	1/606 (0.2%)	0.98	0/814
1	D	0.77	0/566	0.92	1/762 (0.1%)
1	E	0.92	0/594	1.02	2/799 (0.3%)
1	F	0.78	0/579	0.95	0/778
1	G	0.96	0/585	1.09	1/786 (0.1%)
All	All	0.86	2/4121 (0.0%)	0.99	6/5541 (0.1%)

All (2) bond length outliers are listed below:

Mol	Chain	Res	Type	Atoms	Z	Observed(Å)	Ideal(Å)
1	A	47	MET	SD-CE	-5.22	1.48	1.77
1	C	77	VAL	CB-CG2	5.17	1.63	1.52

All (6) bond angle outliers are listed below:

Mol	Chain	Res	Type	Atoms	Z	Observed(°)	Ideal(°)
1	G	72	ARG	NE-CZ-NH1	6.83	123.72	120.30
1	A	29	LYS	CD-CE-NZ	-5.63	98.75	111.70
1	E	49	LEU	CB-CG-CD1	-5.44	101.75	111.00
1	A	47	MET	CG-SD-CE	-5.26	91.79	100.20
1	E	33	ASP	N-CA-C	5.08	124.70	111.00
1	D	67	GLY	N-CA-C	-5.04	100.49	113.10

There are no chirality outliers.

There are no planarity outliers.

5.2 Too-close contacts

In the following table, the Non-H and H(model) columns list the number of non-hydrogen atoms and hydrogen atoms in the chain respectively. The H(added) column lists the number of hydrogen atoms added and optimized by MolProbity. The Clashes column lists the number of clashes within the asymmetric unit, whereas Symm-Clashes lists symmetry-related clashes.

Mol	Chain	Non-H	H(model)	H(added)	Clashes	Symm-Clashes
1	A	608	0	631	29	0
1	B	573	0	588	24	0
1	C	601	0	622	18	0
1	D	561	0	579	35	0
1	E	589	0	610	27	0
1	F	574	0	595	32	0
1	G	580	0	602	32	0
2	A	4	0	3	2	0
2	C	4	0	3	0	0
2	D	4	0	3	0	0
2	E	4	0	3	4	0
2	F	4	0	3	1	0
3	C	8	0	10	2	0
3	D	8	0	10	4	0
3	E	8	0	10	1	0
3	F	12	0	16	3	0
3	G	8	0	12	4	0
4	A	53	0	0	4	0
4	B	35	0	0	2	0
4	C	23	0	0	2	0
4	D	23	0	0	3	0
4	E	56	0	0	1	0
4	F	28	0	0	1	0
4	G	55	0	0	2	0
All	All	4423	0	4300	175	0

The all-atom clashscore is defined as the number of clashes found per 1000 atoms (including hydrogen atoms). The all-atom clashscore for this structure is 21.

All (175) close contacts within the same asymmetric unit are listed below, sorted by their clash magnitude.

Atom-1	Atom-2	Interatomic distance (Å)	Clash overlap (Å)
1:F:11:VAL:HG12	1:F:12:GLN:H	1.05	1.13
1:B:37:ARG:HG3	1:B:57:LEU:HD13	1.33	1.11
1:B:37:ARG:NE	1:B:57:LEU:HD22	1.73	1.03

Continued on next page...

Continued from previous page...

Atom-1	Atom-2	Interatomic distance (Å)	Clash overlap (Å)
1:D:65:ARG:HH11	1:D:65:ARG:HG3	1.20	1.03
1:F:29:LYS:HZ1	1:F:33:ASP:HA	1.25	0.99
1:B:29:LYS:HE2	1:B:33:ASP:HA	1.43	0.98
1:F:11:VAL:HG12	1:F:12:GLN:N	1.85	0.91
1:A:33:ASP:O	4:A:1038:HOH:O	1.89	0.91
1:D:55:GLU:OE2	1:D:62:VAL:HG21	1.71	0.90
1:C:34:ARG:HD3	1:C:56:GLU:OE2	1.73	0.89
1:A:58:GLU:HA	4:A:1038:HOH:O	1.71	0.89
1:B:37:ARG:HE	1:B:57:LEU:HD22	1.34	0.88
1:D:16:ASP:HB2	4:D:2027:HOH:O	1.75	0.86
1:E:81:ARG:HH11	1:E:81:ARG:HG3	1.41	0.86
1:D:13:ARG:N	4:D:2027:HOH:O	2.08	0.83
1:F:29:LYS:NZ	1:F:33:ASP:HA	1.94	0.81
1:D:65:ARG:HG3	1:D:65:ARG:NH1	1.90	0.80
1:E:28:ILE:HD12	1:E:51:LEU:HD11	1.63	0.80
1:C:45:LEU:H	1:C:45:LEU:HD23	1.44	0.79
1:F:62:VAL:HG11	1:F:65:ARG:HE	1.47	0.79
1:C:12:GLN:HG2	3:D:2001:EDO:H22	1.61	0.79
1:D:34:ARG:HD3	1:D:56:GLU:OE2	1.83	0.78
1:E:34:ARG:NE	1:E:34:ARG:HA	1.97	0.78
1:G:29:LYS:HE2	1:G:33:ASP:HA	1.67	0.77
1:B:37:ARG:CG	1:B:57:LEU:HD13	2.14	0.75
1:A:45:LEU:C	1:A:45:LEU:HD22	2.07	0.75
1:E:81:ARG:HG3	1:E:81:ARG:NH1	1.97	0.73
1:D:55:GLU:HG2	1:D:65:ARG:HD3	1.72	0.71
1:B:34:ARG:HG2	1:B:36:PHE:CE1	2.24	0.71
1:G:41:LYS:HE3	1:G:52:ASN:HD22	1.55	0.71
1:E:81:ARG:HD2	4:E:2017:HOH:O	1.89	0.71
1:F:11:VAL:N	1:F:20:ASN:HD21	1.90	0.70
1:A:75:ASN:OD1	1:G:31:LYS:HE2	1.92	0.69
1:E:32:GLY:H	2:E:1003:ACY:H3	1.56	0.69
1:D:43:PHE:O	3:D:2001:EDO:H12	1.93	0.68
2:F:1005:ACY:H3	1:G:43:PHE:H	1.59	0.68
1:A:34:ARG:HH22	1:G:29:LYS:HZ2	1.40	0.67
1:E:28:ILE:CD1	1:E:51:LEU:HD11	2.24	0.67
1:F:11:VAL:CG1	1:F:12:GLN:H	1.93	0.67
1:A:48:ASN:HD22	1:A:73:GLY:H	1.43	0.67
1:C:52:ASN:HD22	3:C:2004:EDO:H11	1.59	0.67
1:A:45:LEU:HD22	1:A:46:HIS:N	2.10	0.66
1:F:15:LEU:HD23	4:G:2014:HOH:O	1.95	0.66
1:G:31:LYS:O	4:G:2044:HOH:O	2.12	0.65

Continued on next page...

Continued from previous page...

Atom-1	Atom-2	Interatomic distance (Å)	Clash overlap (Å)
1:G:29:LYS:CE	1:G:33:ASP:HA	2.25	0.65
1:G:46:HIS:CE1	3:G:2010:EDO:H12	2.32	0.65
1:A:45:LEU:HD12	4:A:1023:HOH:O	1.97	0.65
4:A:1029:HOH:O	1:G:13:ARG:HB3	1.96	0.64
1:C:33:ASP:N	1:C:33:ASP:OD1	2.30	0.64
1:G:41:LYS:HE3	1:G:52:ASN:ND2	2.13	0.63
1:A:30:LEU:HD11	1:A:36:PHE:HE1	1.65	0.62
1:A:47:MET:HE1	1:B:72:ARG:HG3	1.82	0.62
1:E:81:ARG:HH11	1:E:81:ARG:CG	2.10	0.61
1:A:47:MET:CE	1:B:72:ARG:HG3	2.31	0.61
1:F:36:PHE:CE2	1:F:66:LEU:HD22	2.37	0.60
1:A:34:ARG:HH22	1:G:29:LYS:NZ	2.00	0.59
1:D:14:PRO:HB3	1:E:70:LEU:CD1	2.31	0.59
1:B:31:LYS:HE2	1:C:75:ASN:OD1	2.03	0.59
1:B:29:LYS:C	1:B:29:LYS:HD3	2.23	0.59
1:A:45:LEU:HD21	1:A:46:HIS:CE1	2.38	0.59
1:C:52:ASN:HD22	3:C:2004:EDO:C1	2.15	0.59
1:F:52:ASN:HB3	3:F:2002:EDO:H22	1.85	0.59
1:A:48:ASN:ND2	1:A:73:GLY:H	2.01	0.58
1:C:65:ARG:NH1	4:C:2027:HOH:O	2.13	0.58
1:B:29:LYS:HE2	1:B:33:ASP:CA	2.26	0.58
1:F:36:PHE:HE2	1:F:66:LEU:HD22	1.67	0.58
1:D:65:ARG:NH1	1:D:65:ARG:CG	2.62	0.58
1:G:29:LYS:NZ	1:G:33:ASP:OD1	2.35	0.58
1:F:62:VAL:CG1	1:F:65:ARG:HE	2.16	0.57
1:G:46:HIS:NE2	3:G:2010:EDO:H12	2.20	0.57
1:A:30:LEU:O	1:A:32:GLY:N	2.38	0.56
1:G:64:ARG:HG3	1:G:65:ARG:N	2.20	0.56
1:A:32:GLY:O	1:A:34:ARG:N	2.36	0.55
1:G:29:LYS:HE2	1:G:33:ASP:CA	2.36	0.54
1:G:34:ARG:HD3	1:G:36:PHE:HZ	1.72	0.54
1:D:23:ASN:ND2	4:D:2022:HOH:O	2.34	0.54
1:G:34:ARG:NH1	1:G:56:GLU:OE1	2.36	0.54
1:B:14:PRO:HD2	4:B:92:HOH:O	2.07	0.53
1:C:27:ILE:HD13	1:D:64:ARG:NH2	2.22	0.53
1:E:77:VAL:HG11	3:F:2003:EDO:H22	1.91	0.53
1:E:64:ARG:HD3	1:E:66:LEU:HD21	1.89	0.53
1:B:15:LEU:O	1:B:18:LEU:HB2	2.09	0.52
1:F:18:LEU:HG	1:G:70:LEU:HD23	1.92	0.52
1:G:13:ARG:HG3	1:G:16:ASP:OD2	2.09	0.52
1:G:29:LYS:CE	1:G:33:ASP:OD1	2.57	0.52

Continued on next page...

Continued from previous page...

Atom-1	Atom-2	Interatomic distance (Å)	Clash overlap (Å)
1:A:49:LEU:C	1:A:49:LEU:HD12	2.30	0.52
1:E:34:ARG:NE	1:E:34:ARG:CA	2.71	0.52
1:A:12:GLN:HE22	1:B:44:ASP:HA	1.74	0.51
1:A:45:LEU:C	1:A:45:LEU:CD2	2.76	0.51
1:D:14:PRO:HB3	1:E:70:LEU:HD13	1.92	0.51
1:F:15:LEU:HD22	1:F:15:LEU:N	2.25	0.51
1:E:75:ASN:HB3	3:E:2008:EDO:H12	1.92	0.51
1:D:34:ARG:HG3	1:D:58:GLU:OE2	2.10	0.51
1:B:29:LYS:HE3	1:B:34:ARG:O	2.10	0.51
1:D:15:LEU:HD23	1:D:45:LEU:HD22	1.93	0.51
1:D:57:LEU:N	1:D:57:LEU:HD12	2.26	0.51
1:B:12:GLN:HG3	4:B:111:HOH:O	2.11	0.51
1:E:47:MET:HE3	1:E:79:ILE:HD12	1.93	0.50
1:D:24:SER:HB3	1:D:81:ARG:HH22	1.76	0.50
1:E:34:ARG:HA	1:E:34:ARG:HE	1.72	0.50
1:E:47:MET:SD	1:F:72:ARG:HG2	2.52	0.50
1:B:32:GLY:O	1:B:33:ASP:HB2	2.10	0.50
1:D:24:SER:CB	1:D:81:ARG:HH22	2.24	0.50
1:B:45:LEU:HD12	1:B:45:LEU:C	2.32	0.50
1:D:34:ARG:HD2	1:D:36:PHE:CZ	2.48	0.49
1:B:37:ARG:CZ	1:B:57:LEU:HD22	2.39	0.49
1:A:17:ALA:HB1	2:A:1002:ACY:H2	1.94	0.49
1:E:10:ASN:HB3	1:E:13:ARG:HB2	1.93	0.49
1:F:66:LEU:HD12	1:F:66:LEU:N	2.28	0.49
1:C:34:ARG:HD2	1:C:36:PHE:CE1	2.47	0.49
1:F:66:LEU:HD12	1:F:66:LEU:H	1.78	0.48
1:G:72:ARG:NH2	3:G:2011:EDO:O2	2.33	0.48
1:C:65:ARG:NH2	4:C:2027:HOH:O	2.43	0.48
1:D:55:GLU:OE2	1:D:62:VAL:CG2	2.54	0.48
1:D:55:GLU:HG2	1:D:65:ARG:CD	2.40	0.48
1:E:31:LYS:HA	2:E:1003:ACY:H1	1.96	0.48
1:A:17:ALA:CB	2:A:1002:ACY:H2	2.44	0.48
1:G:64:ARG:HG2	1:G:66:LEU:HG	1.95	0.48
1:D:13:ARG:HD2	1:E:43:PHE:O	2.14	0.47
1:A:15:LEU:HD12	1:A:18:LEU:HD12	1.97	0.47
1:F:36:PHE:CE2	1:F:66:LEU:HD13	2.48	0.47
1:F:29:LYS:HZ1	1:F:33:ASP:CA	2.12	0.47
1:E:45:LEU:C	1:E:45:LEU:HD12	2.35	0.47
1:G:29:LYS:HE2	1:G:33:ASP:OD1	2.14	0.47
1:A:34:ARG:NH2	1:G:29:LYS:NZ	2.63	0.47
1:D:34:ARG:HA	1:D:58:GLU:OE1	2.15	0.47

Continued on next page...

Continued from previous page...

Atom-1	Atom-2	Interatomic distance (Å)	Clash overlap (Å)
1:C:10:ASN:HB3	1:C:13:ARG:HB2	1.97	0.47
1:F:76:ILE:O	1:G:72:ARG:HD3	2.14	0.46
1:G:65:ARG:HH11	1:G:65:ARG:HG2	1.80	0.46
1:F:57:LEU:O	4:F:2031:HOH:O	2.21	0.46
1:G:34:ARG:HD3	1:G:36:PHE:CZ	2.50	0.46
1:D:75:ASN:OD1	3:D:2006:EDO:H22	2.17	0.45
1:A:34:ARG:NH2	1:G:29:LYS:HZ2	2.10	0.45
1:C:12:GLN:CG	3:D:2001:EDO:H22	2.40	0.45
1:E:24:SER:OG	1:E:81:ARG:HD3	2.17	0.45
1:E:32:GLY:N	2:E:1003:ACY:H3	2.29	0.45
1:C:47:MET:SD	1:D:72:ARG:HG2	2.57	0.45
1:D:14:PRO:HB3	1:E:70:LEU:HD11	1.98	0.45
1:E:47:MET:CE	1:E:79:ILE:HD12	2.47	0.45
1:B:47:MET:CE	1:B:79:ILE:HD12	2.47	0.45
1:F:15:LEU:N	1:F:15:LEU:CD2	2.80	0.45
1:D:81:ARG:CG	1:D:81:ARG:HH11	2.30	0.45
1:F:11:VAL:CG1	1:F:12:GLN:N	2.60	0.44
1:B:29:LYS:HZ2	1:B:29:LYS:HG2	1.67	0.44
1:F:58:GLU:C	1:F:60:GLY:H	2.21	0.44
1:C:31:LYS:HZ3	1:C:31:LYS:HG3	1.65	0.44
1:F:37:ARG:HD2	1:F:57:LEU:CD1	2.47	0.43
1:A:30:LEU:CD1	1:A:36:PHE:HE1	2.29	0.43
1:G:18:LEU:HD23	1:G:18:LEU:HA	1.67	0.43
1:D:66:LEU:HD23	1:D:69:VAL:HB	2.00	0.43
1:G:45:LEU:HD12	1:G:45:LEU:C	2.38	0.43
1:C:45:LEU:H	1:C:45:LEU:CD2	2.23	0.43
1:B:18:LEU:HD23	1:B:18:LEU:HA	1.84	0.42
1:A:34:ARG:HH22	1:G:29:LYS:CE	2.32	0.42
1:D:34:ARG:HD2	1:D:36:PHE:CE1	2.54	0.42
1:F:37:ARG:HD2	1:F:57:LEU:HD13	2.00	0.42
1:F:52:ASN:CB	3:F:2002:EDO:H22	2.48	0.42
1:A:15:LEU:HD13	1:A:15:LEU:HA	1.84	0.41
1:D:81:ARG:NH1	1:D:81:ARG:HG2	2.34	0.41
1:F:45:LEU:O	3:G:2010:EDO:C2	2.68	0.41
1:E:31:LYS:HA	2:E:1003:ACY:CH3	2.51	0.41
1:C:18:LEU:HD23	1:C:18:LEU:HA	1.81	0.41
1:D:23:ASN:ND2	1:D:41:LYS:NZ	2.69	0.41
1:F:58:GLU:C	1:F:60:GLY:N	2.73	0.41
1:A:9:VAL:HG21	1:B:41:LYS:HB3	2.02	0.41
1:D:73:GLY:HA2	1:D:76:ILE:HD12	2.02	0.41
1:A:58:GLU:O	1:A:59:ASP:HB2	2.20	0.41

Continued on next page...

Continued from previous page...

Atom-1	Atom-2	Interatomic distance (Å)	Clash overlap (Å)
1:G:34:ARG:CD	1:G:36:PHE:CZ	3.03	0.41
1:B:34:ARG:HG2	1:B:36:PHE:HE1	1.82	0.40
1:D:22:LEU:HD23	1:D:22:LEU:HA	1.97	0.40
1:E:76:ILE:O	1:F:72:ARG:HD3	2.21	0.40
1:D:81:ARG:CG	1:D:81:ARG:NH1	2.84	0.40
1:F:62:VAL:HG11	1:F:65:ARG:NE	2.25	0.40
1:C:29:LYS:HG2	1:D:34:ARG:HH12	1.86	0.40
1:F:25:PRO:HG2	1:F:83:LYS:HA	2.04	0.40

There are no symmetry-related clashes.

5.3 Torsion angles [i](#)

5.3.1 Protein backbone [i](#)

In the following table, the Percentiles column shows the percent Ramachandran outliers of the chain as a percentile score with respect to all X-ray entries followed by that with respect to entries of similar resolution.

The Analysed column shows the number of residues for which the backbone conformation was analysed, and the total number of residues.

Mol	Chain	Analysed	Favoured	Allowed	Outliers	Percentiles	
1	A	76/86 (88%)	73 (96%)	0	3 (4%)	3	0
1	B	71/86 (83%)	69 (97%)	1 (1%)	1 (1%)	11	3
1	C	75/86 (87%)	74 (99%)	1 (1%)	0	100	100
1	D	69/86 (80%)	65 (94%)	3 (4%)	1 (1%)	11	3
1	E	73/86 (85%)	73 (100%)	0	0	100	100
1	F	71/86 (83%)	69 (97%)	2 (3%)	0	100	100
1	G	72/86 (84%)	71 (99%)	1 (1%)	0	100	100
All	All	507/602 (84%)	494 (97%)	8 (2%)	5 (1%)	15	5

All (5) Ramachandran outliers are listed below:

Mol	Chain	Res	Type
1	A	31	LYS
1	A	33	ASP
1	D	60	GLY

Continued on next page...

Continued from previous page...

Mol	Chain	Res	Type
1	B	64	ARG
1	A	11	VAL

5.3.2 Protein sidechains [i](#)

In the following table, the Percentiles column shows the percent sidechain outliers of the chain as a percentile score with respect to all X-ray entries followed by that with respect to entries of similar resolution.

The Analysed column shows the number of residues for which the sidechain conformation was analysed, and the total number of residues.

Mol	Chain	Analysed	Rotameric	Outliers	Percentiles	
1	A	67/75 (89%)	65 (97%)	2 (3%)	41	24
1	B	64/75 (85%)	59 (92%)	5 (8%)	12	2
1	C	66/75 (88%)	62 (94%)	4 (6%)	18	5
1	D	63/75 (84%)	60 (95%)	3 (5%)	25	10
1	E	66/75 (88%)	63 (96%)	3 (4%)	27	11
1	F	64/75 (85%)	60 (94%)	4 (6%)	18	4
1	G	64/75 (85%)	61 (95%)	3 (5%)	26	10
All	All	454/525 (86%)	430 (95%)	24 (5%)	22	8

All (24) residues with a non-rotameric sidechain are listed below:

Mol	Chain	Res	Type
1	A	45	LEU
1	A	63	THR
1	B	12	GLN
1	B	29	LYS
1	B	57	LEU
1	B	64	ARG
1	B	81	ARG
1	C	15	LEU
1	C	33	ASP
1	C	34	ARG
1	C	45	LEU
1	D	57	LEU
1	D	58	GLU
1	D	81	ARG
1	E	15	LEU

Continued on next page...

Continued from previous page...

Mol	Chain	Res	Type
1	E	81	ARG
1	E	83	LYS
1	F	12	GLN
1	F	18	LEU
1	F	61	GLU
1	F	81	ARG
1	G	13	ARG
1	G	63	THR
1	G	70	LEU

Sometimes sidechains can be flipped to improve hydrogen bonding and reduce clashes. All (6) such sidechains are listed below:

Mol	Chain	Res	Type
1	A	12	GLN
1	A	48	ASN
1	B	20	ASN
1	C	52	ASN
1	D	23	ASN
1	F	75	ASN

5.3.3 RNA [i](#)

There are no RNA molecules in this entry.

5.4 Non-standard residues in protein, DNA, RNA chains [i](#)

There are no non-standard protein/DNA/RNA residues in this entry.

5.5 Carbohydrates [i](#)

There are no monosaccharides in this entry.

5.6 Ligand geometry [i](#)

16 ligands are modelled in this entry.

In the following table, the Counts columns list the number of bonds (or angles) for which Mogul statistics could be retrieved, the number of bonds (or angles) that are observed in the model and the number of bonds (or angles) that are defined in the Chemical Component Dictionary. The

Link column lists molecule types, if any, to which the group is linked. The Z score for a bond length (or angle) is the number of standard deviations the observed value is removed from the expected value. A bond length (or angle) with $|Z| > 2$ is considered an outlier worth inspection. RMSZ is the root-mean-square of all Z scores of the bond lengths (or angles).

Mol	Type	Chain	Res	Link	Bond lengths			Bond angles		
					Counts	RMSZ	# Z > 2	Counts	RMSZ	# Z > 2
3	EDO	D	2001	-	3,3,3	1.75	1 (33%)	2,2,2	0.26	0
3	EDO	E	2005	-	3,3,3	1.57	1 (33%)	2,2,2	0.73	0
2	ACY	D	1004	-	3,3,3	1.24	1 (33%)	3,3,3	1.72	1 (33%)
2	ACY	A	1002	-	3,3,3	1.42	1 (33%)	3,3,3	2.08	1 (33%)
3	EDO	F	2009	-	3,3,3	2.08	1 (33%)	2,2,2	0.41	0
3	EDO	C	2004	-	3,3,3	1.70	1 (33%)	2,2,2	0.59	0
3	EDO	D	2006	-	3,3,3	1.65	1 (33%)	2,2,2	0.36	0
2	ACY	F	1005	-	3,3,3	1.48	1 (33%)	3,3,3	1.95	1 (33%)
3	EDO	G	2010	-	3,3,3	1.94	1 (33%)	2,2,2	0.65	0
3	EDO	G	2011	-	3,3,3	1.76	1 (33%)	2,2,2	1.03	0
3	EDO	C	2007	-	3,3,3	1.82	1 (33%)	2,2,2	0.49	0
3	EDO	E	2008	-	3,3,3	1.72	1 (33%)	2,2,2	0.31	0
3	EDO	F	2003	-	3,3,3	1.73	1 (33%)	2,2,2	0.40	0
3	EDO	F	2002	-	3,3,3	1.66	1 (33%)	2,2,2	0.52	0
2	ACY	C	1001	-	3,3,3	1.72	1 (33%)	3,3,3	1.91	1 (33%)
2	ACY	E	1003	-	3,3,3	1.39	1 (33%)	3,3,3	2.01	1 (33%)

In the following table, the Chirals column lists the number of chiral outliers, the number of chiral centers analysed, the number of these observed in the model and the number defined in the Chemical Component Dictionary. Similar counts are reported in the Torsion and Rings columns. '-' means no outliers of that kind were identified.

Mol	Type	Chain	Res	Link	Chirals	Torsions	Rings
3	EDO	E	2005	-	-	1/1/1/1	-
3	EDO	F	2009	-	-	1/1/1/1	-
3	EDO	C	2004	-	-	1/1/1/1	-
3	EDO	D	2006	-	-	1/1/1/1	-
3	EDO	G	2010	-	-	1/1/1/1	-
3	EDO	G	2011	-	-	1/1/1/1	-
3	EDO	C	2007	-	-	1/1/1/1	-
3	EDO	E	2008	-	-	1/1/1/1	-
3	EDO	F	2003	-	-	1/1/1/1	-
3	EDO	F	2002	-	-	1/1/1/1	-
3	EDO	D	2001	-	-	1/1/1/1	-

All (16) bond length outliers are listed below:

Mol	Chain	Res	Type	Atoms	Z	Observed(Å)	Ideal(Å)
3	F	2009	EDO	O2-C2	3.43	1.59	1.42
3	G	2010	EDO	O2-C2	3.21	1.58	1.42
3	C	2007	EDO	O2-C2	2.83	1.56	1.42
3	G	2011	EDO	O2-C2	2.82	1.56	1.42
2	C	1001	ACY	O-C	2.78	1.35	1.22
3	D	2001	EDO	O2-C2	2.59	1.55	1.42
3	C	2004	EDO	O2-C2	2.51	1.55	1.42
3	E	2008	EDO	O2-C2	2.44	1.54	1.42
3	F	2003	EDO	O2-C2	2.40	1.54	1.42
3	D	2006	EDO	O2-C2	2.40	1.54	1.42
3	F	2002	EDO	O2-C2	2.31	1.54	1.42
2	E	1003	ACY	O-C	2.27	1.32	1.22
2	F	1005	ACY	O-C	2.26	1.32	1.22
3	E	2005	EDO	O2-C2	2.24	1.53	1.42
2	A	1002	ACY	O-C	2.19	1.32	1.22
2	D	1004	ACY	O-C	2.00	1.31	1.22

All (5) bond angle outliers are listed below:

Mol	Chain	Res	Type	Atoms	Z	Observed(°)	Ideal(°)
2	A	1002	ACY	O-C-CH3	-2.87	111.15	122.33
2	E	1003	ACY	O-C-CH3	-2.75	111.64	122.33
2	F	1005	ACY	O-C-CH3	-2.71	111.80	122.33
2	C	1001	ACY	O-C-CH3	-2.60	112.20	122.33
2	D	1004	ACY	O-C-CH3	-2.36	113.15	122.33

There are no chirality outliers.

All (11) torsion outliers are listed below:

Mol	Chain	Res	Type	Atoms
3	C	2004	EDO	O1-C1-C2-O2
3	C	2007	EDO	O1-C1-C2-O2
3	D	2001	EDO	O1-C1-C2-O2
3	D	2006	EDO	O1-C1-C2-O2
3	E	2005	EDO	O1-C1-C2-O2
3	E	2008	EDO	O1-C1-C2-O2
3	F	2009	EDO	O1-C1-C2-O2
3	G	2010	EDO	O1-C1-C2-O2
3	G	2011	EDO	O1-C1-C2-O2
3	F	2002	EDO	O1-C1-C2-O2
3	F	2003	EDO	O1-C1-C2-O2

There are no ring outliers.

11 monomers are involved in 21 short contacts:

Mol	Chain	Res	Type	Clashes	Symm-Clashes
3	D	2001	EDO	3	0
2	A	1002	ACY	2	0
3	C	2004	EDO	2	0
3	D	2006	EDO	1	0
2	F	1005	ACY	1	0
3	G	2010	EDO	3	0
3	G	2011	EDO	1	0
3	E	2008	EDO	1	0
3	F	2003	EDO	1	0
3	F	2002	EDO	2	0
2	E	1003	ACY	4	0

5.7 Other polymers [i](#)

There are no such residues in this entry.

5.8 Polymer linkage issues [i](#)

There are no chain breaks in this entry.

6 Fit of model and data [i](#)

6.1 Protein, DNA and RNA chains [i](#)

In the following table, the column labelled ‘#RSRZ> 2’ contains the number (and percentage) of RSRZ outliers, followed by percent RSRZ outliers for the chain as percentile scores relative to all X-ray entries and entries of similar resolution. The OWAB column contains the minimum, median, 95th percentile and maximum values of the occupancy-weighted average B-factor per residue. The column labelled ‘Q< 0.9’ lists the number of (and percentage) of residues with an average occupancy less than 0.9.

Mol	Chain	Analysed	<RSRZ>	#RSRZ>2	OWAB(Å ²)	Q<0.9
1	A	78/86 (90%)	-0.11	1 (1%) 77 78	13, 22, 42, 49	0
1	B	73/86 (84%)	-0.02	4 (5%) 25 24	15, 27, 50, 53	0
1	C	77/86 (89%)	-0.11	0 100 100	13, 23, 44, 47	0
1	D	71/86 (82%)	0.12	2 (2%) 53 52	16, 30, 56, 64	0
1	E	75/86 (87%)	-0.28	0 100 100	13, 22, 38, 44	0
1	F	73/86 (84%)	-0.05	3 (4%) 37 35	14, 27, 52, 60	0
1	G	74/86 (86%)	-0.20	2 (2%) 54 53	12, 22, 46, 54	0
All	All	521/602 (86%)	-0.09	12 (2%) 60 59	12, 25, 49, 64	0

All (12) RSRZ outliers are listed below:

Mol	Chain	Res	Type	RSRZ
1	F	11	VAL	3.6
1	B	82	GLY	3.3
1	D	59	ASP	3.2
1	B	11	VAL	3.0
1	G	61	GLU	2.6
1	B	57	LEU	2.5
1	F	59	ASP	2.5
1	G	85	ALA	2.5
1	A	9	VAL	2.5
1	B	10	ASN	2.5
1	D	11	VAL	2.4
1	F	83	LYS	2.2

6.2 Non-standard residues in protein, DNA, RNA chains [i](#)

There are no non-standard protein/DNA/RNA residues in this entry.

6.3 Carbohydrates [i](#)

There are no monosaccharides in this entry.

6.4 Ligands [i](#)

In the following table, the Atoms column lists the number of modelled atoms in the group and the number defined in the chemical component dictionary. The B-factors column lists the minimum, median, 95th percentile and maximum values of B factors of atoms in the group. The column labelled 'Q< 0.9' lists the number of atoms with occupancy less than 0.9.

Mol	Type	Chain	Res	Atoms	RSCC	RSR	B-factors(\AA^2)	Q<0.9
2	ACY	F	1005	4/4	0.64	0.36	52,53,53,53	0
3	EDO	F	2002	4/4	0.70	0.35	52,52,53,53	0
3	EDO	F	2009	4/4	0.70	0.16	39,40,40,43	0
3	EDO	D	2001	4/4	0.78	0.25	52,53,53,54	0
3	EDO	C	2007	4/4	0.82	0.16	44,45,46,46	0
2	ACY	D	1004	4/4	0.83	0.20	63,63,64,64	0
3	EDO	C	2004	4/4	0.83	0.17	44,48,48,52	0
3	EDO	D	2006	4/4	0.84	0.28	53,53,54,55	0
2	ACY	E	1003	4/4	0.88	0.15	53,54,54,56	0
3	EDO	G	2010	4/4	0.88	0.18	31,39,39,40	0
3	EDO	G	2011	4/4	0.88	0.12	26,35,35,37	0
3	EDO	E	2008	4/4	0.91	0.39	45,45,46,47	0
2	ACY	C	1001	4/4	0.92	0.10	34,34,35,35	0
3	EDO	E	2005	4/4	0.95	0.16	45,45,45,47	0
3	EDO	F	2003	4/4	0.96	0.10	43,43,44,45	0
2	ACY	A	1002	4/4	0.96	0.13	35,37,38,38	0

6.5 Other polymers [i](#)

There are no such residues in this entry.