



Full wwPDB X-ray Structure Validation Report ⓘ

Aug 28, 2023 – 08:06 AM EDT

PDB ID : 3IXB
Title : X-ray crystal structure of the extended-spectrum AmpC E219K mutant beta-lactamase complexed with benzo(b)thiophene-2-boronic acid (BZB) at 1.63 Angstrom resolution
Authors : Shoichet, B.K.; Thomas, V.L.
Deposited on : 2009-09-03
Resolution : 1.63 Å(reported)

This is a Full wwPDB X-ray Structure Validation Report for a publicly released PDB entry.

We welcome your comments at validation@mail.wwpdb.org

A user guide is available at

<https://www.wwpdb.org/validation/2017/XrayValidationReportHelp>

with specific help available everywhere you see the ⓘ symbol.

The types of validation reports are described at

<http://www.wwpdb.org/validation/2017/FAQs#types>.

The following versions of software and data (see [references ⓘ](#)) were used in the production of this report:

MolProbity : 4.02b-467
Mogul : 1.8.5 (274361), CSD as541be (2020)
Xtriage (Phenix) : 1.13
EDS : 2.35
Percentile statistics : 20191225.v01 (using entries in the PDB archive December 25th 2019)
Refmac : 5.8.0158
CCP4 : 7.0.044 (Gargrove)
Ideal geometry (proteins) : Engh & Huber (2001)
Ideal geometry (DNA, RNA) : Parkinson et al. (1996)
Validation Pipeline (wwPDB-VP) : 2.35

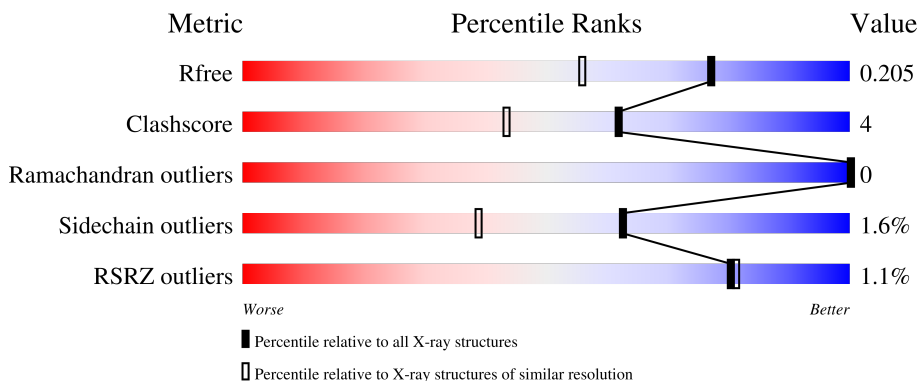
1 Overall quality at a glance

The following experimental techniques were used to determine the structure:

X-RAY DIFFRACTION

The reported resolution of this entry is 1.63 Å.

Percentile scores (ranging between 0-100) for global validation metrics of the entry are shown in the following graphic. The table shows the number of entries on which the scores are based.



Metric	Whole archive (#Entries)	Similar resolution (#Entries, resolution range(Å))
R_{free}	130704	3122 (1.66-1.62)
Clashscore	141614	3268 (1.66-1.62)
Ramachandran outliers	138981	3215 (1.66-1.62)
Sidechain outliers	138945	3215 (1.66-1.62)
RSRZ outliers	127900	3079 (1.66-1.62)

The table below summarises the geometric issues observed across the polymeric chains and their fit to the electron density. The red, orange, yellow and green segments of the lower bar indicate the fraction of residues that contain outliers for ≥ 3 , 2, 1 and 0 types of geometric quality criteria respectively. A grey segment represents the fraction of residues that are not modelled. The numeric value for each fraction is indicated below the corresponding segment, with a dot representing fractions $\leq 5\%$. The upper red bar (where present) indicates the fraction of residues that have poor fit to the electron density. The numeric value is given above the bar.

Mol	Chain	Length	Quality of chain
1	A	358	
1	B	358	

2 Entry composition [i](#)

There are 4 unique types of molecules in this entry. The entry contains 6482 atoms, of which 0 are hydrogens and 0 are deuteriums.

In the tables below, the ZeroOcc column contains the number of atoms modelled with zero occupancy, the AltConf column contains the number of residues with at least one atom in alternate conformation and the Trace column contains the number of residues modelled with at most 2 atoms.

- Molecule 1 is a protein called Beta-lactamase.

Mol	Chain	Residues	Atoms					ZeroOcc	AltConf	Trace
			Total	C	N	O	S			
1	B	358	2821	1819	482	514	6	0	3	0
1	A	352	2770	1791	470	503	6	0	2	0

There are 2 discrepancies between the modelled and reference sequences:

Chain	Residue	Modelled	Actual	Comment	Reference
B	219	LYS	GLU	engineered mutation	UNP P00811
A	219	LYS	GLU	engineered mutation	UNP P00811

- Molecule 2 is PHOSPHATE ION (three-letter code: PO4) (formula: O₄P).



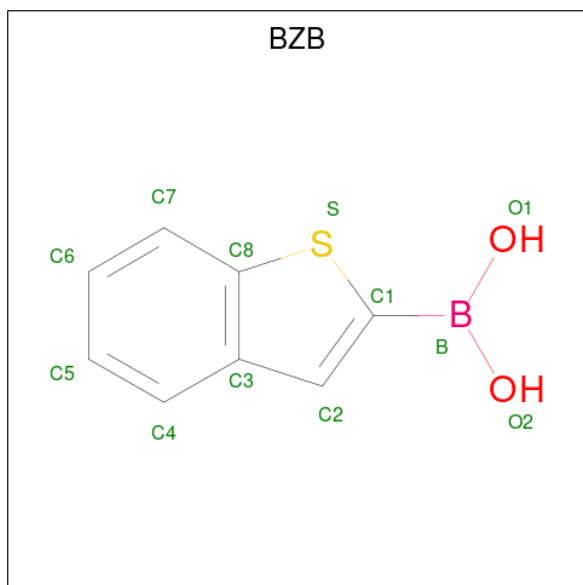
Mol	Chain	Residues	Atoms			ZeroOcc	AltConf
			Total	O	P		
2	B	1	5	4	1	0	0

Continued on next page...

Continued from previous page...

Mol	Chain	Residues	Atoms			ZeroOcc	AltConf
2	A	1	Total	O	P	0	0
			5	4	1		

- Molecule 3 is BENZO[B]THIOPHENE-2-BORONIC ACID (three-letter code: BZB) (formula: C₈H₇BO₂S).



Mol	Chain	Residues	Atoms					ZeroOcc	AltConf
3	B	1	Total	B	C	O	S	0	0
			12	1	8	2	1		
3	A	1	Total	B	C	O	S	0	0
			12	1	8	2	1		

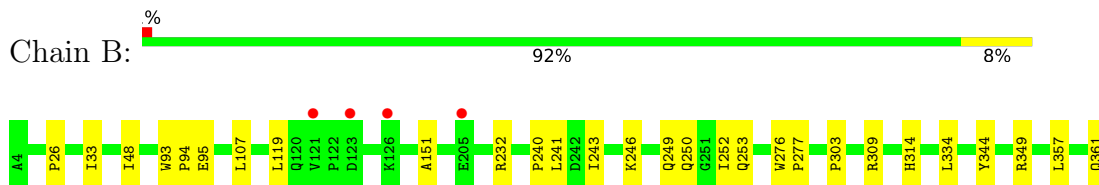
- Molecule 4 is water.

Mol	Chain	Residues	Atoms		ZeroOcc	AltConf
4	B	424	Total	O	0	0
			424	424		
4	A	433	Total	O	0	0
			433	433		

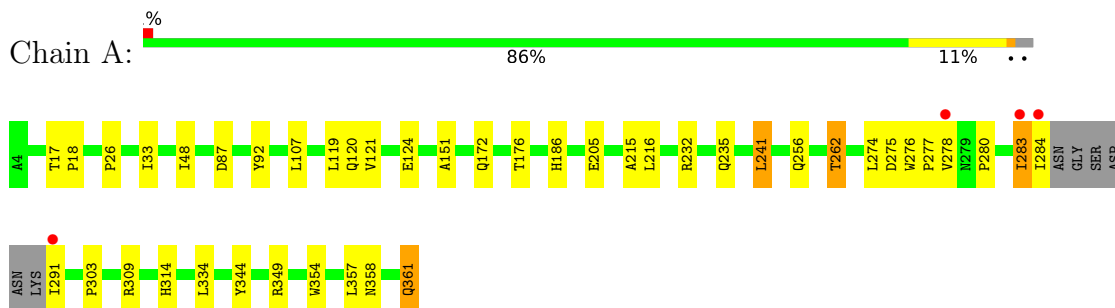
3 Residue-property plots [i](#)

These plots are drawn for all protein, RNA, DNA and oligosaccharide chains in the entry. The first graphic for a chain summarises the proportions of the various outlier classes displayed in the second graphic. The second graphic shows the sequence view annotated by issues in geometry and electron density. Residues are color-coded according to the number of geometric quality criteria for which they contain at least one outlier: green = 0, yellow = 1, orange = 2 and red = 3 or more. A red dot above a residue indicates a poor fit to the electron density ($RSRZ > 2$). Stretches of 2 or more consecutive residues without any outlier are shown as a green connector. Residues present in the sample, but not in the model, are shown in grey.

- Molecule 1: Beta-lactamase



- Molecule 1: Beta-lactamase



4 Data and refinement statistics

Property	Value	Source
Space group	C 1 2 1	Depositor
Cell constants a, b, c, α , β , γ	117.06Å 77.41Å 97.23Å 90.00° 115.58° 90.00°	Depositor
Resolution (Å)	30.00 – 1.63 58.39 – 1.63	Depositor EDS
% Data completeness (in resolution range)	99.8 (30.00-1.63) 99.8 (58.39-1.63)	Depositor EDS
R_{merge}	(Not available)	Depositor
R_{sym}	0.06	Depositor
$\langle I/\sigma(I) \rangle$ ¹	2.53 (at 1.63Å)	Xtrriage
Refinement program	REFMAC	Depositor
R, R_{free}	0.177 , 0.208 0.175 , 0.205	Depositor DCC
R_{free} test set	4869 reflections (5.00%)	wwPDB-VP
Wilson B-factor (Å ²)	16.3	Xtrriage
Anisotropy	0.174	Xtrriage
Bulk solvent k_{sol} (e/Å ³), B_{sol} (Å ²)	0.36 , 47.0	EDS
L-test for twinning ²	$\langle L \rangle = 0.49$, $\langle L^2 \rangle = 0.32$	Xtrriage
Estimated twinning fraction	No twinning to report.	Xtrriage
F_o, F_c correlation	0.96	EDS
Total number of atoms	6482	wwPDB-VP
Average B, all atoms (Å ²)	17.0	wwPDB-VP

Xtrriage's analysis on translational NCS is as follows: *The largest off-origin peak in the Patterson function is 8.59% of the height of the origin peak. No significant pseudotranslation is detected.*

¹Intensities estimated from amplitudes.

²Theoretical values of $\langle |L| \rangle$, $\langle L^2 \rangle$ for acentric reflections are 0.5, 0.333 respectively for untwinned datasets, and 0.375, 0.2 for perfectly twinned datasets.

5 Model quality

5.1 Standard geometry

Bond lengths and bond angles in the following residue types are not validated in this section: PO4, BZB

The Z score for a bond length (or angle) is the number of standard deviations the observed value is removed from the expected value. A bond length (or angle) with $|Z| > 5$ is considered an outlier worth inspection. RMSZ is the root-mean-square of all Z scores of the bond lengths (or angles).

Mol	Chain	Bond lengths		Bond angles	
		RMSZ	# Z >5	RMSZ	# Z >5
1	A	0.49	0/2849	0.64	0/3890
1	B	0.46	0/2904	0.61	0/3965
All	All	0.48	0/5753	0.62	0/7855

There are no bond length outliers.

There are no bond angle outliers.

There are no chirality outliers.

There are no planarity outliers.

5.2 Too-close contacts

In the following table, the Non-H and H(model) columns list the number of non-hydrogen atoms and hydrogen atoms in the chain respectively. The H(added) column lists the number of hydrogen atoms added and optimized by MolProbity. The Clashes column lists the number of clashes within the asymmetric unit, whereas Symm-Clashes lists symmetry-related clashes.

Mol	Chain	Non-H	H(model)	H(added)	Clashes	Symm-Clashes
1	A	2770	0	2761	32	0
1	B	2821	0	2812	20	0
2	A	5	0	0	1	0
2	B	5	0	0	0	0
3	A	12	0	7	0	0
3	B	12	0	7	0	0
4	A	433	0	0	8	1
4	B	424	0	0	2	1
All	All	6482	0	5587	49	1

The all-atom clashscore is defined as the number of clashes found per 1000 atoms (including hydrogen atoms). The all-atom clashscore for this structure is 4.

All (49) close contacts within the same asymmetric unit are listed below, sorted by their clash magnitude.

Atom-1	Atom-2	Interatomic distance (Å)	Clash overlap (Å)
1:A:17:THR:HB	1:A:18:PRO:HD3	1.72	0.72
1:A:176:THR:HG21	4:A:1061:HOH:O	1.94	0.67
1:B:93:TRP:CD1	1:B:95:GLU:HG2	2.29	0.67
1:A:186:HIS:HE1	2:A:362:PO4:O2	1.79	0.65
1:B:243:ILE:HD13	1:B:252:ILE:HD12	1.81	0.62
1:B:243:ILE:CD1	1:B:252:ILE:HD12	2.31	0.61
1:A:186:HIS:HD2	4:A:378:HOH:O	1.82	0.60
1:A:334:LEU:HG	1:A:357:LEU:HD22	1.83	0.60
1:A:283:ILE:O	1:A:284:ILE:HG13	2.03	0.58
1:A:215[A]:ALA:O	1:A:216[A]:LEU:HB2	2.05	0.57
1:A:291:ILE:N	4:A:958:HOH:O	2.40	0.54
1:B:94:PRO:HD2	1:B:95:GLU:OE2	2.09	0.52
1:A:205:GLU:HG3	4:A:403:HOH:O	2.09	0.51
1:A:274:LEU:HD13	1:A:283:ILE:HG22	1.92	0.51
1:A:275:ASP:O	1:A:278:VAL:HG12	2.11	0.50
1:B:253:GLN:NE2	4:B:383:HOH:O	2.35	0.50
1:A:256:GLN:HG3	4:A:556:HOH:O	2.12	0.50
1:B:344:TYR:CE1	1:B:349:ARG:HG2	2.48	0.48
1:B:246:LYS:HB3	1:A:241:LEU:HD23	1.96	0.48
1:B:250:GLN:HG2	4:A:795:HOH:O	2.14	0.48
1:A:262:THR:O	1:A:262:THR:HG22	2.15	0.47
1:A:120:GLN:NE2	4:A:642:HOH:O	2.44	0.47
1:A:33:ILE:HG23	1:A:235:GLN:HE21	1.81	0.46
1:B:344:TYR:CZ	1:B:349:ARG:HG2	2.51	0.46
1:A:119:LEU:HA	1:A:151:ALA:HA	1.97	0.46
1:B:276:TRP:CD2	1:B:277:PRO:HA	2.51	0.46
1:A:280:PRO:HG3	1:A:354:TRP:CE2	2.51	0.46
1:B:303:PRO:HD3	1:A:107:LEU:HD22	1.98	0.46
1:B:334:LEU:HG	1:B:357:LEU:HD22	1.97	0.45
1:A:121:VAL:HG21	1:A:216[A]:LEU:HD12	1.98	0.45
1:B:33:ILE:HD12	1:B:33:ILE:N	2.31	0.45
1:A:215[A]:ALA:O	1:A:216[A]:LEU:CB	2.63	0.45
1:A:87:ASP:OD2	1:A:92:TYR:OH	2.33	0.44
1:B:107:LEU:HD22	1:A:303:PRO:HD3	1.99	0.44
1:A:276:TRP:CD2	1:A:277:PRO:HA	2.53	0.44
1:B:240:PRO:HG3	1:B:253:GLN:HE21	1.82	0.44
1:A:33:ILE:HD12	1:A:33:ILE:N	2.33	0.44
1:A:344:TYR:CZ	1:A:349:ARG:HG2	2.54	0.43
1:A:172:GLN:O	1:A:176:THR:HG23	2.19	0.43
1:A:26:PRO:HB3	1:A:48:ILE:HD11	2.01	0.42

Continued on next page...

Continued from previous page...

Atom-1	Atom-2	Interatomic distance (Å)	Clash overlap (Å)
1:A:358:ASN:O	1:A:361:GLN:NE2	2.53	0.41
1:A:262:THR:O	1:A:262:THR:CG2	2.67	0.41
1:B:26:PRO:HB3	1:B:48:ILE:HD11	2.03	0.41
1:B:241:LEU:HA	1:B:249:GLN:HG3	2.03	0.41
1:A:309:ARG:NH1	4:A:469:HOH:O	2.54	0.41
1:B:232:ARG:HG3	4:B:962:HOH:O	2.21	0.41
1:B:119:LEU:HA	1:B:151:ALA:HA	2.02	0.40
1:B:240:PRO:HA	1:B:243:ILE:HD12	2.03	0.40
1:A:124:GLU:H	1:A:124:GLU:CD	2.25	0.40

All (1) symmetry-related close contacts are listed below. The label for Atom-2 includes the symmetry operator and encoded unit-cell translations to be applied.

Atom-1	Atom-2	Interatomic distance (Å)	Clash overlap (Å)
4:B:544:HOH:O	4:A:435:HOH:O[2_556]	2.07	0.13

5.3 Torsion angles [i](#)

5.3.1 Protein backbone [i](#)

In the following table, the Percentiles column shows the percent Ramachandran outliers of the chain as a percentile score with respect to all X-ray entries followed by that with respect to entries of similar resolution.

The Analysed column shows the number of residues for which the backbone conformation was analysed, and the total number of residues.

Mol	Chain	Analysed	Favoured	Allowed	Outliers	Percentiles	
1	A	350/358 (98%)	343 (98%)	7 (2%)	0	100	100
1	B	359/358 (100%)	353 (98%)	6 (2%)	0	100	100
All	All	709/716 (99%)	696 (98%)	13 (2%)	0	100	100

There are no Ramachandran outliers to report.

5.3.2 Protein sidechains [i](#)

In the following table, the Percentiles column shows the percent sidechain outliers of the chain as a percentile score with respect to all X-ray entries followed by that with respect to entries of similar resolution.

The Analysed column shows the number of residues for which the sidechain conformation was analysed, and the total number of residues.

Mol	Chain	Analysed	Rotameric	Outliers	Percentiles	
1	A	288/292 (99%)	282 (98%)	6 (2%)	53	26
1	B	294/292 (101%)	291 (99%)	3 (1%)	76	59
All	All	582/584 (100%)	573 (98%)	9 (2%)	62	42

All (9) residues with a non-rotameric sidechain are listed below:

Mol	Chain	Res	Type
1	B	309	ARG
1	B	314	HIS
1	B	361	GLN
1	A	232	ARG
1	A	241	LEU
1	A	262	THR
1	A	283	ILE
1	A	314	HIS
1	A	361	GLN

Sometimes sidechains can be flipped to improve hydrogen bonding and reduce clashes. All (15) such sidechains are listed below:

Mol	Chain	Res	Type
1	B	7	GLN
1	B	23	GLN
1	B	137	ASN
1	B	190	ASN
1	B	253	GLN
1	B	361	GLN
1	A	22	GLN
1	A	23	GLN
1	A	102	ASN
1	A	137	ASN
1	A	186	HIS
1	A	235	GLN
1	A	249	GLN
1	A	355	GLN
1	A	361	GLN

5.3.3 RNA [i](#)

There are no RNA molecules in this entry.

5.4 Non-standard residues in protein, DNA, RNA chains [i](#)

There are no non-standard protein/DNA/RNA residues in this entry.

5.5 Carbohydrates [i](#)

There are no monosaccharides in this entry.

5.6 Ligand geometry [i](#)

4 ligands are modelled in this entry.

In the following table, the Counts columns list the number of bonds (or angles) for which Mogul statistics could be retrieved, the number of bonds (or angles) that are observed in the model and the number of bonds (or angles) that are defined in the Chemical Component Dictionary. The Link column lists molecule types, if any, to which the group is linked. The Z score for a bond length (or angle) is the number of standard deviations the observed value is removed from the expected value. A bond length (or angle) with $|Z| > 2$ is considered an outlier worth inspection. RMSZ is the root-mean-square of all Z scores of the bond lengths (or angles).

Mol	Type	Chain	Res	Link	Bond lengths			Bond angles		
					Counts	RMSZ	# Z > 2	Counts	RMSZ	# Z > 2
3	BZB	A	363	-	10,13,13	4.59	2 (20%)	8,18,18	2.16	3 (37%)
3	BZB	B	362	-	10,13,13	4.92	2 (20%)	8,18,18	1.87	2 (25%)
2	PO4	A	362	-	4,4,4	1.05	0	6,6,6	0.60	0
2	PO4	B	3	-	4,4,4	0.89	0	6,6,6	0.35	0

In the following table, the Chirals column lists the number of chiral outliers, the number of chiral centers analysed, the number of these observed in the model and the number defined in the Chemical Component Dictionary. Similar counts are reported in the Torsion and Rings columns. '-' means no outliers of that kind were identified.

Mol	Type	Chain	Res	Link	Chirals	Torsions	Rings
3	BZB	A	363	-	-	0/0/4/4	0/2/2/2
3	BZB	B	362	-	-	0/0/4/4	0/2/2/2

All (4) bond length outliers are listed below:

Mol	Chain	Res	Type	Atoms	Z	Observed(Å)	Ideal(Å)
3	B	362	BZB	B-O2	11.62	1.56	1.36
3	A	363	BZB	B-O2	11.07	1.55	1.36
3	B	362	BZB	B-O1	9.78	1.53	1.36
3	A	363	BZB	B-O1	8.79	1.51	1.36

All (5) bond angle outliers are listed below:

Mol	Chain	Res	Type	Atoms	Z	Observed(°)	Ideal(°)
3	A	363	BZB	O2-B-O1	-3.26	108.69	119.67
3	B	362	BZB	O2-B-C1	-3.15	111.00	120.58
3	A	363	BZB	O2-B-C1	-3.07	111.25	120.58
3	B	362	BZB	O2-B-O1	-2.81	110.20	119.67
3	A	363	BZB	C6-C5-C4	2.75	124.29	120.44

There are no chirality outliers.

There are no torsion outliers.

There are no ring outliers.

1 monomer is involved in 1 short contact:

Mol	Chain	Res	Type	Clashes	Symm-Clashes
2	A	362	PO4	1	0

5.7 Other polymers [i](#)

There are no such residues in this entry.

5.8 Polymer linkage issues [i](#)

There are no chain breaks in this entry.

6 Fit of model and data [i](#)

6.1 Protein, DNA and RNA chains [i](#)

In the following table, the column labelled ‘#RSRZ > 2’ contains the number (and percentage) of RSRZ outliers, followed by percent RSRZ outliers for the chain as percentile scores relative to all X-ray entries and entries of similar resolution. The OWAB column contains the minimum, median, 95th percentile and maximum values of the occupancy-weighted average B-factor per residue. The column labelled ‘Q < 0.9’ lists the number of (and percentage) of residues with an average occupancy less than 0.9.

Mol	Chain	Analysed	<RSRZ>	#RSRZ>2	OWAB(Å ²)	Q<0.9
1	A	352/358 (98%)	-0.13	4 (1%) 80 81	8, 14, 26, 41	0
1	B	358/358 (100%)	-0.31	4 (1%) 80 81	9, 15, 25, 30	5 (1%)
All	All	710/716 (99%)	-0.22	8 (1%) 80 81	8, 15, 25, 41	5 (0%)

All (8) RSRZ outliers are listed below:

Mol	Chain	Res	Type	RSRZ
1	A	284	ILE	4.5
1	A	283	ILE	3.3
1	B	123	ASP	2.7
1	A	291	ILE	2.6
1	B	126	LYS	2.4
1	B	205	GLU	2.3
1	B	121	VAL	2.2
1	A	278	VAL	2.1

6.2 Non-standard residues in protein, DNA, RNA chains [i](#)

There are no non-standard protein/DNA/RNA residues in this entry.

6.3 Carbohydrates [i](#)

There are no monosaccharides in this entry.

6.4 Ligands [i](#)

In the following table, the Atoms column lists the number of modelled atoms in the group and the number defined in the chemical component dictionary. The B-factors column lists the minimum,

median, 95th percentile and maximum values of B factors of atoms in the group. The column labelled 'Q< 0.9' lists the number of atoms with occupancy less than 0.9.

Mol	Type	Chain	Res	Atoms	RSCC	RSR	B-factors(Å ²)	Q<0.9
2	PO4	B	3	5/5	0.90	0.14	20,21,21,21	5
3	BZB	A	363	12/12	0.91	0.10	9,16,18,19	0
3	BZB	B	362	12/12	0.93	0.10	9,15,18,18	0
2	PO4	A	362	5/5	0.95	0.14	12,12,15,16	5

6.5 Other polymers [i](#)

There are no such residues in this entry.