



# Full wwPDB X-ray Structure Validation Report ⓘ

Sep 20, 2023 – 09:47 AM EDT

PDB ID : 5ITA  
Title : Crystal Structure of BRAF Kinase Domain Bound to AZ-VEM  
Authors : Wu, Y.; Gavathiotis, E.  
Deposited on : 2016-03-16  
Resolution : 1.95 Å(reported)

This is a Full wwPDB X-ray Structure Validation Report for a publicly released PDB entry.

We welcome your comments at [validation@mail.wwpdb.org](mailto:validation@mail.wwpdb.org)

A user guide is available at

<https://www.wwpdb.org/validation/2017/XrayValidationReportHelp>

with specific help available everywhere you see the ⓘ symbol.

The types of validation reports are described at

<http://www.wwpdb.org/validation/2017/FAQs#types>.

---

The following versions of software and data (see [references ⓘ](#)) were used in the production of this report:

MolProbity : 4.02b-467  
Mogul : 1.8.5 (274361), CSD as541be (2020)  
Xtriage (Phenix) : 1.13  
EDS : 2.35.1  
buster-report : 1.1.7 (2018)  
Percentile statistics : 20191225.v01 (using entries in the PDB archive December 25th 2019)  
Refmac : 5.8.0158  
CCP4 : 7.0.044 (Gargrove)  
Ideal geometry (proteins) : Engh & Huber (2001)  
Ideal geometry (DNA, RNA) : Parkinson et al. (1996)  
Validation Pipeline (wwPDB-VP) : 2.35.1

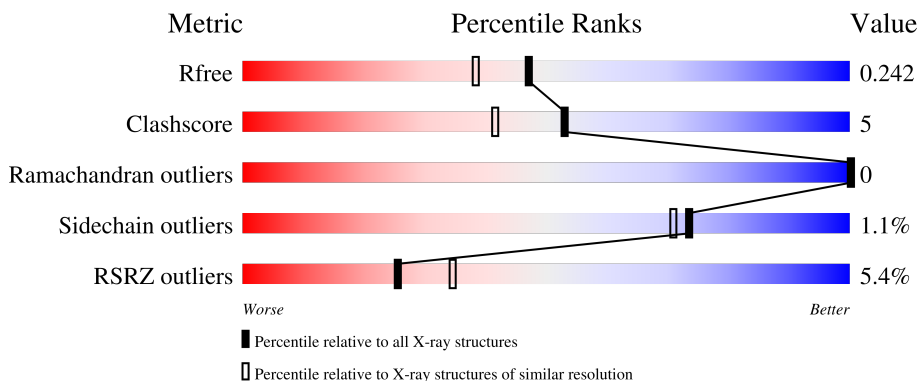
# 1 Overall quality at a glance

The following experimental techniques were used to determine the structure:

*X-RAY DIFFRACTION*

The reported resolution of this entry is 1.95 Å.

Percentile scores (ranging between 0-100) for global validation metrics of the entry are shown in the following graphic. The table shows the number of entries on which the scores are based.



Metric	Whole archive (#Entries)	Similar resolution (#Entries, resolution range(Å))
$R_{free}$	130704	2580 (1.96-1.96)
Clashscore	141614	2705 (1.96-1.96)
Ramachandran outliers	138981	2678 (1.96-1.96)
Sidechain outliers	138945	2678 (1.96-1.96)
RSRZ outliers	127900	2539 (1.96-1.96)

The table below summarises the geometric issues observed across the polymeric chains and their fit to the electron density. The red, orange, yellow and green segments of the lower bar indicate the fraction of residues that contain outliers for  $\geq 3$ , 2, 1 and 0 types of geometric quality criteria respectively. A grey segment represents the fraction of residues that are not modelled. The numeric value for each fraction is indicated below the corresponding segment, with a dot representing fractions  $\leq 5\%$ . The upper red bar (where present) indicates the fraction of residues that have poor fit to the electron density. The numeric value is given above the bar.

Mol	Chain	Length	Quality of chain
1	A	297	 5% 74% 9% 16%
1	B	297	 4% 73% 10% 15%

## 2 Entry composition i

There are 3 unique types of molecules in this entry. The entry contains 4177 atoms, of which 0 are hydrogens and 0 are deuteriums.

In the tables below, the ZeroOcc column contains the number of atoms modelled with zero occupancy, the AltConf column contains the number of residues with at least one atom in alternate conformation and the Trace column contains the number of residues modelled with at most 2 atoms.

- Molecule 1 is a protein called Serine/threonine-protein kinase B-raf.

Mol	Chain	Residues	Atoms					ZeroOcc	AltConf	Trace
			Total	C	N	O	S			
1	A	250	2003	1273	355	362	13	0	0	0
1	B	252	2019	1278	360	368	13	0	0	0

There are 74 discrepancies between the modelled and reference sequences:

Chain	Residue	Modelled	Actual	Comment	Reference
A	427	MET	-	initiating methionine	UNP P15056
A	428	GLY	-	expression tag	UNP P15056
A	429	SER	-	expression tag	UNP P15056
A	430	SER	-	expression tag	UNP P15056
A	431	HIS	-	expression tag	UNP P15056
A	432	HIS	-	expression tag	UNP P15056
A	433	HIS	-	expression tag	UNP P15056
A	434	HIS	-	expression tag	UNP P15056
A	435	HIS	-	expression tag	UNP P15056
A	436	HIS	-	expression tag	UNP P15056
A	437	SER	-	expression tag	UNP P15056
A	438	SER	-	expression tag	UNP P15056
A	439	GLY	-	expression tag	UNP P15056
A	440	LEU	-	expression tag	UNP P15056
A	441	VAL	-	expression tag	UNP P15056
A	442	PRO	-	expression tag	UNP P15056
A	443	ARG	-	expression tag	UNP P15056
A	444	GLY	-	expression tag	UNP P15056
A	445	SER	-	expression tag	UNP P15056
A	446	HIS	-	expression tag	UNP P15056
A	447	MET	-	expression tag	UNP P15056
A	543	ALA	ILE	engineered mutation	UNP P15056
A	544	SER	ILE	engineered mutation	UNP P15056
A	551	LYS	ILE	engineered mutation	UNP P15056
A	562	ARG	GLN	engineered mutation	UNP P15056

*Continued on next page...*

*Continued from previous page...*

Chain	Residue	Modelled	Actual	Comment	Reference
A	588	ASN	LEU	engineered mutation	UNP P15056
A	630	SER	LYS	engineered mutation	UNP P15056
A	667	GLU	PHE	engineered mutation	UNP P15056
A	673	SER	TYR	engineered mutation	UNP P15056
A	688	ARG	ALA	engineered mutation	UNP P15056
A	706	SER	LEU	engineered mutation	UNP P15056
A	709	ARG	GLN	engineered mutation	UNP P15056
A	713	GLU	SER	engineered mutation	UNP P15056
A	716	GLU	LEU	engineered mutation	UNP P15056
A	720	GLU	SER	engineered mutation	UNP P15056
A	722	SER	PRO	engineered mutation	UNP P15056
A	723	GLY	LYS	engineered mutation	UNP P15056
B	427	MET	-	initiating methionine	UNP P15056
B	428	GLY	-	expression tag	UNP P15056
B	429	SER	-	expression tag	UNP P15056
B	430	SER	-	expression tag	UNP P15056
B	431	HIS	-	expression tag	UNP P15056
B	432	HIS	-	expression tag	UNP P15056
B	433	HIS	-	expression tag	UNP P15056
B	434	HIS	-	expression tag	UNP P15056
B	435	HIS	-	expression tag	UNP P15056
B	436	HIS	-	expression tag	UNP P15056
B	437	SER	-	expression tag	UNP P15056
B	438	SER	-	expression tag	UNP P15056
B	439	GLY	-	expression tag	UNP P15056
B	440	LEU	-	expression tag	UNP P15056
B	441	VAL	-	expression tag	UNP P15056
B	442	PRO	-	expression tag	UNP P15056
B	443	ARG	-	expression tag	UNP P15056
B	444	GLY	-	expression tag	UNP P15056
B	445	SER	-	expression tag	UNP P15056
B	446	HIS	-	expression tag	UNP P15056
B	447	MET	-	expression tag	UNP P15056
B	543	ALA	ILE	engineered mutation	UNP P15056
B	544	SER	ILE	engineered mutation	UNP P15056
B	551	LYS	ILE	engineered mutation	UNP P15056
B	562	ARG	GLN	engineered mutation	UNP P15056
B	588	ASN	LEU	engineered mutation	UNP P15056
B	630	SER	LYS	engineered mutation	UNP P15056
B	667	GLU	PHE	engineered mutation	UNP P15056
B	673	SER	TYR	engineered mutation	UNP P15056
B	688	ARG	ALA	engineered mutation	UNP P15056

*Continued on next page...*





## 4 Data and refinement statistics

Property	Value	Source
Space group	P 21 21 21	Depositor
Cell constants a, b, c, $\alpha$ , $\beta$ , $\gamma$	52.10Å 103.82Å 110.57Å 90.00° 90.00° 90.00°	Depositor
Resolution (Å)	34.73 – 1.95 48.80 – 1.95	Depositor EDS
% Data completeness (in resolution range)	99.6 (34.73-1.95) 99.6 (48.80-1.95)	Depositor EDS
$R_{merge}$	(Not available)	Depositor
$R_{sym}$	(Not available)	Depositor
$\langle I/\sigma(I) \rangle$ <sup>1</sup>	3.78 (at 1.95Å)	Xtrriage
Refinement program	PHENIX (1.10_2155)	Depositor
R, $R_{free}$	0.195 , 0.244 0.195 , 0.242	Depositor DCC
$R_{free}$ test set	2302 reflections (5.18%)	wwPDB-VP
Wilson B-factor (Å <sup>2</sup> )	30.1	Xtrriage
Anisotropy	0.780	Xtrriage
Bulk solvent $k_{sol}$ (e/Å <sup>3</sup> ), $B_{sol}$ (Å <sup>2</sup> )	0.37 , 51.7	EDS
L-test for twinning <sup>2</sup>	$\langle  L  \rangle = 0.50$ , $\langle L^2 \rangle = 0.34$	Xtrriage
Estimated twinning fraction	No twinning to report.	Xtrriage
$F_o, F_c$ correlation	0.96	EDS
Total number of atoms	4177	wwPDB-VP
Average B, all atoms (Å <sup>2</sup> )	46.0	wwPDB-VP

Xtrriage's analysis on translational NCS is as follows: *The largest off-origin peak in the Patterson function is 4.01% of the height of the origin peak. No significant pseudotranslation is detected.*

<sup>1</sup>Intensities estimated from amplitudes.

<sup>2</sup>Theoretical values of  $\langle |L| \rangle$ ,  $\langle L^2 \rangle$  for acentric reflections are 0.5, 0.333 respectively for untwinned datasets, and 0.375, 0.2 for perfectly twinned datasets.

## 5 Model quality [i](#)

### 5.1 Standard geometry [i](#)

Bond lengths and bond angles in the following residue types are not validated in this section: 6DC

The Z score for a bond length (or angle) is the number of standard deviations the observed value is removed from the expected value. A bond length (or angle) with  $|Z| > 5$  is considered an outlier worth inspection. RMSZ is the root-mean-square of all Z scores of the bond lengths (or angles).

Mol	Chain	Bond lengths		Bond angles	
		RMSZ	# $ Z  > 5$	RMSZ	# $ Z  > 5$
1	A	0.44	0/2044	0.60	1/2753 (0.0%)
1	B	0.56	4/2058 (0.2%)	0.57	2/2771 (0.1%)
All	All	0.50	4/4102 (0.1%)	0.59	3/5524 (0.1%)

All (4) bond length outliers are listed below:

Mol	Chain	Res	Type	Atoms	Z	Observed(Å)	Ideal(Å)
1	B	703	GLU	CD-OE1	-12.55	1.11	1.25
1	B	703	GLU	CB-CG	-10.19	1.32	1.52
1	B	700	LYS	CB-CG	6.44	1.70	1.52
1	B	700	LYS	CD-CE	5.05	1.63	1.51

All (3) bond angle outliers are listed below:

Mol	Chain	Res	Type	Atoms	Z	Observed(°)	Ideal(°)
1	B	717	LEU	CA-CB-CG	6.20	129.57	115.30
1	B	700	LYS	CA-CB-CG	5.44	125.36	113.40
1	A	574	HIS	C-N-CA	5.05	134.33	121.70

There are no chirality outliers.

There are no planarity outliers.

### 5.2 Too-close contacts [i](#)

In the following table, the Non-H and H(model) columns list the number of non-hydrogen atoms and hydrogen atoms in the chain respectively. The H(added) column lists the number of hydrogen atoms added and optimized by MolProbity. The Clashes column lists the number of clashes within the asymmetric unit, whereas Symm-Clashes lists symmetry-related clashes.



Mol	Chain	Non-H	H(model)	H(added)	Clashes	Symm-Clashes
1	A	2003	0	2022	20	0
1	B	2019	0	2030	25	0
2	A	28	0	0	0	0
2	B	28	0	0	0	0
3	A	63	0	0	0	0
3	B	36	0	0	0	0
All	All	4177	0	4052	44	0

The all-atom clashscore is defined as the number of clashes found per 1000 atoms (including hydrogen atoms). The all-atom clashscore for this structure is 5.

All (44) close contacts within the same asymmetric unit are listed below, sorted by their clash magnitude.

Atom-1	Atom-2	Interatomic distance (Å)	Clash overlap (Å)
1:B:700:LYS:NZ	1:B:703:GLU:OE1	1.84	1.10
1:A:550:MET:O	1:A:554:ILE:HD12	1.74	0.87
1:B:491:THR:H	1:B:494:GLN:NE2	1.80	0.79
1:A:501:GLU:OE1	1:A:597:LEU:HD22	1.81	0.79
1:A:712:ALA:O	1:A:716:GLU:HG3	1.87	0.75
1:B:719:ARG:HG2	1:B:720:GLU:OE2	1.89	0.71
1:A:501:GLU:OE1	1:A:597:LEU:N	2.33	0.61
1:B:625:ILE:C	1:B:627:MET:H	2.04	0.60
1:A:688:ARG:HB2	1:A:717:LEU:HD13	1.84	0.59
1:A:562:ARG:HG3	1:A:711:LEU:HD11	1.86	0.58
1:B:681:VAL:HG21	1:B:690:LYS:HD2	1.86	0.58
1:B:487:VAL:HG11	1:B:494:GLN:OE1	2.05	0.56
1:B:689:MET:HB2	1:B:717:LEU:HD11	1.89	0.54
1:B:545:GLU:H	1:B:545:GLU:CD	2.12	0.53
1:B:614:SER:O	1:B:662:ARG:NH1	2.34	0.53
1:B:491:THR:H	1:B:494:GLN:HE21	1.54	0.52
1:B:465:SER:HA	1:B:470:THR:HA	1.90	0.52
1:B:496:GLN:NE2	1:B:496:GLN:HA	2.27	0.49
1:A:620:MET:HE1	1:A:625:ILE:HA	1.94	0.49
1:B:688:ARG:HD3	1:B:691:ARG:HH21	1.79	0.48
1:B:573:ILE:HG22	1:B:575:ARG:HG3	1.95	0.48
1:B:625:ILE:C	1:B:627:MET:N	2.68	0.46
1:B:496:GLN:HA	1:B:496:GLN:HE21	1.80	0.46
1:A:516:PHE:O	1:B:509:ARG:HD3	2.16	0.46
1:A:512:ASN:HA	1:A:590:VAL:O	2.17	0.45
1:B:548:PHE:CD1	1:B:552:LYS:HG2	2.52	0.45
1:B:678:LEU:O	1:B:690:LYS:HE3	2.17	0.44
1:A:620:MET:HE3	1:A:624:VAL:HG12	2.00	0.44

*Continued on next page...*

Continued from previous page...

Atom-1	Atom-2	Interatomic distance (Å)	Clash overlap (Å)
1:B:491:THR:HG23	1:B:494:GLN:NE2	2.33	0.44
1:B:552:LYS:NZ	1:B:588:ASN:OD1	2.51	0.43
1:A:472:TYR:CE1	1:A:484:MET:HG3	2.53	0.43
1:B:623:GLU:HA	1:B:626:ARG:NH1	2.34	0.43
1:A:487:VAL:HG21	1:A:525:LEU:HD12	2.00	0.43
1:A:705:PRO:HB3	1:A:709:ARG:CZ	2.49	0.42
1:A:688:ARG:HB3	1:A:688:ARG:NH1	2.34	0.42
1:B:688:ARG:HH22	1:B:716:GLU:HG2	1.84	0.42
1:A:484:MET:CE	1:A:526:ALA:HB2	2.50	0.41
1:A:484:MET:HE3	1:A:484:MET:HA	2.03	0.41
1:A:575:ARG:HH21	1:A:633:TYR:CB	2.33	0.41
1:A:484:MET:HE1	1:A:526:ALA:HB2	2.02	0.41
1:B:512:ASN:HA	1:B:590:VAL:O	2.21	0.41
1:A:575:ARG:HH21	1:A:633:TYR:HB2	1.85	0.41
1:A:616:SER:HB3	1:A:617:ILE:H	1.80	0.40
1:B:622:PRO:HA	1:B:625:ILE:HG22	2.02	0.40

There are no symmetry-related clashes.

## 5.3 Torsion angles [i](#)

### 5.3.1 Protein backbone [i](#)

In the following table, the Percentiles column shows the percent Ramachandran outliers of the chain as a percentile score with respect to all X-ray entries followed by that with respect to entries of similar resolution.

The Analysed column shows the number of residues for which the backbone conformation was analysed, and the total number of residues.

Mol	Chain	Analysed	Favoured	Allowed	Outliers	Percentiles	
1	A	244/297 (82%)	234 (96%)	10 (4%)	0	100	100
1	B	244/297 (82%)	239 (98%)	5 (2%)	0	100	100
All	All	488/594 (82%)	473 (97%)	15 (3%)	0	100	100

There are no Ramachandran outliers to report.

### 5.3.2 Protein sidechains [i](#)

In the following table, the Percentiles column shows the percent sidechain outliers of the chain as a percentile score with respect to all X-ray entries followed by that with respect to entries of similar resolution.

The Analysed column shows the number of residues for which the sidechain conformation was analysed, and the total number of residues.

Mol	Chain	Analysed	Rotameric	Outliers	Percentiles	
1	A	220/260 (85%)	218 (99%)	2 (1%)	78	77
1	B	222/260 (85%)	219 (99%)	3 (1%)	67	62
All	All	442/520 (85%)	437 (99%)	5 (1%)	73	71

All (5) residues with a non-rotameric sidechain are listed below:

Mol	Chain	Res	Type
1	A	484	MET
1	A	488	THR
1	B	636	GLN
1	B	717	LEU
1	B	719	ARG

Sometimes sidechains can be flipped to improve hydrogen bonding and reduce clashes. All (4) such sidechains are listed below:

Mol	Chain	Res	Type
1	A	486	ASN
1	B	494	GLN
1	B	496	GLN
1	B	628	GLN

### 5.3.3 RNA [i](#)

There are no RNA molecules in this entry.

## 5.4 Non-standard residues in protein, DNA, RNA chains [i](#)

There are no non-standard protein/DNA/RNA residues in this entry.

## 5.5 Carbohydrates [i](#)

There are no monosaccharides in this entry.

## 5.6 Ligand geometry [i](#)

2 ligands are modelled in this entry.

In the following table, the Counts columns list the number of bonds (or angles) for which Mogul statistics could be retrieved, the number of bonds (or angles) that are observed in the model and the number of bonds (or angles) that are defined in the Chemical Component Dictionary. The Link column lists molecule types, if any, to which the group is linked. The Z score for a bond length (or angle) is the number of standard deviations the observed value is removed from the expected value. A bond length (or angle) with  $|Z| > 2$  is considered an outlier worth inspection. RMSZ is the root-mean-square of all Z scores of the bond lengths (or angles).

Mol	Type	Chain	Res	Link	Bond lengths			Bond angles		
					Counts	RMSZ	# Z  > 2	Counts	RMSZ	# Z  > 2
2	6DC	A	801	-	29,30,30	2.81	9 (31%)	39,43,43	2.22	8 (20%)
2	6DC	B	801	-	29,30,30	3.02	10 (34%)	39,43,43	2.26	5 (12%)

In the following table, the Chirals column lists the number of chiral outliers, the number of chiral centers analysed, the number of these observed in the model and the number defined in the Chemical Component Dictionary. Similar counts are reported in the Torsion and Rings columns. '-' means no outliers of that kind were identified.

Mol	Type	Chain	Res	Link	Chirals	Torsions	Rings
2	6DC	A	801	-	-	0/15/15/15	0/3/3/3
2	6DC	B	801	-	-	1/15/15/15	0/3/3/3

All (19) bond length outliers are listed below:

Mol	Chain	Res	Type	Atoms	Z	Observed(Å)	Ideal(Å)
2	B	801	6DC	CAM-NAQ	9.49	1.40	1.29
2	A	801	6DC	CAM-NAQ	9.21	1.40	1.29
2	B	801	6DC	OAE-SBB	6.52	1.52	1.43
2	A	801	6DC	OAF-SBB	6.36	1.52	1.43
2	B	801	6DC	OAF-SBB	6.21	1.52	1.43
2	A	801	6DC	OAE-SBB	5.16	1.50	1.43
2	B	801	6DC	CAW-NAS	-4.69	1.35	1.42
2	A	801	6DC	CAW-NAS	-4.49	1.35	1.42
2	B	801	6DC	CAZ-CAX	-3.63	1.40	1.47
2	A	801	6DC	CAZ-CAX	-3.53	1.40	1.47
2	B	801	6DC	CAW-CAU	-3.49	1.39	1.41

*Continued on next page...*

Continued from previous page...

Mol	Chain	Res	Type	Atoms	Z	Observed(Å)	Ideal(Å)
2	B	801	6DC	CAY-NAQ	-3.22	1.34	1.40
2	B	801	6DC	CAV-CAU	-3.16	1.39	1.41
2	A	801	6DC	CAY-NAQ	-3.12	1.34	1.40
2	B	801	6DC	CAM-NBA	2.83	1.41	1.35
2	A	801	6DC	CAM-NBA	2.65	1.40	1.35
2	B	801	6DC	CAT-NAR	-2.63	1.34	1.40
2	A	801	6DC	CAW-CAU	-2.52	1.39	1.41
2	A	801	6DC	CAT-NAR	-2.41	1.35	1.40

All (13) bond angle outliers are listed below:

Mol	Chain	Res	Type	Atoms	Z	Observed(°)	Ideal(°)
2	B	801	6DC	CAU-CAW-NAS	-8.58	114.22	120.59
2	A	801	6DC	CAU-CAW-NAS	-7.27	115.19	120.59
2	A	801	6DC	OAF-SBB-OAE	-6.37	110.12	119.35
2	B	801	6DC	OAF-SBB-OAE	-5.87	110.84	119.35
2	A	801	6DC	NBA-CAM-NAQ	-5.84	119.21	126.02
2	B	801	6DC	NBA-CAM-NAQ	-5.73	119.34	126.02
2	B	801	6DC	CAY-NAQ-CAM	4.05	120.61	116.62
2	A	801	6DC	CAY-NAQ-CAM	3.87	120.44	116.62
2	B	801	6DC	CAJ-CAW-NAS	2.42	125.72	120.88
2	A	801	6DC	CAP-SBB-NAS	2.32	110.08	106.77
2	A	801	6DC	CAJ-CAW-NAS	2.24	125.37	120.88
2	A	801	6DC	OAE-SBB-NAS	2.15	112.51	107.28
2	A	801	6DC	OAE-SBB-CAP	-2.09	104.53	107.86

There are no chirality outliers.

All (1) torsion outliers are listed below:

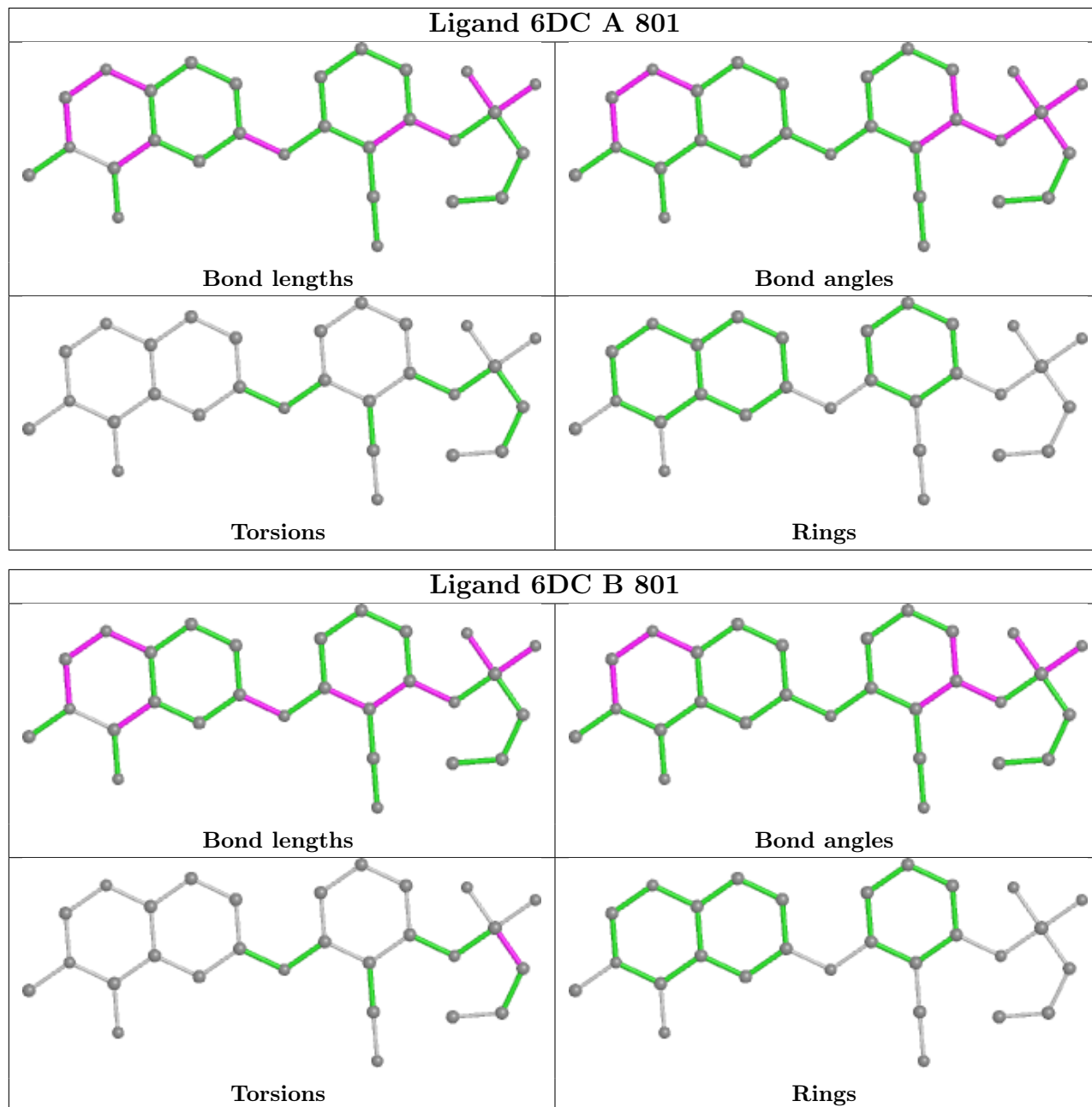
Mol	Chain	Res	Type	Atoms
2	B	801	6DC	CAO-CAP-SBB-OAE

There are no ring outliers.

No monomer is involved in short contacts.

The following is a two-dimensional graphical depiction of Mogul quality analysis of bond lengths, bond angles, torsion angles, and ring geometry for all instances of the Ligand of Interest. In addition, ligands with molecular weight > 250 and outliers as shown on the validation Tables will also be included. For torsion angles, if less than 5% of the Mogul distribution of torsion angles is within 10 degrees of the torsion angle in question, then that torsion angle is considered an outlier. Any bond that is central to one or more torsion angles identified as an outlier by Mogul will be highlighted in the graph. For rings, the root-mean-square deviation (RMSD) between the ring

in question and similar rings identified by Mogul is calculated over all ring torsion angles. If the average RMSD is greater than 60 degrees and the minimal RMSD between the ring in question and any Mogul-identified rings is also greater than 60 degrees, then that ring is considered an outlier. The outliers are highlighted in purple. The color gray indicates Mogul did not find sufficient equivalents in the CSD to analyse the geometry.



## 5.7 Other polymers [\(i\)](#)

There are no such residues in this entry.

## 5.8 Polymer linkage issues

There are no chain breaks in this entry.

## 6 Fit of model and data

### 6.1 Protein, DNA and RNA chains

In the following table, the column labelled ‘#RSRZ > 2’ contains the number (and percentage) of RSRZ outliers, followed by percent RSRZ outliers for the chain as percentile scores relative to all X-ray entries and entries of similar resolution. The OWAB column contains the minimum, median, 95<sup>th</sup> percentile and maximum values of the occupancy-weighted average B-factor per residue. The column labelled ‘Q < 0.9’ lists the number of (and percentage) of residues with an average occupancy less than 0.9.

Mol	Chain	Analysed	<RSRZ>	#RSRZ>2	OWAB(Å <sup>2</sup> )	Q<0.9
1	A	250/297 (84%)	0.36	16 (6%) 19 28	21, 39, 83, 108	0
1	B	252/297 (84%)	0.38	11 (4%) 34 44	21, 44, 88, 107	0
All	All	502/594 (84%)	0.37	27 (5%) 25 34	21, 41, 86, 108	0

All (27) RSRZ outliers are listed below:

Mol	Chain	Res	Type	RSRZ
1	A	468	PHE	9.4
1	A	493	GLN	4.5
1	A	597	LEU	3.7
1	A	547	LYS	3.7
1	B	721	LEU	3.6
1	A	685	CYS	3.5
1	B	448	ASP	3.3
1	A	545	GLU	3.3
1	A	546	THR	3.0
1	A	715	GLU	2.9
1	B	465	SER	2.8
1	B	454	ASP	2.8
1	B	491	THR	2.8
1	B	545	GLU	2.7
1	A	488	THR	2.6
1	A	714	ILE	2.6
1	A	717	LEU	2.5
1	B	493	GLN	2.5
1	A	716	GLU	2.4
1	A	486	ASN	2.4
1	B	658	ASN	2.4
1	A	466	GLY	2.3
1	B	495	LEU	2.2
1	B	627	MET	2.2

*Continued on next page...*



*Continued from previous page...*

Mol	Chain	Res	Type	RSRZ
1	B	546	THR	2.1
1	A	718	ALA	2.0
1	A	687	LYS	2.0

## 6.2 Non-standard residues in protein, DNA, RNA chains [i](#)

There are no non-standard protein/DNA/RNA residues in this entry.

## 6.3 Carbohydrates [i](#)

There are no monosaccharides in this entry.

## 6.4 Ligands [i](#)

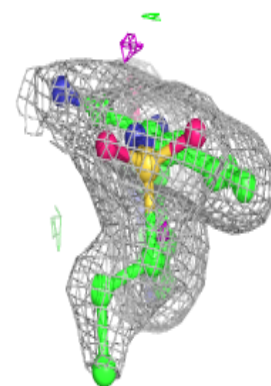
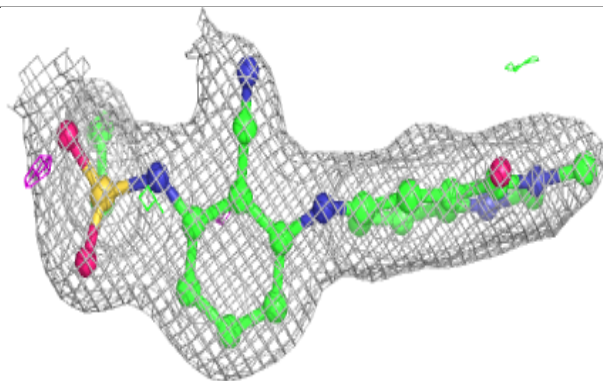
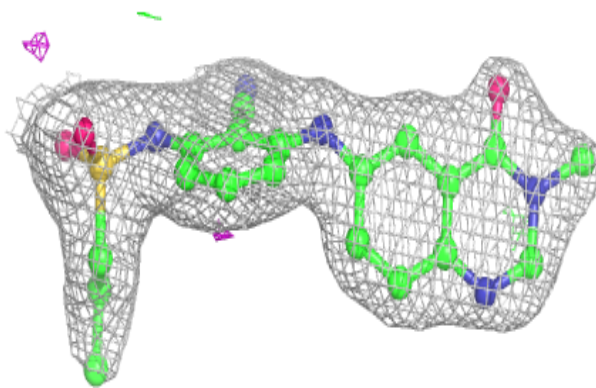
In the following table, the Atoms column lists the number of modelled atoms in the group and the number defined in the chemical component dictionary. The B-factors column lists the minimum, median, 95<sup>th</sup> percentile and maximum values of B factors of atoms in the group. The column labelled 'Q< 0.9' lists the number of atoms with occupancy less than 0.9.

Mol	Type	Chain	Res	Atoms	RSCC	RSR	B-factors(Å <sup>2</sup> )	Q<0.9
2	6DC	B	801	28/28	0.97	0.12	32,40,49,53	0
2	6DC	A	801	28/28	0.98	0.11	19,24,28,30	0

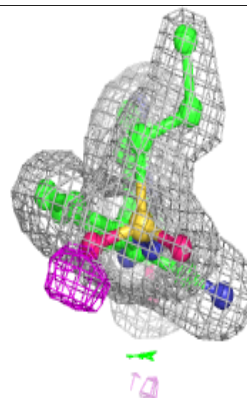
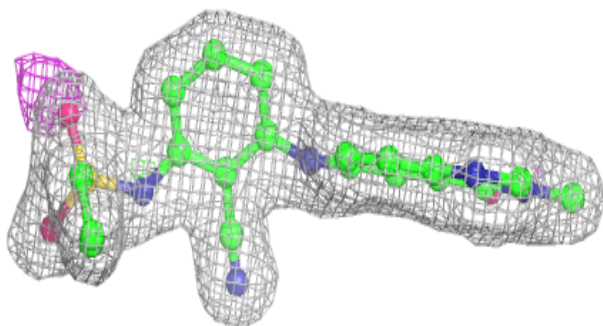
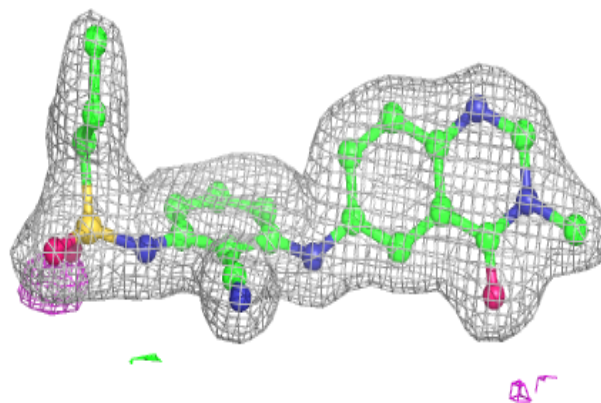
The following is a graphical depiction of the model fit to experimental electron density of all instances of the Ligand of Interest. In addition, ligands with molecular weight > 250 and outliers as shown on the geometry validation Tables will also be included. Each fit is shown from different orientation to approximate a three-dimensional view.

**Electron density around 6DC B 801:**

$2mF_o-DF_c$  (at 0.7 rmsd) in gray  
 $mF_o-DF_c$  (at 3 rmsd) in purple (negative)  
and green (positive)

**Electron density around 6DC A 801:**

$2mF_o-DF_c$  (at 0.7 rmsd) in gray  
 $mF_o-DF_c$  (at 3 rmsd) in purple (negative)  
and green (positive)



## 6.5 Other polymers [i](#)

There are no such residues in this entry.