



# Full wwPDB X-ray Structure Validation Report ⓘ

Feb 10, 2024 – 03:52 PM EST

PDB ID : 2ISK  
Title : BluB bound to flavin anion (charge transfer complex)  
Authors : Larsen, N.A.; Taga, M.E.; Howard-Jones, A.R.; Walsh, C.T.; Walker, G.C.  
Deposited on : 2006-10-17  
Resolution : 2.10 Å(reported)

This is a Full wwPDB X-ray Structure Validation Report for a publicly released PDB entry.

We welcome your comments at [validation@mail.wwpdb.org](mailto:validation@mail.wwpdb.org)

A user guide is available at

<https://www.wwpdb.org/validation/2017/XrayValidationReportHelp>

with specific help available everywhere you see the ⓘ symbol.

The types of validation reports are described at

<http://www.wwpdb.org/validation/2017/FAQs#types>.

---

The following versions of software and data (see [references ⓘ](#)) were used in the production of this report:

MolProbity : 4.02b-467  
Mogul : 1.8.5 (274361), CSD as541be (2020)  
Xtriage (Phenix) : 1.13  
EDS : 2.36  
buster-report : 1.1.7 (2018)  
Percentile statistics : 20191225.v01 (using entries in the PDB archive December 25th 2019)  
Refmac : 5.8.0158  
CCP4 : 7.0.044 (Gargrove)  
Ideal geometry (proteins) : Engh & Huber (2001)  
Ideal geometry (DNA, RNA) : Parkinson et al. (1996)  
Validation Pipeline (wwPDB-VP) : 2.36

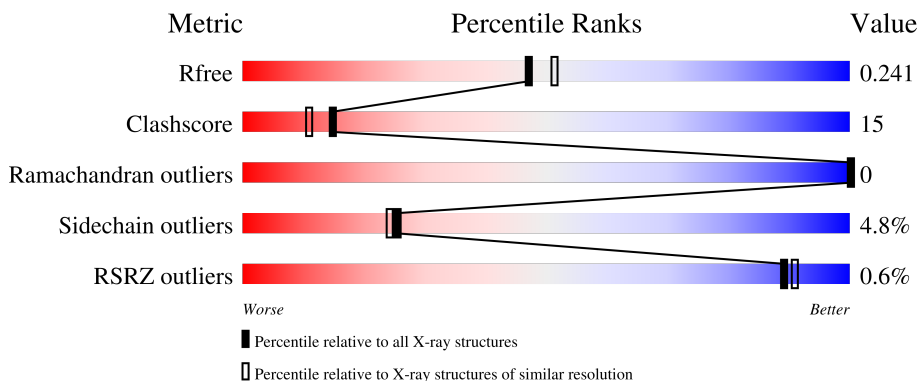
# 1 Overall quality at a glance

The following experimental techniques were used to determine the structure:

*X-RAY DIFFRACTION*

The reported resolution of this entry is 2.10 Å.

Percentile scores (ranging between 0-100) for global validation metrics of the entry are shown in the following graphic. The table shows the number of entries on which the scores are based.



Metric	Whole archive (#Entries)	Similar resolution (#Entries, resolution range(Å))
$R_{free}$	130704	5197 (2.10-2.10)
Clashscore	141614	5710 (2.10-2.10)
Ramachandran outliers	138981	5647 (2.10-2.10)
Sidechain outliers	138945	5648 (2.10-2.10)
RSRZ outliers	127900	5083 (2.10-2.10)

The table below summarises the geometric issues observed across the polymeric chains and their fit to the electron density. The red, orange, yellow and green segments of the lower bar indicate the fraction of residues that contain outliers for  $\geq 3$ , 2, 1 and 0 types of geometric quality criteria respectively. A grey segment represents the fraction of residues that are not modelled. The numeric value for each fraction is indicated below the corresponding segment, with a dot representing fractions  $\leq 5\%$ . The upper red bar (where present) indicates the fraction of residues that have poor fit to the electron density. The numeric value is given above the bar.

Mol	Chain	Length	Quality of chain
1	A	230	
1	B	230	
1	C	230	
1	D	230	
1	E	230	

*Continued on next page...*

*Continued from previous page...*

Mol	Chain	Length	Quality of chain
1	F	230	<p>% 77% 17% • 5%</p>
1	G	230	<p>% 73% 19% • 5%</p>
1	H	230	<p>% 74% 19% • 5%</p>

## 2 Entry composition [i](#)

There are 3 unique types of molecules in this entry. The entry contains 15127 atoms, of which 0 are hydrogens and 0 are deuteriums.

In the tables below, the ZeroOcc column contains the number of atoms modelled with zero occupancy, the AltConf column contains the number of residues with at least one atom in alternate conformation and the Trace column contains the number of residues modelled with at most 2 atoms.

- Molecule 1 is a protein called BluB.

Mol	Chain	Residues	Atoms					ZeroOcc	AltConf	Trace
			Total	C	N	O	S			
1	A	219	1741	1103	314	317	7	0	0	0
1	B	219	1741	1103	314	317	7	0	0	0
1	C	219	1741	1103	314	317	7	0	0	0
1	D	219	1741	1103	314	317	7	0	0	0
1	E	219	1741	1103	314	317	7	0	0	0
1	F	219	1741	1103	314	317	7	0	0	0
1	G	219	1741	1103	314	317	7	0	0	0
1	H	219	1741	1103	314	317	7	0	0	0

There are 24 discrepancies between the modelled and reference sequences:

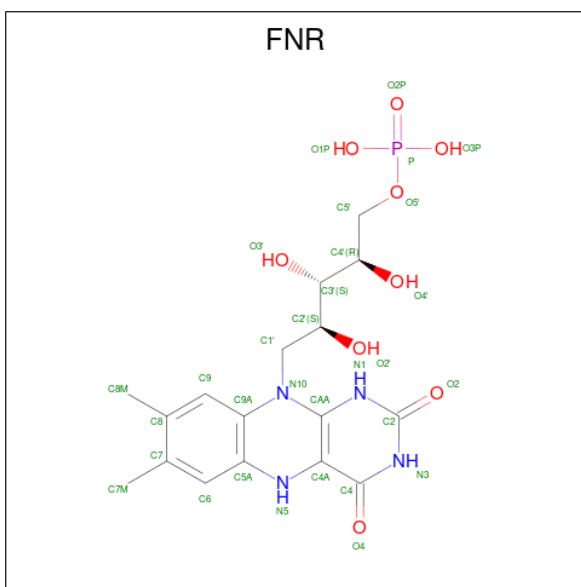
Chain	Residue	Modelled	Actual	Comment	Reference
A	-2	GLY	-	cloning artifact	UNP Q92PC8
A	-1	SER	-	cloning artifact	UNP Q92PC8
A	0	HIS	-	cloning artifact	UNP Q92PC8
B	-2	GLY	-	cloning artifact	UNP Q92PC8
B	-1	SER	-	cloning artifact	UNP Q92PC8
B	0	HIS	-	cloning artifact	UNP Q92PC8
C	-2	GLY	-	cloning artifact	UNP Q92PC8
C	-1	SER	-	cloning artifact	UNP Q92PC8
C	0	HIS	-	cloning artifact	UNP Q92PC8
D	-2	GLY	-	cloning artifact	UNP Q92PC8
D	-1	SER	-	cloning artifact	UNP Q92PC8
D	0	HIS	-	cloning artifact	UNP Q92PC8
E	-2	GLY	-	cloning artifact	UNP Q92PC8

*Continued on next page...*

Continued from previous page...

Chain	Residue	Modelled	Actual	Comment	Reference
E	-1	SER	-	cloning artifact	UNP Q92PC8
E	0	HIS	-	cloning artifact	UNP Q92PC8
F	-2	GLY	-	cloning artifact	UNP Q92PC8
F	-1	SER	-	cloning artifact	UNP Q92PC8
F	0	HIS	-	cloning artifact	UNP Q92PC8
G	-2	GLY	-	cloning artifact	UNP Q92PC8
G	-1	SER	-	cloning artifact	UNP Q92PC8
G	0	HIS	-	cloning artifact	UNP Q92PC8
H	-2	GLY	-	cloning artifact	UNP Q92PC8
H	-1	SER	-	cloning artifact	UNP Q92PC8
H	0	HIS	-	cloning artifact	UNP Q92PC8

- Molecule 2 is 1-DEOXY-1-(7,8-DIMETHYL-2,4-DIOXO-3,4-DIHYDRO-2H-BENZO[G]P  
TERIDIN-1-ID-10(5H)-YL)-5-O-PHOSPHONATO-D-RIBITOL (three-letter code: FNR)  
(formula: C<sub>17</sub>H<sub>23</sub>N<sub>4</sub>O<sub>9</sub>P).



Mol	Chain	Residues	Atoms					ZeroOcc	AltConf
2	A	1	Total	C	N	O	P	0	0
			31	17	4	9	1		
2	B	1	Total	C	N	O	P	0	0
			31	17	4	9	1		
2	C	1	Total	C	N	O	P	0	0
			31	17	4	9	1		
2	D	1	Total	C	N	O	P	0	0
			31	17	4	9	1		
2	E	1	Total	C	N	O	P	0	0
			31	17	4	9	1		

Continued on next page...

*Continued from previous page...*

Mol	Chain	Residues	Atoms					ZeroOcc	AltConf
2	F	1	Total	C	N	O	P	0	0
			31	17	4	9	1		
2	G	1	Total	C	N	O	P	0	0
			31	17	4	9	1		
2	H	1	Total	C	N	O	P	0	0
			31	17	4	9	1		

- Molecule 3 is water.

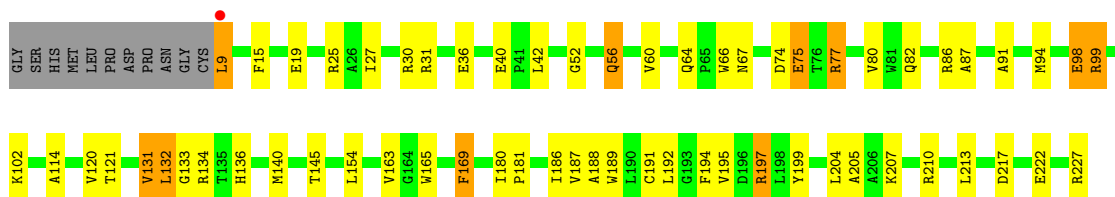
Mol	Chain	Residues	Atoms		ZeroOcc	AltConf
3	A	131	Total	O	0	0
			131	131		
3	B	105	Total	O	0	0
			105	105		
3	C	126	Total	O	0	0
			126	126		
3	D	99	Total	O	0	0
			99	99		
3	E	131	Total	O	0	0
			131	131		
3	F	125	Total	O	0	0
			125	125		
3	G	107	Total	O	0	0
			107	107		
3	H	127	Total	O	0	0
			127	127		

### 3 Residue-property plots [i](#)

These plots are drawn for all protein, RNA, DNA and oligosaccharide chains in the entry. The first graphic for a chain summarises the proportions of the various outlier classes displayed in the second graphic. The second graphic shows the sequence view annotated by issues in geometry and electron density. Residues are color-coded according to the number of geometric quality criteria for which they contain at least one outlier: green = 0, yellow = 1, orange = 2 and red = 3 or more. A red dot above a residue indicates a poor fit to the electron density ( $RSRZ > 2$ ). Stretches of 2 or more consecutive residues without any outlier are shown as a green connector. Residues present in the sample, but not in the model, are shown in grey.

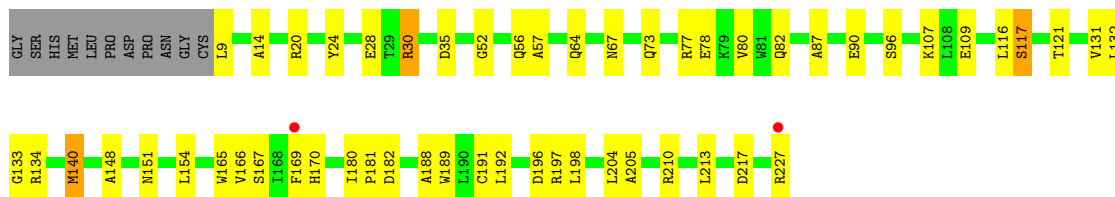
- Molecule 1: BluB

Chain A: 



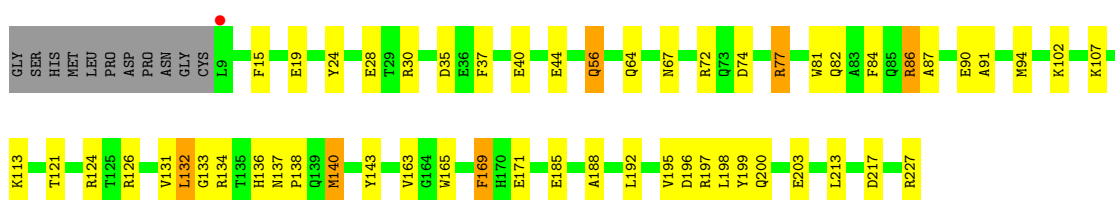
- Molecule 1: BluB

Chain B: 



- Molecule 1: BluB

Chain C: 



- Molecule 1: BluB

Chain D: 

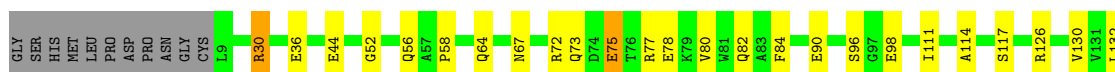
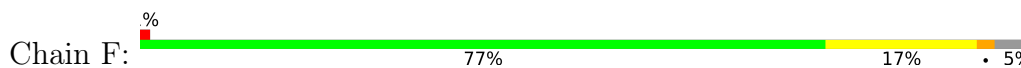




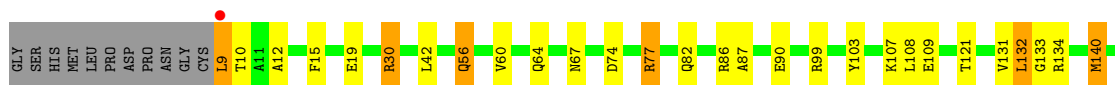
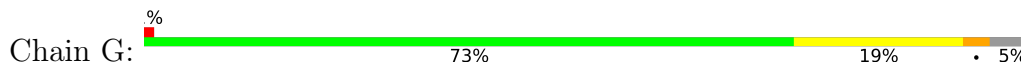
• Molecule 1: BluB



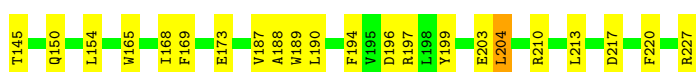
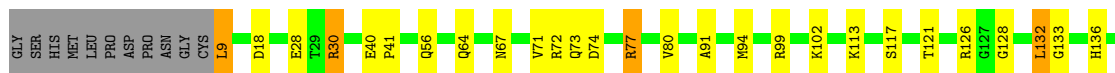
• Molecule 1: BluB



• Molecule 1: BluB



• Molecule 1: BluB





## 4 Data and refinement statistics

Property	Value	Source
Space group	P 1 21 1	Depositor
Cell constants a, b, c, $\alpha$ , $\beta$ , $\gamma$	63.45Å 169.87Å 90.95Å 90.00° 89.99° 90.00°	Depositor
Resolution (Å)	20.00 – 2.10 49.75 – 2.10	Depositor EDS
% Data completeness (in resolution range)	80.2 (20.00-2.10) 79.9 (49.75-2.10)	Depositor EDS
$R_{merge}$	0.08	Depositor
$R_{sym}$	(Not available)	Depositor
$\langle I/\sigma(I) \rangle$ <sup>1</sup>	2.77 (at 2.10Å)	Xtrriage
Refinement program	CNS 1.1	Depositor
R, $R_{free}$	0.203 , 0.250 0.196 , 0.241	Depositor DCC
$R_{free}$ test set	4513 reflections (5.03%)	wwPDB-VP
Wilson B-factor (Å <sup>2</sup> )	16.6	Xtrriage
Anisotropy	0.794	Xtrriage
Bulk solvent $k_{sol}$ (e/Å <sup>3</sup> ), $B_{sol}$ (Å <sup>2</sup> )	0.37 , 24.1	EDS
L-test for twinning <sup>2</sup>	$\langle  L  \rangle = 0.51$ , $\langle L^2 \rangle = 0.34$	Xtrriage
Estimated twinning fraction	0.468 for h,-k,-l	Xtrriage
$F_o, F_c$ correlation	0.94	EDS
Total number of atoms	15127	wwPDB-VP
Average B, all atoms (Å <sup>2</sup> )	20.0	wwPDB-VP

Xtrriage's analysis on translational NCS is as follows: *The largest off-origin peak in the Patterson function is 4.75% of the height of the origin peak. No significant pseudotranslation is detected.*

<sup>1</sup>Intensities estimated from amplitudes.

<sup>2</sup>Theoretical values of  $\langle |L| \rangle$ ,  $\langle L^2 \rangle$  for acentric reflections are 0.5, 0.333 respectively for untwinned datasets, and 0.375, 0.2 for perfectly twinned datasets.

## 5 Model quality [i](#)

### 5.1 Standard geometry [i](#)

Bond lengths and bond angles in the following residue types are not validated in this section: FNR

The Z score for a bond length (or angle) is the number of standard deviations the observed value is removed from the expected value. A bond length (or angle) with  $|Z| > 5$  is considered an outlier worth inspection. RMSZ is the root-mean-square of all Z scores of the bond lengths (or angles).

Mol	Chain	Bond lengths		Bond angles	
		RMSZ	# Z  >5	RMSZ	# Z  >5
1	A	0.34	0/1780	0.62	0/2412
1	B	0.34	0/1780	0.60	0/2412
1	C	0.33	0/1780	0.59	0/2412
1	D	0.33	0/1780	0.60	0/2412
1	E	0.34	0/1780	0.62	0/2412
1	F	0.34	0/1780	0.60	0/2412
1	G	0.31	0/1780	0.57	0/2412
1	H	0.31	0/1780	0.60	0/2412
All	All	0.33	0/14240	0.60	0/19296

There are no bond length outliers.

There are no bond angle outliers.

There are no chirality outliers.

There are no planarity outliers.

### 5.2 Too-close contacts [i](#)

In the following table, the Non-H and H(model) columns list the number of non-hydrogen atoms and hydrogen atoms in the chain respectively. The H(added) column lists the number of hydrogen atoms added and optimized by MolProbity. The Clashes column lists the number of clashes within the asymmetric unit, whereas Symm-Clashes lists symmetry-related clashes.

Mol	Chain	Non-H	H(model)	H(added)	Clashes	Symm-Clashes
1	A	1741	0	1716	77	0
1	B	1741	0	1716	62	0
1	C	1741	0	1716	58	0
1	D	1741	0	1716	64	0
1	E	1741	0	1716	63	0

*Continued on next page...*

Continued from previous page...

Mol	Chain	Non-H	H(model)	H(added)	Clashes	Symm-Clashes
1	F	1741	0	1716	47	0
1	G	1741	0	1716	66	0
1	H	1741	0	1716	51	0
2	A	31	0	22	5	0
2	B	31	0	22	5	0
2	C	31	0	22	3	0
2	D	31	0	22	3	0
2	E	31	0	22	5	0
2	F	31	0	22	4	0
2	G	31	0	22	2	0
2	H	31	0	22	4	0
3	A	131	0	0	8	0
3	B	105	0	0	10	0
3	C	126	0	0	5	0
3	D	99	0	0	3	0
3	E	131	0	0	5	0
3	F	125	0	0	4	0
3	G	107	0	0	8	0
3	H	127	0	0	7	0
All	All	15127	0	13904	426	0

The all-atom clashscore is defined as the number of clashes found per 1000 atoms (including hydrogen atoms). The all-atom clashscore for this structure is 15.

All (426) close contacts within the same asymmetric unit are listed below, sorted by their clash magnitude.

Atom-1	Atom-2	Interatomic distance (Å)	Clash overlap (Å)
1:A:91:ALA:HA	1:A:94:MET:HE3	1.41	0.98
1:D:145:THR:HG21	1:D:187:VAL:HG11	1.43	0.97
1:E:145:THR:HG21	1:E:187:VAL:HG11	1.48	0.96
1:H:67:ASN:HD21	1:H:126:ARG:HH22	1.10	0.95
1:E:67:ASN:HD21	1:E:126:ARG:HH22	1.14	0.94
1:D:67:ASN:HD21	1:D:126:ARG:HH22	0.96	0.94
1:A:145:THR:HG21	1:A:187:VAL:HG11	1.51	0.90
1:B:131:VAL:HG13	1:B:134:ARG:HB3	1.52	0.88
1:D:67:ASN:HD21	1:D:126:ARG:NH2	1.73	0.87
1:A:64:GLN:HE22	1:B:213:LEU:H	1.22	0.86
1:E:131:VAL:HG13	1:E:134:ARG:HB3	1.59	0.85
1:G:82:GLN:NE2	1:G:86:ARG:HH21	1.75	0.85
1:E:91:ALA:HA	1:E:94:MET:HE3	1.57	0.84
1:A:145:THR:CG2	1:A:187:VAL:HG11	2.08	0.83

Continued on next page...

*Continued from previous page...*

Atom-1	Atom-2	Interatomic distance (Å)	Clash overlap (Å)
1:G:131:VAL:HG13	1:G:134:ARG:HB3	1.61	0.83
1:D:67:ASN:ND2	1:D:126:ARG:HH22	1.75	0.82
1:C:67:ASN:HD21	1:C:126:ARG:HH22	1.25	0.82
1:A:213:LEU:H	1:B:64:GLN:HE22	1.28	0.81
1:B:196:ASP:O	1:B:197:ARG:HD2	1.80	0.81
1:H:74:ASP:HA	1:H:77:ARG:NH1	1.97	0.80
1:H:91:ALA:HA	1:H:94:MET:HE3	1.64	0.80
1:C:217:ASP:HA	1:C:227:ARG:HH21	1.46	0.80
1:C:64:GLN:HE22	1:D:213:LEU:H	1.28	0.79
1:F:67:ASN:HD21	1:F:126:ARG:HH22	1.24	0.79
1:D:91:ALA:HA	1:D:94:MET:HE3	1.63	0.79
1:C:74:ASP:HA	1:C:77:ARG:NH1	1.99	0.78
1:C:131:VAL:HG13	1:C:134:ARG:HB3	1.65	0.77
1:C:140:MET:HA	1:C:140:MET:HE3	1.67	0.76
1:H:150:GLN:O	1:H:154:LEU:HD13	1.86	0.76
1:A:140:MET:HE2	1:B:167:SER:HB3	1.68	0.74
1:E:67:ASN:HD21	1:E:126:ARG:NH2	1.86	0.74
1:H:74:ASP:HA	1:H:77:ARG:HH12	1.53	0.74
1:G:213:LEU:H	1:H:64:GLN:HE22	1.36	0.73
1:A:75:GLU:HB2	3:A:770:HOH:O	1.88	0.73
1:F:36:GLU:HG3	1:F:197:ARG:CZ	2.19	0.72
1:D:150:GLN:O	1:D:154:LEU:HD13	1.88	0.72
1:D:74:ASP:HA	1:D:77:ARG:NH1	2.05	0.72
1:G:64:GLN:HE22	1:H:213:LEU:H	1.35	0.72
1:E:24:TYR:O	1:E:28:GLU:HG3	1.89	0.72
1:C:140:MET:HG3	2:D:503:FNR:H7M3	1.72	0.72
1:E:222:GLU:HG3	1:F:73:GLN:NE2	2.05	0.72
1:H:150:GLN:NE2	1:H:154:LEU:HD11	2.04	0.71
1:A:140:MET:HE2	2:B:501:FNR:H7	1.71	0.71
1:A:222:GLU:HG3	1:B:73:GLN:NE2	2.05	0.71
1:C:140:MET:HE1	1:C:143:TYR:HD2	1.56	0.71
1:B:30:ARG:NH1	2:B:501:FNR:O2P	2.24	0.71
1:C:74:ASP:HA	1:C:77:ARG:HH12	1.55	0.71
1:G:77:ARG:HD3	3:G:644:HOH:O	1.90	0.71
2:C:504:FNR:H7M3	1:D:140:MET:HG3	1.72	0.70
1:D:150:GLN:NE2	1:D:154:LEU:HD11	2.06	0.70
1:G:140:MET:HG3	2:H:507:FNR:H7M3	1.72	0.70
1:E:145:THR:HG21	1:E:187:VAL:CG1	2.21	0.70
1:H:9:LEU:N	1:H:9:LEU:HD23	2.07	0.70
1:E:213:LEU:H	1:F:64:GLN:HE22	1.39	0.70
1:G:163:VAL:HG22	1:G:192:LEU:HG	1.74	0.70

*Continued on next page...*

*Continued from previous page...*

Atom-1	Atom-2	Interatomic distance (Å)	Clash overlap (Å)
1:A:140:MET:CE	1:B:167:SER:HB3	2.22	0.69
1:C:217:ASP:HA	1:C:227:ARG:NH2	2.06	0.69
1:F:130:VAL:O	3:F:758:HOH:O	2.10	0.69
1:D:145:THR:CG2	1:D:187:VAL:HG11	2.19	0.69
1:H:217:ASP:HA	3:H:773:HOH:O	1.92	0.69
1:D:91:ALA:HA	1:D:94:MET:CE	2.23	0.68
2:E:506:FNR:H7	1:F:140:MET:HE2	1.76	0.68
2:A:502:FNR:H7M3	1:B:140:MET:HG3	1.76	0.68
1:A:98:GLU:HG3	1:A:99:ARG:N	2.08	0.67
1:H:67:ASN:HD21	1:H:126:ARG:NH2	1.89	0.67
1:H:67:ASN:ND2	1:H:126:ARG:HH22	1.88	0.67
1:G:87:ALA:CB	1:G:169:PHE:HA	2.24	0.67
1:E:217:ASP:HA	1:E:227:ARG:HH21	1.58	0.67
1:A:227:ARG:HH11	1:A:227:ARG:HG2	1.58	0.67
1:E:154:LEU:HD23	1:F:154:LEU:HD23	1.76	0.67
1:E:67:ASN:ND2	1:E:126:ARG:HH22	1.88	0.66
1:A:25:ARG:NH2	3:B:790:HOH:O	2.28	0.66
1:D:163:VAL:HG22	1:D:192:LEU:HG	1.77	0.66
1:B:204:LEU:HD13	3:B:543:HOH:O	1.95	0.66
1:G:227:ARG:HG2	1:G:227:ARG:HH11	1.61	0.66
1:C:140:MET:HE1	1:C:143:TYR:CD2	2.31	0.65
1:G:82:GLN:HE22	1:G:86:ARG:HH21	1.44	0.65
1:C:67:ASN:HD21	1:C:126:ARG:NH2	1.95	0.65
1:E:125:THR:HB	1:G:227:ARG:HG2	1.78	0.65
1:E:91:ALA:HA	1:E:94:MET:CE	2.26	0.64
1:C:140:MET:CE	1:C:143:TYR:HD2	2.11	0.64
1:G:74:ASP:HA	1:G:77:ARG:NH1	2.12	0.64
1:C:87:ALA:CB	1:C:169:PHE:HA	2.28	0.64
1:C:197:ARG:HB2	1:D:9:LEU:CD2	2.28	0.64
1:B:80:VAL:HG21	1:B:189:TRP:CH2	2.33	0.64
1:F:217:ASP:HA	1:F:227:ARG:HH21	1.62	0.64
1:B:217:ASP:HA	1:B:227:ARG:NH2	2.14	0.63
1:E:165:TRP:CZ2	1:F:140:MET:HE3	2.33	0.63
1:B:131:VAL:HG11	1:B:134:ARG:NE	2.14	0.62
1:D:140:MET:HE3	1:D:140:MET:HA	1.81	0.62
1:C:67:ASN:ND2	1:C:126:ARG:HH22	1.95	0.62
1:C:77:ARG:HD3	3:C:563:HOH:O	2.00	0.62
1:F:67:ASN:HD21	1:F:126:ARG:NH2	1.97	0.62
1:A:140:MET:HE2	1:B:167:SER:CB	2.30	0.62
1:H:41:PRO:HG3	3:H:763:HOH:O	2.00	0.62
1:A:74:ASP:HA	1:A:77:ARG:NH1	2.15	0.61

*Continued on next page...*

*Continued from previous page...*

Atom-1	Atom-2	Interatomic distance (Å)	Clash overlap (Å)
1:C:67:ASN:HB2	1:C:121:THR:OG1	2.01	0.61
1:C:140:MET:HE2	2:D:503:FNR:H7M2	1.81	0.61
1:E:9:LEU:HD23	1:E:9:LEU:N	2.15	0.61
1:H:150:GLN:HE21	1:H:154:LEU:HD11	1.66	0.61
1:D:98:GLU:OE2	1:D:102:LYS:HE3	2.01	0.60
1:F:80:VAL:HG21	1:F:189:TRP:CH2	2.36	0.60
1:E:140:MET:HE2	2:F:505:FNR:H7	1.82	0.60
1:H:77:ARG:HD3	3:H:594:HOH:O	2.02	0.60
1:E:125:THR:HB	1:G:227:ARG:NH1	2.16	0.59
1:G:170:HIS:HA	3:G:1561:HOH:O	2.02	0.59
1:E:80:VAL:HG21	1:E:189:TRP:CH2	2.38	0.59
1:A:213:LEU:H	1:B:64:GLN:NE2	1.98	0.59
1:A:199:TYR:CE2	1:B:9:LEU:HD12	2.38	0.59
1:C:64:GLN:NE2	1:D:213:LEU:H	1.99	0.59
1:D:140:MET:CE	1:D:143:TYR:HD2	2.15	0.59
1:E:145:THR:CG2	1:E:187:VAL:HG11	2.29	0.59
1:B:14:ALA:O	3:B:790:HOH:O	2.16	0.58
1:E:77:ARG:HD3	3:E:562:HOH:O	2.01	0.58
1:D:227:ARG:HG2	1:D:227:ARG:HH11	1.67	0.58
1:H:91:ALA:HA	1:H:94:MET:CE	2.32	0.58
1:C:15:PHE:HB3	1:C:19:GLU:HB2	1.86	0.58
1:D:87:ALA:O	1:D:90:GLU:HB3	2.04	0.58
1:H:227:ARG:HG2	1:H:227:ARG:HH11	1.69	0.58
1:B:14:ALA:N	3:B:790:HOH:O	2.36	0.58
1:F:227:ARG:HH11	1:F:227:ARG:HG2	1.68	0.58
1:G:82:GLN:NE2	1:G:86:ARG:NH2	2.50	0.58
1:C:35:ASP:HB2	1:C:107:LYS:HD3	1.84	0.58
1:A:64:GLN:NE2	1:B:213:LEU:H	1.95	0.58
1:B:131:VAL:CG1	1:B:134:ARG:NE	2.67	0.58
1:F:114:ALA:HB1	1:F:192:LEU:O	2.04	0.58
1:B:90:GLU:OE1	1:B:170:HIS:NE2	2.37	0.57
1:D:120:VAL:O	1:D:187:VAL:HG13	2.03	0.57
1:D:145:THR:HG21	1:D:187:VAL:CG1	2.28	0.57
1:H:30:ARG:NH1	2:H:507:FNR:O2P	2.38	0.57
1:H:80:VAL:HG21	1:H:189:TRP:CH2	2.38	0.57
1:C:197:ARG:HB2	1:D:9:LEU:HD23	1.87	0.57
1:H:199:TYR:CZ	1:H:203:GLU:HG3	2.39	0.57
1:B:24:TYR:O	1:B:28:GLU:HG3	2.05	0.57
1:G:131:VAL:CG1	1:G:134:ARG:NE	2.67	0.57
1:A:52:GLY:O	1:A:56:GLN:HG2	2.05	0.57
1:D:150:GLN:HE21	1:D:154:LEU:HD11	1.68	0.57

*Continued on next page...*

*Continued from previous page...*

Atom-1	Atom-2	Interatomic distance (Å)	Clash overlap (Å)
1:A:9:LEU:N	1:A:9:LEU:HD23	2.20	0.57
2:C:504:FNR:H7M2	1:D:140:MET:HE2	1.87	0.57
1:D:107:LYS:HE2	1:D:109:GLU:O	2.04	0.57
1:E:132:LEU:HD23	1:E:133:GLY:N	2.19	0.57
2:E:506:FNR:H7M3	1:F:140:MET:HG3	1.87	0.57
3:G:1083:HOH:O	1:H:71:VAL:HG13	2.05	0.57
1:H:165:TRP:CZ2	1:H:188:ALA:HB2	2.40	0.57
1:G:131:VAL:HG11	1:G:134:ARG:NE	2.20	0.56
1:D:132:LEU:HD23	1:D:133:GLY:N	2.20	0.56
1:G:140:MET:HE2	1:H:165:TRP:CZ2	2.40	0.56
1:G:99:ARG:HD3	3:G:932:HOH:O	2.05	0.56
1:H:113:LYS:HE3	3:H:1225:HOH:O	2.05	0.56
1:G:140:MET:CE	1:G:143:TYR:HD2	2.19	0.56
1:D:74:ASP:HA	1:D:77:ARG:HH12	1.69	0.56
1:F:67:ASN:ND2	1:F:126:ARG:HH22	2.00	0.56
1:G:56:GLN:OE1	1:H:28:GLU:HG2	2.06	0.56
1:C:77:ARG:HH11	1:C:77:ARG:HB2	1.69	0.55
1:C:163:VAL:HG22	1:C:192:LEU:HG	1.87	0.55
1:A:197:ARG:HB2	1:B:9:LEU:CD2	2.35	0.55
1:C:131:VAL:CG1	1:C:134:ARG:NE	2.70	0.55
1:E:107:LYS:HE2	1:E:109:GLU:O	2.07	0.55
1:F:163:VAL:HG22	1:F:192:LEU:HG	1.86	0.55
1:B:67:ASN:HB2	1:B:121:THR:OG1	2.07	0.55
1:F:197:ARG:HG2	1:F:197:ARG:HH11	1.71	0.55
1:G:132:LEU:HD23	1:G:133:GLY:N	2.21	0.55
1:B:204:LEU:HD22	2:B:501:FNR:O4'	2.07	0.55
1:A:136:HIS:HE2	1:B:90:GLU:CG	2.20	0.55
2:A:502:FNR:H7M2	1:B:140:MET:HE3	1.87	0.55
1:G:87:ALA:HB2	1:G:169:PHE:HA	1.89	0.55
1:C:140:MET:HE2	1:D:165:TRP:CZ2	2.42	0.55
1:E:15:PHE:HB3	1:E:19:GLU:HB2	1.89	0.55
1:G:227:ARG:HG2	1:G:227:ARG:NH1	2.21	0.55
1:G:140:MET:HE1	1:G:143:TYR:HD2	1.71	0.54
1:D:140:MET:HE1	1:D:143:TYR:CD2	2.42	0.54
1:H:220:PHE:HE1	1:H:227:ARG:NH1	2.05	0.54
1:A:25:ARG:CZ	3:B:790:HOH:O	2.55	0.54
1:C:165:TRP:CZ2	1:D:140:MET:HE2	2.42	0.54
1:C:200:GLN:HG2	1:D:10:THR:HG22	1.90	0.54
1:E:220:PHE:HE1	1:E:227:ARG:NH1	2.06	0.54
1:B:217:ASP:HA	1:B:227:ARG:HH21	1.72	0.54
1:D:140:MET:CE	1:D:143:TYR:CD2	2.91	0.53

*Continued on next page...*

*Continued from previous page...*

Atom-1	Atom-2	Interatomic distance (Å)	Clash overlap (Å)
1:E:204:LEU:HD21	1:F:132:LEU:HD13	1.90	0.53
1:E:191:CYS:C	1:E:192:LEU:HD12	2.28	0.53
1:C:165:TRP:CZ2	1:C:188:ALA:HB2	2.42	0.53
1:D:140:MET:HE1	1:D:143:TYR:HD2	1.74	0.53
1:A:197:ARG:HB2	1:B:9:LEU:HD21	1.91	0.53
1:B:131:VAL:HG11	1:B:134:ARG:CZ	2.38	0.53
1:C:171:GLU:OE2	1:C:185:GLU:HG3	2.08	0.53
1:G:64:GLN:NE2	1:H:213:LEU:H	2.05	0.53
1:G:15:PHE:HB3	1:G:19:GLU:HB2	1.91	0.53
1:A:227:ARG:HG2	1:A:227:ARG:NH1	2.25	0.52
1:B:132:LEU:HD23	1:B:133:GLY:N	2.25	0.52
1:A:77:ARG:HH11	1:A:77:ARG:HB2	1.75	0.52
1:A:132:LEU:HD23	1:A:133:GLY:N	2.24	0.52
1:H:77:ARG:HH11	1:H:77:ARG:HB2	1.74	0.52
1:F:30:ARG:NH1	2:F:505:FNR:O2P	2.31	0.52
1:C:24:TYR:O	1:C:28:GLU:HG3	2.10	0.52
1:C:140:MET:CE	1:C:143:TYR:CD2	2.91	0.52
1:B:87:ALA:O	1:B:90:GLU:HG2	2.09	0.52
1:A:217:ASP:HA	1:A:227:ARG:HH21	1.74	0.52
1:D:173:GLU:O	1:D:177:ILE:HG13	2.10	0.52
1:F:72:ARG:O	1:F:77:ARG:NH2	2.43	0.52
1:C:72:ARG:HG3	3:C:1135:HOH:O	2.10	0.51
1:C:102:LYS:HE2	3:C:1164:HOH:O	2.10	0.51
1:G:132:LEU:HD22	3:H:509:HOH:O	2.10	0.51
1:G:227:ARG:NE	3:G:685:HOH:O	2.39	0.51
1:E:132:LEU:HD22	3:F:1645:HOH:O	2.09	0.51
1:E:75:GLU:O	1:E:79:LYS:HG3	2.11	0.51
1:A:98:GLU:HG3	1:A:99:ARG:H	1.75	0.51
1:C:132:LEU:HD23	1:C:133:GLY:N	2.26	0.51
1:C:213:LEU:H	1:D:64:GLN:HE22	1.59	0.51
1:A:74:ASP:HA	1:A:77:ARG:HH12	1.76	0.51
1:B:131:VAL:CG1	1:B:134:ARG:HB3	2.33	0.51
1:C:35:ASP:OD1	1:C:107:LYS:HE3	2.11	0.51
1:B:77:ARG:CB	1:B:77:ARG:HH11	2.24	0.50
1:C:37:PHE:O	1:C:113:LYS:HE2	2.11	0.50
1:C:199:TYR:CZ	1:C:203:GLU:HG3	2.46	0.50
1:F:204:LEU:HD22	2:F:505:FNR:O4'	2.11	0.50
1:D:131:VAL:CG2	1:D:134:ARG:HB3	2.40	0.50
1:D:220:PHE:HE1	1:D:227:ARG:HH12	1.59	0.50
1:B:107:LYS:HE2	1:B:109:GLU:O	2.11	0.50
1:C:227:ARG:HG2	1:C:227:ARG:HH11	1.76	0.50

*Continued on next page...*



*Continued from previous page...*

Atom-1	Atom-2	Interatomic distance (Å)	Clash overlap (Å)
1:B:166:VAL:O	1:B:169:PHE:HE1	1.95	0.50
1:C:90:GLU:OE2	1:D:136:HIS:HE1	1.94	0.50
1:G:30:ARG:NH1	2:G:508:FNR:O3P	2.41	0.50
1:G:191:CYS:C	1:G:192:LEU:HD12	2.31	0.50
1:A:77:ARG:HD3	3:A:593:HOH:O	2.12	0.50
1:B:14:ALA:C	3:B:790:HOH:O	2.49	0.50
1:B:205:ALA:HA	1:B:210:ARG:O	2.11	0.50
1:B:166:VAL:HG12	1:B:169:PHE:CE1	2.47	0.50
1:D:197:ARG:HH11	1:D:197:ARG:HG2	1.76	0.50
1:A:140:MET:CE	1:B:167:SER:CB	2.89	0.50
1:F:36:GLU:HA	1:F:197:ARG:NH2	2.27	0.50
1:C:81:TRP:O	1:C:84:PHE:HB3	2.12	0.50
1:E:52:GLY:O	1:E:56:GLN:HG3	2.12	0.50
1:A:140:MET:CE	2:B:501:FNR:H7	2.41	0.49
1:F:220:PHE:HE1	1:F:227:ARG:HH12	1.59	0.49
1:A:80:VAL:HG21	1:A:189:TRP:CH2	2.47	0.49
1:G:90:GLU:OE2	1:H:136:HIS:HE1	1.94	0.49
2:A:502:FNR:H7M2	1:B:140:MET:CE	2.43	0.49
1:G:67:ASN:HB2	1:G:121:THR:OG1	2.12	0.49
1:G:82:GLN:O	1:G:86:ARG:HG2	2.12	0.49
1:E:227:ARG:HG2	1:E:227:ARG:HH11	1.78	0.49
1:G:140:MET:HE1	1:G:143:TYR:CD2	2.48	0.49
1:E:125:THR:O	1:G:227:ARG:CZ	2.60	0.49
1:E:9:LEU:HB3	1:F:199:TYR:HA	1.95	0.48
1:A:82:GLN:O	1:A:86:ARG:HG3	2.13	0.48
1:E:131:VAL:CG1	1:E:134:ARG:NE	2.76	0.48
1:E:167:SER:HB3	1:F:140:MET:CE	2.44	0.48
1:A:102:LYS:HE2	1:A:207:LYS:O	2.14	0.48
1:E:95:PHE:HZ	3:F:758:HOH:O	1.97	0.48
1:E:213:LEU:H	1:F:64:GLN:NE2	2.07	0.48
1:A:15:PHE:HB3	1:A:19:GLU:HB2	1.95	0.48
1:G:165:TRP:CZ2	1:G:188:ALA:HB2	2.49	0.48
2:C:504:FNR:H5'1	3:C:579:HOH:O	2.13	0.48
1:A:77:ARG:CZ	3:A:898:HOH:O	2.62	0.47
1:B:52:GLY:O	1:B:56:GLN:HG2	2.13	0.47
1:D:217:ASP:HA	1:D:227:ARG:HH21	1.78	0.47
1:E:167:SER:HB3	1:F:140:MET:HE2	1.96	0.47
1:A:136:HIS:HE2	1:B:90:GLU:HG3	1.78	0.47
1:B:35:ASP:HB2	1:B:107:LYS:HD3	1.95	0.47
1:A:120:VAL:O	1:A:187:VAL:HG12	2.14	0.47
3:E:510:HOH:O	1:F:132:LEU:HD22	2.13	0.47

*Continued on next page...*

*Continued from previous page...*

Atom-1	Atom-2	Interatomic distance (Å)	Clash overlap (Å)
1:F:227:ARG:HG2	1:F:227:ARG:NH1	2.30	0.47
1:G:10:THR:O	1:H:197:ARG:HA	2.14	0.47
1:G:199:TYR:HA	1:H:9:LEU:HB3	1.97	0.47
1:H:67:ASN:HB2	1:H:121:THR:OG1	2.14	0.47
1:H:173:GLU:HB3	3:H:1432:HOH:O	2.14	0.47
1:A:195:VAL:HG23	3:A:1133:HOH:O	2.14	0.47
1:F:220:PHE:HE1	1:F:227:ARG:NH1	2.13	0.47
1:A:140:MET:HE3	1:B:165:TRP:CE2	2.49	0.47
1:E:131:VAL:HG13	1:E:134:ARG:CB	2.36	0.47
1:E:153:TRP:CZ3	1:F:58:PRO:HG3	2.51	0.46
1:G:30:ARG:HG2	1:G:154:LEU:HD23	1.97	0.46
1:G:60:VAL:HG22	1:G:132:LEU:O	2.16	0.46
1:A:25:ARG:NH1	3:B:790:HOH:O	2.48	0.46
1:B:131:VAL:HG13	1:B:134:ARG:CB	2.36	0.46
1:C:131:VAL:HG11	1:C:134:ARG:NE	2.29	0.46
1:D:77:ARG:HD3	3:D:665:HOH:O	2.14	0.46
1:F:191:CYS:C	1:F:192:LEU:HD12	2.35	0.46
1:G:140:MET:HE2	2:H:507:FNR:H7M2	1.96	0.46
1:G:202:PRO:HG3	2:G:508:FNR:O1P	2.16	0.46
1:A:132:LEU:HD22	3:B:1644:HOH:O	2.16	0.46
1:C:195:VAL:HG21	1:C:198:LEU:HD21	1.97	0.46
1:H:40:GLU:HG2	1:H:194:PHE:CD2	2.51	0.46
1:D:134:ARG:O	1:D:134:ARG:HG2	2.15	0.46
1:E:131:VAL:HG11	1:E:134:ARG:NE	2.31	0.46
1:G:227:ARG:NH2	3:G:685:HOH:O	2.49	0.46
1:A:191:CYS:C	1:A:192:LEU:HD12	2.36	0.46
1:A:87:ALA:CB	1:A:169:PHE:HA	2.45	0.45
1:E:210:ARG:HA	3:E:1138:HOH:O	2.16	0.45
1:A:42:LEU:N	1:A:42:LEU:HD12	2.31	0.45
1:D:154:LEU:CD1	1:D:154:LEU:N	2.79	0.45
1:D:221:GLU:HG3	1:D:227:ARG:O	2.16	0.45
1:A:131:VAL:HG13	1:A:134:ARG:HB3	1.98	0.45
1:D:52:GLY:O	1:D:56:GLN:HG2	2.16	0.45
1:F:132:LEU:HD23	1:F:133:GLY:N	2.31	0.45
1:G:131:VAL:HG11	1:G:134:ARG:CZ	2.45	0.45
1:B:198:LEU:HD23	3:B:1367:HOH:O	2.15	0.45
1:E:45:GLU:HG2	1:E:49:ARG:HH12	1.80	0.45
1:A:9:LEU:HB2	1:B:198:LEU:O	2.17	0.45
1:A:140:MET:HE3	2:B:501:FNR:H7M2	1.98	0.45
1:A:67:ASN:HB2	1:A:121:THR:OG1	2.15	0.45
1:B:182:ASP:HB2	3:B:816:HOH:O	2.17	0.45

*Continued on next page...*

*Continued from previous page...*

Atom-1	Atom-2	Interatomic distance (Å)	Clash overlap (Å)
1:E:67:ASN:HB2	1:E:121:THR:OG1	2.17	0.45
1:F:36:GLU:HG2	1:F:197:ARG:HG3	1.99	0.45
1:B:116:LEU:HD12	1:B:117:SER:H	1.82	0.45
1:C:131:VAL:HG11	1:C:134:ARG:CZ	2.46	0.45
1:E:98:GLU:O	1:E:101:ALA:HB3	2.17	0.45
1:F:77:ARG:HD3	1:F:111:ILE:O	2.16	0.45
1:F:220:PHE:CE1	1:F:227:ARG:NH1	2.84	0.45
1:D:227:ARG:HG2	1:D:227:ARG:NH1	2.28	0.45
1:E:199:TYR:CZ	1:E:203:GLU:HG3	2.52	0.45
1:G:30:ARG:HA	1:G:157:ARG:HD3	1.99	0.45
1:A:134:ARG:O	1:A:134:ARG:HG2	2.17	0.44
3:A:807:HOH:O	1:B:20:ARG:HD2	2.18	0.44
1:C:124:ARG:HG3	3:C:1418:HOH:O	2.17	0.44
1:A:66:TRP:HA	1:A:121:THR:O	2.18	0.44
1:E:131:VAL:CG1	1:E:134:ARG:HB3	2.40	0.44
1:F:36:GLU:HG3	1:F:197:ARG:NE	2.31	0.44
1:B:191:CYS:C	1:B:192:LEU:HD12	2.38	0.44
1:C:87:ALA:HB2	1:C:169:PHE:HA	2.00	0.44
1:E:40:GLU:H	1:E:40:GLU:HG2	1.50	0.44
1:A:136:HIS:NE2	1:B:90:GLU:OE1	2.50	0.44
1:C:136:HIS:NE2	1:D:90:GLU:OE2	2.50	0.44
1:G:15:PHE:HB3	1:G:19:GLU:CB	2.48	0.44
1:G:82:GLN:HE21	1:G:82:GLN:HB3	1.61	0.44
1:G:140:MET:CE	1:G:143:TYR:CD2	3.00	0.44
1:A:165:TRP:CZ2	1:A:188:ALA:HB2	2.52	0.44
1:E:82:GLN:O	1:E:86:ARG:HG3	2.17	0.44
1:D:197:ARG:HG2	1:D:197:ARG:NH1	2.33	0.44
1:D:199:TYR:CZ	1:D:203:GLU:HG3	2.53	0.44
1:A:145:THR:HG22	1:A:187:VAL:HG11	1.95	0.44
1:A:163:VAL:HG22	1:A:192:LEU:HG	1.99	0.44
1:B:165:TRP:CZ2	1:B:188:ALA:HB2	2.53	0.44
1:H:9:LEU:N	1:H:9:LEU:CD2	2.79	0.44
1:D:117:SER:HA	1:D:190:LEU:O	2.17	0.43
1:E:136:HIS:HE1	1:F:90:GLU:OE2	2.01	0.43
1:G:217:ASP:HA	3:G:685:HOH:O	2.18	0.43
1:H:220:PHE:CE1	1:H:227:ARG:NH1	2.85	0.43
1:A:40:GLU:OE1	1:E:173:GLU:OE2	2.36	0.43
1:E:40:GLU:HA	1:E:41:PRO:HD3	1.92	0.43
1:G:42:LEU:N	1:G:42:LEU:HD12	2.33	0.43
1:A:60:VAL:HG22	1:A:132:LEU:O	2.18	0.43
1:E:104:ARG:NH2	3:E:728:HOH:O	2.41	0.43

*Continued on next page...*

*Continued from previous page...*

Atom-1	Atom-2	Interatomic distance (Å)	Clash overlap (Å)
1:E:140:MET:HE3	2:F:505:FNR:H7M2	2.00	0.43
1:B:57:ALA:HB2	1:B:148:ALA:HA	2.01	0.43
1:B:180:ILE:HA	1:B:181:PRO:HD3	1.79	0.43
2:E:506:FNR:H7M2	1:F:140:MET:HE3	2.01	0.43
1:G:103:TYR:CE1	1:H:132:LEU:HG	2.54	0.43
1:A:31:ARG:HD2	1:A:199:TYR:O	2.18	0.43
1:E:66:TRP:HA	1:E:121:THR:O	2.18	0.43
1:F:199:TYR:CZ	1:F:203:GLU:HG3	2.54	0.43
1:G:107:LYS:HE2	1:G:109:GLU:O	2.18	0.43
2:A:502:FNR:H7	1:B:140:MET:HE2	1.99	0.43
1:F:78:GLU:O	1:F:82:GLN:HG3	2.18	0.43
1:H:145:THR:HG21	1:H:187:VAL:HG21	2.01	0.43
1:A:36:GLU:HG2	1:B:9:LEU:HD11	2.00	0.43
1:A:120:VAL:O	1:A:187:VAL:CG1	2.67	0.43
1:D:202:PRO:HG3	2:D:503:FNR:O1P	2.17	0.43
1:G:74:ASP:HA	1:G:77:ARG:HH12	1.84	0.43
1:C:86:ARG:HA	1:C:86:ARG:HD3	1.90	0.43
1:A:180:ILE:HA	1:A:181:PRO:HD3	1.83	0.43
1:F:52:GLY:O	1:F:56:GLN:HG2	2.19	0.42
1:F:227:ARG:HE	1:H:128:GLY:HA2	1.84	0.42
1:A:180:ILE:HD12	1:A:186:ILE:HD11	2.01	0.42
1:B:78:GLU:HG3	1:B:82:GLN:HE21	1.84	0.42
1:D:10:THR:OG1	1:D:11:ALA:N	2.51	0.42
1:D:203:GLU:HB2	3:D:791:HOH:O	2.18	0.42
1:E:45:GLU:CG	1:E:49:ARG:HH12	2.32	0.42
1:G:140:MET:HE3	1:G:140:MET:HA	2.01	0.42
1:G:108:LEU:HD13	1:H:132:LEU:HD21	2.01	0.42
1:H:197:ARG:NH1	3:H:762:HOH:O	2.52	0.42
1:G:12:ALA:O	1:H:196:ASP:HA	2.19	0.42
1:G:220:PHE:CE1	1:G:227:ARG:NH2	2.87	0.42
1:A:205:ALA:HA	1:A:210:ARG:O	2.20	0.42
1:D:154:LEU:N	1:D:154:LEU:HD12	2.35	0.42
1:H:102:LYS:HB2	1:H:102:LYS:HE3	1.88	0.42
1:A:204:LEU:HD12	2:A:502:FNR:O4'	2.20	0.42
1:G:99:ARG:HD2	1:G:99:ARG:HA	1.86	0.42
1:H:204:LEU:HD22	2:H:507:FNR:O4'	2.19	0.42
1:C:82:GLN:OE1	1:C:86:ARG:NH2	2.52	0.42
1:D:216:GLU:HG2	1:D:217:ASP:N	2.35	0.42
1:E:202:PRO:HB3	2:E:506:FNR:H5'2	2.01	0.42
1:A:56:GLN:HE21	1:A:56:GLN:HB3	1.62	0.42
1:A:99:ARG:HD2	1:A:99:ARG:HA	1.78	0.42

*Continued on next page...*

*Continued from previous page...*

Atom-1	Atom-2	Interatomic distance (Å)	Clash overlap (Å)
1:C:197:ARG:HB2	1:D:9:LEU:HD21	2.02	0.42
1:E:140:MET:HE3	1:F:165:TRP:CZ2	2.55	0.42
1:D:15:PHE:HB3	1:D:19:GLU:HB2	2.01	0.41
1:F:75:GLU:HG3	3:F:1450:HOH:O	2.19	0.41
1:F:165:TRP:CZ2	1:F:188:ALA:HB2	2.55	0.41
1:G:9:LEU:HD23	1:G:9:LEU:N	2.35	0.41
1:G:198:LEU:O	1:H:9:LEU:HB2	2.20	0.41
1:A:194:PHE:CB	1:E:86:ARG:HD3	2.50	0.41
1:A:210:ARG:HG3	3:A:1528:HOH:O	2.20	0.41
1:C:196:ASP:OD1	1:C:197:ARG:HG2	2.19	0.41
1:D:36:GLU:O	1:D:195:VAL:HG12	2.19	0.41
1:D:104:ARG:HD3	3:D:1142:HOH:O	2.20	0.41
1:G:213:LEU:H	1:H:64:GLN:NE2	2.12	0.41
1:D:180:ILE:HA	1:D:181:PRO:HD3	1.80	0.41
1:G:180:ILE:HA	1:G:181:PRO:HD3	1.80	0.41
1:H:117:SER:HA	1:H:190:LEU:O	2.20	0.41
1:D:220:PHE:CE1	1:D:227:ARG:NH1	2.88	0.41
1:A:99:ARG:NH2	3:A:1528:HOH:O	2.53	0.41
3:G:1083:HOH:O	1:H:73:GLN:HB2	2.20	0.41
1:G:152:LEU:HD23	1:G:152:LEU:C	2.41	0.41
1:A:9:LEU:N	1:A:9:LEU:CD2	2.84	0.41
1:E:63:MET:SD	1:E:141:ASP:HB3	2.60	0.41
1:G:199:TYR:CZ	1:G:203:GLU:HG3	2.56	0.41
1:A:227:ARG:HB3	3:A:1053:HOH:O	2.21	0.41
1:C:77:ARG:HH11	1:C:77:ARG:CB	2.33	0.41
1:C:91:ALA:O	1:C:94:MET:HB2	2.21	0.41
1:C:137:ASN:HA	1:C:138:PRO:HD2	1.94	0.41
1:E:30:ARG:NH1	2:E:506:FNR:O2P	2.46	0.41
1:E:192:LEU:HD12	1:E:192:LEU:N	2.35	0.41
1:E:72:ARG:NH2	3:E:1203:HOH:O	2.53	0.41
1:H:227:ARG:HG2	1:H:227:ARG:NH1	2.34	0.41
1:A:36:GLU:CG	1:B:9:LEU:HD11	2.51	0.40
1:C:56:GLN:HE21	1:C:56:GLN:HB3	1.64	0.40
1:H:132:LEU:HD23	1:H:133:GLY:N	2.35	0.40
1:A:114:ALA:HB1	1:A:192:LEU:O	2.21	0.40
1:C:40:GLU:O	1:C:40:GLU:HG3	2.20	0.40
1:D:85:GLN:OE1	1:D:85:GLN:HA	2.21	0.40
1:D:131:VAL:HG23	1:D:134:ARG:HB3	2.03	0.40
1:G:192:LEU:HD12	1:G:192:LEU:N	2.36	0.40
1:A:213:LEU:N	1:B:64:GLN:HE22	2.07	0.40
1:F:84:PHE:HB2	1:F:169:PHE:CE2	2.56	0.40

*Continued on next page...*

Continued from previous page...

Atom-1	Atom-2	Interatomic distance (Å)	Clash overlap (Å)
1:H:168:ILE:O	1:H:168:ILE:HG22	2.20	0.40
1:A:27:ILE:HG23	1:B:151:ASN:ND2	2.36	0.40

There are no symmetry-related clashes.

## 5.3 Torsion angles [i](#)

### 5.3.1 Protein backbone [i](#)

In the following table, the Percentiles column shows the percent Ramachandran outliers of the chain as a percentile score with respect to all X-ray entries followed by that with respect to entries of similar resolution.

The Analysed column shows the number of residues for which the backbone conformation was analysed, and the total number of residues.

Mol	Chain	Analysed	Favoured	Allowed	Outliers	Percentiles	
1	A	217/230 (94%)	211 (97%)	6 (3%)	0	100	100
1	B	217/230 (94%)	216 (100%)	1 (0%)	0	100	100
1	C	217/230 (94%)	210 (97%)	7 (3%)	0	100	100
1	D	217/230 (94%)	213 (98%)	4 (2%)	0	100	100
1	E	217/230 (94%)	212 (98%)	5 (2%)	0	100	100
1	F	217/230 (94%)	215 (99%)	2 (1%)	0	100	100
1	G	217/230 (94%)	213 (98%)	4 (2%)	0	100	100
1	H	217/230 (94%)	213 (98%)	4 (2%)	0	100	100
All	All	1736/1840 (94%)	1703 (98%)	33 (2%)	0	100	100

There are no Ramachandran outliers to report.

### 5.3.2 Protein sidechains [i](#)

In the following table, the Percentiles column shows the percent sidechain outliers of the chain as a percentile score with respect to all X-ray entries followed by that with respect to entries of similar resolution.

The Analysed column shows the number of residues for which the sidechain conformation was analysed, and the total number of residues.

Mol	Chain	Analysed	Rotameric	Outliers	Percentiles	
1	A	178/187 (95%)	166 (93%)	12 (7%)	16	13
1	B	178/187 (95%)	173 (97%)	5 (3%)	43	47
1	C	178/187 (95%)	170 (96%)	8 (4%)	27	27
1	D	178/187 (95%)	172 (97%)	6 (3%)	37	39
1	E	178/187 (95%)	168 (94%)	10 (6%)	21	18
1	F	178/187 (95%)	170 (96%)	8 (4%)	27	27
1	G	178/187 (95%)	170 (96%)	8 (4%)	27	27
1	H	178/187 (95%)	167 (94%)	11 (6%)	18	15
All	All	1424/1496 (95%)	1356 (95%)	68 (5%)	25	24

All (68) residues with a non-rotameric sidechain are listed below:

Mol	Chain	Res	Type
1	A	9	LEU
1	A	30	ARG
1	A	56	GLN
1	A	75	GLU
1	A	77	ARG
1	A	98	GLU
1	A	99	ARG
1	A	131	VAL
1	A	132	LEU
1	A	154	LEU
1	A	169	PHE
1	A	197	ARG
1	B	30	ARG
1	B	96	SER
1	B	117	SER
1	B	140	MET
1	B	154	LEU
1	C	30	ARG
1	C	44	GLU
1	C	56	GLN
1	C	77	ARG
1	C	86	ARG
1	C	132	LEU
1	C	140	MET
1	C	169	PHE
1	D	30	ARG
1	D	72	ARG

*Continued on next page...*

*Continued from previous page...*

Mol	Chain	Res	Type
1	D	77	ARG
1	D	99	ARG
1	D	140	MET
1	D	187	VAL
1	E	9	LEU
1	E	30	ARG
1	E	40	GLU
1	E	56	GLN
1	E	77	ARG
1	E	132	LEU
1	E	140	MET
1	E	154	LEU
1	E	187	VAL
1	E	204	LEU
1	F	30	ARG
1	F	44	GLU
1	F	75	GLU
1	F	96	SER
1	F	98	GLU
1	F	117	SER
1	F	140	MET
1	F	154	LEU
1	G	9	LEU
1	G	30	ARG
1	G	56	GLN
1	G	77	ARG
1	G	132	LEU
1	G	140	MET
1	G	169	PHE
1	G	204	LEU
1	H	9	LEU
1	H	18	ASP
1	H	30	ARG
1	H	56	GLN
1	H	72	ARG
1	H	77	ARG
1	H	99	ARG
1	H	132	LEU
1	H	169	PHE
1	H	204	LEU
1	H	210	ARG

Sometimes sidechains can be flipped to improve hydrogen bonding and reduce clashes. All (37)



such sidechains are listed below:

Mol	Chain	Res	Type
1	A	56	GLN
1	A	64	GLN
1	A	211	GLN
1	B	56	GLN
1	B	64	GLN
1	B	73	GLN
1	B	82	GLN
1	C	56	GLN
1	C	64	GLN
1	C	67	ASN
1	C	211	GLN
1	D	64	GLN
1	D	67	ASN
1	D	82	GLN
1	D	136	HIS
1	D	139	GLN
1	D	150	GLN
1	D	211	GLN
1	E	67	ASN
1	E	136	HIS
1	E	211	GLN
1	F	56	GLN
1	F	64	GLN
1	F	67	ASN
1	F	73	GLN
1	F	100	GLN
1	F	211	GLN
1	G	64	GLN
1	G	82	GLN
1	G	136	HIS
1	H	56	GLN
1	H	64	GLN
1	H	67	ASN
1	H	82	GLN
1	H	136	HIS
1	H	150	GLN
1	H	211	GLN

### 5.3.3 RNA

There are no RNA molecules in this entry.

## 5.4 Non-standard residues in protein, DNA, RNA chains [i](#)

There are no non-standard protein/DNA/RNA residues in this entry.

## 5.5 Carbohydrates [i](#)

There are no monosaccharides in this entry.

## 5.6 Ligand geometry [i](#)

8 ligands are modelled in this entry.

In the following table, the Counts columns list the number of bonds (or angles) for which Mogul statistics could be retrieved, the number of bonds (or angles) that are observed in the model and the number of bonds (or angles) that are defined in the Chemical Component Dictionary. The Link column lists molecule types, if any, to which the group is linked. The Z score for a bond length (or angle) is the number of standard deviations the observed value is removed from the expected value. A bond length (or angle) with  $|Z| > 2$  is considered an outlier worth inspection. RMSZ is the root-mean-square of all Z scores of the bond lengths (or angles).

Mol	Type	Chain	Res	Link	Bond lengths			Bond angles		
					Counts	RMSZ	# Z  > 2	Counts	RMSZ	# Z  > 2
2	FNR	D	503	-	32,33,33	1.96	10 (31%)	40,50,50	1.83	11 (27%)
2	FNR	A	502	-	32,33,33	2.06	11 (34%)	40,50,50	2.34	14 (35%)
2	FNR	F	505	-	32,33,33	2.12	12 (37%)	40,50,50	1.57	7 (17%)
2	FNR	E	506	-	32,33,33	2.10	12 (37%)	40,50,50	1.51	8 (20%)
2	FNR	H	507	-	32,33,33	2.00	12 (37%)	40,50,50	1.58	7 (17%)
2	FNR	B	501	-	32,33,33	2.08	12 (37%)	40,50,50	1.58	7 (17%)
2	FNR	G	508	-	32,33,33	1.93	11 (34%)	40,50,50	1.79	11 (27%)
2	FNR	C	504	-	32,33,33	2.07	13 (40%)	40,50,50	2.36	13 (32%)

In the following table, the Chirals column lists the number of chiral outliers, the number of chiral centers analysed, the number of these observed in the model and the number defined in the Chemical Component Dictionary. Similar counts are reported in the Torsion and Rings columns. '-' means no outliers of that kind were identified.

Mol	Type	Chain	Res	Link	Chirals	Torsions	Rings
2	FNR	D	503	-	-	0/18/18/18	0/3/3/3
2	FNR	A	502	-	-	7/18/18/18	0/3/3/3
2	FNR	F	505	-	-	2/18/18/18	0/3/3/3
2	FNR	E	506	-	-	2/18/18/18	0/3/3/3

*Continued on next page...*

Continued from previous page...

Mol	Type	Chain	Res	Link	Chirals	Torsions	Rings
2	FNR	H	507	-	-	2/18/18/18	0/3/3/3
2	FNR	B	501	-	-	2/18/18/18	0/3/3/3
2	FNR	G	508	-	-	0/18/18/18	0/3/3/3
2	FNR	C	504	-	-	5/18/18/18	0/3/3/3

All (93) bond length outliers are listed below:

Mol	Chain	Res	Type	Atoms	Z	Observed(Å)	Ideal(Å)
2	E	506	FNR	C4A-N5	4.46	1.45	1.35
2	C	504	FNR	C4A-N5	4.40	1.45	1.35
2	A	502	FNR	C4A-N5	4.36	1.45	1.35
2	D	503	FNR	C4'-C3'	4.19	1.61	1.53
2	F	505	FNR	C4A-N5	4.15	1.44	1.35
2	H	507	FNR	C5A-C9A	4.10	1.45	1.40
2	D	503	FNR	C4A-N5	4.01	1.44	1.35
2	B	501	FNR	C4A-N5	3.96	1.44	1.35
2	H	507	FNR	C4A-N5	3.90	1.44	1.35
2	E	506	FNR	C6-C7	3.75	1.45	1.39
2	G	508	FNR	C9-C9A	3.70	1.45	1.39
2	G	508	FNR	C4A-N5	3.69	1.43	1.35
2	D	503	FNR	C6-C7	3.69	1.45	1.39
2	C	504	FNR	C6-C7	3.68	1.45	1.39
2	A	502	FNR	C6-C7	3.65	1.44	1.39
2	F	505	FNR	C6-C7	3.61	1.44	1.39
2	E	506	FNR	C9-C9A	3.57	1.45	1.39
2	F	505	FNR	C5A-C9A	3.56	1.44	1.40
2	B	501	FNR	C9-C9A	3.53	1.45	1.39
2	E	506	FNR	C5A-C9A	3.49	1.44	1.40
2	F	505	FNR	C9-C9A	3.47	1.45	1.39
2	G	508	FNR	C9A-N10	3.42	1.47	1.41
2	B	501	FNR	C6-C7	3.40	1.44	1.39
2	C	504	FNR	C2'-C3'	-3.34	1.47	1.53
2	H	507	FNR	C6-C7	3.34	1.44	1.39
2	B	501	FNR	CAA-N10	3.28	1.44	1.38
2	D	503	FNR	C9-C9A	3.28	1.45	1.39
2	A	502	FNR	C9-C9A	3.25	1.44	1.39
2	B	501	FNR	C5A-C9A	3.20	1.44	1.40
2	C	504	FNR	C9-C9A	3.20	1.44	1.39
2	G	508	FNR	C4'-C3'	3.19	1.59	1.53
2	A	502	FNR	C6-C5A	3.17	1.44	1.39
2	G	508	FNR	C6-C7	3.17	1.44	1.39
2	F	505	FNR	C9A-N10	3.14	1.46	1.41

Continued on next page...

*Continued from previous page...*

Mol	Chain	Res	Type	Atoms	Z	Observed(Å)	Ideal(Å)
2	H	507	FNR	CAA-N10	3.13	1.44	1.38
2	H	507	FNR	C9-C9A	3.01	1.44	1.39
2	A	502	FNR	C2'-C3'	-2.92	1.48	1.53
2	A	502	FNR	C5A-C9A	2.92	1.43	1.40
2	C	504	FNR	CAA-N10	2.92	1.43	1.38
2	E	506	FNR	CAA-N10	2.91	1.43	1.38
2	C	504	FNR	C5A-C9A	2.90	1.43	1.40
2	E	506	FNR	C6-C5A	2.90	1.44	1.39
2	B	501	FNR	C9A-N10	2.88	1.46	1.41
2	B	501	FNR	C5'-C4'	2.88	1.55	1.51
2	E	506	FNR	C9A-N10	2.85	1.46	1.41
2	D	503	FNR	CAA-N10	2.85	1.43	1.38
2	A	502	FNR	C4-N3	2.85	1.44	1.38
2	F	505	FNR	CAA-N10	2.84	1.43	1.38
2	F	505	FNR	C6-C5A	2.83	1.43	1.39
2	C	504	FNR	C6-C5A	2.83	1.43	1.39
2	A	502	FNR	CAA-N10	2.82	1.43	1.38
2	E	506	FNR	C4-N3	2.76	1.44	1.38
2	D	503	FNR	C4-N3	2.76	1.44	1.38
2	A	502	FNR	C5'-C4'	-2.75	1.47	1.51
2	F	505	FNR	C4-N3	2.74	1.43	1.38
2	G	508	FNR	CAA-N10	2.71	1.43	1.38
2	H	507	FNR	C6-C5A	2.71	1.43	1.39
2	D	503	FNR	O3'-C3'	2.68	1.49	1.43
2	B	501	FNR	C4-N3	2.59	1.43	1.38
2	D	503	FNR	C5A-N5	2.59	1.44	1.39
2	C	504	FNR	C4-N3	2.59	1.43	1.38
2	C	504	FNR	C5'-C4'	-2.58	1.48	1.51
2	C	504	FNR	C1'-C2'	2.57	1.56	1.52
2	A	502	FNR	C9A-N10	2.56	1.45	1.41
2	H	507	FNR	C9A-N10	2.55	1.45	1.41
2	C	504	FNR	C9A-N10	2.51	1.45	1.41
2	B	501	FNR	C1'-C2'	2.51	1.56	1.52
2	F	505	FNR	C5'-C4'	2.50	1.55	1.51
2	B	501	FNR	C4'-C3'	2.49	1.58	1.53
2	G	508	FNR	C5A-N5	2.49	1.44	1.39
2	F	505	FNR	C1'-C2'	2.45	1.56	1.52
2	D	503	FNR	C6-C5A	2.44	1.43	1.39
2	A	502	FNR	C5A-N5	2.40	1.44	1.39
2	B	501	FNR	C6-C5A	2.40	1.43	1.39
2	F	505	FNR	C5A-N5	2.36	1.43	1.39
2	B	501	FNR	C5A-N5	2.36	1.43	1.39

*Continued on next page...*

Continued from previous page...

Mol	Chain	Res	Type	Atoms	Z	Observed(Å)	Ideal(Å)
2	F	505	FNR	C4'-C3'	2.34	1.57	1.53
2	E	506	FNR	C5A-N5	2.34	1.43	1.39
2	C	504	FNR	C5A-N5	2.31	1.43	1.39
2	H	507	FNR	C1'-C2'	2.30	1.55	1.52
2	G	508	FNR	C4-N3	2.28	1.43	1.38
2	H	507	FNR	C4-N3	2.26	1.43	1.38
2	H	507	FNR	C5'-C4'	2.24	1.55	1.51
2	H	507	FNR	C5A-N5	2.24	1.43	1.39
2	G	508	FNR	O3'-C3'	2.23	1.48	1.43
2	D	503	FNR	C9A-N10	2.19	1.45	1.41
2	E	506	FNR	C4'-C3'	2.18	1.57	1.53
2	E	506	FNR	O3'-C3'	2.15	1.48	1.43
2	E	506	FNR	C8M-C8	2.12	1.55	1.51
2	C	504	FNR	C8M-C8	2.08	1.55	1.51
2	G	508	FNR	C8-C7	2.05	1.46	1.40
2	H	507	FNR	C8M-C8	2.03	1.55	1.51
2	G	508	FNR	C6-C5A	2.02	1.42	1.39

All (78) bond angle outliers are listed below:

Mol	Chain	Res	Type	Atoms	Z	Observed(°)	Ideal(°)
2	C	504	FNR	C5'-C4'-C3'	-8.58	95.62	112.20
2	A	502	FNR	C5'-C4'-C3'	-8.10	96.55	112.20
2	A	502	FNR	O1P-P-O5'	-5.76	91.42	106.73
2	C	504	FNR	O1P-P-O5'	-5.46	92.21	106.73
2	G	508	FNR	C5'-C4'-C3'	-5.07	102.40	112.20
2	D	503	FNR	C5'-C4'-C3'	-5.00	102.54	112.20
2	B	501	FNR	C4-N3-C2	-4.35	120.07	126.34
2	F	505	FNR	C4-N3-C2	-4.23	120.24	126.34
2	E	506	FNR	C4-N3-C2	-4.23	120.25	126.34
2	D	503	FNR	C4-N3-C2	-4.18	120.32	126.34
2	C	504	FNR	C4-N3-C2	-4.17	120.34	126.34
2	A	502	FNR	C4-N3-C2	-4.16	120.35	126.34
2	H	507	FNR	C4-N3-C2	-4.11	120.42	126.34
2	G	508	FNR	C4-N3-C2	-3.88	120.75	126.34
2	C	504	FNR	C4'-C3'-C2'	3.67	120.99	113.36
2	B	501	FNR	N3-C2-N1	3.42	121.30	115.80
2	H	507	FNR	N3-C2-N1	3.38	121.23	115.80
2	A	502	FNR	O3P-P-O2P	3.35	123.80	110.68
2	F	505	FNR	N3-C2-N1	3.34	121.16	115.80
2	A	502	FNR	C4'-C3'-C2'	3.31	120.24	113.36
2	B	501	FNR	P-O5'-C5'	3.28	127.33	118.30

Continued on next page...

*Continued from previous page...*

Mol	Chain	Res	Type	Atoms	Z	Observed(°)	Ideal(°)
2	C	504	FNR	O3P-P-O2P	3.27	123.47	110.68
2	C	504	FNR	N3-C2-N1	3.23	120.99	115.80
2	A	502	FNR	N3-C2-N1	3.23	120.99	115.80
2	E	506	FNR	N3-C2-N1	3.21	120.96	115.80
2	F	505	FNR	P-O5'-C5'	3.20	127.10	118.30
2	D	503	FNR	N3-C2-N1	3.07	120.74	115.80
2	G	508	FNR	N3-C2-N1	3.01	120.64	115.80
2	C	504	FNR	O4'-C4'-C5'	2.95	116.55	109.92
2	G	508	FNR	O4'-C4'-C5'	2.95	116.54	109.92
2	G	508	FNR	C4'-C3'-C2'	2.86	119.31	113.36
2	A	502	FNR	C1'-C2'-C3'	-2.85	101.81	109.79
2	A	502	FNR	O4'-C4'-C5'	2.85	116.33	109.92
2	D	503	FNR	O3P-P-O5'	-2.85	99.16	106.73
2	C	504	FNR	C1'-C2'-C3'	-2.83	101.88	109.79
2	D	503	FNR	C4'-C3'-C2'	2.80	119.18	113.36
2	E	506	FNR	O1P-P-O5'	-2.77	99.35	106.73
2	H	507	FNR	O1P-P-O5'	-2.77	99.36	106.73
2	D	503	FNR	C8M-C8-C9	-2.65	114.59	119.49
2	H	507	FNR	P-O5'-C5'	2.59	125.42	118.30
2	G	508	FNR	C6-C5A-C9A	2.58	122.39	119.67
2	F	505	FNR	O1P-P-O5'	-2.53	99.99	106.73
2	E	506	FNR	P-O5'-C5'	2.43	124.98	118.30
2	E	506	FNR	O4-C4-C4A	-2.42	121.69	127.24
2	D	503	FNR	O4-C4-C4A	-2.41	121.71	127.24
2	F	505	FNR	O3P-P-O2P	2.40	120.07	110.68
2	H	507	FNR	O3P-P-O2P	2.39	120.03	110.68
2	D	503	FNR	C1'-N10-C9A	-2.38	116.54	120.51
2	H	507	FNR	C8M-C8-C9	-2.36	115.12	119.49
2	C	504	FNR	O4-C4-C4A	-2.34	121.88	127.24
2	B	501	FNR	O3P-P-O2P	2.33	119.79	110.68
2	H	507	FNR	O4-C4-C4A	-2.32	121.91	127.24
2	A	502	FNR	C8M-C8-C9	-2.32	115.20	119.49
2	A	502	FNR	O4-C4-C4A	-2.32	121.93	127.24
2	E	506	FNR	O3P-P-O2P	2.31	119.72	110.68
2	G	508	FNR	O3'-C3'-C2'	-2.30	103.25	108.81
2	D	503	FNR	C8M-C8-C7	2.30	125.45	120.74
2	F	505	FNR	O4-C4-C4A	-2.28	122.02	127.24
2	B	501	FNR	C8M-C8-C9	-2.27	115.29	119.49
2	E	506	FNR	C8M-C8-C9	-2.26	115.31	119.49
2	B	501	FNR	O4-C4-C4A	-2.25	122.09	127.24
2	D	503	FNR	O4'-C4'-C5'	2.24	114.96	109.92
2	F	505	FNR	C8M-C8-C9	-2.23	115.37	119.49

*Continued on next page...*

Continued from previous page...

Mol	Chain	Res	Type	Atoms	Z	Observed(°)	Ideal(°)
2	G	508	FNR	C8M-C8-C9	-2.21	115.41	119.49
2	A	502	FNR	O3P-P-O5'	2.20	112.59	106.73
2	C	504	FNR	O3P-P-O5'	2.18	112.54	106.73
2	C	504	FNR	C8M-C8-C9	-2.18	115.46	119.49
2	C	504	FNR	C1'-N10-C9A	-2.18	116.88	120.51
2	G	508	FNR	C1'-C2'-C3'	-2.15	103.77	109.79
2	G	508	FNR	C4A-C4-N3	2.14	118.70	112.31
2	G	508	FNR	O4-C4-C4A	-2.14	122.33	127.24
2	D	503	FNR	C4A-C4-N3	2.13	118.65	112.31
2	A	502	FNR	C1'-N10-C9A	-2.11	116.99	120.51
2	B	501	FNR	O1P-P-O5'	-2.09	101.16	106.73
2	A	502	FNR	O4'-C4'-C3'	2.08	114.16	109.10
2	E	506	FNR	C4A-C4-N3	2.05	118.41	112.31
2	A	502	FNR	C4A-C4-N3	2.03	118.35	112.31
2	C	504	FNR	C4A-C4-N3	2.02	118.33	112.31

There are no chirality outliers.

All (20) torsion outliers are listed below:

Mol	Chain	Res	Type	Atoms
2	A	502	FNR	C3'-C4'-C5'-O5'
2	A	502	FNR	O4'-C4'-C5'-O5'
2	B	501	FNR	C3'-C4'-C5'-O5'
2	B	501	FNR	O4'-C4'-C5'-O5'
2	C	504	FNR	C3'-C4'-C5'-O5'
2	C	504	FNR	O4'-C4'-C5'-O5'
2	E	506	FNR	C3'-C4'-C5'-O5'
2	E	506	FNR	O4'-C4'-C5'-O5'
2	F	505	FNR	C3'-C4'-C5'-O5'
2	F	505	FNR	O4'-C4'-C5'-O5'
2	H	507	FNR	C3'-C4'-C5'-O5'
2	H	507	FNR	O4'-C4'-C5'-O5'
2	A	502	FNR	C2'-C3'-C4'-O4'
2	A	502	FNR	C2'-C3'-C4'-C5'
2	C	504	FNR	C2'-C3'-C4'-O4'
2	A	502	FNR	O3'-C3'-C4'-O4'
2	A	502	FNR	O3'-C3'-C4'-C5'
2	C	504	FNR	C2'-C3'-C4'-C5'
2	A	502	FNR	C5'-O5'-P-O3P
2	C	504	FNR	C5'-O5'-P-O3P

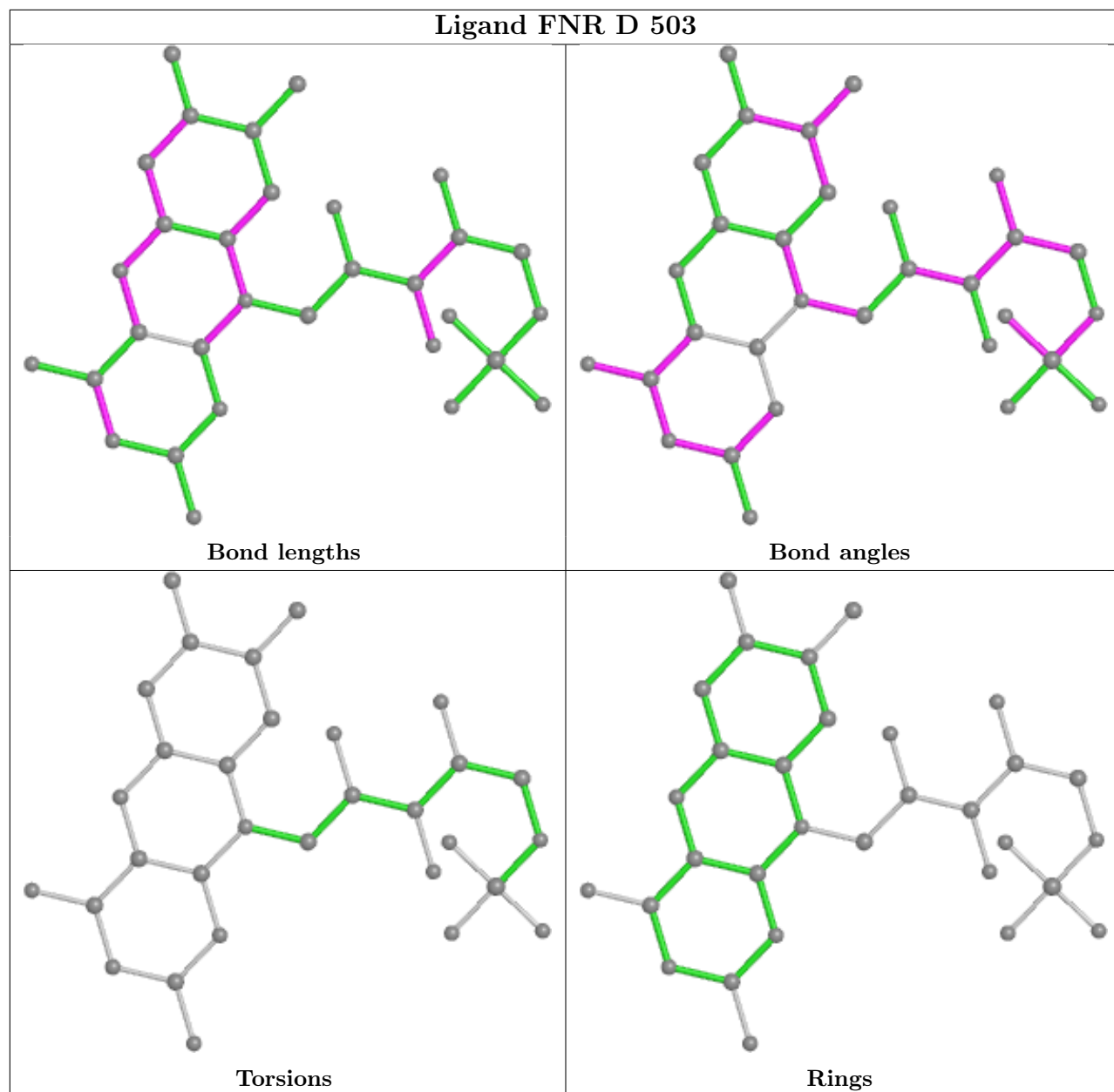
There are no ring outliers.

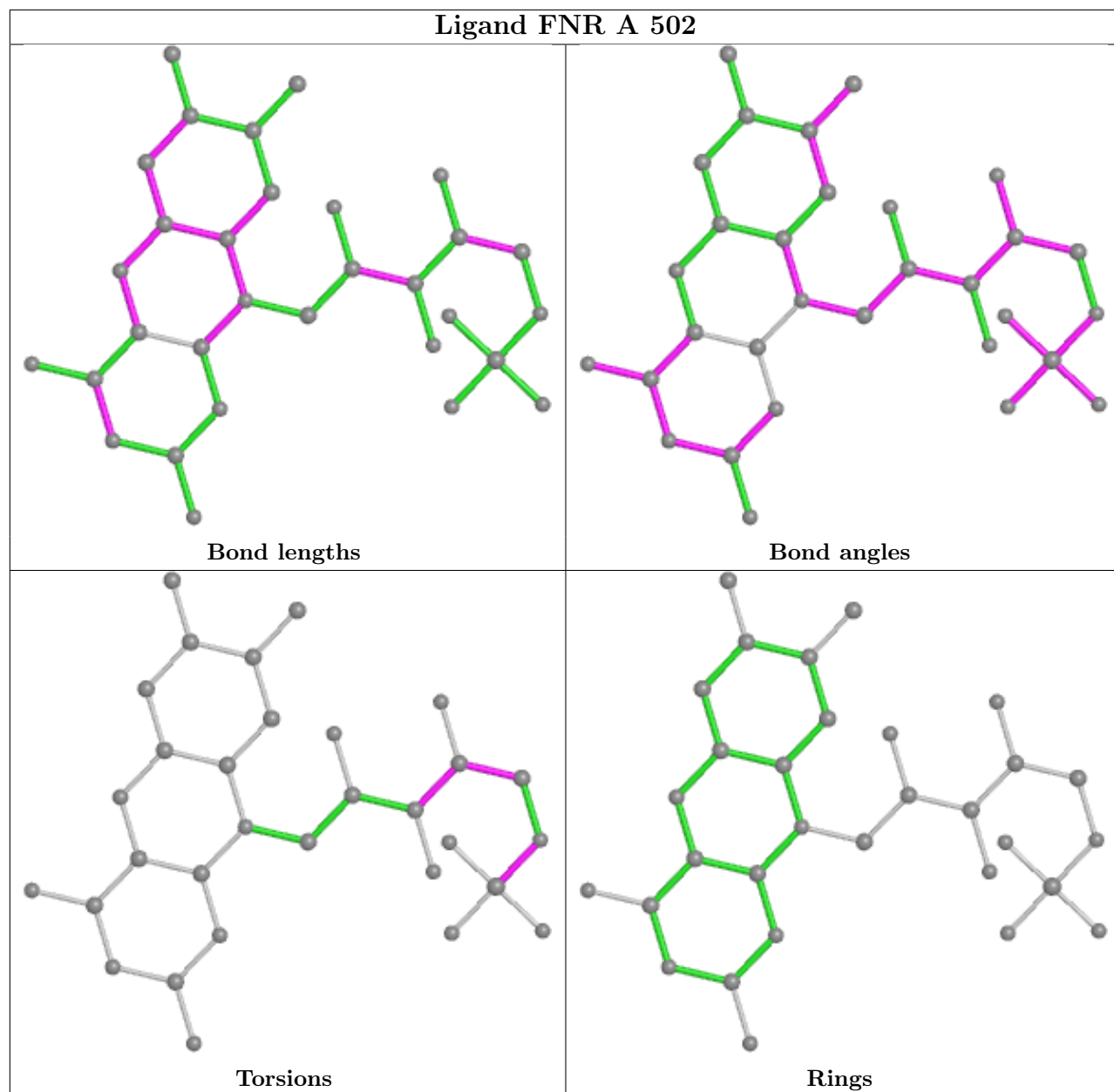
8 monomers are involved in 31 short contacts:

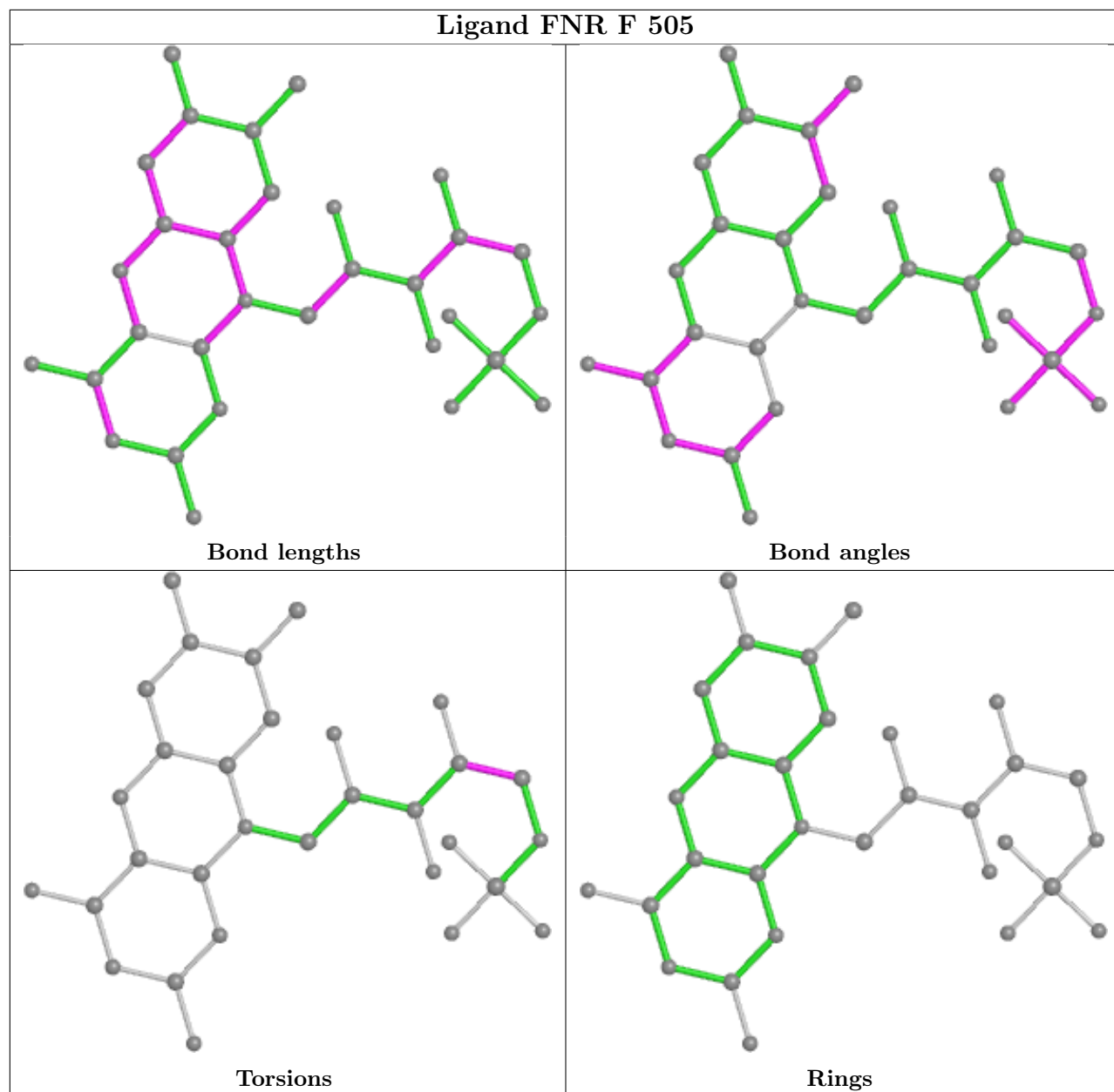
Mol	Chain	Res	Type	Clashes	Symm-Clashes
2	D	503	FNR	3	0
2	A	502	FNR	5	0
2	F	505	FNR	4	0
2	E	506	FNR	5	0
2	H	507	FNR	4	0
2	B	501	FNR	5	0
2	G	508	FNR	2	0
2	C	504	FNR	3	0

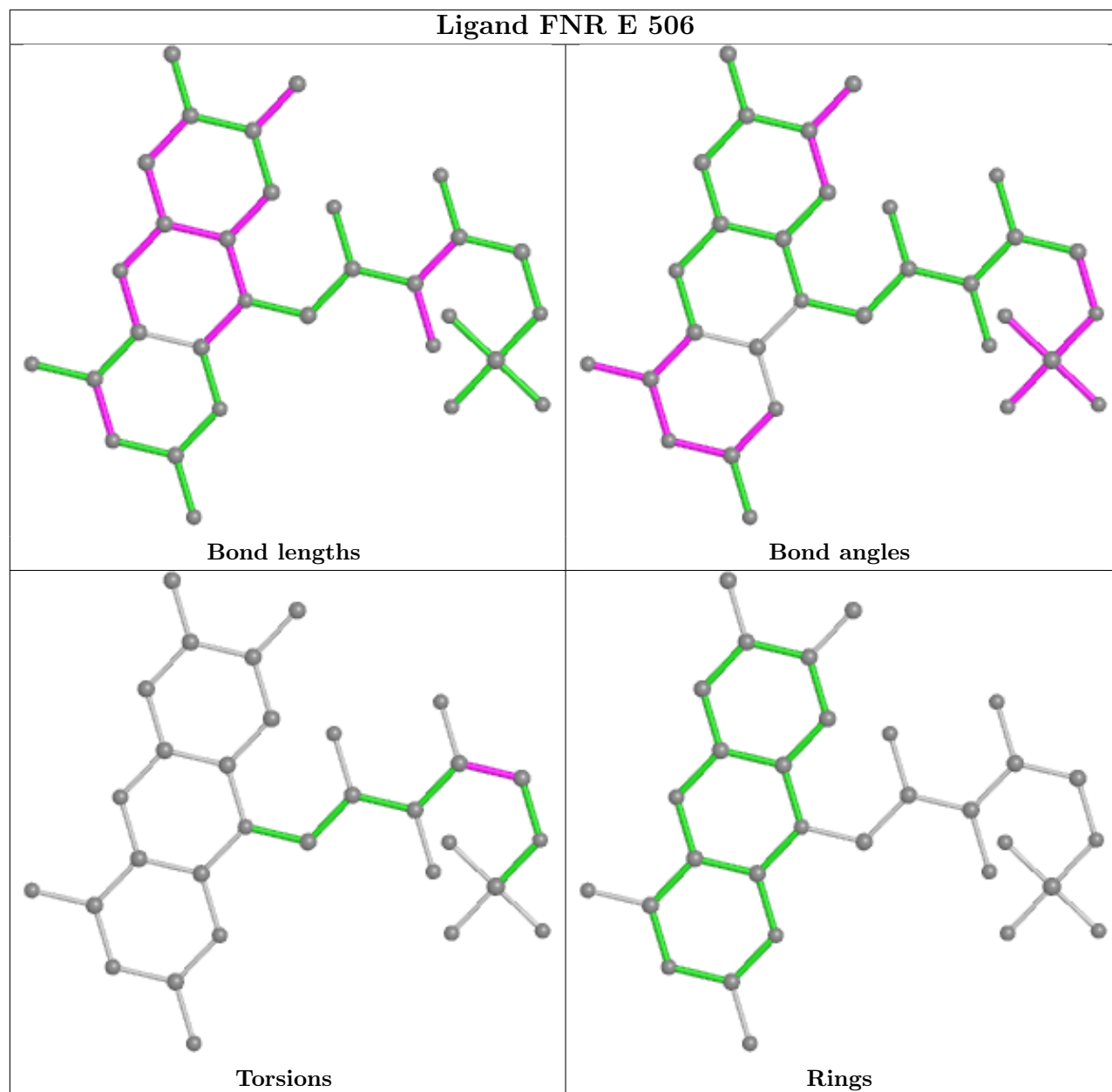
The following is a two-dimensional graphical depiction of Mogul quality analysis of bond lengths, bond angles, torsion angles, and ring geometry for all instances of the Ligand of Interest. In addition, ligands with molecular weight > 250 and outliers as shown on the validation Tables will also be included. For torsion angles, if less than 5% of the Mogul distribution of torsion angles is within 10 degrees of the torsion angle in question, then that torsion angle is considered an outlier. Any bond that is central to one or more torsion angles identified as an outlier by Mogul will be highlighted in the graph. For rings, the root-mean-square deviation (RMSD) between the ring in question and similar rings identified by Mogul is calculated over all ring torsion angles. If the average RMSD is greater than 60 degrees and the minimal RMSD between the ring in question and any Mogul-identified rings is also greater than 60 degrees, then that ring is considered an outlier. The outliers are highlighted in purple. The color gray indicates Mogul did not find sufficient equivalents in the CSD to analyse the geometry.

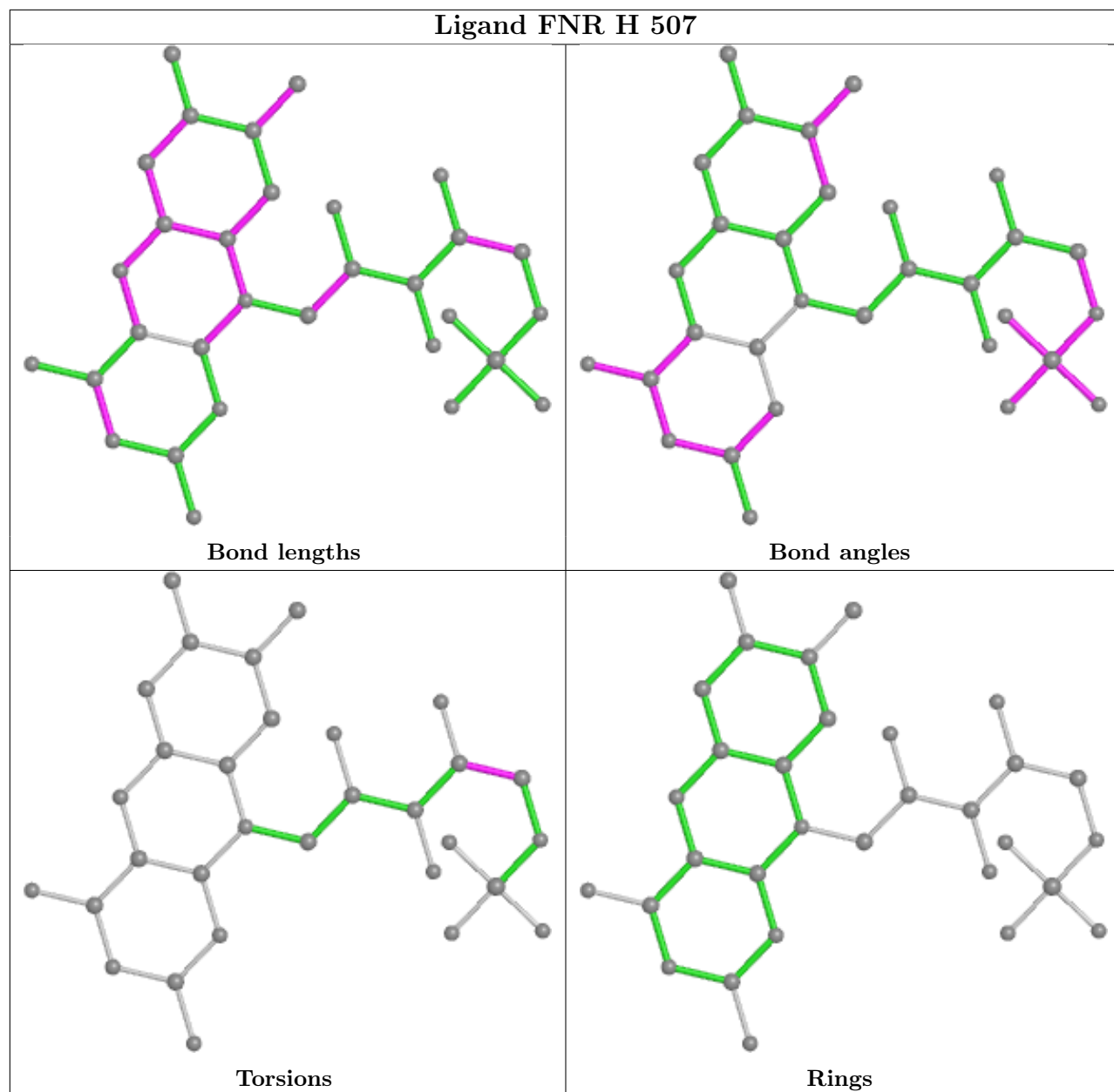


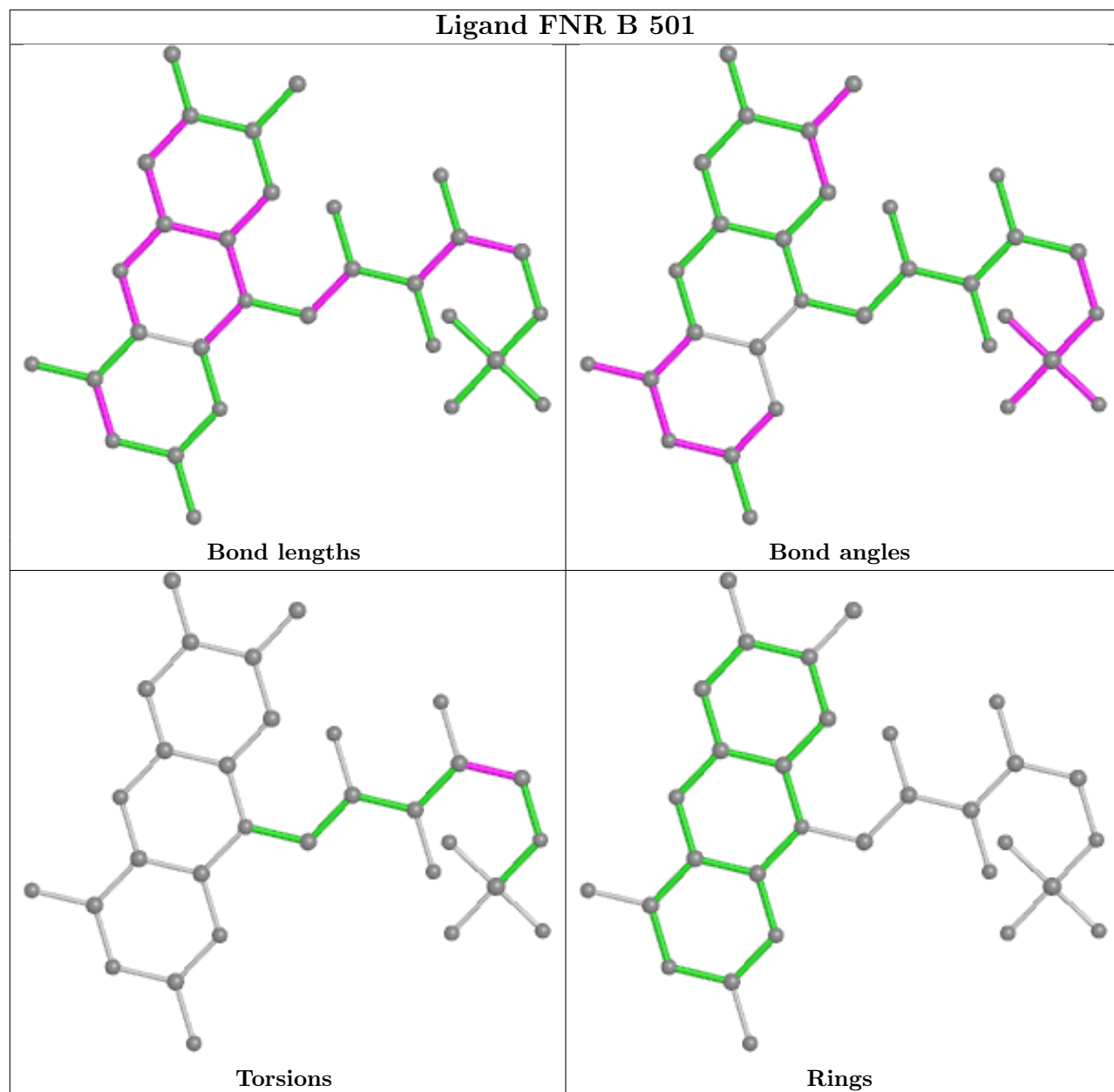


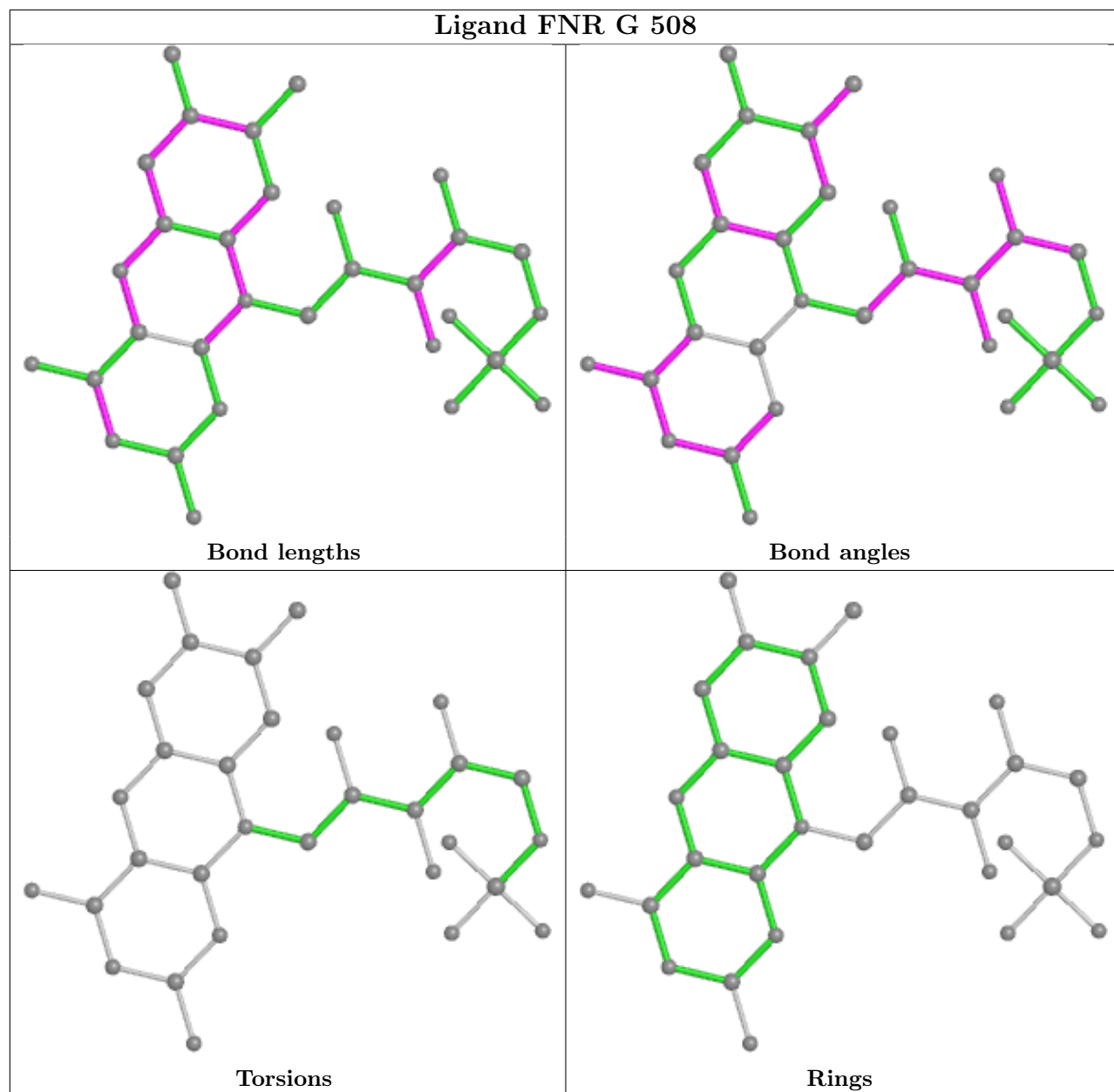


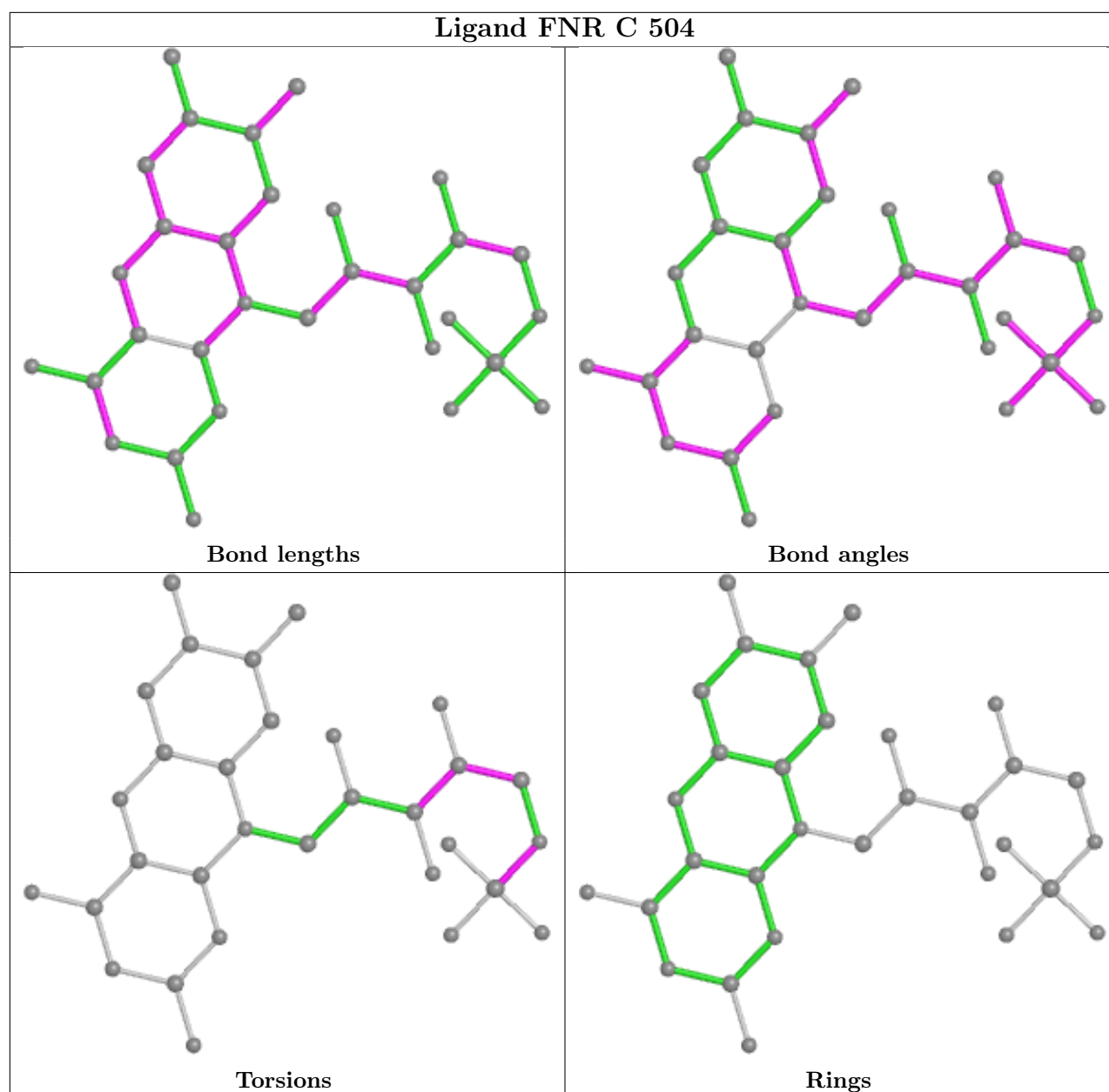












## 5.7 Other polymers [i](#)

There are no such residues in this entry.

## 5.8 Polymer linkage issues [i](#)

There are no chain breaks in this entry.



## 6 Fit of model and data [i](#)

### 6.1 Protein, DNA and RNA chains [i](#)

In the following table, the column labelled ‘#RSRZ > 2’ contains the number (and percentage) of RSRZ outliers, followed by percent RSRZ outliers for the chain as percentile scores relative to all X-ray entries and entries of similar resolution. The OWAB column contains the minimum, median, 95<sup>th</sup> percentile and maximum values of the occupancy-weighted average B-factor per residue. The column labelled ‘Q < 0.9’ lists the number of (and percentage) of residues with an average occupancy less than 0.9.

Mol	Chain	Analysed	<RSRZ>	#RSRZ>2	OWAB(Å <sup>2</sup> )	Q<0.9
1	A	219/230 (95%)	-0.42	1 (0%) 91 92	9, 16, 30, 42	0
1	B	219/230 (95%)	-0.41	2 (0%) 84 86	9, 18, 29, 43	0
1	C	219/230 (95%)	-0.33	1 (0%) 91 92	11, 20, 36, 48	0
1	D	219/230 (95%)	-0.34	2 (0%) 84 86	11, 19, 31, 39	0
1	E	219/230 (95%)	-0.47	0 100 100	9, 16, 28, 38	0
1	F	219/230 (95%)	-0.35	2 (0%) 84 86	10, 18, 30, 42	0
1	G	219/230 (95%)	-0.33	3 (1%) 75 78	12, 20, 37, 46	0
1	H	219/230 (95%)	-0.43	0 100 100	11, 19, 31, 42	0
All	All	1752/1840 (95%)	-0.38	11 (0%) 89 91	9, 18, 32, 48	0

All (11) RSRZ outliers are listed below:

Mol	Chain	Res	Type	RSRZ
1	G	9	LEU	3.7
1	B	169	PHE	2.6
1	F	197	ARG	2.6
1	G	169	PHE	2.5
1	F	169	PHE	2.3
1	C	9	LEU	2.3
1	G	196	ASP	2.2
1	D	9	LEU	2.1
1	A	9	LEU	2.0
1	D	98	GLU	2.0
1	B	227	ARG	2.0

### 6.2 Non-standard residues in protein, DNA, RNA chains [i](#)

There are no non-standard protein/DNA/RNA residues in this entry.

### 6.3 Carbohydrates [i](#)

There are no monosaccharides in this entry.

### 6.4 Ligands [i](#)

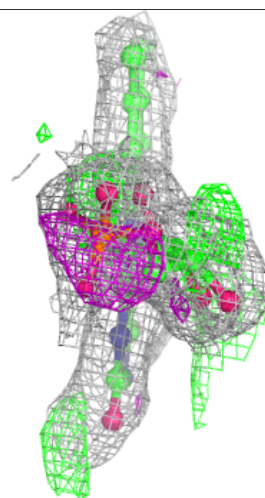
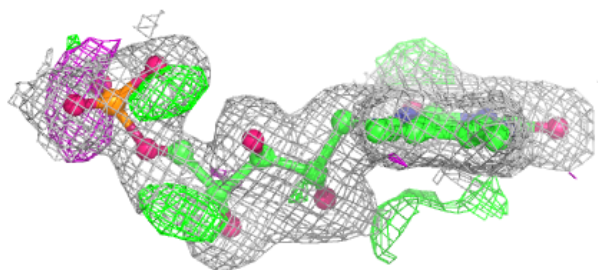
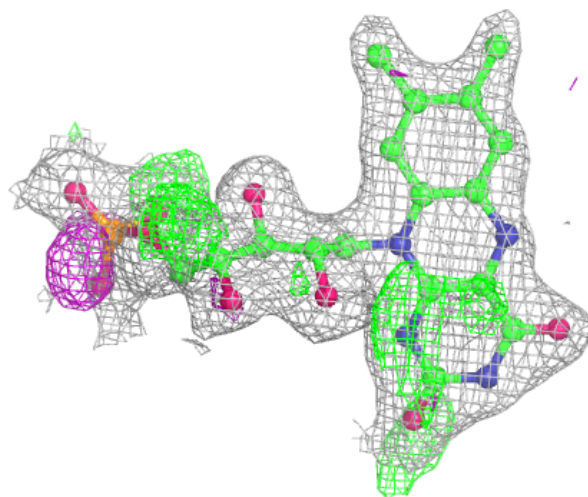
In the following table, the Atoms column lists the number of modelled atoms in the group and the number defined in the chemical component dictionary. The B-factors column lists the minimum, median, 95<sup>th</sup> percentile and maximum values of B factors of atoms in the group. The column labelled 'Q< 0.9' lists the number of atoms with occupancy less than 0.9.

Mol	Type	Chain	Res	Atoms	RSCC	RSR	B-factors(Å <sup>2</sup> )	Q<0.9
2	FNR	C	504	31/31	0.88	0.14	14,18,23,27	0
2	FNR	D	503	31/31	0.90	0.13	11,17,28,31	0
2	FNR	A	502	31/31	0.91	0.13	12,17,20,24	0
2	FNR	B	501	31/31	0.91	0.14	13,17,24,27	0
2	FNR	E	506	31/31	0.91	0.13	12,17,31,36	0
2	FNR	G	508	31/31	0.91	0.13	10,15,30,32	0
2	FNR	H	507	31/31	0.93	0.13	8,13,27,31	0
2	FNR	F	505	31/31	0.94	0.12	14,17,24,28	0

The following is a graphical depiction of the model fit to experimental electron density of all instances of the Ligand of Interest. In addition, ligands with molecular weight > 250 and outliers as shown on the geometry validation Tables will also be included. Each fit is shown from different orientation to approximate a three-dimensional view.

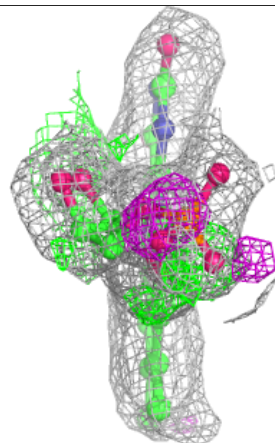
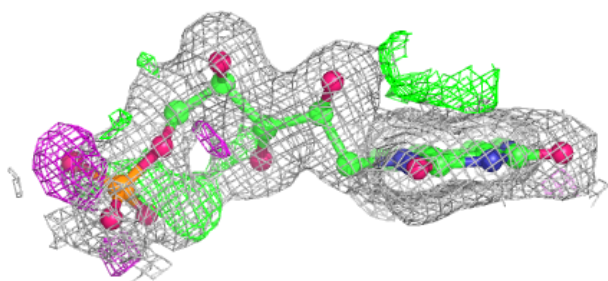
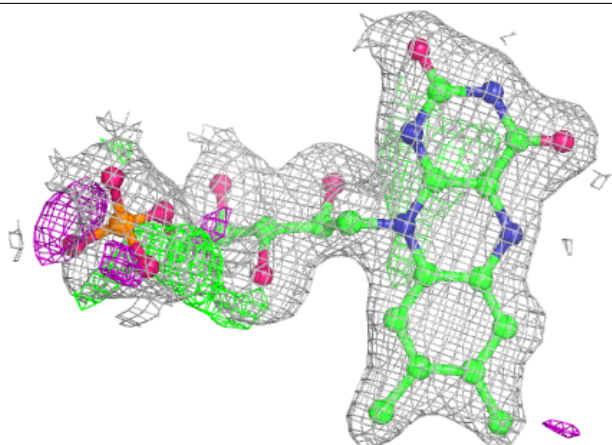
**Electron density around FNR C 504:**

$2mF_o-DF_c$  (at 0.7 rmsd) in gray  
 $mF_o-DF_c$  (at 3 rmsd) in purple (negative)  
and green (positive)



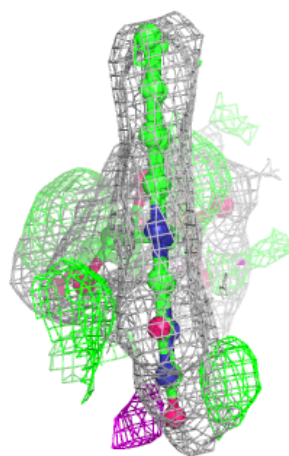
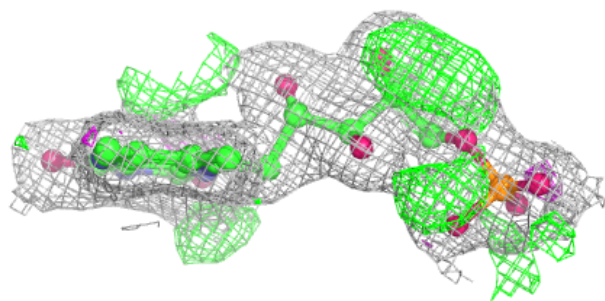
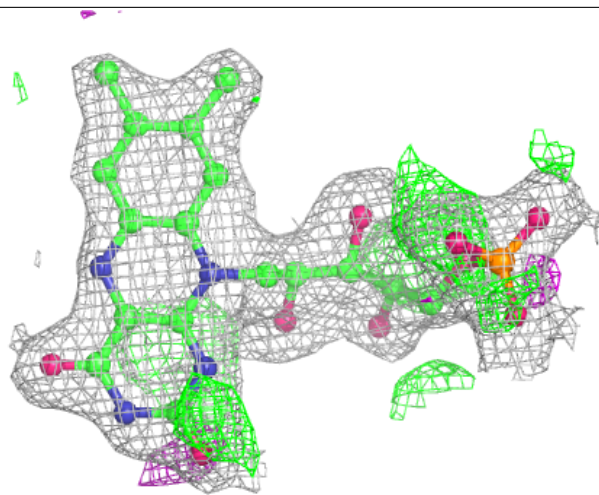
**Electron density around FNR D 503:**

$2mF_o-DF_c$  (at 0.7 rmsd) in gray  
 $mF_o-DF_c$  (at 3 rmsd) in purple (negative)  
and green (positive)



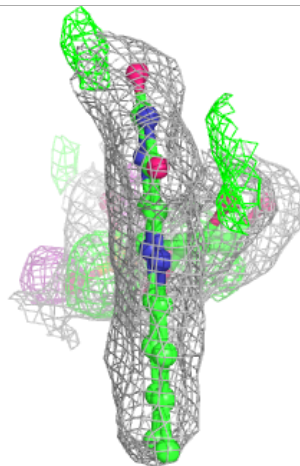
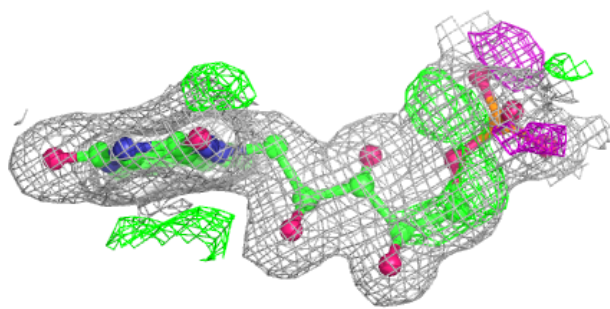
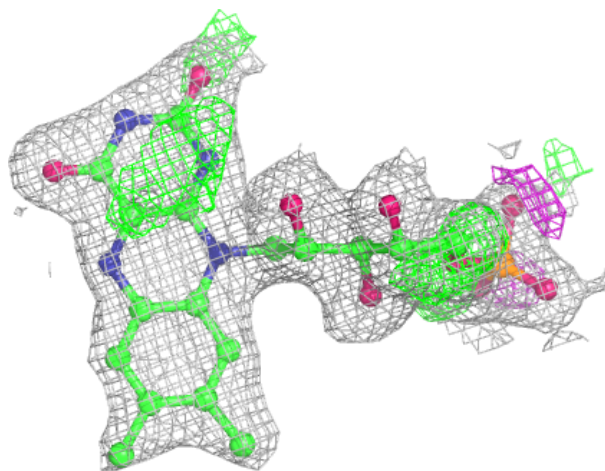
**Electron density around FNR A 502:**

$2mF_o-DF_c$  (at 0.7 rmsd) in gray  
 $mF_o-DF_c$  (at 3 rmsd) in purple (negative)  
and green (positive)



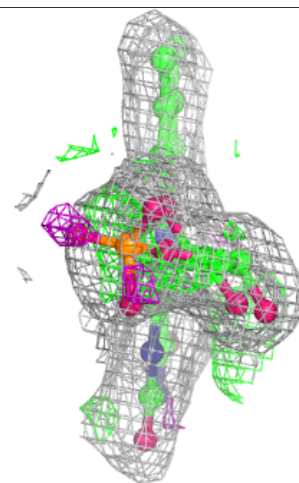
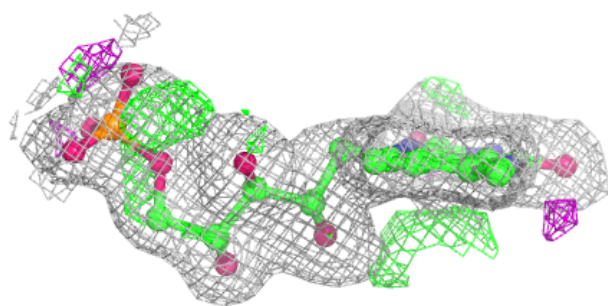
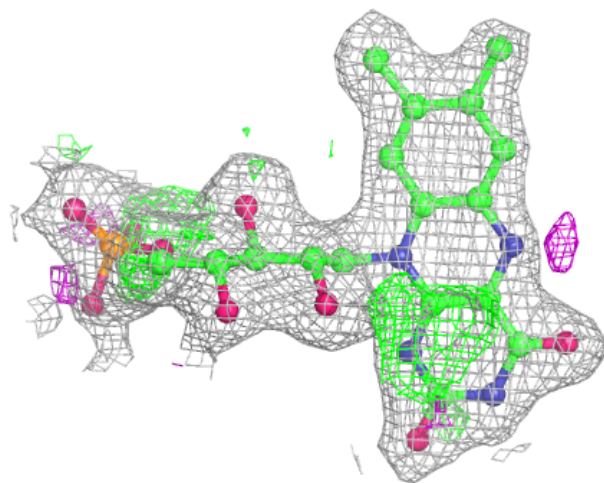
**Electron density around FNR B 501:**

$2mF_o-DF_c$  (at 0.7 rmsd) in gray  
 $mF_o-DF_c$  (at 3 rmsd) in purple (negative)  
and green (positive)



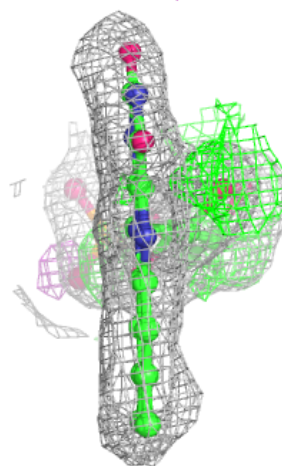
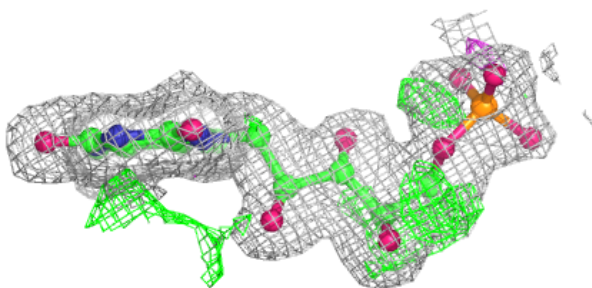
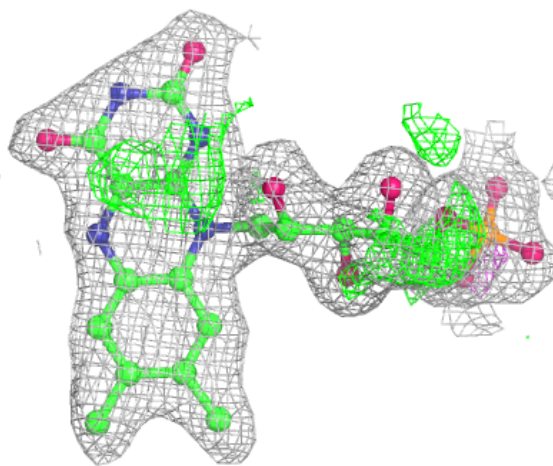
**Electron density around FNR E 506:**

$2mF_o-DF_c$  (at 0.7 rmsd) in gray  
 $mF_o-DF_c$  (at 3 rmsd) in purple (negative)  
and green (positive)



**Electron density around FNR G 508:**

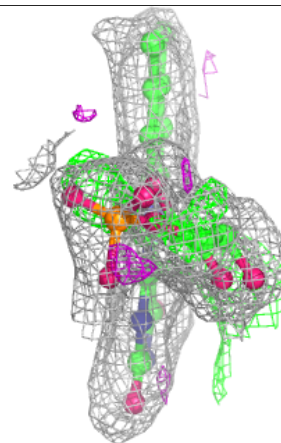
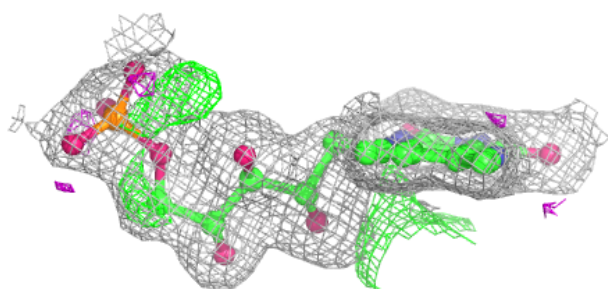
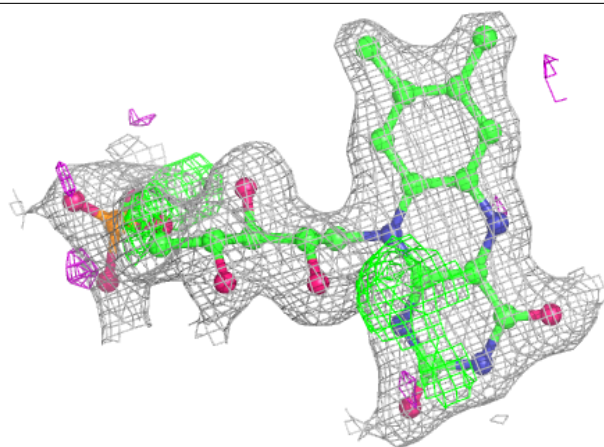
$2mF_o-DF_c$  (at 0.7 rmsd) in gray  
 $mF_o-DF_c$  (at 3 rmsd) in purple (negative)  
and green (positive)

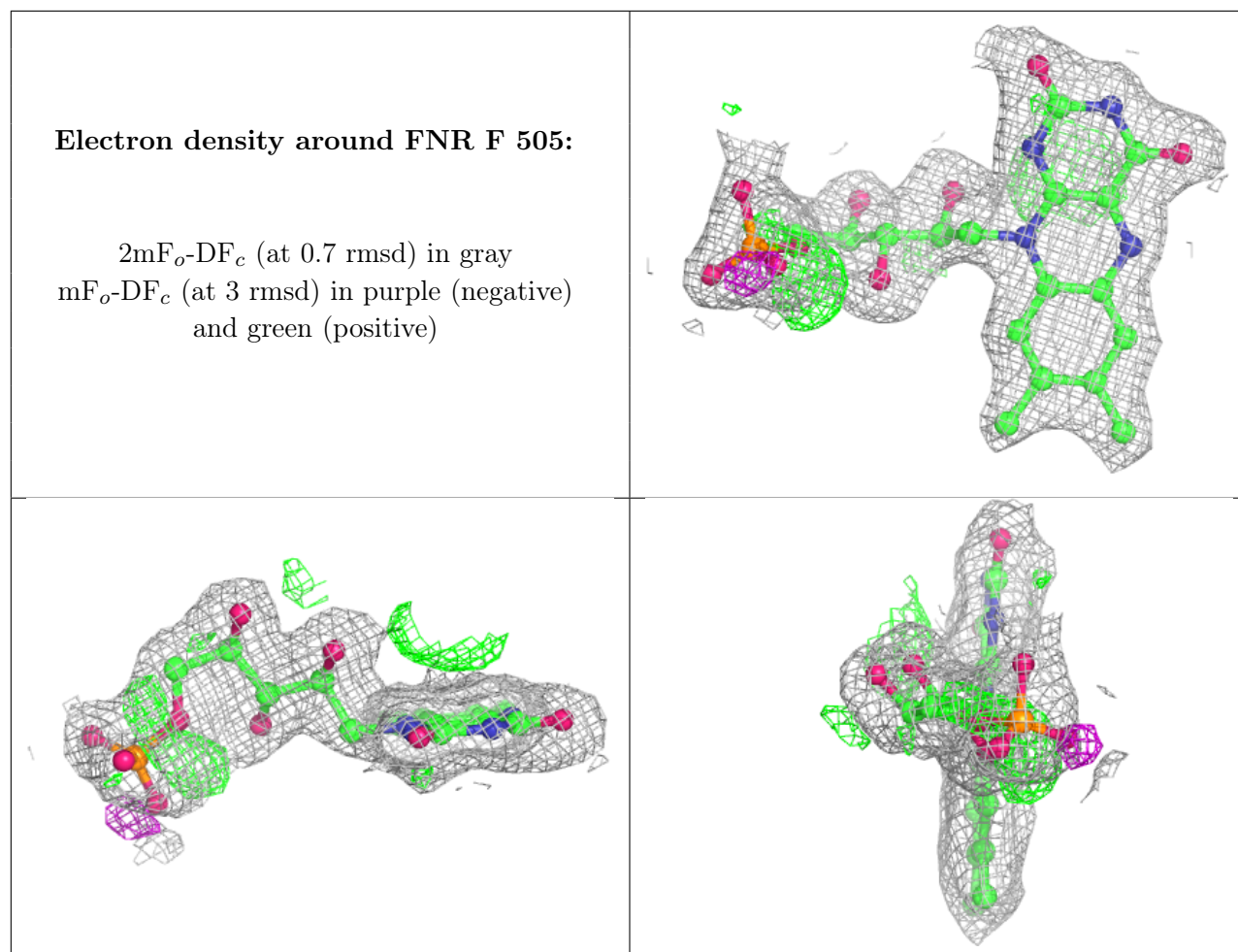




**Electron density around FNR H 507:**

$2mF_o-DF_c$  (at 0.7 rmsd) in gray  
 $mF_o-DF_c$  (at 3 rmsd) in purple (negative)  
and green (positive)





## 6.5 Other polymers [i](#)

There are no such residues in this entry.